

V&V Reference Report

L2 ASCDS Version : 7.6.9

Observation 3240 - L2 Version 001
Chandra X-Ray Center

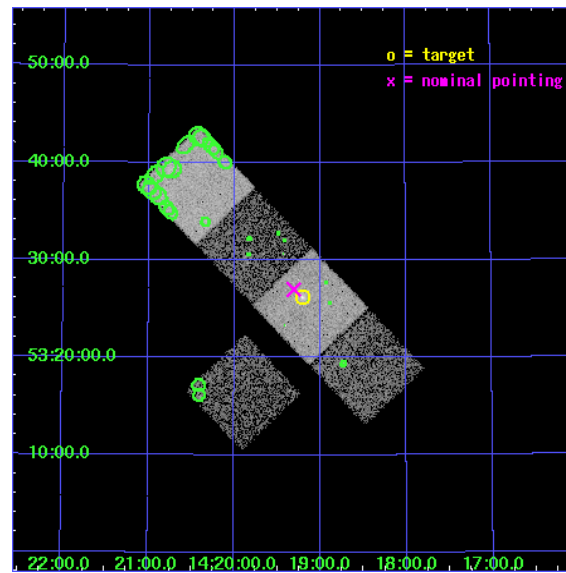
L2 Processing Date : Oct 15 2006

Contents

1	Front	2
2	OBI	3
2.1	OBI	3
2.1.1	Images	3
2.1.2	Bias	3
2.1.3	Parameters	4
2.1.4	Events	4
2.2	Compared Parameters	5
2.3	Aspect	6
2.4	Star Slots	9
2.4.1	Slot 3	9
2.4.2	Slot 4	10
2.4.3	Slot 5	11
2.4.4	Slot 6	12
2.4.5	Slot 7	13
2.5	FID Slots	14
2.5.1	Slot 0	14
2.5.2	Slot 1	15
2.5.3	Slot 2	16
3	Point Sources	17
A	Summary	18
A.1	Status	18
A.2	Comments	18

1 Front

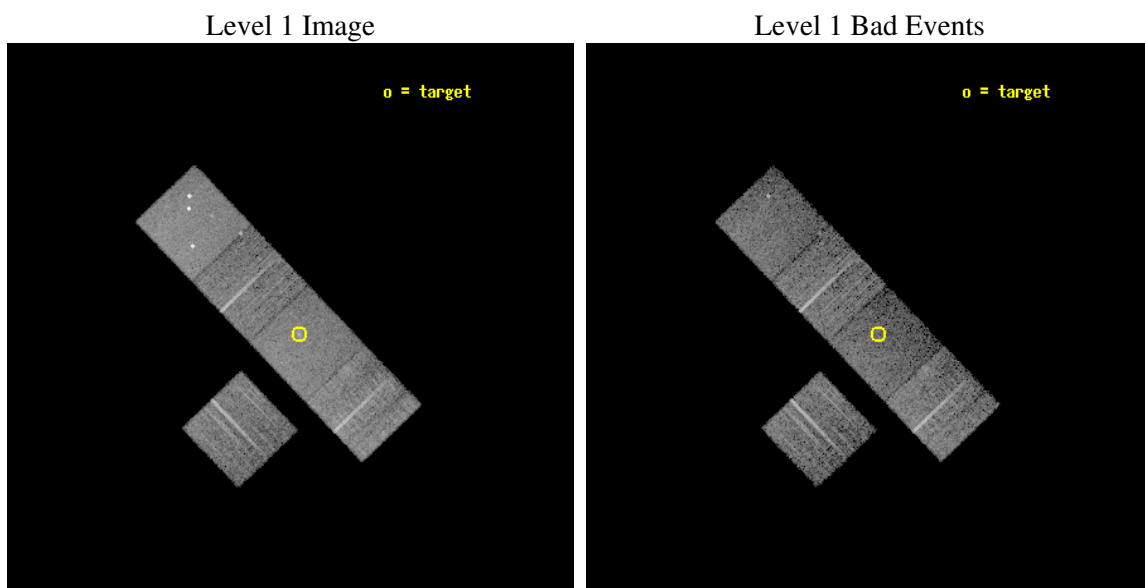
seq_num	800240
obs_id	3240
title	RICH, OPTICALLY-SELECTED GALAXY CLUSTERS AT Z~1 FROM THE RCS SURVEY
observer	Dr. Erica Ellingson
object	RCS1419+5326
dtcycle	0
cycle	P
ra_targ	214.800417
dec_targ	53.436389
ra_nom	214.82638468757
dec_nom	53.45014483117
roll_nom	46.260328853211
revision	3
ontime	10031.599980712
livetime	9900.5297418075
ontime3	10031.599980712
ontime5	10031.599980712
ontime6	10031.599980712
ontime7	10031.599980712
ontime8	10031.599980712
l2events	68977



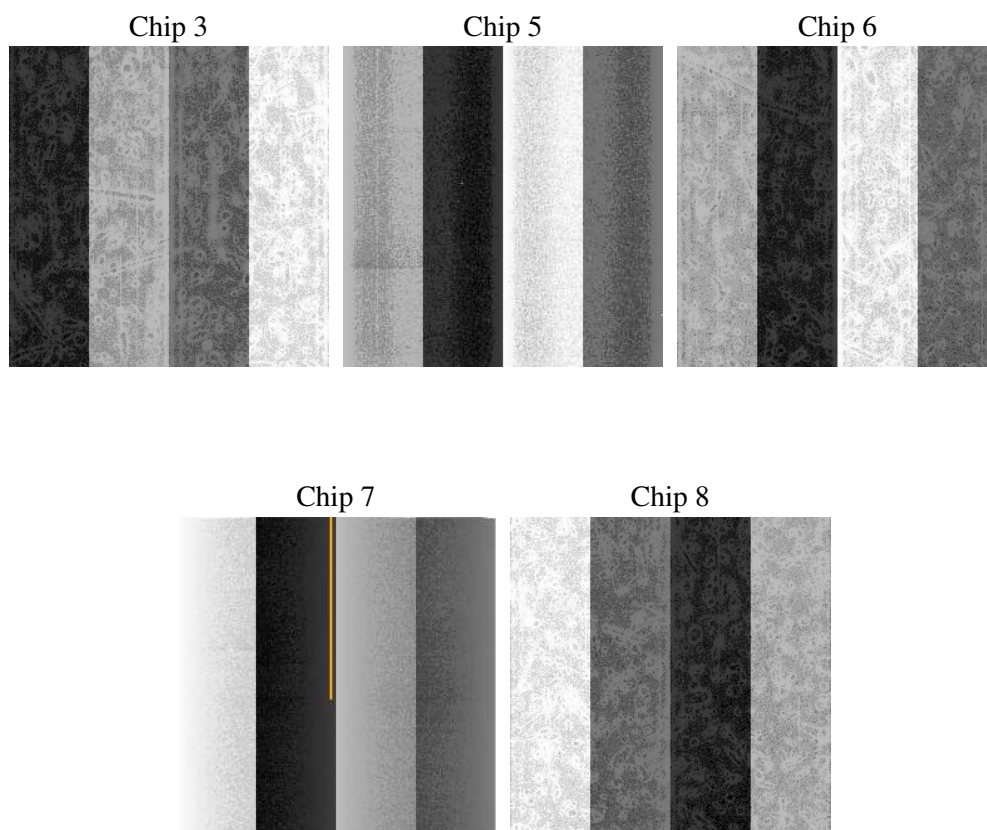
2 OBI

2.1 OBI

2.1.1 Images



2.1.2 Bias



2.1.3 Parameters

obi_num	0
ascdsver	7.6.9
caldsver	3.2.3
date	2006-10-15T05:36:31
revision	3

sched_exp_time	9928.000000
ontime	10038.645169228
ontime3	10038.645169228
ontime5	10038.645169228
ontime6	10038.645169228
ontime7	10038.645169228
ontime8	10038.645169228
l1events	293794

2.1.4 Events

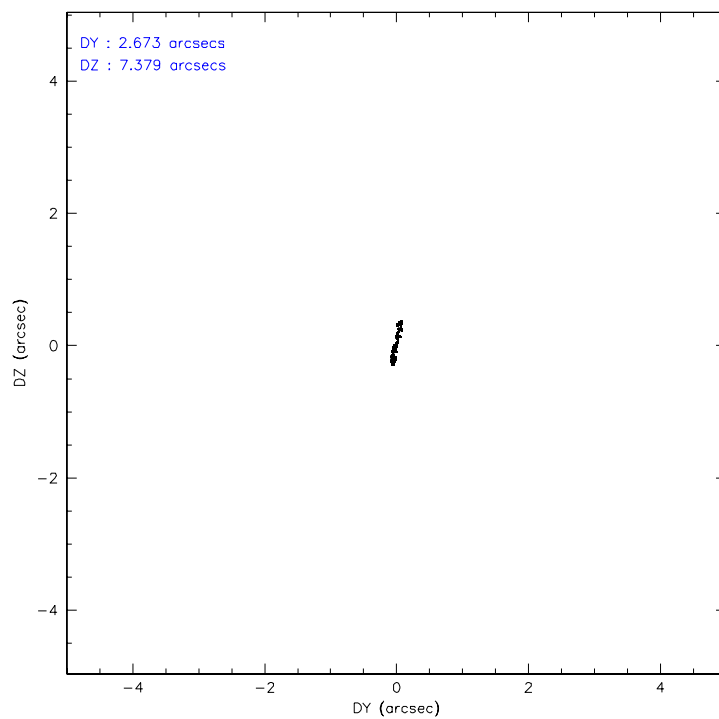
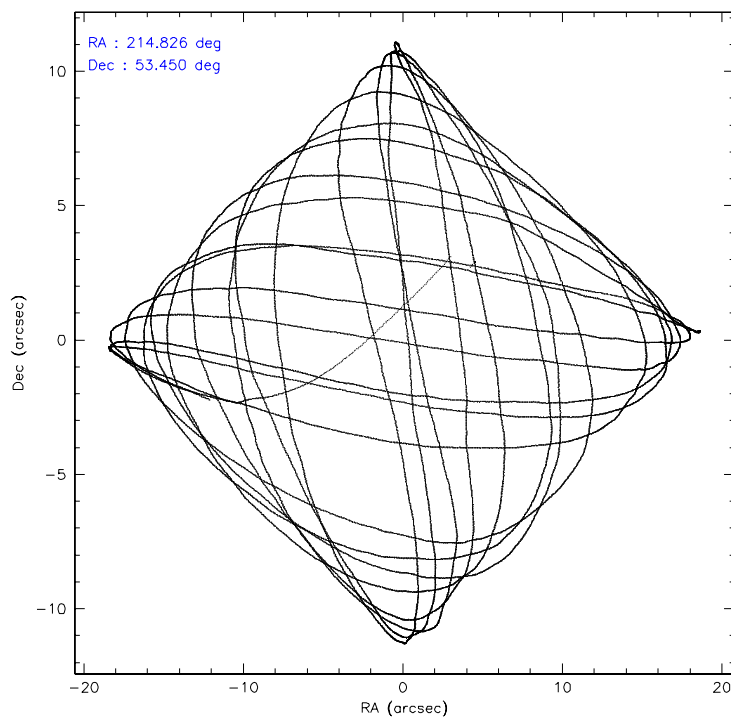
	ccd 3	ccd 5	ccd 6	ccd 7	ccd 8
level 1 events	49333	71441	51672	56452	64896
rejected events	44549	35627	46075	31813	50533
rejected %	90%	49%	89%	56%	77%

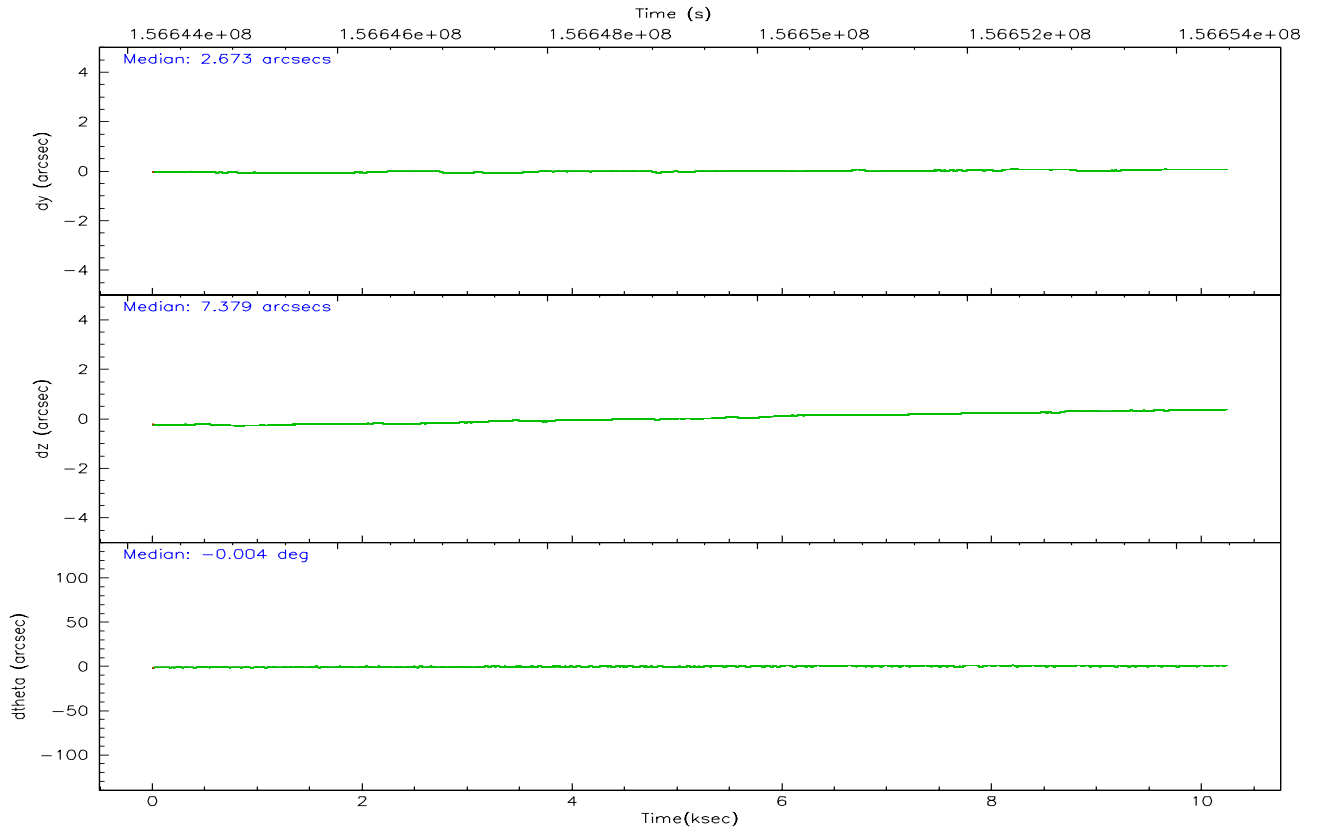
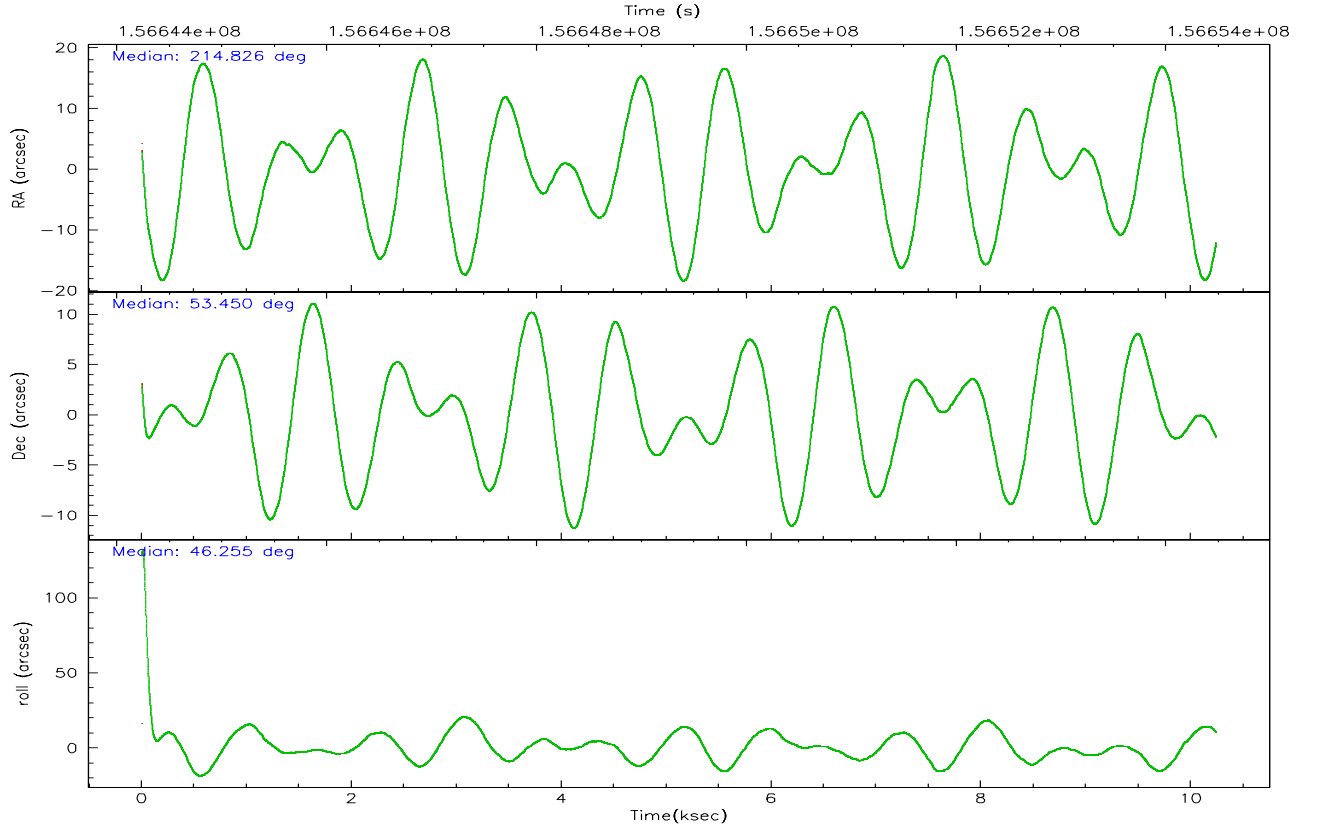
	ccd 3	ccd 5	ccd 6	ccd 7	ccd 8
grade 0 events	1711	5963	2142	1910	4474
	3%	8%	4%	3%	6%
grade 1 events	24	391	27	29	41
	0%	0%	0%	0%	0%
grade 2 events	996	10085	1130	6046	2977
	2%	14%	2%	10%	4%
grade 3 events	583	934	626	1556	1674
	1%	1%	1%	2%	2%
grade 4 events	537	840	571	1471	1635
	1%	1%	1%	2%	2%
grade 5 events	1886	3707	1943	4232	2715
	3%	5%	3%	7%	4%
grade 6 events	962	18014	1130	13680	3610
	1%	25%	2%	24%	5%
grade 7 events	42634	31507	44103	27528	47770
	86%	44%	85%	48%	73%

2.2 Compared Parameters

Parameter	Planned	Actual	Parameter	Planned	Actual
Instrument	ACIS	ACIS	Obspar format version number	6	6
Detector	ACIS-35678	ACIS-35678	Obspar file type	PREDICTED	ACTUAL
Grating	NONE	NONE	Obspar update status	NONE	UPDATED
Data mode	VFAINT	VFAINT	Number of optional ACIS chips dropped	0	0
Observation mode	POINTING	POINTING	On-chip summing requested	N	N
Pointing RA	214.816266	214.8263846875682	Subarray requested	NONE	NONE
Pointing Dec	53.423612	53.45014483117022	Alternating exposures requested	N	N
Pointing Roll	46.111640	46.26032885321092	Primary exposure time	0.000000	3.1
SIM focus pos (mm)	-0.684267	-0.6828225247311905			
SIM defocus (mm)	0	0.001444936568705701			
SIM translation stage pos (mm)	-190.132523	-190.1400660498719			
SIM translation stage offset (mm)	0	0.00754346686406393			
Observation start time	156644558.184000	156643489.02037			
Observation start date	2002-12-19T00:21:34	2002-12-19T00:04:49			
Observation end time	156654486.184000	156655122.77086			
Observation end date	2002-12-19T03:07:02	2002-12-19T03:18:42			
Read mode	TIMED	TIMED			

2.3 Aspect



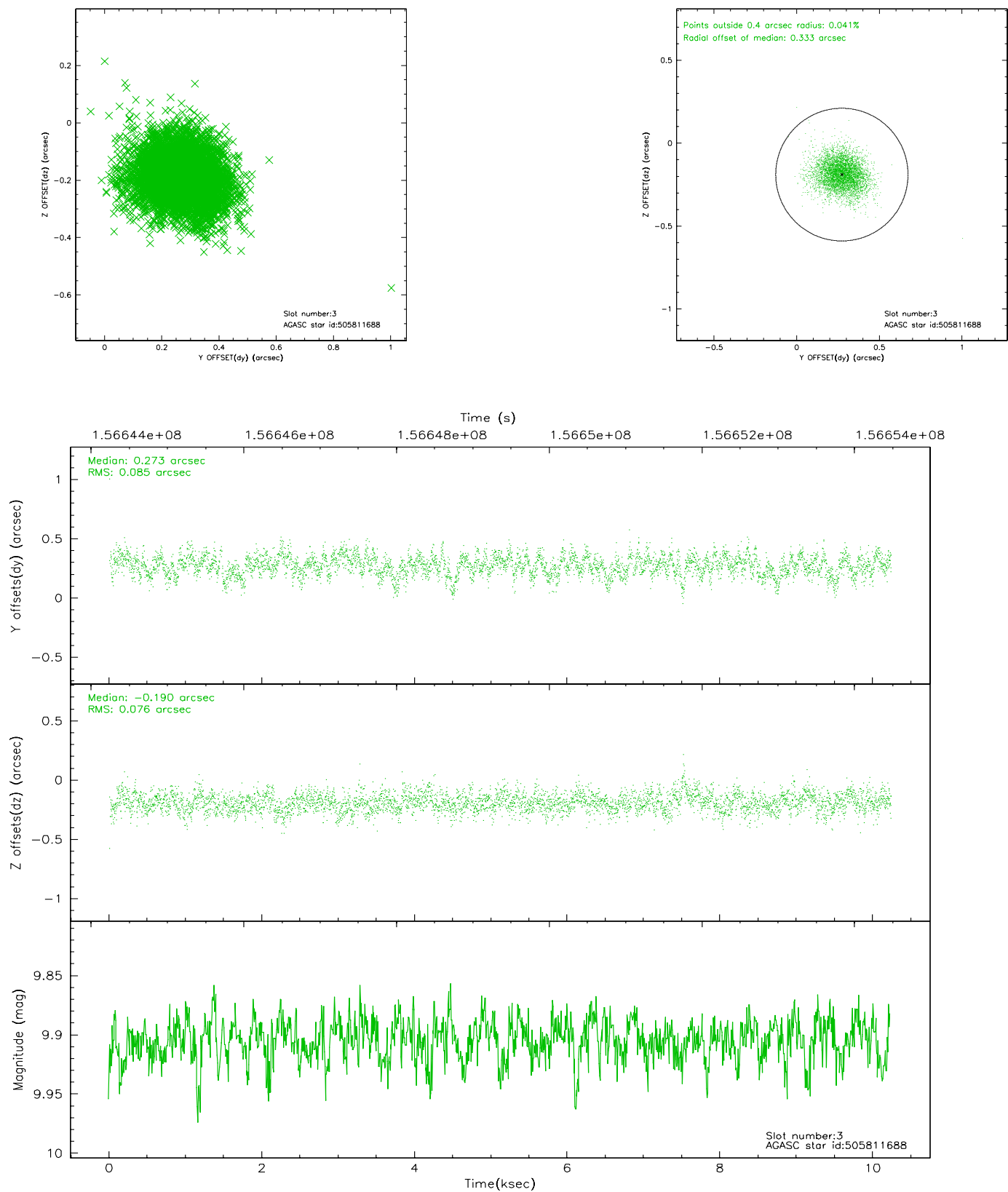


Slot Statistics

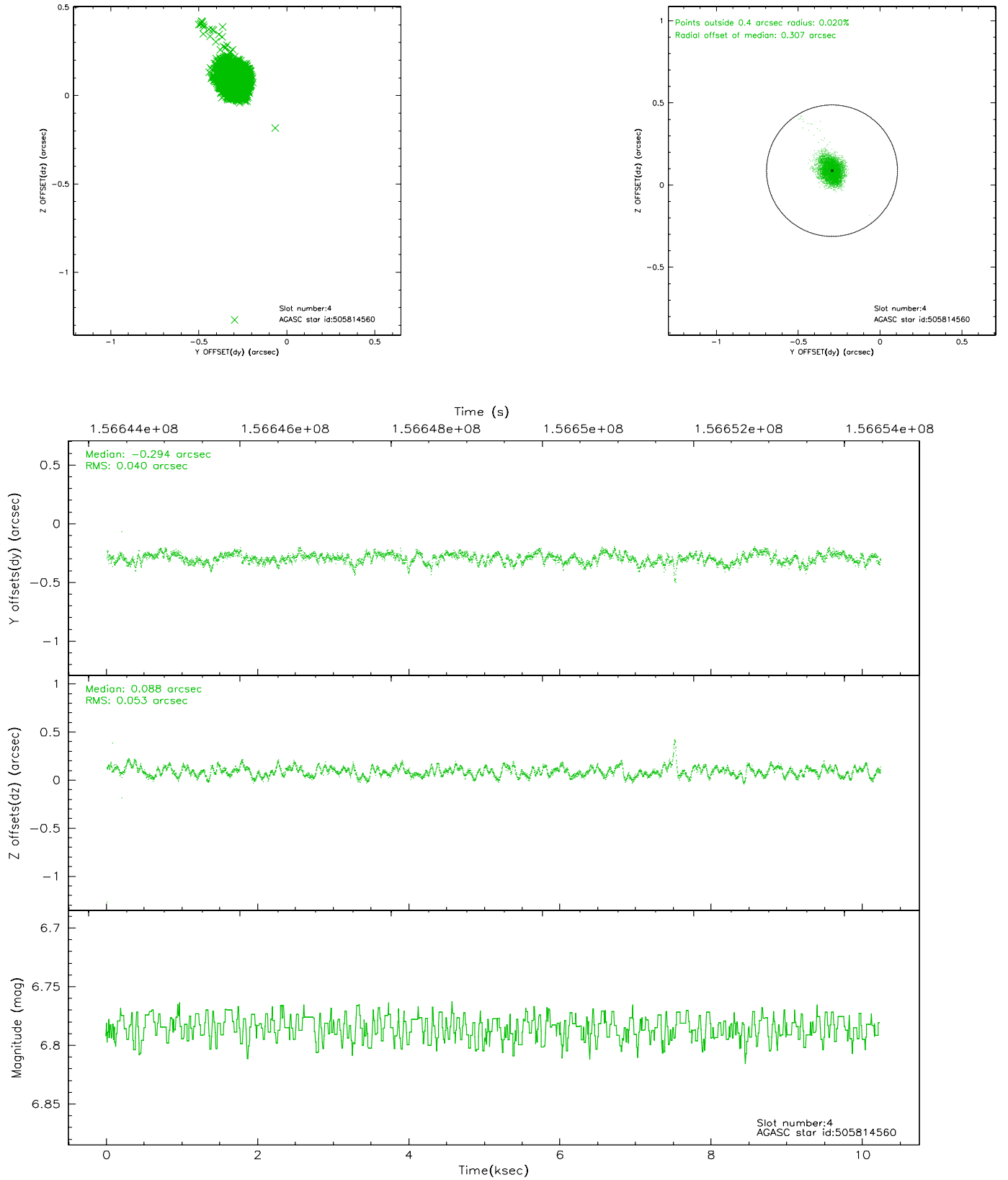
slot	status	id	mag	n_pts	med_dy	med_dz	dr1	dr2	ra	dec	mean_y	mean_z
0	FID	ACIS-S-2	7.12	2497	-0.007	0.017	0.007	0.012	0.000000	0.000000	-755.32	-1728.56
1	FID	ACIS-S-4	7.20	2498	-0.051	-0.001	0.005	0.008	0.000000	0.000000	2157.69	179.36
2	FID	ACIS-S-5	7.24	2498	0.027	-0.007	0.007	0.013	0.000000	0.000000	-1807.45	173.62
3	GUIDE	505811688	9.90	4914	0.273	-0.190	0.119	0.196	214.148747	53.627794	-452.67	1540.65
4	GUIDE	505814560	6.78	4996	-0.294	0.088	0.066	0.103	215.720521	53.810357	2344.93	-411.39
5	GUIDE	505812088	8.16	4996	0.137	-0.071	0.112	0.171	214.186617	53.263562	-1349.72	581.17
6	GUIDE	505815008	10.43	4878	-0.052	0.106	0.228	0.374	215.914204	53.713651	2387.40	-949.52
7	GUIDE	505817616	10.12	4990	-0.053	0.062	0.138	0.224	216.040487	53.402541	1784.18	-1930.74

2.4 Star Slots

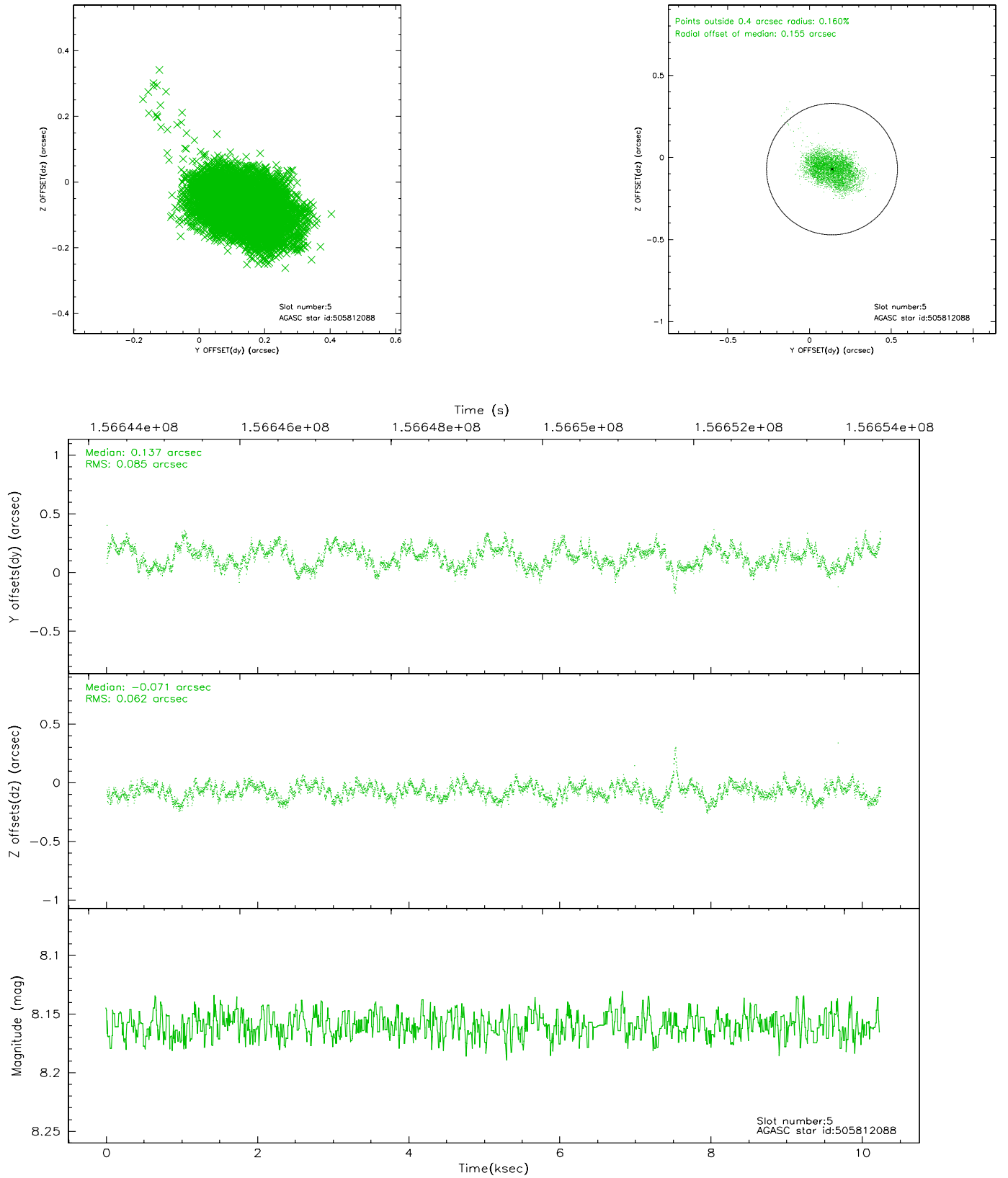
2.4.1 Slot 3



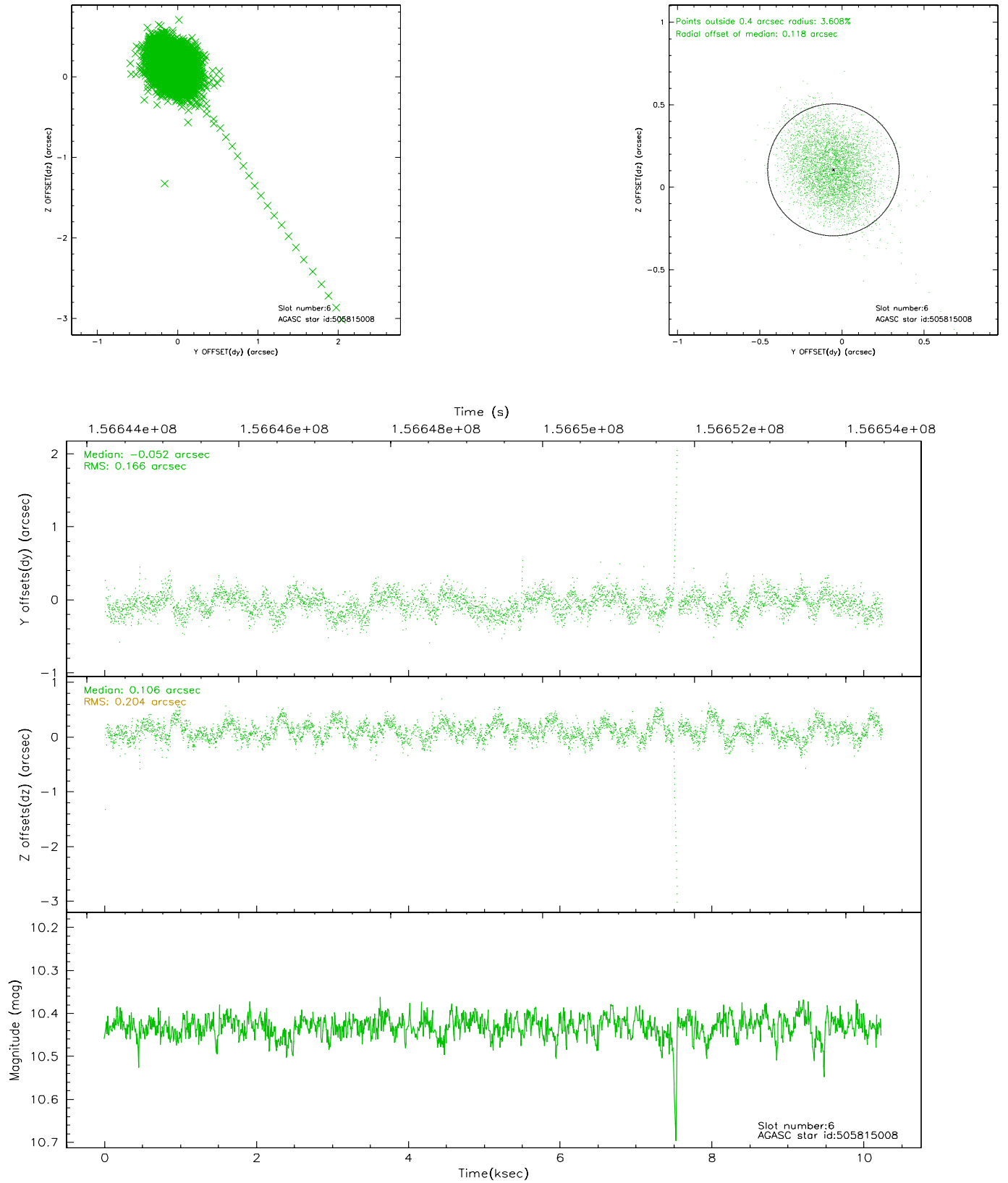
2.4.2 Slot 4



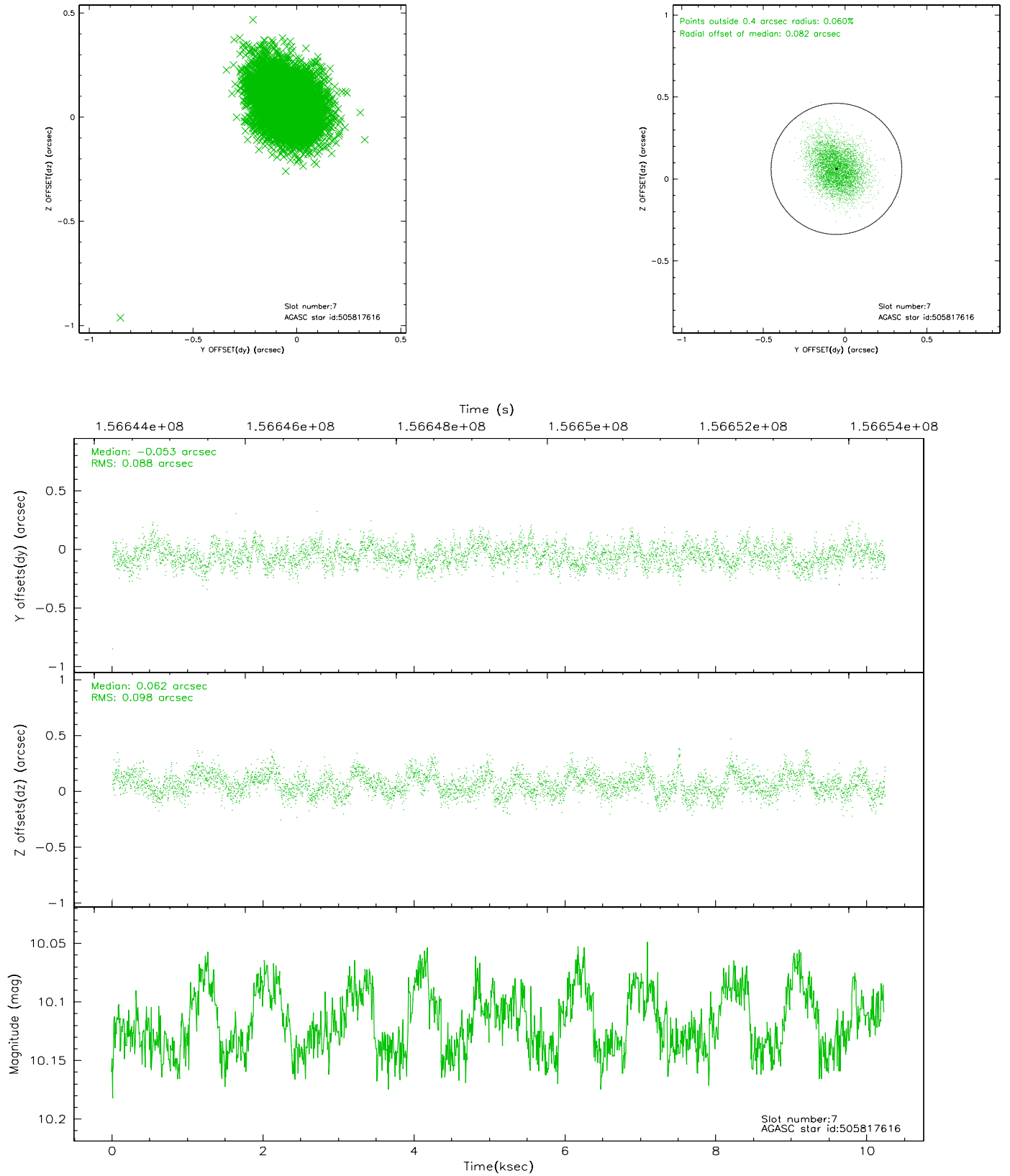
2.4.3 Slot 5



2.4.4 Slot 6

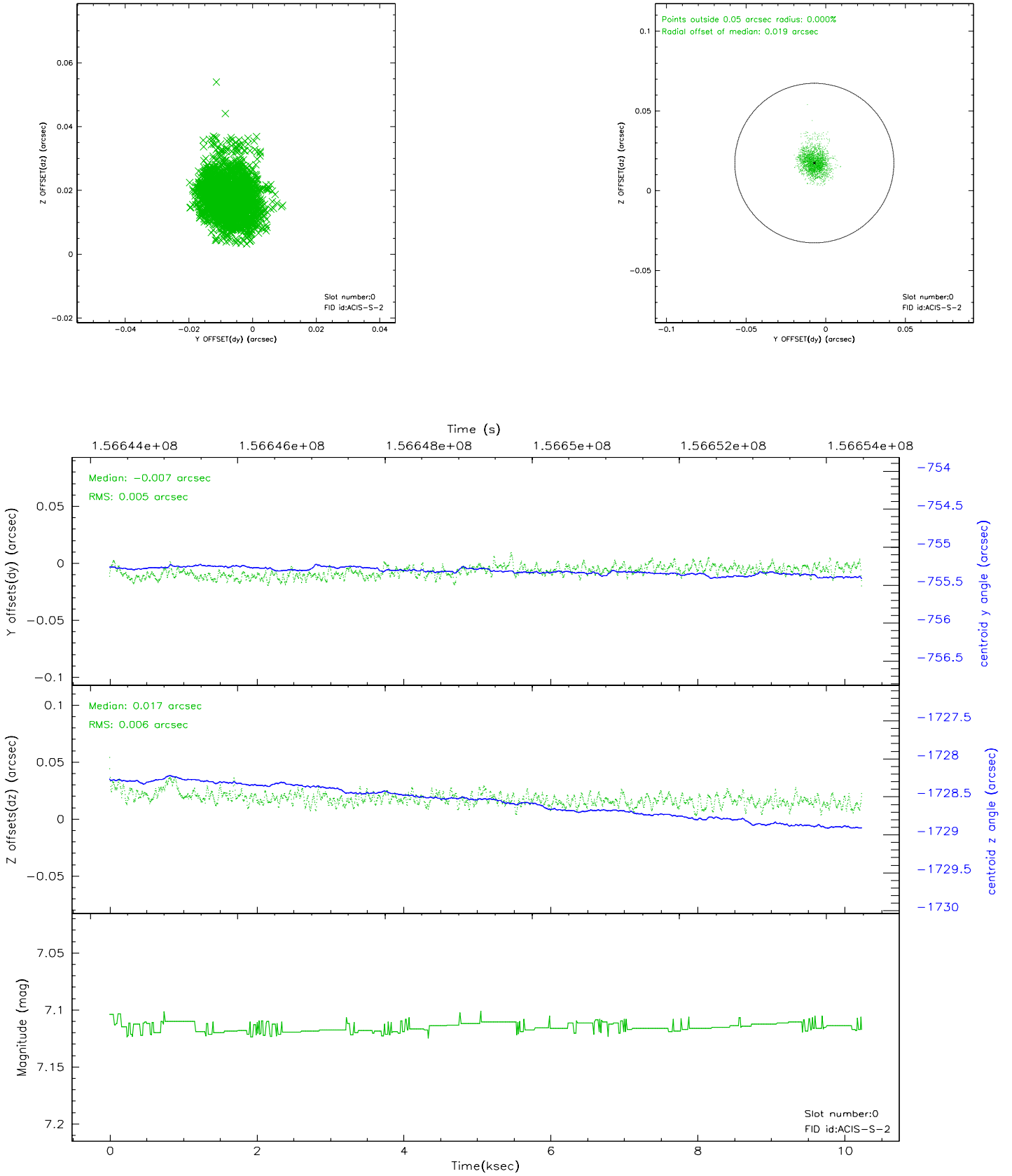


2.4.5 Slot 7

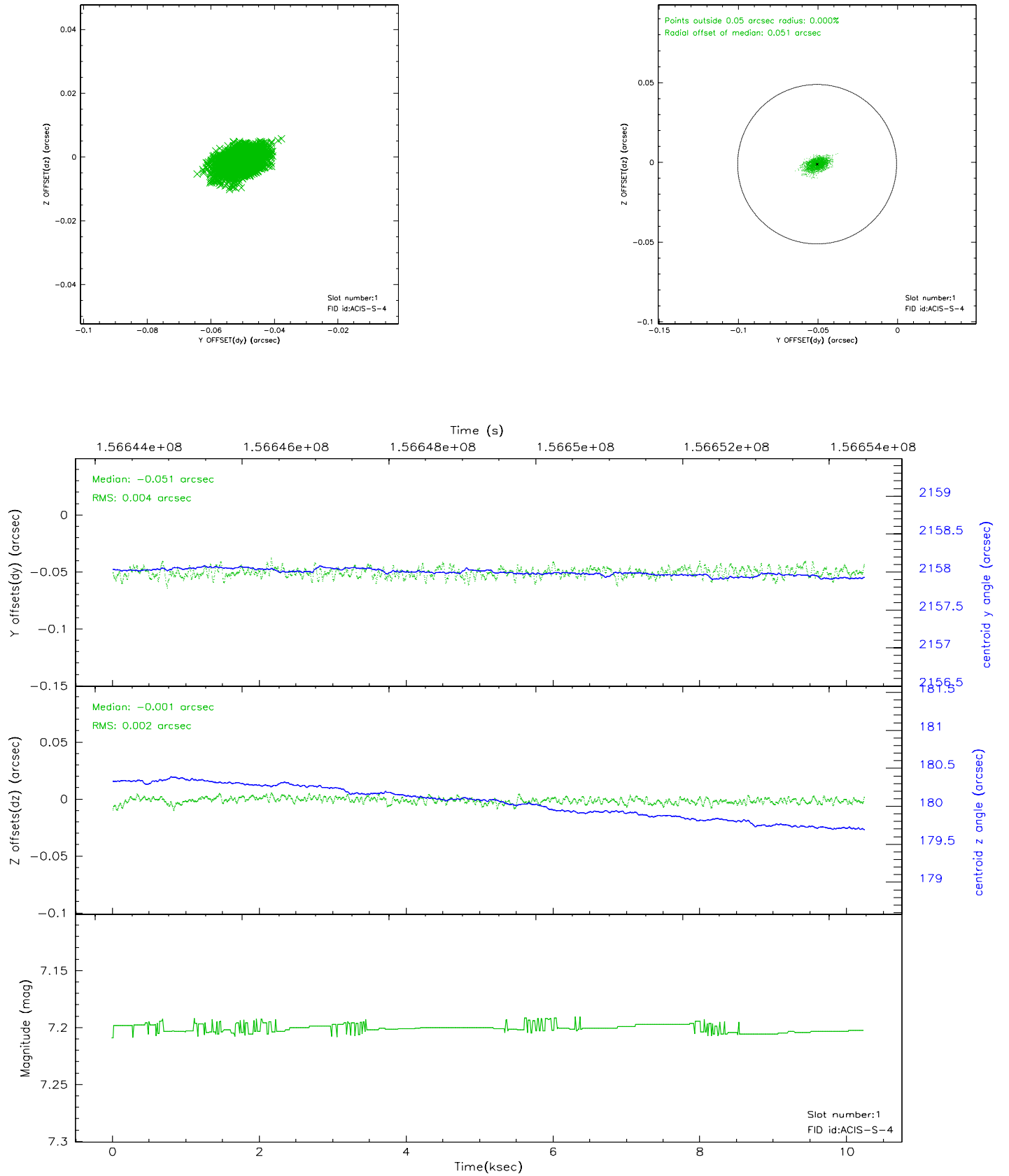


2.5 FID Slots

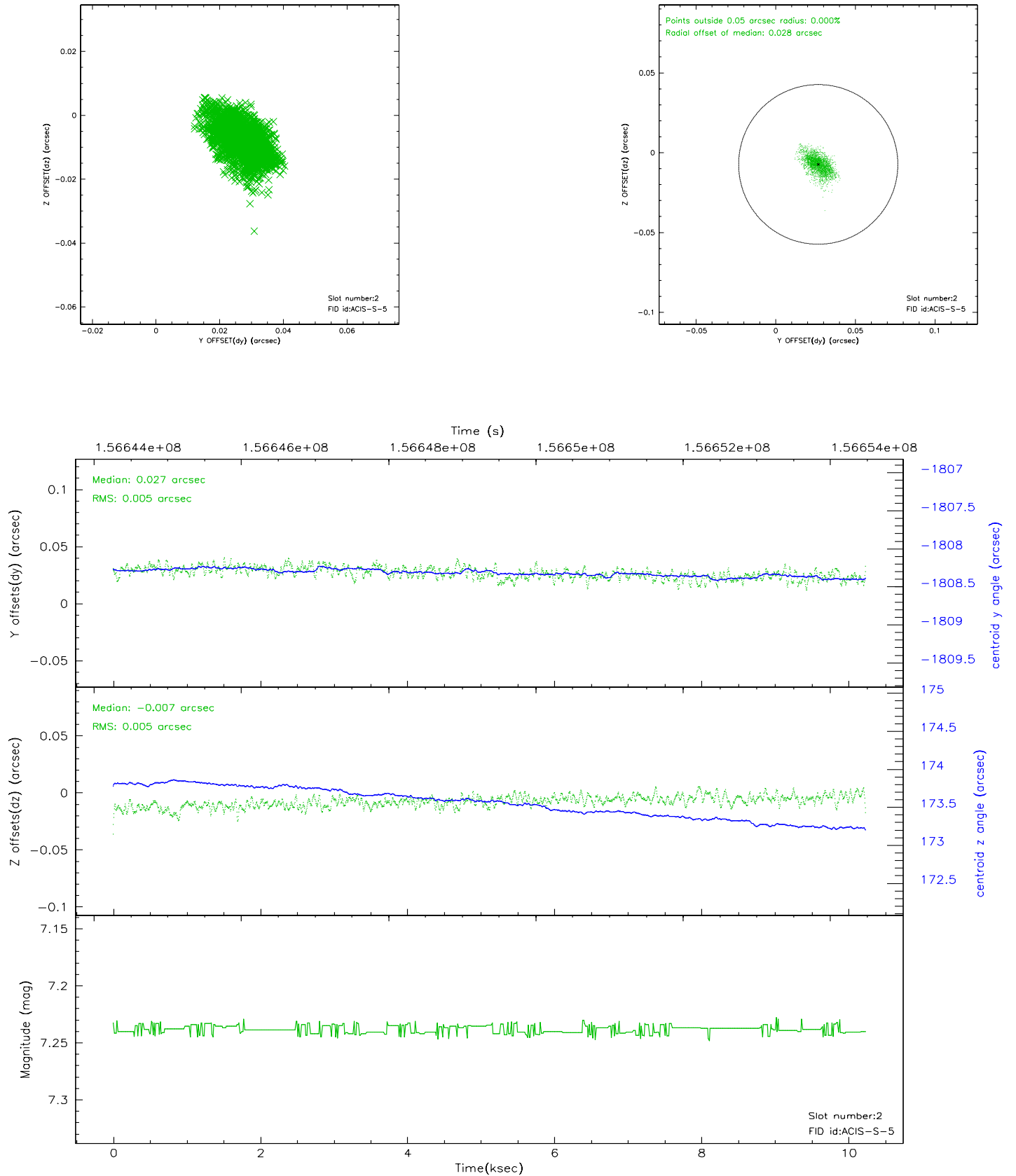
2.5.1 Slot 0



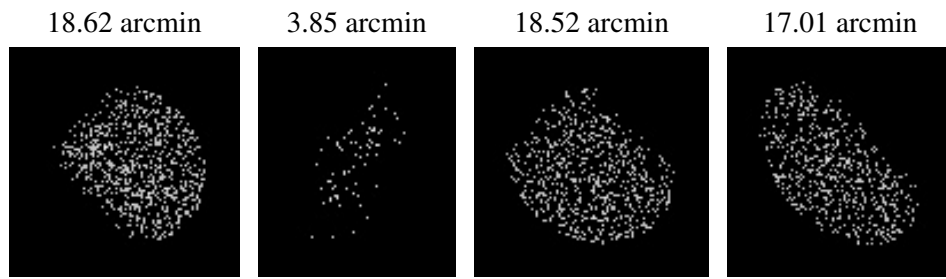
2.5.2 Slot 1



2.5.3 Slot 2



3 Point Sources



A Summary

A.1 Status

V&V Scientist	Beth Sundheim
V&V Date (YYYY-MM-DD)	2006.10.16
V&V Edition	1
V&V Disposition and Status	OK
V&V Charge Time	10.034

A.2 Comments