

V&V Reference Report

L2 ASCDS Version : 7.6.9

Observation 3183 - L2 Version 001
Chandra X-Ray Center

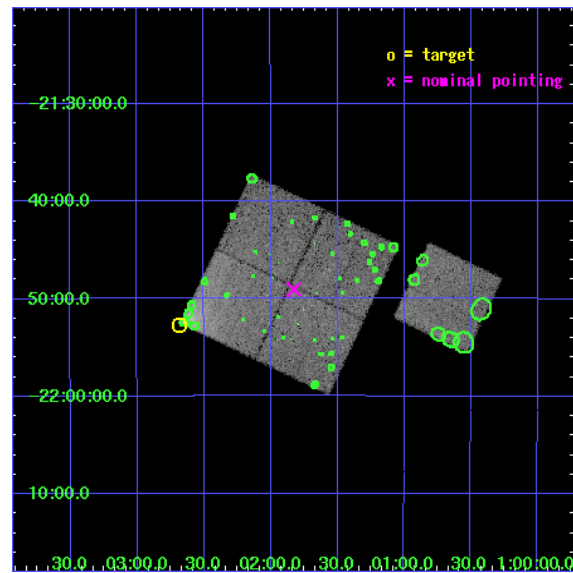
L2 Processing Date : Sep 20 2006

Contents

1	Front	2
2	OBI	3
2.1	OBI	3
2.1.1	Images	3
2.1.2	Bias	3
2.1.3	Parameters	4
2.1.4	Events	4
2.2	Compared Parameters	5
2.3	Aspect	6
2.4	Star Slots	9
2.4.1	Slot 3	9
2.4.2	Slot 4	10
2.4.3	Slot 5	11
2.4.4	Slot 6	12
2.4.5	Slot 7	13
2.5	FID Slots	14
2.5.1	Slot 0	14
2.5.2	Slot 1	15
2.5.3	Slot 2	16
3	Point Sources	17
A	Summary	18
A.1	Status	18
A.2	Comments	18

1 Front

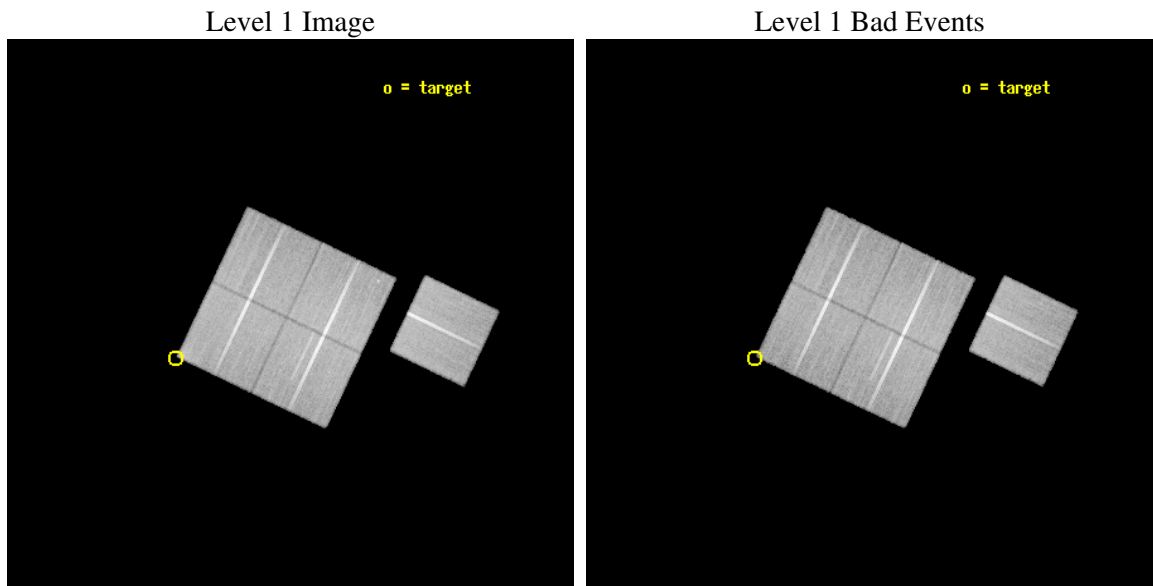
seq_num	800183
obs_id	3183
title	DEEP X-RAY IMAGE OF A133
observer	Dr. Stephen Murray
object	A133 OFFSET
dtcycle	0
cycle	P
ra_targ	15.67
dec_targ	-21.878
ra_nom	15.456620804359
dec_nom	-21.817555326166
roll_nom	115.47909714972
revision	3
ontime	45111.117933005
livetime	44521.707966889
ontime0	45111.117982775
ontime1	45111.117962897
ontime2	45111.117992789
ontime3	45111.117933005
ontime6	45114.258953035
l2events	116585



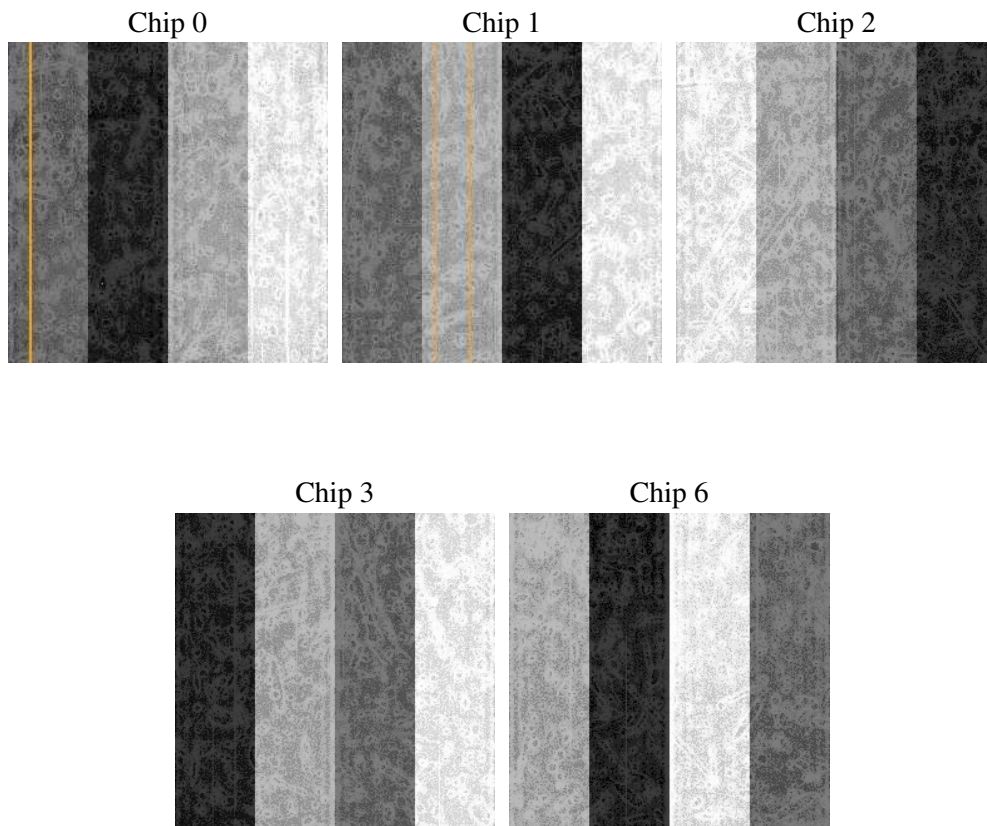
2 OBI

2.1 OBI

2.1.1 Images



2.1.2 Bias



2.1.3 Parameters

obi_num	0
ascdsver	7.6.9
caldbver	3.2.3
date	2006-09-21T01:46:42
revision	3

sched_exp_time	45000.000000
ontime	45117.325218886
ontime0	45117.325268656
ontime1	45117.325248778
ontime2	45117.32527867
ontime3	45117.325218886
ontime6	45120.466238916
l1events	1262818

2.1.4 Events

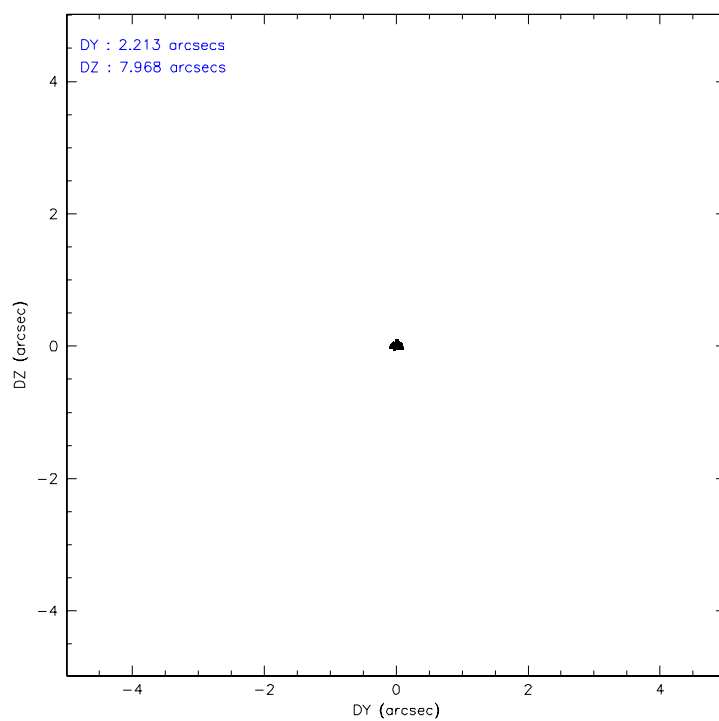
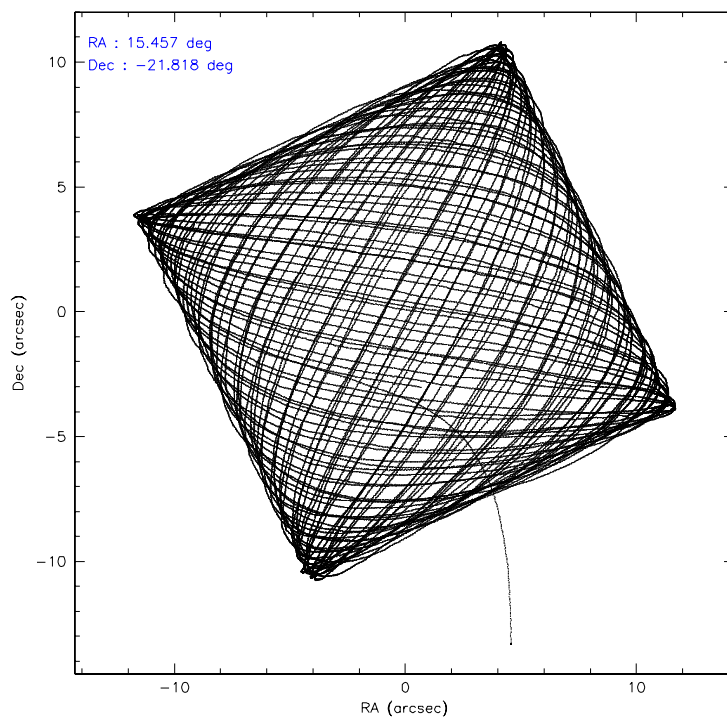
	ccd 0	ccd 1	ccd 2	ccd 3	ccd 6
level 1 events	238257	253456	267753	252924	250428
rejected events	213730	212708	243052	228798	225774
rejected %	89%	83%	90%	90%	90%

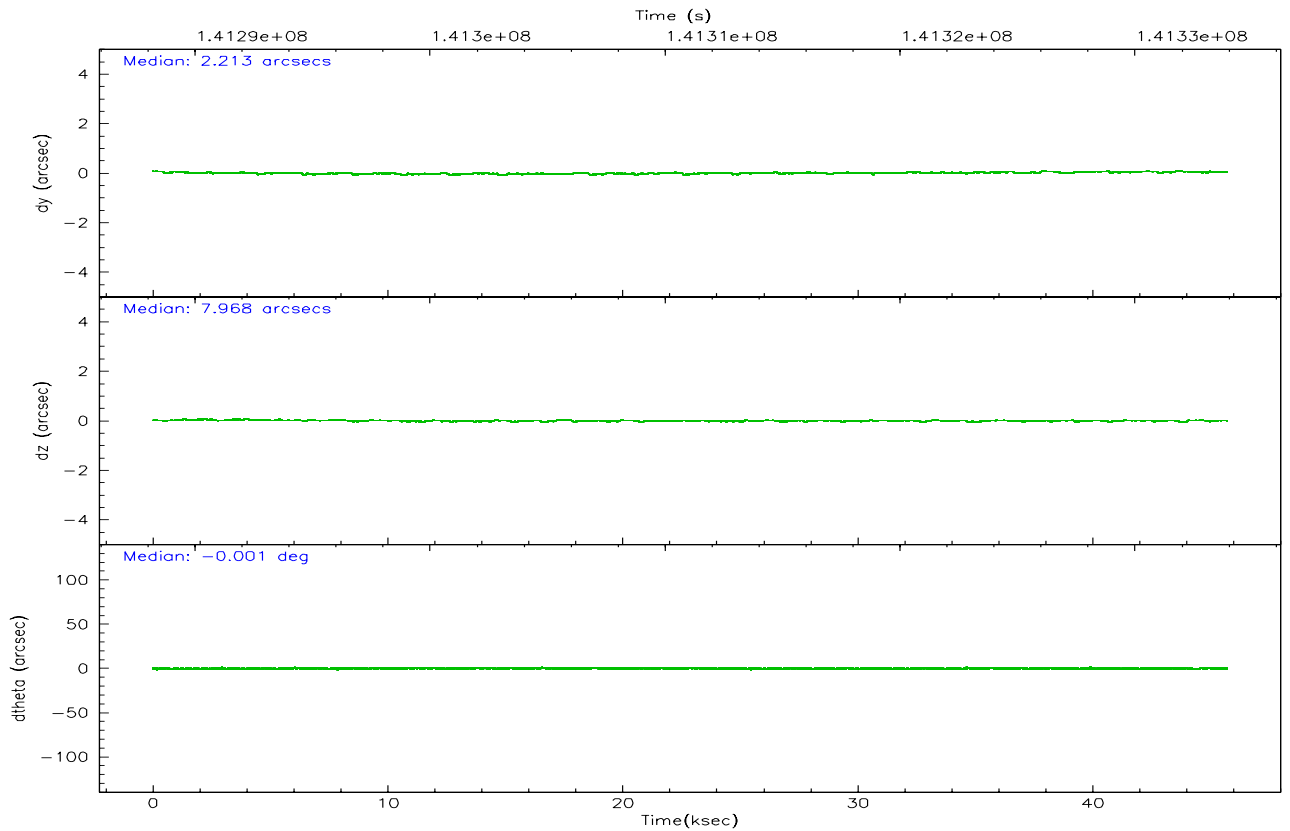
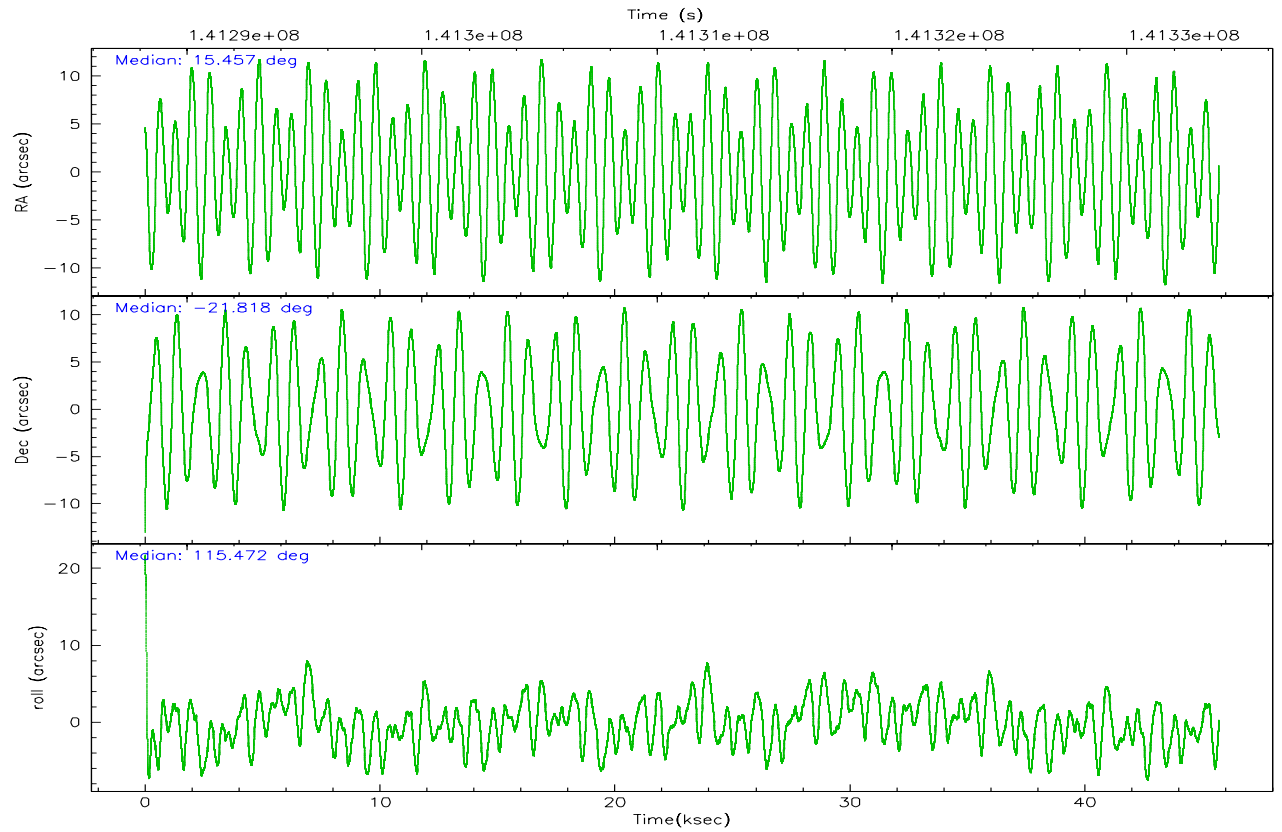
	ccd 0	ccd 1	ccd 2	ccd 3	ccd 6
grade 0 events	8592	20983	9157	9091	8506
	3%	8%	3%	3%	3%
grade 1 events	90	164	92	92	93
	0%	0%	0%	0%	0%
grade 2 events	5670	6945	5562	5009	5282
	2%	2%	2%	1%	2%
grade 3 events	3007	3592	2624	2702	2844
	1%	1%	0%	1%	1%
grade 4 events	2619	3579	2721	2638	2796
	1%	1%	1%	1%	1%
grade 5 events	7930	8854	7583	8904	9167
	3%	3%	2%	3%	3%
grade 6 events	4643	5652	4643	4690	5227
	1%	2%	1%	1%	2%
grade 7 events	205706	203687	235371	219798	216513
	86%	80%	87%	86%	86%

2.2 Compared Parameters

Parameter	Planned	Actual	Parameter	Planned	Actual
Instrument	ACIS	ACIS	Obspar format version number	6	6
Detector	ACIS-01236	ACIS-01236	Obspar file type	PREDICTED	ACTUAL
Grating	NONE	NONE	Obspar update status	NONE	UPDATED
Data mode	VFAINT	VFAINT	Number of optional ACIS chips dropped	0	0
Observation mode	POINTING	POINTING	On-chip summing requested	N	N
Pointing RA	15.481004	15.45662080435881	Subarray requested	NONE	NONE
Pointing Dec	-21.833022	-21.81755532616621	Alternating exposures requested	N	N
Pointing Roll	115.279468	115.4790971497154	Primary exposure time	0.000000	3.1
SIM focus pos (mm)	-0.782348	-0.7809083437167272			
SIM defocus (mm)	0	0.001439871863259334			
SIM translation stage pos (mm)	-233.592463	-233.5874344608287			
SIM translation stage offset (mm)	0	-0.005018542100998502			
Observation start time	141288926.184000	141287699.96015			
Observation start date	2002-06-24T06:54:22	2002-06-24T06:34:59			
Observation end time	141333926.184000	141334425.09956			
Observation end date	2002-06-24T19:24:22	2002-06-24T19:33:45			
Read mode	TIMED	TIMED			

2.3 Aspect



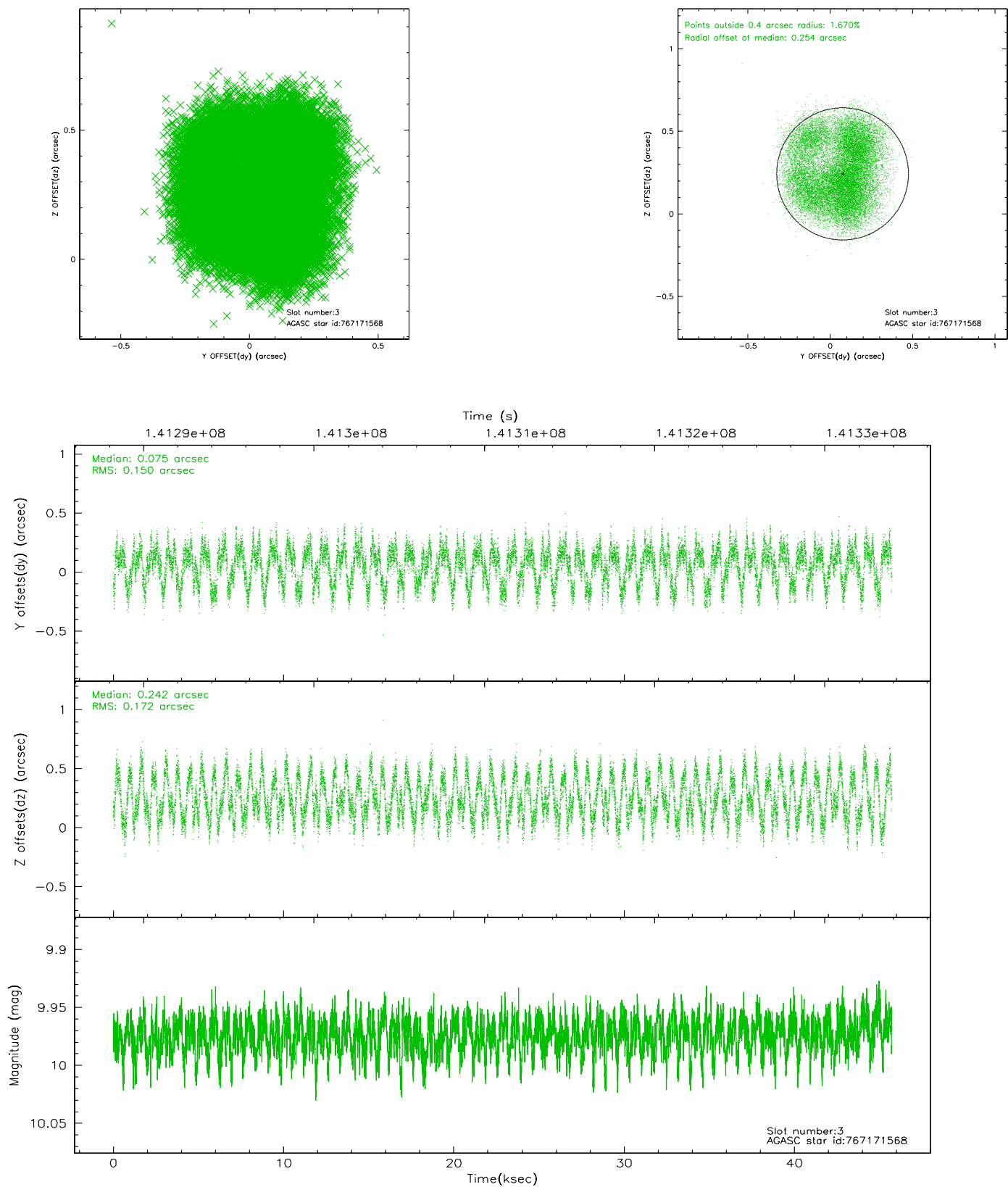


Slot Statistics

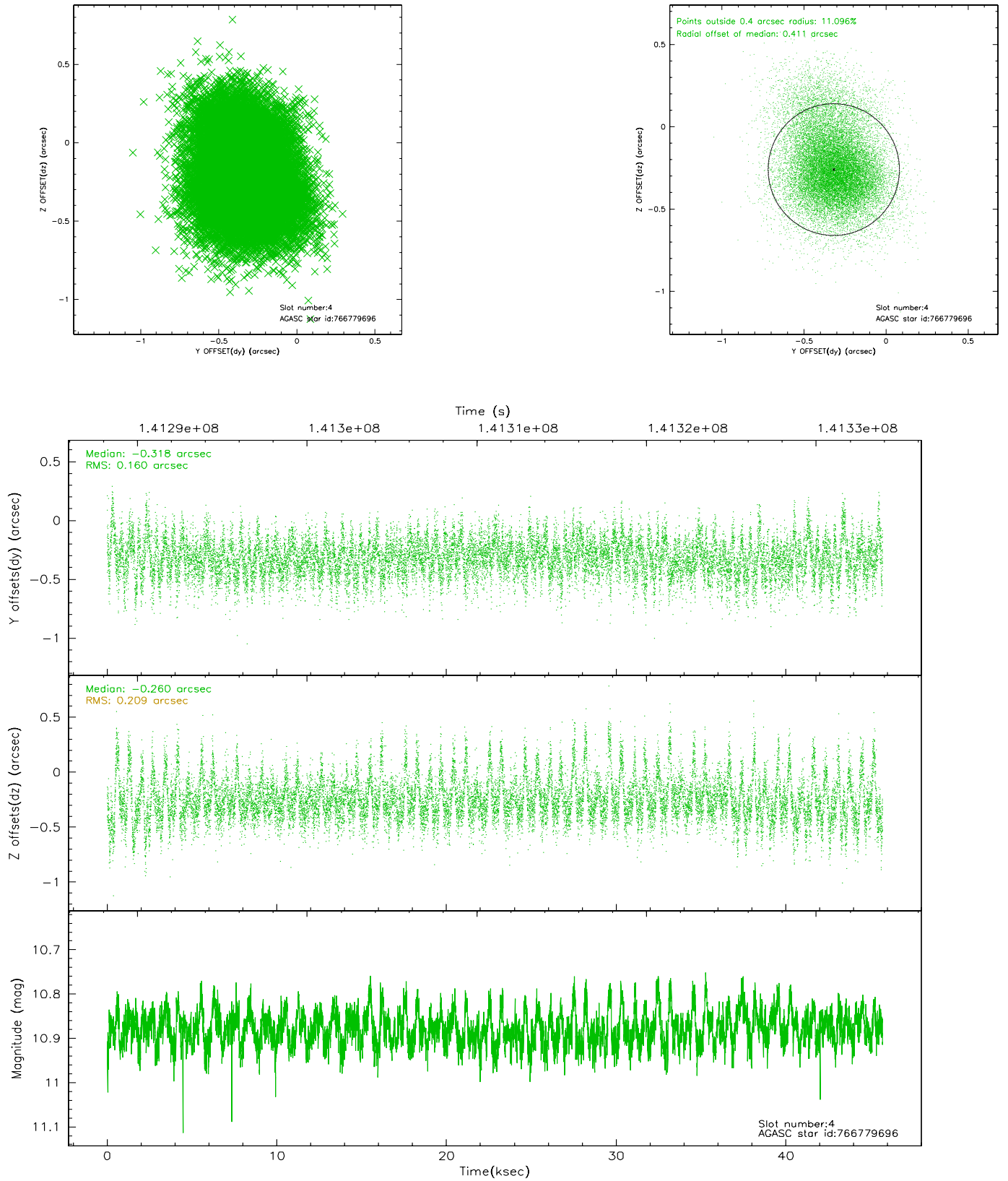
slot	status	id	mag	n_pts	med_dy	med_dz	dr1	dr2	ra	dec	mean_y	mean_z
0	FID	ACIS-I-1	7.24	11148	-0.046	0.088	0.006	0.011	0.000000	0.000000	937.54	-831.32
1	FID	ACIS-I-5	7.24	11149	-0.005	0.029	0.006	0.011	0.000000	0.000000	-1810.50	1066.16
2	FID	ACIS-I-6	7.26	11150	-0.040	-0.047	0.007	0.011	0.000000	0.000000	403.13	1710.55
3	GUIDE	767171568	9.97	22280	0.075	0.242	0.257	0.361	16.035890	-22.108834	-1690.60	-1247.30
4	GUIDE	766779696	10.88	21639	-0.318	-0.260	0.267	0.484	15.056781	-21.415428	1964.52	645.07
5	GUIDE	766777184	7.87	22293	0.493	0.308	0.080	0.120	15.615560	-21.610598	532.26	-748.46
6	GUIDE	766783464	9.21	22290	-0.040	-0.273	0.094	0.156	15.041422	-22.197983	-564.13	1887.21
7	GUIDE	766779344	10.03	22282	-0.189	-0.063	0.132	0.214	15.380905	-21.452302	1382.68	-281.05

2.4 Star Slots

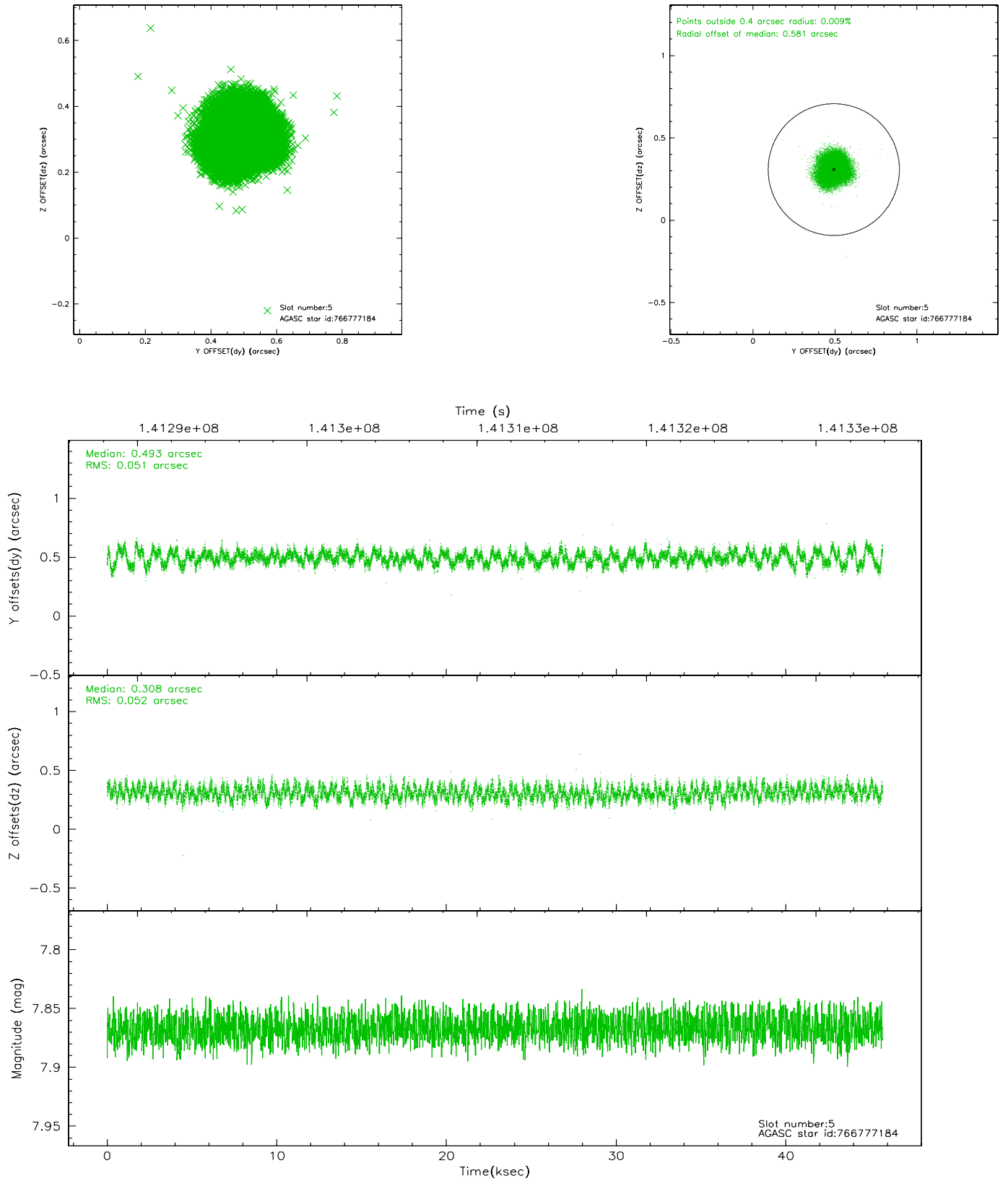
2.4.1 Slot 3



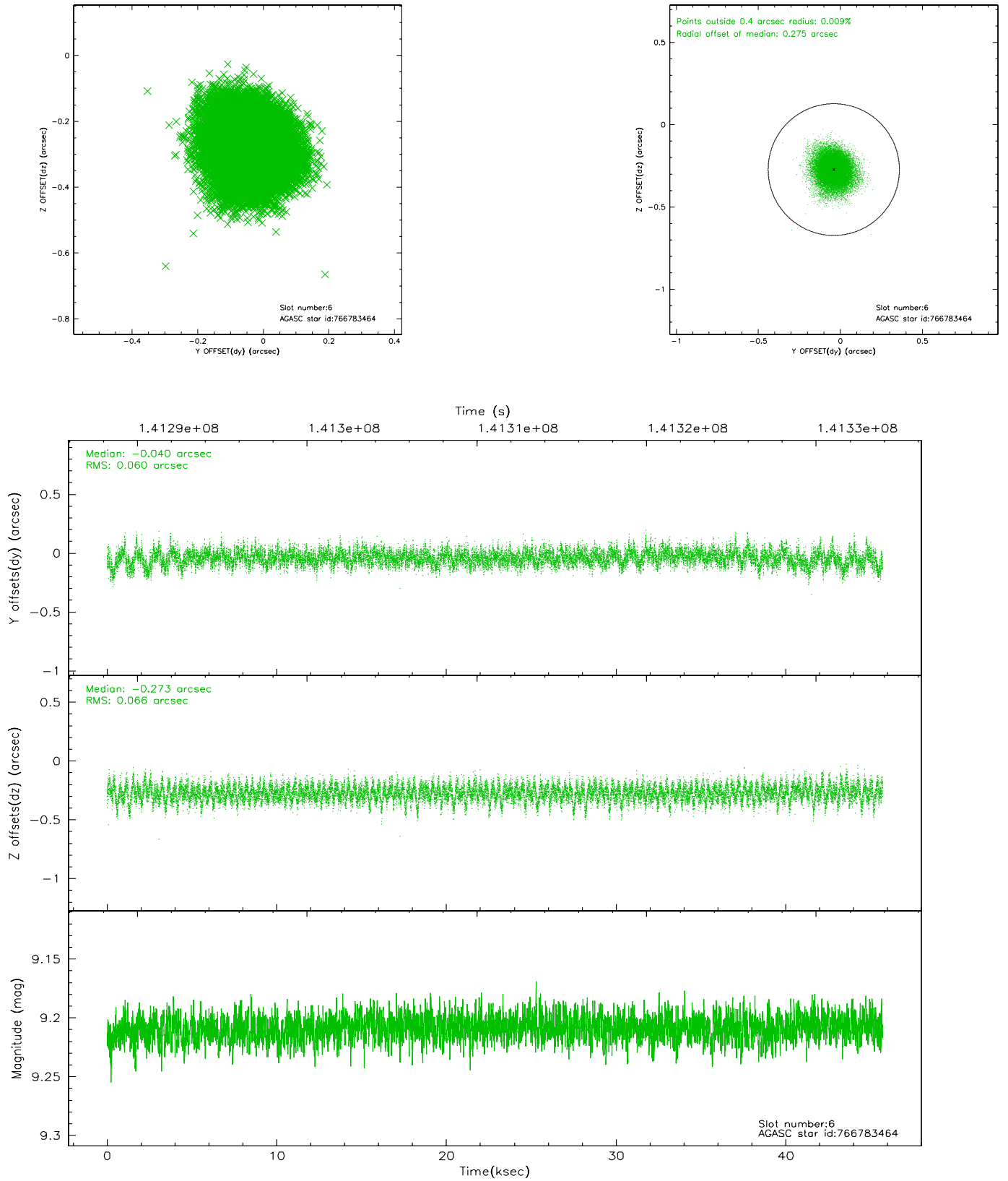
2.4.2 Slot 4



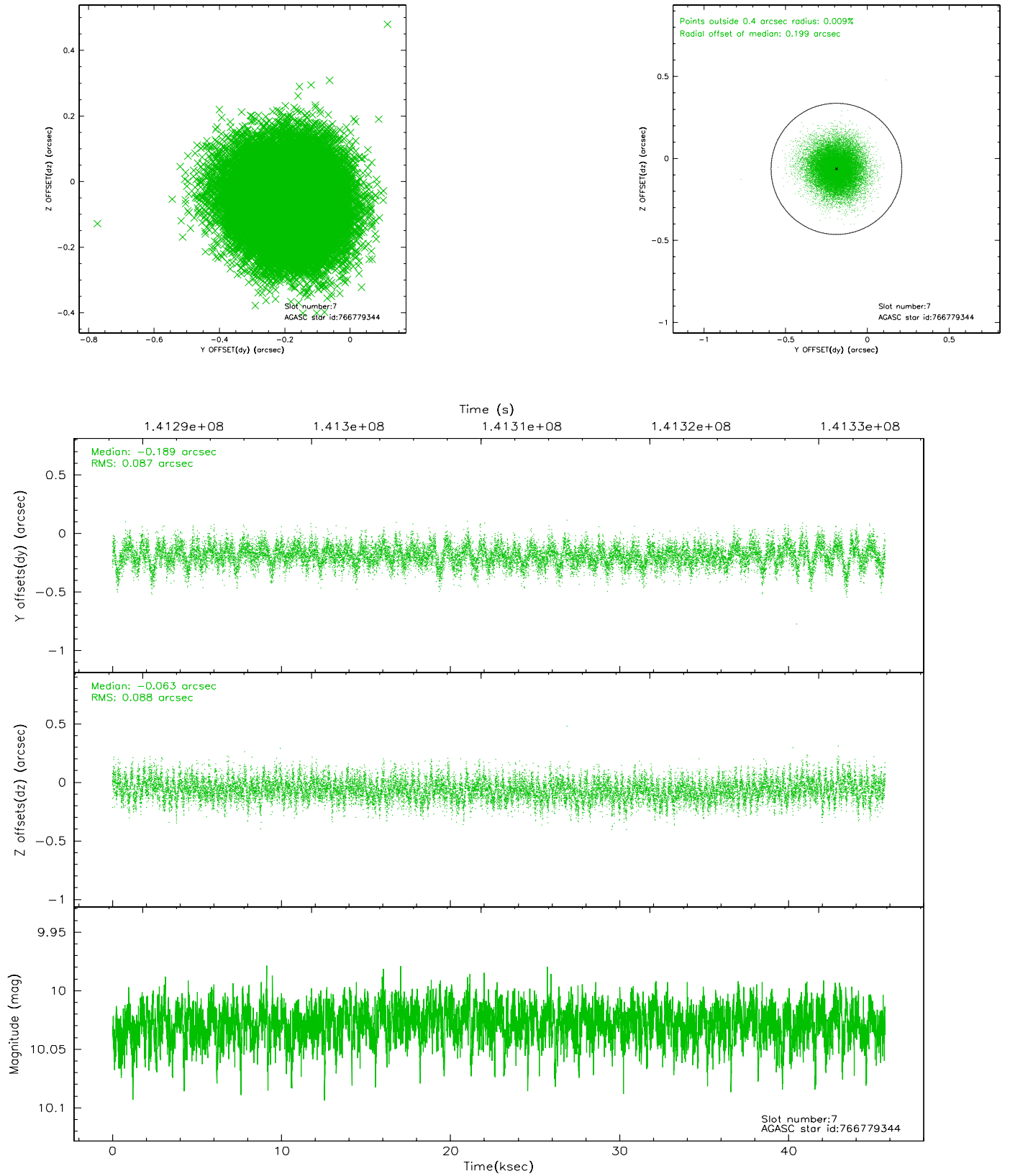
2.4.3 Slot 5



2.4.4 Slot 6

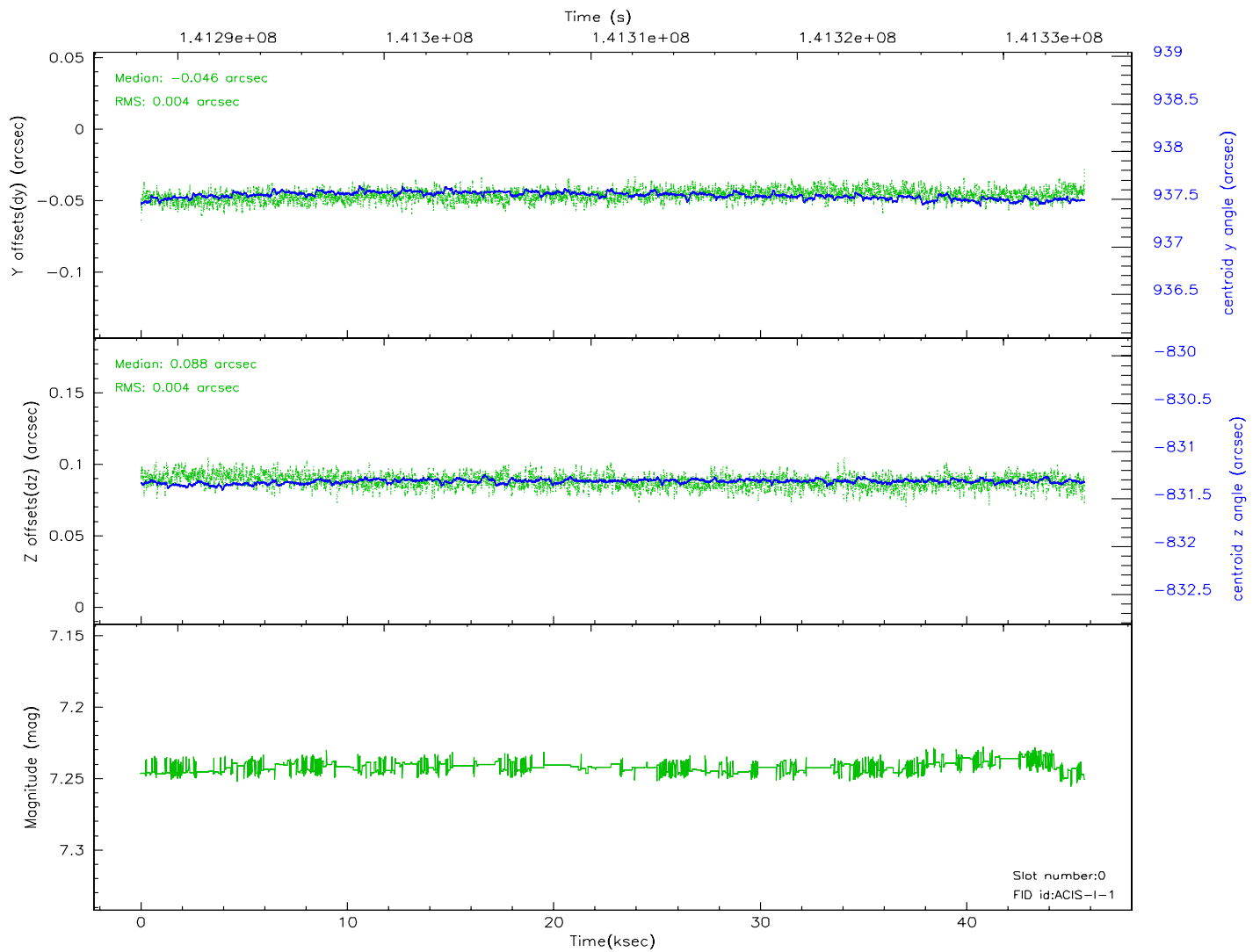
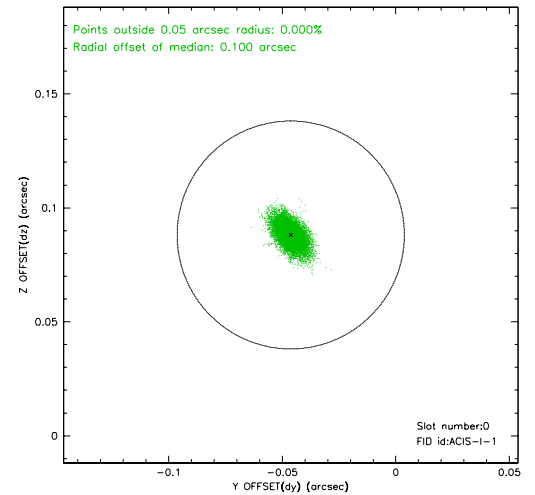
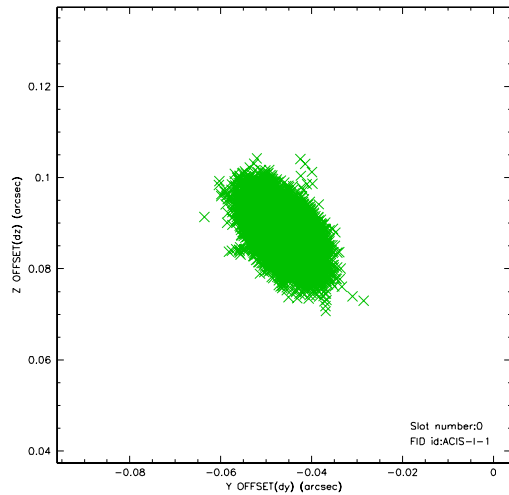


2.4.5 Slot 7

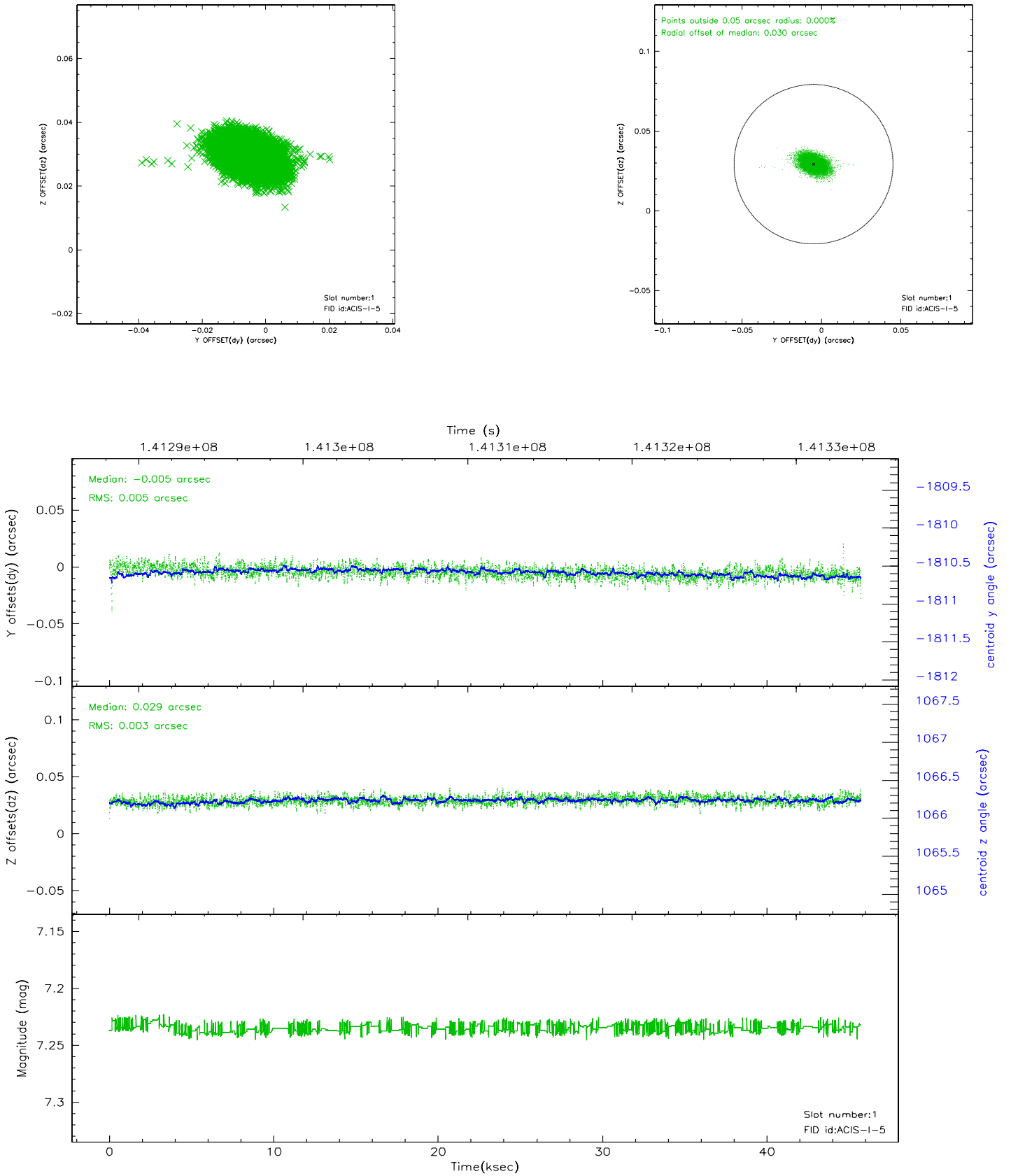


2.5 FID Slots

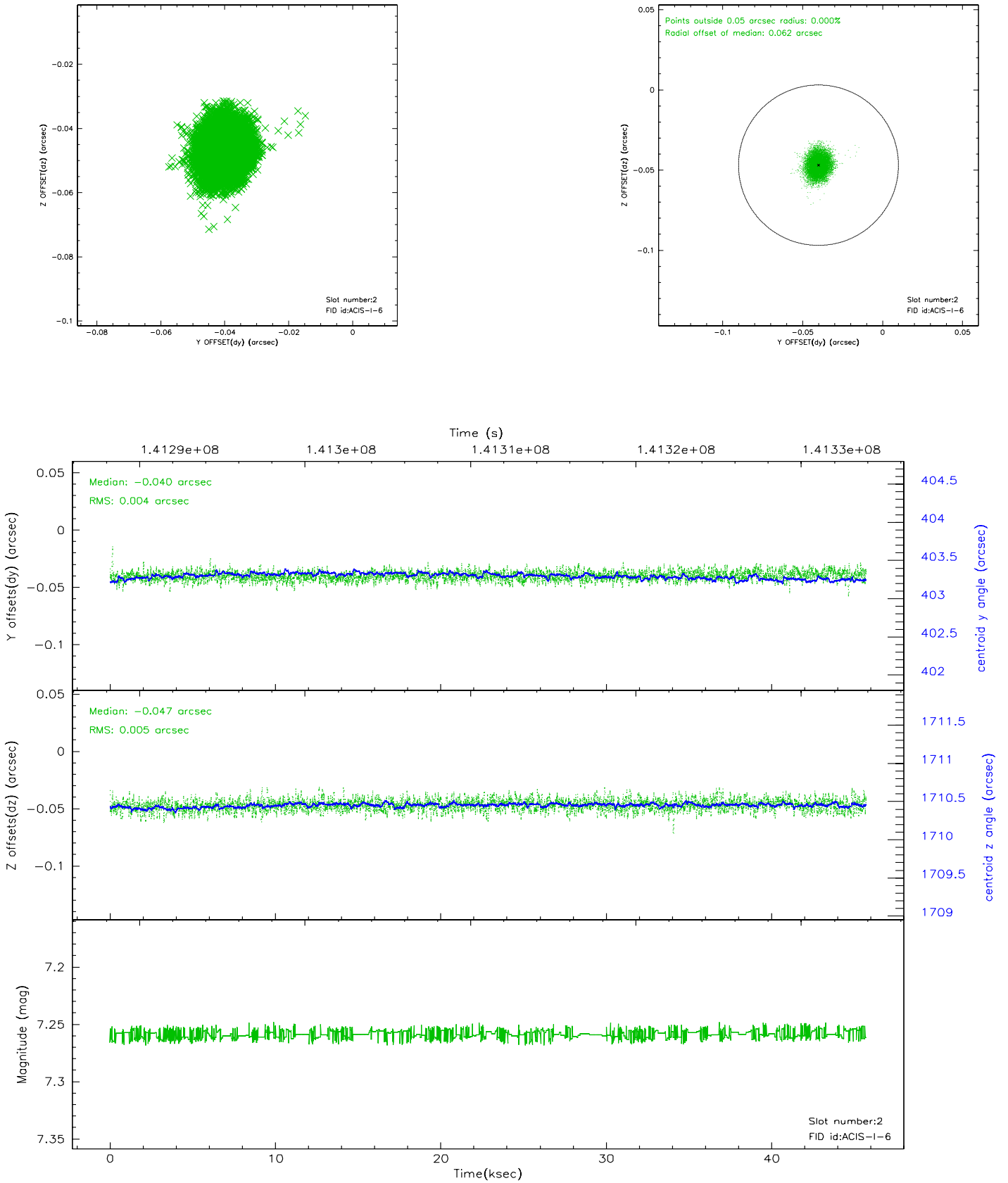
2.5.1 Slot 0



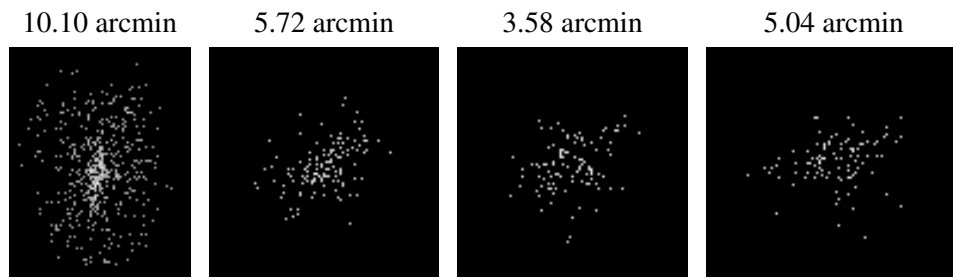
2.5.2 Slot 1



2.5.3 Slot 2



3 Point Sources



A Summary

A.1 Status

V&V Scientist	Joy Nichols
V&V Date (YYYY-MM-DD)	2006.09.21
V&V Edition	1
V&V Disposition and Status	OK
V&V Charge Time	45.114

A.2 Comments