

V&V Reference Report

L2 ASCDS Version : 7.6.9

Observation 3181 - L2 Version 001
Chandra X-Ray Center

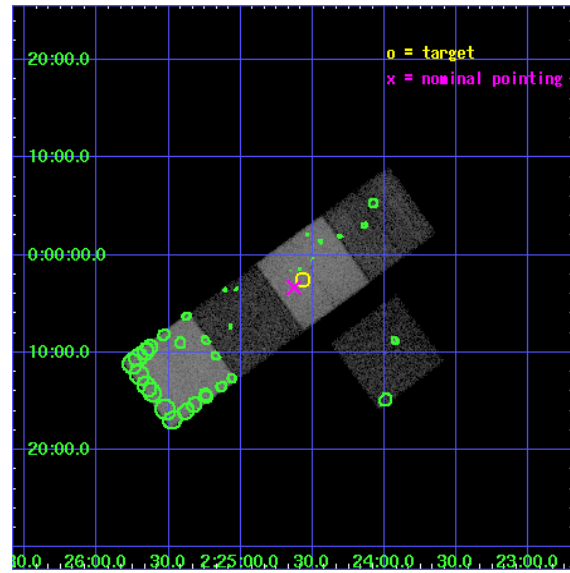
L2 Processing Date : Oct 9 2006

Contents

1	Front	2
2	OBI	3
2.1	OBI	3
2.1.1	Images	3
2.1.2	Bias	3
2.1.3	Parameters	4
2.1.4	Events	4
2.2	Compared Parameters	5
2.3	Aspect	6
2.4	Star Slots	9
2.4.1	Slot 3	9
2.4.2	Slot 4	10
2.4.3	Slot 5	11
2.4.4	Slot 6	12
2.4.5	Slot 7	13
2.5	FID Slots	14
2.5.1	Slot 0	14
2.5.2	Slot 1	15
2.5.3	Slot 2	16
3	Point Sources	17
A	Summary	18
A.1	Status	18
A.2	Comments	18

1 Front

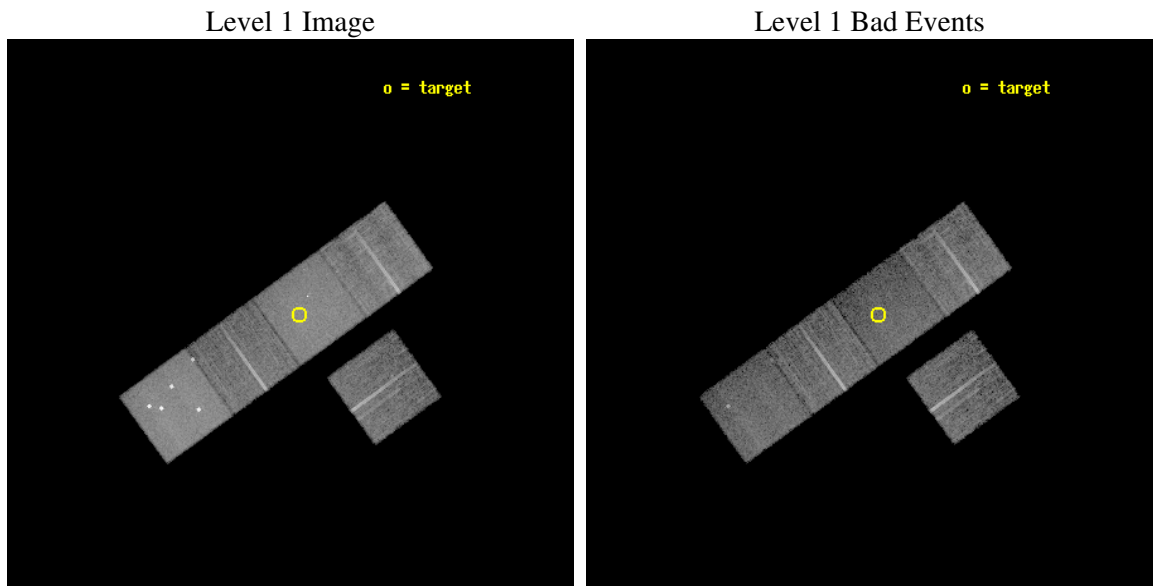
seq_num	800181
obs_id	3181
title	A NEW GALAXY CLUSTER STRONG LENS
observer	Dr Michael Gladders
object	RCS0224-0002
dtcycle	0
cycle	P
ra_targ	36.142083
dec_targ	-0.041917
ra_nom	36.157786340901
dec_nom	-0.055434730758273
roll_nom	324.02773104007
revision	2
ontime	14560.699972004
livedtime	14370.453707438
ontime3	14560.699972004
ontime5	14560.699972004
ontime6	14560.699972004
ontime7	14560.699972004
ontime8	14560.699972004
l2events	164760



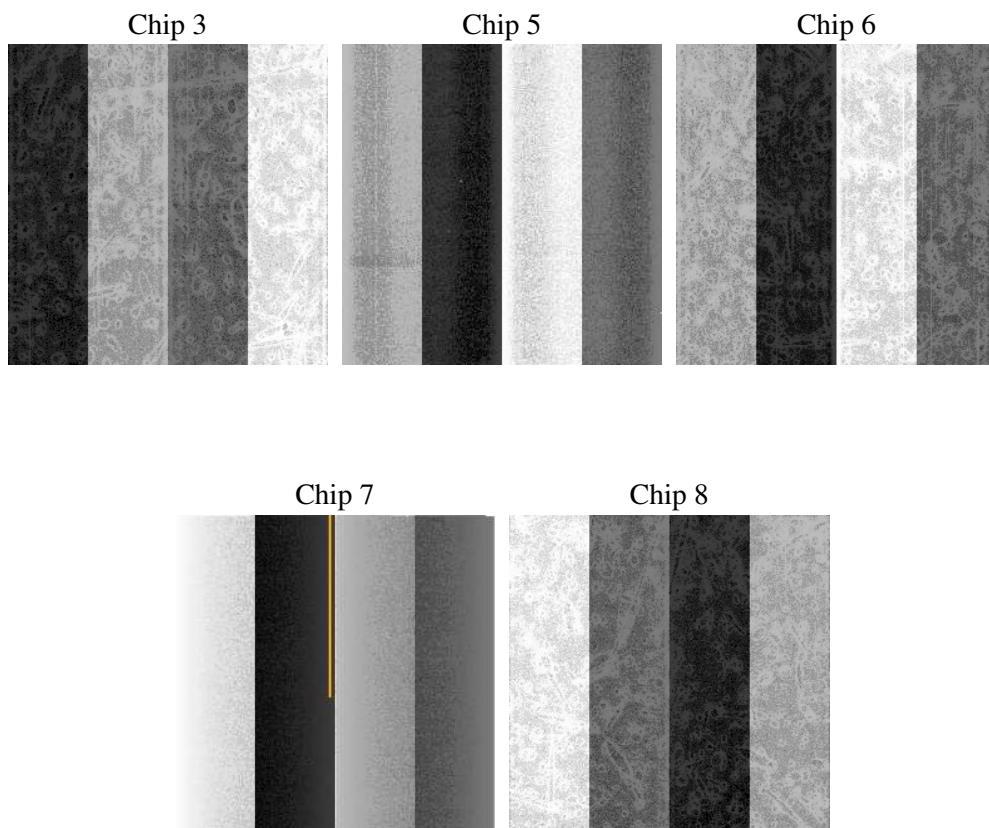
2 OBI

2.1 OBI

2.1.1 Images



2.1.2 Bias



2.1.3 Parameters

obi_num	2
ascdsver	7.6.9
caldbver	3.2.3
date	2006-10-09T14:27:02
revision	2

sched_exp_time	14381.956000
ontime	15127.102819562
ontime3	15127.102819562
ontime5	15127.102819562
ontime6	15127.102819562
ontime7	15127.102819562
ontime8	15127.102819562
l1events	536768

2.1.4 Events

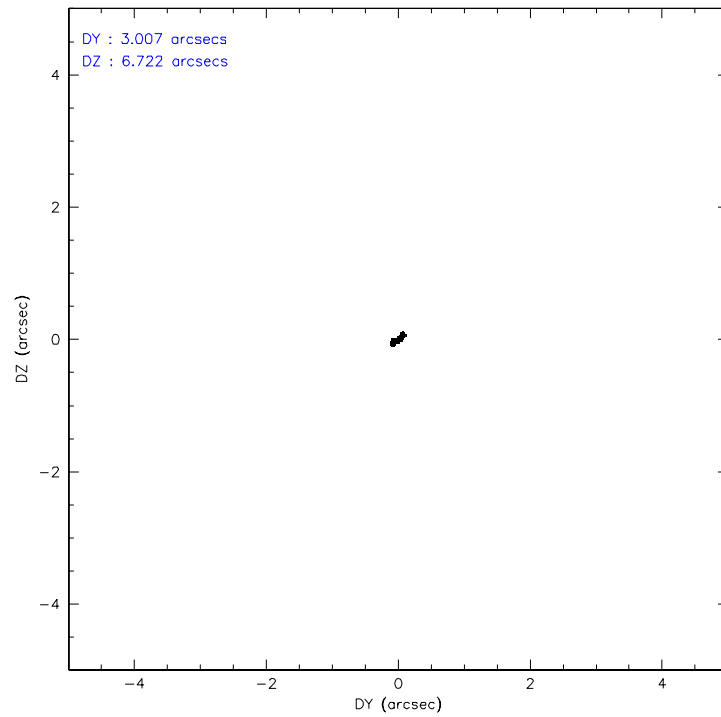
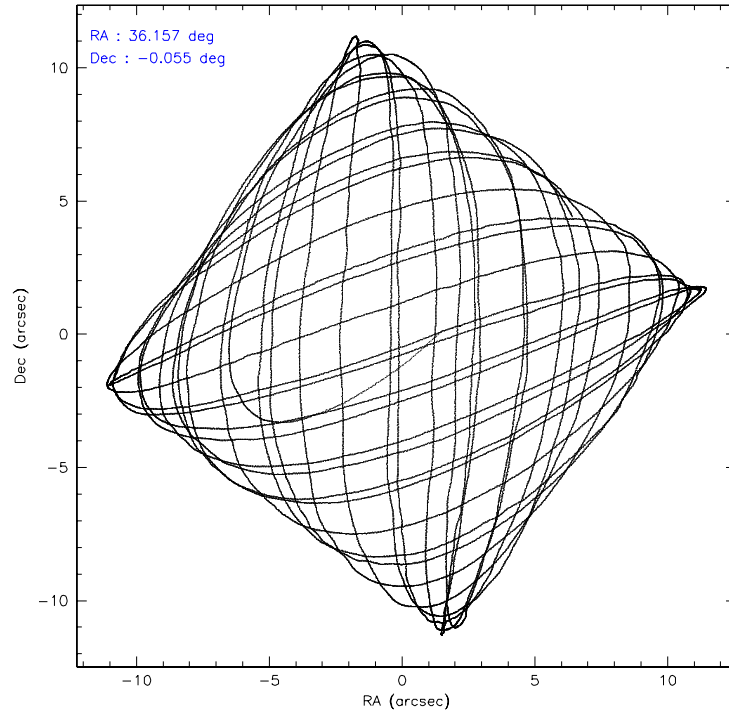
	ccd 3	ccd 5	ccd 6	ccd 7	ccd 8
level 1 events	77189	148274	84475	118770	108060
rejected events	68672	61669	72447	54937	81636
rejected %	88%	41%	85%	46%	75%

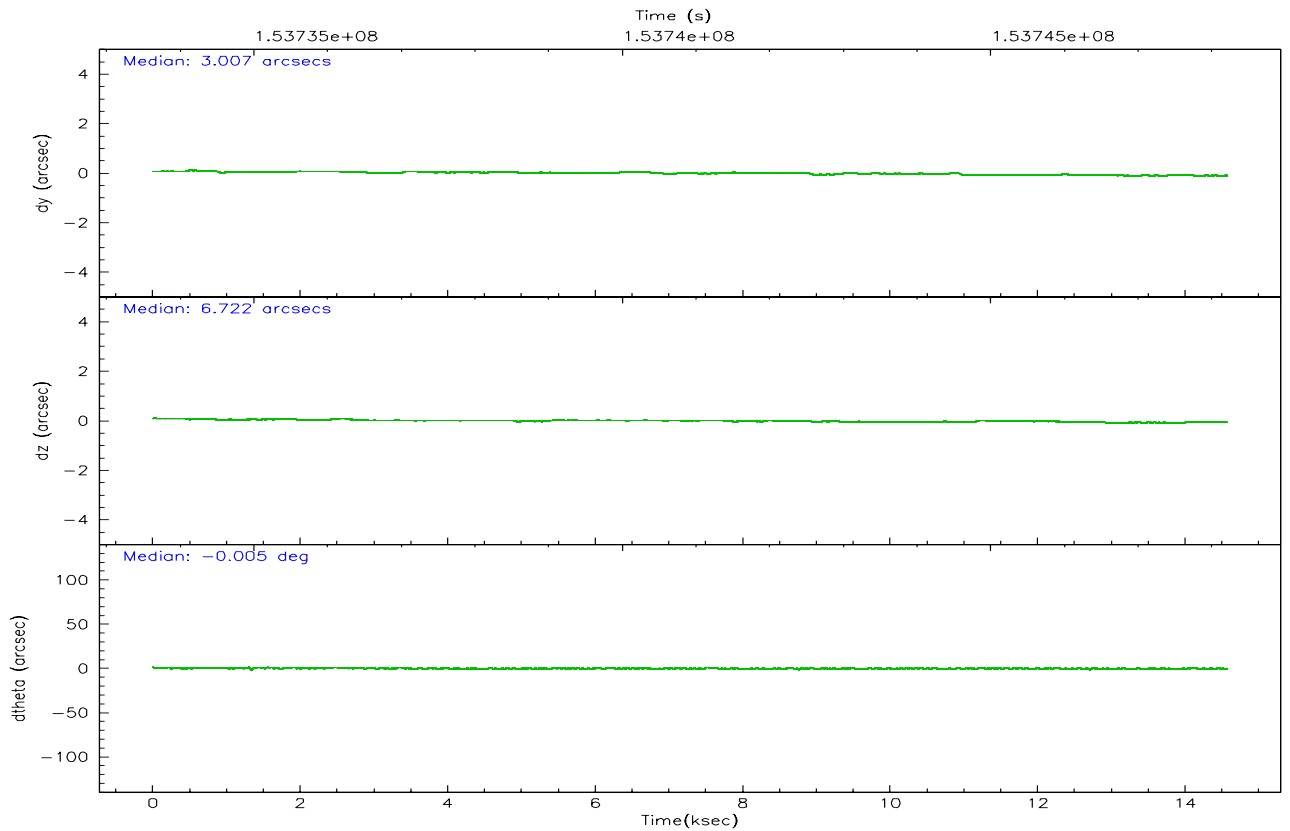
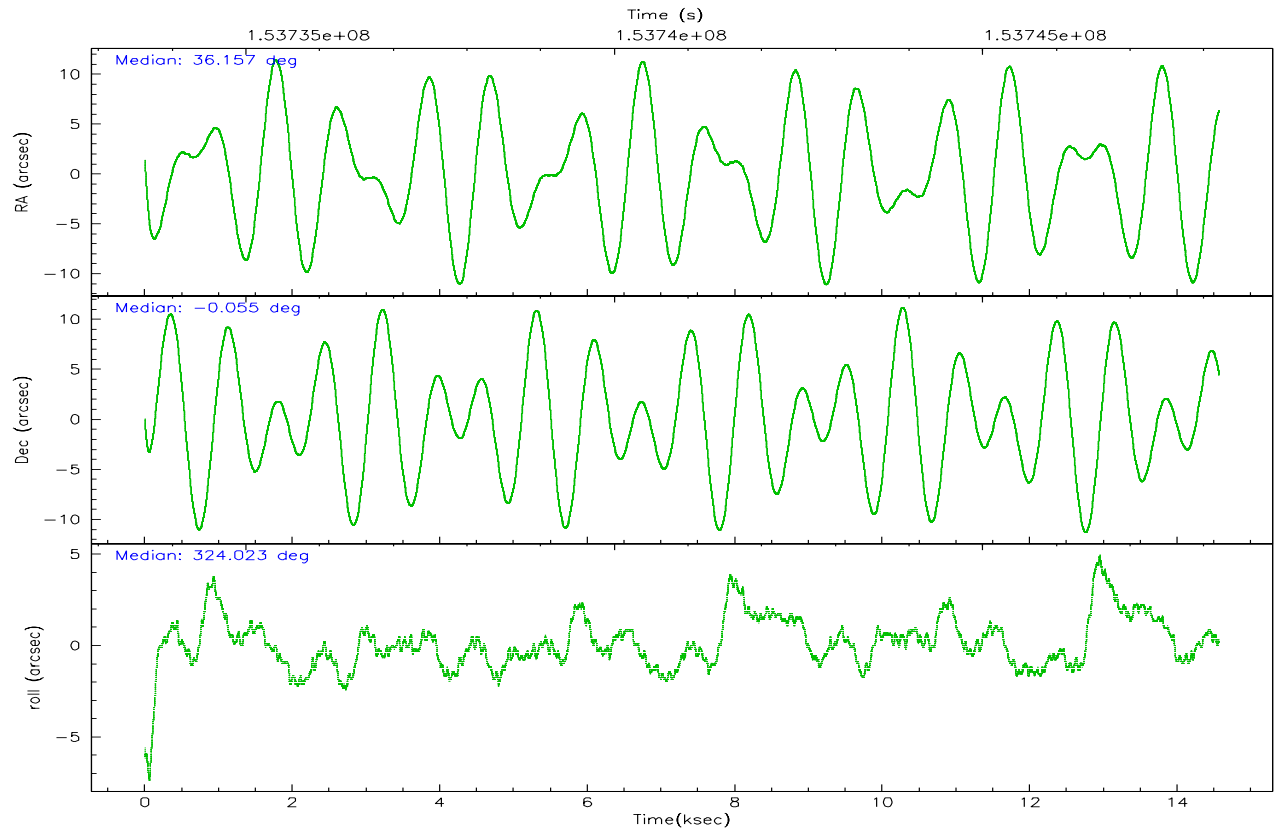
	ccd 3	ccd 5	ccd 6	ccd 7	ccd 8
grade 0 events	4016	17126	6517	5426	11419
	5%	11%	7%	4%	10%
grade 1 events	39	558	47	45	77
	0%	0%	0%	0%	0%
grade 2 events	1542	26491	2057	14797	5295
	1%	17%	2%	12%	4%
grade 3 events	913	2461	999	3830	2378
	1%	1%	1%	3%	2%
grade 4 events	872	2266	974	3862	2142
	1%	1%	1%	3%	1%
grade 5 events	2896	5970	3160	6815	4343
	3%	4%	3%	5%	4%
grade 6 events	1440	40343	1756	37350	6057
	1%	27%	2%	31%	5%
grade 7 events	65471	53059	68965	46645	76349
	84%	35%	81%	39%	70%

2.2 Compared Parameters

Parameter	Planned	Actual	Parameter	Planned	Actual
Instrument	ACIS	ACIS	Obspar format version number	6	6
Detector	ACIS-35678	ACIS-35678	Obspar file type	PREDICTED	ACTUAL
Grating	NONE	NONE	Obspar update status	NONE	UPDATED
Data mode	VFAINT	VFAINT	Number of optional ACIS chips dropped	0	0
Observation mode	POINTING	POINTING	On-chip summing requested	N	N
Pointing RA	36.130688	36.157786340901	Subarray requested	NONE	NONE
Pointing Dec	-0.053001	-0.05543473075827253	Alternating exposures requested	N	N
Pointing Roll	323.871077	324.0277310400711	Primary exposure time	0.000000	3.1
SIM focus pos (mm)	-0.684267	-0.6828225247311905			
SIM defocus (mm)	0	0.001444936568705701			
SIM translation stage pos (mm)	-190.132523	-190.1425803651734			
SIM translation stage offset (mm)	0	0.01005778216563158			
Observation start time	153733823.184000	153732527.33655			
Observation start date	2002-11-15T07:49:19	2002-11-15T07:28:47			
Observation end time	153748205.184000	153748519.38722			
Observation end date	2002-11-15T11:49:01	2002-11-15T11:55:19			
Read mode	TIMED	TIMED			

2.3 Aspect



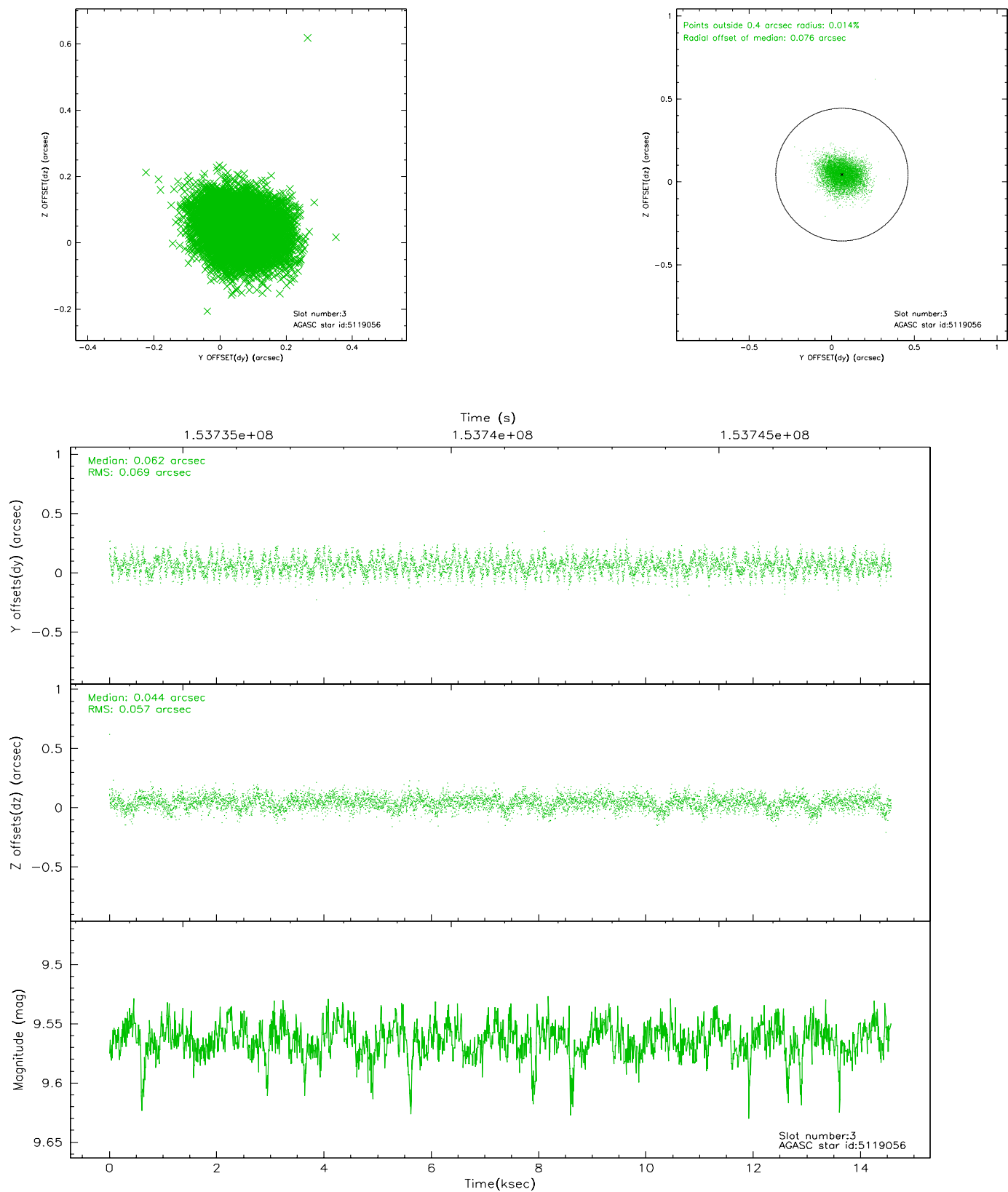


Slot Statistics

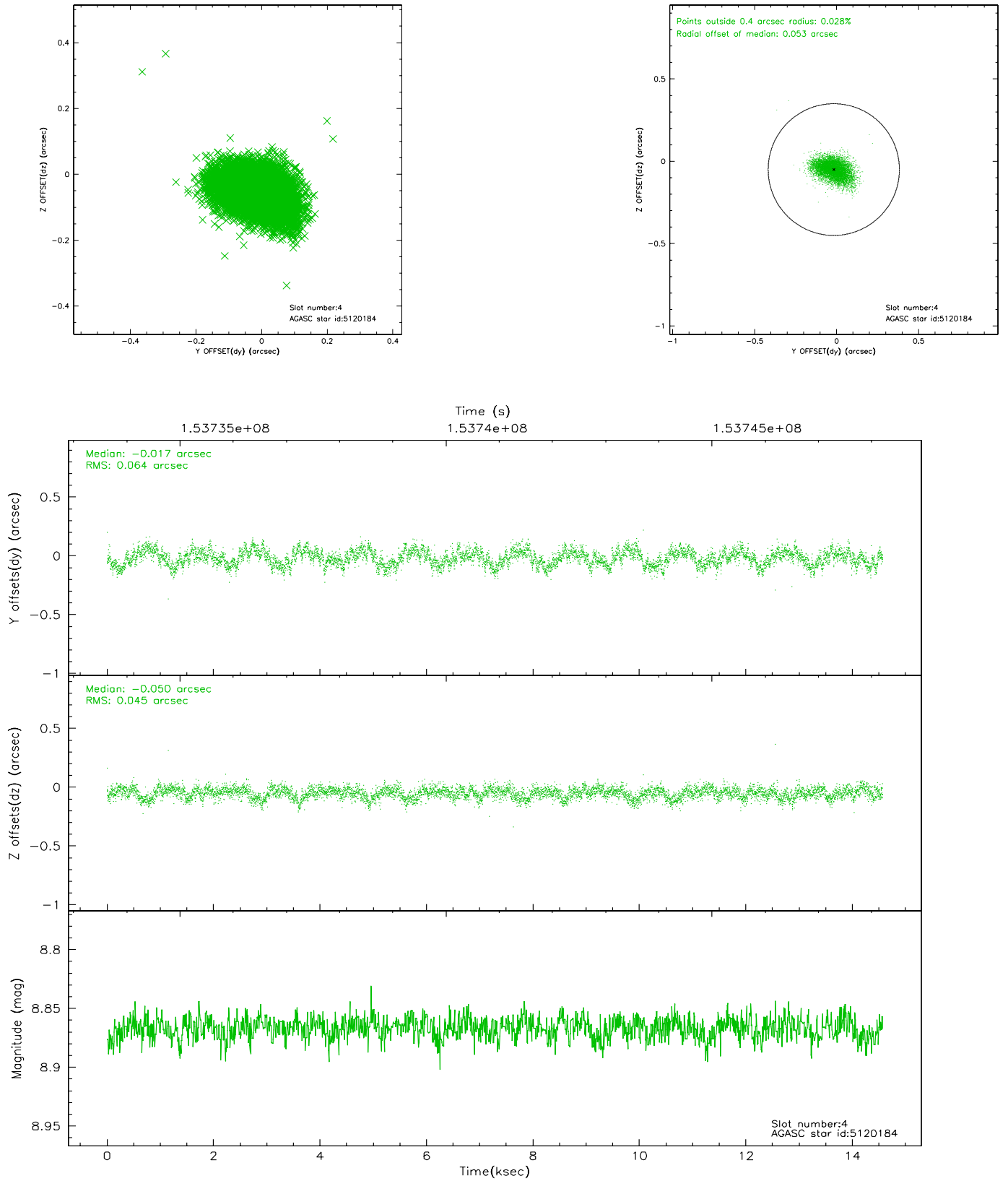
slot	status	id	mag	n_pts	med_dy	med_dz	dr1	dr2	ra	dec	mean_y	mean_z
0	FID	ACIS-S-2	7.12	3554	-0.018	0.023	0.007	0.011	0.000000	0.000000	-755.64	-1727.81
1	FID	ACIS-S-4	7.20	3553	-0.033	0.003	0.005	0.009	0.000000	0.000000	2157.46	180.36
2	FID	ACIS-S-5	7.24	3553	0.020	-0.017	0.007	0.012	0.000000	0.000000	-1808.06	174.32
3	GUIDE	5119056	9.56	7096	0.062	0.044	0.095	0.152	36.799344	0.156256	1501.60	2028.01
4	GUIDE	5120184	8.87	7106	-0.017	-0.050	0.082	0.136	35.687918	0.425094	-2300.51	450.45
5	GUIDE	614865392	7.32	7099	-0.099	-0.000	0.052	0.087	35.431996	-0.351339	-1396.88	-2350.49
6	GUIDE	614866048	9.33	7104	0.061	-0.036	0.108	0.171	35.542724	-0.257167	-1274.64	-1842.05
7	GUIDE	614866304	8.61	7107	-0.007	0.050	0.071	0.109	35.871551	-0.547495	297.68	-1987.96

2.4 Star Slots

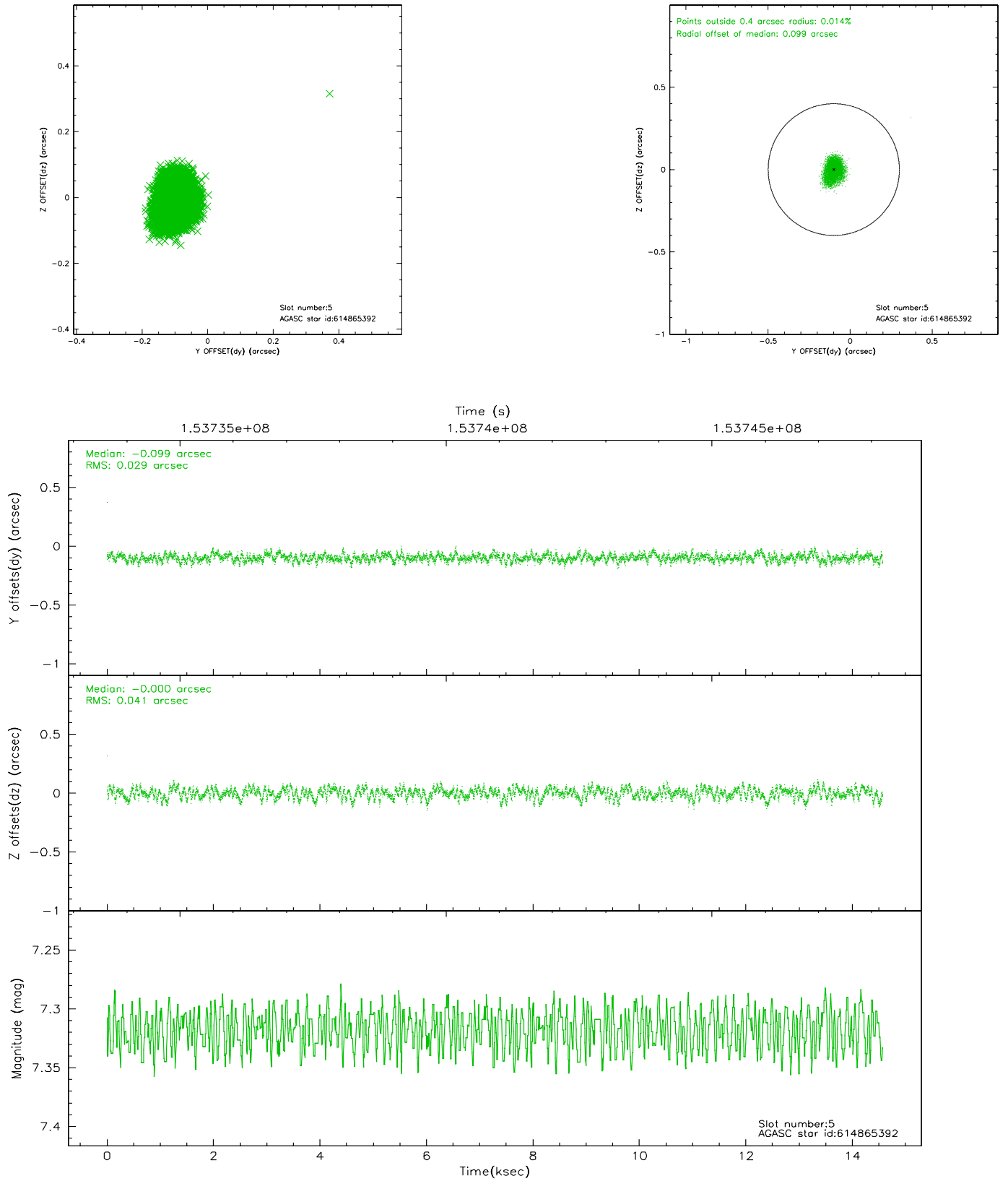
2.4.1 Slot 3



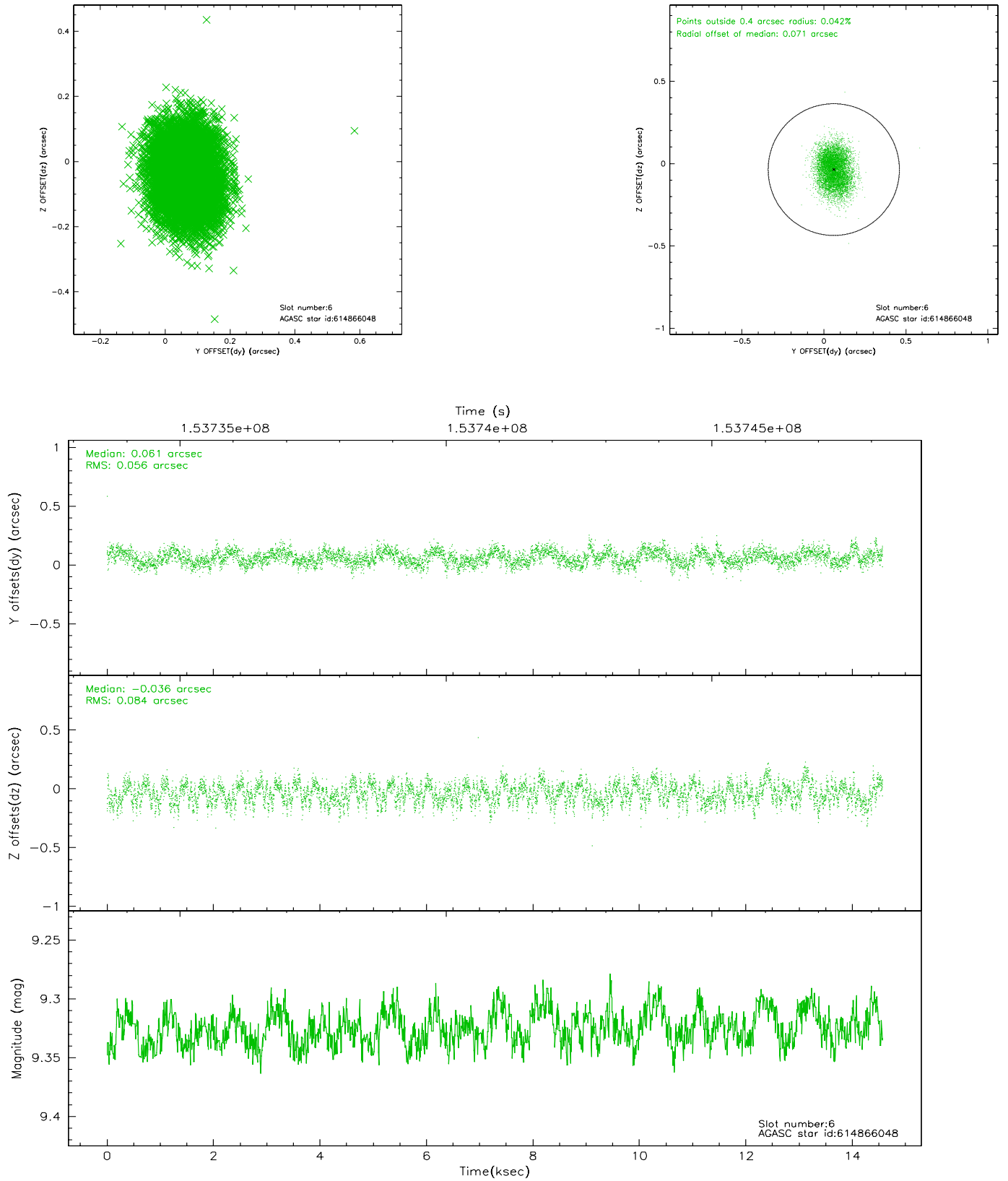
2.4.2 Slot 4



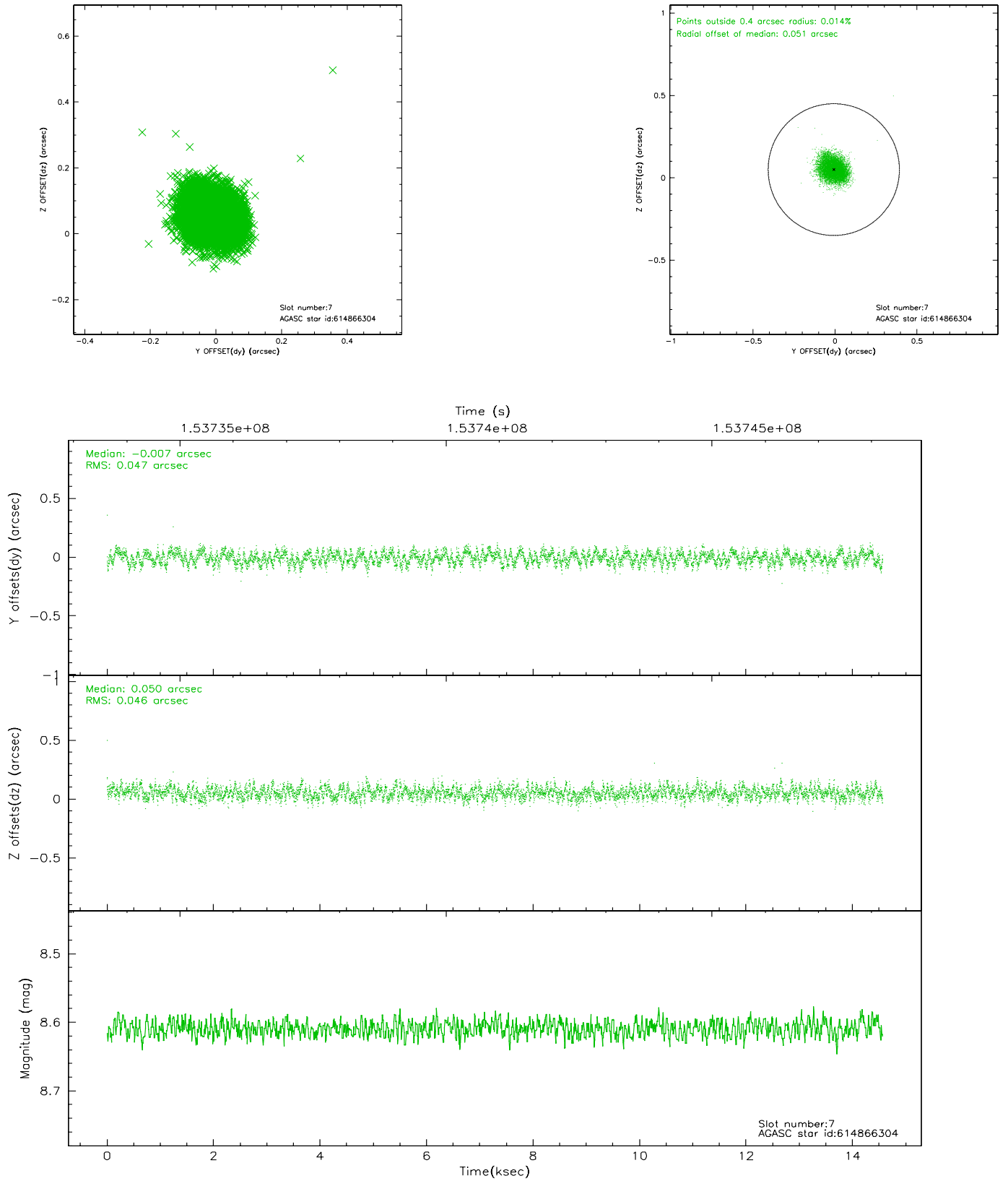
2.4.3 Slot 5



2.4.4 Slot 6

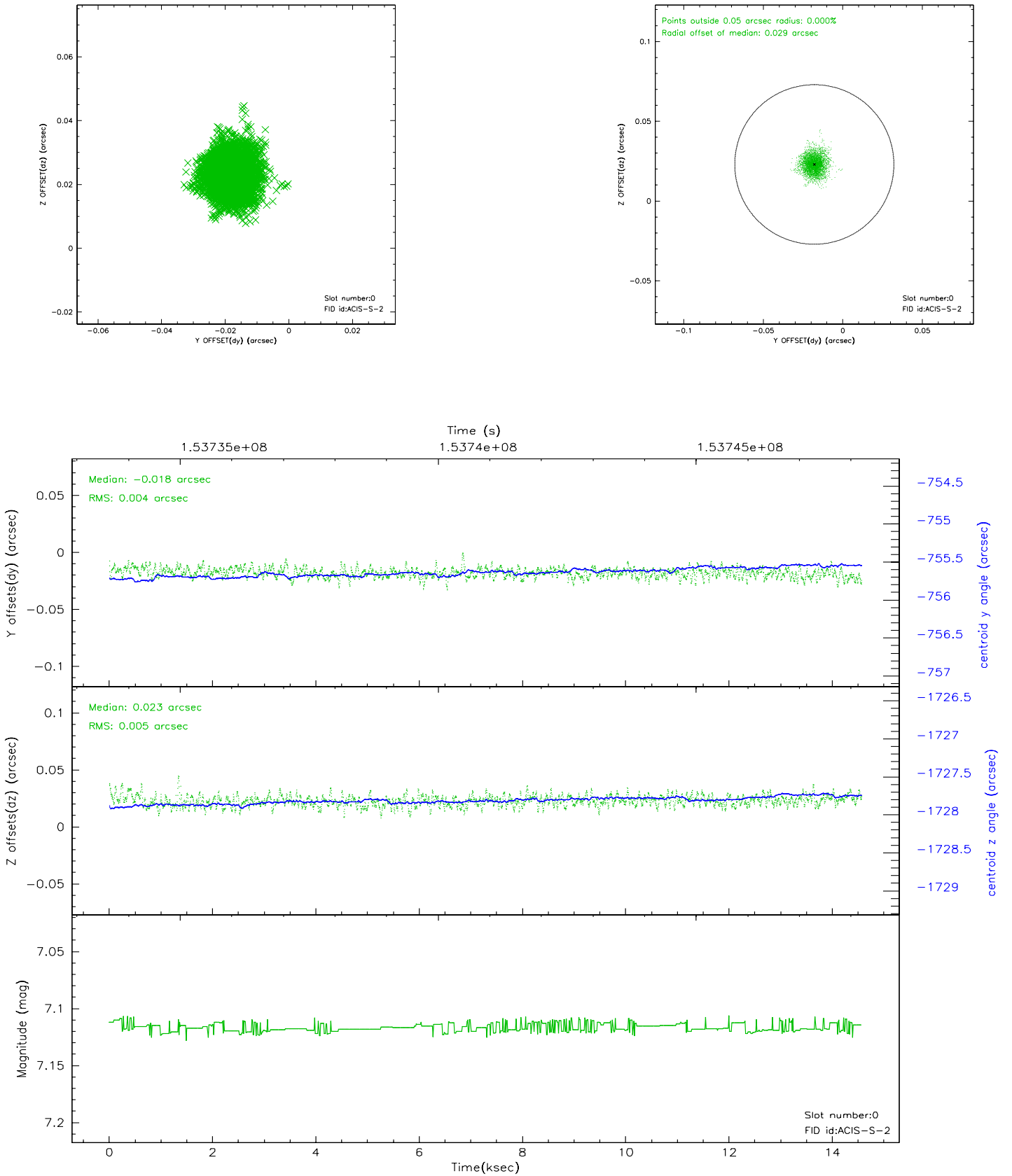


2.4.5 Slot 7

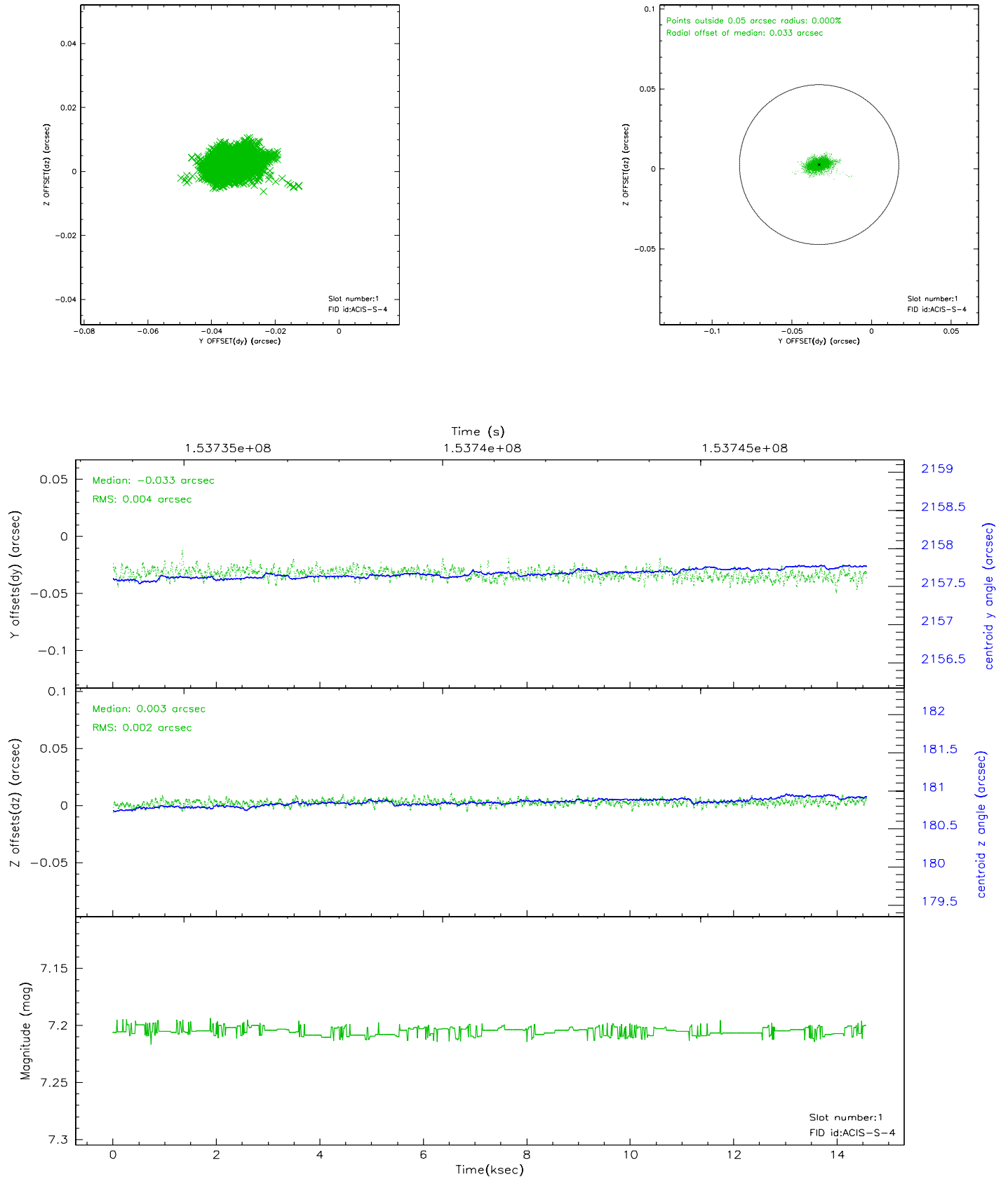


2.5 FID Slots

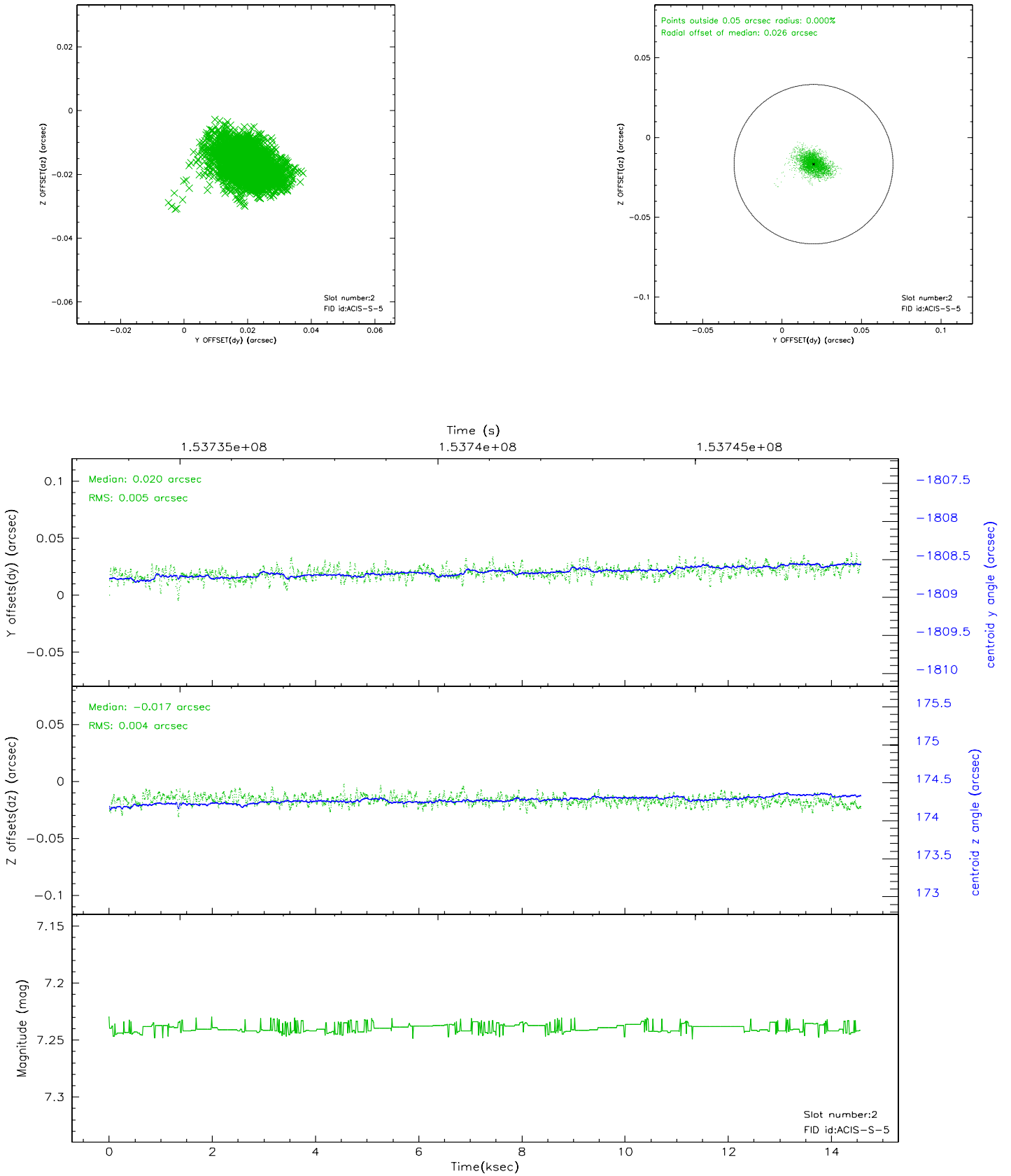
2.5.1 Slot 0



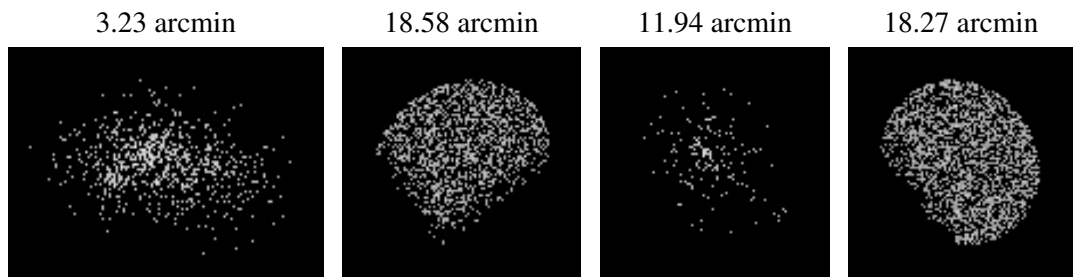
2.5.2 Slot 1



2.5.3 Slot 2



3 Point Sources



A Summary

A.1 Status

V&V Scientist	Beth Sundheim
V&V Date (YYYY-MM-DD)	2006.10.10
V&V Edition	1
V&V Disposition and Status	OK
V&V Charge Time	14.56

A.2 Comments