

V&V Reference Report

L2 ASCDS Version : 7.6.9

Observation 3160 - L2 Version 001
Chandra X-Ray Center

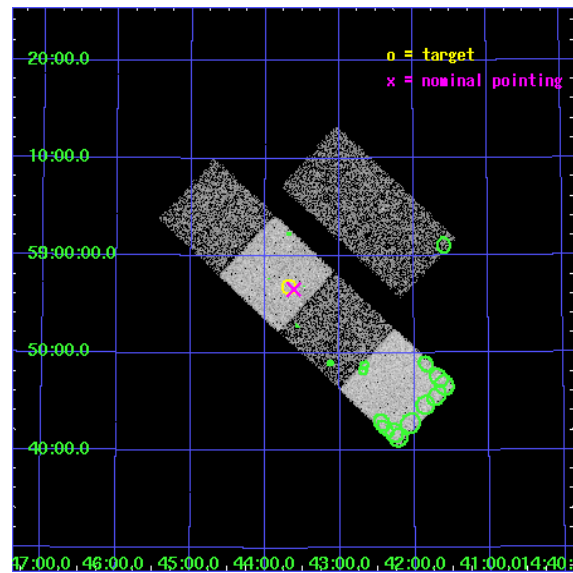
L2 Processing Date : Sep 19 2006

Contents

1	Front	2
2	OBI	3
2.1	OBI	3
2.1.1	Images	3
2.1.2	Bias	3
2.1.3	Parameters	4
2.1.4	Events	4
2.2	Compared Parameters	5
2.3	Aspect	6
2.4	Star Slots	9
2.4.1	Slot 3	9
2.4.2	Slot 4	10
2.4.3	Slot 5	11
2.4.4	Slot 6	12
2.4.5	Slot 7	13
2.5	FID Slots	14
2.5.1	Slot 0	14
2.5.2	Slot 1	15
2.5.3	Slot 2	16
3	Point Sources	17
A	Summary	18
A.1	Status	18
A.2	Comments	18

1 Front

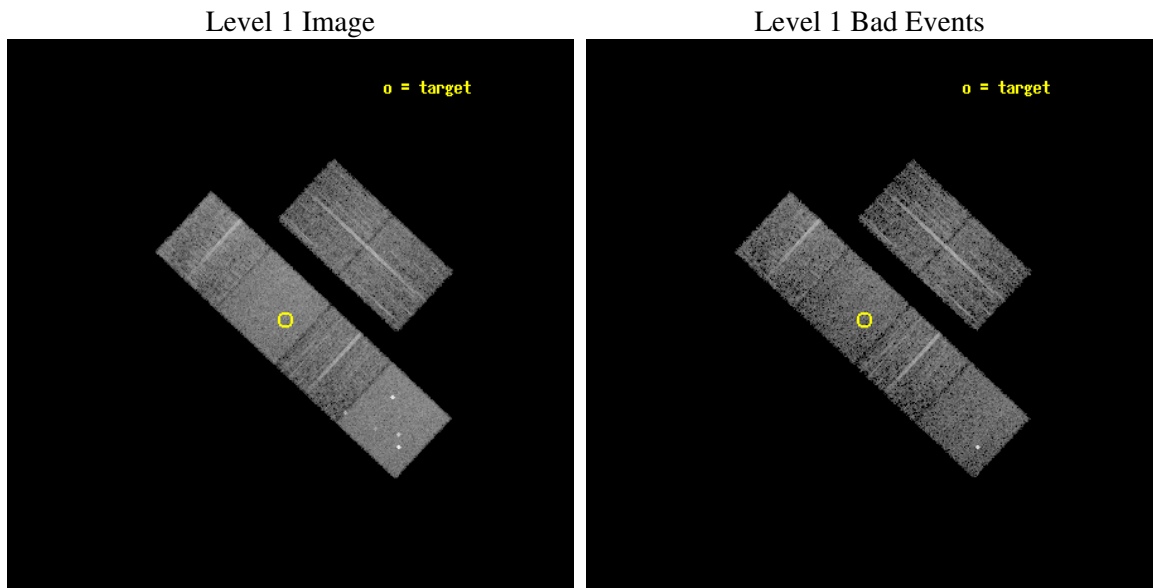
seq_num	700599
obs_id	3160
title	A CHANDRA SURVEY OF THE MOST LUMINOUS QUASARS AT $Z > 4$
observer	Professor Gordon Garmire
object	PSS1443+5856
dtcycle	0
cycle	P
ra_targ	220.92
dec_targ	58.948056
ra_nom	220.90435150245
dec_nom	58.942770370296
roll_nom	223.00955213144
revision	2
ontime	5865.5999781489
livetime	5791.3262193853
ontime2	5865.5999781489
ontime3	5865.5999781489
ontime5	5865.5999781489
ontime6	5865.5999781489
ontime7	5865.5999781489
ontime8	5865.5999781489
l2events	56941



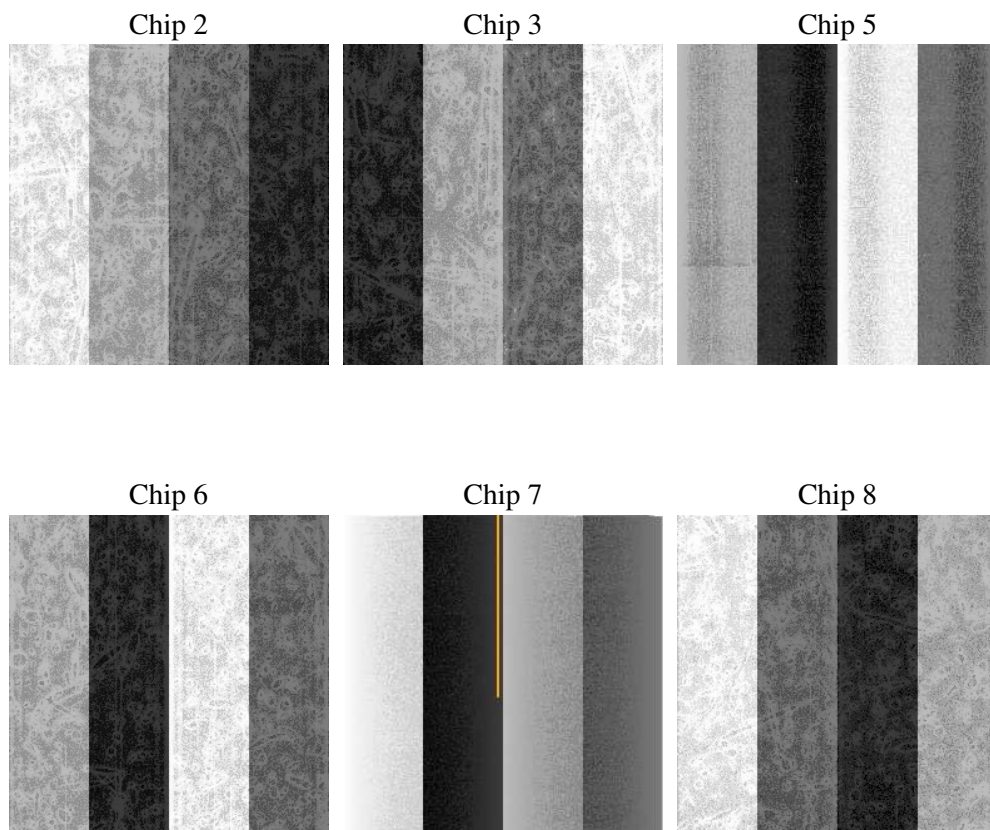
2 OBI

2.1 OBI

2.1.1 Images



2.1.2 Bias



2.1.3 Parameters

obi_num	0
ascdsver	7.6.9
caldsver	3.2.3
date	2006-09-19T17:39:34
revision	2

sched_exp_time	5700.000000
ontime	5872.6972104609
ontime2	5872.6971905529
ontime3	5872.6971905529
ontime5	5872.6972104609
ontime6	5872.6971905529
ontime7	5872.6972104609
ontime8	5872.6971905529
l1events	267216

2.1.4 Events

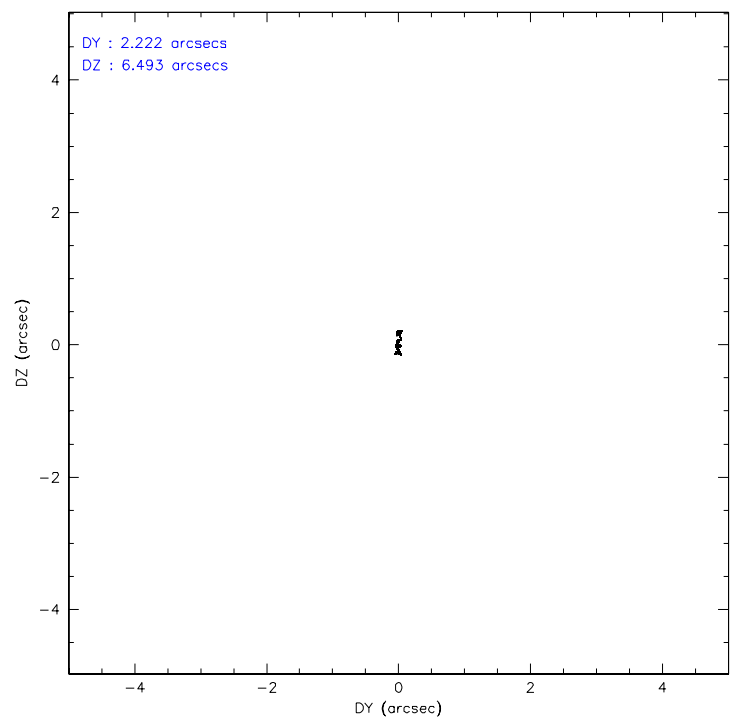
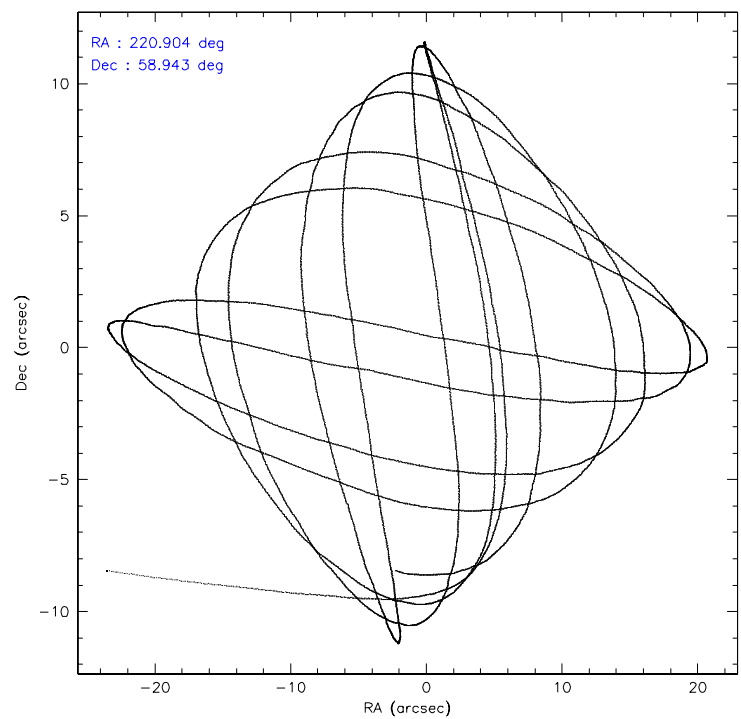
	ccd 2	ccd 3	ccd 5	ccd 6	ccd 7	ccd 8
level 1 events	37805	35844	56937	38182	50360	48088
rejected events	33407	31654	31193	33498	31240	38021
rejected %	88%	88%	54%	87%	62%	79%

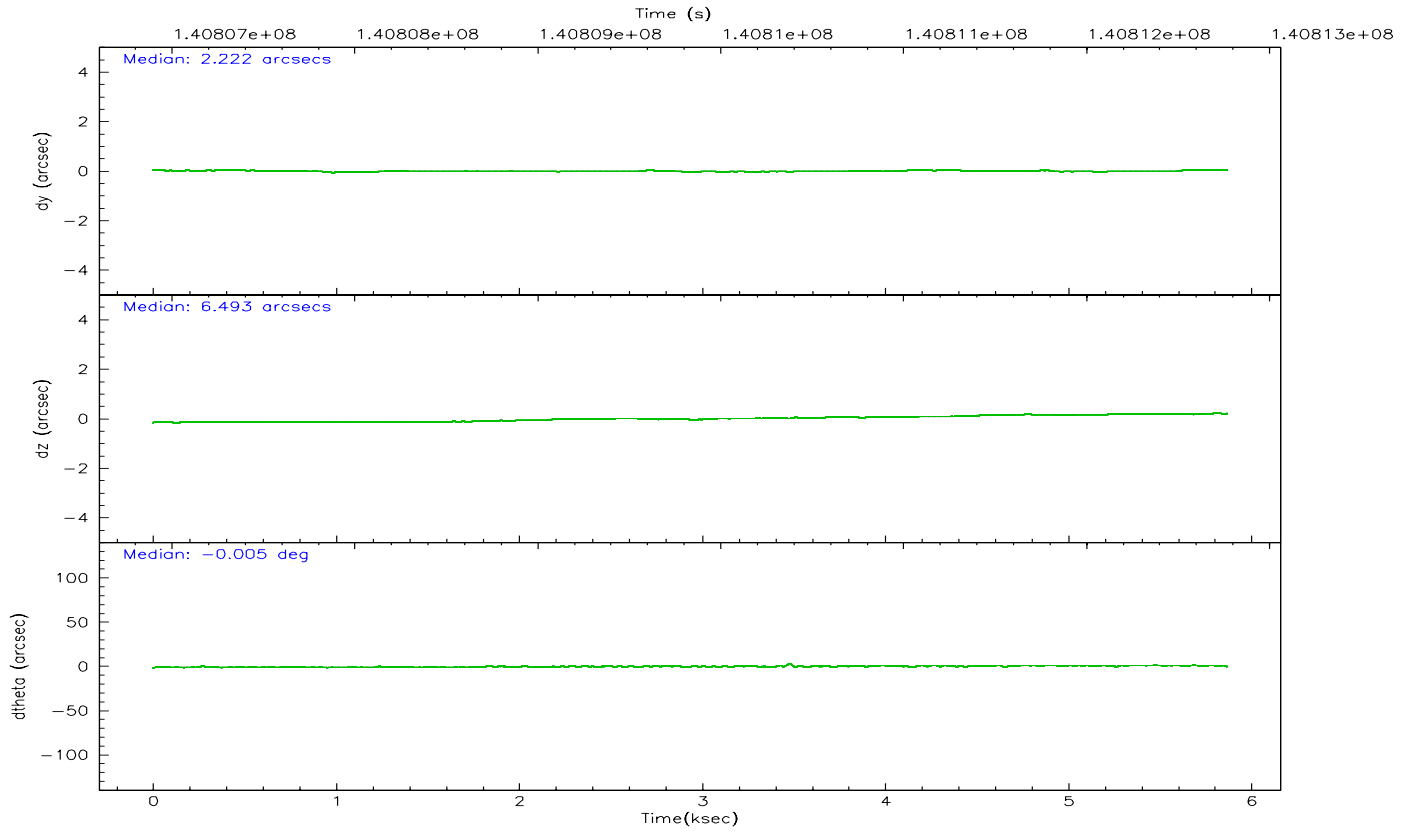
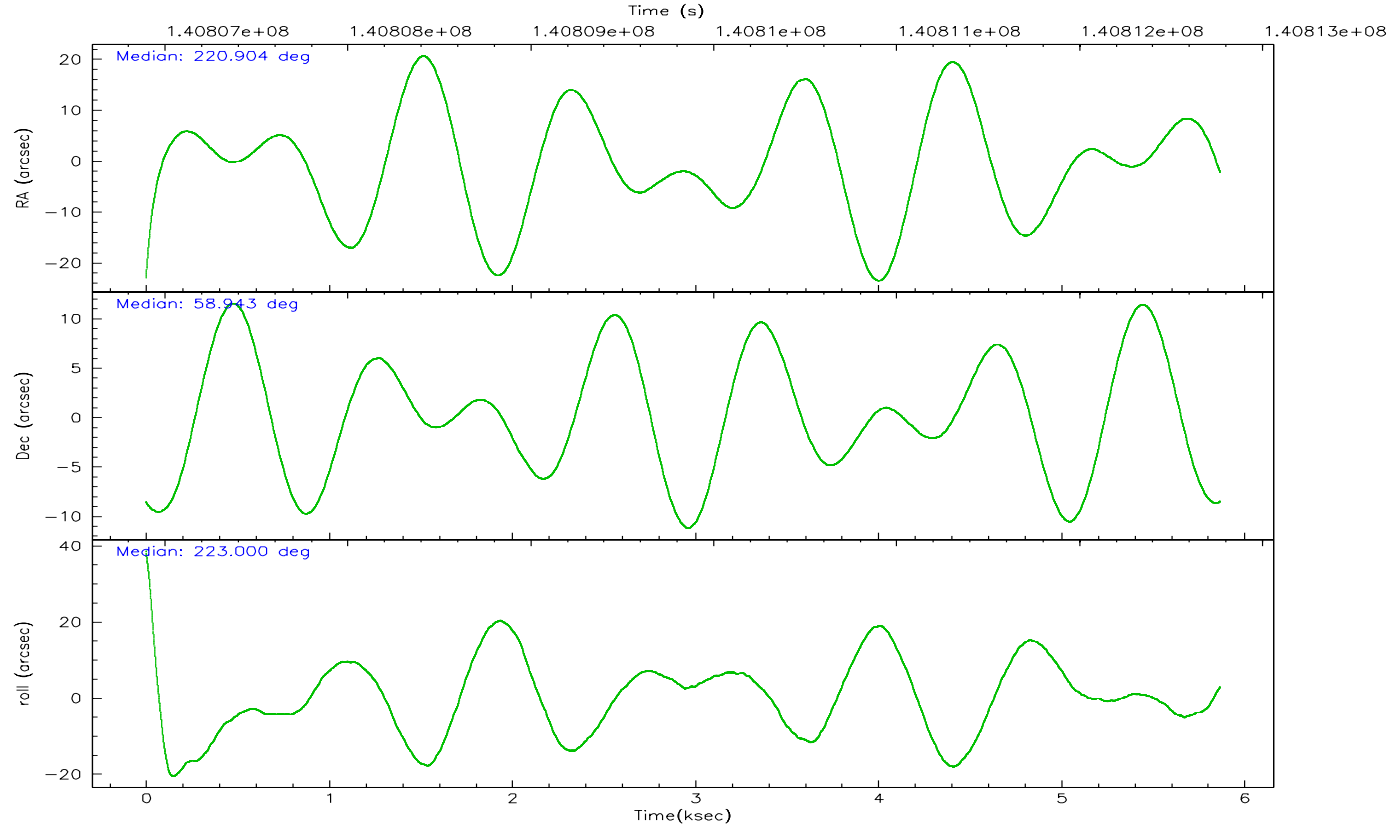
	ccd 2	ccd 3	ccd 5	ccd 6	ccd 7	ccd 8
grade 0 events	1806	1766	3603	2027	1295	3045
	4%	4%	6%	5%	2%	6%
grade 1 events	18	16	1243	19	34	26
	0%	0%	2%	0%	0%	0%
grade 2 events	983	843	7668	925	4630	2158
	2%	2%	13%	2%	9%	4%
grade 3 events	397	405	529	439	1024	1129
	1%	1%	0%	1%	2%	2%
grade 4 events	420	404	583	448	1053	1067
	1%	1%	1%	1%	2%	2%
grade 5 events	1356	1456	2593	1640	3336	2088
	3%	4%	4%	4%	6%	4%
grade 6 events	803	779	13412	847	11150	2676
	2%	2%	23%	2%	22%	5%
grade 7 events	32022	30175	27306	31837	27838	35899
	84%	84%	47%	83%	55%	74%

2.2 Compared Parameters

Parameter	Planned	Actual	Parameter	Planned	Actual
Instrument	ACIS	ACIS	Obspar format version number	6	6
Detector	ACIS-235678	ACIS-235678	Obspar file type	PREDICTED	ACTUAL
Grating	NONE	NONE	Obspar update status	NONE	UPDATED
Data mode	FAINT	FAINT	Number of optional ACIS chips dropped	0	0
Observation mode	POINTING	POINTING	On-chip summing requested	N	N
Pointing RA	220.919021	220.9043515024509	Subarray requested	NONE	NONE
Pointing Dec	58.968956	58.94277037029586	Alternating exposures requested	N	N
Pointing Roll	222.840262	223.0095521314389	Primary exposure time	0.000000	3.2
SIM focus pos (mm)	-0.684267	-0.6828225247311905			
SIM defocus (mm)	0	0.001444936568705701			
SIM translation stage pos (mm)	-190.132523	-190.1425803651734			
SIM translation stage offset (mm)	0	0.01005778216563158			
Observation start time	140807062.184000	140805997.60292			
Observation start date	2002-06-18T17:03:18	2002-06-18T16:46:37			
Observation end time	140812762.184000	140813303.29072			
Observation end date	2002-06-18T18:38:18	2002-06-18T18:48:23			
Read mode	TIMED	TIMED			

2.3 Aspect



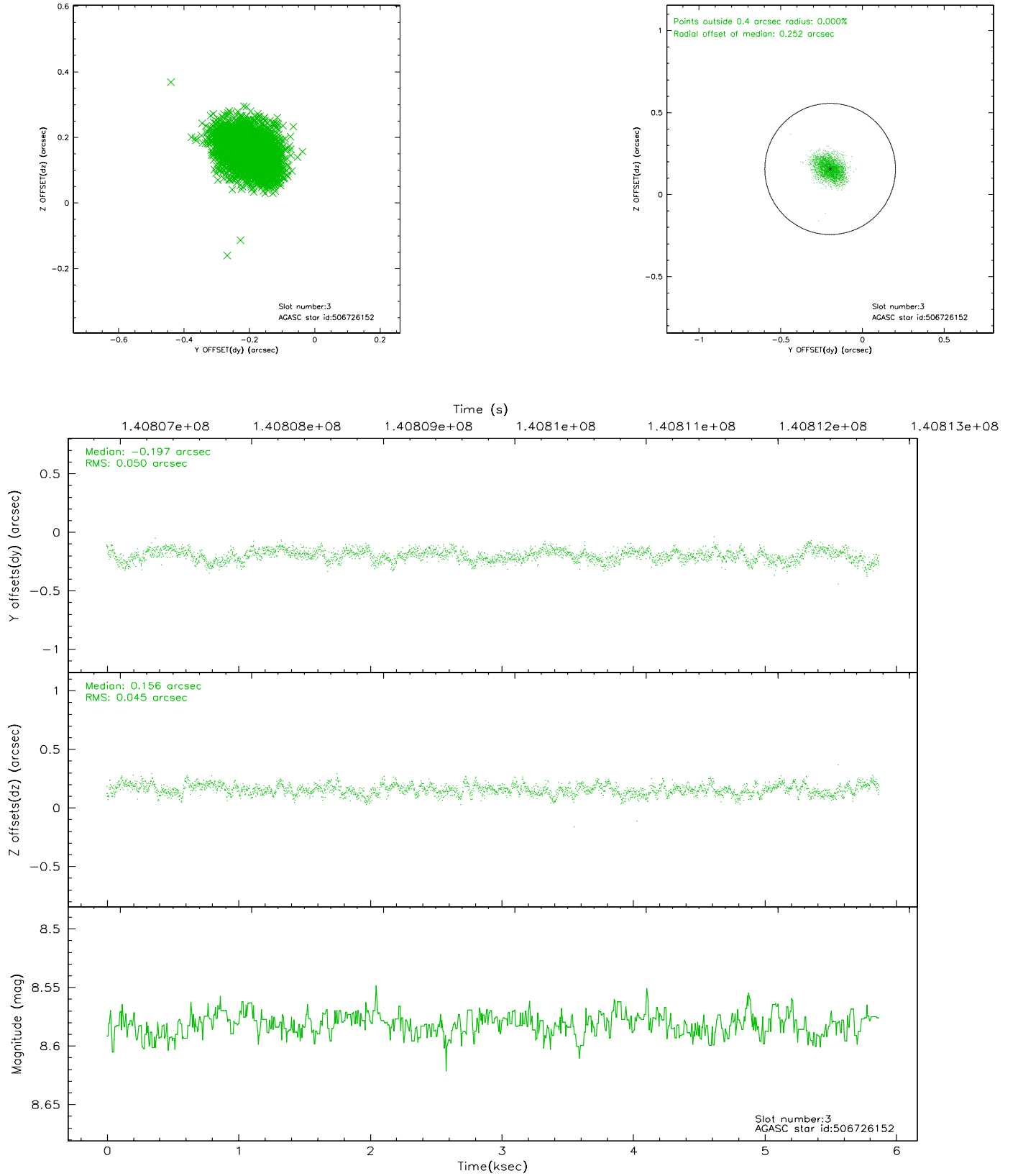


Slot Statistics

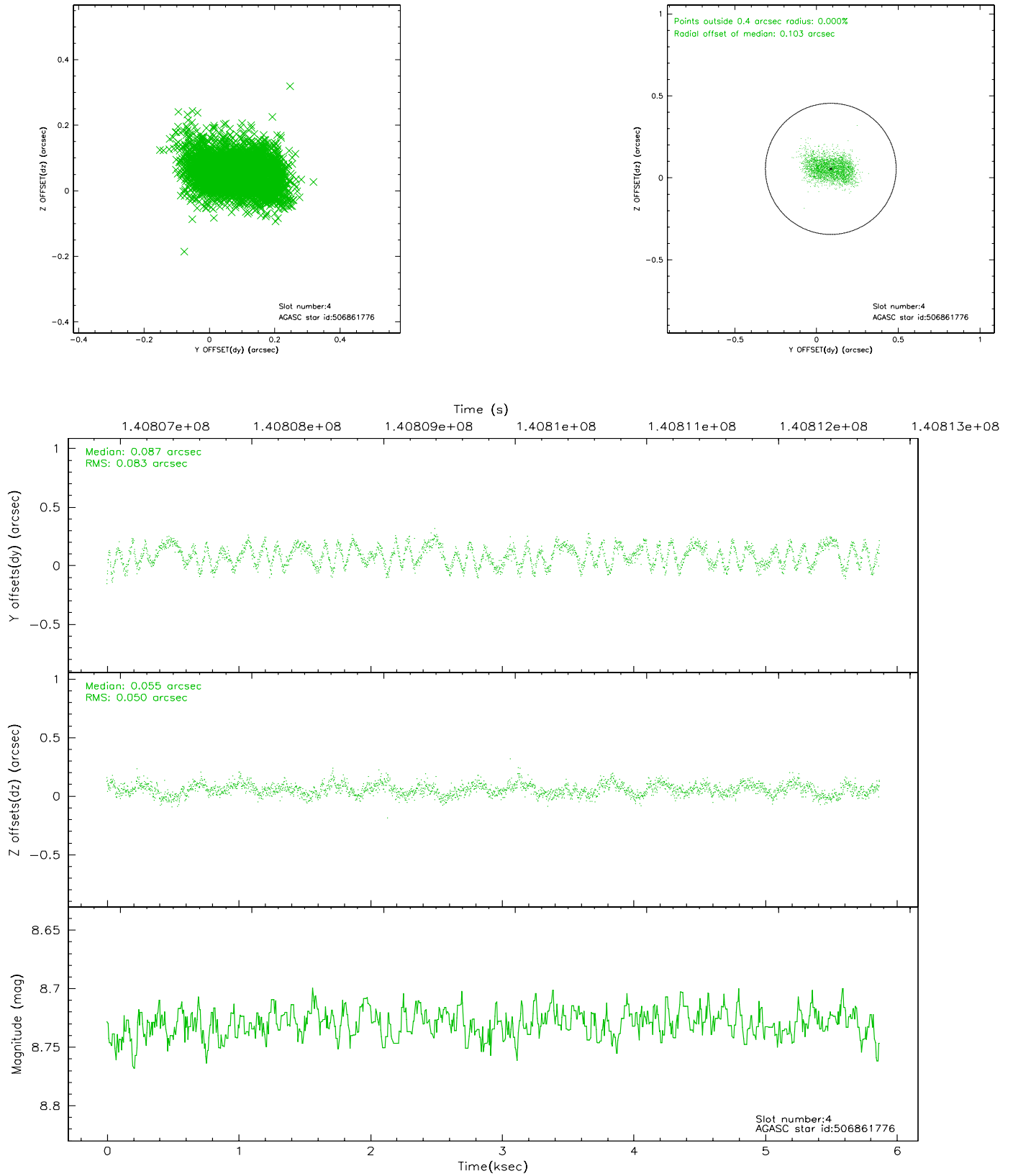
slot	status	id	mag	n_pts	med_dy	med_dz	dr1	dr2	ra	dec	mean_y	mean_z
0	FID	ACIS-S-2	7.12	1431	-0.022	0.036	0.008	0.012	0.000000	0.000000	-754.84	-1727.58
1	FID	ACIS-S-4	7.21	1431	-0.073	0.001	0.005	0.010	0.000000	0.000000	2157.90	179.86
2	FID	ACIS-S-5	7.24	1432	0.064	-0.029	0.007	0.010	0.000000	0.000000	-1806.32	174.61
3	GUIDE	506726152	8.58	2863	-0.197	0.156	0.072	0.114	220.029169	58.679632	1921.44	-375.73
4	GUIDE	506861776	8.73	2864	0.087	0.055	0.107	0.161	222.438135	58.830368	-1757.77	2266.99
5	GUIDE	506727144	9.37	2864	0.128	-0.190	0.079	0.131	221.102668	58.888866	-55.43	444.81
6	GUIDE	506727056	9.76	2861	-0.078	0.038	0.151	0.233	221.459289	58.586221	190.28	1697.65
7	GUIDE	506729168	9.59	2856	0.070	-0.056	0.110	0.181	220.527224	58.850252	824.16	-182.80

2.4 Star Slots

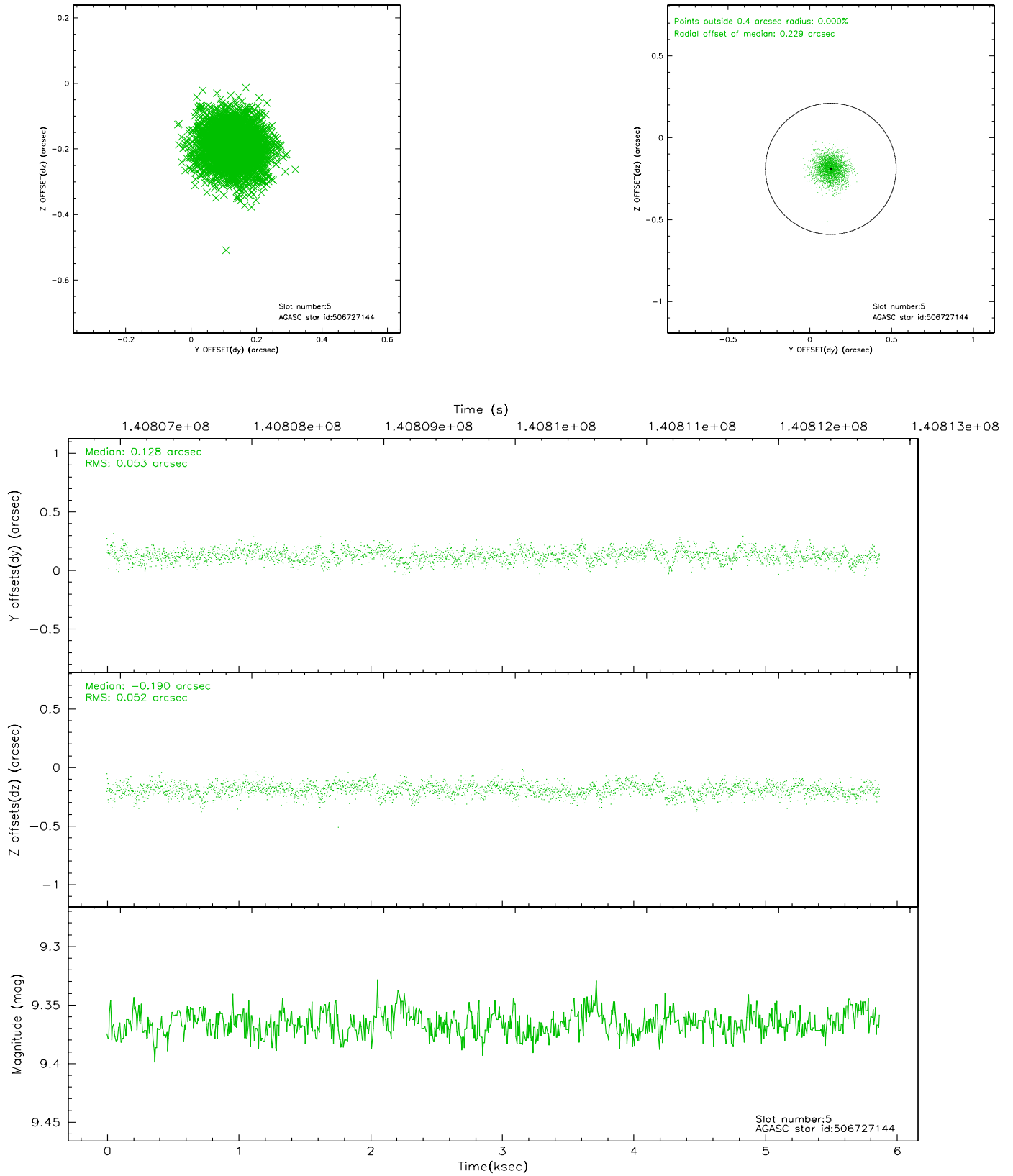
2.4.1 Slot 3



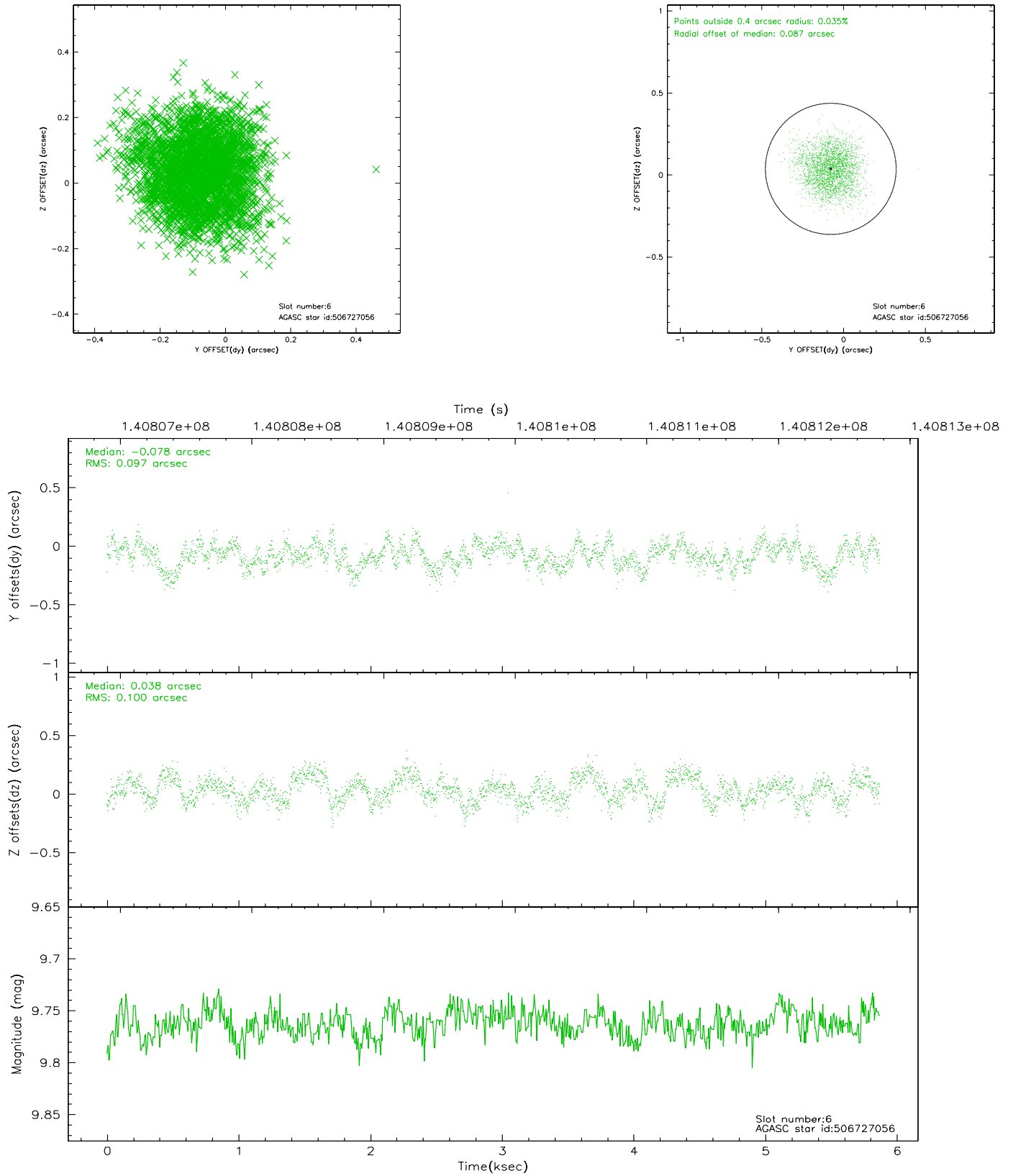
2.4.2 Slot 4



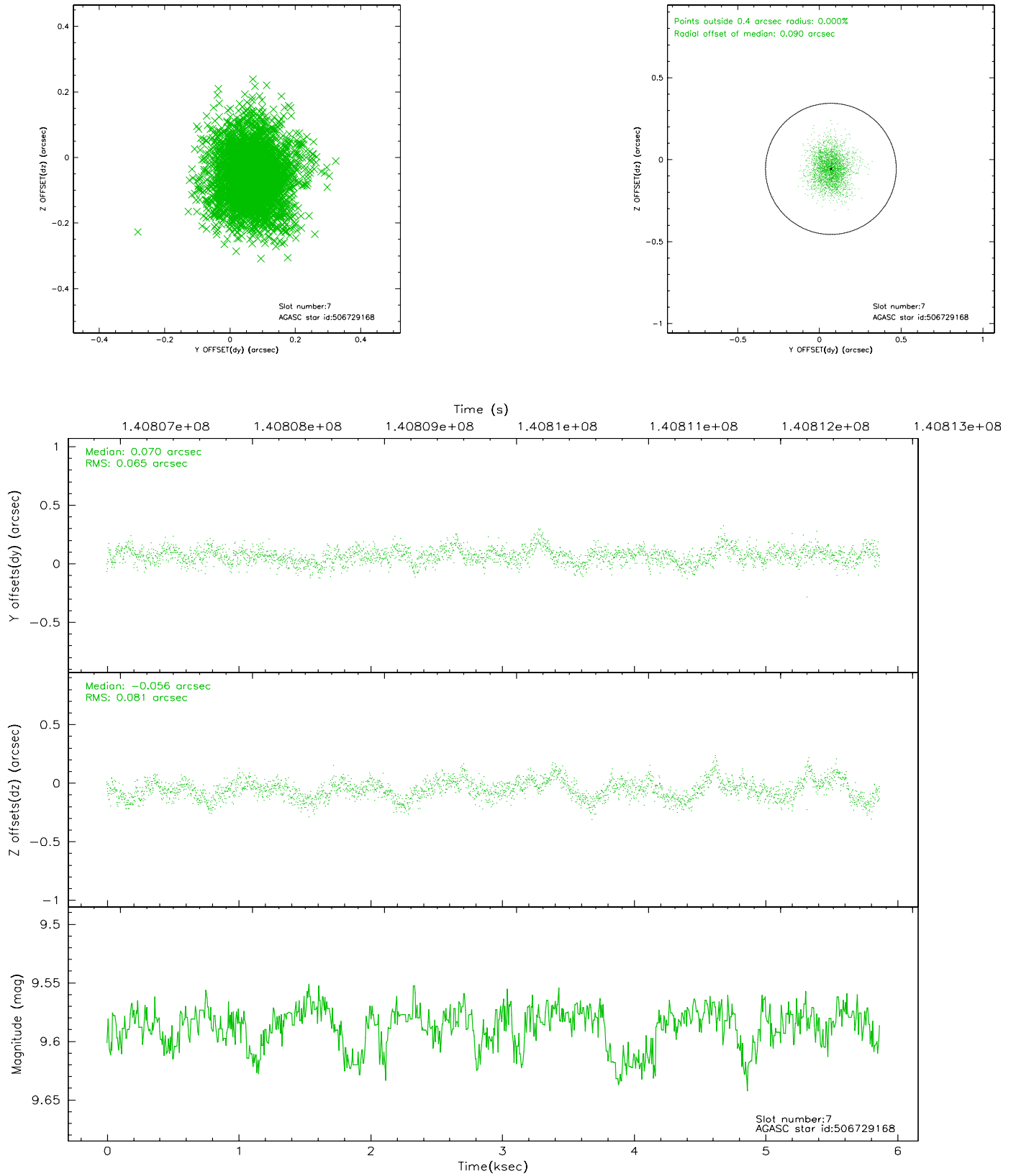
2.4.3 Slot 5



2.4.4 Slot 6

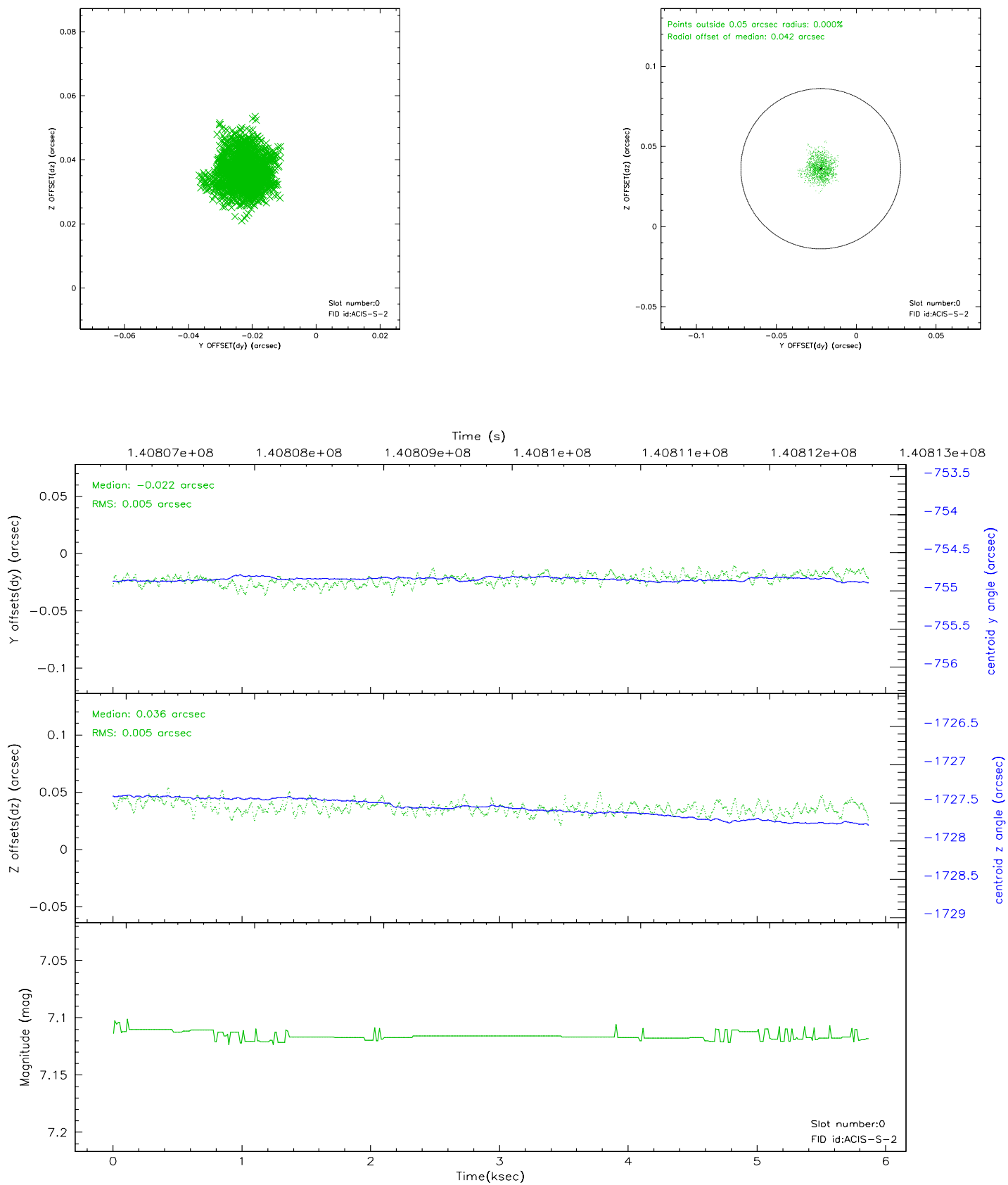


2.4.5 Slot 7

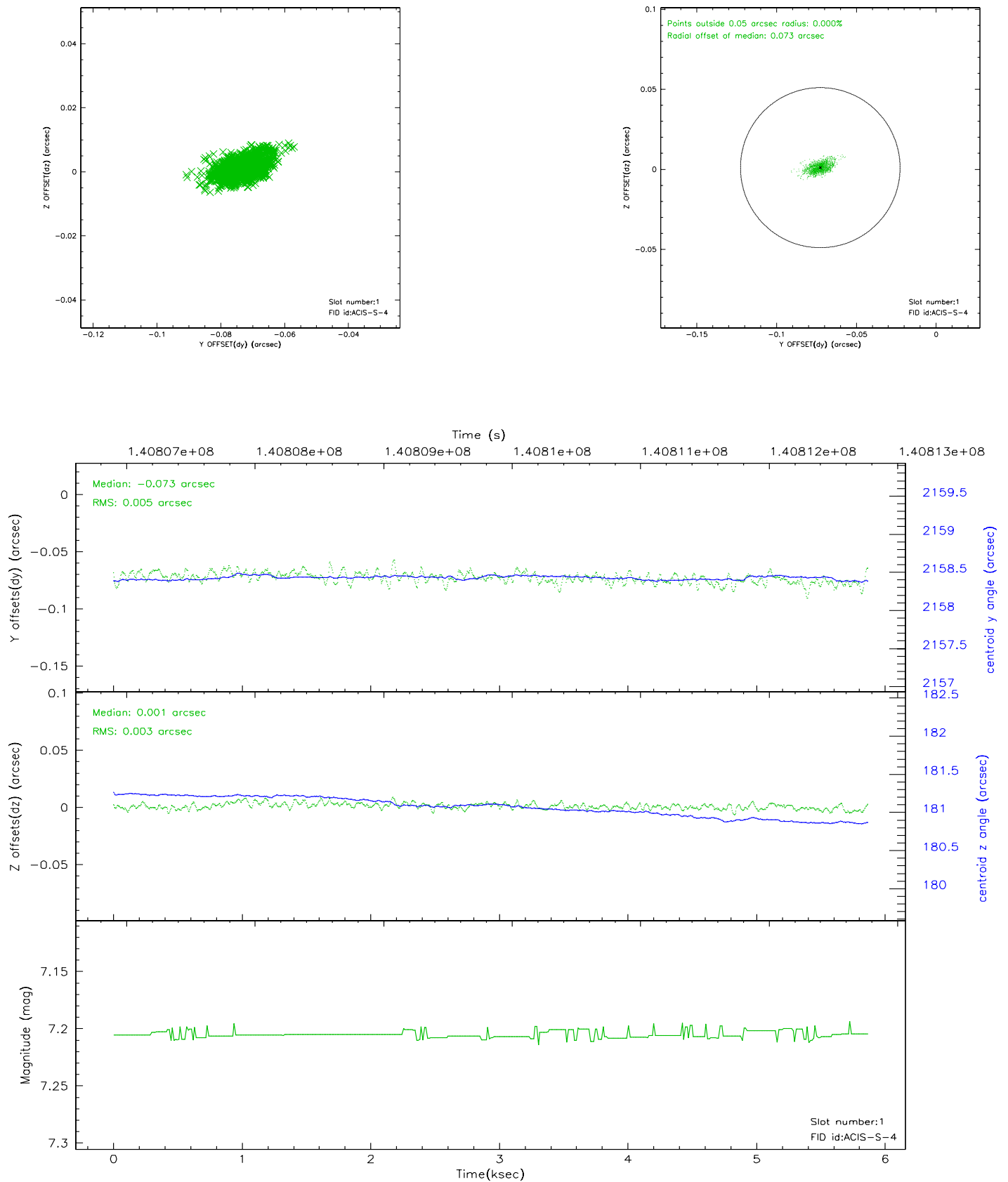


2.5 FID Slots

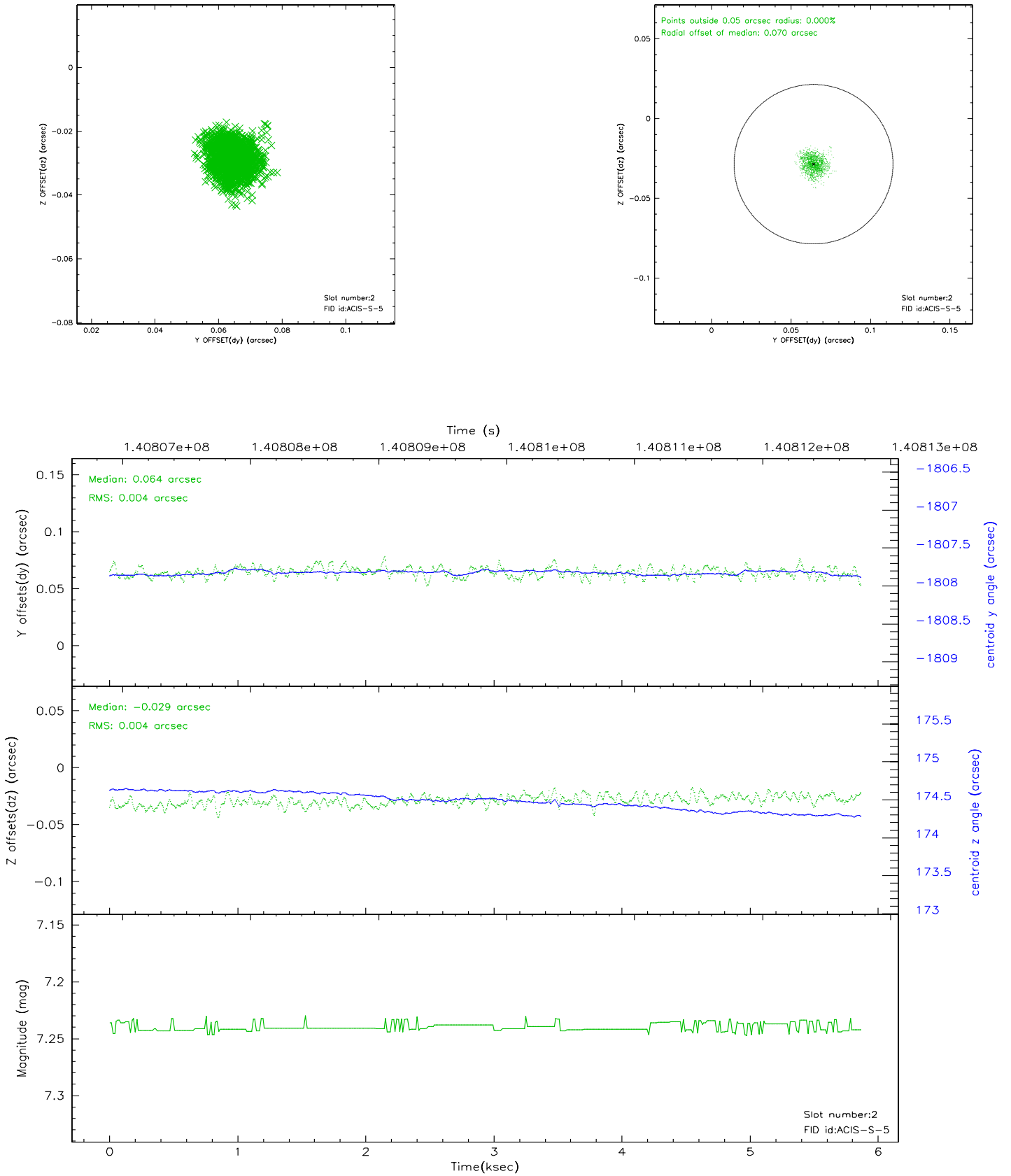
2.5.1 Slot 0



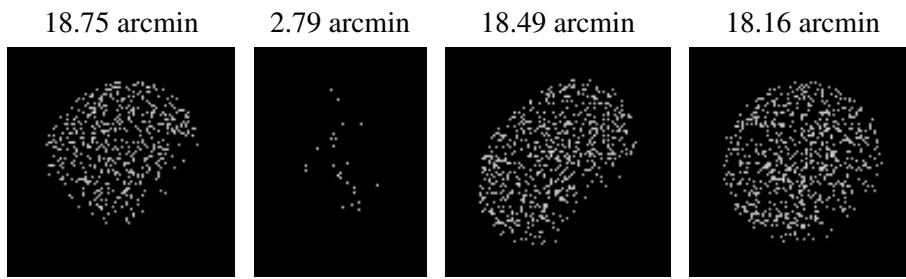
2.5.2 Slot 1



2.5.3 Slot 2



3 Point Sources



A Summary

A.1 Status

V&V Scientist	Jen Lauer
V&V Date (YYYY-MM-DD)	2006.09.19
V&V Edition	1
V&V Disposition and Status	OK
V&V Charge Time	5.865

A.2 Comments