

V&V Reference Report

L2 ASCDS Version : 8.4.5

Observation 3156 - L2 Version 4
Chandra X-Ray Center

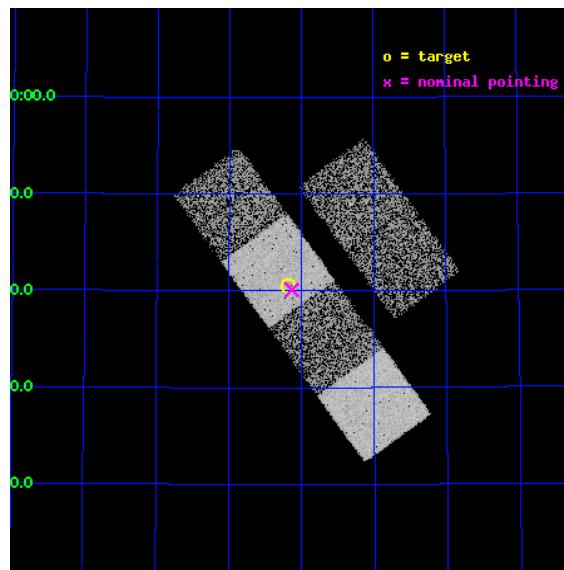
L2 Processing Date : Oct 5 2012

Contents

1	Front	2
2	OBI	3
2.1	OBI	3
2.1.1	Images	3
2.1.2	Bias	3
2.1.3	Parameters	4
2.1.4	Events	4
2.2	Compared Parameters	5
2.3	Aspect	6
2.4	Star Slots	9
2.4.1	Slot 3	9
2.4.2	Slot 4	10
2.4.3	Slot 5	11
2.4.4	Slot 6	12
2.4.5	Slot 7	13
2.5	FID Slots	14
2.5.1	Slot 0	14
2.5.2	Slot 1	15
2.5.3	Slot 2	16
A	Summary	17
A.1	Status	17
A.2	Comments	17

1 Front

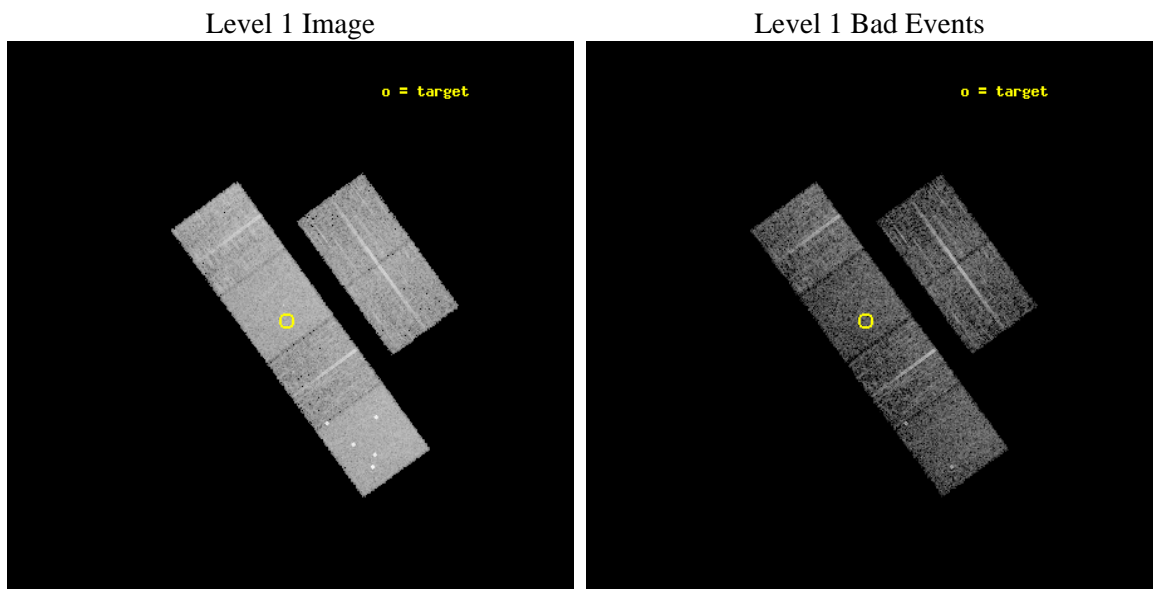
seq_num	700595	Sequence number
obs_id	3156	Observation id
title	A CHANDRA SURVEY OF THE MOST LUMINOUS QUASARS AT $Z > 4$	Proposal ti
observer	Professor Gordon Garmire	Principal investigator
object	PSS0955+5940	Source name
dtcycle	0	
cycle	P	events from which exps? Prim/Second/Both
ra_targ	148.797083	Observer's specified target RA [deg]
dec_targ	59.675556	Observer's specified target Dec [deg]
ra_nom	148.78323179444	Nominal RA [deg]
dec_nom	59.668761901747	Nominal Dec [deg]
roll_nom	233.92121257091	Nominal Roll [deg]
revision	4	Processing version of data
ontime	5753.5999785662	Sum of GTIs [s]
livetime	5680.7444312356	Livetime [s]
ontime2	5753.5999785662	Sum of GTIs [s]
ontime3	5753.5999785662	Sum of GTIs [s]
ontime5	5753.5999785662	Sum of GTIs [s]
ontime6	5753.5999785662	Sum of GTIs [s]
ontime7	5753.5999785662	Sum of GTIs [s]
ontime8	5750.359018296	Sum of GTIs [s]
l2events	56901	Number of level 2 events



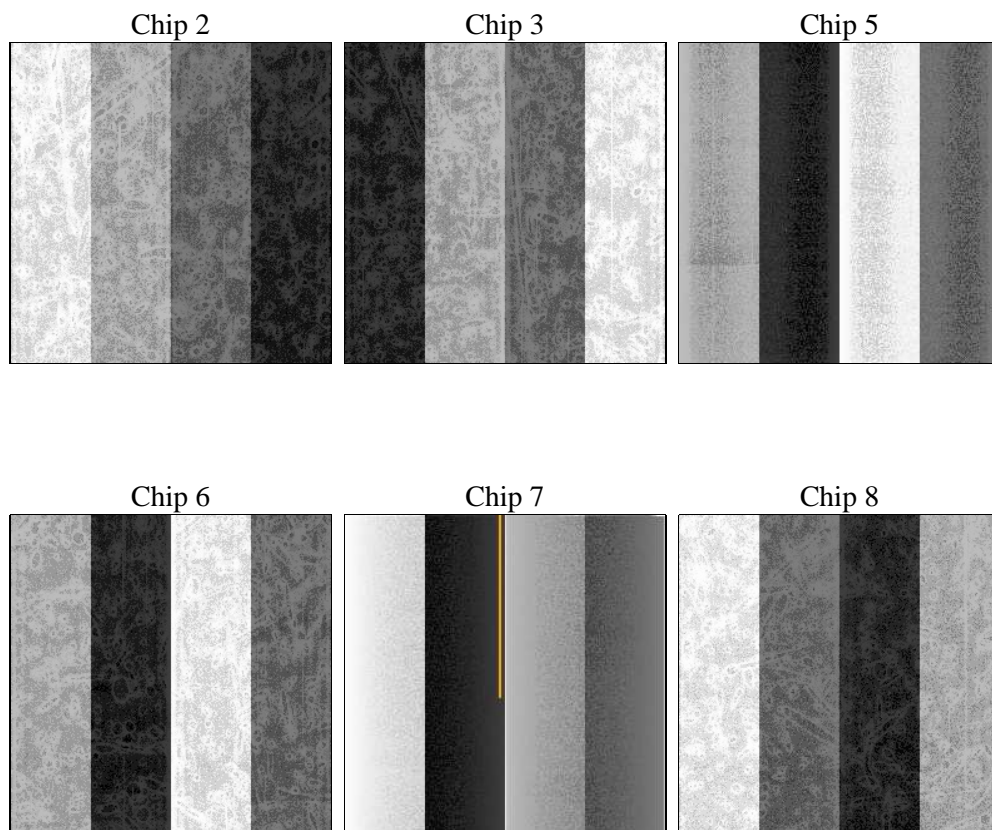
2 OBI

2.1 OBI

2.1.1 Images



2.1.2 Bias



2.1.3 Parameters

obi_num	2	Obi number	sched_exp_time	6000.000000	[s] Scheduled observation exposure time
ascdsver	8.4.5	Processing system revision	ontime	5753.5999785662	Sum of GTIs [s]
caldbver	4.5.2	 	ontime2	5753.5999785662	Sum of GTIs [s]
date	2012-10-05T14:24:31	Date and time of file creation	ontime3	5753.5999785662	Sum of GTIs [s]
revision	4	Processing version of data	ontime5	5753.5999785662	Sum of GTIs [s]
			ontime6	5753.5999785662	Sum of GTIs [s]
			ontime7	5753.5999785662	Sum of GTIs [s]
			ontime8	5750.359018296	Sum of GTIs [s]
			l1events	261634	Number of level 1 events

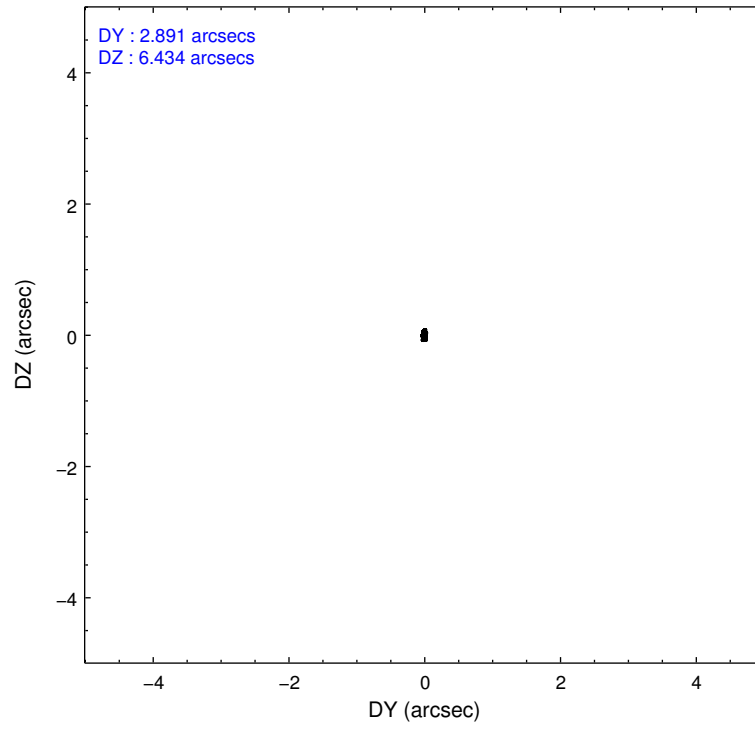
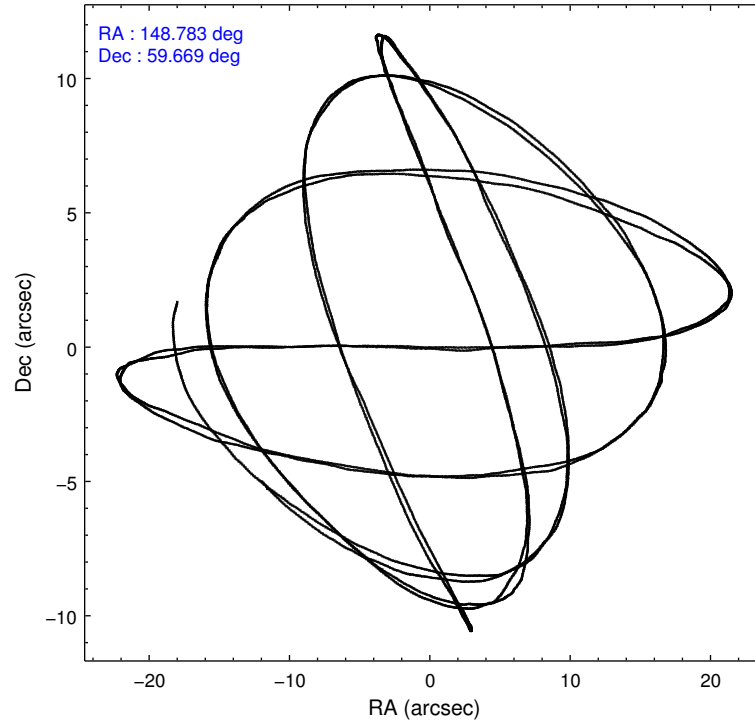
2.1.4 Events

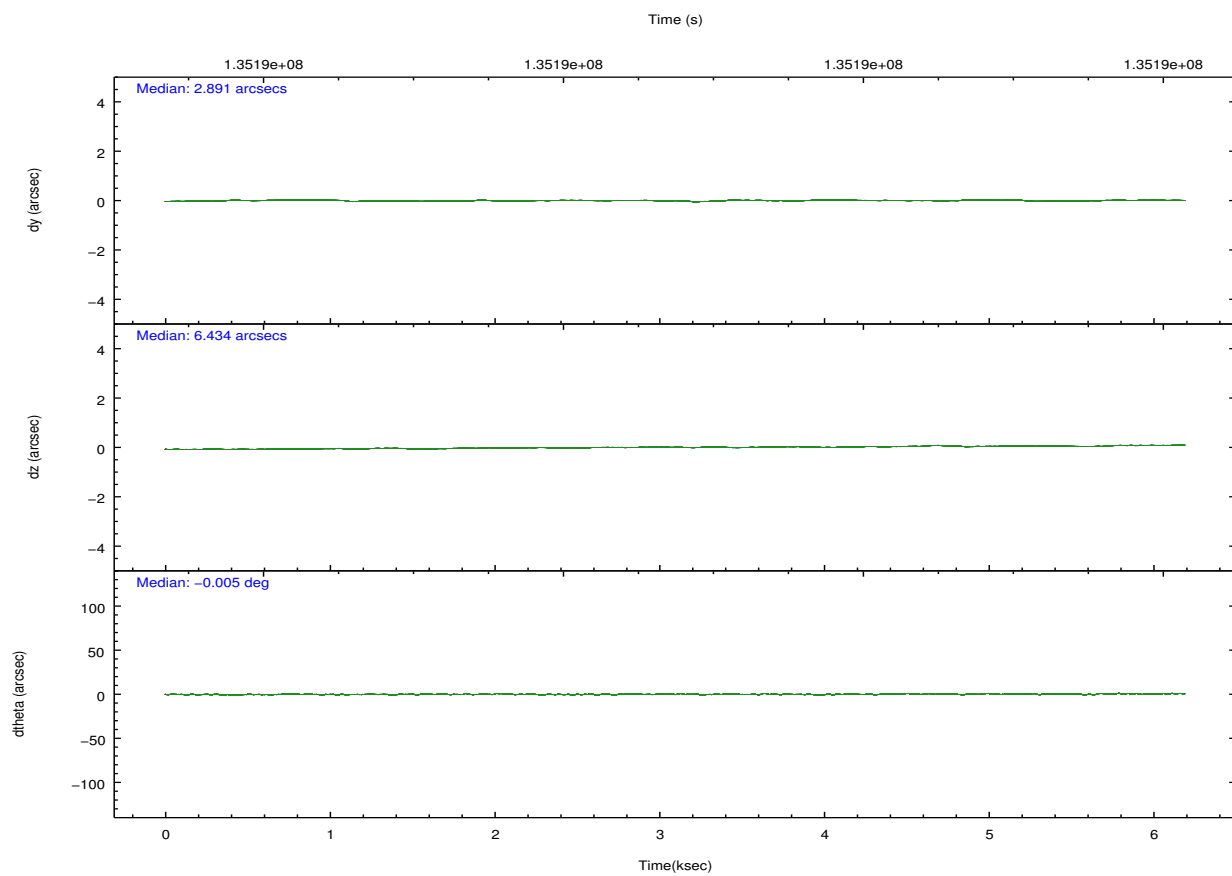
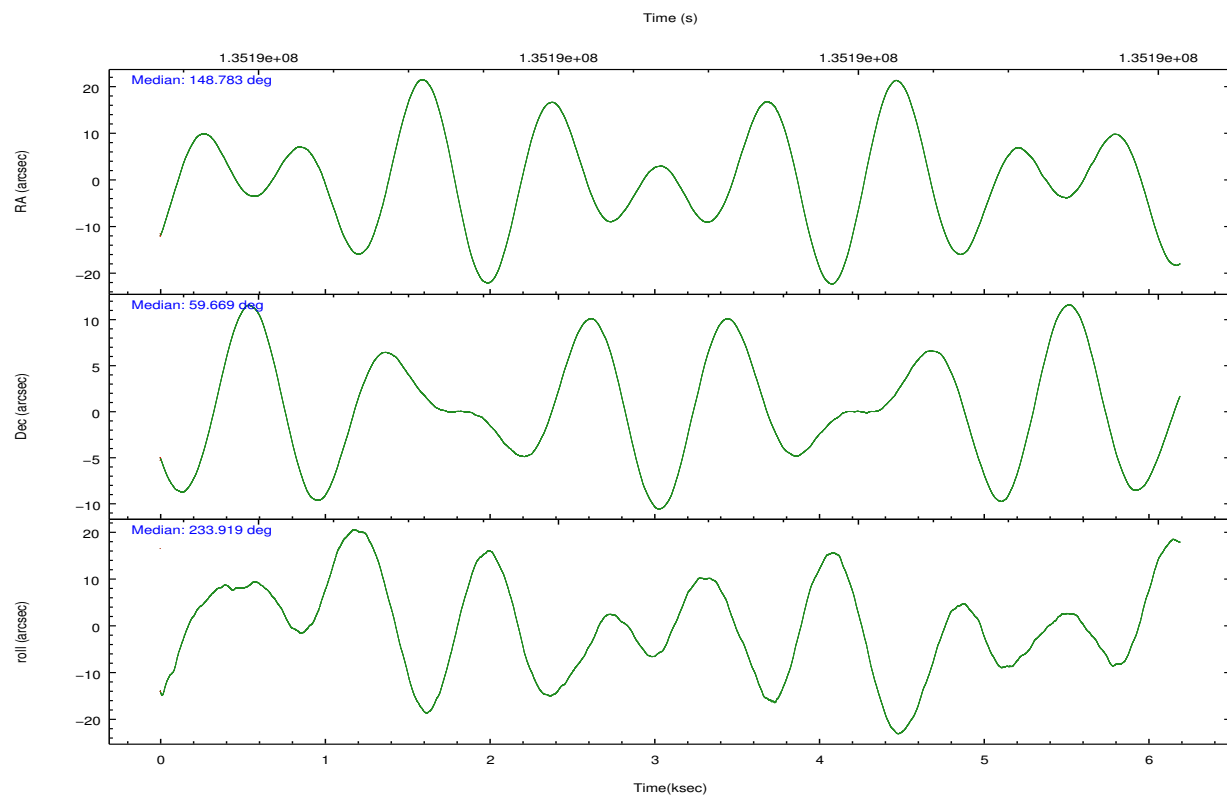
	ccd 2	ccd 3	ccd 5	ccd 6	ccd 7	ccd 8		ccd 2	ccd 3	ccd 5	ccd 6	ccd 7	ccd 8
level 1 events	36242	35740	56481	36282	47873	49016	grade 0 events	1801	1752	5189	1798	1857	2890
rejected events	32004	31573	28996	31949	28108	39891		4%	4%	9%	4%	3%	5%
rejected %	88%	88%	51%	88%	58%	81%	grade 1 events	18	14	357	14	44	23
								0%	0%	0%	0%	0%	0%
							grade 2 events	854	891	7524	880	3870	1958
								2%	2%	13%	2%	8%	3%
							grade 3 events	408	380	1028	426	1741	951
								1%	1%	1%	1%	3%	1%
							grade 4 events	418	404	954	400	1671	907
								1%	1%	1%	1%	3%	1%
							grade 5 events	1330	1506	3994	1630	4535	1995
								3%	4%	7%	4%	9%	4%
							grade 6 events	762	745	12820	831	10654	2432
								2%	2%	22%	2%	22%	4%
							grade 7 events	30651	30048	24615	30303	23501	37860
								84%	84%	43%	83%	49%	77%

2.2 Compared Parameters

Parameter	Planned	Actual	Parameter	Planned	Actual
Instrument	ACIS	ACIS	Obspar format version number	7	7
Detector	ACIS-235678	ACIS-235678	Obspar file type	PREDICTED	ACTUAL
Grating	NONE	NONE	Obspar update status	NONE	UPDATED
Data mode	FAINT	FAINT	Number of optional ACIS chips dropped	0	0
Observation mode	POINTING	POINTING	On-chip summing requested	N	N
[deg] Pointing RA	148.788247	148.7832317944396	Subarray requested	NONE	NONE
[deg] Pointing Dec	59.695967	59.66876190174683	Alternating exposures requested	N	N
[deg] Pointing Roll	233.760282	233.9212125709112	[s] Primary exposure time	0.000000	3.2
[mm] SIM focus pos	-0.684267	-0.6828225247311905			
[mm] SIM defocus	0	0.001444936568705701			
[mm] SIM translation stage pos	-190.132523	-190.1425803651734			
[mm] SIM translation stage offset	0	0.01005778216563158			
[s] Observation start time (MET)	135185836.184000	135185460.09863			
Observation start date	2002-04-14T15:36:12	2002-04-14T15:31:00			
[s] Observation end time (MET)	135191836.184000	135192442.91141			
Observation end date	2002-04-14T17:16:12	2002-04-14T17:27:22			
Read mode	TIMED	TIMED			

2.3 Aspect



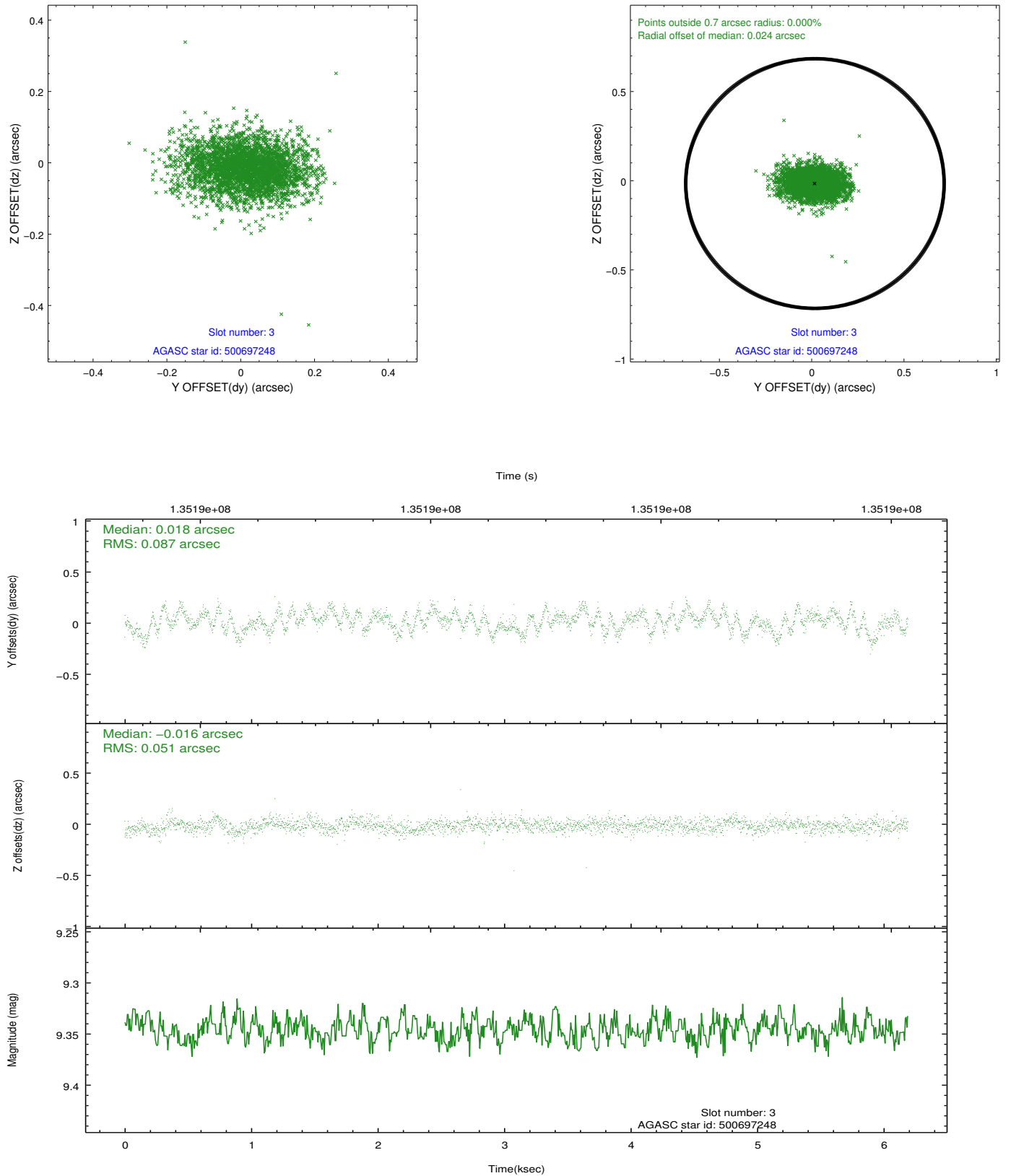


Slot Statistics

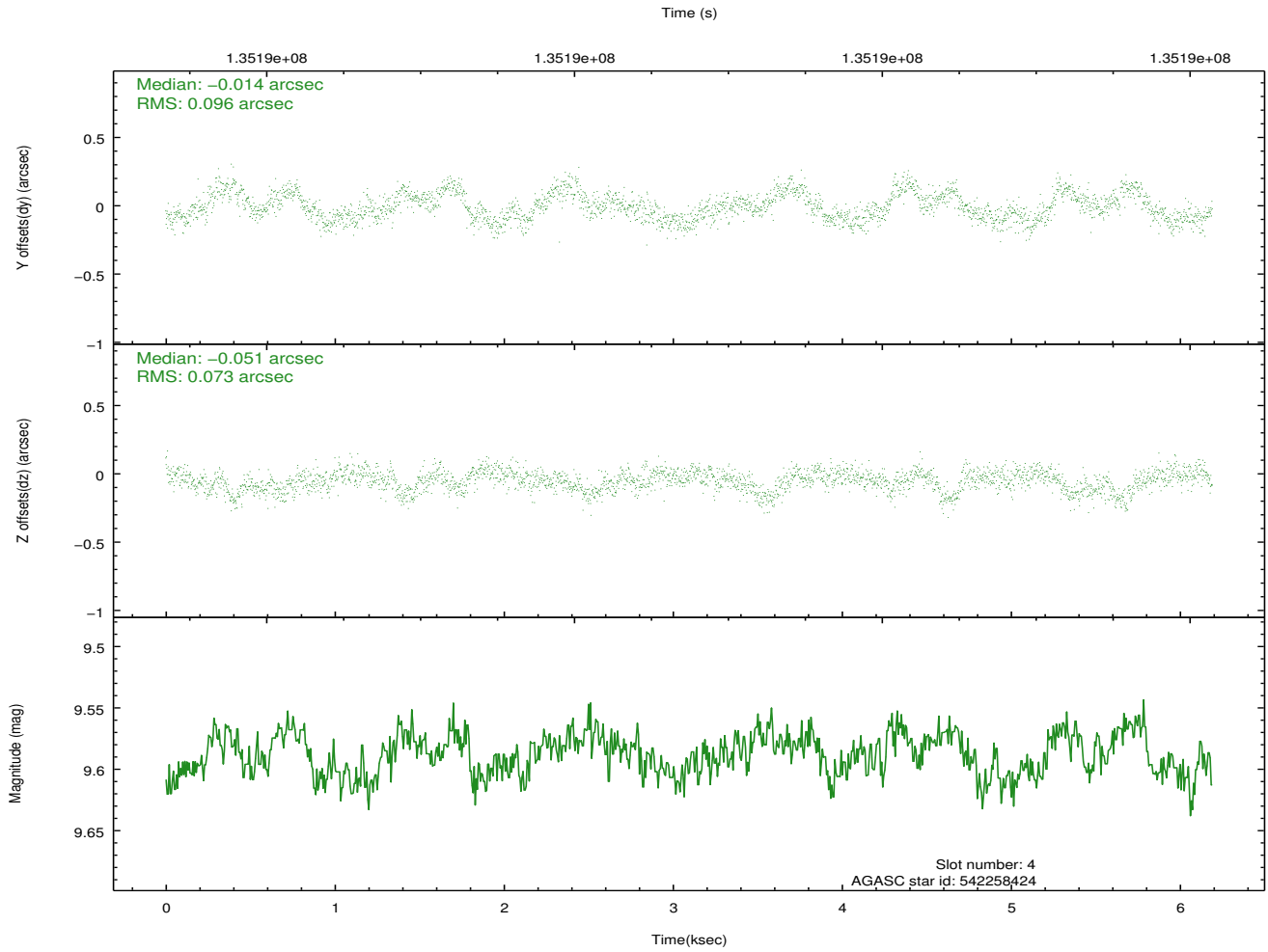
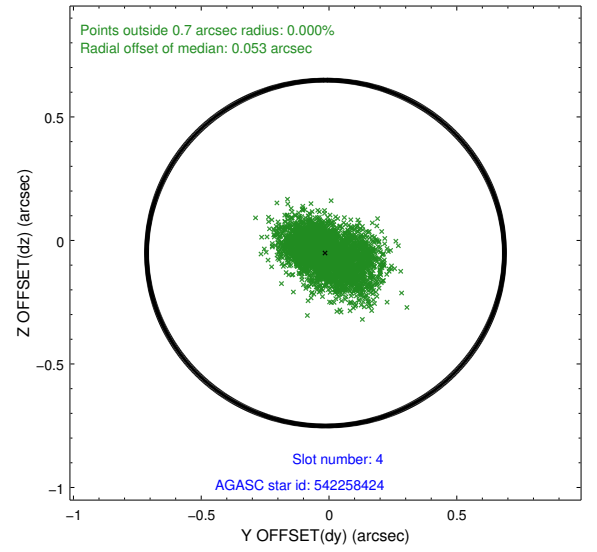
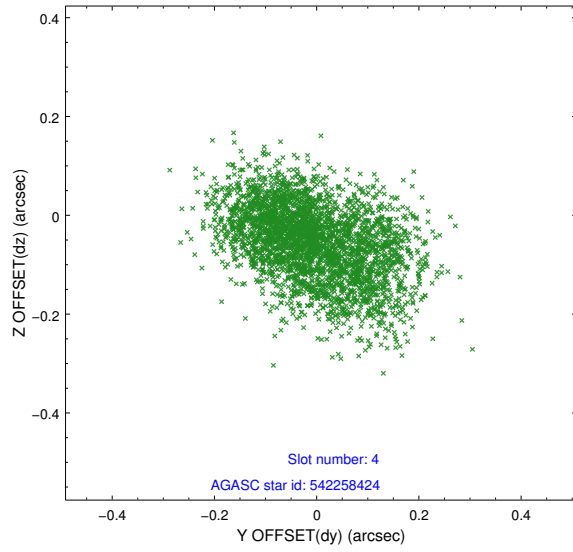
slot	status	id	mag	n_pts	med_dy	med_dz	dr1	dr2	ra	dec	mean_y	mean_z
0	FID	ACIS-S-2	7.11	1511	-0.027	0.013	0.007	0.011	0.000000	0.000000	-755.52	-1727.53
1	FID	ACIS-S-4	7.20	1511	-0.022	0.009	0.006	0.011	0.000000	0.000000	2157.30	180.02
2	FID	ACIS-S-5	7.24	1509	0.017	-0.014	0.006	0.010	0.000000	0.000000	-1807.12	174.68
3	GUIDE	500697248	9.35	3021	0.018	-0.016	0.104	0.182	150.205215	59.660702	-1442.80	2136.40
4	GUIDE	542258424	9.59	3020	-0.014	-0.051	0.130	0.210	149.739161	60.081559	-2139.17	549.48
5	GUIDE	500704856	7.90	3021	-0.064	0.007	0.084	0.135	149.095120	59.439271	411.61	998.38
6	GUIDE	542257792	9.91	3019	-0.075	0.078	0.204	0.319	149.079954	60.276436	-1993.93	-816.15
7	GUIDE	500706352	10.15	3014	0.137	-0.007	0.240	0.375	147.758279	59.361242	2076.83	-820.98

2.4 Star Slots

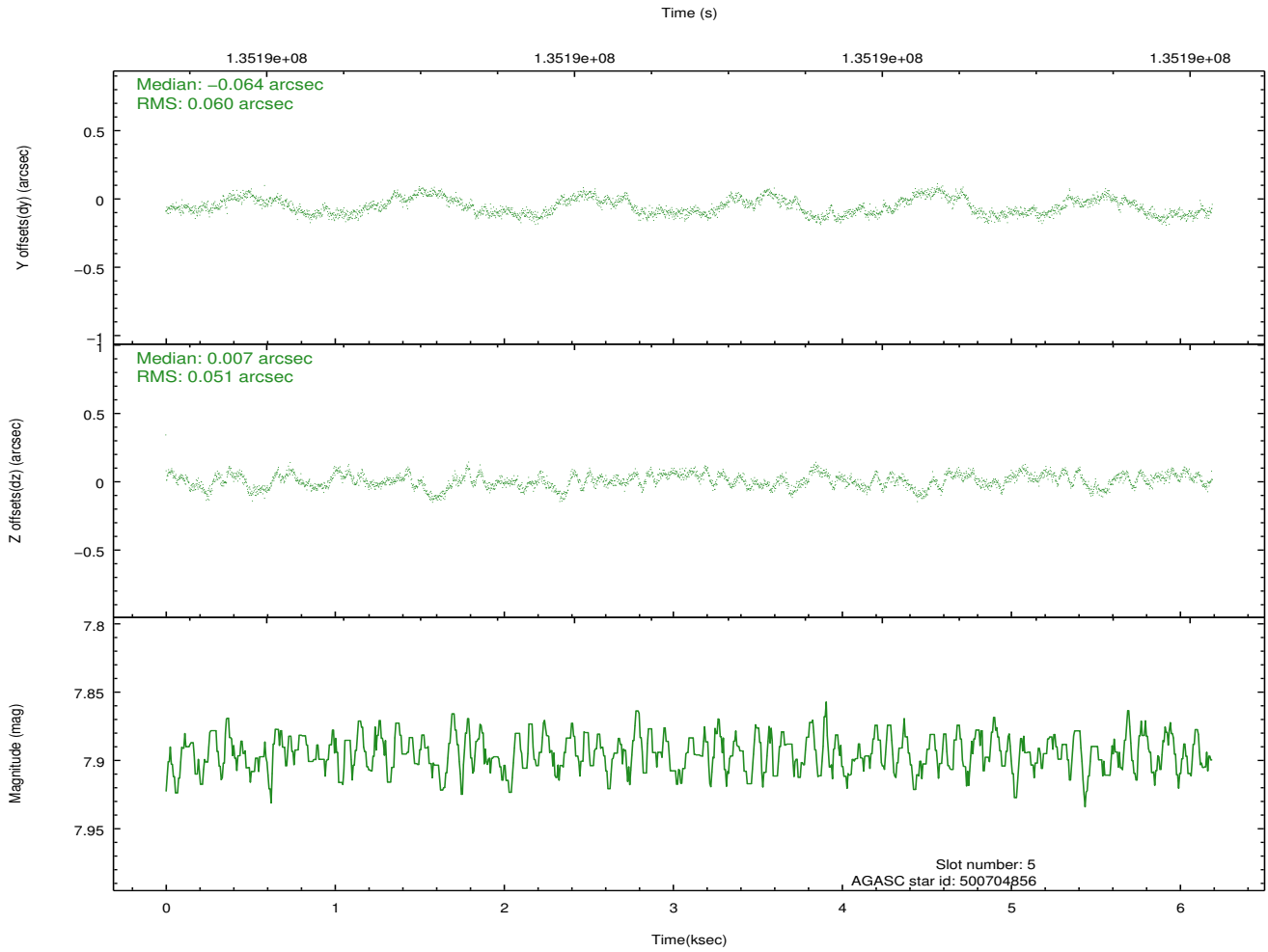
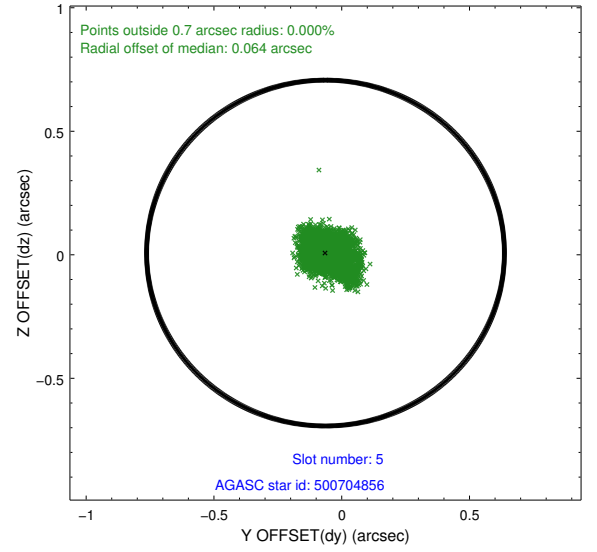
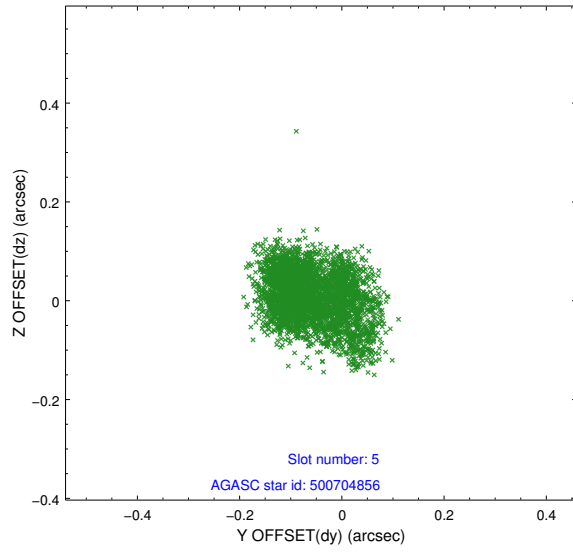
2.4.1 Slot 3



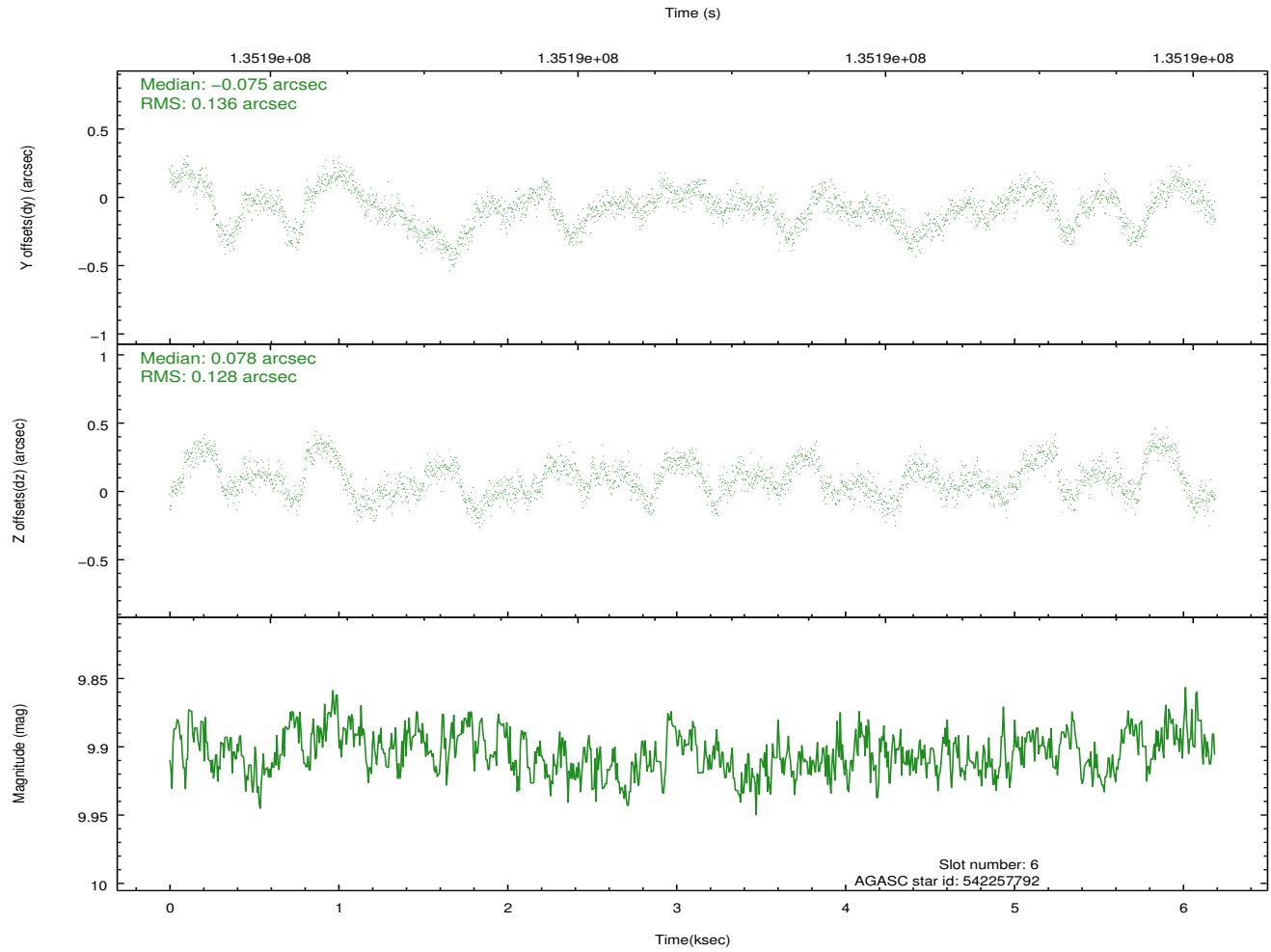
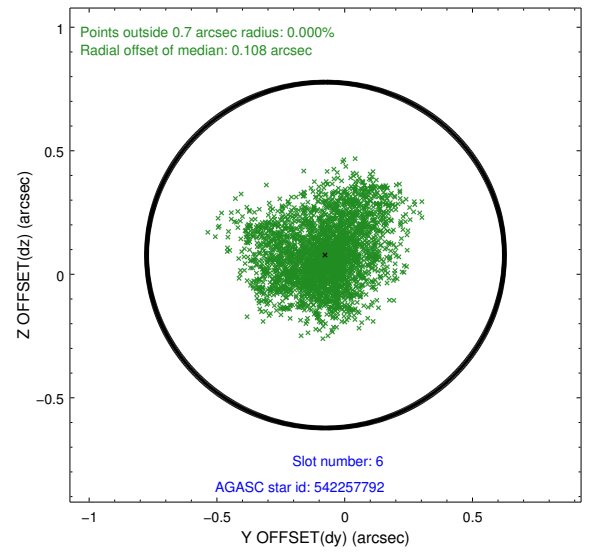
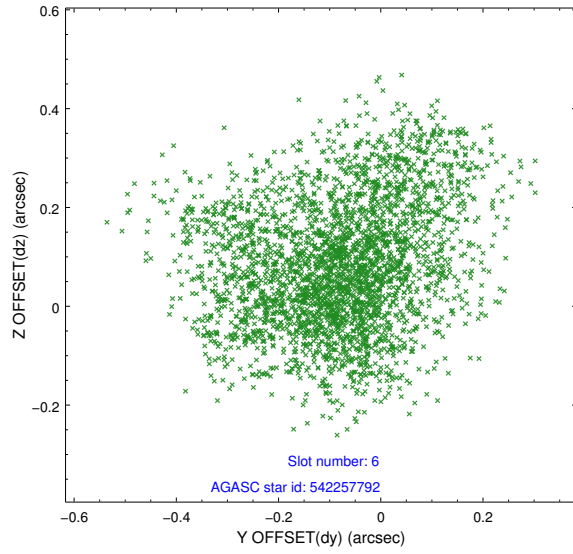
2.4.2 Slot 4



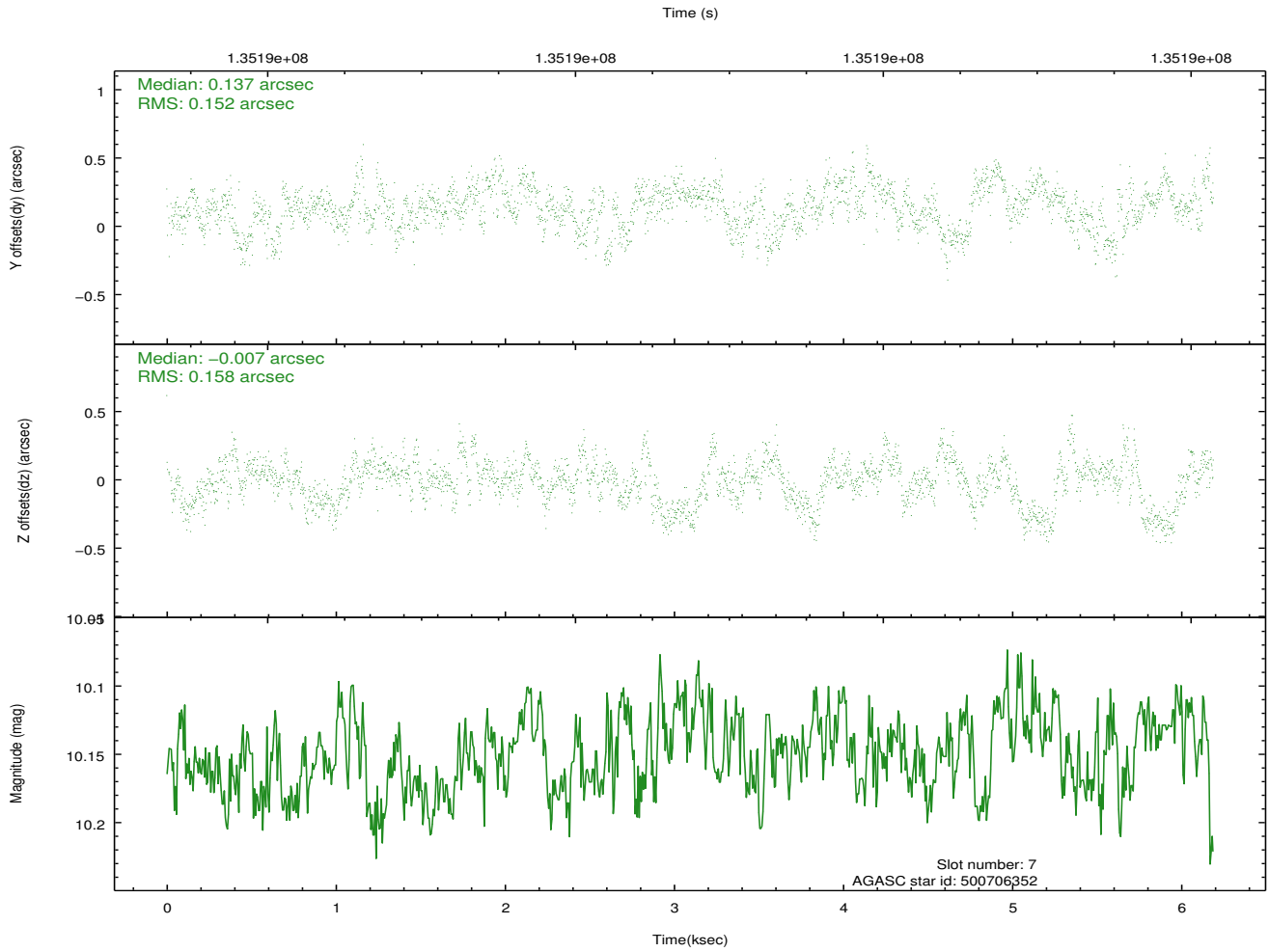
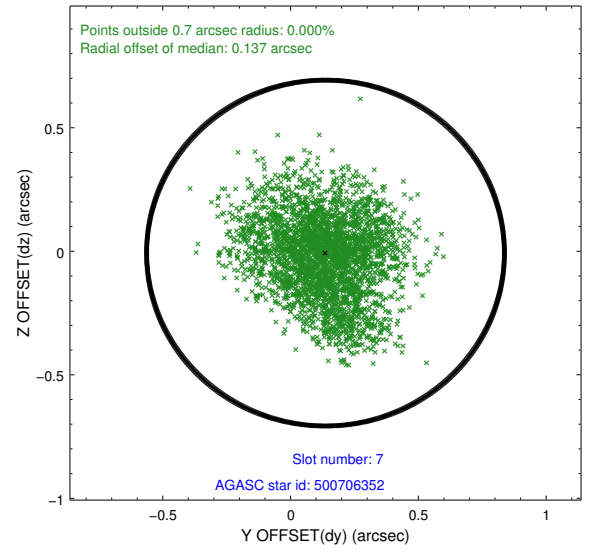
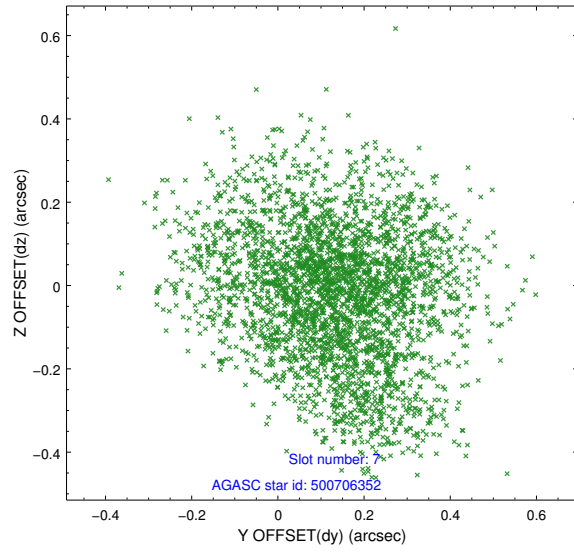
2.4.3 Slot 5



2.4.4 Slot 6

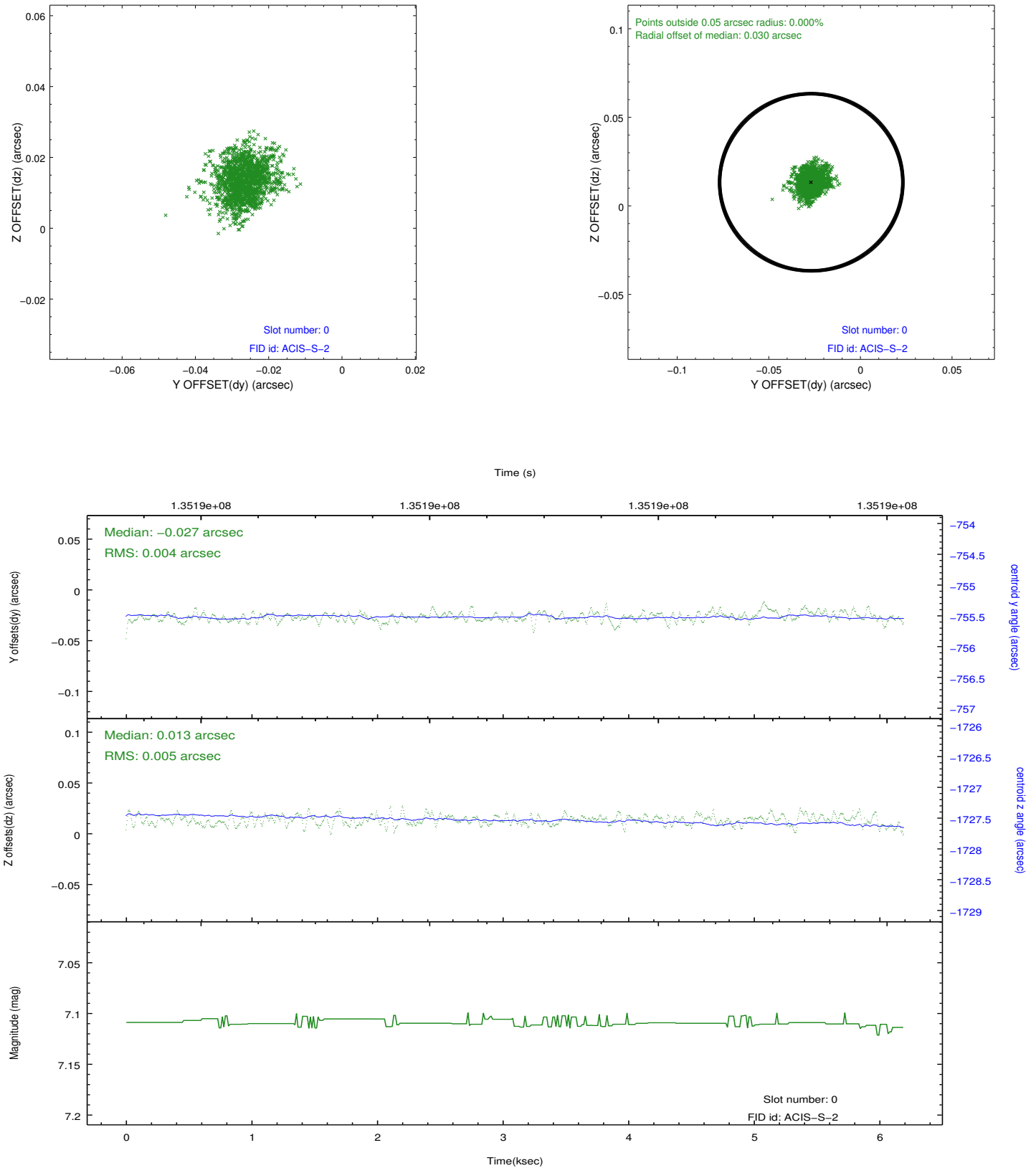


2.4.5 Slot 7

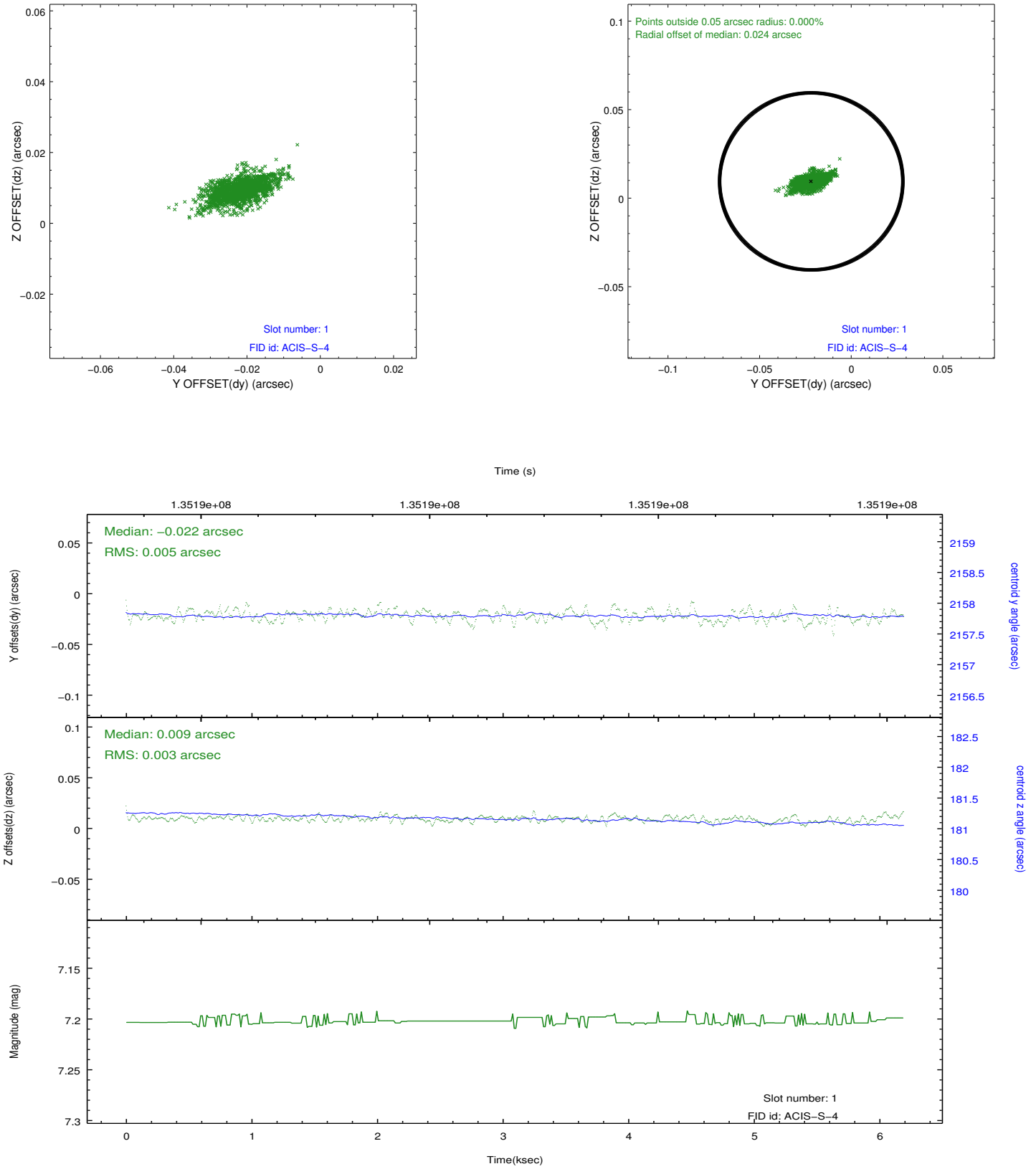


2.5 FID Slots

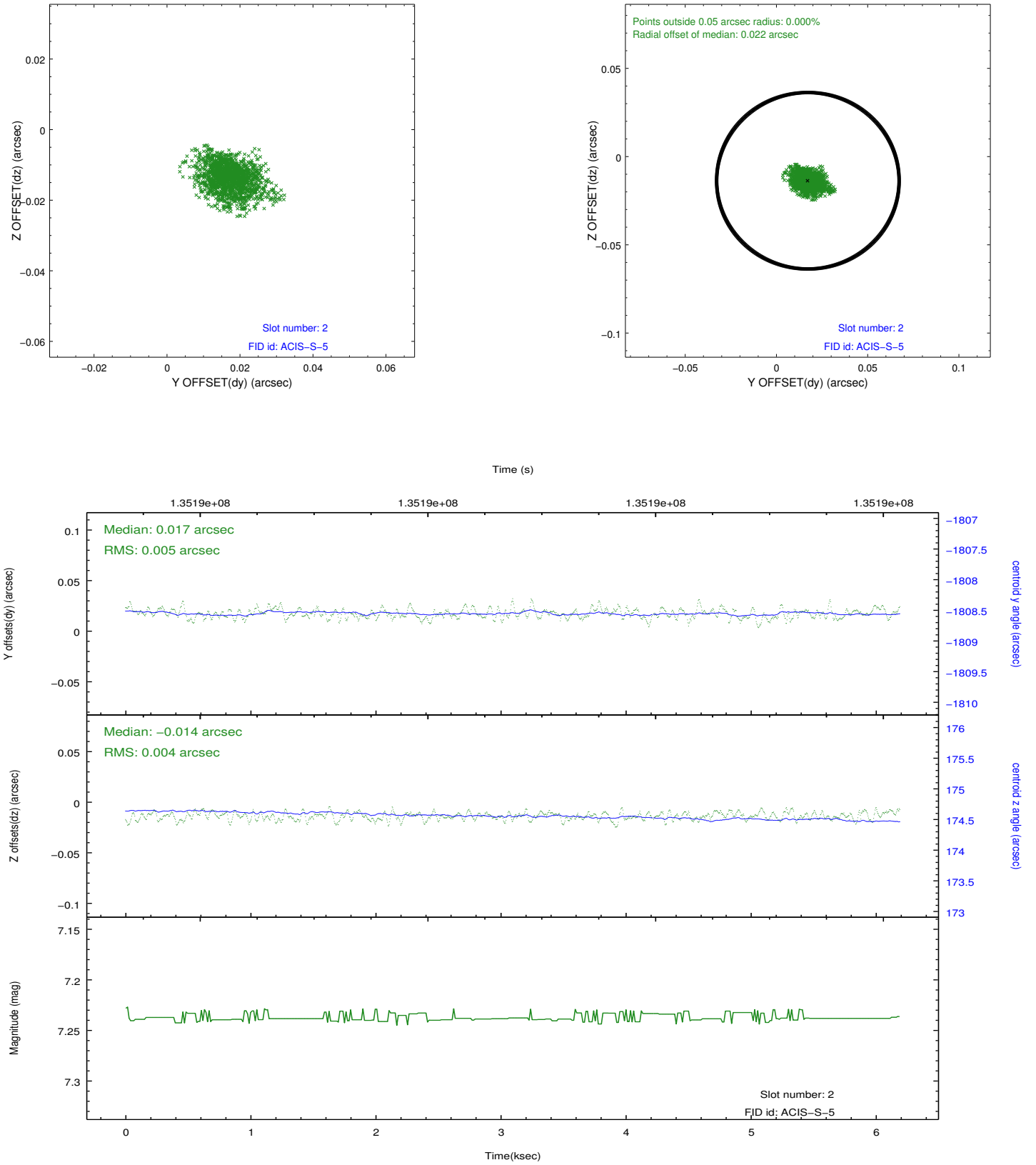
2.5.1 Slot 0



2.5.2 Slot 1



2.5.3 Slot 2



A Summary

A.1 Status

V&V Scientist	Beth Sundheim
V&V Date (YYYY-MM-DD)	2012.10.11
V&V Edition	1
V&V Disposition and Status	OK
V&V Charge Time	5.756

A.2 Comments