

# V&V Reference Report

## L2 ASCDS Version : 7.6.8.1

Observation 3155 - L2 Version 001  
Chandra X-Ray Center

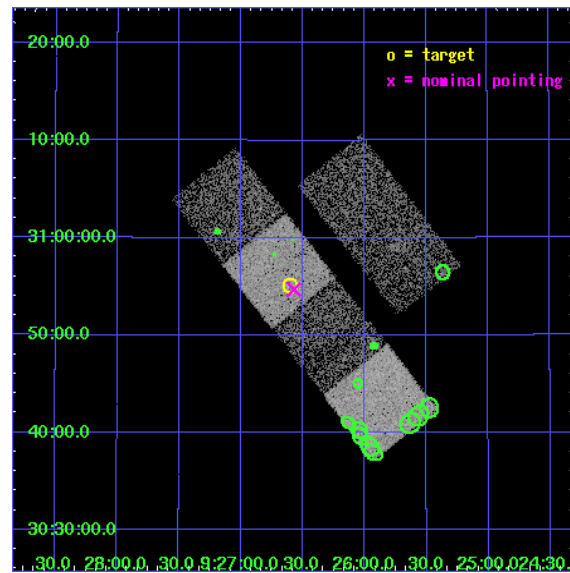
L2 Processing Date : Sep 6 2006

## Contents

<b>1</b>	<b>Front</b>	<b>2</b>
<b>2</b>	<b>OBI</b>	<b>3</b>
2.1	OBI . . . . .	3
2.1.1	Images . . . . .	3
2.1.2	Bias . . . . .	3
2.1.3	Parameters . . . . .	4
2.1.4	Events . . . . .	4
2.2	Compared Parameters . . . . .	5
2.3	Aspect . . . . .	6
2.4	Star Slots . . . . .	9
2.4.1	Slot 3 . . . . .	9
2.4.2	Slot 4 . . . . .	10
2.4.3	Slot 5 . . . . .	11
2.4.4	Slot 6 . . . . .	12
2.4.5	Slot 7 . . . . .	13
2.5	FID Slots . . . . .	14
2.5.1	Slot 0 . . . . .	14
2.5.2	Slot 1 . . . . .	15
2.5.3	Slot 2 . . . . .	16
<b>3</b>	<b>Point Sources</b>	<b>17</b>
<b>A</b>	<b>Summary</b>	<b>18</b>
A.1	Status . . . . .	18
A.2	Comments . . . . .	18

# 1 Front

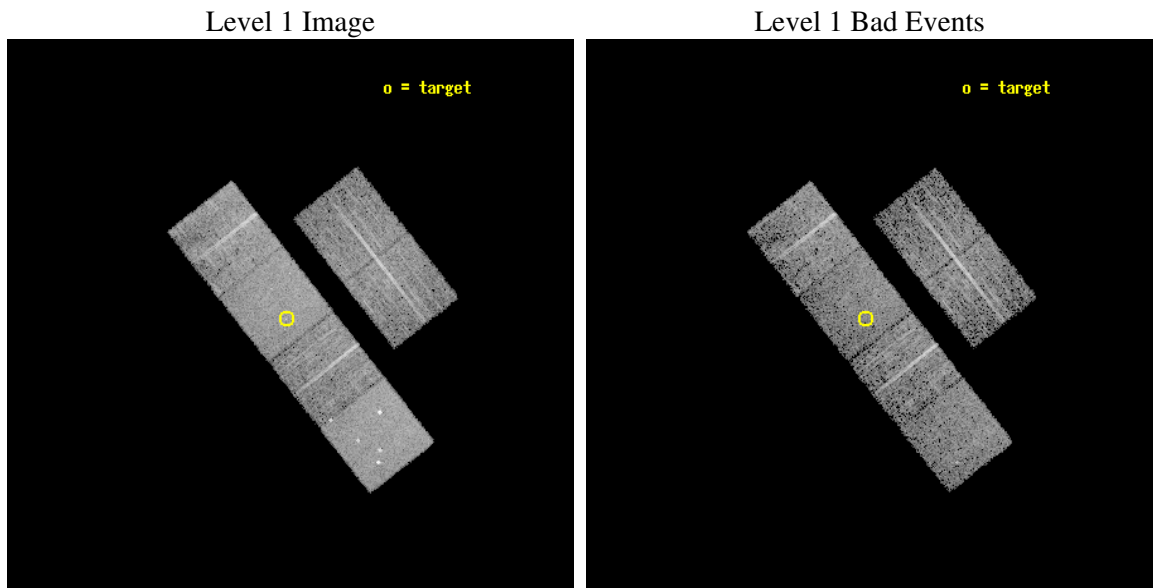
seq_num	700594
obs_id	3155
title	A CHANDRA SURVEY OF THE MOST LUMINOUS QUASARS AT $Z > 4$
observer	Professor Gordon Garmire
object	PSS0926+3055
dtcycle	0
cycle	P
ra_targ	141.65125
dec_targ	30.918333
ra_nom	141.64292681328
dec_nom	30.911934741096
roll_nom	231.80308082756
revision	2
ontime	5356.8000049889
livetime	5288.968977848
ontime2	5356.8000049889
ontime3	5356.8000049889
ontime5	5356.8000049889
ontime6	5356.8000049889
ontime7	5356.8000049889
ontime8	5356.8000049889
l2events	54057



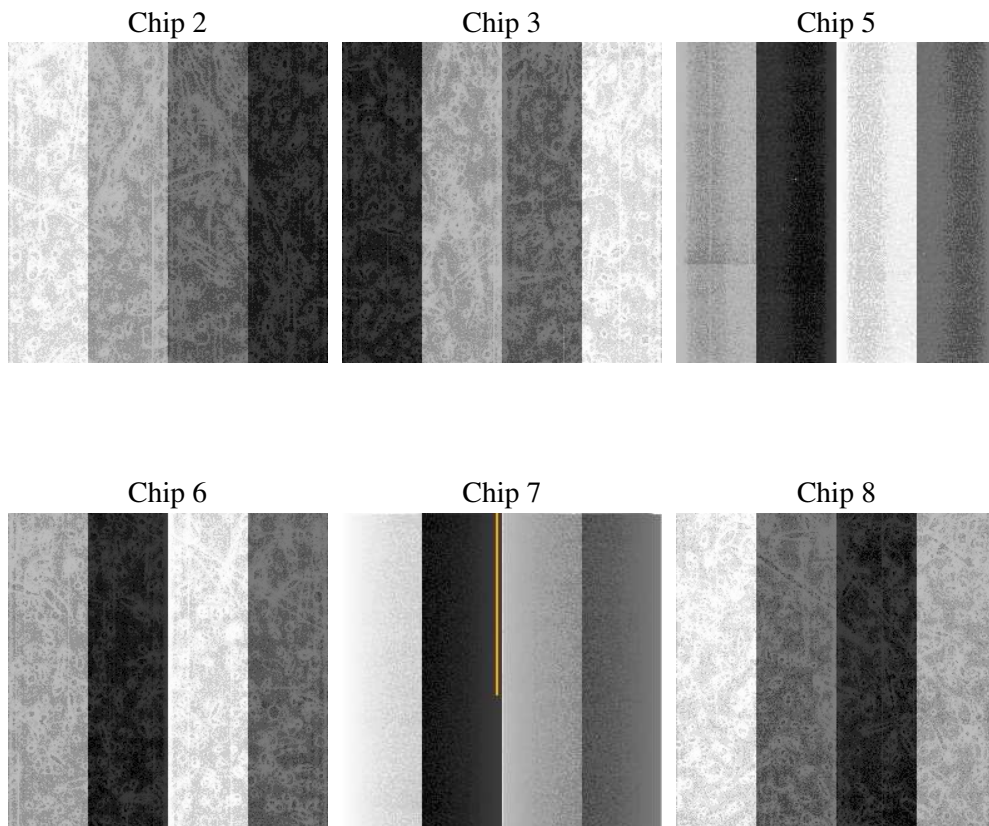
## 2 OBI

### 2.1 OBI

#### 2.1.1 Images



#### 2.1.2 Bias



### 2.1.3 Parameters

obi_num	0
ascdsver	7.6.8.1
caldsver	3.2.3
date	2006-09-06T13:55:38
revision	2

sched_exp_time	5400.000000
ontime	5363.8660172075
ontime2	5363.8660172075
ontime3	5363.8660172075
ontime5	5363.8660172075
ontime6	5363.8660172075
ontime7	5363.8660172075
ontime8	5363.8660172075
l1events	252330

### 2.1.4 Events

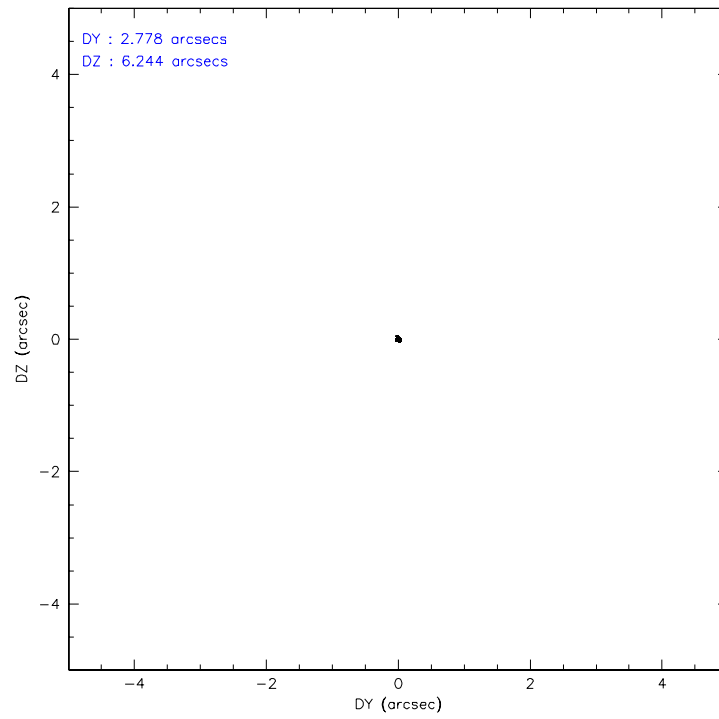
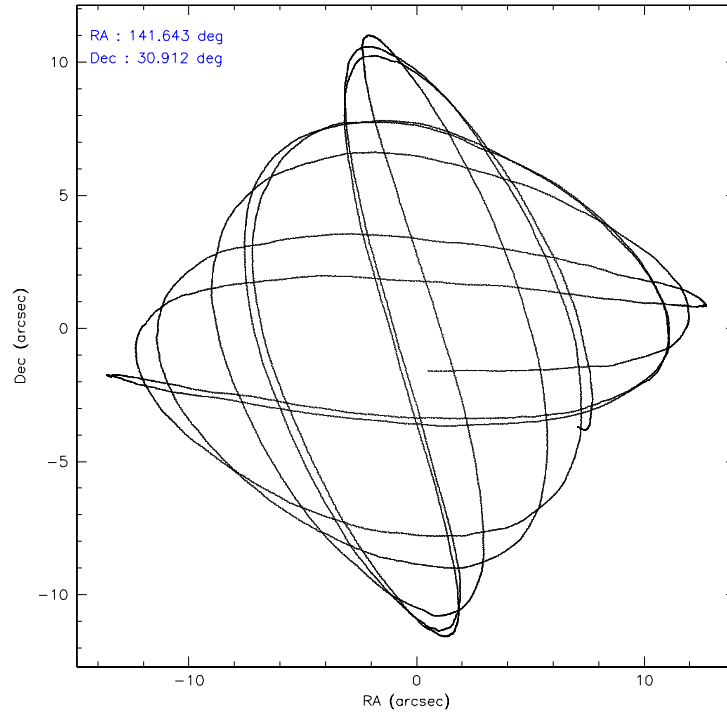
	ccd 2	ccd 3	ccd 5	ccd 6	ccd 7	ccd 8
level 1 events	36283	33613	52703	36908	46800	46023
rejected events	31989	29530	28633	32526	28806	36434
rejected %	88%	87%	54%	88%	61%	79%

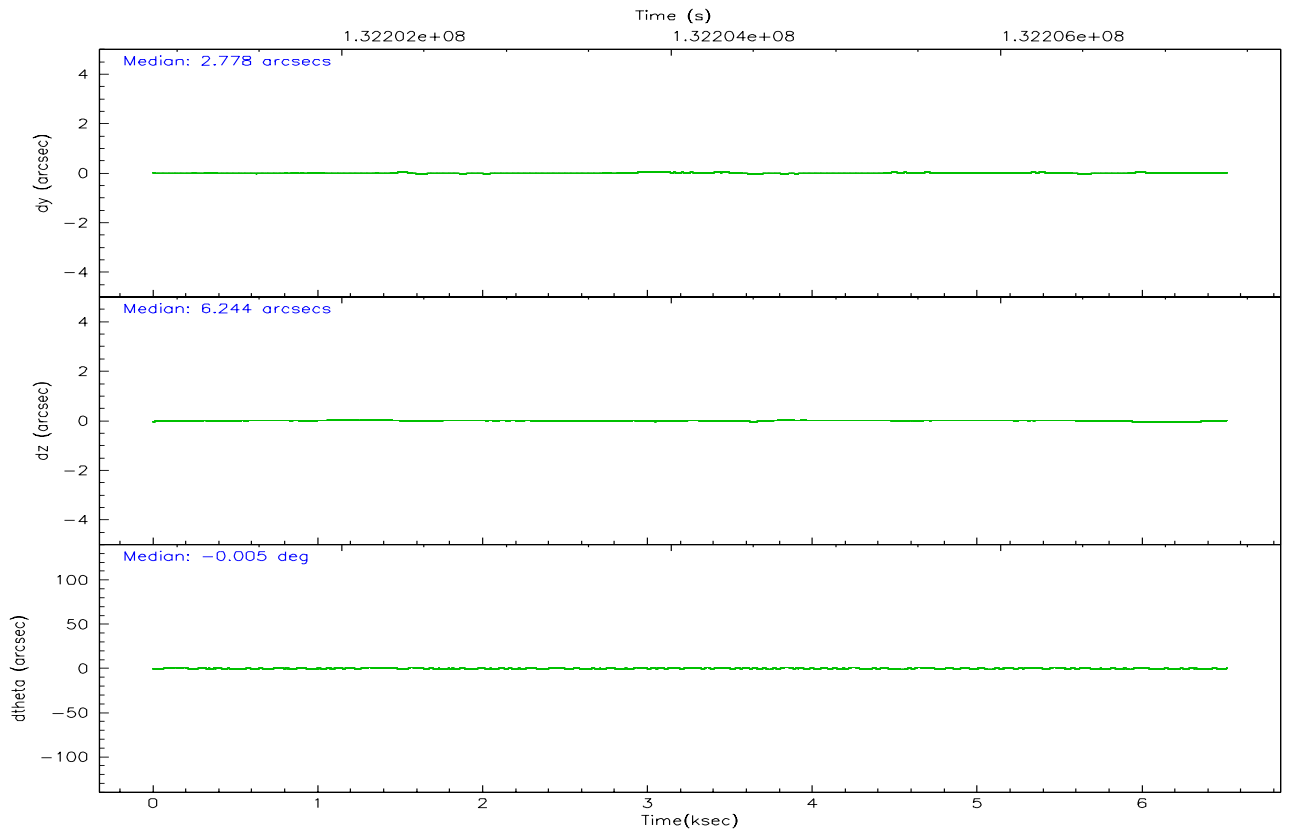
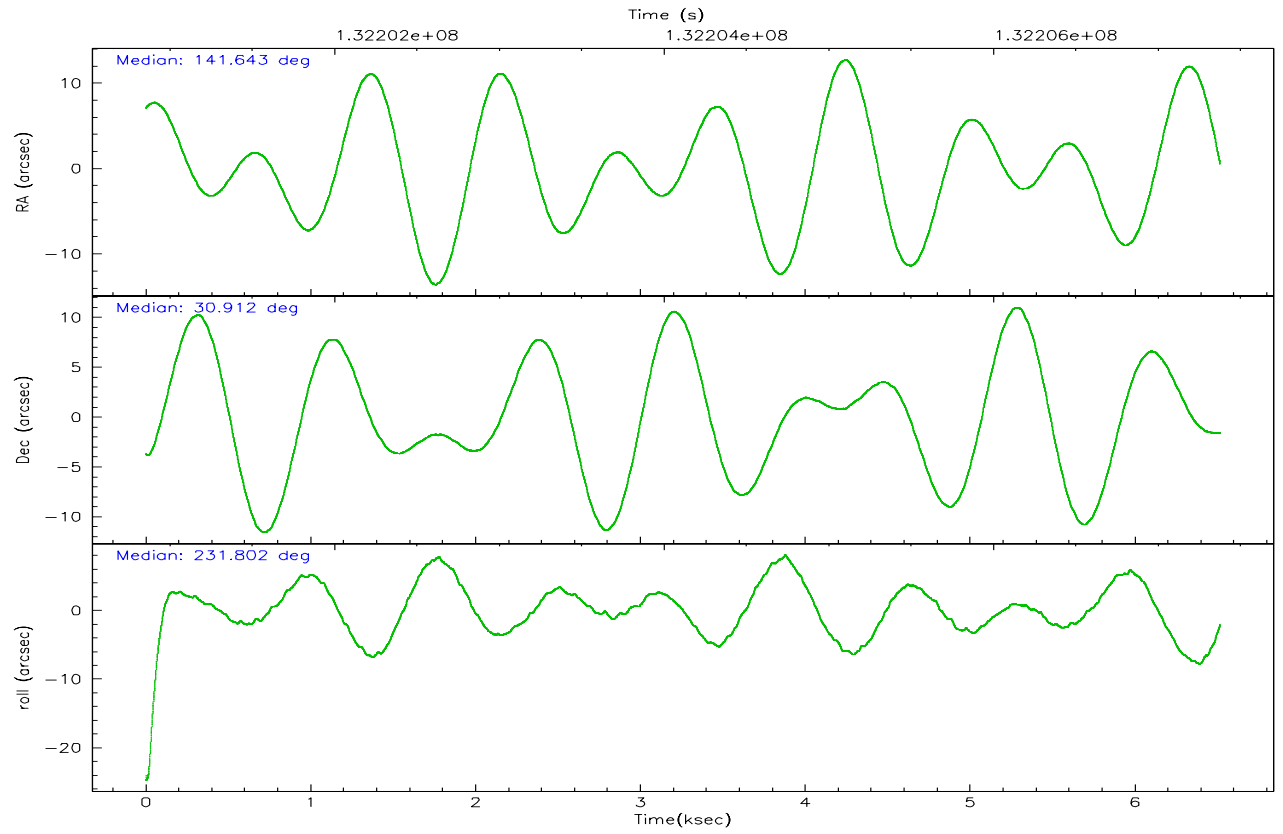
	ccd 2	ccd 3	ccd 5	ccd 6	ccd 7	ccd 8
grade 0 events	1884	1728	2753	1738	1125	3162
	5%	5%	5%	4%	2%	6%
grade 1 events	25	12	41	18	37	26
	0%	0%	0%	0%	0%	0%
grade 2 events	937	820	7379	948	4403	2011
	2%	2%	14%	2%	9%	4%
grade 3 events	394	368	575	433	922	1012
	1%	1%	1%	1%	1%	2%
grade 4 events	344	381	521	435	899	975
	0%	1%	0%	1%	1%	2%
grade 5 events	1301	1357	2552	1499	3050	2015
	3%	4%	4%	4%	6%	4%
grade 6 events	743	790	12874	833	10675	2439
	2%	2%	24%	2%	22%	5%
grade 7 events	30655	28157	26008	31004	25689	34383
	84%	83%	49%	84%	54%	74%

## 2.2 Compared Parameters

Parameter	Planned	Actual	Parameter	Planned	Actual
Instrument	ACIS	ACIS	Obspar format version number	6	6
Detector	ACIS-235678	ACIS-235678	Obspar file type	PREDICTED	ACTUAL
Grating	NONE	NONE	Obspar update status	NONE	UPDATED
Data mode	FAINT	FAINT	On-chip summing requested	N	N
Observation mode	POINTING	POINTING	Subarray requested	NONE	NONE
Pointing RA	141.646938	141.6429268132761	Alternating exposures requested	N	N
Pointing Dec	30.938898	30.91193474109631	Primary exposure time	0.000000	3.2
Pointing Roll	231.644427	231.8030808275608			
SIM focus pos (mm)	-0.684267	-0.6828225247311905			
SIM defocus (mm)	0	0.001444936568705701			
SIM translation stage pos (mm)	-190.132523	-190.1425803651734			
SIM translation stage offset (mm)	0	0.01005778216563158			
Observation start time	132201974.184000	132200551.84008			
Observation start date	2002-03-11T02:45:10	2002-03-11T02:22:31			
Observation end time	132207374.184000	132207892.89037			
Observation end date	2002-03-11T04:15:10	2002-03-11T04:24:52			
Read mode	TIMED	TIMED			

## 2.3 Aspect





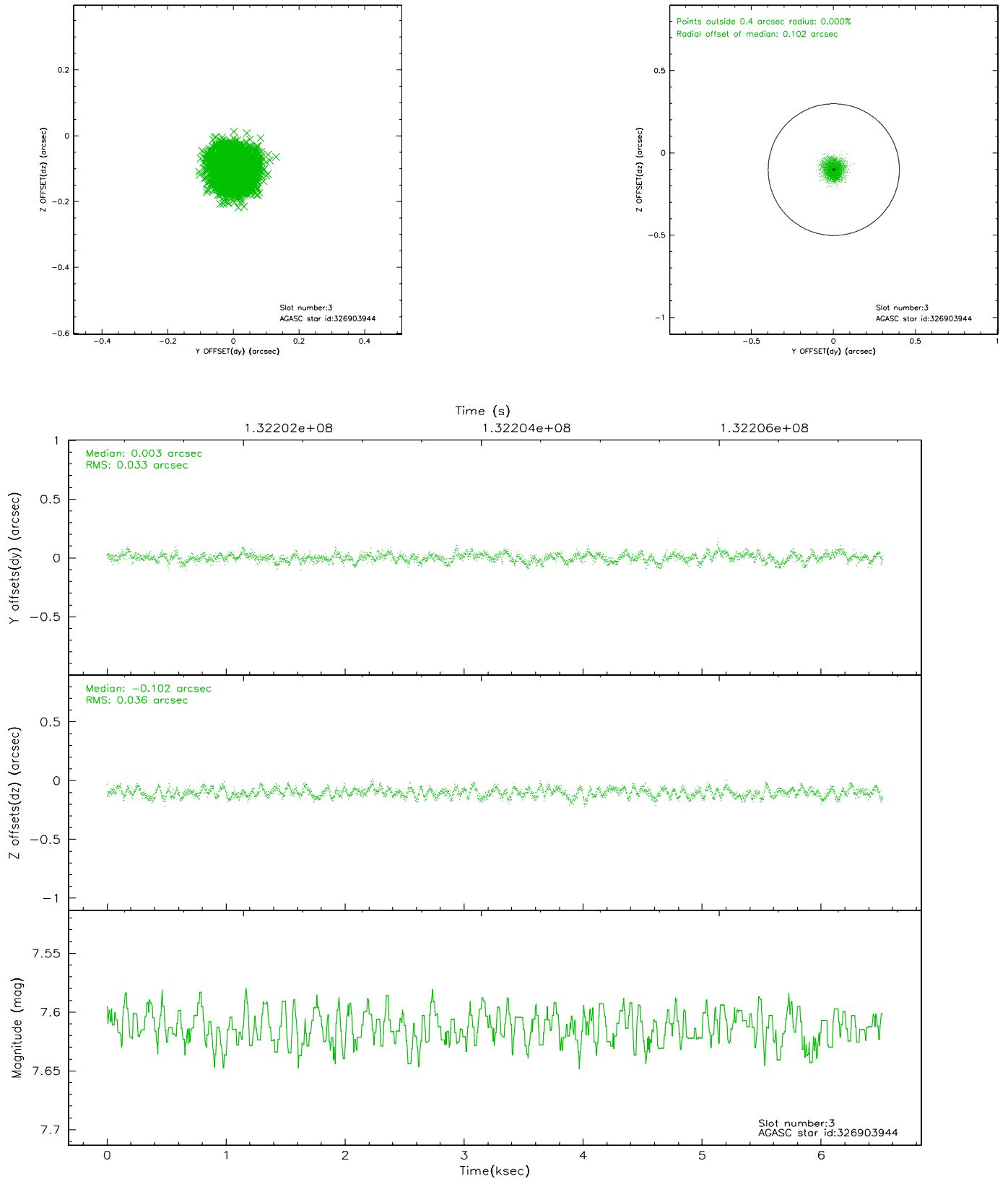
# Slot Statistics

slot	status	id	mag	n_pts	med_dy	med_dz	dr1	dr2	ra	dec	mean_y	mean_z
0	FID	ACIS-S-2	7.11	1589	-0.020	0.037	0.007	0.011	0.000000	0.000000	-755.40	-1727.32
1	FID	ACIS-S-4	7.20	1590	-0.070	-0.000	0.005	0.009	0.000000	0.000000	2157.38	180.26
2	FID	ACIS-S-5	7.24	1590	0.058	-0.028	0.006	0.010	0.000000	0.000000	-1807.05	174.85
3	GUIDE	326903944	7.61	3180	0.003	-0.102	0.053	0.082	141.372366	30.493208	1786.87	327.20
4	GUIDE	326898392	8.35	3179	0.008	-0.035	0.058	0.095	141.640946	31.182886	-676.04	-559.57
5	GUIDE	326894960	8.95	3180	0.060	0.124	0.069	0.113	141.736989	30.296358	1640.75	1654.73
6	GUIDE	326901944	9.41	3180	0.026	-0.053	0.089	0.145	141.495586	31.315890	-774.38	-1207.17
7	GUIDE	326897688	9.48	3177	-0.097	0.067	0.109	0.171	142.494853	31.202172	-2370.87	1452.56

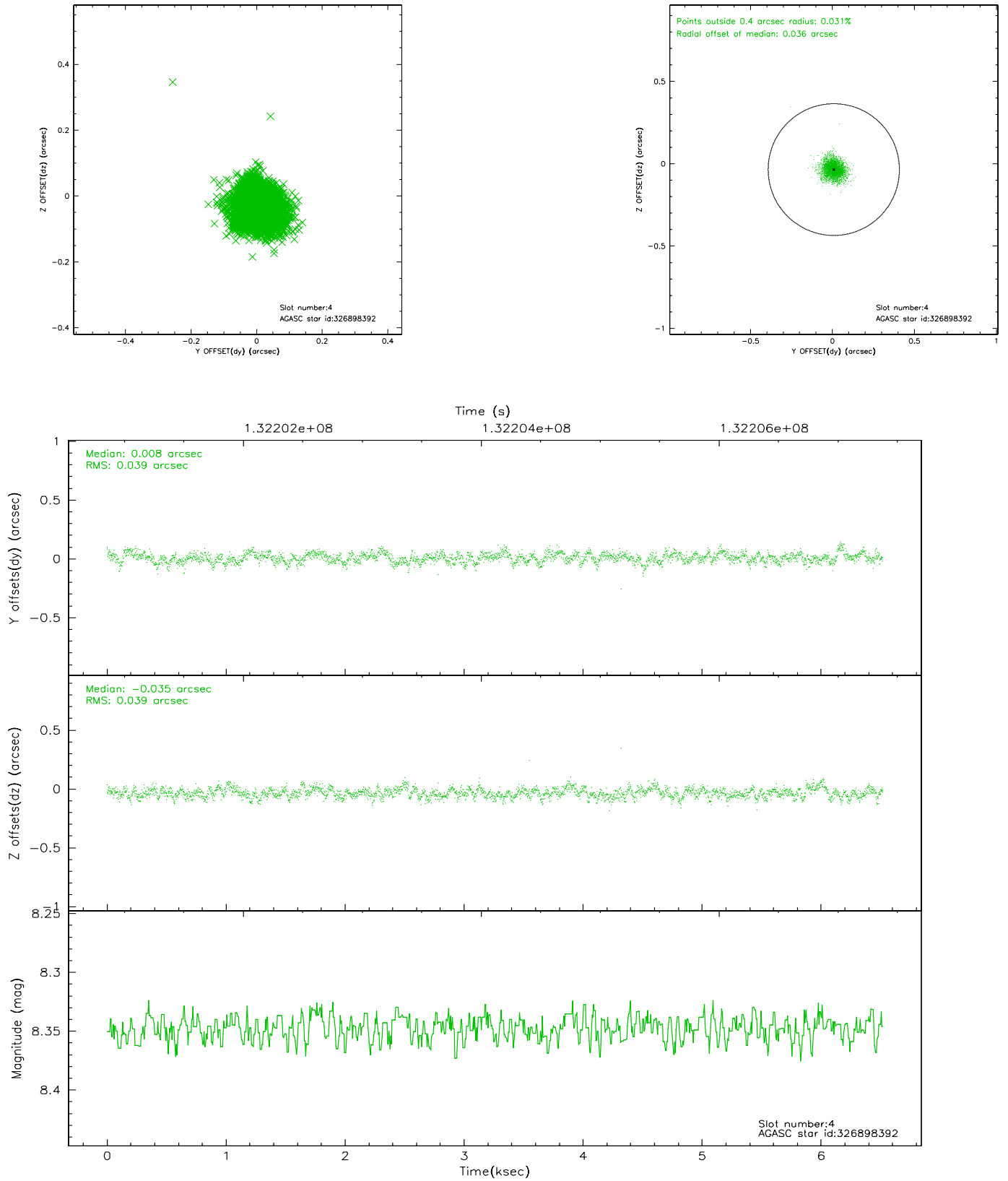


## 2.4 Star Slots

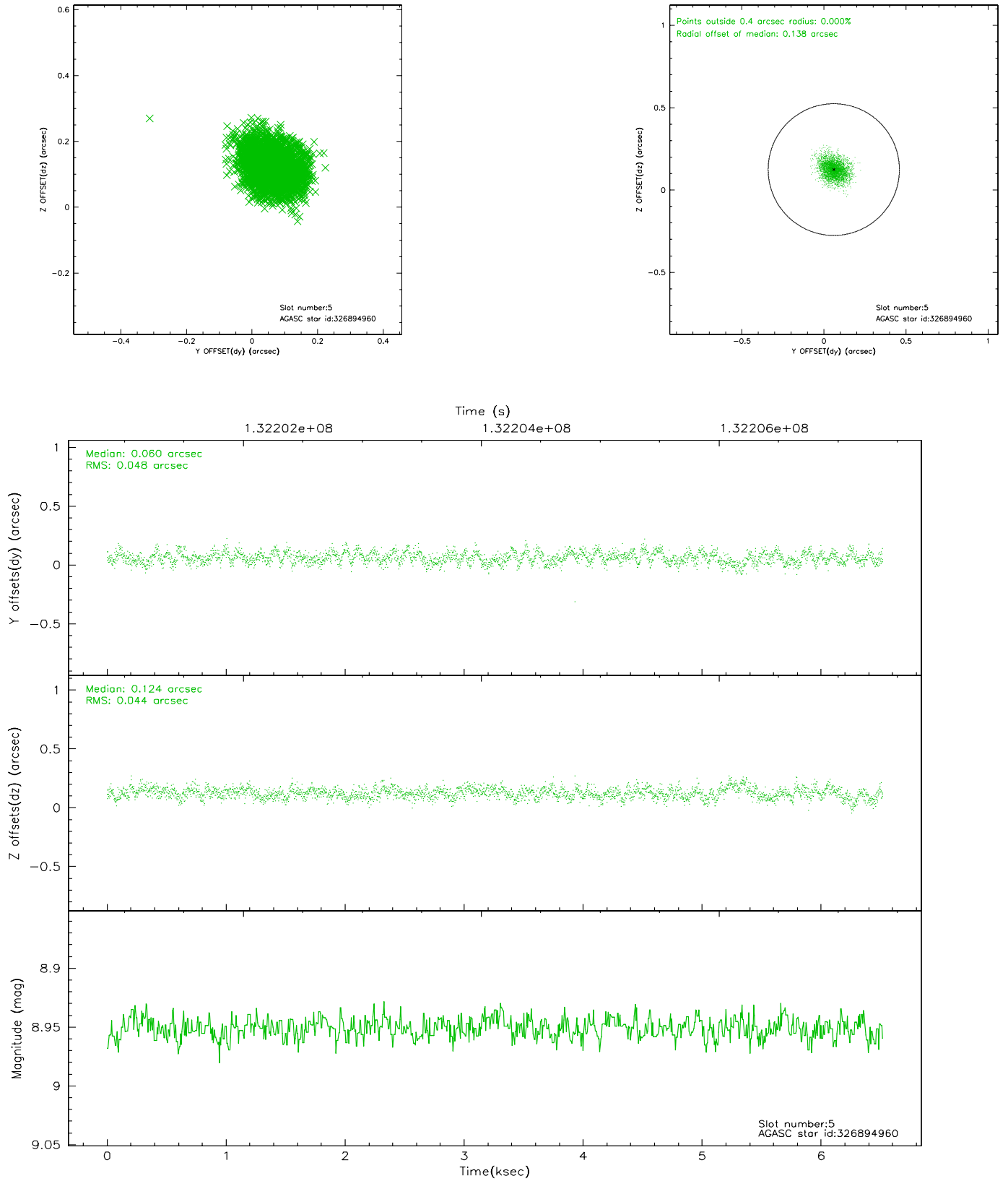
### 2.4.1 Slot 3



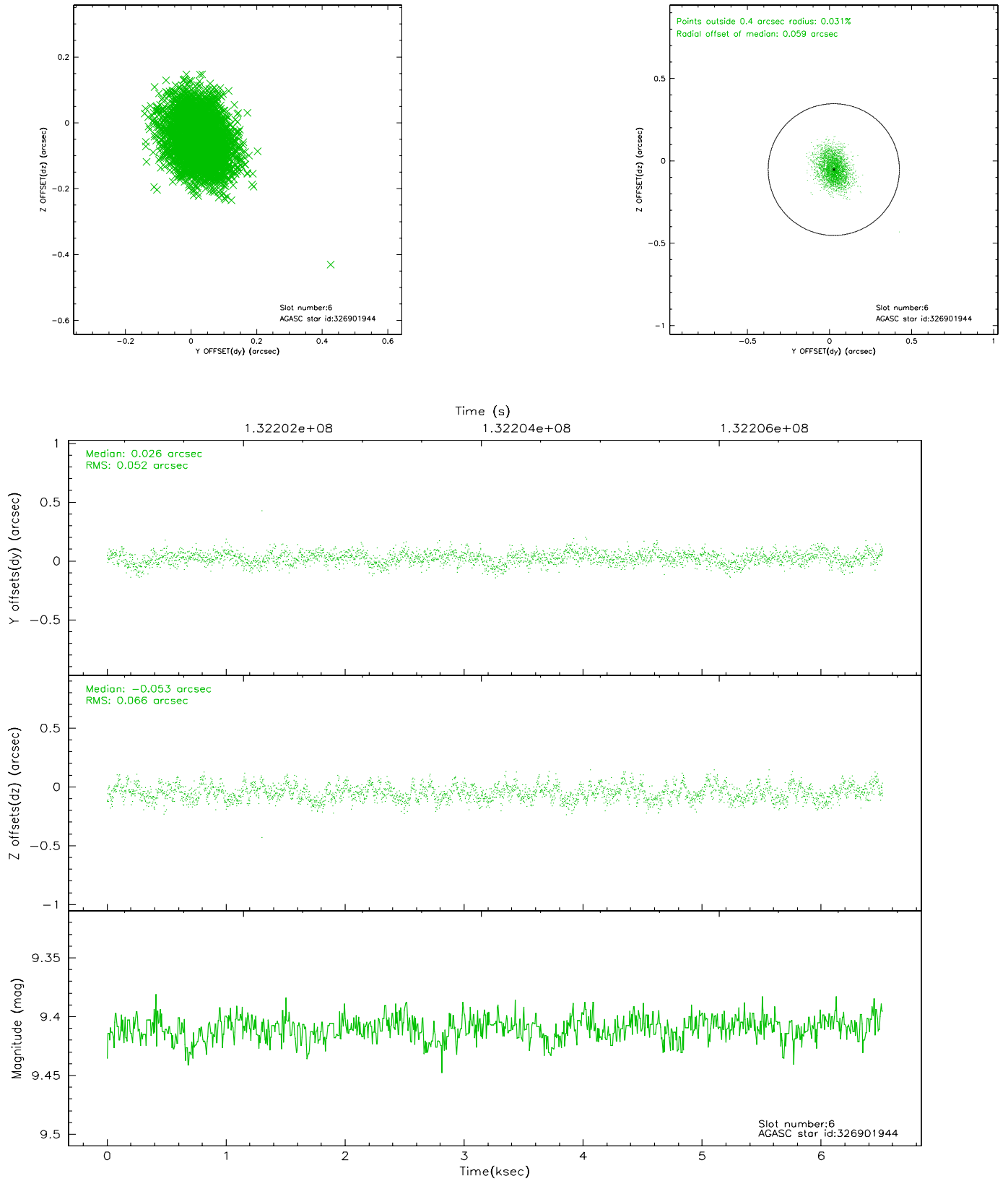
## 2.4.2 Slot 4



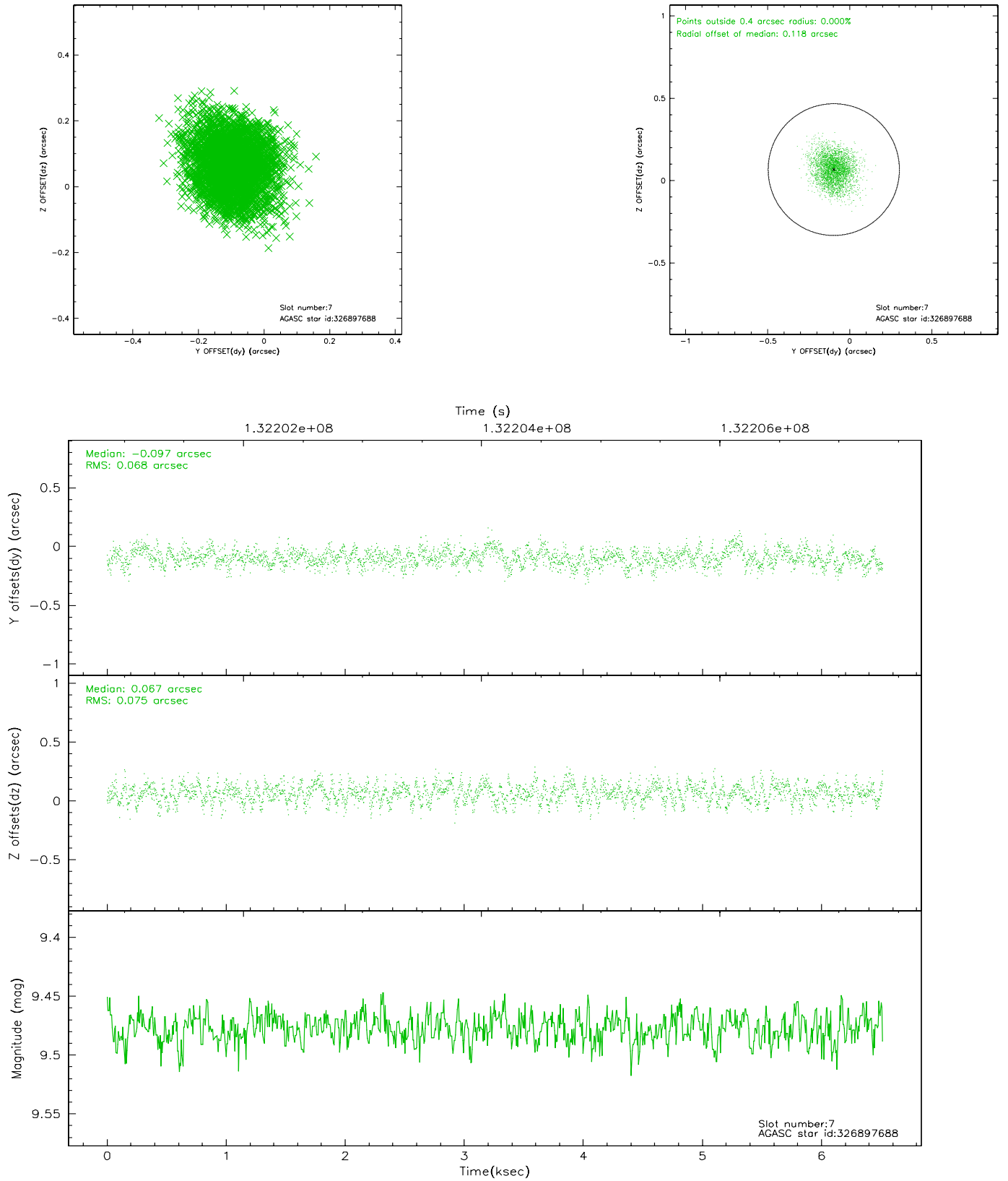
### 2.4.3 Slot 5



## 2.4.4 Slot 6

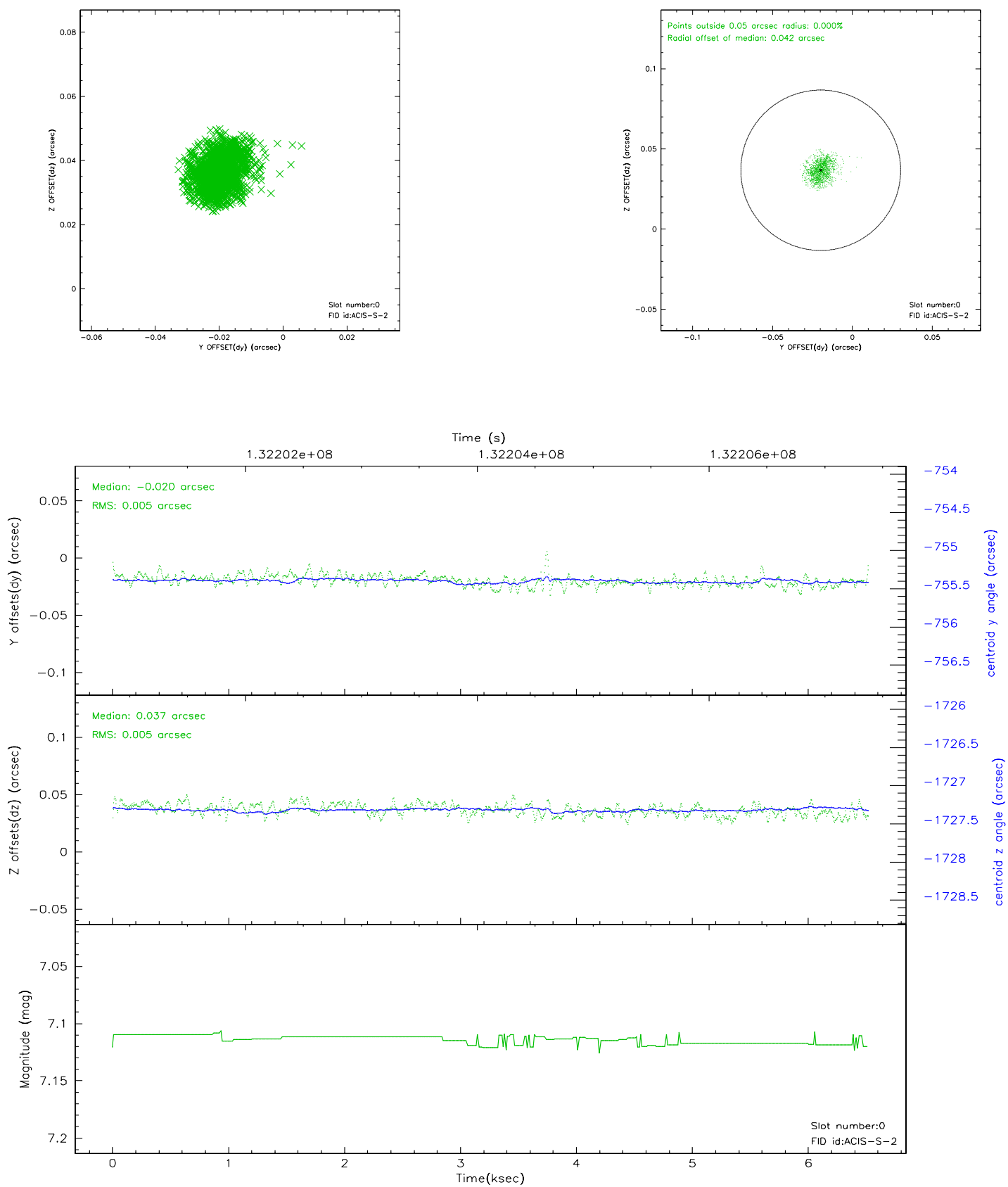


## 2.4.5 Slot 7

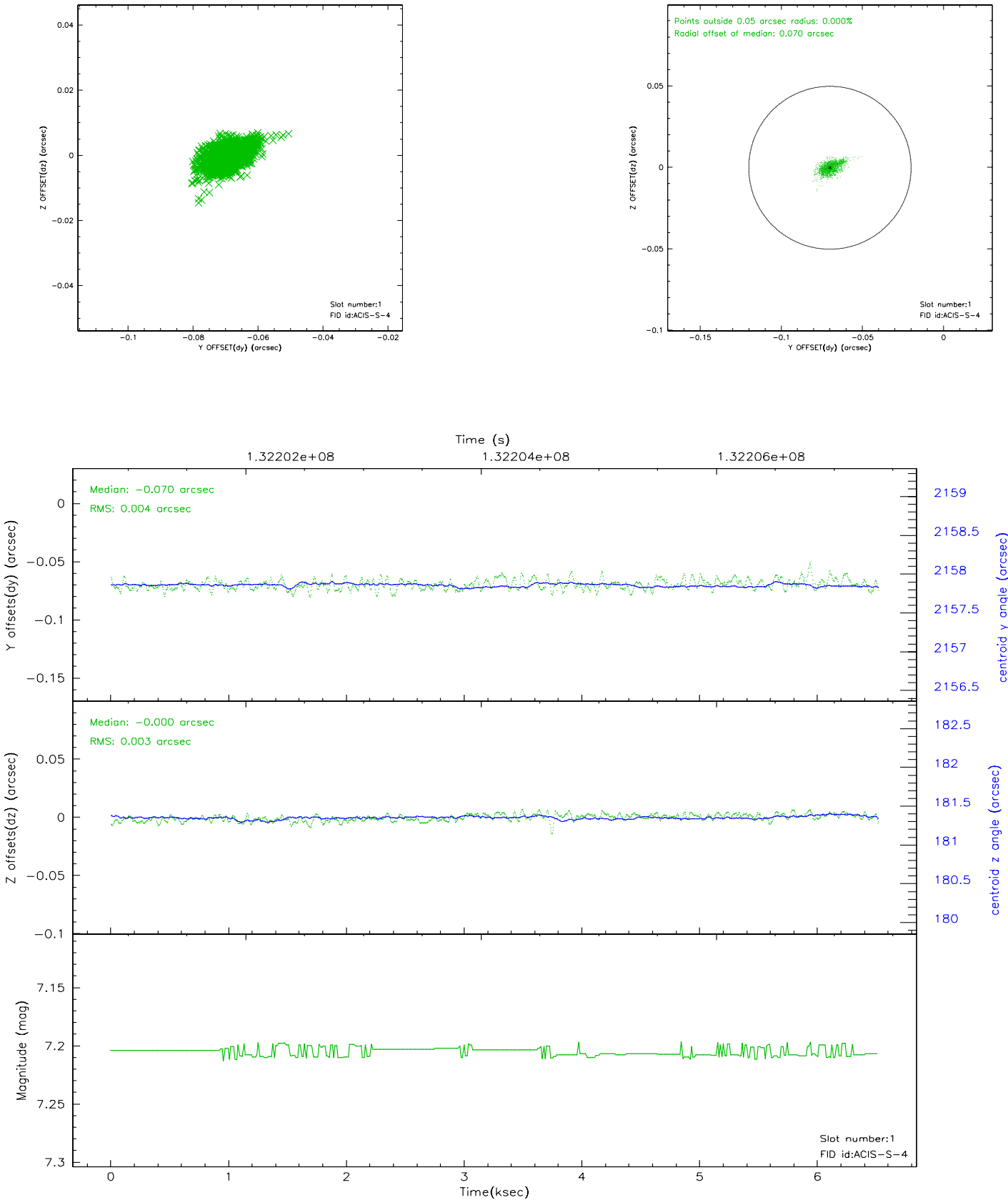


## 2.5 FID Slots

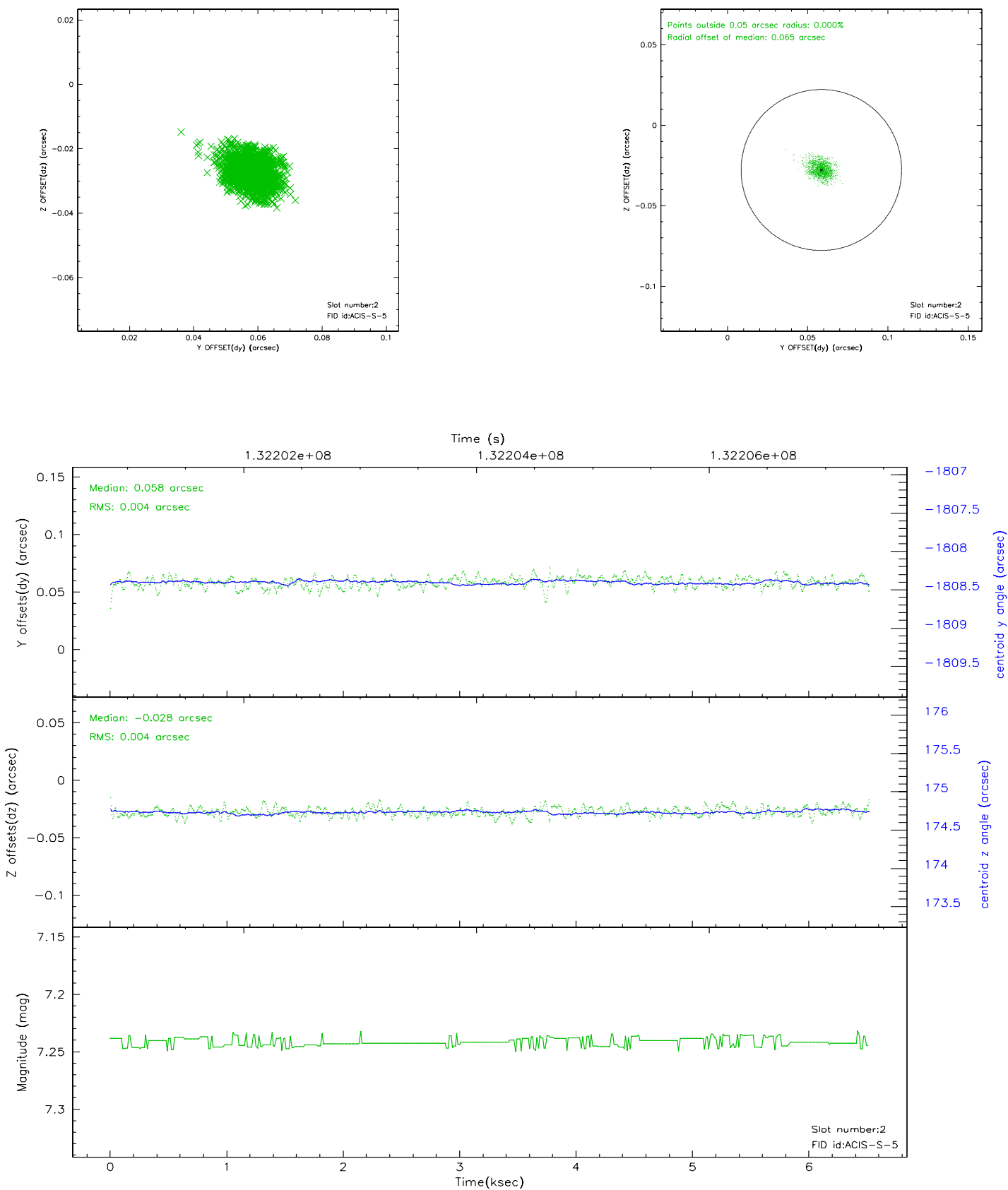
### 2.5.1 Slot 0



2.5.2 Slot 1

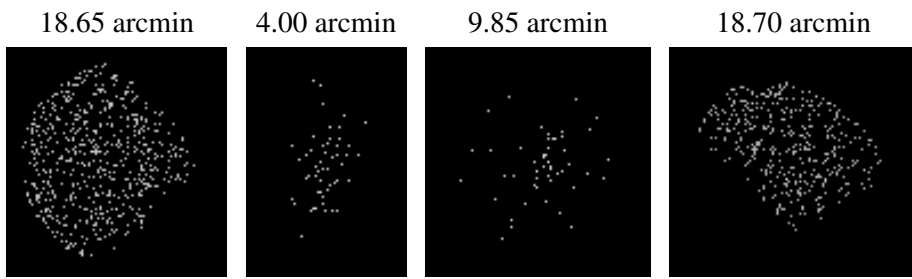


### 2.5.3 Slot 2





### 3 Point Sources



## A Summary

### A.1 Status

V&V Scientist	Beth Sundheim
V&V Date (YYYY-MM-DD)	2006.09.06
V&V Edition	1
V&V Disposition and Status	OK
V&V Charge Time	5.36

### A.2 Comments