

V&V Reference Report

L2 ASCDS Version : 8.4.5

Observation 3139 - L2 Version 5
Chandra X-Ray Center

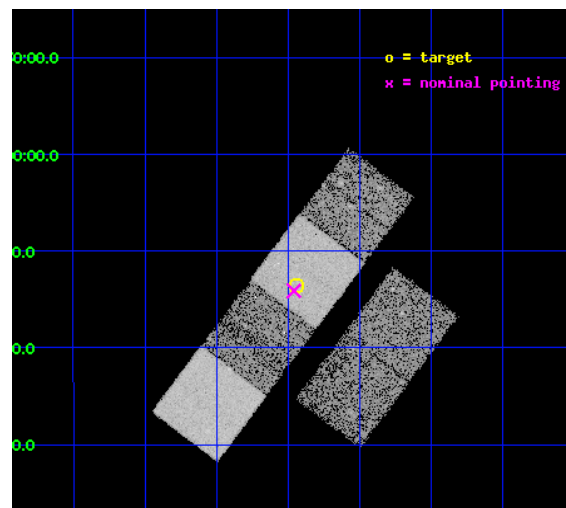
L2 Processing Date : Oct 3 2012

Contents

1	Front	2
2	OBI	3
2.1	OBI	3
2.1.1	Images	3
2.1.2	Bias	3
2.1.3	Parameters	4
2.1.4	Events	4
2.2	Compared Parameters	5
2.3	Aspect	6
2.4	Star Slots	9
2.4.1	Slot 3	9
2.4.2	Slot 4	10
2.4.3	Slot 5	11
2.4.4	Slot 6	12
2.4.5	Slot 7	13
2.5	FID Slots	14
2.5.1	Slot 0	14
2.5.2	Slot 1	15
2.5.3	Slot 2	16
A	Summary	17
A.1	Status	17
A.2	Comments	17

1 Front

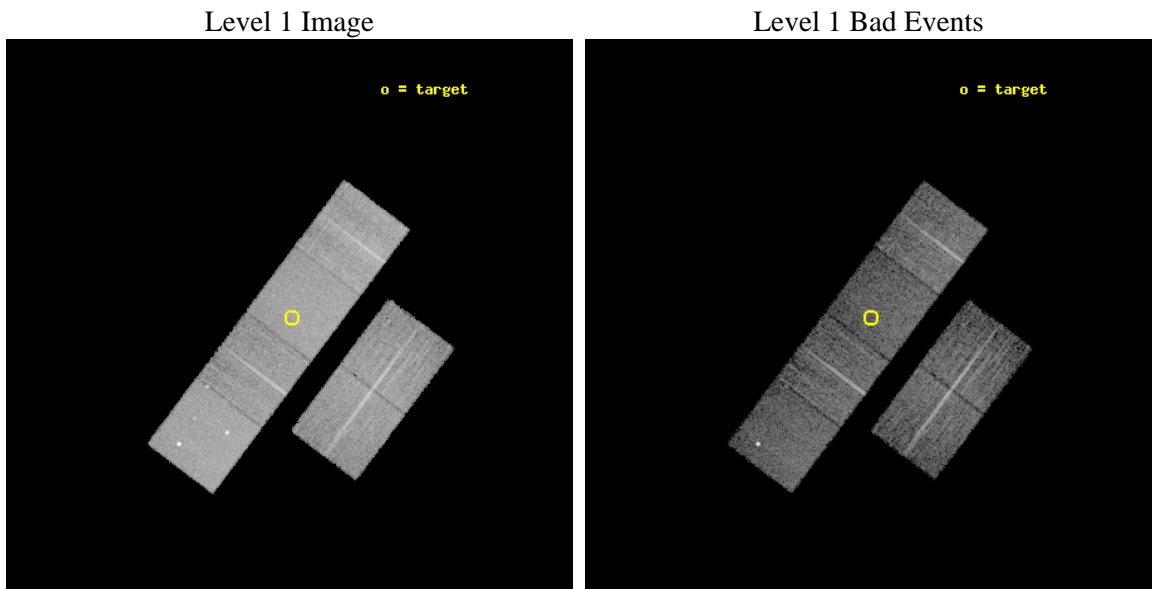
seq_num	700578	Sequence number
obs_id	3139	Observation id
title	PROBING THE X-RAY EMISSION OF HIGH LUMINOSITY EMISSION LINE GALAXIES: QUASAR-2s AND THE STARBURST-AGN CONNECTION	Proposal title
observer	Prof. Paolo Coppi	Principal investigator
object	QUEST 0928-0213	Source name
dtcycle	0	
cycle	P	events from which exps? Prim/Second/Both
ra_targ	142.235417	Observer's specified target RA [deg]
dec_targ	-2.226528	Observer's specified target Dec [deg]
ra_nom	142.23987112122	Nominal RA [deg]
dec_nom	-2.2352081281365	Nominal Dec [deg]
roll_nom	306.9925431669	Nominal Roll [deg]
revision	5	Processing version of data
ontime	8939.5002937913	Sum of GTIs [s]
livetime	8826.3029583505	Livetime [s]
ontime2	8939.5413337946	Sum of GTIs [s]
ontime3	8939.3771737963	Sum of GTIs [s]
ontime5	8939.459253788	Sum of GTIs [s]
ontime6	8939.4182137996	Sum of GTIs [s]
ontime7	8939.5002937913	Sum of GTIs [s]
ontime8	8936.0950439423	Sum of GTIs [s]
l2events	97250	Number of level 2 events



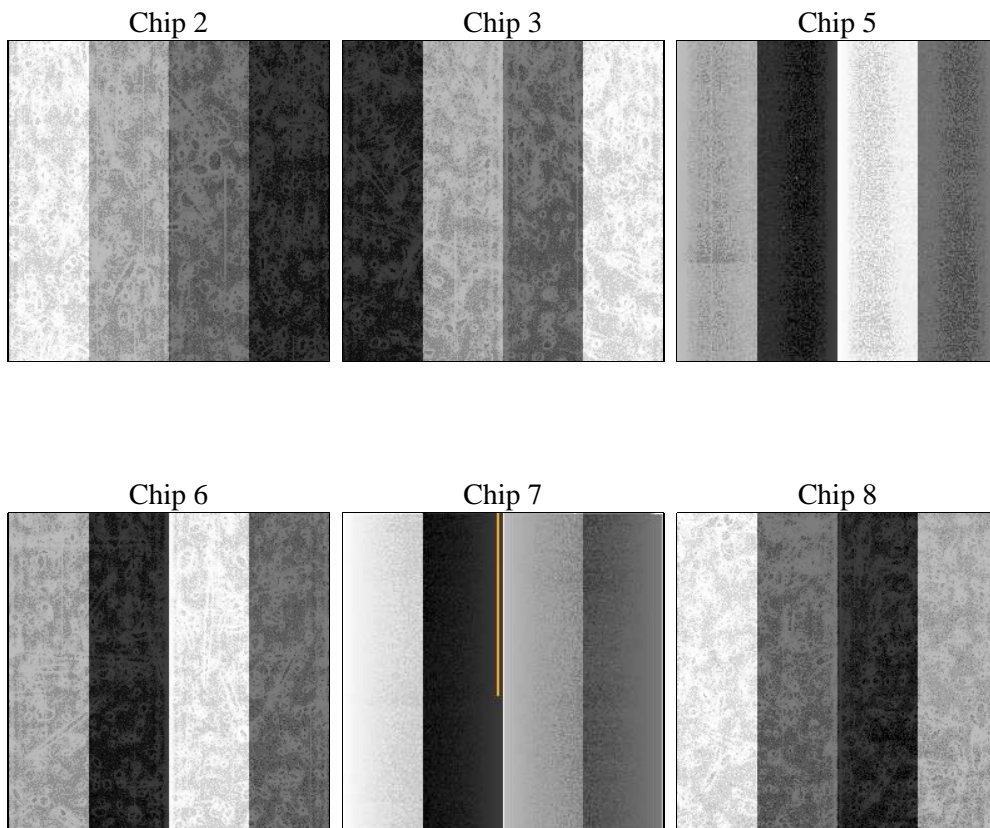
2 OBI

2.1 OBI

2.1.1 Images



2.1.2 Bias



2.1.3 Parameters

obi_num	0	Obi number	sched_exp_time	9200.000000	[s] Scheduled observation exposure time
ascdsver	8.4.5	Processing system revision	ontime	8939.5002937913	Sum of GTIs [s]
caldsver	4.5.2	 	ontime2	8939.5413337946	Sum of GTIs [s]
date	2012-10-03T12:55:27	Date and time of file creation	ontime3	8939.3771737963	Sum of GTIs [s]
revision	5	Processing version of data	ontime5	8939.459253788	Sum of GTIs [s]
			ontime6	8939.4182137996	Sum of GTIs [s]
			ontime7	8939.5002937913	Sum of GTIs [s]
			ontime8	8936.0950439423	Sum of GTIs [s]
			l1events	442999	Number of level 1 events

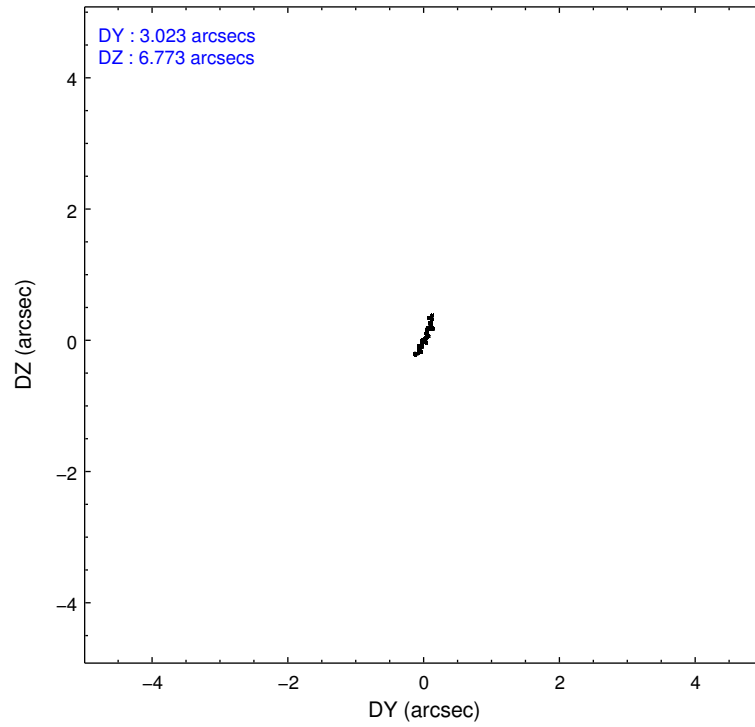
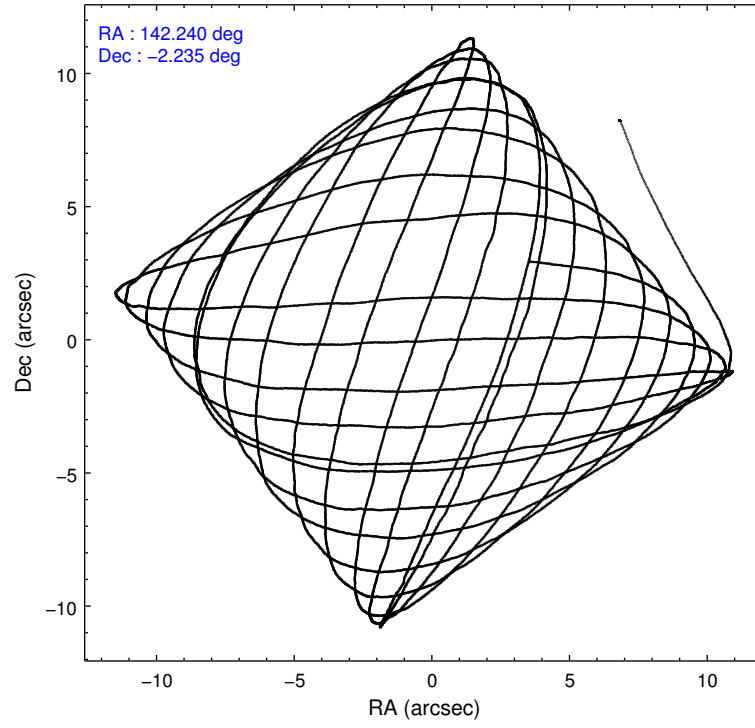
2.1.4 Events

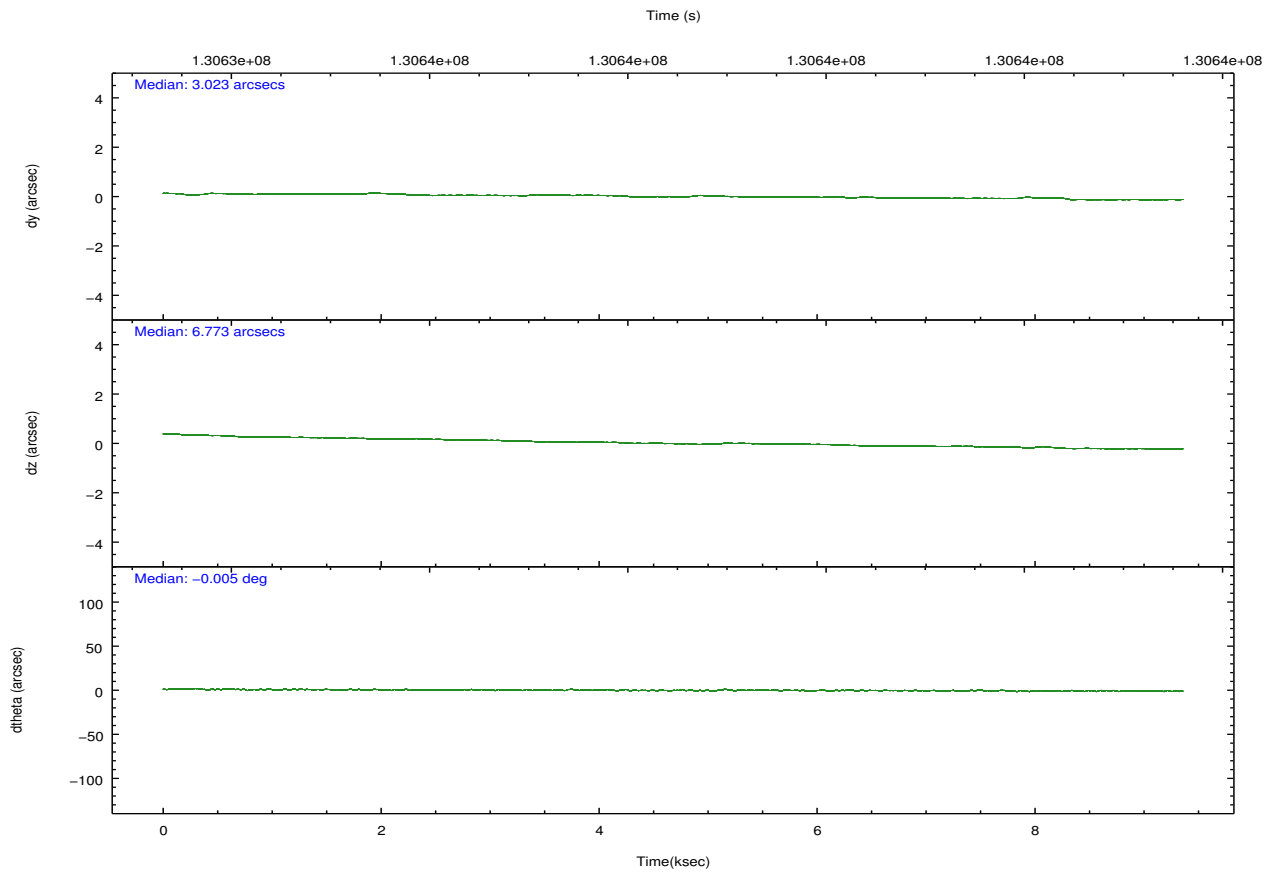
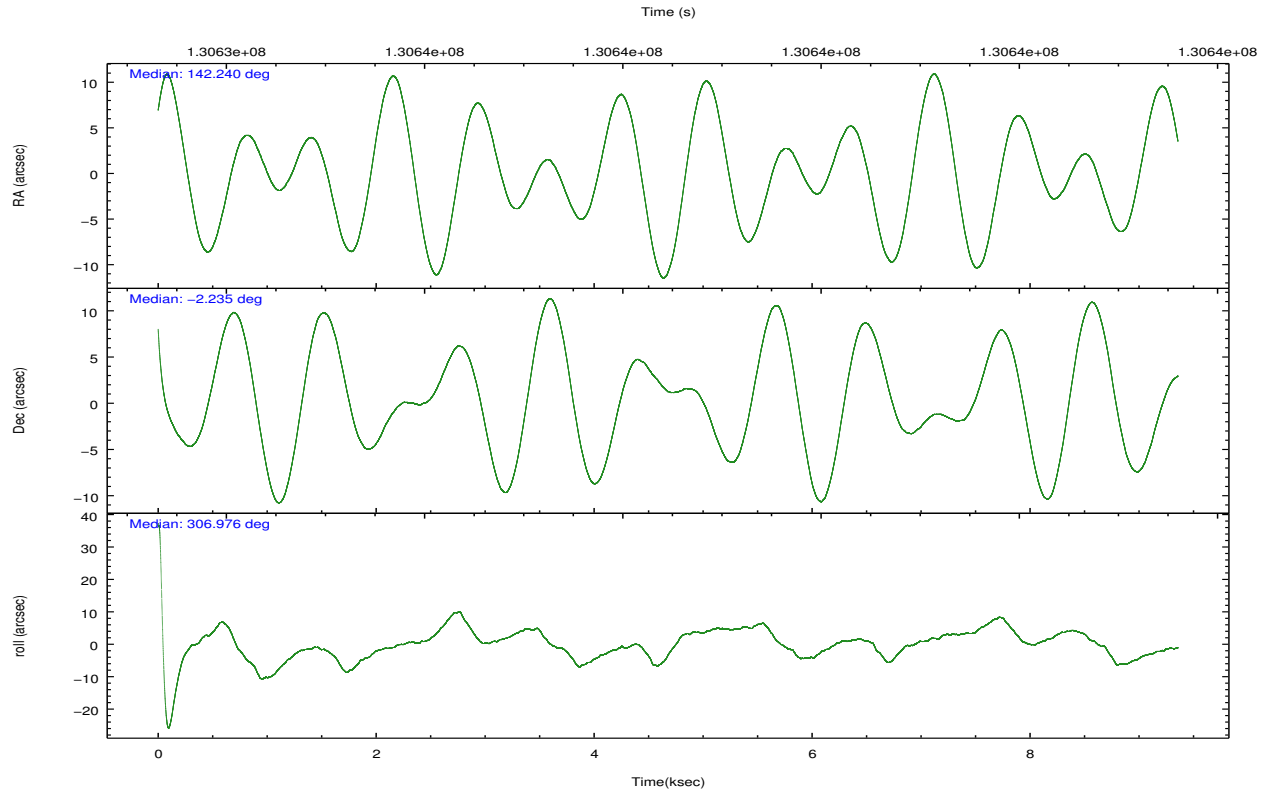
	ccd 2	ccd 3	ccd 5	ccd 6	ccd 7	ccd 8		ccd 2	ccd 3	ccd 5	ccd 6	ccd 7	ccd 8
level 1 events	62549	60050	90545	62839	79535	87481	grade 0 events	3134	3107	4977	3214	3188	7122
rejected events	55055	52559	48934	55119	46179	65990		5%	5%	5%	5%	4%	8%
rejected %	88%	87%	54%	87%	58%	75%	grade 1 events	25	21	158	35	76	66
								0%	0%	0%	0%	0%	0%
							grade 2 events	1697	1640	12331	1725	6657	4049
								2%	2%	13%	2%	8%	4%
							grade 3 events	619	689	1756	677	3021	2780
								0%	1%	1%	1%	3%	3%
							grade 4 events	638	660	1612	705	2923	2487
								1%	1%	1%	1%	3%	2%
							grade 5 events	2182	2346	7916	2721	7612	3415
								3%	3%	8%	4%	9%	3%
							grade 6 events	1415	1400	20965	1410	17591	5059
								2%	2%	23%	2%	22%	5%
							grade 7 events	52839	50187	40830	52352	38467	62503
								84%	83%	45%	83%	48%	71%

2.2 Compared Parameters

Parameter	Planned	Actual	Parameter	Planned	Actual
Instrument	ACIS	ACIS	Obspar format version number	7	7
Detector	ACIS-235678	ACIS-235678	Obspar file type	PREDICTED	ACTUAL
Grating	NONE	NONE	Obspar update status	NONE	UPDATED
Data mode	FAINT	FAINT	Number of optional ACIS chips dropped	0	0
Observation mode	POINTING	POINTING	On-chip summing requested	N	N
[deg] Pointing RA	142.214564	142.2398711212207	Subarray requested	NONE	NONE
[deg] Pointing Dec	-2.224846	-2.235208128136501	Alternating exposures requested	N	N
[deg] Pointing Roll	306.834834	306.9925431668993	[s] Primary exposure time	0.000000	3.2
[mm] SIM focus pos	-0.684267	-0.6828225247311905			
[mm] SIM defocus	0	0.001444936568705701			
[mm] SIM translation stage pos	-190.132523	-190.1425803651734			
[mm] SIM translation stage offset	0	0.01005778216563158			
[s] Observation start time (MET)	130633933.184000	130632947.01419			
Observation start date	2002-02-20T23:11:09	2002-02-20T22:55:47			
[s] Observation end time (MET)	130643133.184000	130643722.83962			
Observation end date	2002-02-21T01:44:29	2002-02-21T01:55:22			
Read mode	TIMED	TIMED			

2.3 Aspect



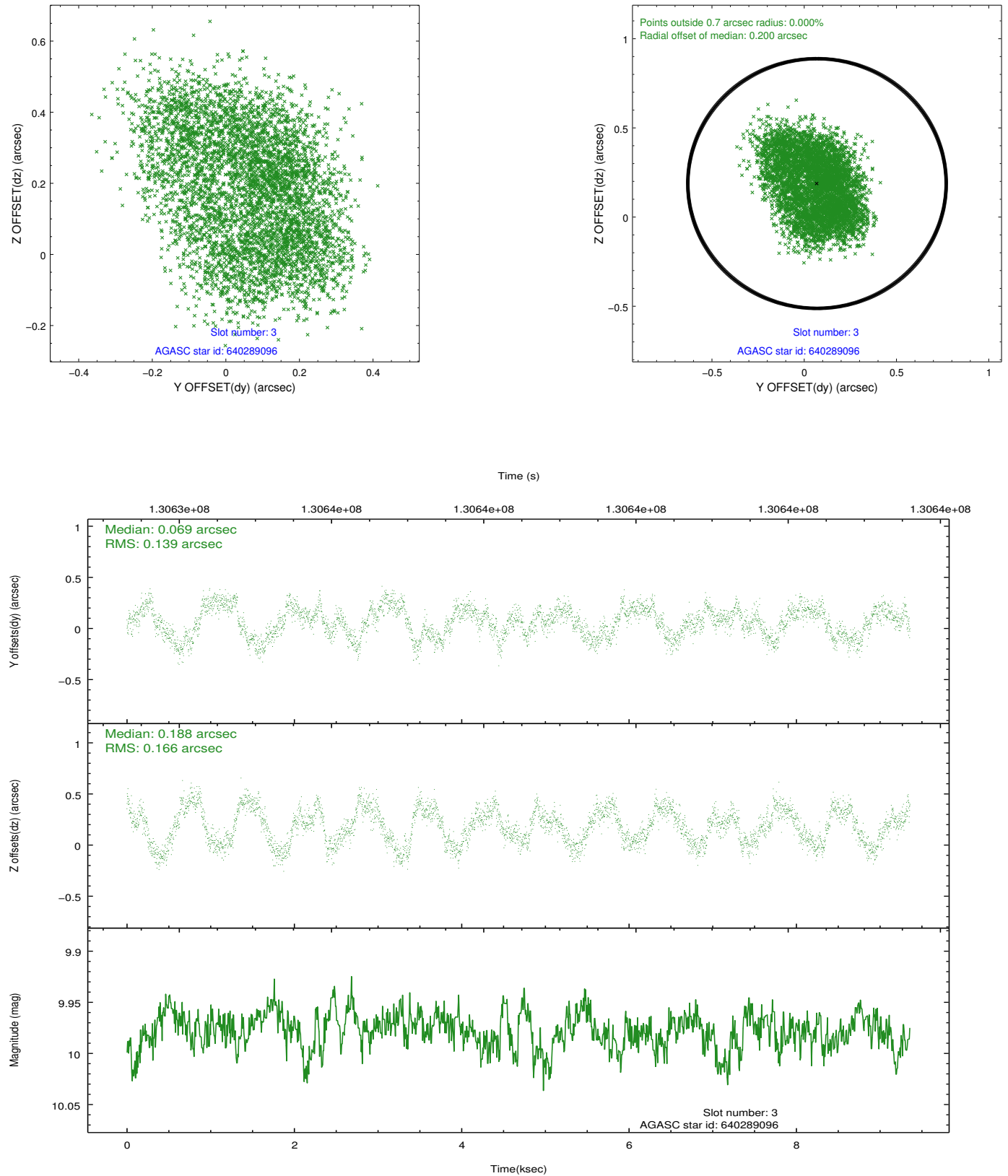


Slot Statistics

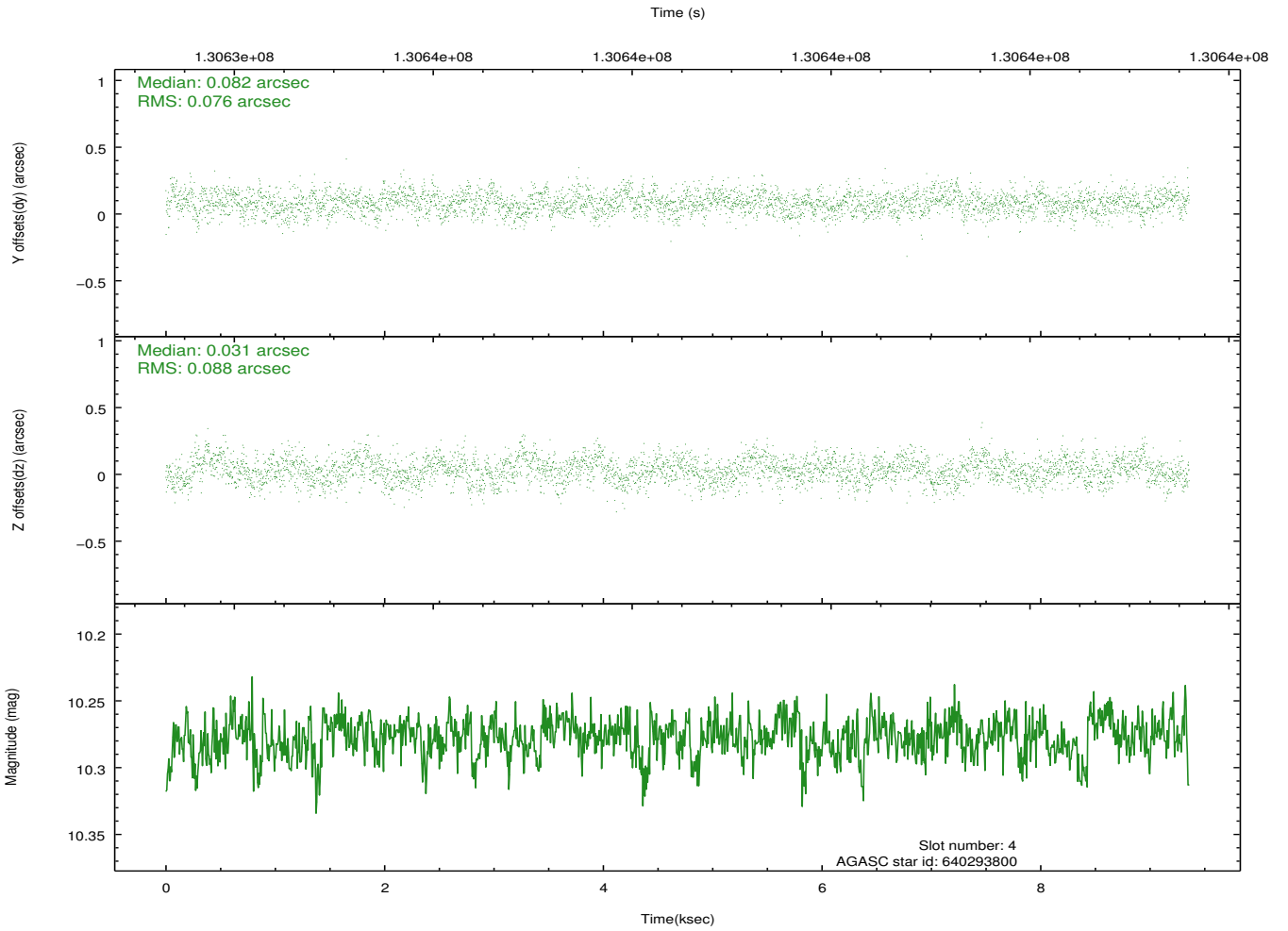
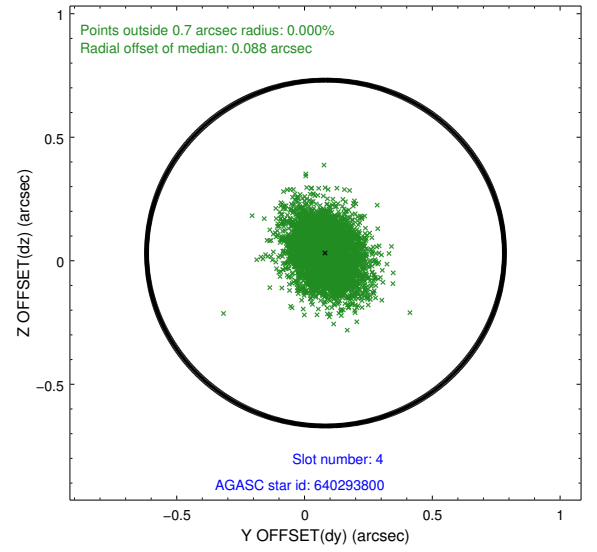
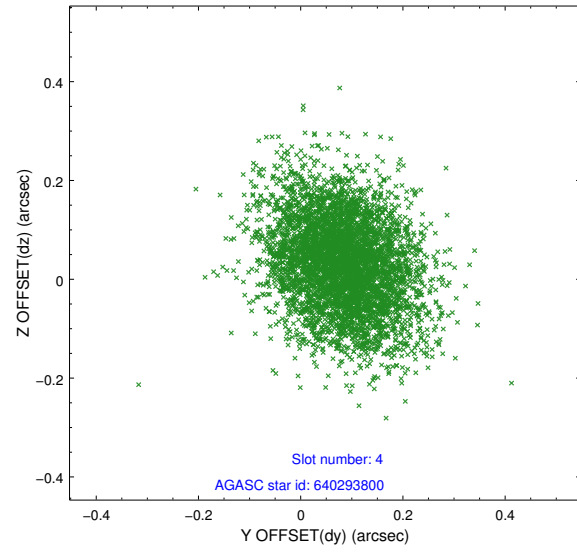
slot	status	id	mag	n_pts	med_dy	med_dz	dr1	dr2	ra	dec	mean_y	mean_z
0	FID	ACIS-S-2	7.12	2283	-0.020	0.008	0.008	0.014	0.000000	0.000000	-755.67	-1727.91
1	FID	ACIS-S-4	7.20	2283	-0.025	0.007	0.005	0.010	0.000000	0.000000	2157.32	180.01
2	FID	ACIS-S-5	7.24	2283	0.014	-0.007	0.009	0.015	0.000000	0.000000	-1807.76	174.28
3	GUIDE	640289096	9.98	4563	0.069	0.188	0.238	0.347	142.088285	-2.112130	-596.57	-121.46
4	GUIDE	640293800	10.28	4561	0.082	0.031	0.123	0.203	142.046495	-2.488056	396.58	-1052.92
5	GUIDE	640293968	8.48	4563	-0.129	0.131	0.096	0.152	142.391156	-2.909281	2353.41	-969.64
6	GUIDE	640299248	6.47	4566	-0.162	-0.287	0.072	0.122	142.351842	-2.205173	240.01	436.15
7	GUIDE	641865728	10.14	4552	0.143	-0.056	0.134	0.215	142.657425	-2.550701	1894.49	570.87

2.4 Star Slots

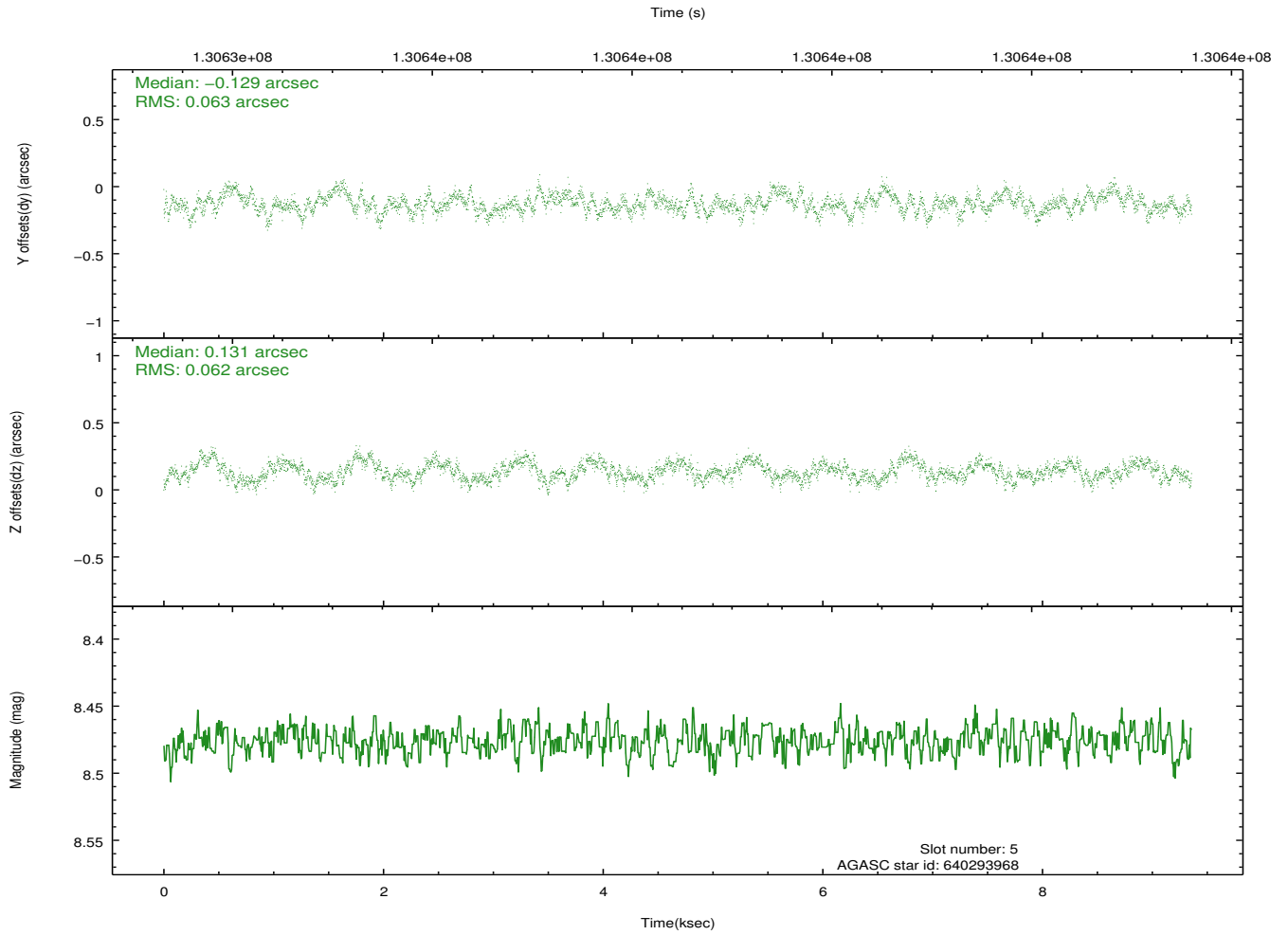
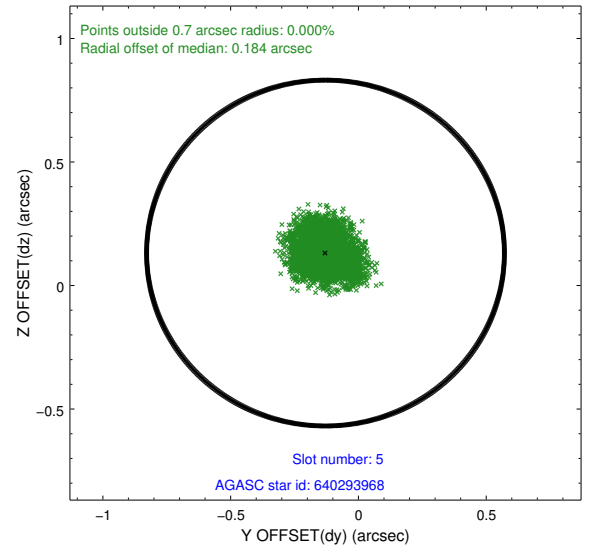
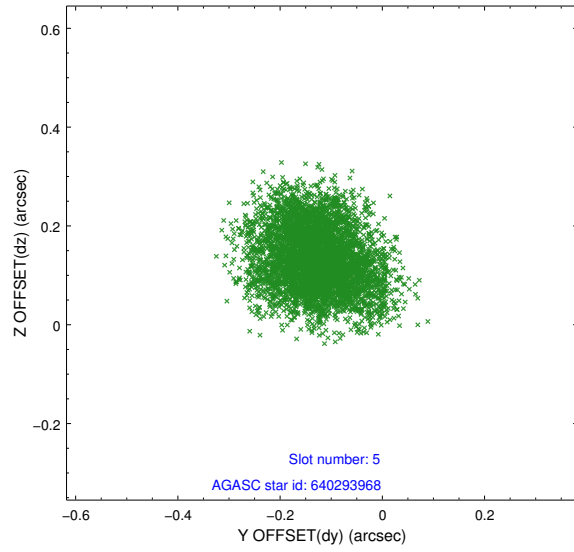
2.4.1 Slot 3



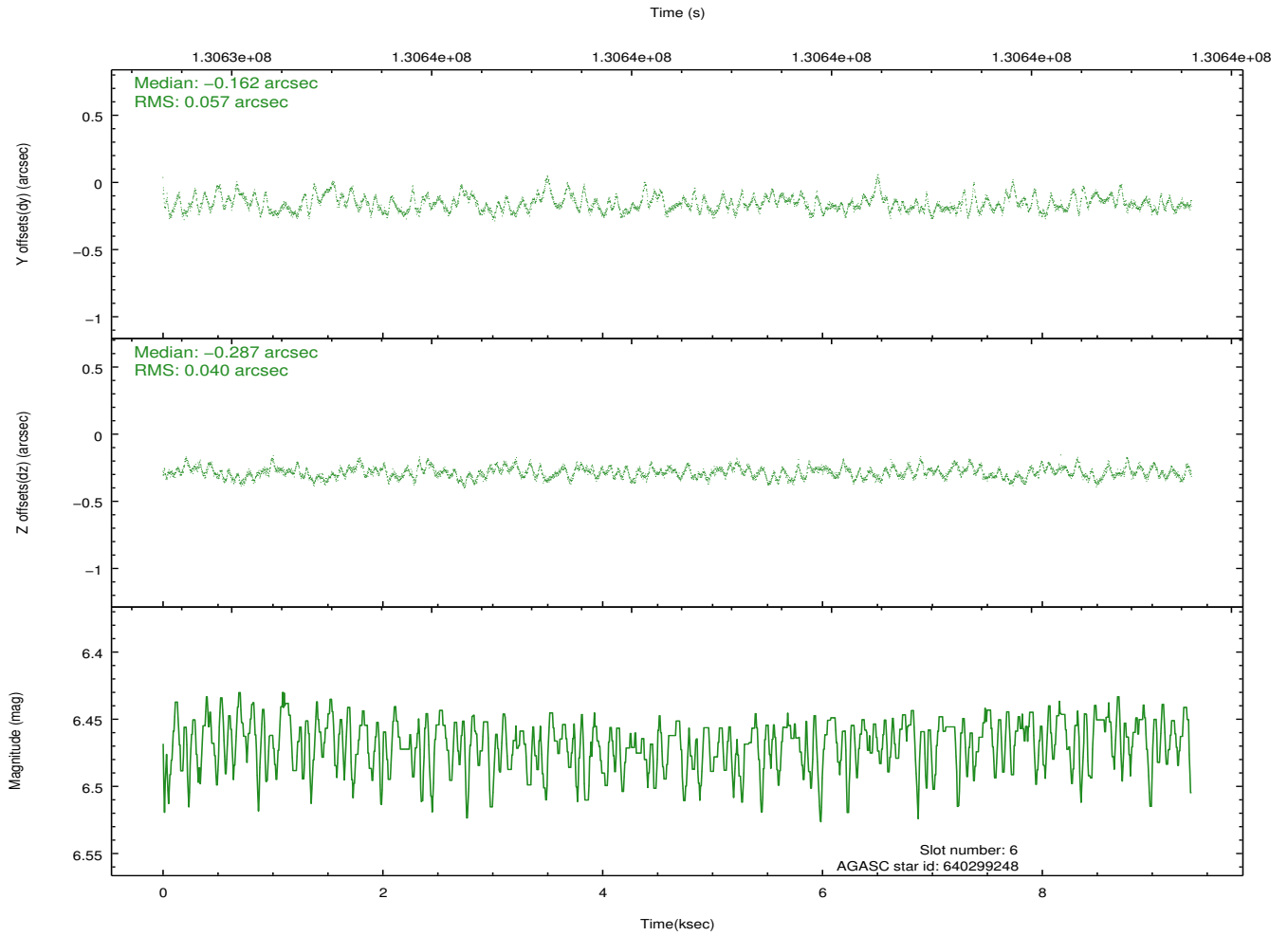
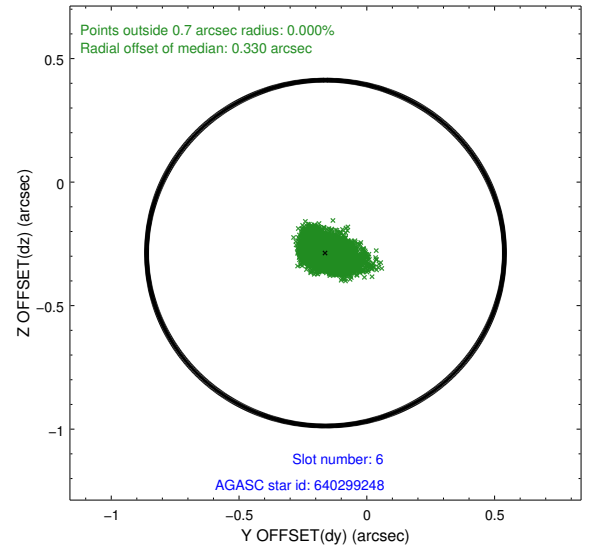
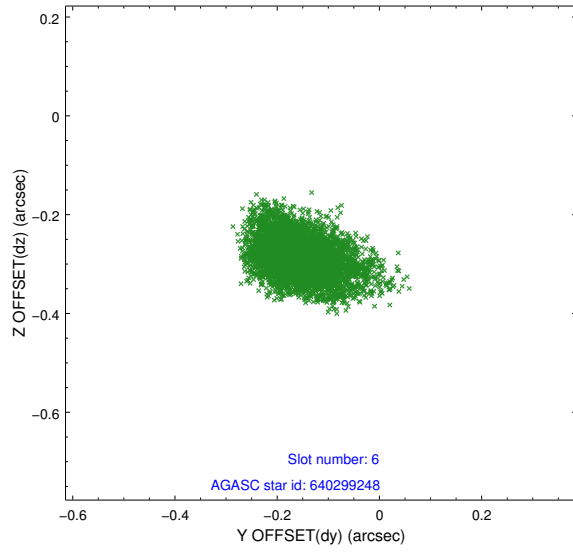
2.4.2 Slot 4



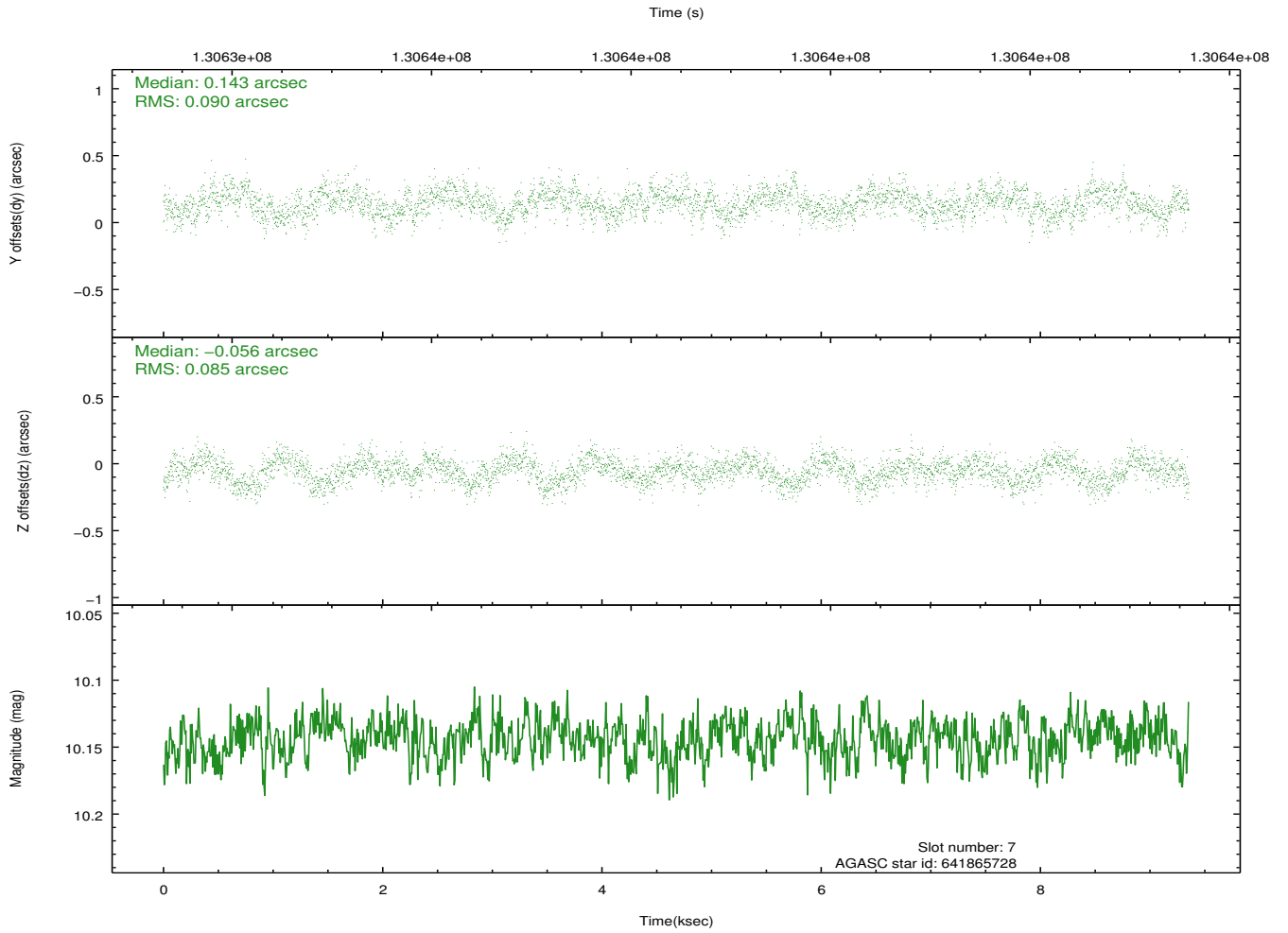
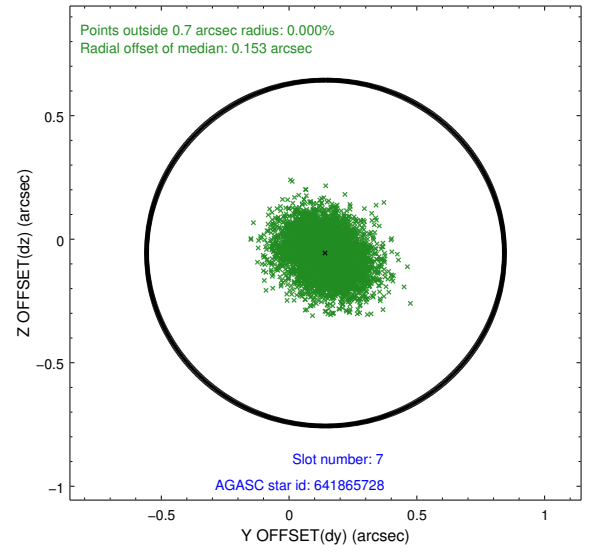
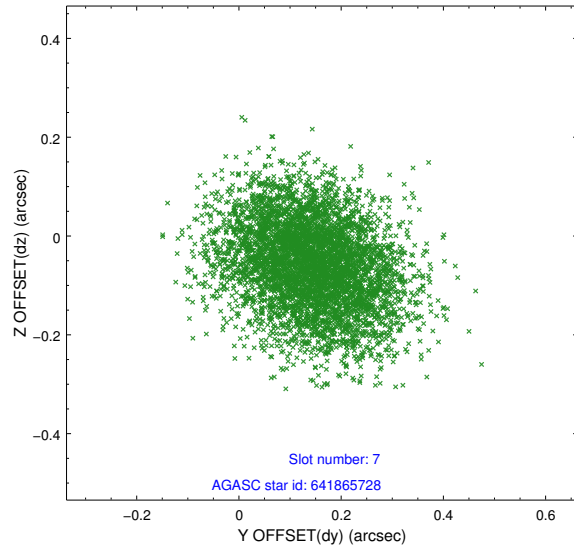
2.4.3 Slot 5



2.4.4 Slot 6

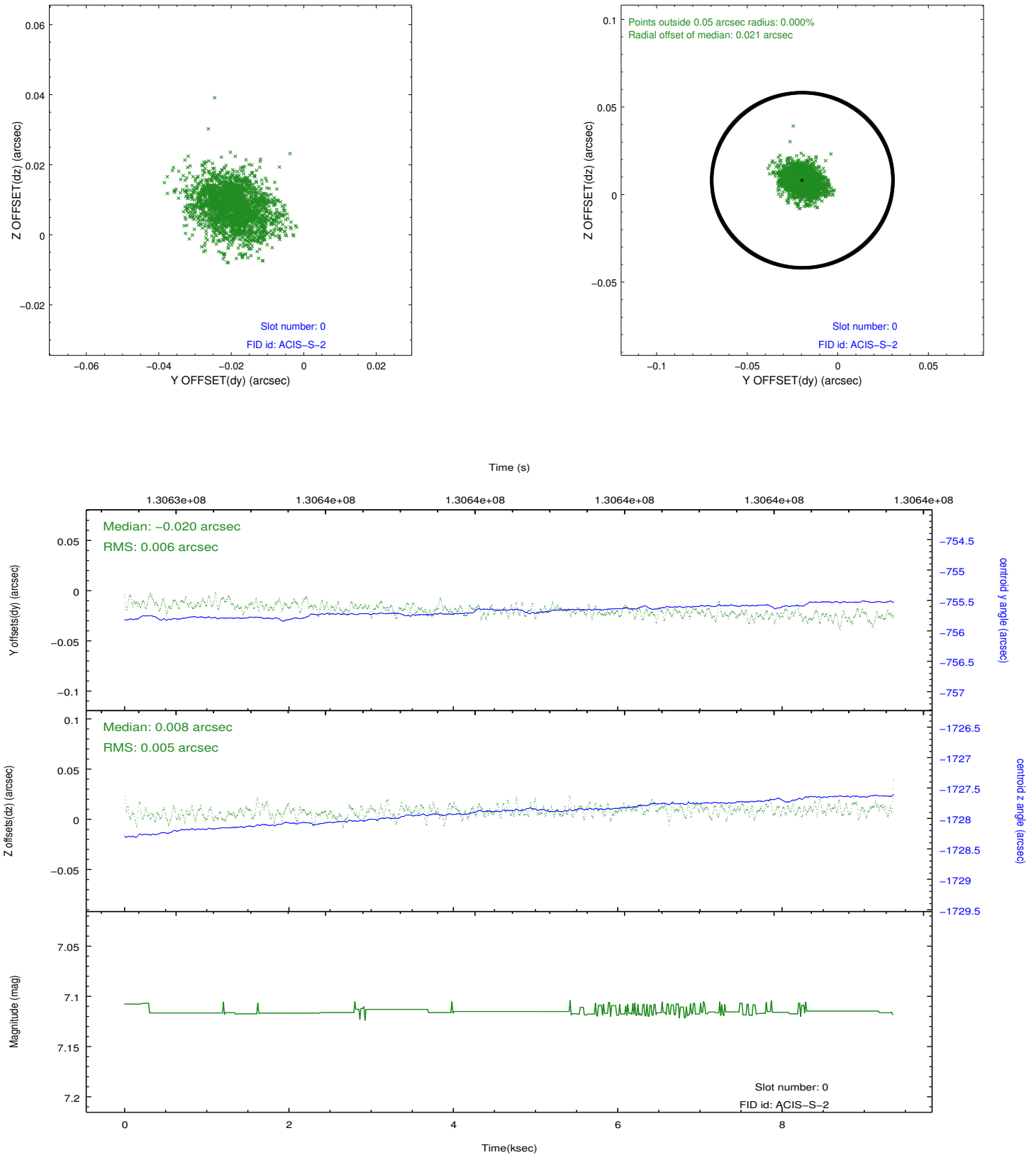


2.4.5 Slot 7

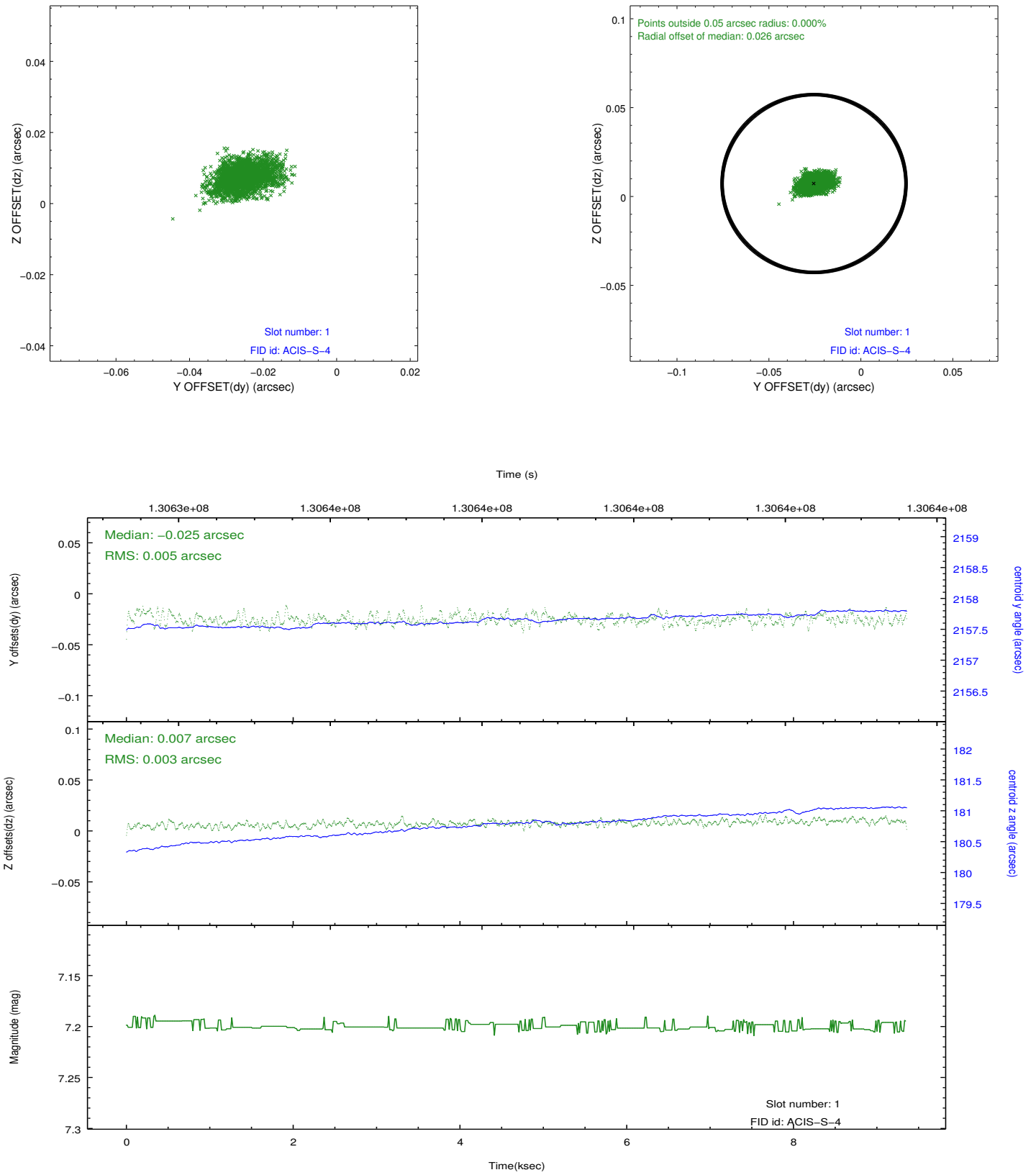


2.5 FID Slots

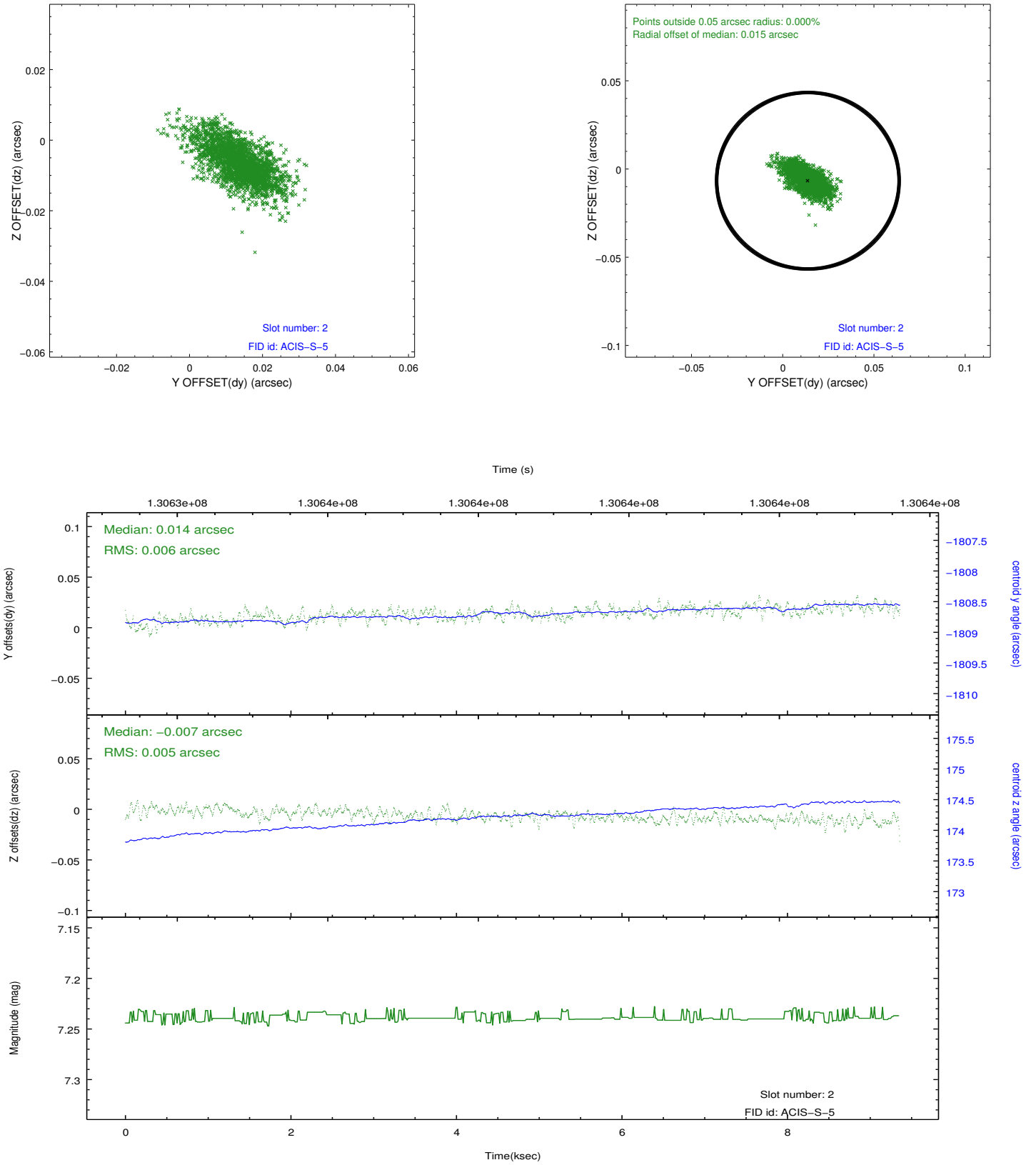
2.5.1 Slot 0



2.5.2 Slot 1



2.5.3 Slot 2



A Summary

A.1 Status

V&V Scientist	Jen Lauer
V&V Date (YYYY-MM-DD)	2012.10.18
V&V Edition	1
V&V Disposition and Status	OK
V&V Charge Time	8.94

A.2 Comments