

V&V Reference Report

L2 ASCDS Version : 7.6.9

Observation 3123 - L2 Version 001
Chandra X-Ray Center

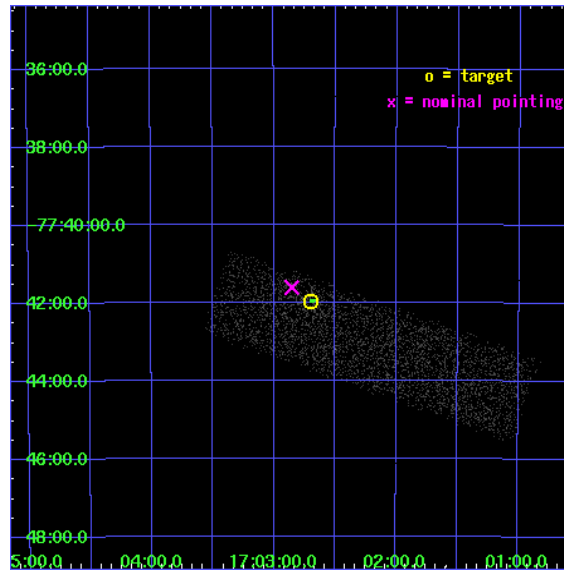
L2 Processing Date : Sep 16 2006

Contents

1	Front	2
2	OBI	3
2.1	OBI	3
2.1.1	Images	3
2.1.2	Bias	3
2.1.3	Parameters	4
2.1.4	Events	4
2.2	Compared Parameters	5
2.3	Aspect	6
2.4	Star Slots	9
2.4.1	Slot 3	9
2.4.2	Slot 4	10
2.4.3	Slot 5	11
2.4.4	Slot 6	12
2.4.5	Slot 7	13
2.5	FID Slots	14
2.5.1	Slot 0	14
2.5.2	Slot 1	15
2.5.3	Slot 2	16
3	Point Sources	17
A	Summary	18
A.1	Status	18
A.2	Comments	18

1 Front

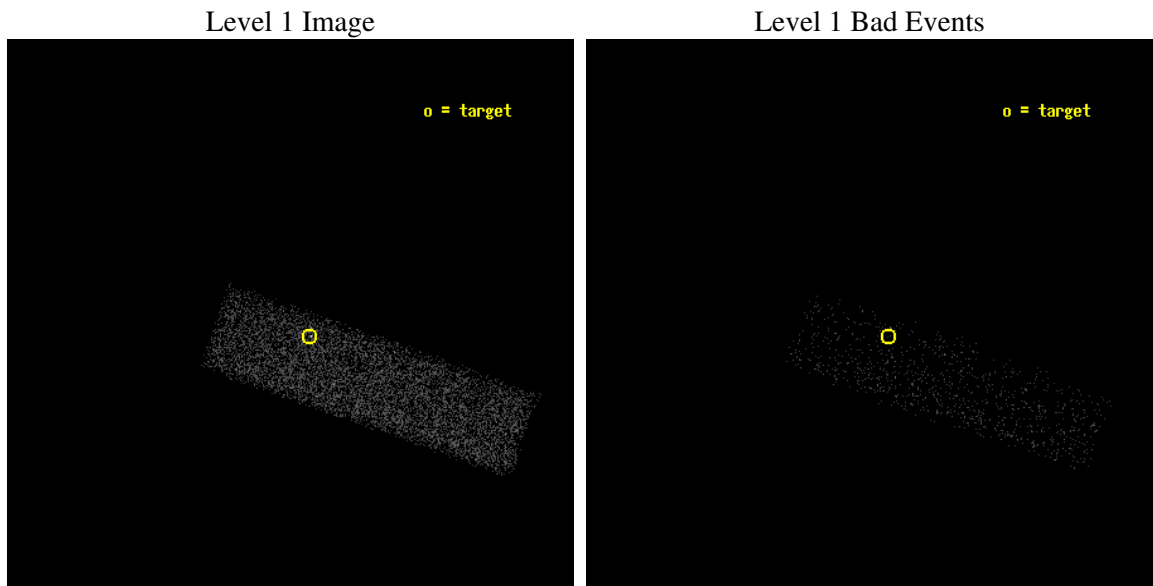
seq_num	700562
obs_id	3123
title	A COMPLETE SURVEY FOR X-RAY EMISSION FROM RADIO JETS
observer	Dr. Herman Marshall
object	1655-776
dtcycle	0
cycle	P
ra_targ	255.675
dec_targ	-77.69925
ra_nom	255.71337497525
dec_nom	-77.693508310655
roll_nom	19.376531507119
revision	2
ontime	5169.600077033
livetime	4917.3405089252
ontime7	5169.600077033
l2events	4479



2 OBI

2.1 OBI

2.1.1 Images



2.1.2 Bias

Chip 7



2.1.3 Parameters

obi_num	0
ascdsver	7.6.9
caldbver	3.2.3
date	2006-09-16T19:12:09
revision	2

sched_exp_time	5000.000000
ontime	5915.811091423
ontime7	5915.811091423
l1events	12051

2.1.4 Events

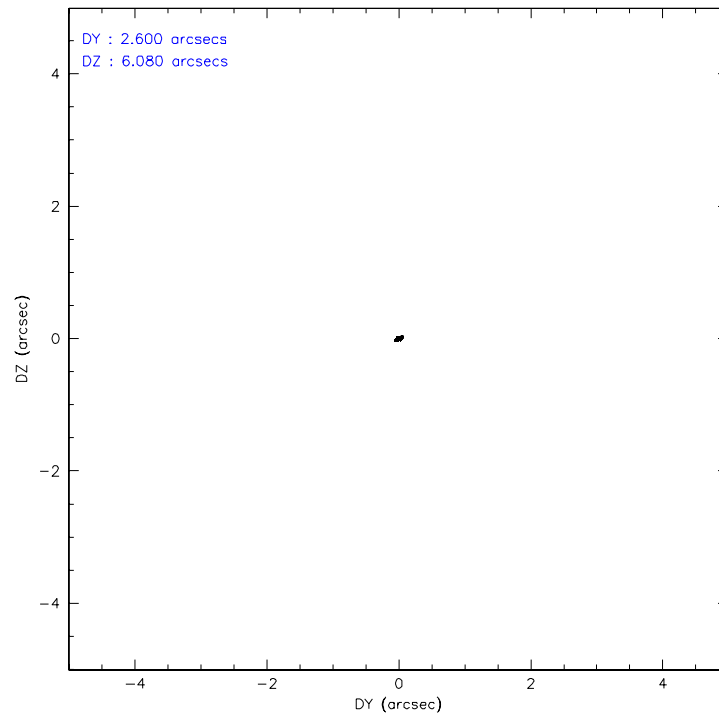
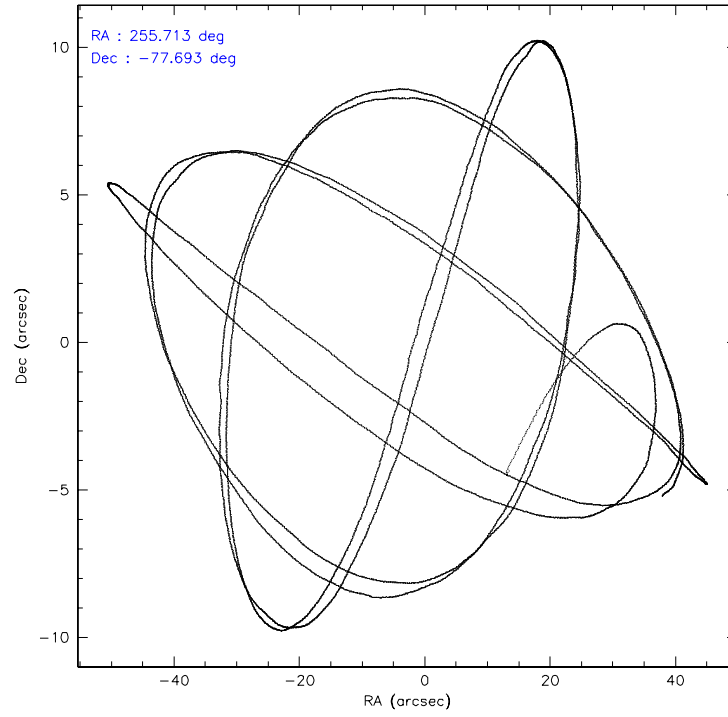
	ccd 7
level 1 events	12051
rejected events	7455
rejected %	61%

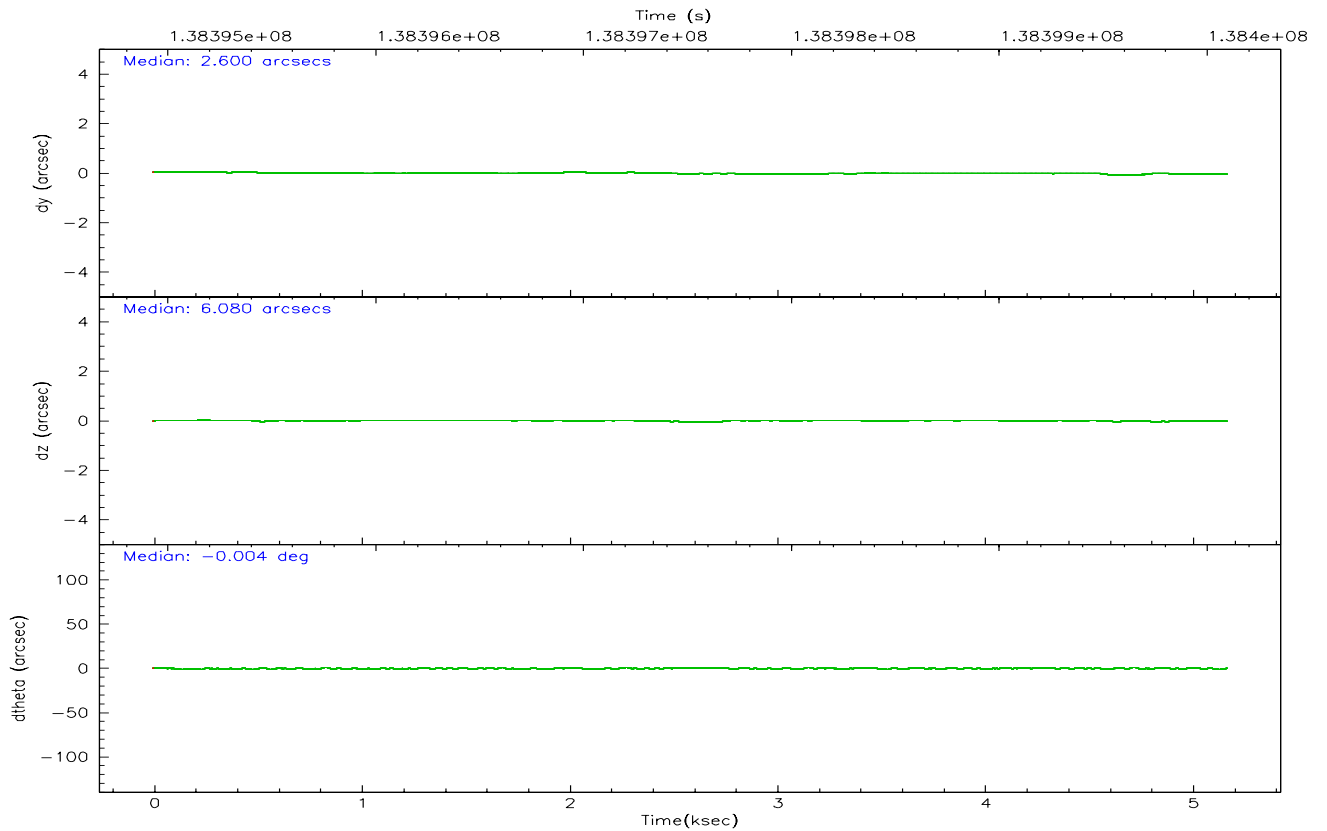
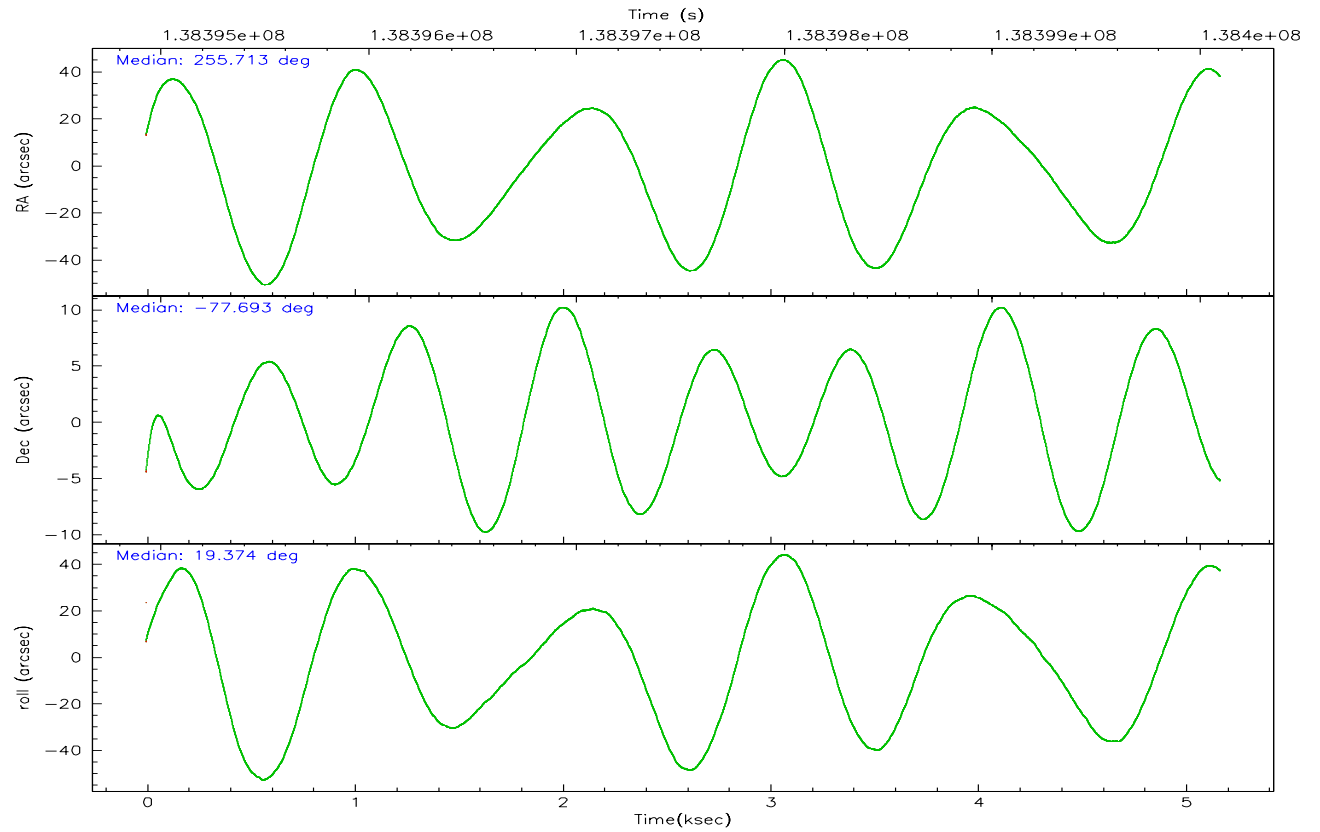
	ccd 7
grade 0 events	436
	3%
grade 1 events	13
	0%
grade 2 events	1162
	9%
grade 3 events	505
	4%
grade 4 events	469
	3%
grade 5 events	1004
	8%
grade 6 events	2724
	22%
grade 7 events	5738
	47%

2.2 Compared Parameters

Parameter	Planned	Actual	Parameter	Planned	Actual
Instrument	ACIS	ACIS	Obspar format version number	6	6
Detector	ACIS-7	ACIS-7	Obspar file type	PREDICTED	ACTUAL
Grating	NONE	NONE	Obspar update status	NONE	UPDATED
Data mode	FAINT	FAINT	Number of optional ACIS chips dropped	0	0
Observation mode	POINTING	POINTING	On-chip summing requested	N	N
Pointing RA	255.630905	255.7133749752528	Subarray requested	CUSTOM	1/4
Pointing Dec	-77.714380	-77.69350831065479	Subarray start row	1	1
Pointing Roll	19.139316	19.37653150711895	Subarray row count	256	256
SIM focus pos (mm)	-0.684267	-0.6828225247311905	Alternating exposures requested	N	N
SIM defocus (mm)	0	0.001444936568705701	Primary exposure time	0.000000	0.8
SIM translation stage pos (mm)	-178.632523	-178.6370735452349			
SIM translation stage offset (mm)	-11.5	-11.49544903777291			
Observation start time	138395091.184000	138394087.94188			
Observation start date	2002-05-21T19:03:47	2002-05-21T18:48:07			
Observation end time	138400091.184000	138400586.95465			
Observation end date	2002-05-21T20:27:07	2002-05-21T20:36:26			
Read mode	TIMED	TIMED			

2.3 Aspect



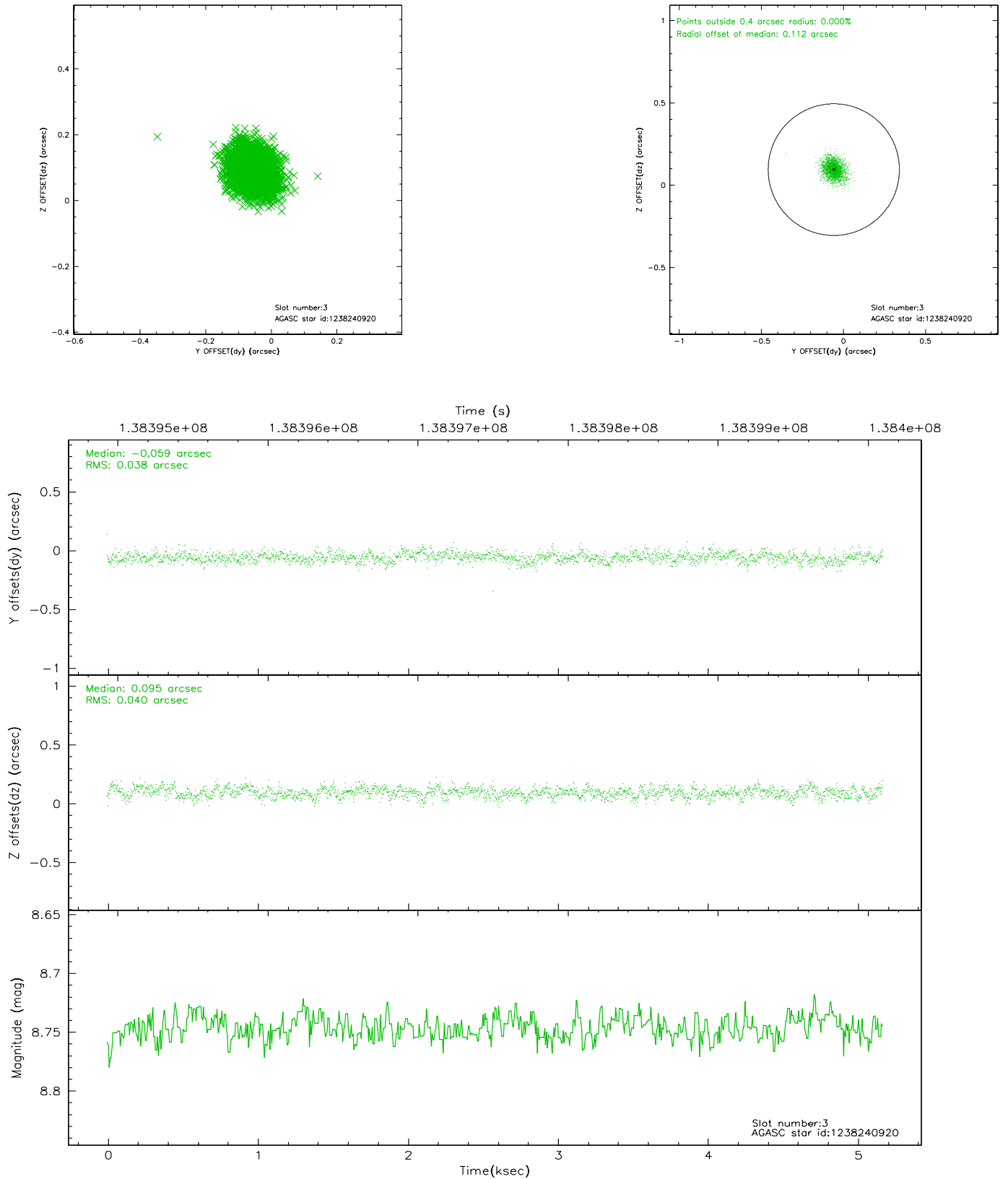


Slot Statistics

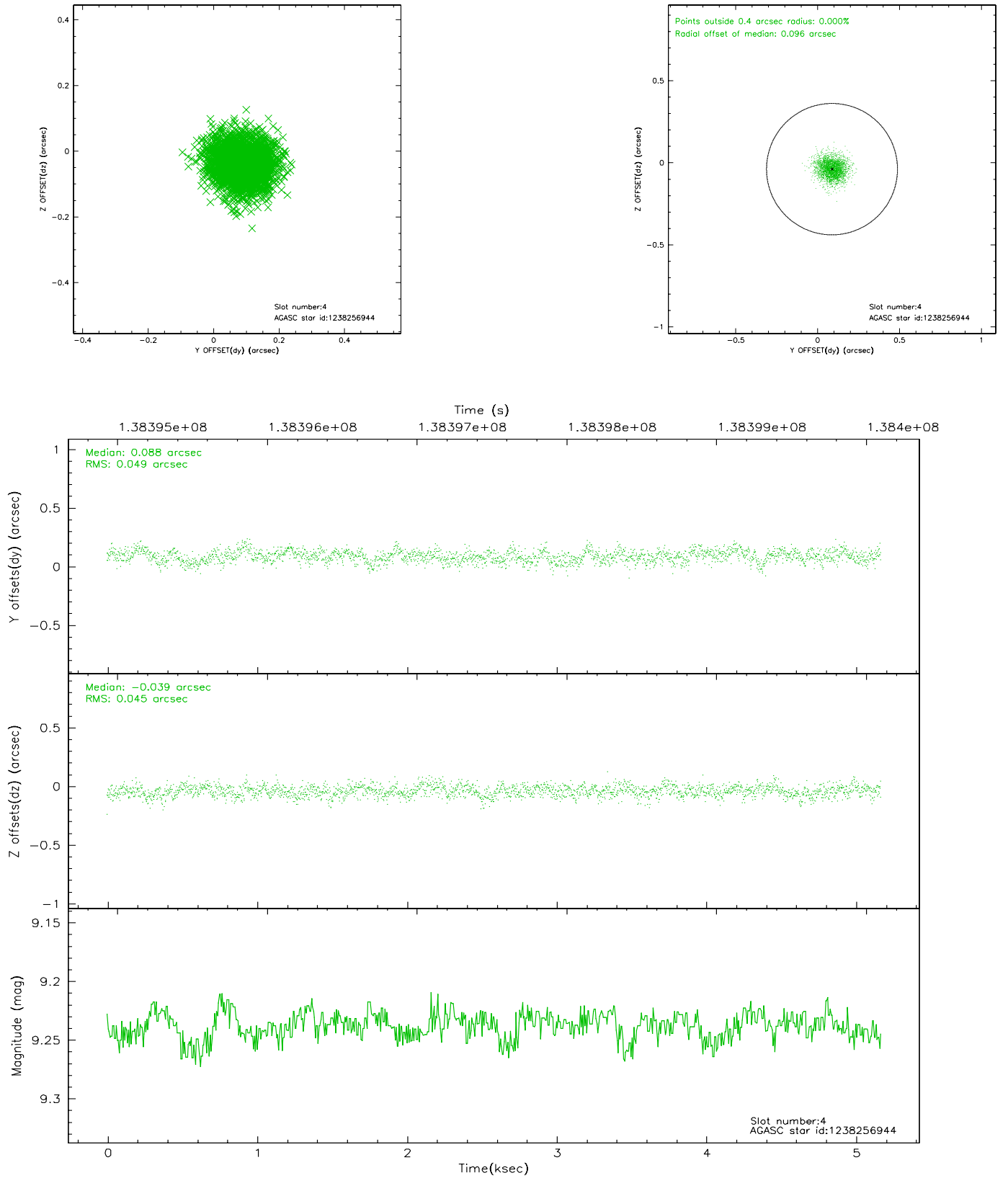
slot	status	id	mag	n_pts	med_dy	med_dz	dr1	dr2	ra	dec	mean_y	mean_z
0	FID	ACIS-S-2	7.09	1262	-0.040	-0.318	0.007	0.011	0.000000	0.000000	-754.43	-1964.17
1	FID	ACIS-S-4	7.17	1262	-0.039	0.104	0.005	0.009	0.000000	0.000000	2158.33	-56.70
2	FID	ACIS-S-5	7.23	1262	0.048	0.221	0.006	0.010	0.000000	0.000000	-1805.66	-61.55
3	GUIDE	1238240920	8.75	2523	-0.059	0.095	0.058	0.096	257.760269	-77.880928	1313.97	-1121.93
4	GUIDE	1238256944	9.24	2522	0.088	-0.039	0.071	0.117	253.367395	-78.022926	-1971.36	-527.02
5	GUIDE	1238245072	8.55	2523	-0.026	-0.144	0.055	0.087	257.282784	-77.529721	1424.24	189.18
6	GUIDE	1238240344	9.61	2518	0.143	0.086	0.086	0.139	253.242711	-77.938711	-1972.68	-209.15
7	GUIDE	1238249376	9.46	2518	-0.149	0.005	0.092	0.152	257.616752	-77.259420	2016.51	1004.79

2.4 Star Slots

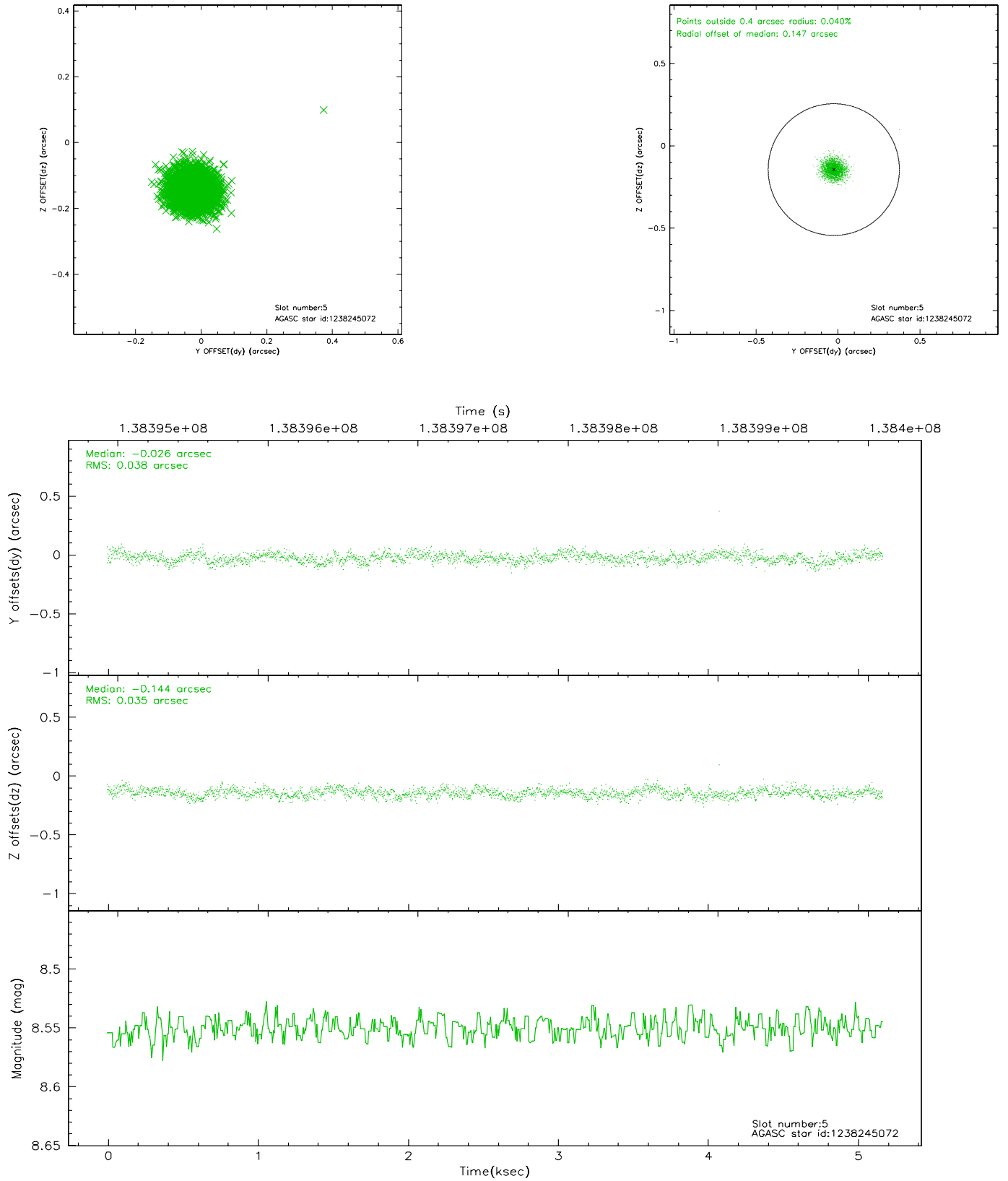
2.4.1 Slot 3



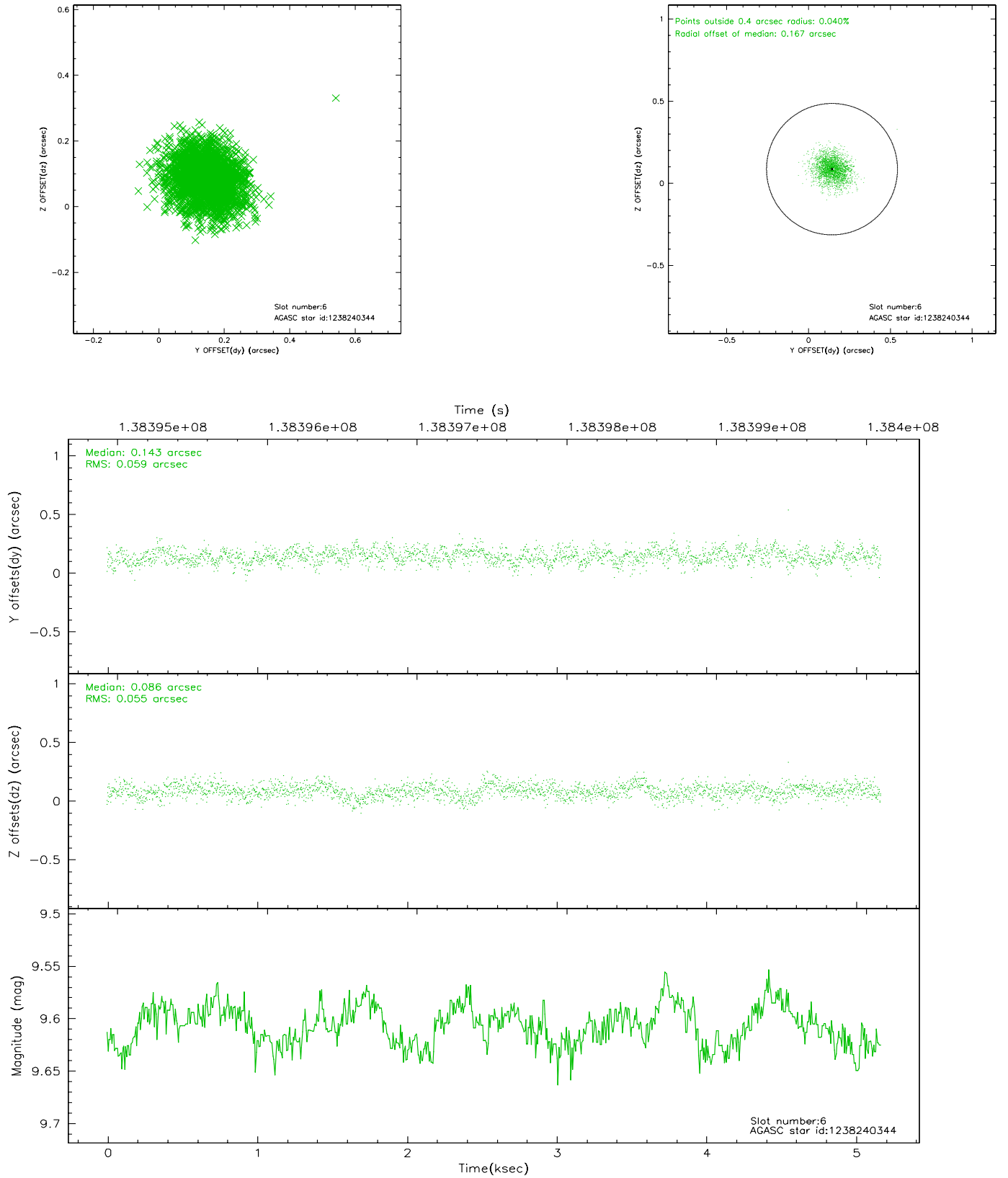
2.4.2 Slot 4



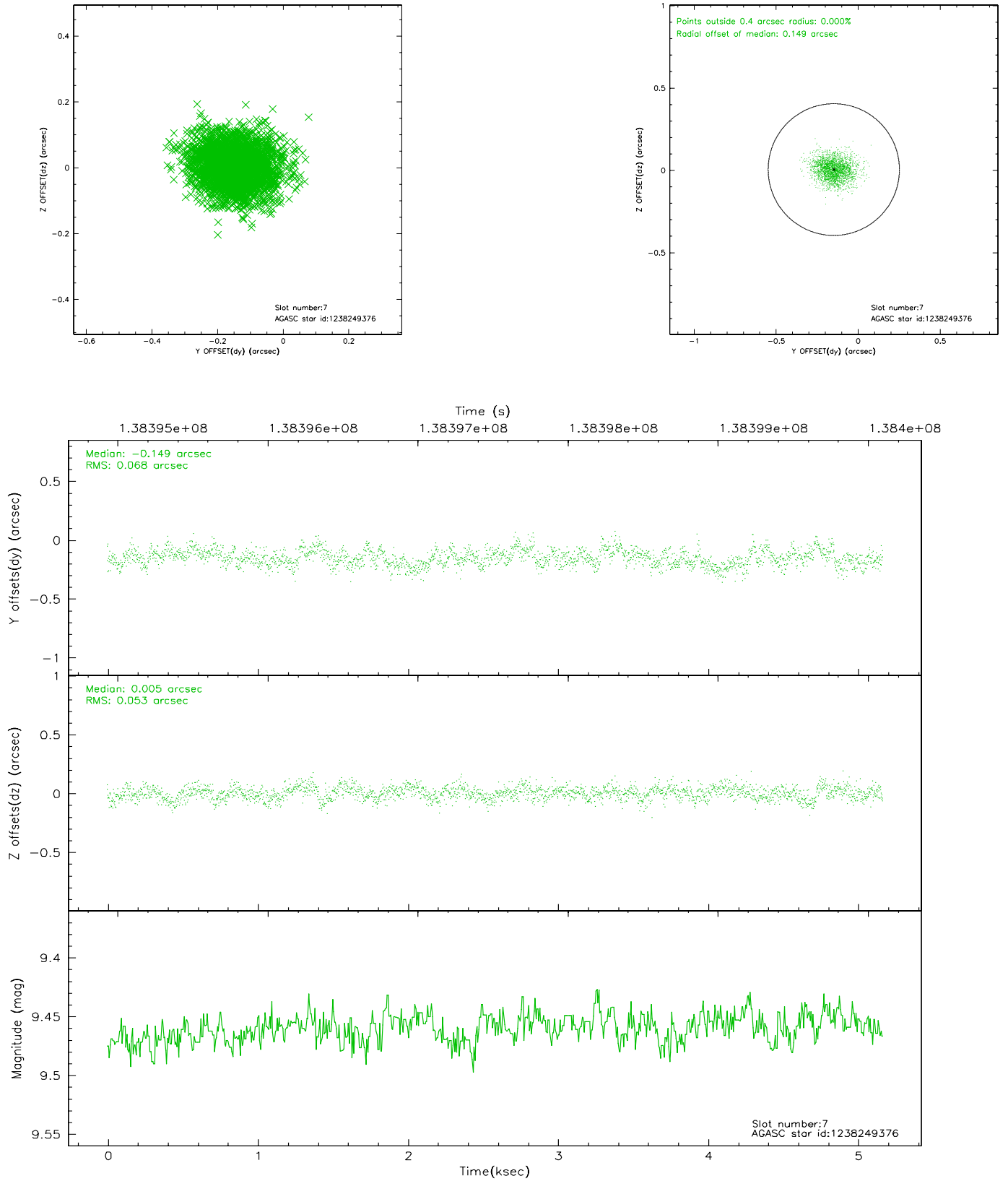
2.4.3 Slot 5



2.4.4 Slot 6

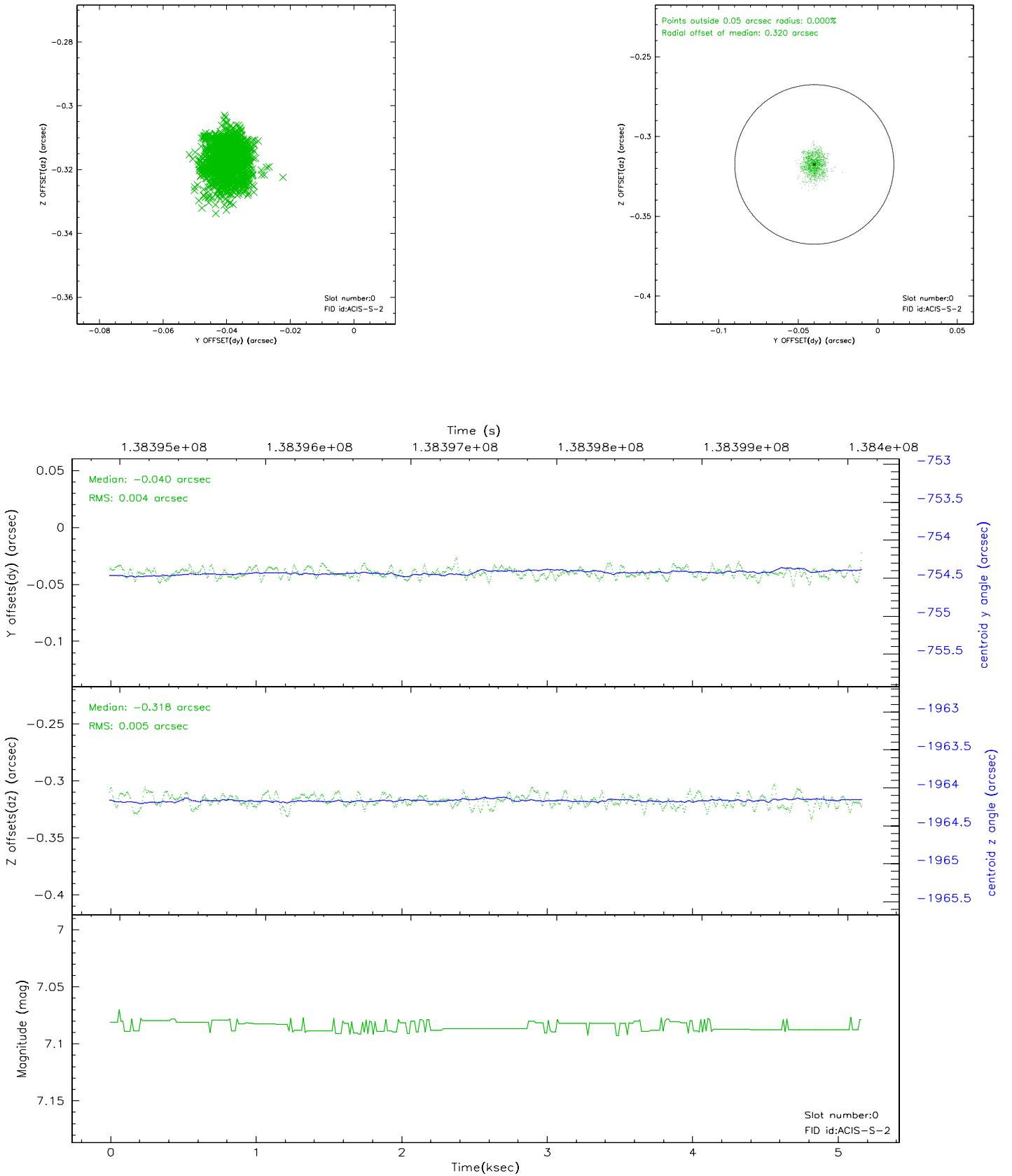


2.4.5 Slot 7

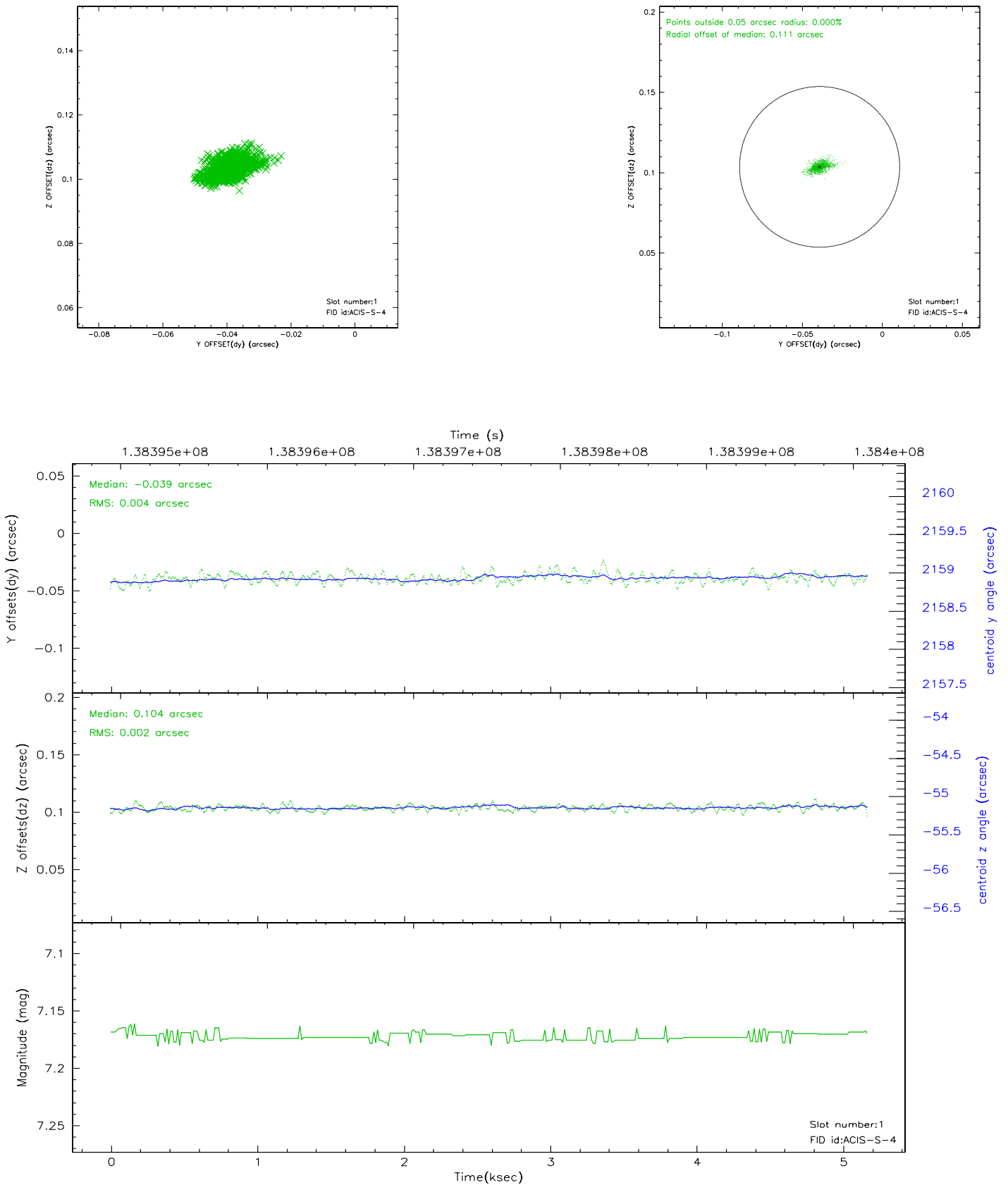


2.5 FID Slots

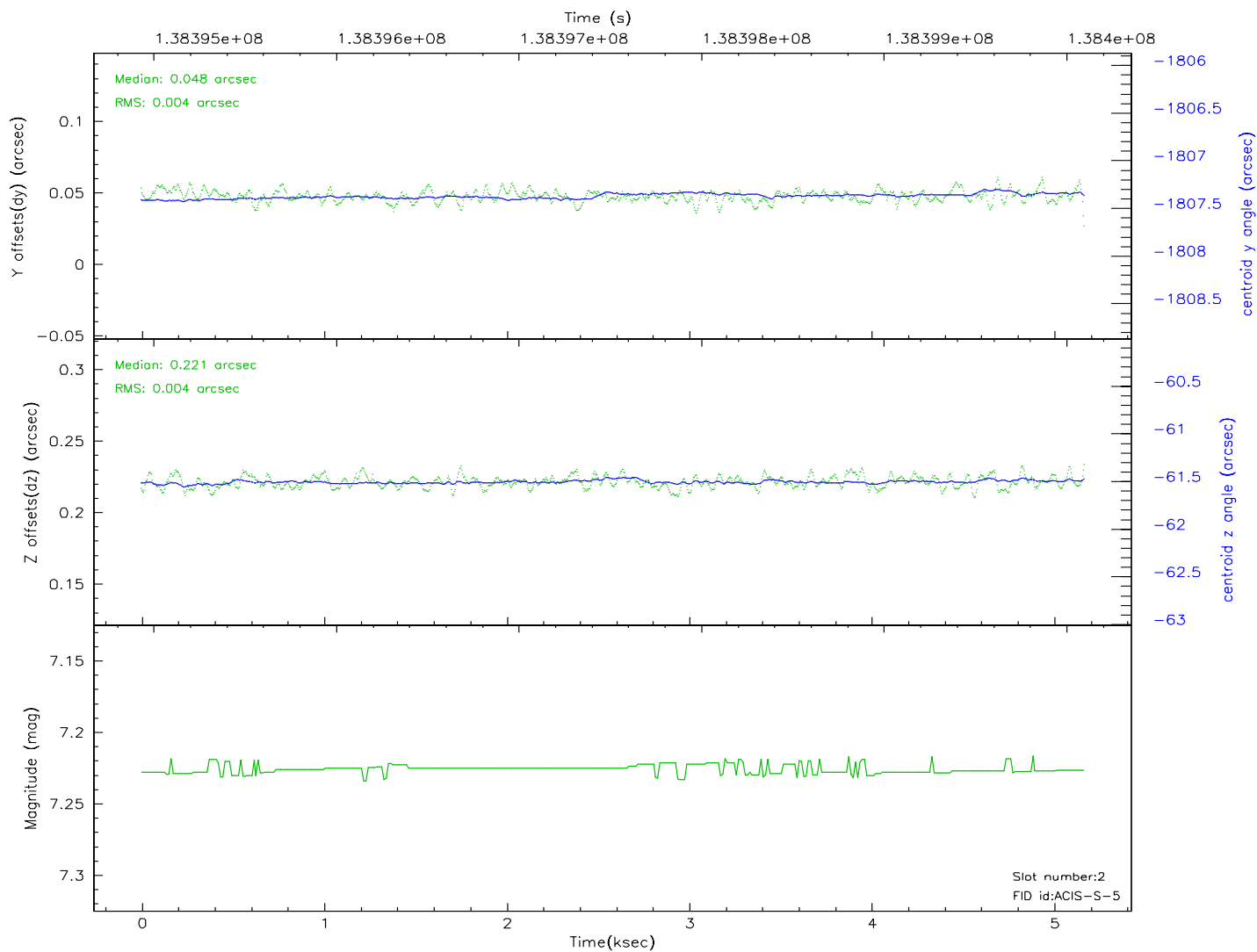
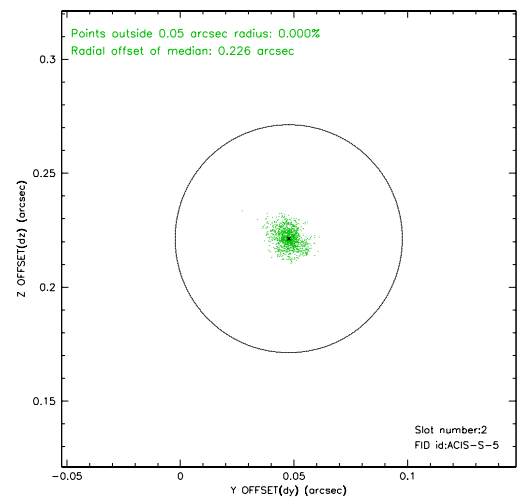
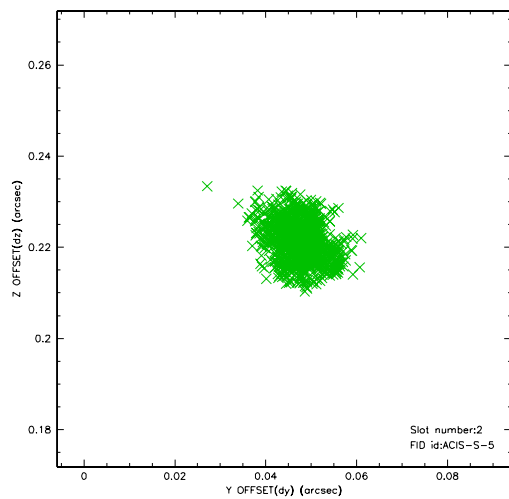
2.5.1 Slot 0



2.5.2 Slot 1



2.5.3 Slot 2



3 Point Sources

A Summary

A.1 Status

V&V Scientist	Jen Lauer
V&V Date (YYYY-MM-DD)	2006.09.18
V&V Edition	1
V&V Disposition and Status	OK
V&V Charge Time	5.169

A.2 Comments

Roll preference met.