

# V&V Reference Report

## L2 ASCDS Version : 7.6.9

Observation 3098 - L2 Version 001  
Chandra X-Ray Center

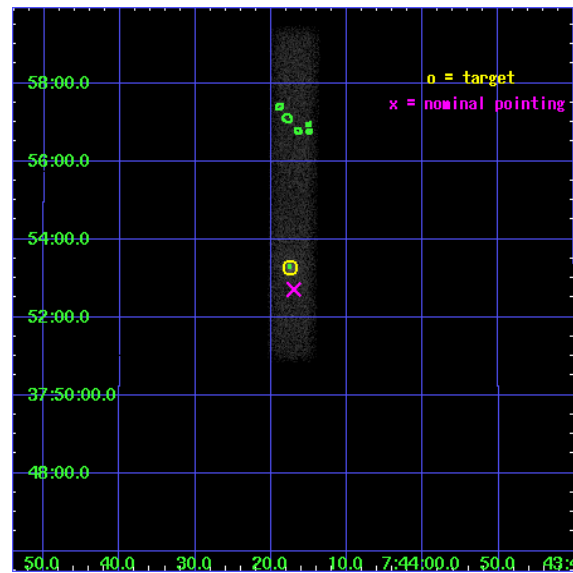
L2 Processing Date : Sep 16 2006

## Contents

<b>1</b>	<b>Front</b>	<b>2</b>
<b>2</b>	<b>OBI</b>	<b>3</b>
2.1	OBI . . . . .	3
2.1.1	Images . . . . .	3
2.1.2	Bias . . . . .	3
2.1.3	Parameters . . . . .	4
2.1.4	Events . . . . .	4
2.2	Compared Parameters . . . . .	5
2.3	Aspect . . . . .	6
2.4	Star Slots . . . . .	9
2.4.1	Slot 3 . . . . .	9
2.4.2	Slot 4 . . . . .	10
2.4.3	Slot 5 . . . . .	11
2.4.4	Slot 6 . . . . .	12
2.4.5	Slot 7 . . . . .	13
2.5	FID Slots . . . . .	14
2.5.1	Slot 0 . . . . .	14
2.5.2	Slot 1 . . . . .	15
2.5.3	Slot 2 . . . . .	16
<b>3</b>	<b>Point Sources</b>	<b>17</b>
<b>A</b>	<b>Summary</b>	<b>18</b>
A.1	Status . . . . .	18
A.2	Comments . . . . .	18

# 1 Front

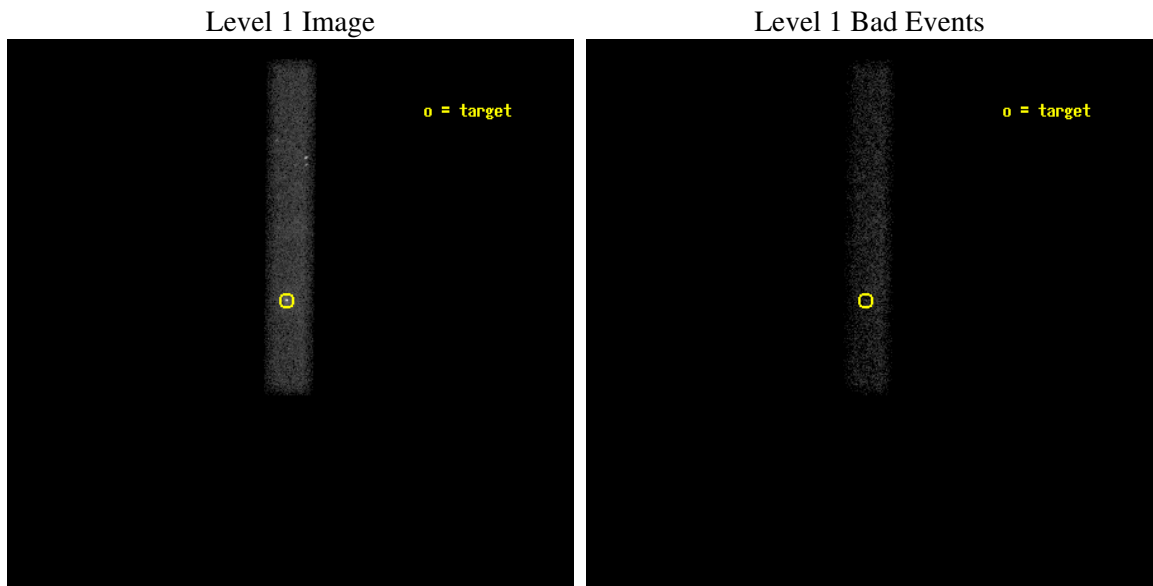
seq_num	700537
obs_id	3098
title	X-RAY IMAGING OF GPS AND CSS QUASARS
observer	Dr Aneta Siemiginowska
object	Q0740+380
dtcycle	0
cycle	P
ra_targ	116.072917
dec_targ	37.888083
ra_nom	116.07088230609
dec_nom	37.878516954682
roll_nom	270.57447599782
revision	2
ontime	37969.200565785
livetime	34436.060734432
ontime7	37969.200565785
l2events	25101



## 2 OBI

### 2.1 OBI

#### 2.1.1 Images



#### 2.1.2 Bias

Chip 7



### 2.1.3 Parameters

obi_num	1
ascdsver	7.6.9
caldbver	3.2.3
date	2006-09-16T14:36:05
revision	2

sched_exp_time	37815.018000
ontime	38963.622739732
ontime7	38963.622739732
l1events	51219

### 2.1.4 Events

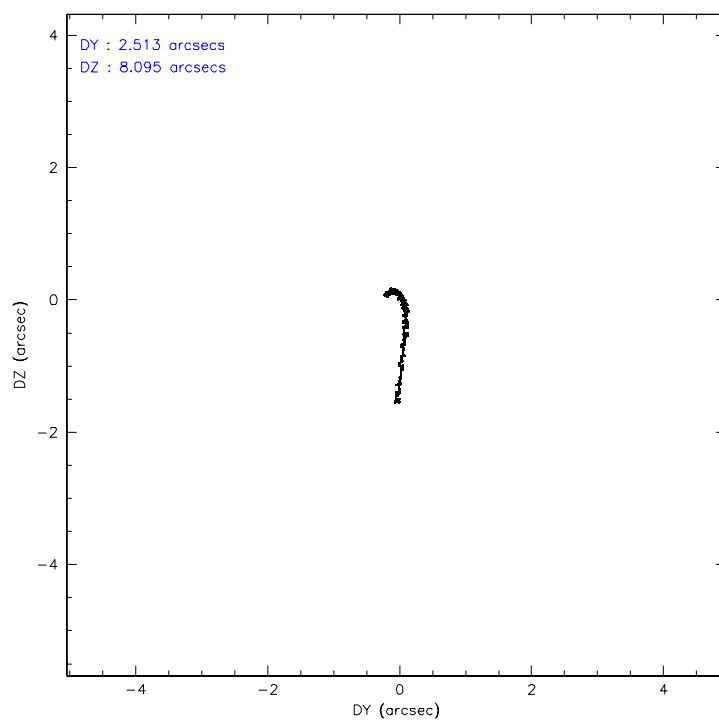
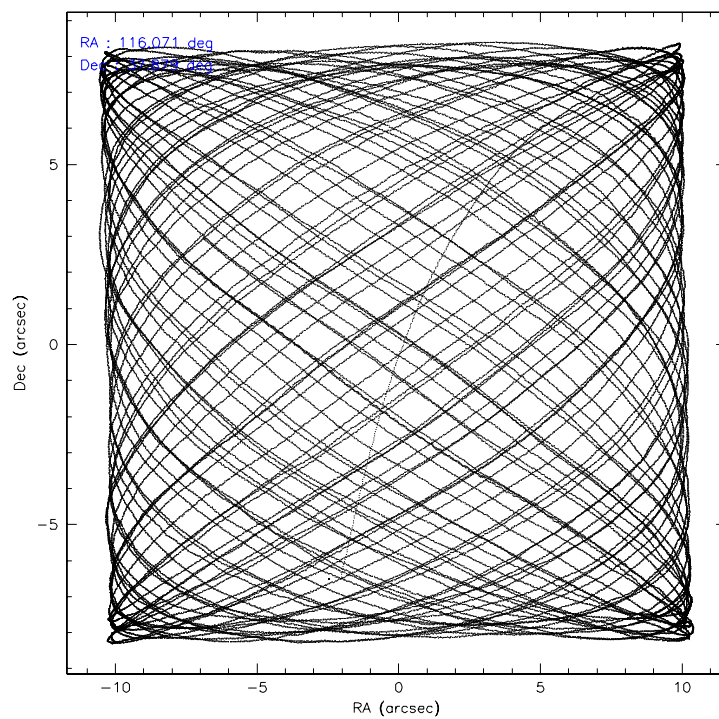
	<b>ccd 7</b>
level 1 events	51219
rejected events	25252
rejected %	49%

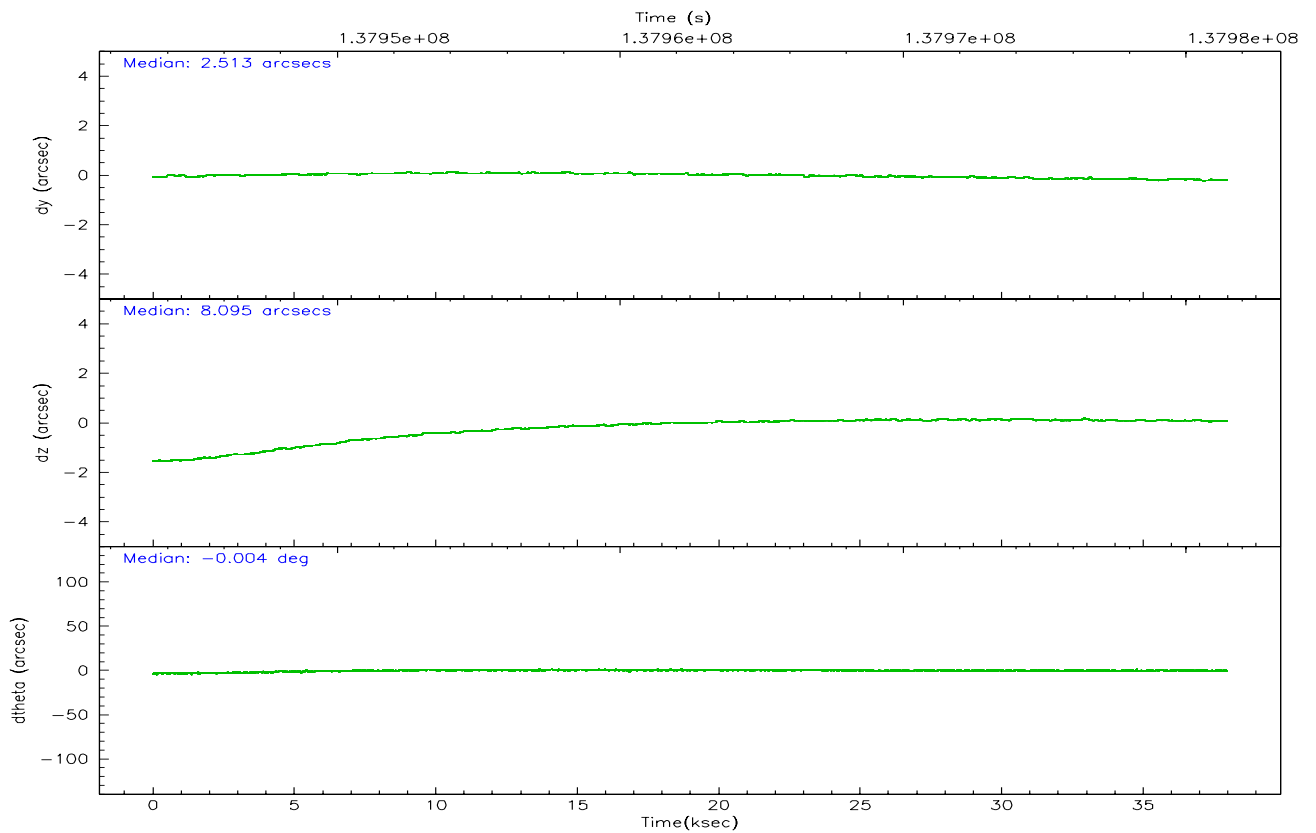
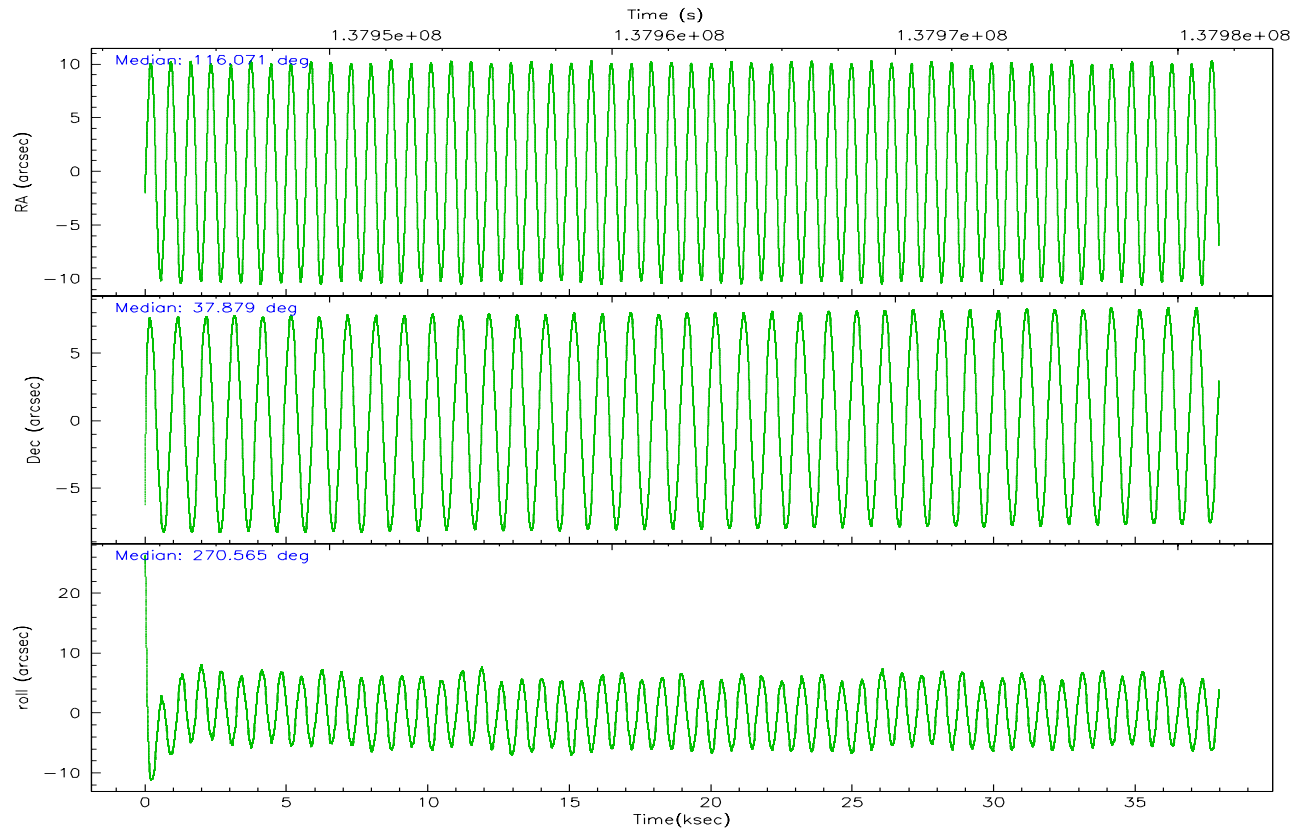
	<b>ccd 7</b>
grade 0 events	3195
	6%
grade 1 events	22
	0%
grade 2 events	5902
	11%
grade 3 events	2694
	5%
grade 4 events	2612
	5%
grade 5 events	3057
	5%
grade 6 events	12049
	23%
grade 7 events	21688
	42%

## 2.2 Compared Parameters

Parameter	Planned	Actual	Parameter	Planned	Actual
Instrument	ACIS	ACIS	Obspar format version number	6	6
Detector	ACIS-7	ACIS-7	Obspar file type	PREDICTED	ACTUAL
Grating	NONE	NONE	Obspar update status	NONE	UPDATED
Data mode	VFAINT	VFAINT	Number of optional ACIS chips dropped	0	0
Observation mode	POINTING	POINTING	On-chip summing requested	N	N
Pointing RA	116.052931	116.0708823060915	Subarray requested	CUSTOM	1/8
Pointing Dec	37.901801	37.87851695468211	Subarray start row	449	449
Pointing Roll	270.428872	270.5744759978222	Subarray row count	128	128
SIM focus pos (mm)	-0.684267	-0.6828225247311905	Alternating exposures requested	N	N
SIM defocus (mm)	0	0.001444936568705701	Primary exposure time	0.000000	0.4
SIM translation stage pos (mm)	-190.132523	-190.1425803651734			
SIM translation stage offset (mm)	0	0.01005778216563158			
Observation start time	137943648.184000	137942500.08595			
Observation start date	2002-05-16T13:39:44	2002-05-16T13:21:40			
Observation end time	137981463.184000	137981777.57505			
Observation end date	2002-05-17T00:09:59	2002-05-17T00:16:17			
Read mode	TIMED	TIMED			

## 2.3 Aspect





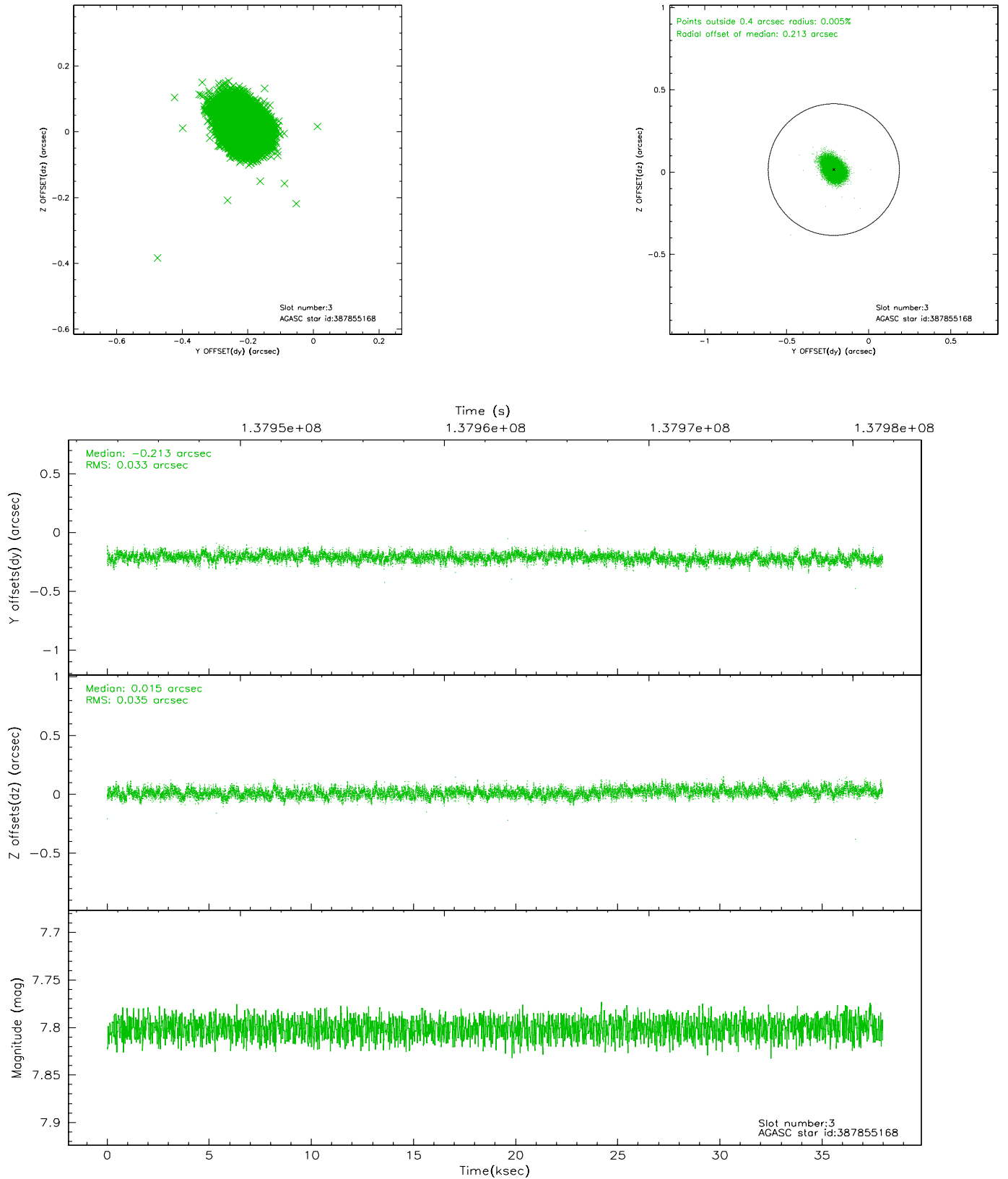
### Slot Statistics

slot	status	id	mag	n_pts	med_dy	med_dz	dr1	dr2	ra	dec	mean_y	mean_z
0	FID	ACIS-S-2	7.11	9261	-0.002	0.025	0.015	0.023	0.000000	0.000000	-755.13	-1728.95
1	FID	ACIS-S-4	7.20	9261	-0.083	-0.006	0.016	0.024	0.000000	0.000000	2158.06	179.47
2	FID	ACIS-S-5	7.24	9260	0.053	-0.008	0.013	0.021	0.000000	0.000000	-1807.88	173.18
3	GUIDE	387855168	7.80	18523	-0.213	0.015	0.051	0.084	116.658195	38.272157	-1325.37	1720.04
4	GUIDE	323224152	7.87	18515	0.061	-0.127	0.054	0.092	115.423366	37.430032	1680.31	-1812.57
5	GUIDE	387849992	8.94	18513	0.299	0.035	0.081	0.132	116.439680	37.644416	933.91	1095.21
6	GUIDE	323231976	9.10	18516	-0.018	0.004	0.083	0.139	115.260772	37.395366	1798.23	-2279.23
7	GUIDE	387849672	9.68	18502	-0.129	0.078	0.116	0.207	116.543370	38.237989	-1202.62	1395.19

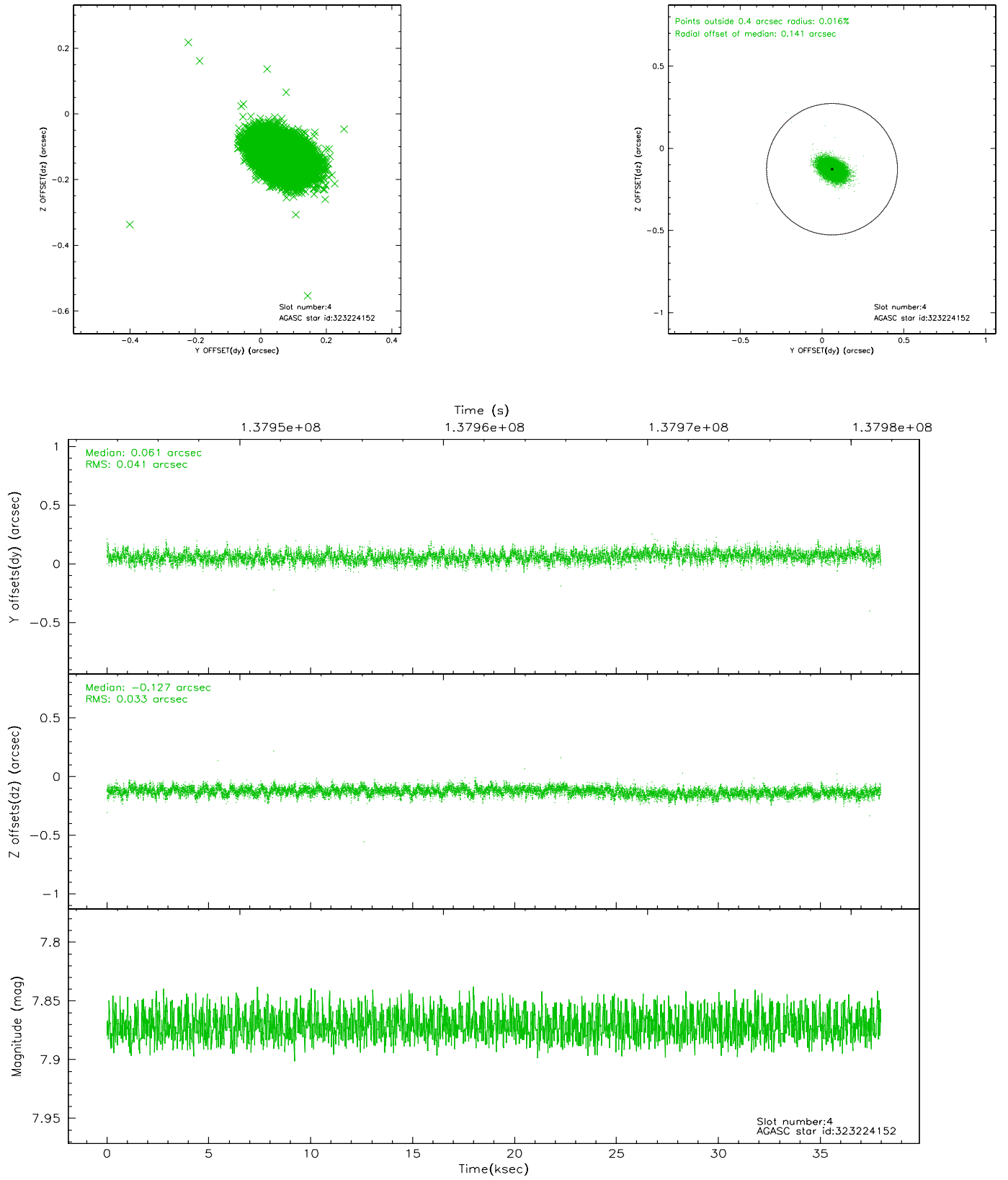


## 2.4 Star Slots

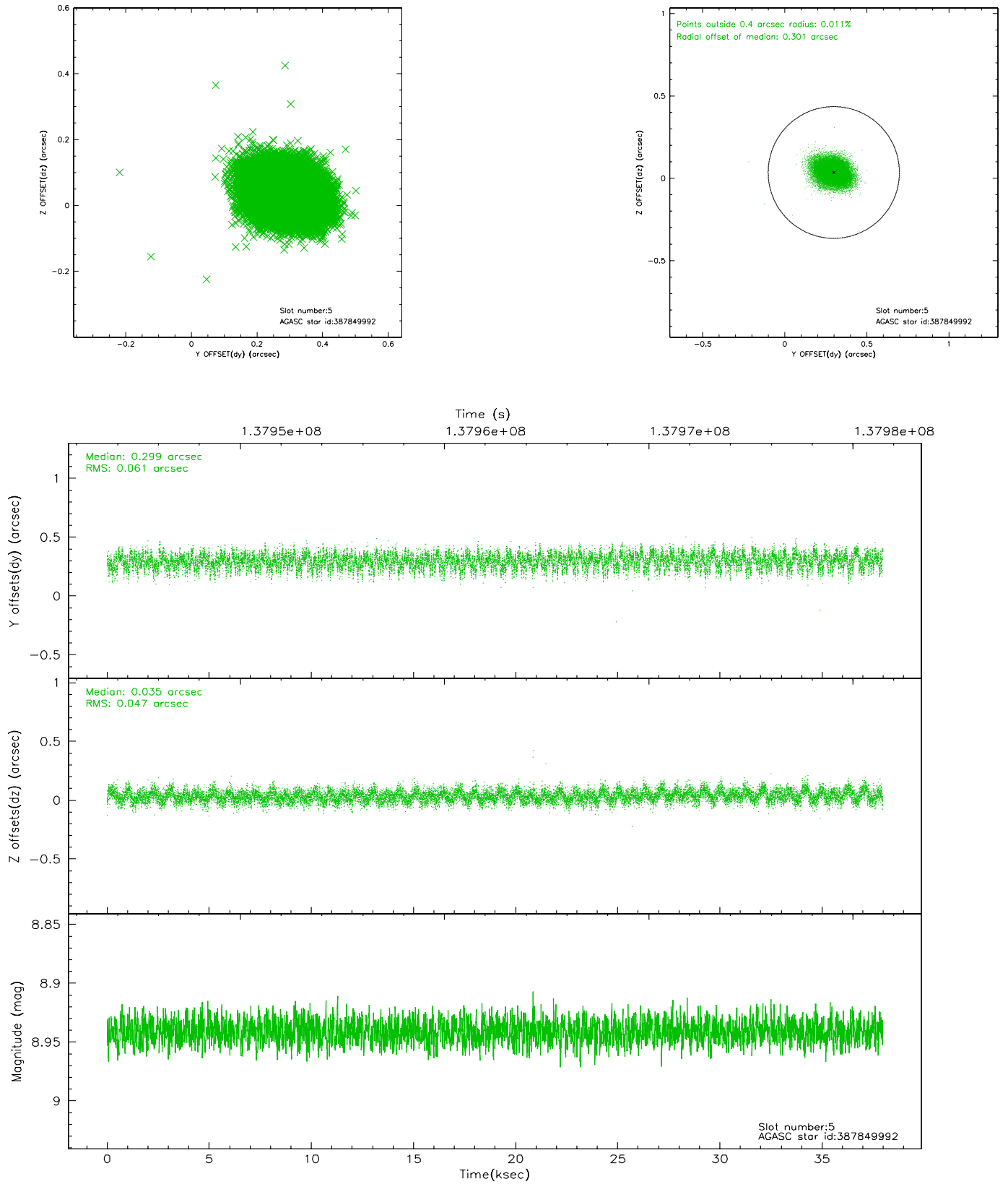
### 2.4.1 Slot 3



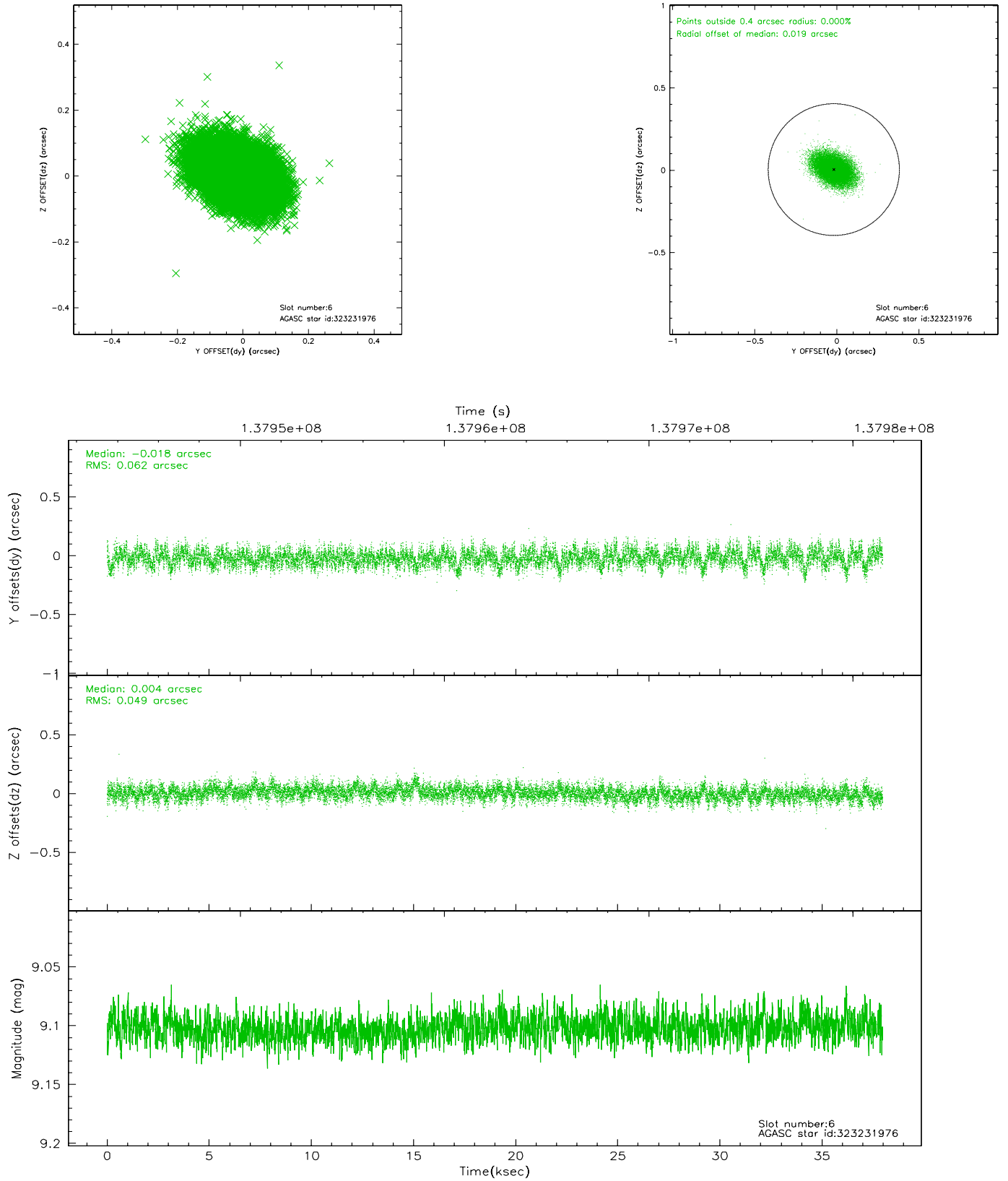
## 2.4.2 Slot 4



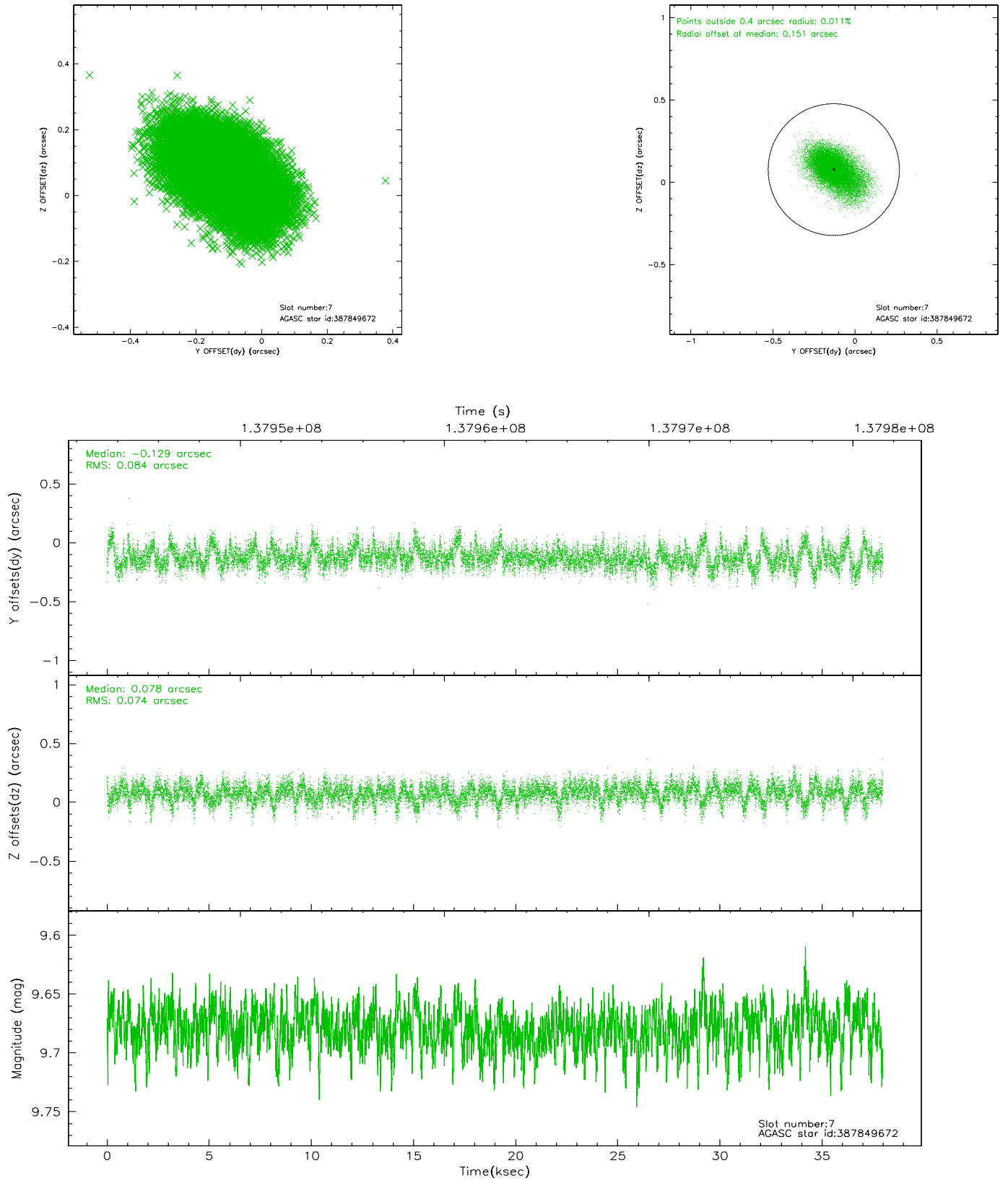
### 2.4.3 Slot 5



## 2.4.4 Slot 6

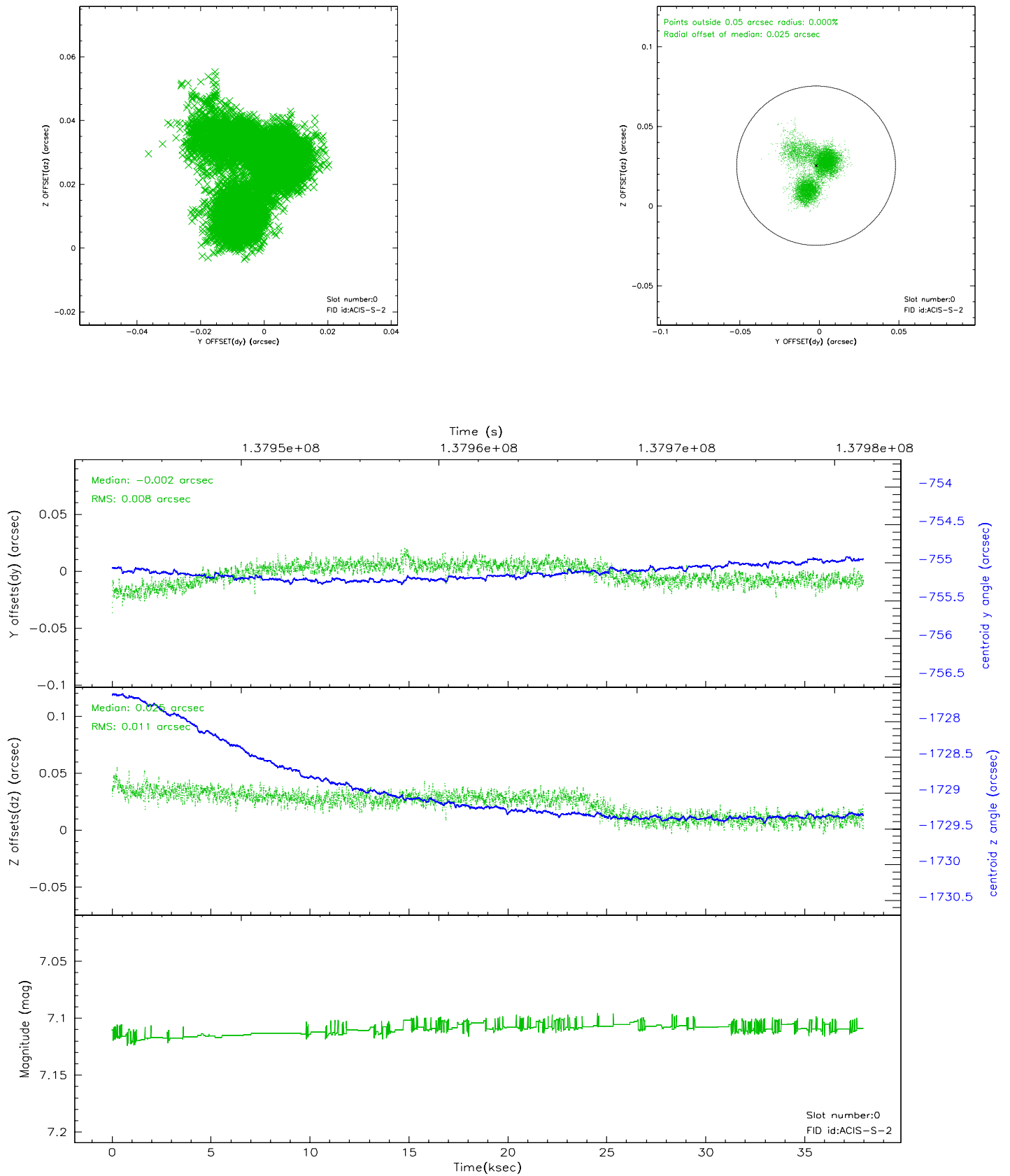


## 2.4.5 Slot 7

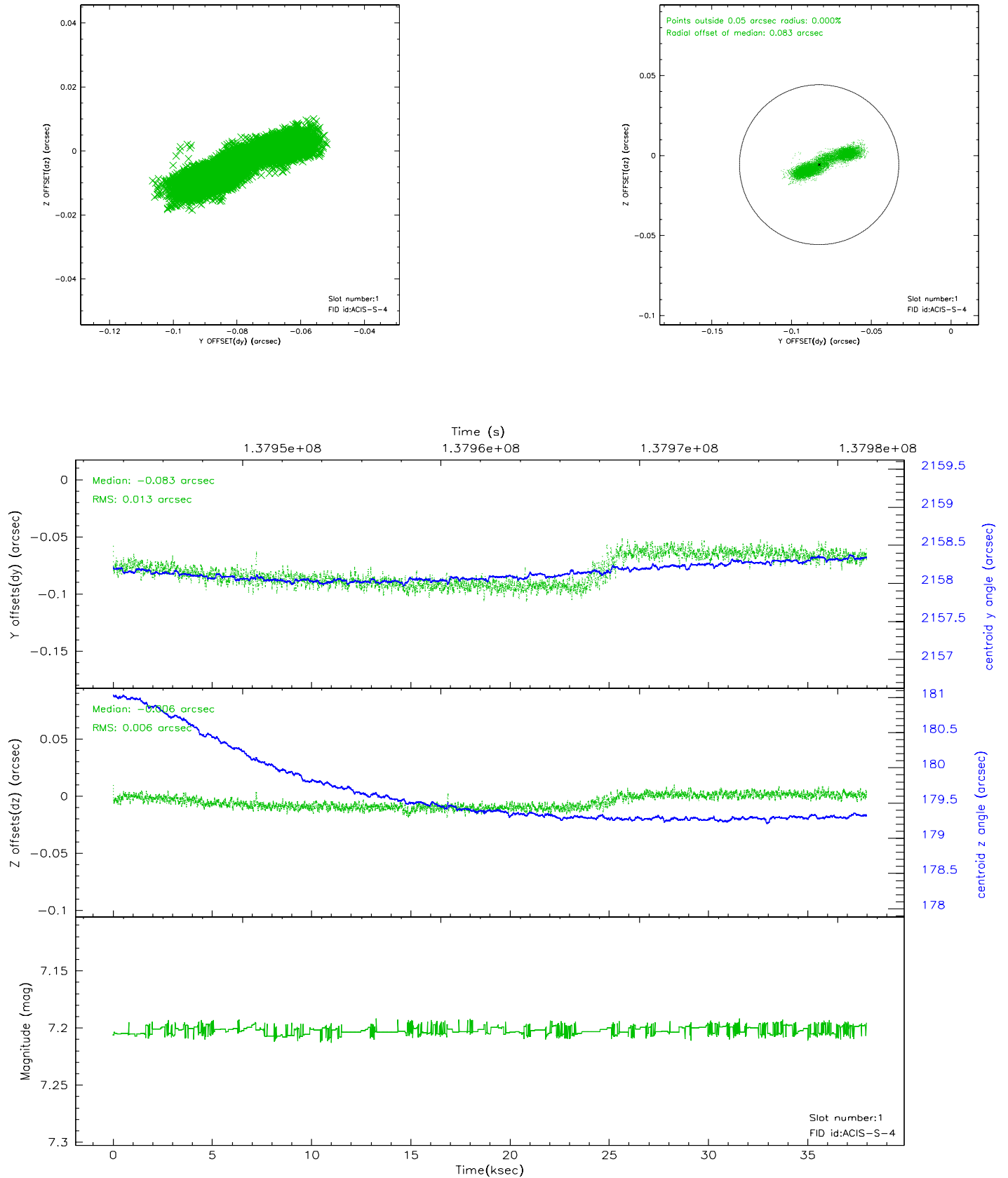


## 2.5 FID Slots

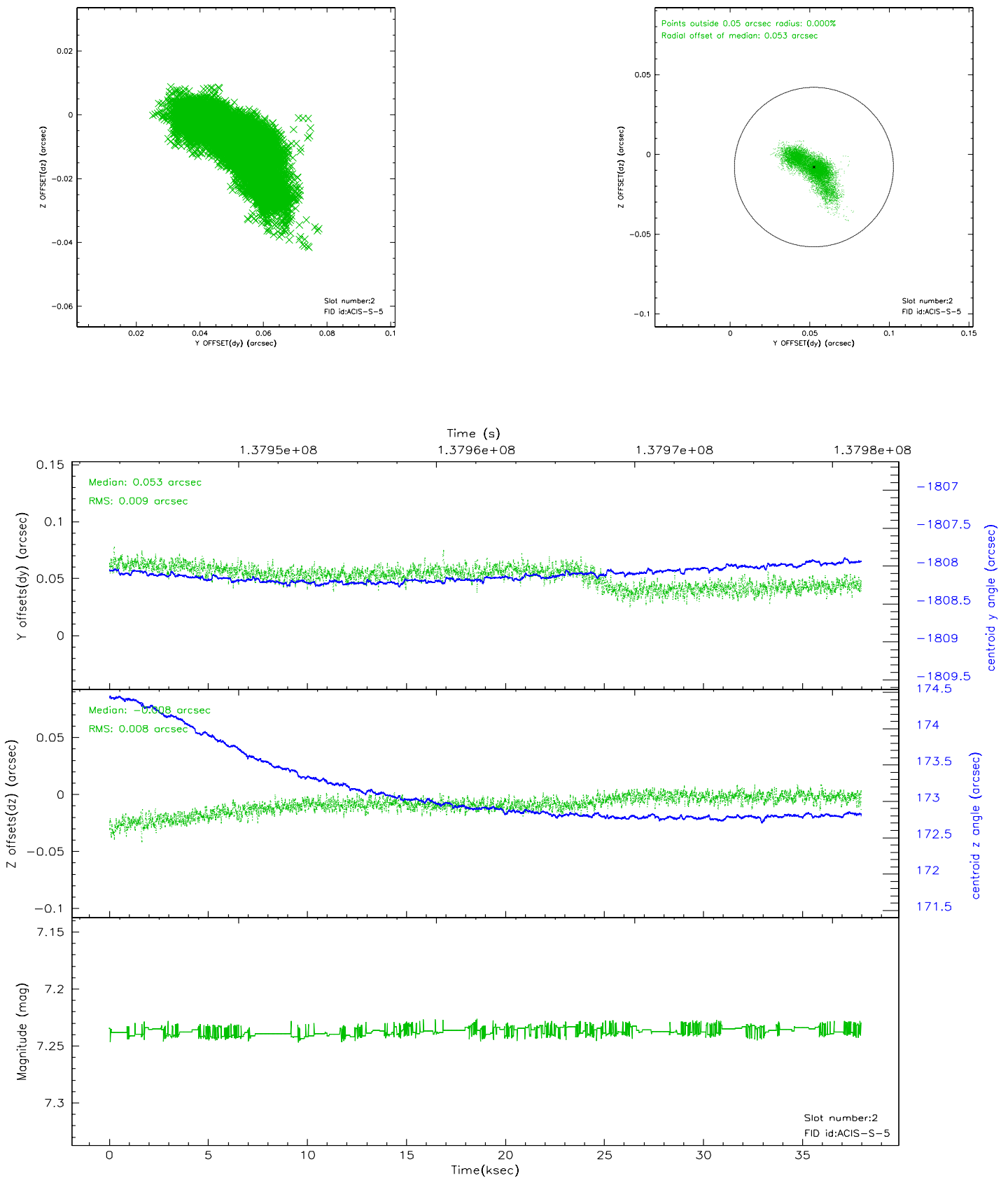
### 2.5.1 Slot 0



## 2.5.2 Slot 1



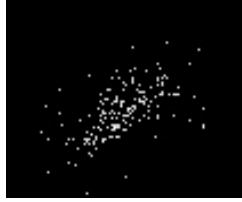
### 2.5.3 Slot 2





### 3 Point Sources

4.07 arcmin



# A Summary

## A.1 Status

V&V Scientist	Jen Lauer
V&V Date (YYYY-MM-DD)	2006.09.18
V&V Edition	1
V&V Disposition and Status	OK
V&V Charge Time	37.927

## A.2 Comments

Charge time:

Charge time for this ObsId remains at previous value of 37.927 ks  
although with the current processing charge time would have been 37.97  
ksec.