

V&V Reference Report

L2 ASCDS Version : 7.6.8.1

Observation 3093 - L2 Version 001
Chandra X-Ray Center

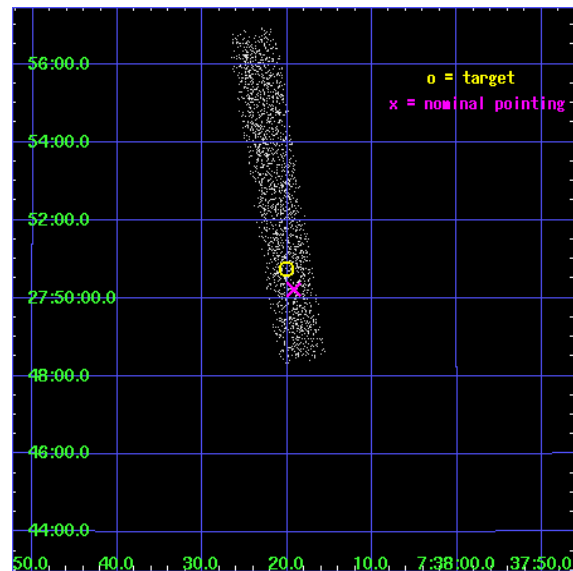
L2 Processing Date : Sep 11 2006

Contents

1	Front	2
2	OBI	3
2.1	OBI	3
2.1.1	Images	3
2.1.2	Bias	3
2.1.3	Parameters	4
2.1.4	Events	4
2.2	Compared Parameters	5
2.3	Aspect	6
2.4	Star Slots	9
2.4.1	Slot 3	9
2.4.2	Slot 4	10
2.4.3	Slot 5	11
2.4.4	Slot 6	12
2.4.5	Slot 7	13
2.5	FID Slots	14
2.5.1	Slot 0	14
2.5.2	Slot 1	15
2.5.3	Slot 2	16
3	Point Sources	17
A	Summary	18
A.1	Status	18
A.2	Comments	18

1 Front

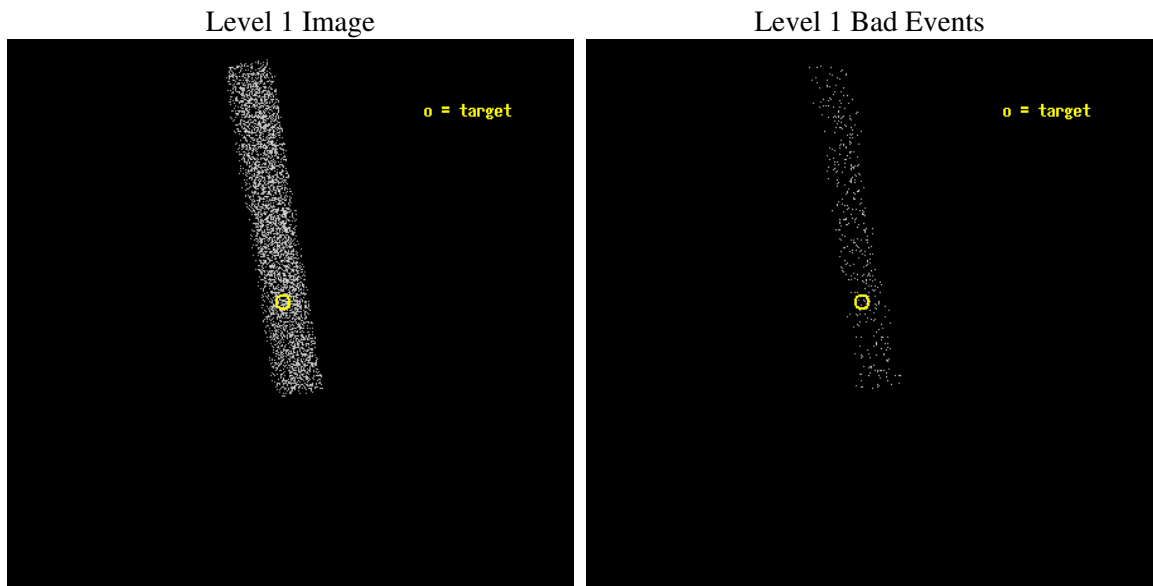
seq_num	700532
obs_id	3093
title	THE X-RAY SPECTRA OF RED QUASARS SELECTED FROM 2MASS AND FIRST
observer	Dr Mark Lacy
object	FTM0738+2750
dtcycle	0
cycle	P
ra_targ	114.58375
dec_targ	27.845972
ra_nom	114.58010836094
dec_nom	27.836910426438
roll_nom	260.92305158845
revision	2
ontime	4408.3590555787
livetime	3998.1489711398
ontime7	4408.3590555787
l2events	2092



2 OBI

2.1 OBI

2.1.1 Images



2.1.2 Bias

Chip 7



2.1.3 Parameters

obi_num	4
ascdsver	7.6.8.1
caldbver	3.2.3
date	2006-09-11T05:52:52
revision	2

sched_exp_time	4000.000000
ontime	4859.7597275674
ontime7	4859.7597275674
l1events	5556

2.1.4 Events

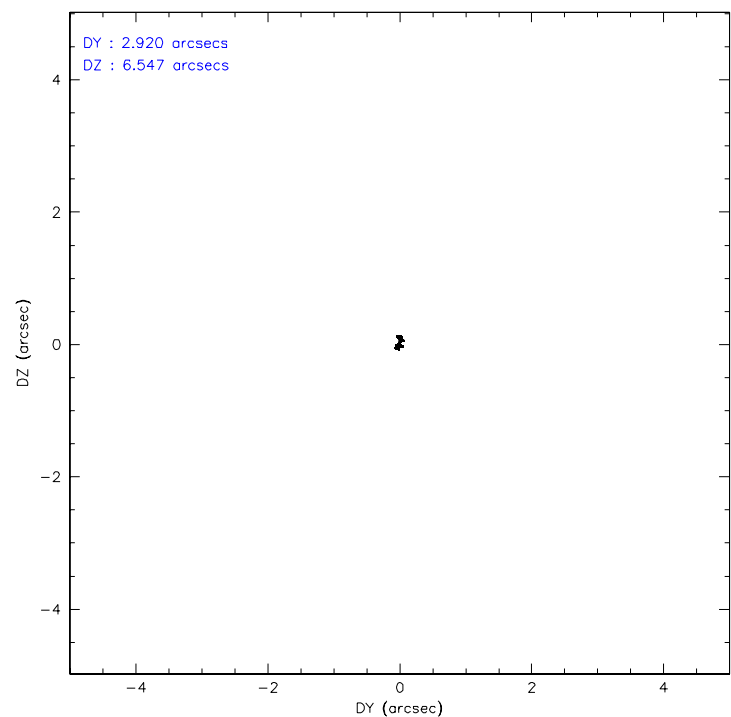
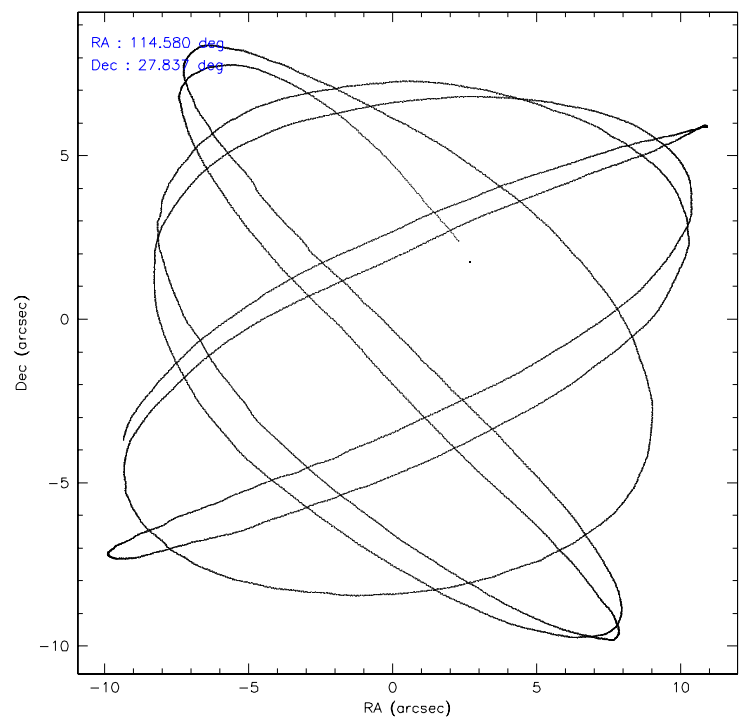
	ccd 7
level 1 events	5556
rejected events	3378
rejected %	60%

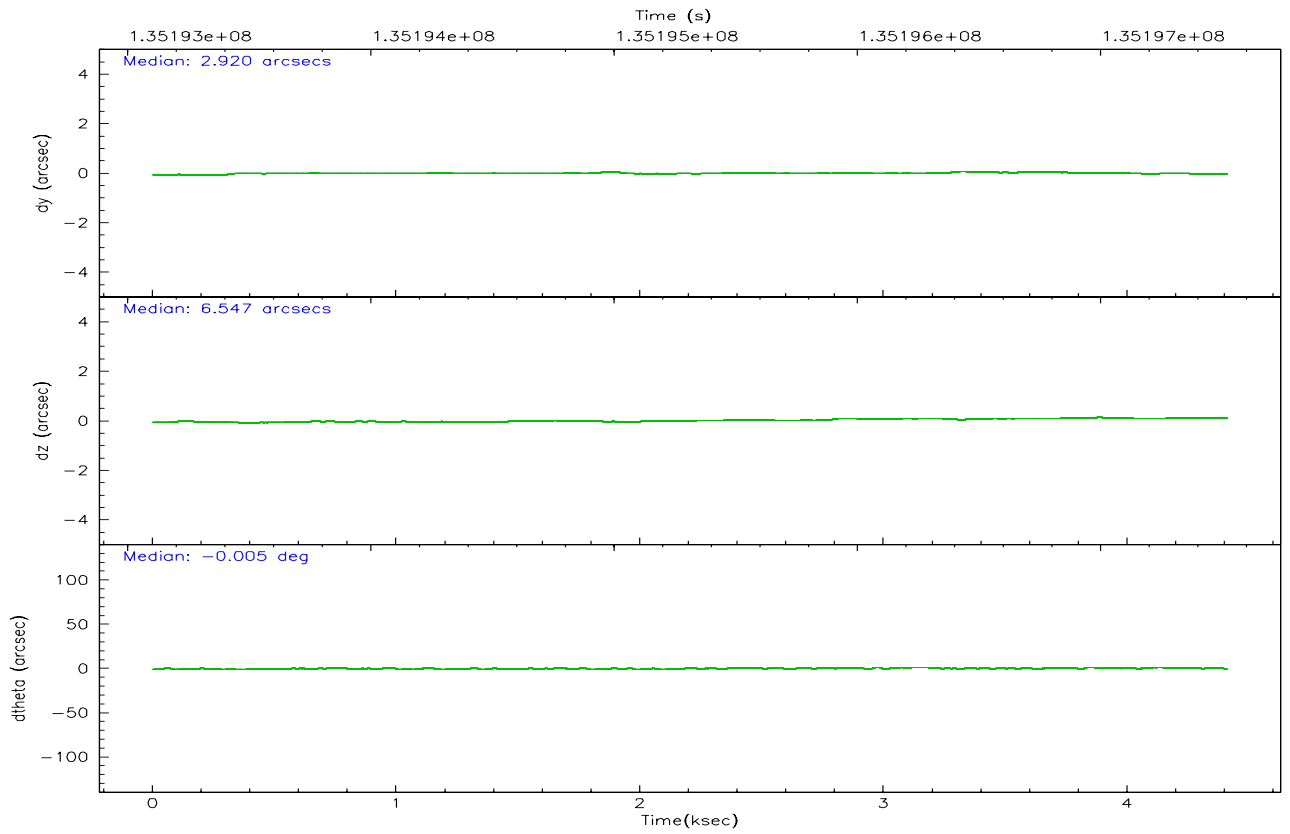
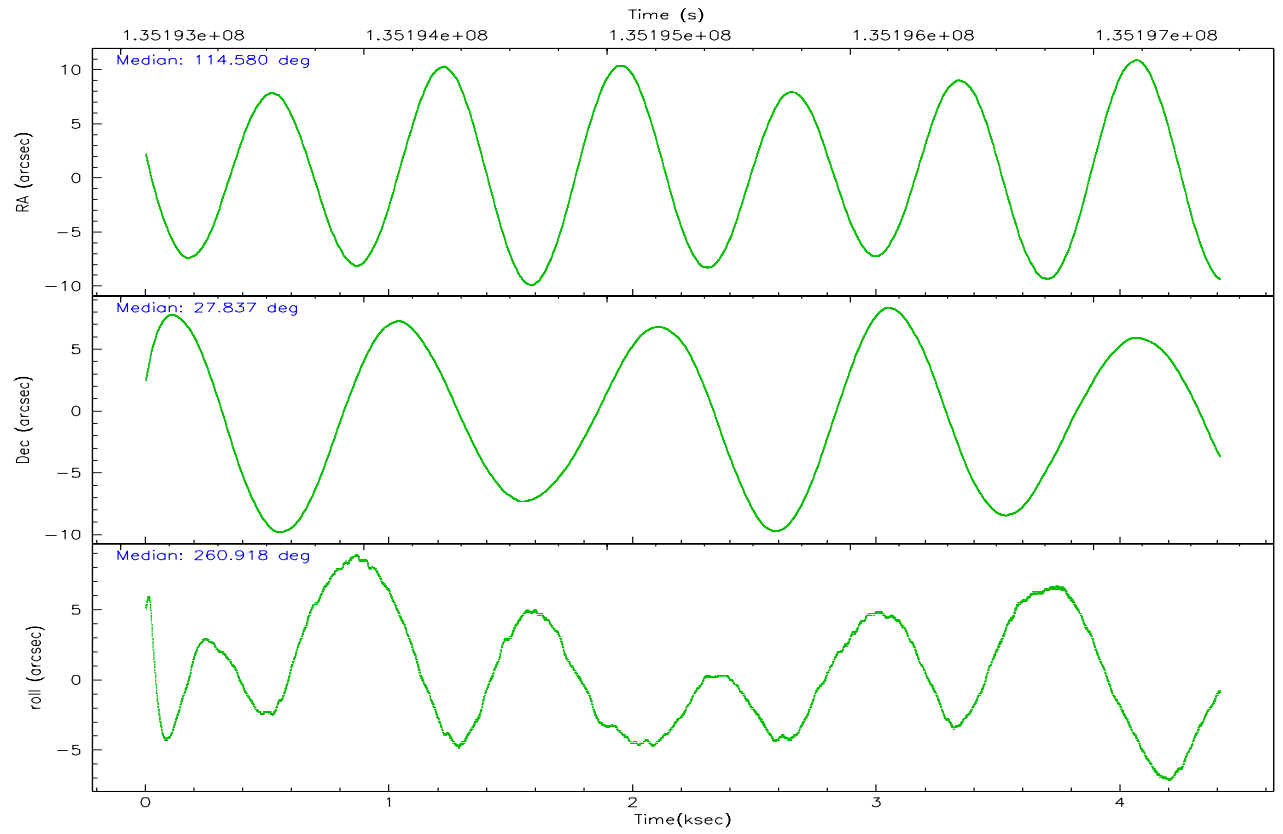
	ccd 7
grade 0 events	179
	3%
grade 1 events	6
	0%
grade 2 events	531
	9%
grade 3 events	261
	4%
grade 4 events	252
	4%
grade 5 events	356
	6%
grade 6 events	1172
	21%
grade 7 events	2799
	50%

2.2 Compared Parameters

Parameter	Planned	Actual	Parameter	Planned	Actual
Instrument	ACIS	ACIS	Obspar format version number	6	6
Detector	ACIS-7	ACIS-7	Obspar file type	PREDICTED	ACTUAL
Grating	NONE	NONE	Obspar update status	NONE	UPDATED
Data mode	FAINT	FAINT	On-chip summing requested	N	N
Observation mode	POINTING	POINTING	Subarray requested	1/8	1/8
Pointing RA	114.568774	114.5801083609408	Subarray start row	0	449
Pointing Dec	27.862138	27.83691042643849	Subarray row count	1024	128
Pointing Roll	260.771672	260.9230515884527	Alternating exposures requested	N	N
SIM focus pos (mm)	-0.684267	-0.6828225247311905	Primary exposure time	0.000000	0.4
SIM defocus (mm)	0	0.001444936568705701			
SIM translation stage pos (mm)	-190.132523	-190.1425803651734			
SIM translation stage offset (mm)	0	0.01005778216563158			
Observation start time	135193516.184000	135192442.91141			
Observation start date	2002-04-14T17:44:12	2002-04-14T17:27:22			
Observation end time	135197516.184000	135198038.89914			
Observation end date	2002-04-14T18:50:52	2002-04-14T19:00:38			
Read mode	TIMED	TIMED			

2.3 Aspect



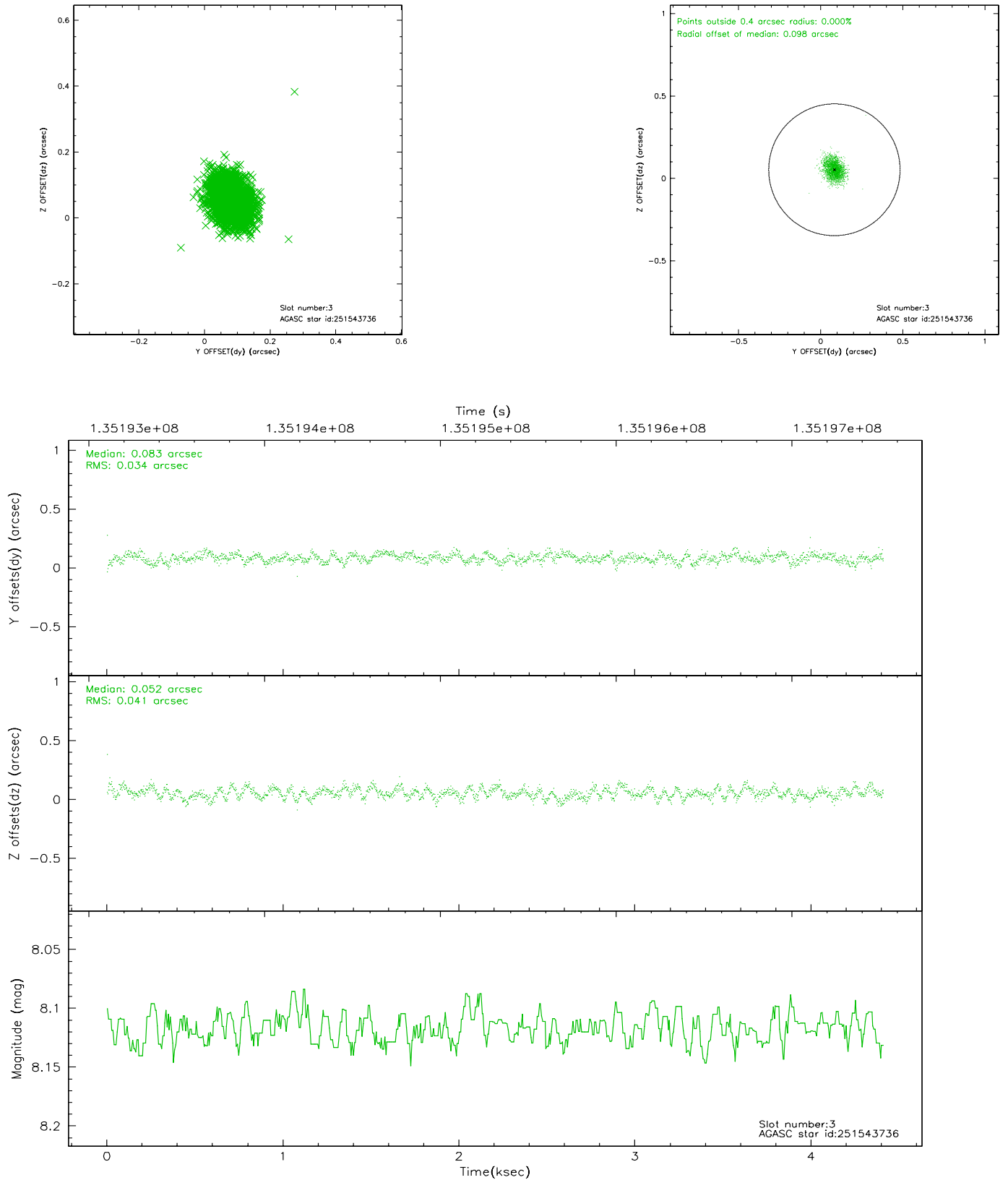


Slot Statistics

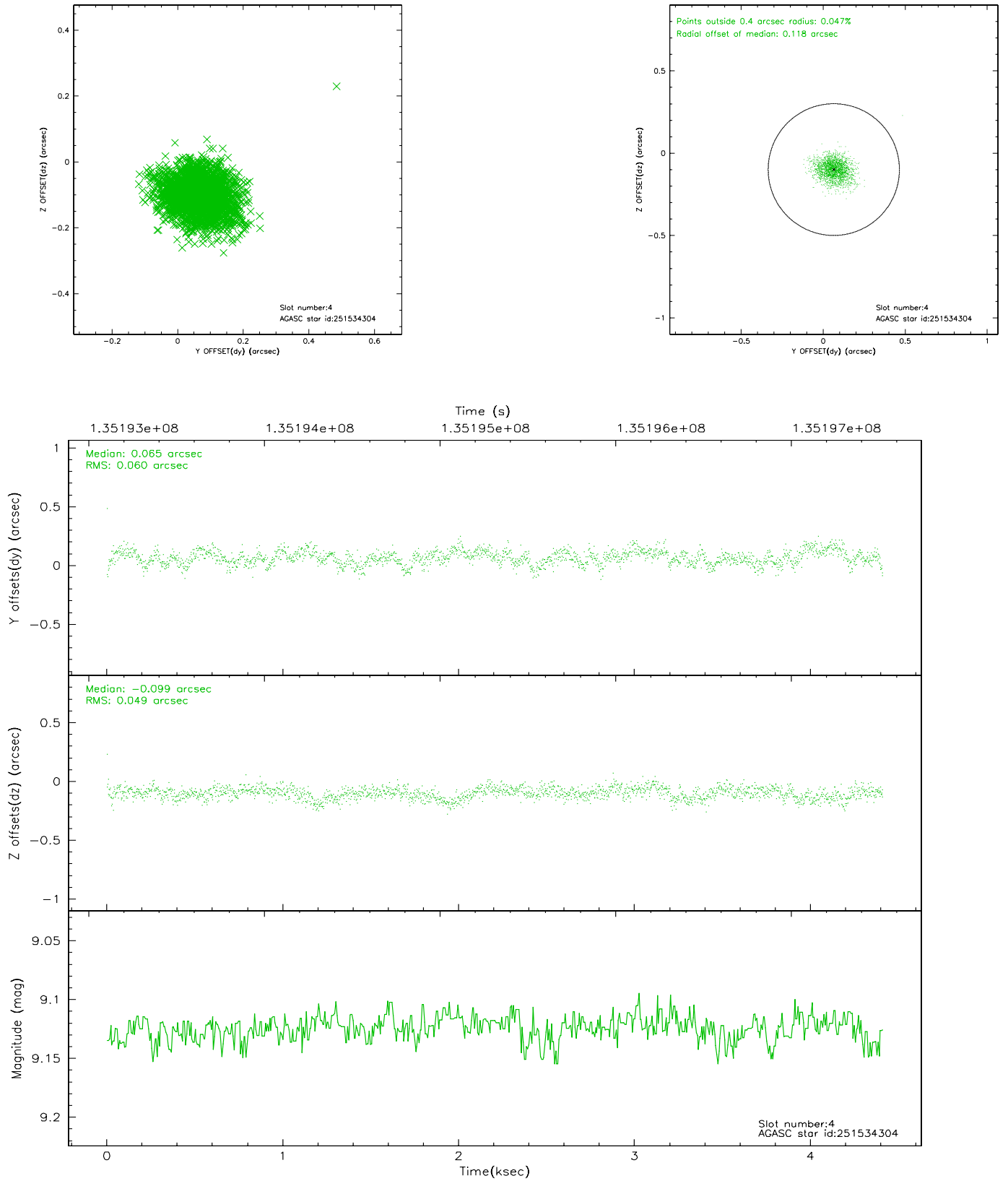
slot	status	id	mag	n_pts	med_dy	med_dz	dr1	dr2	ra	dec	mean_y	mean_z
0	FID	ACIS-S-2	7.11	1076	-0.013	0.036	0.007	0.011	0.000000	0.000000	-755.54	-1727.65
1	FID	ACIS-S-4	7.20	1076	-0.065	-0.003	0.005	0.009	0.000000	0.000000	2157.02	179.40
2	FID	ACIS-S-5	7.24	1076	0.047	-0.024	0.006	0.011	0.000000	0.000000	-1806.55	174.58
3	GUIDE	251543736	8.12	2152	0.083	0.052	0.056	0.090	115.042028	27.315303	1698.53	1809.59
4	GUIDE	251534304	9.12	2148	0.065	-0.099	0.082	0.134	113.965251	27.514439	1541.95	-1701.25
5	GUIDE	252062672	9.19	2138	-0.171	0.076	0.084	0.134	114.613031	28.317174	-1637.85	-125.28
6	GUIDE	252194784	9.57	2150	-0.180	0.050	0.110	0.177	115.249930	28.424447	-2350.06	1802.80
7	GUIDE	251537632	9.40	2148	0.199	-0.079	0.080	0.132	114.277254	27.559282	1224.54	-742.94

2.4 Star Slots

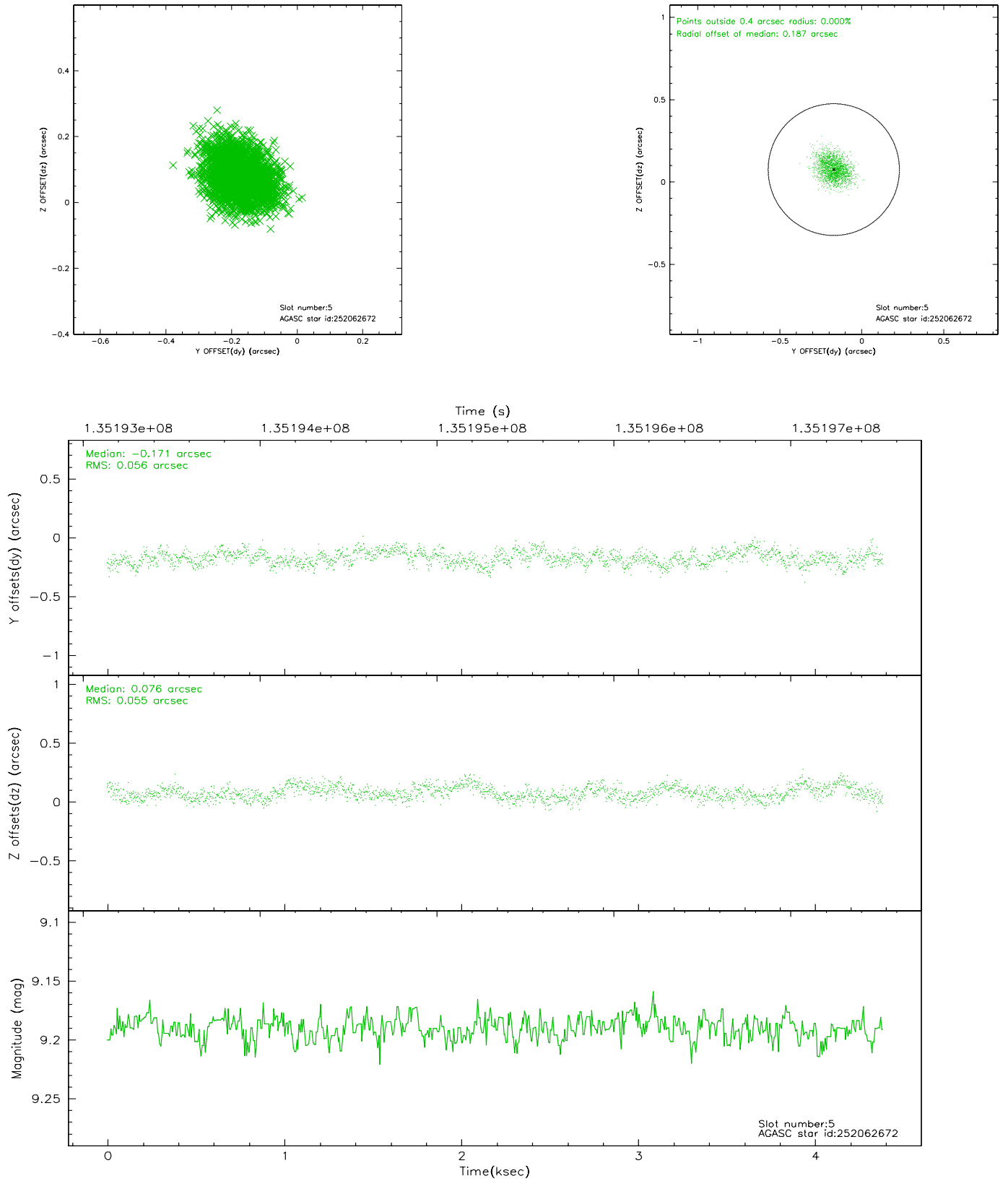
2.4.1 Slot 3



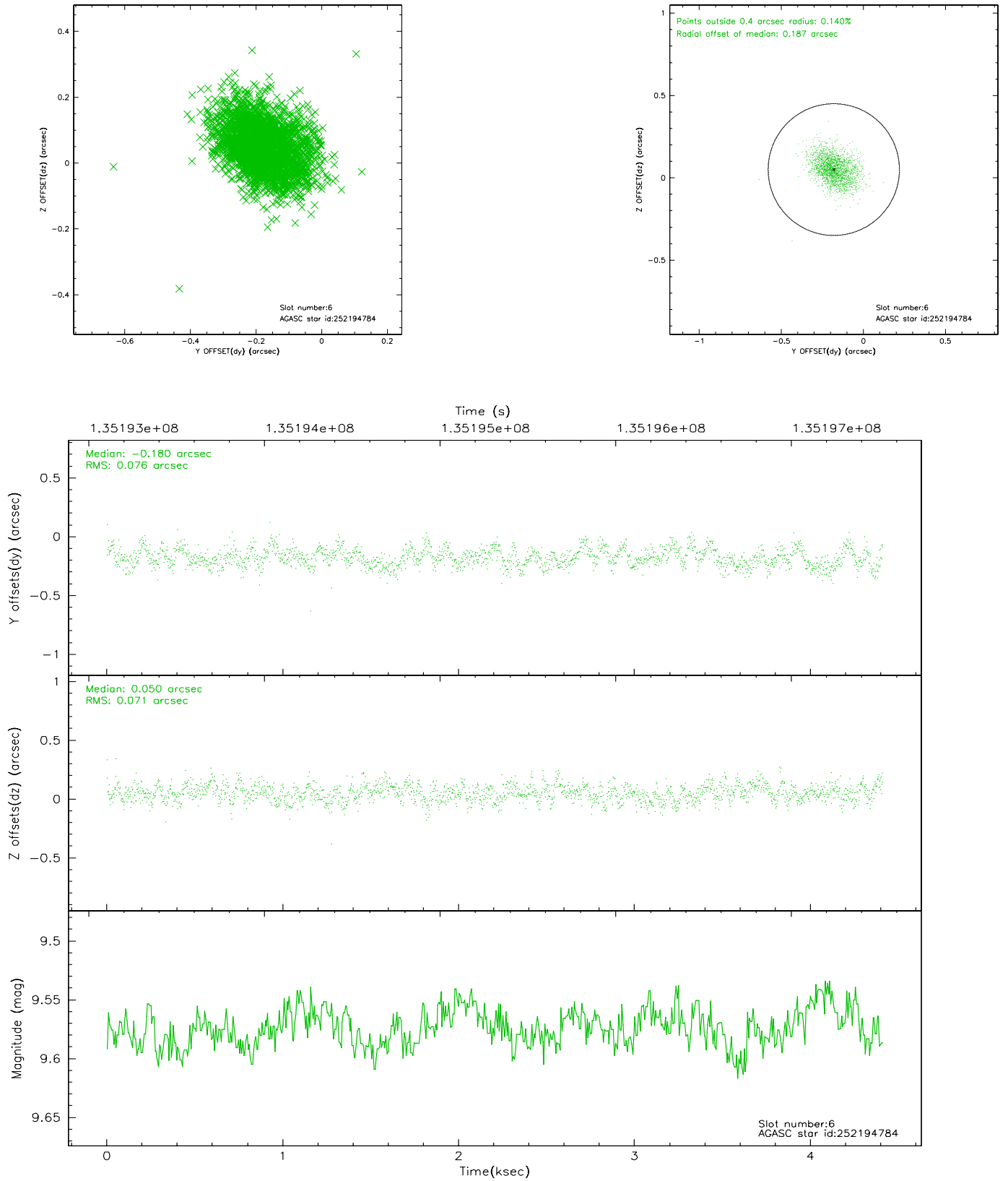
2.4.2 Slot 4



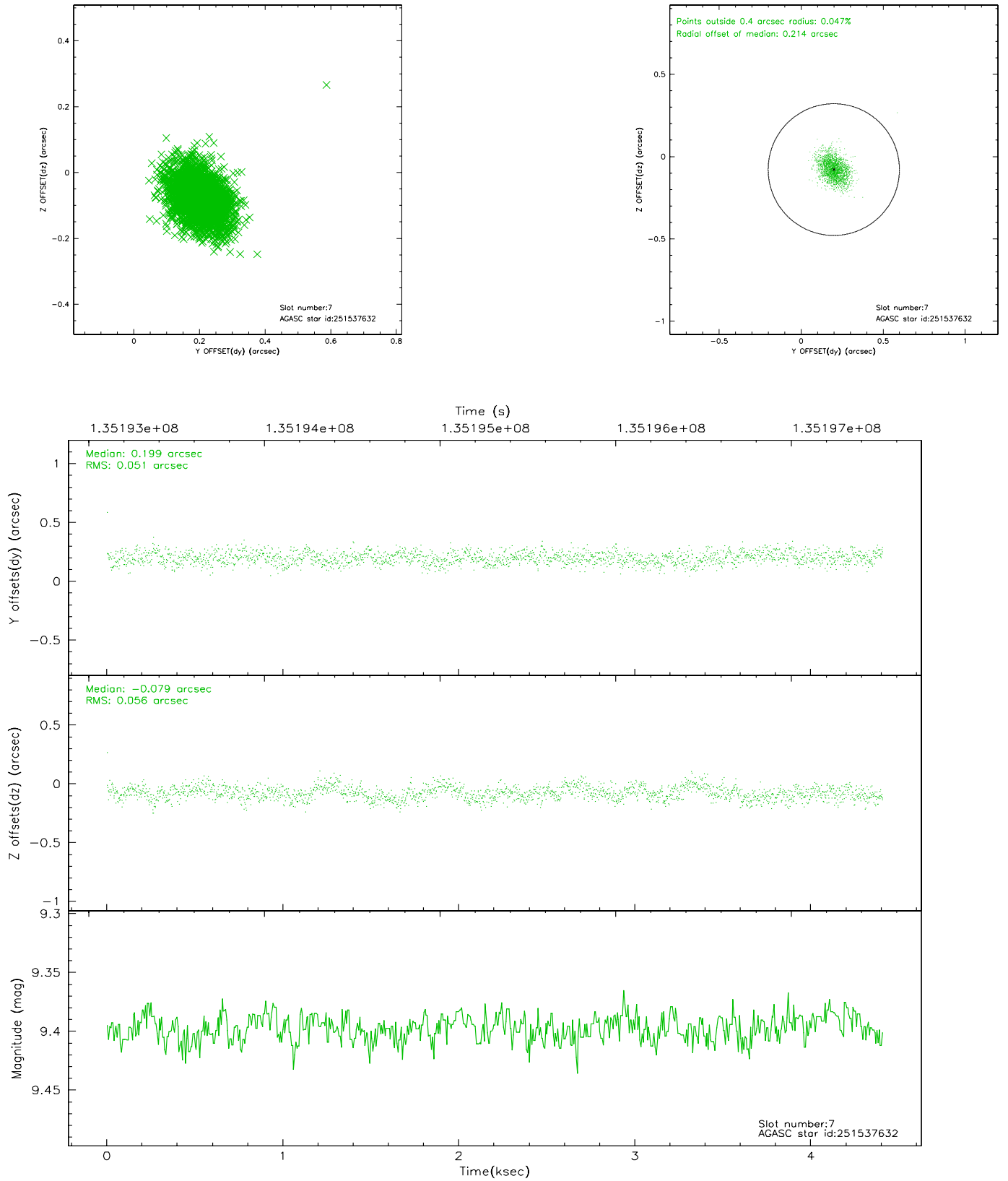
2.4.3 Slot 5



2.4.4 Slot 6

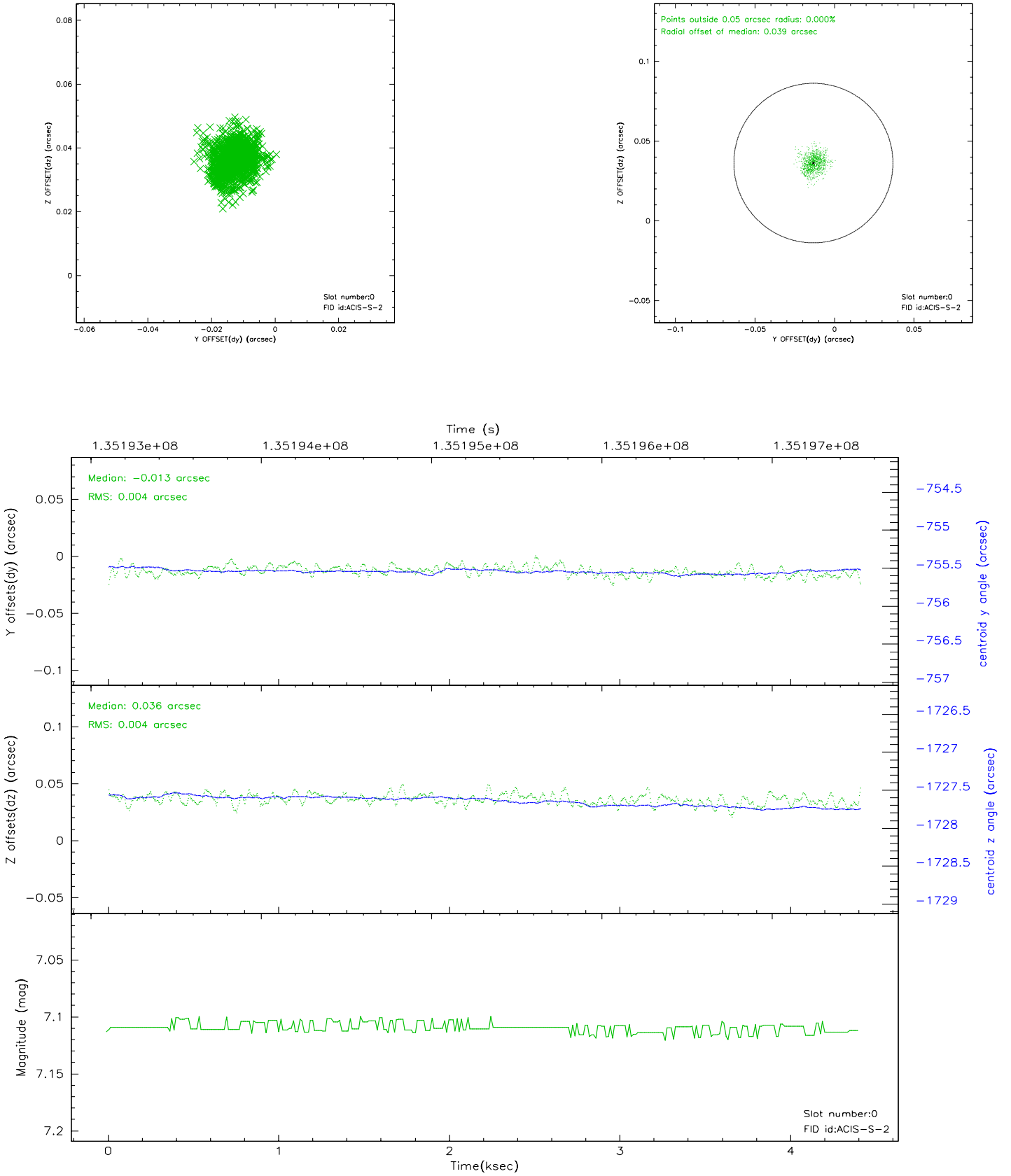


2.4.5 Slot 7

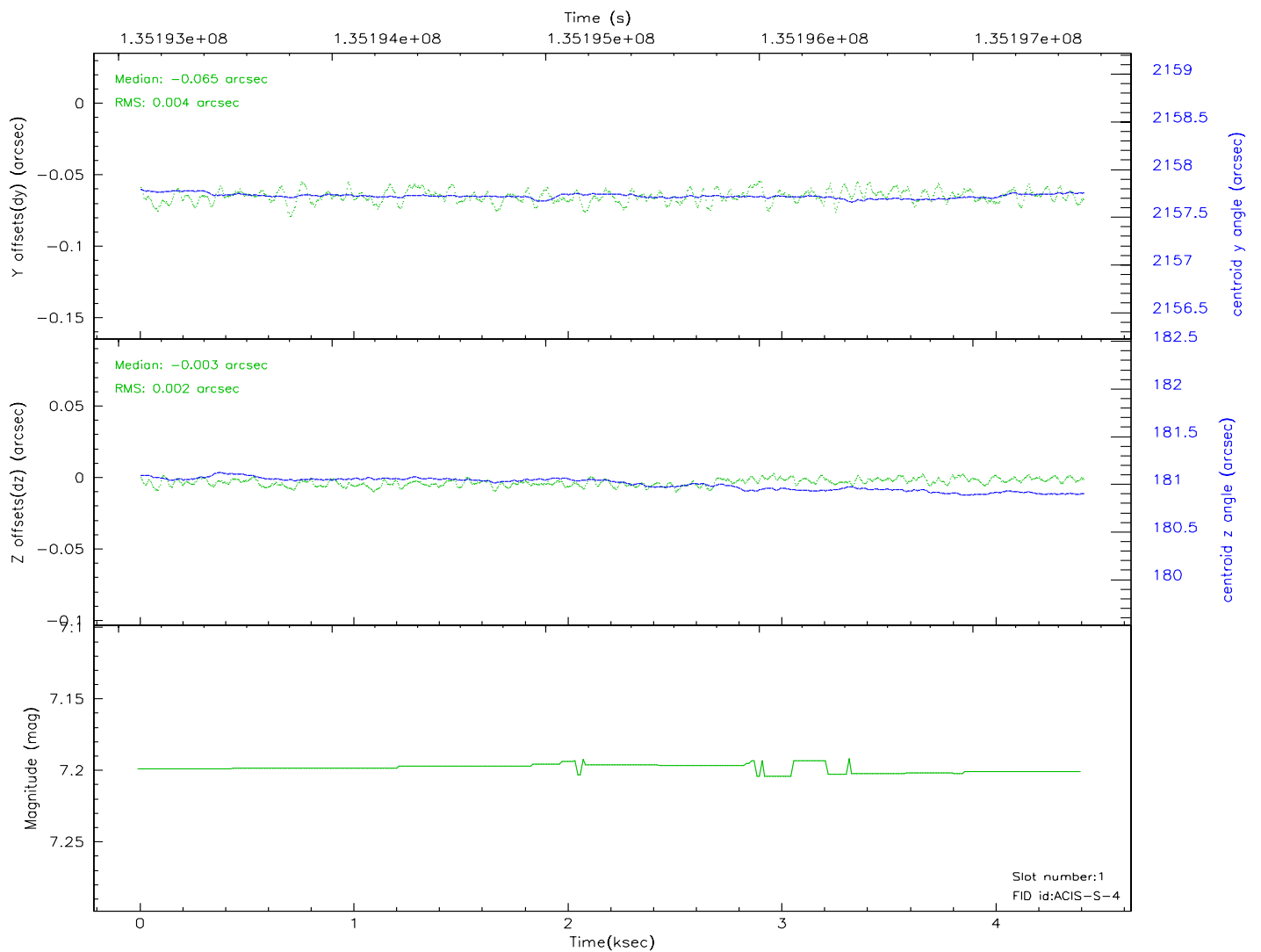
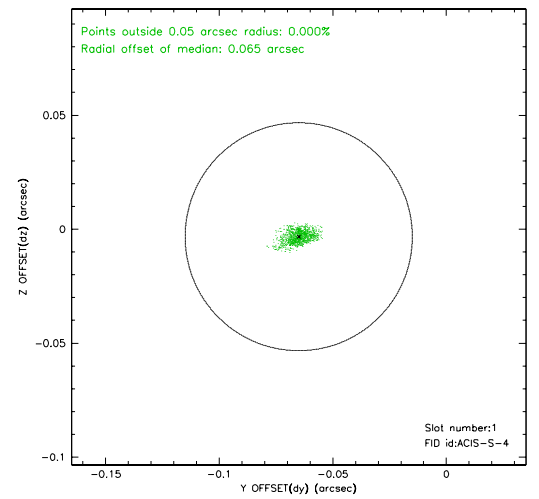
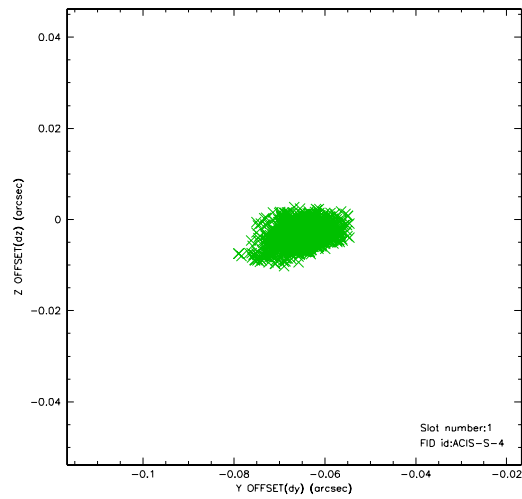


2.5 FID Slots

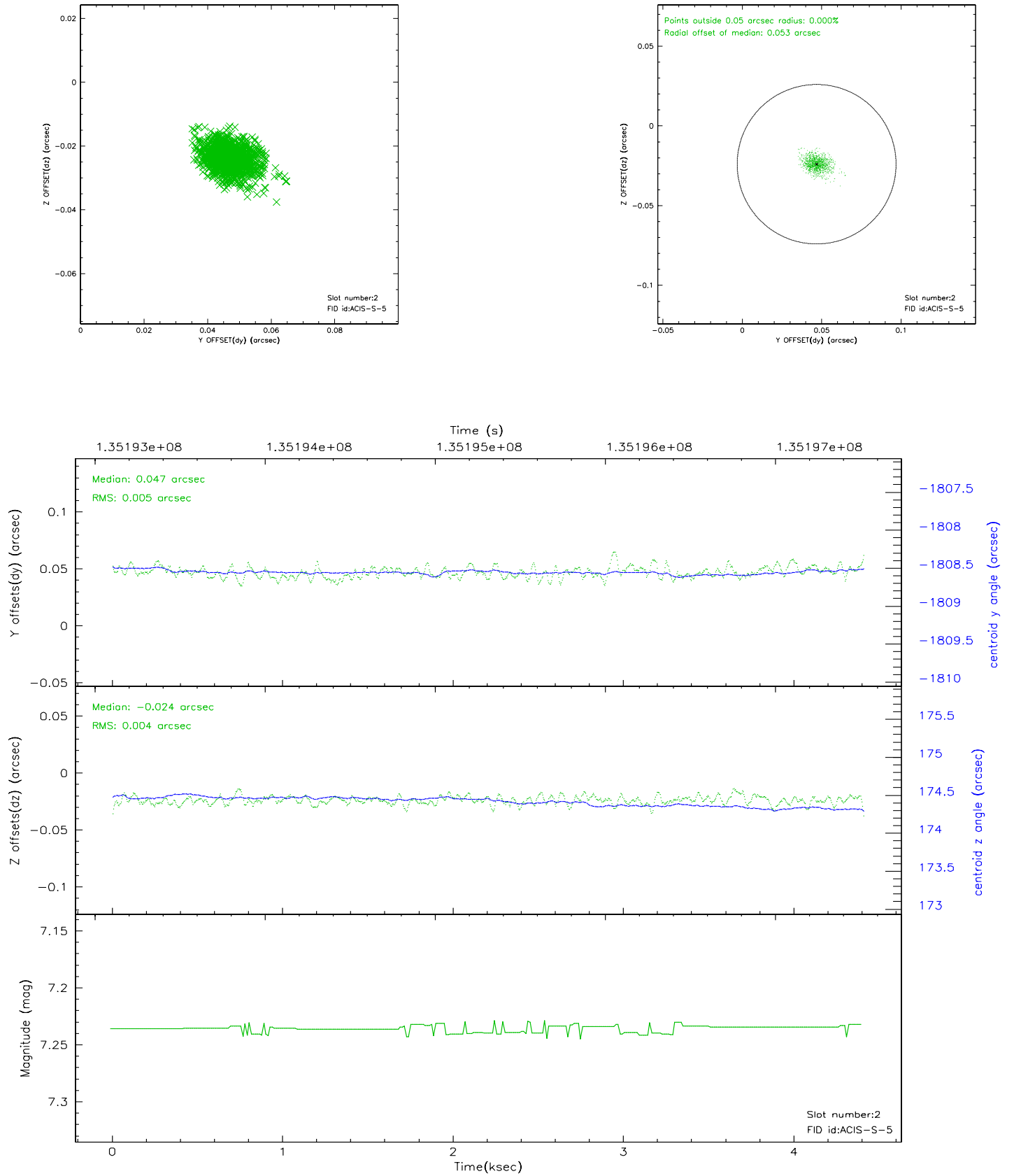
2.5.1 Slot 0



2.5.2 Slot 1



2.5.3 Slot 2



3 Point Sources

A Summary

A.1 Status

V&V Scientist	Jen Lauer
V&V Date (YYYY-MM-DD)	2006.09.11
V&V Edition	1
V&V Disposition and Status	OK
V&V Charge Time	4.408

A.2 Comments