

# V&V Reference Report

## L2 ASCDS Version : 7.6.9

Observation 3070 - L2 Version 001  
Chandra X-Ray Center

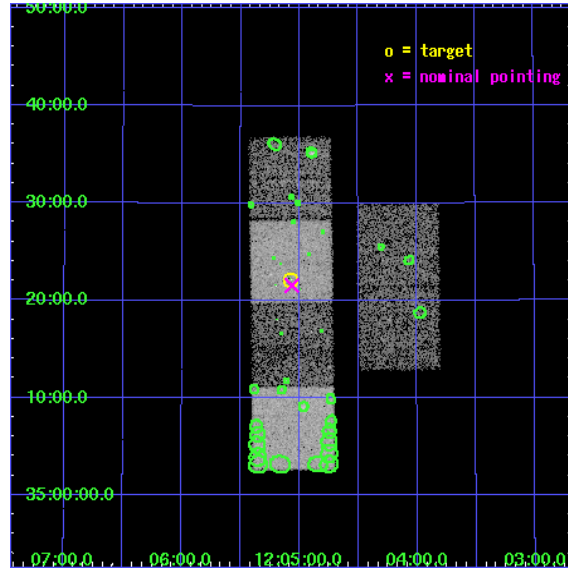
L2 Processing Date : Sep 26 2006

## Contents

<b>1</b>	<b>Front</b>	<b>2</b>
<b>2</b>	<b>OBI</b>	<b>3</b>
2.1	OBI . . . . .	3
2.1.1	Images . . . . .	3
2.1.2	Bias . . . . .	3
2.1.3	Parameters . . . . .	4
2.1.4	Events . . . . .	4
2.2	Compared Parameters . . . . .	5
2.3	Aspect . . . . .	6
2.4	Star Slots . . . . .	9
2.4.1	Slot 3 . . . . .	9
2.4.2	Slot 4 . . . . .	10
2.4.3	Slot 5 . . . . .	11
2.4.4	Slot 6 . . . . .	12
2.4.5	Slot 7 . . . . .	13
2.5	FID Slots . . . . .	14
2.5.1	Slot 0 . . . . .	14
2.5.2	Slot 1 . . . . .	15
2.5.3	Slot 2 . . . . .	16
<b>3</b>	<b>Point Sources</b>	<b>17</b>
<b>A</b>	<b>Summary</b>	<b>18</b>
A.1	Status . . . . .	18
A.2	Comments . . . . .	18

# 1 Front

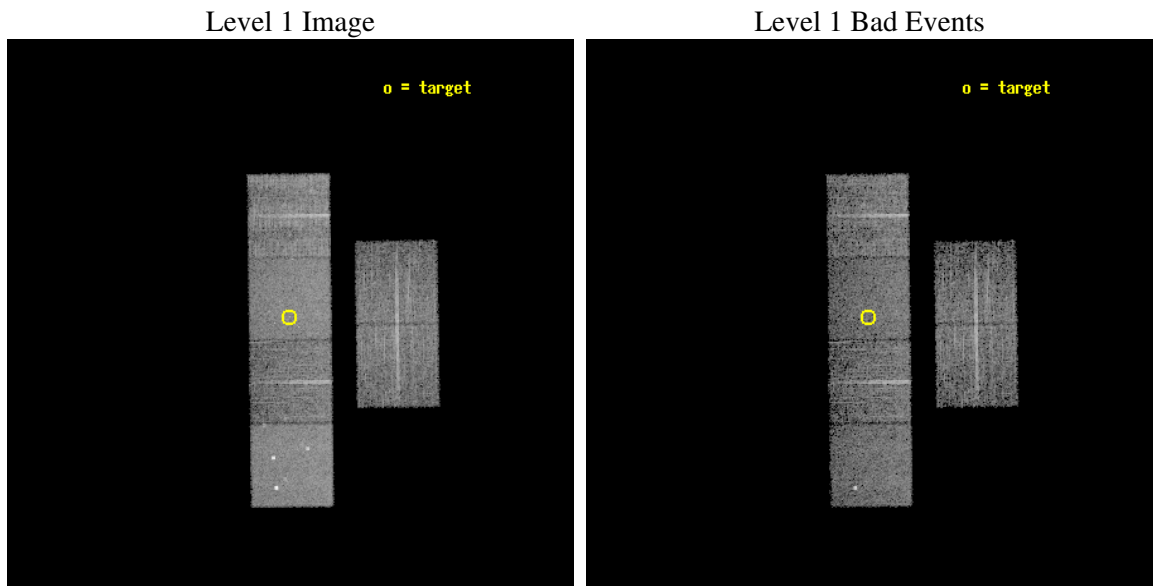
seq_num	700509
obs_id	3070
title	X-RAY WEAK BROAD-LINE QUASARS: ABSORPTION OR INTRINSIC X_RAY WEAKNESS ?
observer	Dr Guido Risaliti
object	HS 1202+3538
dtcycle	0
cycle	P
ra_targ	181.268333
dec_targ	35.368917
ra_nom	181.2660788846
dec_nom	35.359474310908
roll_nom	269.26601837135
revision	2
ontime	6761.5999748111
livetime	6675.9805245833
ontime2	6761.5999748111
ontime3	6761.5999748111
ontime5	6761.5999748111
ontime6	6761.5999748111
ontime7	6761.5999748111
ontime8	6761.5999748111
l2events	74439



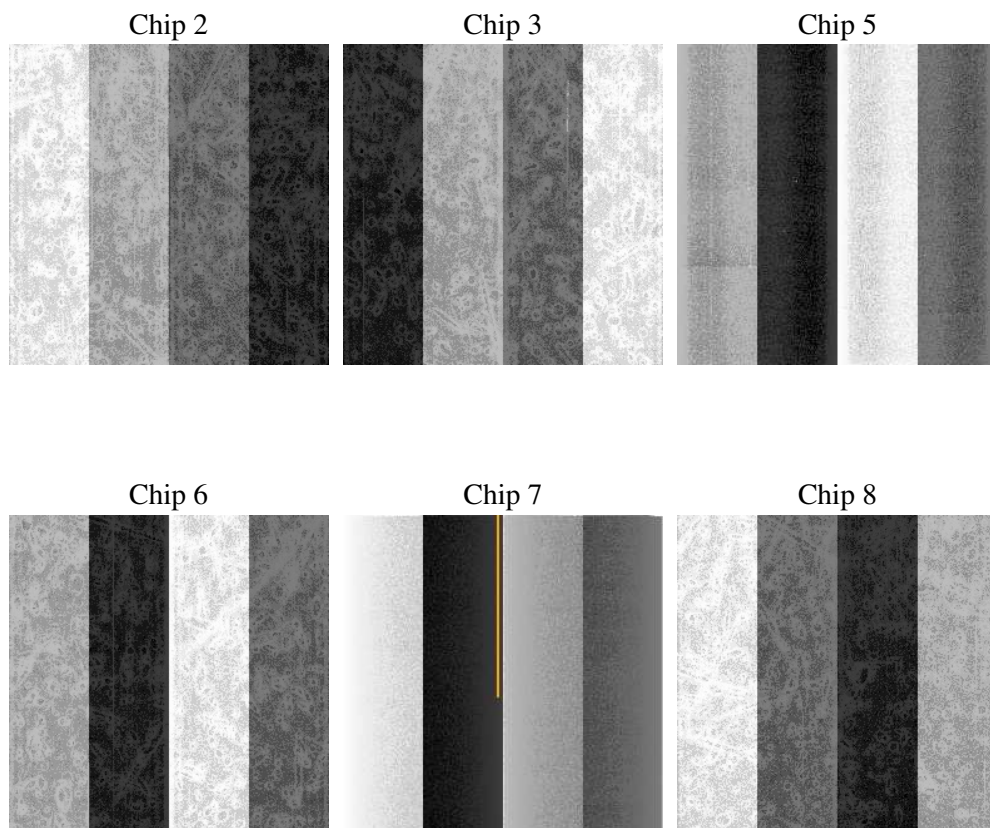
## 2 OBI

### 2.1 OBI

#### 2.1.1 Images



#### 2.1.2 Bias



### 2.1.3 Parameters

obi_num	1
ascdsver	7.6.9
caldbver	3.2.3
date	2006-09-26T09:15:25
revision	2

sched_exp_time	6800.000000
ontime	6763.9644681513
ontime2	6763.9644482732
ontime3	6767.205458343
ontime5	6767.205458343
ontime6	6767.205458343
ontime7	6763.9644681513
ontime8	6767.205458343
l1events	320335

### 2.1.4 Events

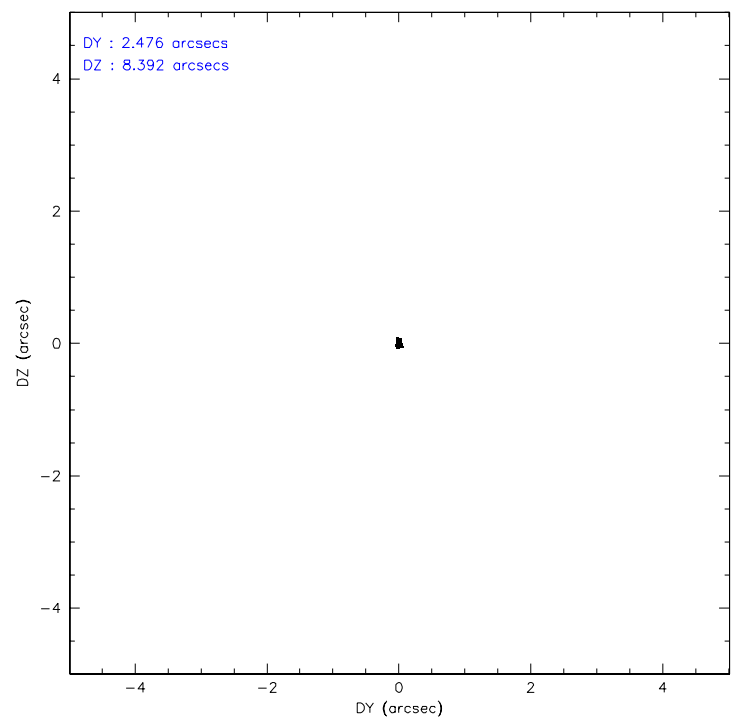
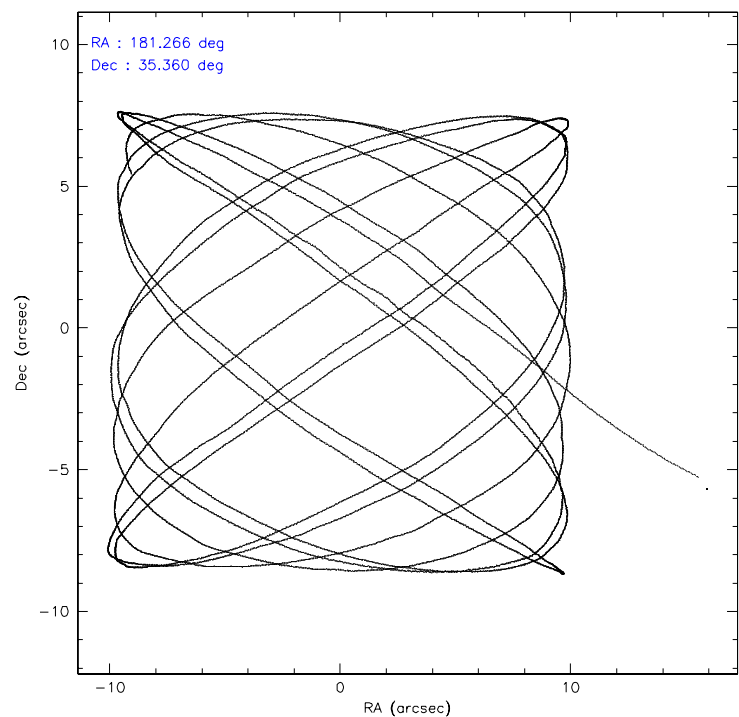
	ccd 2	ccd 3	ccd 5	ccd 6	ccd 7	ccd 8
level 1 events	45635	43159	67057	44555	58865	61064
rejected events	39505	37338	35471	38216	34809	44413
rejected %	86%	86%	52%	85%	59%	72%

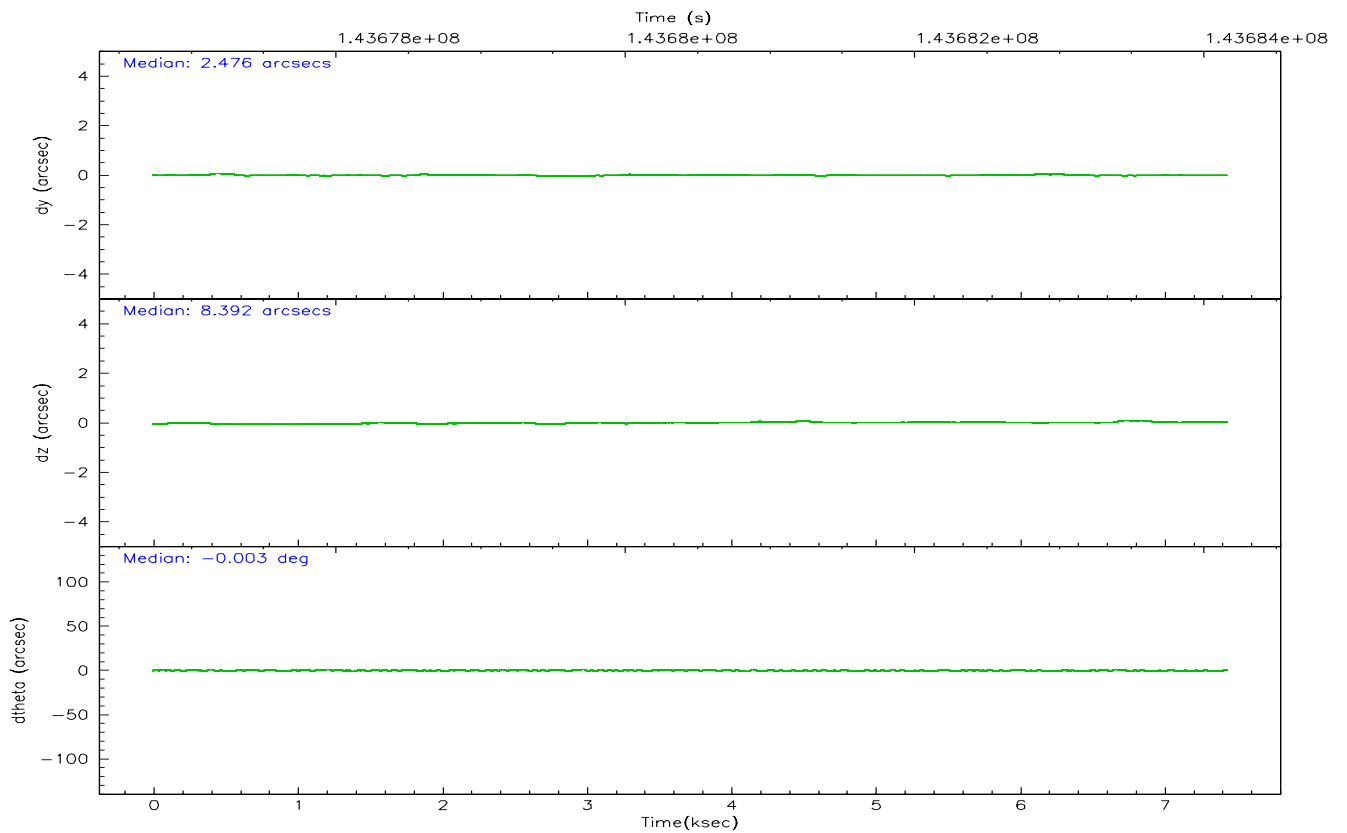
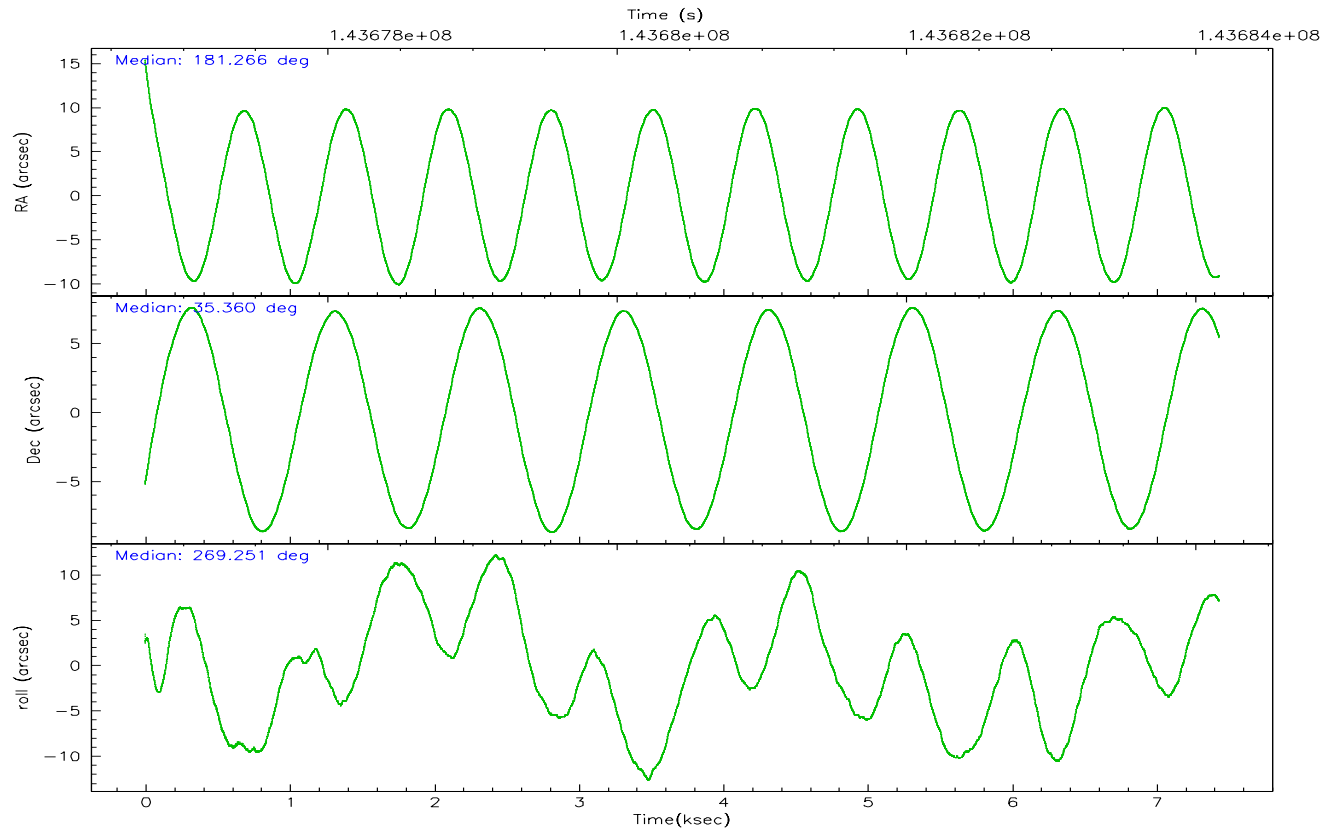
	ccd 2	ccd 3	ccd 5	ccd 6	ccd 7	ccd 8
grade 0 events	2760	2655	3832	2741	1601	5822
	6%	6%	5%	6%	2%	9%
grade 1 events	31	24	723	19	30	46
	0%	0%	1%	0%	0%	0%
grade 2 events	1361	1202	9693	1266	6007	2989
	2%	2%	14%	2%	10%	4%
grade 3 events	499	503	754	599	1360	2182
	1%	1%	1%	1%	2%	3%
grade 4 events	498	508	719	538	1272	1937
	1%	1%	1%	1%	2%	3%
grade 5 events	1530	1756	2960	1823	3846	2457
	3%	4%	4%	4%	6%	4%
grade 6 events	1012	956	16610	1202	13826	3724
	2%	2%	24%	2%	23%	6%
grade 7 events	37944	35555	31766	36367	30923	41907
	83%	82%	47%	81%	52%	68%

## 2.2 Compared Parameters

Parameter	Planned	Actual	Parameter	Planned	Actual
Instrument	ACIS	ACIS	Obspar format version number	6	6
Detector	ACIS-235678	ACIS-235678	Obspar file type	PREDICTED	ACTUAL
Grating	NONE	NONE	Obspar update status	NONE	UPDATED
Data mode	FAINT	FAINT	Number of optional ACIS chips dropped	0	0
Observation mode	POINTING	POINTING	On-chip summing requested	N	N
Pointing RA	181.249382	181.2660788846041	Subarray requested	NONE	NONE
Pointing Dec	35.382992	35.35947431090796	Alternating exposures requested	N	N
Pointing Roll	269.119052	269.2660183713514	Primary exposure time	0.000000	3.2
SIM focus pos (mm)	-0.684267	-0.6828225247311905			
SIM defocus (mm)	0	0.001444936568705701			
SIM translation stage pos (mm)	-190.132523	-190.1425803651734			
SIM translation stage offset (mm)	0	0.01005778216563158			
Observation start time	143677365.184000	143676177.09567			
Observation start date	2002-07-21T22:21:41	2002-07-21T22:02:57			
Observation end time	143684165.184000	143684562.62101			
Observation end date	2002-07-22T00:15:01	2002-07-22T00:22:42			
Read mode	TIMED	TIMED			

2.3 Aspect





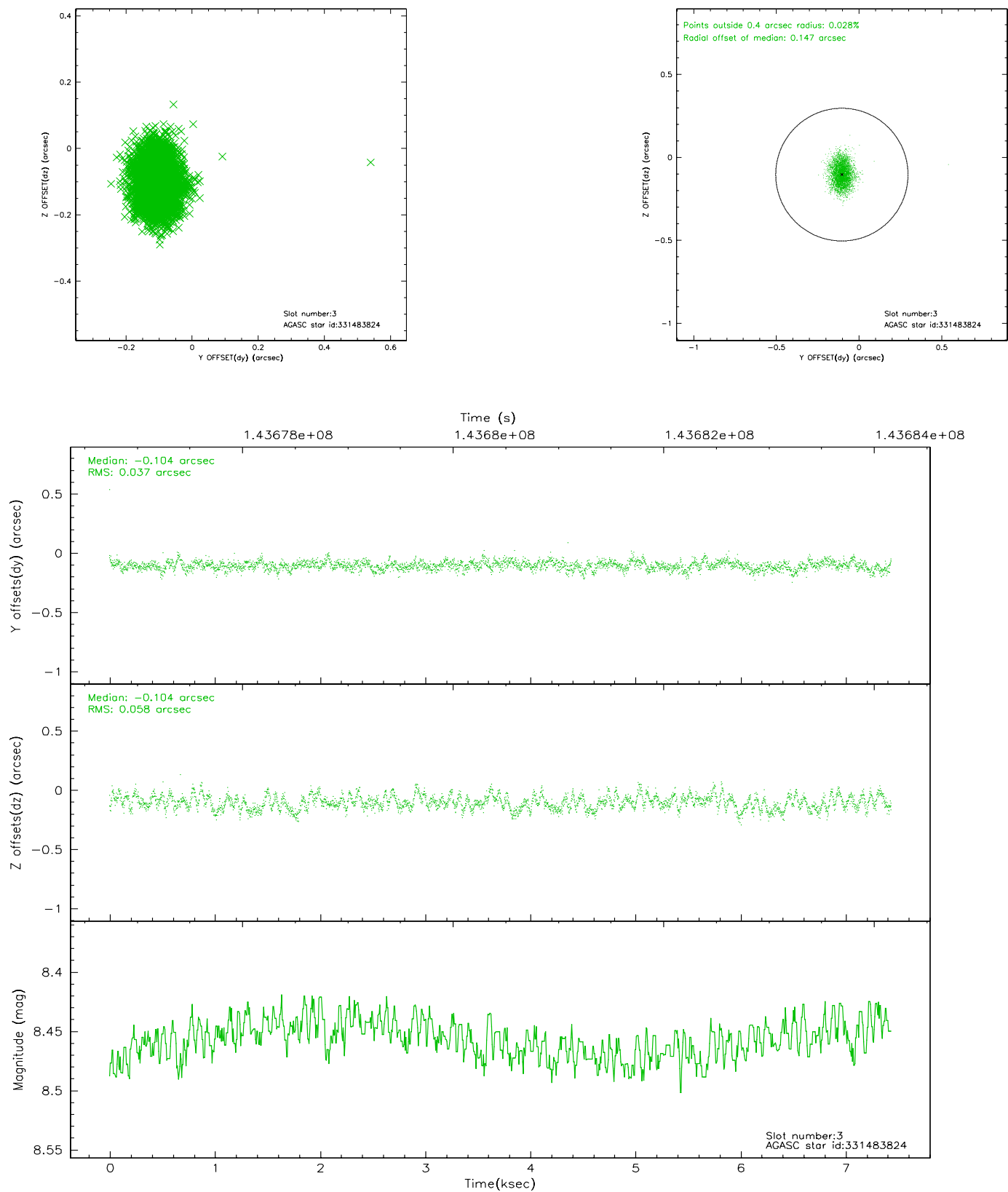
### Slot Statistics

slot	status	id	mag	n_pts	med_dy	med_dz	dr1	dr2	ra	dec	mean_y	mean_z
0	FID	ACIS-S-2	7.11	1813	0.003	0.027	0.006	0.011	0.000000	0.000000	-755.12	-1729.51
1	FID	ACIS-S-4	7.20	1814	-0.081	-0.009	0.005	0.009	0.000000	0.000000	2157.75	178.12
2	FID	ACIS-S-5	7.24	1814	0.047	-0.010	0.006	0.010	0.000000	0.000000	-1806.91	172.70
3	GUIDE	331483824	8.46	3629	-0.104	-0.104	0.073	0.118	180.666969	35.727343	-1216.93	-1722.02
4	GUIDE	331496248	9.06	3626	-0.004	0.126	0.072	0.115	181.210124	35.687171	-1092.36	-132.80
5	GUIDE	331496720	7.27	3629	-0.008	0.127	0.059	0.102	181.168847	35.567415	-659.42	-246.66
6	GUIDE	331498488	9.77	3609	0.060	0.125	0.115	0.189	181.654333	35.339665	135.99	1190.83
7	GUIDE	331482600	9.58	3625	0.056	-0.275	0.096	0.163	180.711313	35.641189	-907.87	-1589.12

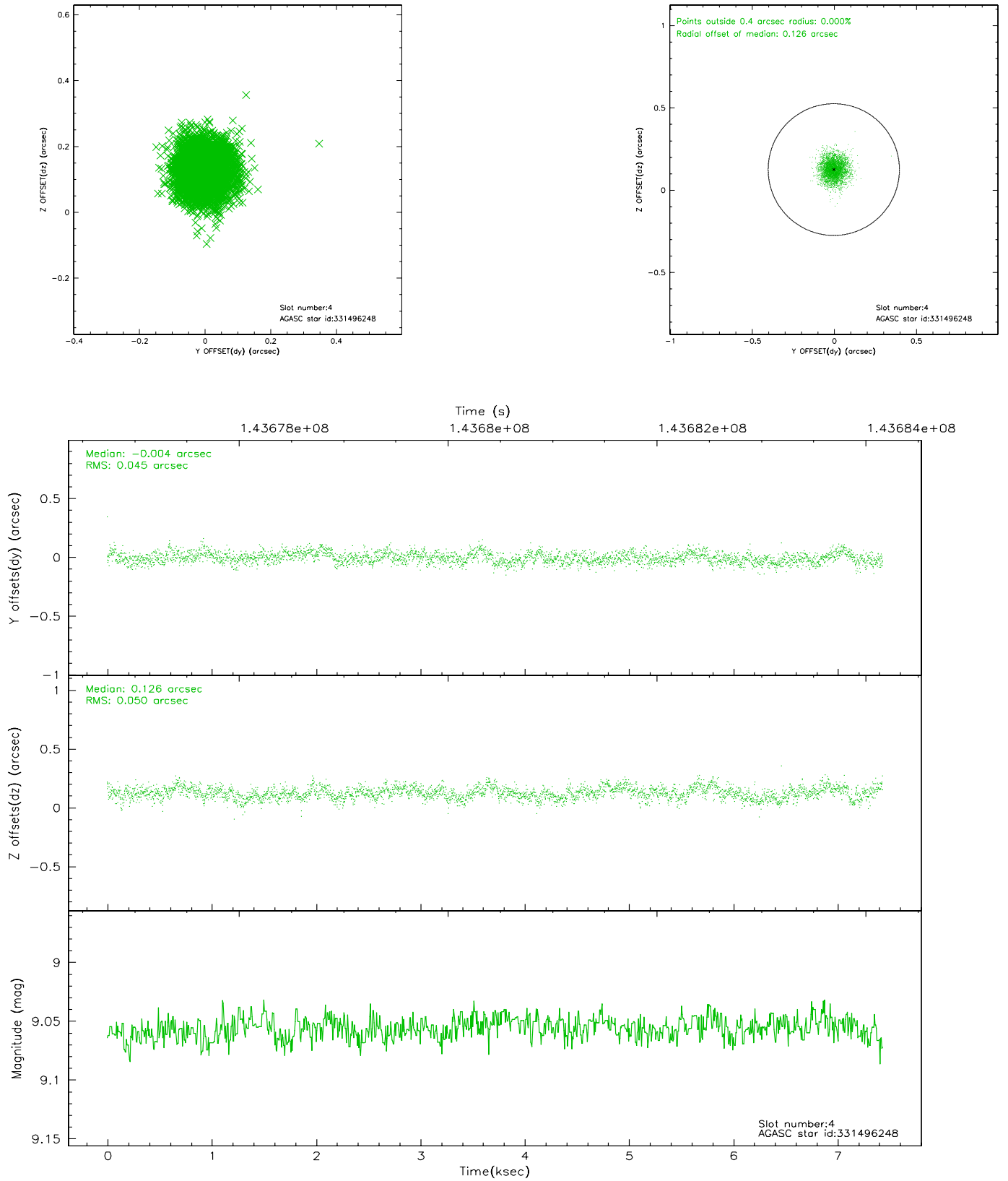


## 2.4 Star Slots

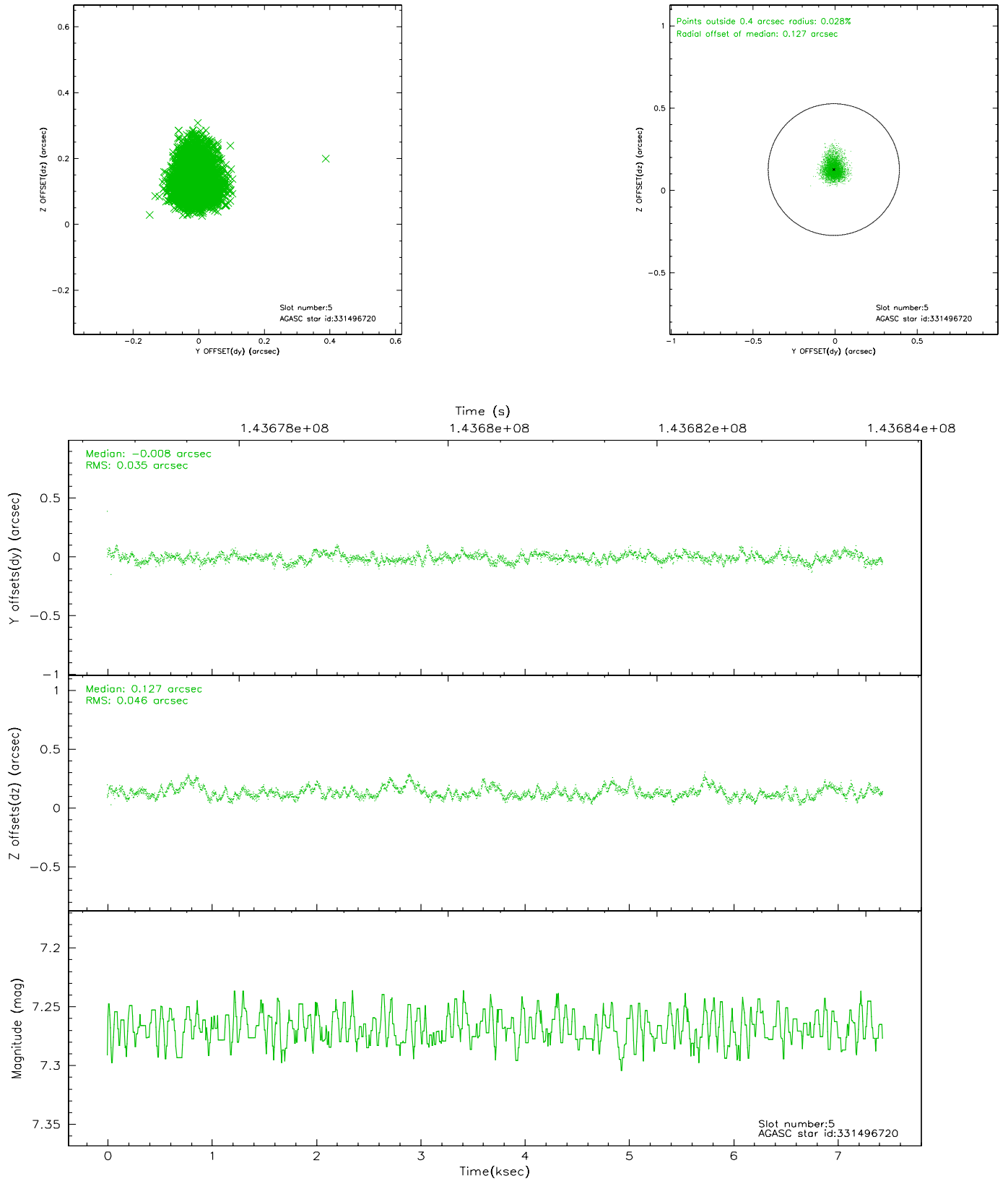
### 2.4.1 Slot 3



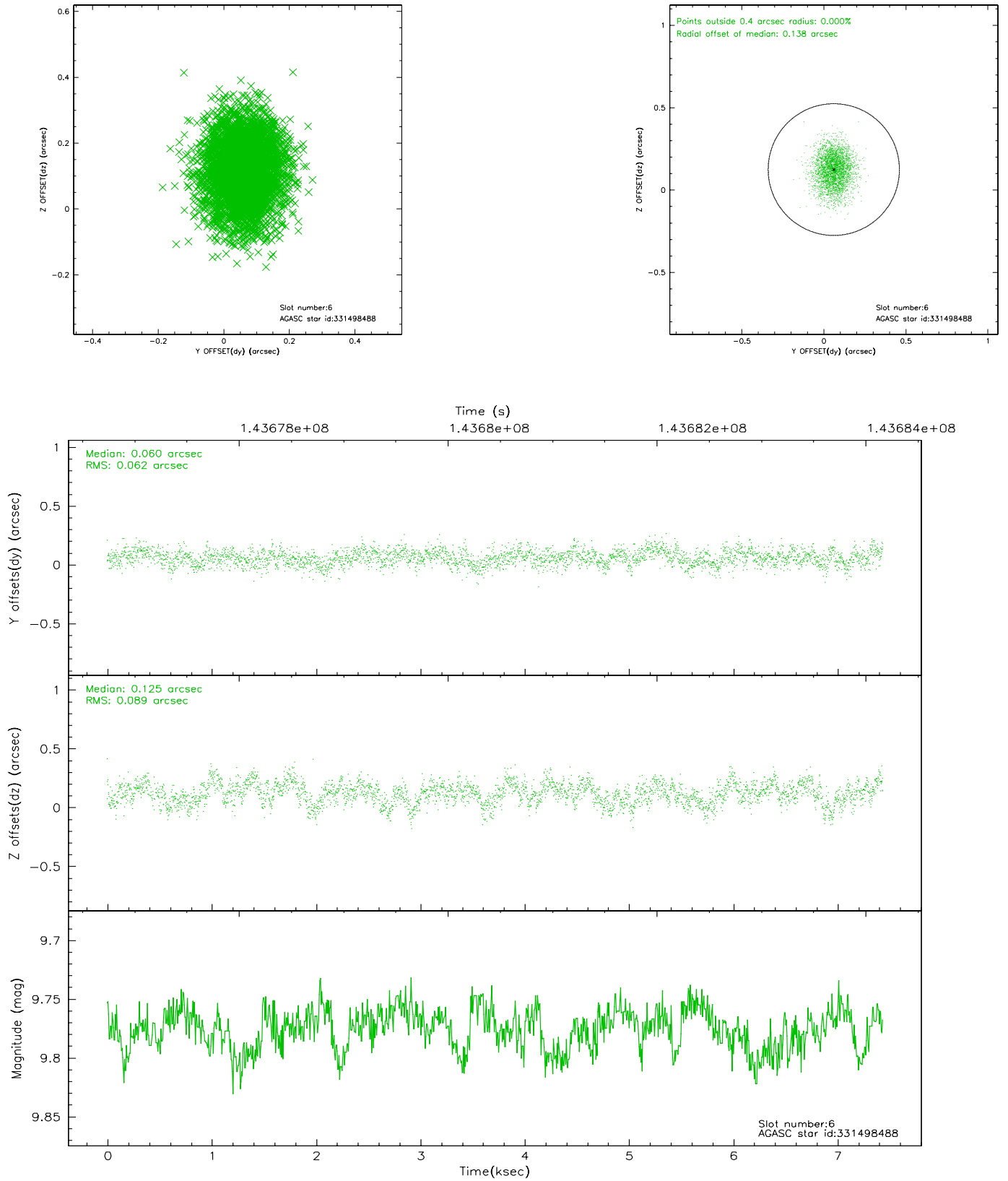
## 2.4.2 Slot 4



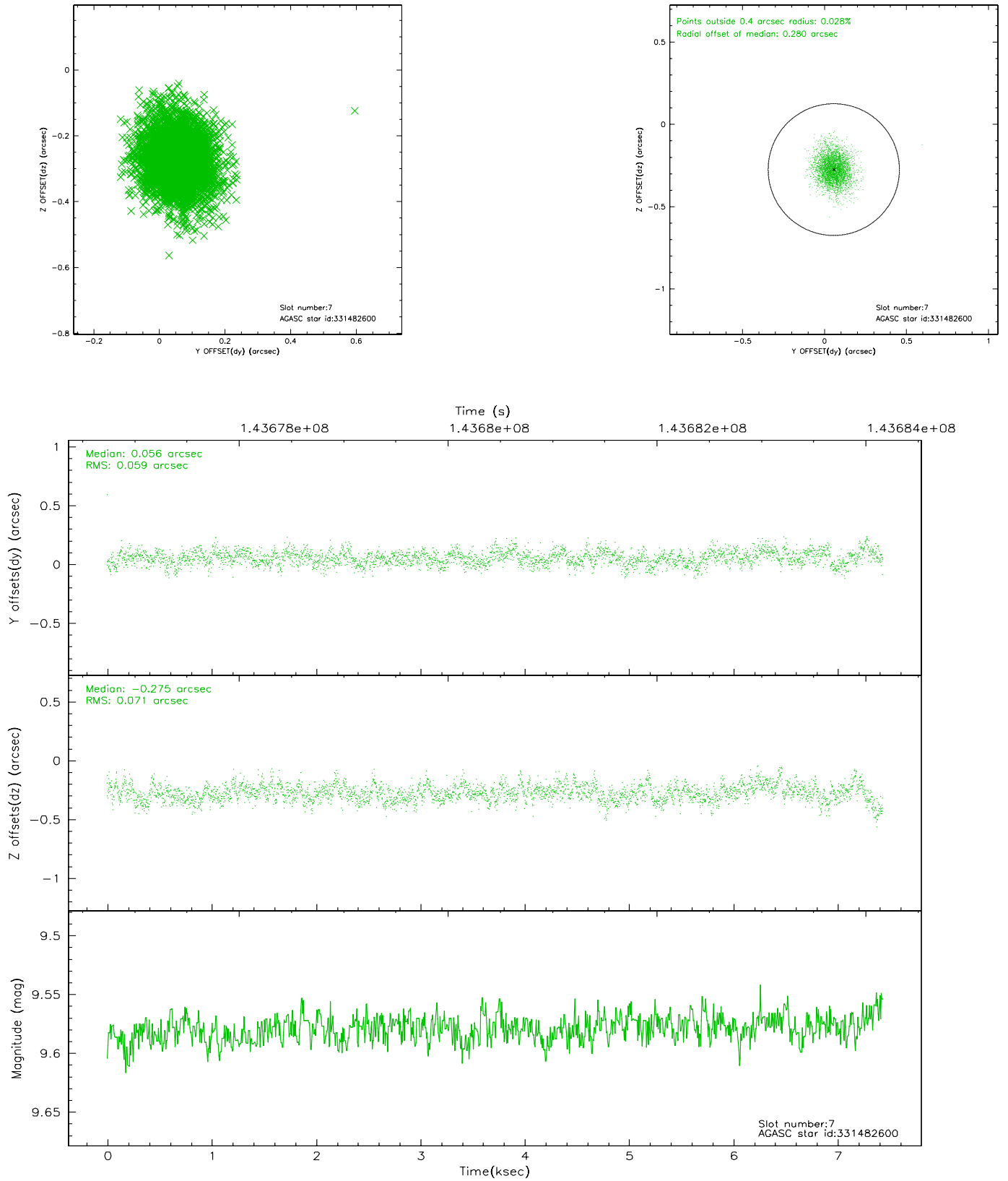
### 2.4.3 Slot 5



## 2.4.4 Slot 6

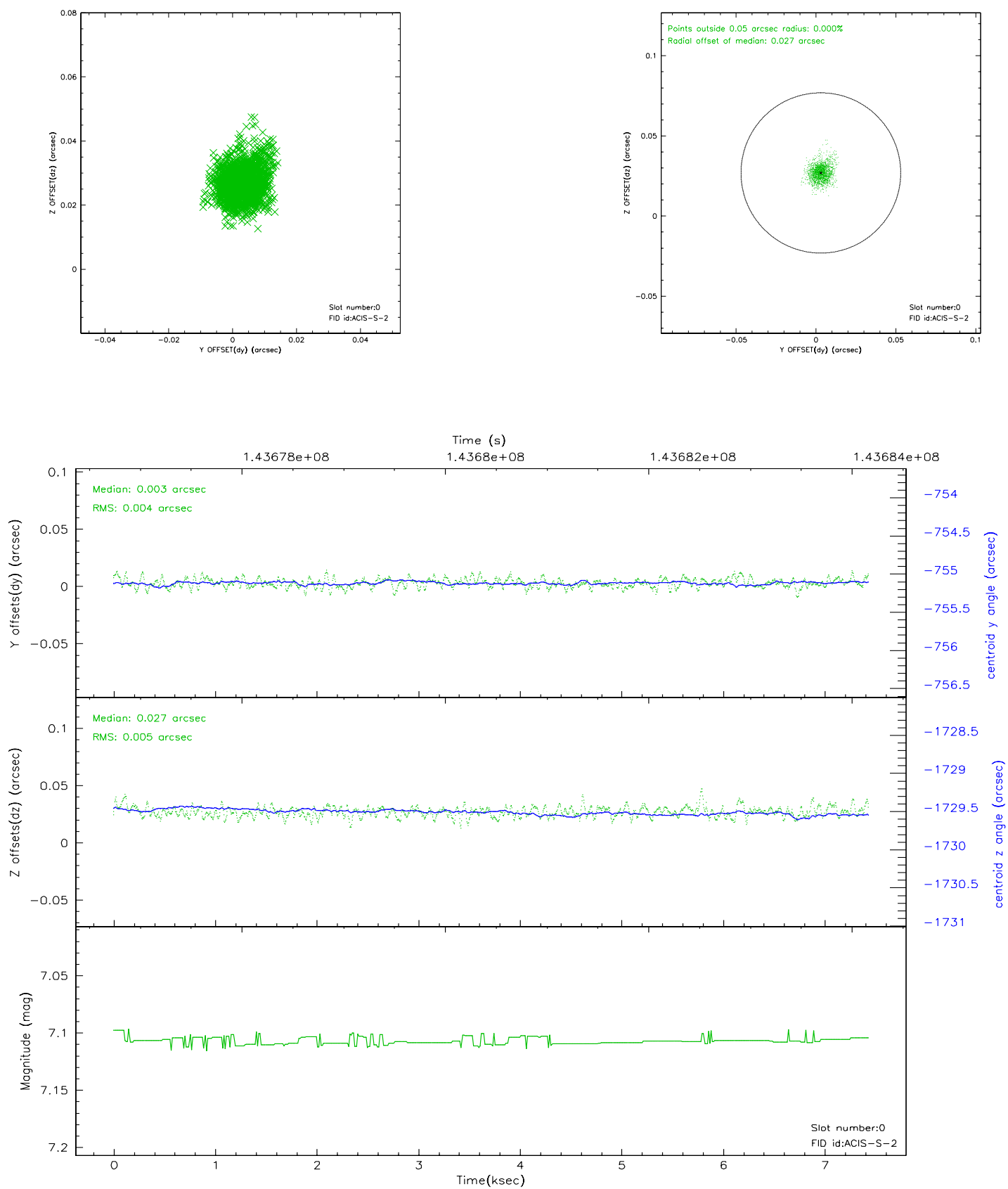


## 2.4.5 Slot 7

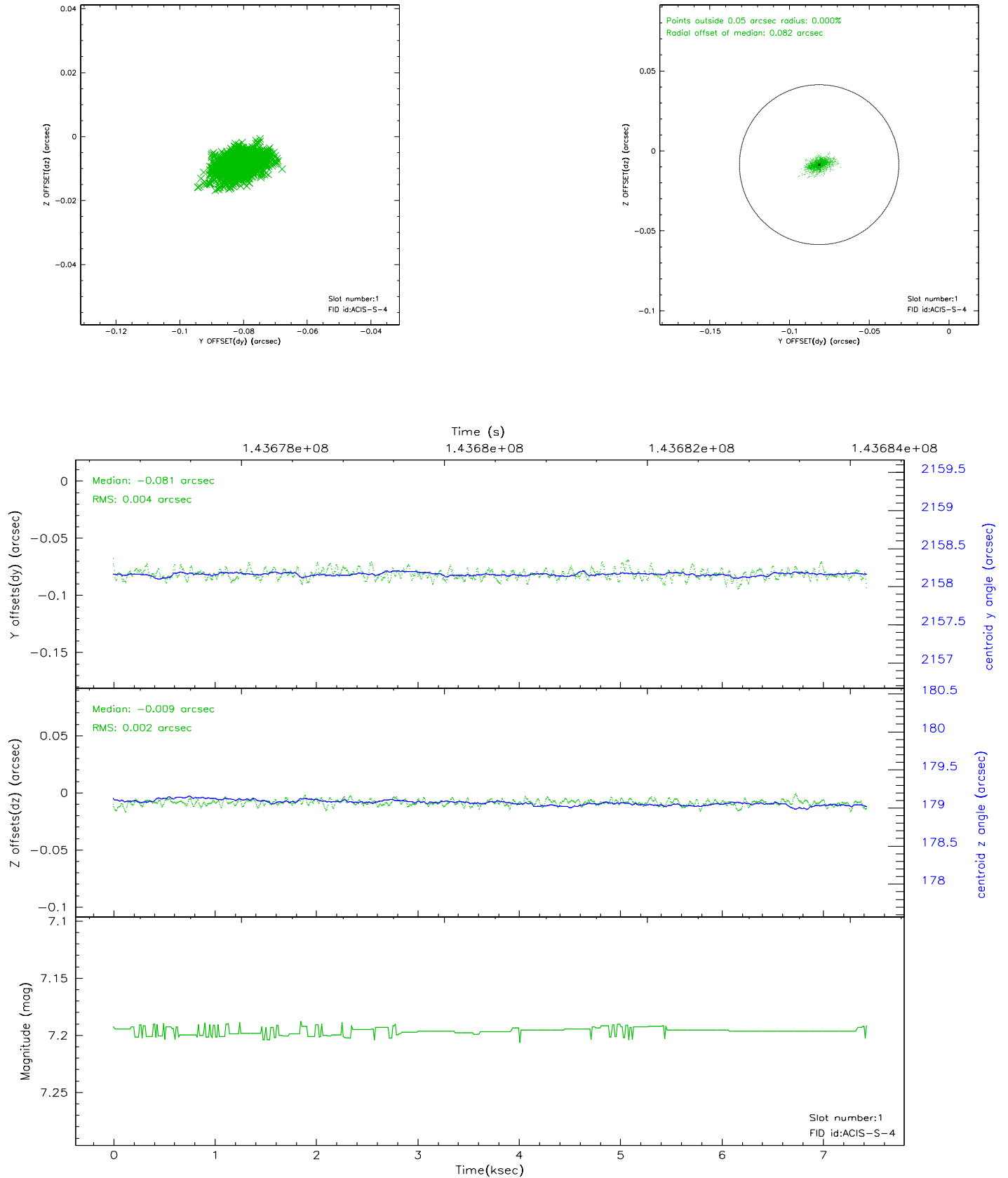


## 2.5 FID Slots

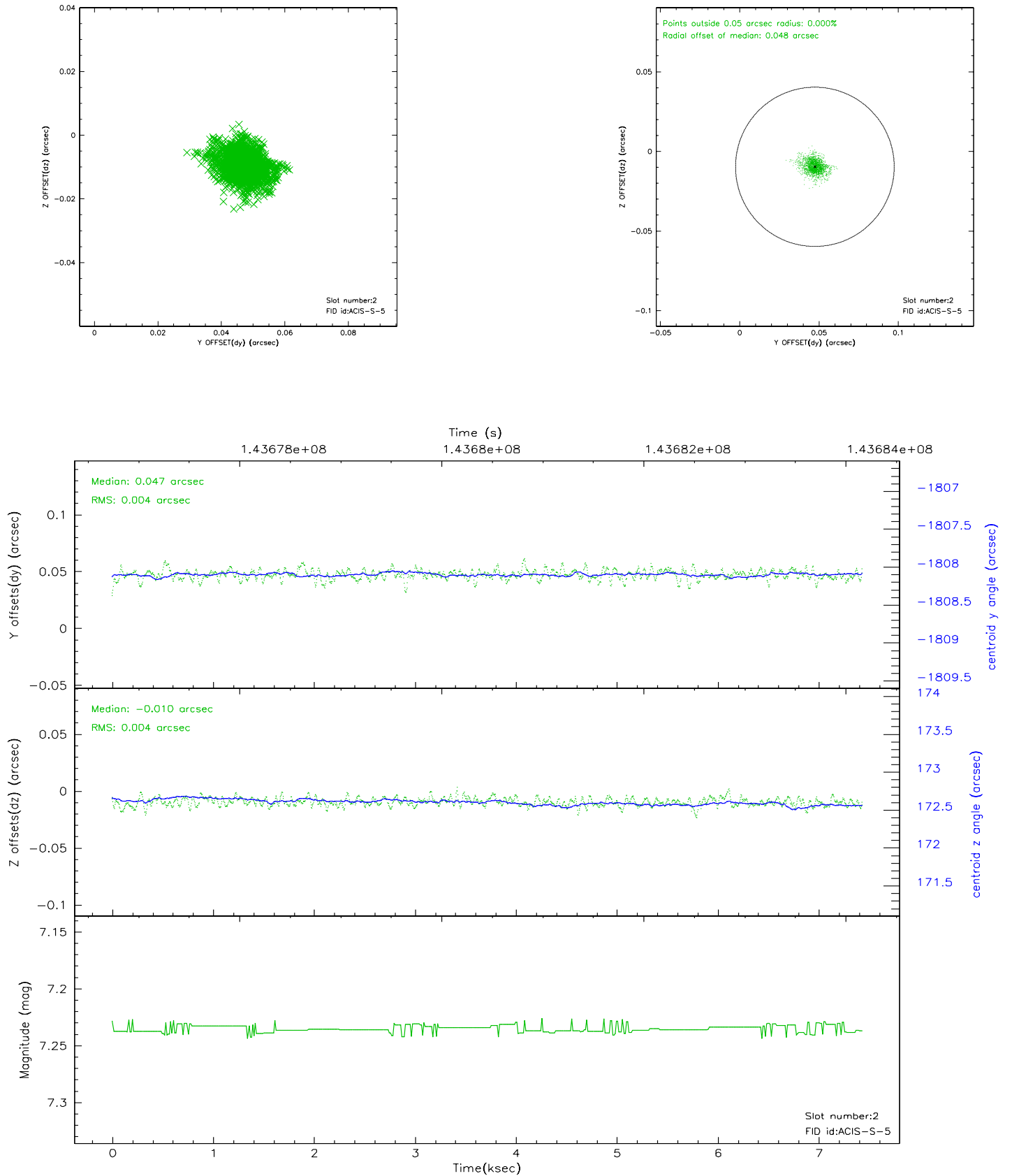
### 2.5.1 Slot 0



## 2.5.2 Slot 1

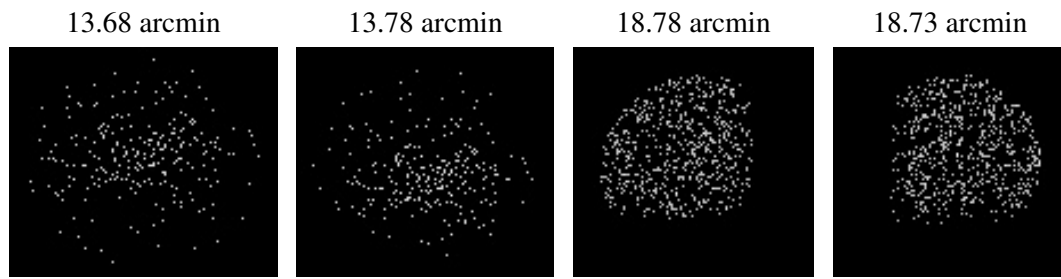


### 2.5.3 Slot 2





### 3 Point Sources



## A Summary

### A.1 Status

V&V Scientist	Jen Lauer
V&V Date (YYYY-MM-DD)	2006.09.26
V&V Edition	1
V&V Disposition and Status	OK
V&V Charge Time	6.761

### A.2 Comments