

# V&V Reference Report

## L2 ASCDS Version : 7.6.8.1

Observation 3068 - L2 Version 001  
Chandra X-Ray Center

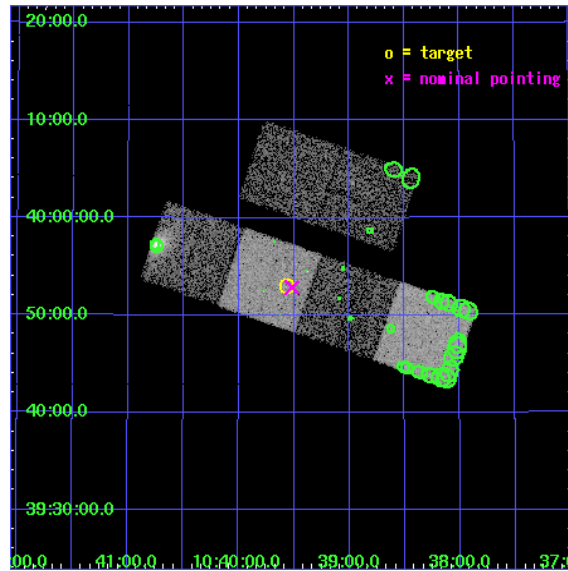
L2 Processing Date : Sep 6 2006

## Contents

<b>1</b>	<b>Front</b>	<b>2</b>
<b>2</b>	<b>OBI</b>	<b>3</b>
2.1	OBI . . . . .	3
2.1.1	Images . . . . .	3
2.1.2	Bias . . . . .	3
2.1.3	Parameters . . . . .	4
2.1.4	Events . . . . .	4
2.2	Compared Parameters . . . . .	5
2.3	Aspect . . . . .	6
2.4	Star Slots . . . . .	9
2.4.1	Slot 3 . . . . .	9
2.4.2	Slot 4 . . . . .	10
2.4.3	Slot 5 . . . . .	11
2.4.4	Slot 6 . . . . .	12
2.4.5	Slot 7 . . . . .	13
2.5	FID Slots . . . . .	14
2.5.1	Slot 0 . . . . .	14
2.5.2	Slot 1 . . . . .	15
2.5.3	Slot 2 . . . . .	16
<b>3</b>	<b>Point Sources</b>	<b>17</b>
<b>A</b>	<b>Summary</b>	<b>18</b>
A.1	Status . . . . .	18
A.2	Comments . . . . .	18

# 1 Front

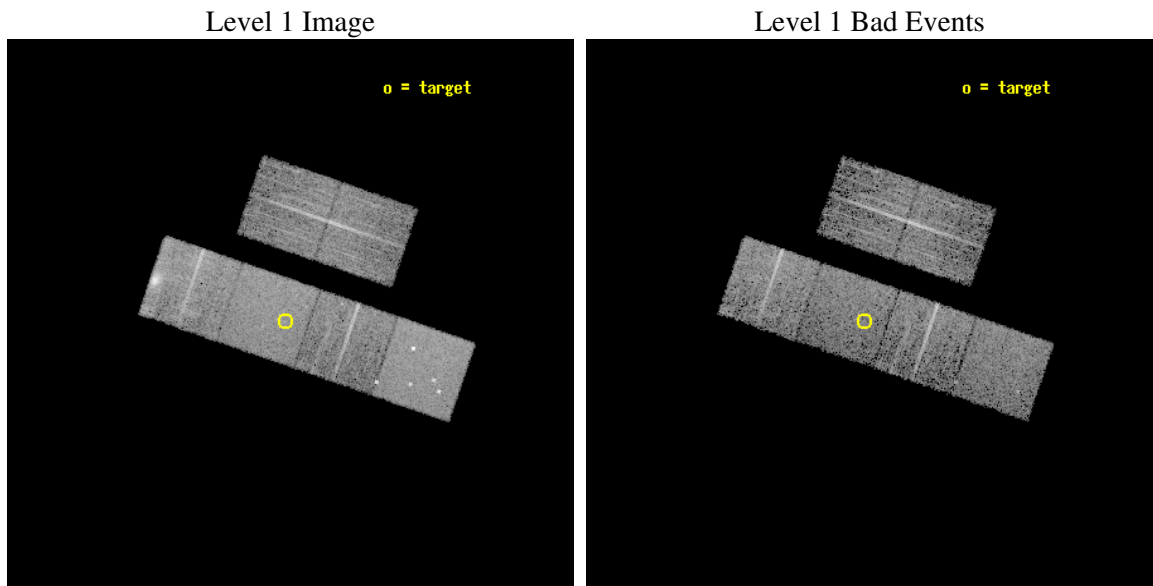
seq_num	700507
obs_id	3068
title	X-RAY WEAK BROAD-LINE QUASARS: ABSORPTION OR INTRINSIC X_RAY WEAKNESS ?
observer	Dr Guido Risaliti
object	HS 1036+4008
dtcycle	0
cycle	P
ra_targ	159.892083
dec_targ	39.882722
ra_nom	159.8794651096
dec_nom	39.881162532059
roll_nom	198.92527632385
revision	2
ontime	6057.6000056416
livetime	5980.8950269213
ontime2	6057.6000056416
ontime3	6057.6000056416
ontime5	6057.6000056416
ontime6	6057.6000056416
ontime7	6057.6000056416
ontime8	6054.3590353876
l2events	65451



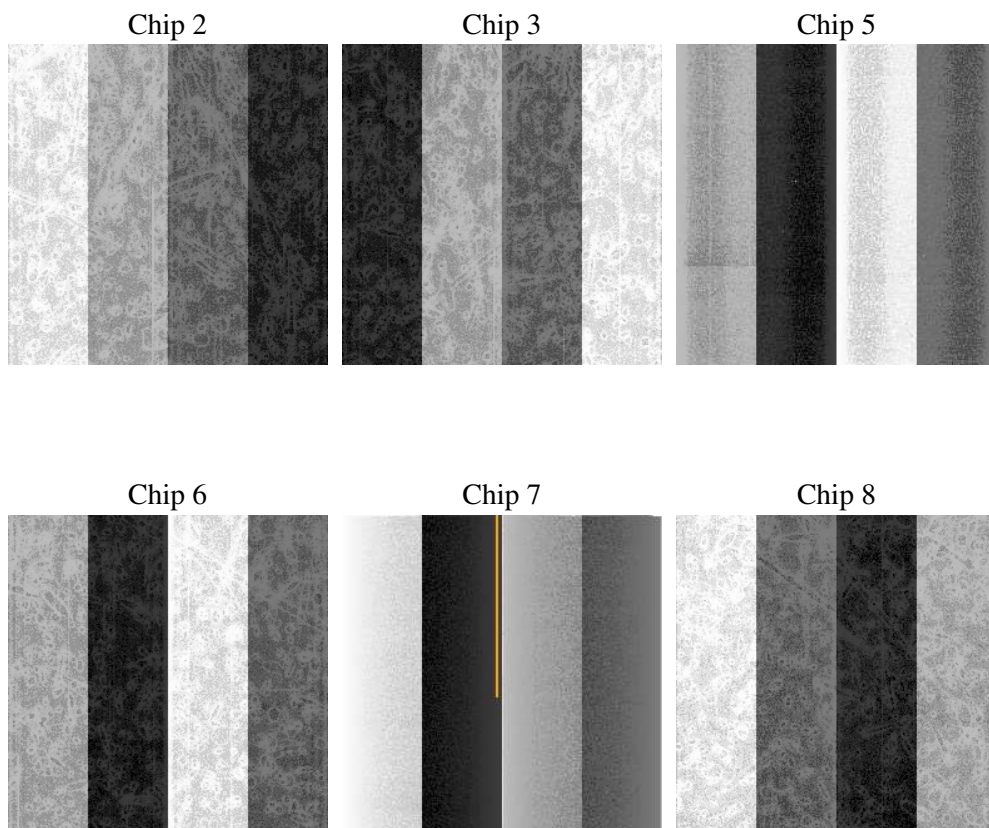
## 2 OBI

### 2.1 OBI

#### 2.1.1 Images



#### 2.1.2 Bias



### 2.1.3 Parameters

obi_num	0
ascdsver	7.6.8.1
caldbver	3.2.3
date	2006-09-06T14:38:09
revision	2

sched_exp_time	6300.000000
ontime	6060.6830551028
ontime2	6060.6830551028
ontime3	6060.6830551028
ontime5	6060.68303518
ontime6	6060.6830551028
ontime7	6060.6830551028
ontime8	6057.4419752657
l1events	298874

### 2.1.4 Events

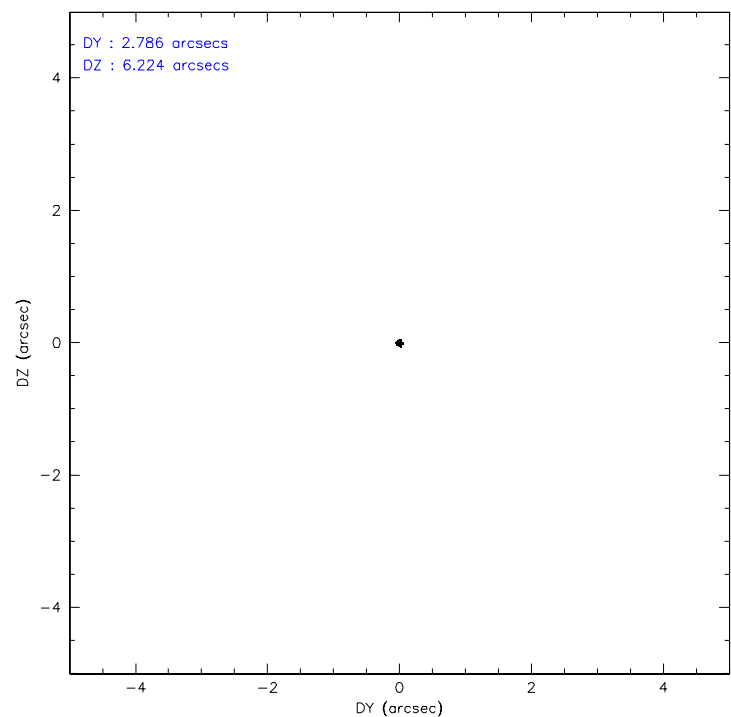
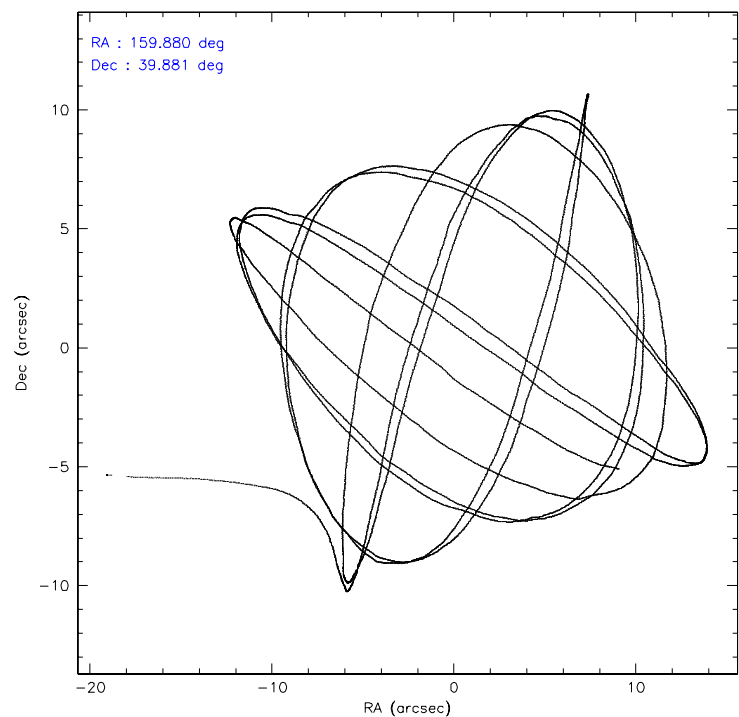
	ccd 2	ccd 3	ccd 5	ccd 6	ccd 7	ccd 8
level 1 events	40862	39807	60884	41263	53535	62523
rejected events	36094	35210	32875	36259	33052	45153
rejected %	88%	88%	53%	87%	61%	72%

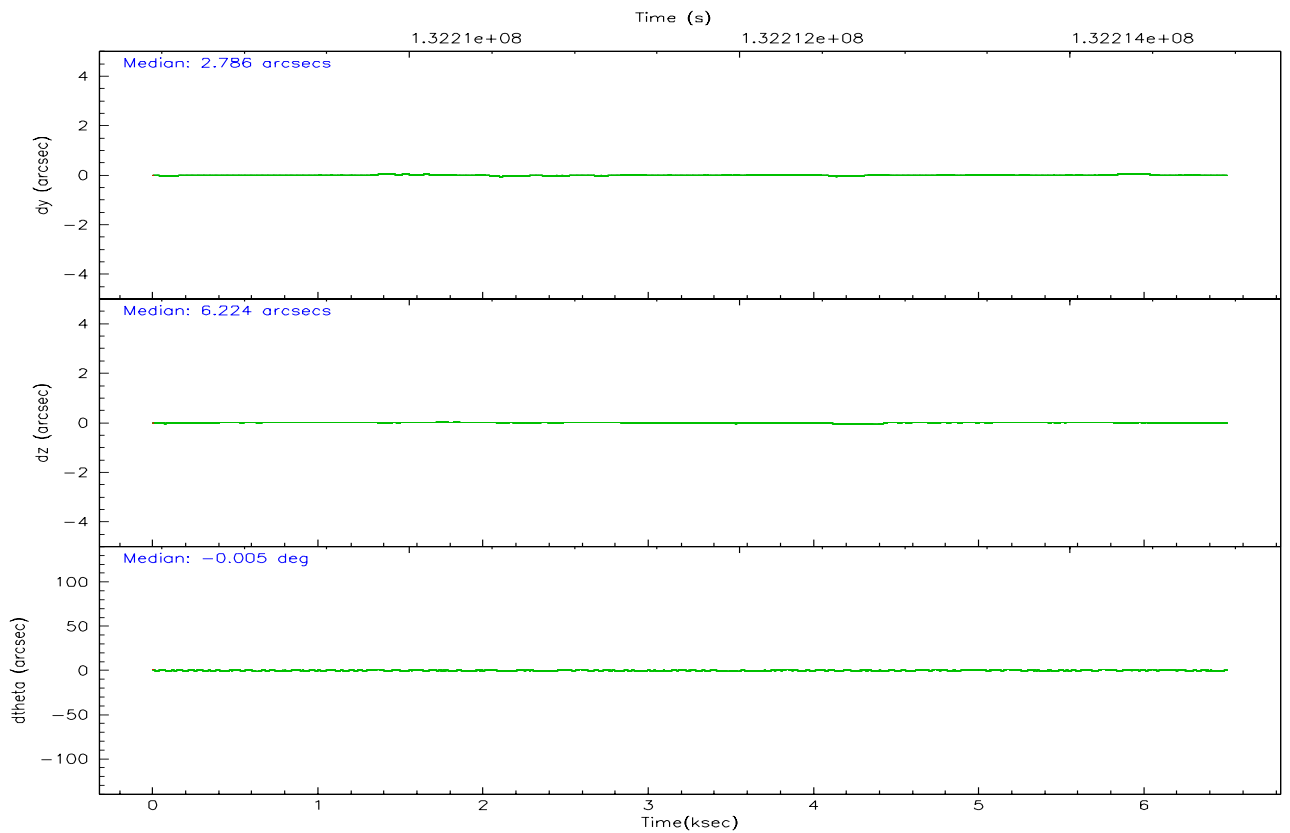
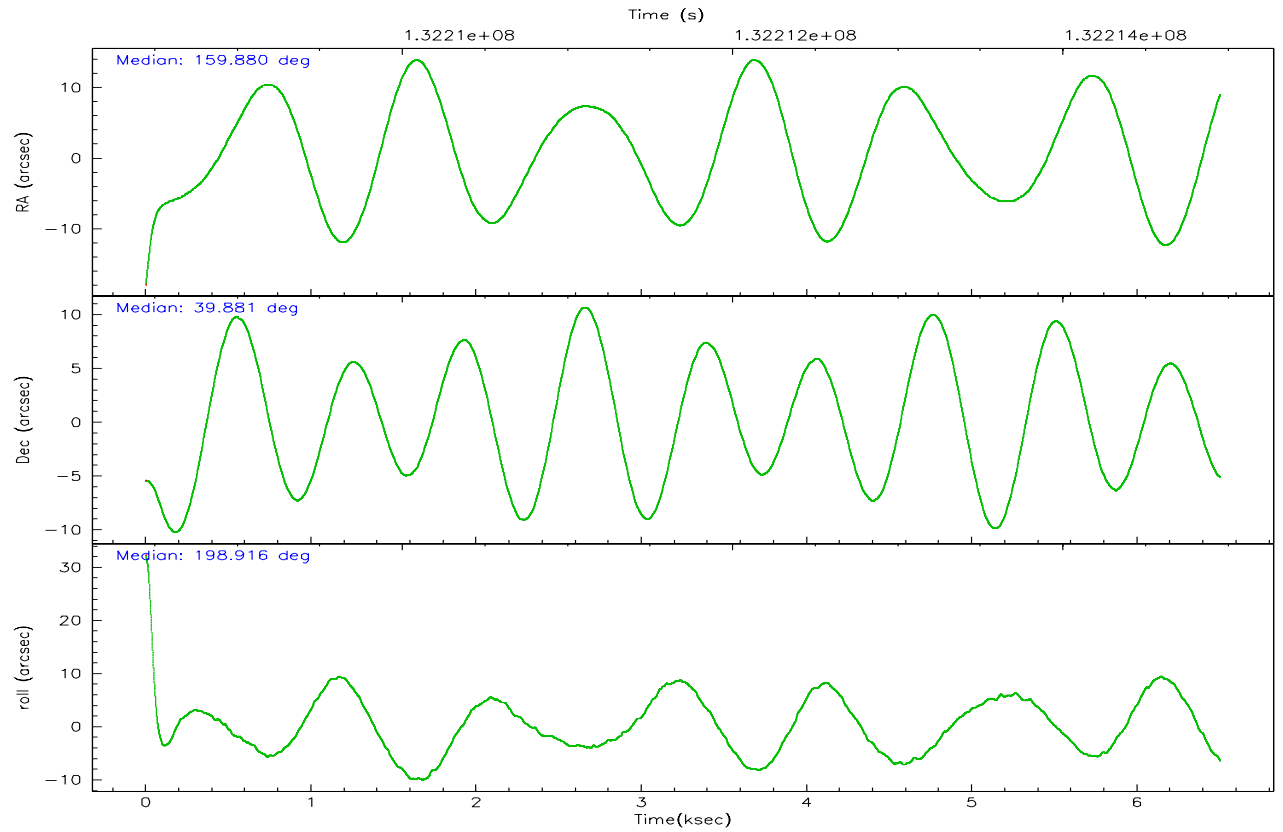
	ccd 2	ccd 3	ccd 5	ccd 6	ccd 7	ccd 8
grade 0 events	2018	1885	3718	2113	1271	8455
	4%	4%	6%	5%	2%	13%
grade 1 events	19	17	66	18	31	65
	0%	0%	0%	0%	0%	0%
grade 2 events	1033	977	8345	976	5037	2907
	2%	2%	13%	2%	9%	4%
grade 3 events	426	420	644	498	1053	1500
	1%	1%	1%	1%	1%	2%
grade 4 events	428	444	616	465	987	1423
	1%	1%	1%	1%	1%	2%
grade 5 events	1439	1596	3035	1810	3417	2199
	3%	4%	4%	4%	6%	3%
grade 6 events	869	874	14705	954	12149	3090
	2%	2%	24%	2%	22%	4%
grade 7 events	34630	33594	29755	34429	29590	42884
	84%	84%	48%	83%	55%	68%

## 2.2 Compared Parameters

Parameter	Planned	Actual	Parameter	Planned	Actual
Instrument	ACIS	ACIS	Obspar format version number	6	6
Detector	ACIS-235678	ACIS-235678	Obspar file type	PREDICTED	ACTUAL
Grating	NONE	NONE	Obspar update status	NONE	UPDATED
Data mode	FAINT	FAINT	On-chip summing requested	N	N
Observation mode	POINTING	POINTING	Subarray requested	NONE	NONE
Pointing RA	159.902586	159.8794651096012	Alternating exposures requested	N	N
Pointing Dec	39.902000	39.88116253205947	Primary exposure time	0.000000	3.2
Pointing Roll	198.753742	198.9252763238499			
SIM focus pos (mm)	-0.684267	-0.6828225247311905			
SIM defocus (mm)	0	0.001444936568705701			
SIM translation stage pos (mm)	-190.132523	-190.1425803651734			
SIM translation stage offset (mm)	0	0.01005778216563158			
Observation start time	132208654.184000	132207892.89037			
Observation start date	2002-03-11T04:36:30	2002-03-11T04:24:52			
Observation end time	132214954.184000	132215369.24068			
Observation end date	2002-03-11T06:21:30	2002-03-11T06:29:29			
Read mode	TIMED	TIMED			

2.3 Aspect





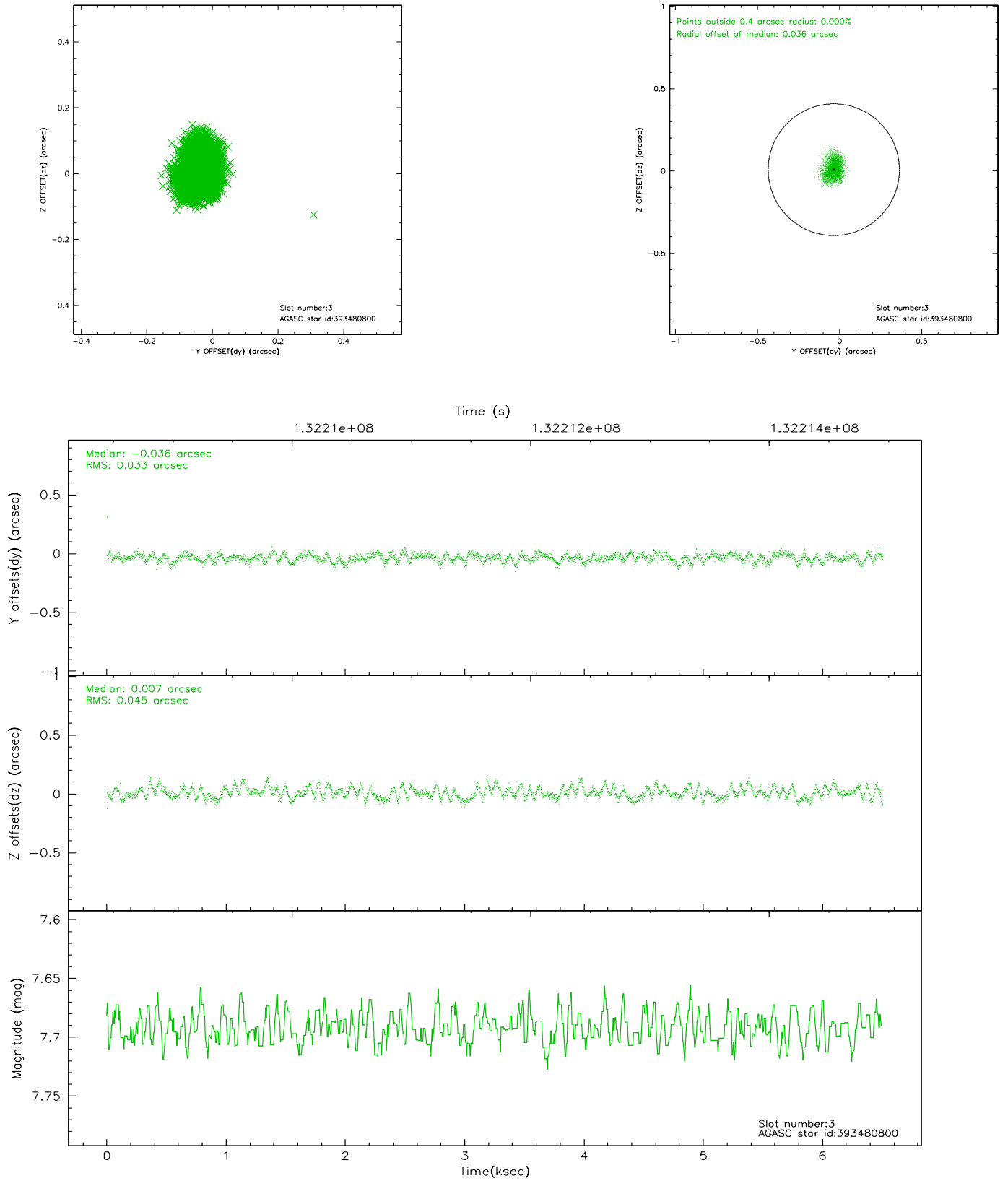
### Slot Statistics

slot	status	id	mag	n_pts	med_dy	med_dz	dr1	dr2	ra	dec	mean_y	mean_z
0	FID	ACIS-S-2	7.12	1587	-0.023	0.035	0.007	0.011	0.000000	0.000000	-755.41	-1727.30
1	FID	ACIS-S-4	7.20	1587	-0.068	0.002	0.005	0.009	0.000000	0.000000	2157.38	180.29
2	FID	ACIS-S-5	7.24	1587	0.060	-0.028	0.006	0.010	0.000000	0.000000	-1807.05	174.87
3	GUIDE	393480800	7.69	3173	-0.036	0.007	0.060	0.095	159.955558	39.404672	435.92	1742.94
4	GUIDE	393871976	8.28	3173	-0.085	0.053	0.087	0.131	159.531285	40.437247	343.99	-2152.90
5	GUIDE	393878472	8.50	3173	0.167	-0.087	0.077	0.122	159.653339	40.322119	161.95	-1653.53
6	GUIDE	394405296	8.72	3172	0.024	-0.023	0.143	0.206	160.050441	40.278361	-819.79	-1153.22
7	GUIDE	394407680	9.15	3170	-0.063	0.057	0.098	0.158	160.045368	40.603600	-1181.53	-2266.82

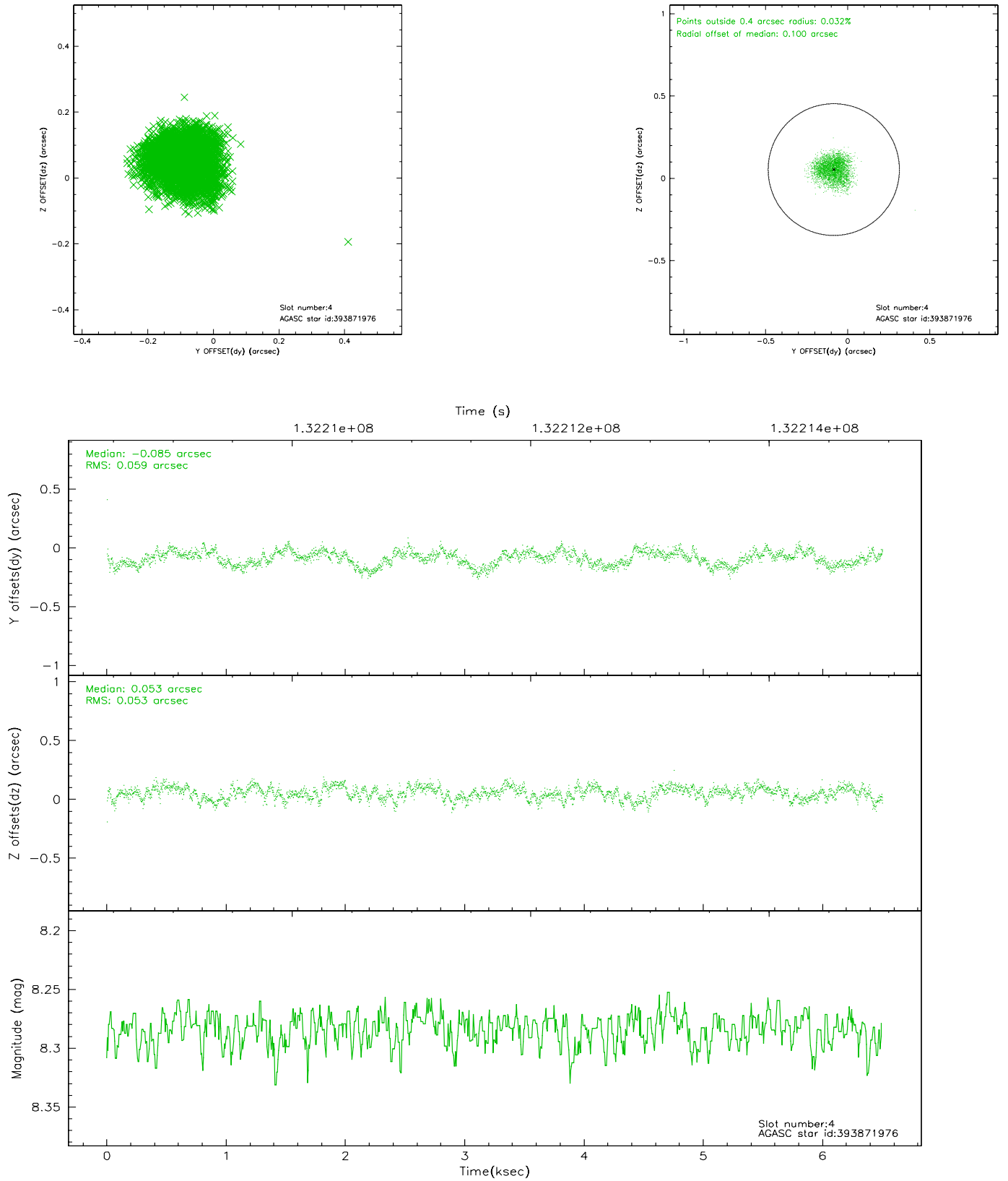


## 2.4 Star Slots

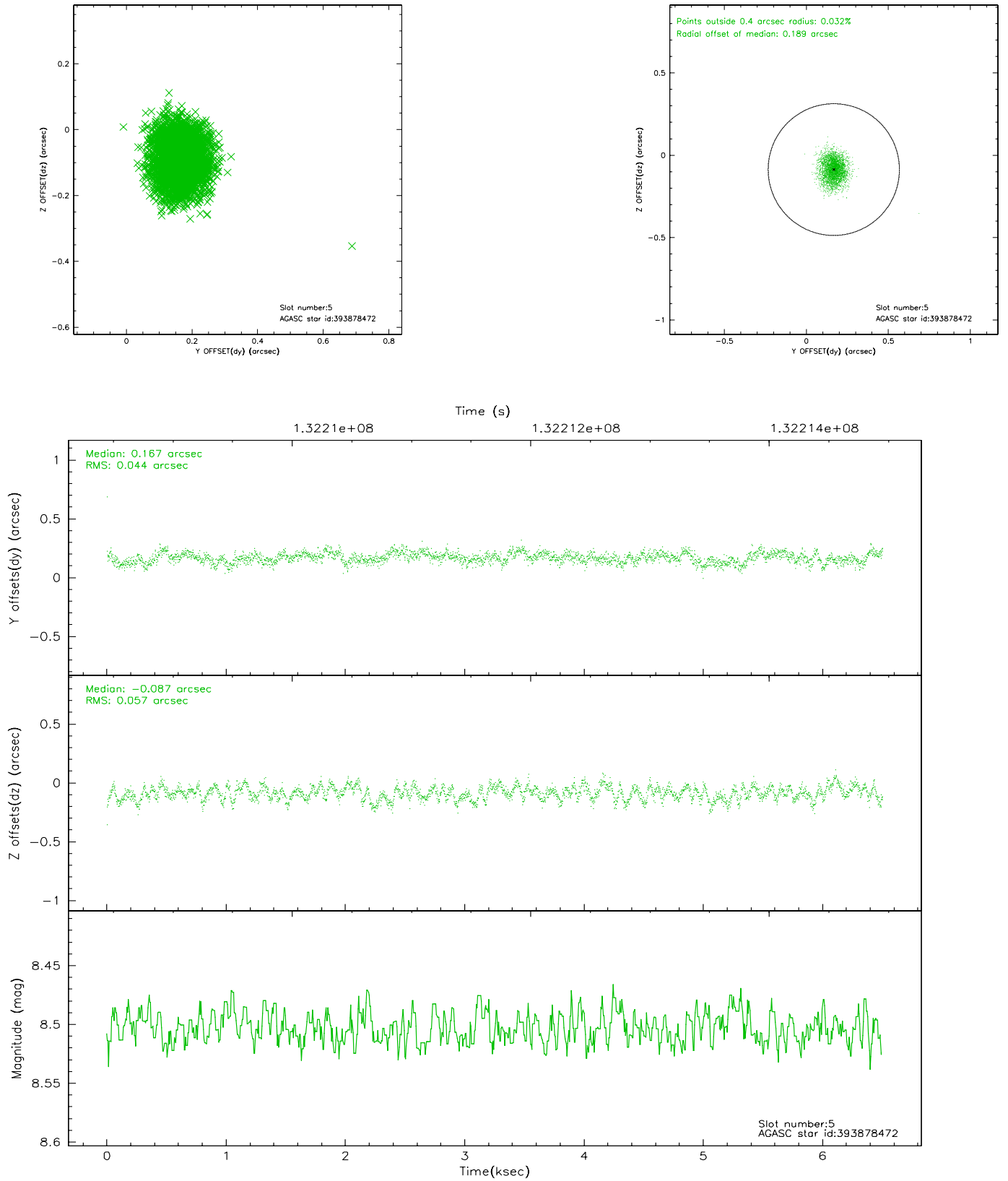
### 2.4.1 Slot 3



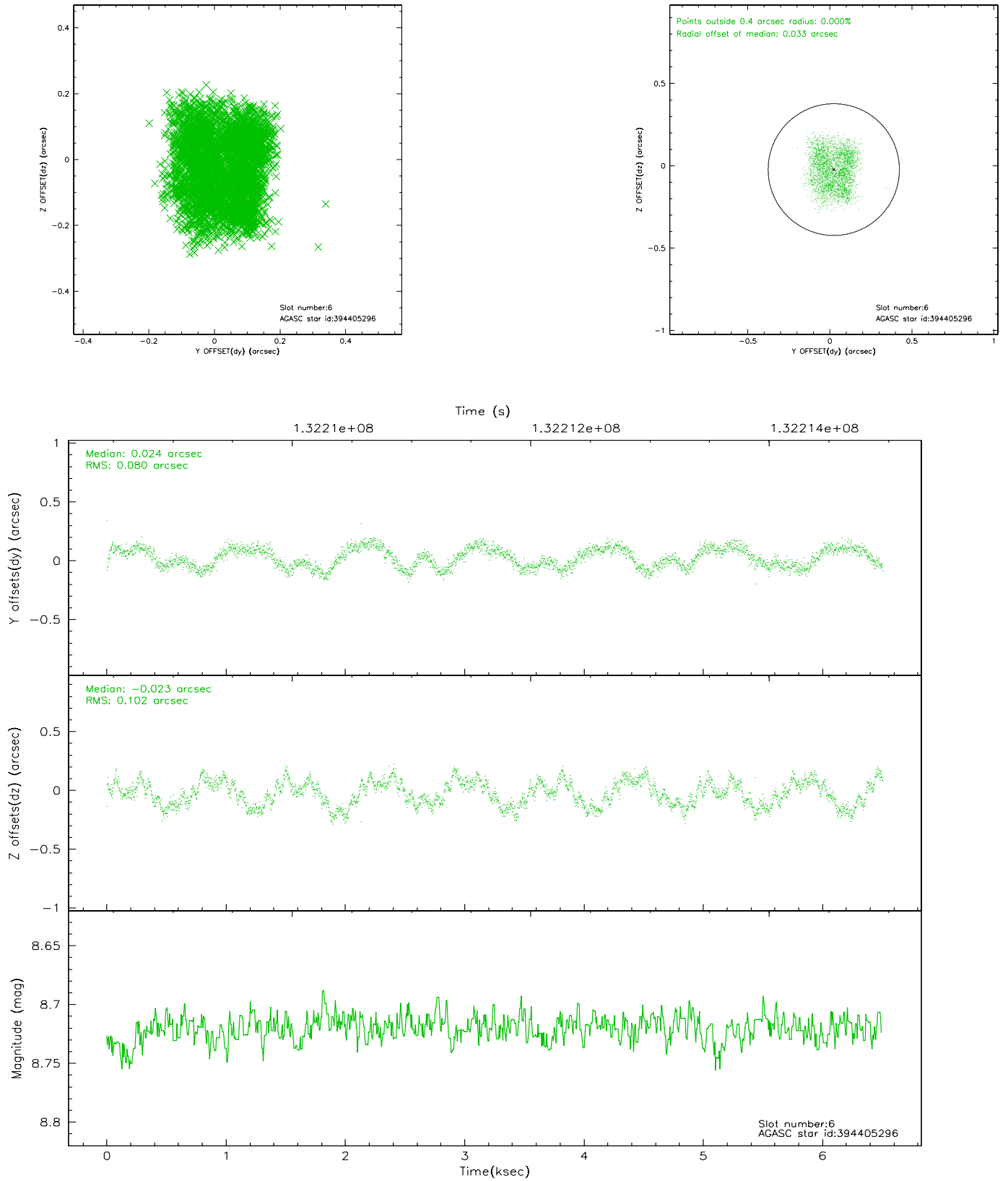
## 2.4.2 Slot 4



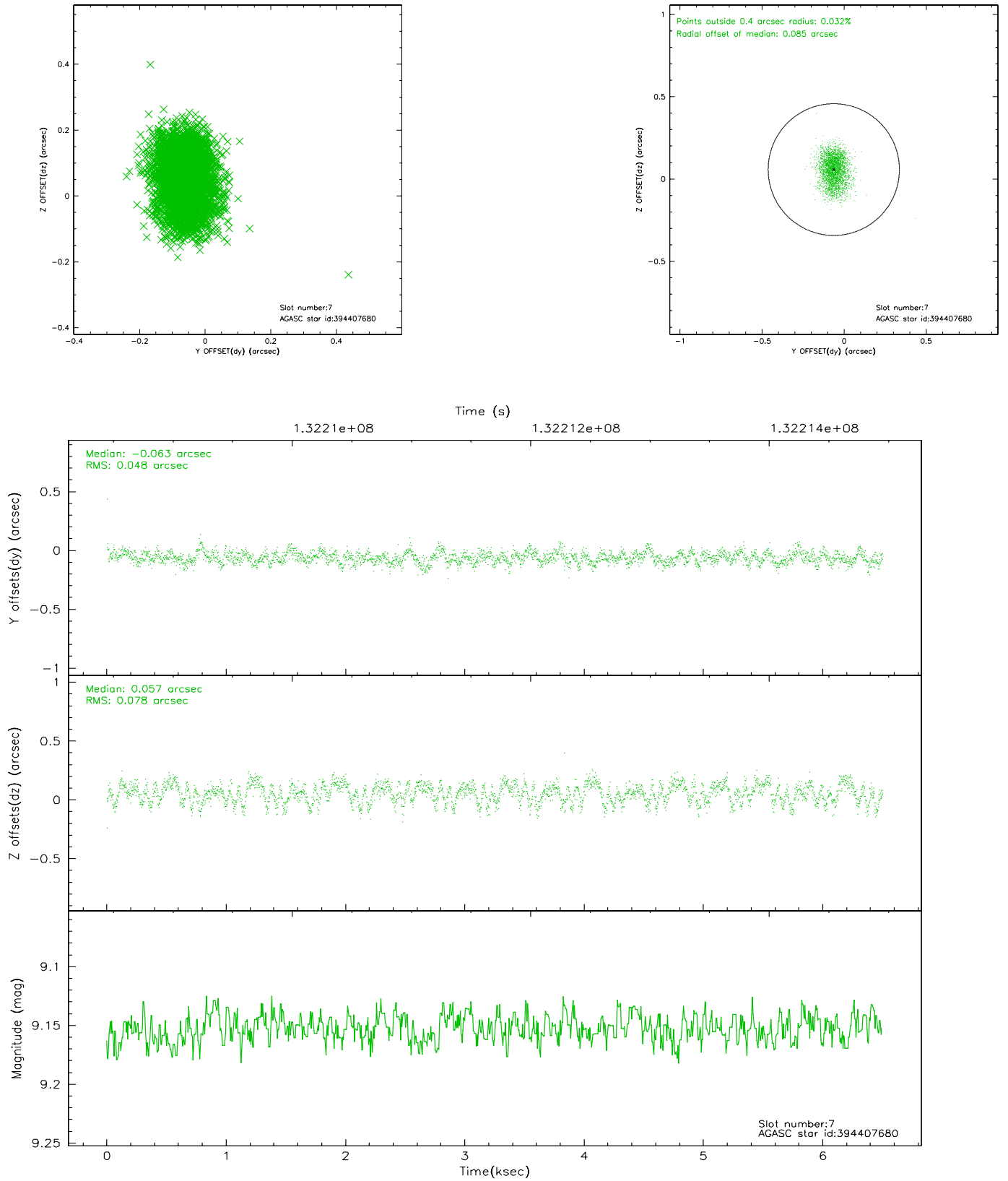
### 2.4.3 Slot 5



## 2.4.4 Slot 6

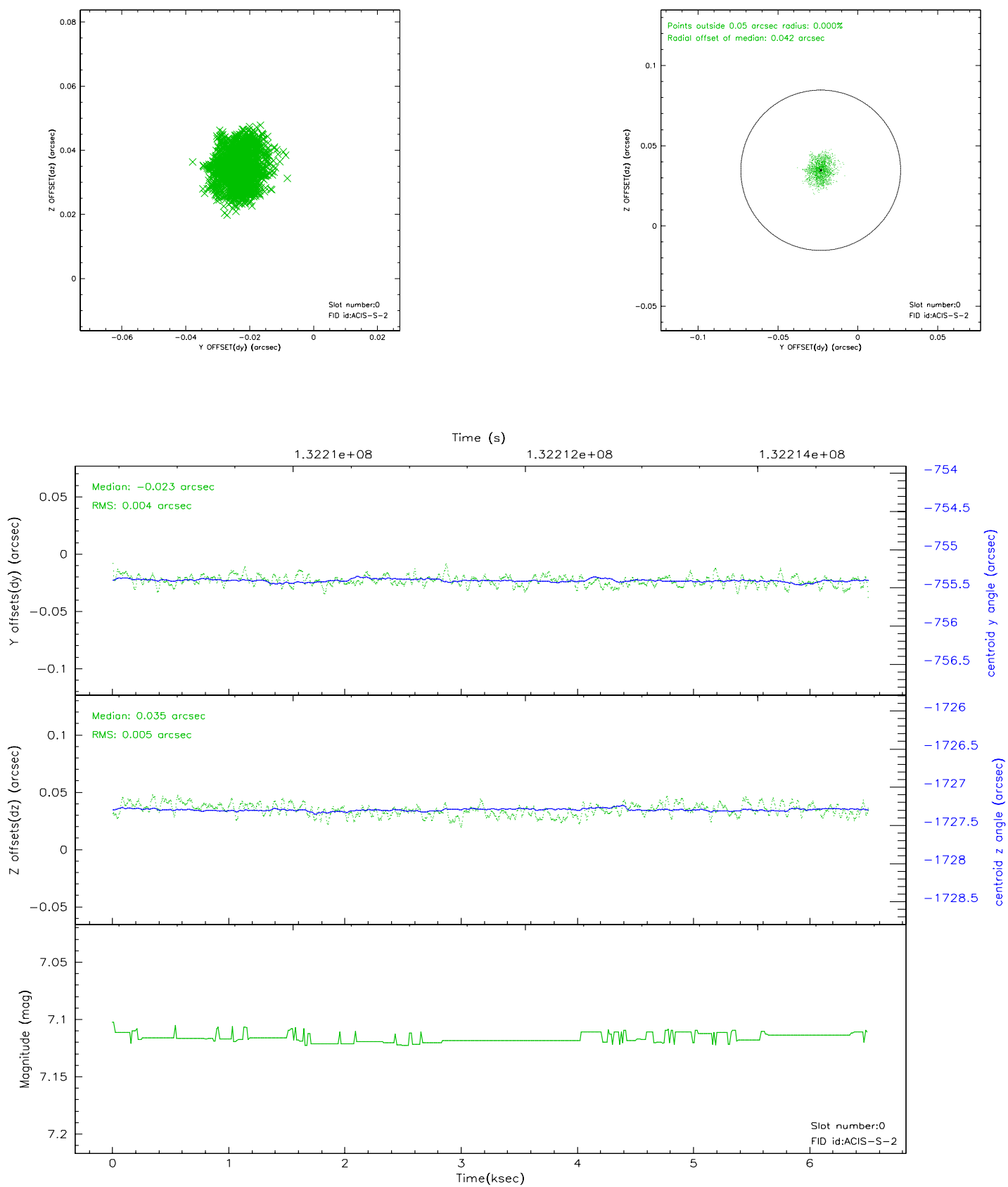


## 2.4.5 Slot 7

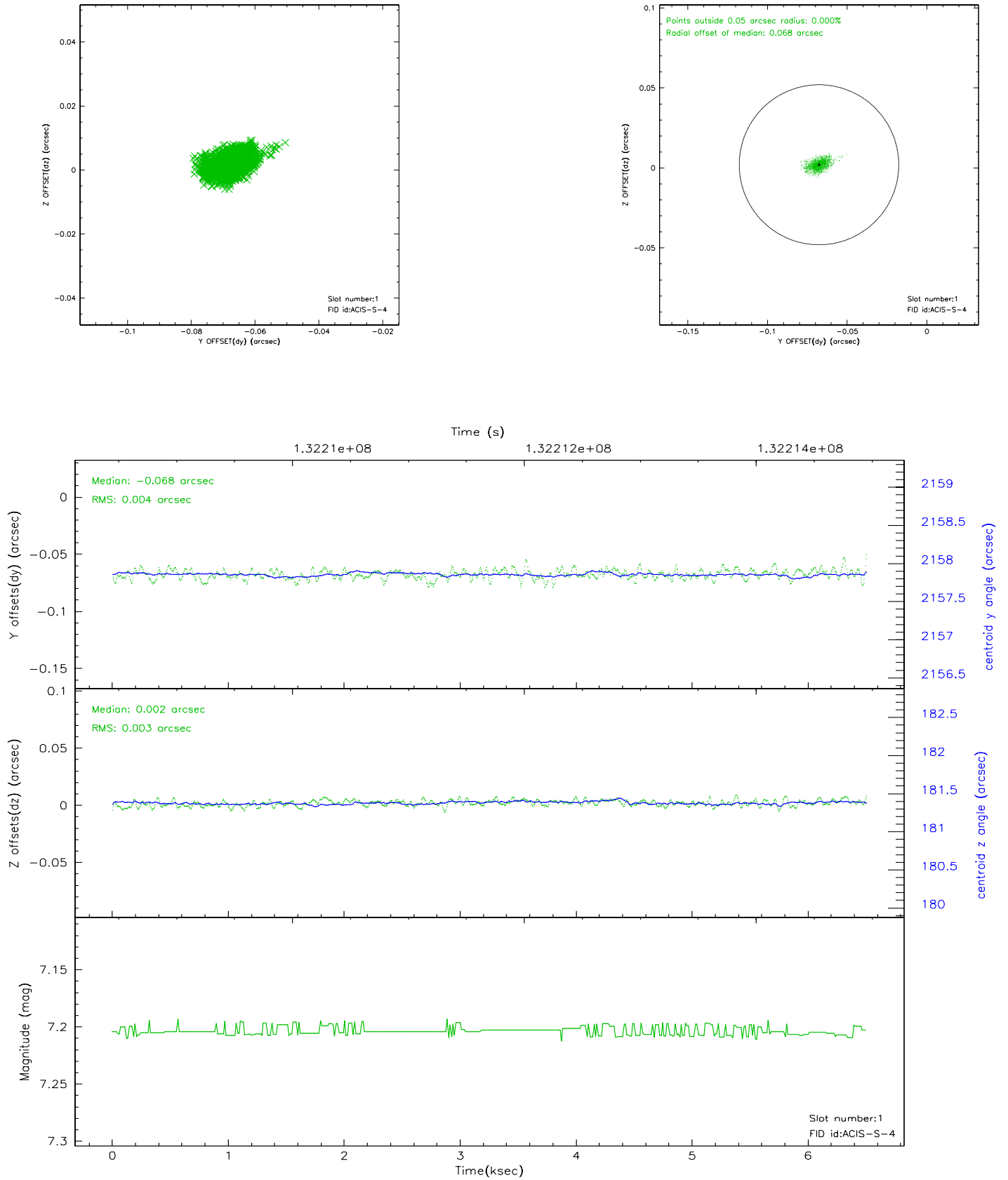


## 2.5 FID Slots

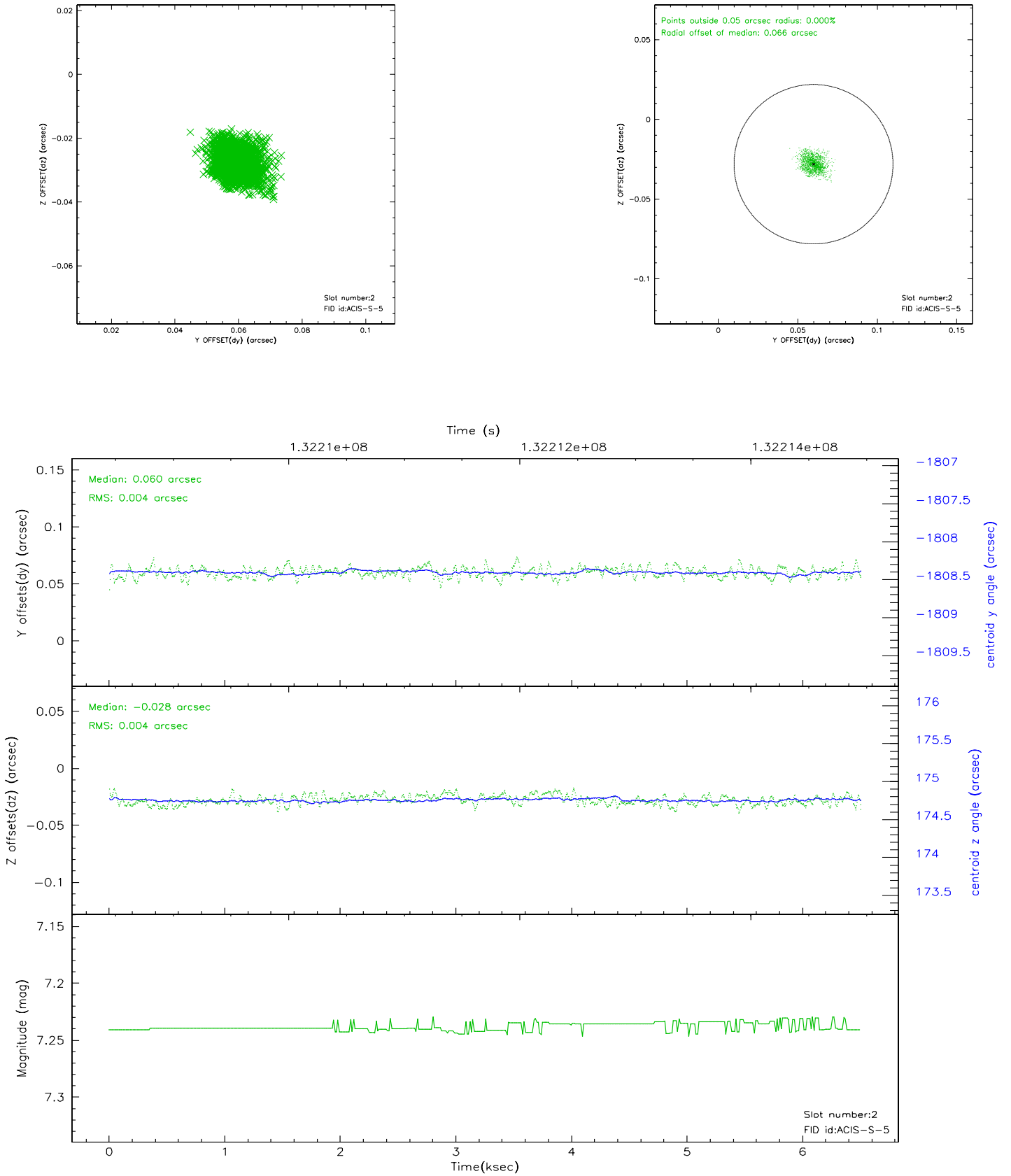
### 2.5.1 Slot 0



## 2.5.2 Slot 1

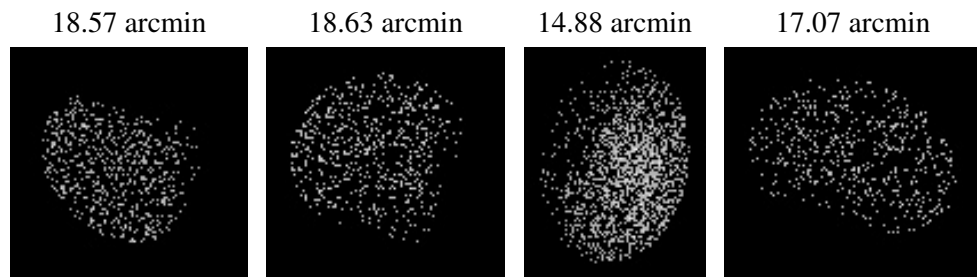


### 2.5.3 Slot 2





### 3 Point Sources



## A Summary

### A.1 Status

V&V Scientist	Jen Lauer
V&V Date (YYYY-MM-DD)	2006.09.06
V&V Edition	1
V&V Disposition and Status	OK
V&V Charge Time	6.057

### A.2 Comments