

V&V Reference Report

L2 ASCDS Version : 7.6.9

Observation 3039 - L2 Version 001
Chandra X-Ray Center

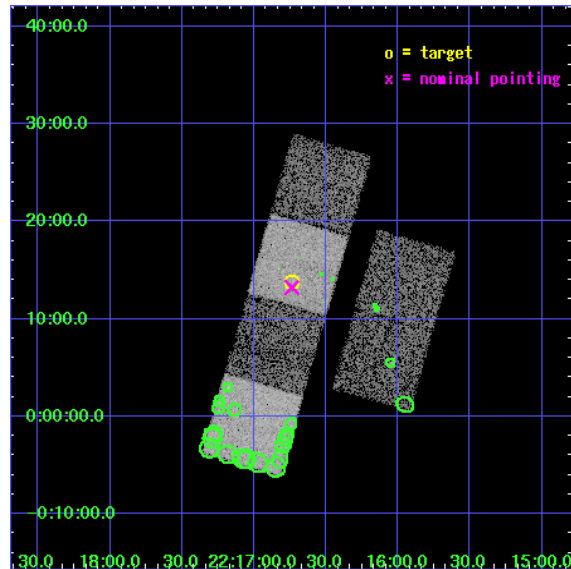
L2 Processing Date : Oct 12 2006

Contents

1	Front	2
2	OBI	3
2.1	OBI	3
2.1.1	Images	3
2.1.2	Bias	3
2.1.3	Parameters	4
2.1.4	Events	4
2.2	Compared Parameters	5
2.3	Aspect	6
2.4	Star Slots	9
2.4.1	Slot 4	9
2.4.2	Slot 5	10
2.4.3	Slot 6	11
2.4.4	Slot 7	12
2.5	FID Slots	13
2.5.1	Slot 0	13
2.5.2	Slot 1	14
2.5.3	Slot 2	15
3	Point Sources	16
A	Summary	17
A.1	Status	17
A.2	Comments	17

1 Front

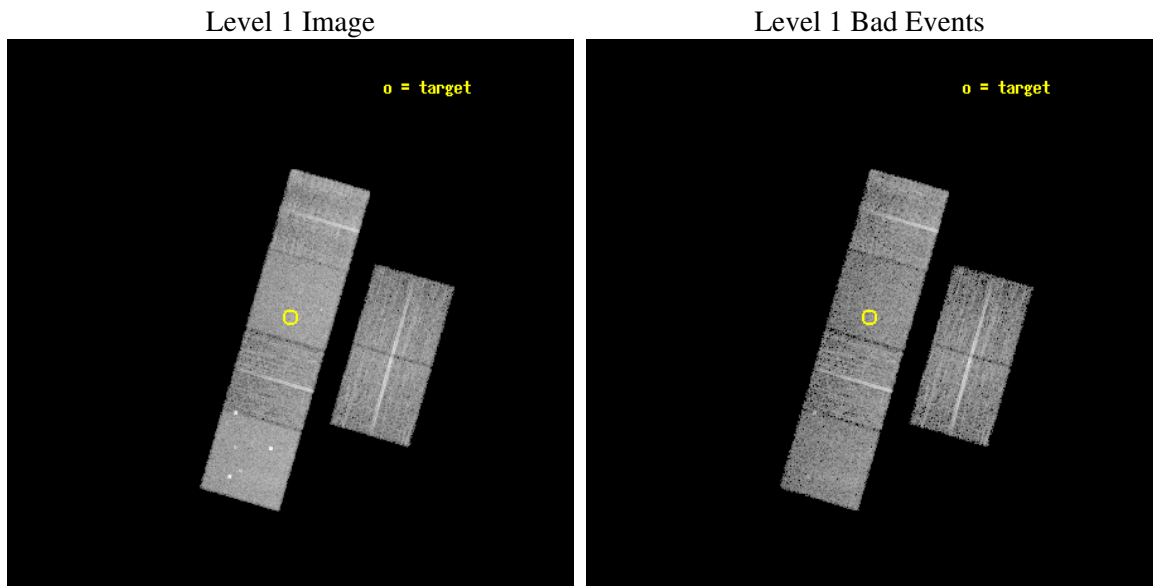
seq_num	700478
obs_id	3039
title	A CHANDRA AND XMM-NEWTON STUDY OF THE MOST DISTANT QUASARS: X-RAYING THE FIRST MASSIVE BLACK HOLES
observer	Prof. William Brandt
object	SDSS221644+001348
dtcycle	0
cycle	P
ra_targ	334.183333
dec_targ	0.230083
ra_nom	334.18439362277
dec_nom	0.2204594180352
roll_nom	286.19845071488
revision	3
ontime	7503.9999720454
livetime	7408.9798060331
ontime2	7503.9999720454
ontime3	7503.9999720454
ontime5	7503.9999720454
ontime6	7503.9999720454
ontime7	7503.9999720454
ontime8	7500.7590017617
l2events	74534



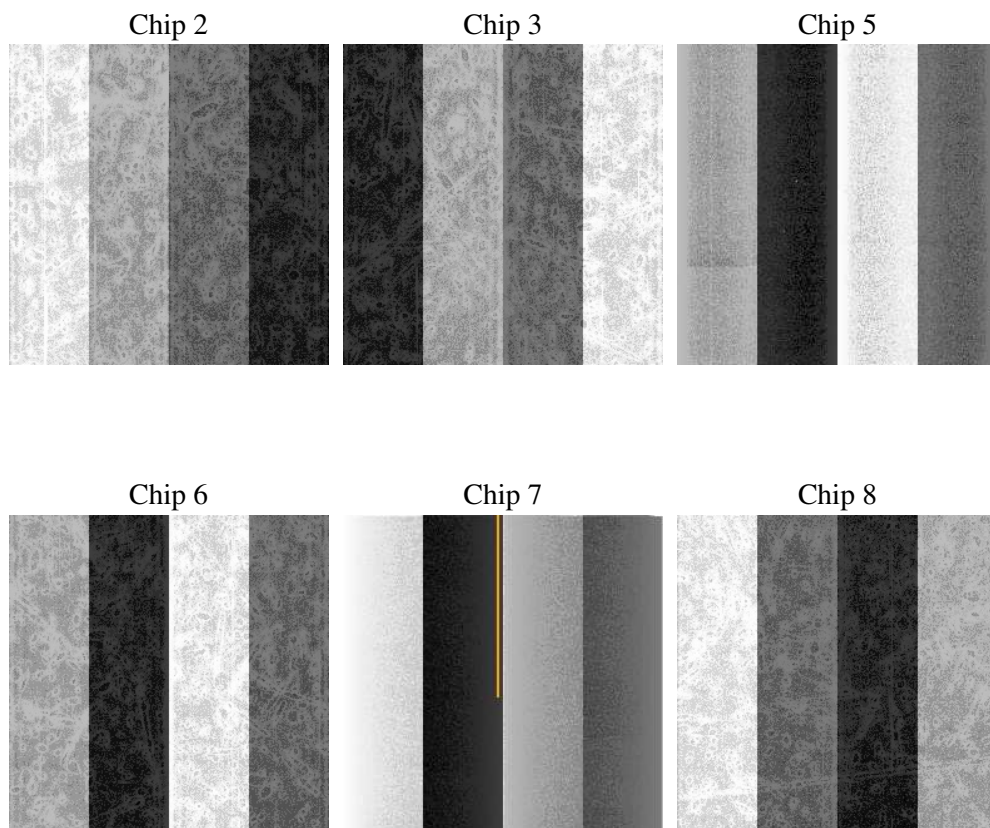
2 OBI

2.1 OBI

2.1.1 Images



2.1.2 Bias



2.1.3 Parameters

obi_num	1
ascdsver	7.6.9
caldsver	3.2.3
date	2006-10-12T14:31:56
revision	3

sched_exp_time	7750.000000
ontime	7509.4010618925
ontime2	7509.401031971
ontime3	7509.401031971
ontime5	7509.4010618925
ontime6	7509.401031971
ontime7	7509.4010618925
ontime8	7506.1599720716
l1events	348060

2.1.4 Events

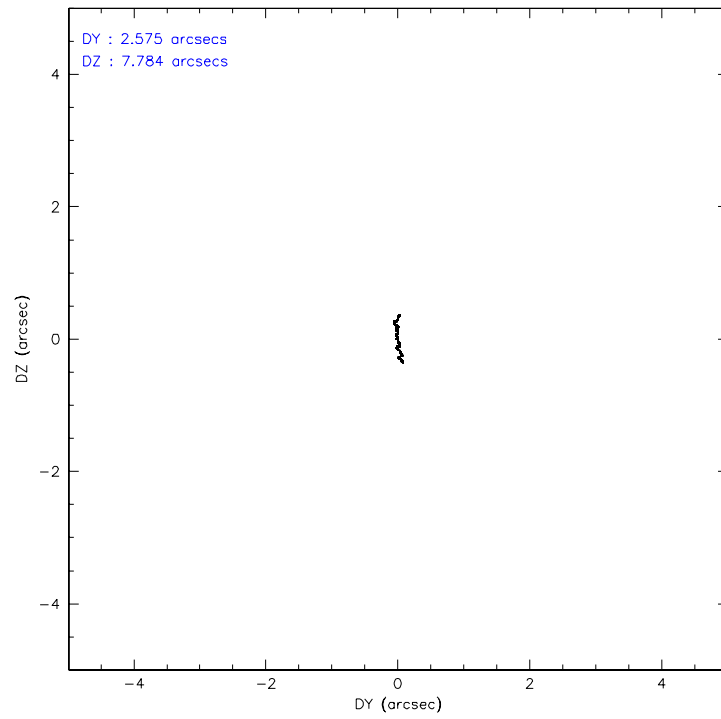
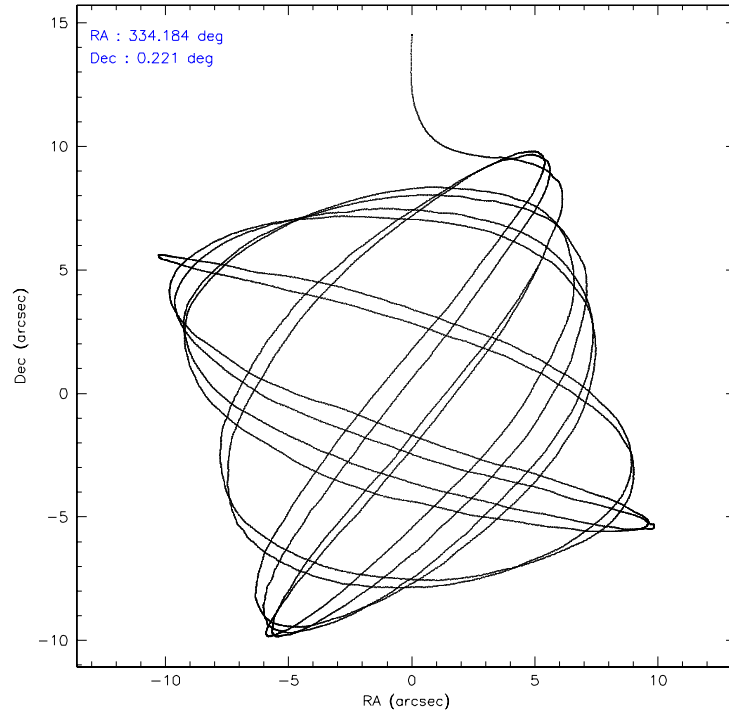
	ccd 2	ccd 3	ccd 5	ccd 6	ccd 7	ccd 8
level 1 events	51951	46087	71742	49892	63953	64435
rejected events	46067	40296	39144	43897	39199	50229
rejected %	88%	87%	54%	87%	61%	77%

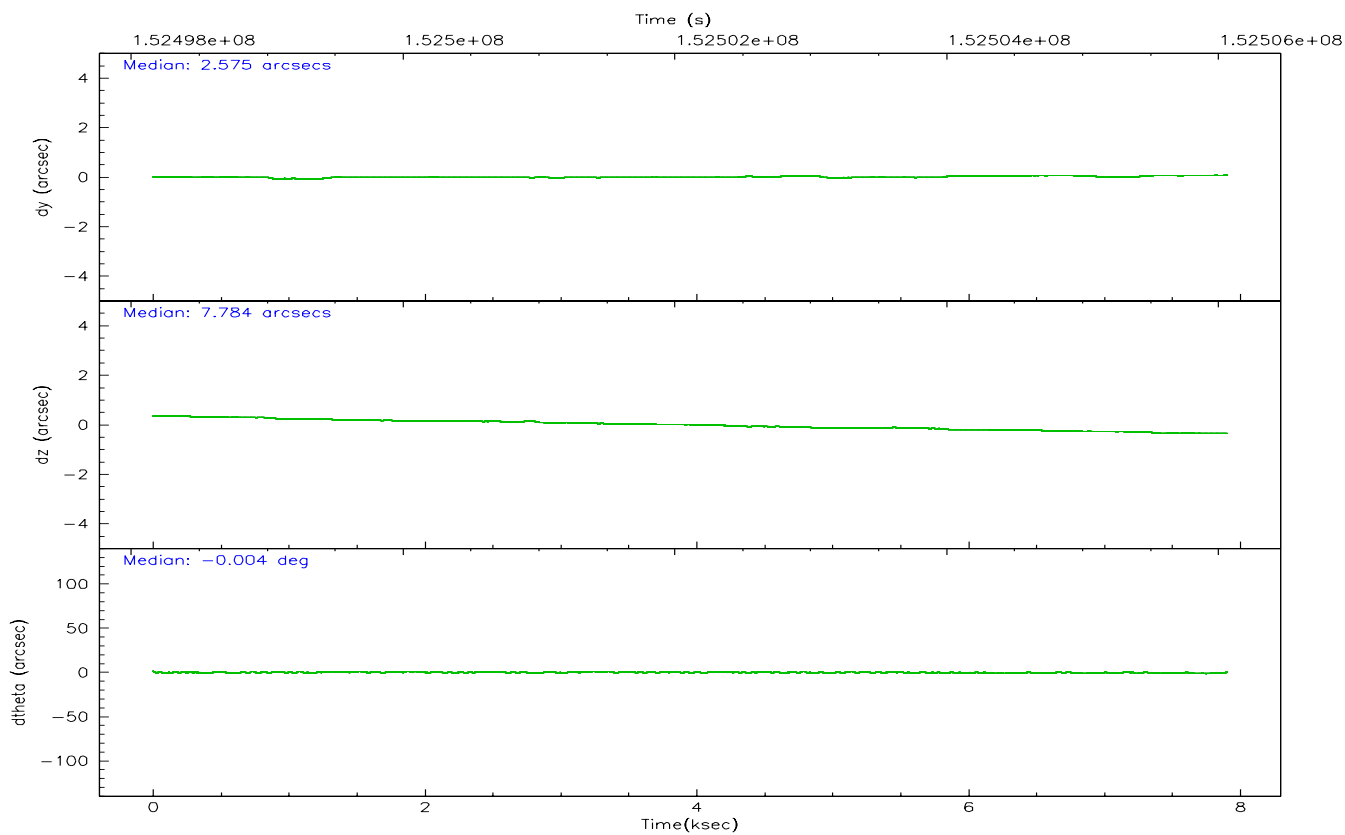
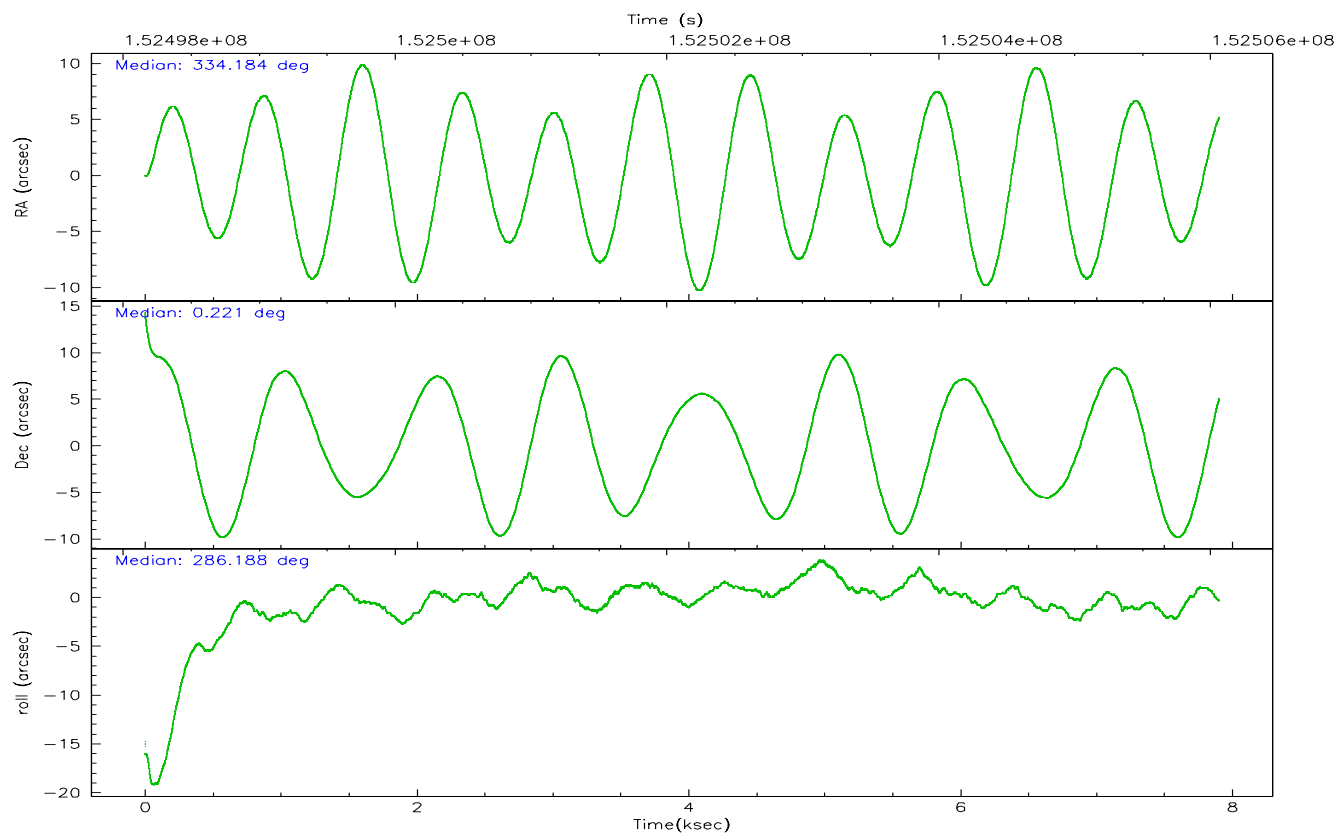
	ccd 2	ccd 3	ccd 5	ccd 6	ccd 7	ccd 8
grade 0 events	2663	2621	3576	2499	1504	4665
	5%	5%	4%	5%	2%	7%
grade 1 events	28	28	133	21	42	54
	0%	0%	0%	0%	0%	0%
grade 2 events	1135	1060	9739	1247	6294	2777
	2%	2%	13%	2%	9%	4%
grade 3 events	528	528	741	561	1274	1774
	1%	1%	1%	1%	1%	2%
grade 4 events	551	592	703	554	1250	1629
	1%	1%	0%	1%	1%	2%
grade 5 events	1932	1977	3448	2145	4186	2735
	3%	4%	4%	4%	6%	4%
grade 6 events	1012	996	17882	1139	14452	3365
	1%	2%	24%	2%	22%	5%
grade 7 events	44102	38285	35520	41726	34951	47436
	84%	83%	49%	83%	54%	73%

2.2 Compared Parameters

Parameter	Planned	Actual	Parameter	Planned	Actual
Instrument	ACIS	ACIS	Obspar format version number	6	6
Detector	ACIS-235678	ACIS-235678	Obspar file type	PREDICTED	ACTUAL
Grating	NONE	NONE	Obspar update status	NONE	UPDATED
Data mode	FAINT	FAINT	Number of optional ACIS chips dropped	0	0
Observation mode	POINTING	POINTING	On-chip summing requested	N	N
Pointing RA	334.164451	334.1843936227652	Subarray requested	NONE	NONE
Pointing Dec	0.239046	0.2204594180351971	Alternating exposures requested	N	N
Pointing Roll	286.041887	286.1984507148791	Primary exposure time	0.000000	3.2
SIM focus pos (mm)	-0.684267	-0.6828225247311905			
SIM defocus (mm)	0	0.001444936568705701			
SIM translation stage pos (mm)	-190.132523	-190.1425803651734			
SIM translation stage offset (mm)	0	0.01005778216563158			
Observation start time	152498312.184000	152496491.06014			
Observation start date	2002-11-01T00:37:28	2002-11-01T00:08:11			
Observation end time	152506062.184000	152506743.62307			
Observation end date	2002-11-01T02:46:38	2002-11-01T02:59:03			
Read mode	TIMED	TIMED			

2.3 Aspect



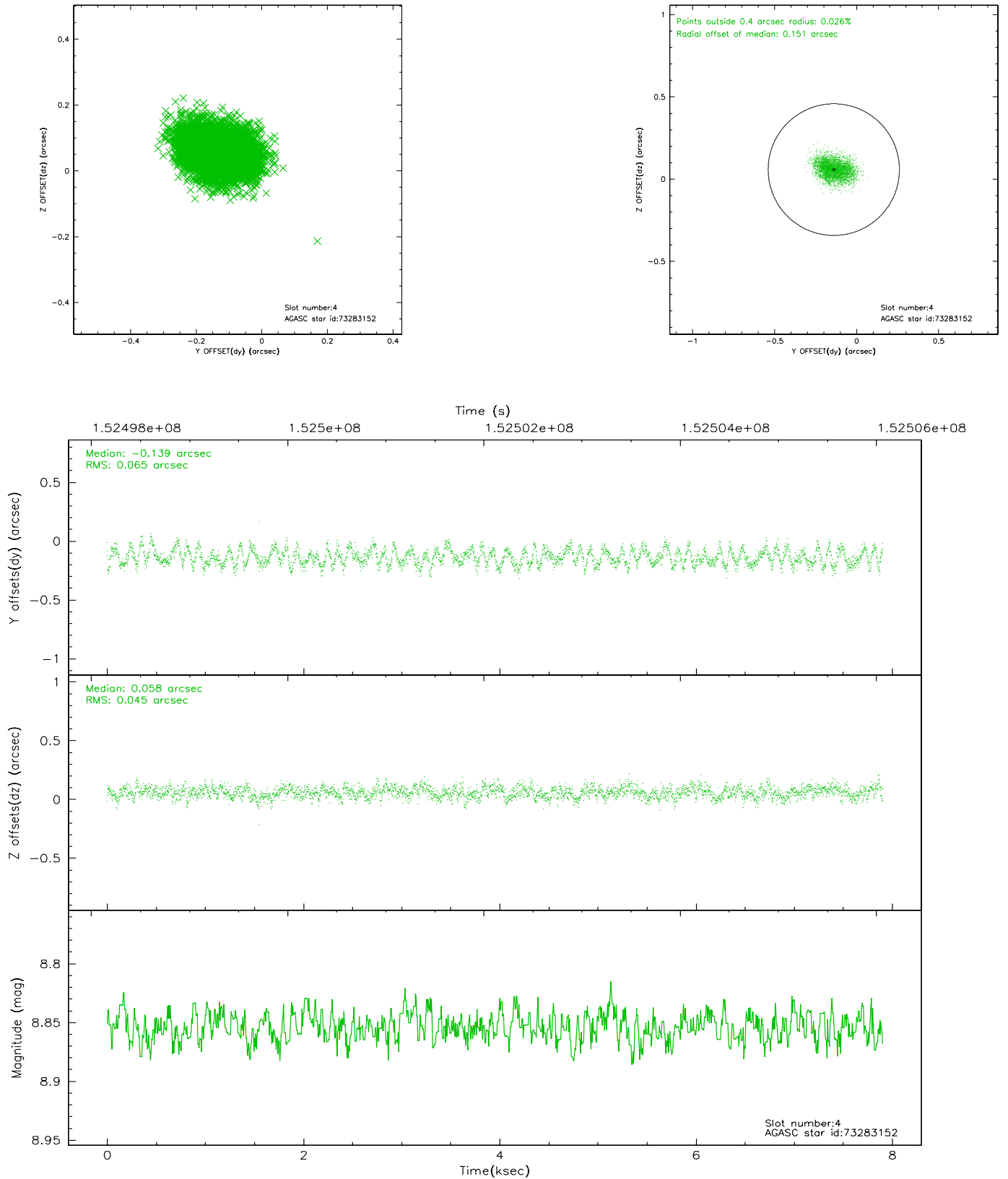


Slot Statistics

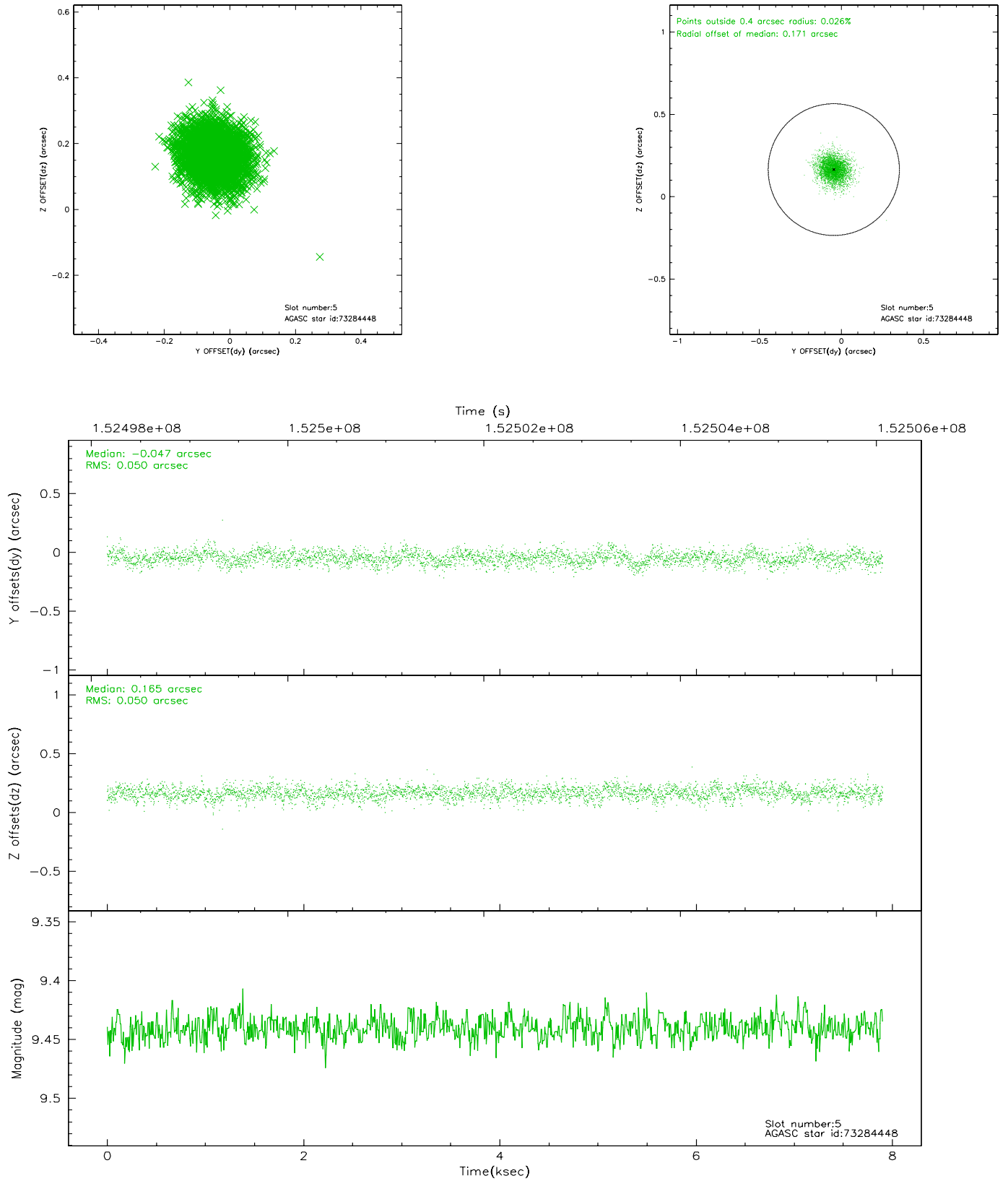
slot	status	id	mag	n_pts	med_dy	med_dz	dr1	dr2	ra	dec	mean_y	mean_z
0	FID	ACIS-S-2	7.11	1927	0.001	0.025	0.007	0.012	0.000000	0.000000	-755.23	-1728.88
1	FID	ACIS-S-4	7.21	1927	-0.070	-0.007	0.005	0.010	0.000000	0.000000	2157.67	178.81
2	FID	ACIS-S-5	7.24	1928	0.038	-0.009	0.006	0.010	0.000000	0.000000	-1807.10	173.32
3	OMITTED		0.00	0	0.000	0.000	0.000	0.000	0.000000	0.000000	0.00	0.00
4	GUIDE	73283152	8.85	3854	-0.139	0.058	0.085	0.132	334.629700	0.871456	-1725.53	2238.31
5	GUIDE	73284448	9.44	3854	-0.047	0.165	0.074	0.125	333.986577	0.512546	-1123.24	-342.93
6	GUIDE	684853448	9.36	3853	0.077	-0.138	0.087	0.143	333.686956	-0.382363	1675.71	-2270.19
7	GUIDE	73279648	9.44	3853	0.104	-0.085	0.081	0.134	333.975275	0.037033	511.82	-856.19

2.4 Star Slots

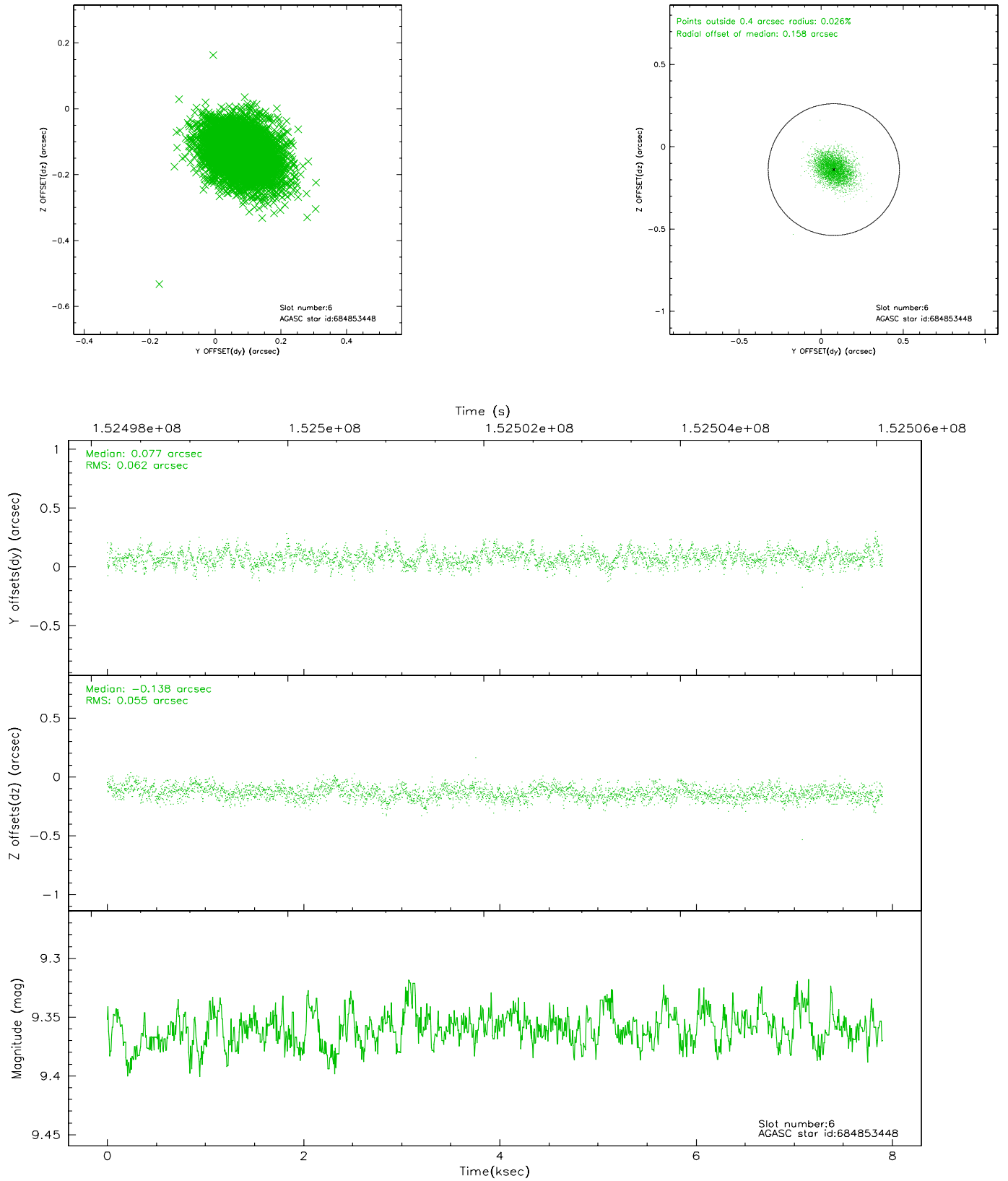
2.4.1 Slot 4



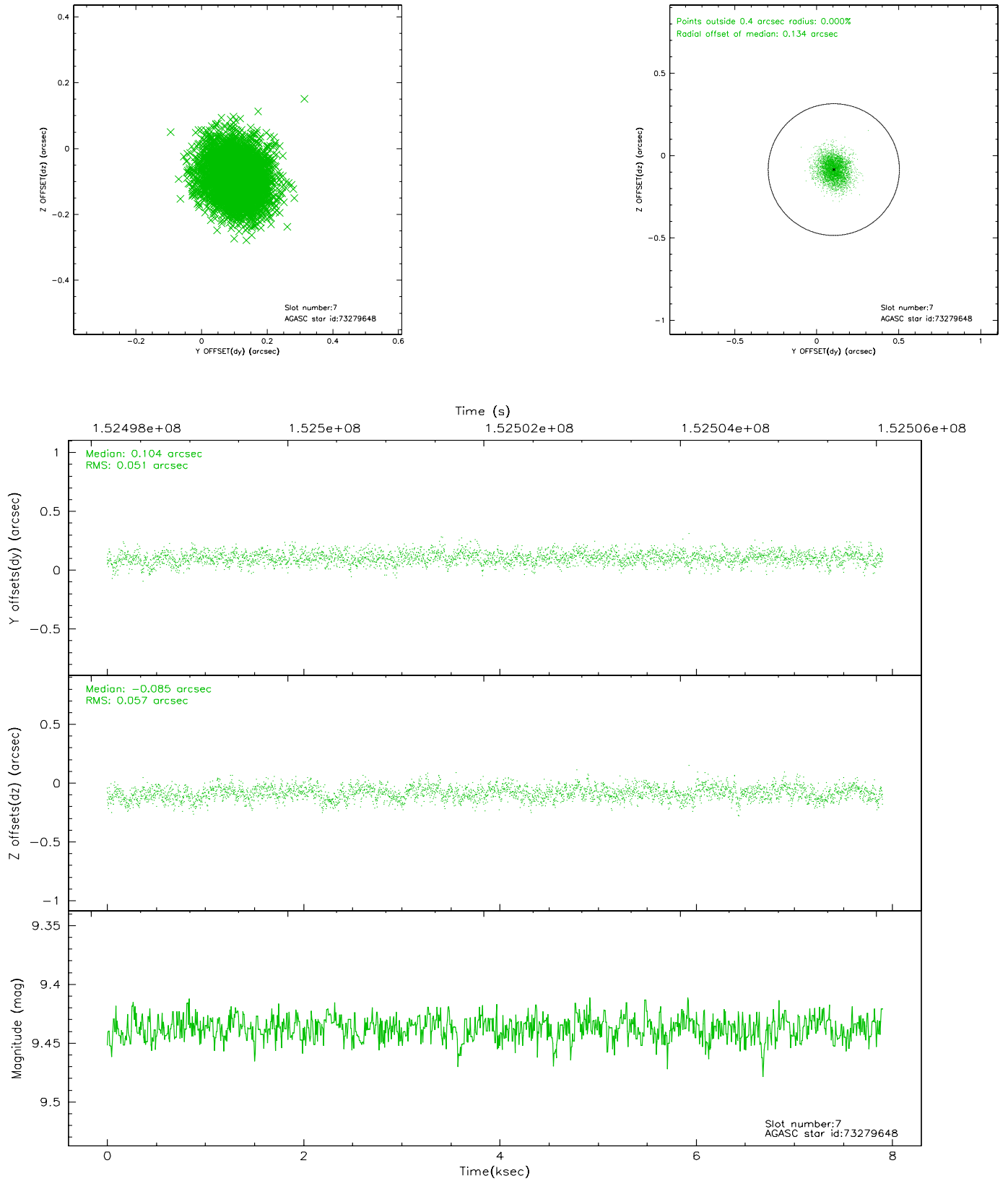
2.4.2 Slot 5



2.4.3 Slot 6

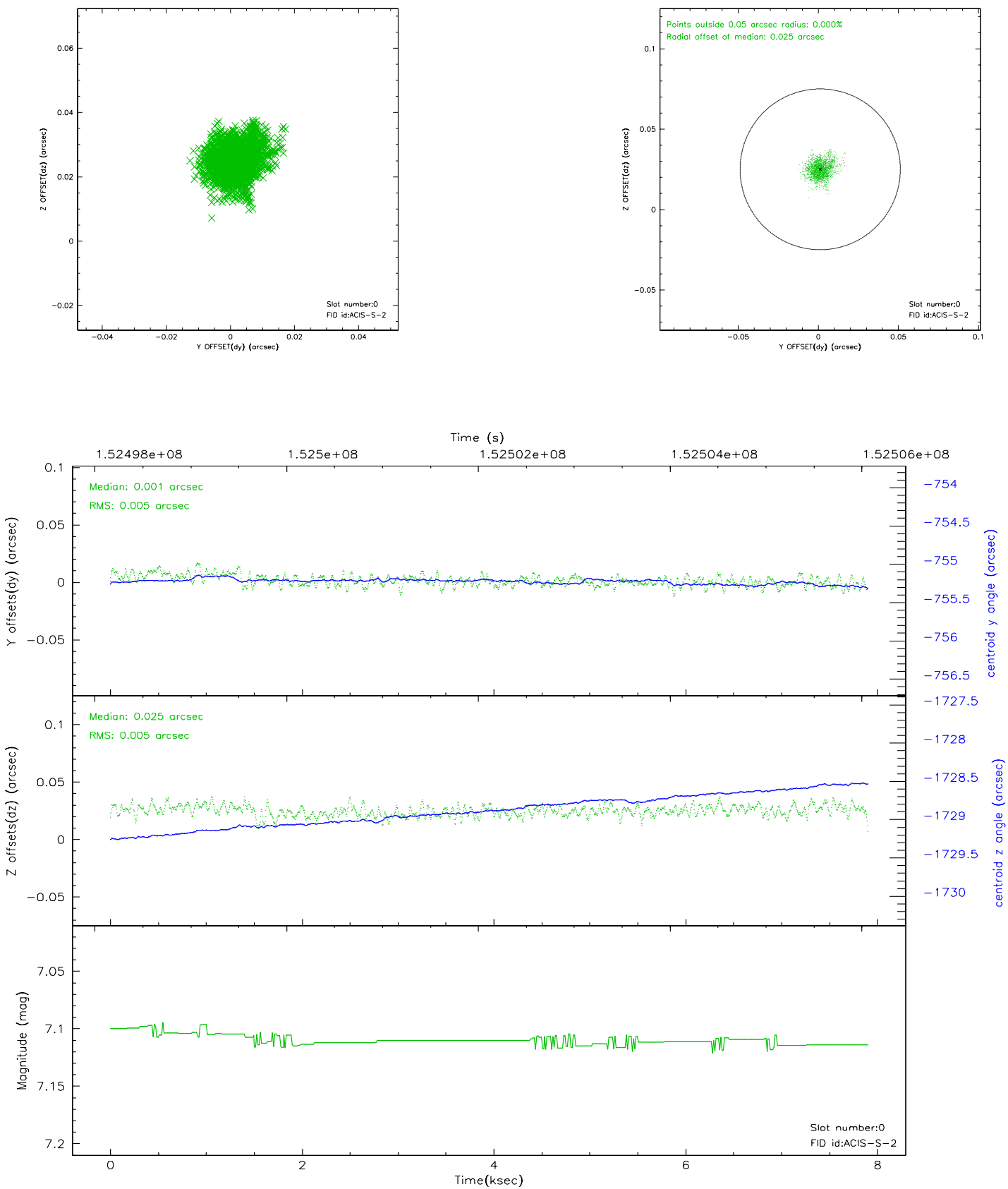


2.4.4 Slot 7

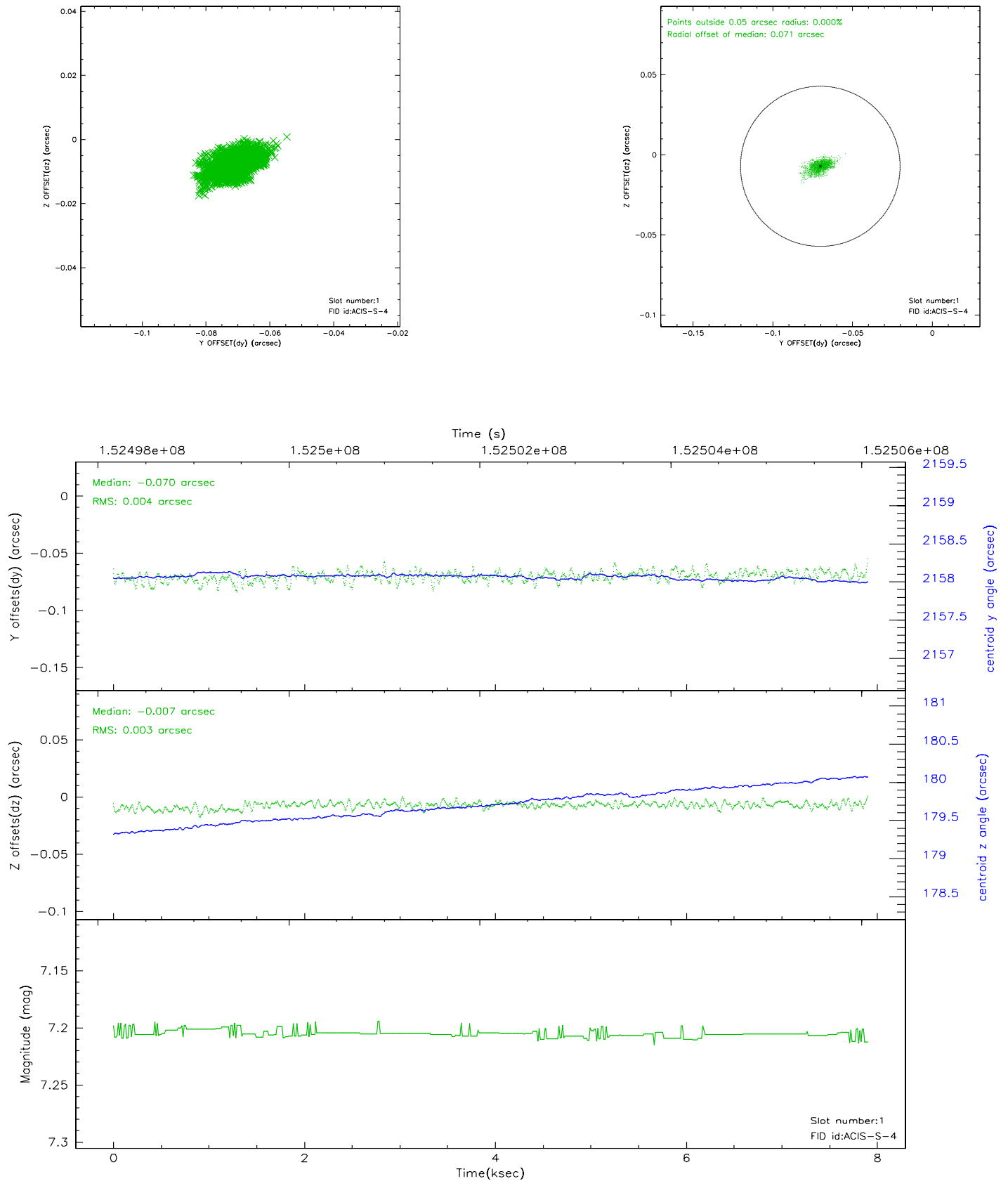


2.5 FID Slots

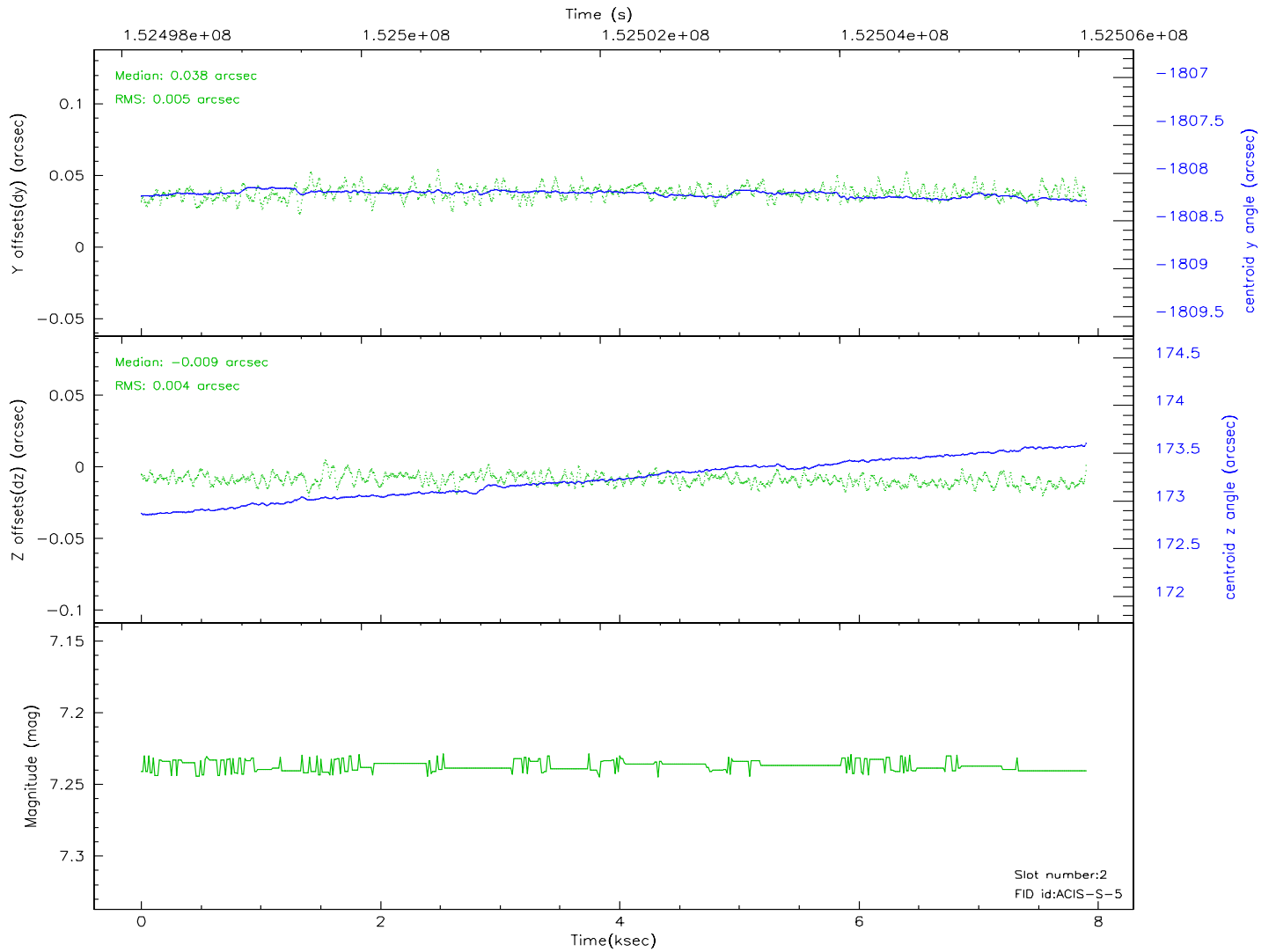
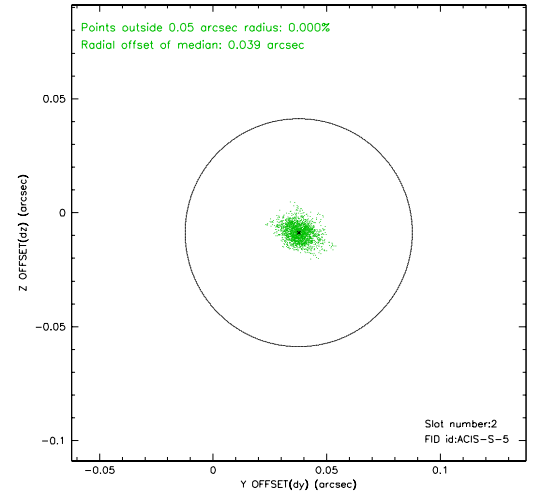
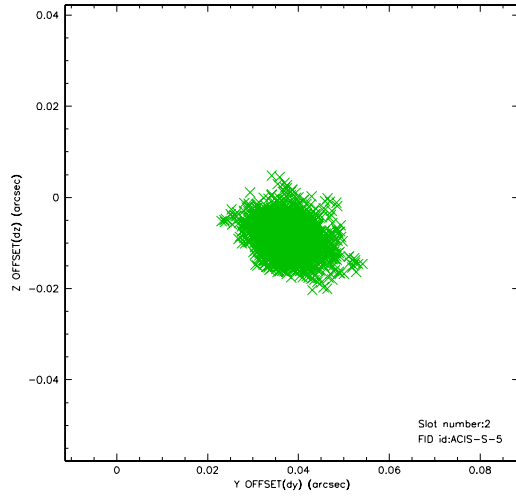
2.5.1 Slot 0



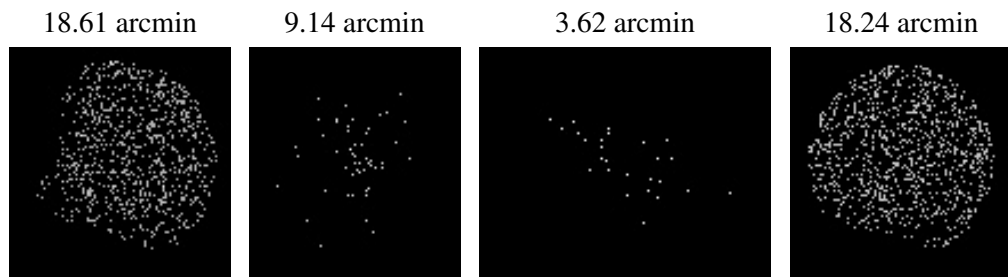
2.5.2 Slot 1



2.5.3 Slot 2



3 Point Sources



A Summary

A.1 Status

V&V Scientist	Jen Lauer
V&V Date (YYYY-MM-DD)	2010.10.01
V&V Edition	2
V&V Disposition and Status	OK
V&V Charge Time	7.507

A.2 Comments

The guide star in slot 3 was manually excluded from the processing due to poor data quality.