

V&V Reference Report

L2 ASCDS Version : 7.6.8.1

Observation 3020 - L2 Version 001
Chandra X-Ray Center

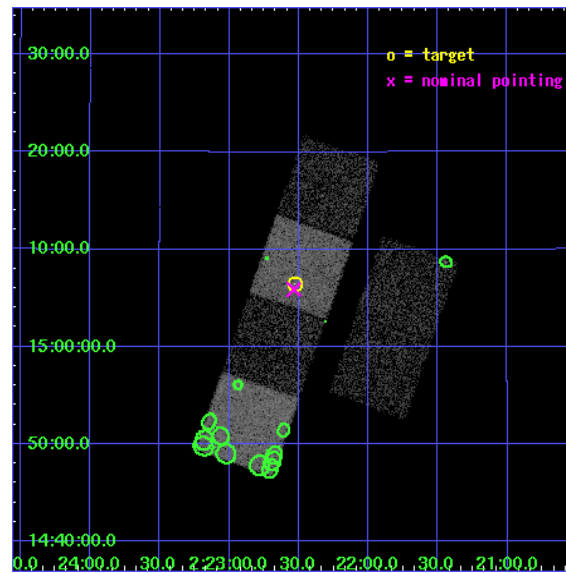
L2 Processing Date : Aug 31 2006

Contents

1	Front	2
2	OBI	3
2.1	OBI	3
2.1.1	Images	3
2.1.2	Bias	3
2.1.3	Parameters	4
2.1.4	Events	4
2.2	Compared Parameters	5
2.3	Aspect	6
2.4	Star Slots	9
2.4.1	Slot 3	9
2.4.2	Slot 4	10
2.4.3	Slot 5	11
2.4.4	Slot 6	12
2.4.5	Slot 7	13
2.5	FID Slots	14
2.5.1	Slot 0	14
2.5.2	Slot 1	15
2.5.3	Slot 2	16
3	Point Sources	17
A	Summary	18
A.1	Status	18
A.2	Comments	18

1 Front

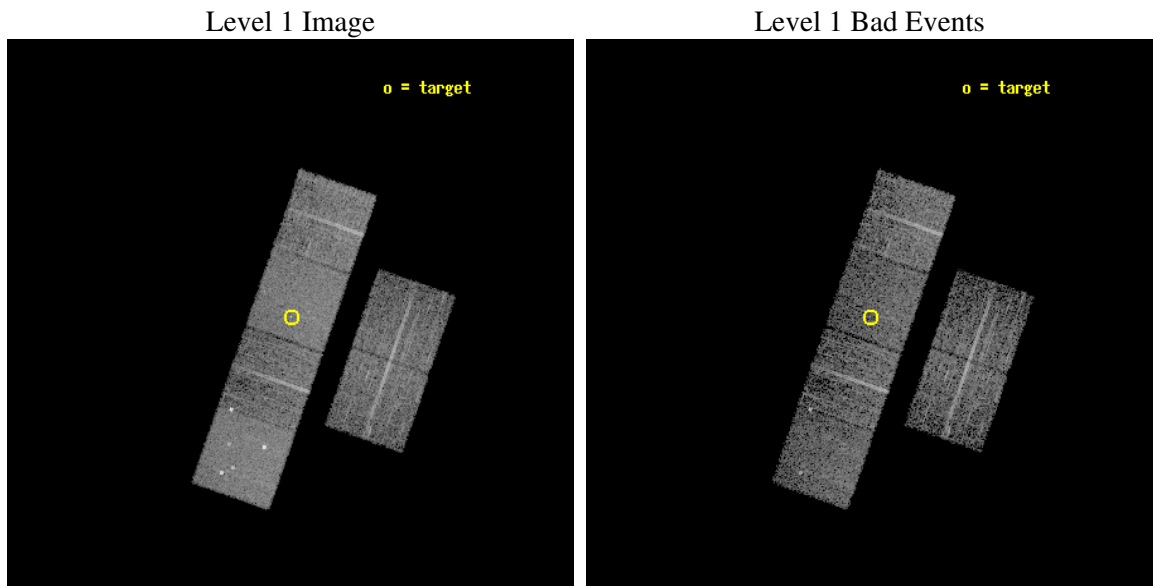
seq_num	700459
obs_id	3020
title	A SYSTEMATIC X-RAY SURVEY OF SUBMILLIMETRE-LUMINOUS QUASARS
observer	Dr Robert Priddey
object	HS0219+1452
dtcycle	0
cycle	P
ra_targ	35.632125
dec_targ	15.107944
ra_nom	35.633760570454
dec_nom	15.098287499603
roll_nom	289.22043720607
revision	2
ontime	4755.2000044286
livetime	4694.9867987349
ontime2	4754.6848608255
ontime3	4755.2000044286
ontime5	4755.2000044286
ontime6	4755.2000044286
ontime7	4755.2000044286
ontime8	4751.9590341747
l2events	48497



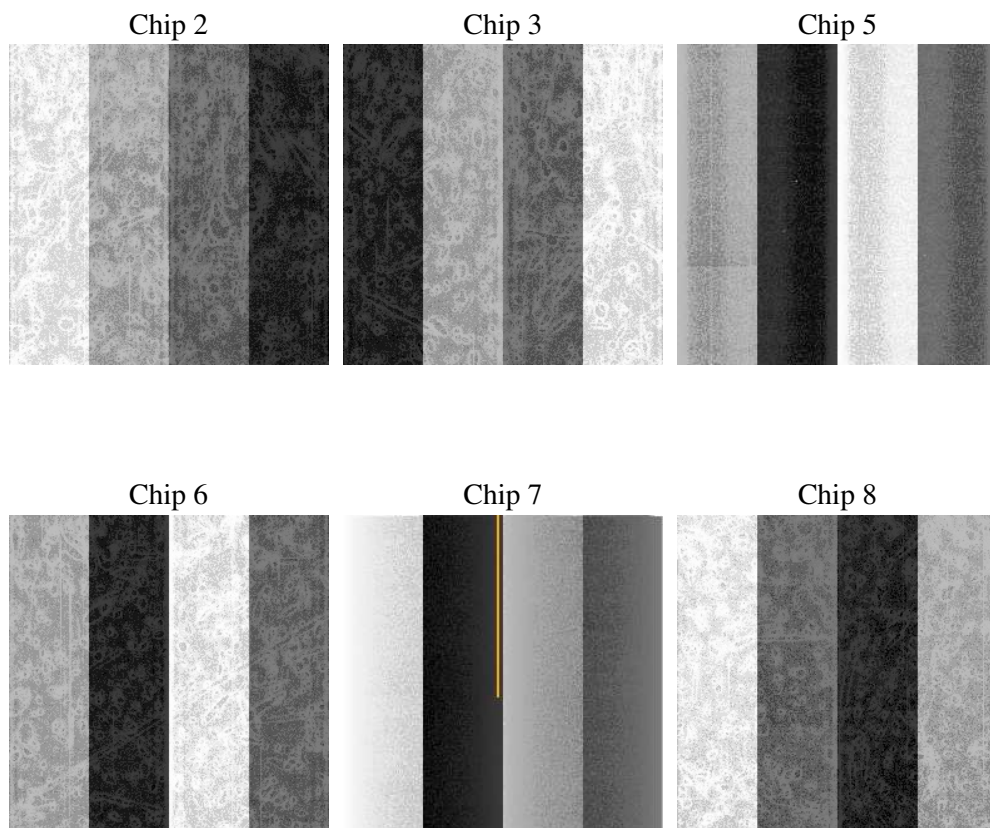
2 OBI

2.1 OBI

2.1.1 Images



2.1.2 Bias



2.1.3 Parameters

obi_num	0
ascdsver	7.6.8.1
caldsver	3.2.3
date	2006-08-31T11:42:36
revision	2

sched_exp_time	5000.000000
ontime	4761.0273718685
ontime2	4757.7863617837
ontime3	4761.0273519456
ontime5	4761.0273718685
ontime6	4761.0273519456
ontime7	4761.0273718685
ontime8	4757.7862820178
l1events	225890

2.1.4 Events

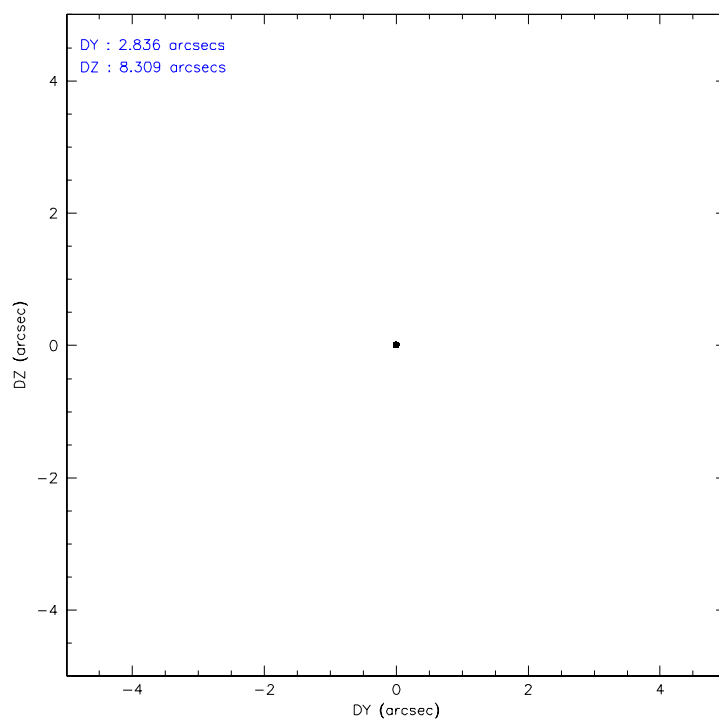
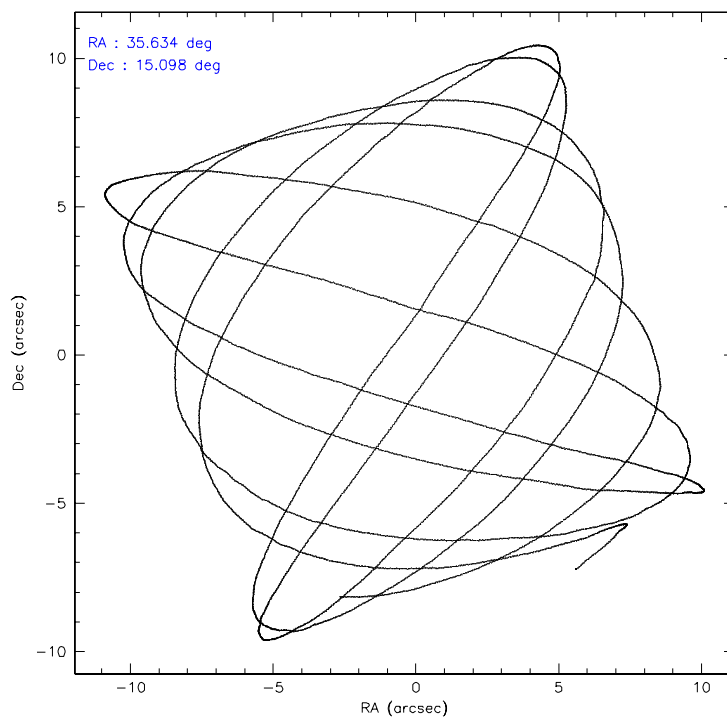
	ccd 2	ccd 3	ccd 5	ccd 6	ccd 7	ccd 8
level 1 events	31773	29536	47560	32097	42037	42887
rejected events	28272	26041	24810	28347	25118	34919
rejected %	88%	88%	52%	88%	59%	81%

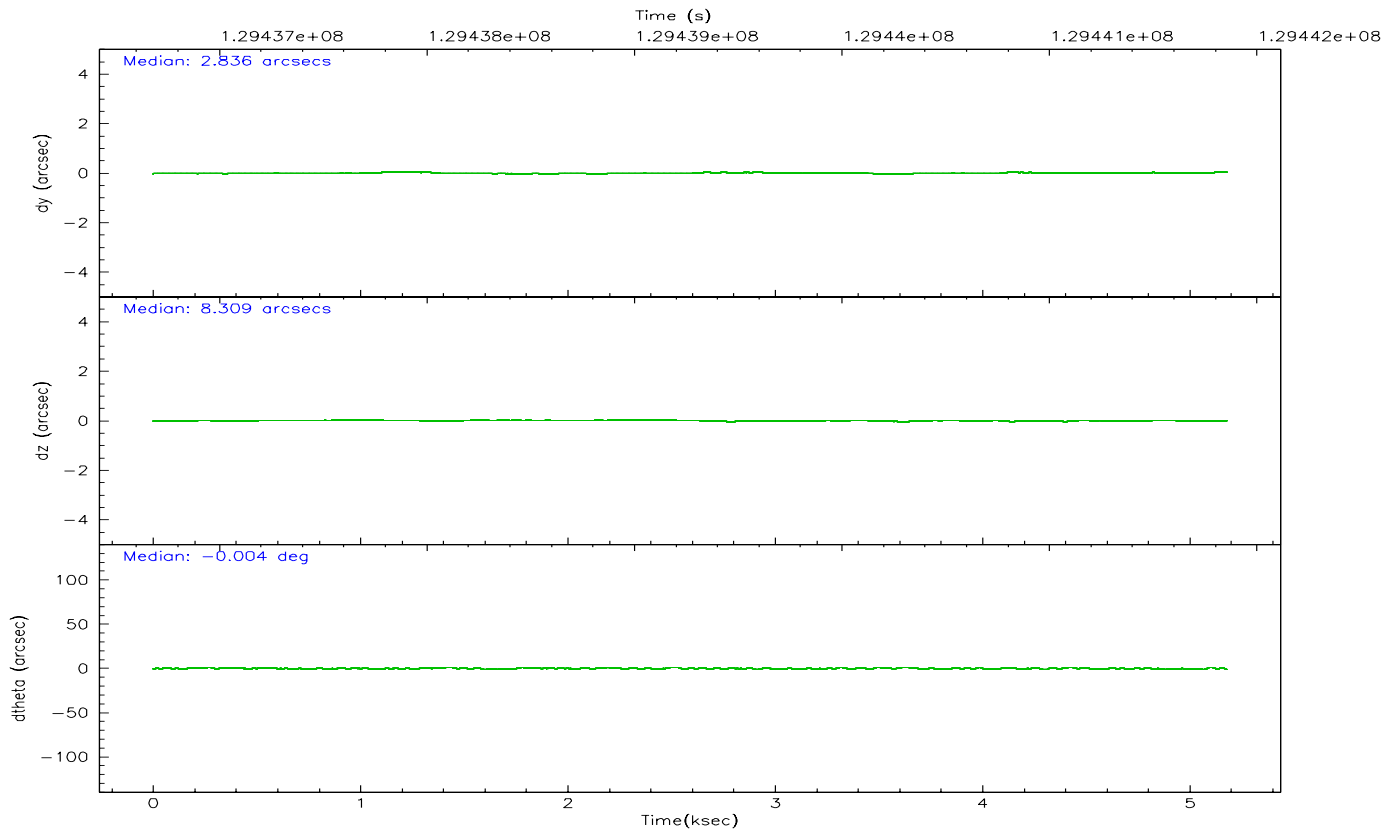
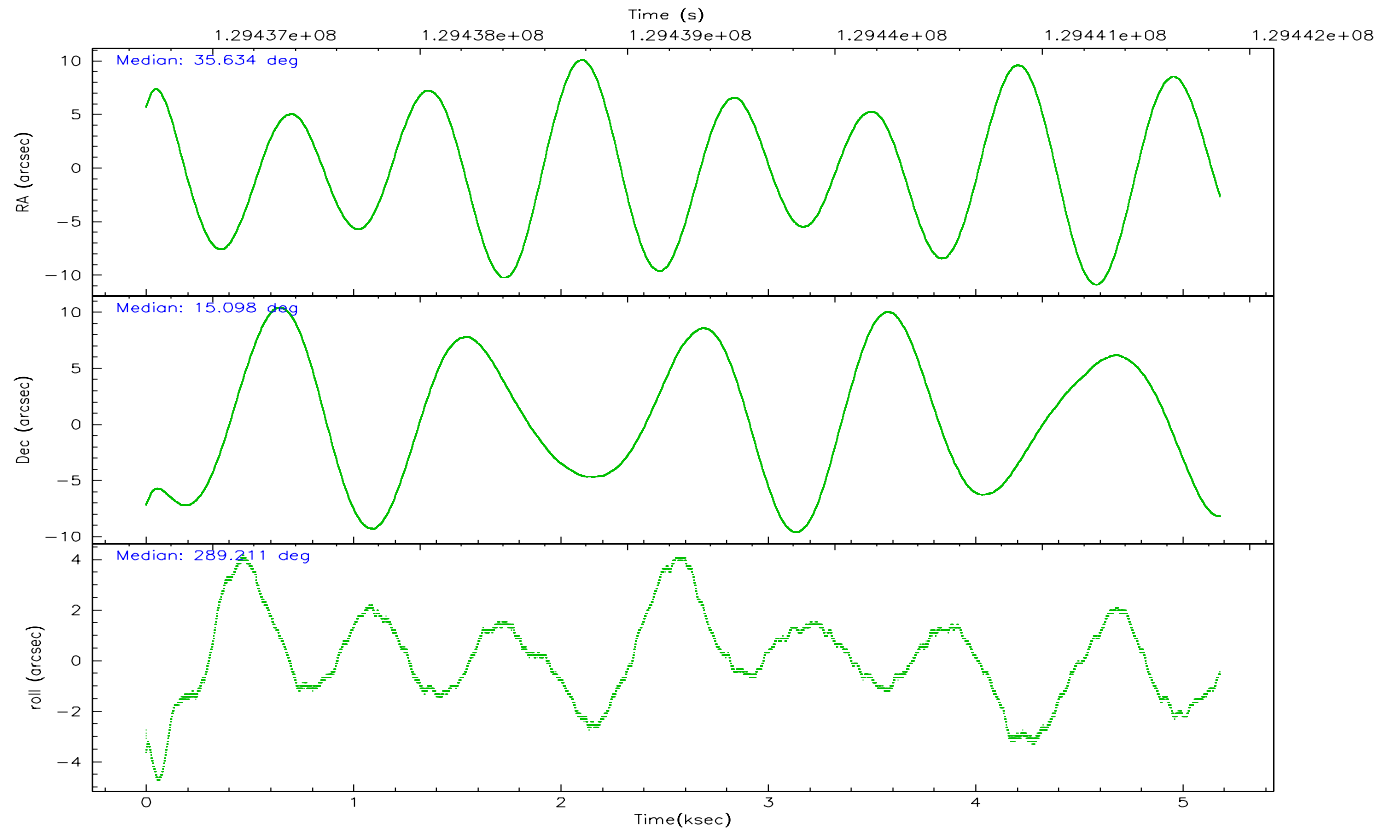
	ccd 2	ccd 3	ccd 5	ccd 6	ccd 7	ccd 8
grade 0 events	1447	1505	3452	1513	1173	2425
	4%	5%	7%	4%	2%	5%
grade 1 events	16	12	285	11	39	22
	0%	0%	0%	0%	0%	0%
grade 2 events	791	715	6413	763	4105	1731
	2%	2%	13%	2%	9%	4%
grade 3 events	317	337	522	388	915	843
	0%	1%	1%	1%	2%	1%
grade 4 events	345	375	477	353	938	788
	1%	1%	1%	1%	2%	1%
grade 5 events	1128	1213	2269	1377	2742	1613
	3%	4%	4%	4%	6%	3%
grade 6 events	602	567	11914	737	9817	2192
	1%	1%	25%	2%	23%	5%
grade 7 events	27127	24812	22228	26955	22308	33273
	85%	84%	46%	83%	53%	77%

2.2 Compared Parameters

Parameter	Planned	Actual	Parameter	Planned	Actual
Instrument	ACIS	ACIS	Obspar format version number	6	6
Detector	ACIS-235678	ACIS-235678	Obspar file type	PREDICTED	ACTUAL
Grating	NONE	NONE	Obspar update status	NONE	UPDATED
Data mode	FAINT	FAINT	On-chip summing requested	N	N
Observation mode	POINTING	POINTING	Subarray requested	NONE	NONE
Pointing RA	35.612109	35.63376057045433	Alternating exposures requested	N	N
Pointing Dec	15.115901	15.09828749960264	Primary exposure time	0.000000	3.2
Pointing Roll	289.069453	289.2204372060683			
SIM focus pos (mm)	-0.684267	-0.6828225247311905			
SIM defocus (mm)	0	0.001444936568705701			
SIM translation stage pos (mm)	-190.132523	-190.1425803651734			
SIM translation stage offset (mm)	0	0.01005778216563158			
Observation start time	129436861.184000	129436124.67838			
Observation start date	2002-02-07T02:39:57	2002-02-07T02:28:44			
Observation end time	129441861.184000	129442295.17863			
Observation end date	2002-02-07T04:03:17	2002-02-07T04:11:35			
Read mode	TIMED	TIMED			

2.3 Aspect



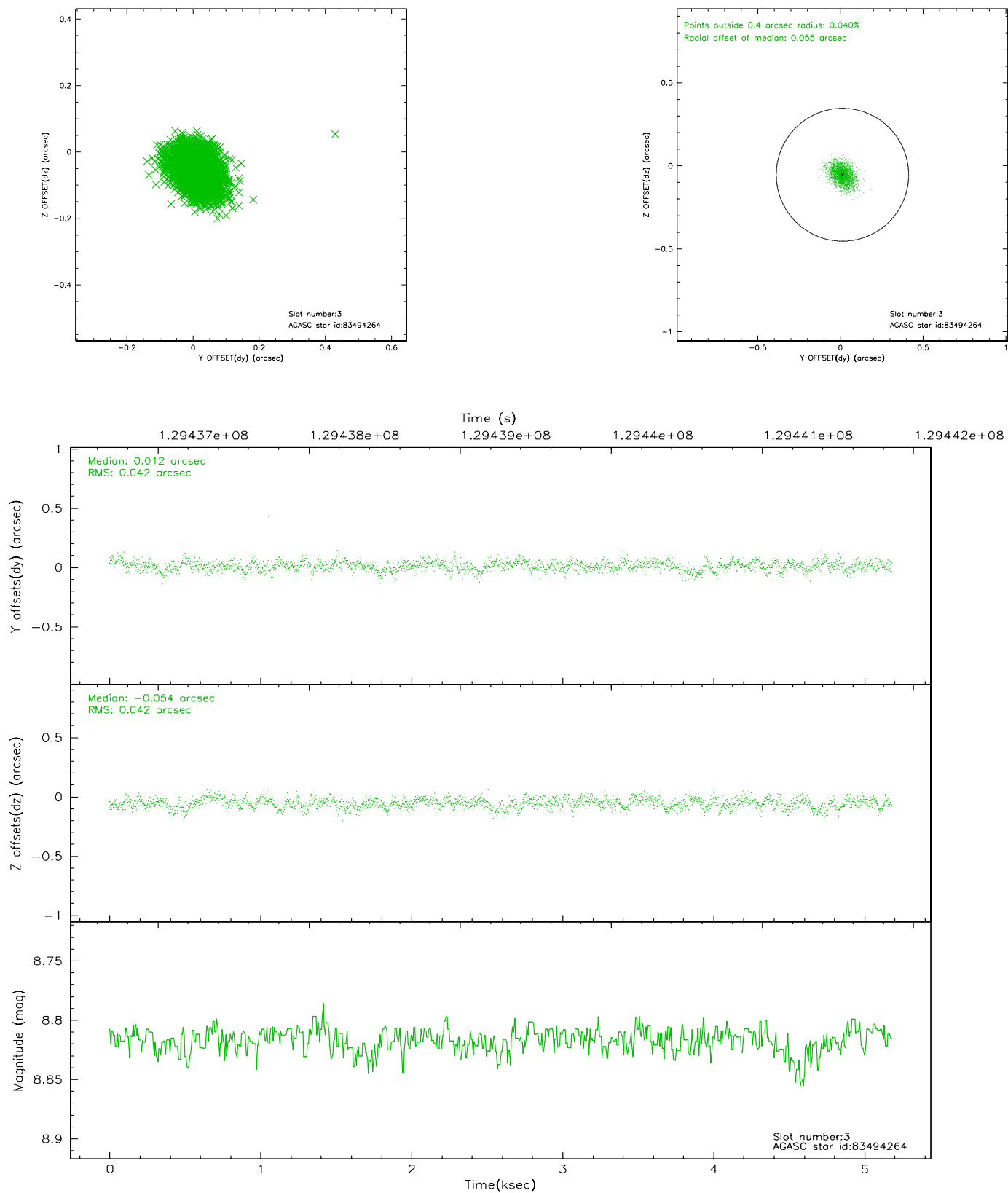


Slot Statistics

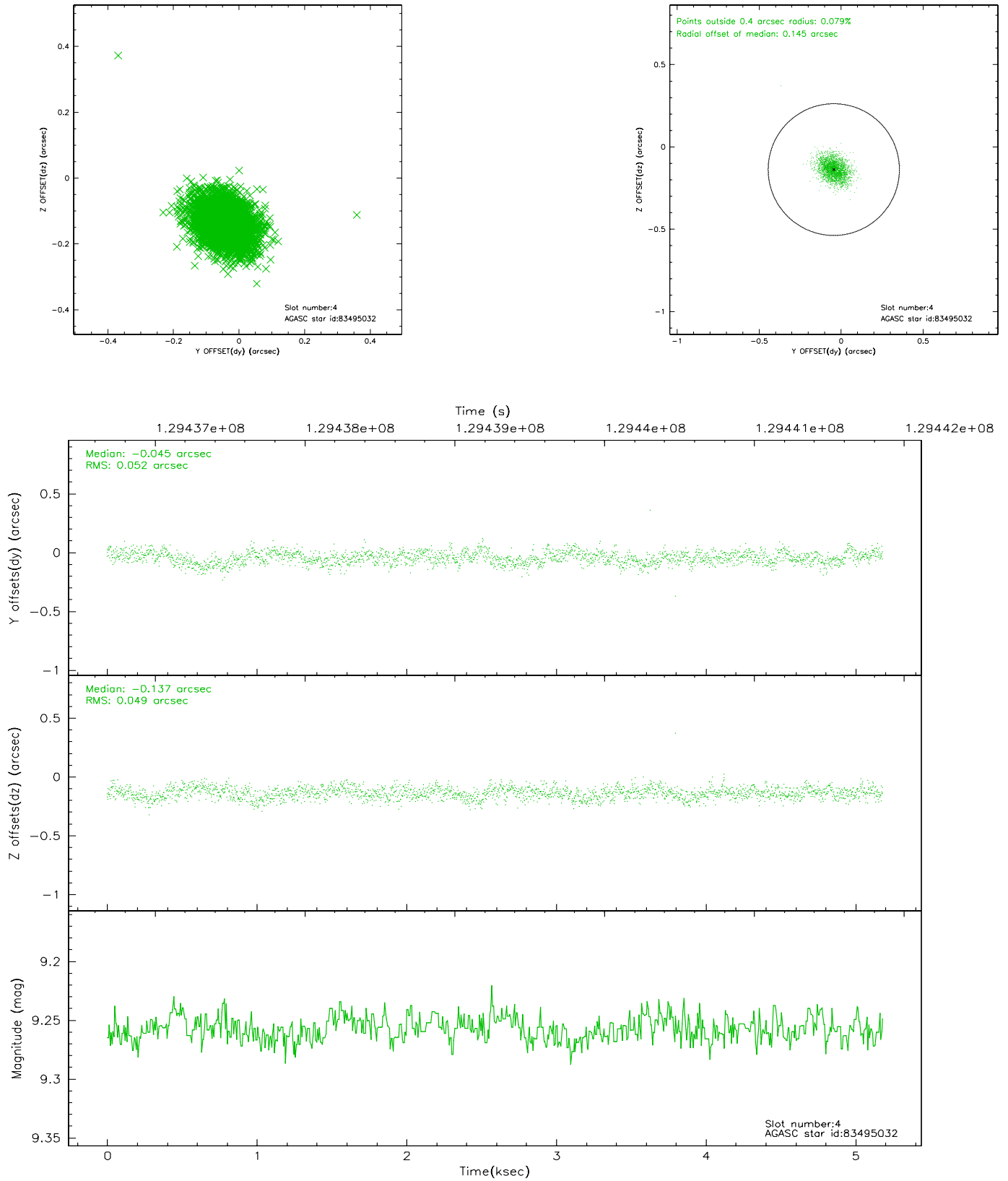
slot	status	id	mag	n_pts	med_dy	med_dz	dr1	dr2	ra	dec	mean_y	mean_z
0	FID	ACIS-S-2	7.11	1264	0.008	0.020	0.007	0.010	0.000000	0.000000	-755.48	-1729.44
1	FID	ACIS-S-4	7.19	1264	-0.088	-0.009	0.005	0.009	0.000000	0.000000	2157.19	177.79
2	FID	ACIS-S-5	7.24	1264	0.049	-0.002	0.006	0.009	0.000000	0.000000	-1806.76	172.82
3	GUIDE	83494264	8.82	2528	0.012	-0.054	0.064	0.104	35.685938	14.827820	1064.18	-96.65
4	GUIDE	83495032	9.26	2528	-0.045	-0.137	0.074	0.121	35.424725	14.735004	1083.20	-1065.30
5	GUIDE	159260976	10.01	2527	0.041	0.088	0.136	0.227	36.268891	15.062897	923.38	2095.65
6	GUIDE	159261912	8.17	2529	-0.145	0.024	0.071	0.110	36.113413	15.524876	-825.34	2125.04
7	GUIDE	83630320	9.73	2527	0.132	0.080	0.120	0.196	36.209406	14.669275	2196.30	1442.19

2.4 Star Slots

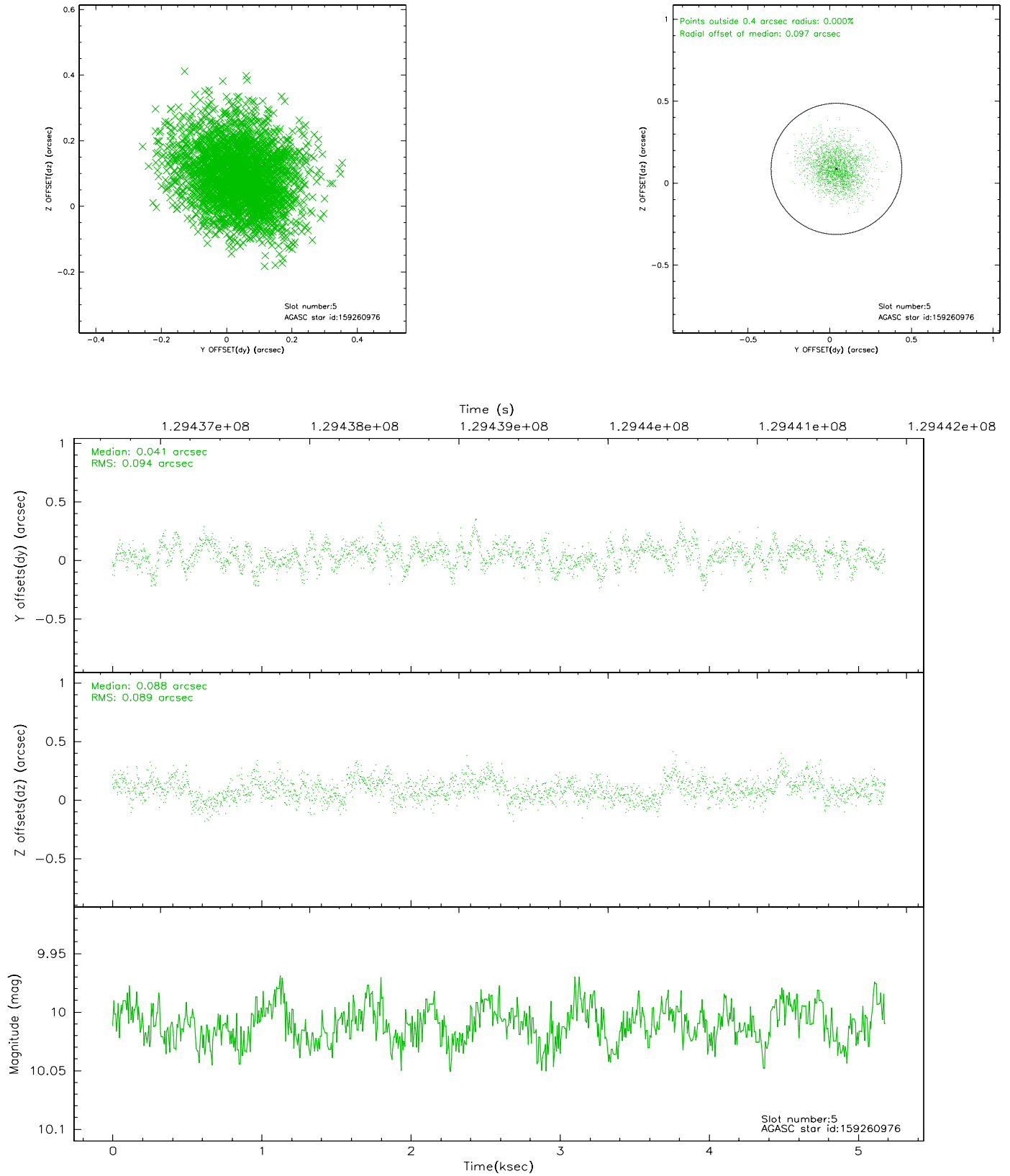
2.4.1 Slot 3



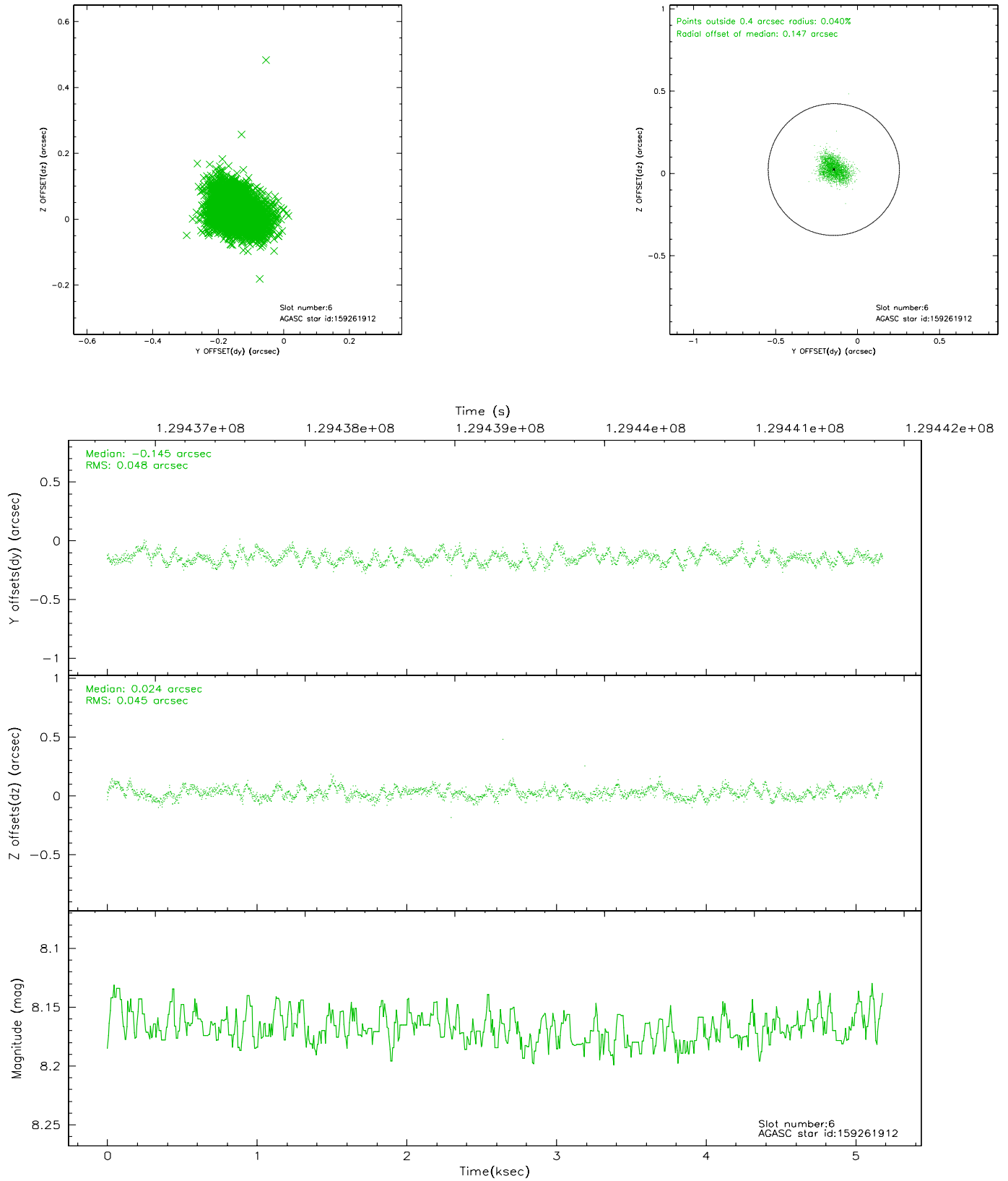
2.4.2 Slot 4



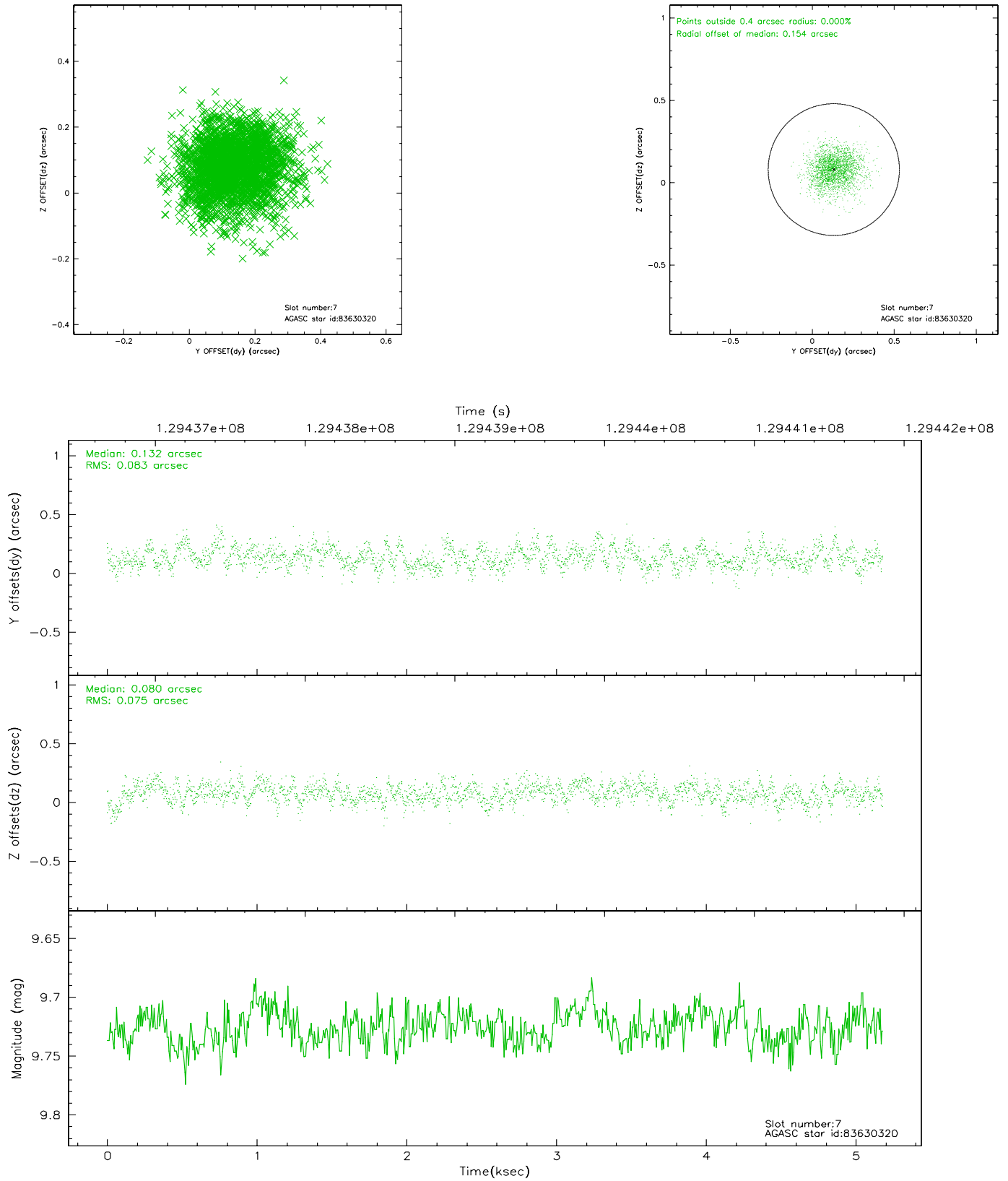
2.4.3 Slot 5



2.4.4 Slot 6

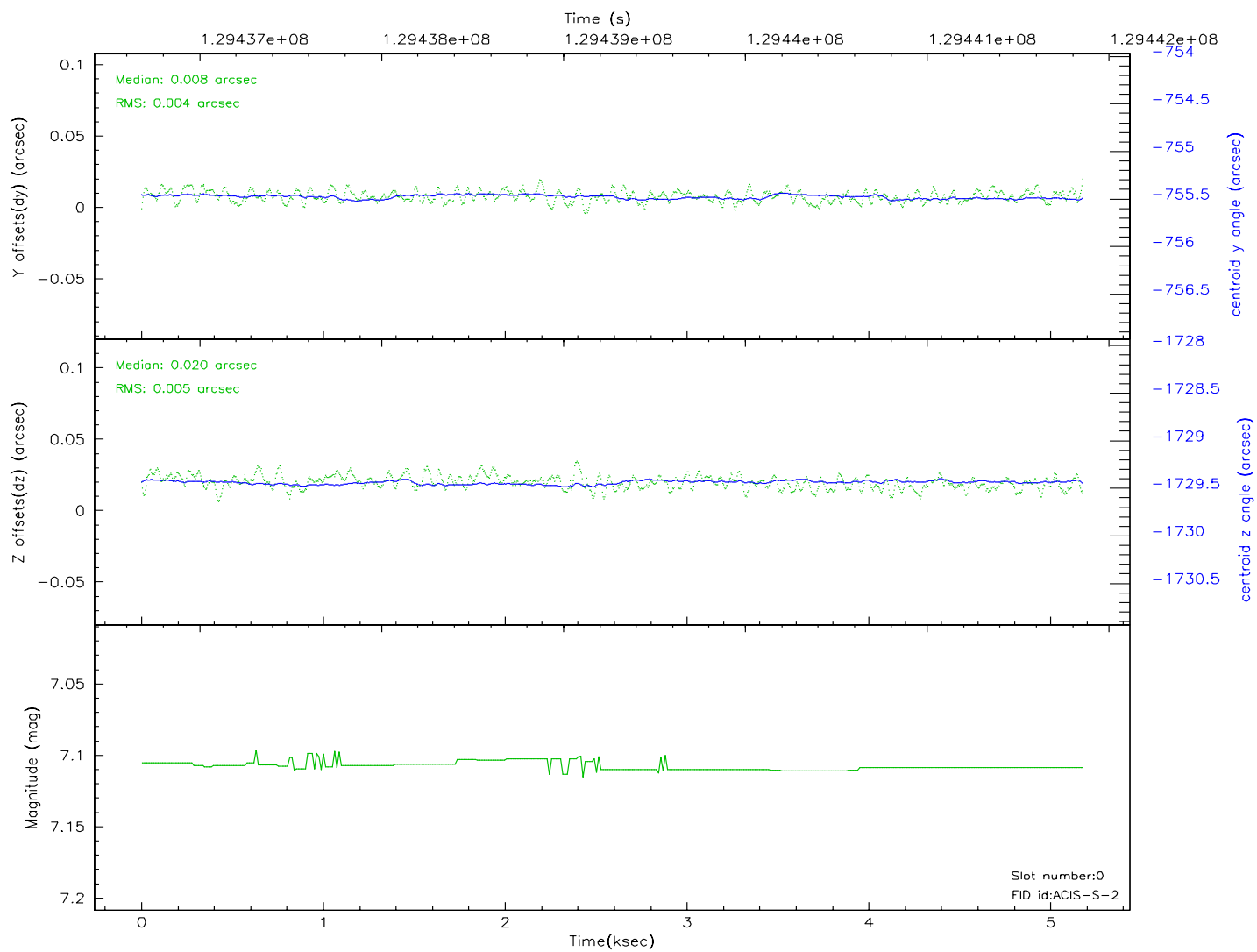
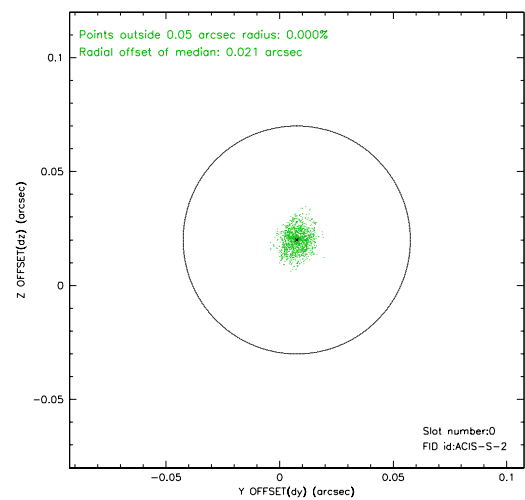
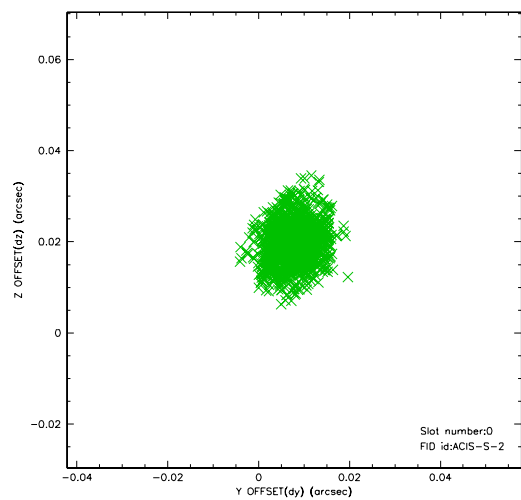


2.4.5 Slot 7

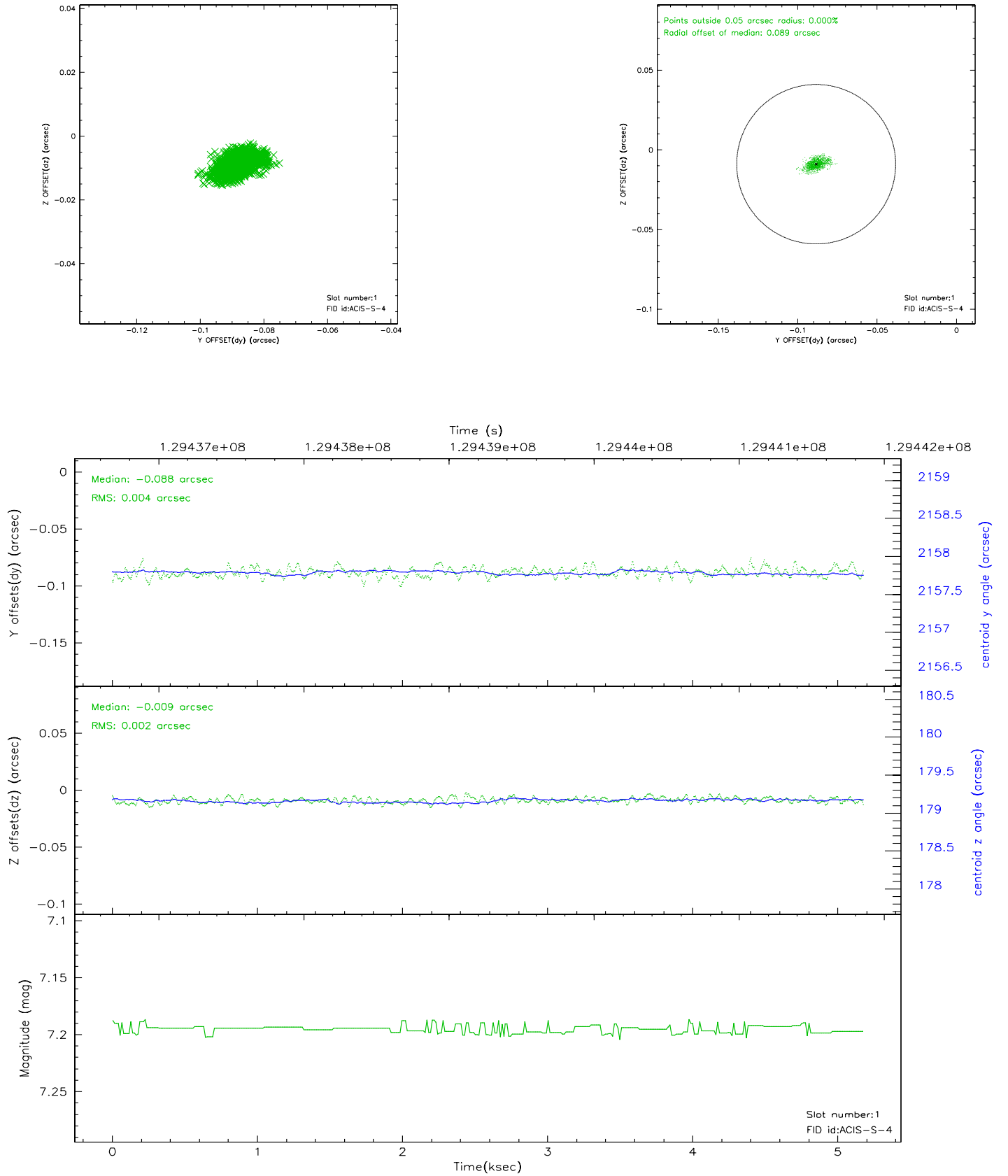


2.5 FID Slots

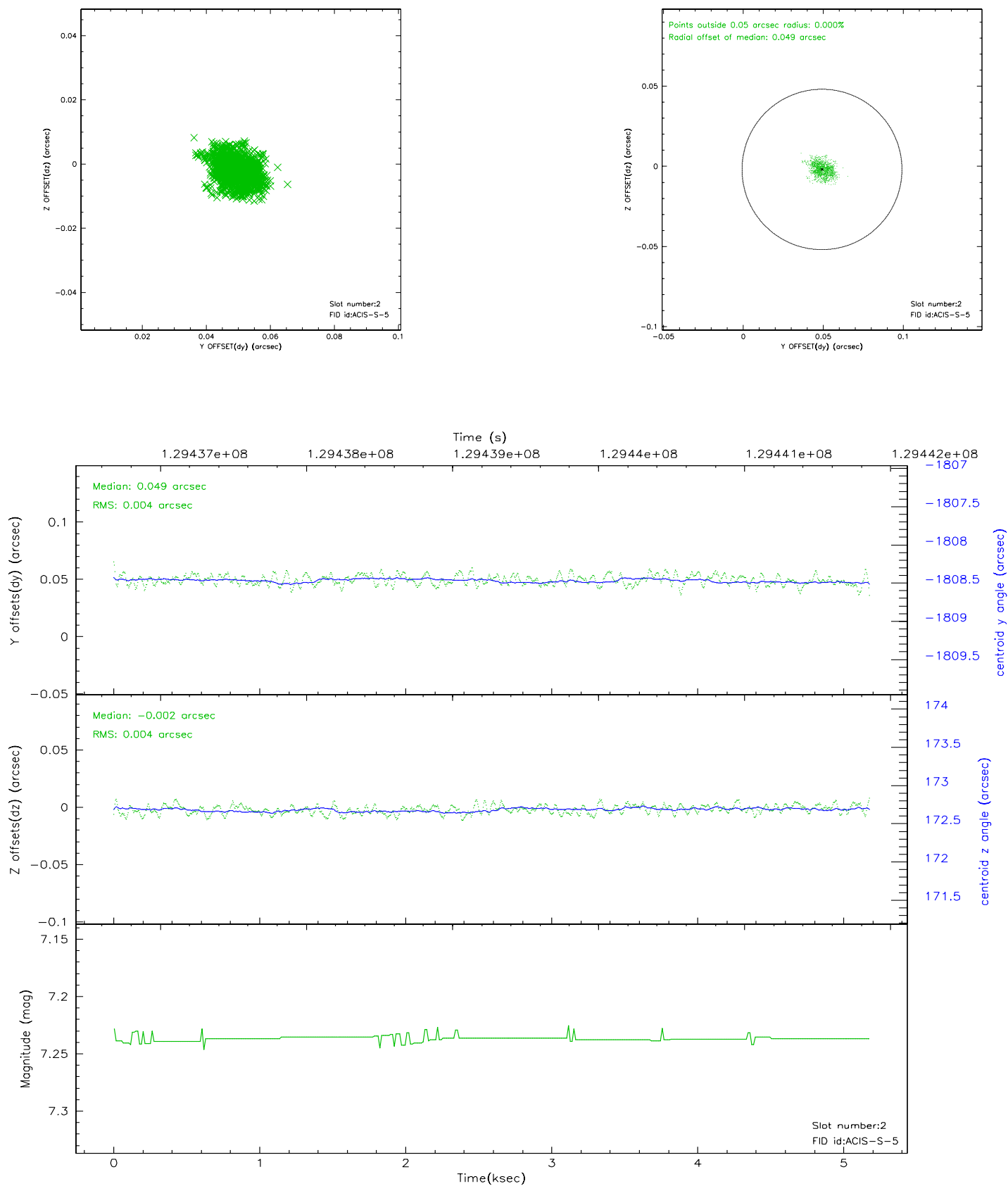
2.5.1 Slot 0



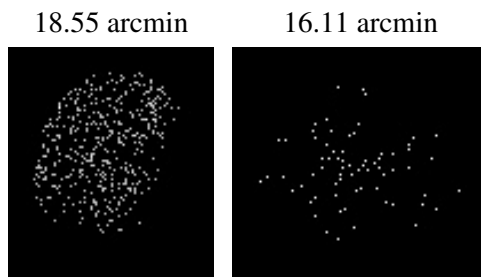
2.5.2 Slot 1



2.5.3 Slot 2



3 Point Sources



A Summary

A.1 Status

V&V Scientist	Beth Sundheim
V&V Date (YYYY-MM-DD)	2006.08.31
V&V Edition	1
V&V Disposition and Status	OK
V&V Charge Time	4.758

A.2 Comments