

# V&V Reference Report

## L2 ASCDS Version : 8.4.5

Observation 2981 - L2 Version 3  
Chandra X-Ray Center

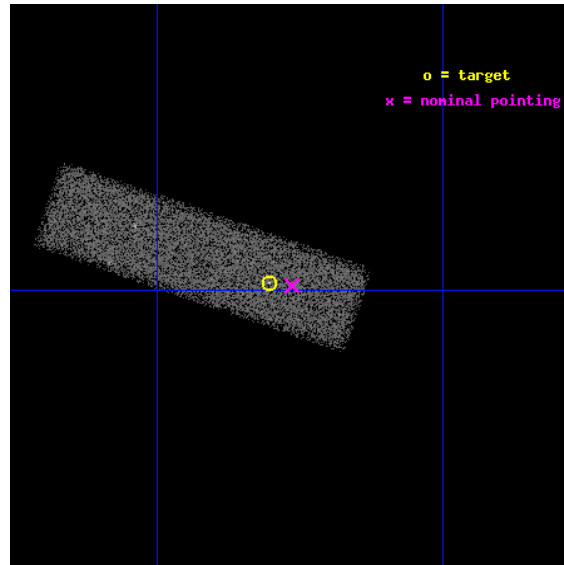
L2 Processing Date : Oct 13 2012

## Contents

<b>1</b>	<b>Front</b>	<b>2</b>
<b>2</b>	<b>OBI</b>	<b>3</b>
2.1	OBI . . . . .	3
2.1.1	Images . . . . .	3
2.1.2	Bias . . . . .	3
2.1.3	Parameters . . . . .	4
2.1.4	Events . . . . .	4
2.2	Compared Parameters . . . . .	5
2.3	Aspect . . . . .	6
2.4	Star Slots . . . . .	9
2.4.1	Slot 3 . . . . .	9
2.4.2	Slot 4 . . . . .	10
2.4.3	Slot 5 . . . . .	11
2.4.4	Slot 6 . . . . .	12
2.4.5	Slot 7 . . . . .	13
2.5	FID Slots . . . . .	14
2.5.1	Slot 0 . . . . .	14
2.5.2	Slot 1 . . . . .	15
2.5.3	Slot 2 . . . . .	16
<b>A</b>	<b>Summary</b>	<b>17</b>
A.1	Status . . . . .	17
A.2	Comments . . . . .	17

# 1 Front

seq_num	700420	Sequence number
obs_id	2981	Observation id
title	STUDY OF THE Z=3.572 QUASAR PKS 2215+020	Proposal title
observer	DR. LEON VANSPEYBROECK	Principal investigator
object	PKS 2215+020	Source name
dtcycle	0	&#160
cycle	P	events from which exps? Prim/Second/Both
ra_targ	334.450833	Observer's specified target RA [deg]
dec_targ	2.336389	Observer's specified target Dec [deg]
ra_nom	334.44124959736	Nominal RA [deg]
dec_nom	2.3349227687477	Nominal Dec [deg]
roll_nom	198.85288034722	Nominal Roll [deg]
revision	3	Processing version of data
ontime	29041.600432754	Sum of GTIs [s]
liveltime	27624.465359796	Livetime [s]
ontime7	29041.600432754	Sum of GTIs [s]
l2events	25343	Number of level 2 events

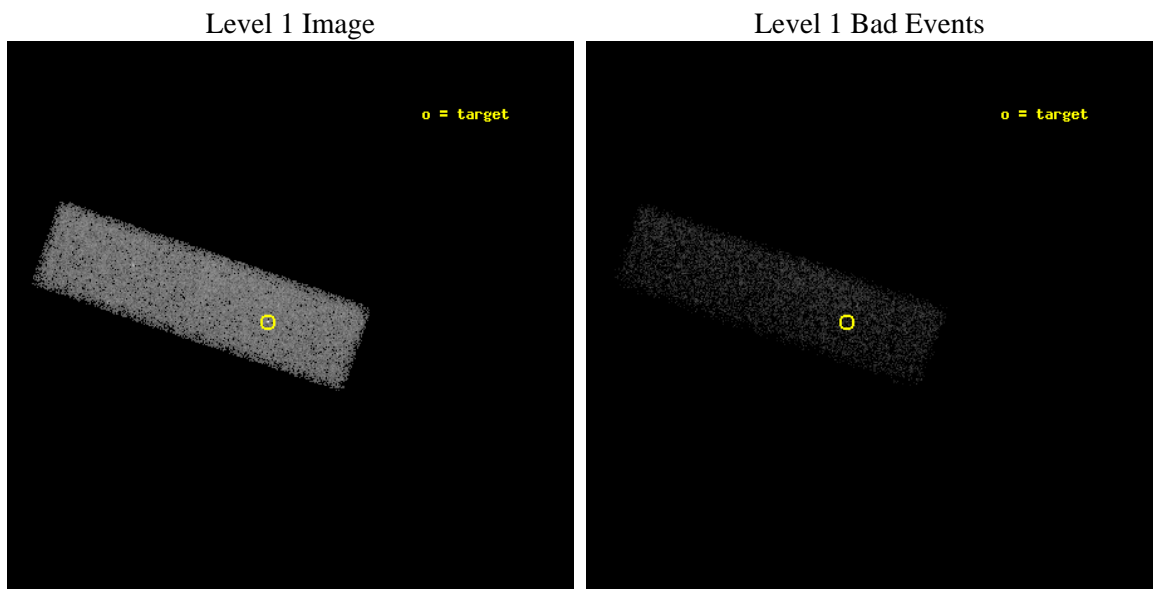




## 2 OBI

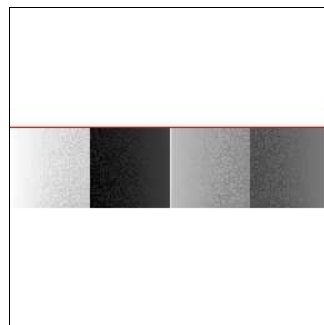
### 2.1 OBI

#### 2.1.1 Images



#### 2.1.2 Bias

Chip 7



### 2.1.3 Parameters

obi_num	1	Obi number	sched_exp_time	28800.000000	[s] Scheduled observation exposure time
ascdsver	8.4.5	Processing system revision	ontime	29041.600432754	Sum of GTIs [s]
caldsver	4.5.2	&#160	ontime7	29041.600432754	Sum of GTIs [s]
date	2012-10-13T05:57:47	Date and time of file creation	l1events	58955	Number of level 1 events
revision	3	Processing version of data			

### 2.1.4 Events

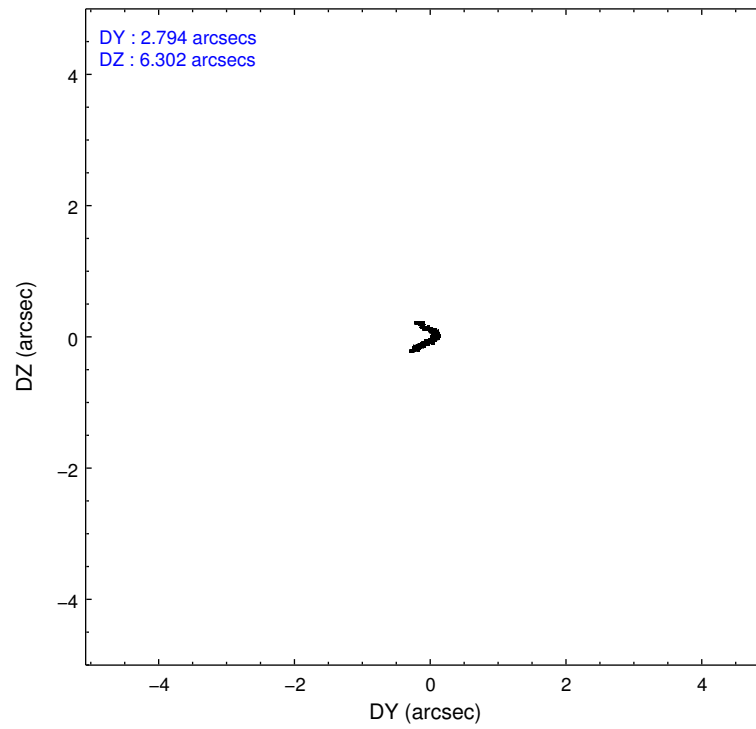
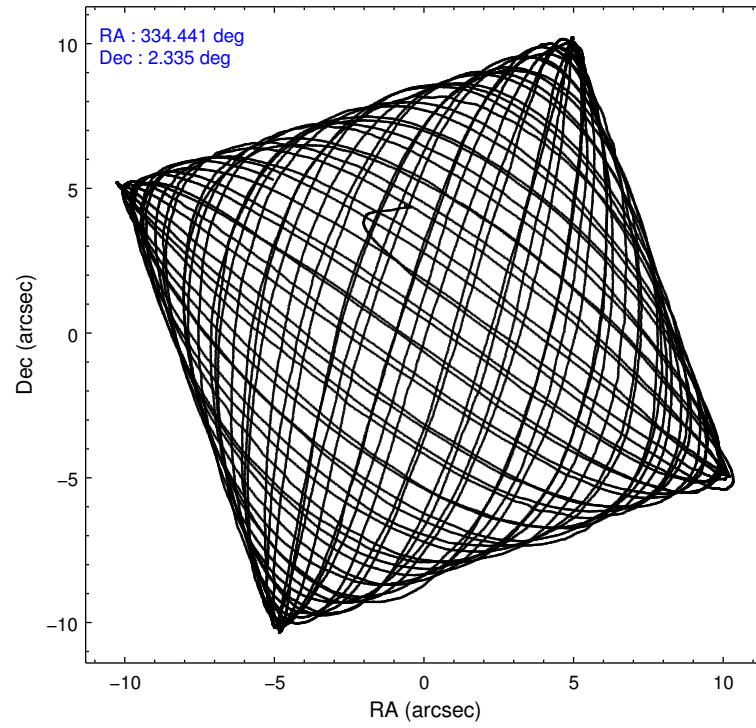
	<b>ccd 7</b>
level 1 events	58955
rejected events	32786
rejected %	55%

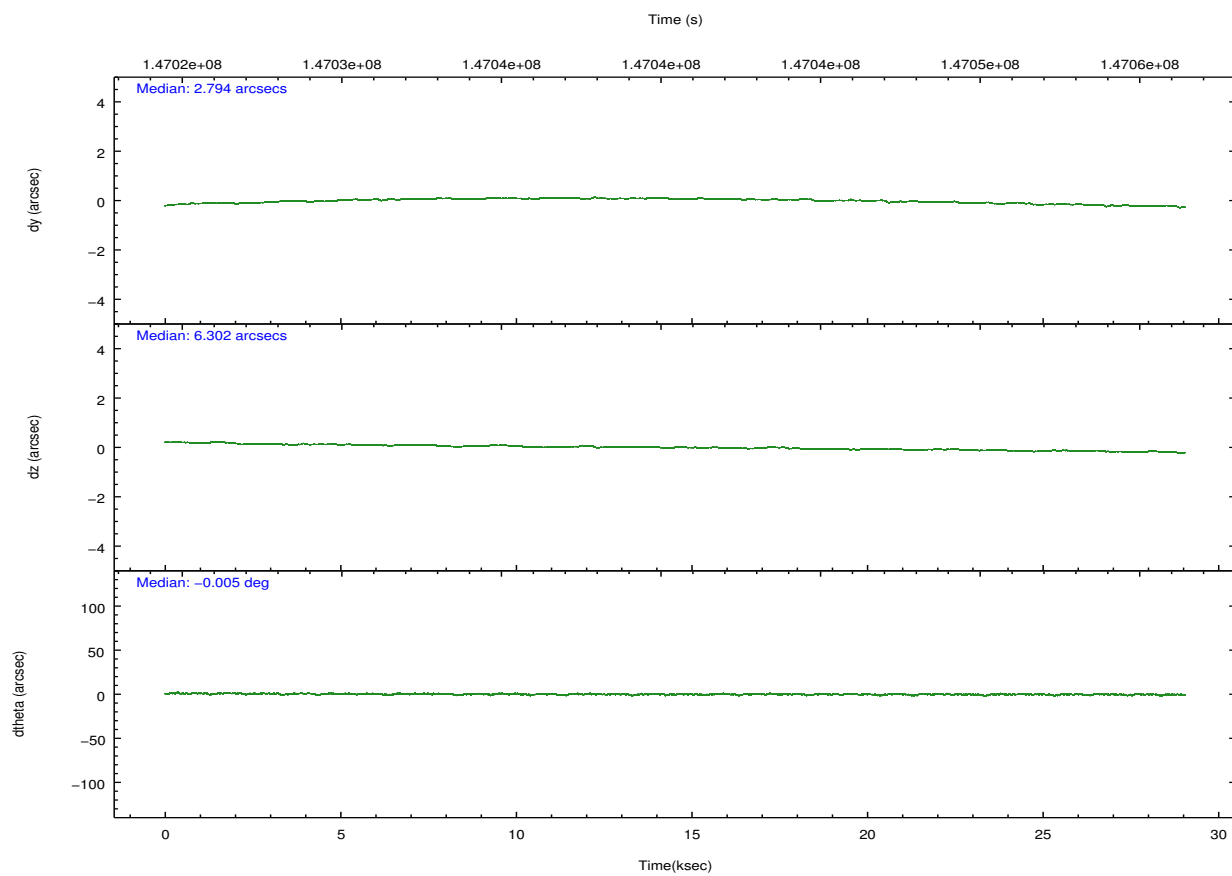
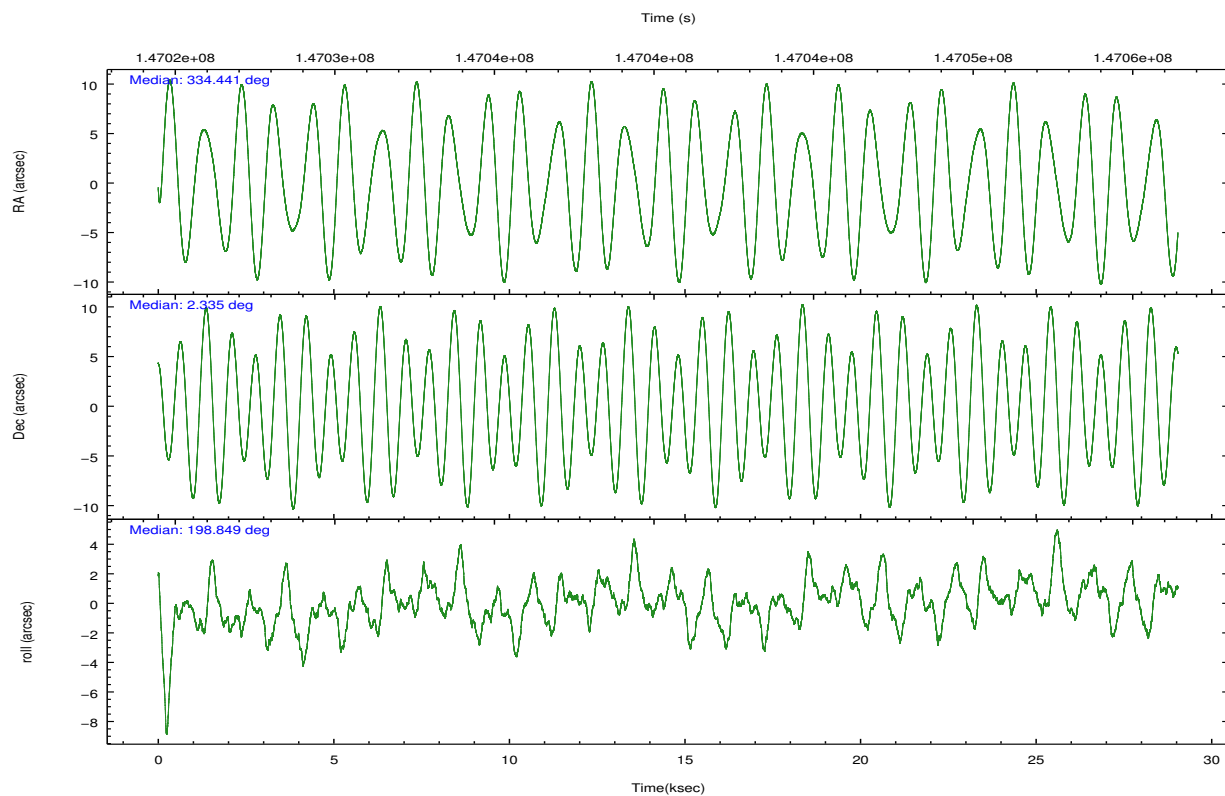
	<b>ccd 7</b>
grade 0 events	2898
	4%
grade 1 events	69
	0%
grade 2 events	5293
	8%
grade 3 events	3042
	5%
grade 4 events	2856
	4%
grade 5 events	5593
	9%
grade 6 events	12595
	21%
grade 7 events	26609
	45%

## 2.2 Compared Parameters

Parameter	Planned	Actual	Parameter	Planned	Actual
Instrument	ACIS	ACIS	Obspar format version number	7	7
Detector	ACIS-7	ACIS-7	Obspar file type	PREDICTED	ACTUAL
Grating	NONE	NONE	Obspar update status	NONE	UPDATED
Data mode	FAINT	FAINT	Number of optional ACIS chips dropped	0	0
Observation mode	POINTING	POINTING	On-chip summing requested	N	N
[deg] Pointing RA	334.458925	334.441249597362	Subarray requested	CUSTOM	1/4
[deg] Pointing Dec	2.355665	2.334922768747693	Subarray start row	384	385
[deg] Pointing Roll	198.695523	198.8528803472189	Subarray row count	256	256
[mm] SIM focus pos	-0.684267	-0.6828225247311905	Alternating exposures requested	N	N
[mm] SIM defocus	0	0.001444936568705701	[s] Primary exposure time	0.000000	0.8
[mm] SIM translation stage pos	-190.132523	-190.1400660498719			
[mm] SIM translation stage offset	0	0.00754346686406393			
[s] Observation start time (MET)	147026159.184000	147025167.42108			
Observation start date	2002-08-29T16:34:55	2002-08-29T16:19:27			
[s] Observation end time (MET)	147054959.184000	147056521.14738			
Observation end date	2002-08-30T00:34:55	2002-08-30T01:02:01			
Read mode	TIMED	TIMED			

## 2.3 Aspect



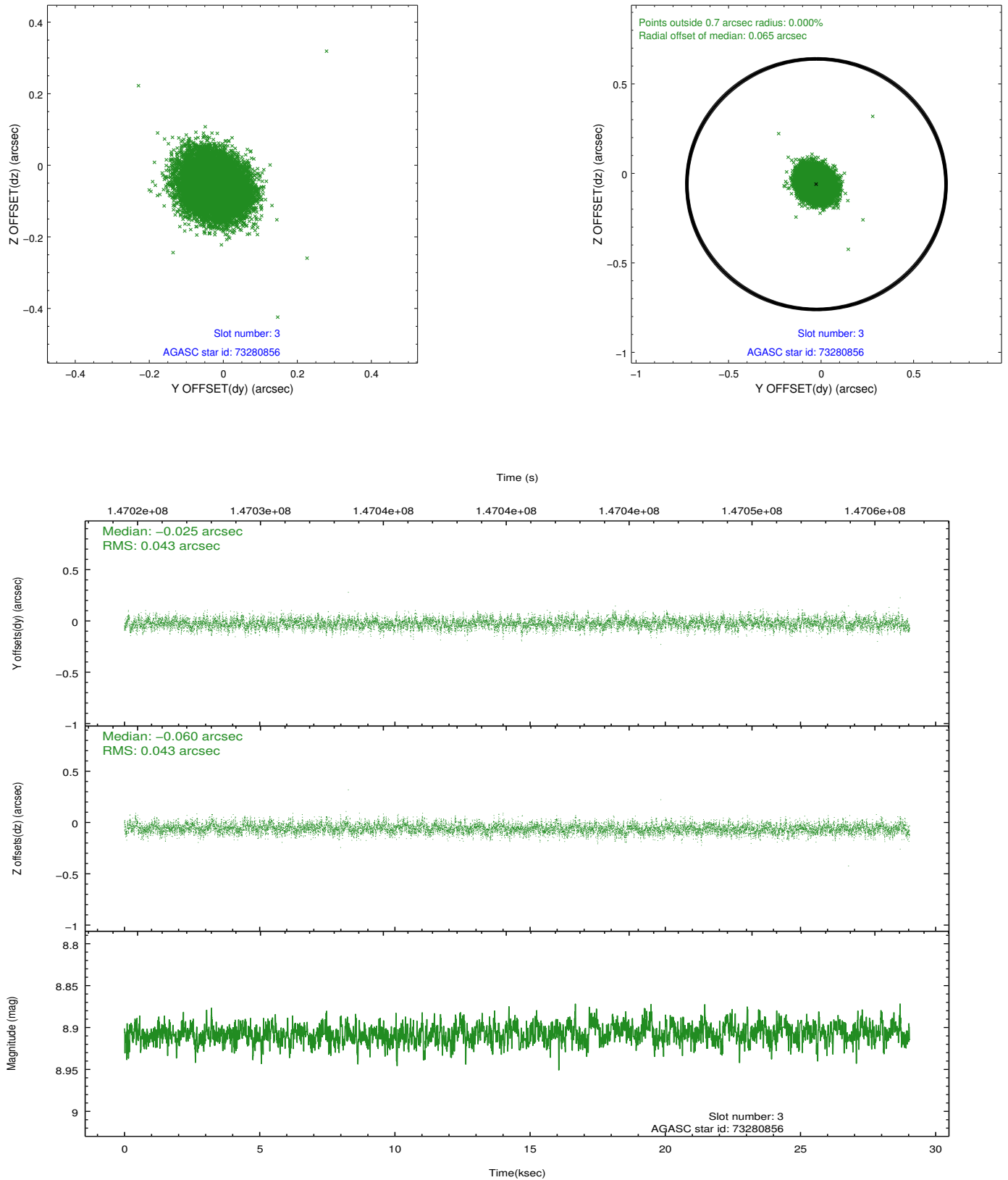


Slot Statistics

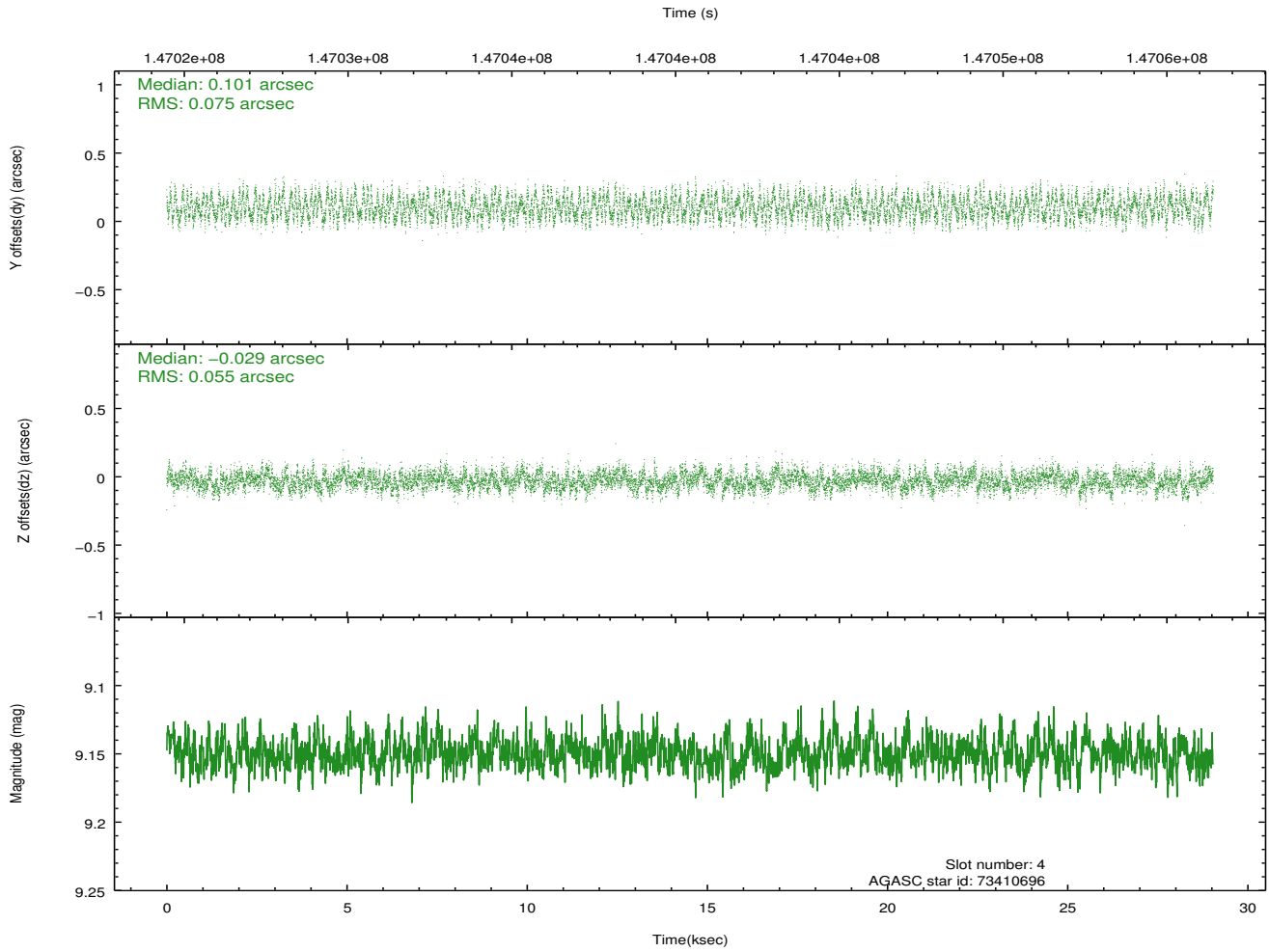
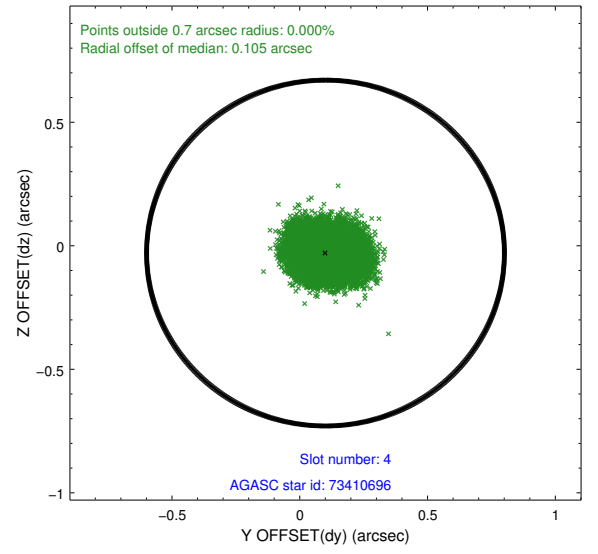
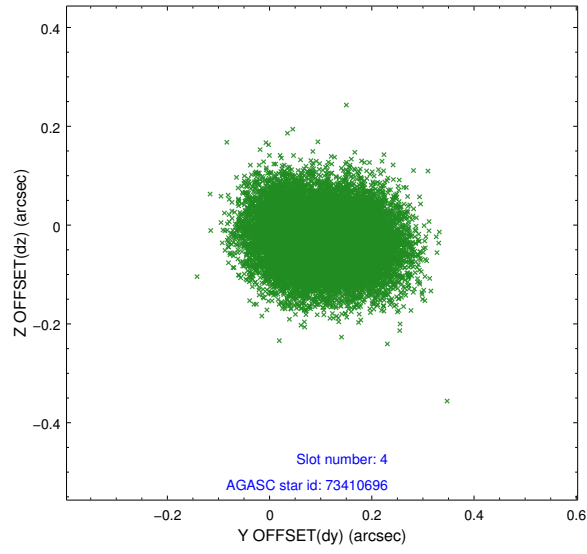
slot	status	id	mag	n_pts	med_dy	med_dz	dr1	dr2	ra	dec	mean_y	mean_z
0	FID	ACIS-S-2	7.12	7083	-0.034	0.008	0.008	0.014	0.000000	0.000000	-755.41	-1727.45
1	FID	ACIS-S-4	7.20	7083	-0.015	0.014	0.010	0.023	0.000000	0.000000	2157.81	181.01
2	FID	ACIS-S-5	7.24	7083	0.019	-0.013	0.010	0.017	0.000000	0.000000	-1808.13	174.67
3	GUIDE	73280856	8.91	14158	-0.025	-0.060	0.065	0.106	334.217234	1.963108	1276.83	1060.36
4	GUIDE	73410696	9.15	14165	0.101	-0.029	0.102	0.155	335.143857	2.037436	-1966.89	1874.96
5	GUIDE	73281048	8.33	14165	-0.151	0.010	0.055	0.087	333.891950	1.945638	2405.49	744.86
6	GUIDE	73283768	9.63	14149	0.091	0.114	0.079	0.129	334.099797	2.351472	1228.92	-399.14
7	GUIDE	73663840	9.61	14053	-0.020	-0.035	0.109	0.175	333.641863	2.713150	2370.86	-2161.18

## 2.4 Star Slots

### 2.4.1 Slot 3

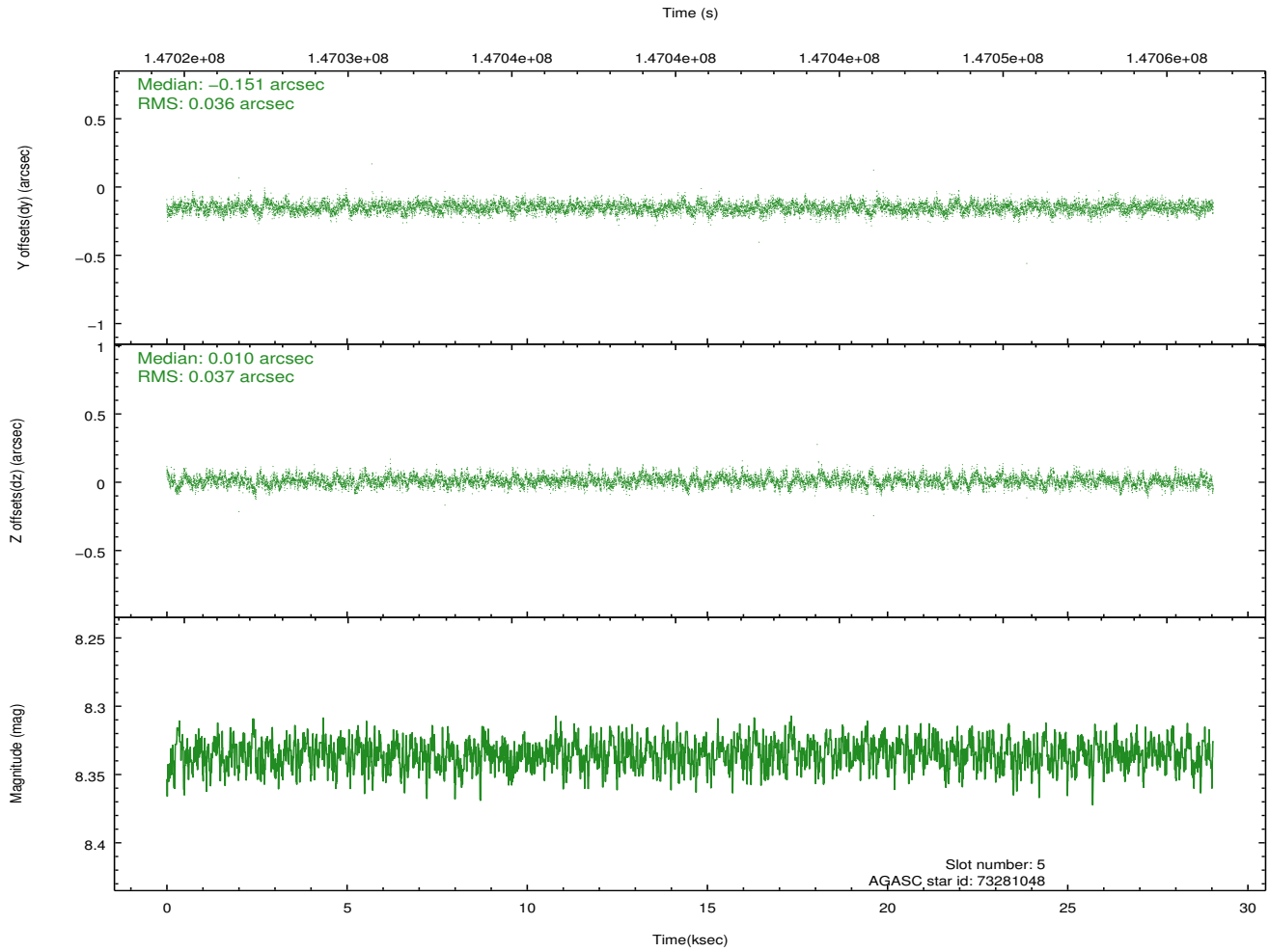
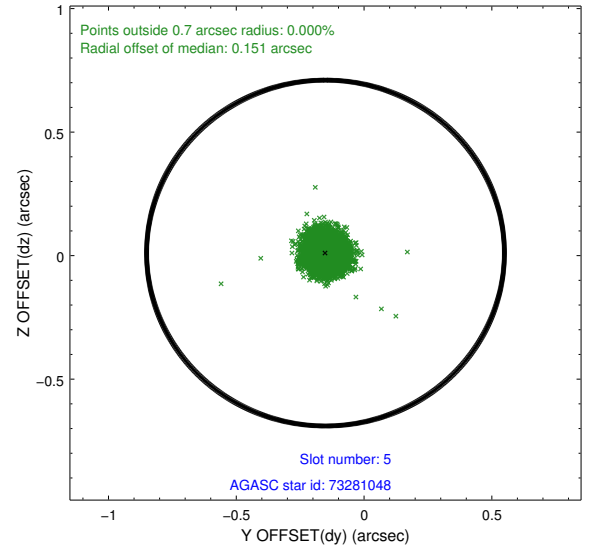
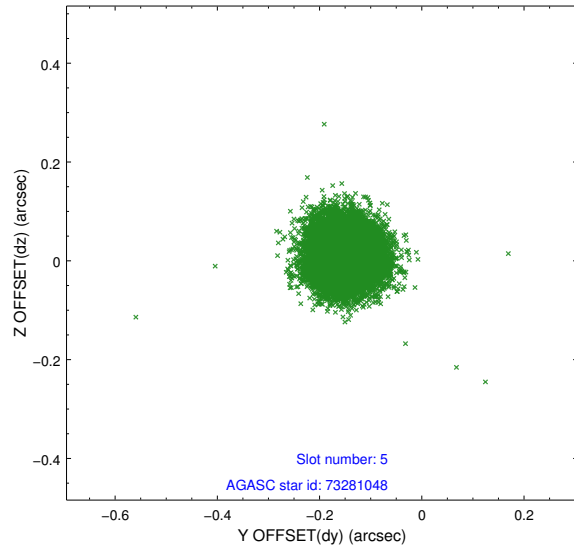


## 2.4.2 Slot 4

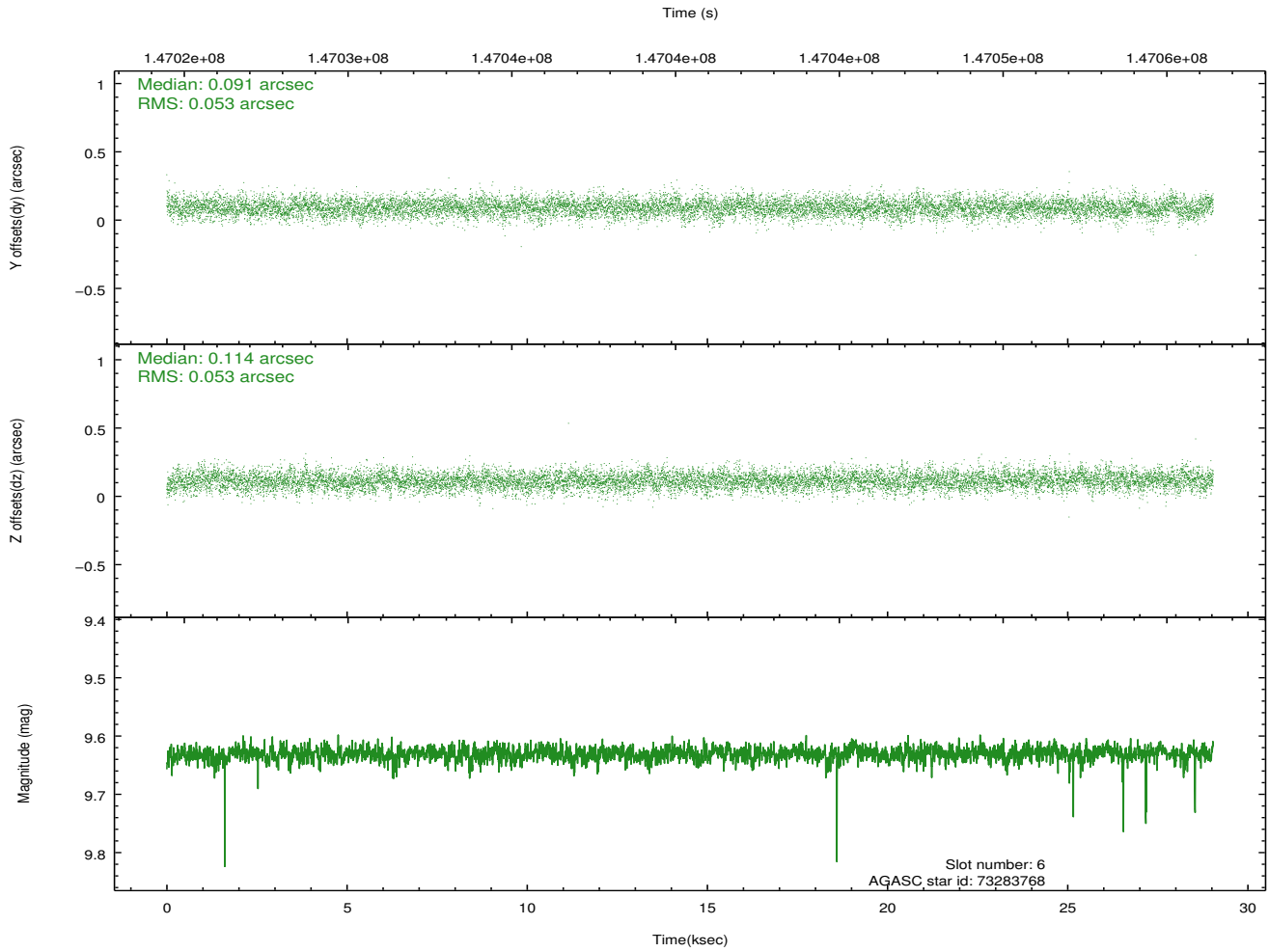
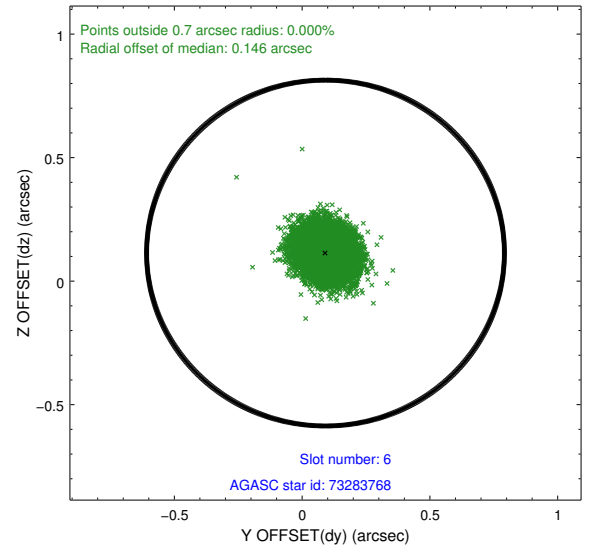
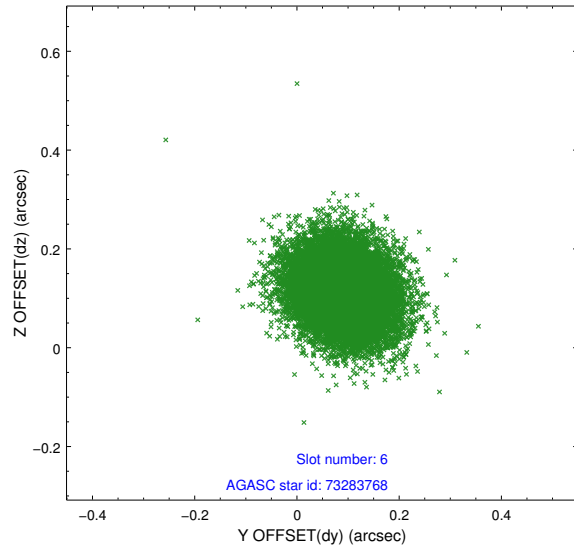




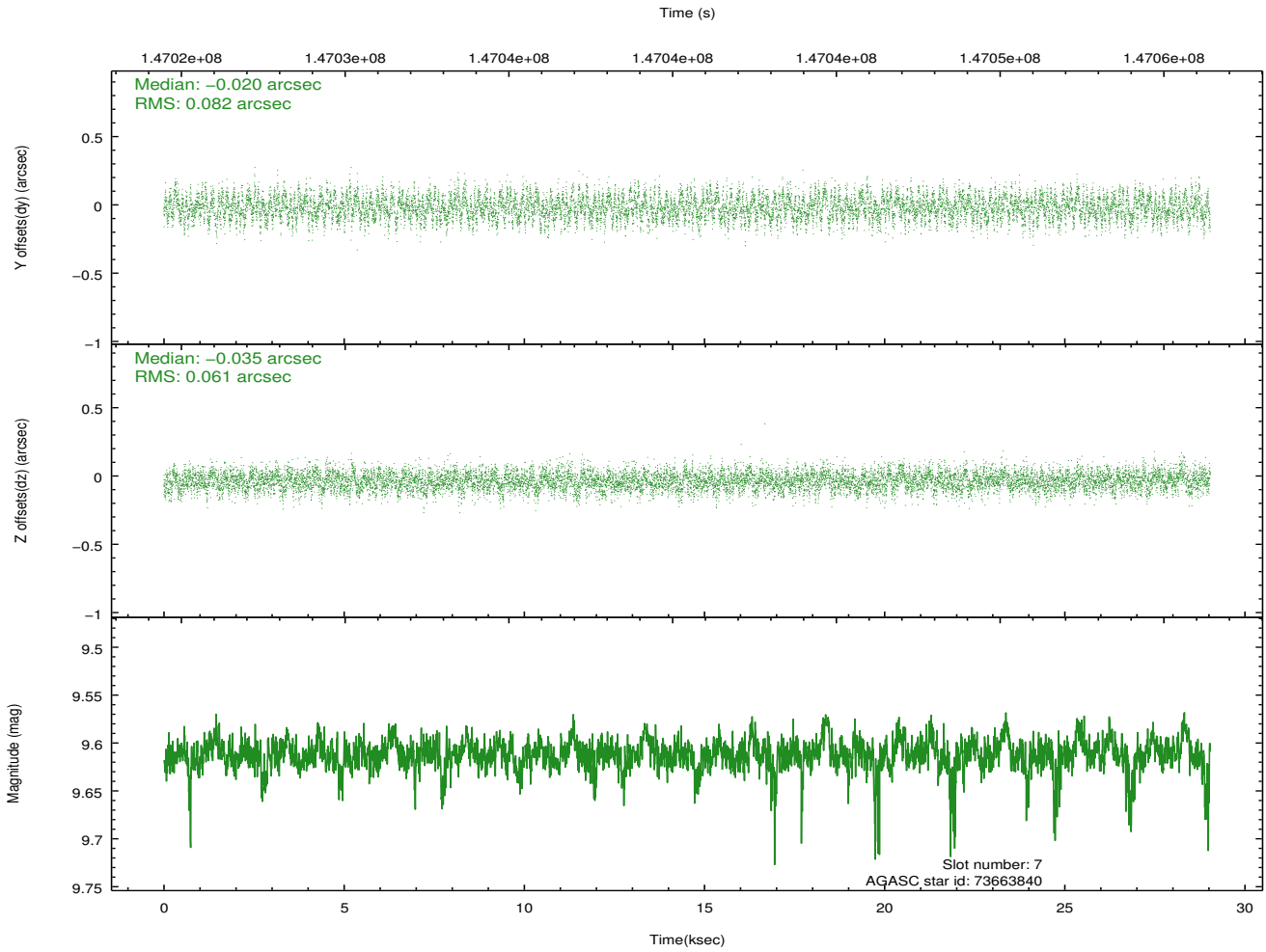
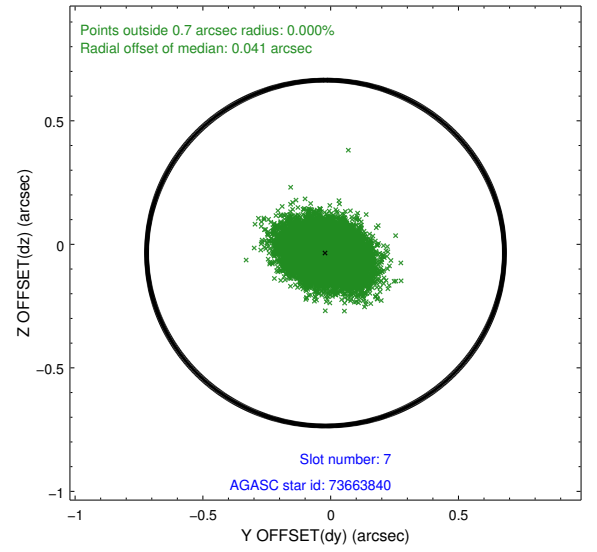
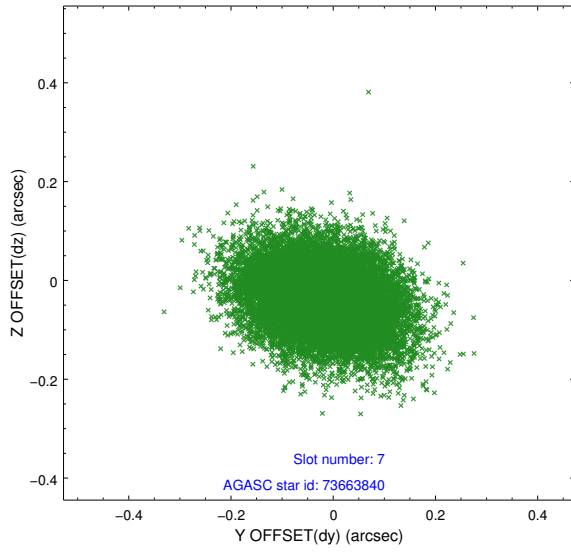
### 2.4.3 Slot 5



## 2.4.4 Slot 6

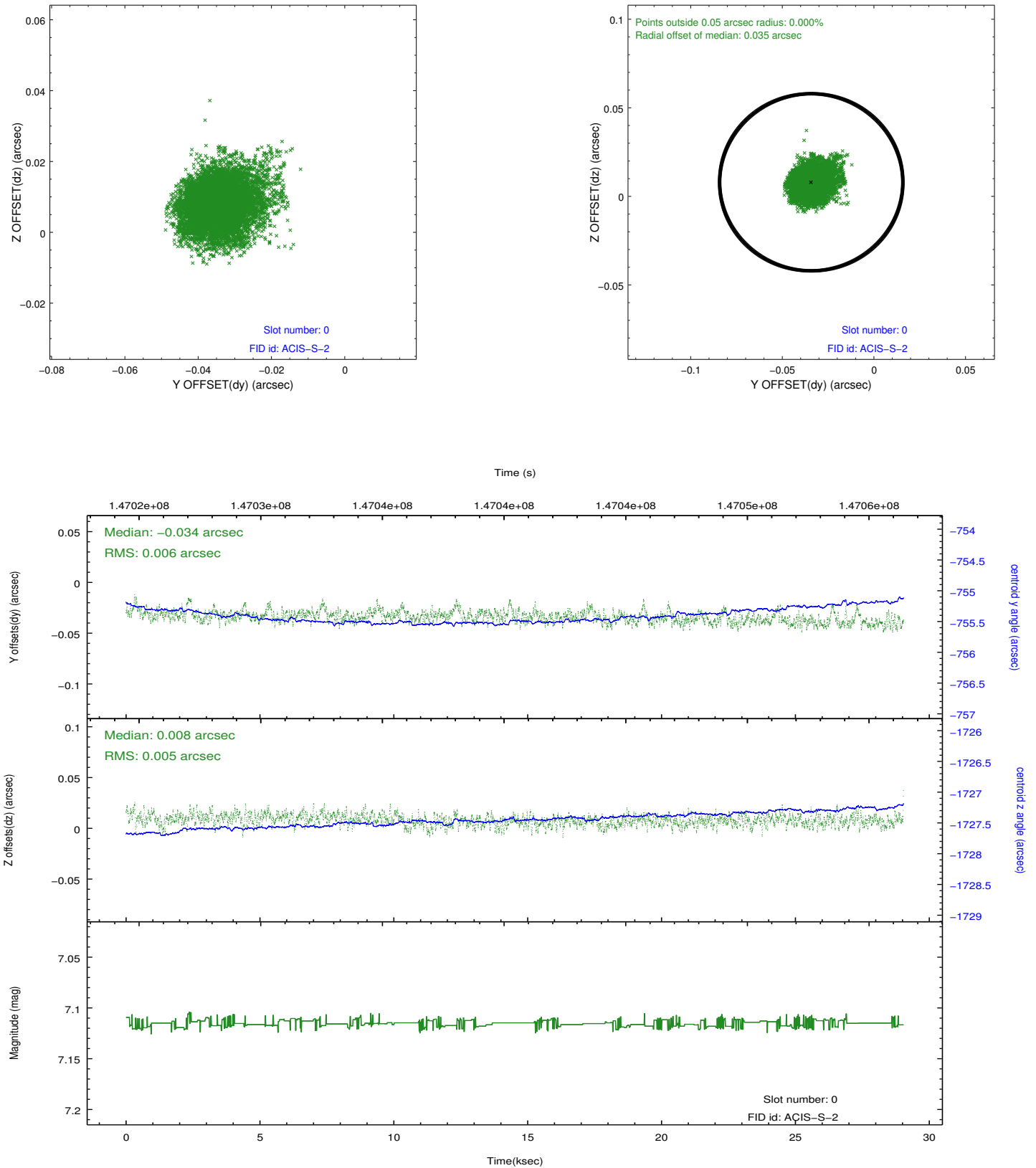


## 2.4.5 Slot 7

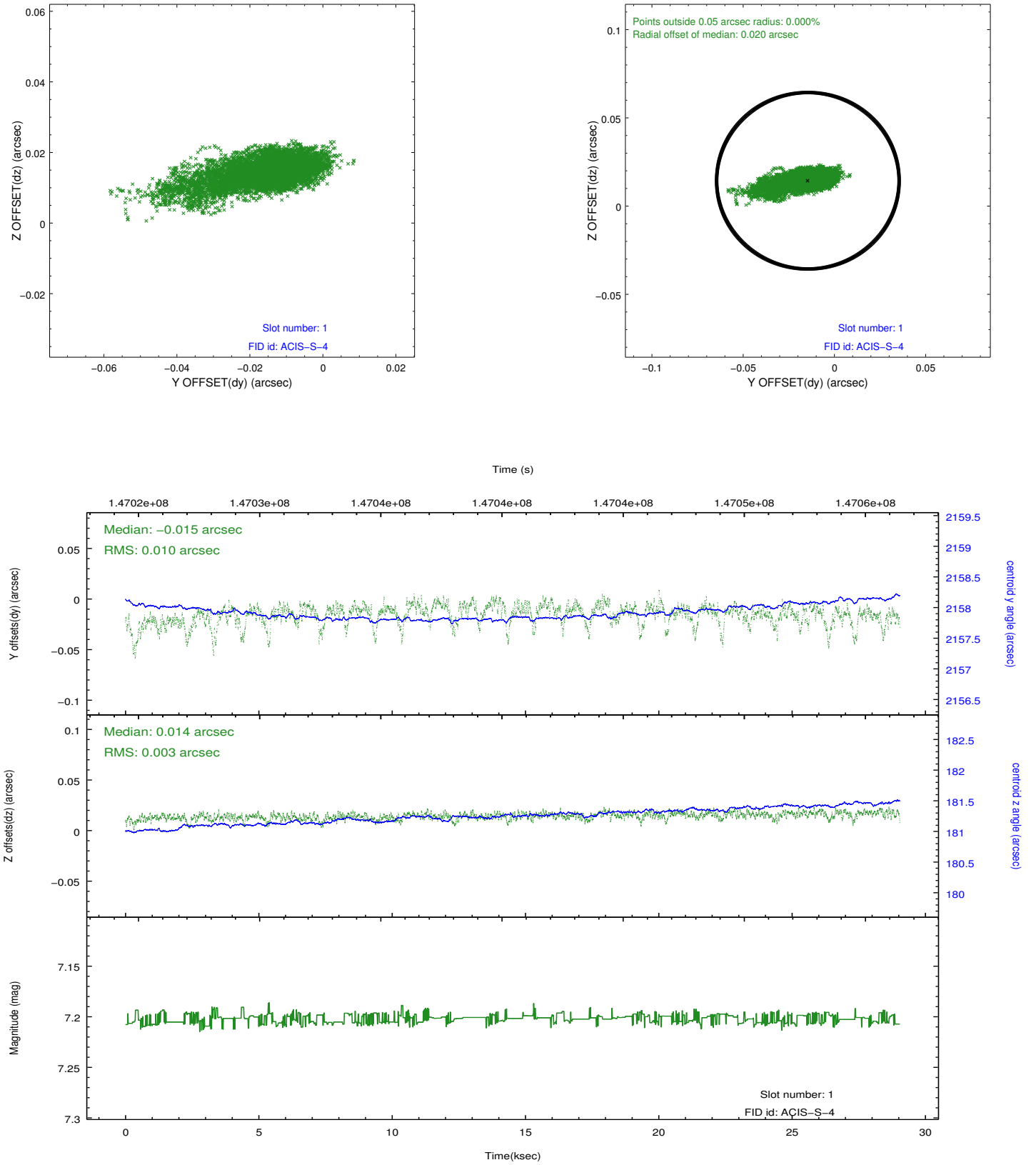


## 2.5 FID Slots

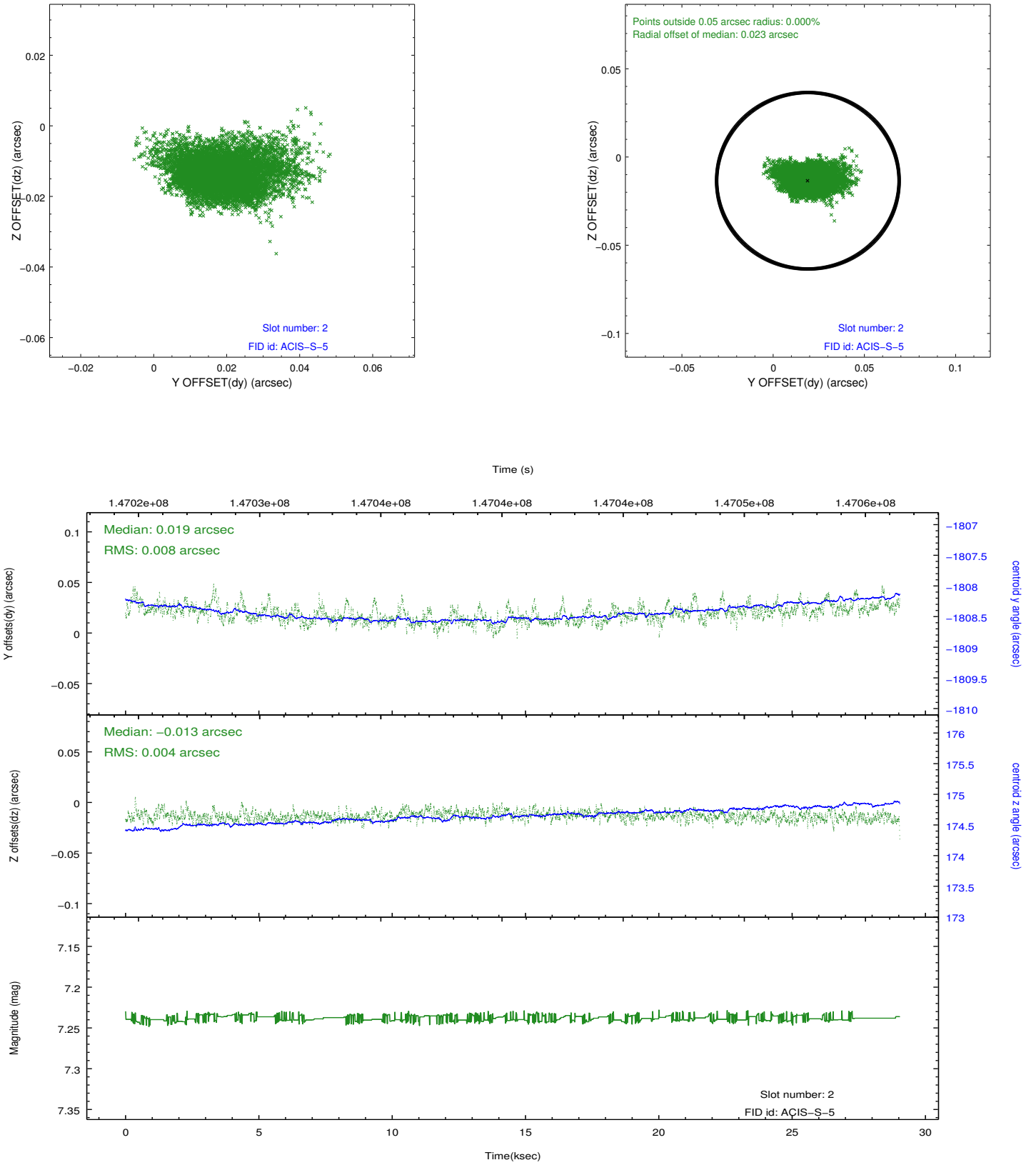
### 2.5.1 Slot 0



## 2.5.2 Slot 1



### 2.5.3 Slot 2



## **A Summary**

### **A.1 Status**

V&V Scientist	Jen Lauer
V&V Date (YYYY-MM-DD)	2012.12.06
V&V Edition	1
V&V Disposition and Status	OK
V&V Charge Time	29.041

### **A.2 Comments**