

V&V Reference Report

L2 ASCDS Version : 7.6.9

Observation 2973 - L2 Version 001
Chandra X-Ray Center

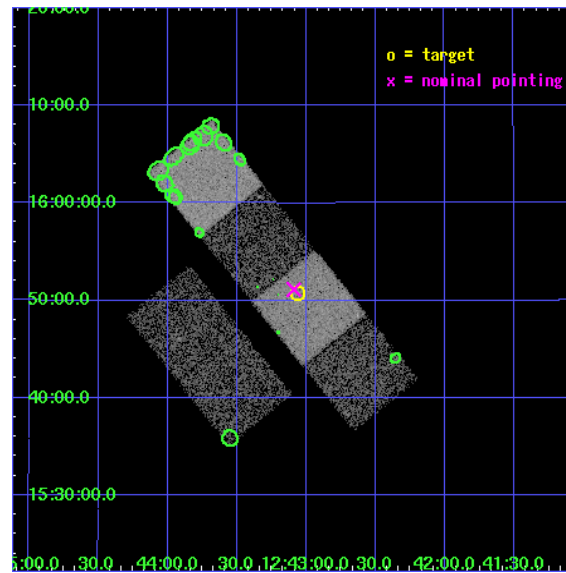
L2 Processing Date : Oct 12 2006

Contents

1	Front	2
2	OBI	3
2.1	OBI	3
2.1.1	Images	3
2.1.2	Bias	3
2.1.3	Parameters	4
2.1.4	Events	4
2.2	Compared Parameters	5
2.3	Aspect	6
2.4	Star Slots	9
2.4.1	Slot 3	9
2.4.2	Slot 4	10
2.4.3	Slot 6	11
2.4.4	Slot 7	12
2.5	FID Slots	13
2.5.1	Slot 0	13
2.5.2	Slot 1	14
2.5.3	Slot 2	15
3	Point Sources	16
A	Summary	17
A.1	Status	17
A.2	Comments	17

1 Front

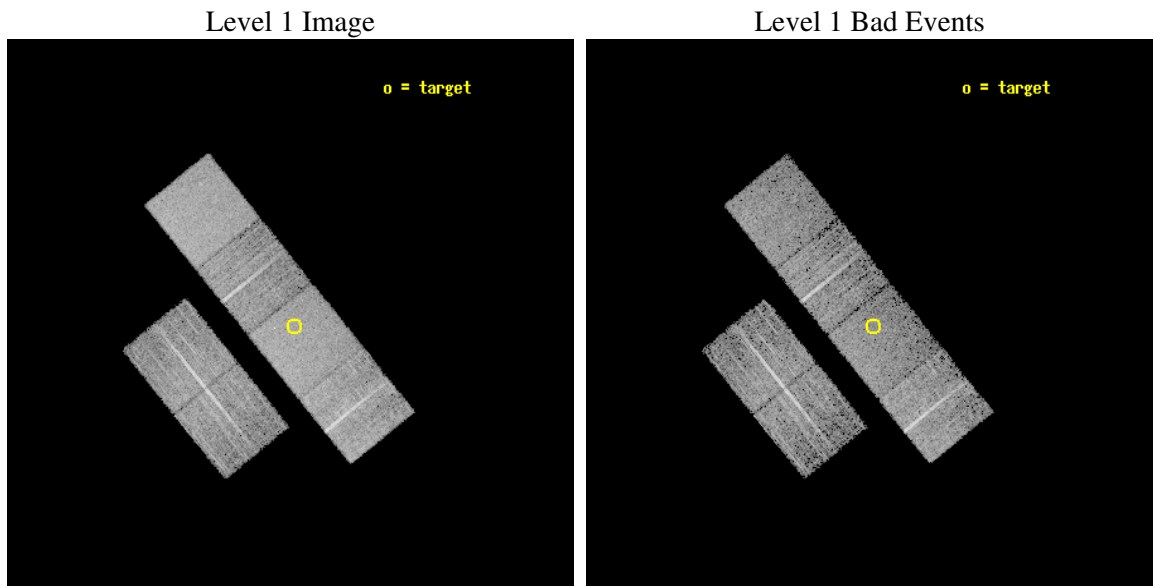
seq_num	700412
obs_id	2973
title	A COMPLETE X-RAY SAMPLE OF BROAD ABSORPTION LINE QSOS
observer	Professor Gordon Garmire
object	LBQS 1240+1607
dtcycle	0
cycle	P
ra_targ	190.765
dec_targ	15.846389
ra_nom	190.77228079352
dec_nom	15.852347731703
roll_nom	51.086627175338
revision	3
ontime	6735.9999749064
livetime	6650.7046872919
ontime2	6735.9999749064
ontime3	6735.9999749064
ontime5	6735.9999749064
ontime6	6735.9999749064
ontime7	6735.9999749064
ontime8	6732.7337635458
l2events	65344



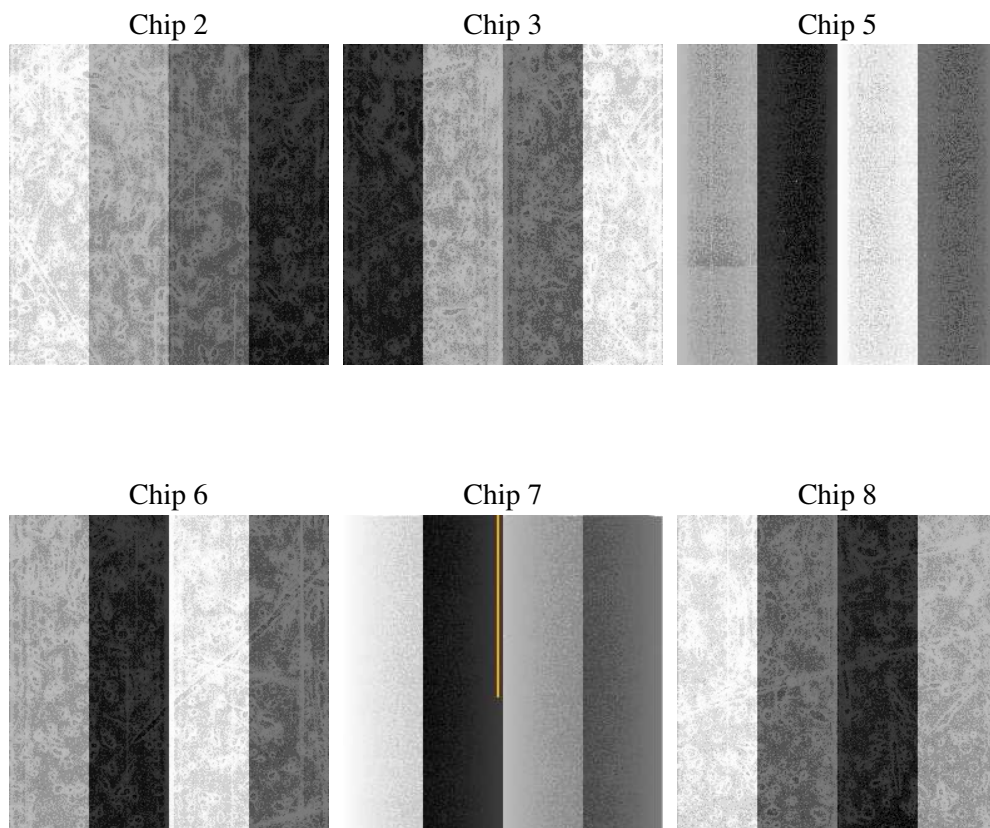
2 OBI

2.1 OBI

2.1.1 Images



2.1.2 Bias



2.1.3 Parameters

obi_num	1
ascdsver	7.6.9
caldbver	3.2.3
date	2006-10-12T14:32:06
revision	3

sched_exp_time	7000.000000
ontime	6738.0370999873
ontime2	6738.0370800793
ontime3	6738.0370501578
ontime5	6738.0370700657
ontime6	6738.0370501578
ontime7	6738.0370999873
ontime8	6734.7959902585
l1events	307636

2.1.4 Events

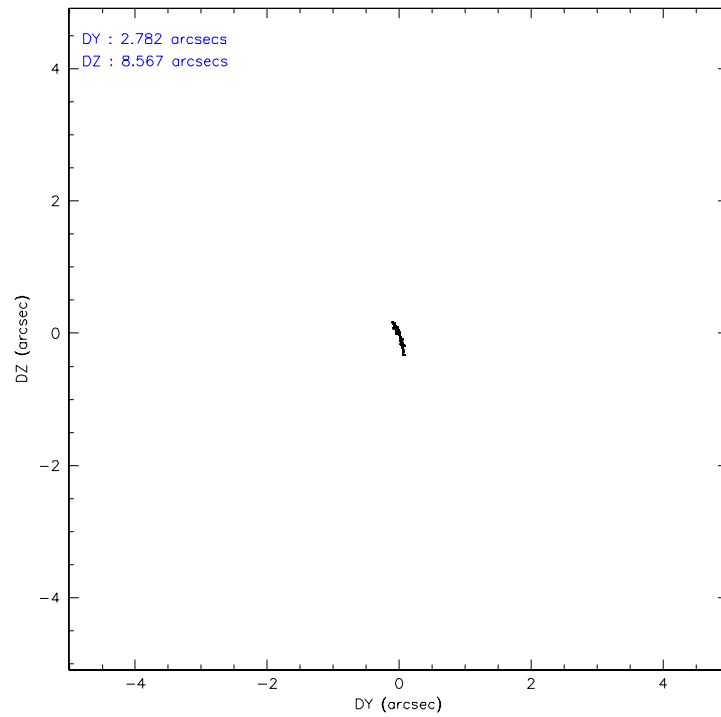
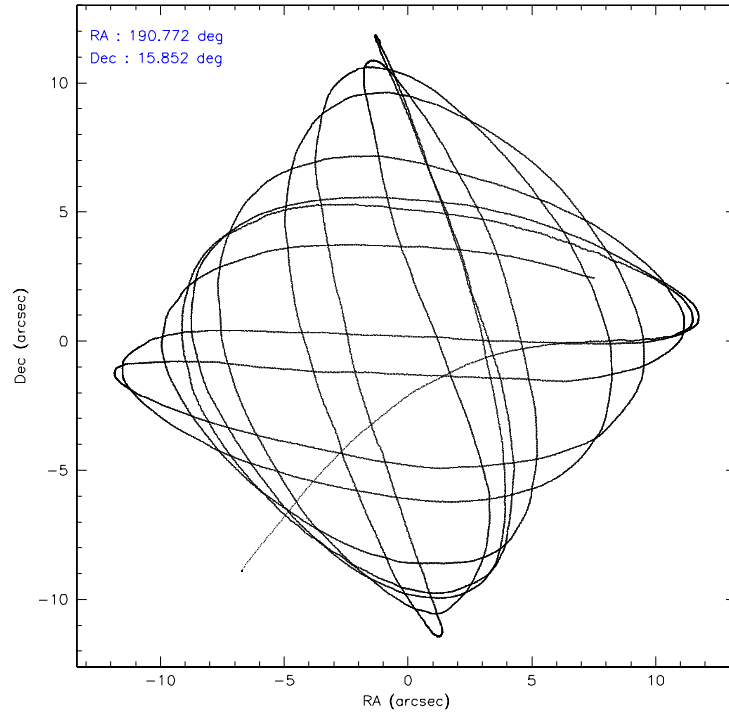
	ccd 2	ccd 3	ccd 5	ccd 6	ccd 7	ccd 8
level 1 events	45011	42983	61061	43745	56825	58011
rejected events	39895	38074	34639	38791	34797	46963
rejected %	88%	88%	56%	88%	61%	80%

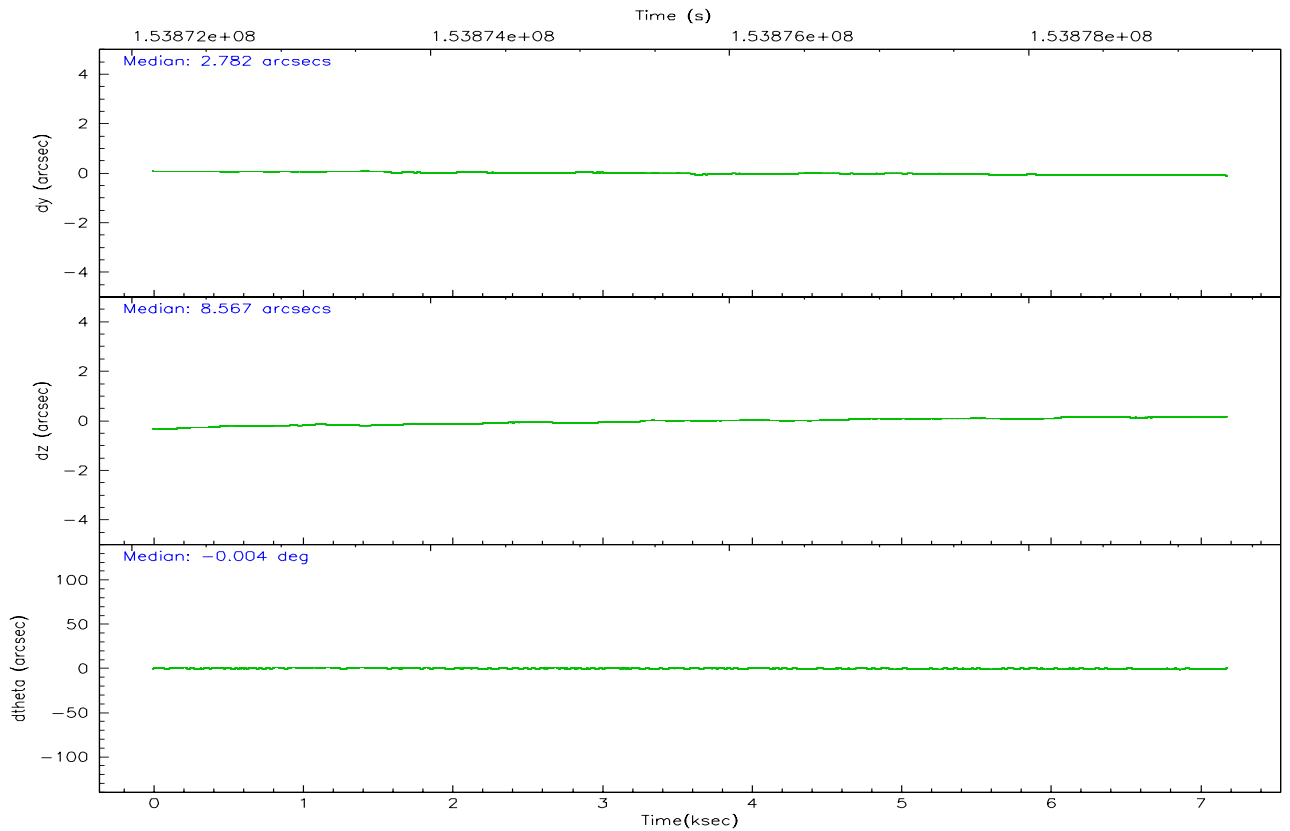
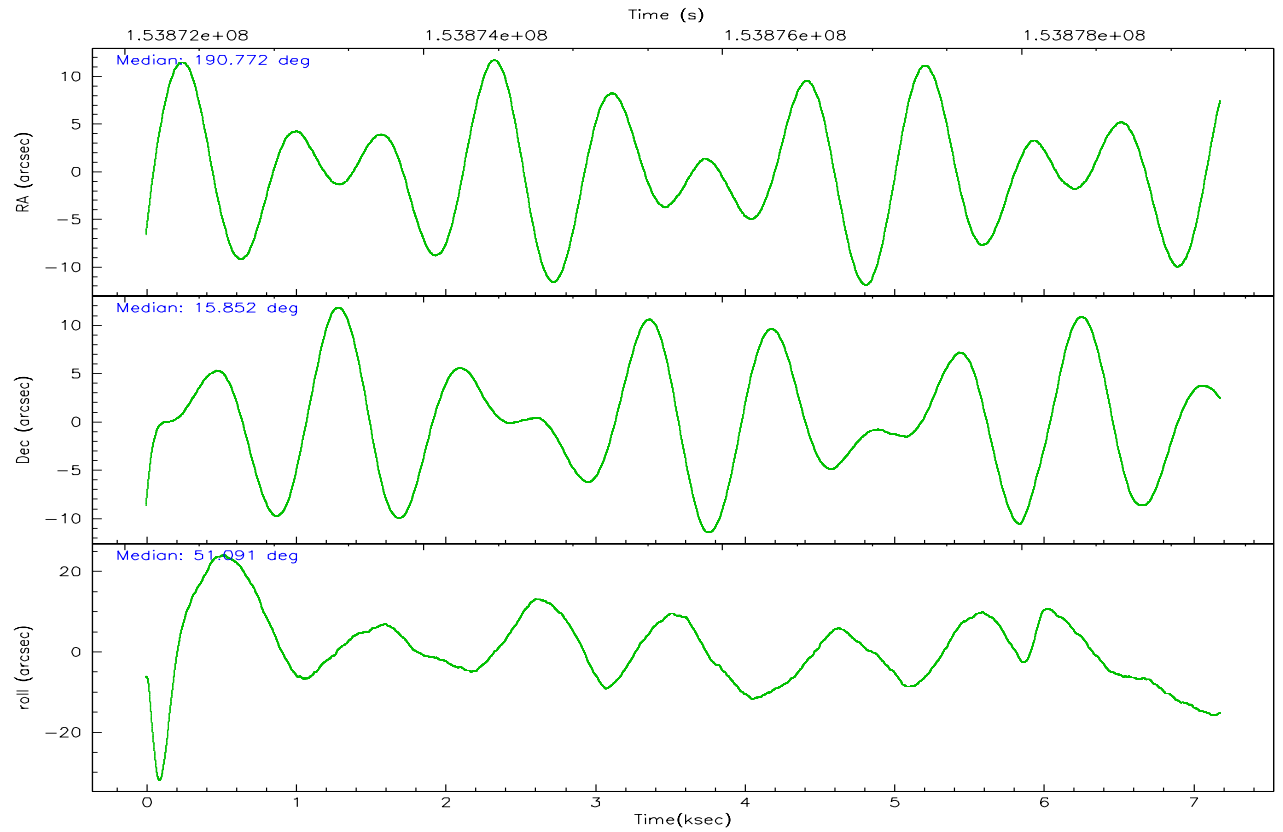
	ccd 2	ccd 3	ccd 5	ccd 6	ccd 7	ccd 8
grade 0 events	2318	2170	1237	2021	1450	3407
	5%	5%	2%	4%	2%	5%
grade 1 events	21	27	49	21	34	33
	0%	0%	0%	0%	0%	0%
grade 2 events	1051	919	8339	992	5478	2478
	2%	2%	13%	2%	9%	4%
grade 3 events	492	550	630	504	1173	1090
	1%	1%	1%	1%	2%	1%
grade 4 events	473	441	594	491	1116	1081
	1%	1%	0%	1%	1%	1%
grade 5 events	1673	1819	3019	1894	3819	2454
	3%	4%	4%	4%	6%	4%
grade 6 events	783	833	15630	948	12822	2996
	1%	1%	25%	2%	22%	5%
grade 7 events	38200	36224	31563	36874	30933	44472
	84%	84%	51%	84%	54%	76%

2.2 Compared Parameters

Parameter	Planned	Actual	Parameter	Planned	Actual
Instrument	ACIS	ACIS	Obspar format version number	6	6
Detector	ACIS-235678	ACIS-235678	Obspar file type	PREDICTED	ACTUAL
Grating	NONE	NONE	Obspar update status	NONE	UPDATED
Data mode	FAINT	FAINT	Number of optional ACIS chips dropped	0	0
Observation mode	POINTING	POINTING	On-chip summing requested	N	N
Pointing RA	190.768256	190.772280793525	Subarray requested	NONE	NONE
Pointing Dec	15.825386	15.85234773170291	Alternating exposures requested	N	N
Pointing Roll	50.931049	51.08662717533848	Primary exposure time	0.000000	3.2
SIM focus pos (mm)	-0.684267	-0.6828225247311905			
SIM defocus (mm)	0	0.001444936568705701			
SIM translation stage pos (mm)	-190.132523	-190.1400660498719			
SIM translation stage offset (mm)	0	0.00754346686406393			
Observation start time	153872321.184000	153871531.17983			
Observation start date	2002-11-16T22:17:37	2002-11-16T22:05:31			
Observation end time	153879321.184000	153879502.60517			
Observation end date	2002-11-17T00:14:17	2002-11-17T00:18:22			
Read mode	TIMED	TIMED			

2.3 Aspect



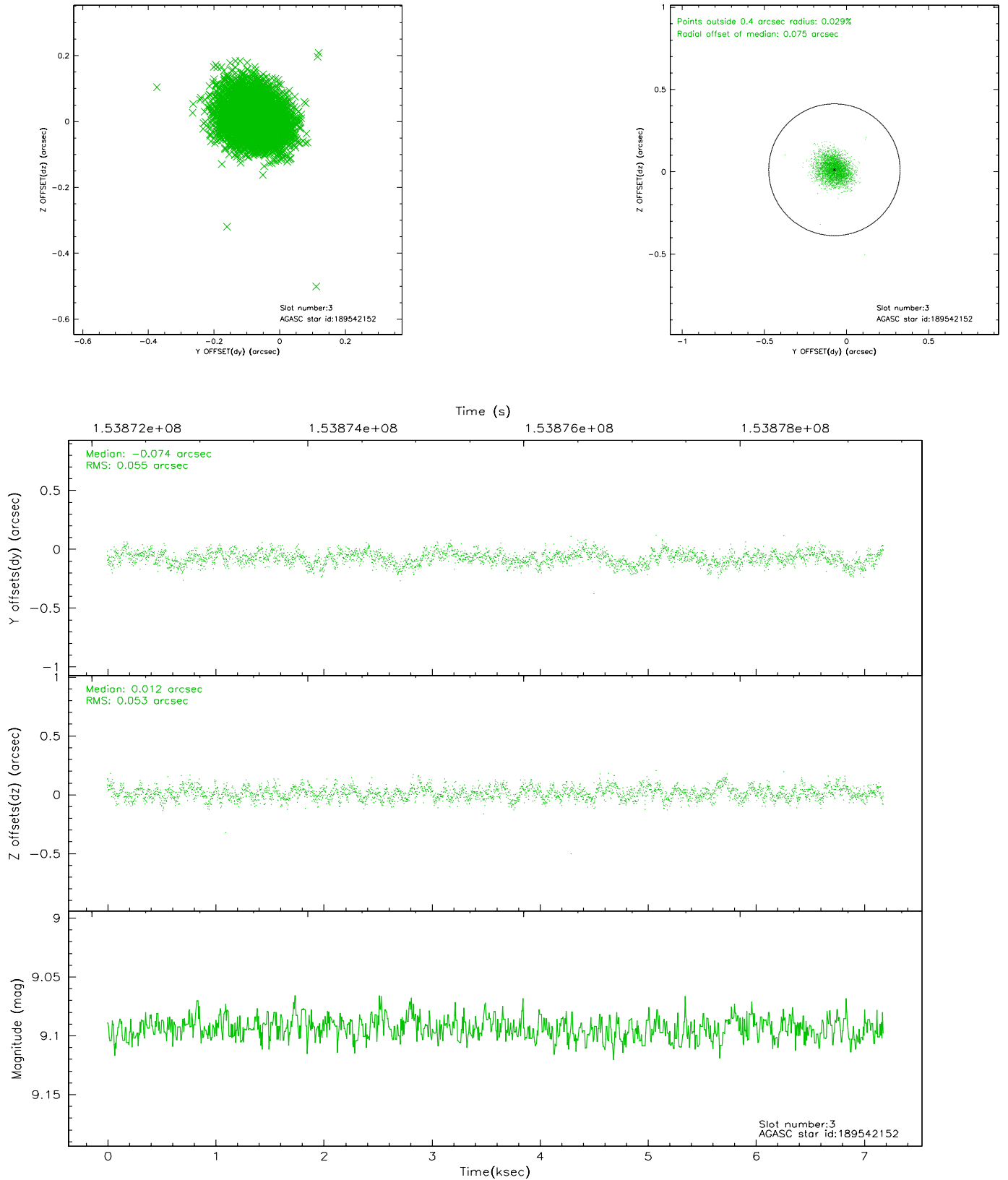


Slot Statistics

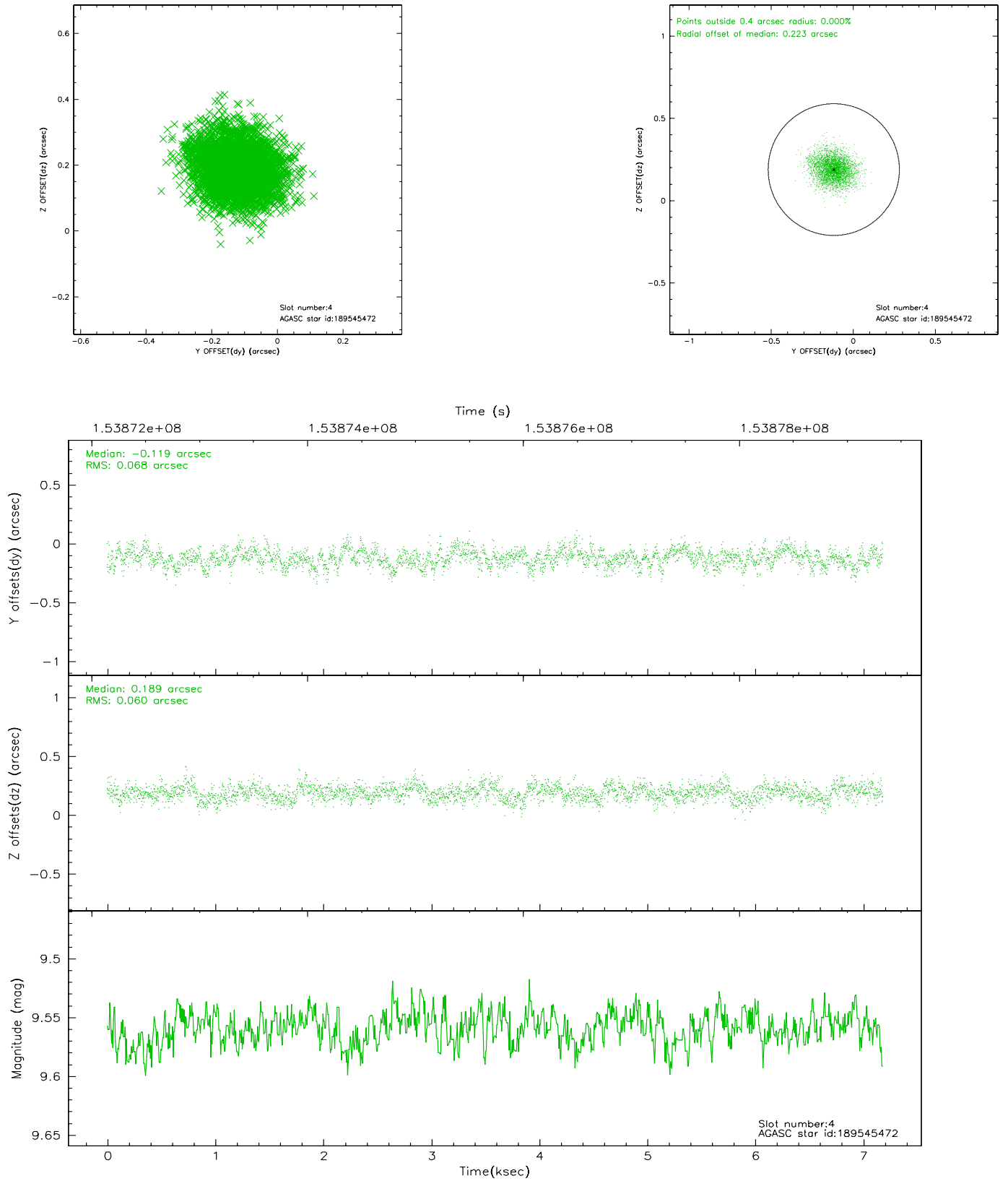
slot	status	id	mag	n_pts	med_dy	med_dz	dr1	dr2	ra	dec	mean_y	mean_z
0	FID	ACIS-S-2	7.11	1752	-0.005	0.018	0.008	0.014	0.000000	0.000000	-755.43	-1729.72
1	FID	ACIS-S-4	7.20	1752	-0.051	-0.002	0.005	0.010	0.000000	0.000000	2157.45	177.90
2	FID	ACIS-S-5	7.24	1753	0.025	-0.006	0.007	0.012	0.000000	0.000000	-1807.20	172.49
3	GUIDE	189542152	9.09	3504	-0.074	0.012	0.081	0.131	190.948751	15.714368	83.87	-737.63
4	GUIDE	189545472	9.56	3503	-0.119	0.189	0.097	0.159	191.491172	15.770525	1428.72	-2066.76
5	OMITTED		0.00	0	0.000	0.000	0.000	0.000	0.000000	0.000000	0.00	0.00
6	GUIDE	189539224	7.60	3505	0.247	-0.054	0.072	0.111	190.277008	15.376622	-2326.97	305.19
7	GUIDE	189537824	10.46	3502	-0.053	-0.147	0.188	0.304	190.661171	16.008264	277.50	702.28

2.4 Star Slots

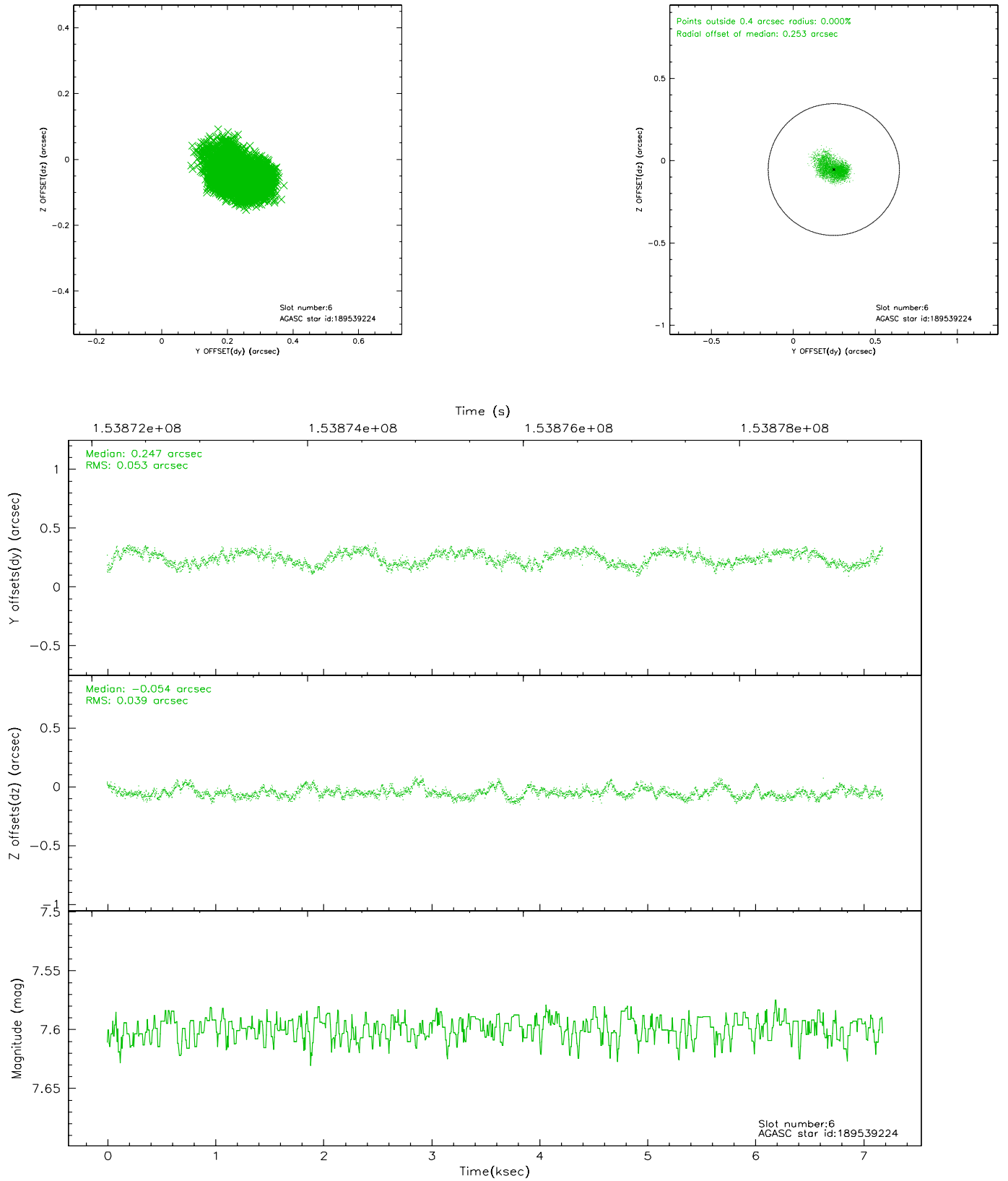
2.4.1 Slot 3



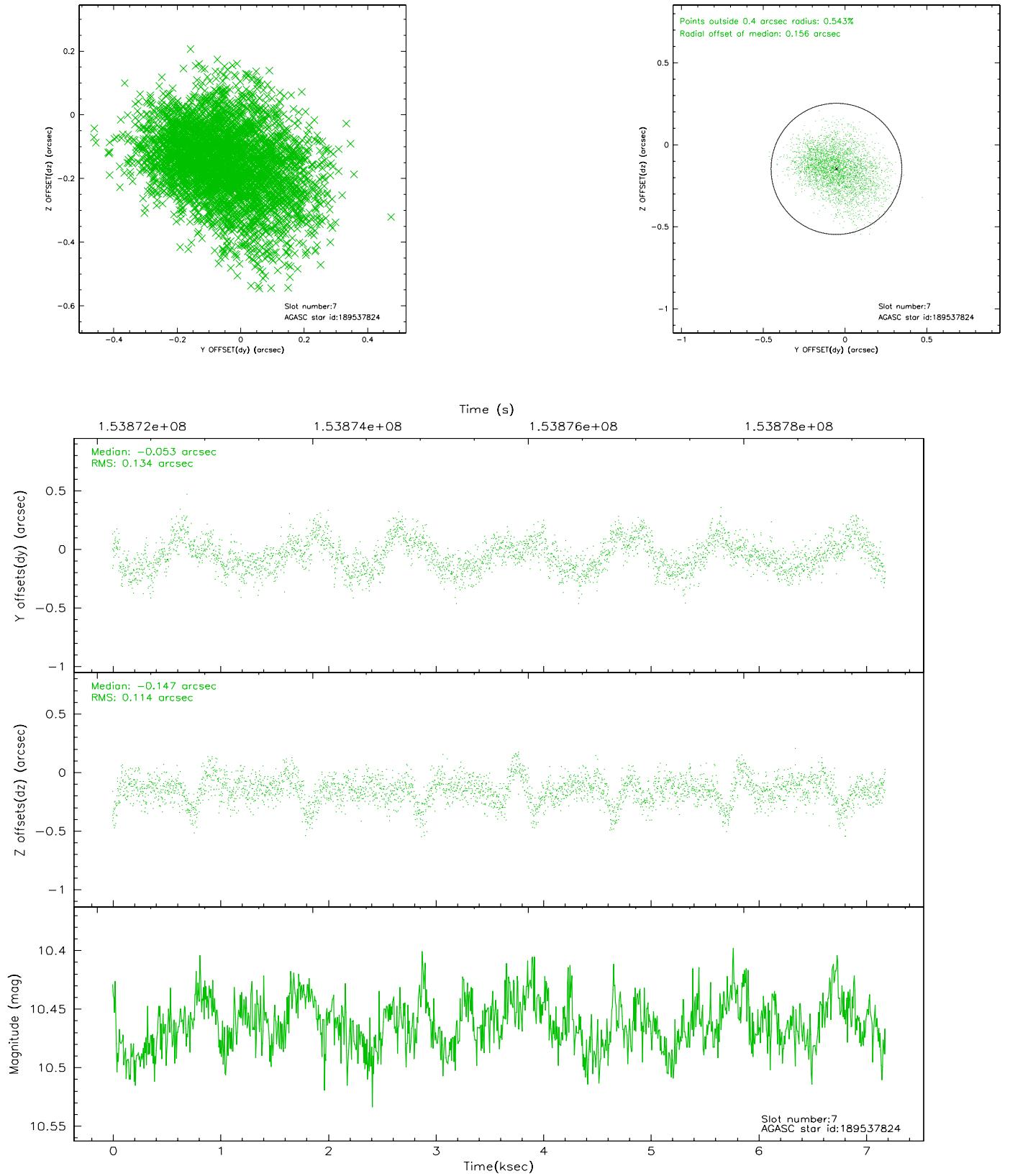
2.4.2 Slot 4



2.4.3 Slot 6

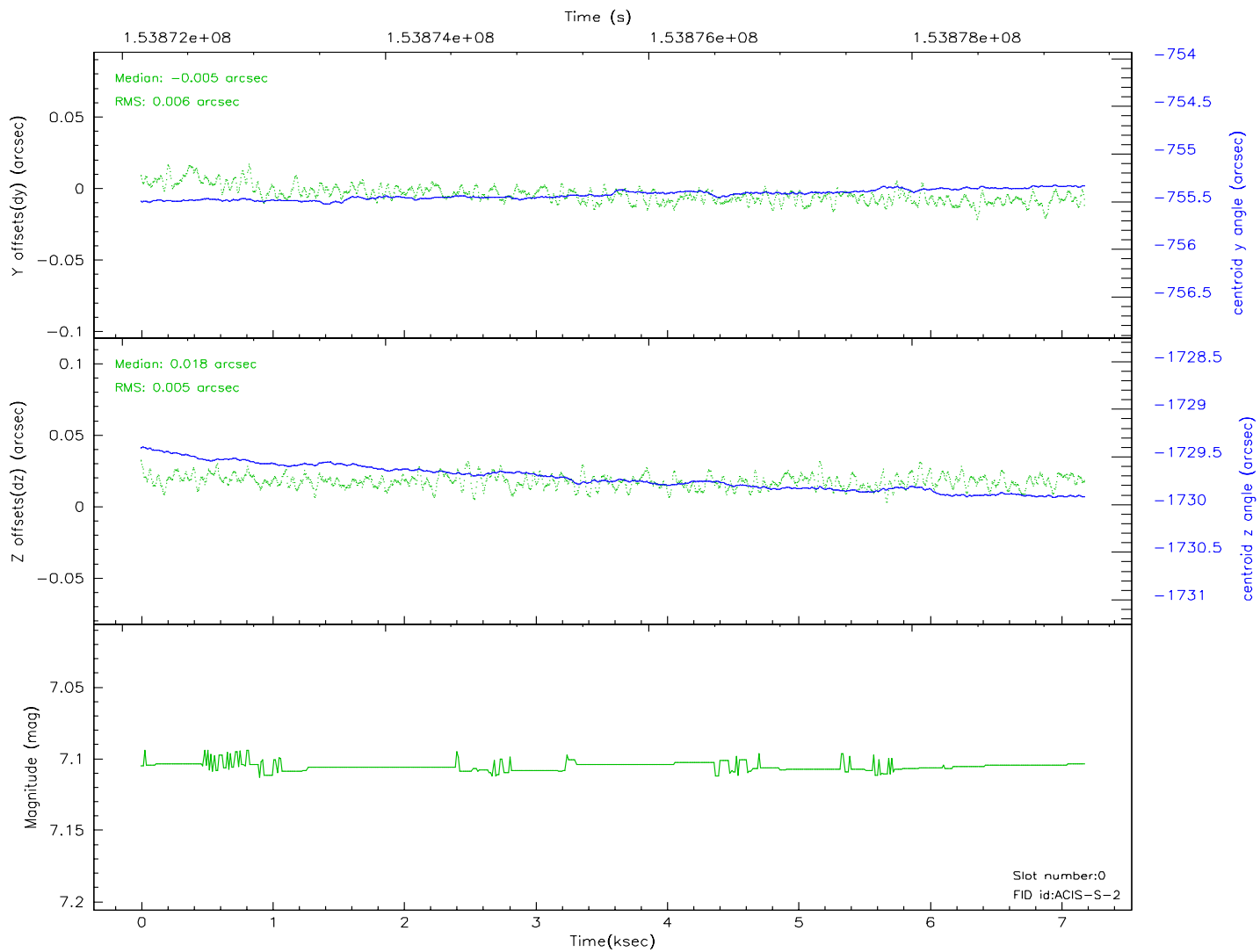
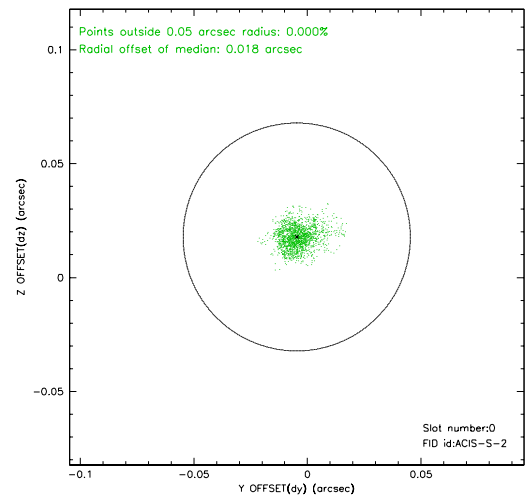
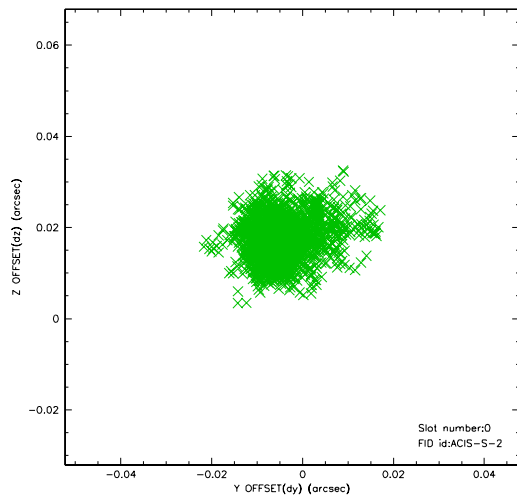


2.4.4 Slot 7

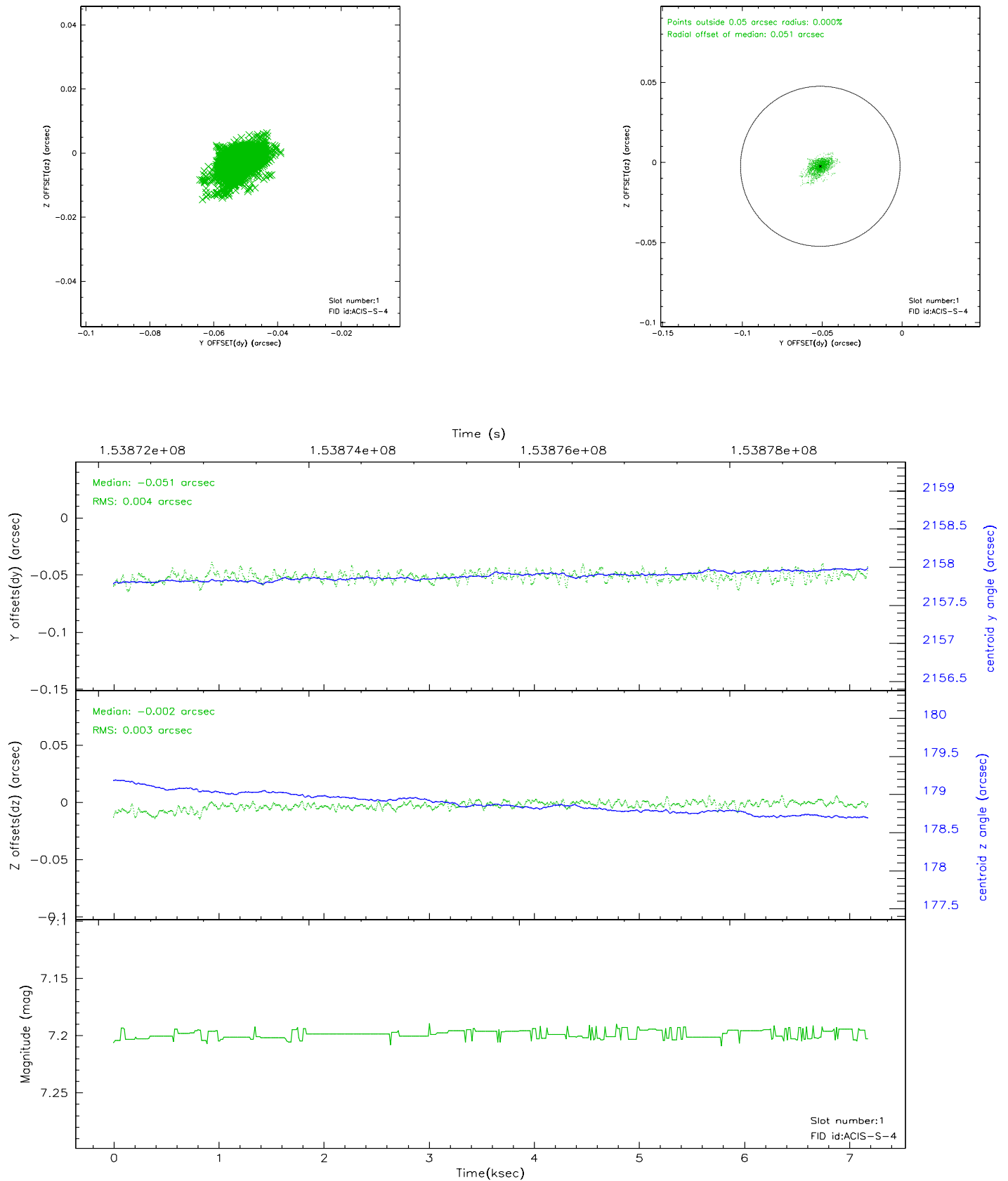


2.5 FID Slots

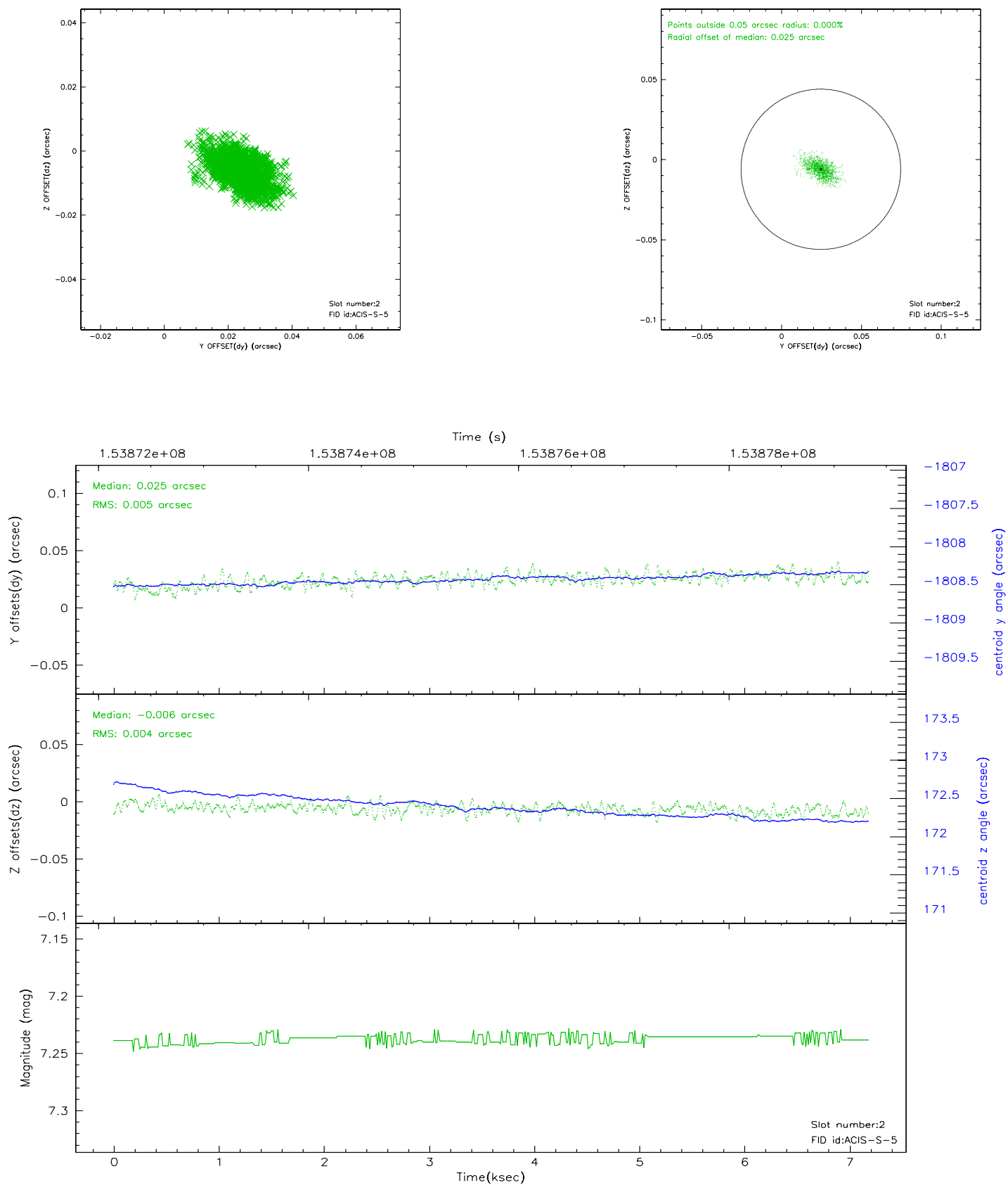
2.5.1 Slot 0



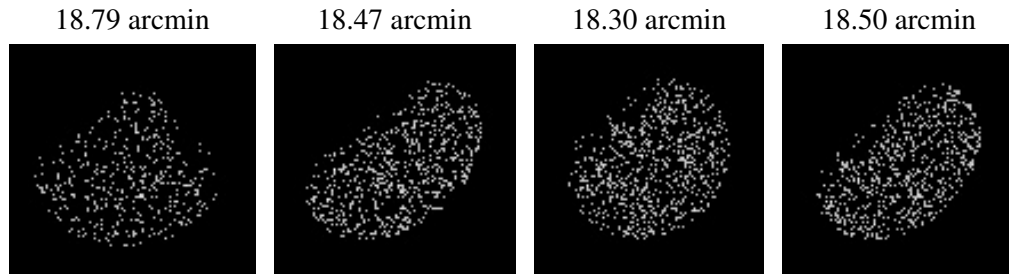
2.5.2 Slot 1



2.5.3 Slot 2



3 Point Sources



A Summary

A.1 Status

V&V Scientist	Jen Lauer
V&V Date (YYYY-MM-DD)	2010.10.01
V&V Edition	2
V&V Disposition and Status	OK
V&V Charge Time	6.73

A.2 Comments

The guide star in slot 5 was manually excluded from the processing due to poor data quality.