

V&V Reference Report

L2 ASCDS Version : 7.6.9

Observation 2965 - L2 Version 001
Chandra X-Ray Center

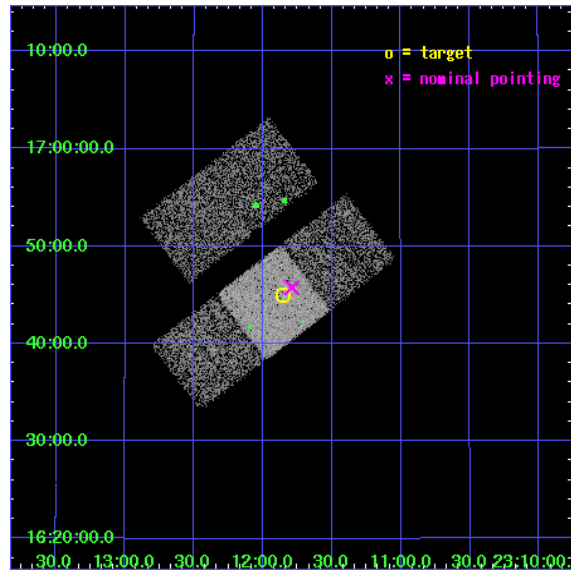
L2 Processing Date : Sep 30 2006

Contents

1	Front	2
2	OBI	3
2.1	OBI	3
2.1.1	Images	3
2.1.2	Bias	3
2.1.3	Parameters	4
2.1.4	Events	4
2.2	Compared Parameters	5
2.3	Aspect	6
2.4	Star Slots	9
2.4.1	Slot 3	9
2.4.2	Slot 4	10
2.4.3	Slot 5	11
2.4.4	Slot 6	12
2.4.5	Slot 7	13
2.5	FID Slots	14
2.5.1	Slot 0	14
2.5.2	Slot 1	15
2.5.3	Slot 2	16
3	Point Sources	17
A	Summary	18
A.1	Status	18
A.2	Comments	18

1 Front

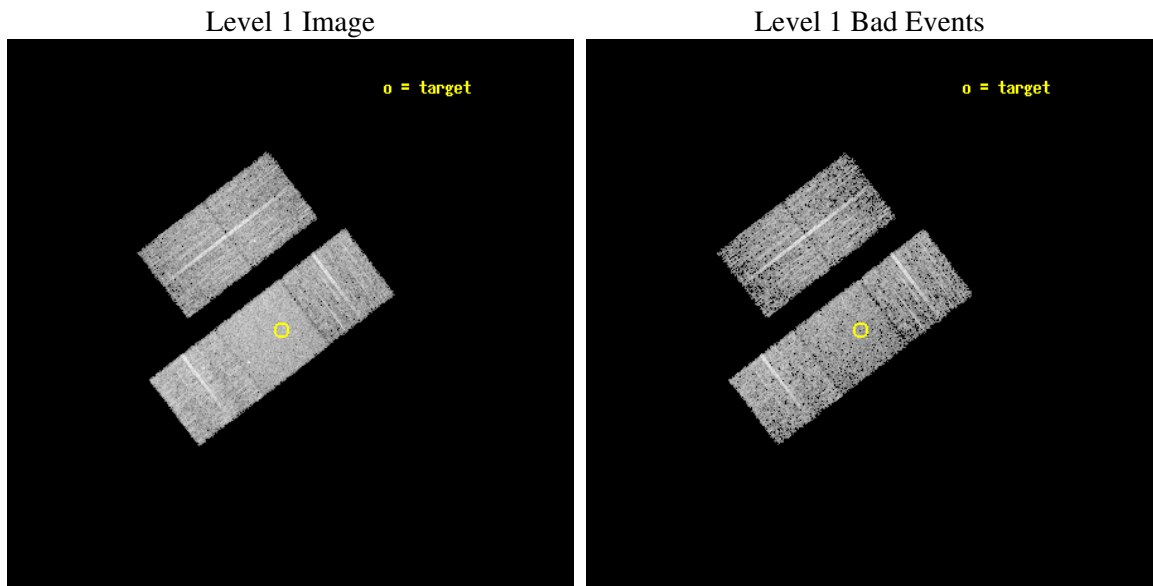
seq_num	700404
obs_id	2965
title	A SNAPSHOT SURVEY OF THE OPTICALLY SELECTED TYPE-2 QUASARS
observer	PROF. S. DJORGOVSKI
object	PSS 2311+1644
dtcycle	0
cycle	P
ra_targ	347.96375
dec_targ	16.749167
ra_nom	347.94765165586
dec_nom	16.763106906566
roll_nom	142.55969158432
revision	2
ontime	5105.6999901831
livetime	5038.9902610497
ontime2	5105.6999901831
ontime3	5105.6999901831
ontime6	5105.6999901831
ontime7	5105.6999901831
ontime8	5105.6999901831
l2events	32419



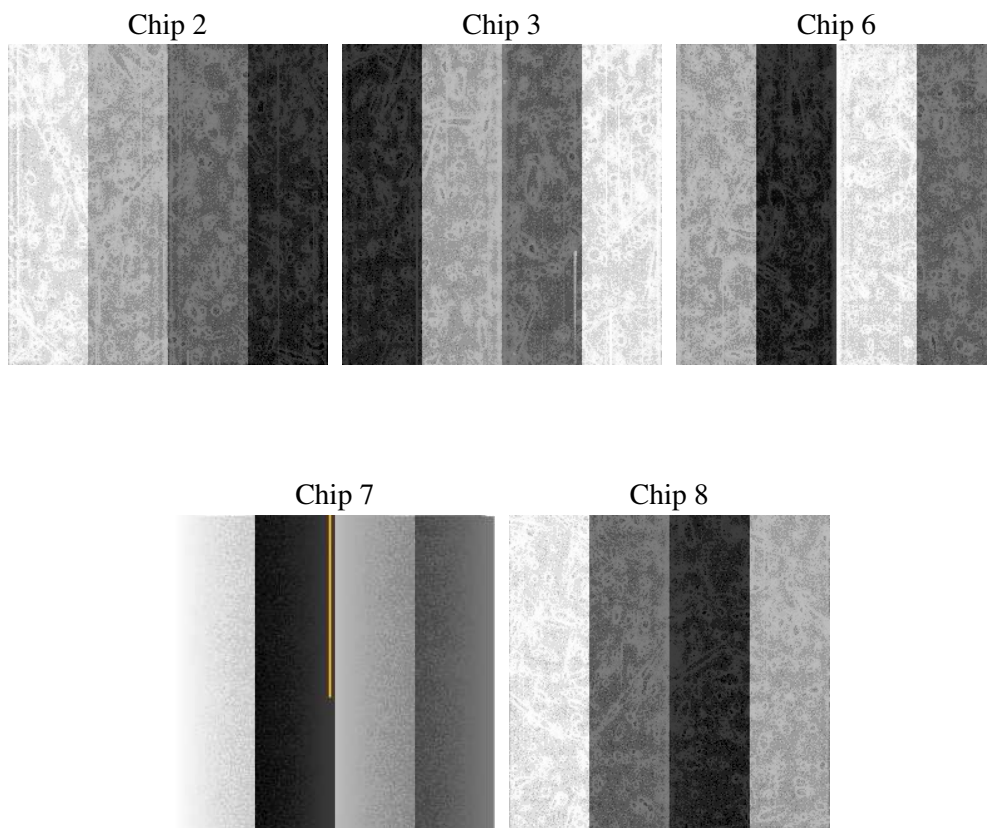
2 OBI

2.1 OBI

2.1.1 Images



2.1.2 Bias



2.1.3 Parameters

obi_num	1
ascdsver	7.6.9
caldbver	3.2.3
date	2006-09-30T05:12:00
revision	2

sched_exp_time	5000.000000
ontime	5110.4205408096
ontime2	5110.4205408096
ontime3	5110.4205408096
ontime6	5110.4205408096
ontime7	5110.4205408096
ontime8	5110.4205408096
l1events	188724

2.1.4 Events

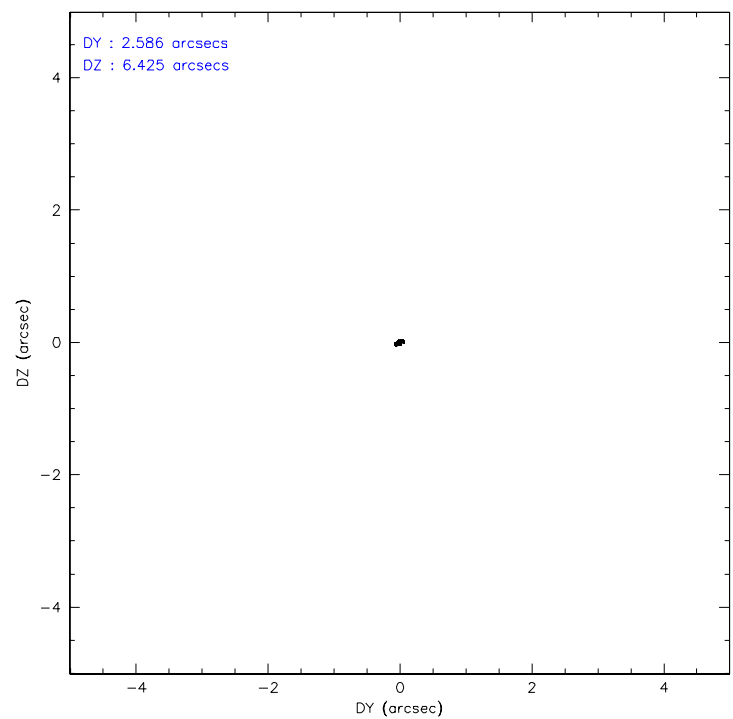
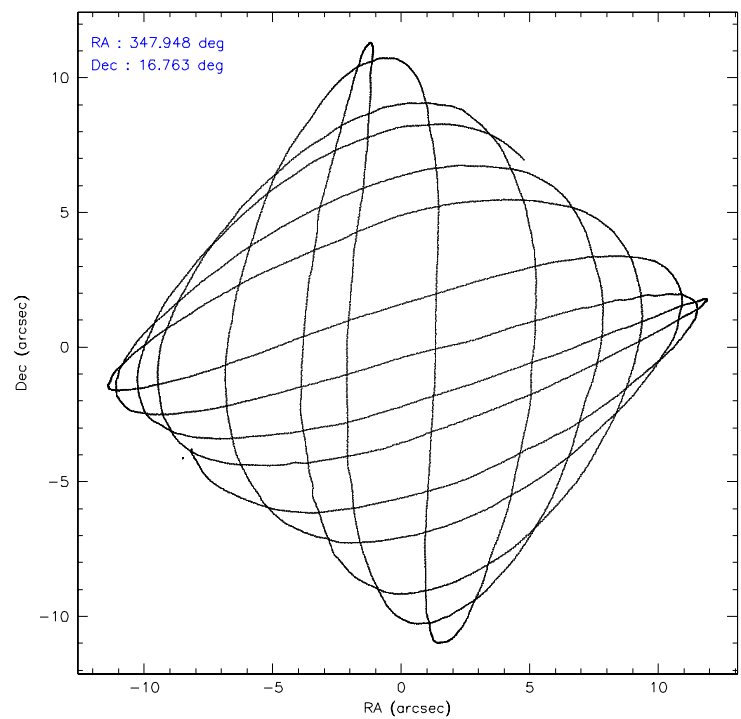
	ccd 2	ccd 3	ccd 6	ccd 7	ccd 8
level 1 events	32492	33020	33919	43946	45347
rejected events	28086	28777	29506	27026	33976
rejected %	86%	87%	86%	61%	74%

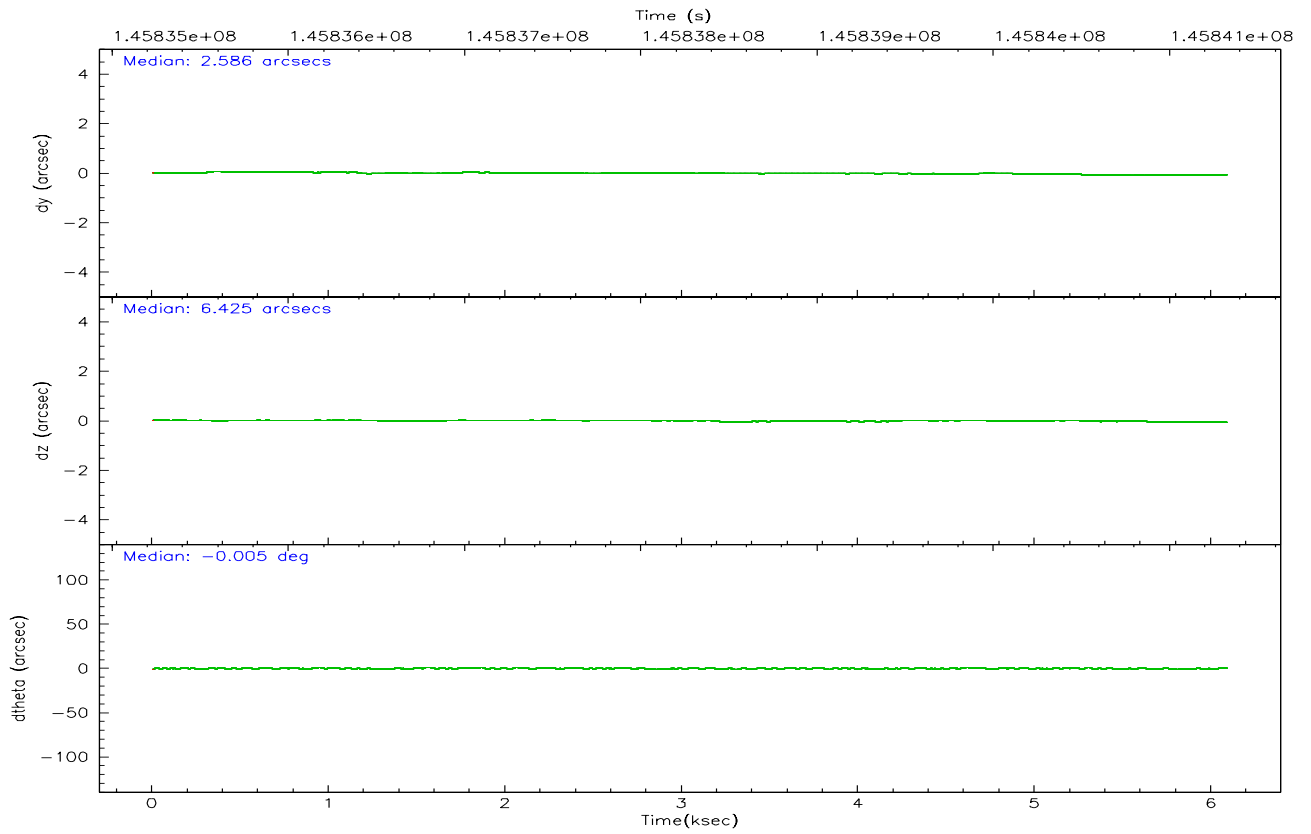
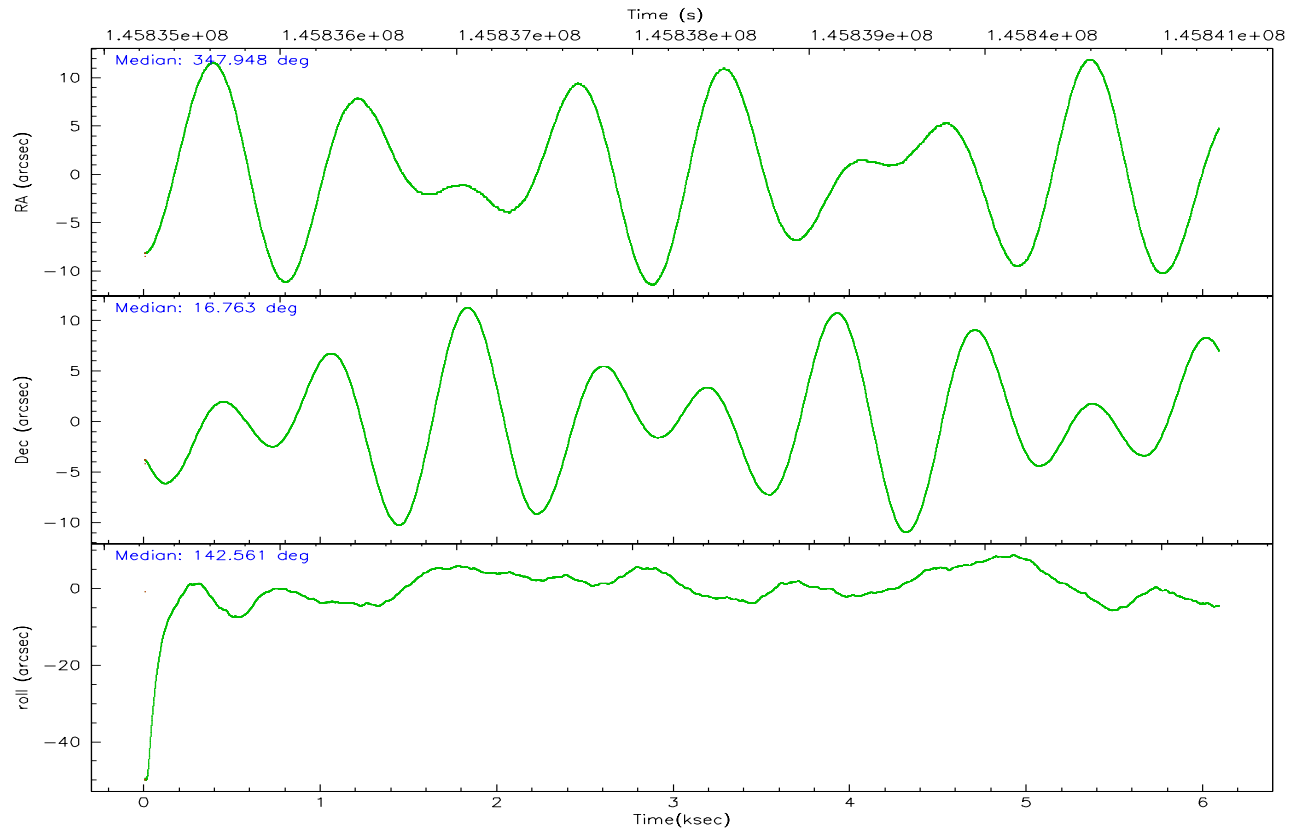
	ccd 2	ccd 3	ccd 6	ccd 7	ccd 8
grade 0 events	2032	1837	1748	1102	3996
	6%	5%	5%	2%	8%
grade 1 events	15	23	13	26	31
	0%	0%	0%	0%	0%
grade 2 events	881	908	1011	4184	2144
	2%	2%	2%	9%	4%
grade 3 events	361	379	419	905	1529
	1%	1%	1%	2%	3%
grade 4 events	407	361	369	857	1391
	1%	1%	1%	1%	3%
grade 5 events	1254	1330	1453	2878	1943
	3%	4%	4%	6%	4%
grade 6 events	729	766	872	9897	2315
	2%	2%	2%	22%	5%
grade 7 events	26813	27416	28034	24097	31998
	82%	83%	82%	54%	70%

2.2 Compared Parameters

Parameter	Planned	Actual	Parameter	Planned	Actual
Instrument	ACIS	ACIS	Obspar format version number	6	6
Detector	ACIS-23678	ACIS-23678	Obspar file type	PREDICTED	ACTUAL
Grating	NONE	NONE	Obspar update status	NONE	UPDATED
Data mode	FAINT	FAINT	Number of optional ACIS chips dropped	0	0
Observation mode	POINTING	POINTING	On-chip summing requested	N	N
Pointing RA	347.975943	347.9476516558577	Subarray requested	NONE	NONE
Pointing Dec	16.759951	16.76310690656644	Alternating exposures requested	N	N
Pointing Roll	142.394986	142.5596915843203	Primary exposure time	0.000000	3.1
SIM focus pos (mm)	-0.684267	-0.6828225247311905			
SIM defocus (mm)	0	0.001444936568705701			
SIM translation stage pos (mm)	-190.132523	-190.1400660498719			
SIM translation stage offset (mm)	0	0.00754346686406393			
Observation start time	145836327.184000	145834921.4845			
Observation start date	2002-08-15T22:04:23	2002-08-15T21:42:01			
Observation end time	145841327.184000	145842107.7598			
Observation end date	2002-08-15T23:27:43	2002-08-15T23:41:47			
Read mode	TIMED	TIMED			

2.3 Aspect



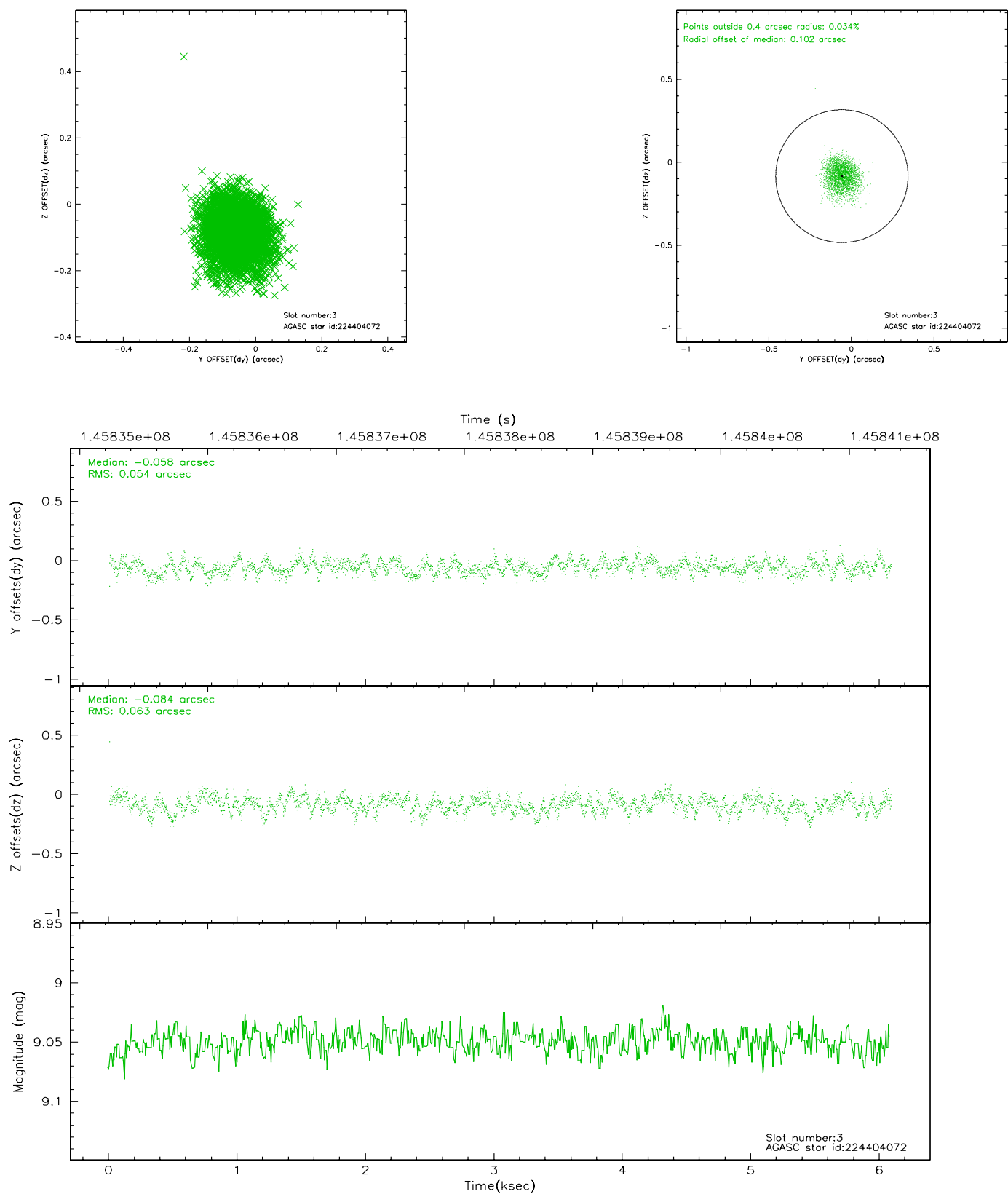


Slot Statistics

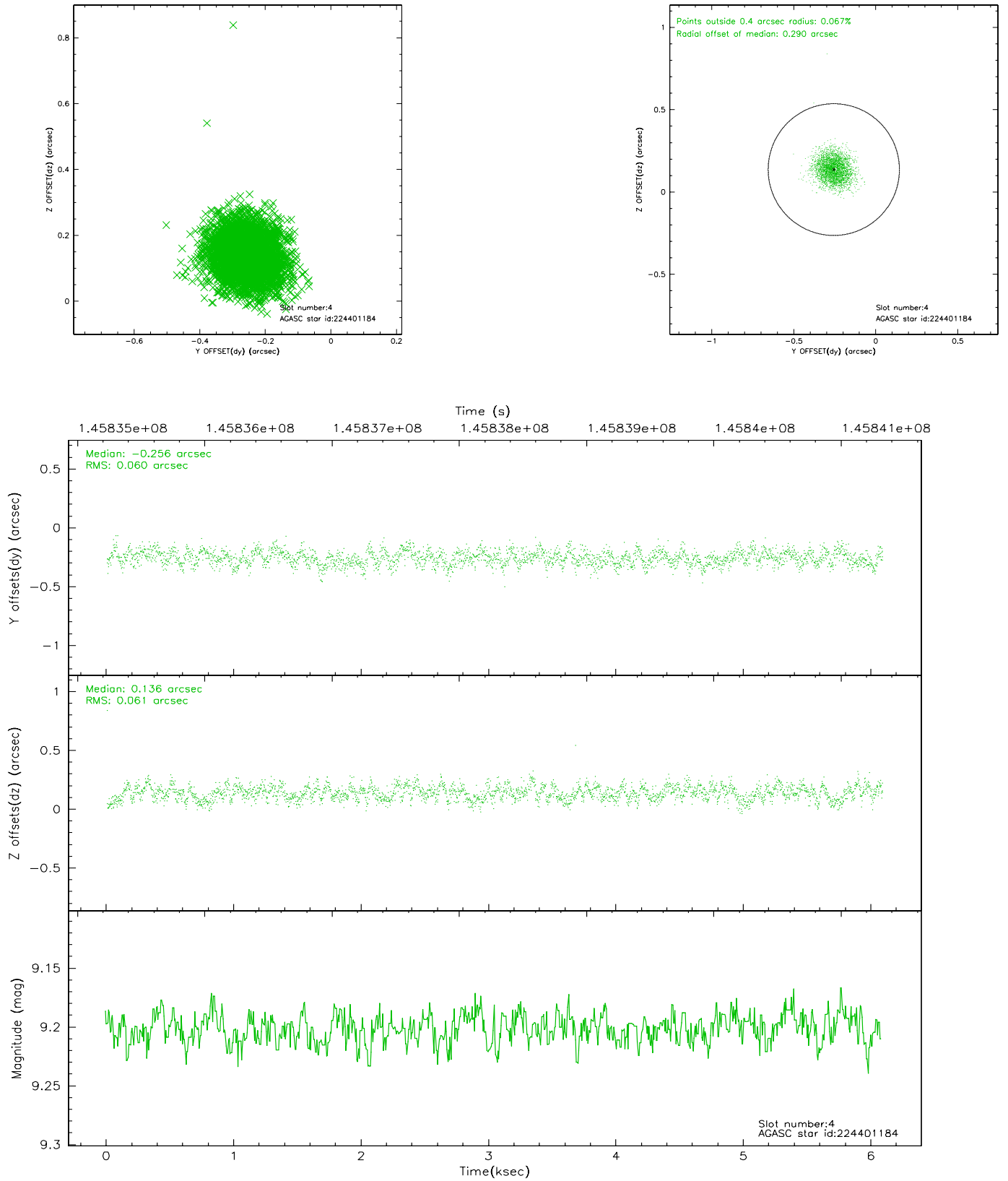
slot	status	id	mag	n_pts	med_dy	med_dz	dr1	dr2	ra	dec	mean_y	mean_z
0	FID	ACIS-S-2	7.11	1485	-0.018	0.037	0.006	0.010	0.000000	0.000000	-755.21	-1727.55
1	FID	ACIS-S-4	7.20	1485	-0.065	-0.001	0.005	0.008	0.000000	0.000000	2157.56	179.93
2	FID	ACIS-S-5	7.24	1485	0.052	-0.027	0.006	0.010	0.000000	0.000000	-1806.75	174.63
3	GUIDE	224404072	9.05	2966	-0.058	-0.084	0.089	0.138	347.543178	16.533642	687.93	1555.95
4	GUIDE	224401184	9.20	2966	-0.256	0.136	0.092	0.142	347.545229	17.266087	2286.76	-540.23
5	GUIDE	224403944	9.22	2967	0.123	0.140	0.067	0.112	348.537526	16.550854	-1991.23	-587.97
6	GUIDE	224404344	9.21	2970	0.008	-0.116	0.073	0.124	347.736702	16.806286	755.47	370.72
7	GUIDE	224399224	9.27	2969	0.180	-0.070	0.077	0.124	348.396087	16.343325	-2063.14	301.86

2.4 Star Slots

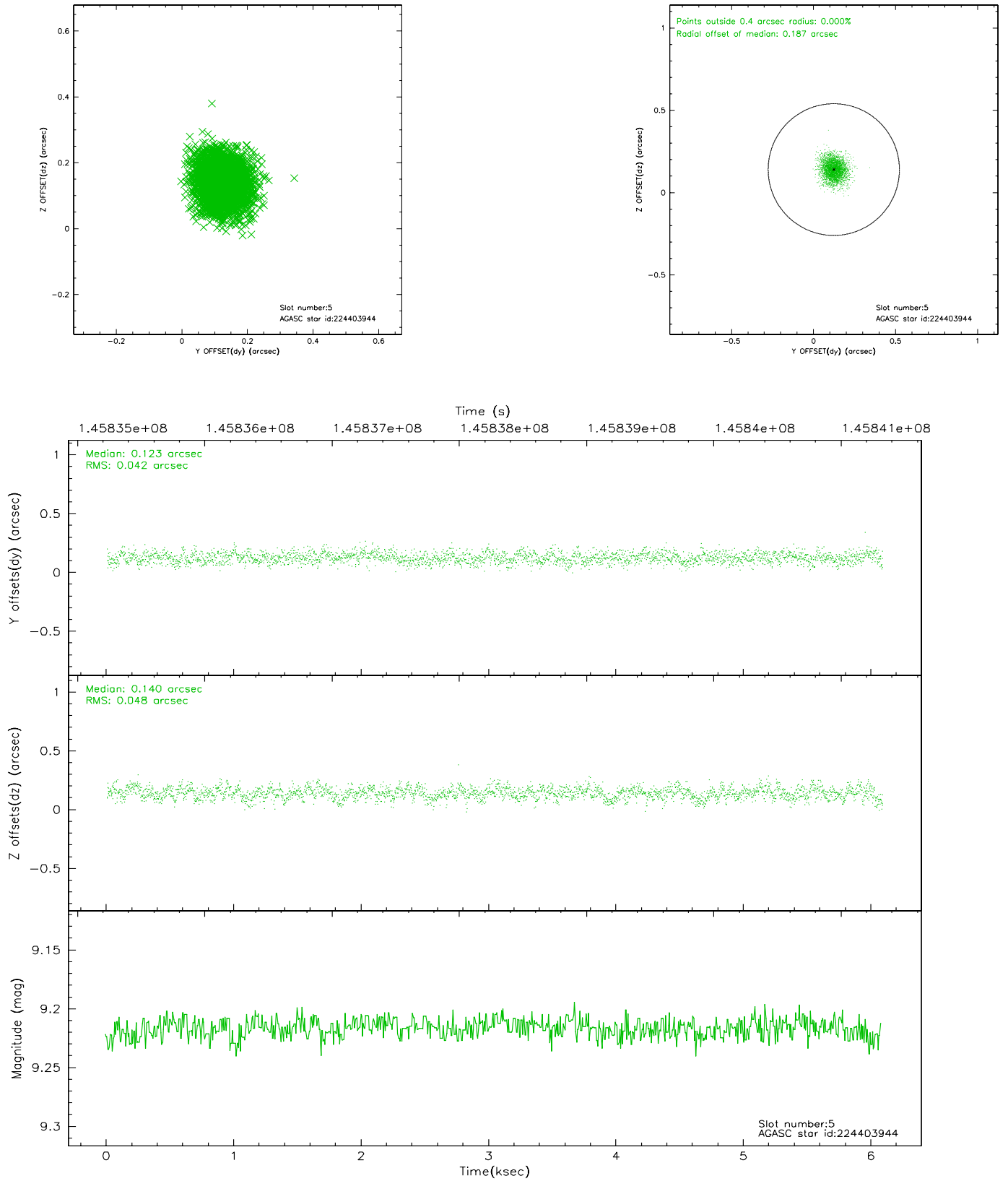
2.4.1 Slot 3



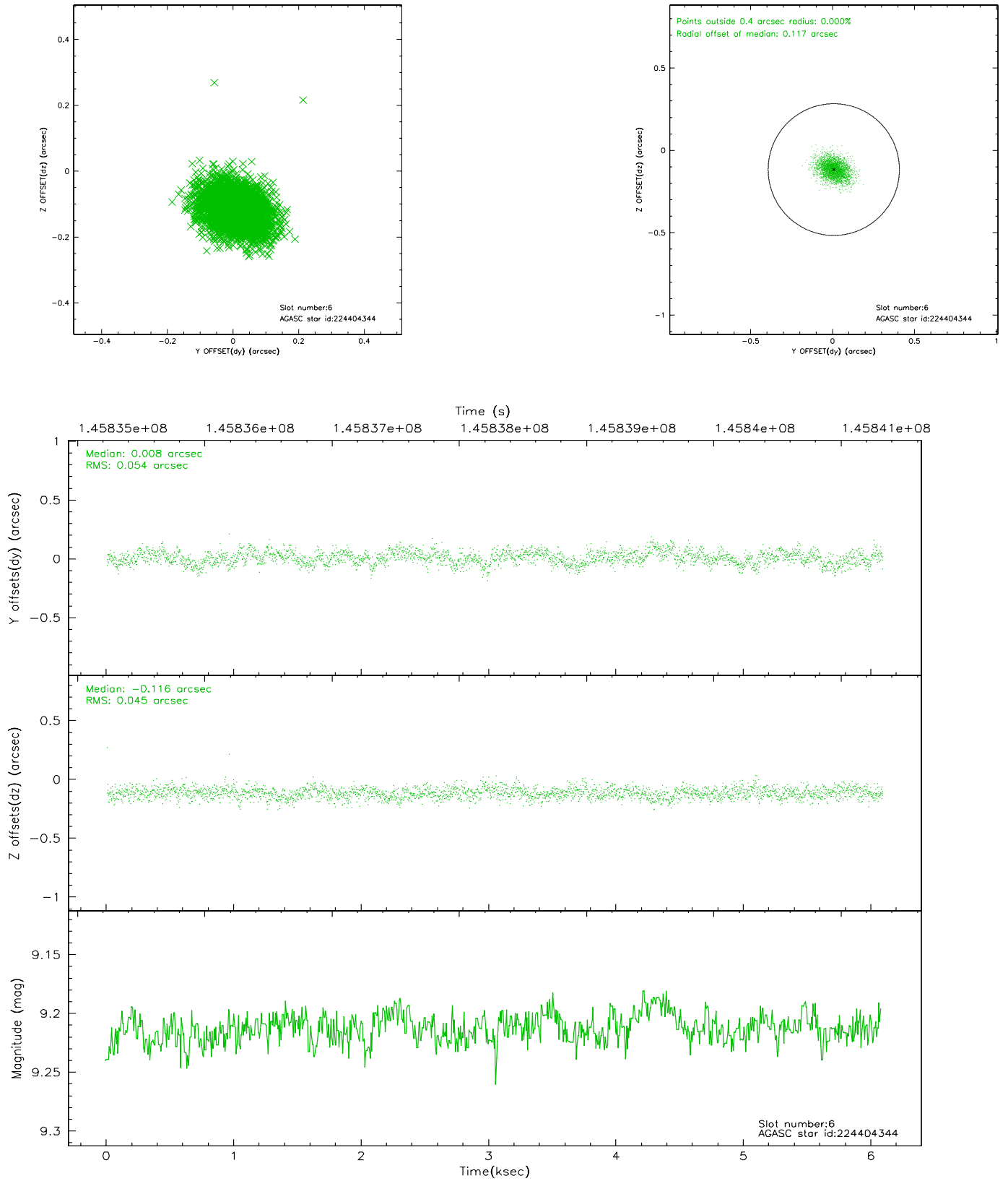
2.4.2 Slot 4



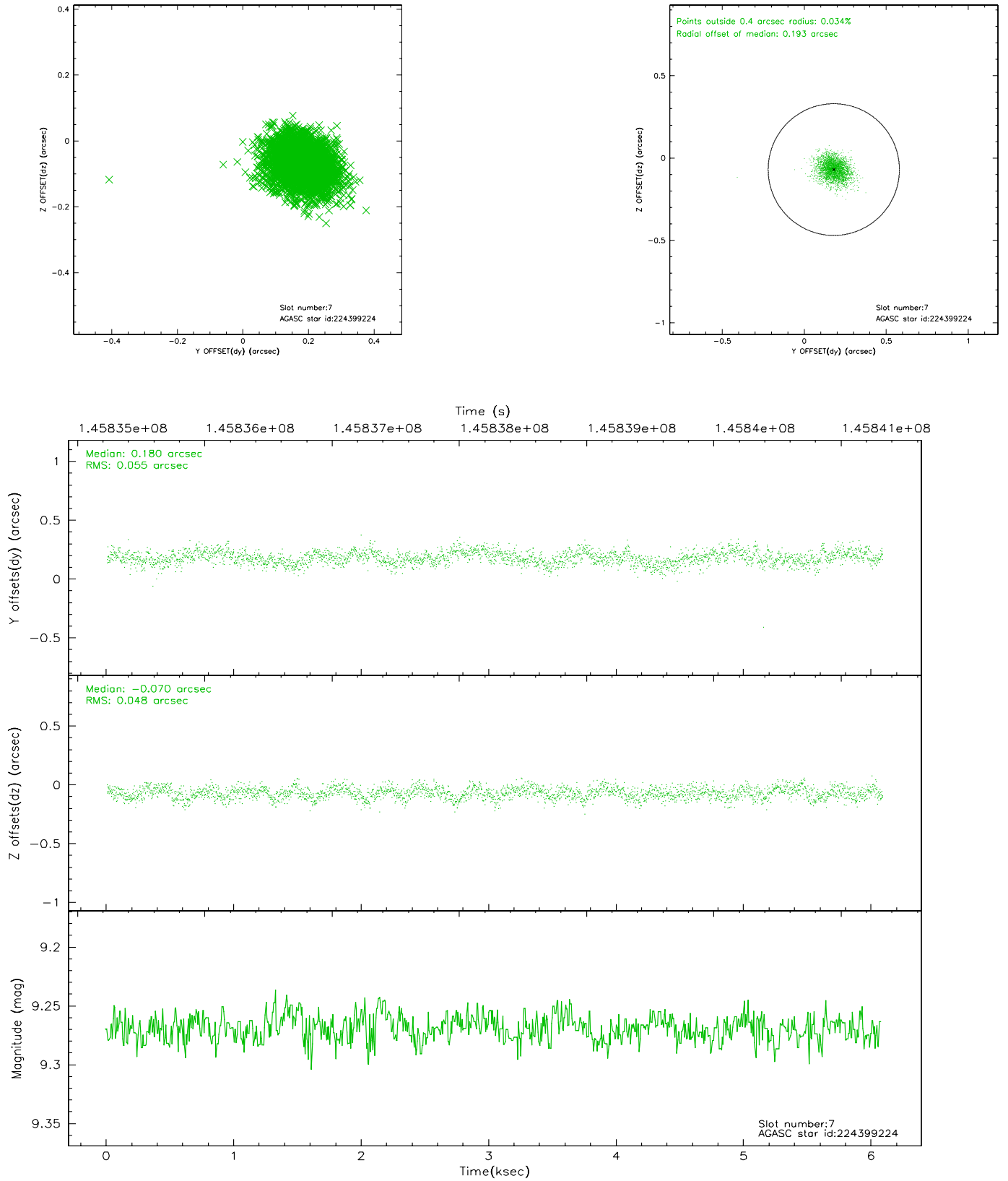
2.4.3 Slot 5



2.4.4 Slot 6

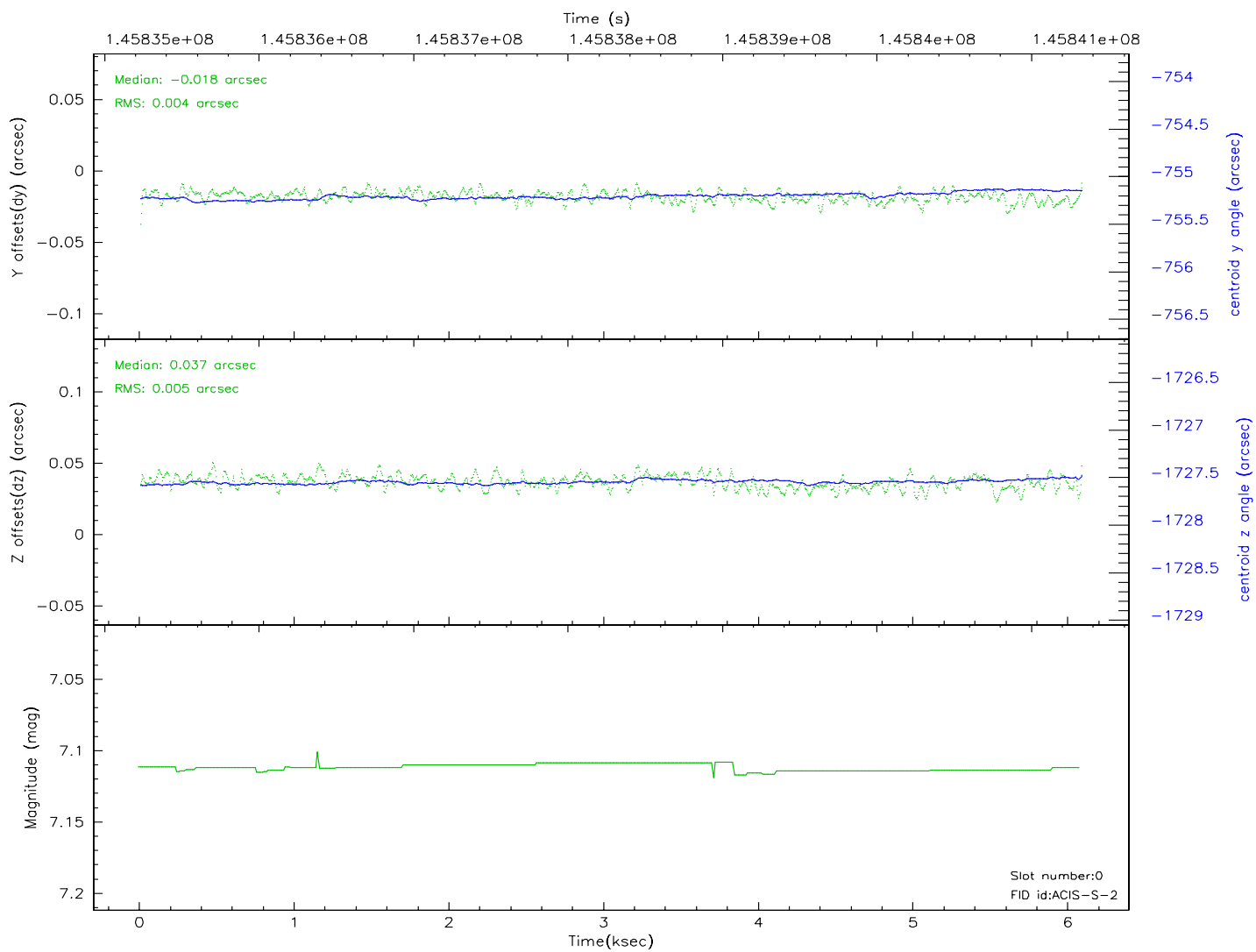
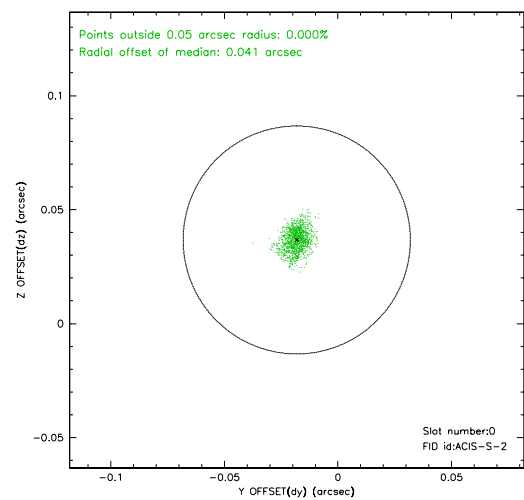
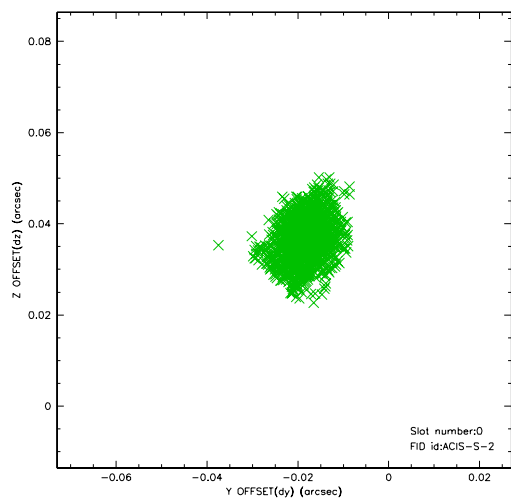


2.4.5 Slot 7

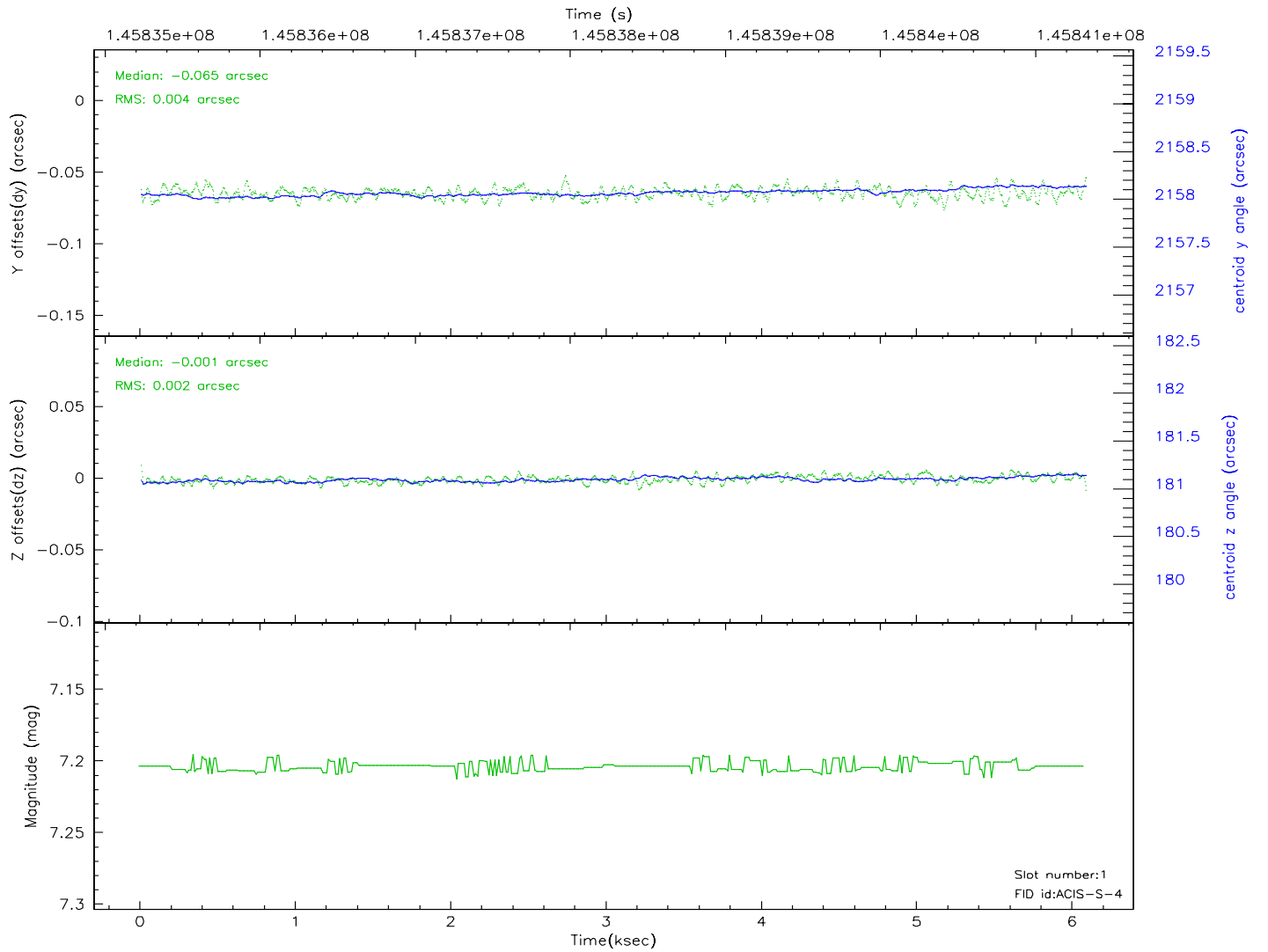
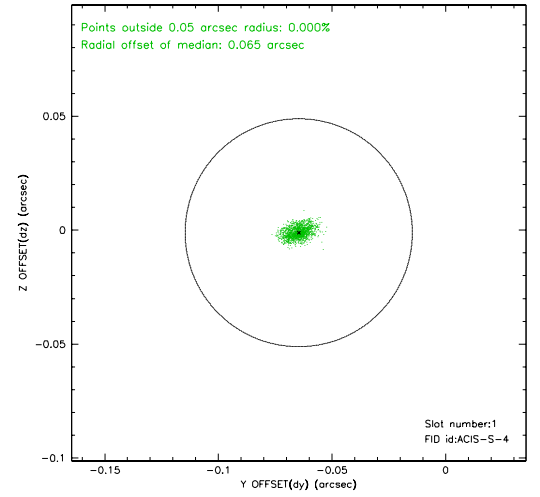
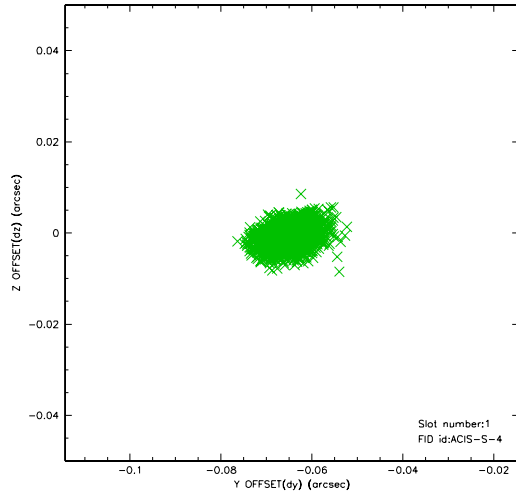


2.5 FID Slots

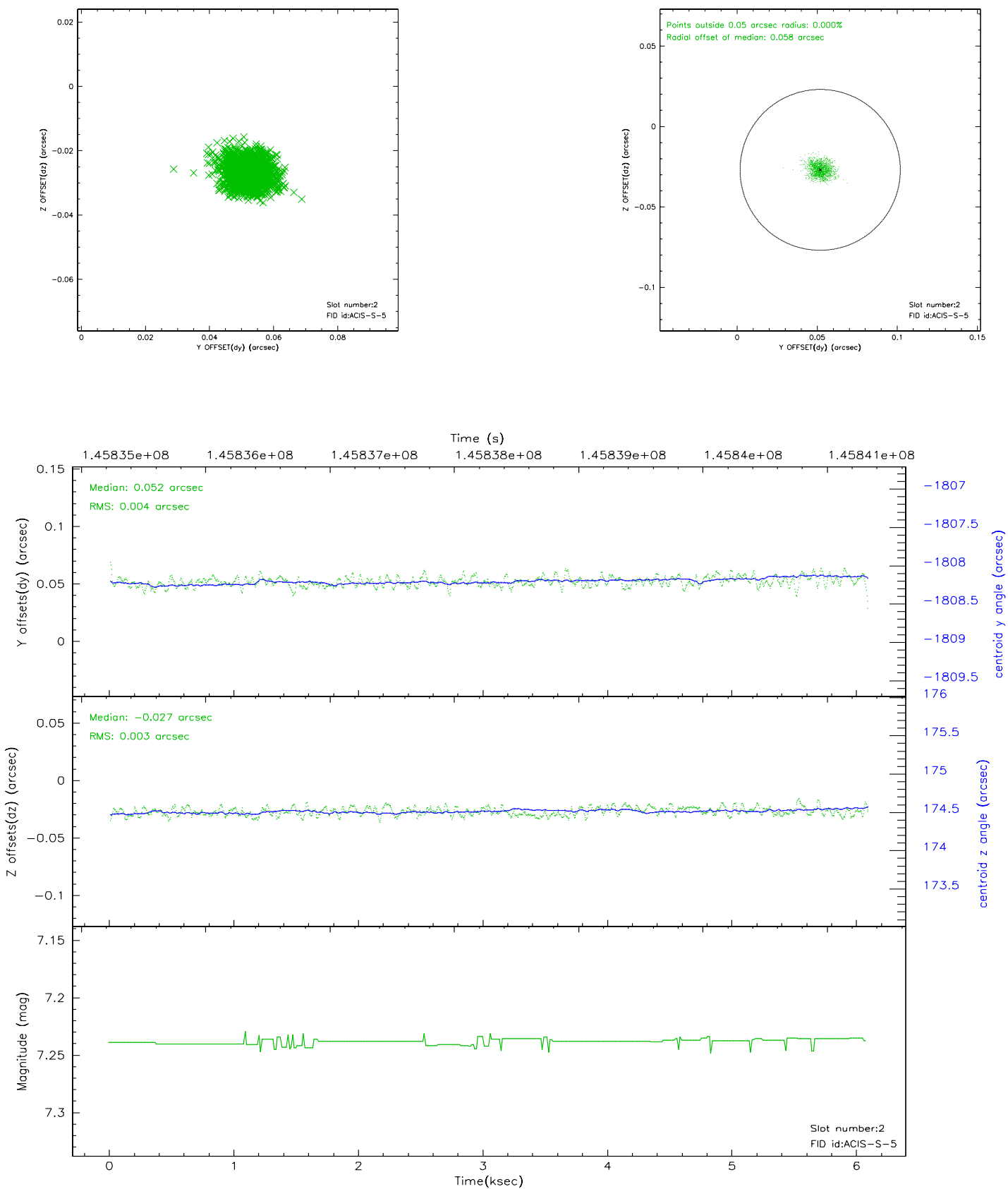
2.5.1 Slot 0



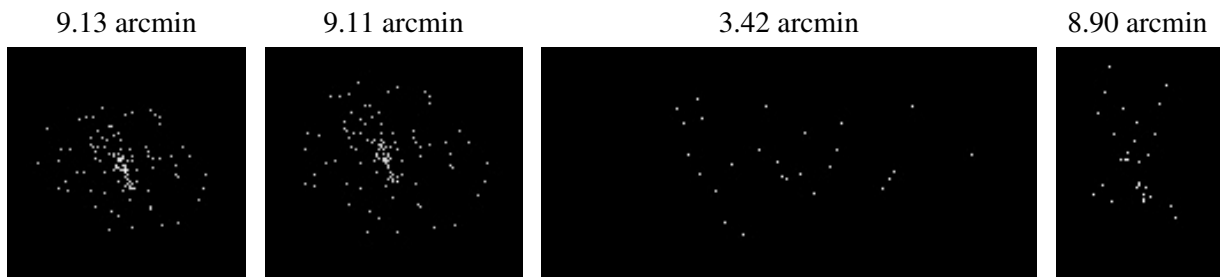
2.5.2 Slot 1



2.5.3 Slot 2



3 Point Sources



A Summary

A.1 Status

V&V Scientist	Jen Lauer
V&V Date (YYYY-MM-DD)	2006.10.02
V&V Edition	1
V&V Disposition and Status	OK
V&V Charge Time	5.108

A.2 Comments