

# V&V Reference Report

## L2 ASCDS Version : 7.6.9

Observation 3392 - L2 Version 001  
Chandra X-Ray Center

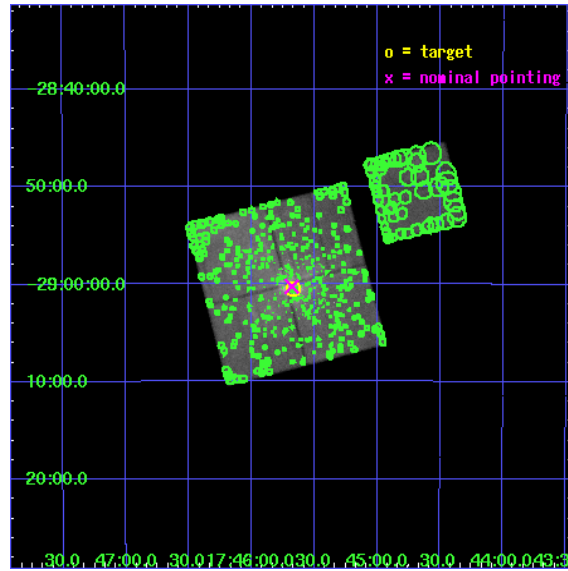
L2 Processing Date : Sep 18 2006

## Contents

<b>1</b>	<b>Front</b>	<b>2</b>
<b>2</b>	<b>OBI</b>	<b>3</b>
2.1	OBI . . . . .	3
2.1.1	Images . . . . .	3
2.1.2	Bias . . . . .	3
2.1.3	Parameters . . . . .	4
2.1.4	Events . . . . .	4
2.2	Compared Parameters . . . . .	5
2.3	Aspect . . . . .	6
2.4	Star Slots . . . . .	9
2.4.1	Slot 3 . . . . .	9
2.4.2	Slot 4 . . . . .	10
2.4.3	Slot 5 . . . . .	11
2.4.4	Slot 6 . . . . .	12
2.4.5	Slot 7 . . . . .	13
2.5	FID Slots . . . . .	14
2.5.1	Slot 0 . . . . .	14
2.5.2	Slot 1 . . . . .	15
2.5.3	Slot 2 . . . . .	16
<b>3</b>	<b>Point Sources</b>	<b>17</b>
<b>A</b>	<b>Summary</b>	<b>18</b>
A.1	Status . . . . .	18
A.2	Comments . . . . .	18

# 1 Front

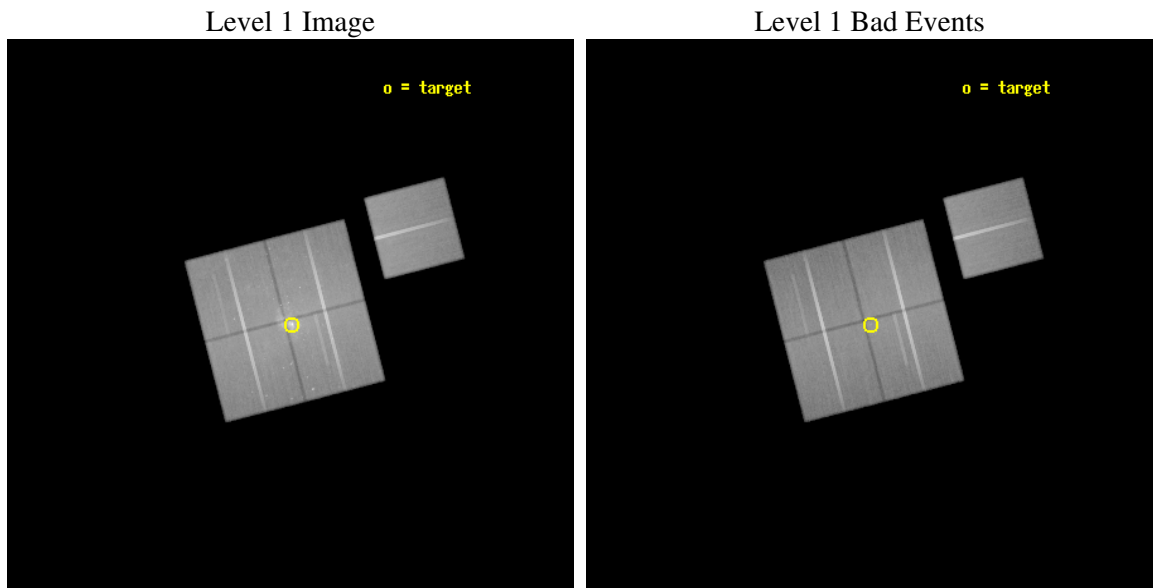
seq_num	600280
obs_id	3392
title	MONITORING THE EXTREME X-RAY FLARING OF SAGITTARIUS A* AND A DEEP SURVEY OF THE CENTRAL 40 PC OF THE GALAXY
observer	Dr. Frederick Baganoff
object	SGR A*
dtcycle	0
cycle	P
ra_targ	266.416667
dec_targ	-29.007778
ra_nom	266.4199206801
dec_nom	-29.004075642156
roll_nom	75.510265111081
revision	2
ontime	168897.21771482
livetime	166690.45122505
ontime0	168897.217675
ontime1	168890.93572456
ontime2	168894.07667479
ontime3	168897.21771482
ontime6	168903.49967524
l2events	1235946



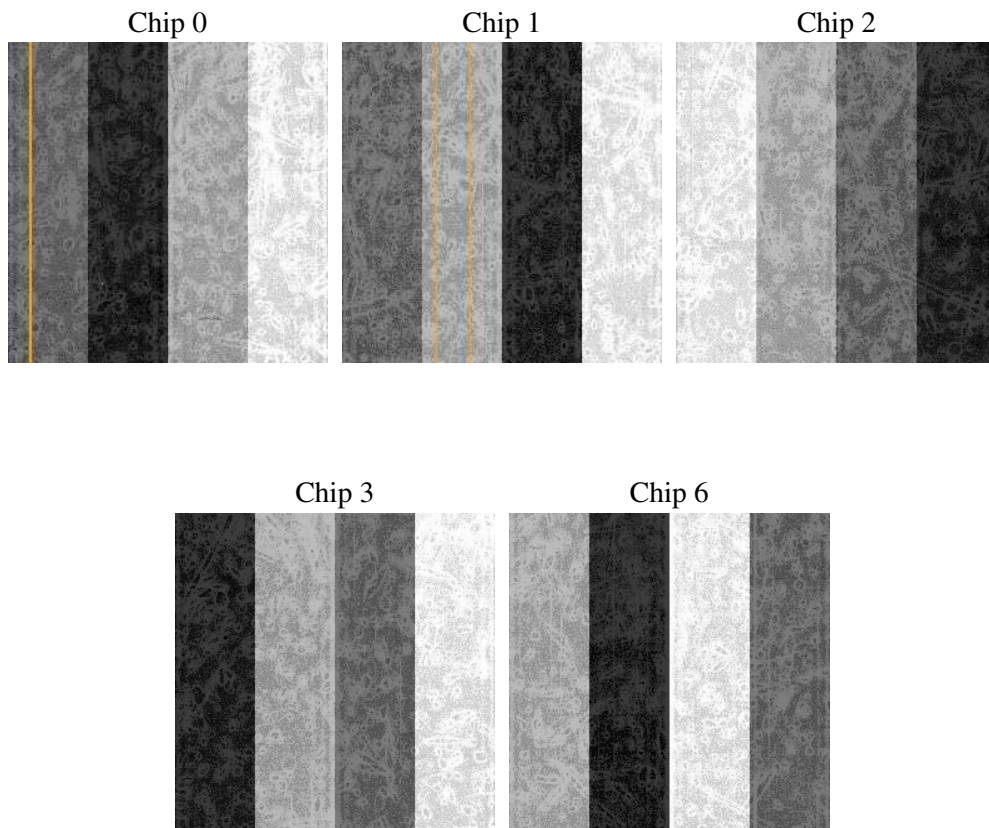
## 2 OBI

### 2.1 OBI

#### 2.1.1 Images



#### 2.1.2 Bias



### 2.1.3 Parameters

obi_num	1
ascdsver	7.6.9
caldbver	3.2.3
date	2006-09-18T04:58:09
revision	2

sched_exp_time	168783.029000
ontime	168901.40940109
ontime0	168901.40938118
ontime1	168895.12741083
ontime2	168898.26836106
ontime3	168901.40940109
ontime6	168907.69138142
l1events	5979087

### 2.1.4 Events

	ccd 0	ccd 1	ccd 2	ccd 3	ccd 6
level 1 events	1219804	1155868	1226568	1263052	1113795
rejected events	857907	878903	966731	953347	957145
rejected %	70%	76%	78%	75%	85%

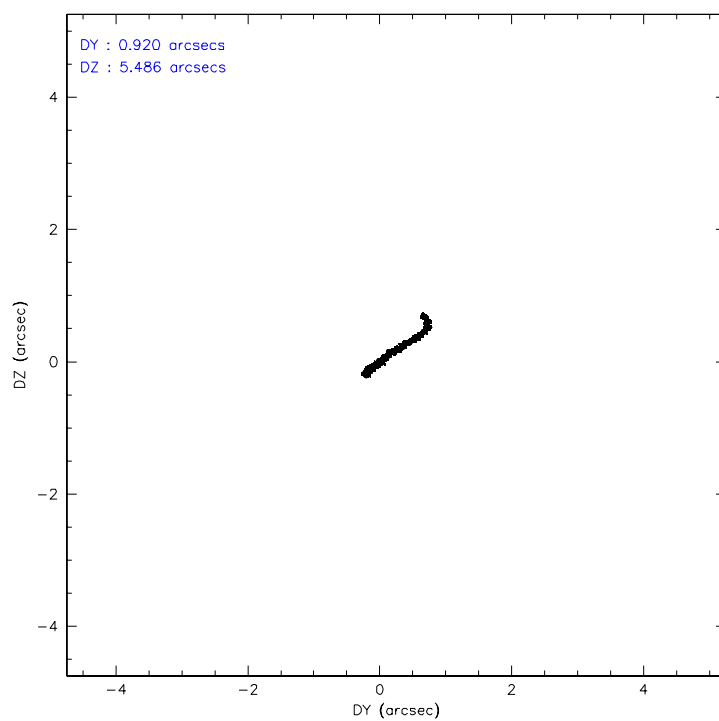
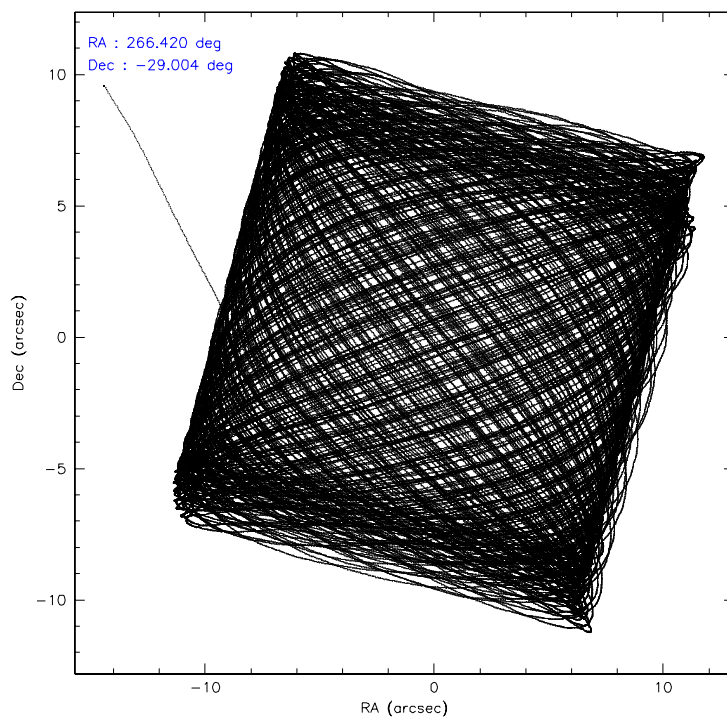
	ccd 0	ccd 1	ccd 2	ccd 3	ccd 6
grade 0 events	216973	153781	145825	180094	73399
	17%	13%	11%	14%	6%
grade 1 events	1255	932	909	1198	554
	0%	0%	0%	0%	0%
grade 2 events	60051	47770	46371	51821	29668
	4%	4%	3%	4%	2%
grade 3 events	23597	20044	17633	20641	13504
	1%	1%	1%	1%	1%
grade 4 events	22331	19961	17678	20488	13512
	1%	1%	1%	1%	1%
grade 5 events	41217	44430	38947	44077	46063
	3%	3%	3%	3%	4%
grade 6 events	38949	35415	32334	36667	26570
	3%	3%	2%	2%	2%
grade 7 events	815431	833535	926871	908066	910525
	66%	72%	75%	71%	81%

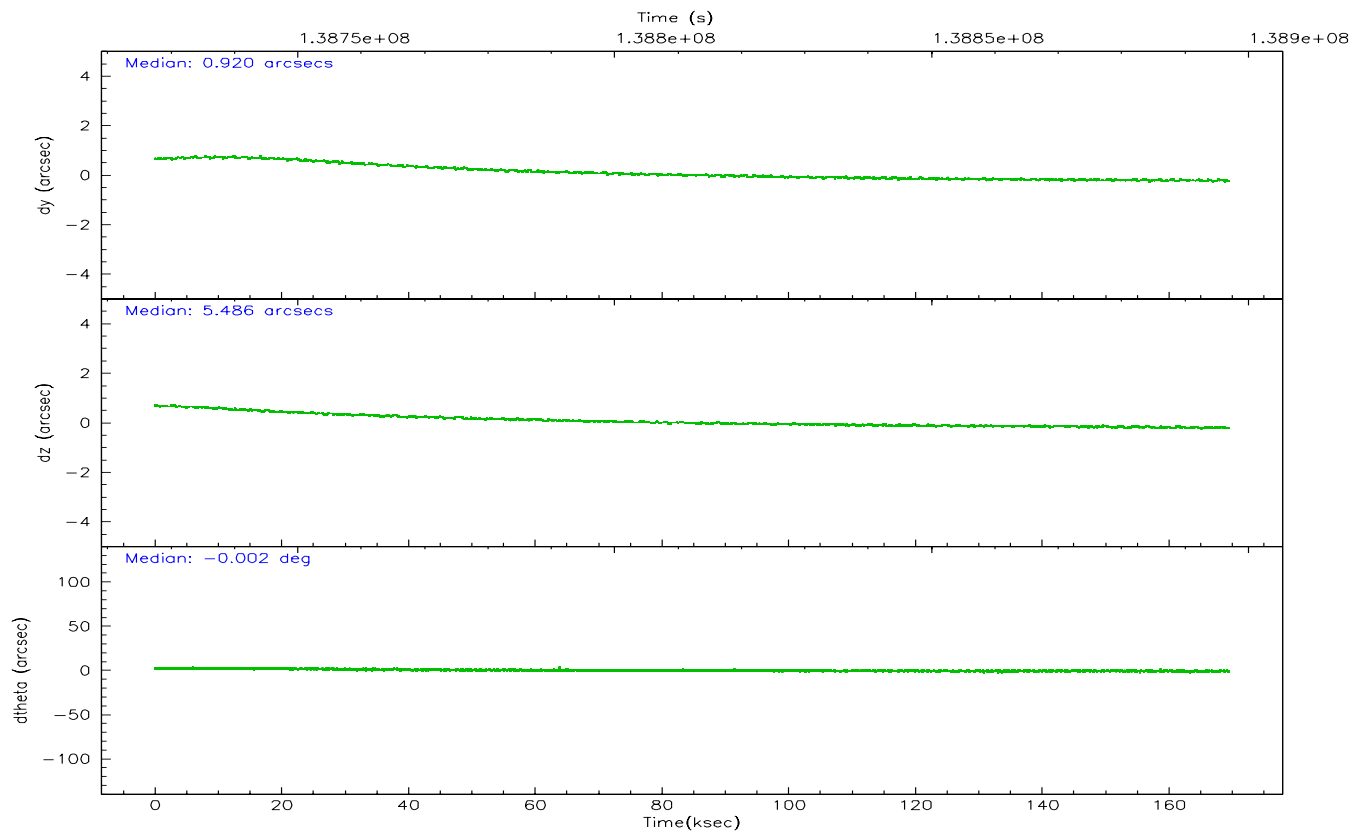
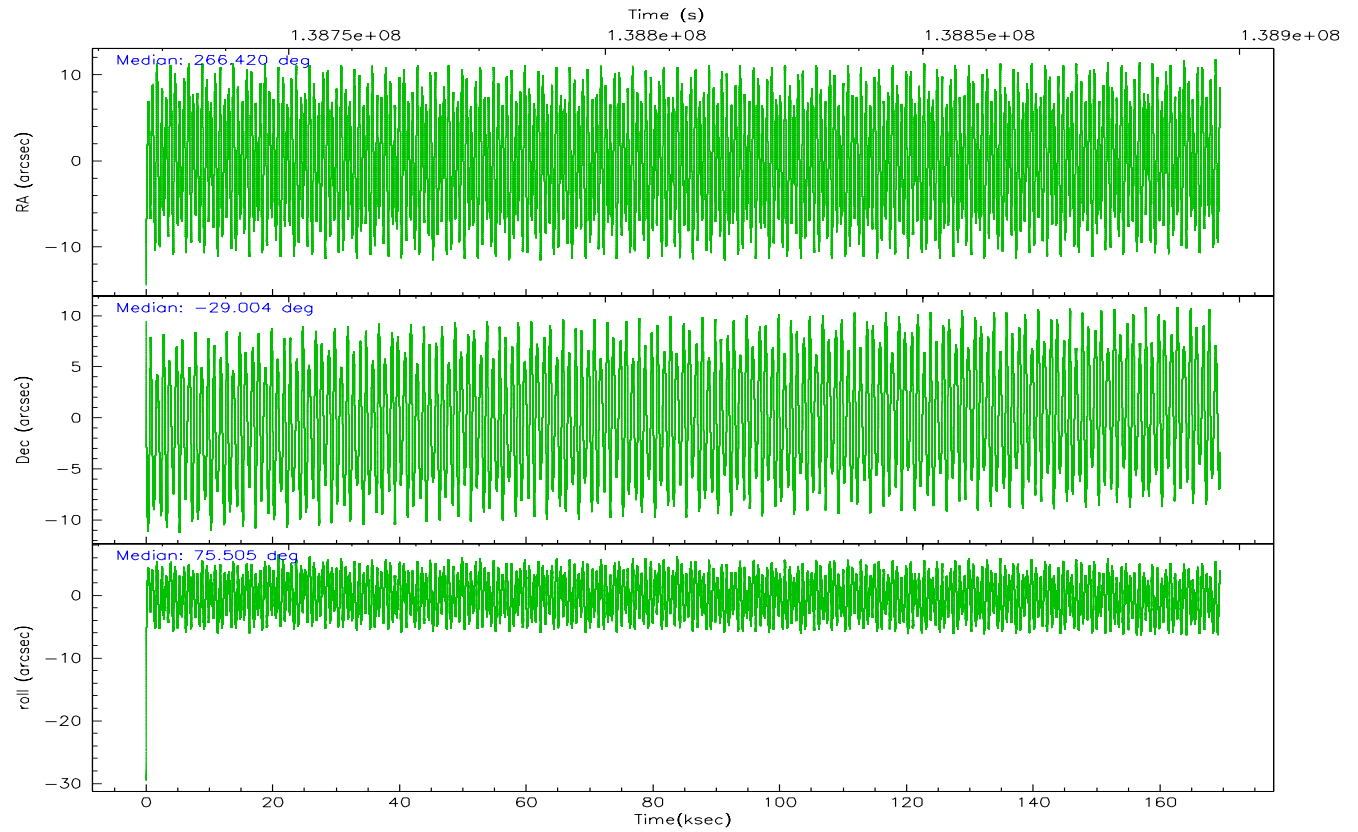


## 2.2 Compared Parameters

Parameter	Planned	Actual	Parameter	Planned	Actual
Instrument	ACIS	ACIS	Obspar format version number	6	6
Detector	ACIS-01236	ACIS-01236	Obspar file type	PREDICTED	ACTUAL
Grating	NONE	NONE	Obspar update status	NONE	UPDATED
Data mode	FAINT	FAINT	Number of optional ACIS chips dropped	0	0
Observation mode	POINTING	POINTING	On-chip summing requested	N	N
Pointing RA	266.428394	266.4199206800973	Subarray requested	NONE	NONE
Pointing Dec	-29.030450	-29.00407564215563	Alternating exposures requested	N	N
Pointing Roll	75.305690	75.51026511108108	Primary exposure time	0.000000	3.1
Window start time	138734224.184000	138734224.184000			
Window stop time	138890704.184000	138890704.184000			
SIM focus pos (mm)	-0.782348	-0.7809083437167272			
SIM defocus (mm)	0	0.001439871863259334			
SIM translation stage pos (mm)	-233.592463	-233.5874344608287			
SIM translation stage offset (mm)	0	-0.005018542100998502			
Observation start time	138728191.184000	138726963.36796			
Observation start date	2002-05-25T15:35:27	2002-05-25T15:16:03			
Observation end time	138896974.184000	138897289.16241			
Observation end date	2002-05-27T14:28:30	2002-05-27T14:34:49			
Read mode	TIMED	TIMED			

## 2.3 Aspect



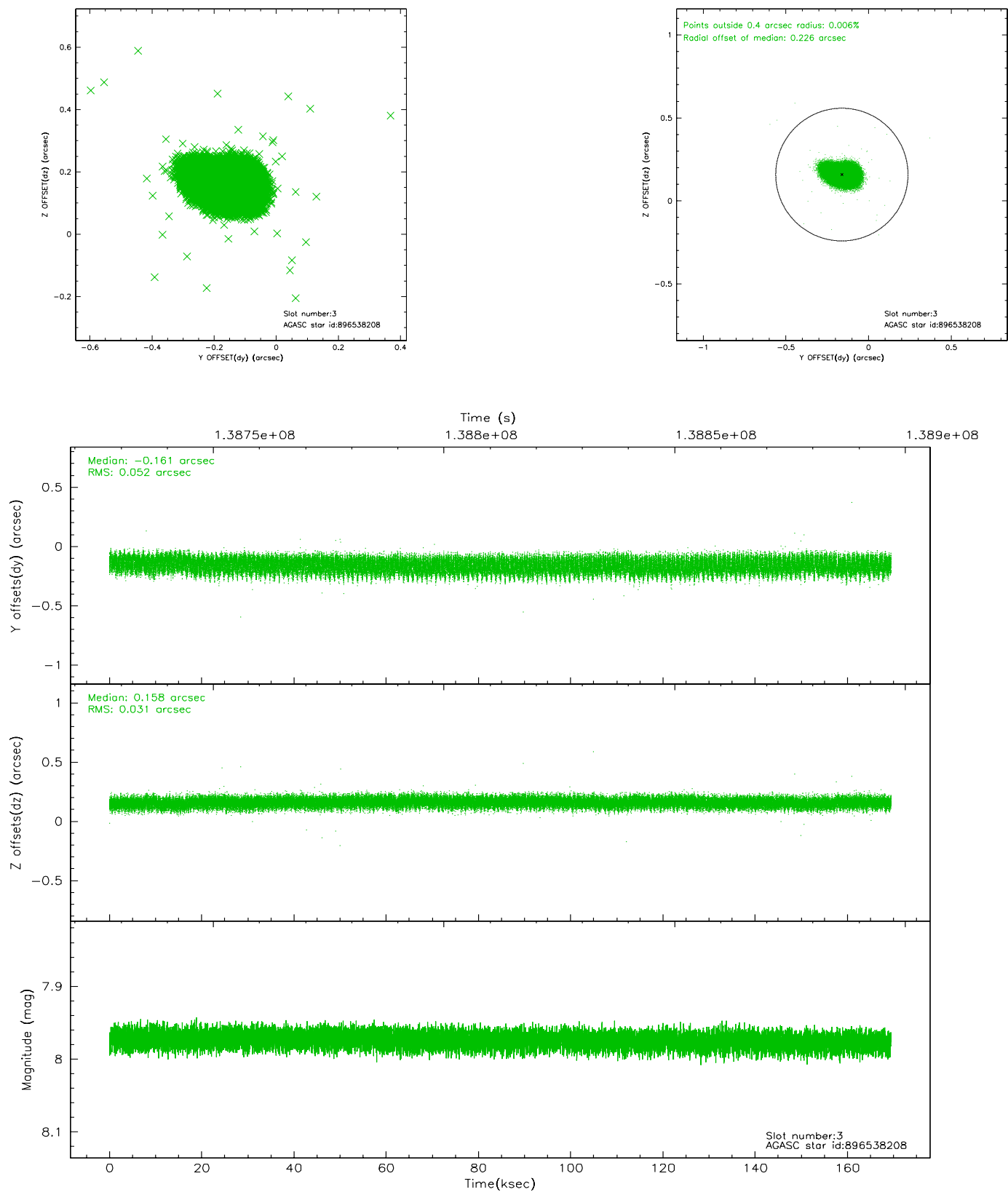


### Slot Statistics

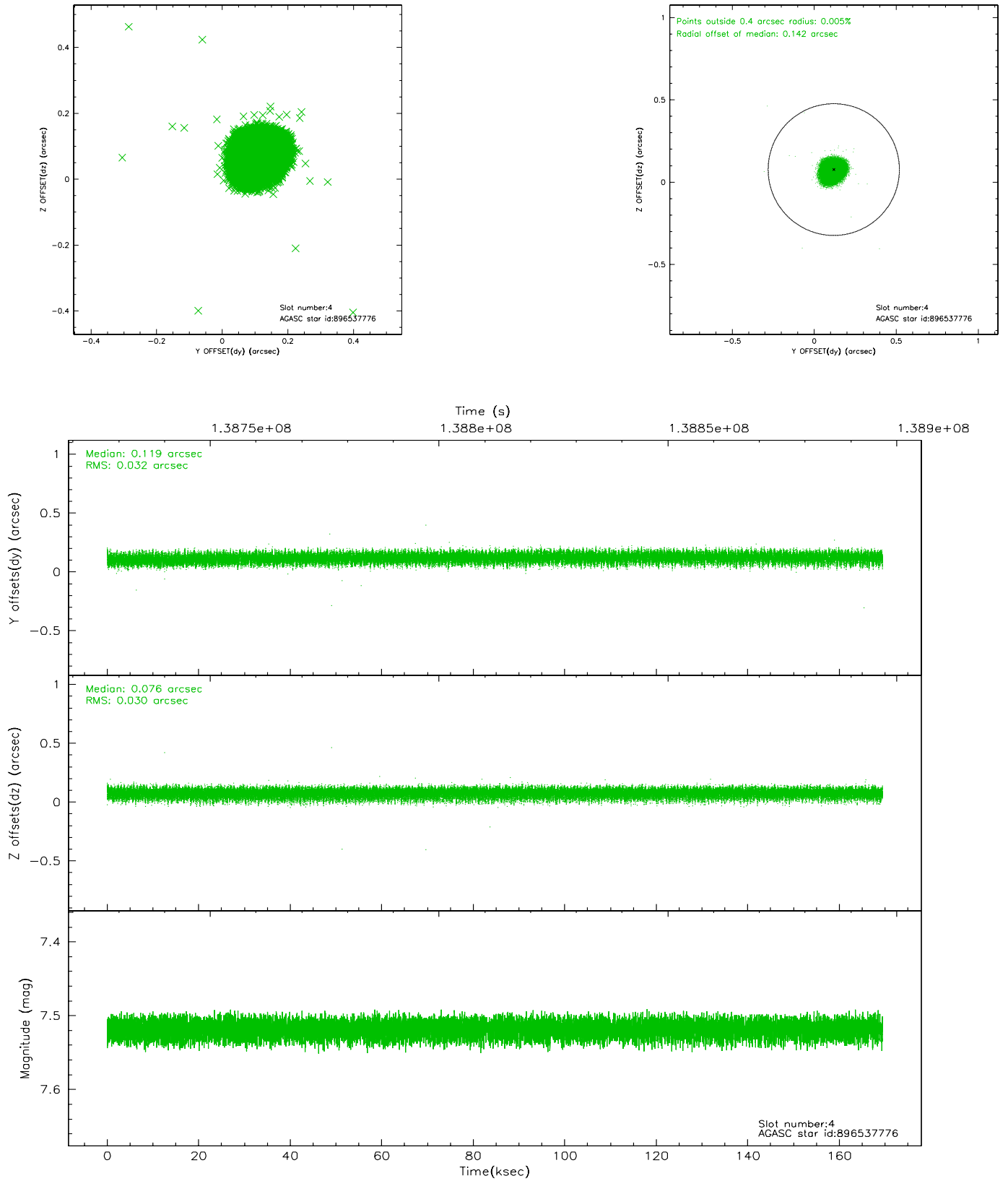
slot	status	id	mag	n_pts	med_dy	med_dz	dr1	dr2	ra	dec	mean_y	mean_z
0	FID	ACIS-I-1	7.25	41330	-0.044	0.055	0.012	0.022	0.000000	0.000000	938.77	-828.87
1	FID	ACIS-I-5	7.24	41333	-0.033	0.016	0.009	0.016	0.000000	0.000000	-1809.39	1068.65
2	FID	ACIS-I-6	7.26	41337	-0.013	0.000	0.013	0.023	0.000000	0.000000	404.48	1712.99
3	GUIDE	896538208	7.97	82670	-0.161	0.158	0.065	0.104	267.176969	-28.671626	1842.34	-1961.38
4	GUIDE	896537776	7.52	82679	0.119	0.076	0.046	0.075	266.655684	-29.665673	-2031.88	-1268.48
5	GUIDE	896541360	7.71	82659	0.086	0.035	0.049	0.080	266.684478	-29.453744	-1270.87	-1163.68
6	GUIDE	896403224	8.29	82662	0.163	-0.176	0.079	0.125	265.612825	-29.438915	-2079.49	2097.42
7	GUIDE	896534664	8.20	82664	-0.199	-0.088	0.064	0.107	266.405570	-28.407461	2151.02	638.63

## 2.4 Star Slots

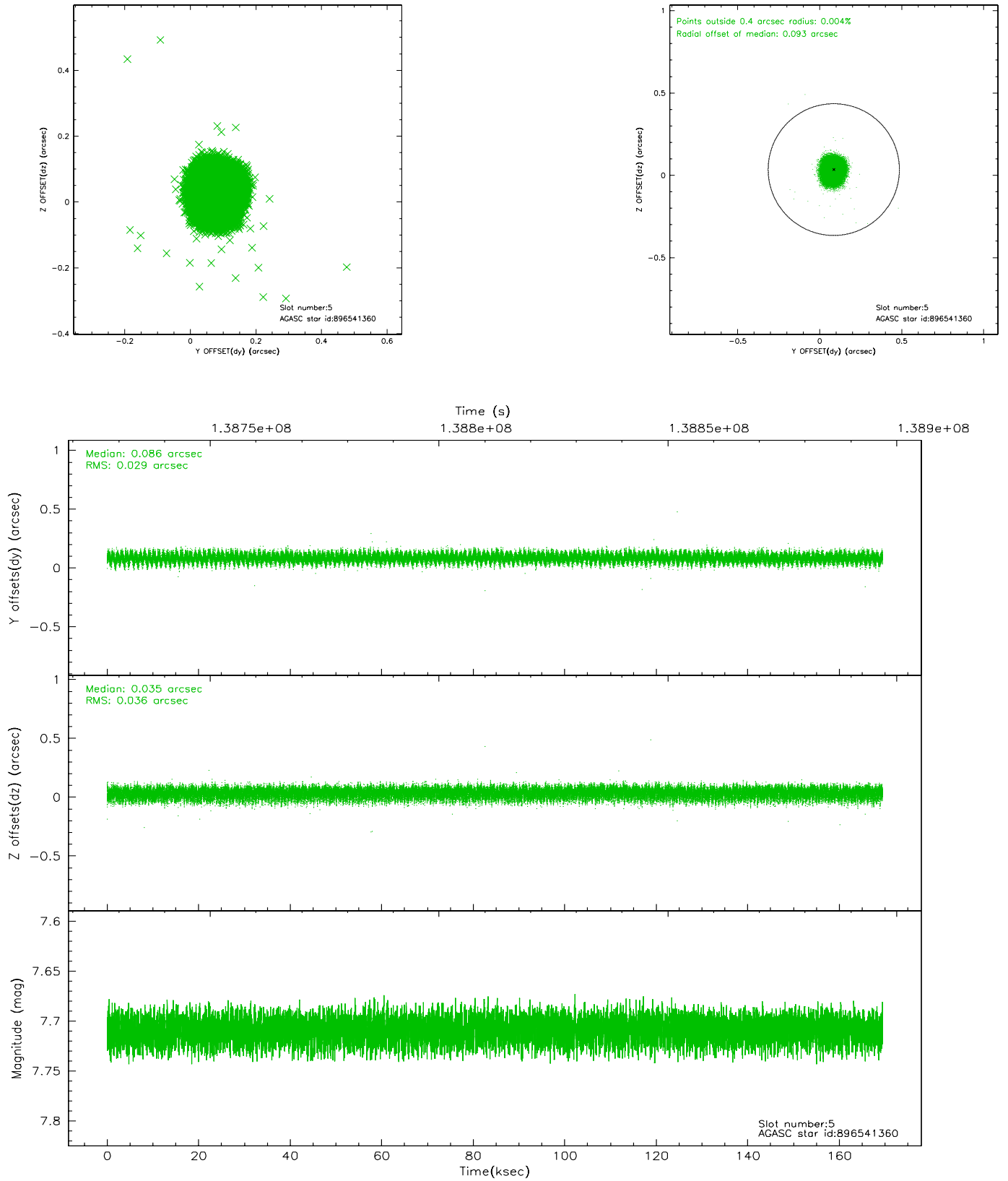
### 2.4.1 Slot 3



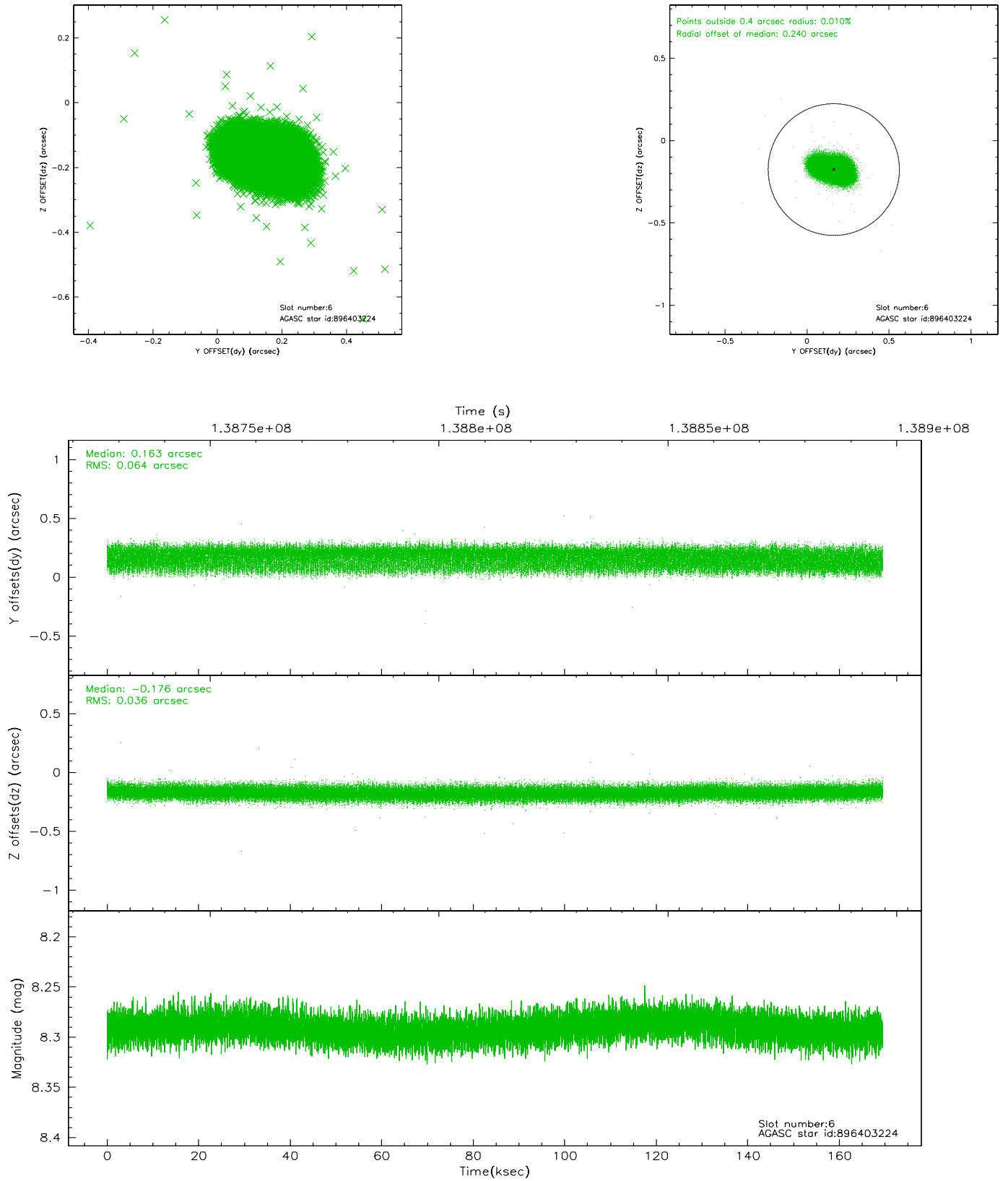
## 2.4.2 Slot 4



### 2.4.3 Slot 5

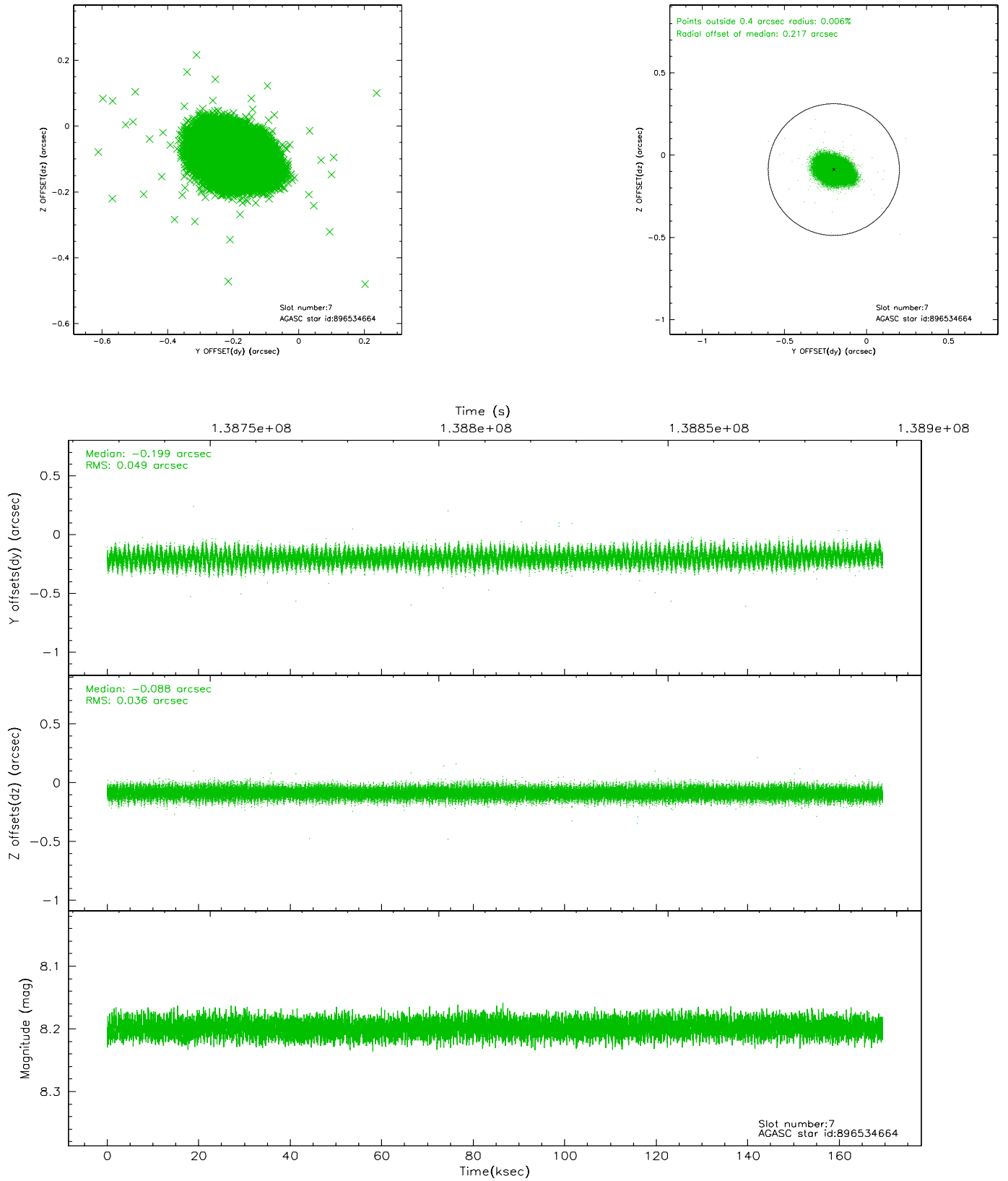


## 2.4.4 Slot 6



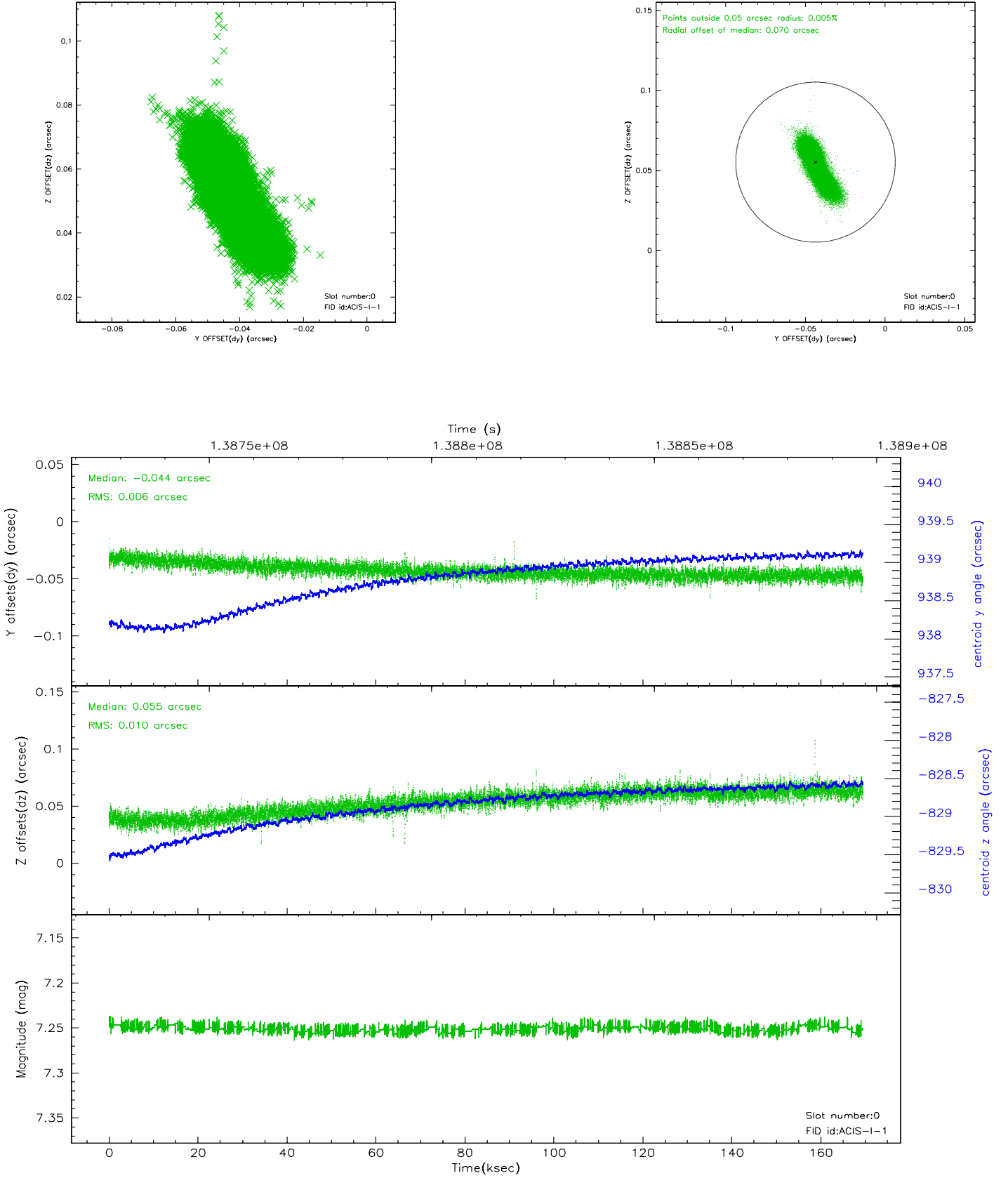


## 2.4.5 Slot 7

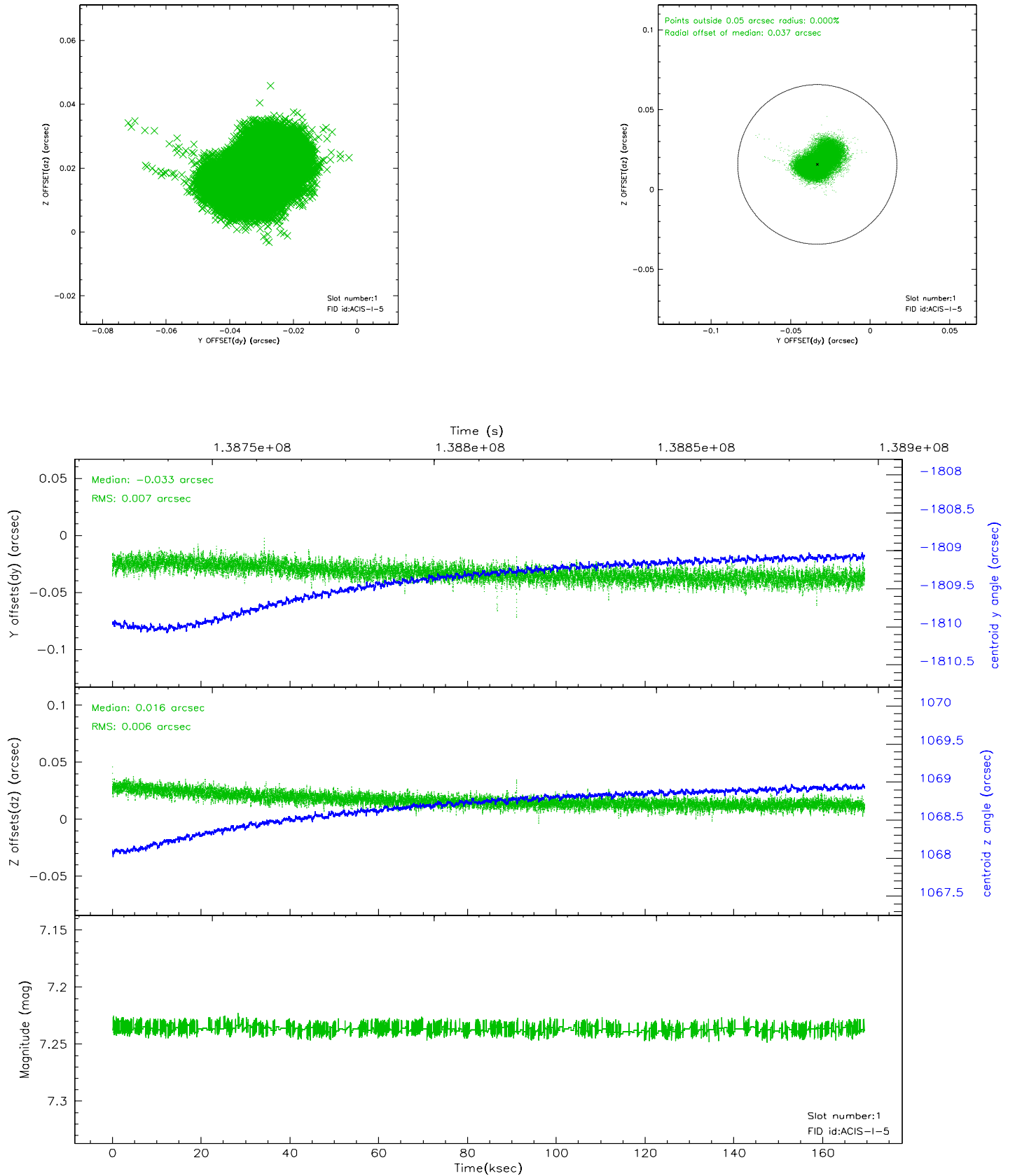


## 2.5 FID Slots

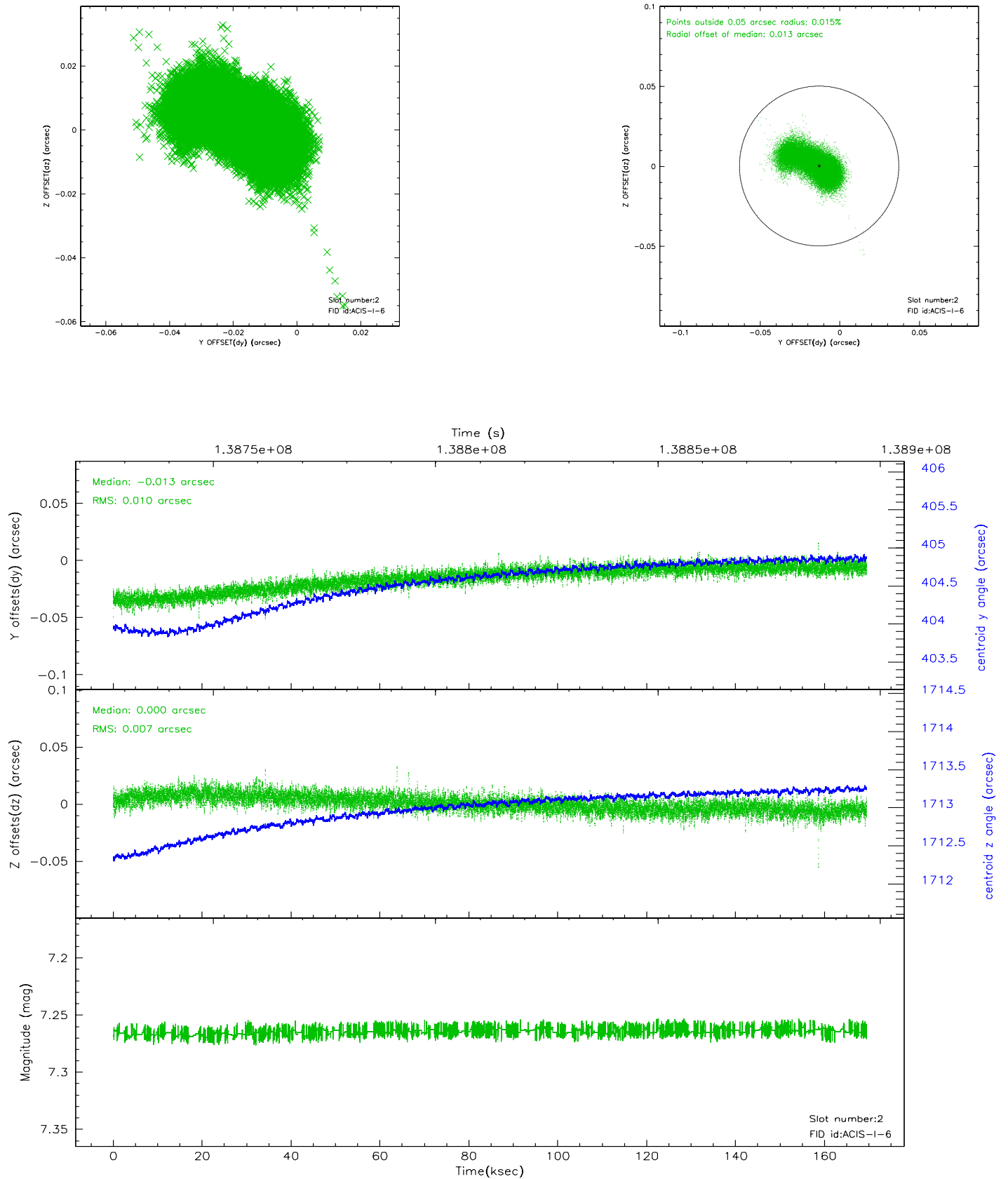
### 2.5.1 Slot 0



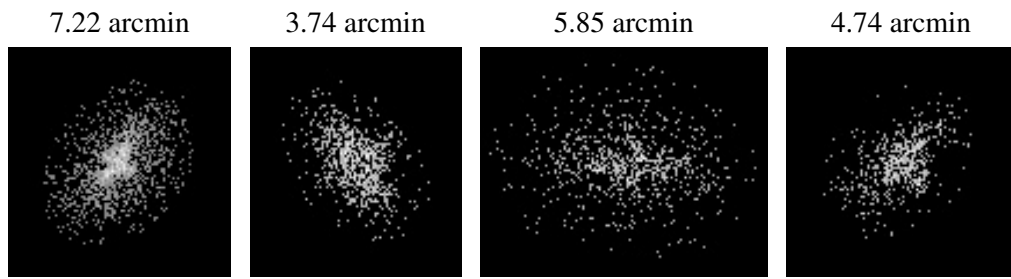
## 2.5.2 Slot 1



### 2.5.3 Slot 2



### 3 Point Sources



# A Summary

## A.1 Status

V&V Scientist	Jen Lauer
V&V Date (YYYY-MM-DD)	2006.09.18
V&V Edition	1
V&V Disposition and Status	OK
V&V Charge Time	168.897

## A.2 Comments

Window constraint met: the observation extends past the window boundaries on either end, and entirely requested encompasses the window.