

# V&V Reference Report

## L2 ASCDS Version : 8.4.5

Observation 4405 - L2 Version 3  
Chandra X-Ray Center

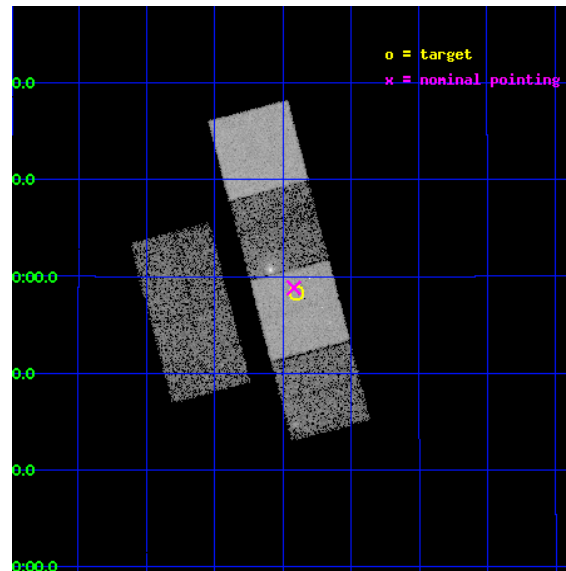
L2 Processing Date : Oct 19 2012

## Contents

<b>1</b>	<b>Front</b>	<b>2</b>
<b>2</b>	<b>OBI</b>	<b>3</b>
2.1	OBI . . . . .	3
2.1.1	Images . . . . .	3
2.1.2	Bias . . . . .	3
2.1.3	Parameters . . . . .	4
2.1.4	Events . . . . .	4
2.2	Compared Parameters . . . . .	5
2.3	Aspect . . . . .	6
2.4	Star Slots . . . . .	9
2.4.1	Slot 3 . . . . .	9
2.4.2	Slot 4 . . . . .	10
2.4.3	Slot 5 . . . . .	11
2.4.4	Slot 6 . . . . .	12
2.4.5	Slot 7 . . . . .	13
2.5	FID Slots . . . . .	14
2.5.1	Slot 0 . . . . .	14
2.5.2	Slot 1 . . . . .	15
2.5.3	Slot 2 . . . . .	16
<b>A</b>	<b>Summary</b>	<b>17</b>
A.1	Status . . . . .	17
A.2	Comments . . . . .	17

# 1 Front

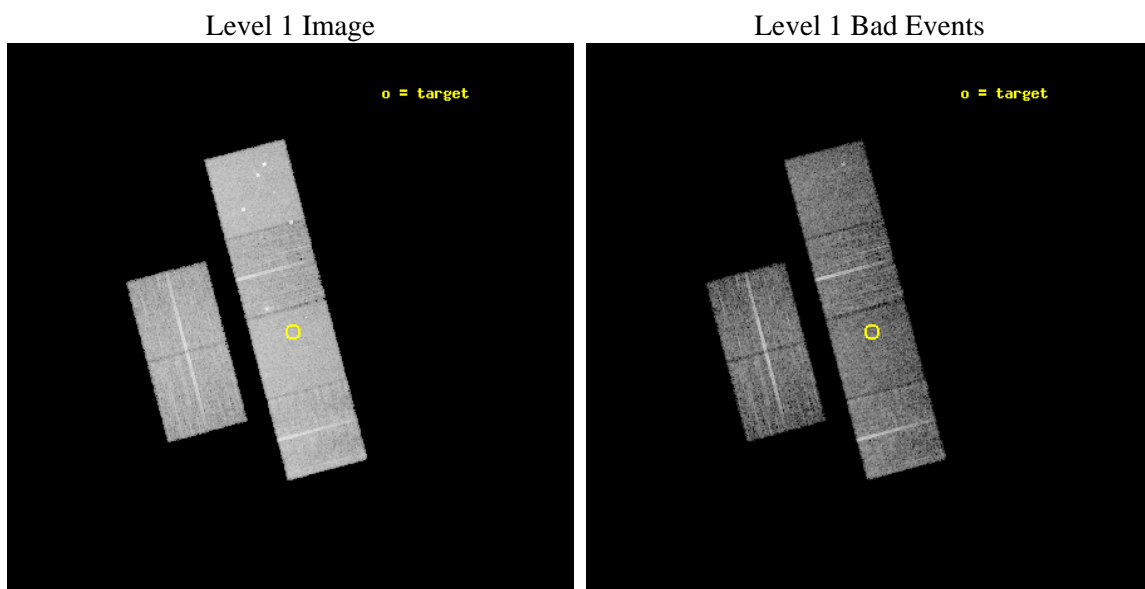
seq_num	500407	Sequence number
obs_id	4405	Observation id
title	PROMPT CHANDRA OBSERVATION OF THE TYPE IIN SN 2002HI	Proposal titl
observer	Prof. Walter Lewin	Principal investigator
object	SN 2002HI	Source name
dtcycle	0	&#160
cycle	P	events from which exps? Prim/Second/Both
ra_targ	109.975417	Observer's specified target RA [deg]
dec_targ	17.971722	Observer's specified target Dec [deg]
ra_nom	109.97964271089	Nominal RA [deg]
dec_nom	17.980510569918	Nominal Dec [deg]
roll_nom	75.218835296342	Nominal Roll [deg]
revision	3	Processing version of data
ontime	10115.199962318	Sum of GTIs [s]
livetime	9987.1152097529	Livetime [s]
ontime2	10115.199962318	Sum of GTIs [s]
ontime3	10115.199962318	Sum of GTIs [s]
ontime5	10115.199962318	Sum of GTIs [s]
ontime6	10115.199962318	Sum of GTIs [s]
ontime7	10115.199962318	Sum of GTIs [s]
ontime8	10115.199962318	Sum of GTIs [s]
l2events	99999	Number of level 2 events



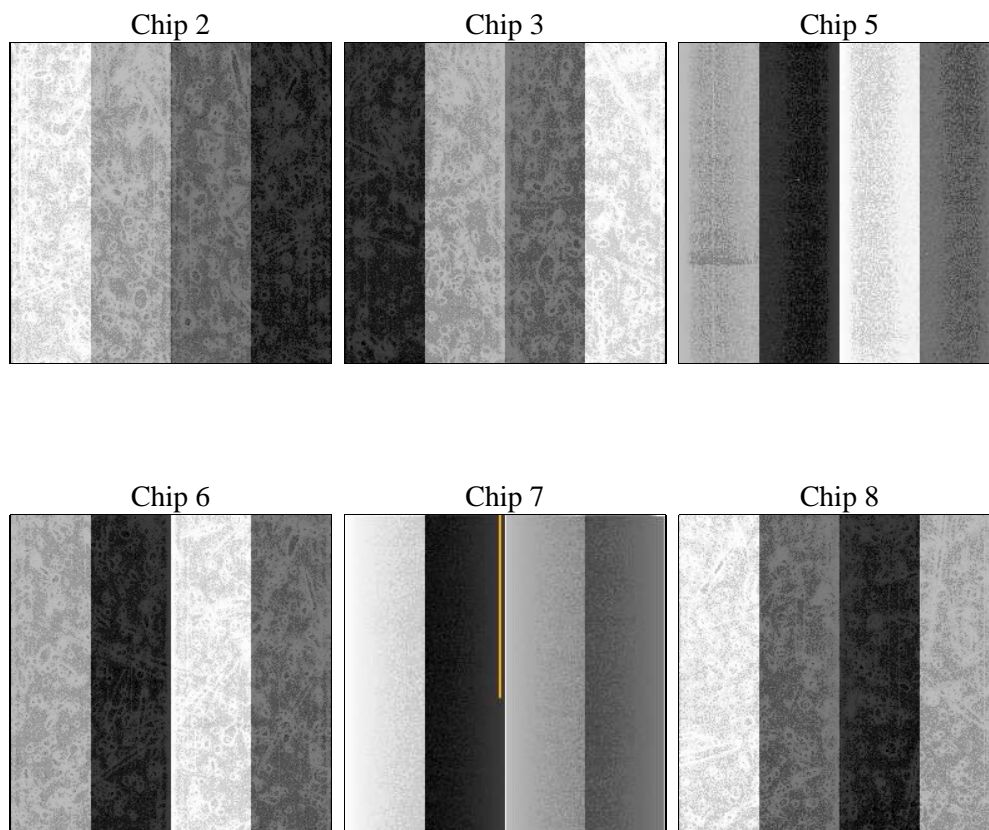
## 2 OBI

### 2.1 OBI

#### 2.1.1 Images



#### 2.1.2 Bias



### 2.1.3 Parameters

obi_num	0	Obi number	sched_exp_time	10000.000000	[s] Scheduled observation exposure time
ascdsver	8.4.5	Processing system revision	ontime	10115.199962318	Sum of GTIs [s]
caldbver	4.5.2	&#160	ontime2	10115.199962318	Sum of GTIs [s]
date	2012-10-19T05:07:02	Date and time of file creation	ontime3	10115.199962318	Sum of GTIs [s]
revision	3	Processing version of data	ontime5	10115.199962318	Sum of GTIs [s]
			ontime6	10115.199962318	Sum of GTIs [s]
			ontime7	10115.199962318	Sum of GTIs [s]
			ontime8	10115.199962318	Sum of GTIs [s]
			l1events	454539	Number of level 1 events

### 2.1.4 Events

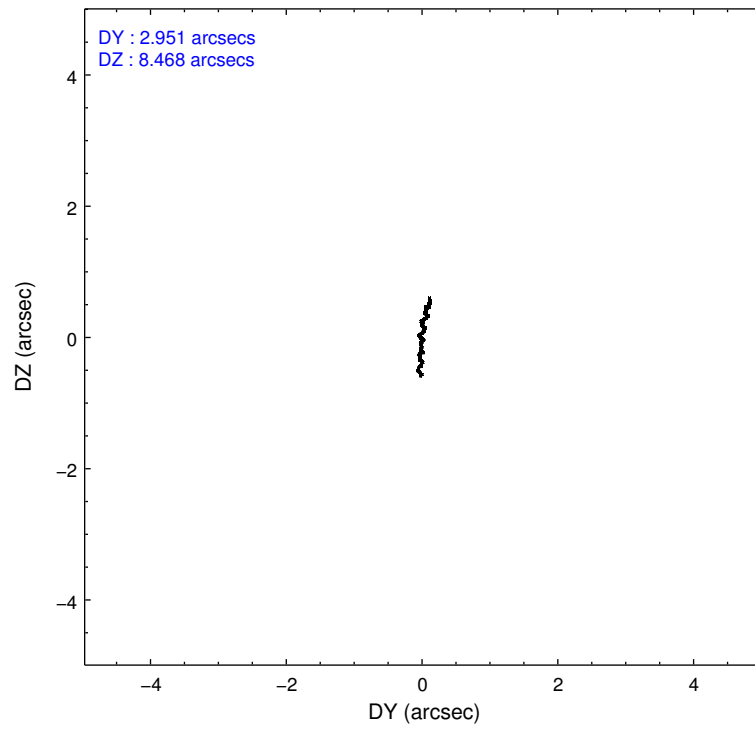
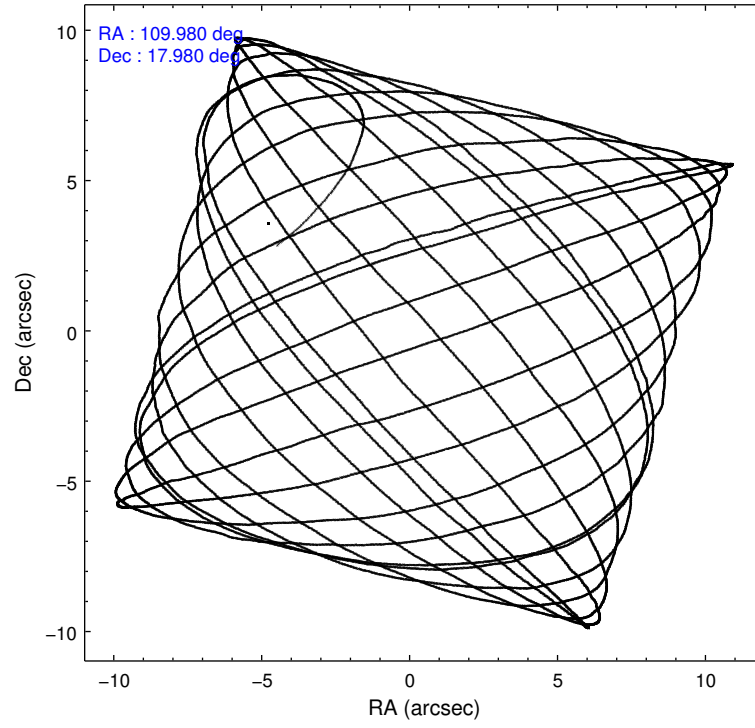
	ccd 2	ccd 3	ccd 5	ccd 6	ccd 7	ccd 8		ccd 2	ccd 3	ccd 5	ccd 6	ccd 7	ccd 8
level 1 events	64918	62145	94925	65712	85618	81221	grade 0 events	3242	3198	5067	4435	3368	5447
rejected events	57721	55141	52405	56825	50995	64549		4%	5%	5%	6%	3%	6%
rejected %	88%	88%	55%	86%	59%	79%	grade 1 events	33	46	135	32	93	52
								0%	0%	0%	0%	0%	0%
							grade 2 events	1521	1389	12819	1709	7050	3587
								2%	2%	13%	2%	8%	4%
							grade 3 events	688	735	1718	757	3268	1906
								1%	1%	1%	1%	3%	2%
							grade 4 events	714	718	1603	719	3194	1779
								1%	1%	1%	1%	3%	2%
							grade 5 events	2562	2722	7013	2914	8209	3749
								3%	4%	7%	4%	9%	4%
							grade 6 events	1248	1198	22593	1479	18675	4412
								1%	1%	23%	2%	21%	5%
							grade 7 events	54910	52139	43977	53667	41761	60289
								84%	83%	46%	81%	48%	74%

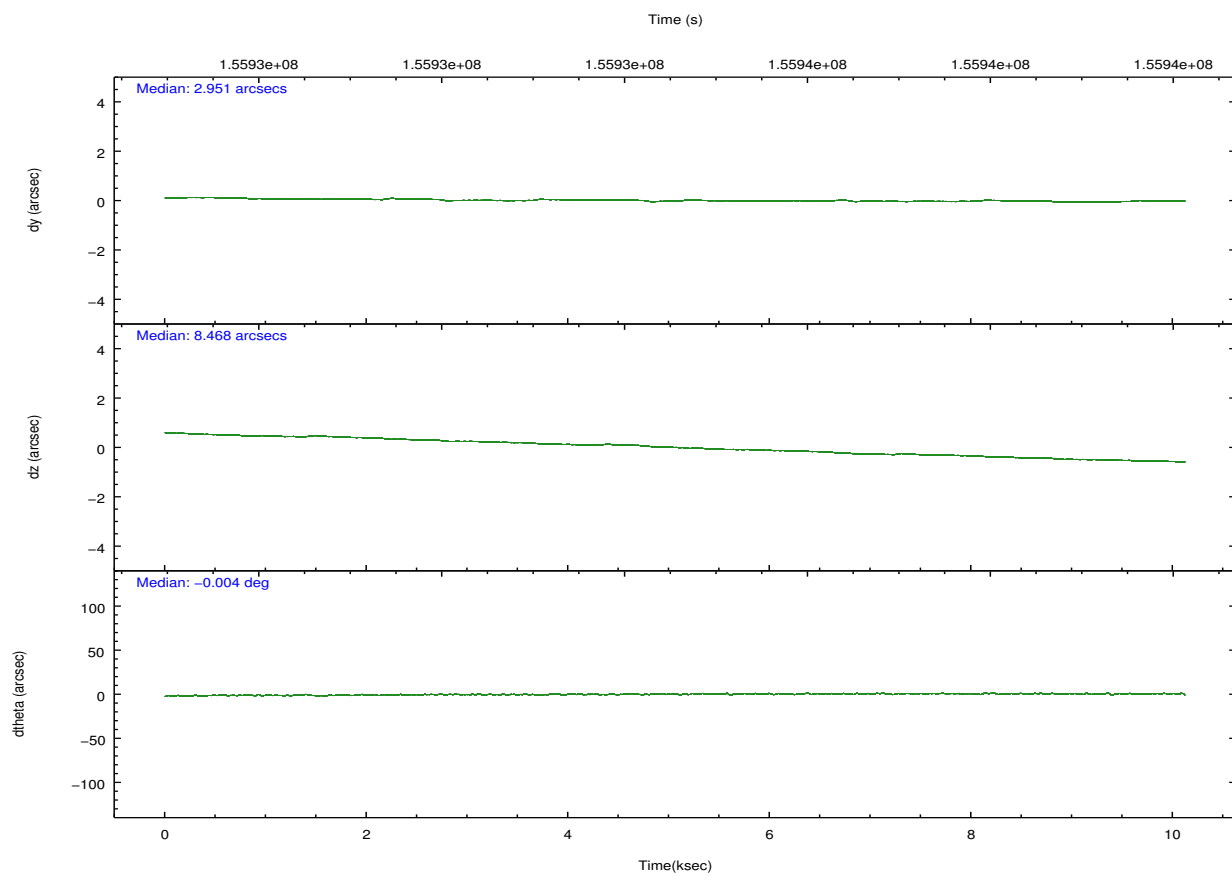
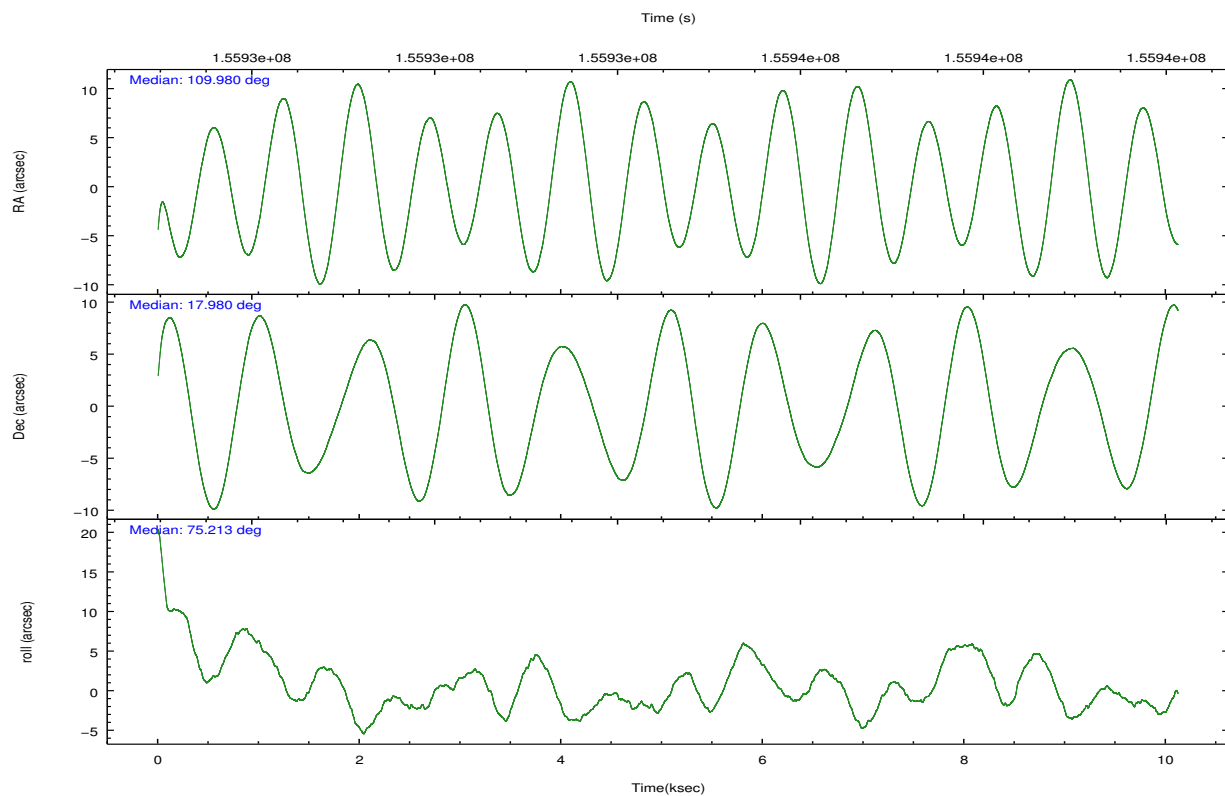


## 2.2 Compared Parameters

Parameter	Planned	Actual	Parameter	Planned	Actual
Instrument	ACIS	ACIS	Obspar format version number	7	7
Detector	ACIS-235678	ACIS-235678	Obspar file type	PREDICTED	ACTUAL
Grating	NONE	NONE	Obspar update status	NONE	UPDATED
Data mode	FAINT	FAINT	Number of optional ACIS chips dropped	0	0
Observation mode	POINTING	POINTING	On-chip summing requested	N	N
[deg] Pointing RA	109.987579	109.9796427108877	Subarray requested	NONE	NONE
[deg] Pointing Dec	17.954318	17.98051056991815	Alternating exposures requested	N	N
[deg] Pointing Roll	75.059746	75.21883529634154	[s] Primary exposure time	0.000000	3.2
[mm] SIM focus pos	-0.684267	-0.6828225247311905			
[mm] SIM defocus	0	0.001444936568705701			
[mm] SIM translation stage pos	-190.132523	-190.1425803651734			
[mm] SIM translation stage offset	0	0.01005778216563158			
[s] Observation start time (MET)	155929613.184000	155928432.59055			
Observation start date	2002-12-10T17:45:49	2002-12-10T17:27:12			
[s] Observation end time (MET)	155939613.184000	155940648.54106			
Observation end date	2002-12-10T20:32:29	2002-12-10T20:50:48			
Read mode	TIMED	TIMED			

## 2.3 Aspect



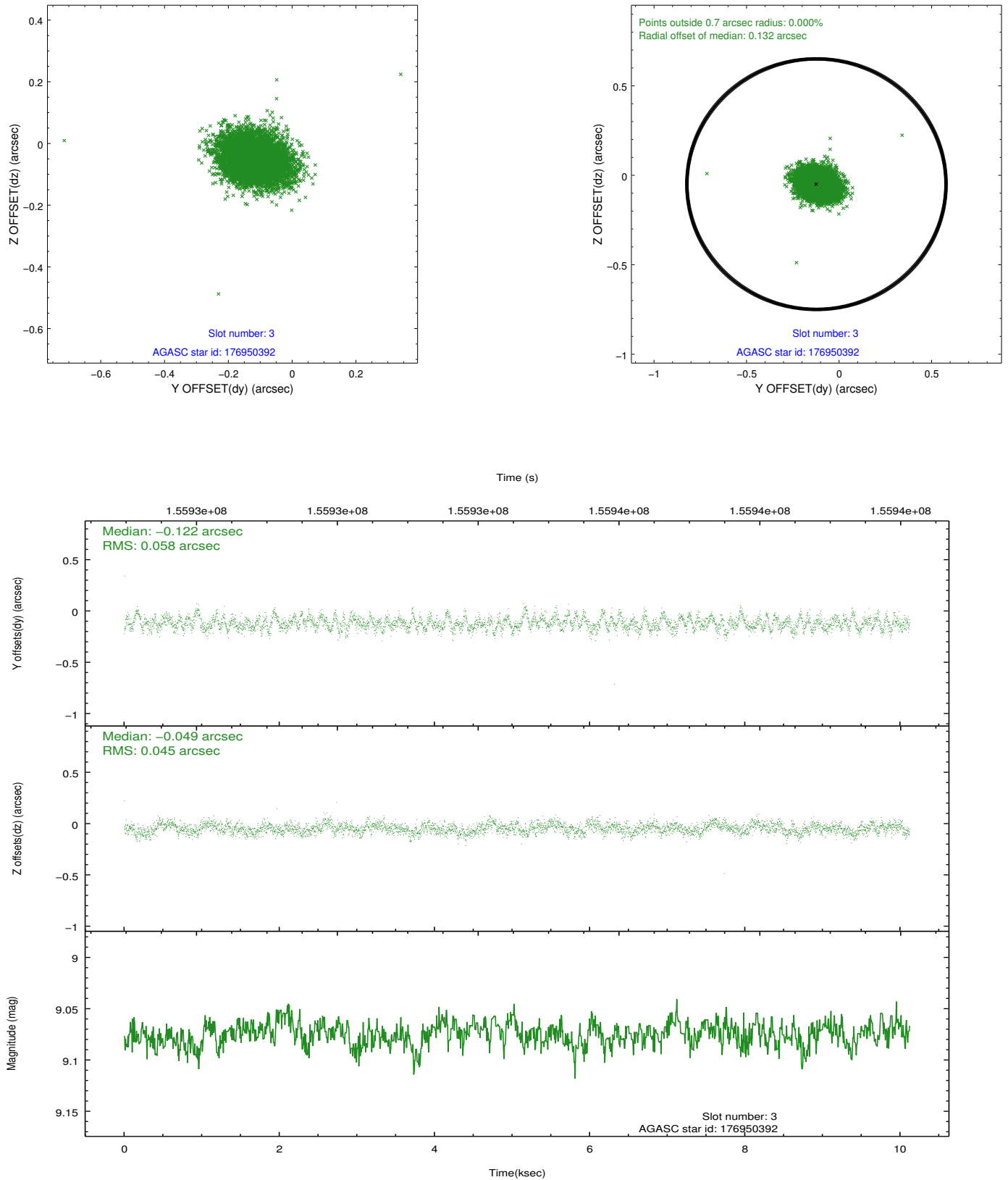


### Slot Statistics

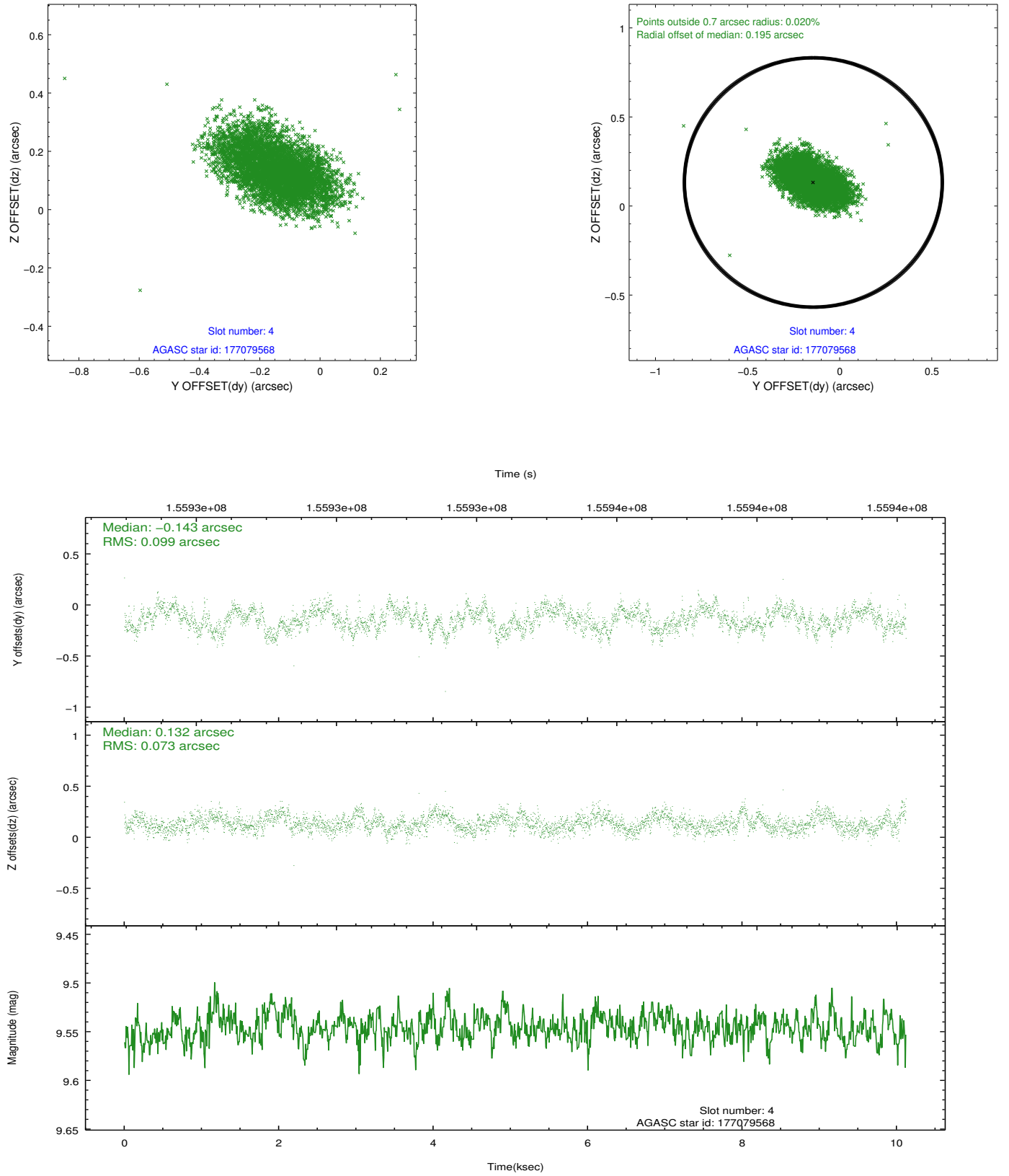
slot	status	id	mag	n_pts	med_dy	med_dz	dr1	dr2	ra	dec	mean_y	mean_z
0	FID	ACIS-S-2	7.11	2469	-0.014	-0.008	0.011	0.016	0.000000	0.000000	-755.63	-1729.62
1	FID	ACIS-S-4	7.20	2469	-0.004	0.009	0.012	0.020	0.000000	0.000000	2157.43	178.32
2	FID	ACIS-S-5	7.24	2469	-0.014	0.008	0.007	0.011	0.000000	0.000000	-1807.79	172.61
3	GUIDE	176950392	9.07	4937	-0.122	-0.049	0.077	0.127	109.742126	18.569121	1922.91	1380.46
4	GUIDE	177079568	9.55	4936	-0.143	0.132	0.129	0.212	110.679889	18.160043	1330.92	-2095.31
5	GUIDE	176947776	8.82	4936	-0.132	-0.316	0.082	0.131	109.380029	18.076186	-108.86	2122.38
6	GUIDE	176947576	8.78	4937	0.189	0.141	0.077	0.134	109.972979	17.294445	-2307.89	-563.42
7	GUIDE	177080328	9.90	4933	0.208	0.088	0.129	0.221	110.013366	17.317546	-2192.15	-676.69

## 2.4 Star Slots

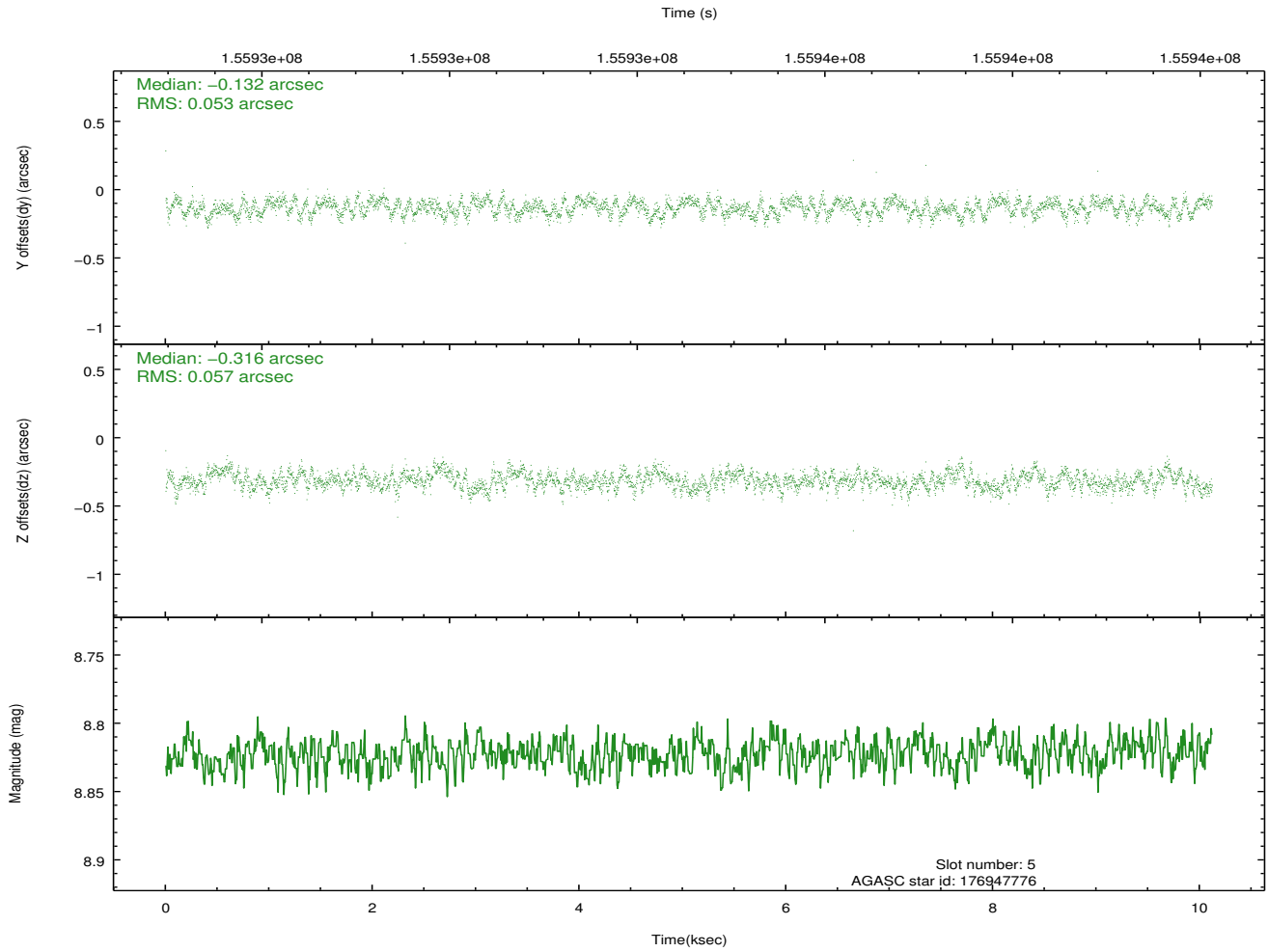
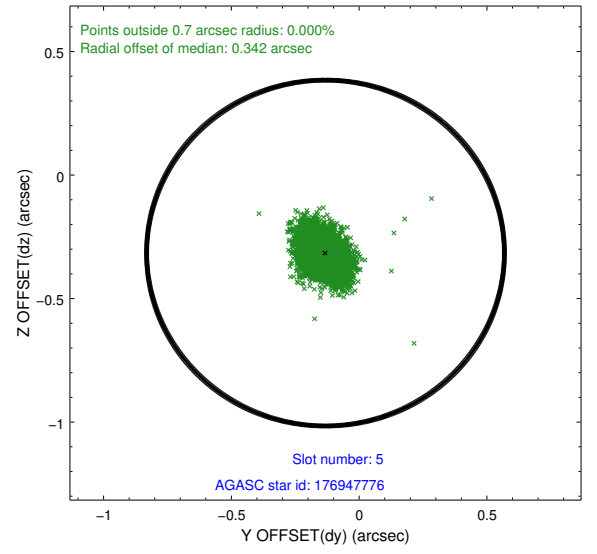
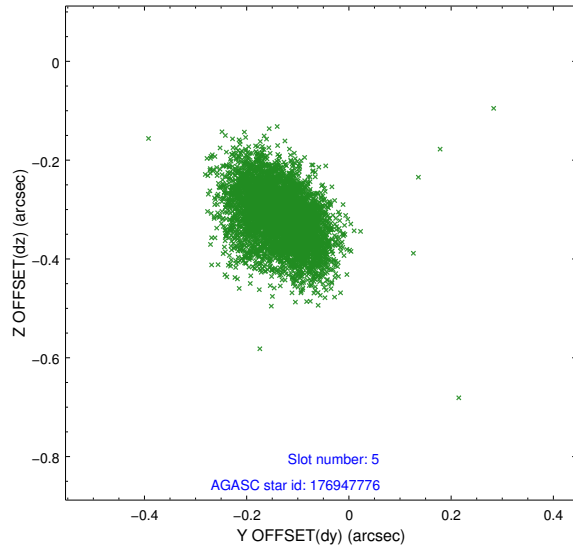
### 2.4.1 Slot 3



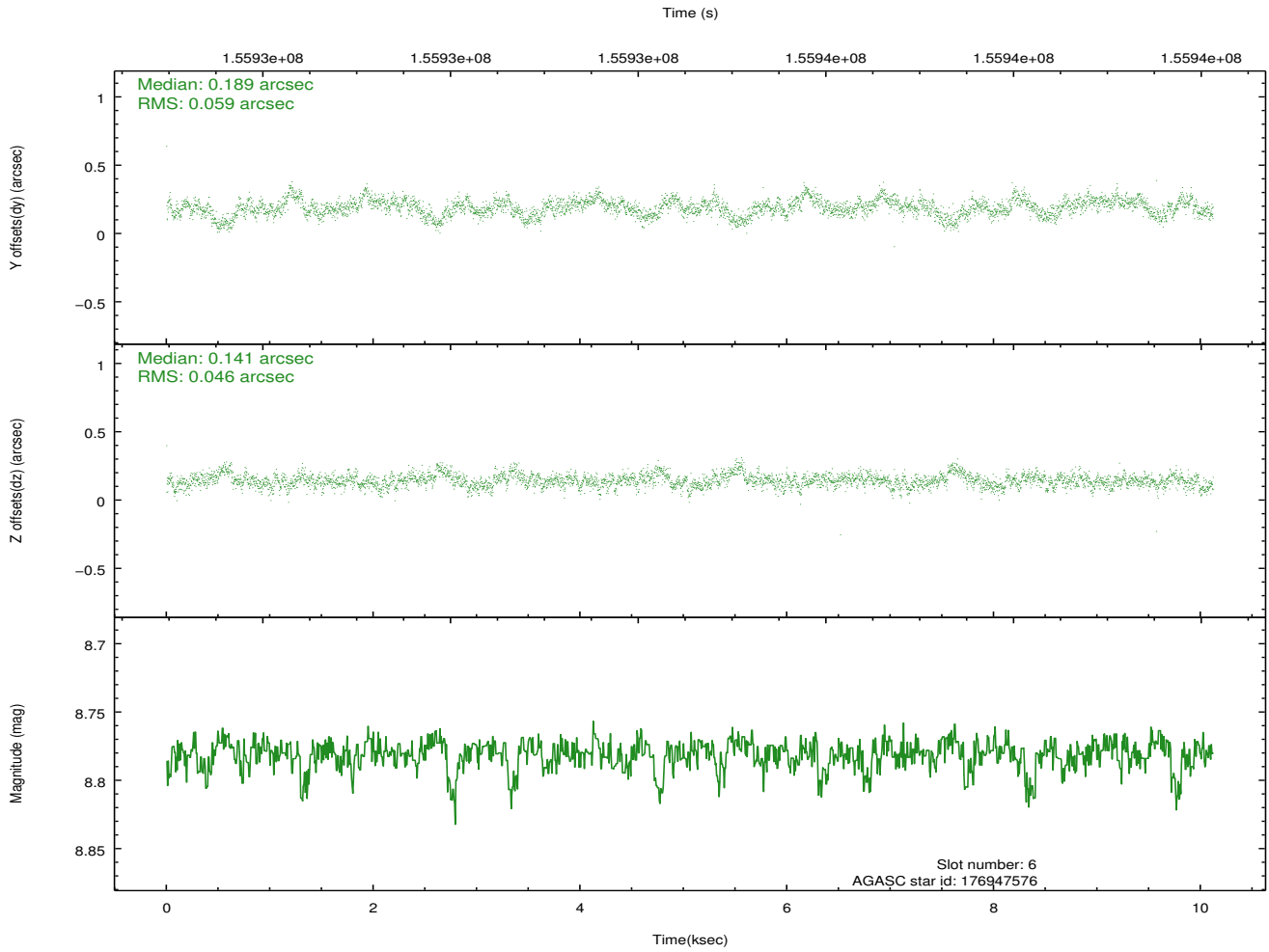
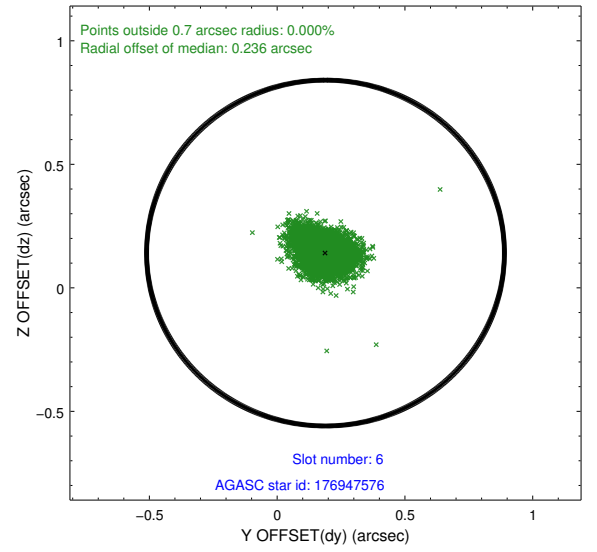
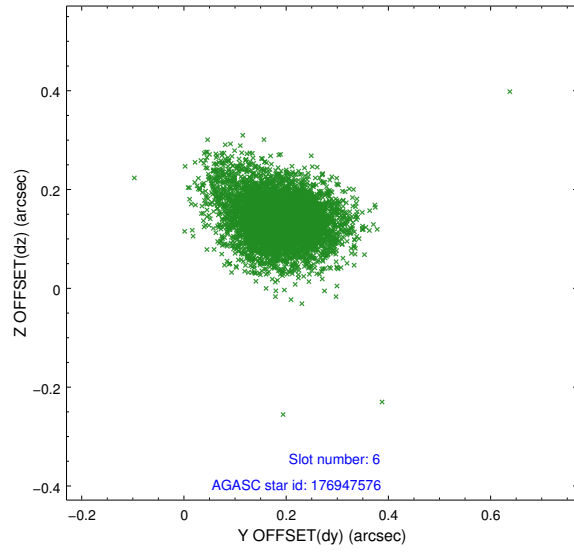
## 2.4.2 Slot 4



### 2.4.3 Slot 5

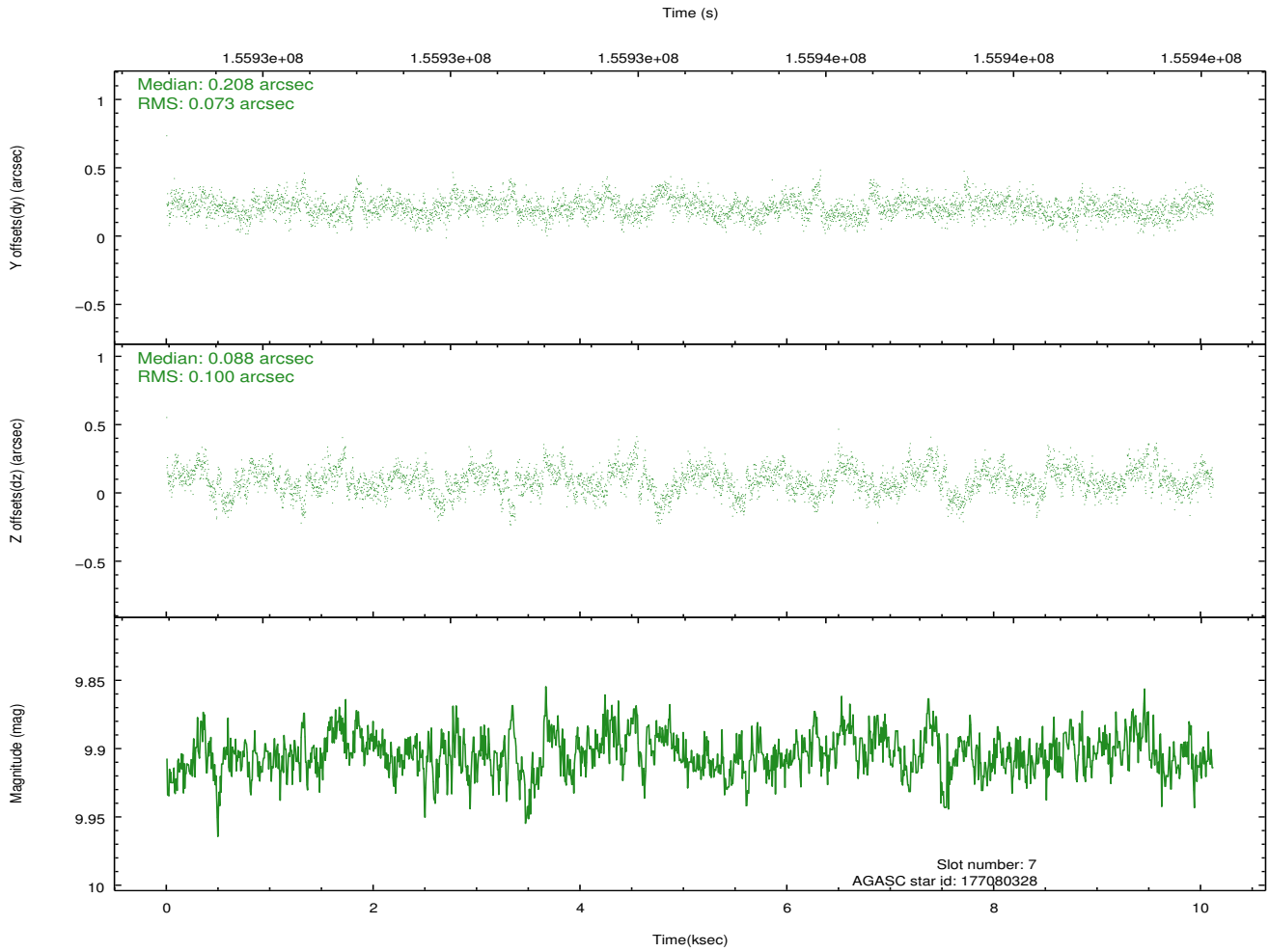
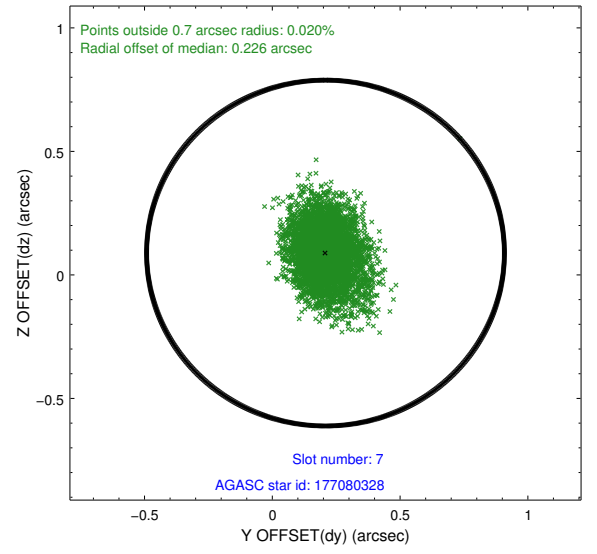
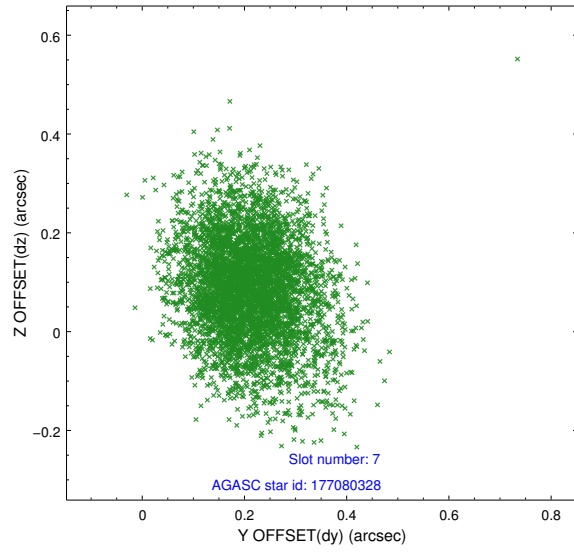


## 2.4.4 Slot 6



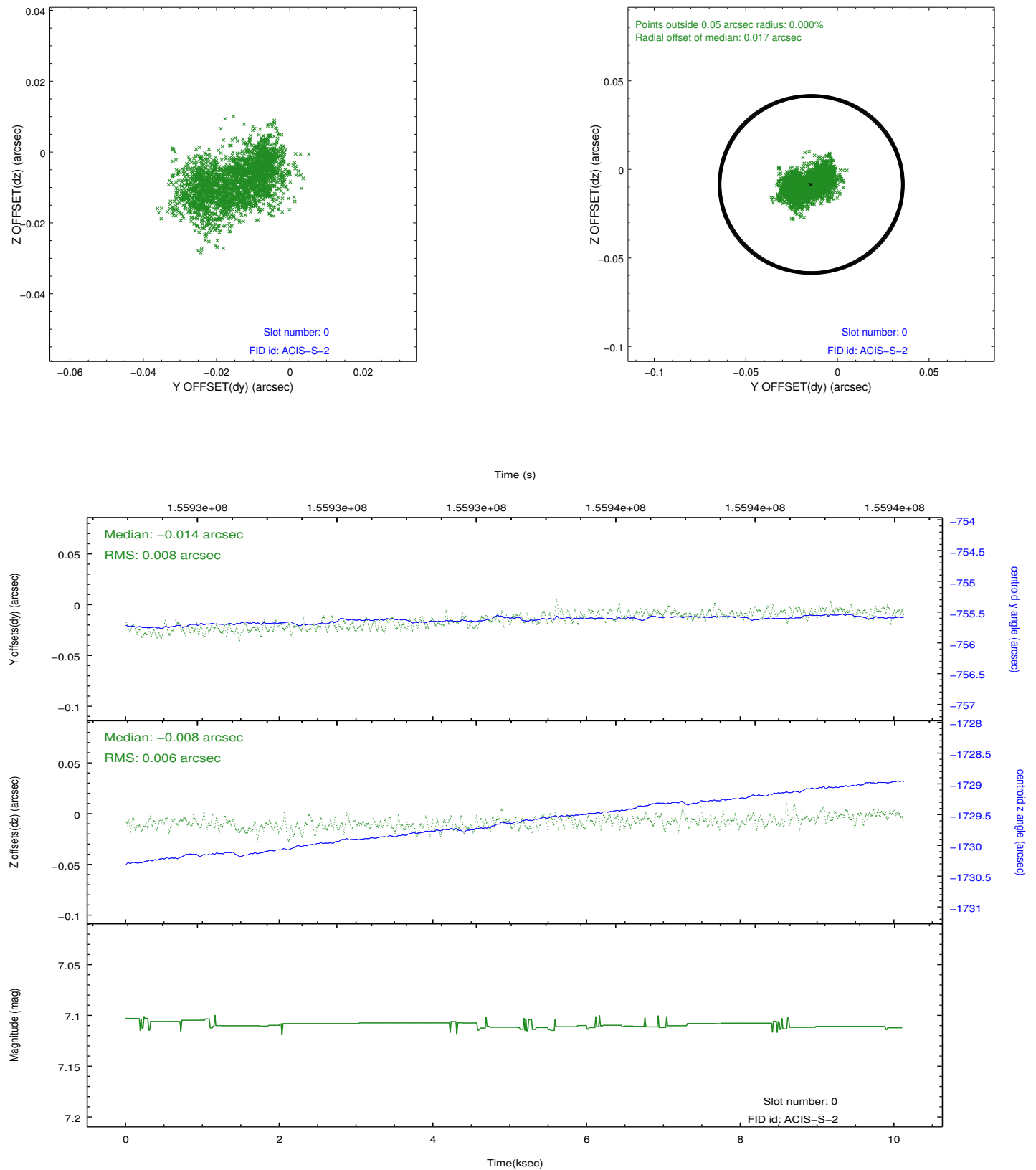


## 2.4.5 Slot 7

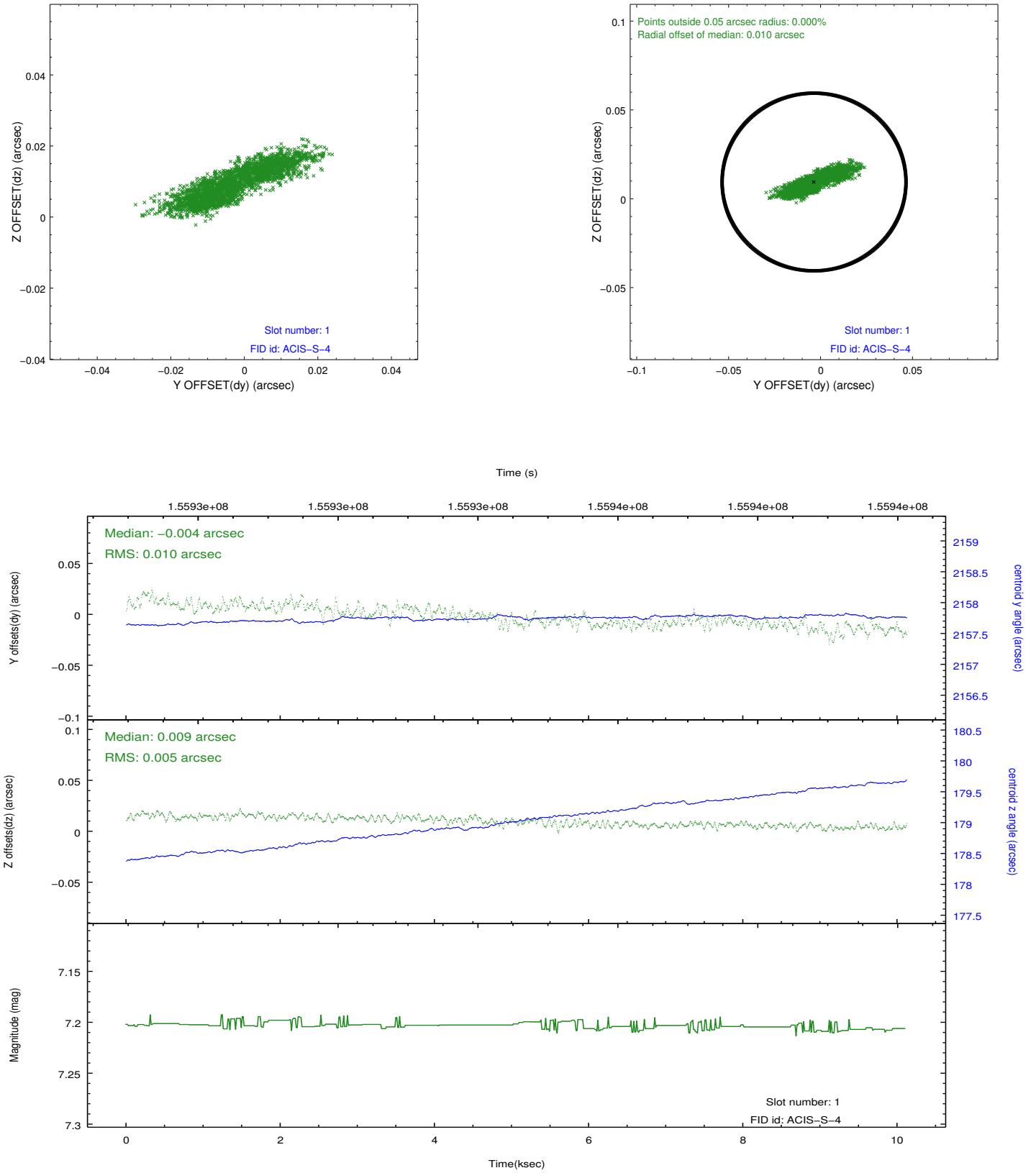


## 2.5 FID Slots

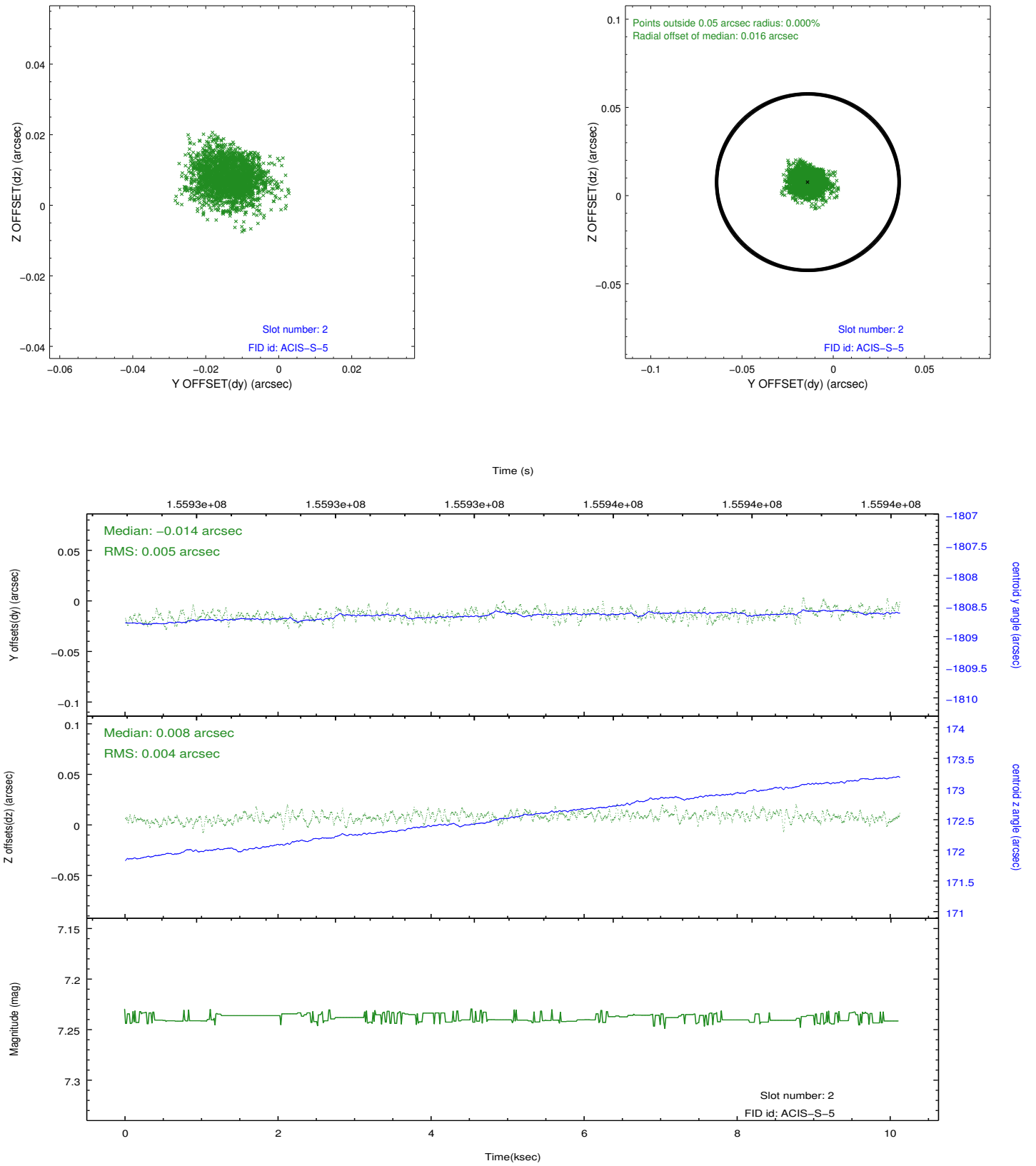
### 2.5.1 Slot 0



## 2.5.2 Slot 1



### 2.5.3 Slot 2



## A Summary

### A.1 Status

V&V Scientist	Jen Lauer
V&V Date (YYYY-MM-DD)	2012.10.30
V&V Edition	1
V&V Disposition and Status	OK
V&V Charge Time	10.115

### A.2 Comments