

V&V Reference Report

L2 ASCDS Version : 7.6.9

Observation 4405 - L2 Version 001
Chandra X-Ray Center

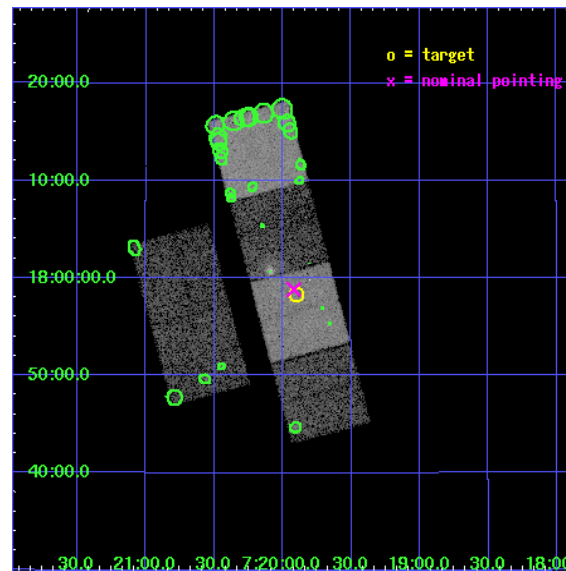
L2 Processing Date : Oct 14 2006

Contents

1	Front	2
2	OBI	3
2.1	OBI	3
2.1.1	Images	3
2.1.2	Bias	3
2.1.3	Parameters	4
2.1.4	Events	4
2.2	Compared Parameters	5
2.3	Aspect	6
2.4	Star Slots	9
2.4.1	Slot 3	9
2.4.2	Slot 4	10
2.4.3	Slot 5	11
2.4.4	Slot 6	12
2.4.5	Slot 7	13
2.5	FID Slots	14
2.5.1	Slot 0	14
2.5.2	Slot 1	15
2.5.3	Slot 2	16
3	Point Sources	17
A	Summary	18
A.1	Status	18
A.2	Comments	18

1 Front

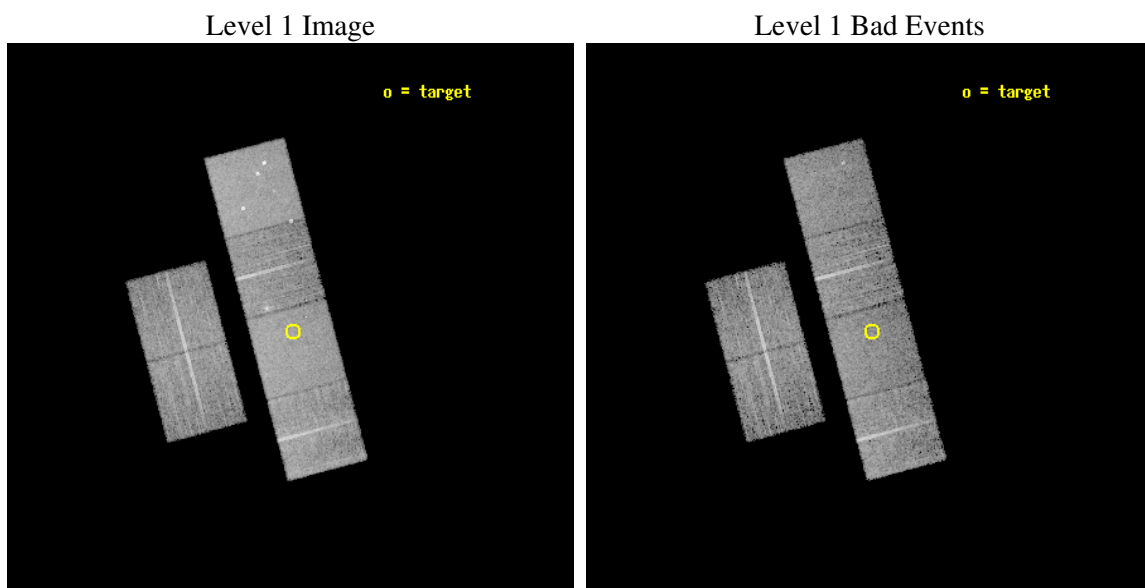
seq_num	500407
obs_id	4405
title	PROMPT CHANDRA OBSERVATION OF THE TYPE IIN SN 2002HI
observer	Prof. Walter Lewin
object	SN 2002HI
dtcycle	0
cycle	P
ra_targ	109.975417
dec_targ	17.971722
ra_nom	109.97964271089
dec_nom	17.980510569918
roll_nom	75.218835296342
revision	2
ontime	10115.199962318
livetime	9987.1152097529
ontime2	10115.199962318
ontime3	10115.199962318
ontime5	10115.199962318
ontime6	10115.199962318
ontime7	10115.199962318
ontime8	10115.199962318
l2events	96167



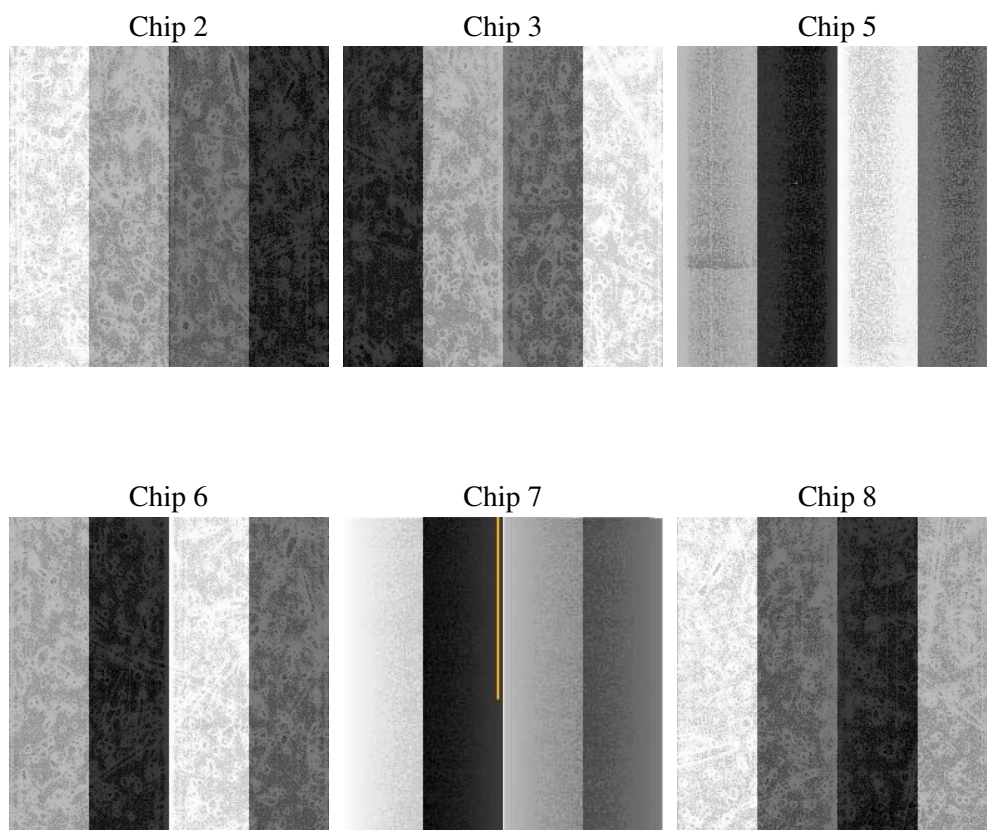
2 OBI

2.1 OBI

2.1.1 Images



2.1.2 Bias



2.1.3 Parameters

obi_num	0
ascdsver	7.6.9
caldbver	3.2.3
date	2006-10-14T22:49:20
revision	2

sched_exp_time	10000.000000
ontime	10406.862134188
ontime2	10406.862134188
ontime3	10406.862134188
ontime5	10406.862134188
ontime6	10406.862134188
ontime7	10406.862134188
ontime8	10406.862134188
l1events	454539

2.1.4 Events

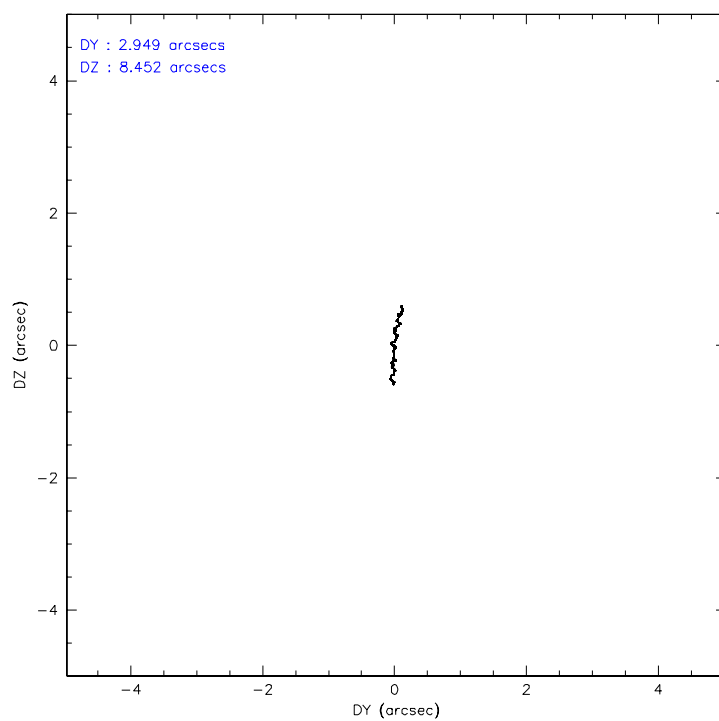
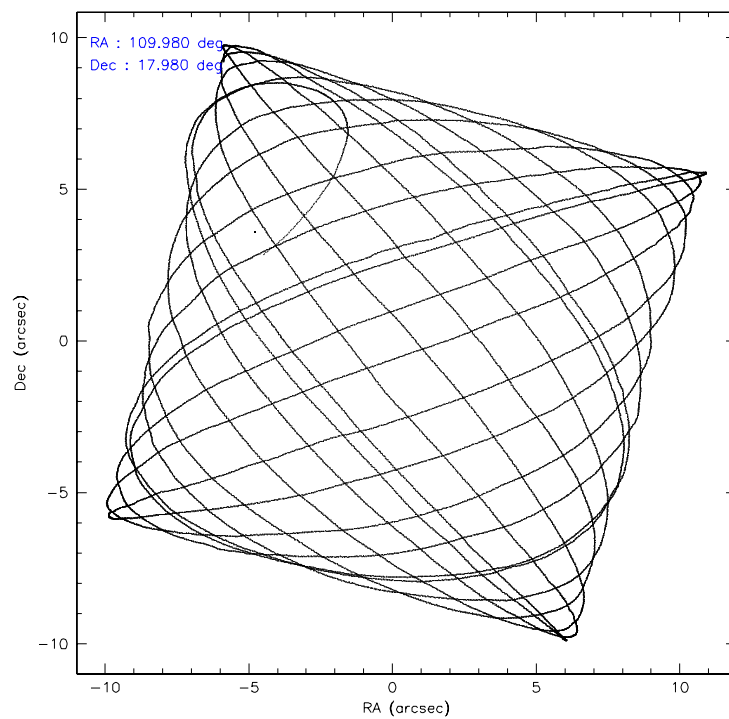
	ccd 2	ccd 3	ccd 5	ccd 6	ccd 7	ccd 8
level 1 events	64918	62145	94925	65712	85618	81221
rejected events	57721	55141	53857	56825	53579	64549
rejected %	88%	88%	56%	86%	62%	79%

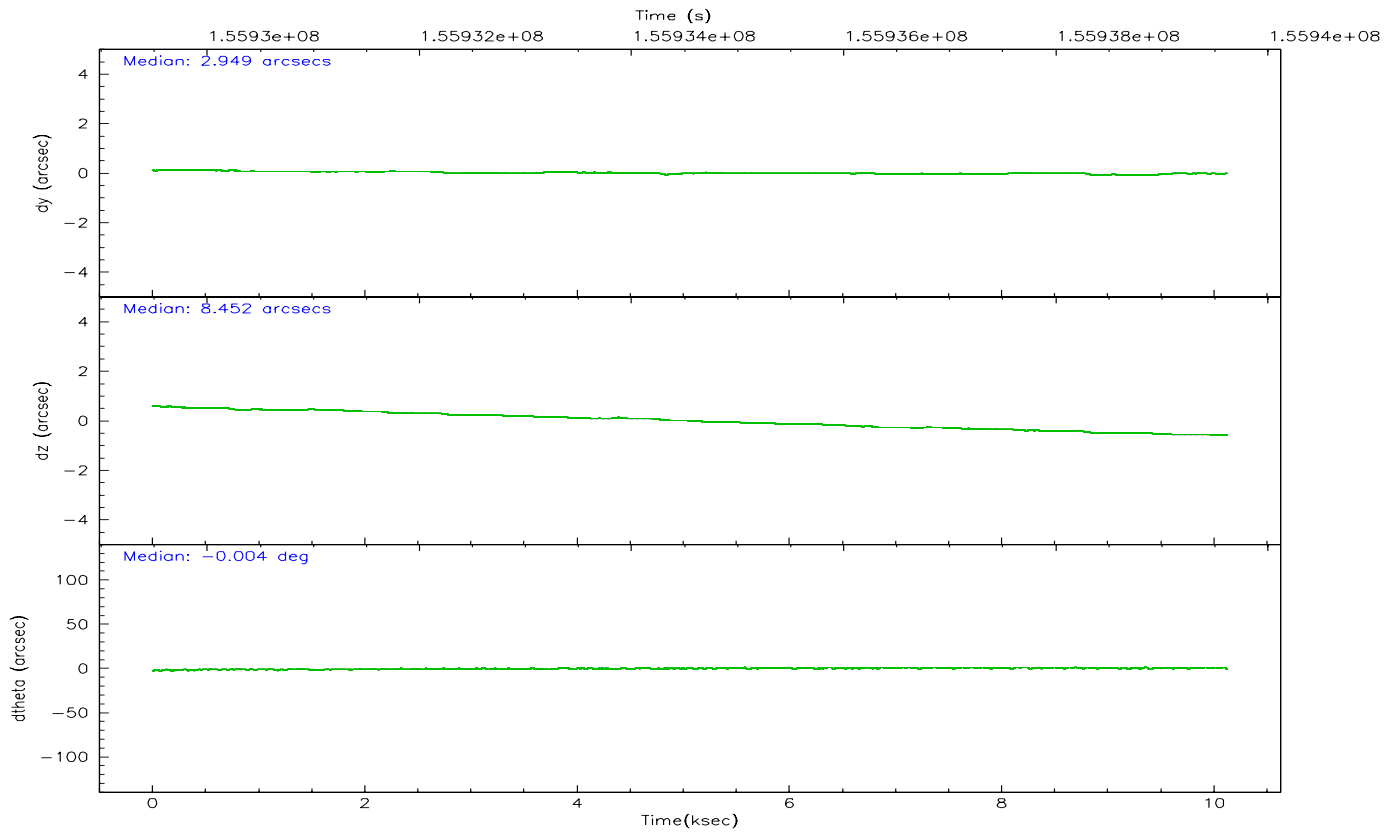
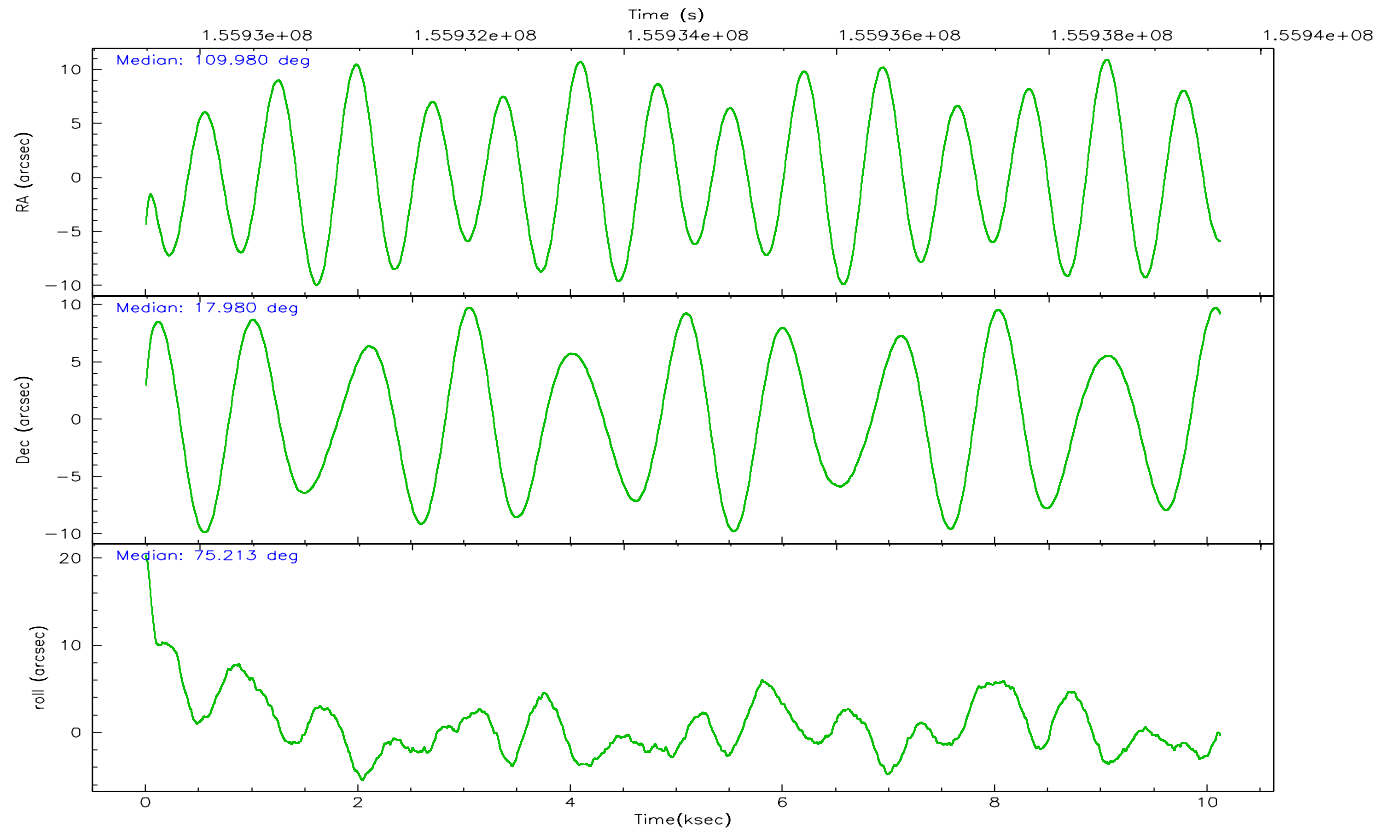
	ccd 2	ccd 3	ccd 5	ccd 6	ccd 7	ccd 8
grade 0 events	3242	3198	4016	4434	2051	5447
	4%	5%	4%	6%	2%	6%
grade 1 events	33	46	109	32	55	52
	0%	0%	0%	0%	0%	0%
grade 2 events	1521	1389	12889	1710	8126	3587
	2%	2%	13%	2%	9%	4%
grade 3 events	688	735	919	757	1755	1906
	1%	1%	0%	1%	2%	2%
grade 4 events	714	718	839	719	1677	1779
	1%	1%	0%	1%	1%	2%
grade 5 events	2562	2722	4548	2914	5740	3749
	3%	4%	4%	4%	6%	4%
grade 6 events	1248	1198	23633	1479	19285	4412
	1%	1%	24%	2%	22%	5%
grade 7 events	54910	52139	47972	53667	46929	60289
	84%	83%	50%	81%	54%	74%

2.2 Compared Parameters

Parameter	Planned	Actual	Parameter	Planned	Actual
Instrument	ACIS	ACIS	Obspar format version number	6	6
Detector	ACIS-235678	ACIS-235678	Obspar file type	PREDICTED	ACTUAL
Grating	NONE	NONE	Obspar update status	NONE	UPDATED
Data mode	FAINT	FAINT	Number of optional ACIS chips dropped	0	0
Observation mode	POINTING	POINTING	On-chip summing requested	N	N
Pointing RA	109.987579	109.9796427108877	Subarray requested	NONE	NONE
Pointing Dec	17.954318	17.98051056991815	Alternating exposures requested	N	N
Pointing Roll	75.059746	75.21883529634154	Primary exposure time	0.000000	3.2
SIM focus pos (mm)	-0.684267	-0.6828225247311905			
SIM defocus (mm)	0	0.001444936568705701			
SIM translation stage pos (mm)	-190.132523	-190.1425803651734			
SIM translation stage offset (mm)	0	0.01005778216563158			
Observation start time	155929613.184000	155928432.59055			
Observation start date	2002-12-10T17:45:49	2002-12-10T17:27:12			
Observation end time	155939613.184000	155940648.54106			
Observation end date	2002-12-10T20:32:29	2002-12-10T20:50:48			
Read mode	TIMED	TIMED			

2.3 Aspect



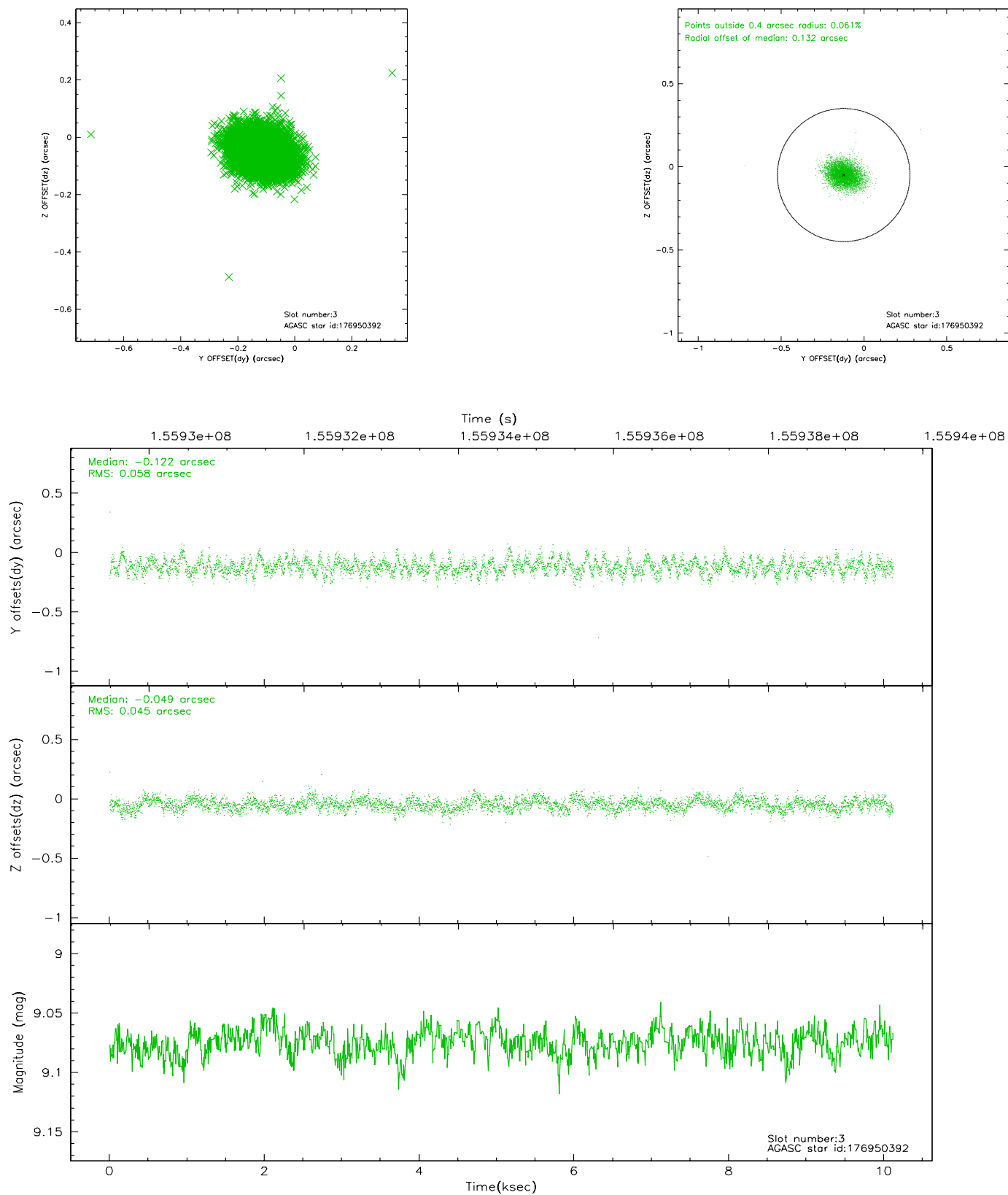


Slot Statistics

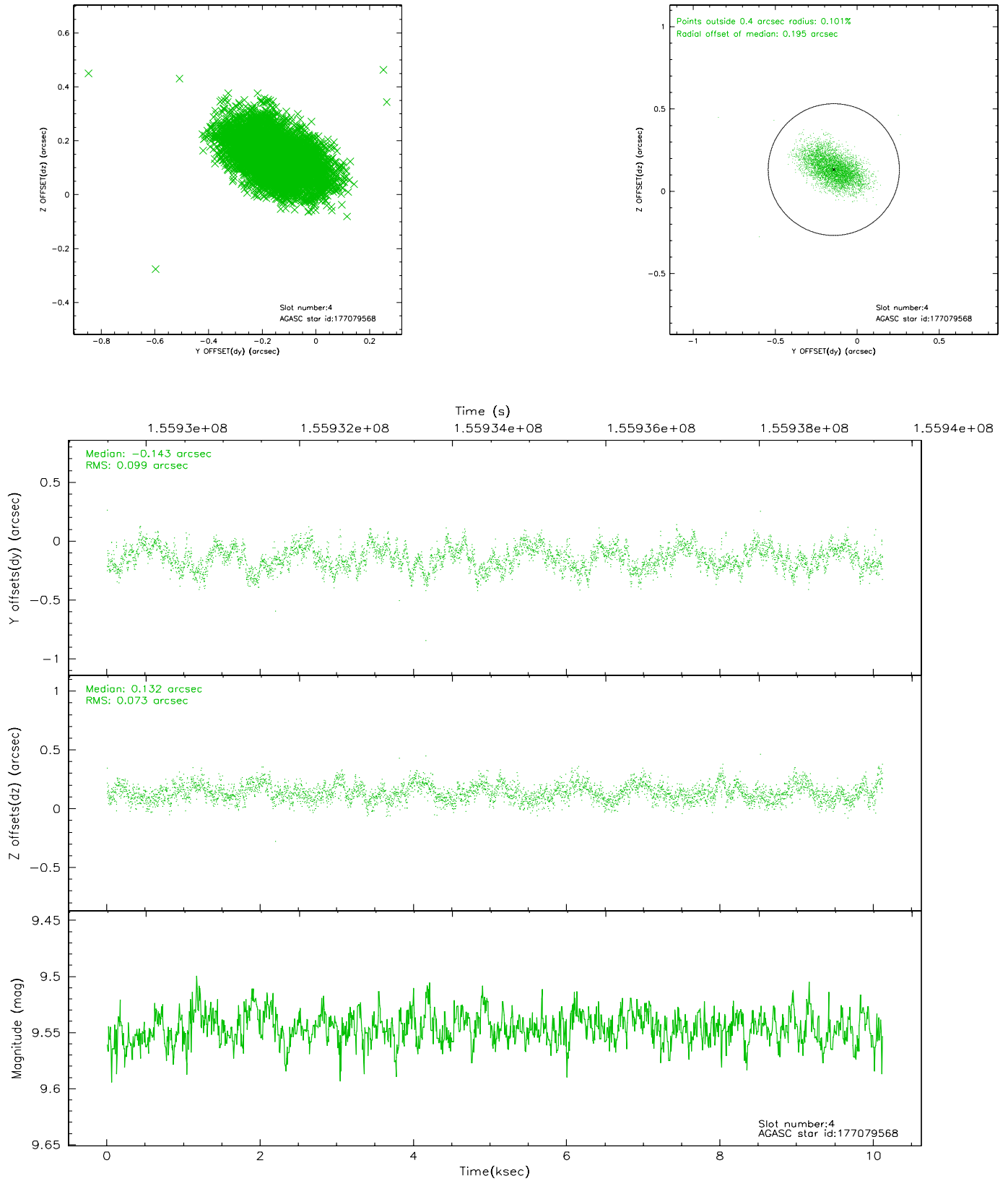
slot	status	id	mag	n_pts	med_dy	med_dz	dr1	dr2	ra	dec	mean_y	mean_z
0	FID	ACIS-S-2	7.11	2469	-0.003	0.015	0.010	0.015	0.000000	0.000000	-755.62	-1729.58
1	FID	ACIS-S-4	7.20	2469	-0.046	-0.002	0.009	0.016	0.000000	0.000000	2157.39	178.33
2	FID	ACIS-S-5	7.24	2469	0.017	-0.004	0.007	0.011	0.000000	0.000000	-1807.75	172.61
3	GUIDE	176950392	9.07	4937	-0.122	-0.049	0.077	0.127	109.742126	18.569121	1922.91	1380.46
4	GUIDE	177079568	9.55	4936	-0.143	0.132	0.129	0.212	110.679889	18.160043	1330.92	-2095.31
5	GUIDE	176947776	8.82	4936	-0.132	-0.316	0.082	0.131	109.380029	18.076186	-108.86	2122.38
6	GUIDE	176947576	8.78	4937	0.189	0.141	0.077	0.134	109.972979	17.294445	-2307.89	-563.42
7	GUIDE	177080328	9.90	4933	0.208	0.088	0.129	0.221	110.013366	17.317546	-2192.15	-676.69

2.4 Star Slots

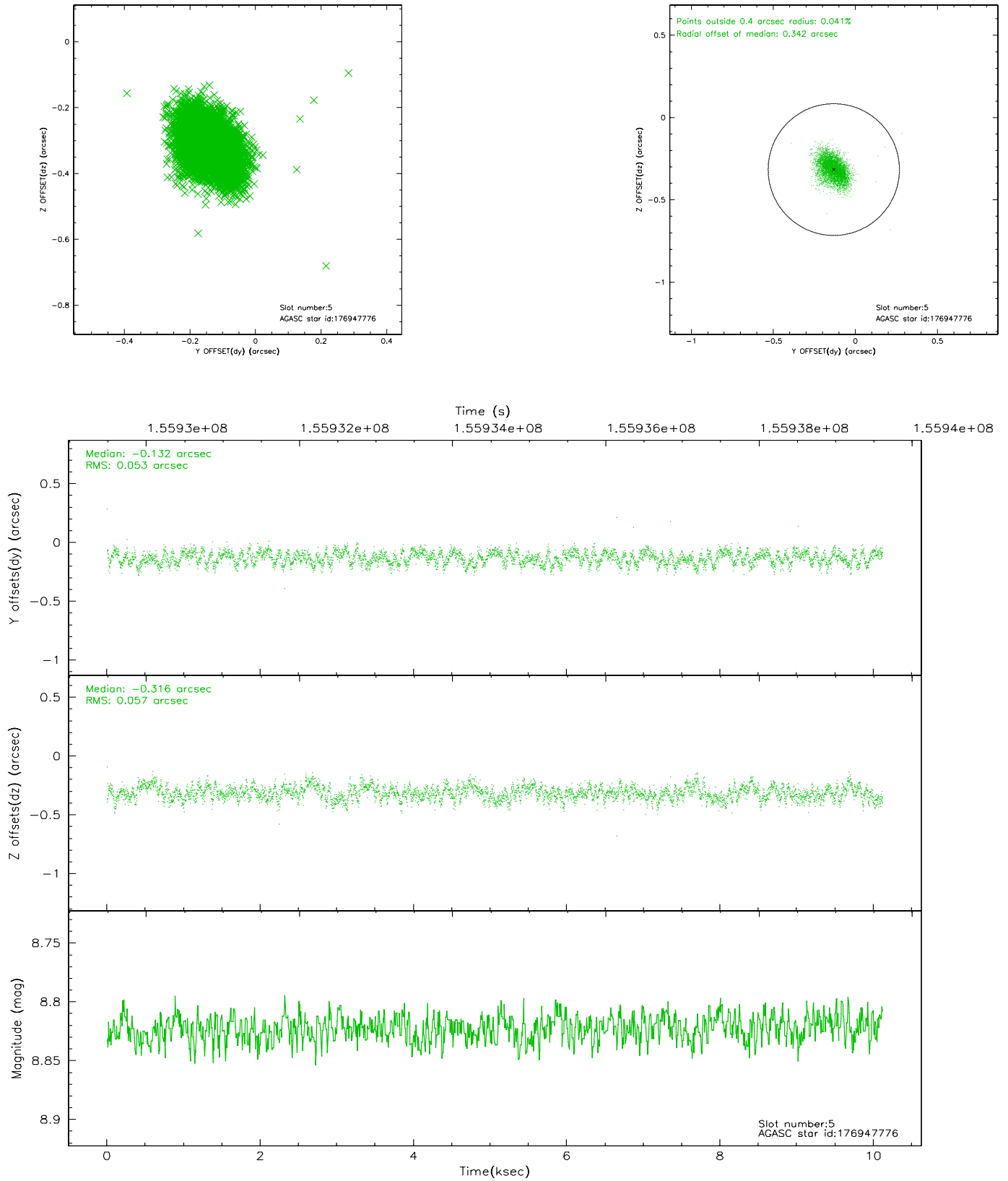
2.4.1 Slot 3



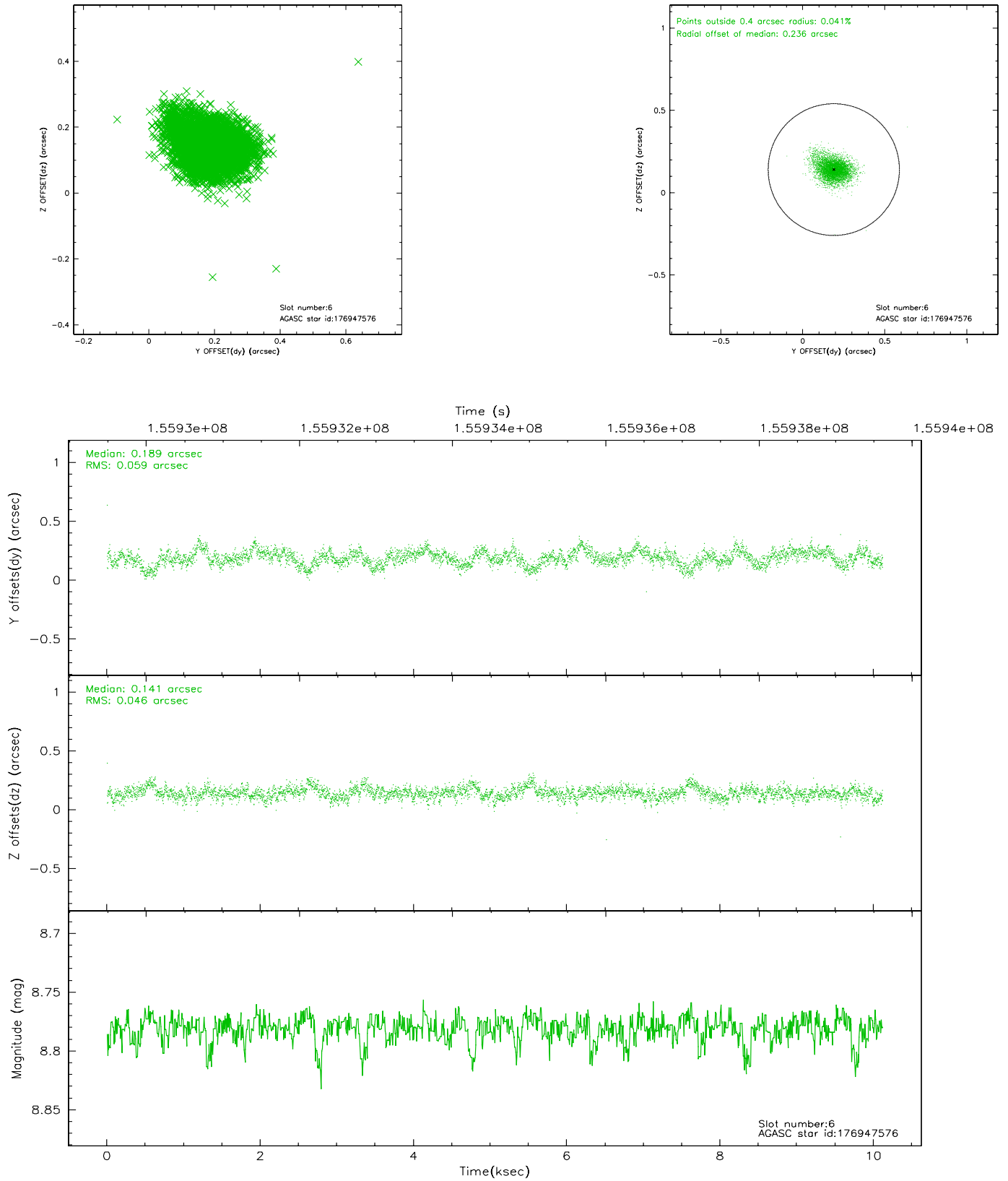
2.4.2 Slot 4



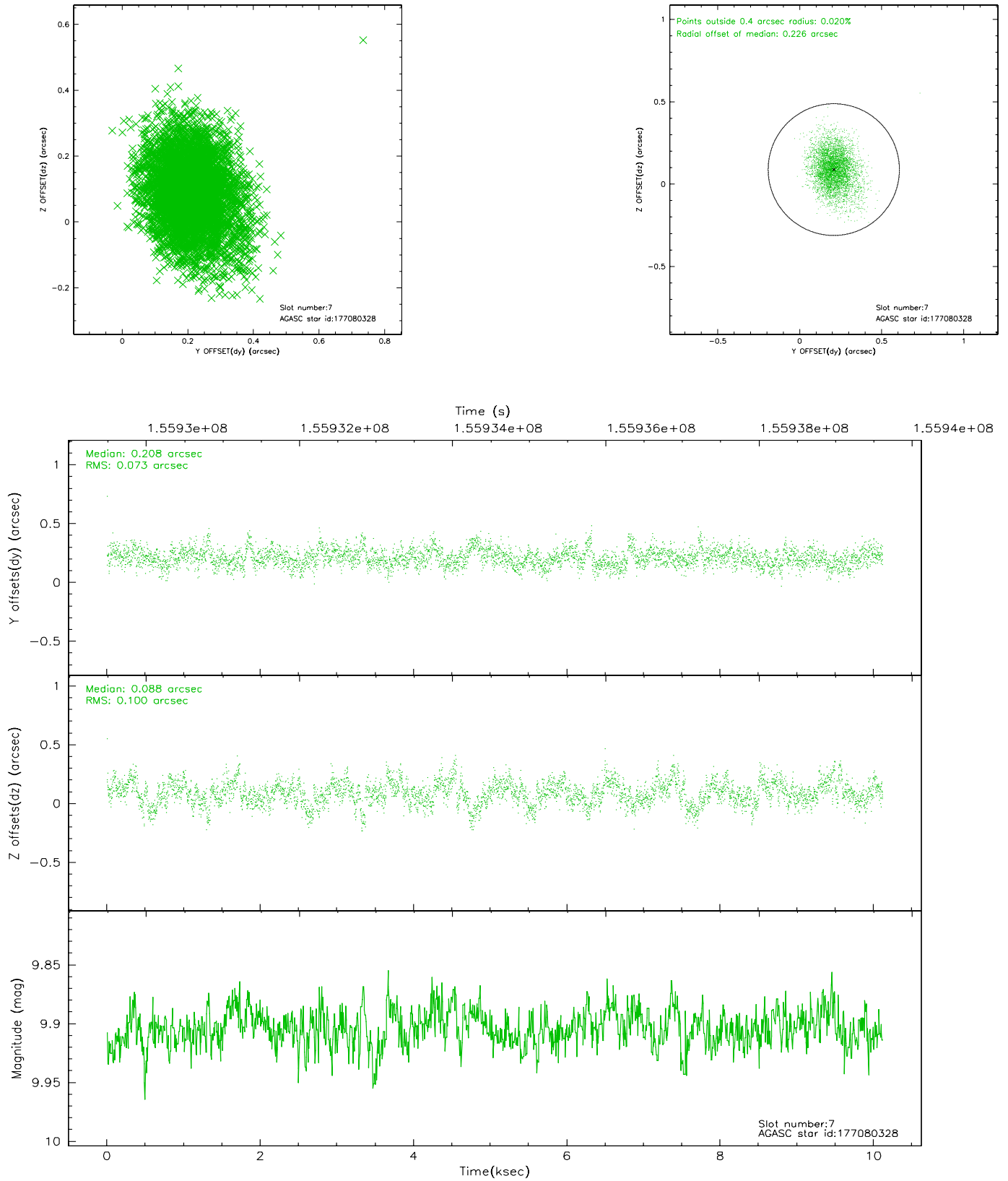
2.4.3 Slot 5



2.4.4 Slot 6

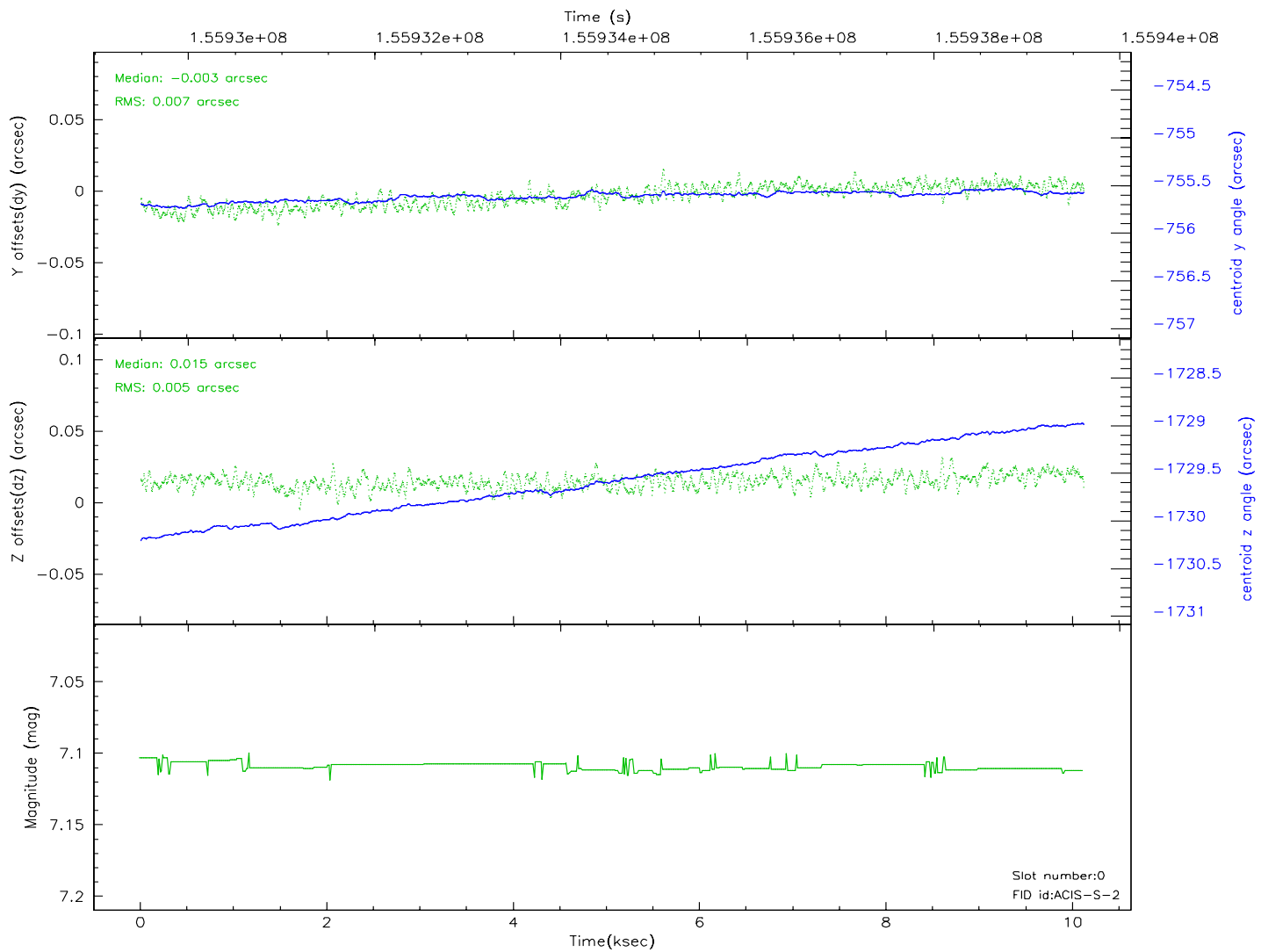
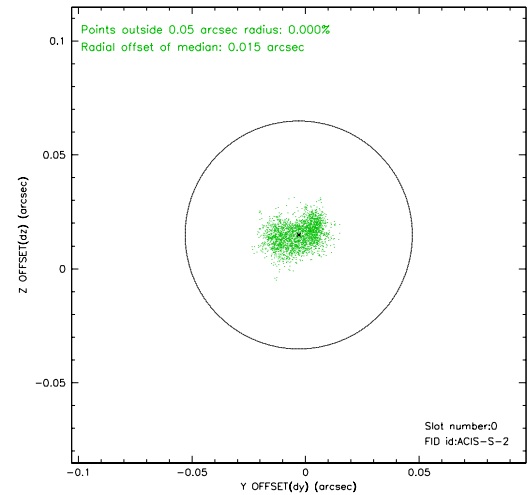
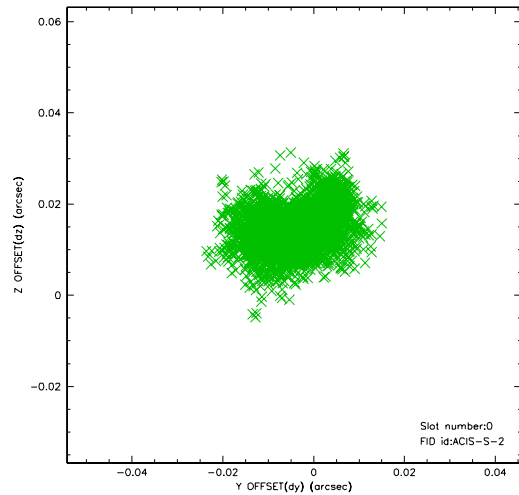


2.4.5 Slot 7

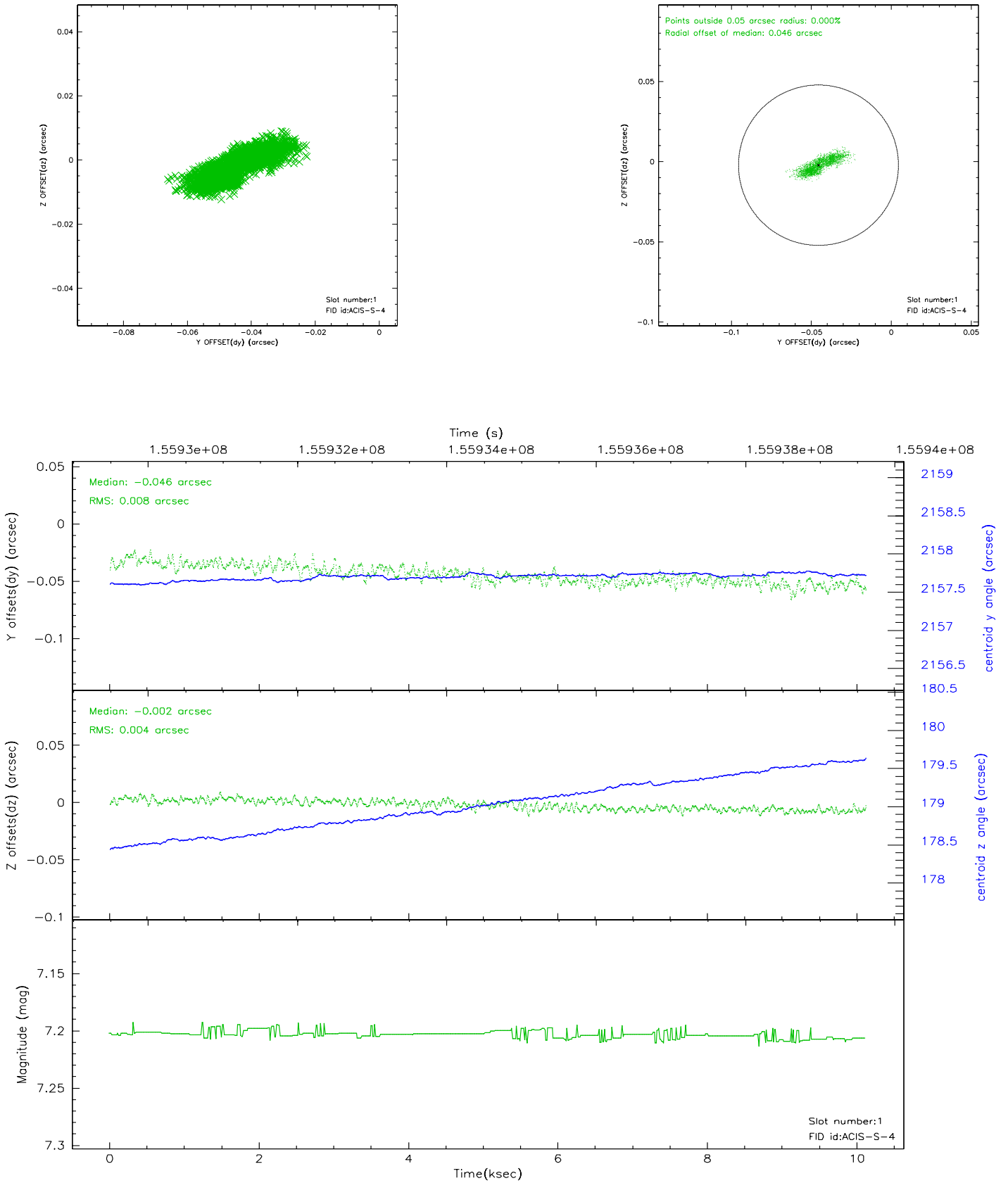


2.5 FID Slots

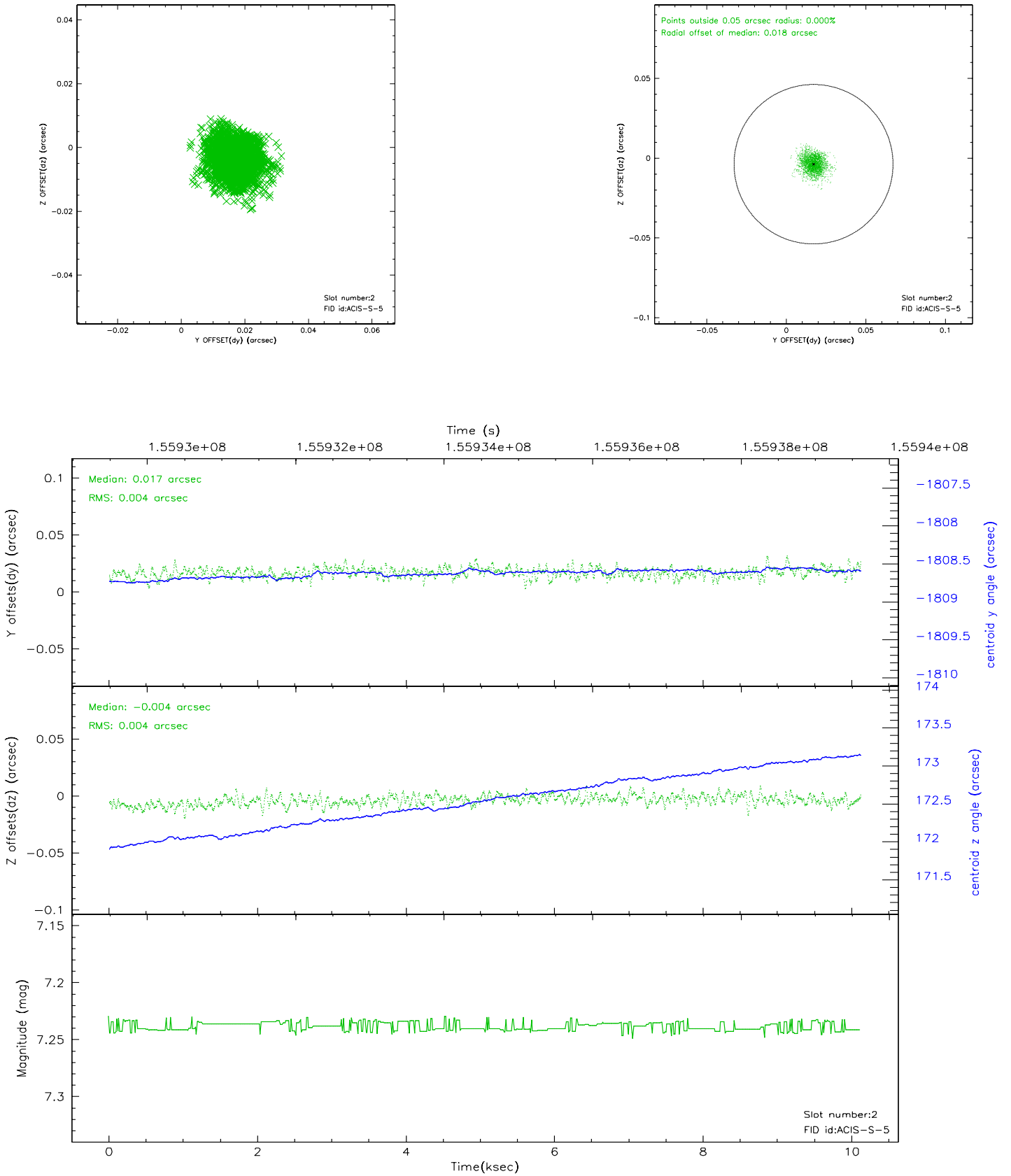
2.5.1 Slot 0



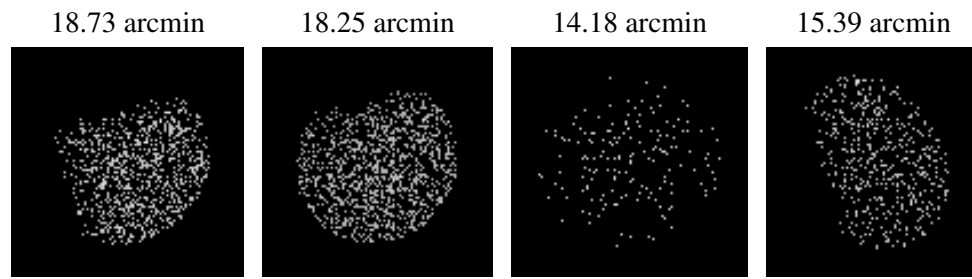
2.5.2 Slot 1



2.5.3 Slot 2



3 Point Sources



A Summary

A.1 Status

V&V Scientist	Beth Sundheim
V&V Date (YYYY-MM-DD)	2006.10.15
V&V Edition	1
V&V Disposition and Status	OK
V&V Charge Time	10.115

A.2 Comments