

# V&V Reference Report

## L2 ASCDS Version : 8.4.5

Observation 4380 - L2 Version 3  
Chandra X-Ray Center

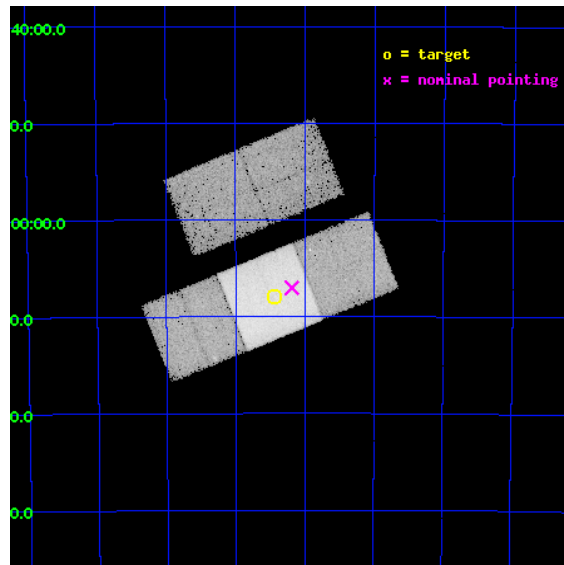
L2 Processing Date : Oct 15 2012

## Contents

<b>1</b>	<b>Front</b>	<b>2</b>
<b>2</b>	<b>OBI</b>	<b>3</b>
2.1	OBI . . . . .	3
2.1.1	Images . . . . .	3
2.1.2	Bias . . . . .	3
2.1.3	Parameters . . . . .	4
2.1.4	Events . . . . .	4
2.2	Compared Parameters . . . . .	5
2.3	Aspect . . . . .	6
2.4	Star Slots . . . . .	9
2.4.1	Slot 3 . . . . .	9
2.4.2	Slot 4 . . . . .	10
2.4.3	Slot 5 . . . . .	11
2.4.4	Slot 6 . . . . .	12
2.4.5	Slot 7 . . . . .	13
2.5	FID Slots . . . . .	14
2.5.1	Slot 0 . . . . .	14
2.5.2	Slot 1 . . . . .	15
2.5.3	Slot 2 . . . . .	16
<b>A</b>	<b>Summary</b>	<b>17</b>
A.1	Status . . . . .	17
A.2	Comments . . . . .	17

# 1 Front

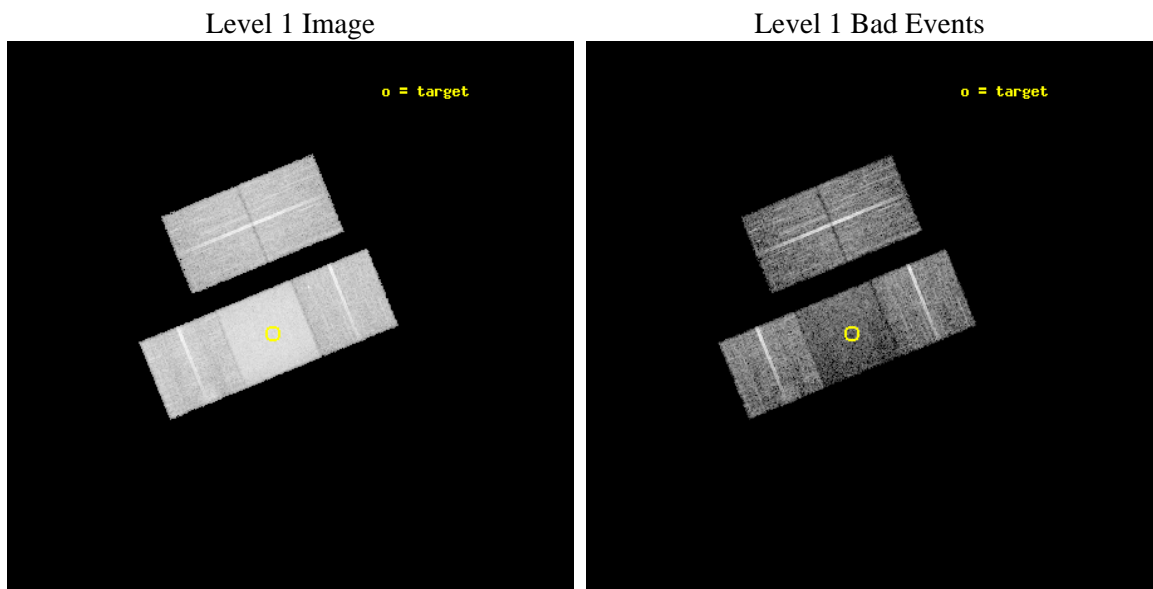
seq_num	500230	Sequence number
obs_id	4380	Observation id
title	WHERE ARE THE SUPERNOVA REMNANTS AROUND YOUNG PULSARS?	Proposal ti
observer	Prof. Bryan Gaensler	Principal investigator
object	PSR J1105-6107	Source name
dtcycle	0	&#160
cycle	P	events from which exps? Prim/Second/Both
ra_targ	166.359167	Observer's specified target RA [deg]
dec_targ	-61.131306	Observer's specified target Dec [deg]
ra_nom	166.29716302705	Nominal RA [deg]
dec_nom	-61.11717907613	Nominal Dec [deg]
roll_nom	157.76983977483	Nominal Roll [deg]
revision	3	Processing version of data
ontime	11887.975946695	Sum of GTIs [s]
livetime	11732.65078915	Livetime [s]
ontime2	11875.247945786	Sum of GTIs [s]
ontime3	11881.611916333	Sum of GTIs [s]
ontime6	11884.793936461	Sum of GTIs [s]
ontime7	11887.975946695	Sum of GTIs [s]
ontime8	11881.570856422	Sum of GTIs [s]
l2events	200501	Number of level 2 events



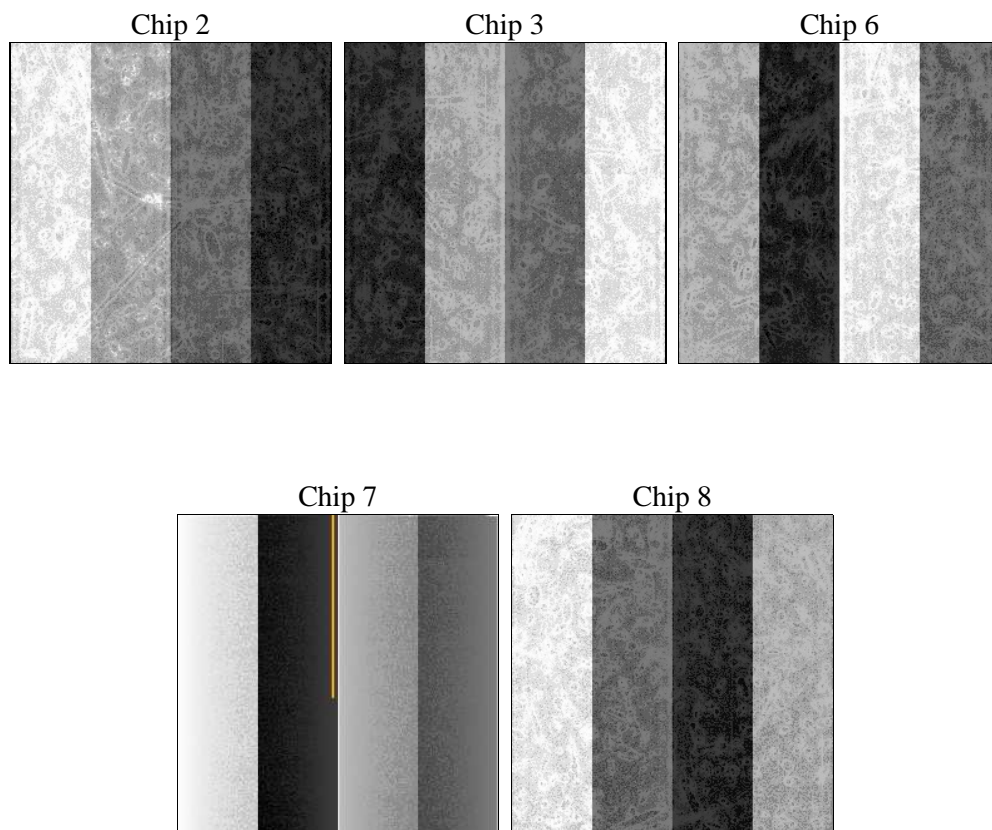
## 2 OBI

### 2.1 OBI

#### 2.1.1 Images



#### 2.1.2 Bias



### 2.1.3 Parameters

obi_num	0	Obi number	sched_exp_time	11781.538000	[s] Scheduled observation exposure time
ascdsver	8.4.5	Processing system revision	ontime	11887.975946695	Sum of GTIs [s]
caldsver	4.5.2	&#160	ontime2	11875.247945786	Sum of GTIs [s]
date	2012-10-15T12:49:15	Date and time of file creation	ontime3	11881.611916333	Sum of GTIs [s]
revision	3	Processing version of data	ontime6	11884.793936461	Sum of GTIs [s]
			ontime7	11887.975946695	Sum of GTIs [s]
			ontime8	11881.570856422	Sum of GTIs [s]
			l1events	468418	Number of level 1 events

### 2.1.4 Events

	ccd 2	ccd 3	ccd 6	ccd 7	ccd 8
level 1 events	73967	68947	82441	150450	92613
rejected events	56228	51525	55502	28993	56570
rejected %	76%	74%	67%	19%	61%

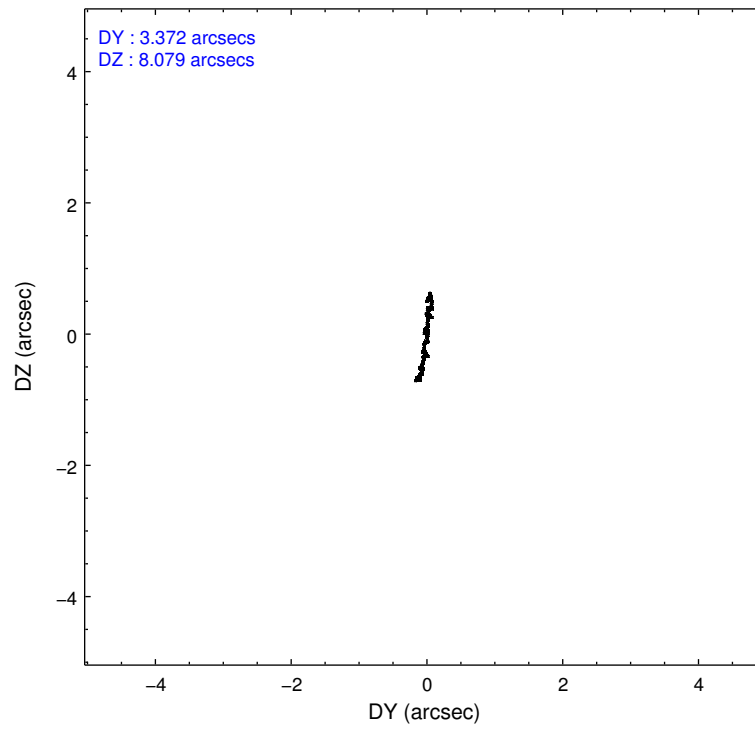
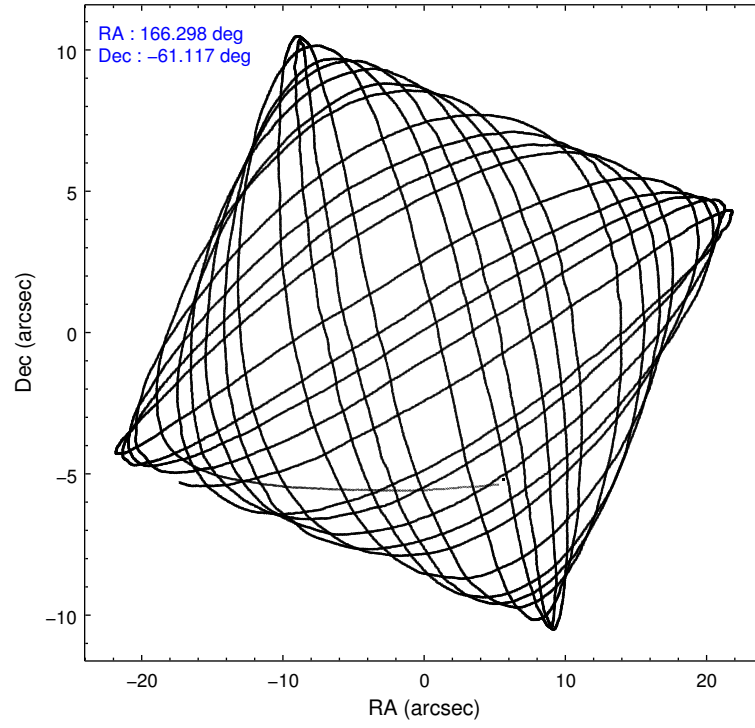
	ccd 2	ccd 3	ccd 6	ccd 7	ccd 8
grade 0 events	12413	11936	19792	13636	21453
	16%	17%	24%	9%	23%
grade 1 events	77	85	76	77	131
	0%	0%	0%	0%	0%
grade 2 events	2301	2285	3236	23256	5363
	3%	3%	3%	15%	5%
grade 3 events	918	966	1168	9995	2394
	1%	1%	1%	6%	2%
grade 4 events	934	1023	1178	10042	2241
	1%	1%	1%	6%	2%
grade 5 events	1615	1903	1990	6681	2896
	2%	2%	2%	4%	3%
grade 6 events	1175	1215	1566	64534	4595
	1%	1%	1%	42%	4%
grade 7 events	54534	49534	53435	22229	53540
	73%	71%	64%	14%	57%

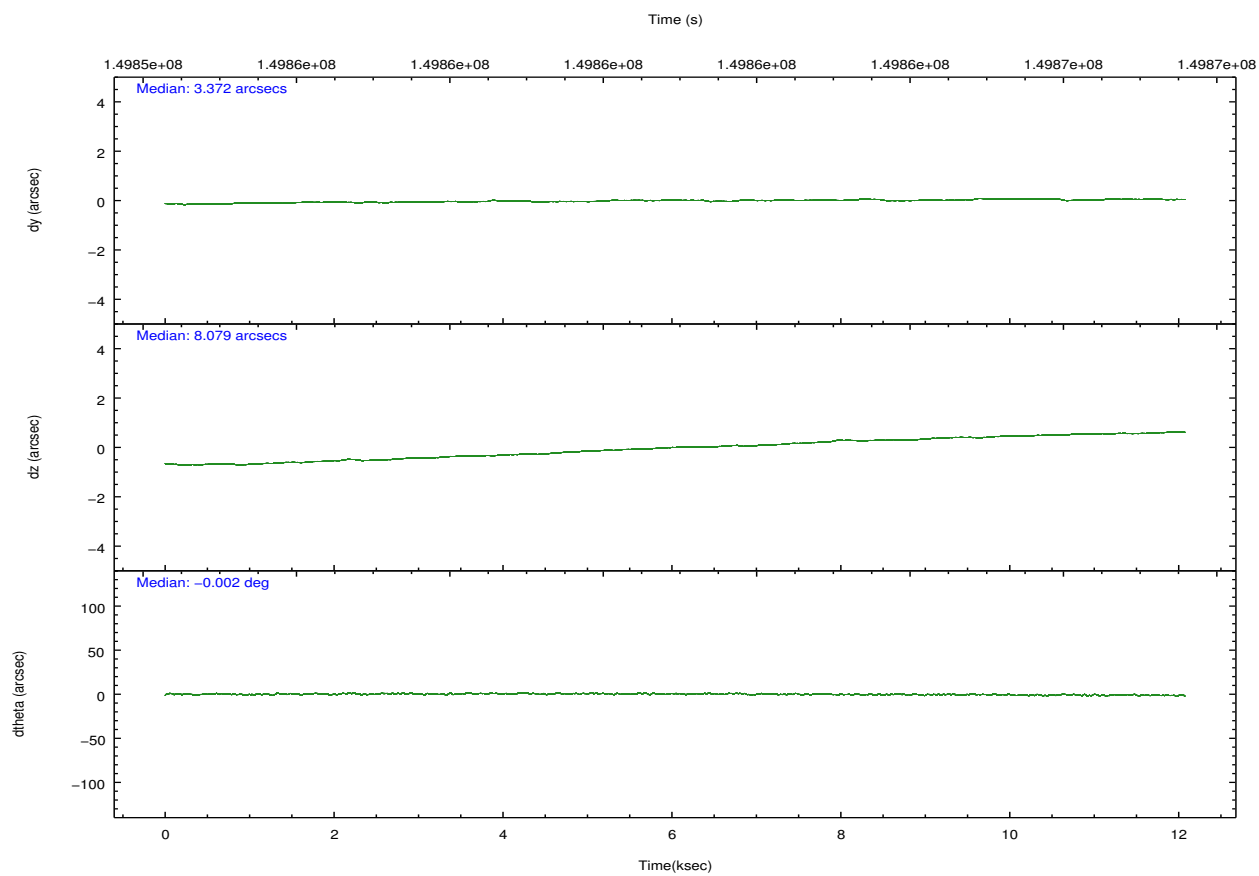
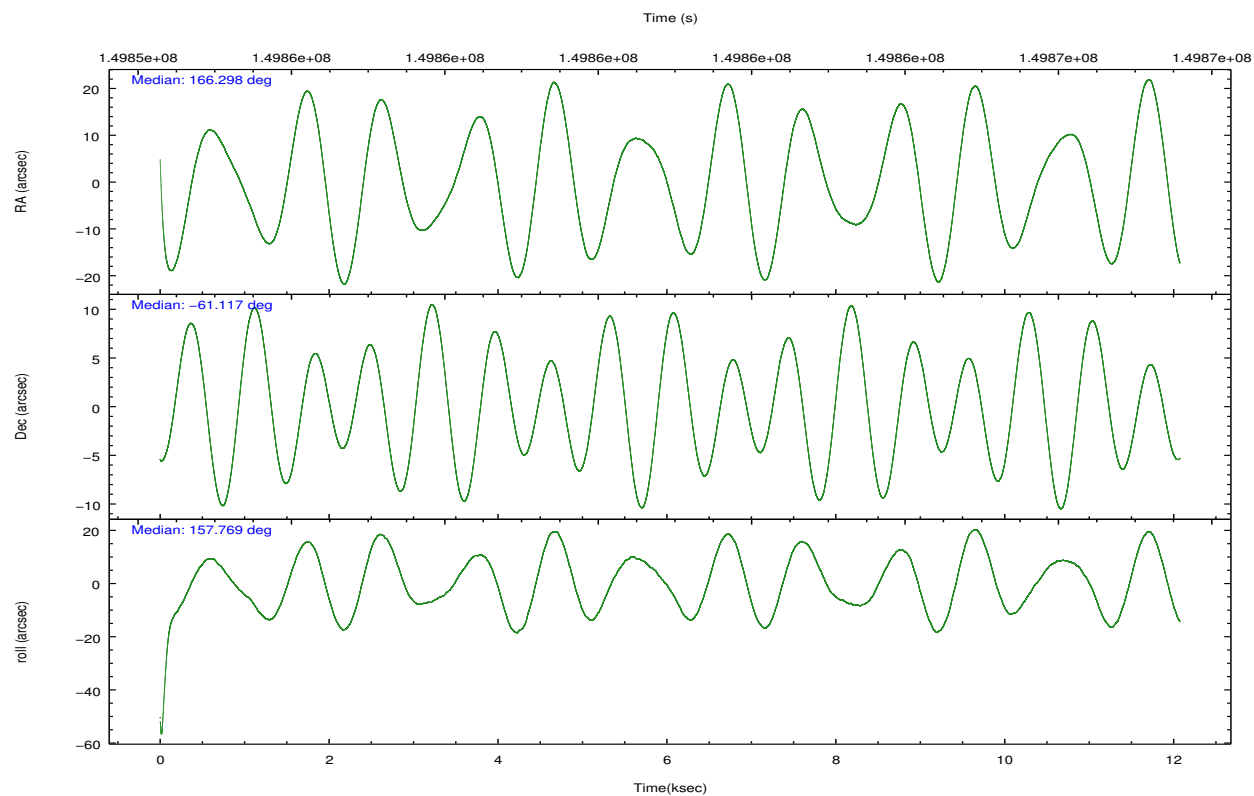


## 2.2 Compared Parameters

Parameter	Planned	Actual	Parameter	Planned	Actual
Instrument	ACIS	ACIS	Obspar format version number	7	7
Detector	ACIS-23678	ACIS-23678	Obspar file type	PREDICTED	ACTUAL
Grating	NONE	NONE	Obspar update status	NONE	UPDATED
Data mode	VFAINT	VFAINT	Number of optional ACIS chips dropped	0	0
Observation mode	POINTING	POINTING	On-chip summing requested	N	N
[deg] Pointing RA	166.352930	166.2971630270518	Subarray requested	NONE	NONE
[deg] Pointing Dec	-61.113126	-61.11717907612955	Alternating exposures requested	N	N
[deg] Pointing Roll	157.662112	157.7698397748308	[s] Primary exposure time	0.000000	3.1
[mm] SIM focus pos	-0.684267	-0.6828225247311905			
[mm] SIM defocus	0	0.001444936568705701			
[mm] SIM translation stage pos	-190.132523	-190.1400660498719			
[mm] SIM translation stage offset	0	0.00754346686406393			
[s] Observation start time (MET)	149855188.184000	149854160.36302			
Observation start date	2002-10-01T10:25:24	2002-10-01T10:09:20			
[s] Observation end time (MET)	149866970.184000	149867284.46356			
Observation end date	2002-10-01T13:41:46	2002-10-01T13:48:04			
Read mode	TIMED	TIMED			

## 2.3 Aspect



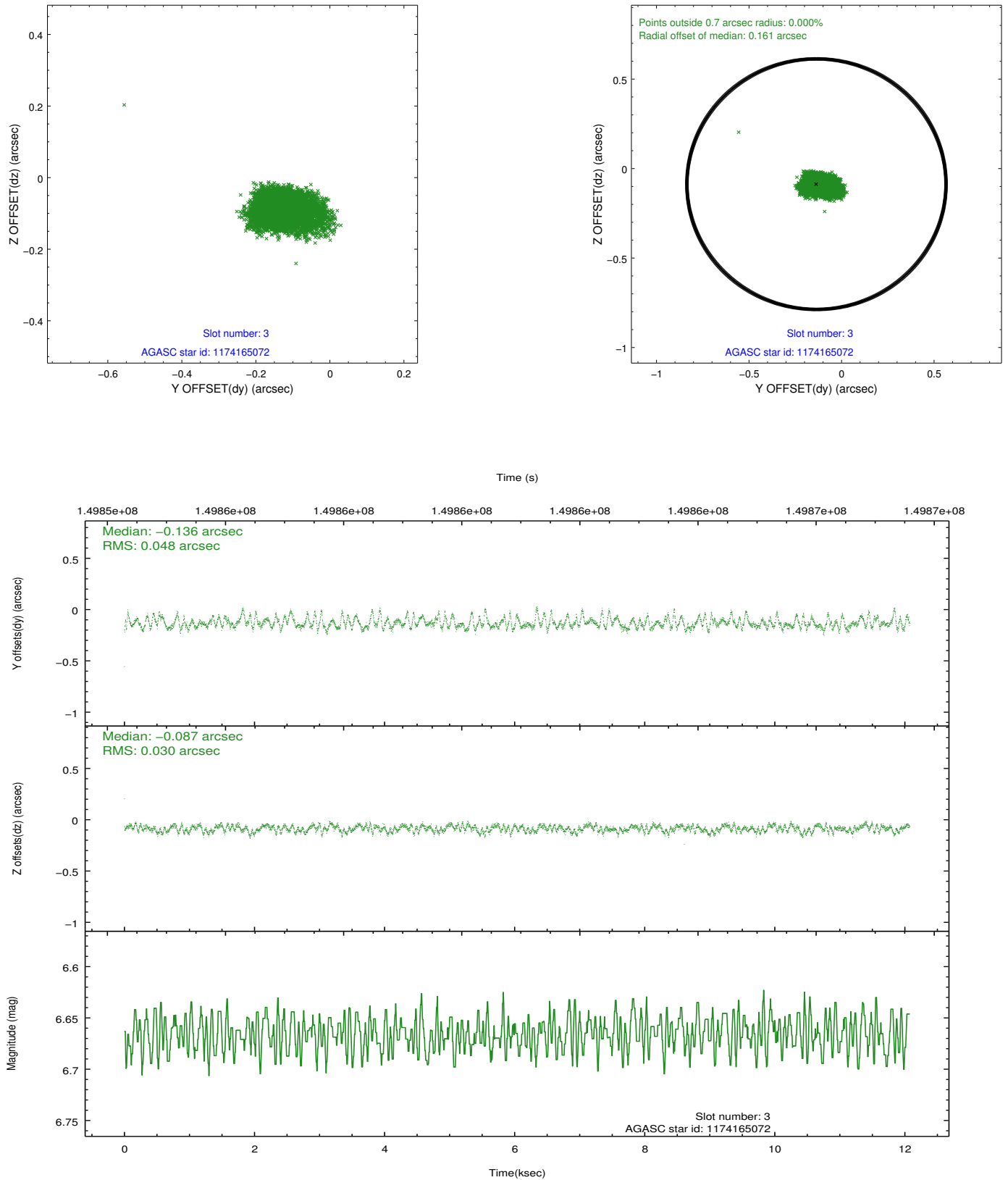


### Slot Statistics

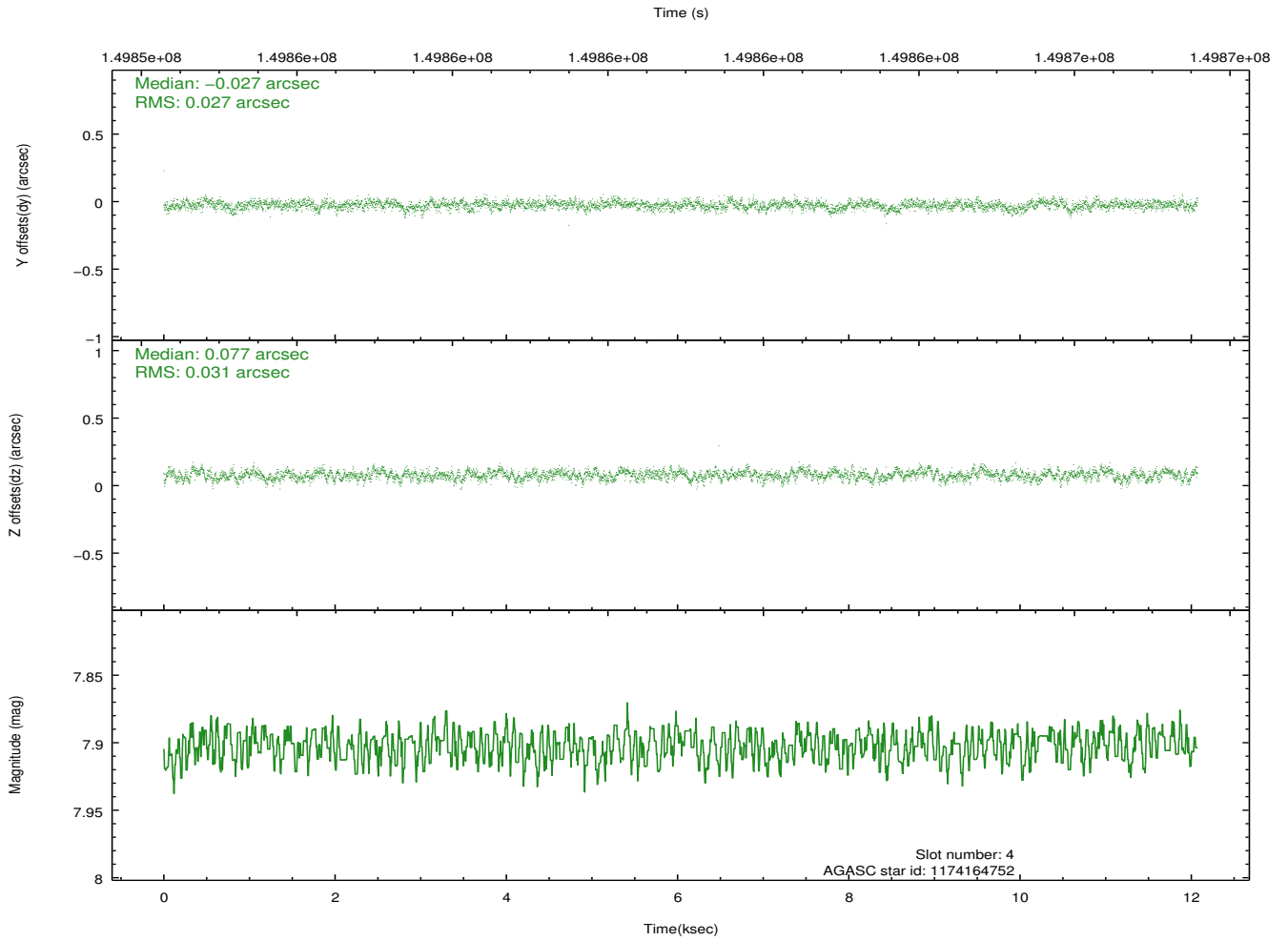
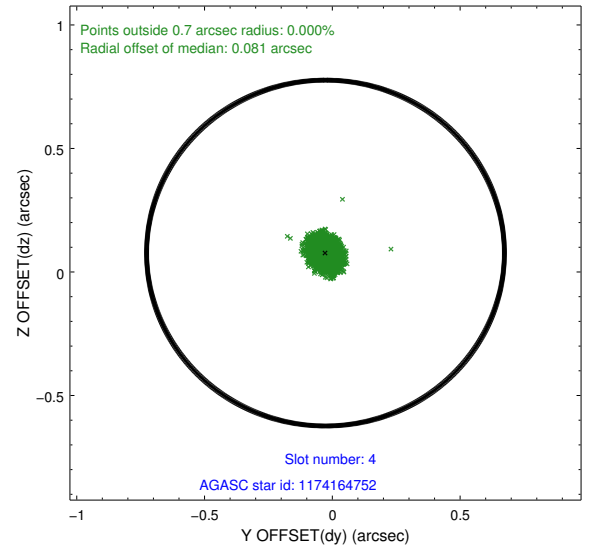
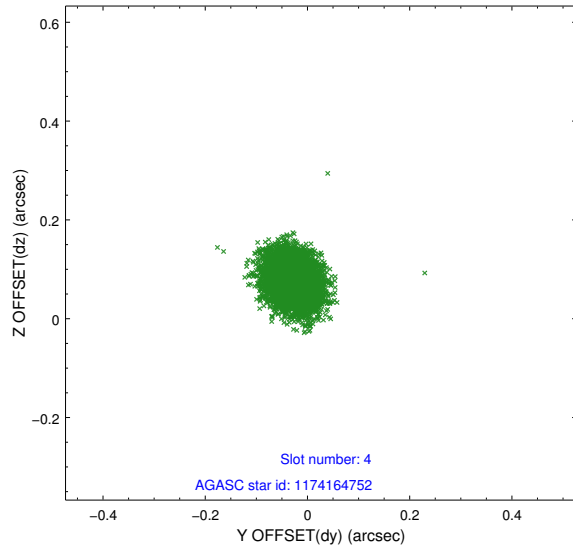
slot	status	id	mag	n_pts	med_dy	med_dz	dr1	dr2	ra	dec	mean_y	mean_z
0	FID	ACIS-S-3	7.35	2945	-0.040	-0.012	0.026	0.036	0.000000	0.000000	57.07	-1858.31
1	FID	ACIS-S-5	7.24	2945	0.017	-0.024	0.010	0.017	0.000000	0.000000	-1809.01	172.33
2	FID	ACIS-S-6	7.36	2945	-0.000	0.044	0.020	0.034	0.000000	0.000000	405.19	816.72
3	GUIDE	1174165072	6.67	5891	-0.136	-0.087	0.057	0.104	164.808363	-61.320739	2172.96	1735.25
4	GUIDE	1174164752	7.90	5890	-0.027	0.077	0.043	0.070	166.202600	-60.663321	862.09	-1395.71
5	GUIDE	1174277736	7.96	5890	0.060	-0.009	0.060	0.099	167.205882	-61.559450	-1965.65	939.59
6	GUIDE	1174172736	8.24	5887	0.059	0.008	0.051	0.080	165.291451	-61.221953	1547.77	1076.20
7	GUIDE	1174277760	8.82	5890	0.037	0.012	0.077	0.122	167.829413	-60.920065	-2134.85	-1597.00

## 2.4 Star Slots

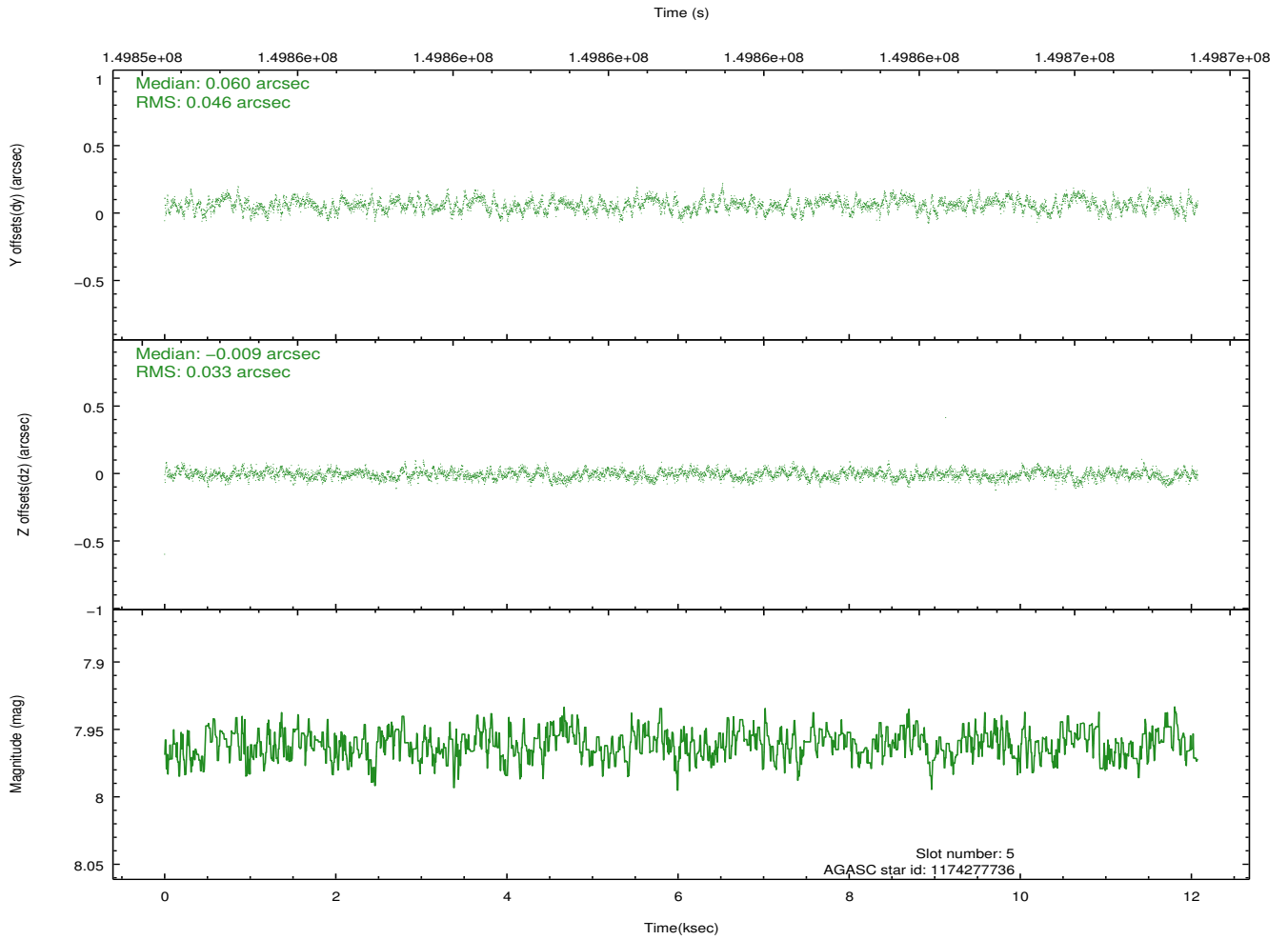
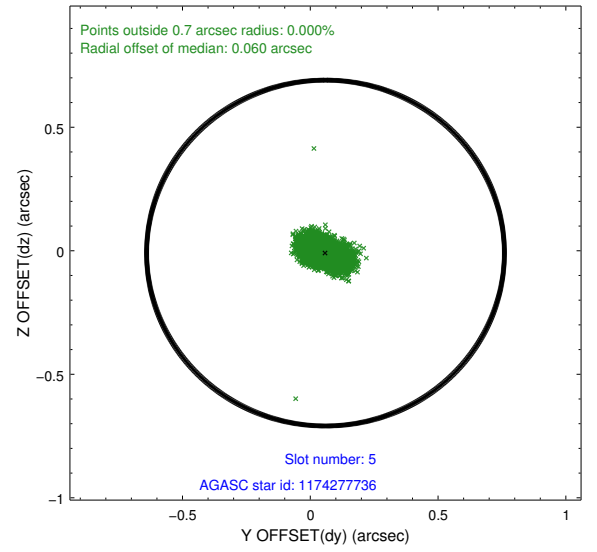
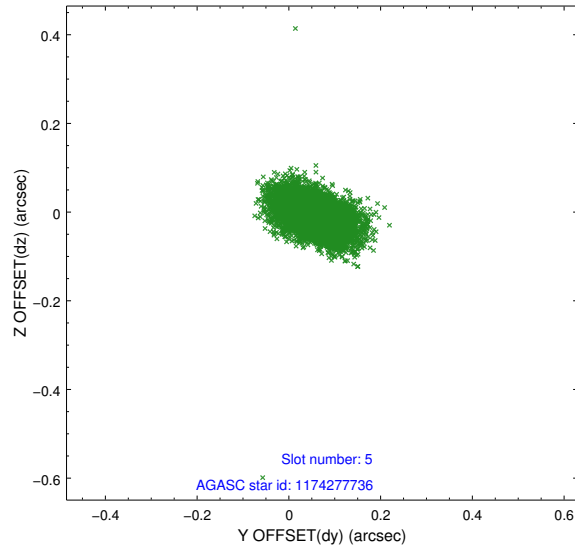
### 2.4.1 Slot 3



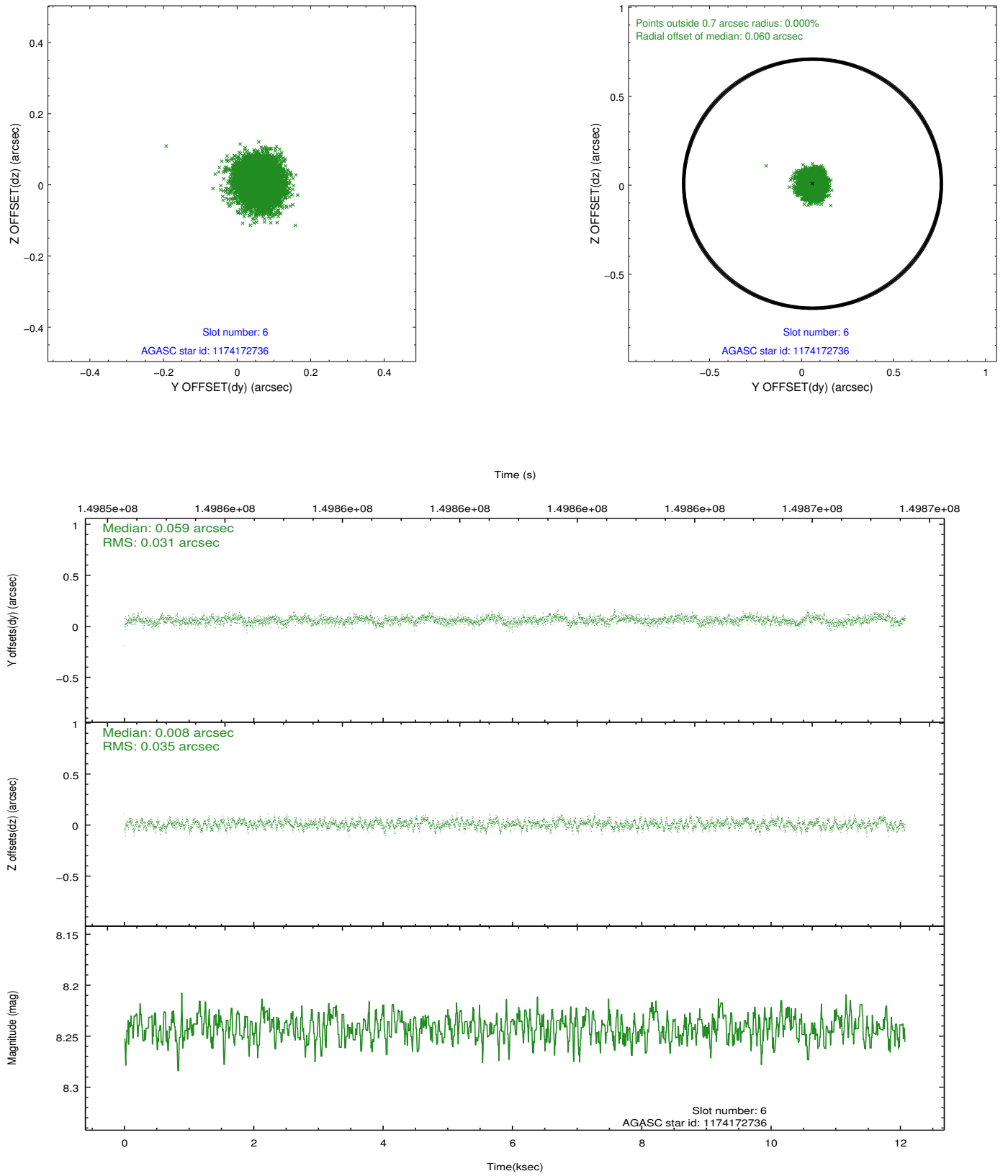
## 2.4.2 Slot 4



### 2.4.3 Slot 5

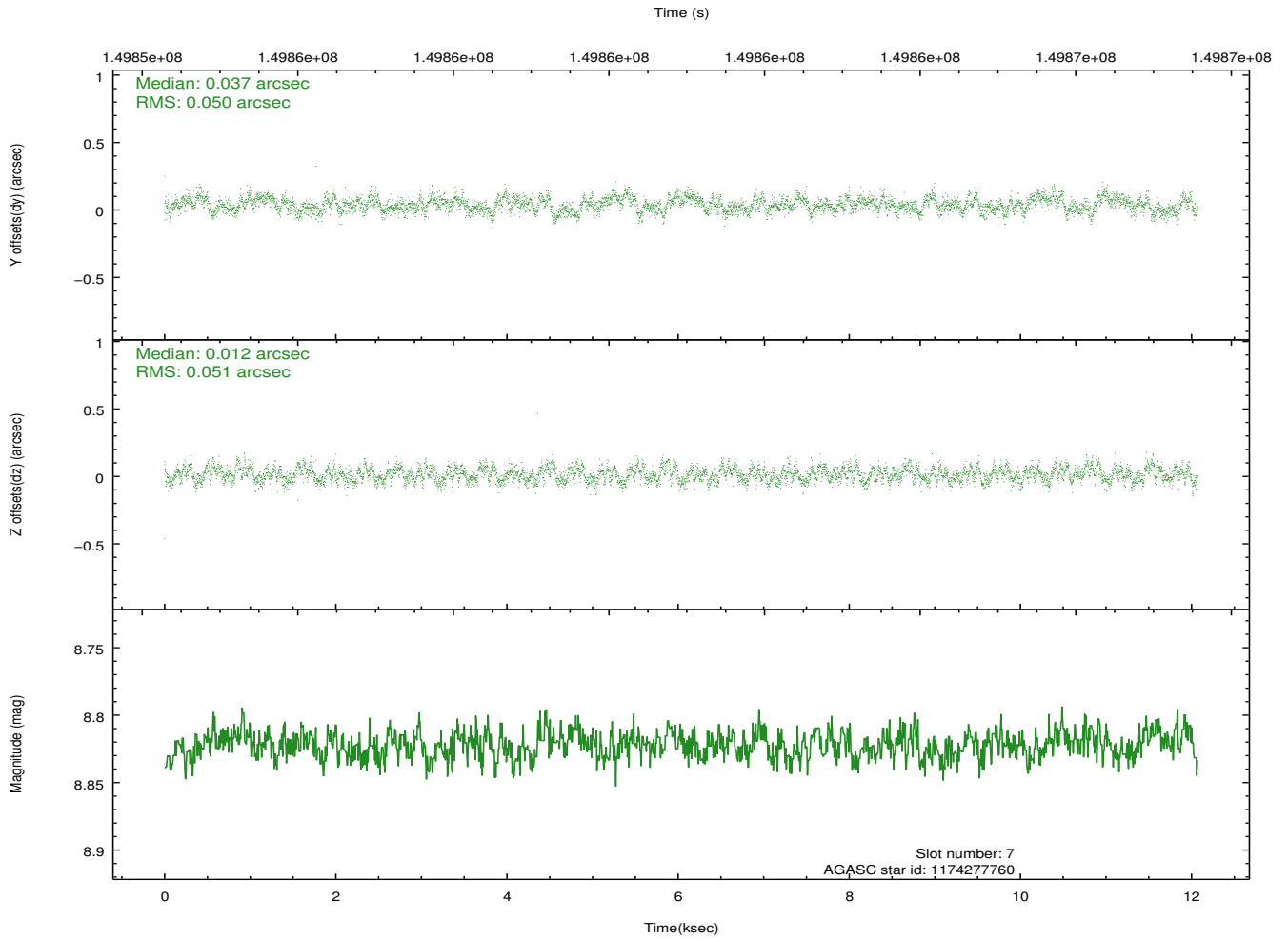
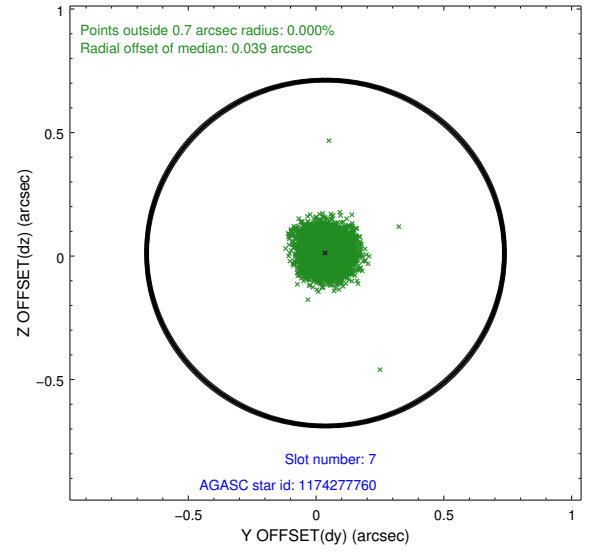
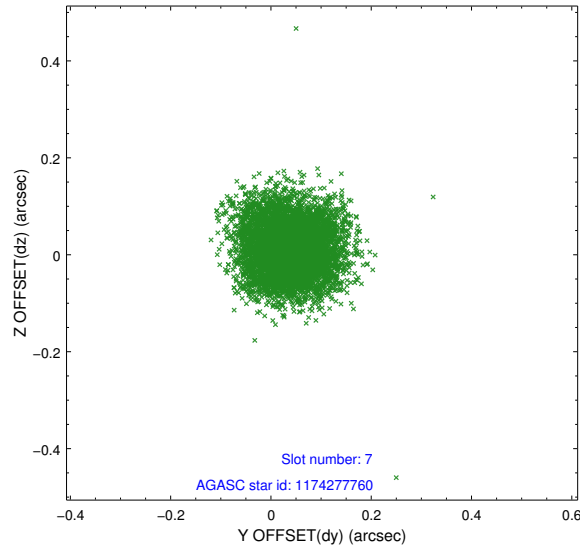


## 2.4.4 Slot 6



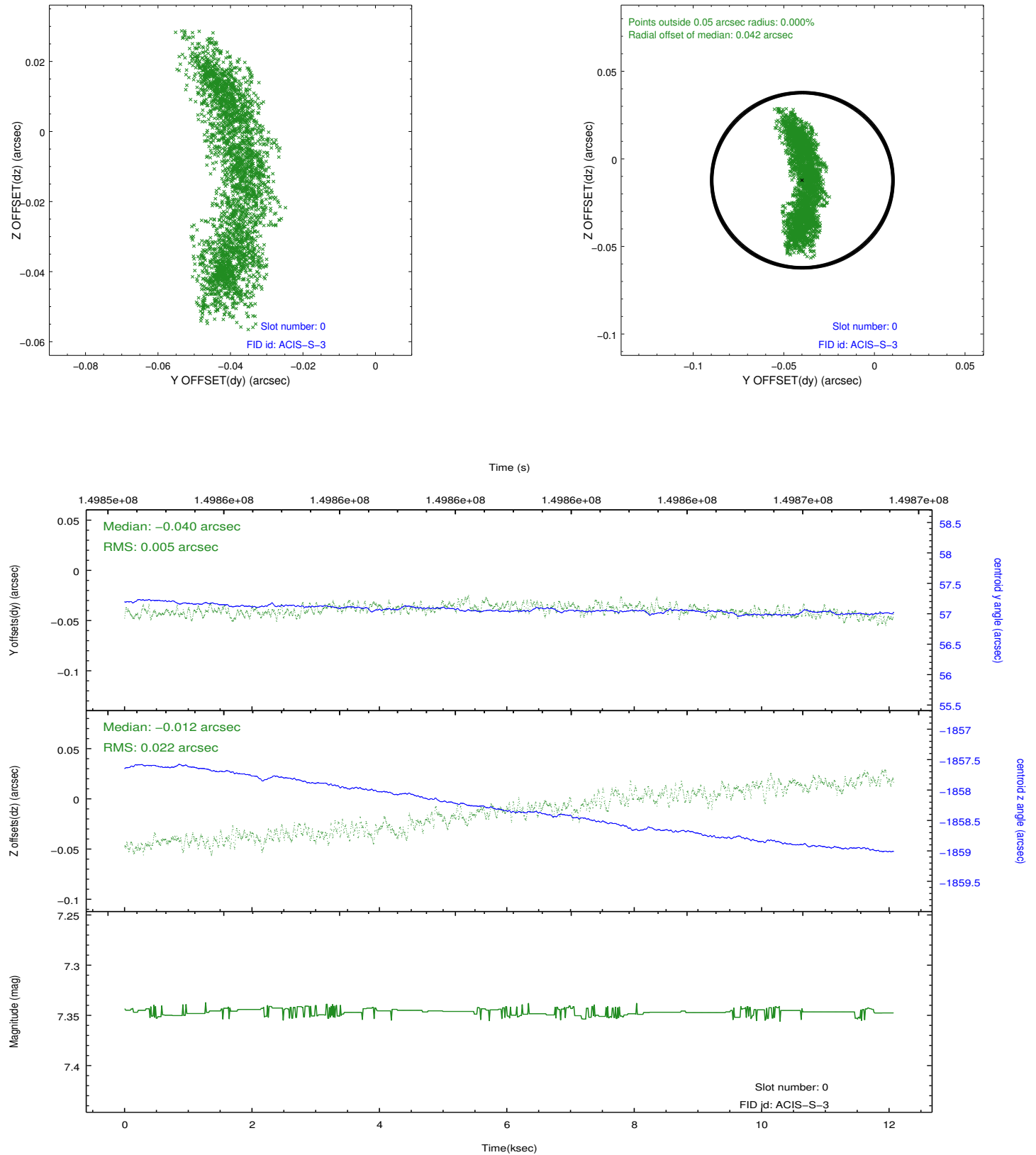


## 2.4.5 Slot 7

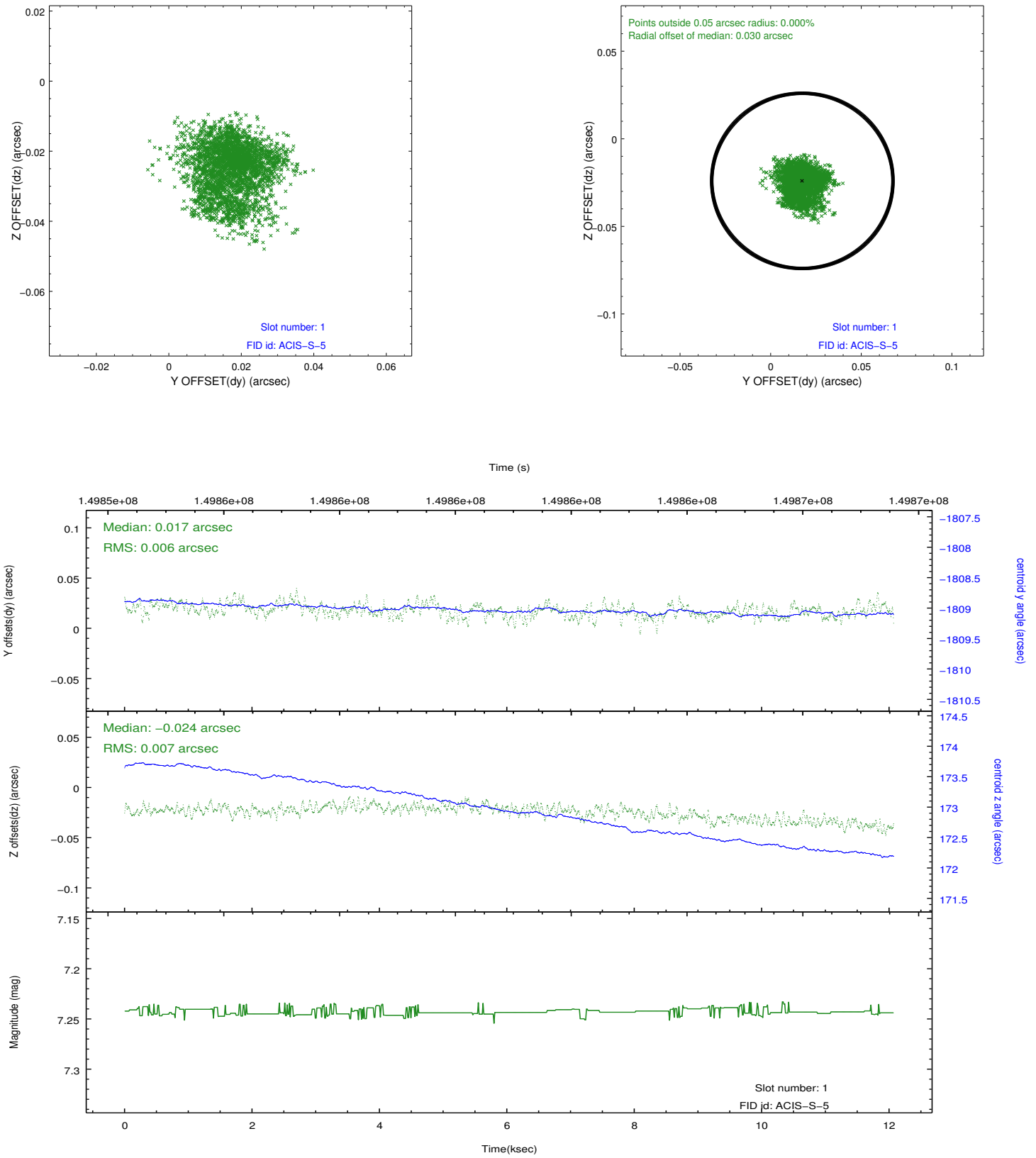


## 2.5 FID Slots

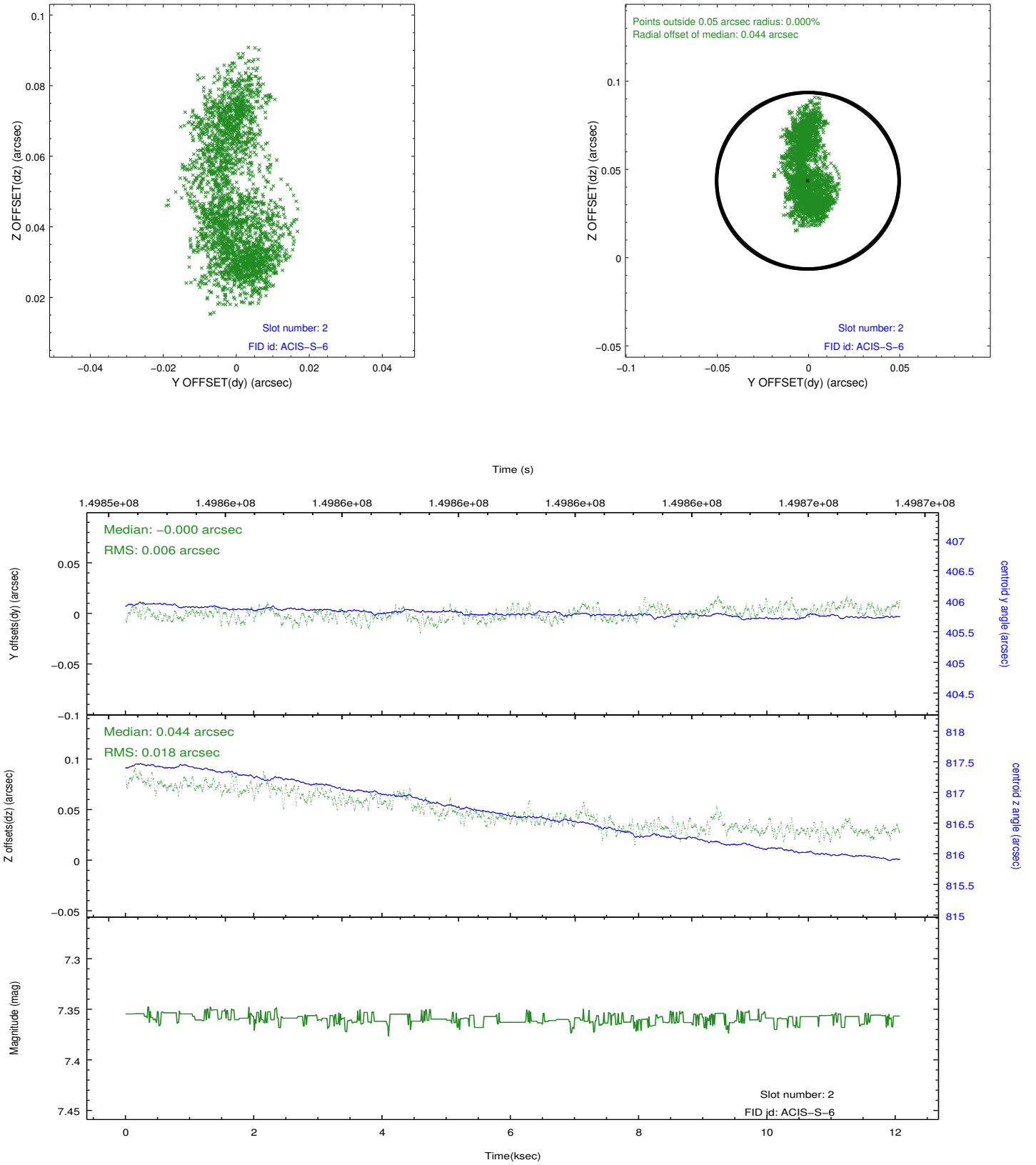
### 2.5.1 Slot 0



## 2.5.2 Slot 1



### 2.5.3 Slot 2



## **A Summary**

### **A.1 Status**

V&V Scientist	Jen Lauer
V&V Date (YYYY-MM-DD)	2012.10.25
V&V Edition	1
V&V Disposition and Status	OK
V&V Charge Time	11.888

### **A.2 Comments**