

# V&V Reference Report

## L2 ASCDS Version : 7.6.9

Observation 3673 - L2 Version 001  
Chandra X-Ray Center

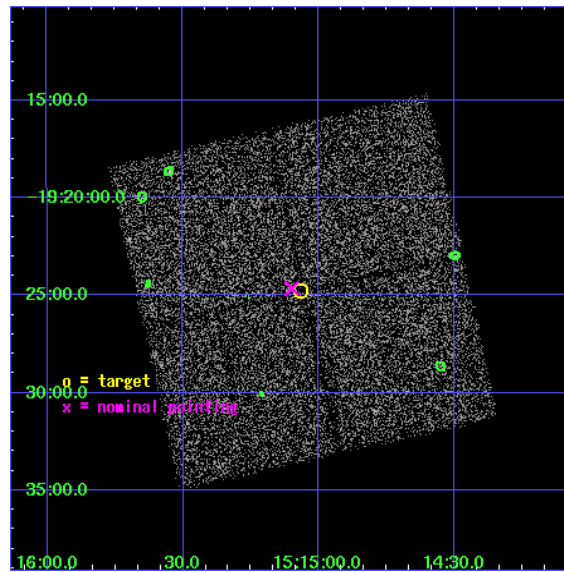
L2 Processing Date : Sep 19 2006

## Contents

<b>1</b>	<b>Front</b>	<b>2</b>
<b>2</b>	<b>OBI</b>	<b>3</b>
2.1	OBI . . . . .	3
2.1.1	Images . . . . .	3
2.1.2	Bias . . . . .	3
2.1.3	Parameters . . . . .	4
2.1.4	Events . . . . .	4
2.2	Compared Parameters . . . . .	5
2.3	Aspect . . . . .	6
2.4	Star Slots . . . . .	9
2.4.1	Slot 3 . . . . .	9
2.4.2	Slot 4 . . . . .	10
2.4.3	Slot 5 . . . . .	11
2.4.4	Slot 6 . . . . .	12
2.4.5	Slot 7 . . . . .	13
2.5	FID Slots . . . . .	14
2.5.1	Slot 0 . . . . .	14
2.5.2	Slot 1 . . . . .	15
2.5.3	Slot 2 . . . . .	16
<b>3</b>	<b>Point Sources</b>	<b>17</b>
<b>A</b>	<b>Summary</b>	<b>18</b>
A.1	Status . . . . .	18
A.2	Comments . . . . .	18

# 1 Front

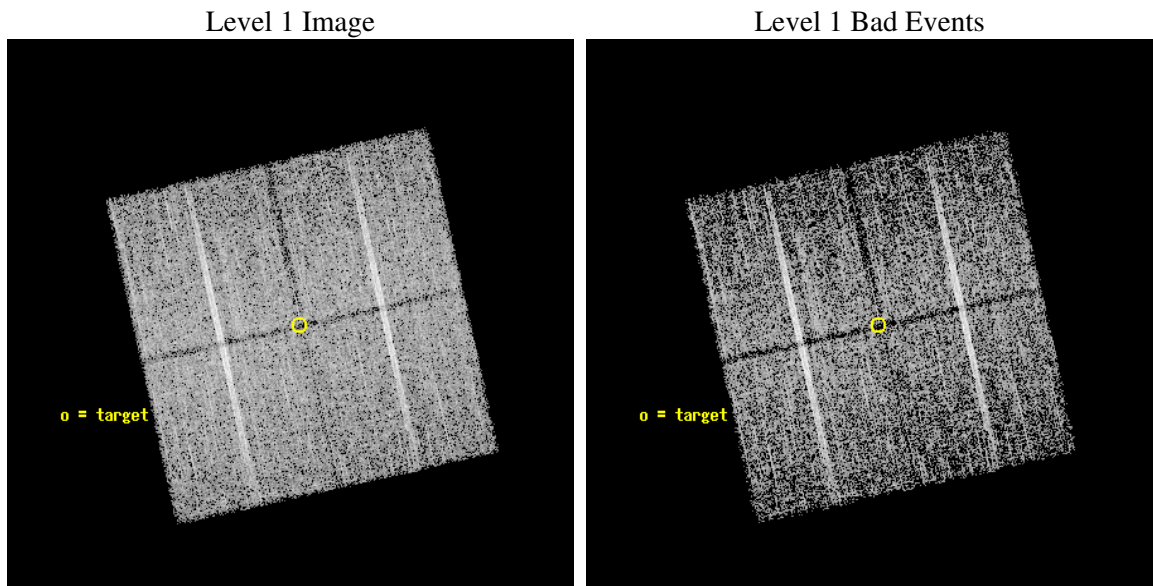
seq_num	500274
obs_id	3673
title	LOCALIZATION OF OPTICALLY-DARK GAMMA-RAY BURSTS BY CHANDRA AND HST
observer	Dr. george Ricker
object	GRB020531
dtcycle	0
cycle	P
ra_targ	228.767083
dec_targ	-19.413472
ra_nom	228.77473459933
dec_nom	-19.410962311534
roll_nom	257.47159666136
revision	3
ontime	10195.899980396
livetime	10062.68304104
ontime0	10192.759010166
ontime1	10195.899980396
ontime2	10195.899980396
ontime3	10195.899980396
l2events	26740



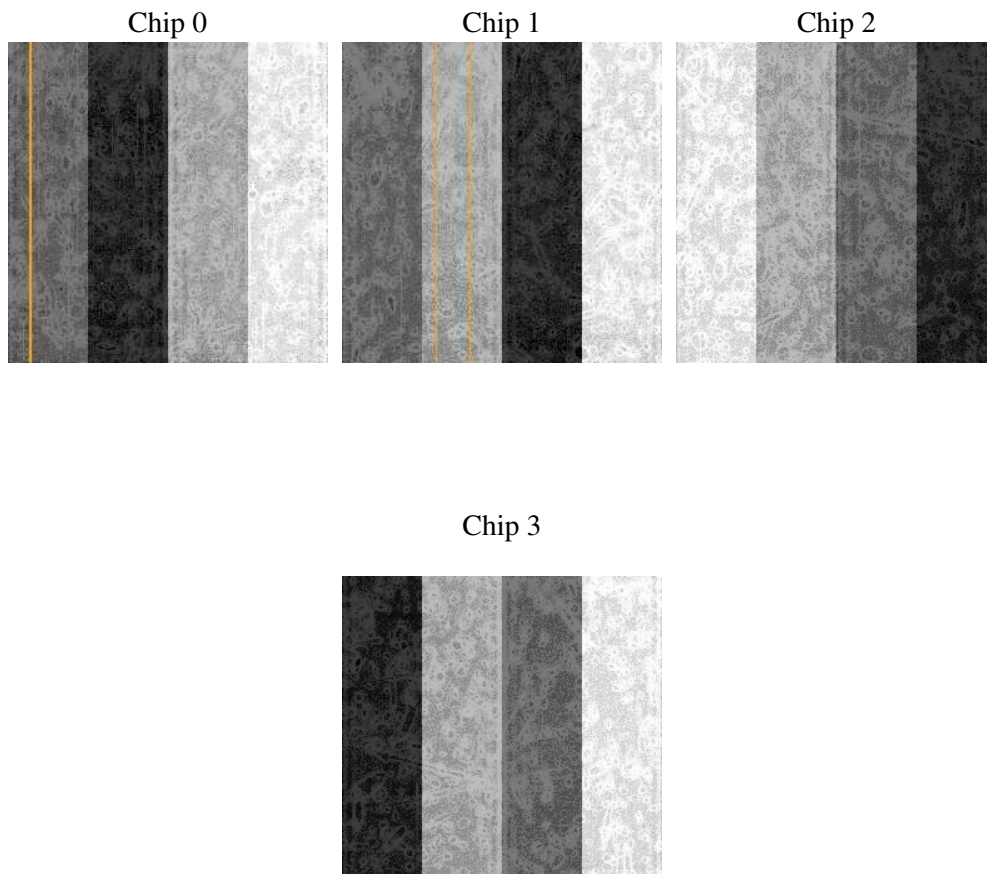
## 2 OBI

### 2.1 OBI

#### 2.1.1 Images



#### 2.1.2 Bias



### 2.1.3 Parameters

obi_num	0
ascdsver	7.6.9
caldbver	3.2.3
date	2006-09-19T09:13:45
revision	3

sched_exp_time	10000.000000
ontime	10261.660829902
ontime0	10258.519859672
ontime1	10261.660829902
ontime2	10261.660829902
ontime3	10261.660829902
l1events	248758

### 2.1.4 Events

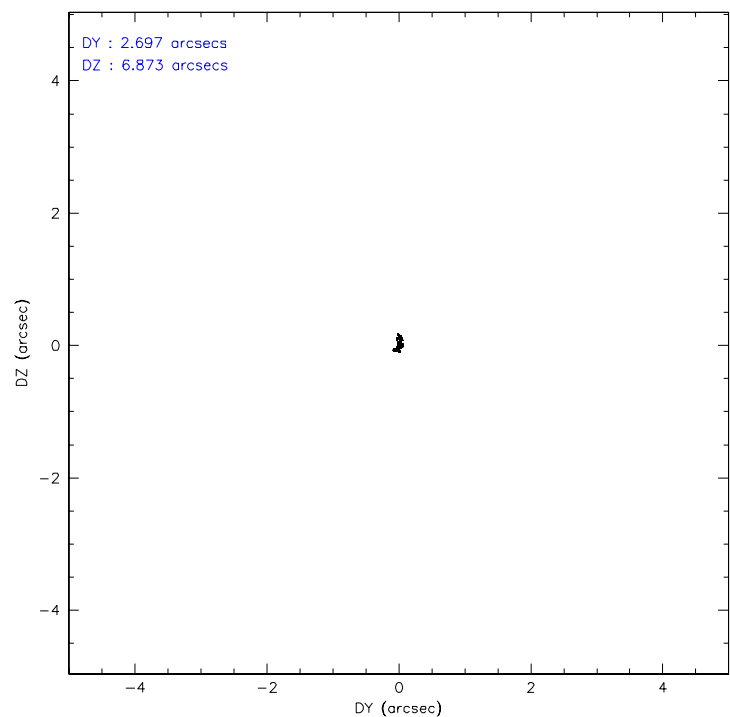
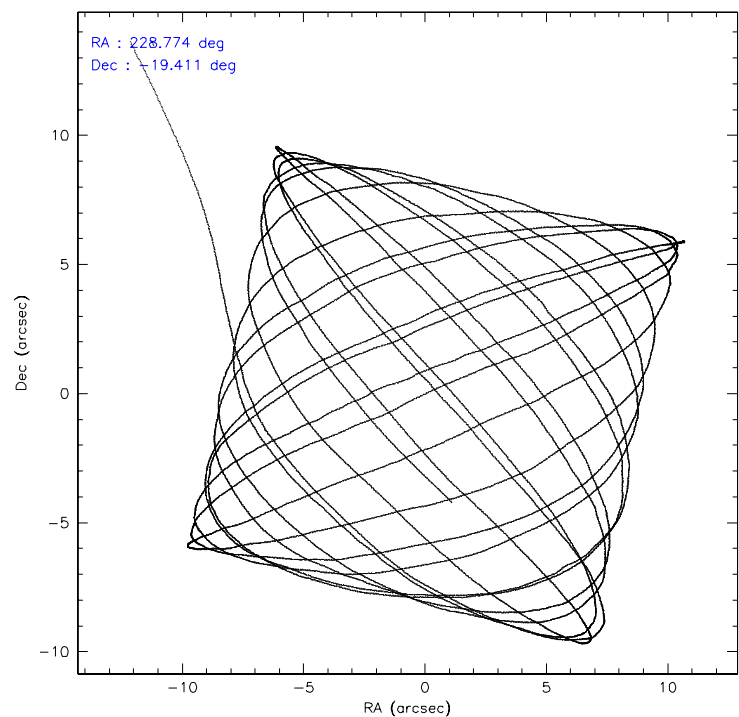
	<b>ccd 0</b>	<b>ccd 1</b>	<b>ccd 2</b>	<b>ccd 3</b>
level 1 events	58646	61101	64342	64669
rejected events	50896	52870	56632	57093
rejected %	86%	86%	88%	88%

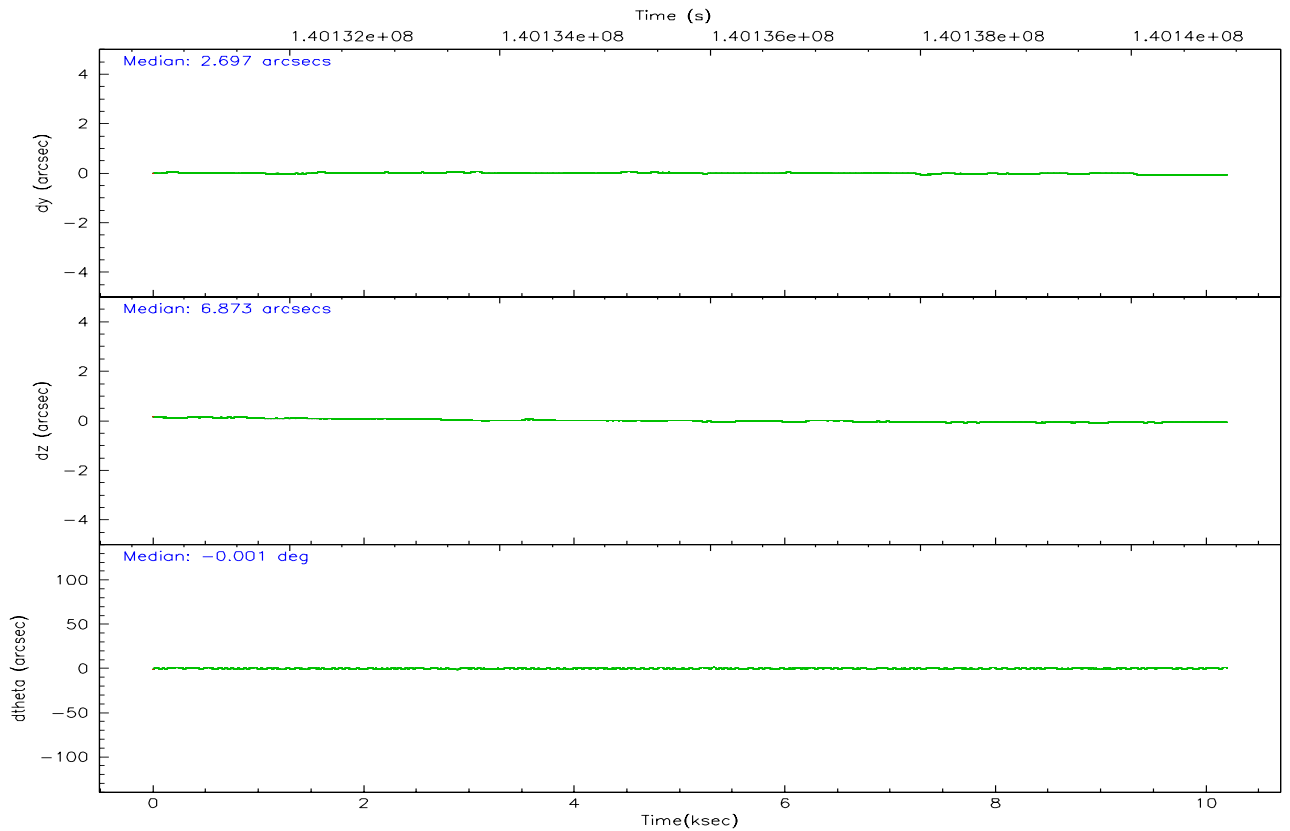
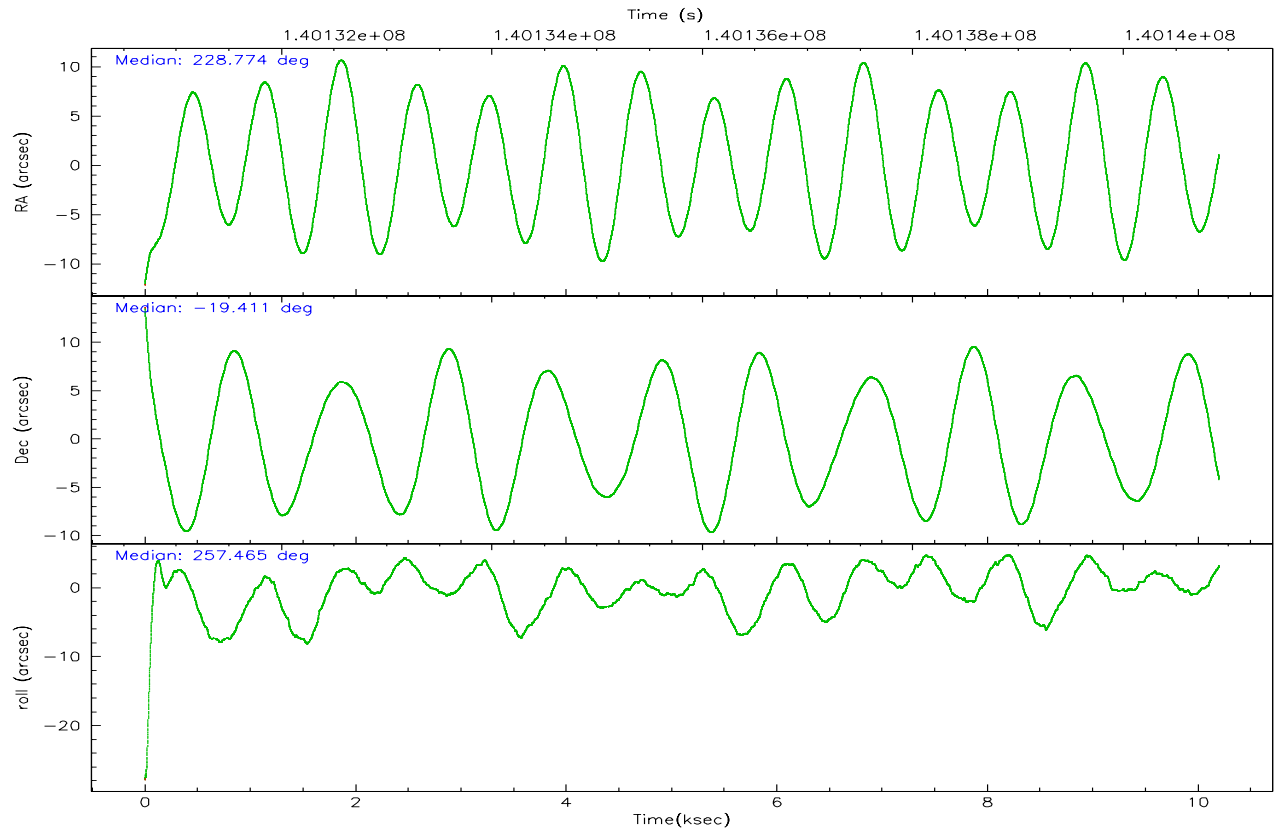
	<b>ccd 0</b>	<b>ccd 1</b>	<b>ccd 2</b>	<b>ccd 3</b>
grade 0 events	3350	3402	3449	3399
	5%	5%	5%	5%
grade 1 events	39	29	34	36
	0%	0%	0%	0%
grade 2 events	1644	1706	1726	1495
	2%	2%	2%	2%
grade 3 events	761	851	680	696
	1%	1%	1%	1%
grade 4 events	668	802	655	716
	1%	1%	1%	1%
grade 5 events	2418	2607	2224	2601
	4%	4%	3%	4%
grade 6 events	1379	1542	1247	1320
	2%	2%	1%	2%
grade 7 events	48387	50162	54327	54406
	82%	82%	84%	84%

## 2.2 Compared Parameters

Parameter	Planned	Actual	Parameter	Planned	Actual
Instrument	ACIS	ACIS	Obspar format version number	6	6
Detector	ACIS-0123	ACIS-0123	Obspar file type	PREDICTED	ACTUAL
Grating	NONE	NONE	Obspar update status	NONE	UPDATED
Data mode	VFAINT	VFAINT	Number of optional ACIS chips dropped	0	0
Observation mode	POINTING	POINTING	On-chip summing requested	N	N
Pointing RA	228.765972	228.7747345993338	Subarray requested	NONE	NONE
Pointing Dec	-19.384869	-19.41096231153417	Alternating exposures requested	N	N
Pointing Roll	257.260040	257.4715966613647	Primary exposure time	0.000000	3.1
SIM focus pos (mm)	-0.782348	-0.7809083437167272			
SIM defocus (mm)	0	0.001439871863259334			
SIM translation stage pos (mm)	-233.592463	-233.5874344608287			
SIM translation stage offset (mm)	0	-0.005018542100998502			
Observation start time	140130906.184000	140129940.37526			
Observation start date	2002-06-10T21:14:02	2002-06-10T20:59:00			
Observation end time	140140906.184000	140141620.76324			
Observation end date	2002-06-11T00:00:42	2002-06-11T00:13:40			
Read mode	TIMED	TIMED			

## 2.3 Aspect





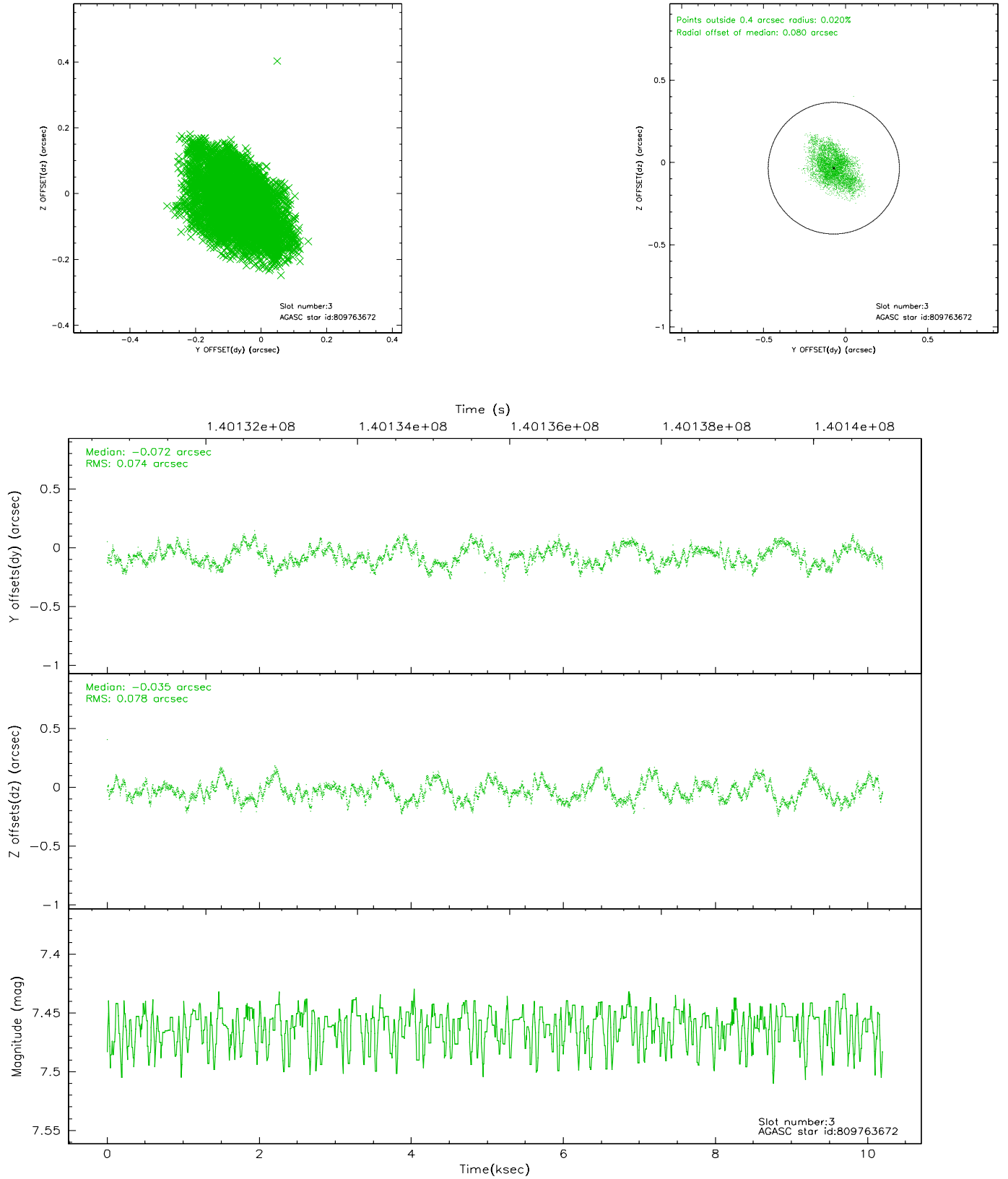
### Slot Statistics

slot	status	id	mag	n_pts	med_dy	med_dz	dr1	dr2	ra	dec	mean_y	mean_z
0	FID	ACIS-I-1	7.25	2489	-0.017	0.039	0.006	0.011	0.000000	0.000000	937.07	-830.25
1	FID	ACIS-I-5	7.24	2489	-0.027	0.045	0.006	0.010	0.000000	0.000000	-1810.72	1067.04
2	FID	ACIS-I-6	7.26	2489	-0.047	-0.014	0.007	0.012	0.000000	0.000000	402.08	1712.03
3	GUIDE	809763672	7.46	4975	-0.072	-0.035	0.117	0.187	228.584213	-18.953335	-1378.63	-945.23
4	GUIDE	809770256	8.63	4973	0.112	0.001	0.100	0.155	228.622612	-19.243146	-390.34	-586.96
5	GUIDE	809765760	8.74	4976	0.096	0.048	0.108	0.176	229.188364	-20.001489	1851.59	1885.04
6	GUIDE	809763472	9.69	4972	-0.102	0.113	0.343	0.513	229.511835	-18.885739	-2307.81	2084.39
7	GUIDE	809763216	9.38	4968	-0.046	-0.115	0.137	0.221	228.184095	-18.817707	-1551.49	-2382.34

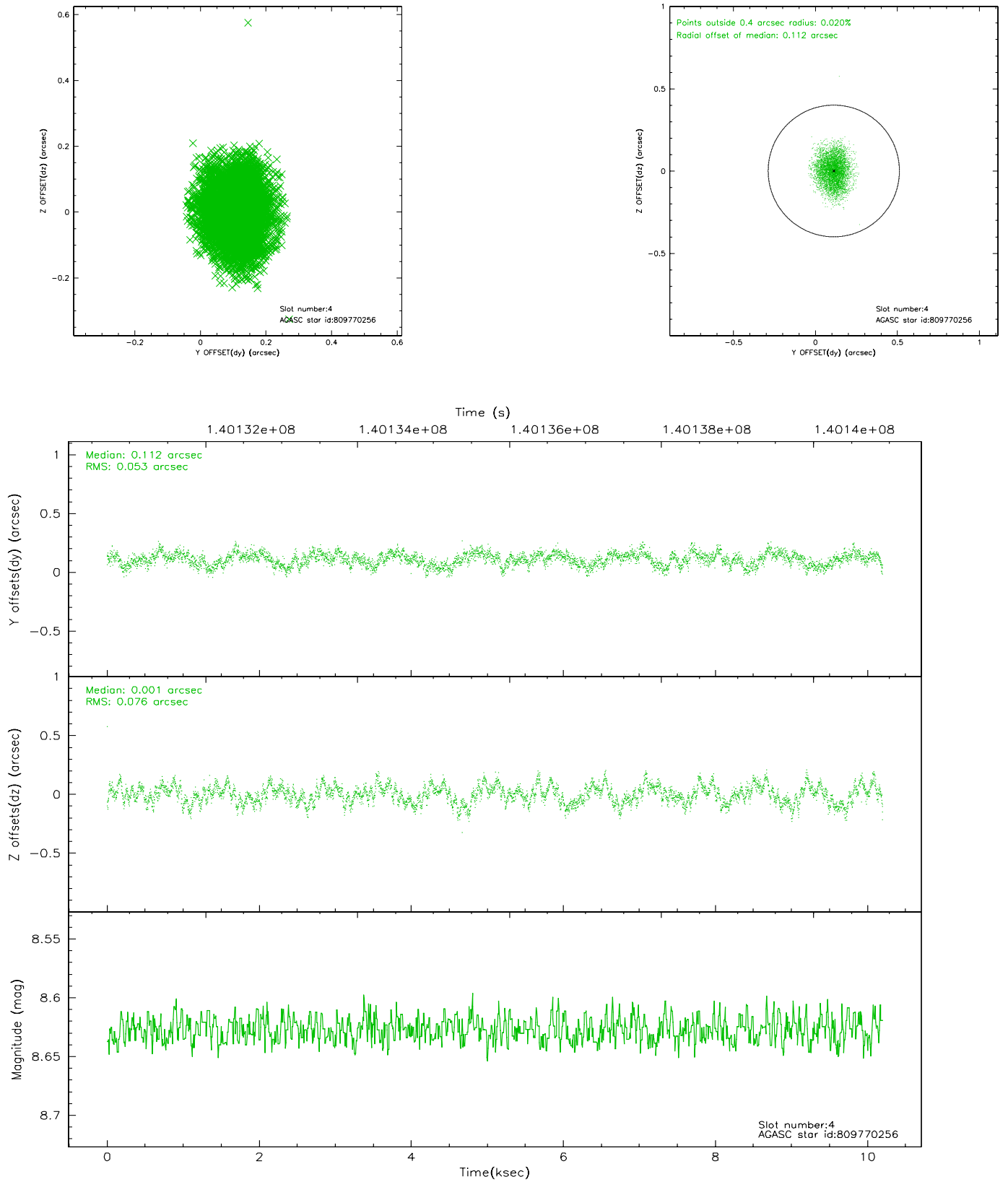


## 2.4 Star Slots

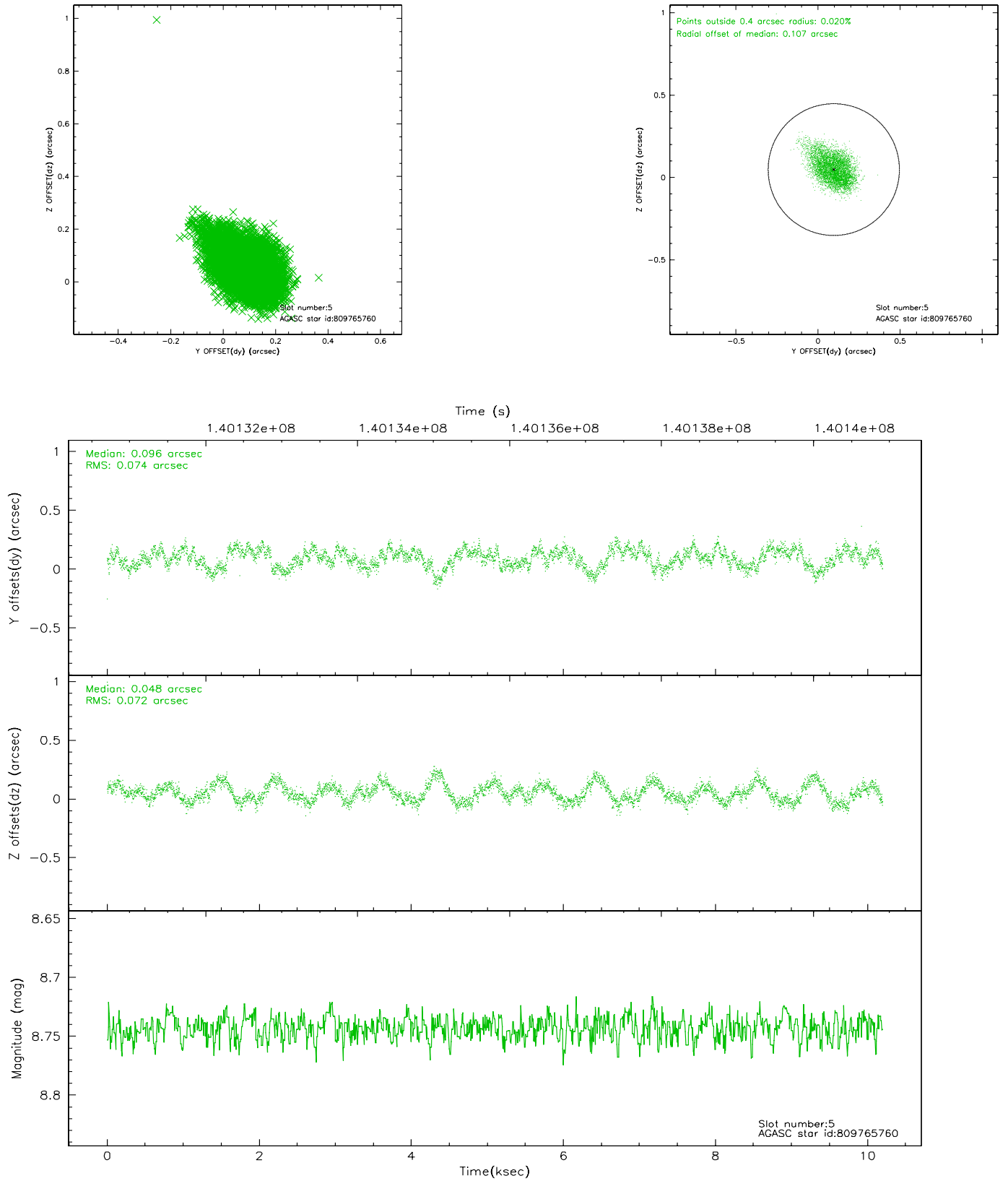
### 2.4.1 Slot 3



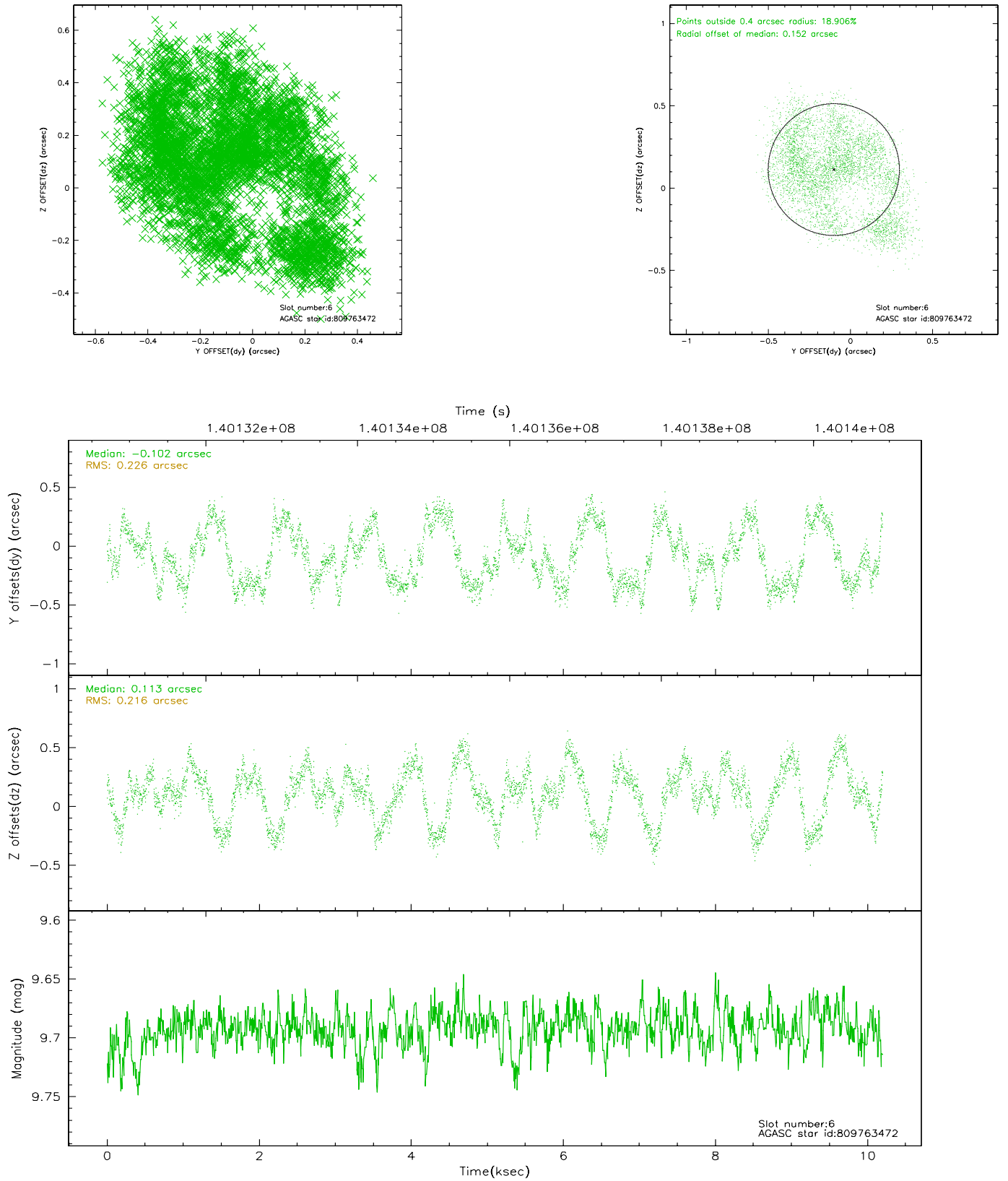
## 2.4.2 Slot 4



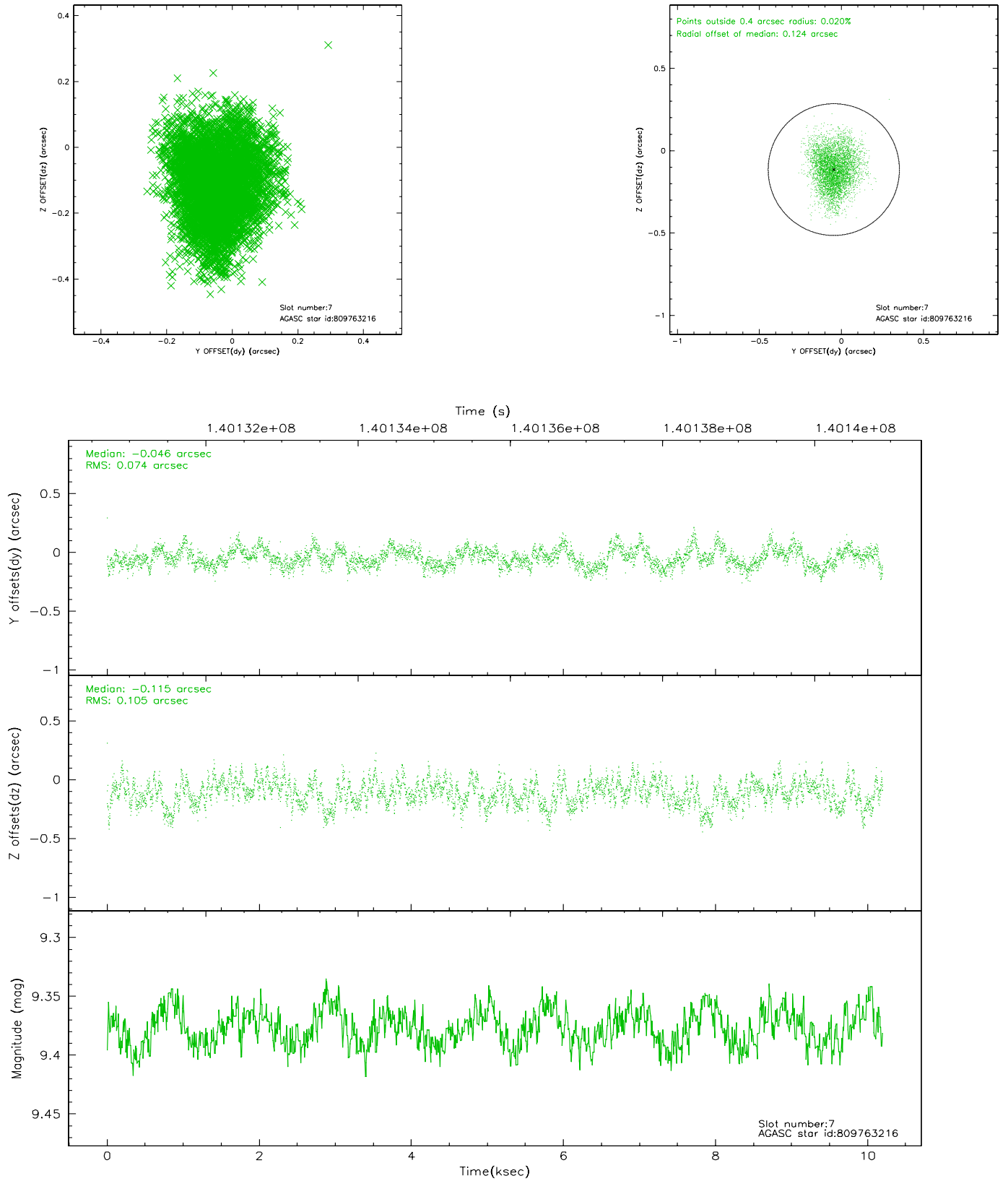
### 2.4.3 Slot 5



## 2.4.4 Slot 6

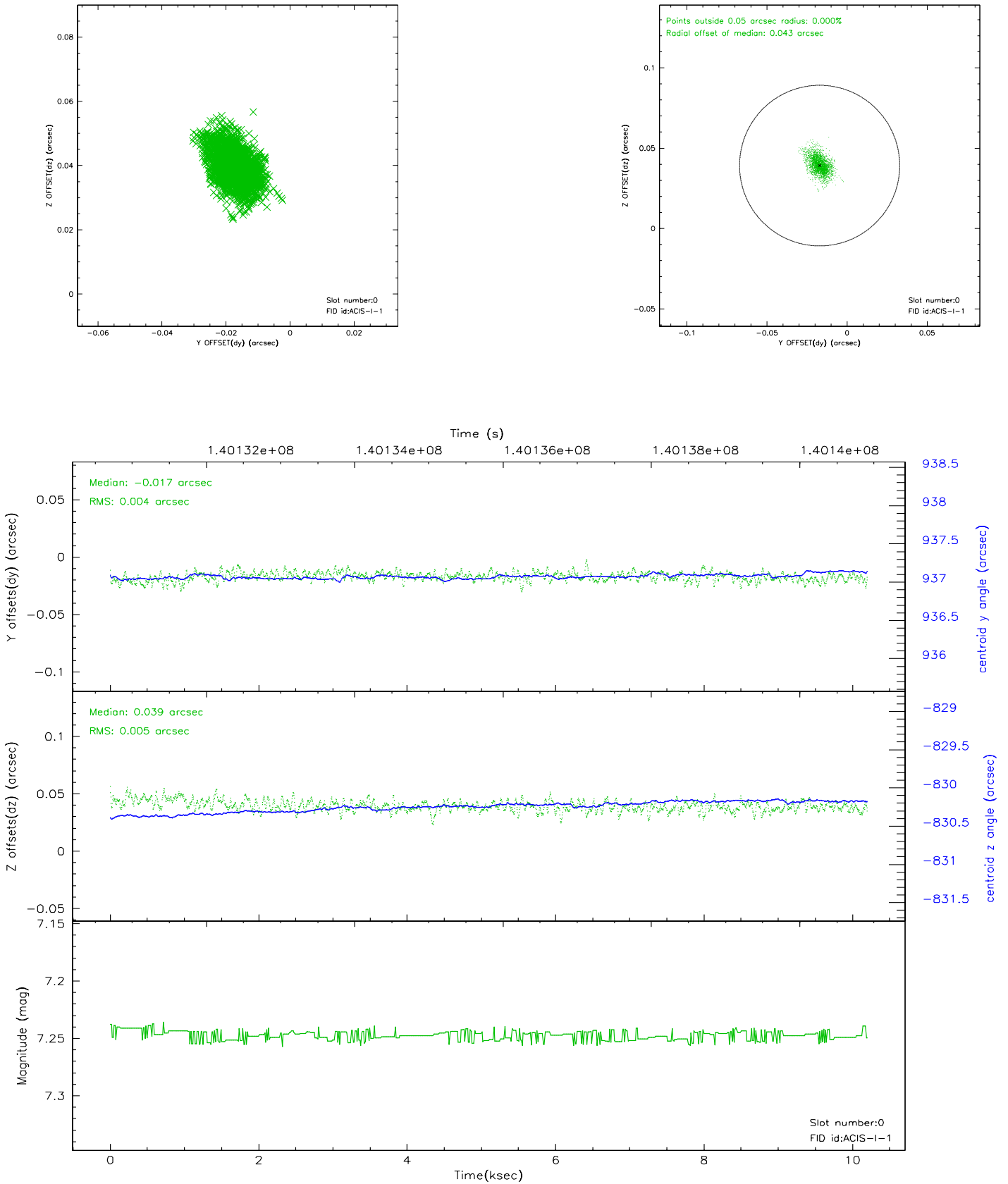


## 2.4.5 Slot 7

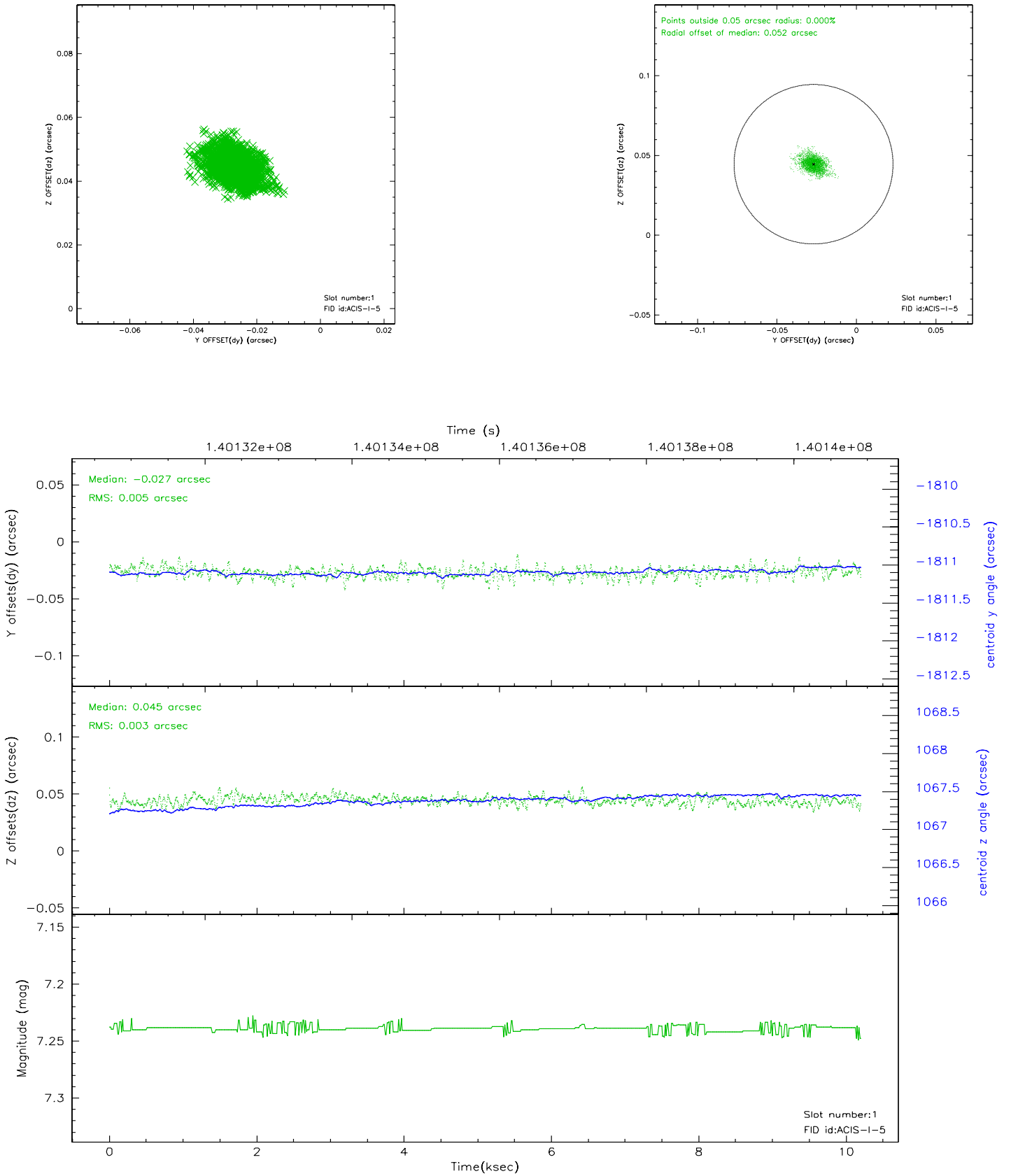


## 2.5 FID Slots

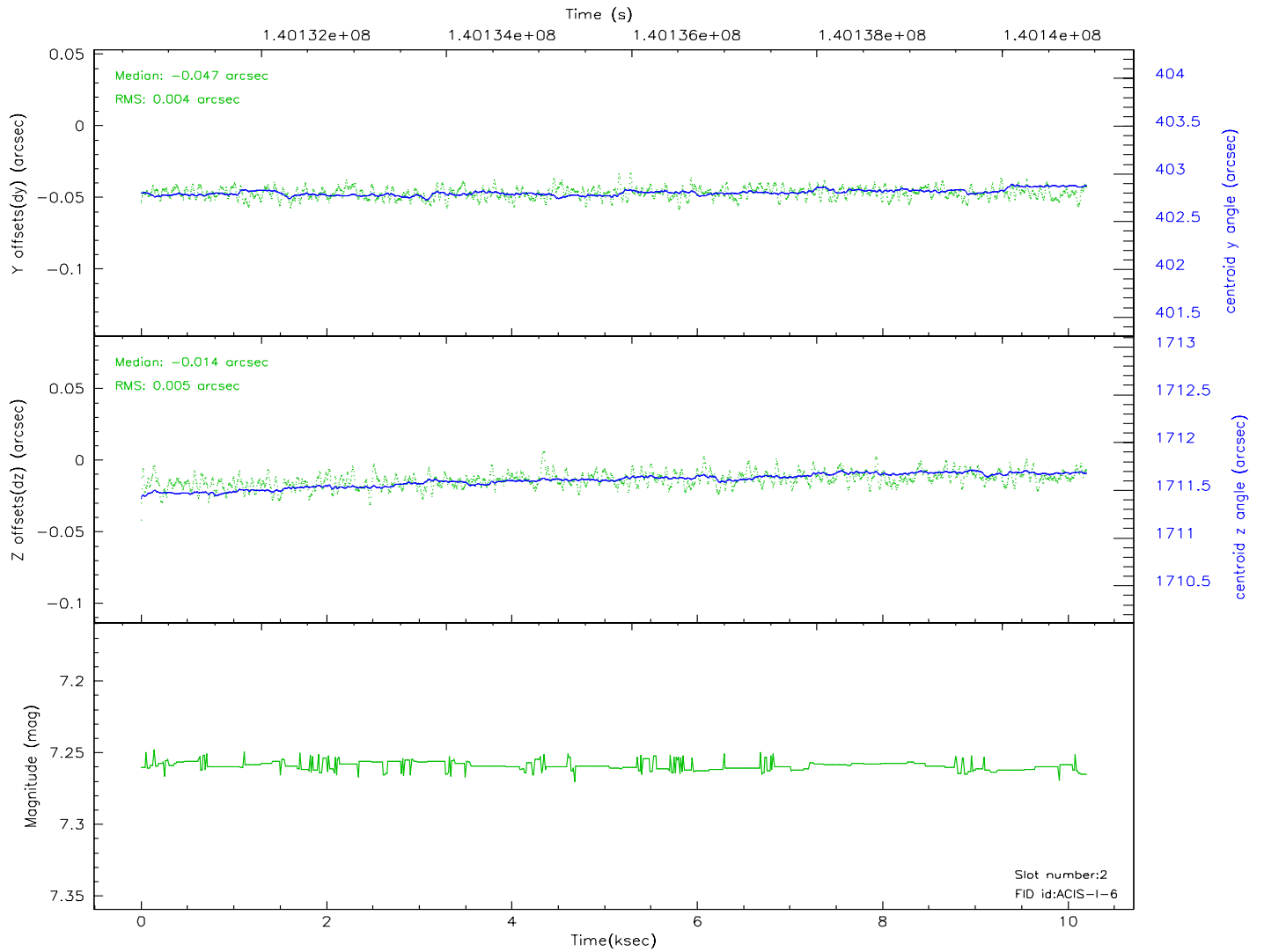
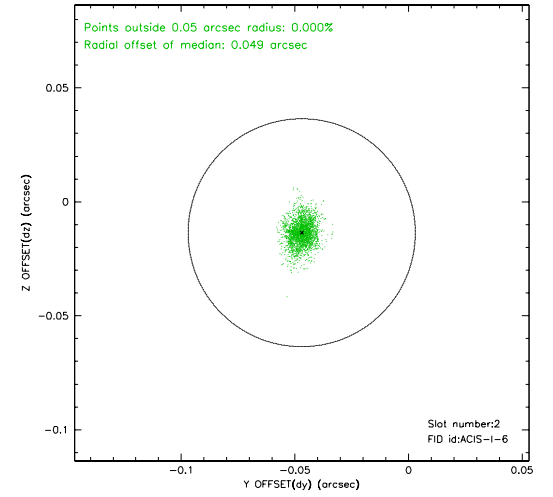
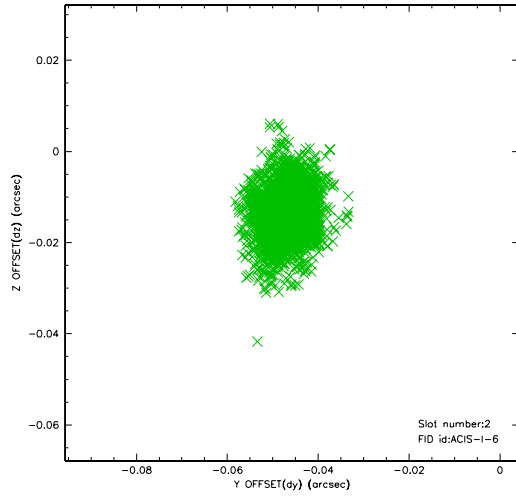
### 2.5.1 Slot 0



## 2.5.2 Slot 1

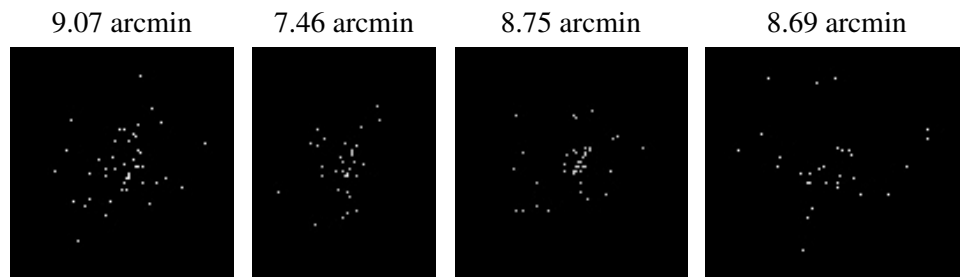


### 2.5.3 Slot 2





### 3 Point Sources



## A Summary

### A.1 Status

V&V Scientist	Jen Lauer
V&V Date (YYYY-MM-DD)	2006.09.19
V&V Edition	1
V&V Disposition and Status	OK
V&V Charge Time	10.195

### A.2 Comments