

V&V Reference Report

L2 ASCDS Version : 8.4.5

Observation 3494 - L2 Version 3
Chandra X-Ray Center

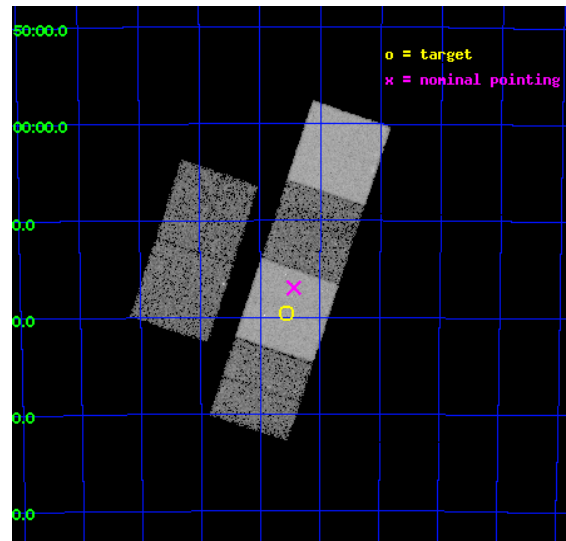
L2 Processing Date : Oct 7 2012

Contents

1	Front	2
2	OBI	3
2.1	OBI	3
2.1.1	Images	3
2.1.2	Bias	3
2.1.3	Parameters	4
2.1.4	Events	4
2.2	Compared Parameters	5
2.3	Aspect	6
2.4	Star Slots	9
2.4.1	Slot 3	9
2.4.2	Slot 4	10
2.4.3	Slot 5	11
2.4.4	Slot 6	12
2.4.5	Slot 7	13
2.5	FID Slots	14
2.5.1	Slot 0	14
2.5.2	Slot 1	15
2.5.3	Slot 2	16
A	Summary	17
A.1	Status	17
A.2	Comments	17

1 Front

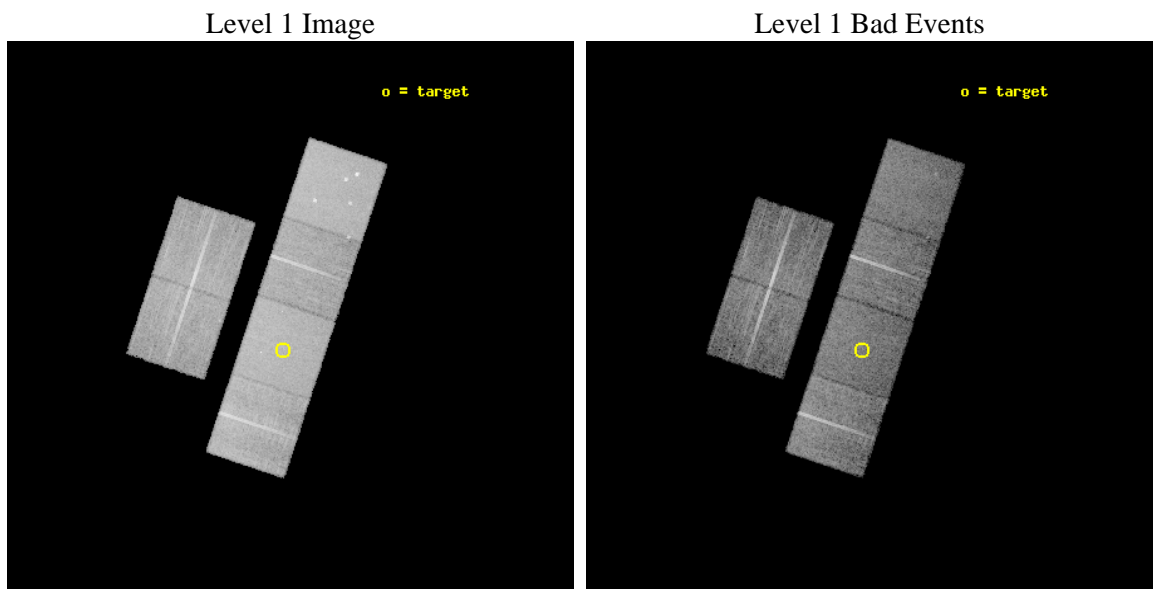
seq_num	500296	Sequence number
obs_id	3494	Observation id
title	CHANDRA ARCSECOND LOCALIZATION OF THE X-RAY FLASH XRF020427	Propos
observer	Prof. Derek Fox	Principal investigator
object	XRF020427	Source name
dtcycle	0	
cycle	P	events from which exps? Prim/Second/Both
ra_targ	332.39	Observer's specified target RA [deg]
dec_targ	-65.326806	Observer's specified target Dec [deg]
ra_nom	332.35964682031	Nominal RA [deg]
dec_nom	-65.282868054257	Nominal Dec [deg]
roll_nom	108.36508602858	Nominal Roll [deg]
revision	3	Processing version of data
ontime	14751.999945045	Sum of GTIs [s]
livetime	14565.201239152	Livetime [s]
ontime2	14751.999945045	Sum of GTIs [s]
ontime3	14751.999945045	Sum of GTIs [s]
ontime5	14751.999945045	Sum of GTIs [s]
ontime6	14751.999945045	Sum of GTIs [s]
ontime7	14751.999945045	Sum of GTIs [s]
ontime8	14751.999945045	Sum of GTIs [s]
l2events	150840	Number of level 2 events



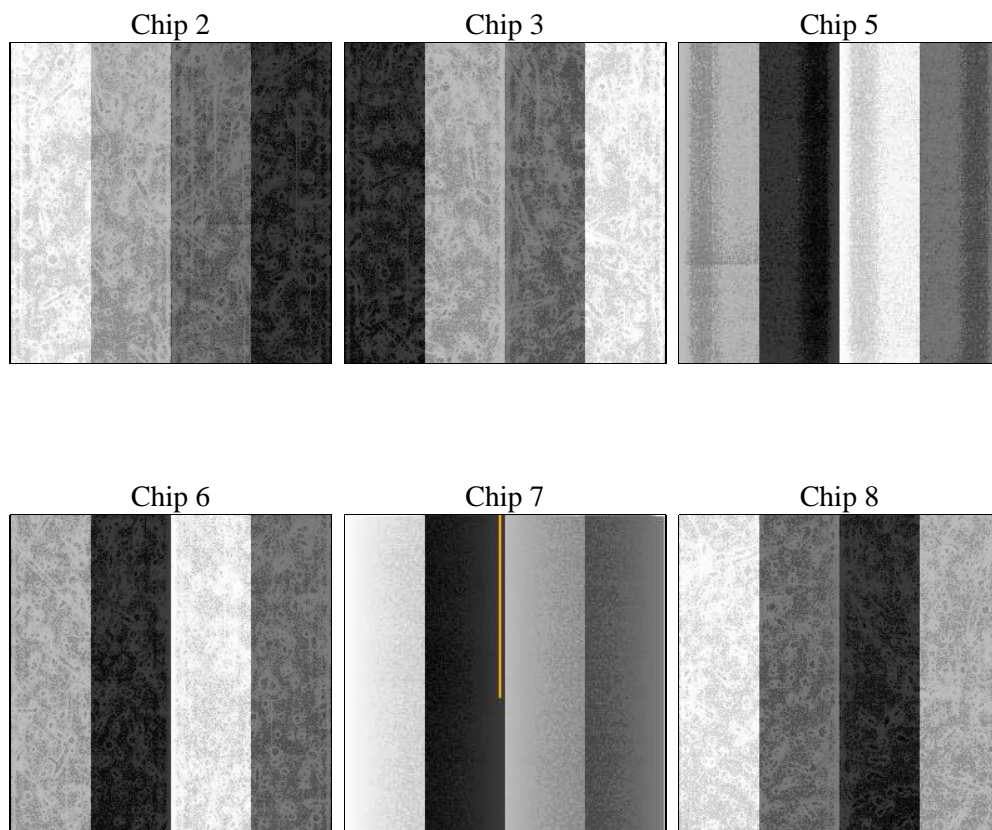
2 OBI

2.1 OBI

2.1.1 Images



2.1.2 Bias



2.1.3 Parameters

obi_num	0	Obi number	sched_exp_time	15000.000000	[s] Scheduled observation exposure time
ascdsver	8.4.5	Processing system revision	ontime	14751.999945045	Sum of GTIs [s]
caldsver	4.5.2	 	ontime2	14751.999945045	Sum of GTIs [s]
date	2012-10-07T11:30:53	Date and time of file creation	ontime3	14751.999945045	Sum of GTIs [s]
revision	3	Processing version of data	ontime5	14751.999945045	Sum of GTIs [s]
			ontime6	14751.999945045	Sum of GTIs [s]
			ontime7	14751.999945045	Sum of GTIs [s]
			ontime8	14751.999945045	Sum of GTIs [s]
			l1events	661818	Number of level 1 events

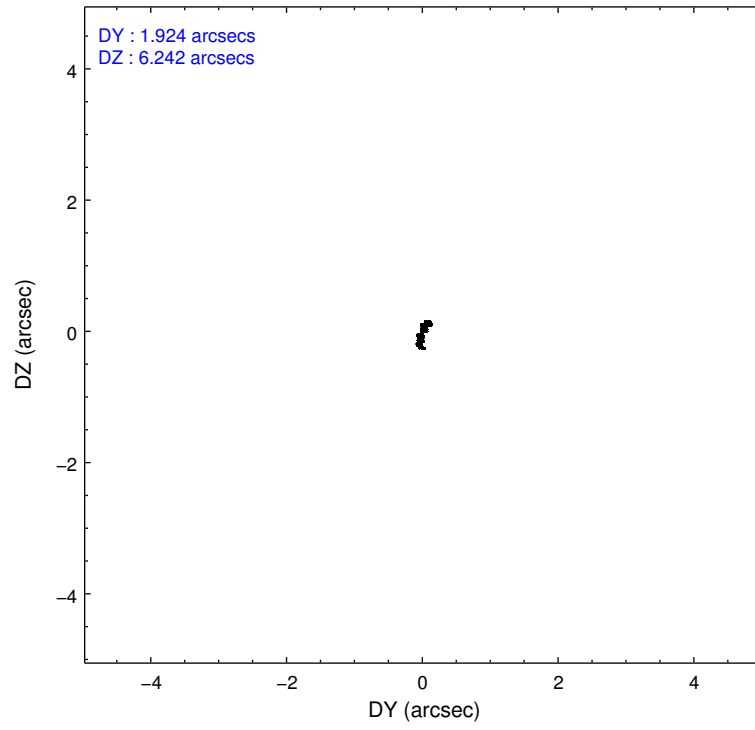
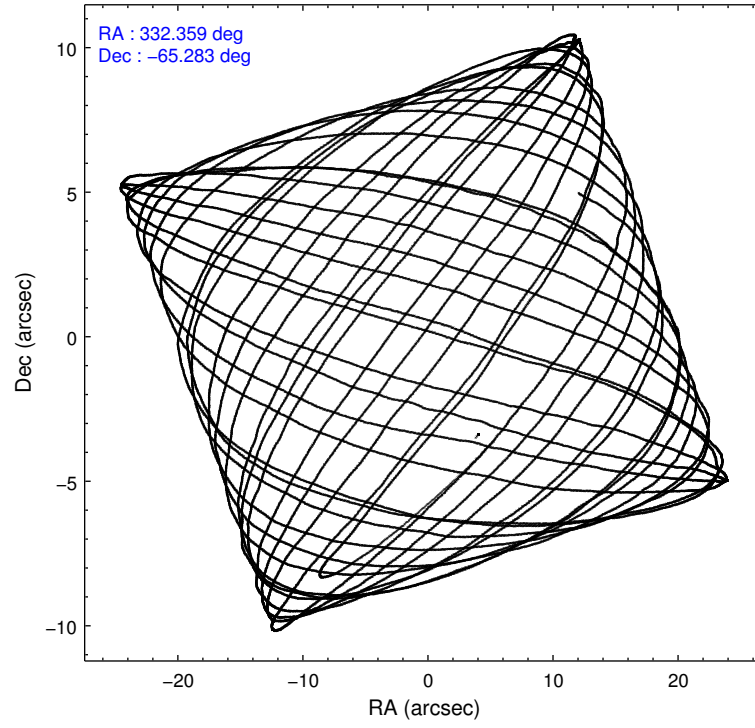
2.1.4 Events

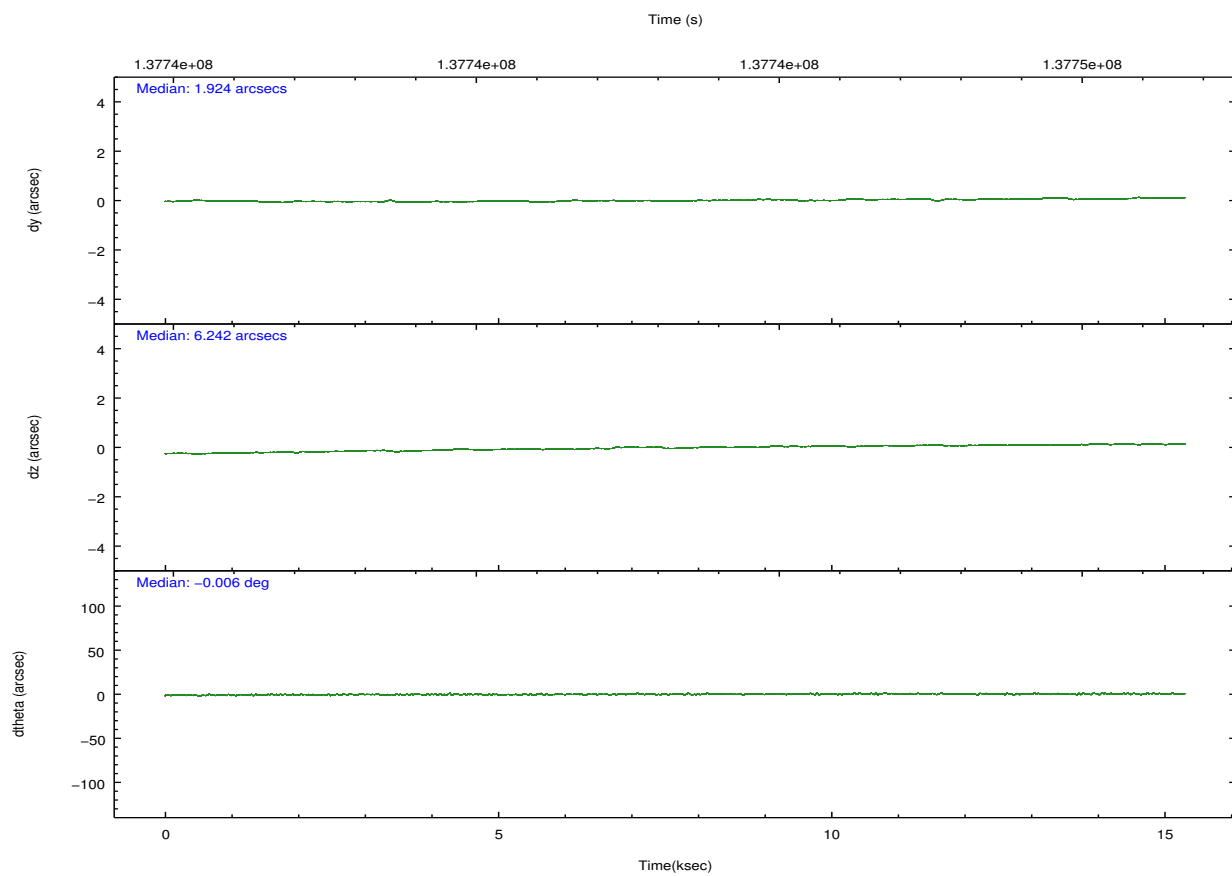
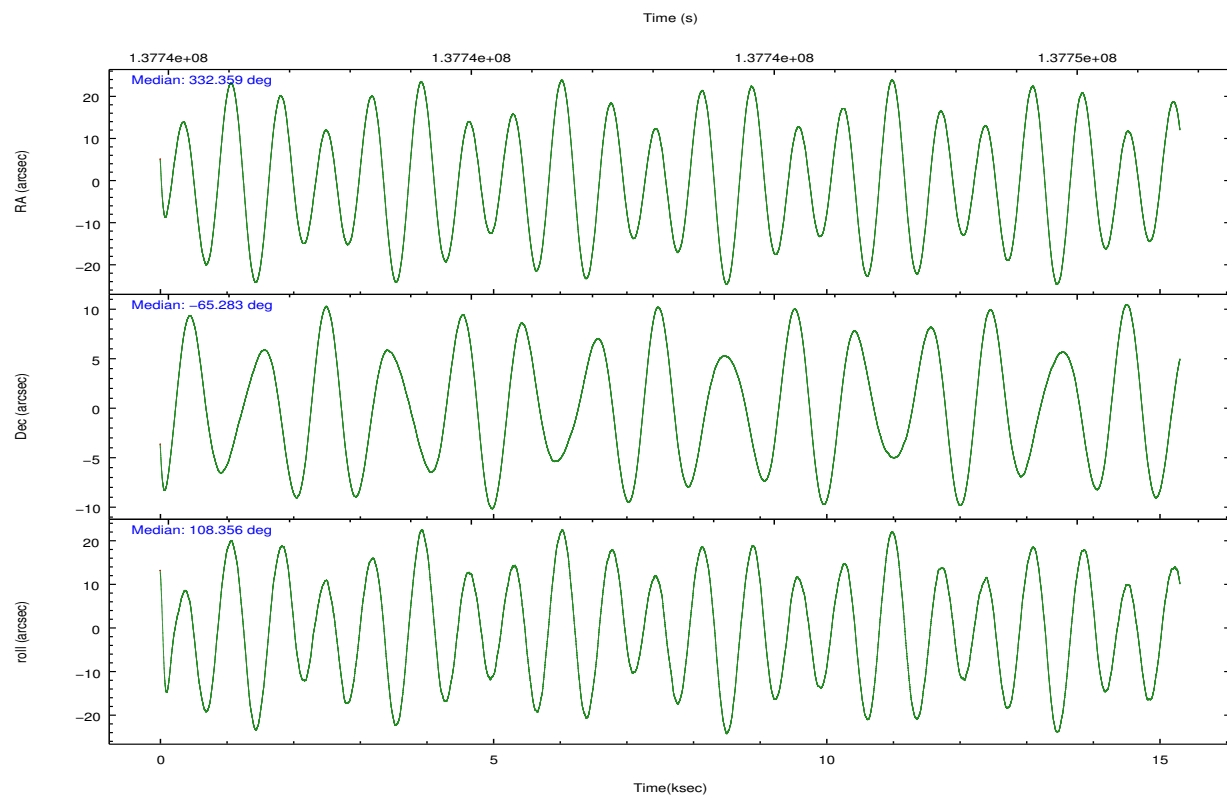
	ccd 2	ccd 3	ccd 5	ccd 6	ccd 7	ccd 8		ccd 2	ccd 3	ccd 5	ccd 6	ccd 7	ccd 8
level 1 events	95661	90359	136800	92872	125473	120653	grade 0 events	4629	4927	8681	4673	5381	7763
rejected events	84777	79260	72352	81722	72352	96176		4%	5%	6%	5%	4%	6%
rejected %	88%	87%	52%	87%	57%	79%	grade 1 events	48	42	375	45	115	72
								0%	0%	0%	0%	0%	0%
							grade 2 events	2370	2221	17933	2229	10444	5278
								2%	2%	13%	2%	8%	4%
							grade 3 events	991	972	2747	1084	4874	2620
								1%	1%	2%	1%	3%	2%
							grade 4 events	1028	999	2686	1062	4665	2399
								1%	1%	1%	1%	3%	1%
							grade 5 events	3501	3809	10300	4078	11890	5193
								3%	4%	7%	4%	9%	4%
							grade 6 events	1873	1985	32438	2104	27780	6431
								1%	2%	23%	2%	22%	5%
							grade 7 events	81221	75404	61640	77597	60324	90897
								84%	83%	45%	83%	48%	75%

2.2 Compared Parameters

Parameter	Planned	Actual	Parameter	Planned	Actual
Instrument	ACIS	ACIS	Obspar format version number	7	7
Detector	ACIS-235678	ACIS-235678	Obspar file type	PREDICTED	ACTUAL
Grating	NONE	NONE	Obspar update status	NONE	UPDATED
Data mode	FAINT	FAINT	Number of optional ACIS chips dropped	0	0
Observation mode	POINTING	POINTING	On-chip summing requested	N	N
[deg] Pointing RA	332.408877	332.3596468203139	Subarray requested	NONE	NONE
[deg] Pointing Dec	-65.300696	-65.28286805425675	Alternating exposures requested	N	N
[deg] Pointing Roll	108.253169	108.3650860285813	[s] Primary exposure time	0.000000	3.2
[mm] SIM focus pos	-0.684267	-0.6828225247311905			
[mm] SIM defocus	0	0.001444936568705701			
[mm] SIM translation stage pos	-190.132523	-190.1400660498719			
[mm] SIM translation stage offset	0	0.00754346686406393			
[s] Observation start time (MET)	137735813.184000	137735003.68998			
Observation start date	2002-05-14T03:55:49	2002-05-14T03:43:23			
[s] Observation end time (MET)	137750813.184000	137751245.84065			
Observation end date	2002-05-14T08:05:49	2002-05-14T08:14:05			
Read mode	TIMED	TIMED			

2.3 Aspect



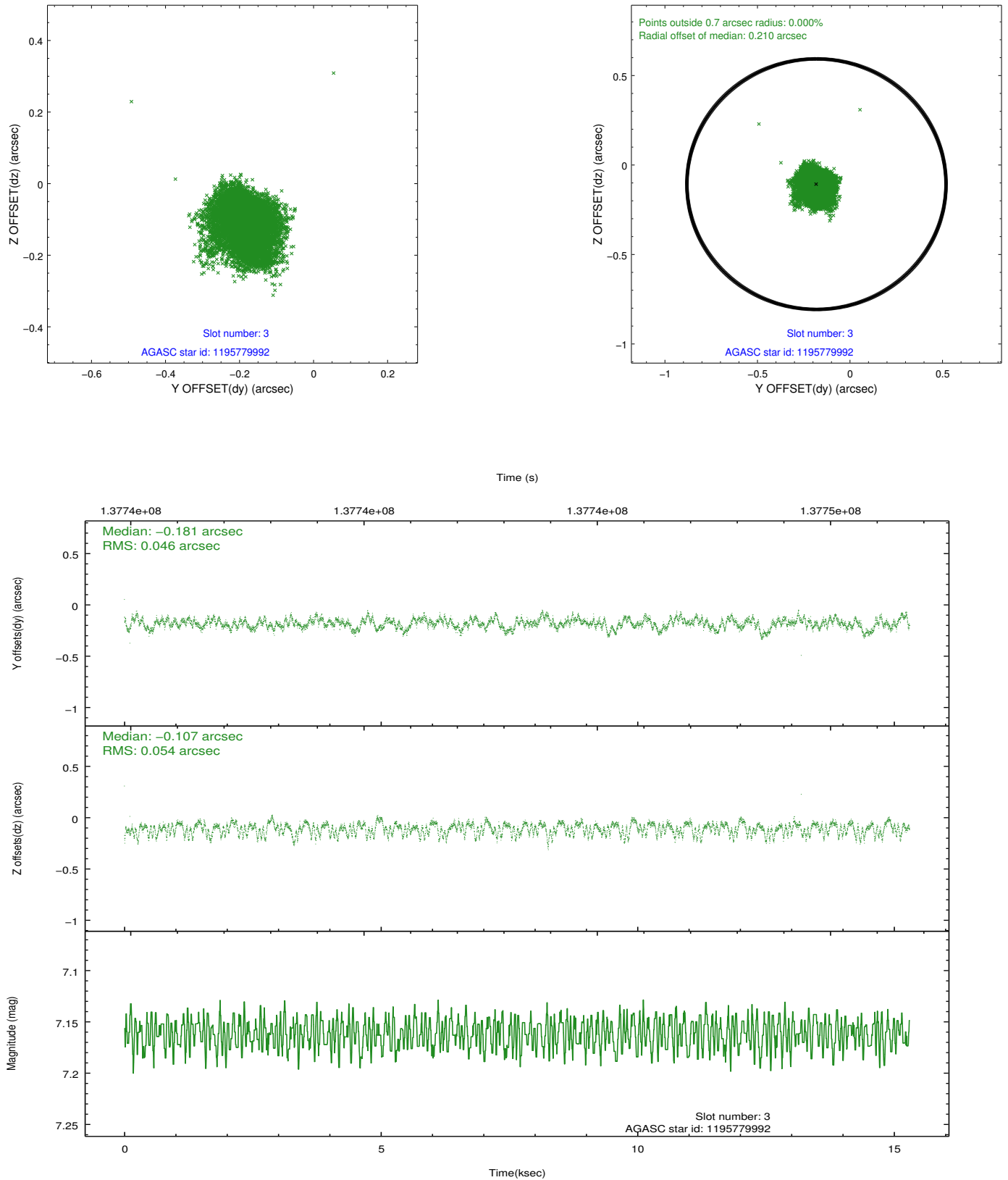


Slot Statistics

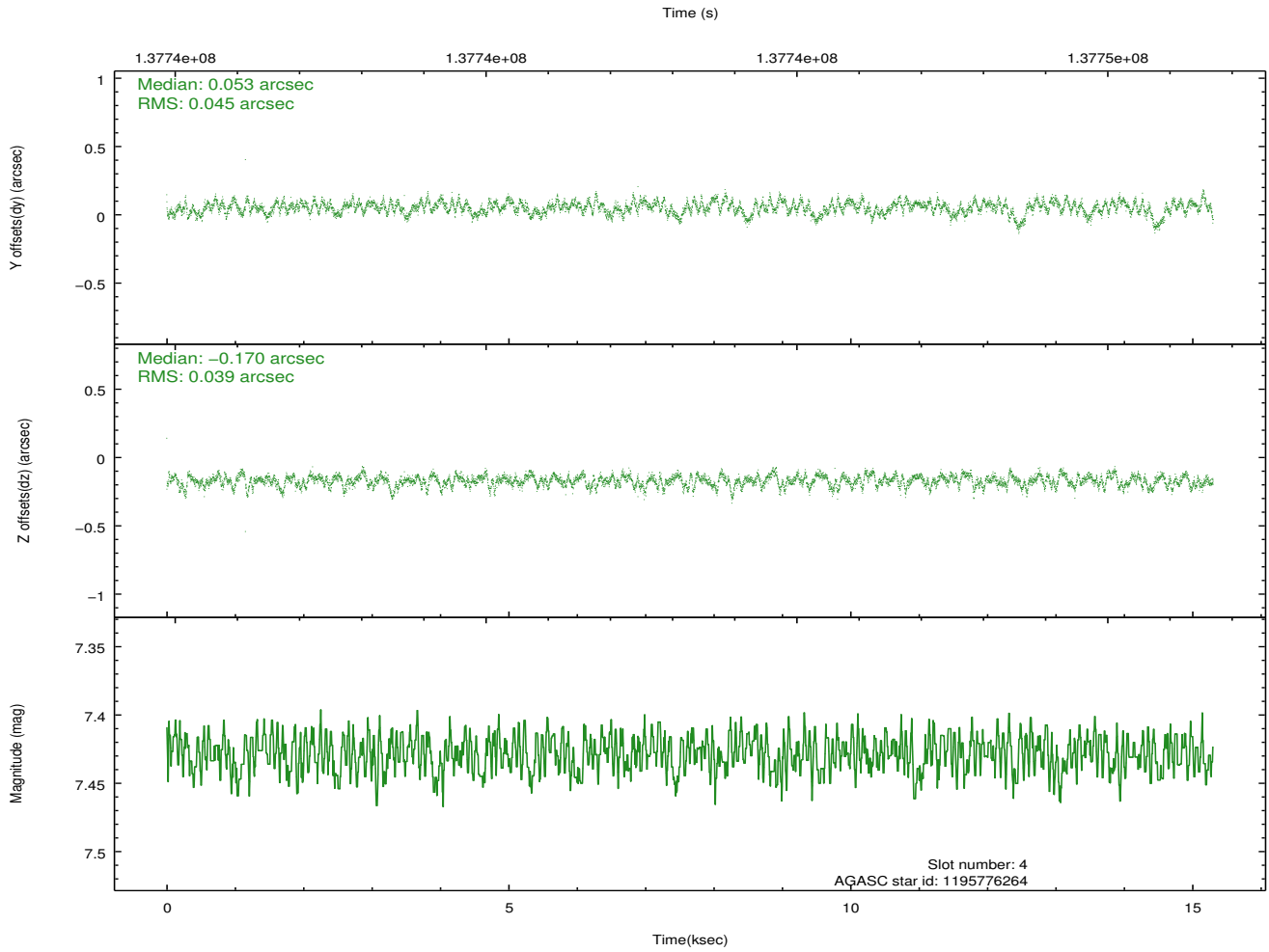
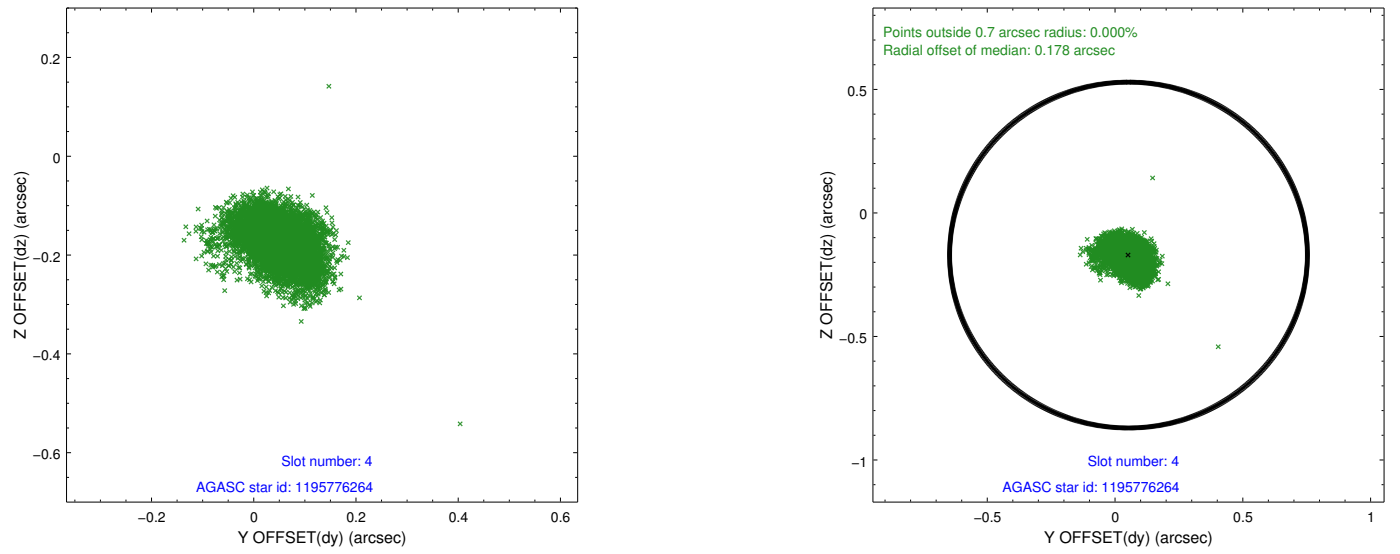
slot	status	id	mag	n_pts	med_dy	med_dz	dr1	dr2	ra	dec	mean_y	mean_z
0	FID	ACIS-S-4	7.21	3732	-0.023	-0.008	0.006	0.010	0.000000	0.000000	2158.77	181.34
1	FID	ACIS-S-5	7.24	3731	0.007	-0.002	0.005	0.010	0.000000	0.000000	-1807.01	174.77
2	FID	ACIS-S-6	7.36	3731	-0.013	0.024	0.007	0.011	0.000000	0.000000	406.72	818.58
3	GUIDE	1195779992	7.16	7464	-0.181	-0.107	0.076	0.121	331.940145	-65.103283	894.06	452.22
4	GUIDE	1195776264	7.43	7466	0.053	-0.170	0.062	0.106	331.516114	-65.668289	-851.65	1674.13
5	GUIDE	1195389528	7.82	7463	-0.156	0.175	0.074	0.118	333.118104	-64.595241	2062.39	-1833.79
6	GUIDE	1195782248	10.15	7212	0.222	-0.129	0.190	0.303	331.956274	-66.053242	-2368.52	1476.17
7	GUIDE	1195775008	10.36	7458	0.077	0.229	0.168	0.293	334.052993	-65.386139	-1095.27	-2234.92

2.4 Star Slots

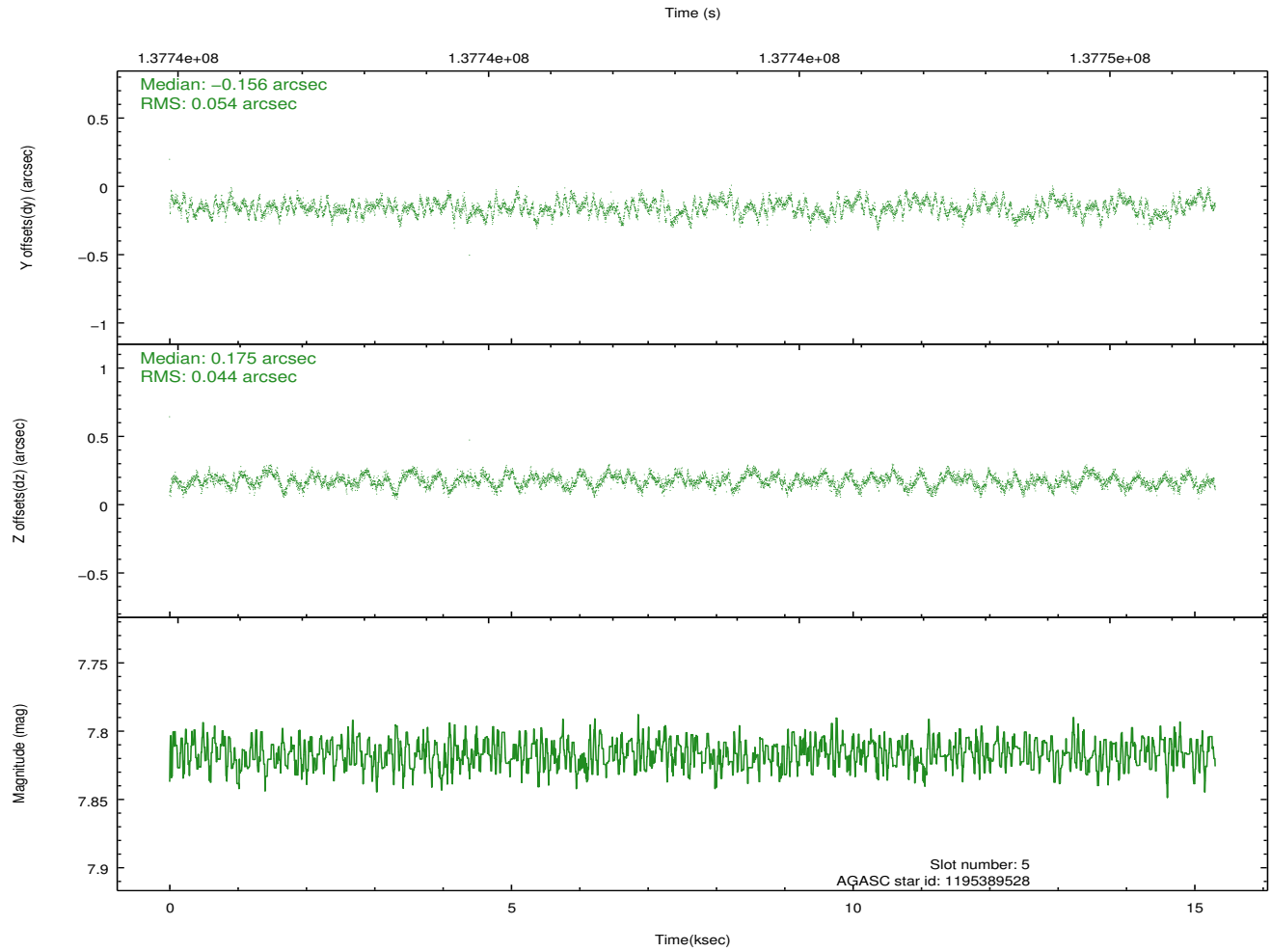
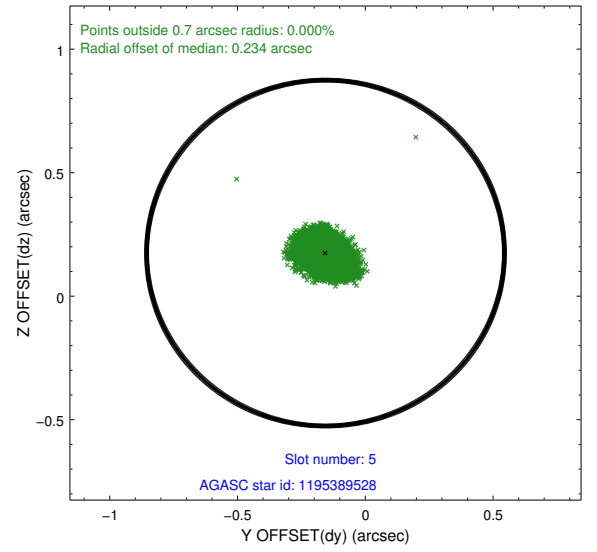
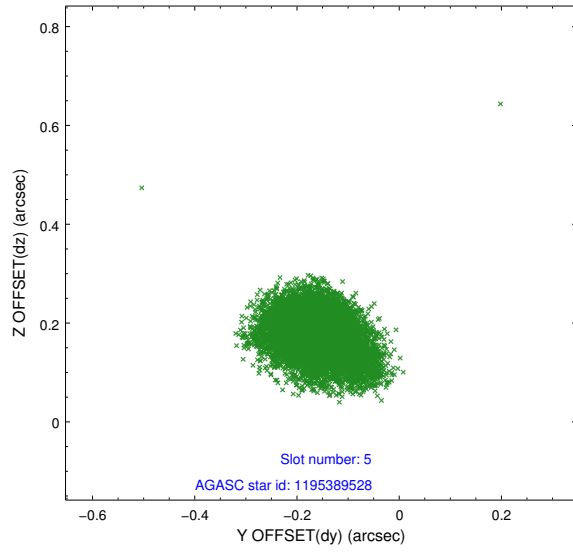
2.4.1 Slot 3



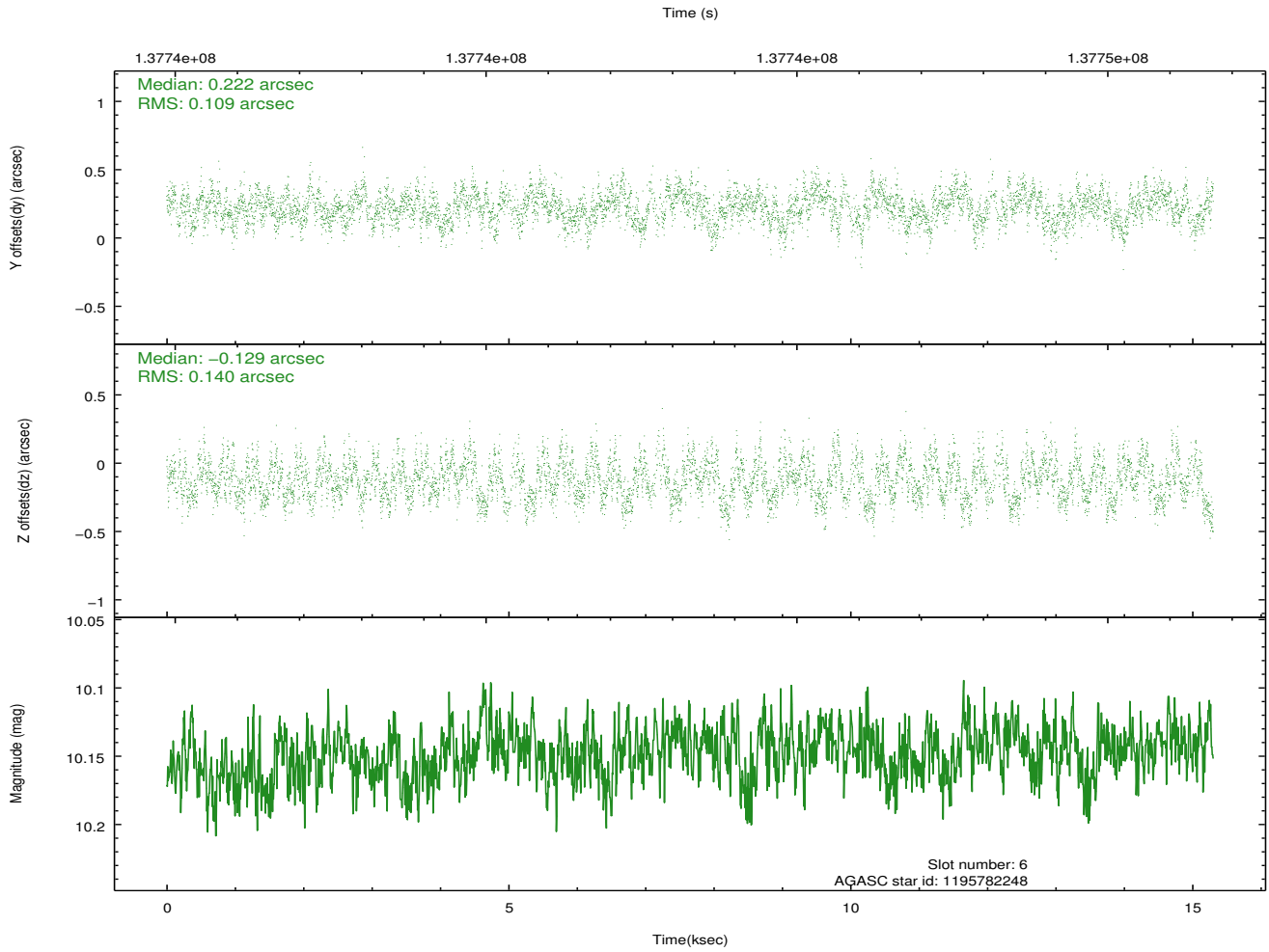
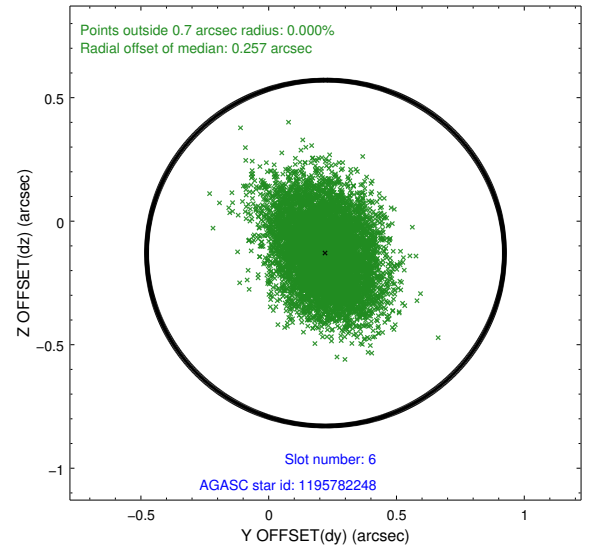
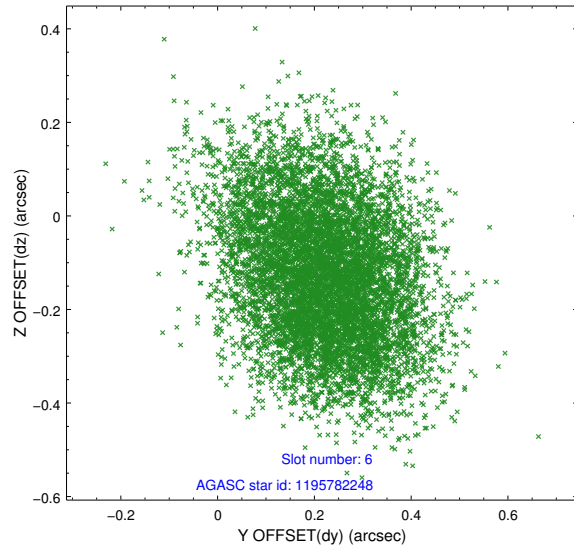
2.4.2 Slot 4



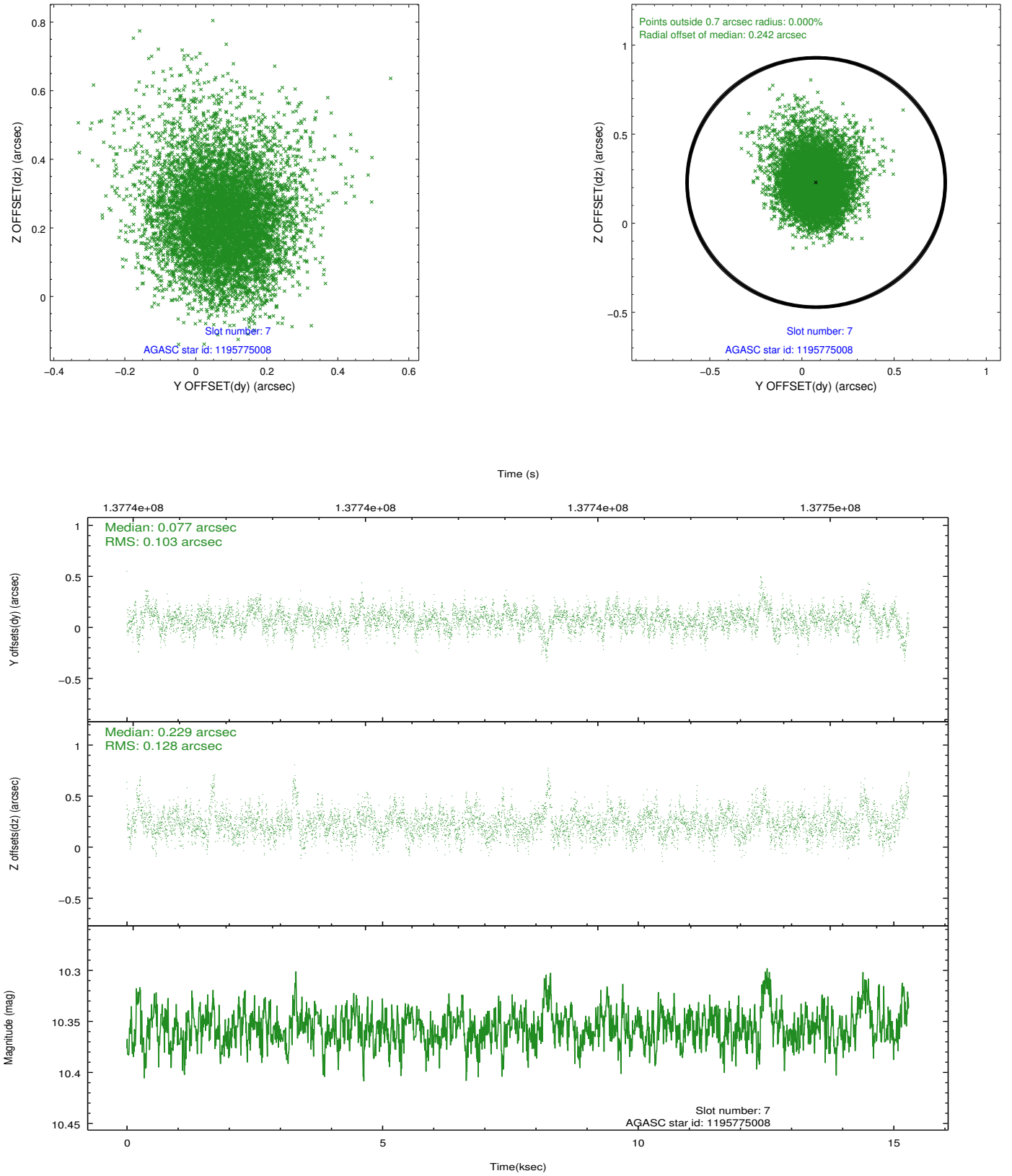
2.4.3 Slot 5



2.4.4 Slot 6

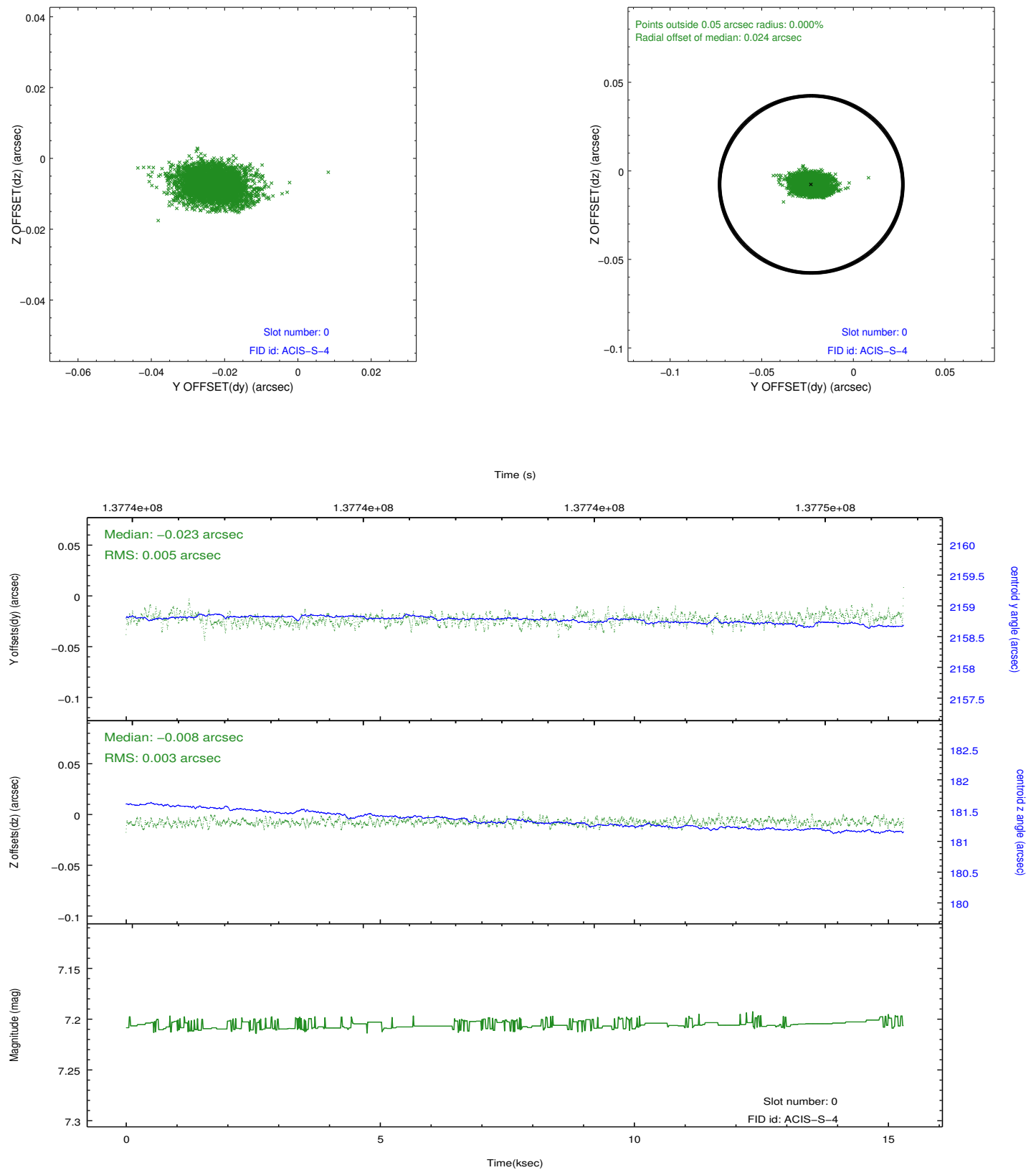


2.4.5 Slot 7

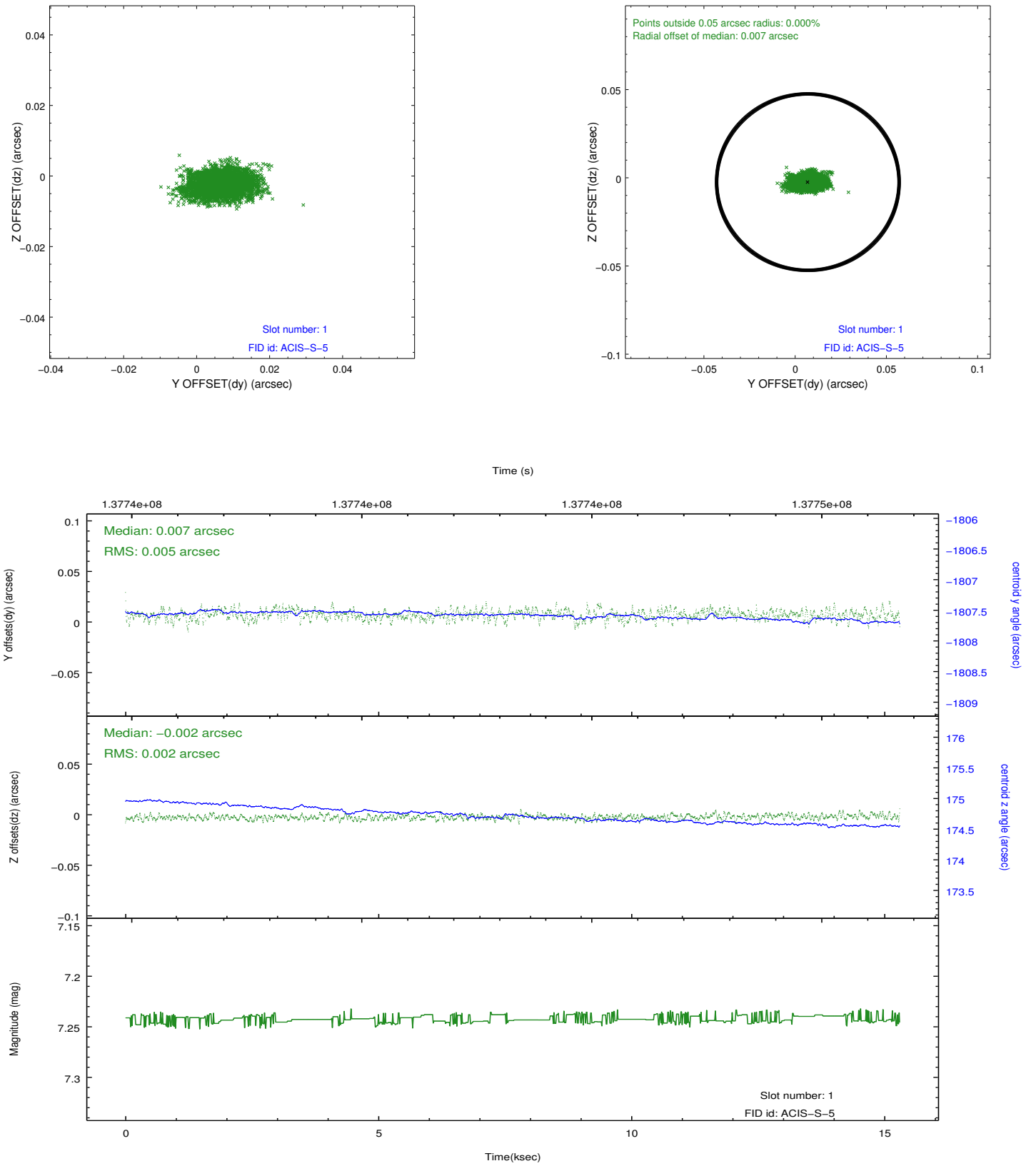


2.5 FID Slots

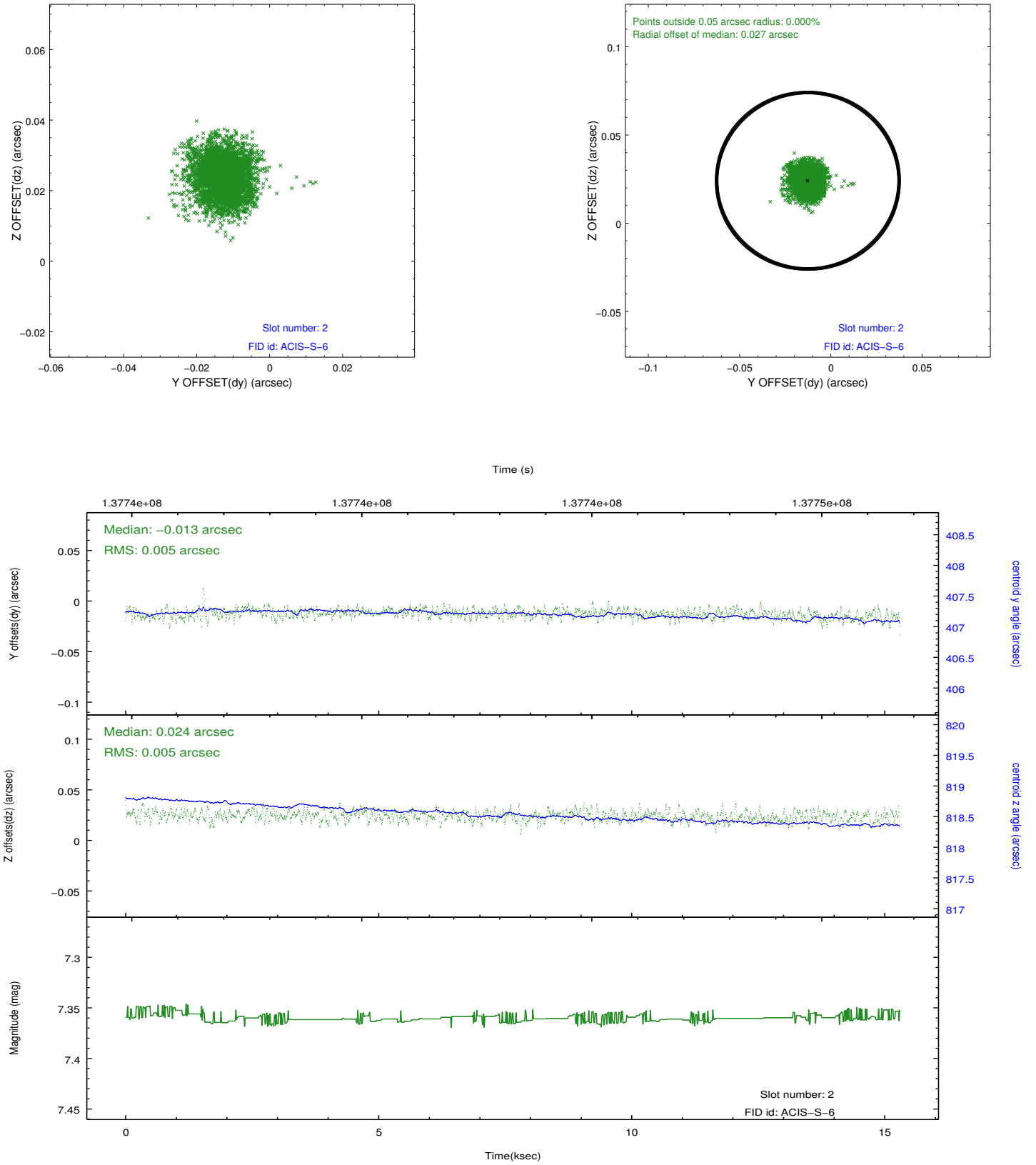
2.5.1 Slot 0



2.5.2 Slot 1



2.5.3 Slot 2



A Summary

A.1 Status

V&V Scientist	Beth Sundheim
V&V Date (YYYY-MM-DD)	2012.10.16
V&V Edition	1
V&V Disposition and Status	OK
V&V Charge Time	14.755

A.2 Comments