

V&V Reference Report

L2 ASCDS Version : 8.4.5

Observation 3493 - L2 Version 4
Chandra X-Ray Center

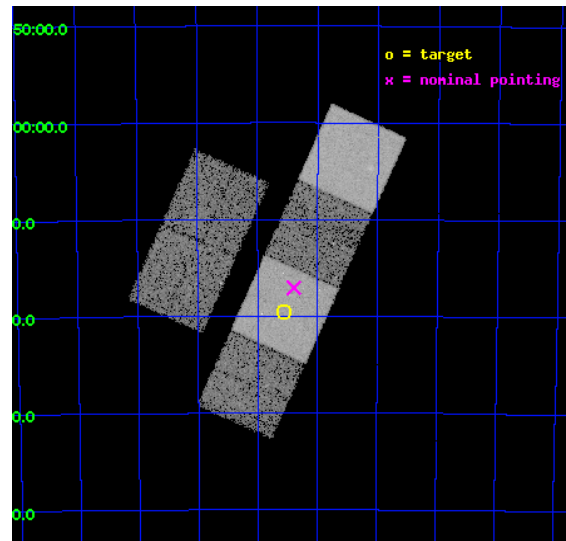
L2 Processing Date : Oct 7 2012

Contents

1	Front	2
2	OBI	3
2.1	OBI	3
2.1.1	Images	3
2.1.2	Bias	3
2.1.3	Parameters	4
2.1.4	Events	4
2.2	Compared Parameters	5
2.3	Aspect	6
2.4	Star Slots	9
2.4.1	Slot 3	9
2.4.2	Slot 4	10
2.4.3	Slot 5	11
2.4.4	Slot 6	12
2.4.5	Slot 7	13
2.5	FID Slots	14
2.5.1	Slot 0	14
2.5.2	Slot 1	15
2.5.3	Slot 2	16
A	Summary	17
A.1	Status	17
A.2	Comments	17

1 Front

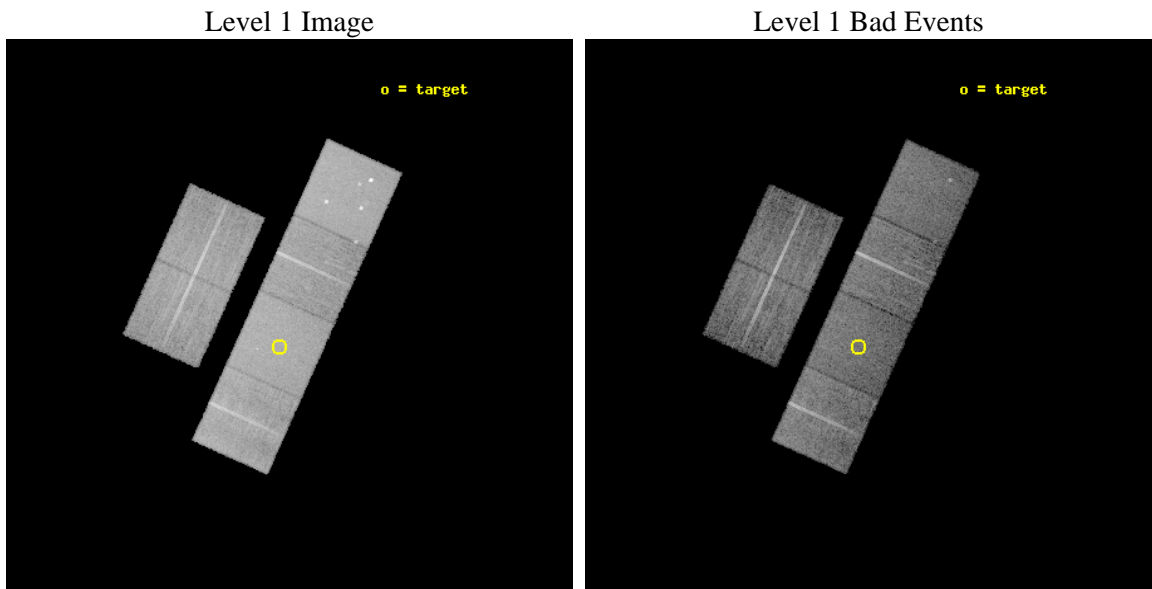
seq_num	500295	Sequence number
obs_id	3493	Observation id
title	CHANDRA ARCSECOND LOCALIZATION OF THE X-RAY FLASH XRF020427	Propos
observer	Prof. Derek Fox	Principal investigator
object	XRF020427	Source name
dtcycle	0	
cycle	P	events from which exps? Prim/Second/Both
ra_targ	332.39	Observer's specified target RA [deg]
dec_targ	-65.326806	Observer's specified target Dec [deg]
ra_nom	332.34881240013	Nominal RA [deg]
dec_nom	-65.284427190088	Nominal Dec [deg]
roll_nom	114.33192691974	Nominal Roll [deg]
revision	4	Processing version of data
ontime	13913.558987916	Sum of GTIs [s]
livetime	13737.377126271	Livetime [s]
ontime2	13916.799948156	Sum of GTIs [s]
ontime3	13916.799948156	Sum of GTIs [s]
ontime5	13916.799948156	Sum of GTIs [s]
ontime6	13916.799948156	Sum of GTIs [s]
ontime7	13913.558987916	Sum of GTIs [s]
ontime8	13910.318047583	Sum of GTIs [s]
l2events	145097	Number of level 2 events



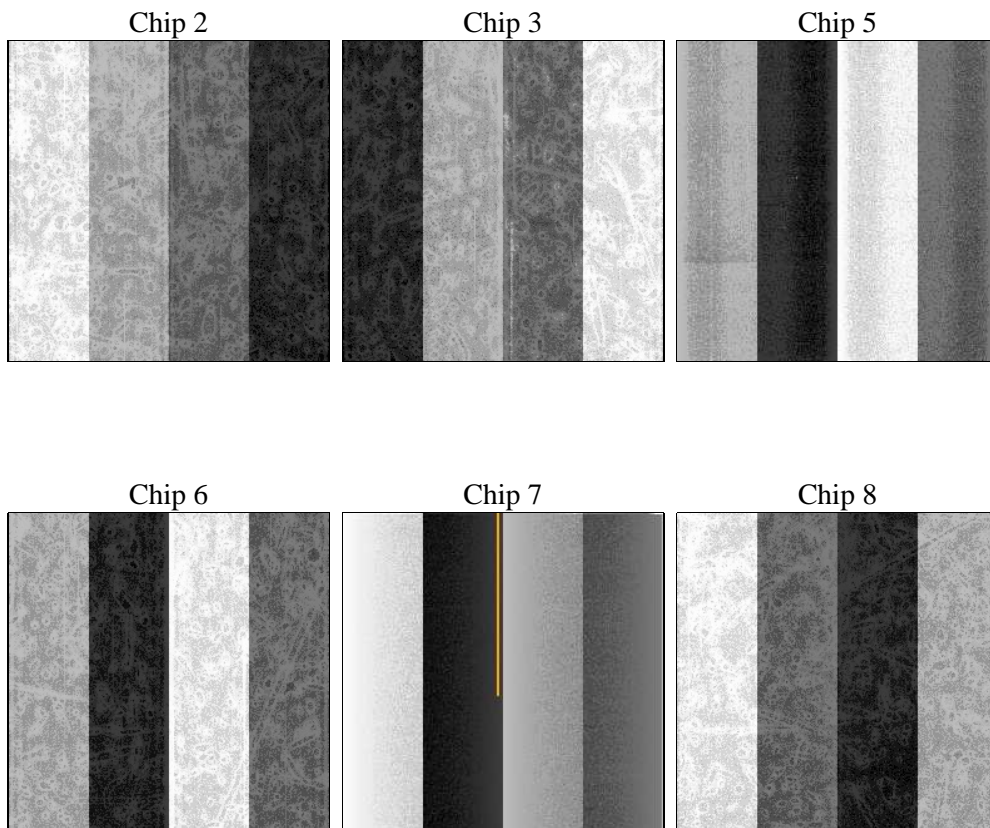
2 OBI

2.1 OBI

2.1.1 Images



2.1.2 Bias



2.1.3 Parameters

obi_num	0	Obi number	sched_exp_time	14164.561000	[s] Scheduled observation exposure time
ascdsver	8.4.5	Processing system revision	ontime	13913.558987916	Sum of GTIs [s]
caldsver	4.5.2	 	ontime2	13916.799948156	Sum of GTIs [s]
date	2012-10-07T09:16:50	Date and time of file creation	ontime3	13916.799948156	Sum of GTIs [s]
revision	4	Processing version of data	ontime5	13916.799948156	Sum of GTIs [s]
			ontime6	13916.799948156	Sum of GTIs [s]
			ontime7	13913.558987916	Sum of GTIs [s]
			ontime8	13910.318047583	Sum of GTIs [s]
			l1events	649895	Number of level 1 events

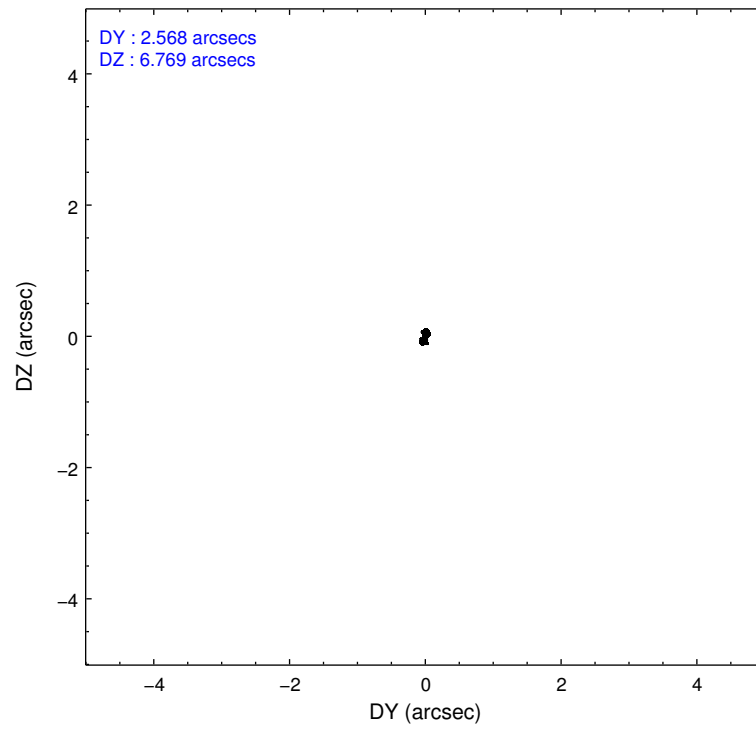
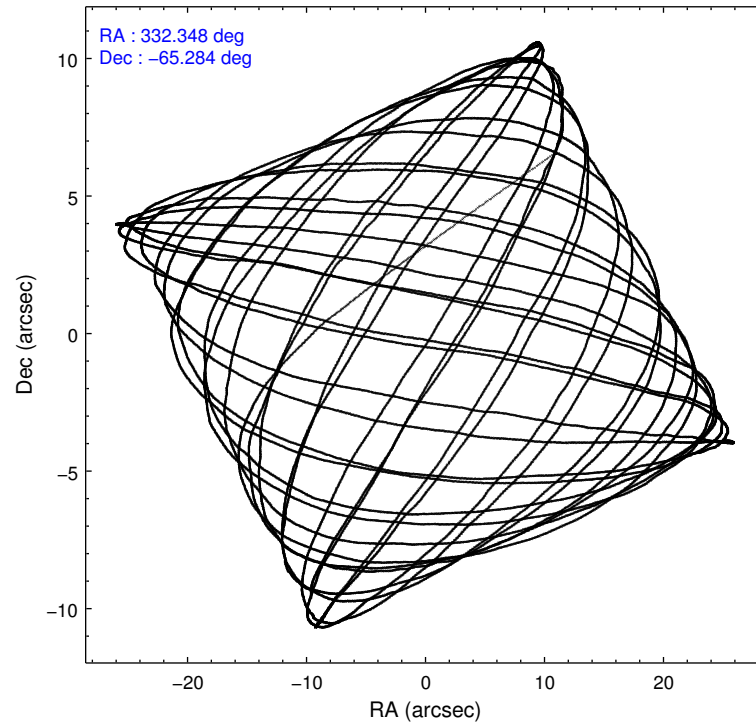
2.1.4 Events

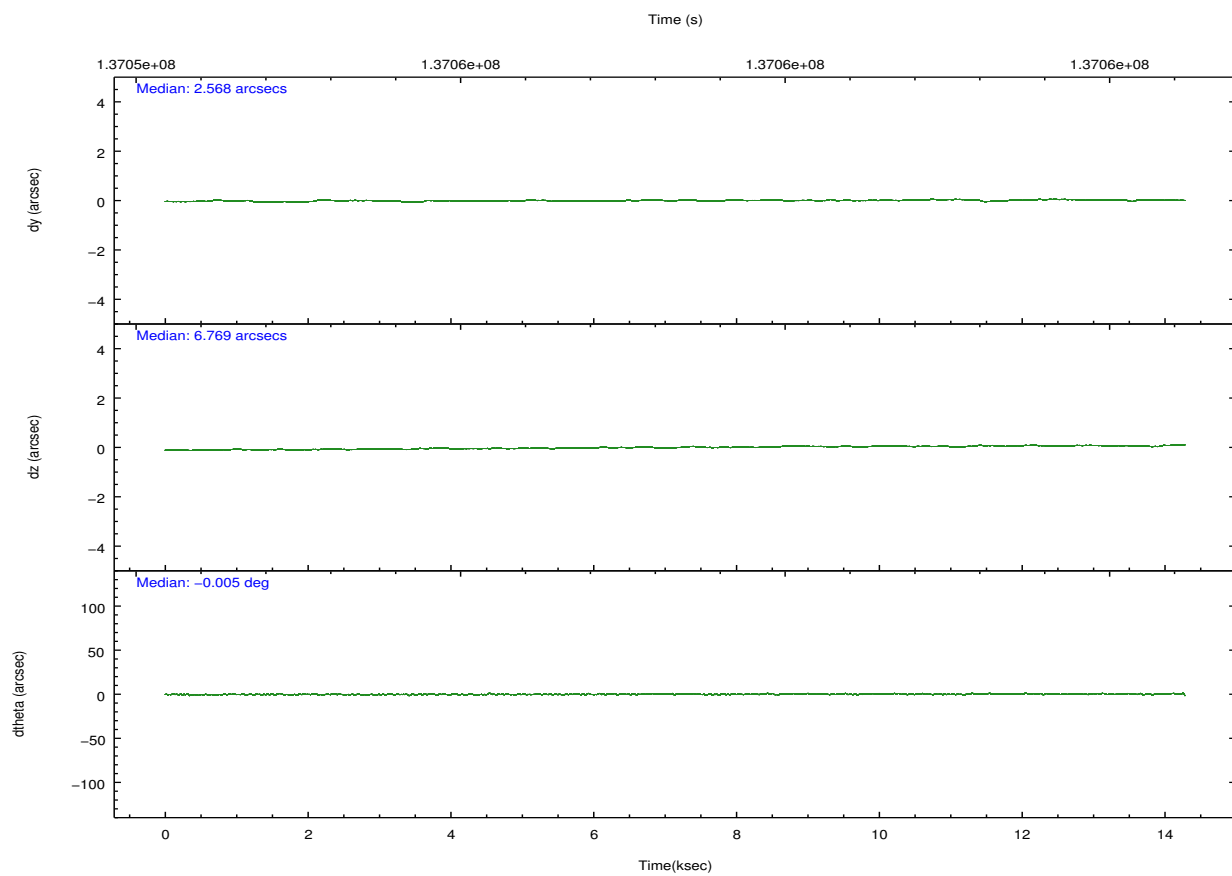
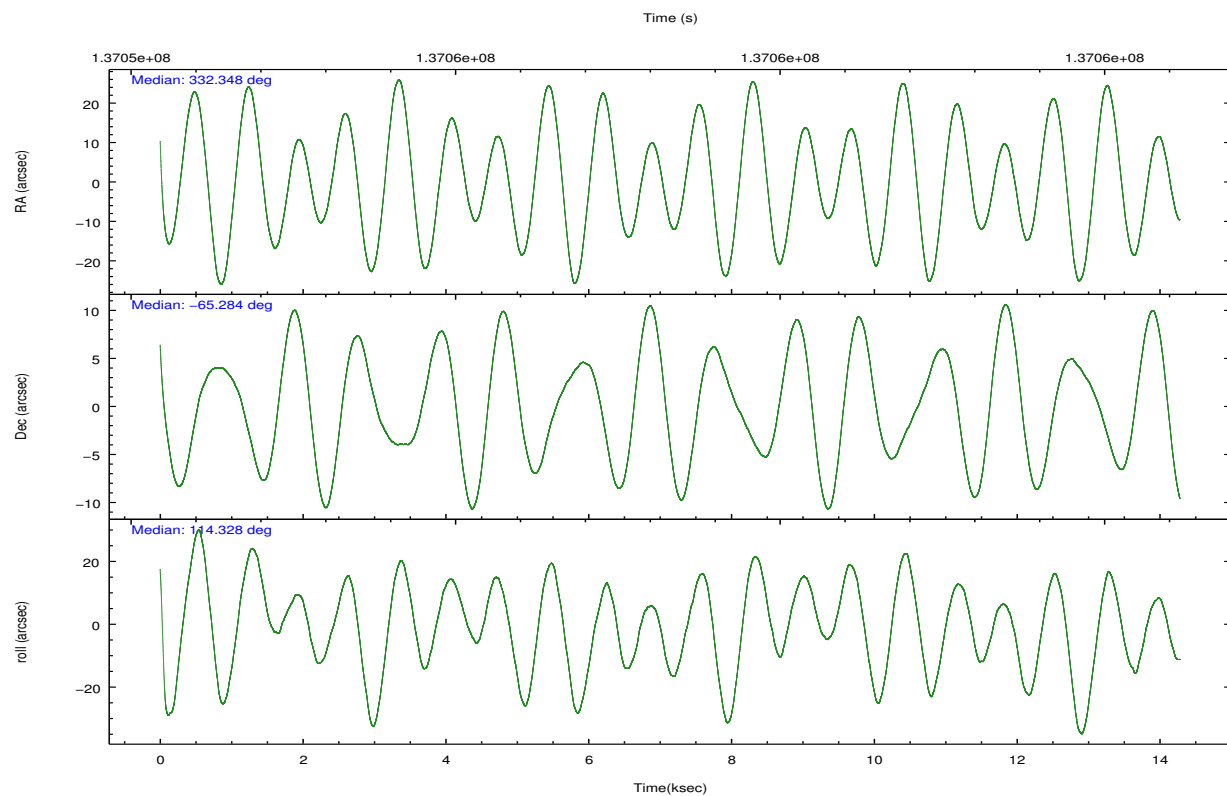
	ccd 2	ccd 3	ccd 5	ccd 6	ccd 7	ccd 8		ccd 2	ccd 3	ccd 5	ccd 6	ccd 7	ccd 8
level 1 events	91923	89988	136918	93327	121192	116547	grade 0 events	4554	4610	10022	4490	5152	8004
rejected events	81221	79234	71661	82224	70607	91972		4%	5%	7%	4%	4%	6%
rejected %	88%	88%	52%	88%	58%	78%	grade 1 events	55	43	510	50	102	83
								0%	0%	0%	0%	0%	0%
							grade 2 events	2369	2154	18828	2325	10094	5243
								2%	2%	13%	2%	8%	4%
							grade 3 events	931	969	2545	1096	4529	2730
								1%	1%	1%	1%	3%	2%
							grade 4 events	979	1016	2590	1063	4532	2608
								1%	1%	1%	1%	3%	2%
							grade 5 events	3182	3582	10144	3985	11429	5040
								3%	3%	7%	4%	9%	4%
							grade 6 events	1876	2010	31306	2135	26300	5995
								2%	2%	22%	2%	21%	5%
							grade 7 events	77977	75604	60973	78183	59054	86844
								84%	84%	44%	83%	48%	74%

2.2 Compared Parameters

Parameter	Planned	Actual	Parameter	Planned	Actual
Instrument	ACIS	ACIS	Obspar format version number	7	7
Detector	ACIS-235678	ACIS-235678	Obspar file type	PREDICTED	ACTUAL
Grating	NONE	NONE	Obspar update status	NONE	UPDATED
Data mode	FAINT	FAINT	Number of optional ACIS chips dropped	0	0
Observation mode	POINTING	POINTING	On-chip summing requested	N	N
[deg] Pointing RA	332.402277	332.3488124001257	Subarray requested	NONE	NONE
[deg] Pointing Dec	-65.300013	-65.2844271900876	Alternating exposures requested	N	N
[deg] Pointing Roll	114.223853	114.3319269197425	[s] Primary exposure time	0.000000	3.2
[mm] SIM focus pos	-0.684267	-0.6828225247311905			
[mm] SIM defocus	0	0.001444936568705701			
[mm] SIM translation stage pos	-190.132523	-190.1400660498719			
[mm] SIM translation stage offset	0	0.00754346686406393			
[s] Observation start time (MET)	137051282.184000	137049856.24956			
Observation start date	2002-05-06T05:46:58	2002-05-06T05:24:16			
[s] Observation end time (MET)	137065446.184000	137065761.1752			
Observation end date	2002-05-06T09:43:02	2002-05-06T09:49:21			
Read mode	TIMED	TIMED			

2.3 Aspect



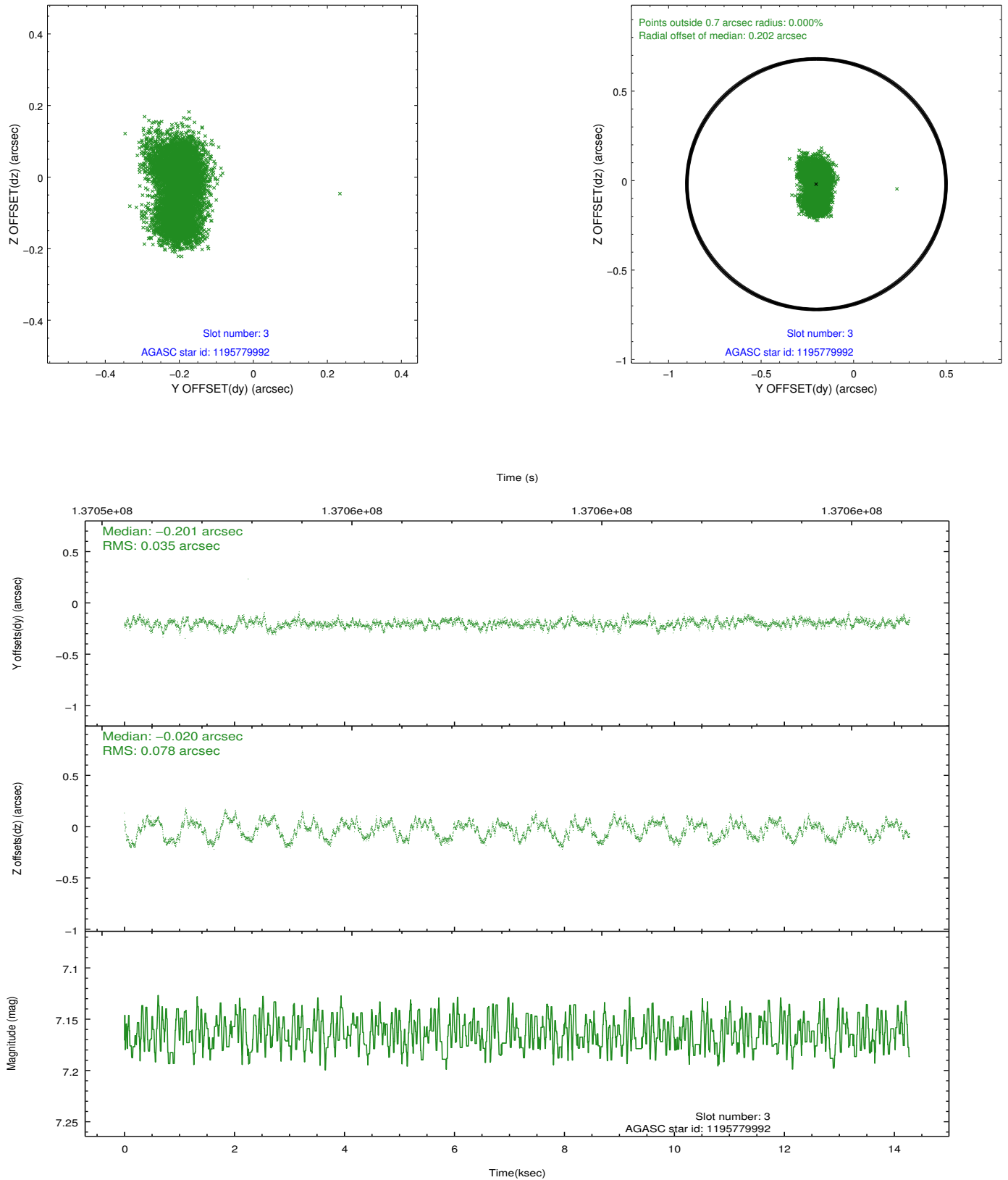


Slot Statistics

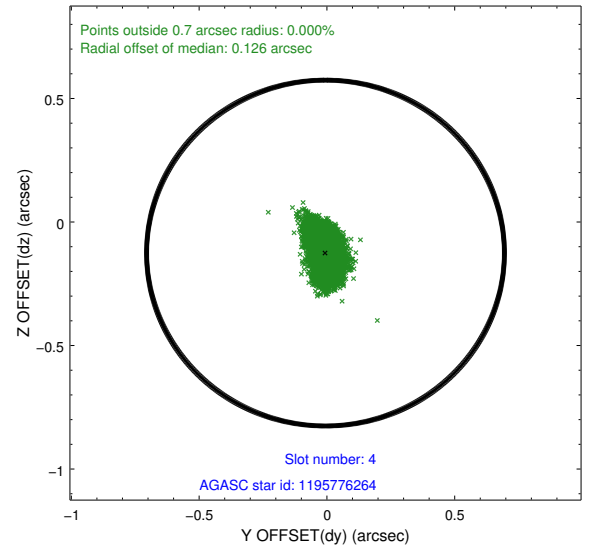
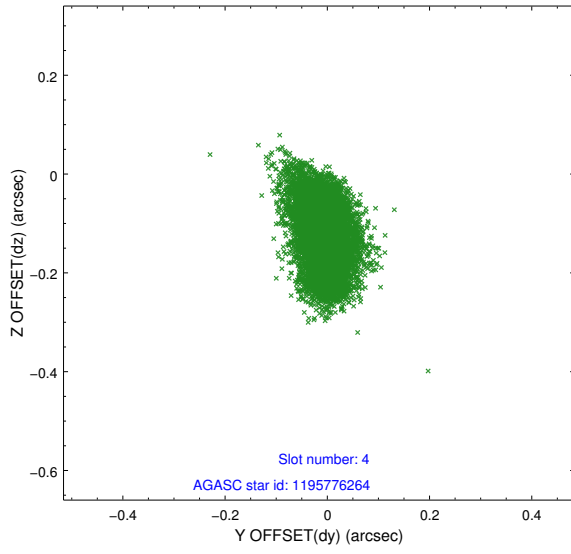
slot	status	id	mag	n_pts	med_dy	med_dz	dr1	dr2	ra	dec	mean_y	mean_z
0	FID	ACIS-S-2	7.11	3484	-0.024	0.011	0.007	0.011	0.000000	0.000000	-755.20	-1727.92
1	FID	ACIS-S-4	7.20	3484	-0.040	0.008	0.005	0.010	0.000000	0.000000	2157.89	180.26
2	FID	ACIS-S-5	7.24	3484	0.032	-0.011	0.006	0.012	0.000000	0.000000	-1807.59	174.24
3	GUIDE	1195779992	7.16	6965	-0.201	-0.020	0.093	0.147	331.940145	-65.103283	929.93	348.70
4	GUIDE	1195776264	7.42	6966	-0.006	-0.126	0.075	0.122	331.516114	-65.668289	-678.96	1745.87
5	GUIDE	1195386896	8.68	6963	-0.105	-0.021	0.217	0.310	331.784062	-64.977578	1439.55	383.80
6	GUIDE	1195782248	10.16	6682	0.145	-0.081	0.169	0.292	331.956274	-66.053242	-2208.20	1707.25
7	GUIDE	1195775008	10.35	6945	0.146	0.276	0.202	0.321	334.052993	-65.386139	-1328.57	-2116.49

2.4 Star Slots

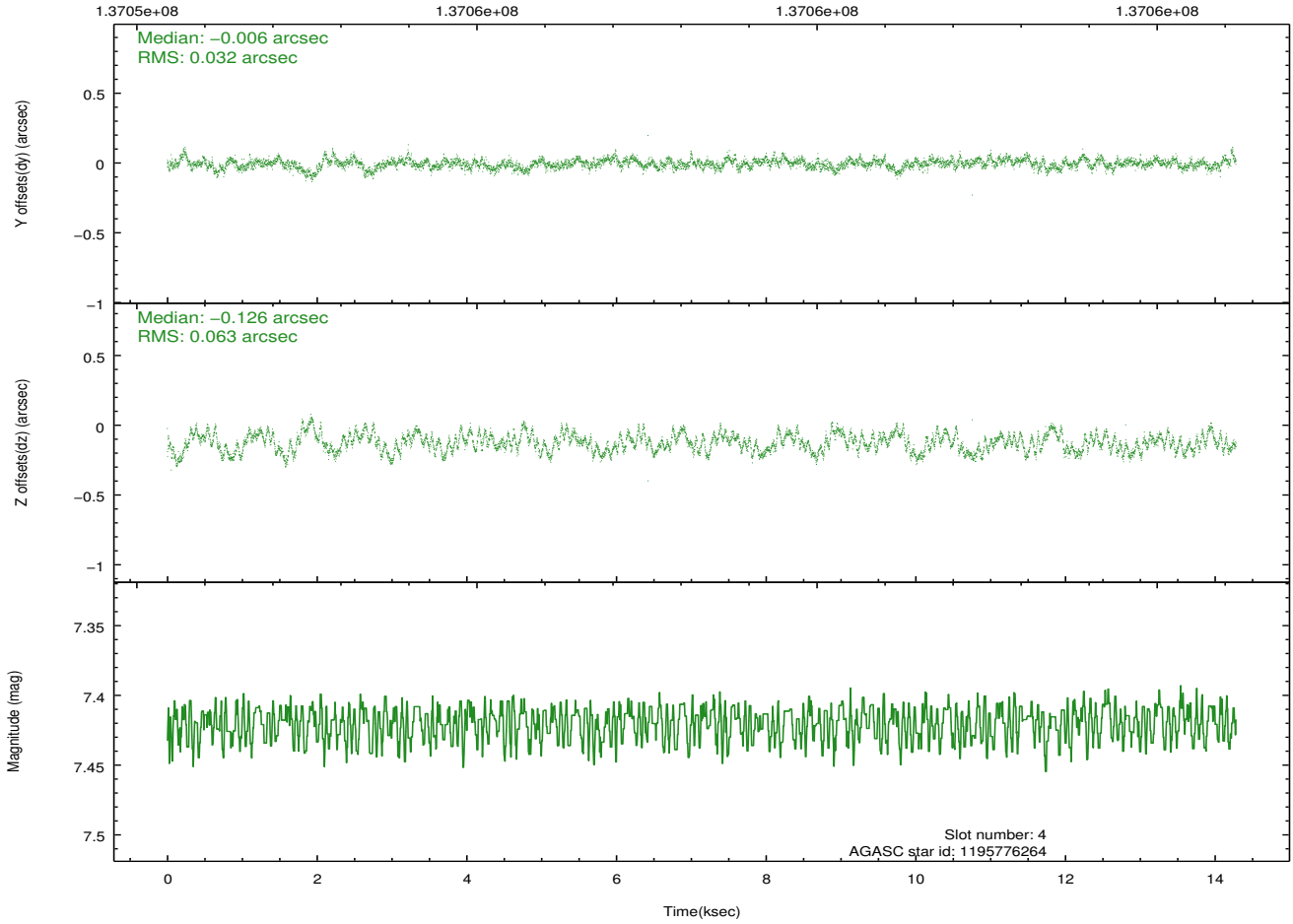
2.4.1 Slot 3



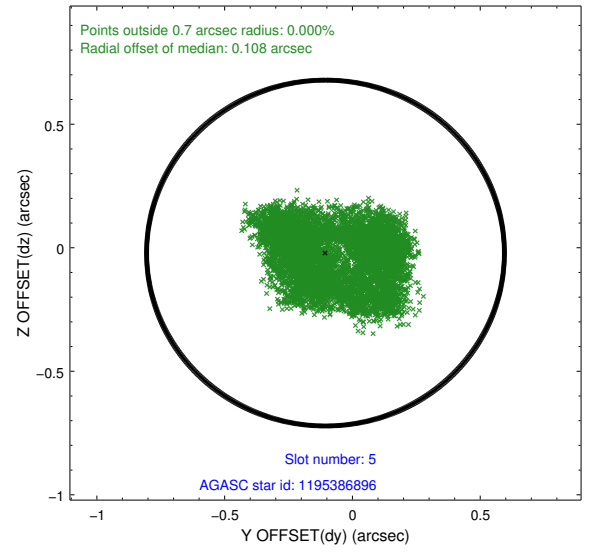
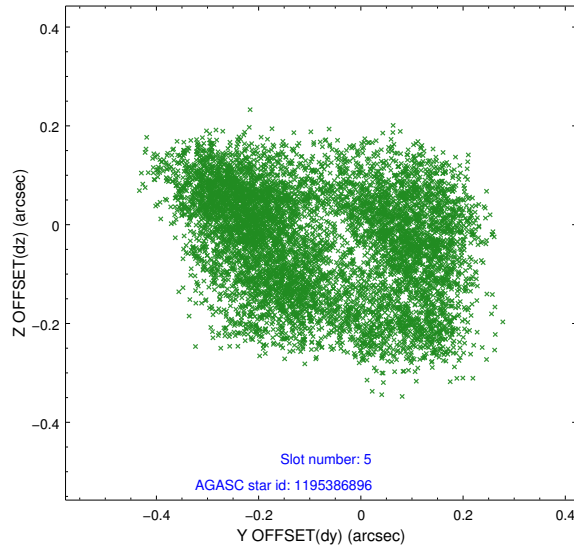
2.4.2 Slot 4



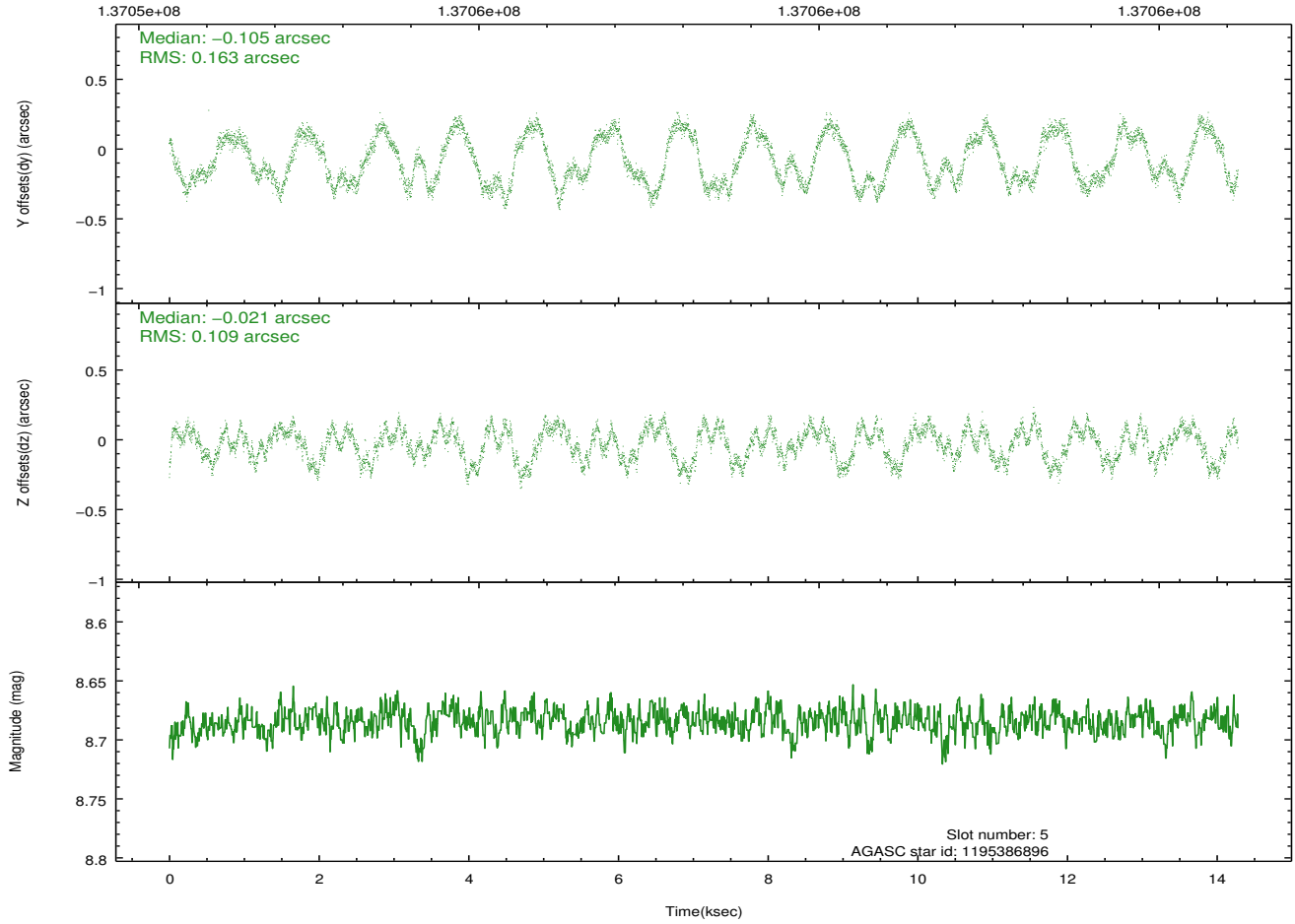
Time (s)



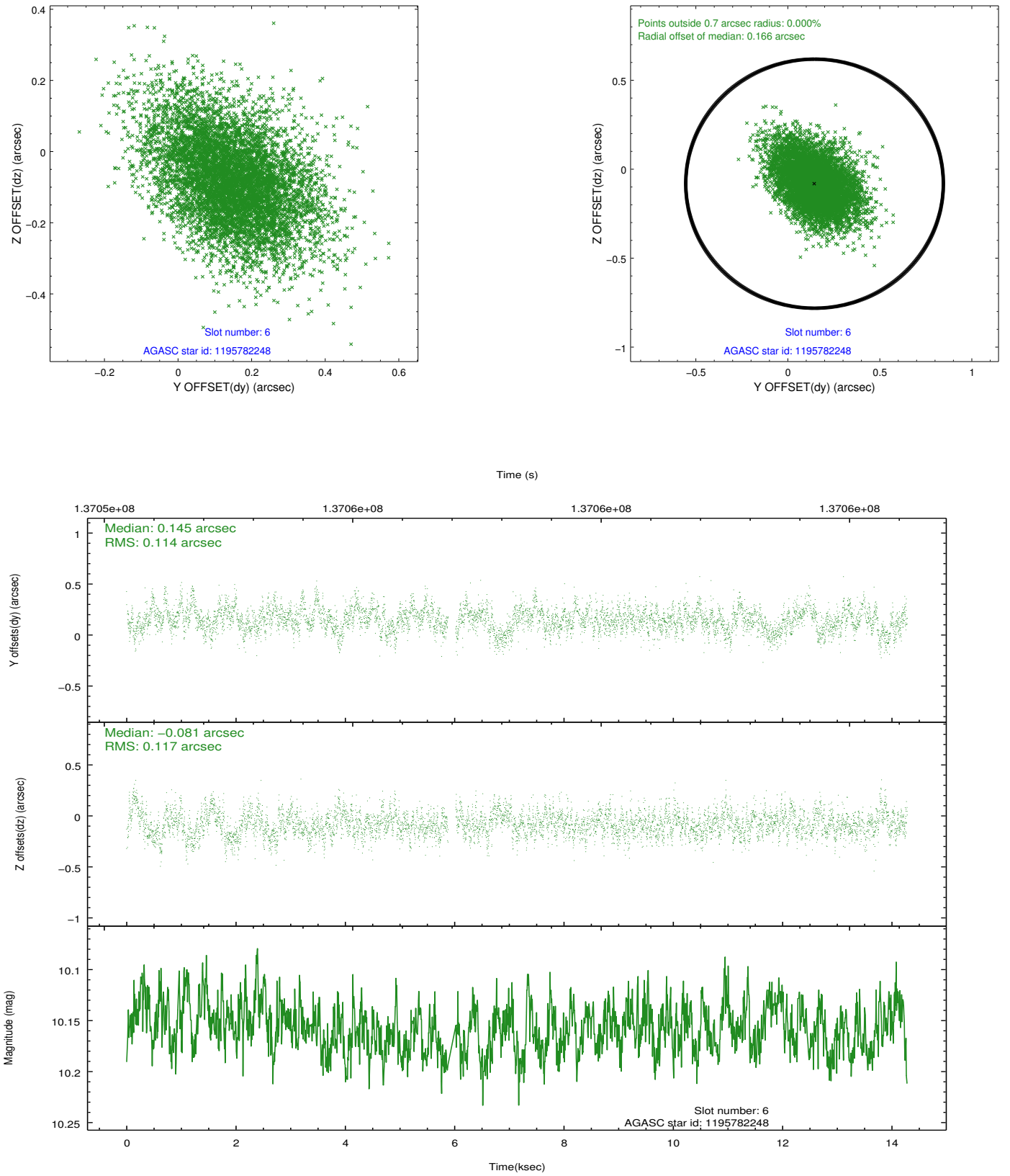
2.4.3 Slot 5



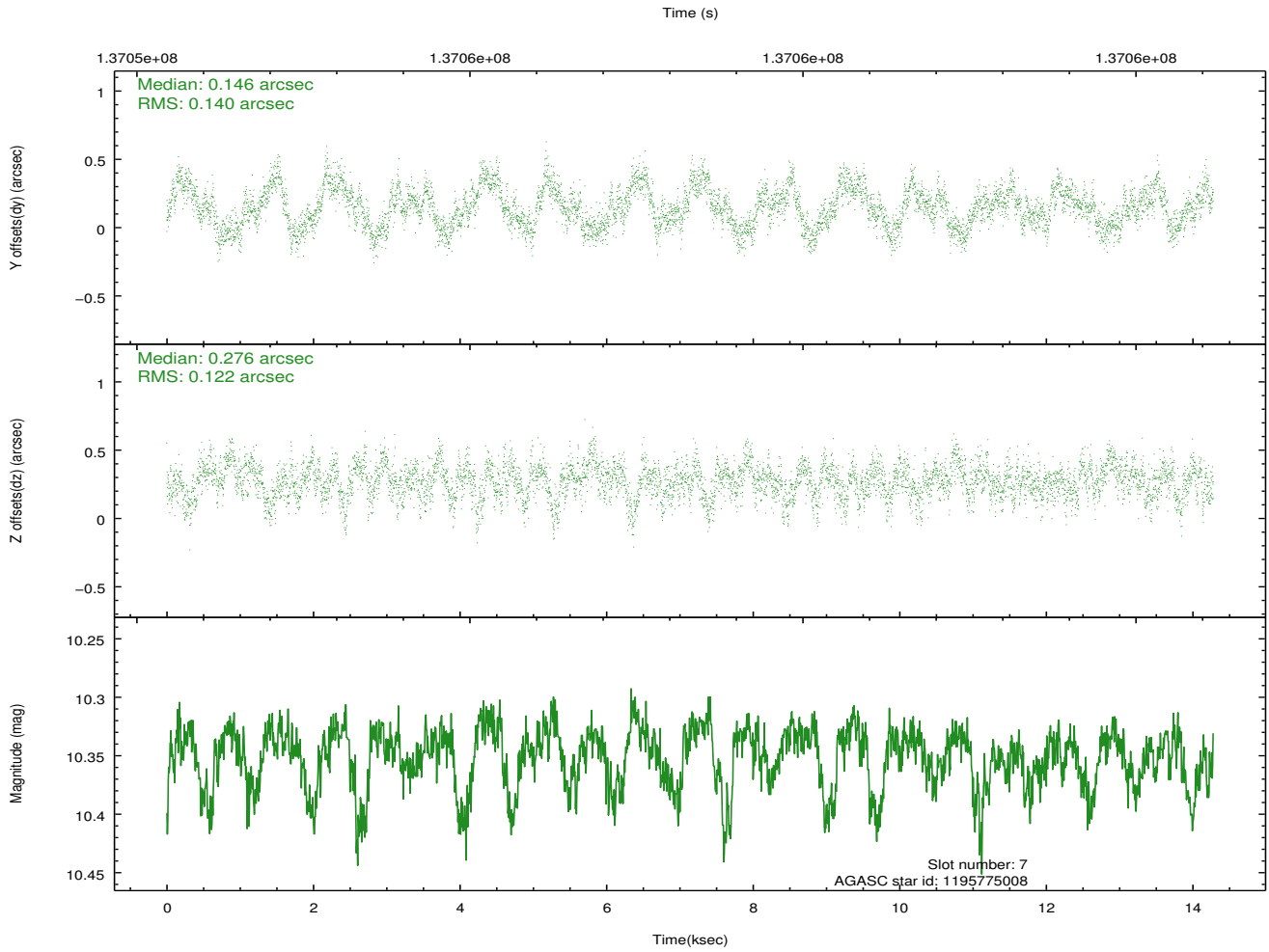
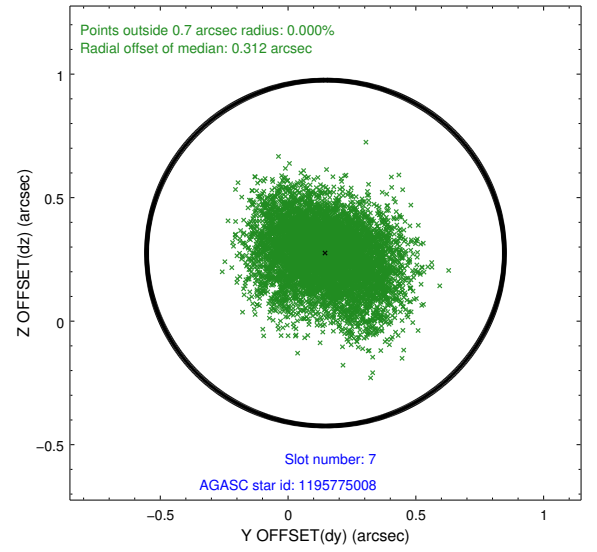
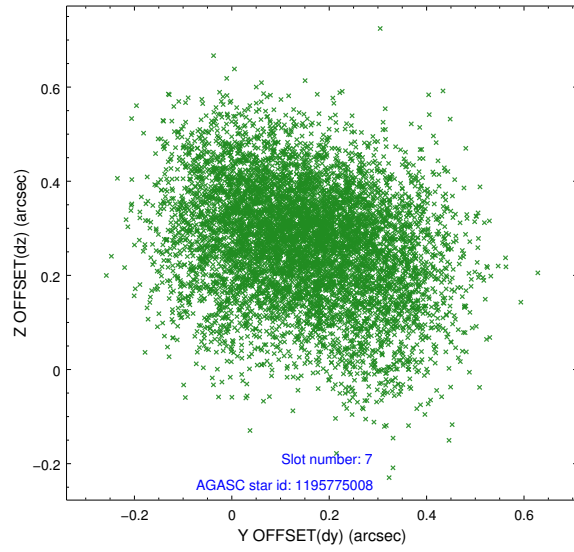
Time (s)



2.4.4 Slot 6

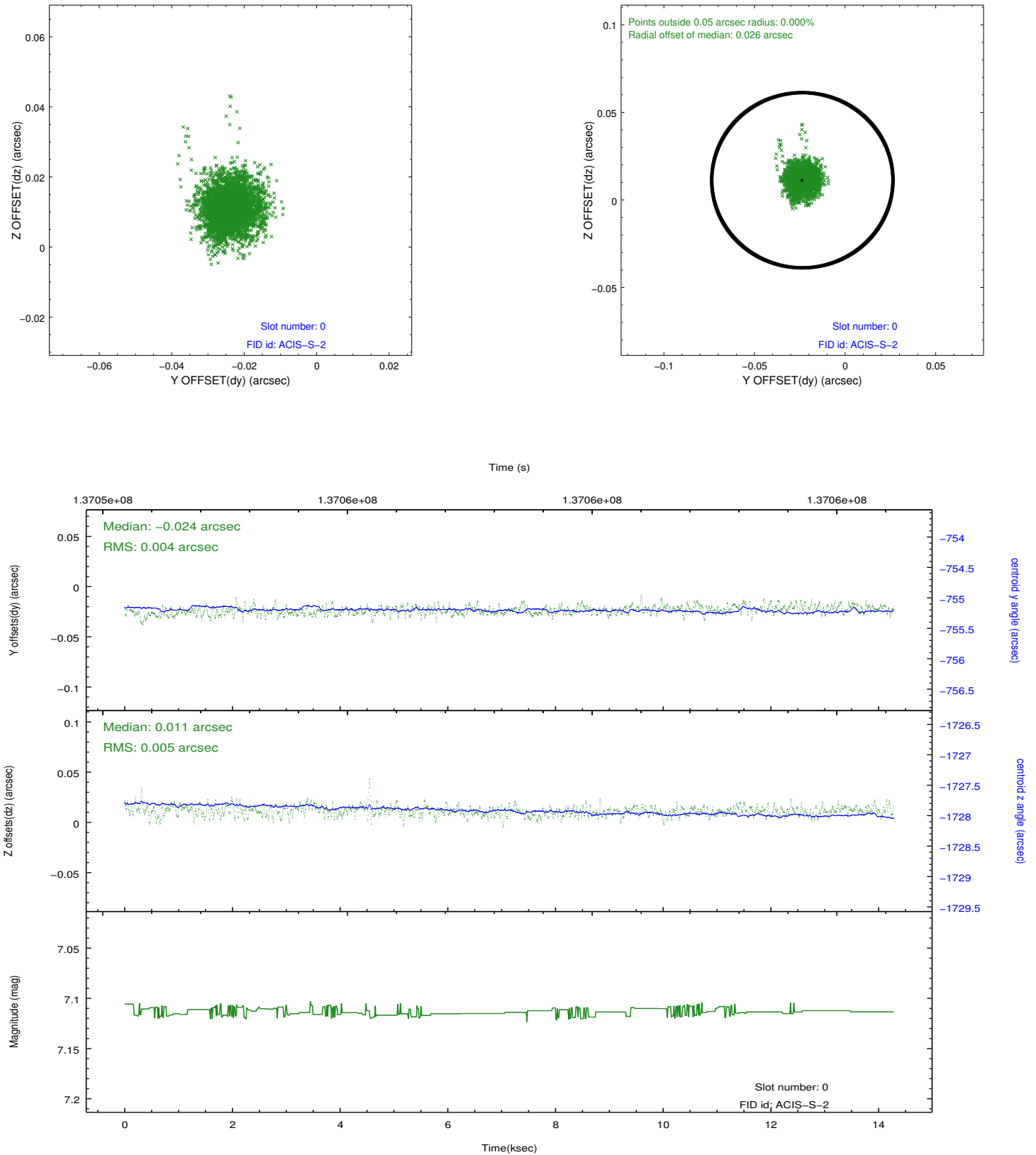


2.4.5 Slot 7

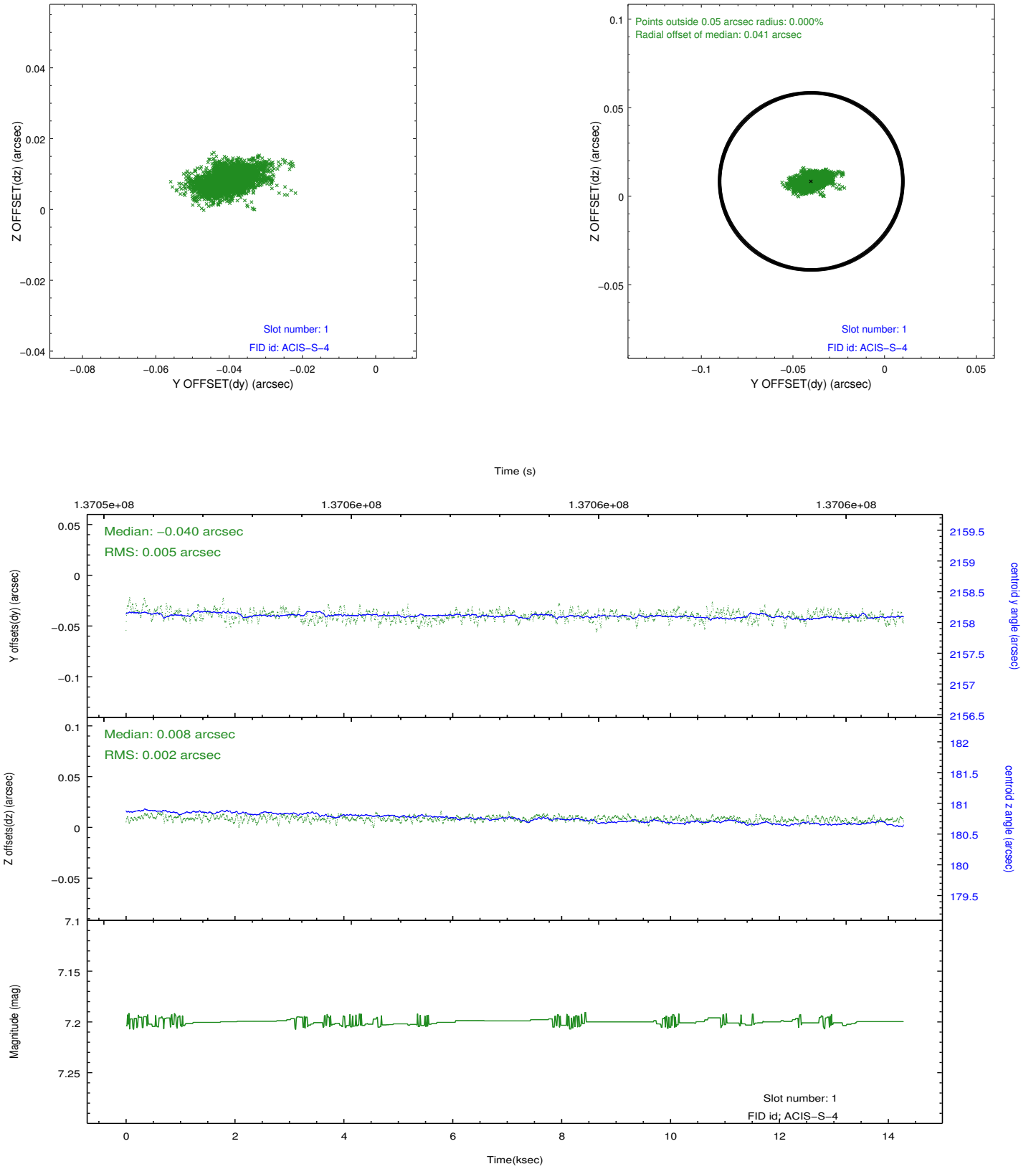


2.5 FID Slots

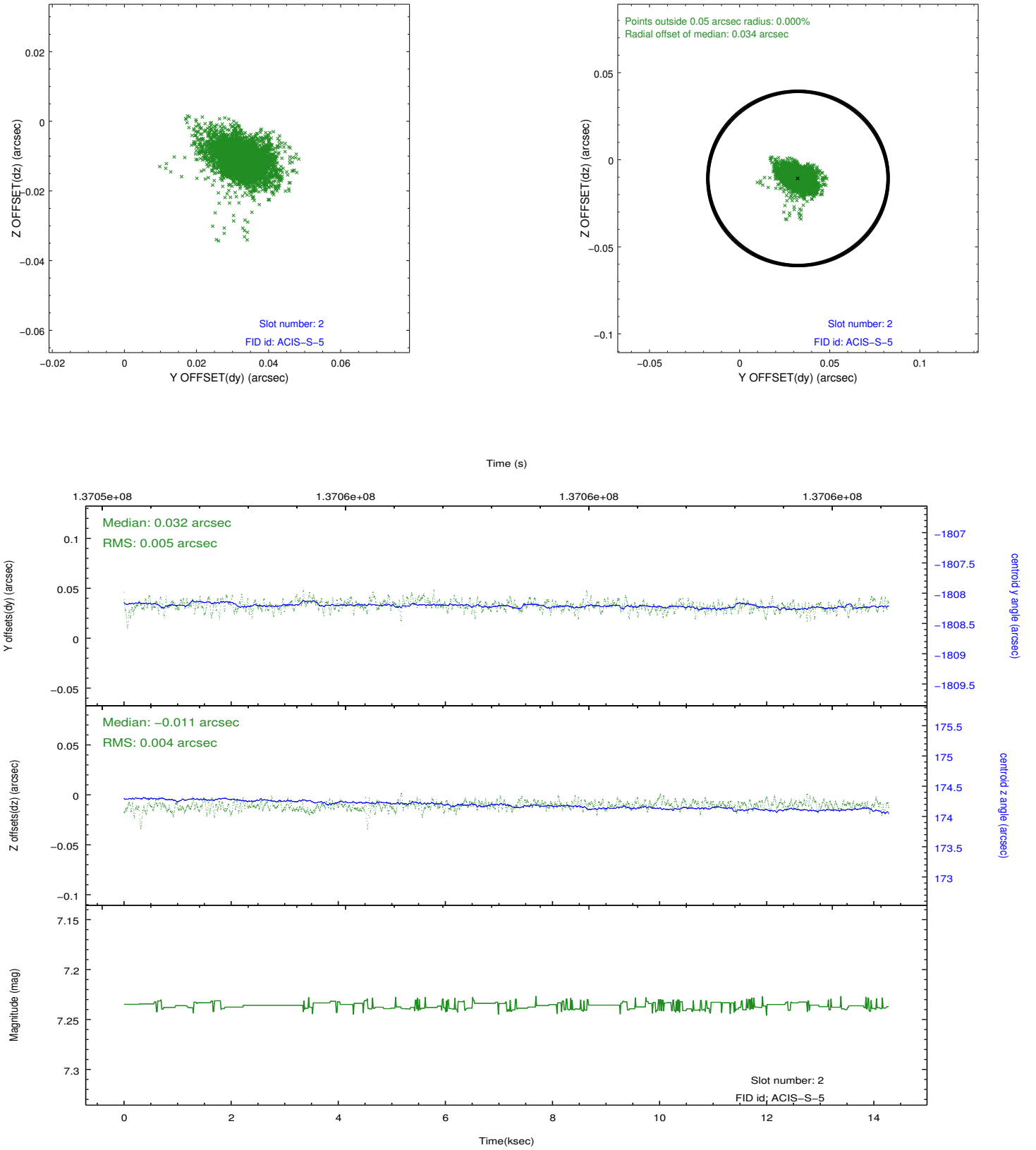
2.5.1 Slot 0



2.5.2 Slot 1



2.5.3 Slot 2



A Summary

A.1 Status

V&V Scientist	Beth Sundheim
V&V Date (YYYY-MM-DD)	2012.10.15
V&V Edition	1
V&V Disposition and Status	OK
V&V Charge Time	13.916

A.2 Comments