

# V&V Reference Report

## L2 ASCDS Version : 7.6.9

Observation 3493 - L2 Version 001  
Chandra X-Ray Center

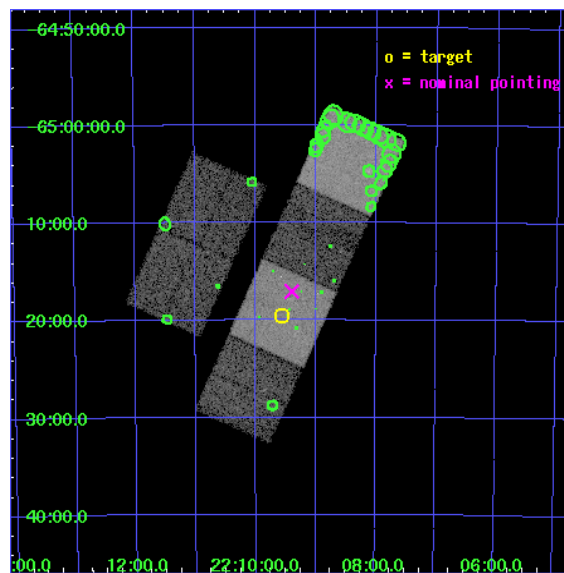
L2 Processing Date : Sep 15 2006

## Contents

<b>1</b>	<b>Front</b>	<b>2</b>
<b>2</b>	<b>OBI</b>	<b>3</b>
2.1	OBI . . . . .	3
2.1.1	Images . . . . .	3
2.1.2	Bias . . . . .	3
2.1.3	Parameters . . . . .	4
2.1.4	Events . . . . .	4
2.2	Compared Parameters . . . . .	5
2.3	Aspect . . . . .	6
2.4	Star Slots . . . . .	9
2.4.1	Slot 3 . . . . .	9
2.4.2	Slot 4 . . . . .	10
2.4.3	Slot 5 . . . . .	11
2.4.4	Slot 6 . . . . .	12
2.4.5	Slot 7 . . . . .	13
2.5	FID Slots . . . . .	14
2.5.1	Slot 0 . . . . .	14
2.5.2	Slot 1 . . . . .	15
2.5.3	Slot 2 . . . . .	16
<b>3</b>	<b>Point Sources</b>	<b>17</b>
<b>A</b>	<b>Summary</b>	<b>18</b>
A.1	Status . . . . .	18
A.2	Comments . . . . .	18

# 1 Front

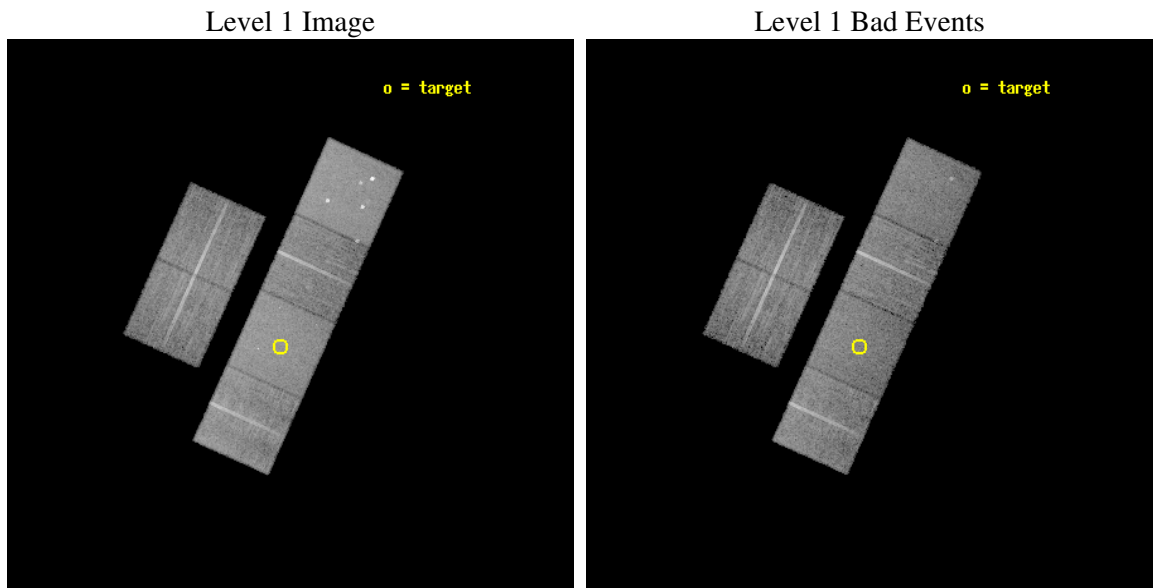
seq_num	500295
obs_id	3493
title	CHANDRA ARCSECOND LOCALIZATION OF THE X-RAY FLASH XRF020427
observer	Dr Derek Fox
object	XRF020427
dtcycle	0
cycle	P
ra_targ	332.39
dec_targ	-65.326806
ra_nom	332.348812405
dec_nom	-65.284427196736
roll_nom	114.33192692029
revision	3
ontime	13913.558987916
livetime	13737.377126271
ontime2	13916.799948156
ontime3	13916.799948156
ontime5	13916.799948156
ontime6	13916.799948156
ontime7	13913.558987916
ontime8	13910.318047583
l2events	139531



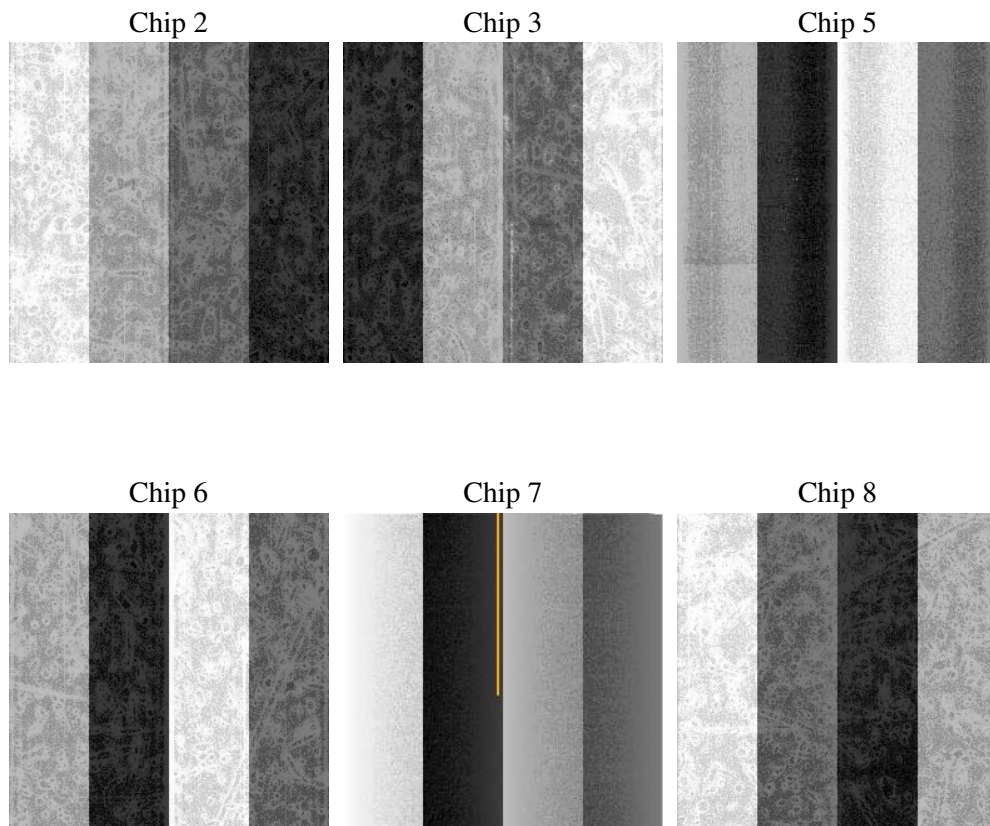
## 2 OBI

### 2.1 OBI

#### 2.1.1 Images



#### 2.1.2 Bias



### 2.1.3 Parameters

obi_num	0
ascdsver	7.6.9
caldsver	3.2.3
date	2006-09-15T03:01:04
revision	3

sched_exp_time	14164.561000
ontime	13920.097187012
ontime2	13923.338117331
ontime3	13923.338117331
ontime5	13923.338147253
ontime6	13923.338117331
ontime7	13920.097187012
ontime8	13916.856127113
l1events	649895

### 2.1.4 Events

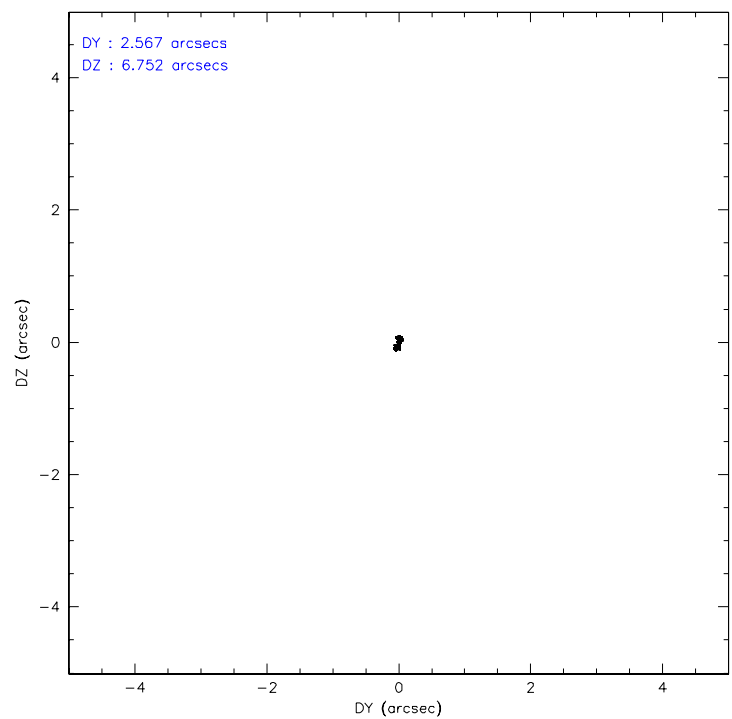
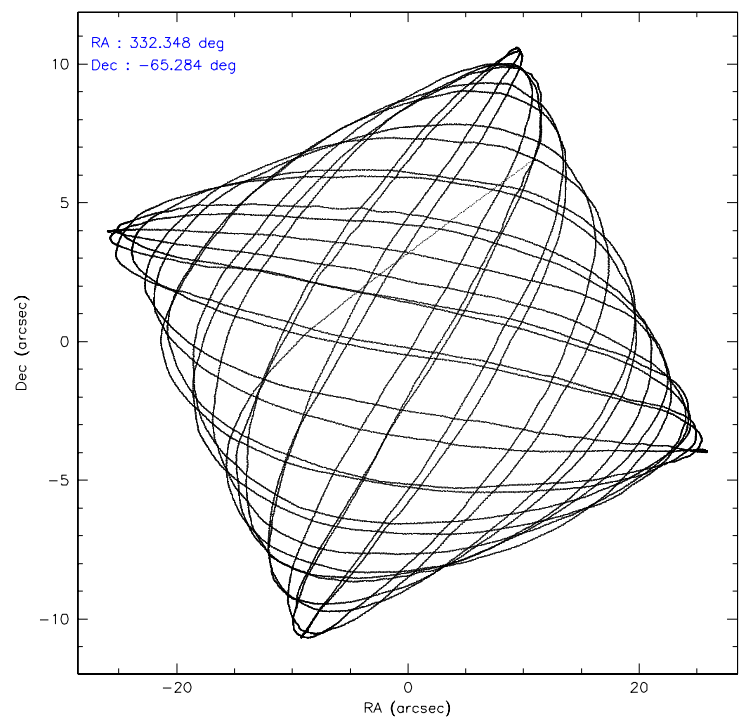
	ccd 2	ccd 3	ccd 5	ccd 6	ccd 7	ccd 8
level 1 events	91923	89988	136918	93327	121192	116547
rejected events	81217	79236	73756	82224	74304	91969
rejected %	88%	88%	53%	88%	61%	78%

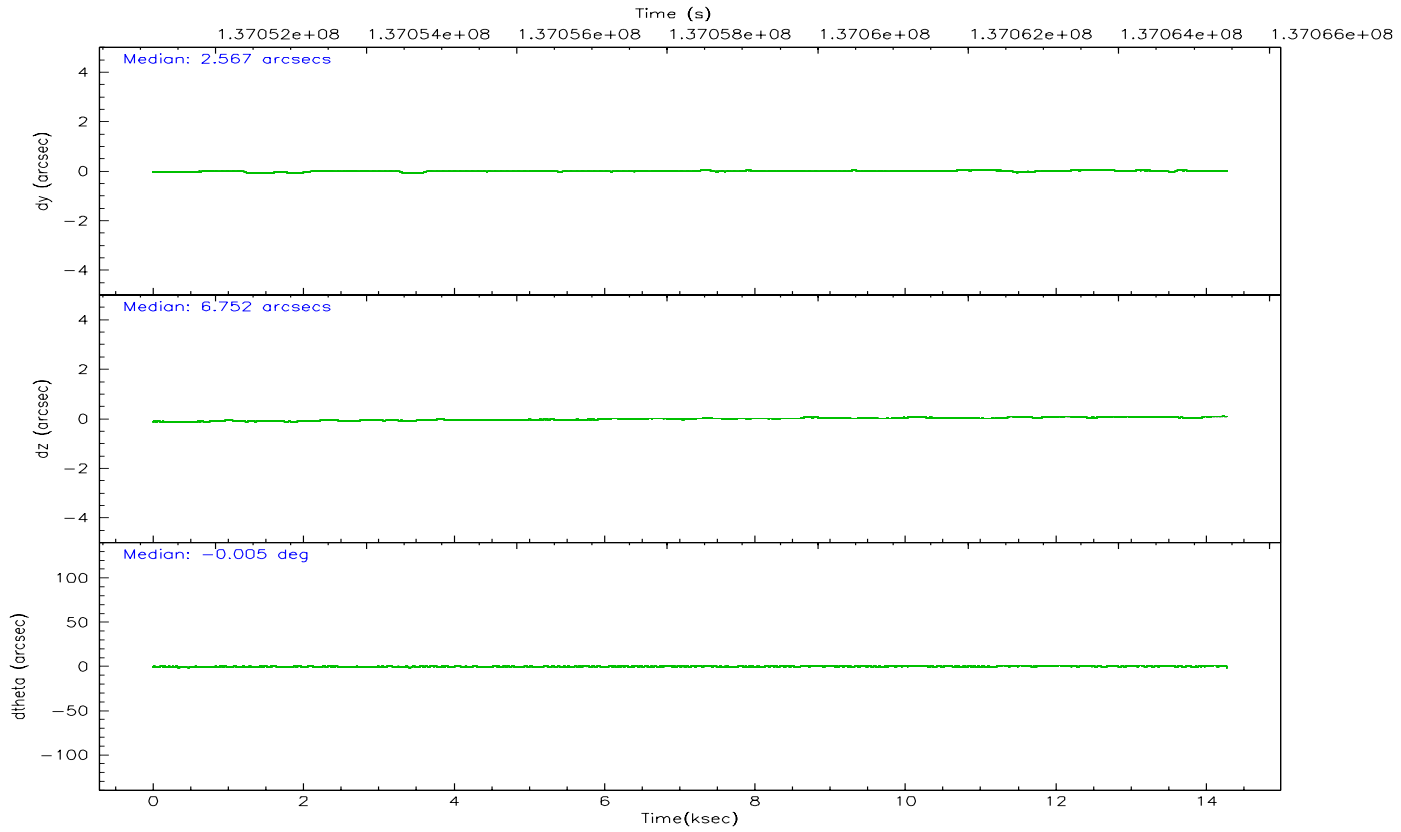
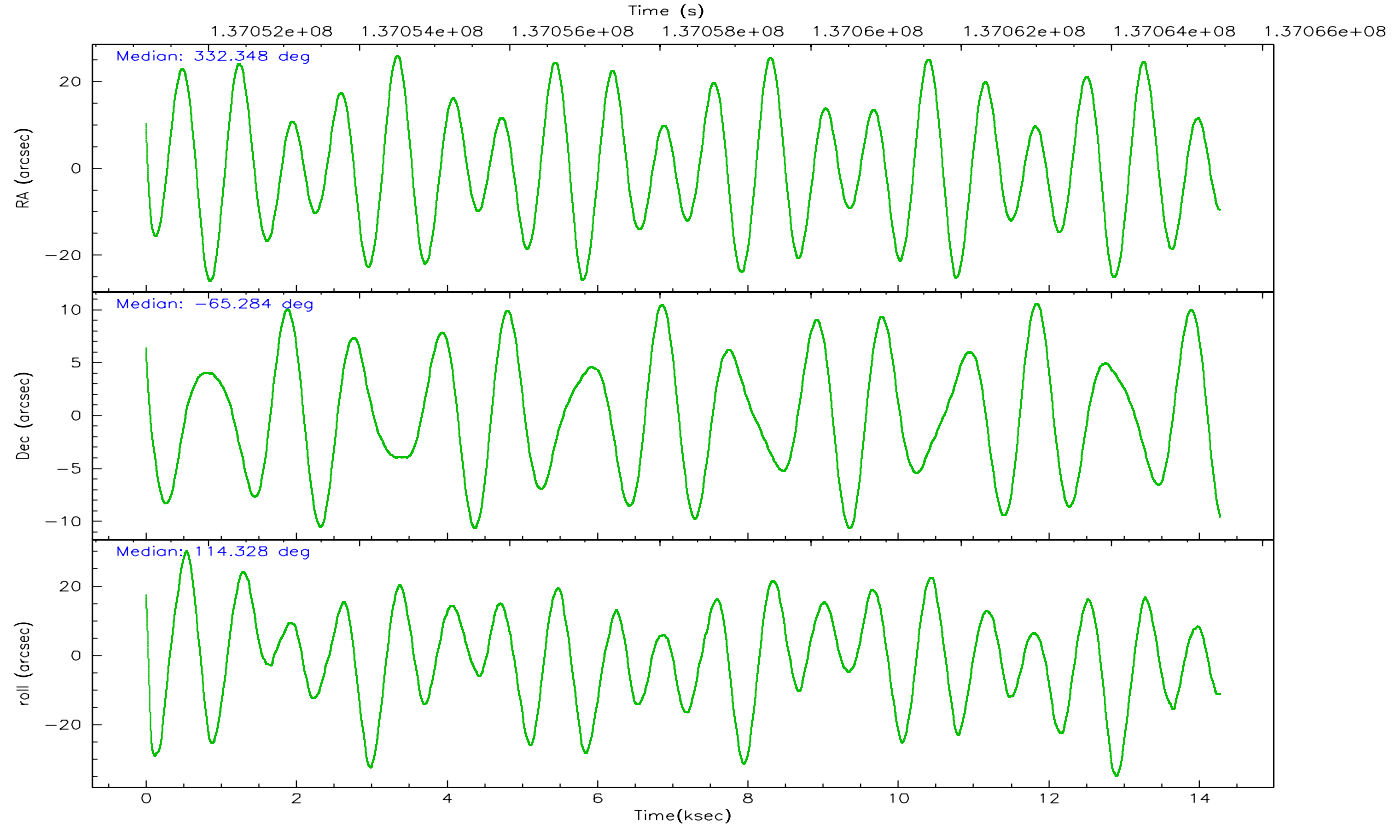
	ccd 2	ccd 3	ccd 5	ccd 6	ccd 7	ccd 8
grade 0 events	4554	4610	8384	4490	3239	8004
	4%	5%	6%	4%	2%	6%
grade 1 events	55	43	449	50	71	83
	0%	0%	0%	0%	0%	0%
grade 2 events	2369	2154	19224	2325	11614	5243
	2%	2%	14%	2%	9%	4%
grade 3 events	931	969	1305	1096	2420	2730
	1%	1%	0%	1%	1%	2%
grade 4 events	979	1016	1407	1063	2371	2608
	1%	1%	1%	1%	1%	2%
grade 5 events	3182	3582	6506	3985	7960	5040
	3%	3%	4%	4%	6%	4%
grade 6 events	1876	2010	32880	2135	27267	5995
	2%	2%	24%	2%	22%	5%
grade 7 events	77977	75604	66763	78183	66250	86844
	84%	84%	48%	83%	54%	74%

## 2.2 Compared Parameters

Parameter	Planned	Actual	Parameter	Planned	Actual
Instrument	ACIS	ACIS	Obspar format version number	6	6
Detector	ACIS-235678	ACIS-235678	Obspar file type	PREDICTED	ACTUAL
Grating	NONE	NONE	Obspar update status	NONE	UPDATED
Observation mode	POINTING	POINTING	Number of optional ACIS chips dropped	0	0
Pointing RA	332.402277	332.3488124049956	On-chip summing requested	N	N
Pointing Dec	-65.300013	-65.28442719673627	Subarray requested	NONE	NONE
Pointing Roll	114.223853	114.3319269202941	Alternating exposures requested	N	N
SIM focus pos (mm)	-0.684267	-0.6828225247311905	Primary exposure time	0.000000	3.2
SIM defocus (mm)	0	0.001444936568705701			
SIM translation stage pos (mm)	-190.132523	-190.1400660498719			
SIM translation stage offset (mm)	0	0.00754346686406393			
Observation start time	137051282.184000	137049856.24956			
Observation start date	2002-05-06T05:46:58	2002-05-06T05:24:16			
Observation end time	137065446.184000	137065761.1752			
Observation end date	2002-05-06T09:43:02	2002-05-06T09:49:21			
Read mode	TIMED	TIMED			

## 2.3 Aspect





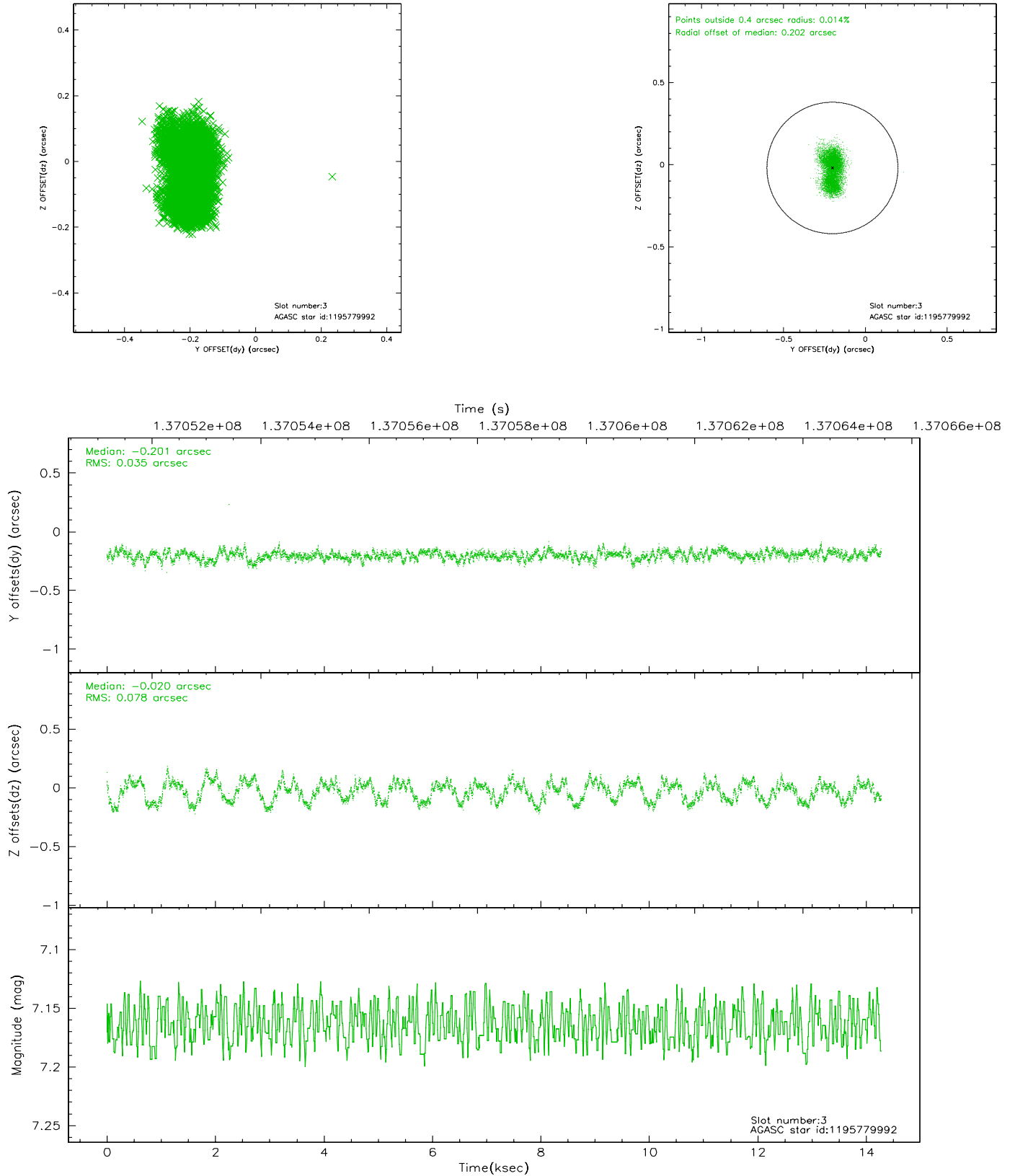
### Slot Statistics

slot	status	id	mag	n_pts	med_dy	med_dz	dr1	dr2	ra	dec	mean_y	mean_z
0	FID	ACIS-S-2	7.11	3484	-0.012	0.035	0.006	0.011	0.000000	0.000000	-755.19	-1727.88
1	FID	ACIS-S-4	7.20	3484	-0.082	-0.003	0.005	0.008	0.000000	0.000000	2157.85	180.26
2	FID	ACIS-S-5	7.24	3484	0.063	-0.022	0.006	0.011	0.000000	0.000000	-1807.56	174.24
3	GUIDE	1195779992	7.16	6965	-0.201	-0.020	0.093	0.147	331.940145	-65.103283	929.93	348.70
4	GUIDE	1195776264	7.42	6966	-0.006	-0.126	0.075	0.122	331.516114	-65.668289	-678.96	1745.87
5	GUIDE	1195386896	8.68	6963	-0.105	-0.021	0.217	0.310	331.784062	-64.977578	1439.55	383.80
6	GUIDE	1195782248	10.16	6682	0.145	-0.081	0.169	0.292	331.956274	-66.053242	-2208.20	1707.25
7	GUIDE	1195775008	10.35	6945	0.146	0.276	0.202	0.321	334.052993	-65.386139	-1328.57	-2116.49

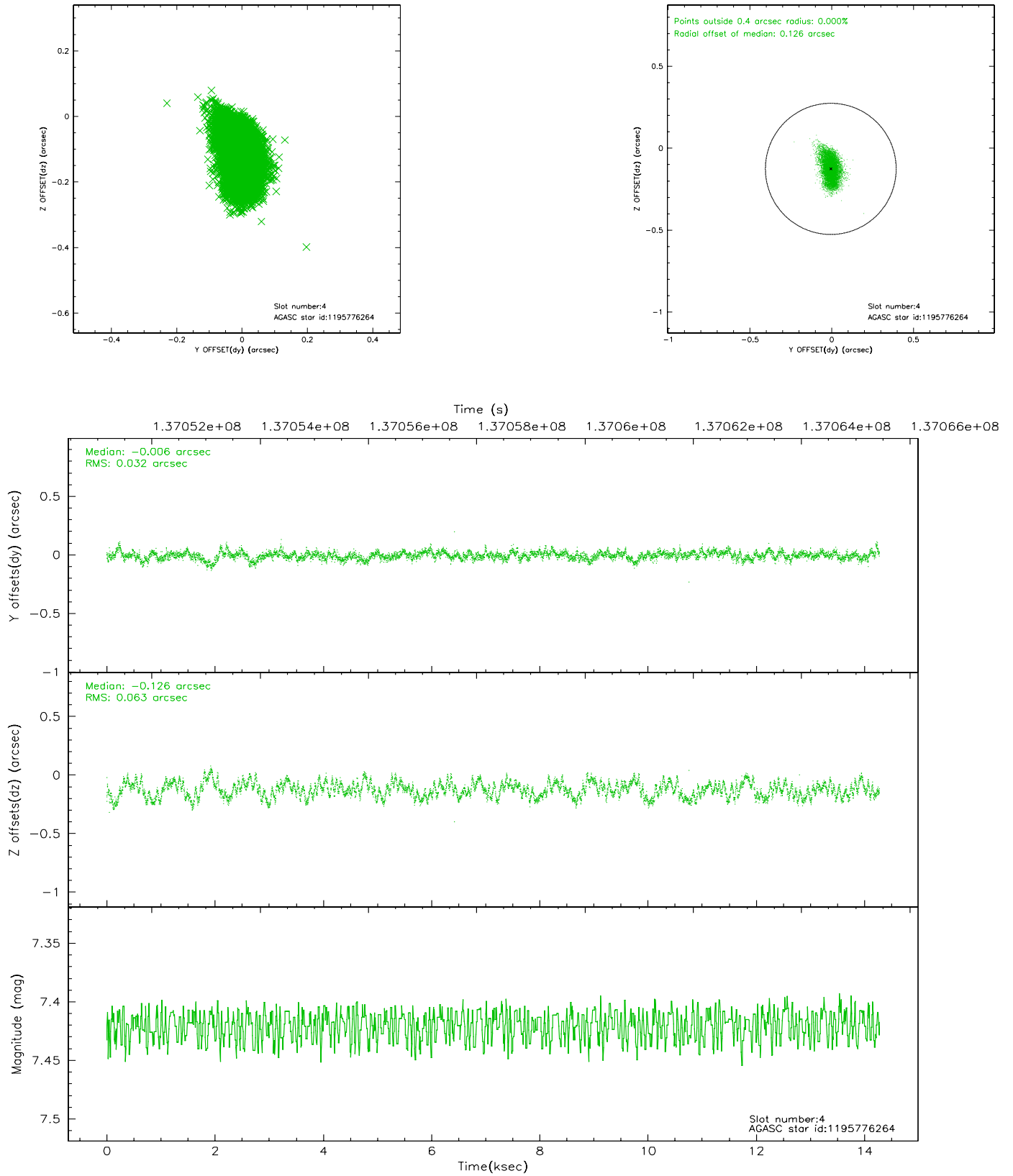


## 2.4 Star Slots

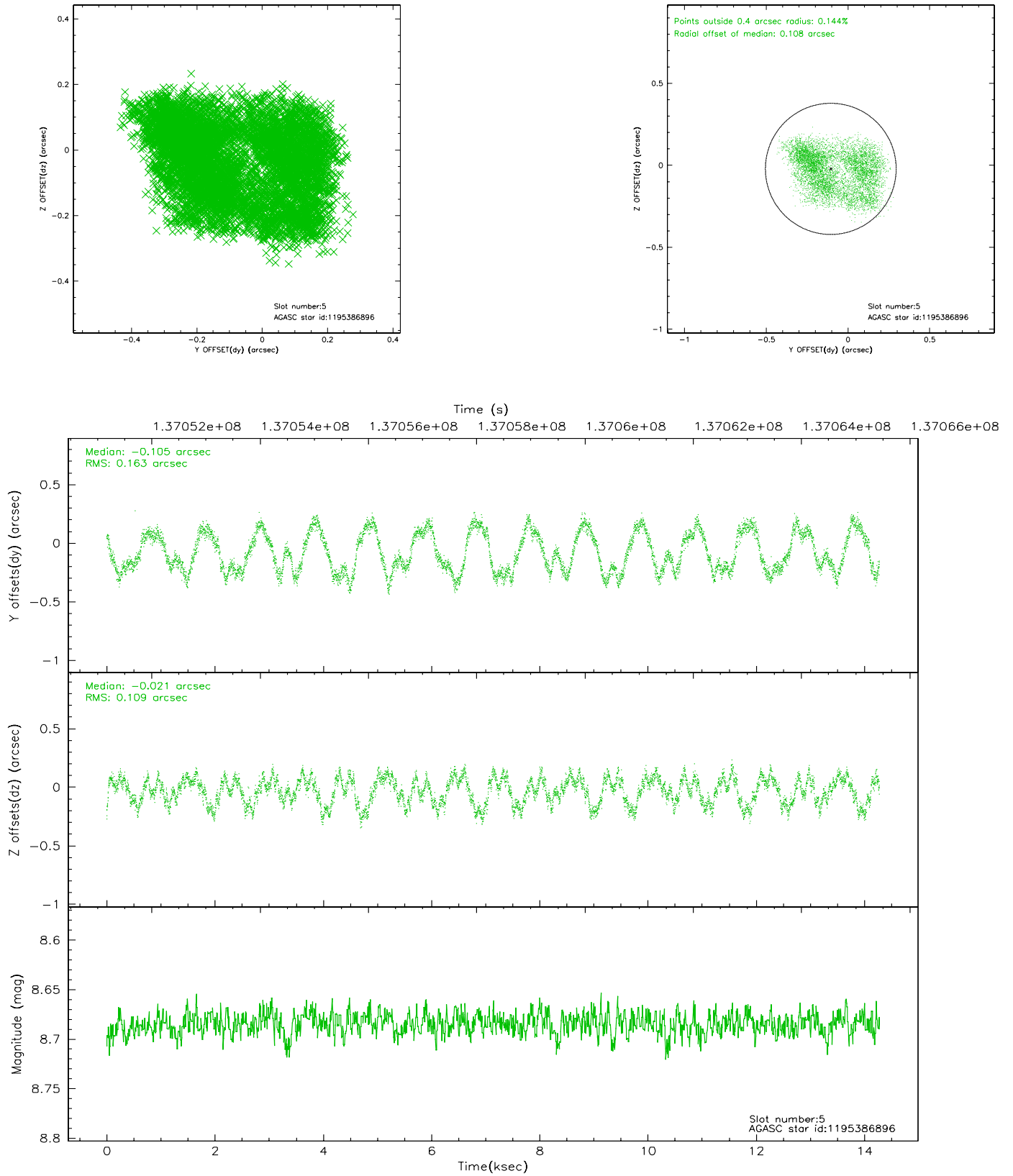
### 2.4.1 Slot 3



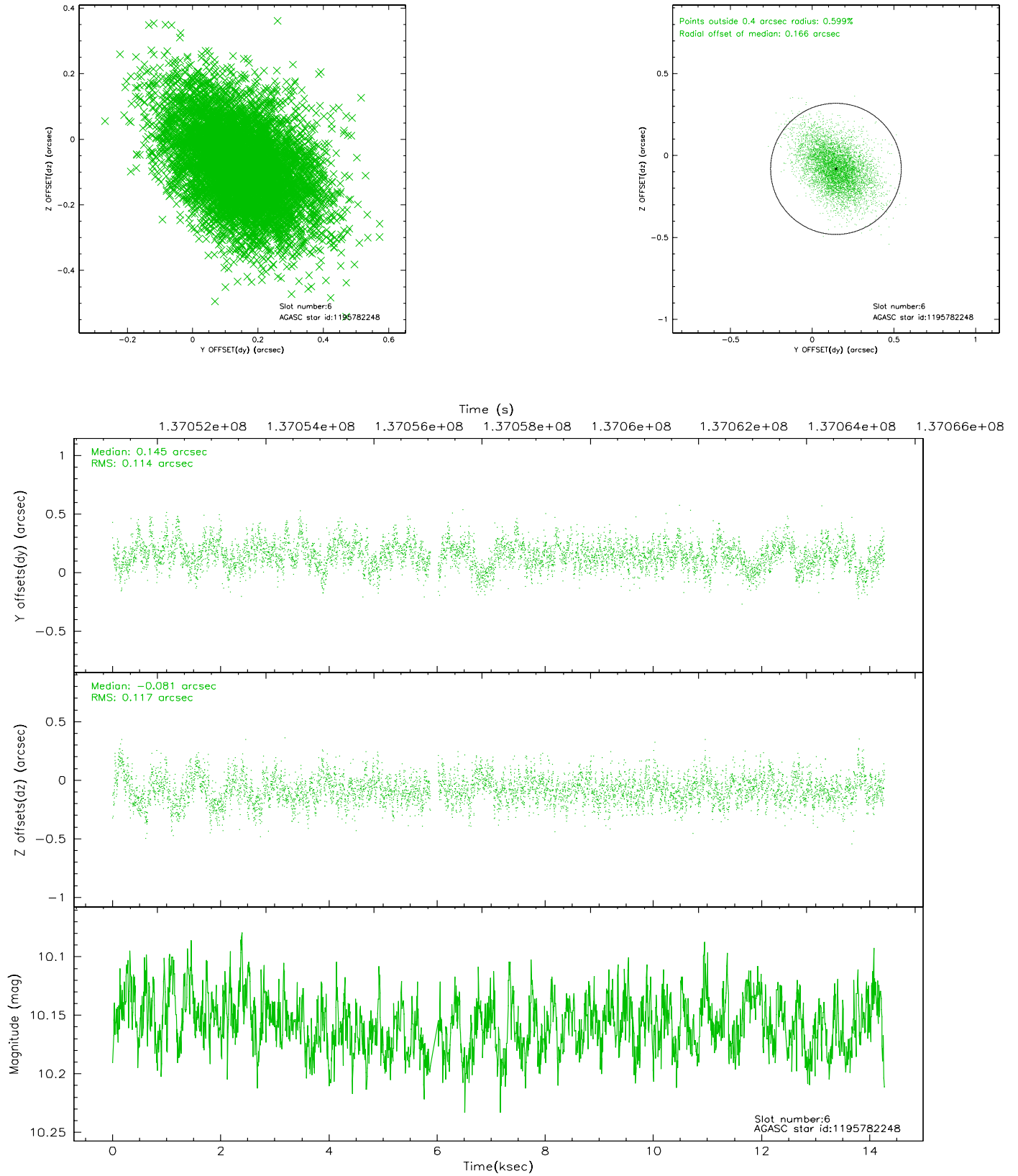
## 2.4.2 Slot 4



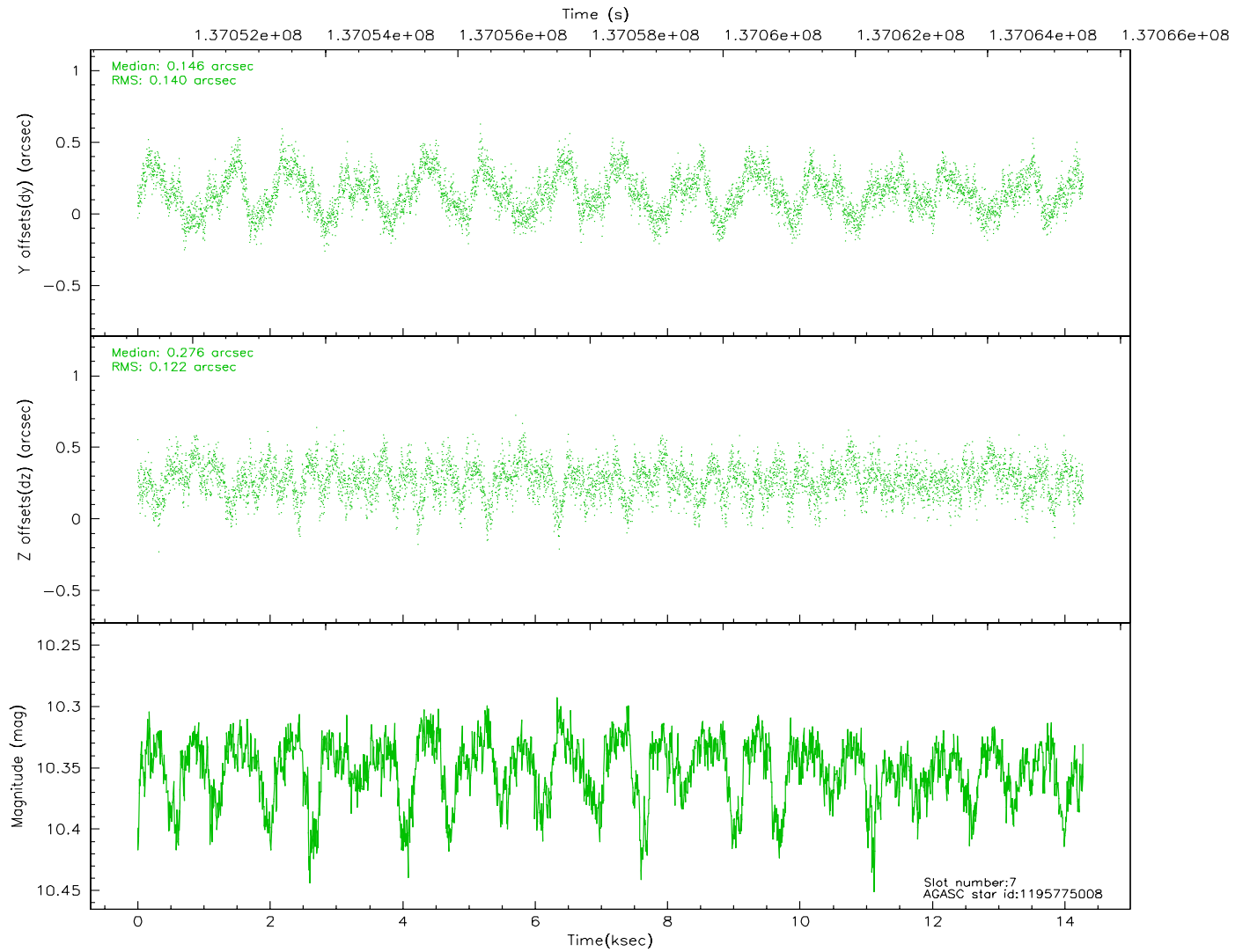
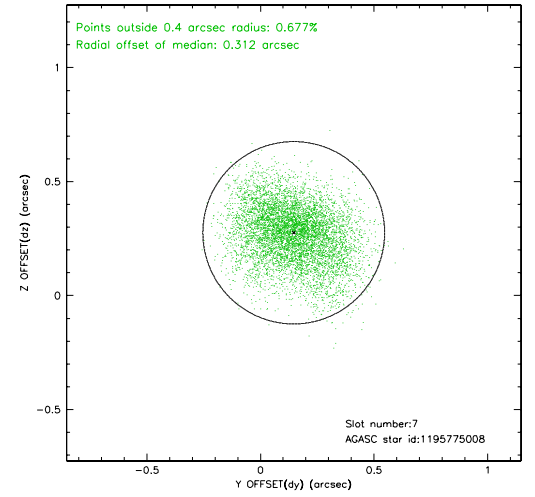
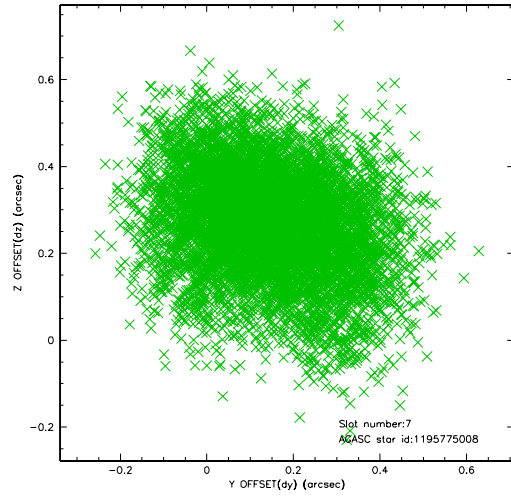
### 2.4.3 Slot 5



## 2.4.4 Slot 6

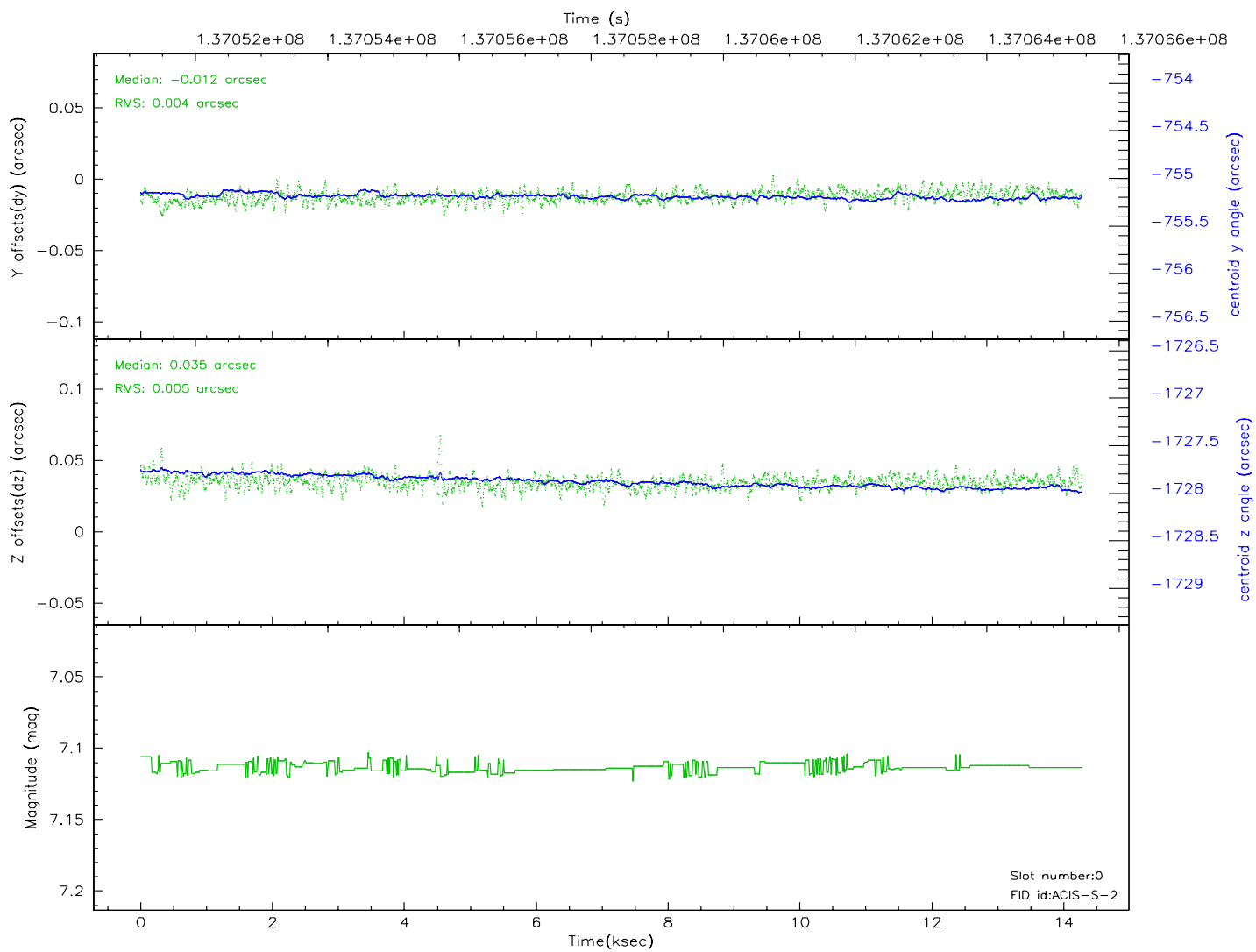
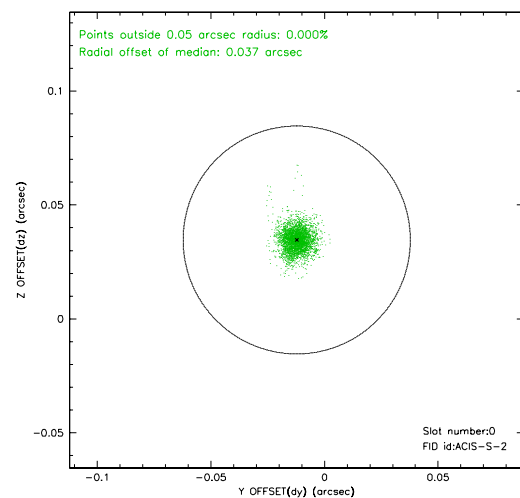
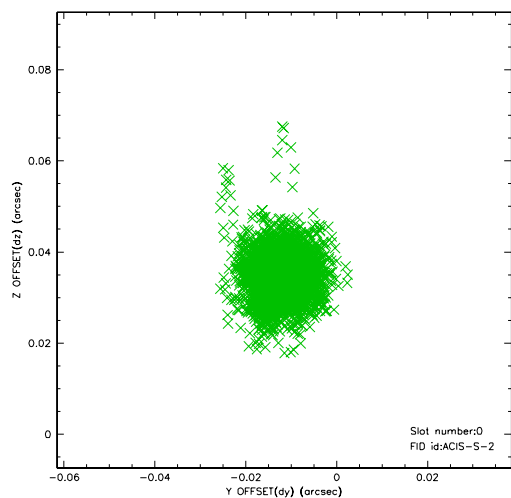


## 2.4.5 Slot 7

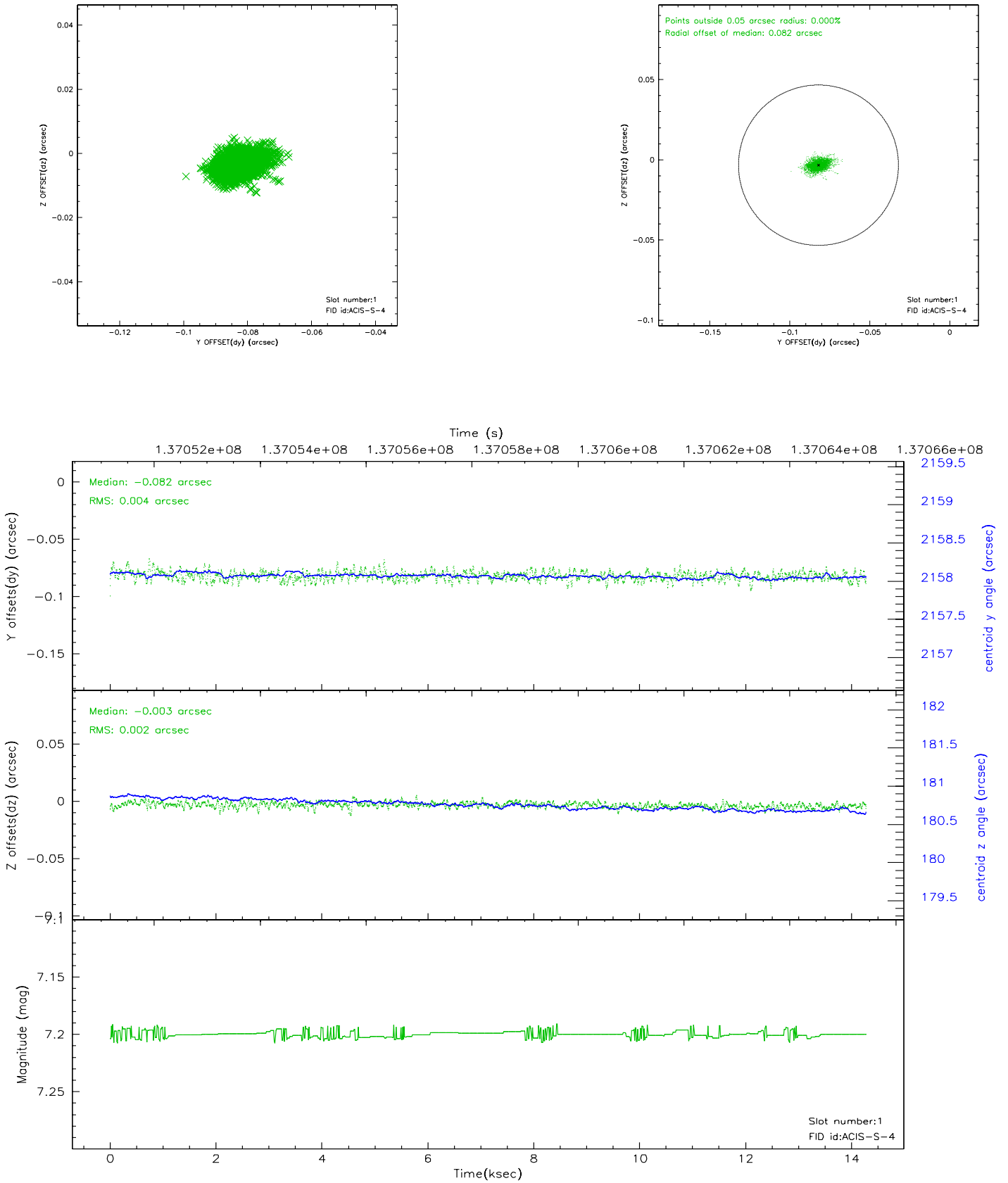


## 2.5 FID Slots

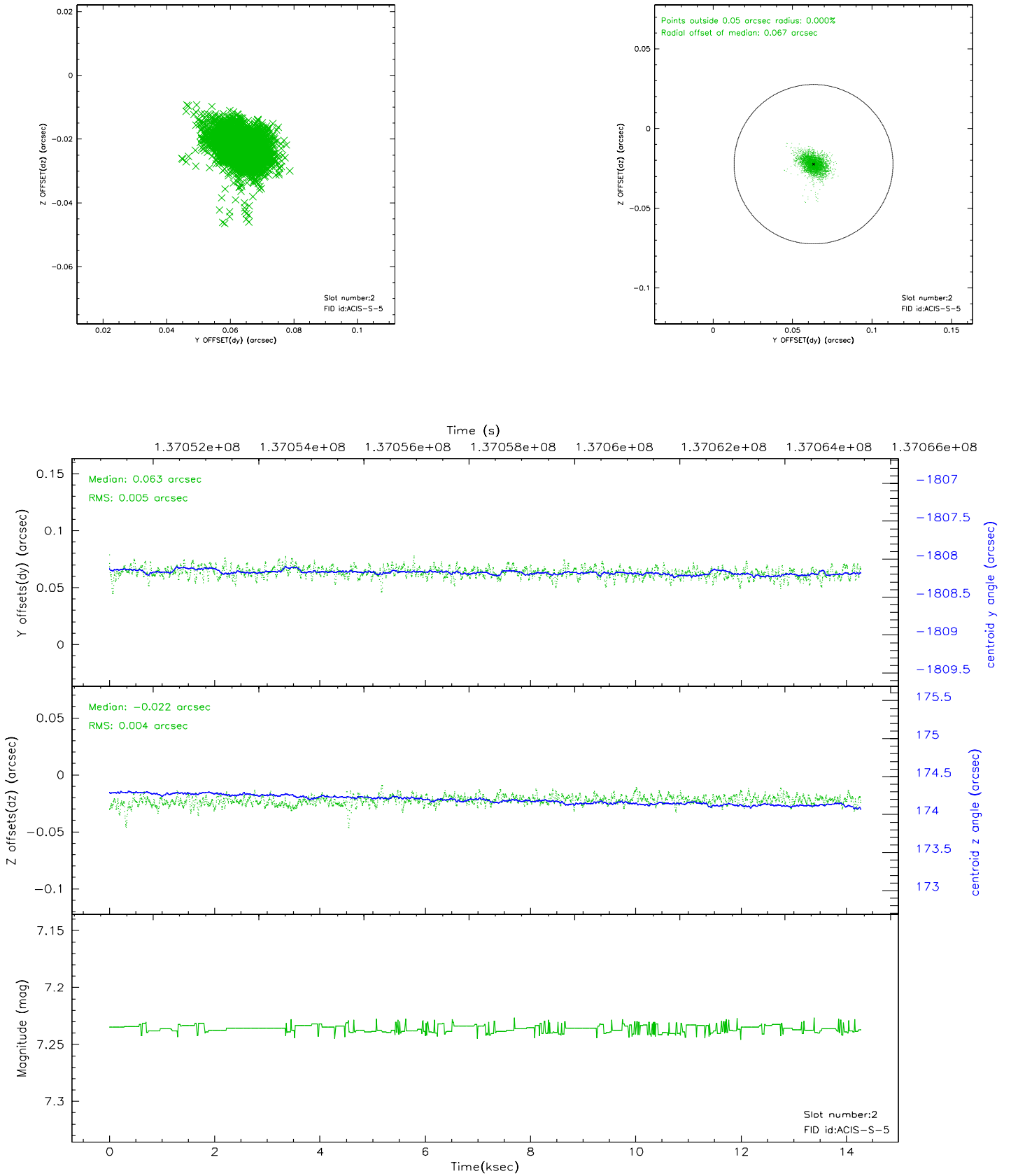
### 2.5.1 Slot 0



## 2.5.2 Slot 1

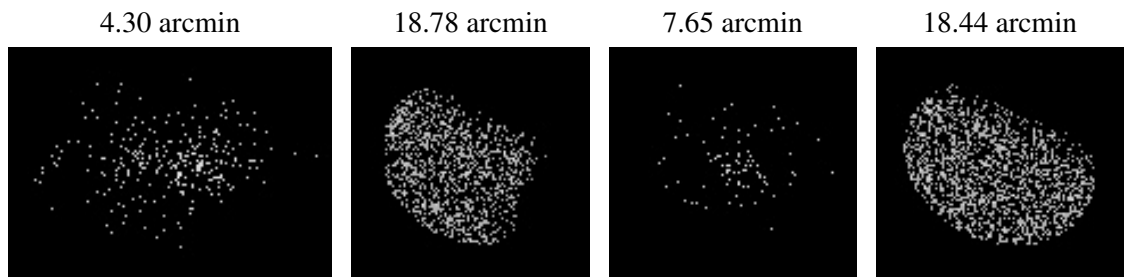


### 2.5.3 Slot 2





### 3 Point Sources



## A Summary

### A.1 Status

V&V Scientist	Jen Lauer
V&V Date (YYYY-MM-DD)	2006.09.18
V&V Edition	1
V&V Disposition and Status	OK
V&V Charge Time	13.916

### A.2 Comments