

# V&V Reference Report

## L2 ASCDS Version : 8.4.5

Observation 2827 - L2 Version 3  
Chandra X-Ray Center

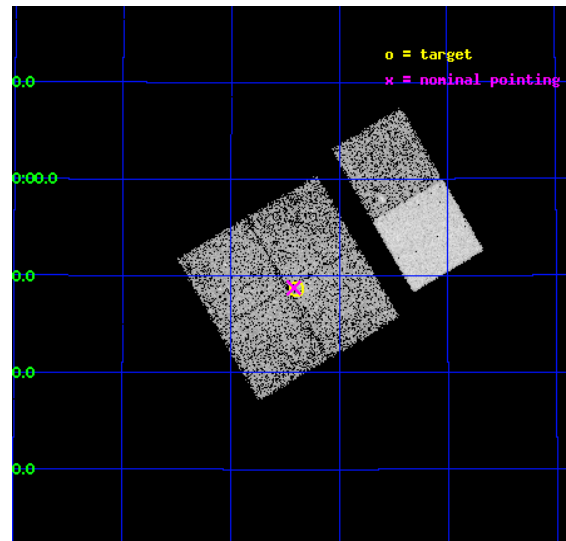
L2 Processing Date : Oct 4 2012

## Contents

<b>1</b>	<b>Front</b>	<b>2</b>
<b>2</b>	<b>OBI</b>	<b>3</b>
2.1	OBI . . . . .	3
2.1.1	Images . . . . .	3
2.1.2	Bias . . . . .	3
2.1.3	Parameters . . . . .	4
2.1.4	Events . . . . .	4
2.2	Compared Parameters . . . . .	5
2.3	Aspect . . . . .	6
2.4	Star Slots . . . . .	9
2.4.1	Slot 3 . . . . .	9
2.4.2	Slot 4 . . . . .	10
2.4.3	Slot 5 . . . . .	11
2.4.4	Slot 6 . . . . .	12
2.4.5	Slot 7 . . . . .	13
2.5	FID Slots . . . . .	14
2.5.1	Slot 0 . . . . .	14
2.5.2	Slot 1 . . . . .	15
2.5.3	Slot 2 . . . . .	16
<b>A</b>	<b>Summary</b>	<b>17</b>
A.1	Status . . . . .	17
A.2	Comments . . . . .	17

# 1 Front

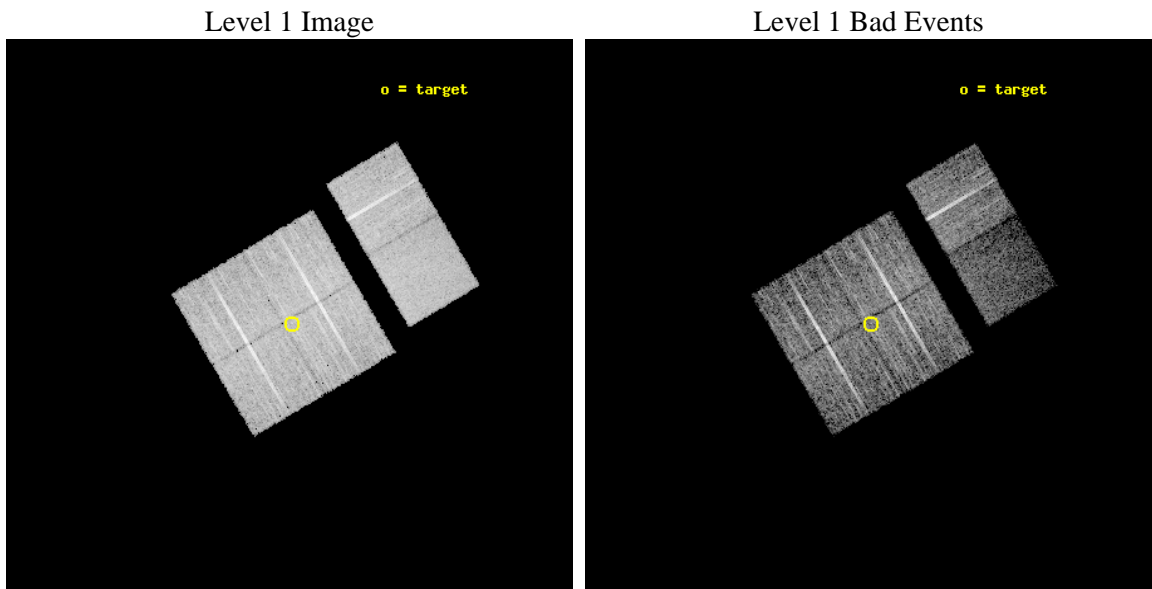
seq_num	500277	Sequence number
obs_id	2827	Observation id
title	FINE FLUOROSCOPY ON MOLECULAR CLUMPS OVERTAKEN BY SUPERNOVA BLAST WAVE	Proposal title
observer	Dr Yasunobu Uchiyama	Principal investigator
object	G78.2+2.1 CLUMP-1	Source name
dtcycle	0	&#160
cycle	P	events from which exps? Prim/Second/Both
ra_targ	305.35	Observer's specified target RA [deg]
dec_targ	40.81	Observer's specified target Dec [deg]
ra_nom	305.35495217906	Nominal RA [deg]
dec_nom	40.812742640047	Nominal Dec [deg]
roll_nom	59.589538213447	Nominal Roll [deg]
revision	3	Processing version of data
ontime	9564.1414453238	Sum of GTIs [s]
livetime	9443.0345275085	Livetime [s]
ontime0	9564.0183253288	Sum of GTIs [s]
ontime1	9564.0593653321	Sum of GTIs [s]
ontime2	9564.1004053354	Sum of GTIs [s]
ontime3	9564.1414453238	Sum of GTIs [s]
ontime6	9560.9825949818	Sum of GTIs [s]
ontime7	9564.1824853271	Sum of GTIs [s]
l2events	58391	Number of level 2 events



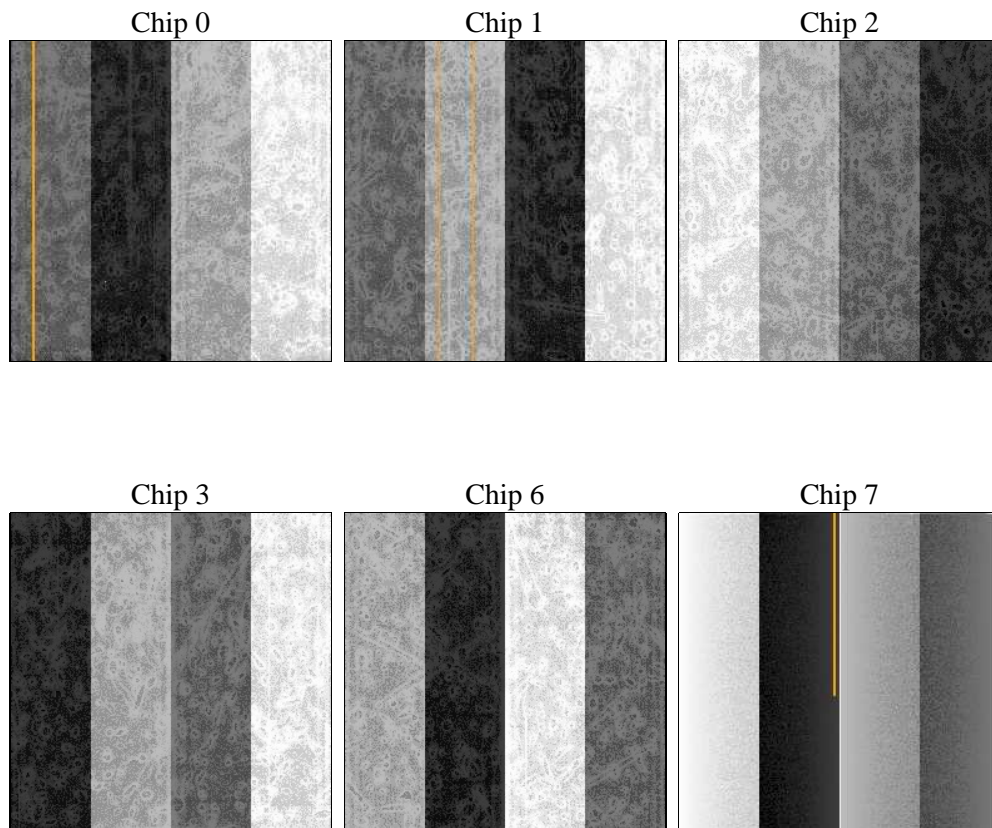
## 2 OBI

### 2.1 OBI

#### 2.1.1 Images



#### 2.1.2 Bias



### 2.1.3 Parameters

obi_num	3	Obi number	sched_exp_time	9600.000000	[s] Scheduled observation exposure time
ascdsver	8.4.5	Processing system revision	ontime	9564.1414453238	Sum of GTIs [s]
caldsver	4.5.2	&#160	ontime0	9564.0183253288	Sum of GTIs [s]
date	2012-10-04T11:27:36	Date and time of file creation	ontime1	9564.0593653321	Sum of GTIs [s]
revision	3	Processing version of data	ontime2	9564.1004053354	Sum of GTIs [s]
			ontime3	9564.1414453238	Sum of GTIs [s]
			ontime6	9560.9825949818	Sum of GTIs [s]
			ontime7	9564.1824853271	Sum of GTIs [s]
			l1events	313069	Number of level 1 events

### 2.1.4 Events

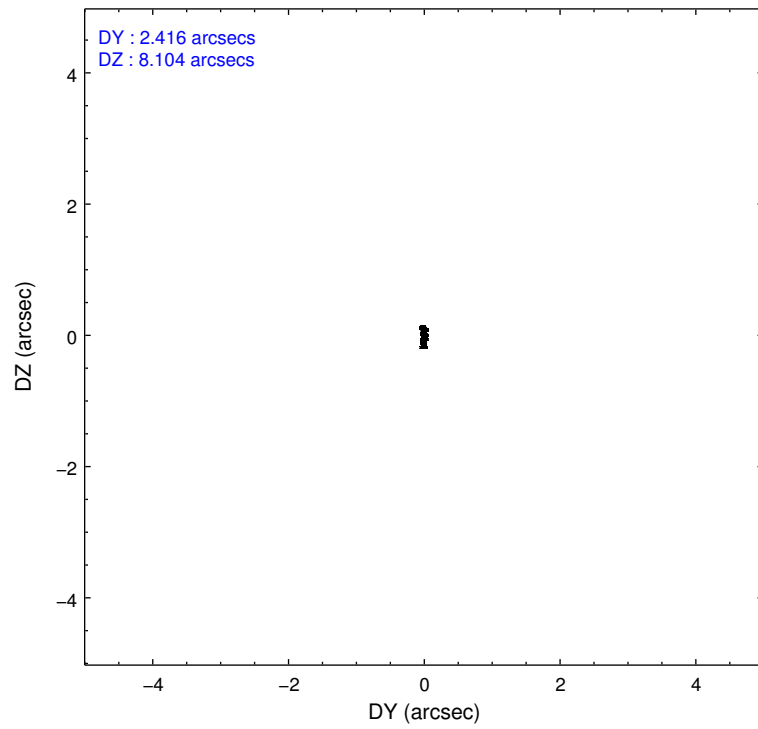
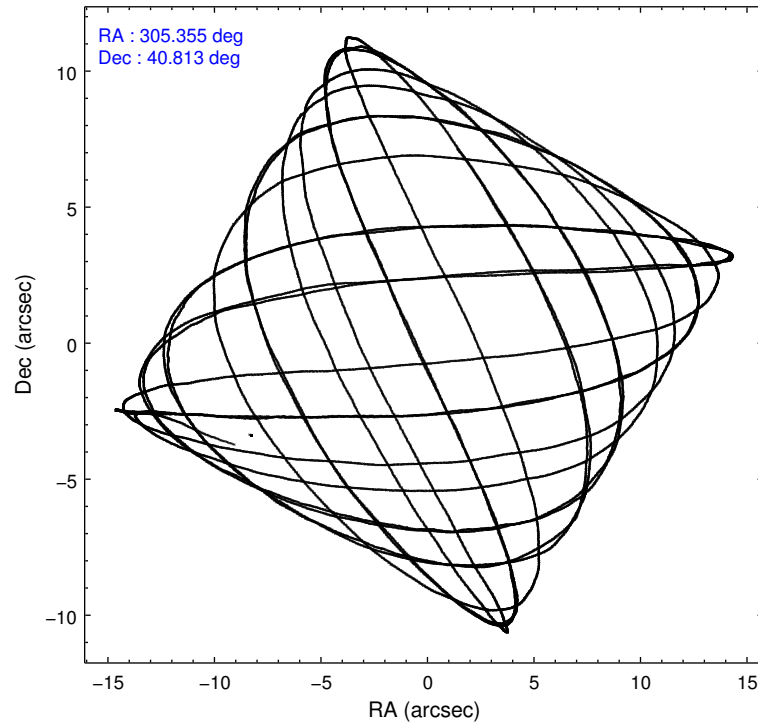
	ccd 0	ccd 1	ccd 2	ccd 3	ccd 6	ccd 7		ccd 0	ccd 1	ccd 2	ccd 3	ccd 6	ccd 7
level 1 events	50266	48439	57566	52906	54057	49835	grade 0 events	4509	3929	4046	4209	3524	3903
rejected events	42200	41017	50286	45460	47111	22595		8%	8%	7%	7%	6%	7%
rejected %	83%	84%	87%	85%	87%	45%	grade 1 events	34	30	22	31	26	49
								0%	0%	0%	0%	0%	0%
							grade 2 events	1400	1200	1268	1206	1196	5867
								2%	2%	2%	2%	2%	11%
							grade 3 events	671	621	516	578	636	2789
								1%	1%	0%	1%	1%	5%
							grade 4 events	566	693	570	574	623	2821
								1%	1%	0%	1%	1%	5%
							grade 5 events	1336	1530	1197	1473	1695	4988
								2%	3%	2%	2%	3%	10%
							grade 6 events	924	980	883	883	971	11872
								1%	2%	1%	1%	1%	23%
							grade 7 events	40826	39456	49064	43952	45386	17546
								81%	81%	85%	83%	83%	35%

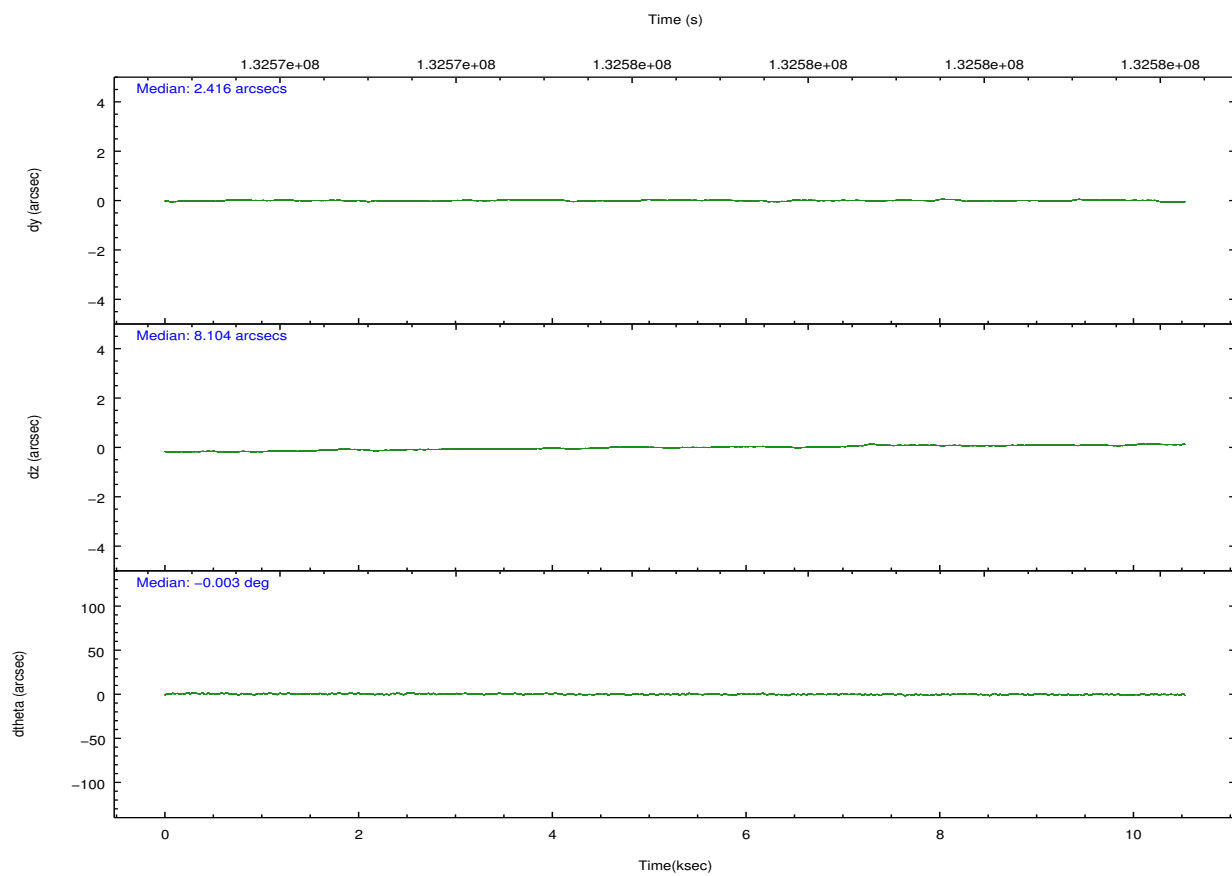
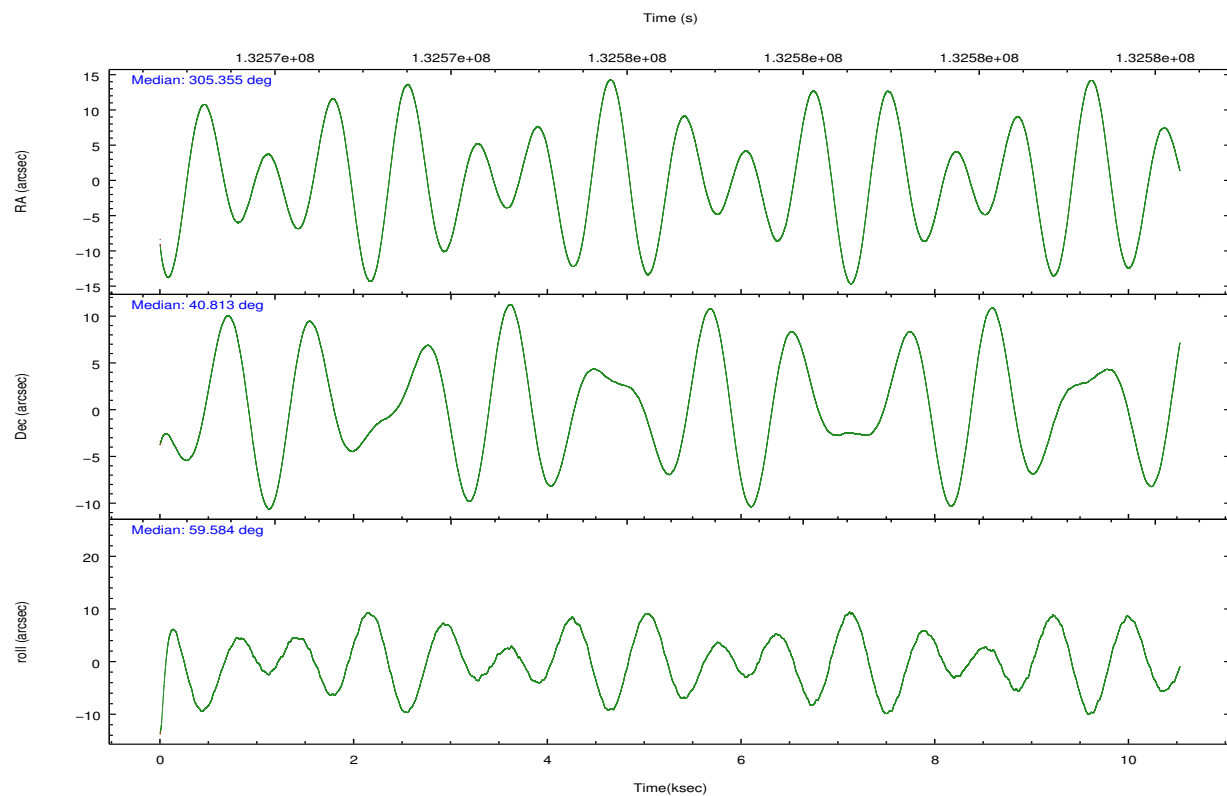


## 2.2 Compared Parameters

Parameter	Planned	Actual	Parameter	Planned	Actual
Instrument	ACIS	ACIS	Obspar format version number	7	7
Detector	ACIS-012367	ACIS-012367	Obspar file type	PREDICTED	ACTUAL
Grating	NONE	NONE	Obspar update status	NONE	UPDATED
Data mode	VFAINT	VFAINT	Number of optional ACIS chips dropped	0	0
Observation mode	POINTING	POINTING	On-chip summing requested	N	N
[deg] Pointing RA	305.354801	305.354952179064	Subarray requested	NONE	NONE
[deg] Pointing Dec	40.785375	40.81274264004725	Alternating exposures requested	N	N
[deg] Pointing Roll	59.380964	59.58953821344736	[s] Primary exposure time	0.000000	3.2
[mm] SIM focus pos	-0.782348	-0.7809083437167272			
[mm] SIM defocus	0	0.001439871863259334			
[mm] SIM translation stage pos	-233.592463	-233.5874344608287			
[mm] SIM translation stage offset	0	-0.005018542100998502			
[s] Observation start time (MET)	132572155.184000	132570824.90507			
Observation start date	2002-03-15T09:34:51	2002-03-15T09:13:44			
[s] Observation end time (MET)	132581755.184000	132582301.31803			
Observation end date	2002-03-15T12:14:51	2002-03-15T12:25:01			
Read mode	TIMED	TIMED			

## 2.3 Aspect



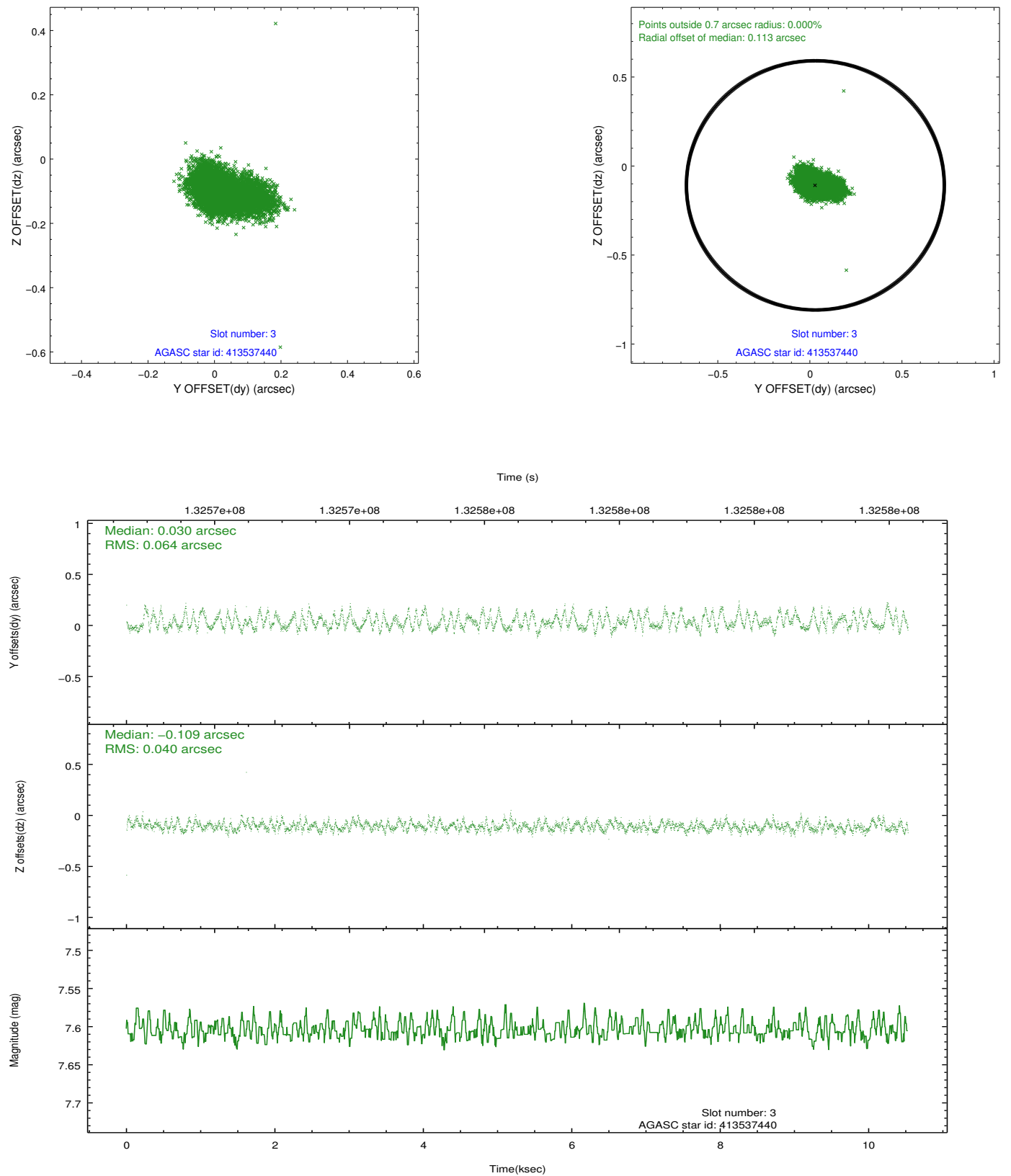


### Slot Statistics

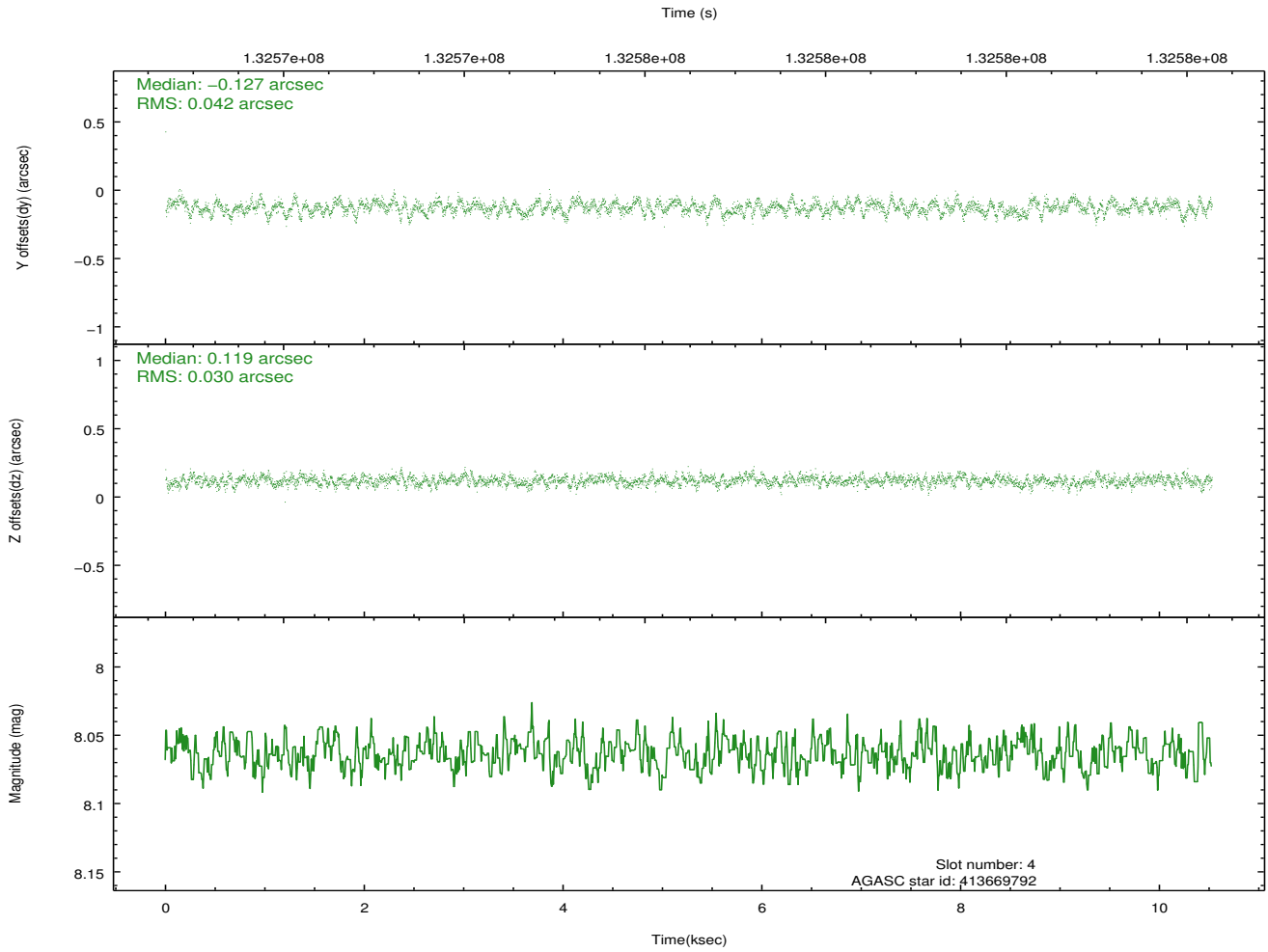
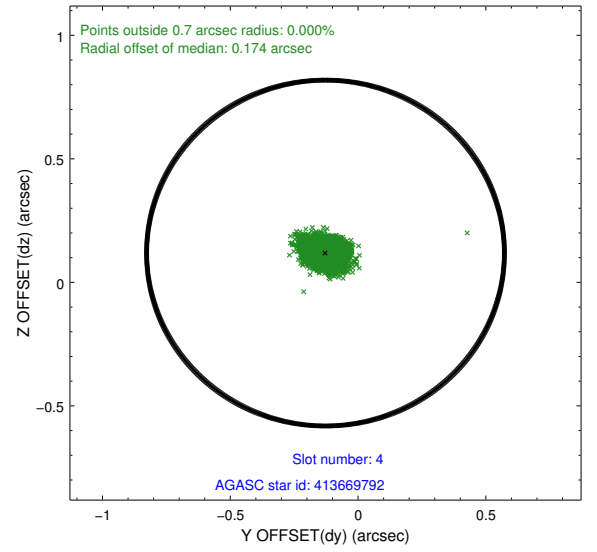
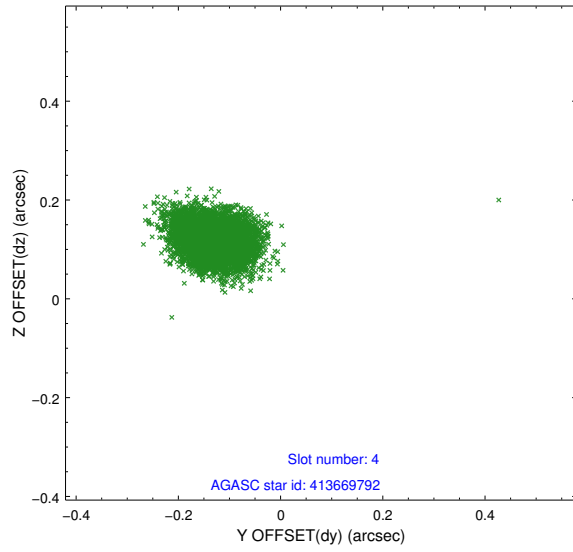
slot	status	id	mag	n_pts	med_dy	med_dz	dr1	dr2	ra	dec	mean_y	mean_z
0	FID	ACIS-I-3	7.44	2569	-0.033	0.215	0.009	0.017	0.000000	0.000000	54.79	-964.53
1	FID	ACIS-I-5	7.24	2568	-0.037	-0.010	0.008	0.013	0.000000	0.000000	-1810.83	1065.64
2	FID	ACIS-I-6	7.26	2569	-0.022	-0.136	0.007	0.011	0.000000	0.000000	402.35	1710.66
3	GUIDE	413537440	7.61	5137	0.030	-0.109	0.080	0.130	304.302199	40.591389	-2052.37	2129.54
4	GUIDE	413669792	8.06	5135	-0.127	0.119	0.054	0.088	306.075459	41.023146	1739.63	-1243.23
5	GUIDE	413543888	8.20	5136	0.088	-0.032	0.057	0.091	304.596711	40.387769	-2282.97	1064.31
6	GUIDE	414057760	8.57	5135	0.051	-0.068	0.061	0.098	304.976464	41.602389	2013.35	2376.52
7	GUIDE	413670992	8.84	5135	-0.045	0.090	0.090	0.138	306.315225	40.998645	2002.26	-1846.16

## 2.4 Star Slots

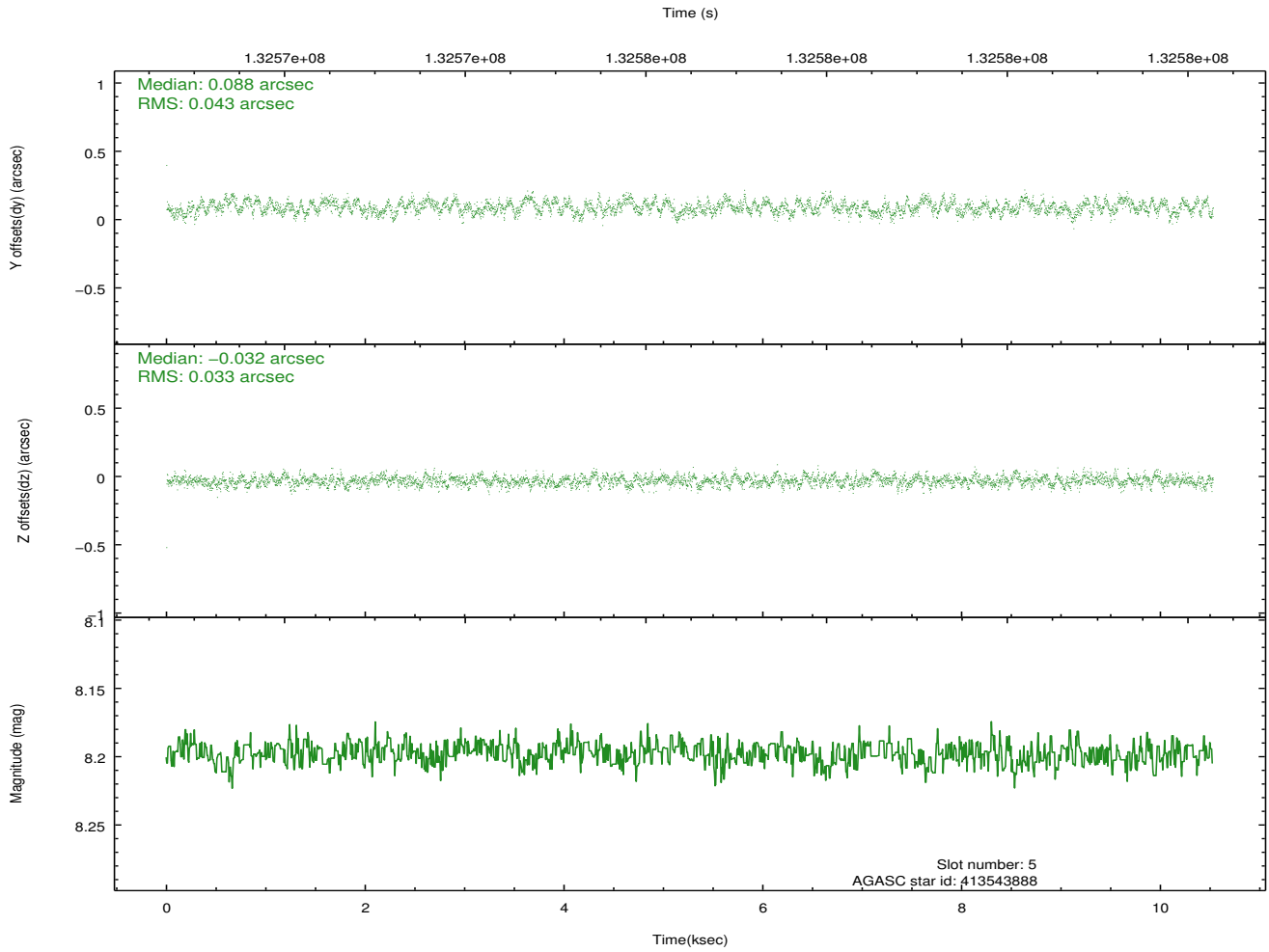
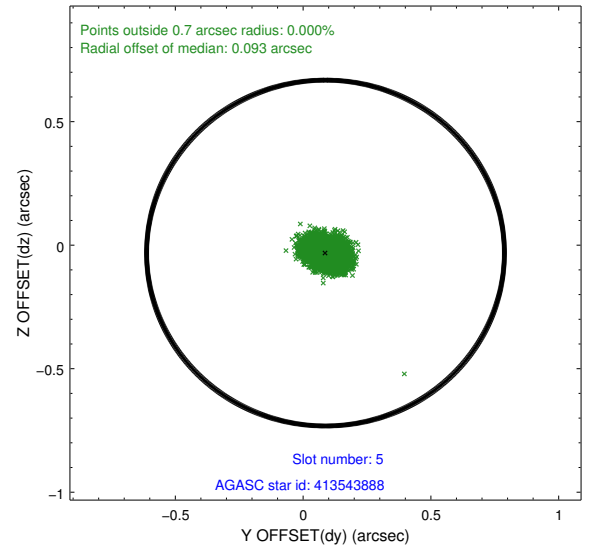
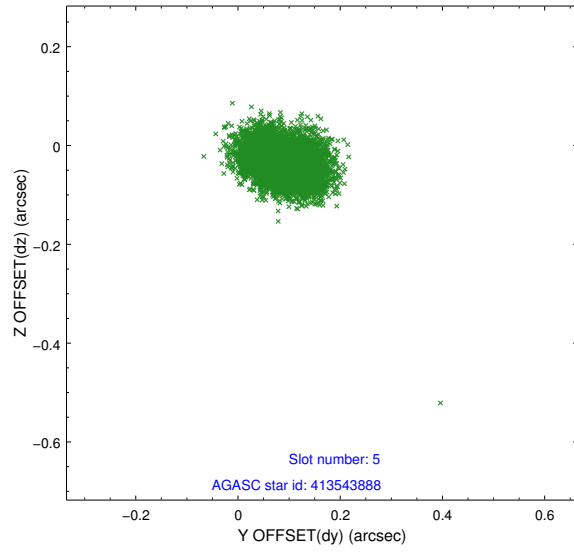
### 2.4.1 Slot 3



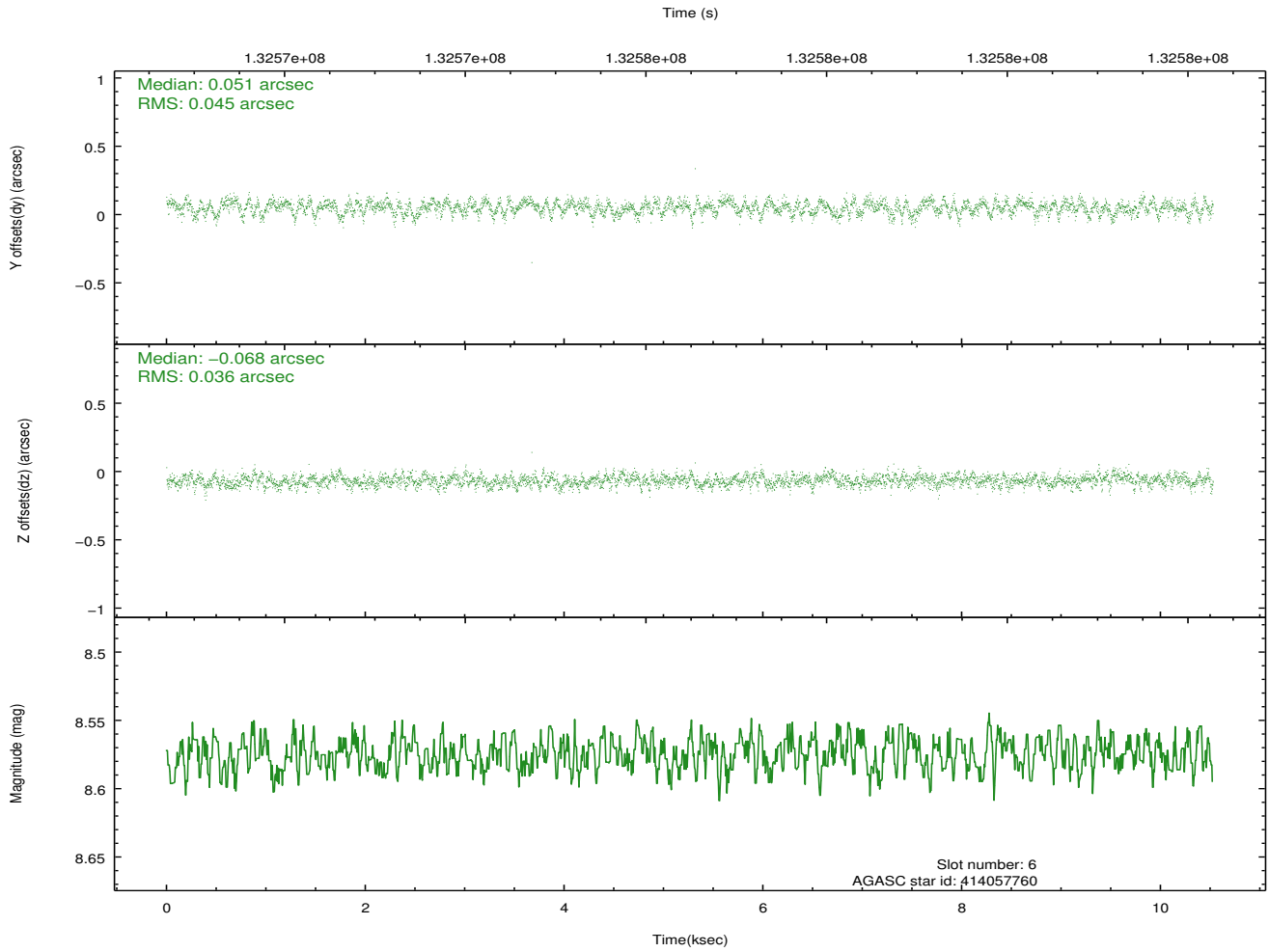
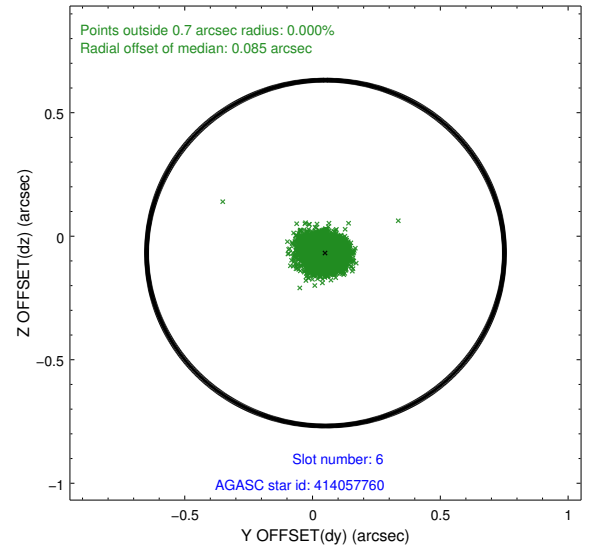
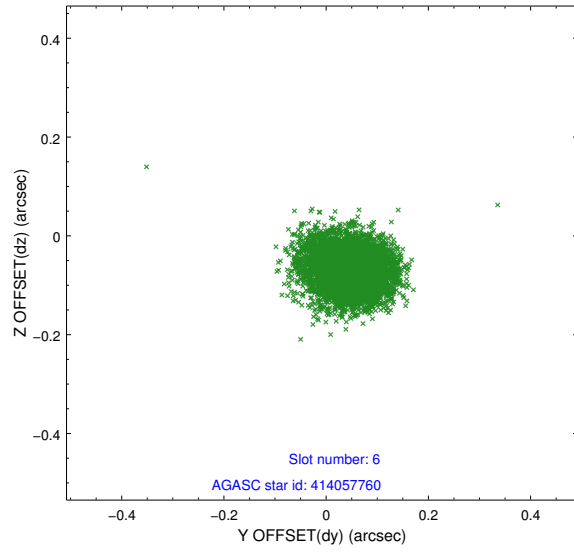
## 2.4.2 Slot 4



### 2.4.3 Slot 5

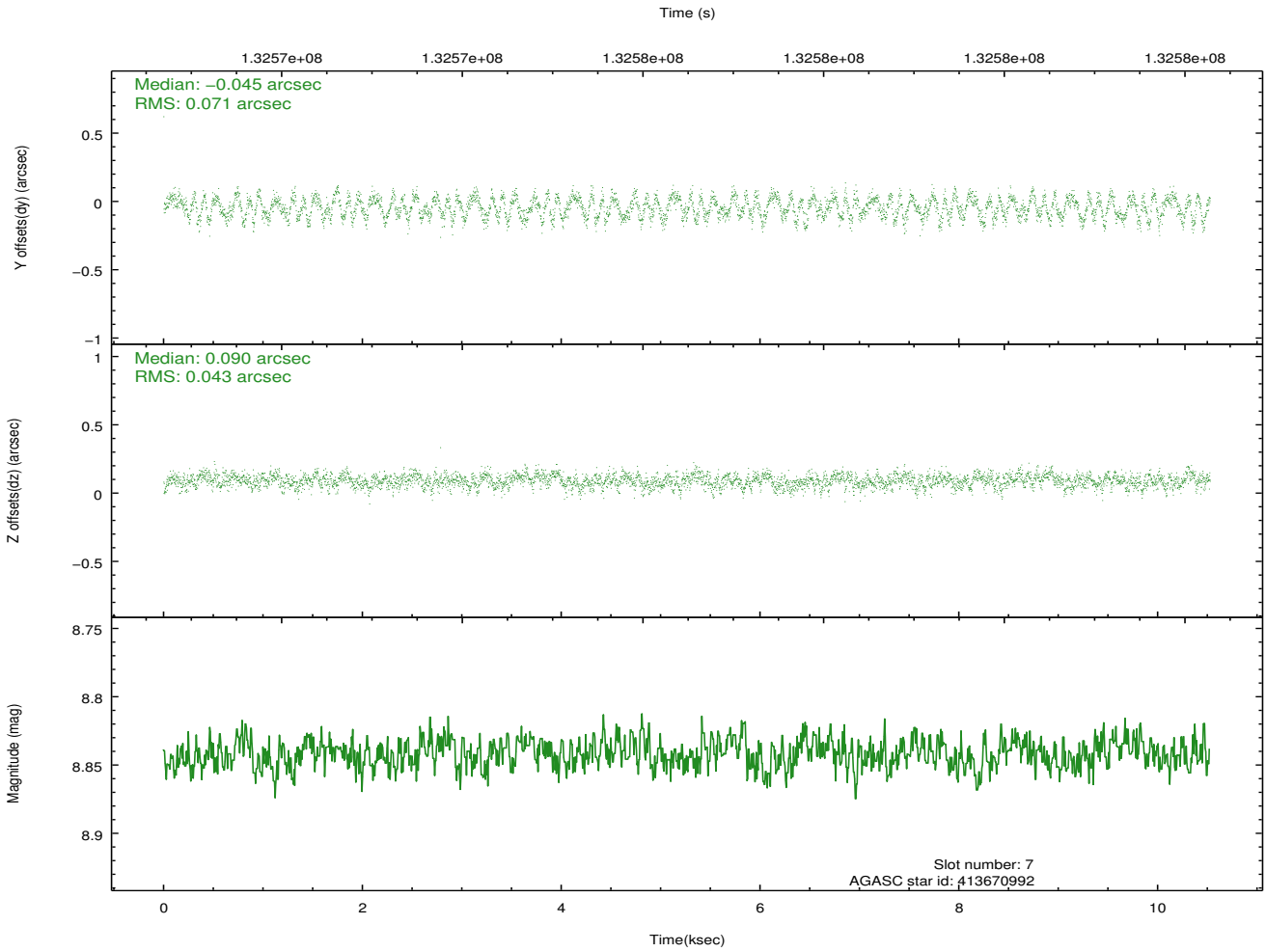
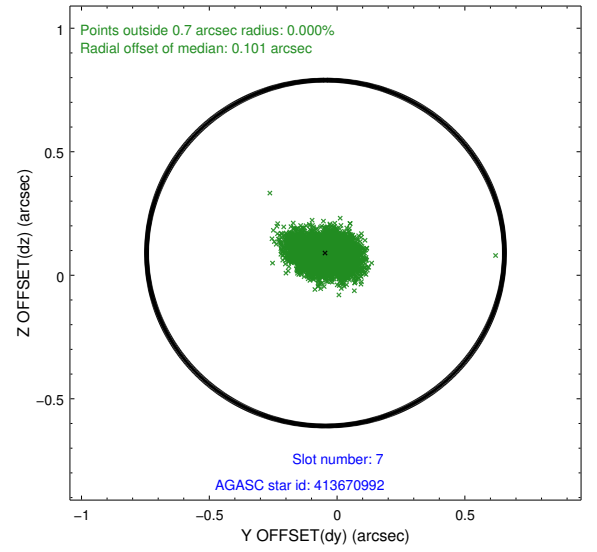
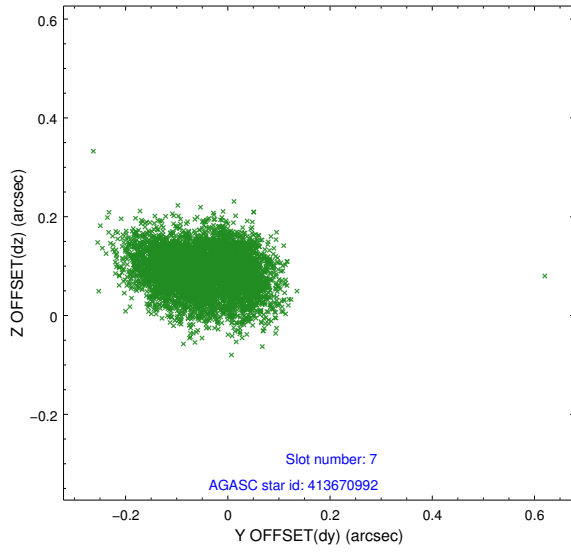


## 2.4.4 Slot 6



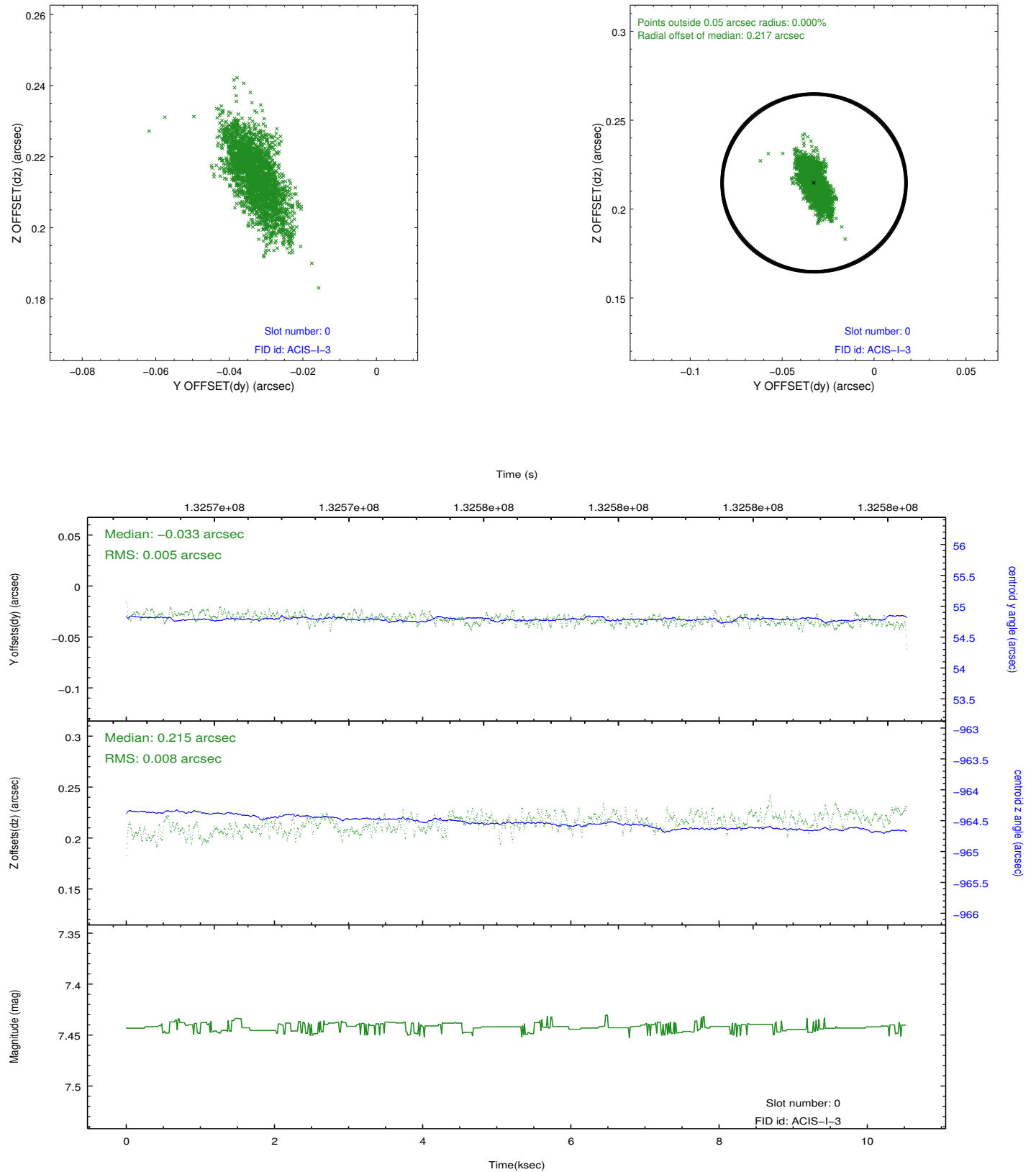


## 2.4.5 Slot 7

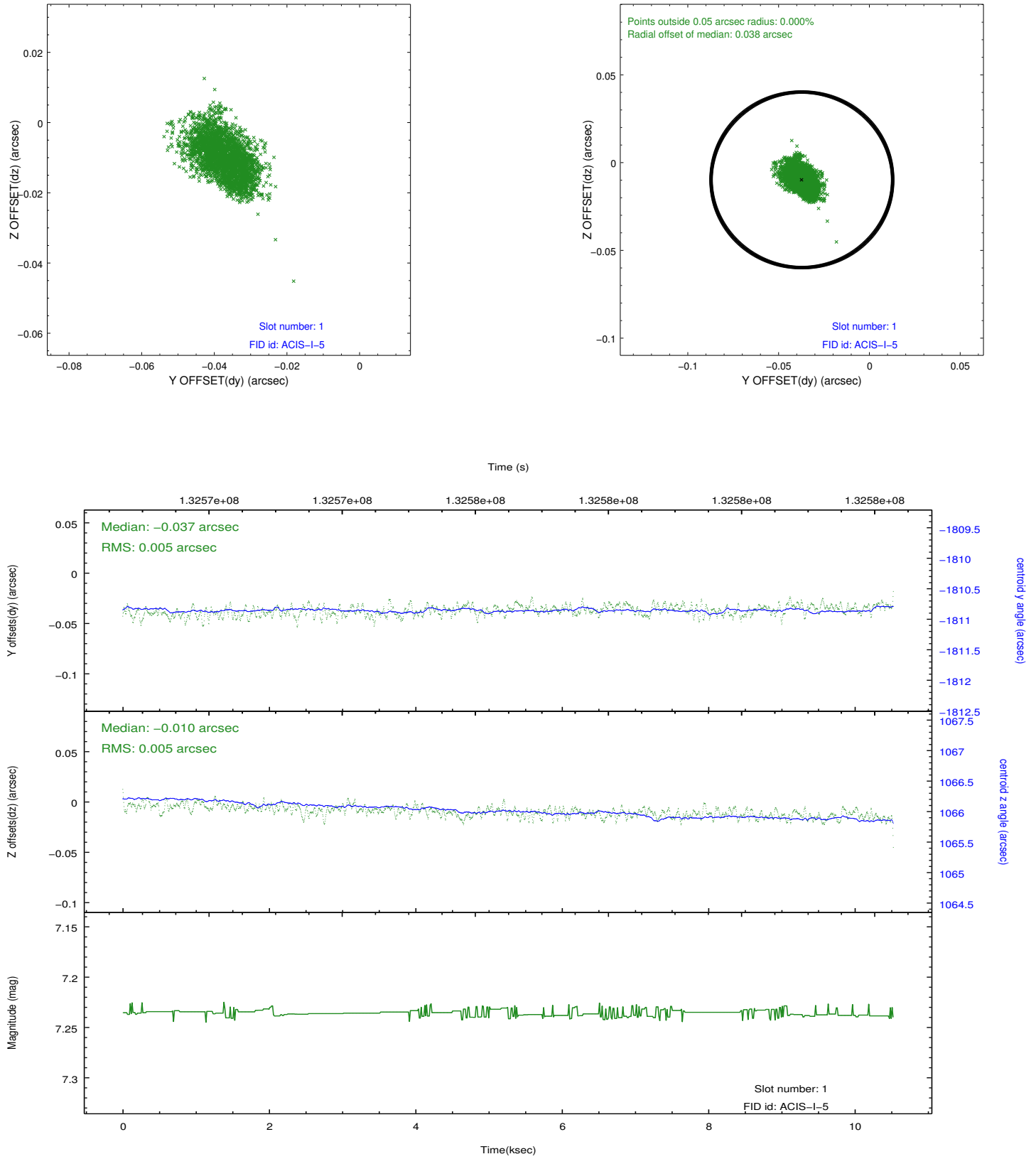


## 2.5 FID Slots

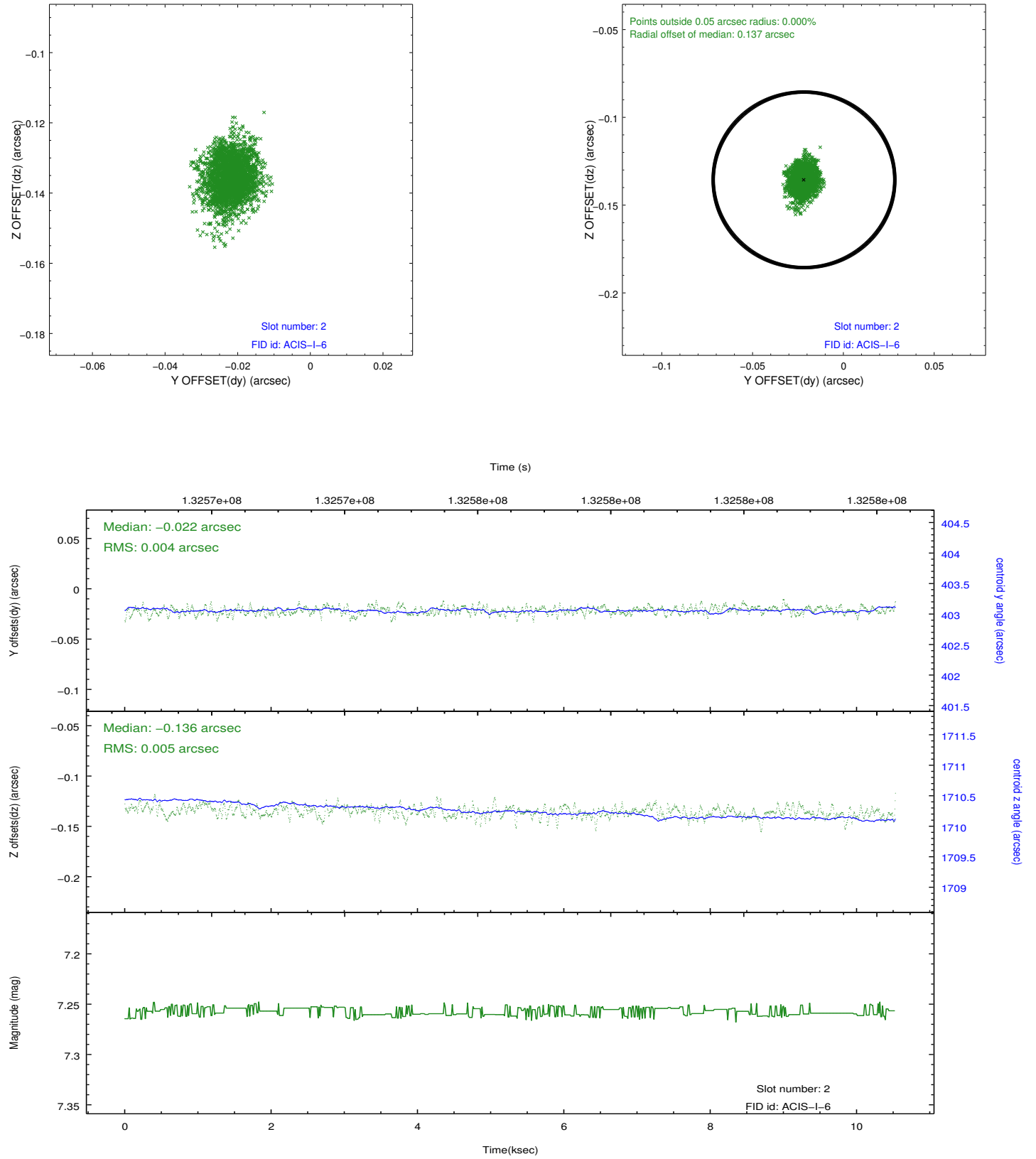
### 2.5.1 Slot 0



## 2.5.2 Slot 1



### 2.5.3 Slot 2



## A Summary

### A.1 Status

V&V Scientist	Beth Sundheim
V&V Date (YYYY-MM-DD)	2012.10.05
V&V Edition	1
V&V Disposition and Status	OK
V&V Charge Time	9.564

### A.2 Comments