

V&V Reference Report

L2 ASCDS Version : 8.4.5

Observation 2816 - L2 Version 3
Chandra X-Ray Center

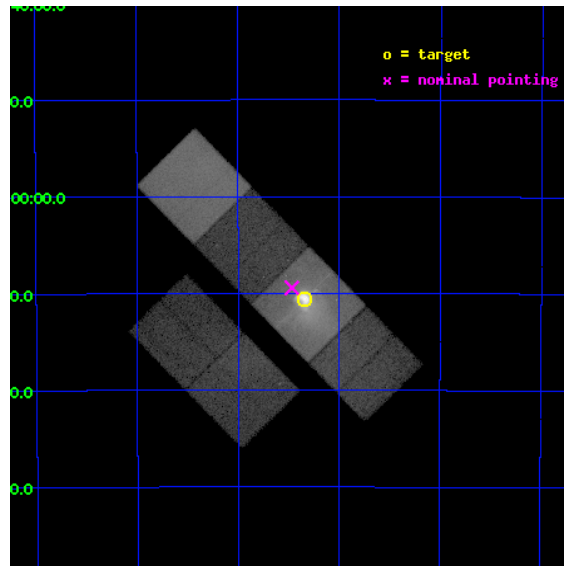
L2 Processing Date : Sep 28 2012

Contents

1	Front	2
2	OBI	3
2.1	OBI	3
2.1.1	Images	3
2.1.2	Bias	3
2.1.3	Parameters	4
2.1.4	Events	4
2.2	Compared Parameters	5
2.3	Aspect	6
2.4	Star Slots	9
2.4.1	Slot 3	9
2.4.2	Slot 4	10
2.4.3	Slot 5	11
2.4.4	Slot 6	12
2.4.5	Slot 7	13
2.5	FID Slots	14
2.5.1	Slot 0	14
2.5.2	Slot 1	15
2.5.3	Slot 2	16
A	Summary	17
A.1	Status	17
A.2	Comments	17

1 Front

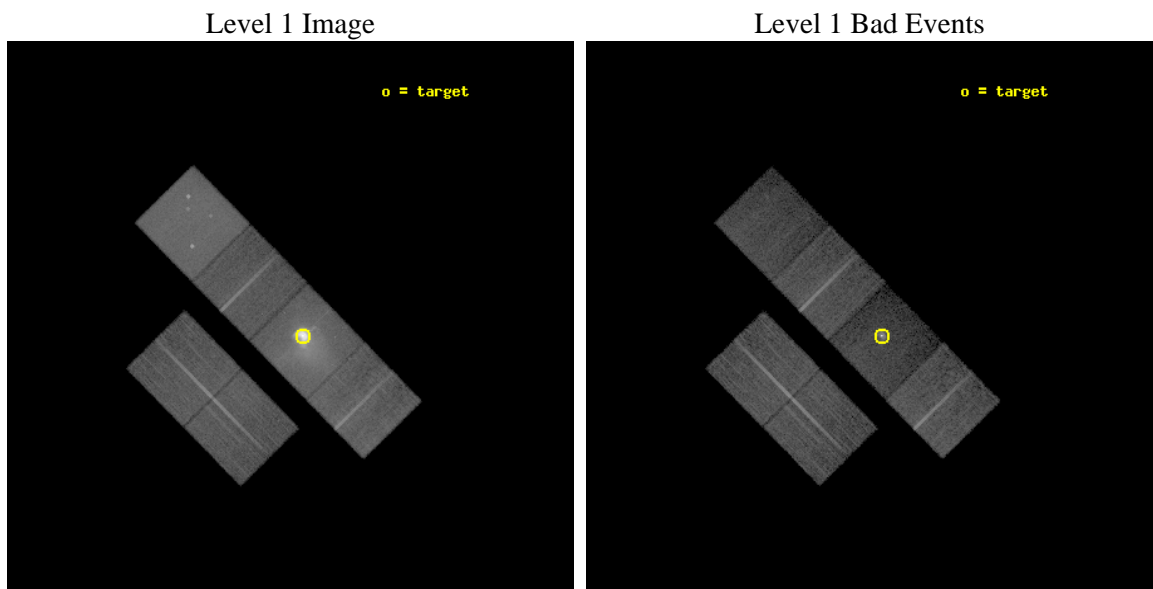
seq_num	500266	Sequence number
obs_id	2816	Observation id
title	THE DYNAMICAL PULSAR-WIND NEBULA IN THE VELA SNR	Proposal title
observer	Dr. George Pavlov	Principal investigator
object	VELA PWN	Source name
dtcycle	0	
cycle	P	events from which exps? Prim/Second/Both
ra_targ	128.83625	Observer's specified target RA [deg]
dec_targ	-45.176667	Observer's specified target Dec [deg]
ra_nom	128.86689582068	Nominal RA [deg]
dec_nom	-45.157123196625	Nominal Dec [deg]
roll_nom	45.582262624129	Nominal Roll [deg]
revision	3	Processing version of data
ontime	19240.75794661	Sum of GTIs [s]
livetime	18997.119884097	Livetime [s]
ontime2	19244.039936945	Sum of GTIs [s]
ontime3	19237.393816501	Sum of GTIs [s]
ontime5	19243.957827017	Sum of GTIs [s]
ontime6	19240.675846681	Sum of GTIs [s]
ontime7	19240.75794661	Sum of GTIs [s]
ontime8	19237.352806434	Sum of GTIs [s]
l2events	597499	Number of level 2 events



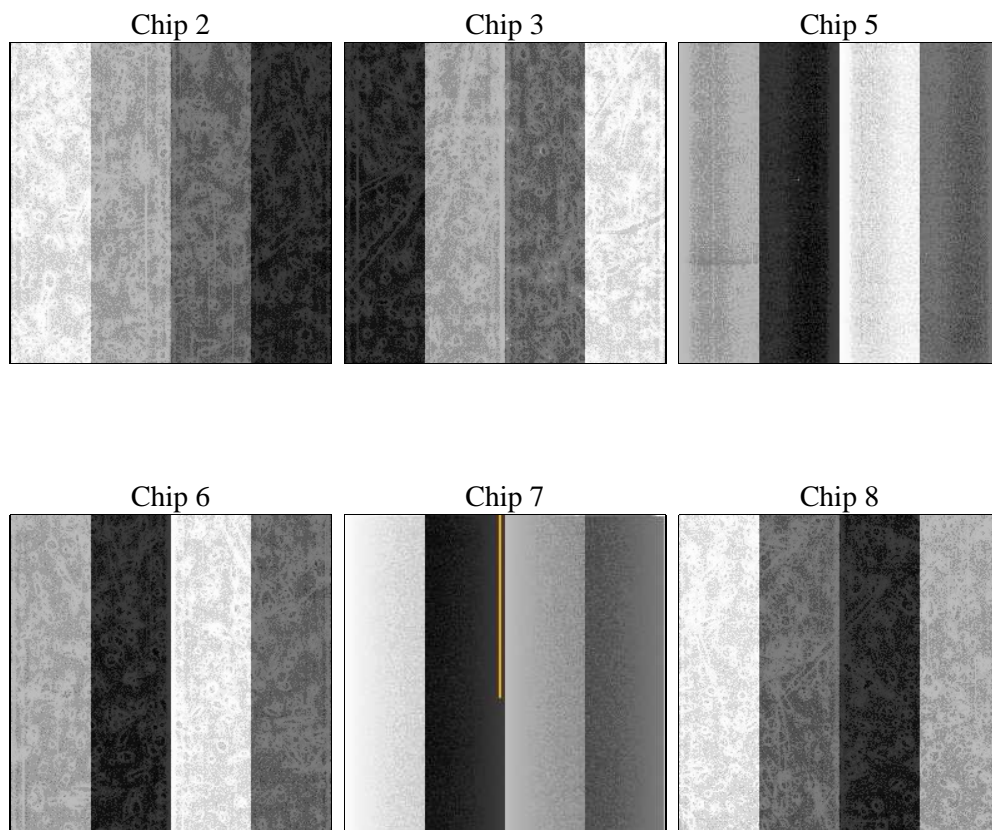
2 OBI

2.1 OBI

2.1.1 Images



2.1.2 Bias



2.1.3 Parameters

obi_num	0	Obi number	sched_exp_time	19188.551000	[s] Scheduled observation exposure time
ascdsver	8.4.5	Processing system revision	ontime	19240.75794661	Sum of GTIs [s]
caldsver	4.5.2	 	ontime2	19244.039936945	Sum of GTIs [s]
date	2012-09-29T00:19:55	Date and time of file creation	ontime3	19237.393816501	Sum of GTIs [s]
revision	3	Processing version of data	ontime5	19243.957827017	Sum of GTIs [s]
			ontime6	19240.675846681	Sum of GTIs [s]
			ontime7	19240.75794661	Sum of GTIs [s]
			ontime8	19237.352806434	Sum of GTIs [s]
			l1events	1127862	Number of level 1 events

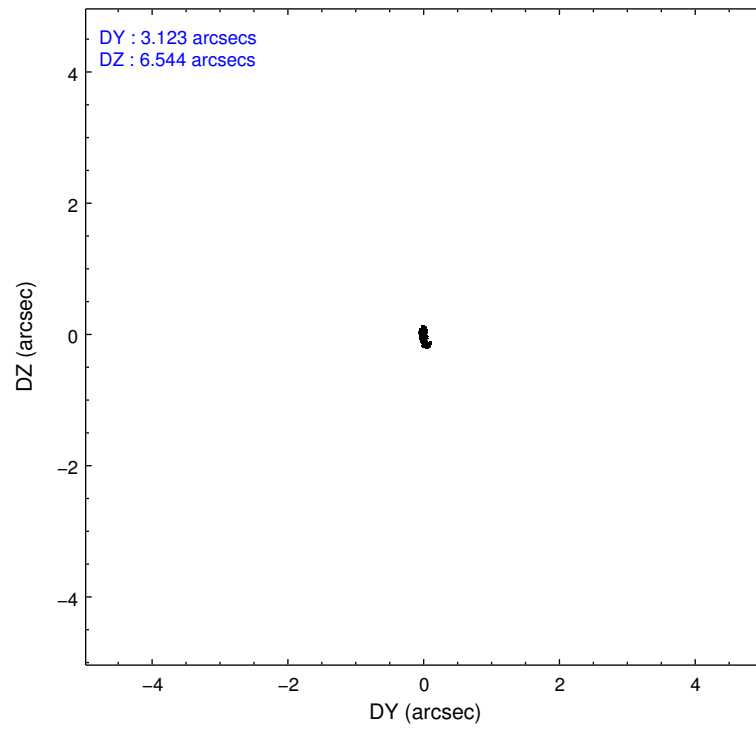
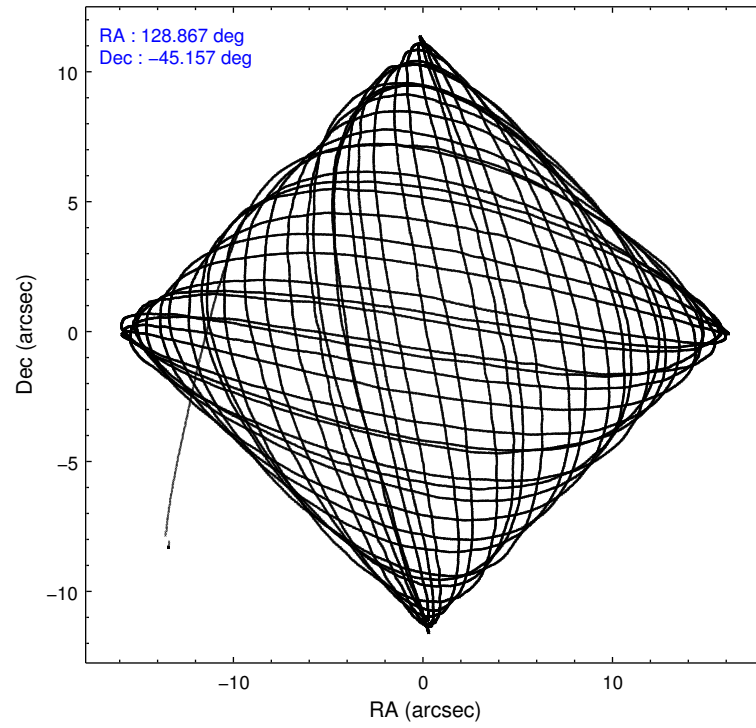
2.1.4 Events

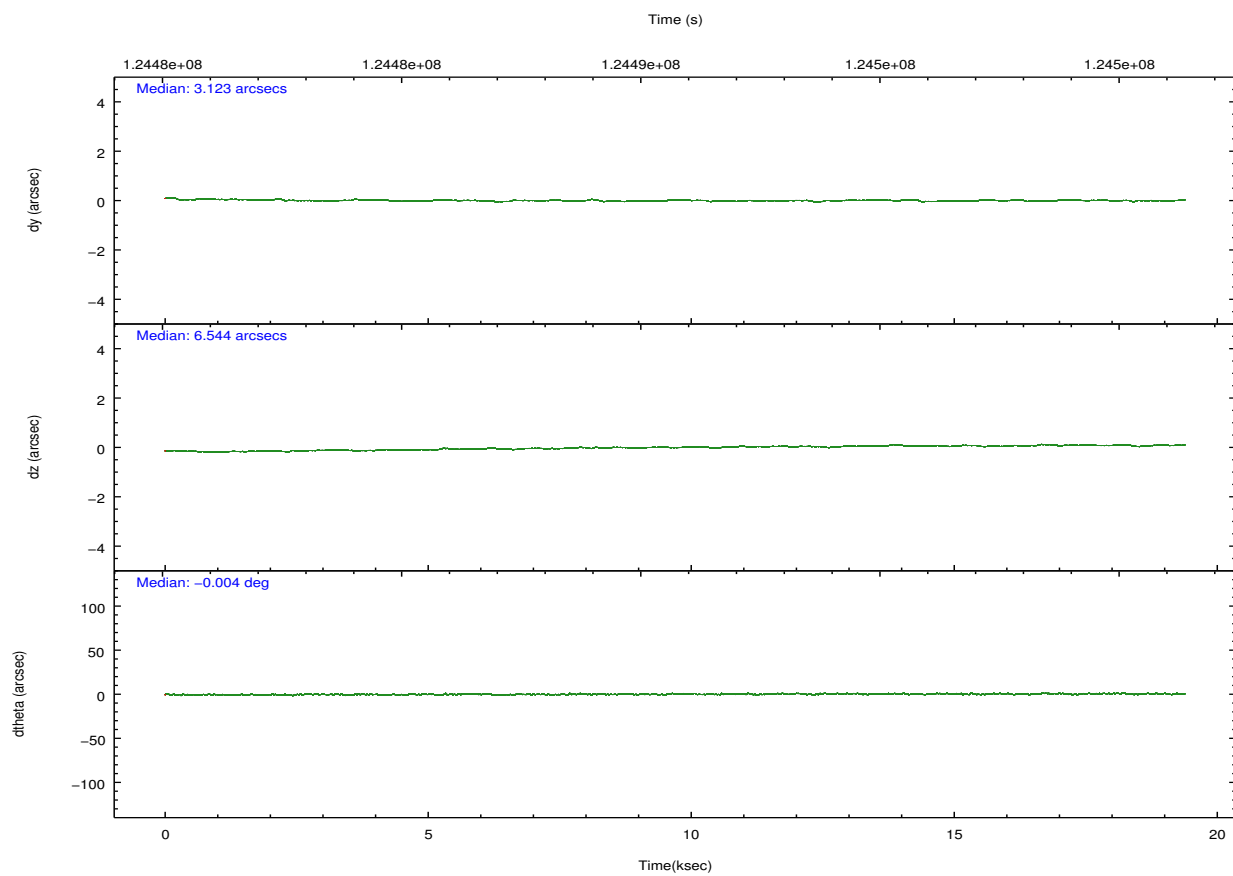
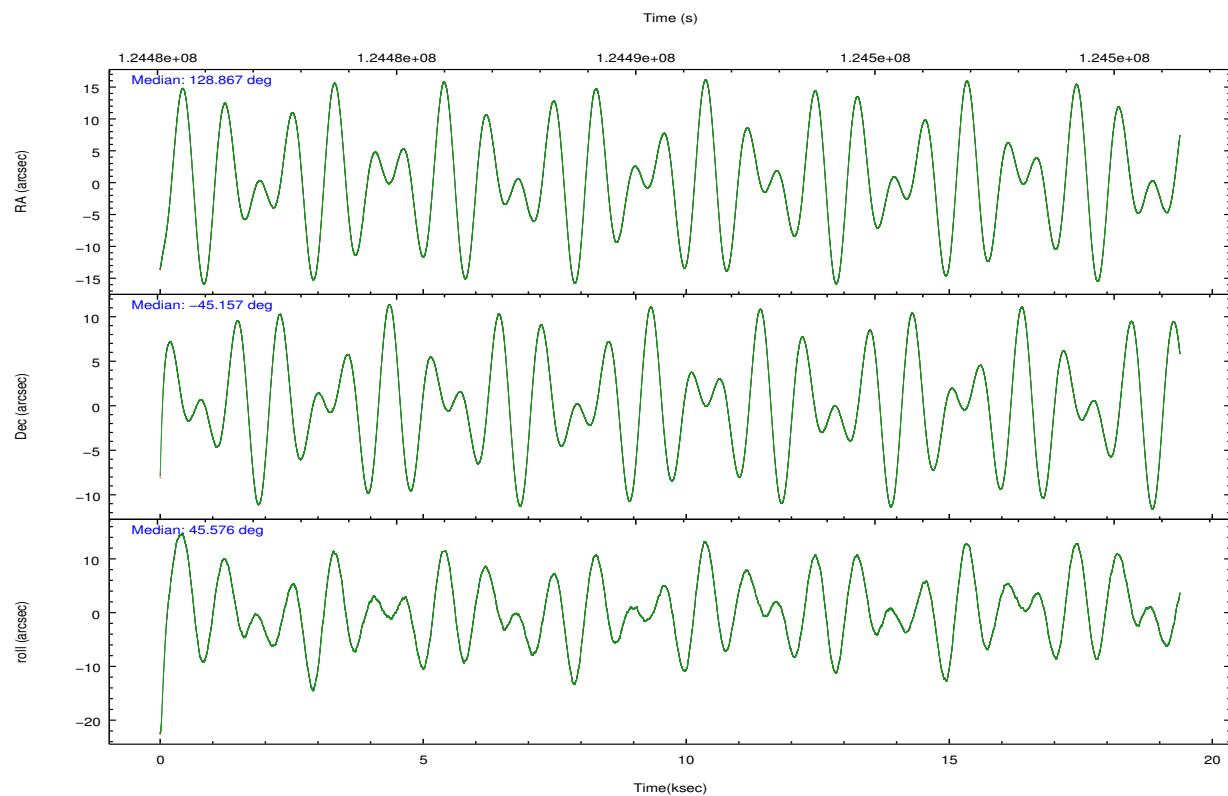
	ccd 2	ccd 3	ccd 5	ccd 6	ccd 7	ccd 8		ccd 2	ccd 3	ccd 5	ccd 6	ccd 7	ccd 8
level 1 events	124412	122258	197652	121264	407927	154349	grade 0 events	17055	22192	57882	22402	111715	33004
rejected events	99326	91443	55710	89944	56159	96432		13%	18%	29%	18%	27%	21%
rejected %	79%	74%	28%	74%	13%	62%	grade 1 events	93	107	221	108	762	158
								0%	0%	0%	0%	0%	0%
							grade 2 events	3487	3595	33390	3631	87877	8620
								2%	2%	16%	2%	21%	5%
							grade 3 events	1290	1508	8521	1535	38714	4142
								1%	1%	4%	1%	9%	2%
							grade 4 events	1353	1504	8173	1521	38445	3879
								1%	1%	4%	1%	9%	2%
							grade 5 events	2648	2994	10506	3334	12825	4832
								2%	2%	5%	2%	3%	3%
							grade 6 events	1910	2022	34001	2242	75087	8278
								1%	1%	17%	1%	18%	5%
							grade 7 events	96576	88336	44958	86491	42502	91436
								77%	72%	22%	71%	10%	59%

2.2 Compared Parameters

Parameter	Planned	Actual	Parameter	Planned	Actual
Instrument	ACIS	ACIS	Obspar format version number	7	7
Detector	ACIS-235678	ACIS-235678	Obspar file type	PREDICTED	ACTUAL
Grating	NONE	NONE	Obspar update status	NONE	UPDATED
Data mode	FAINT	FAINT	Number of optional ACIS chips dropped	0	0
Observation mode	POINTING	POINTING	On-chip summing requested	N	N
[deg] Pointing RA	128.857721	128.8668958206785	Subarray requested	NONE	NONE
[deg] Pointing Dec	-45.183636	-45.15712319662542	Alternating exposures requested	N	N
[deg] Pointing Roll	45.419139	45.58226262412948	[s] Primary exposure time	0.000000	3.2
[mm] SIM focus pos	-0.684267	-0.6828225247311905			
[mm] SIM defocus	0	0.001444936568705701			
[mm] SIM translation stage pos	-190.132523	-190.1425803651734			
[mm] SIM translation stage offset	0	0.01005778216563158			
[s] Observation start time (MET)	124481220.184000	124480211.55417			
Observation start date	2001-12-11T18:05:56	2001-12-11T17:50:11			
[s] Observation end time (MET)	124500408.184000	124500723.34249			
Observation end date	2001-12-11T23:25:44	2001-12-11T23:32:03			
Read mode	TIMED	TIMED			

2.3 Aspect



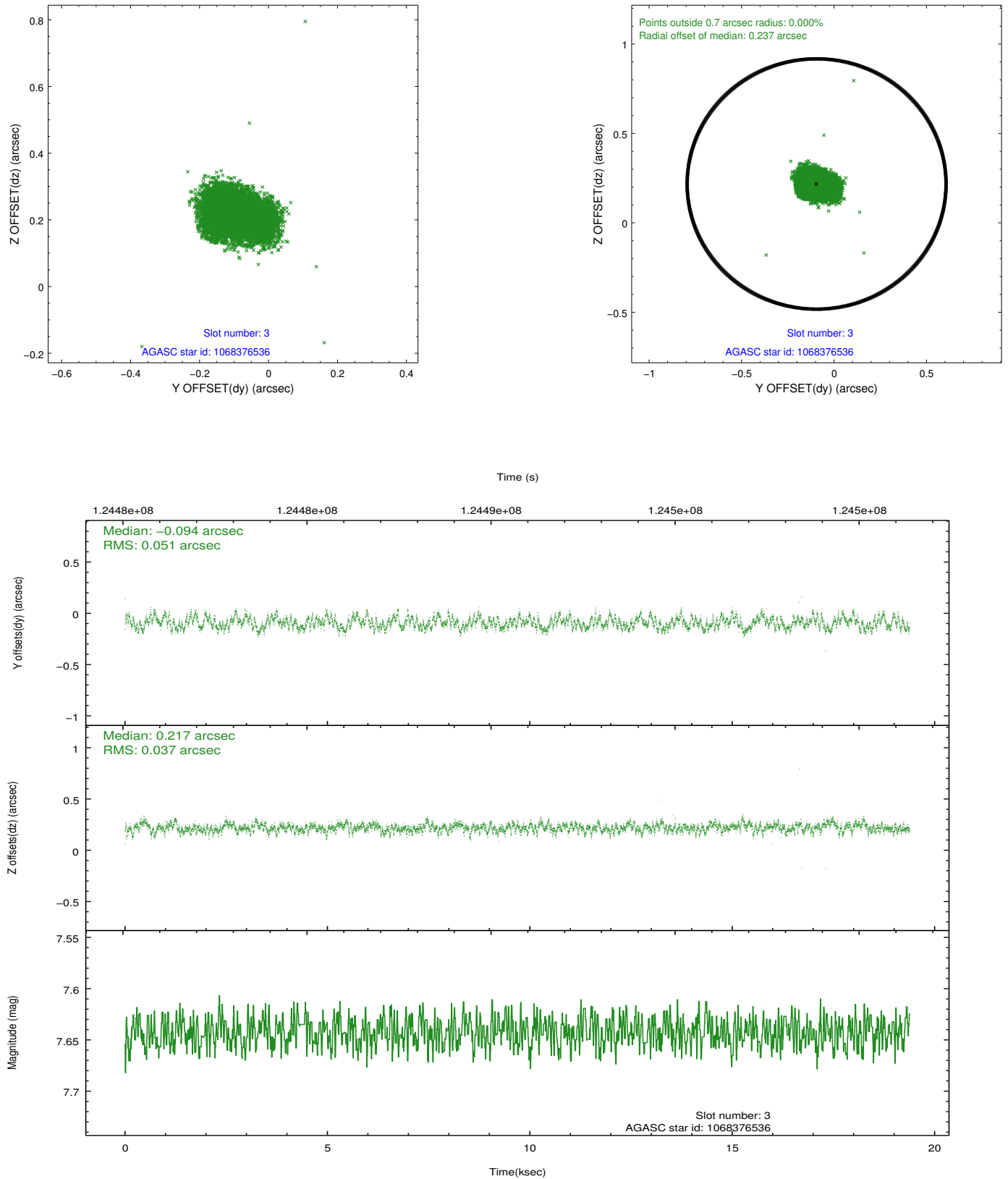


Slot Statistics

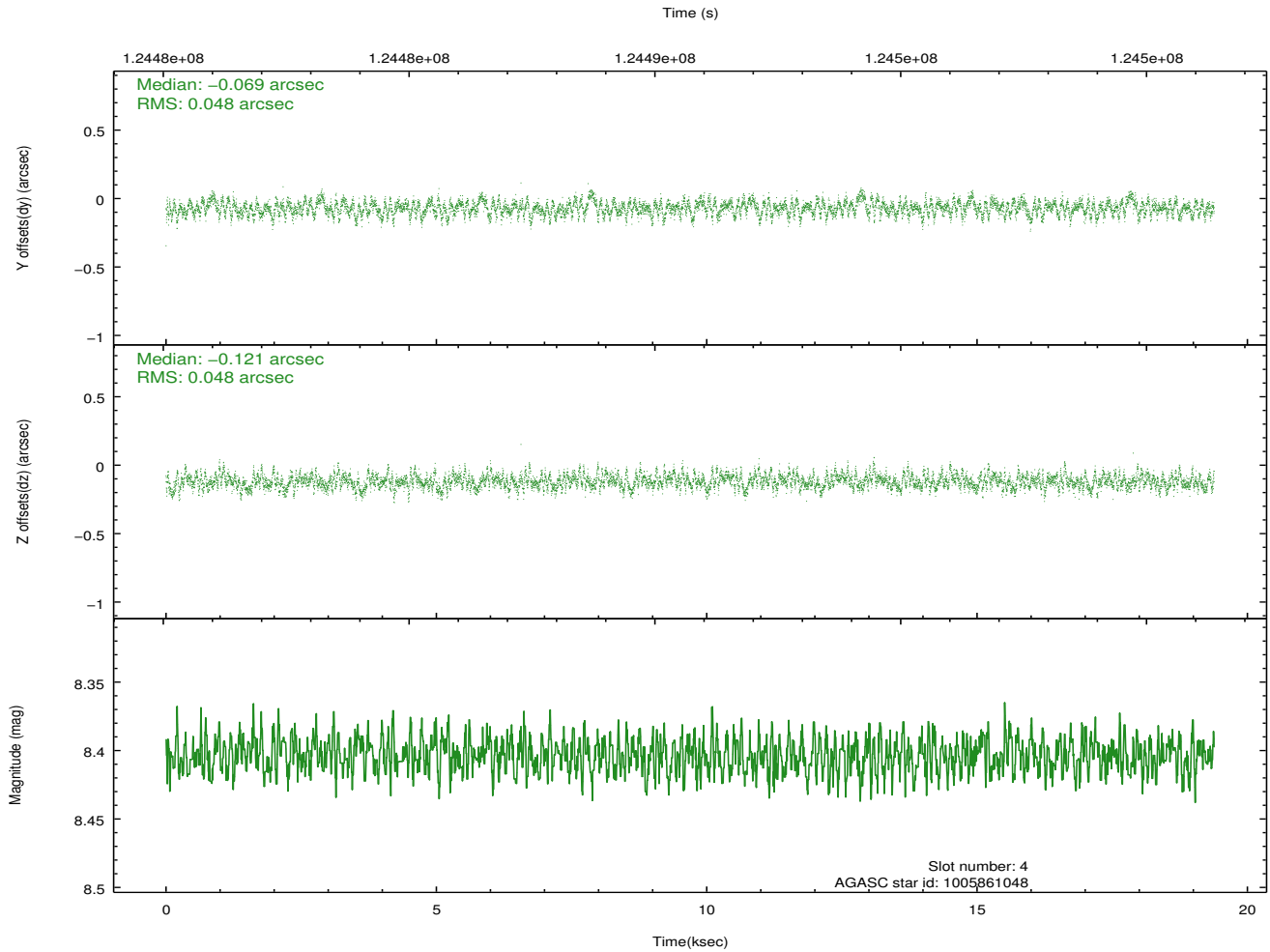
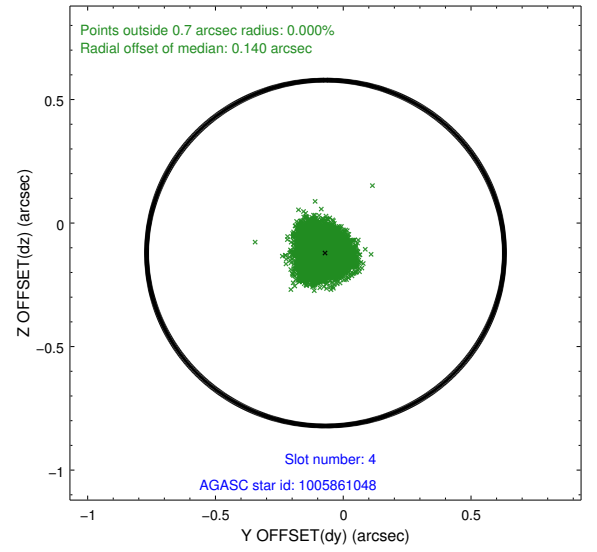
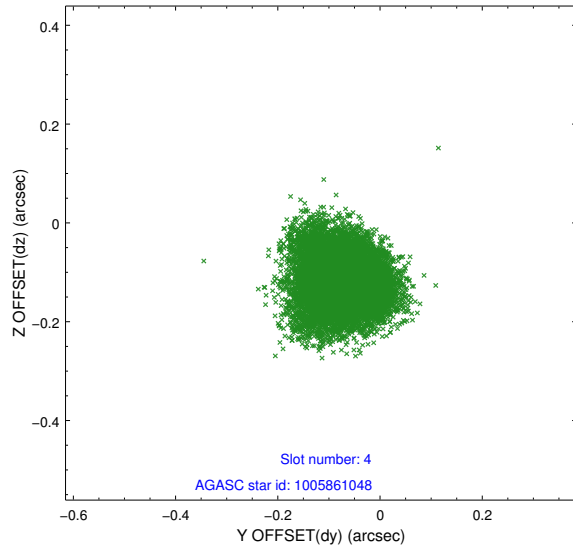
slot	status	id	mag	n_pts	med_dy	med_dz	dr1	dr2	ra	dec	mean_y	mean_z
0	FID	ACIS-S-3	7.36	4723	-0.099	-0.083	0.008	0.014	0.000000	0.000000	57.33	-1856.77
1	FID	ACIS-S-4	7.20	4717	0.021	0.091	0.007	0.011	0.000000	0.000000	2157.61	180.71
2	FID	ACIS-S-5	7.24	4721	0.050	0.002	0.007	0.012	0.000000	0.000000	-1808.31	174.55
3	GUIDE	1068376536	7.64	9442	-0.094	0.217	0.067	0.108	129.556408	-45.593502	178.95	-2293.91
4	GUIDE	1005861048	8.40	9446	-0.069	-0.121	0.073	0.118	128.669106	-44.528323	1339.63	2000.59
5	GUIDE	1005872888	8.40	9439	-0.103	-0.085	0.113	0.188	128.718363	-44.887099	510.33	1002.90
6	GUIDE	1068399176	9.09	9443	0.075	0.066	0.086	0.138	129.539137	-45.338406	808.37	-1623.63
7	GUIDE	1068263200	9.15	9441	0.188	-0.067	0.093	0.147	128.222628	-45.344390	-1544.69	733.96

2.4 Star Slots

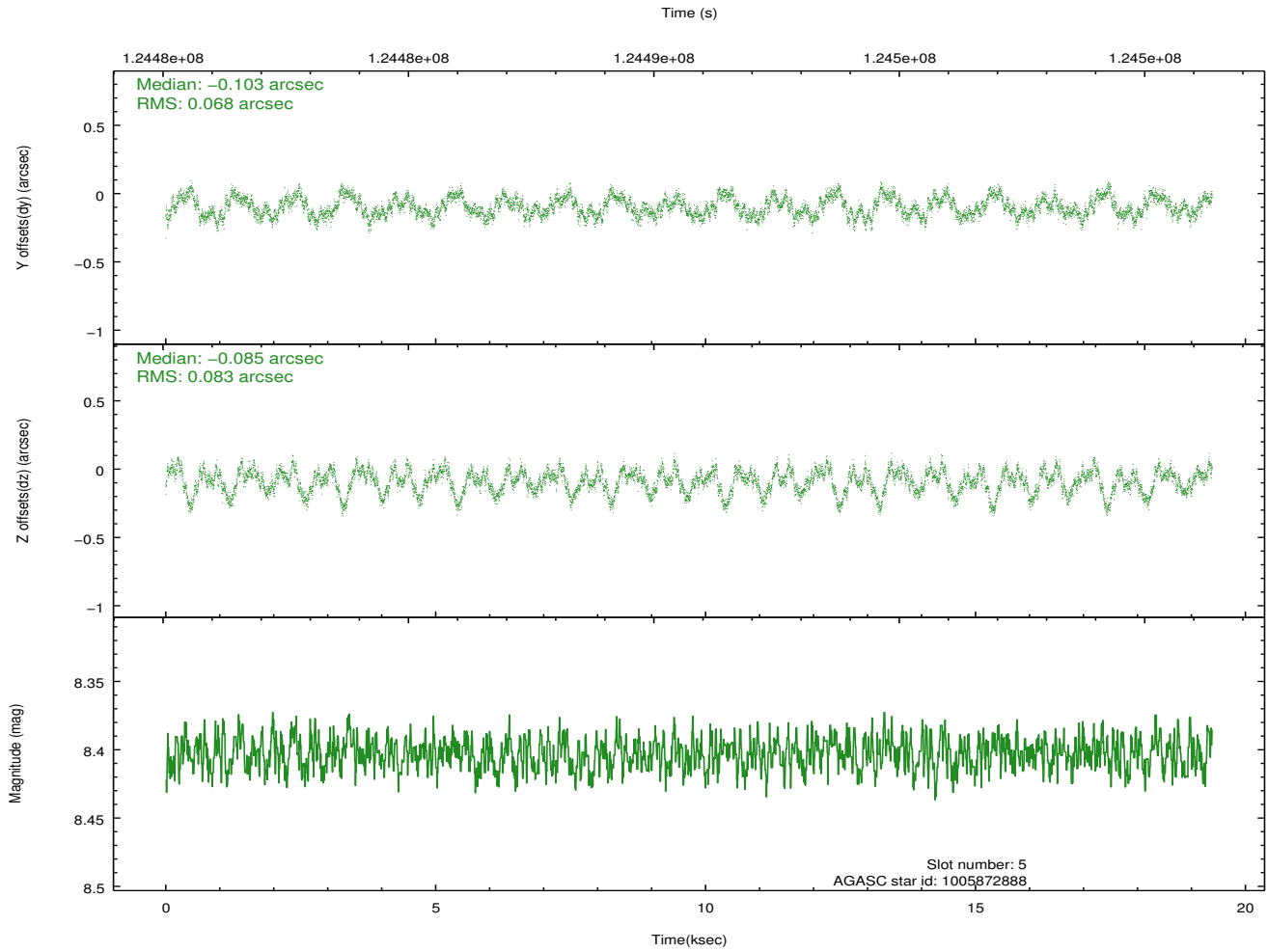
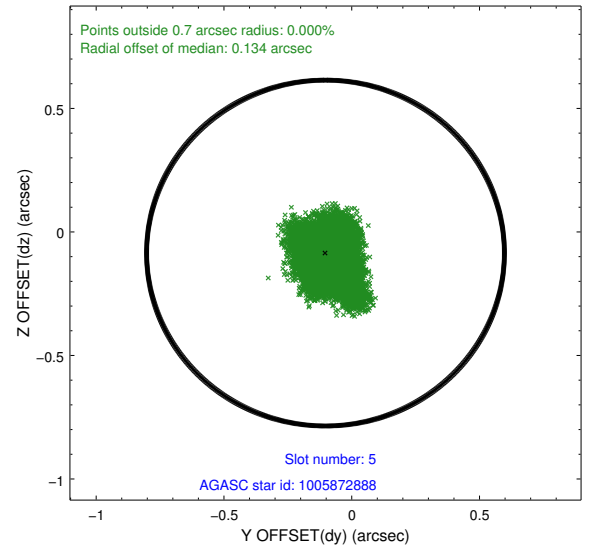
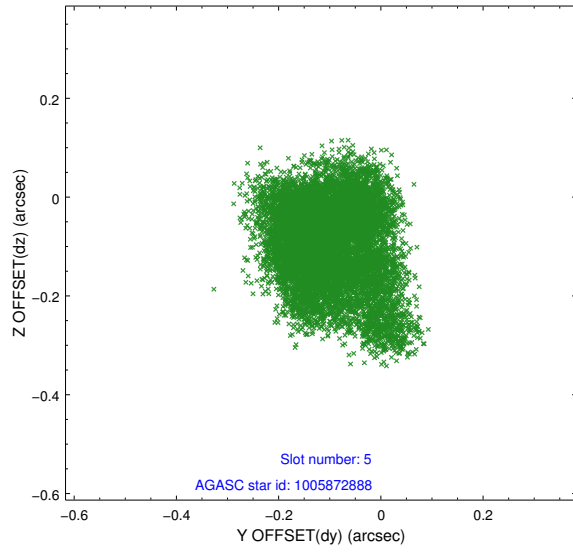
2.4.1 Slot 3



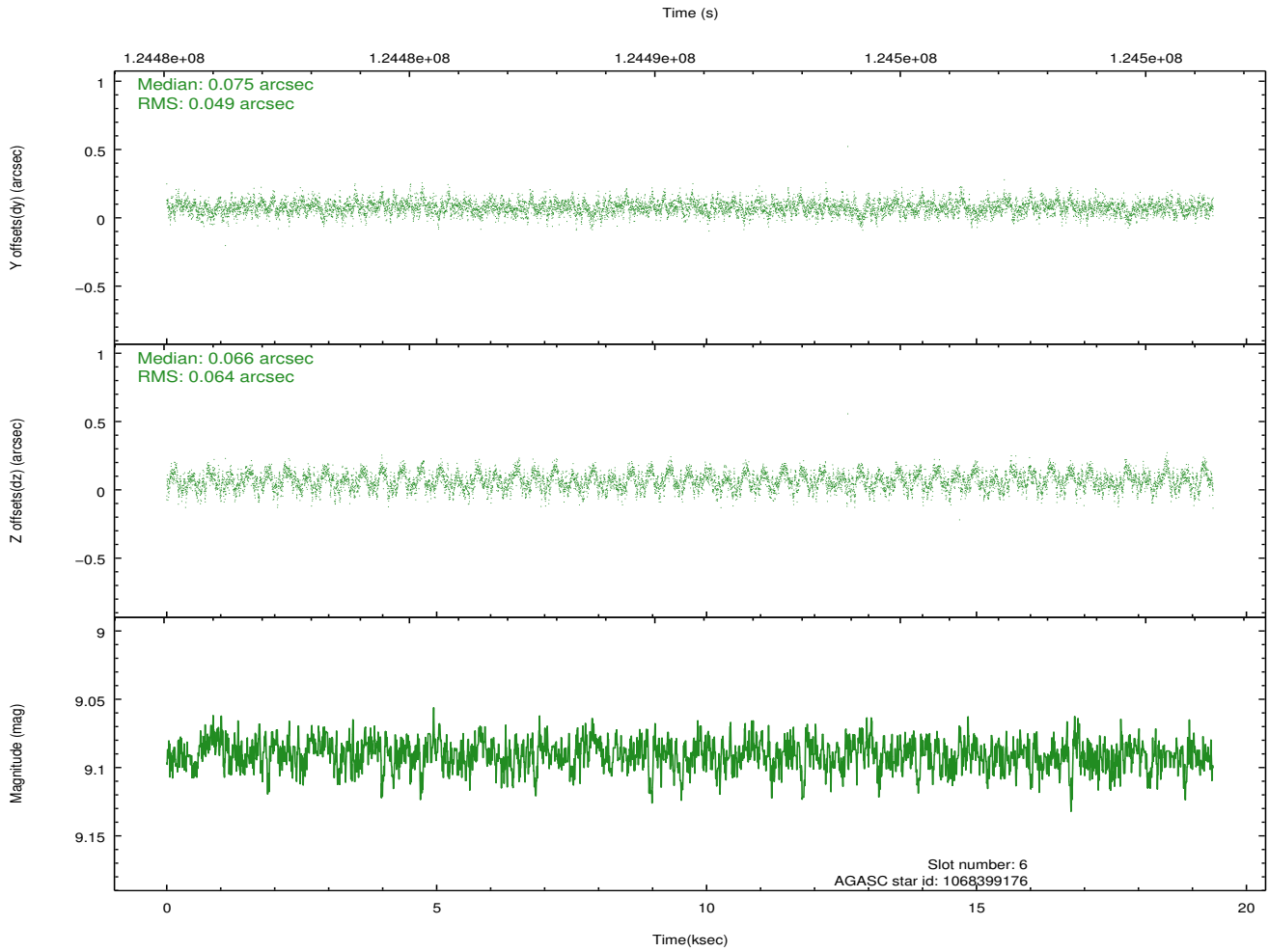
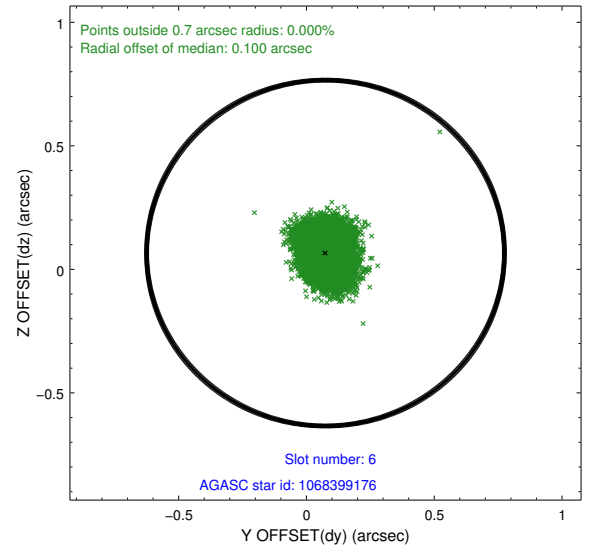
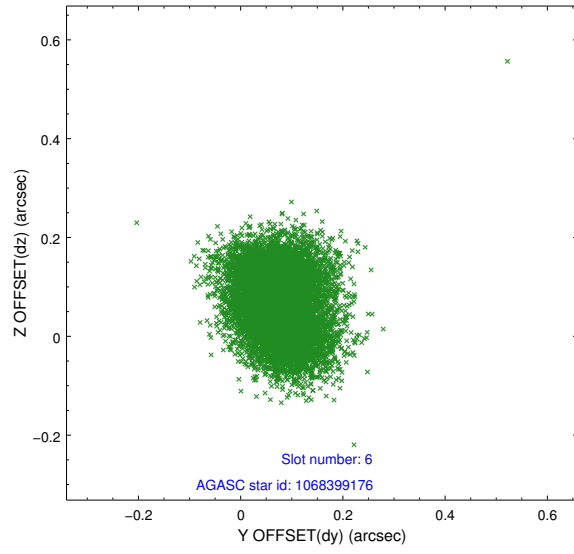
2.4.2 Slot 4



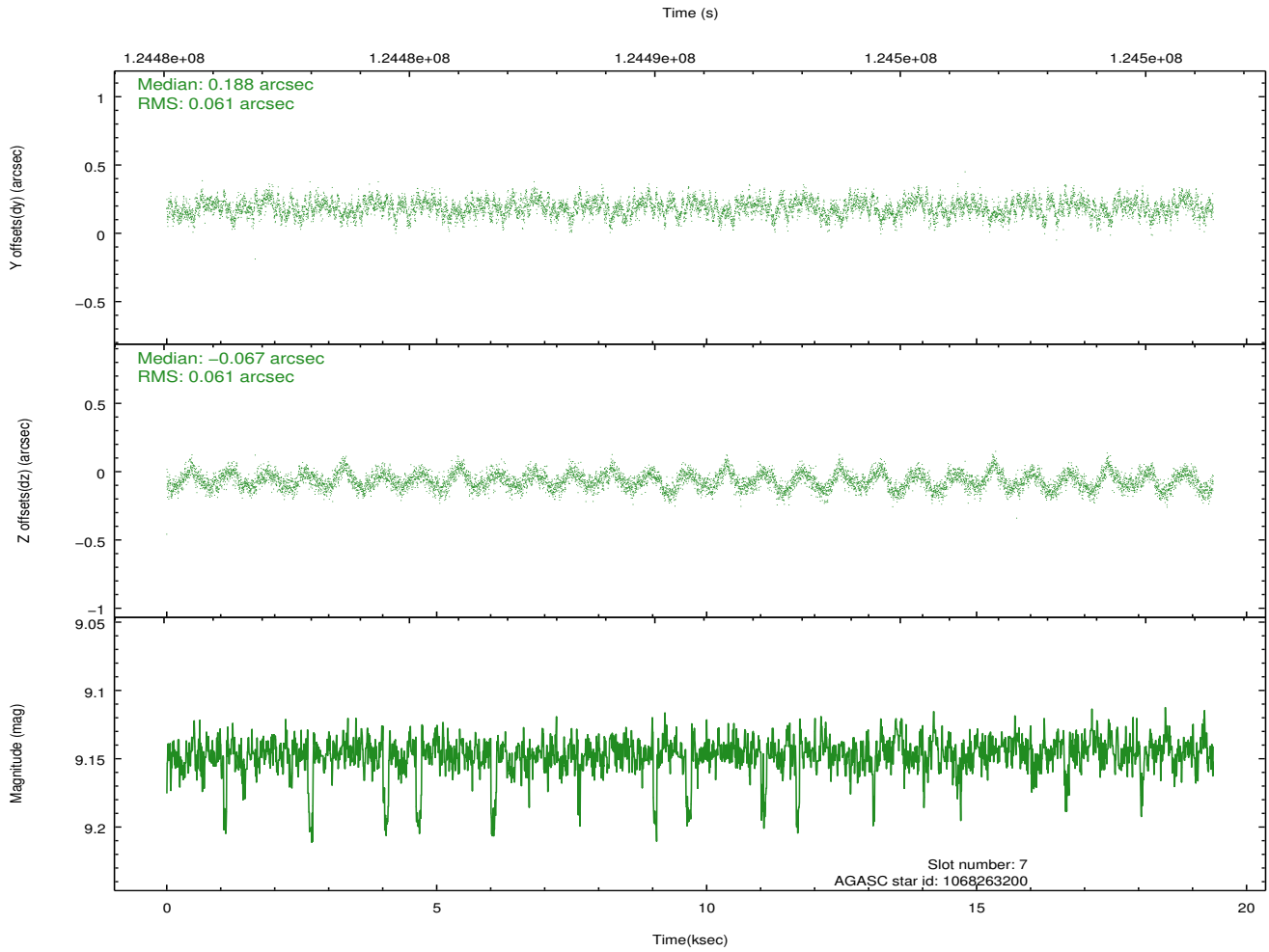
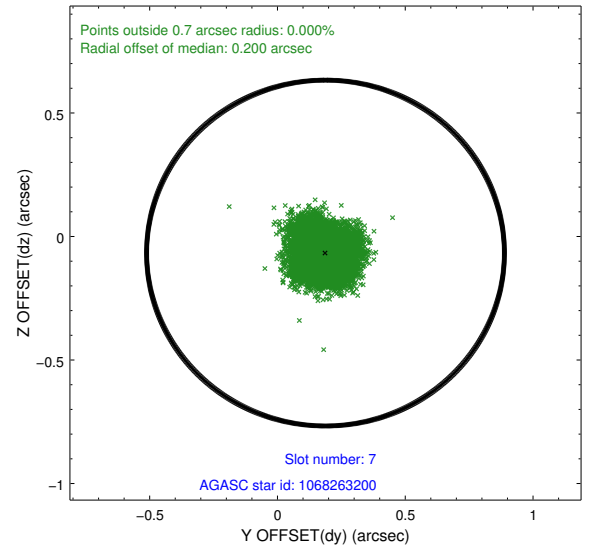
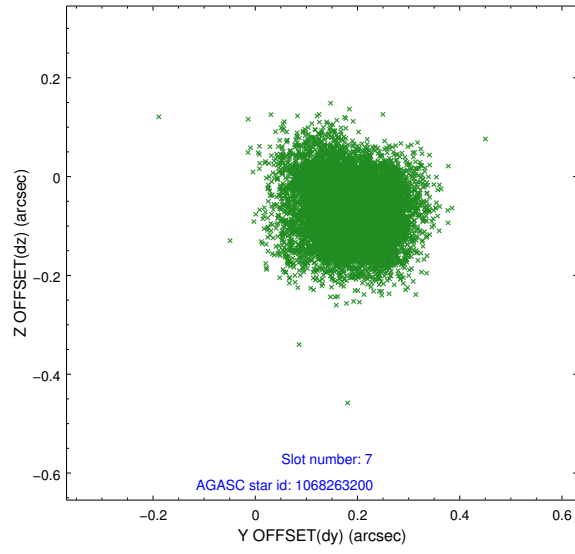
2.4.3 Slot 5



2.4.4 Slot 6

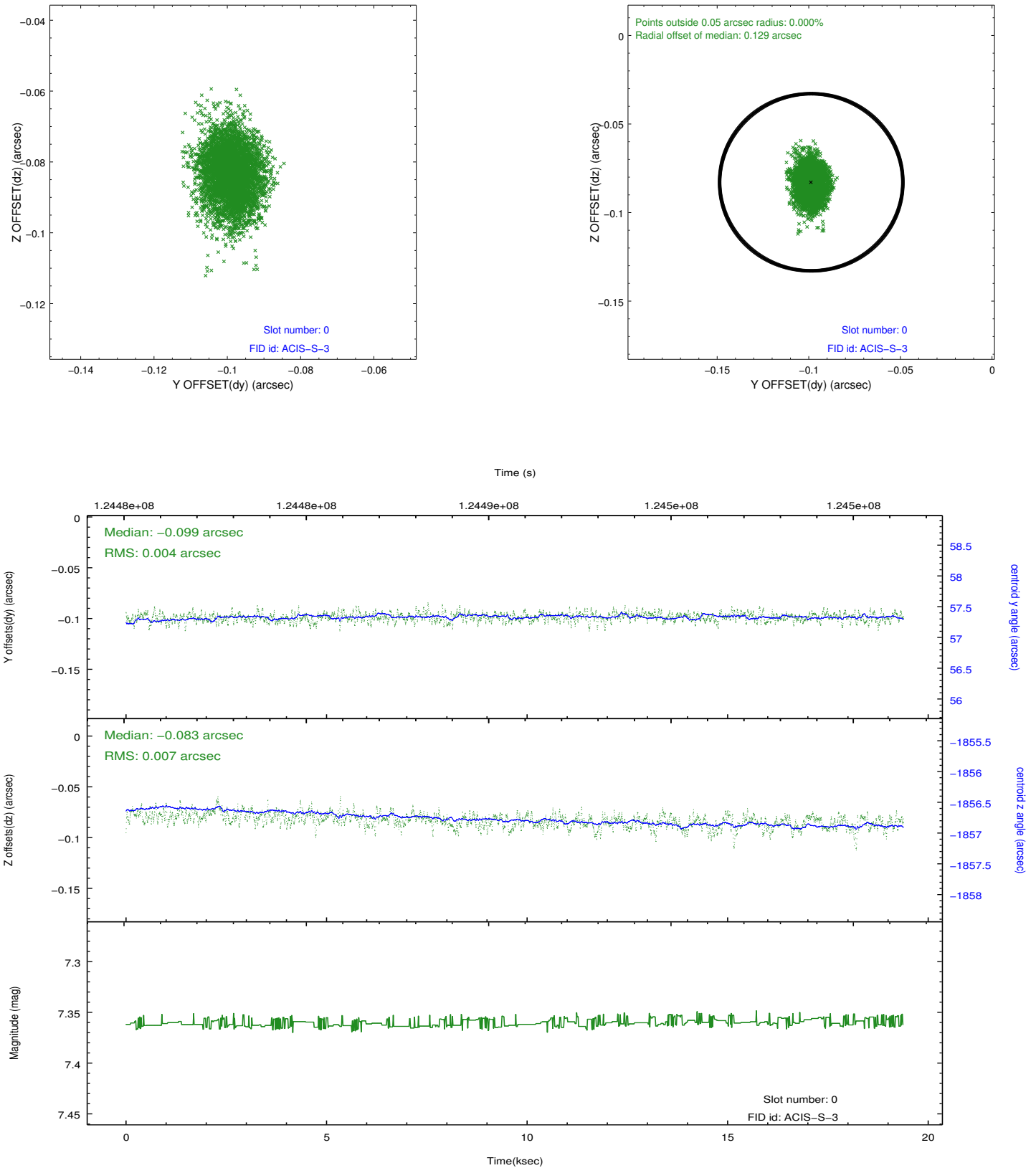


2.4.5 Slot 7

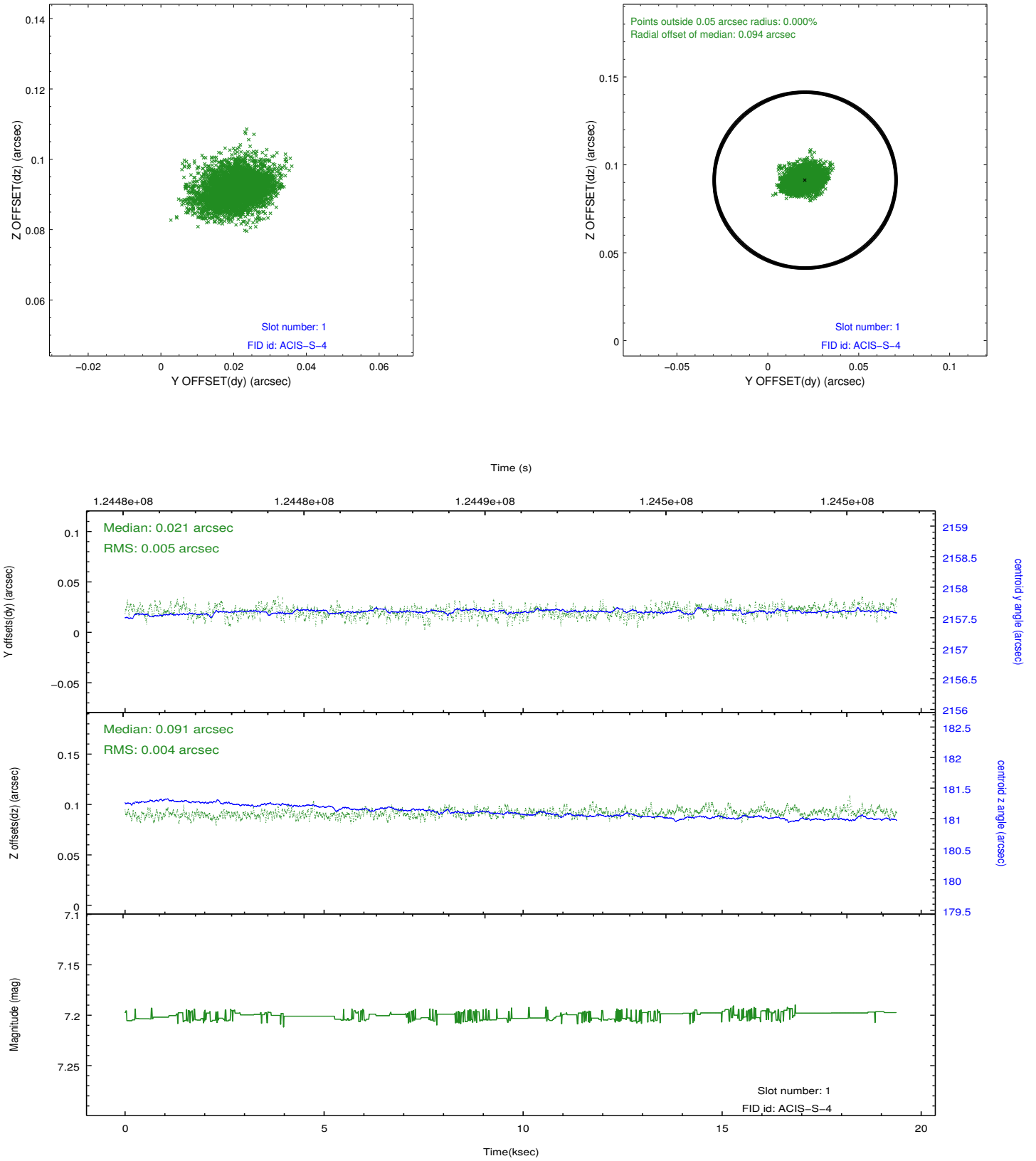


2.5 FID Slots

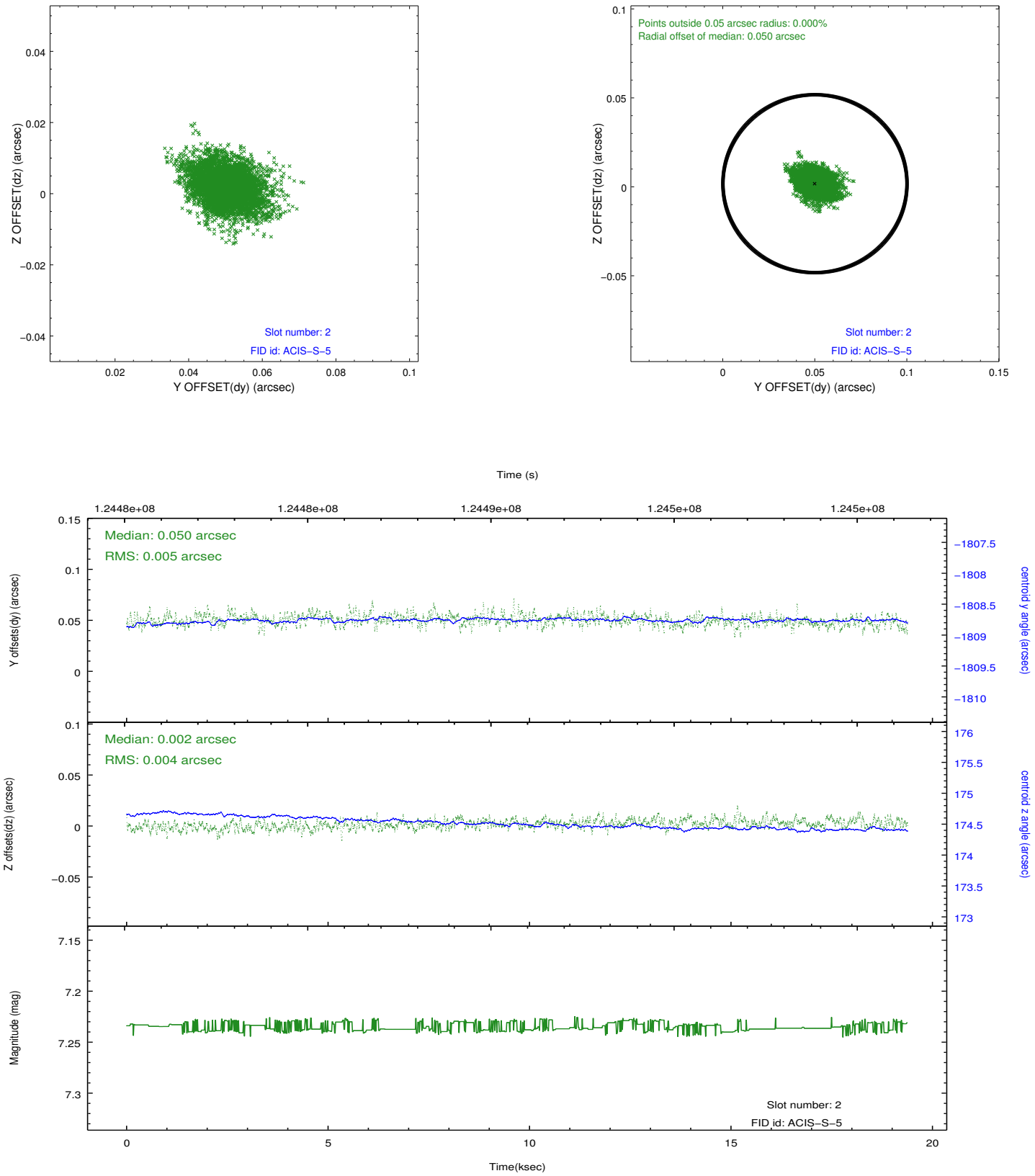
2.5.1 Slot 0



2.5.2 Slot 1



2.5.3 Slot 2



A Summary

A.1 Status

V&V Scientist	Beth Sundheim
V&V Date (YYYY-MM-DD)	2012.10.01
V&V Edition	1
V&V Disposition and Status	OK
V&V Charge Time	19.238

A.2 Comments