

# V&V Reference Report

## L2 ASCDS Version : 7.6.9

Observation 2810 - L2 Version 001  
Chandra X-Ray Center

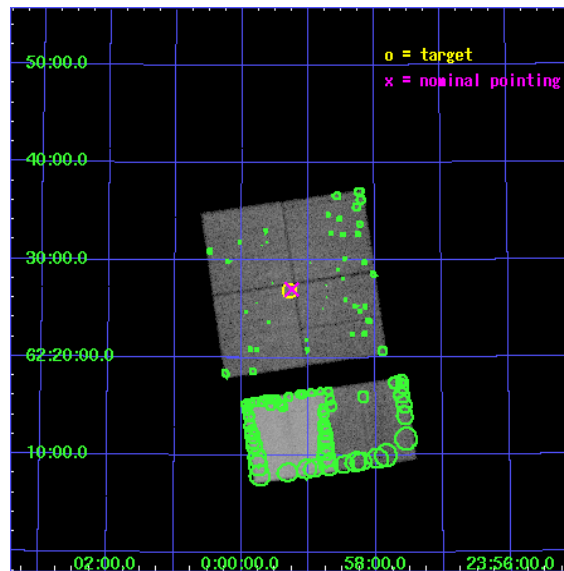
L2 Processing Date : Oct 4 2006

## Contents

<b>1</b>	<b>Front</b>	<b>2</b>
<b>2</b>	<b>OBI</b>	<b>3</b>
2.1	OBI . . . . .	3
2.1.1	Images . . . . .	3
2.1.2	Bias . . . . .	3
2.1.3	Parameters . . . . .	4
2.1.4	Events . . . . .	4
2.2	Compared Parameters . . . . .	5
2.3	Aspect . . . . .	6
2.4	Star Slots . . . . .	9
2.4.1	Slot 3 . . . . .	9
2.4.2	Slot 4 . . . . .	10
2.4.3	Slot 5 . . . . .	11
2.4.4	Slot 6 . . . . .	12
2.4.5	Slot 7 . . . . .	13
2.5	FID Slots . . . . .	14
2.5.1	Slot 0 . . . . .	14
2.5.2	Slot 1 . . . . .	15
2.5.3	Slot 2 . . . . .	16
<b>3</b>	<b>Point Sources</b>	<b>17</b>
<b>A</b>	<b>Summary</b>	<b>18</b>
A.1	Status . . . . .	18
A.2	Comments . . . . .	18

# 1 Front

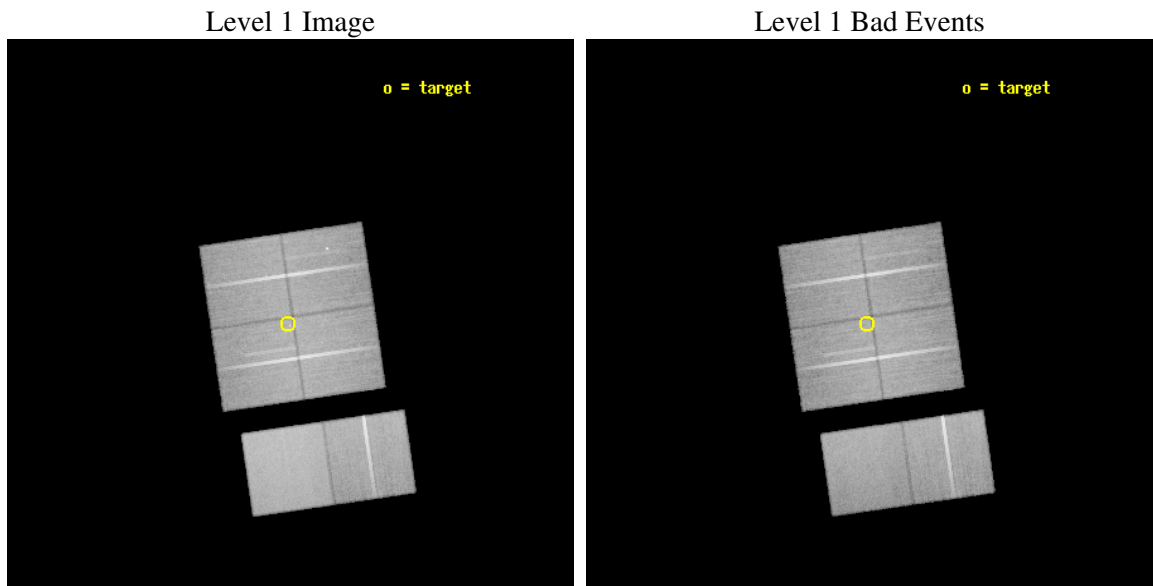
seq_num	500260
obs_id	2810
title	A CHANDRA SURVEY FOR COMPACT OBJECTS IN SUPERNOVA REMNANTS
observer	Prof. Shrinivas Kulkarni
object	G116.9+0.2
dtcycle	0
cycle	P
ra_targ	359.820833
dec_targ	62.448056
ra_nom	359.81221716289
dec_nom	62.450479709474
roll_nom	171.68574286574
revision	2
ontime	49961.558843613
livetime	49328.915502296
ontime0	49964.799813867
ontime1	49964.799813867
ontime2	49961.558823675
ontime3	49961.558843613
ontime6	49964.799813867
ontime7	49964.799813867
l2events	333203



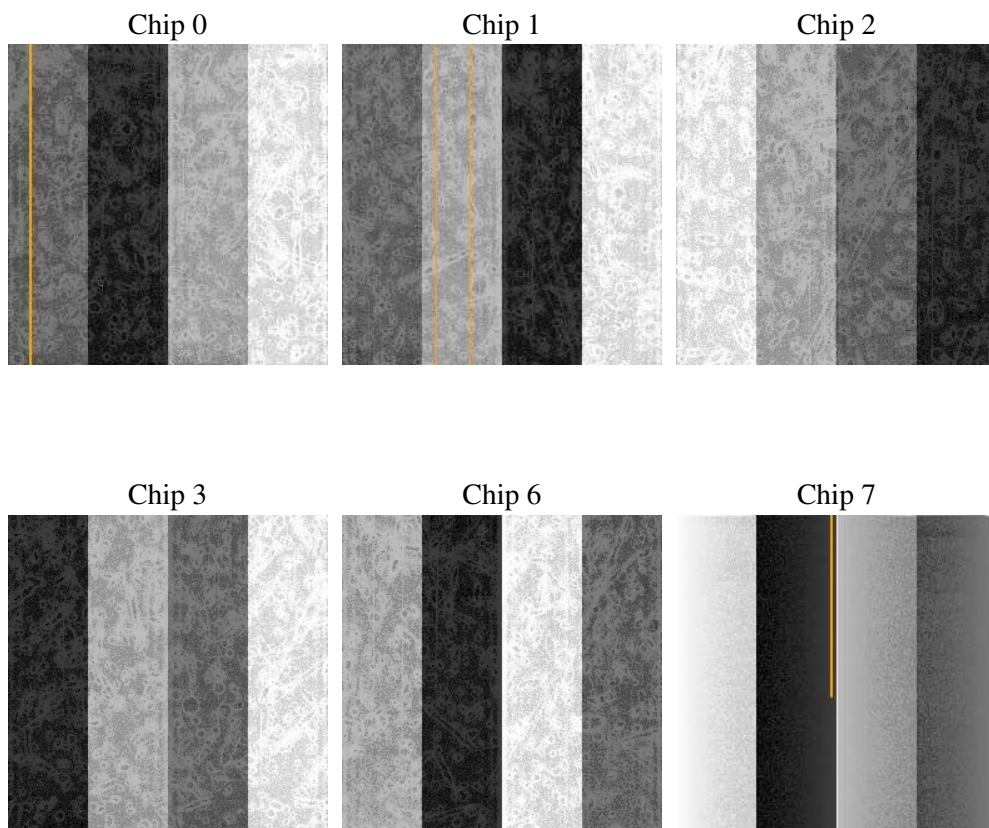
## 2 OBI

### 2.1 OBI

#### 2.1.1 Images



#### 2.1.2 Bias



### 2.1.3 Parameters

obi_num	1
ascdsver	7.6.9
caldsver	3.2.3
date	2006-10-04T11:45:16
revision	2

sched_exp_time	50000.000000
ontime	49966.524175018
ontime0	49969.765145272
ontime1	49969.765145272
ontime2	49966.52415508
ontime3	49966.524175018
ontime6	49966.524125189
ontime7	49966.524145126
l1events	1946173

### 2.1.4 Events

	ccd 0	ccd 1	ccd 2	ccd 3	ccd 6	ccd 7
level 1 events	289977	294891	319026	307315	325511	409453
rejected events	245318	250963	276867	265836	287742	255127
rejected %	84%	85%	86%	86%	88%	62%

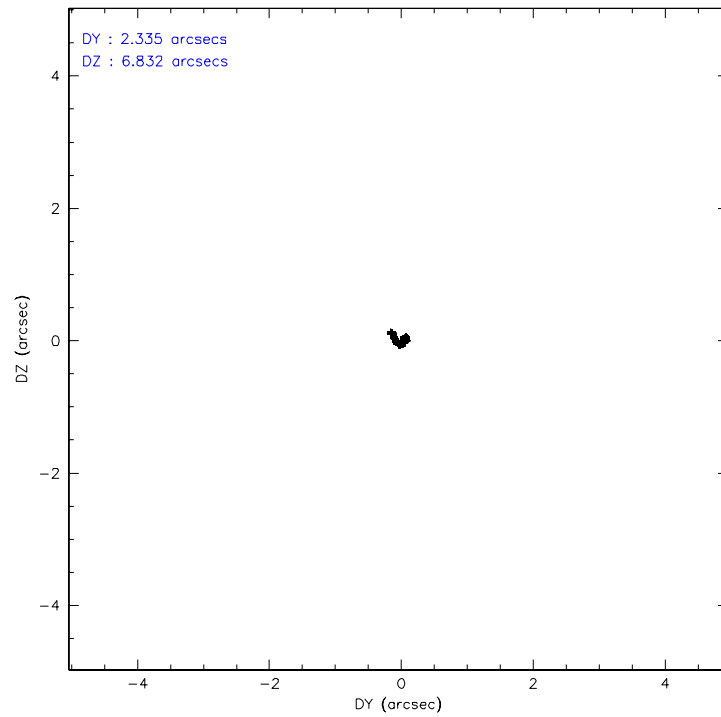
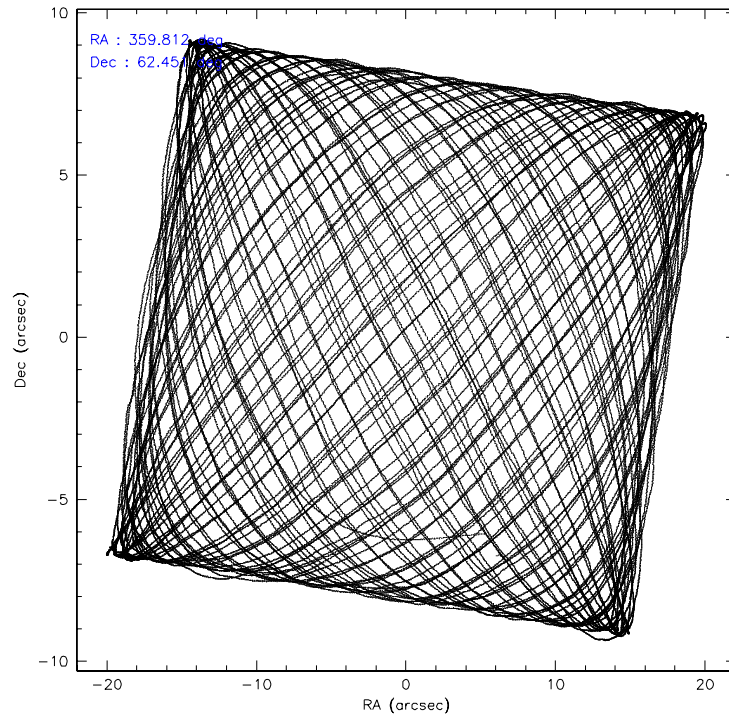
	ccd 0	ccd 1	ccd 2	ccd 3	ccd 6	ccd 7
grade 0 events	22856	20145	21524	20754	15570	8627
	7%	6%	6%	6%	4%	2%
grade 1 events	197	142	182	203	159	243
	0%	0%	0%	0%	0%	0%
grade 2 events	8100	8301	7684	7095	7516	37582
	2%	2%	2%	2%	2%	9%
grade 3 events	3841	3961	3653	3681	3731	7780
	1%	1%	1%	1%	1%	1%
grade 4 events	3546	3989	3460	3639	3562	7457
	1%	1%	1%	1%	1%	1%
grade 5 events	12231	12769	11749	13095	14406	26272
	4%	4%	3%	4%	4%	6%
grade 6 events	6317	7536	5841	6314	7390	92880
	2%	2%	1%	2%	2%	22%
grade 7 events	232889	238048	264933	252534	273177	228612
	80%	80%	83%	82%	83%	55%

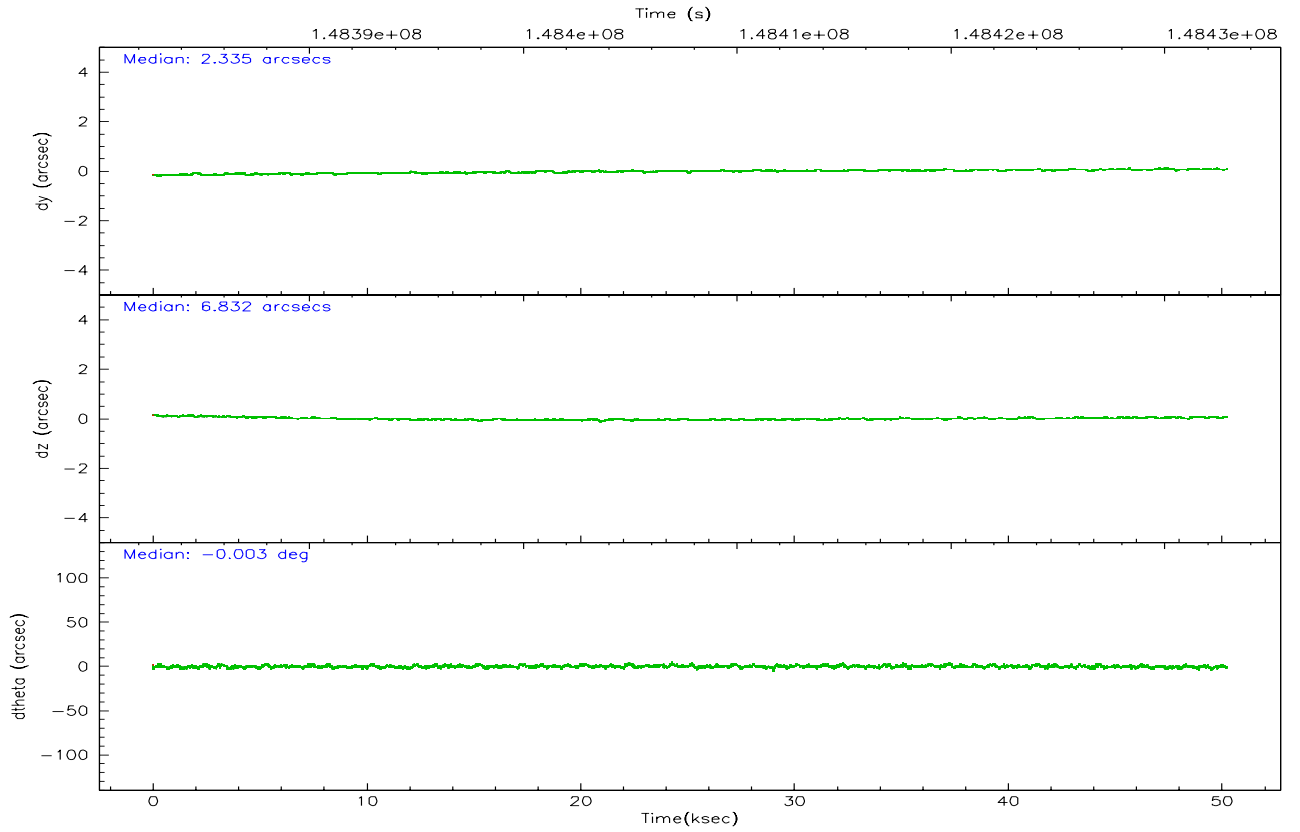
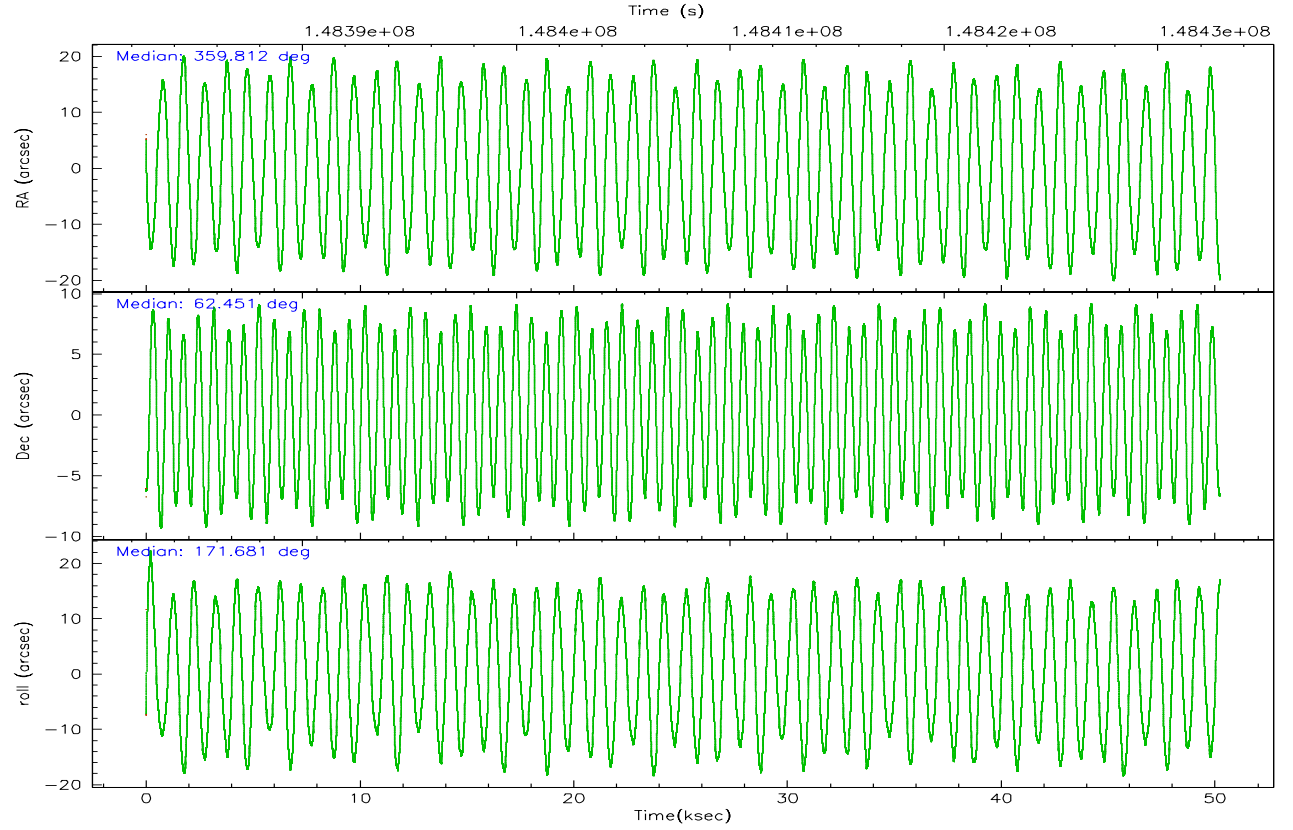


## 2.2 Compared Parameters

Parameter	Planned	Actual	Parameter	Planned	Actual
Instrument	ACIS	ACIS	Obspar format version number	6	6
Detector	ACIS-012367	ACIS-012367	Obspar file type	PREDICTED	ACTUAL
Grating	NONE	NONE	Obspar update status	NONE	UPDATED
Data mode	FAINT	FAINT	Number of optional ACIS chips dropped	0	0
Observation mode	POINTING	POINTING	On-chip summing requested	N	N
Pointing RA	359.867208	359.8122171628862	Subarray requested	NONE	NONE
Pointing Dec	62.460678	62.45047970947418	Alternating exposures requested	N	N
Pointing Roll	171.428296	171.6857428657366	Primary exposure time	0.000000	3.2
SIM focus pos (mm)	-0.782348	-0.7809083437167272			
SIM defocus (mm)	0	0.001439871863259334			
SIM translation stage pos (mm)	-233.592463	-233.5874344608287			
SIM translation stage offset (mm)	0	-0.005018542100998502			
Observation start time	148382911.184000	148381922.0521			
Observation start date	2002-09-14T09:27:27	2002-09-14T09:12:02			
Observation end time	148432911.184000	148433249.44172			
Observation end date	2002-09-14T23:20:47	2002-09-14T23:27:29			
Read mode	TIMED	TIMED			

## 2.3 Aspect



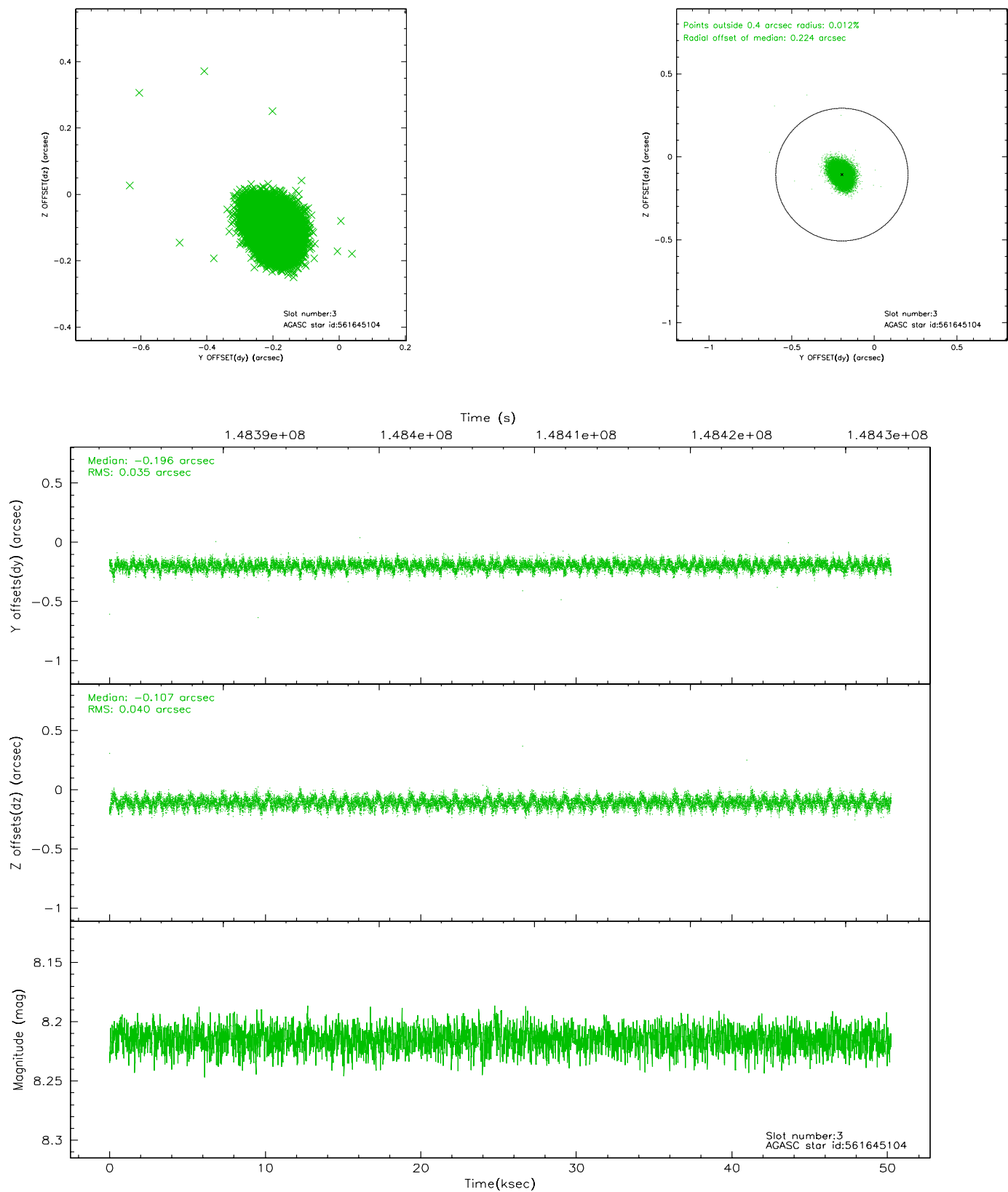


### Slot Statistics

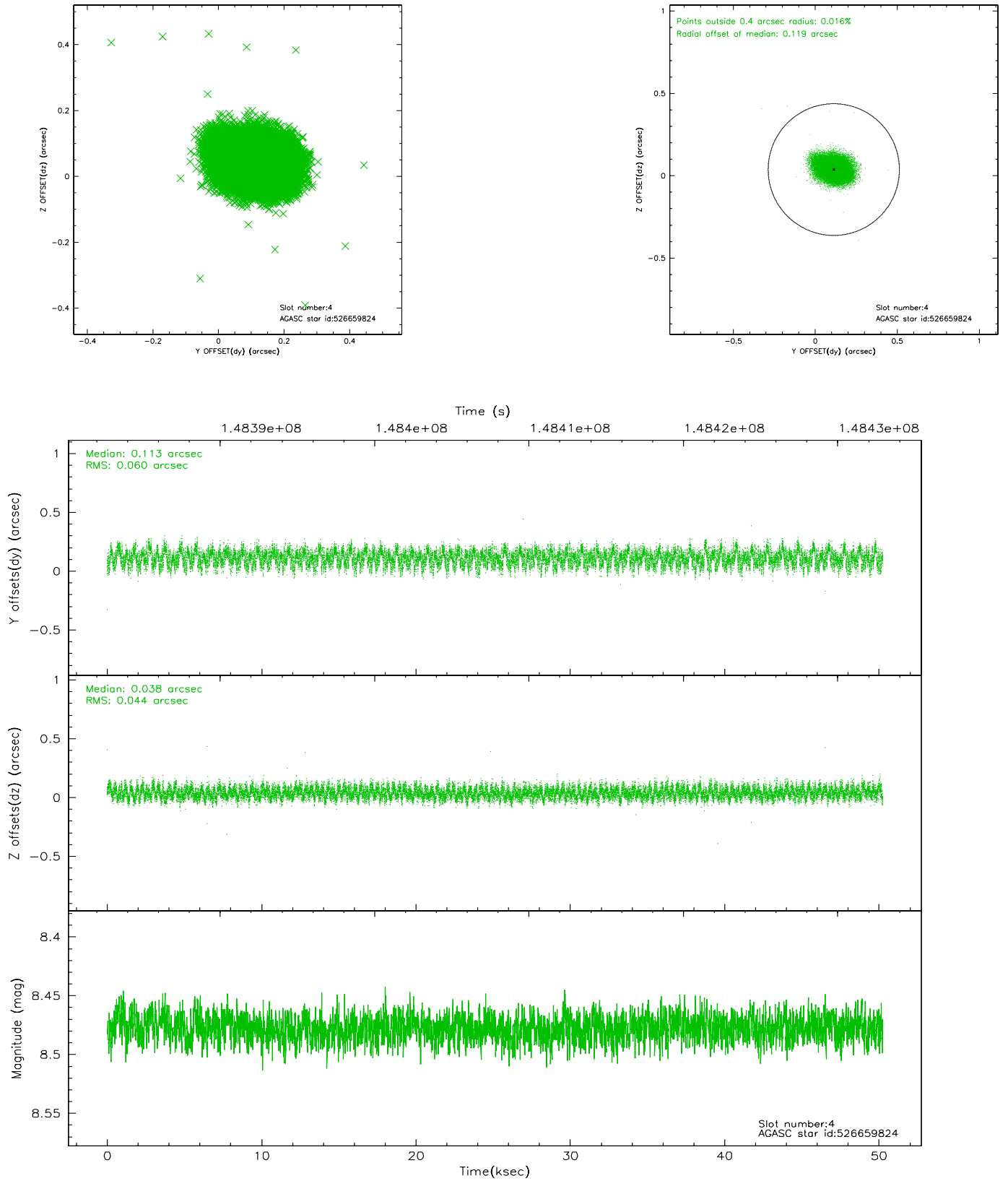
slot	status	id	mag	n_pts	med_dy	med_dz	dr1	dr2	ra	dec	mean_y	mean_z
0	FID	ACIS-I-2	7.14	12255	-0.029	-0.113	0.015	0.024	0.000000	0.000000	-756.71	-836.71
1	FID	ACIS-I-3	7.45	12254	-0.055	0.187	0.015	0.027	0.000000	0.000000	54.80	-963.34
2	FID	ACIS-I-4	7.18	12254	-0.014	-0.008	0.007	0.013	0.000000	0.000000	2157.43	1069.58
3	GUIDE	561645104	8.22	24493	-0.196	-0.107	0.056	0.092	359.168427	62.189809	1016.14	1133.62
4	GUIDE	526659824	8.48	24507	0.113	0.038	0.079	0.126	0.419867	62.018081	-1159.61	1433.31
5	GUIDE	526661600	8.43	24507	0.112	0.031	0.066	0.112	1.015818	62.221942	-2030.72	546.41
6	GUIDE	561654712	9.01	24459	0.050	0.065	0.102	0.177	358.600220	63.192520	2430.25	-2317.69
7	GUIDE	561646784	9.67	24498	-0.077	-0.025	0.113	0.178	358.403406	62.537588	2448.54	61.99

## 2.4 Star Slots

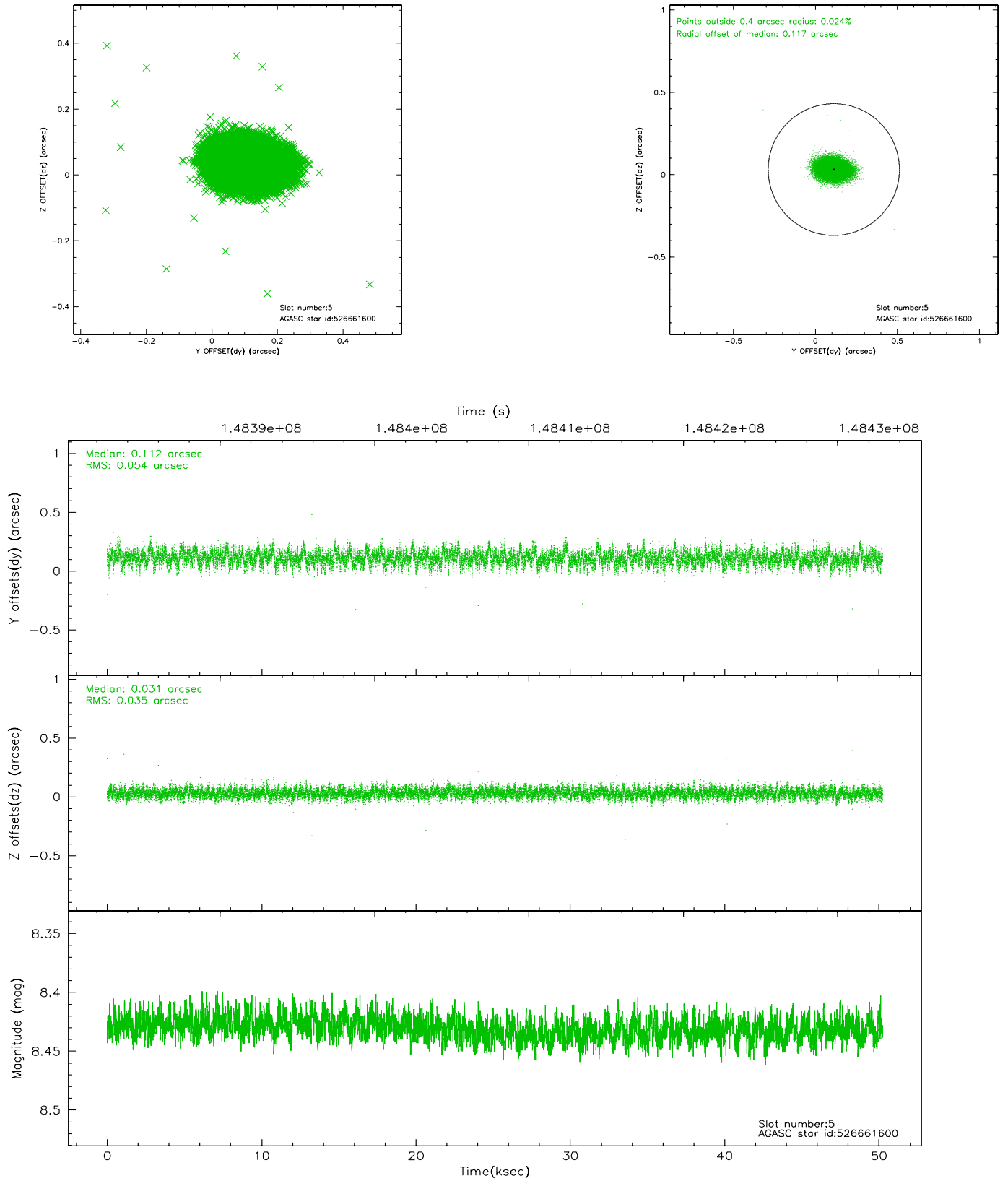
### 2.4.1 Slot 3



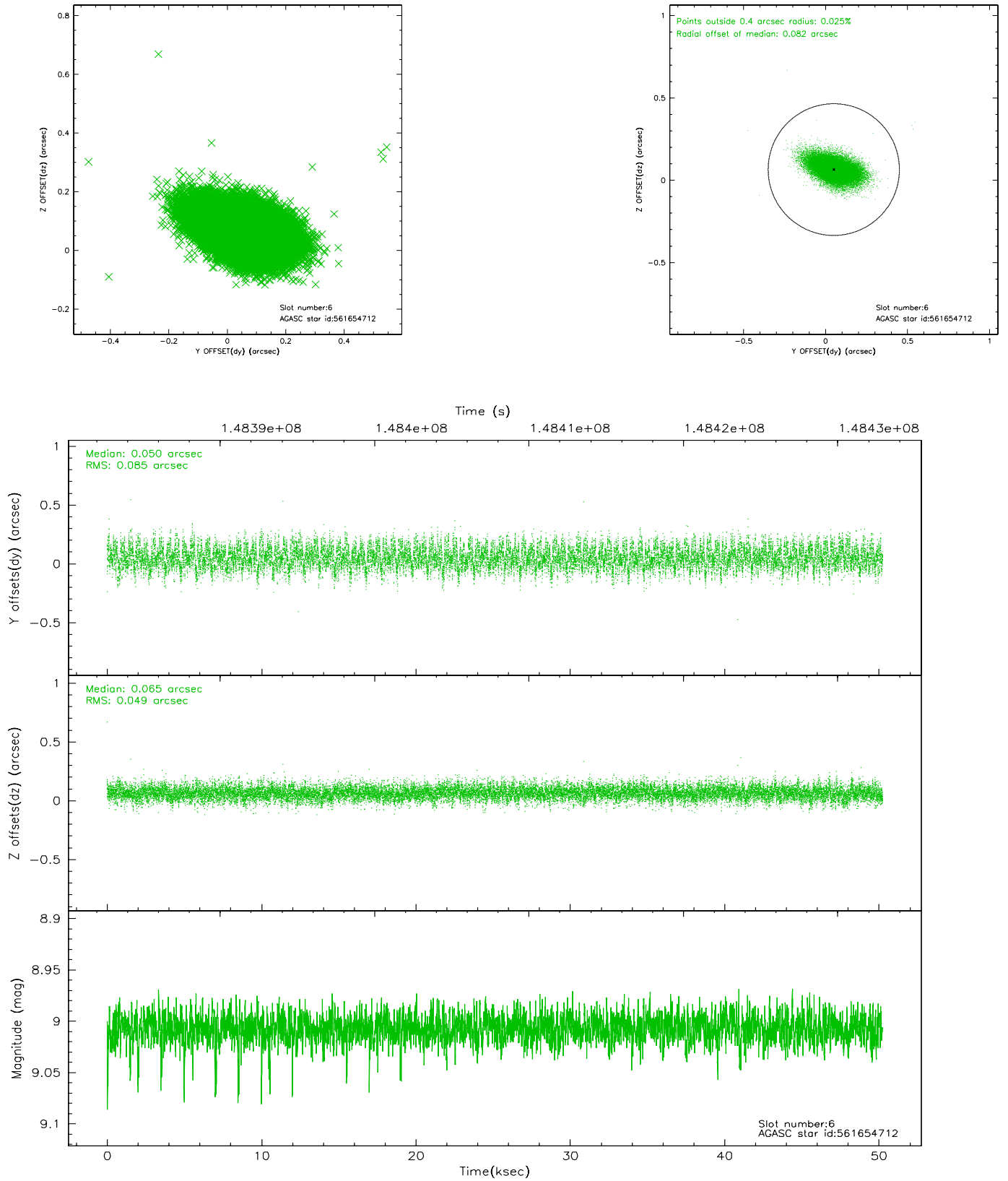
## 2.4.2 Slot 4



### 2.4.3 Slot 5

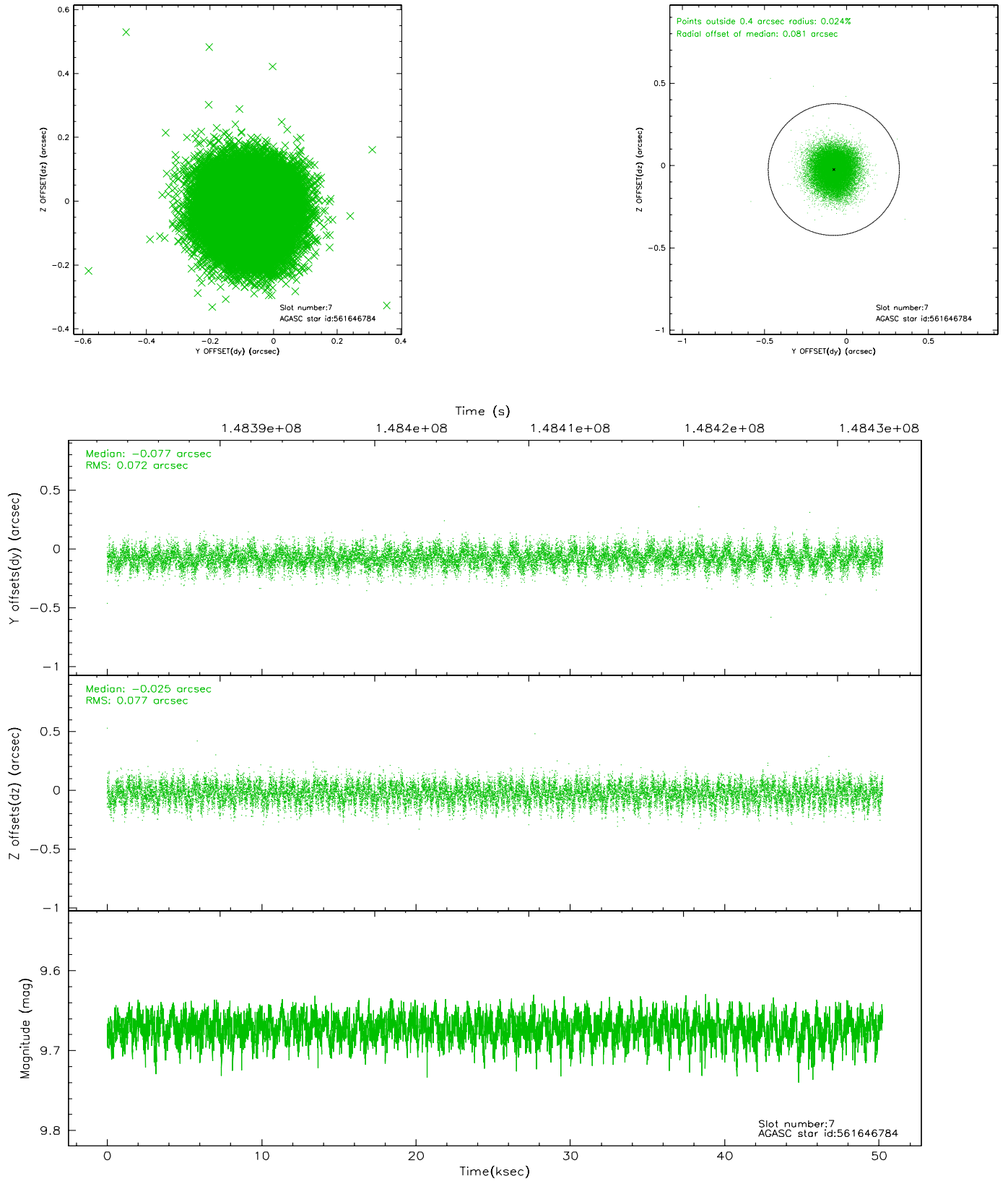


## 2.4.4 Slot 6



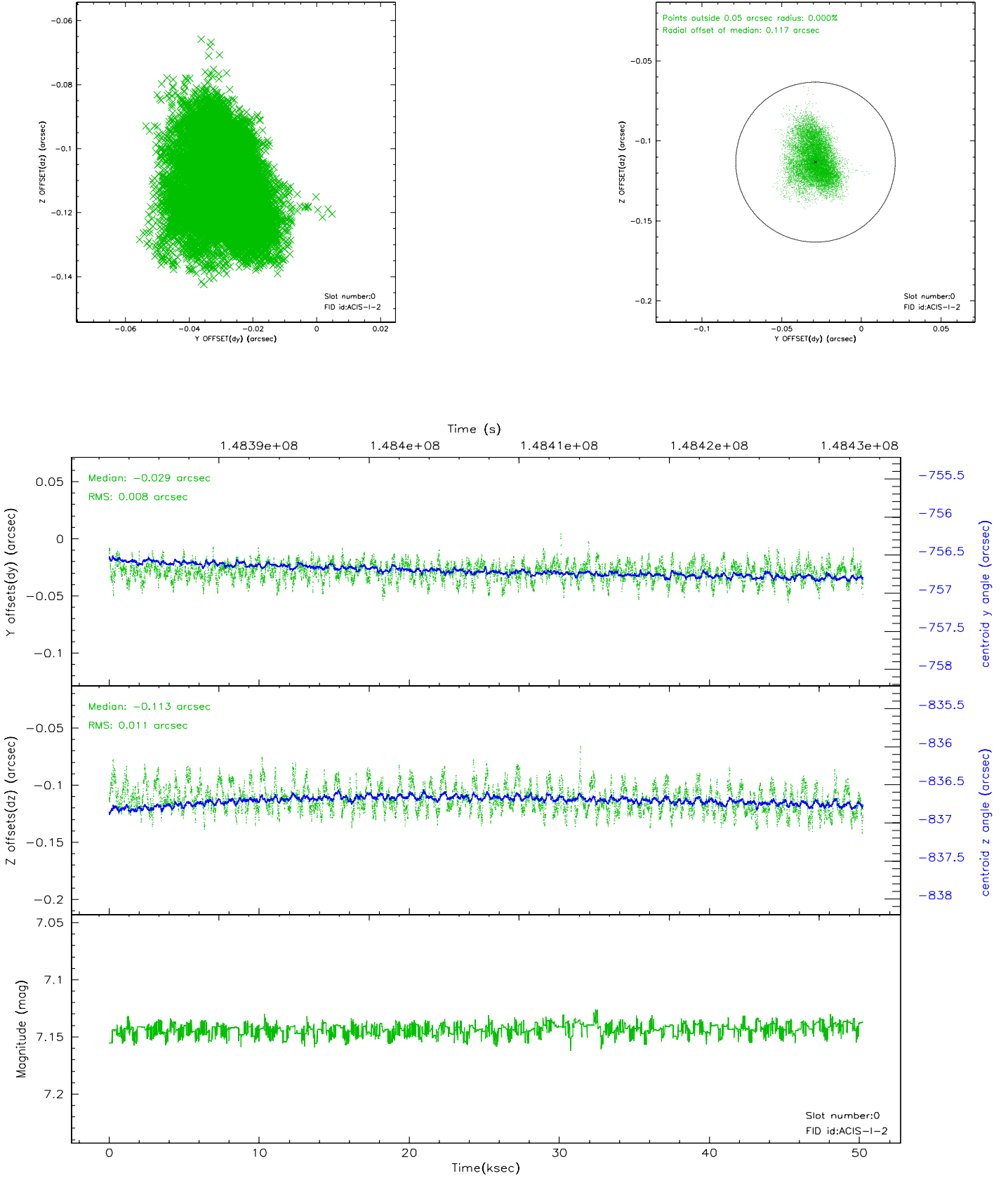


## 2.4.5 Slot 7

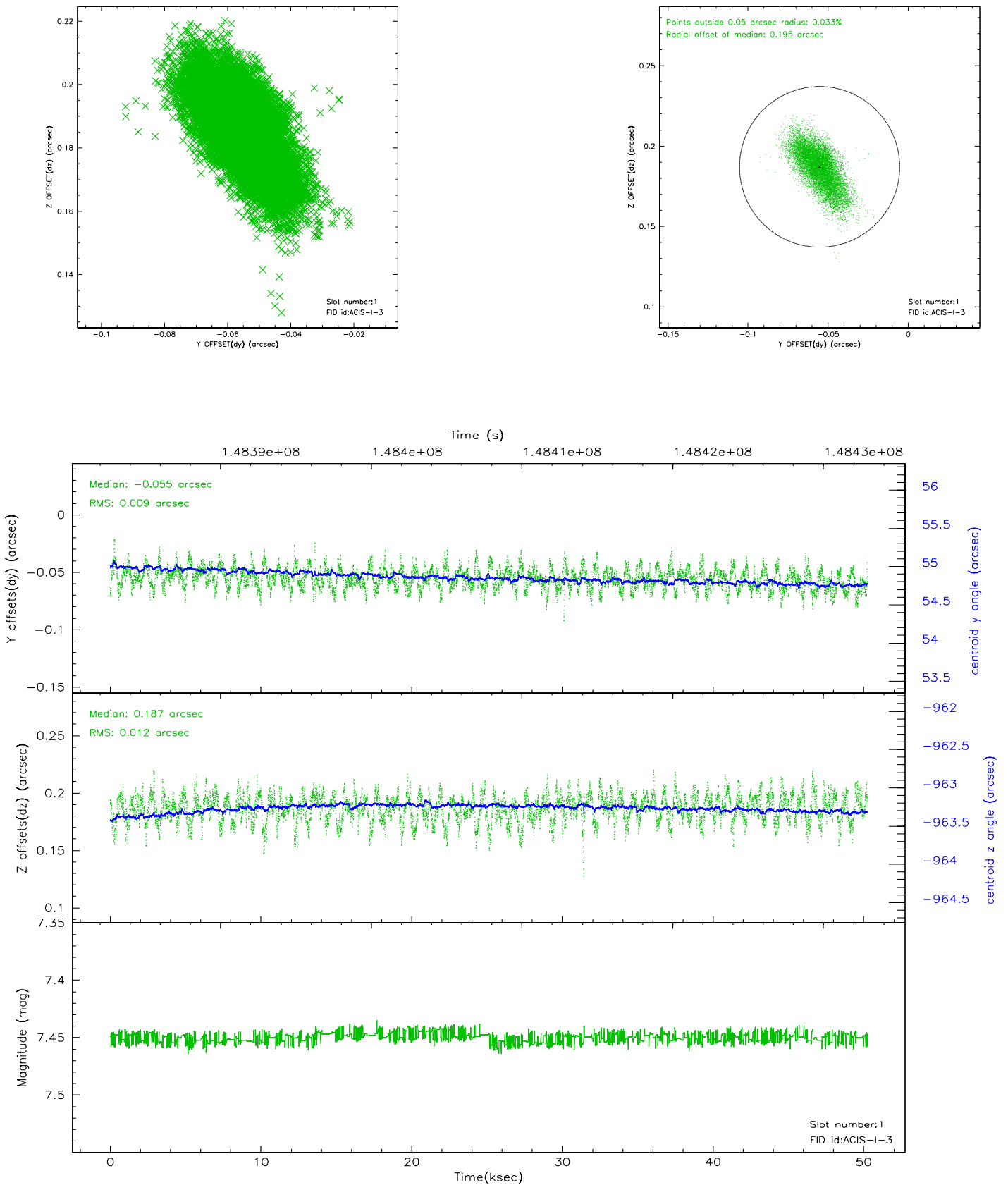


## 2.5 FID Slots

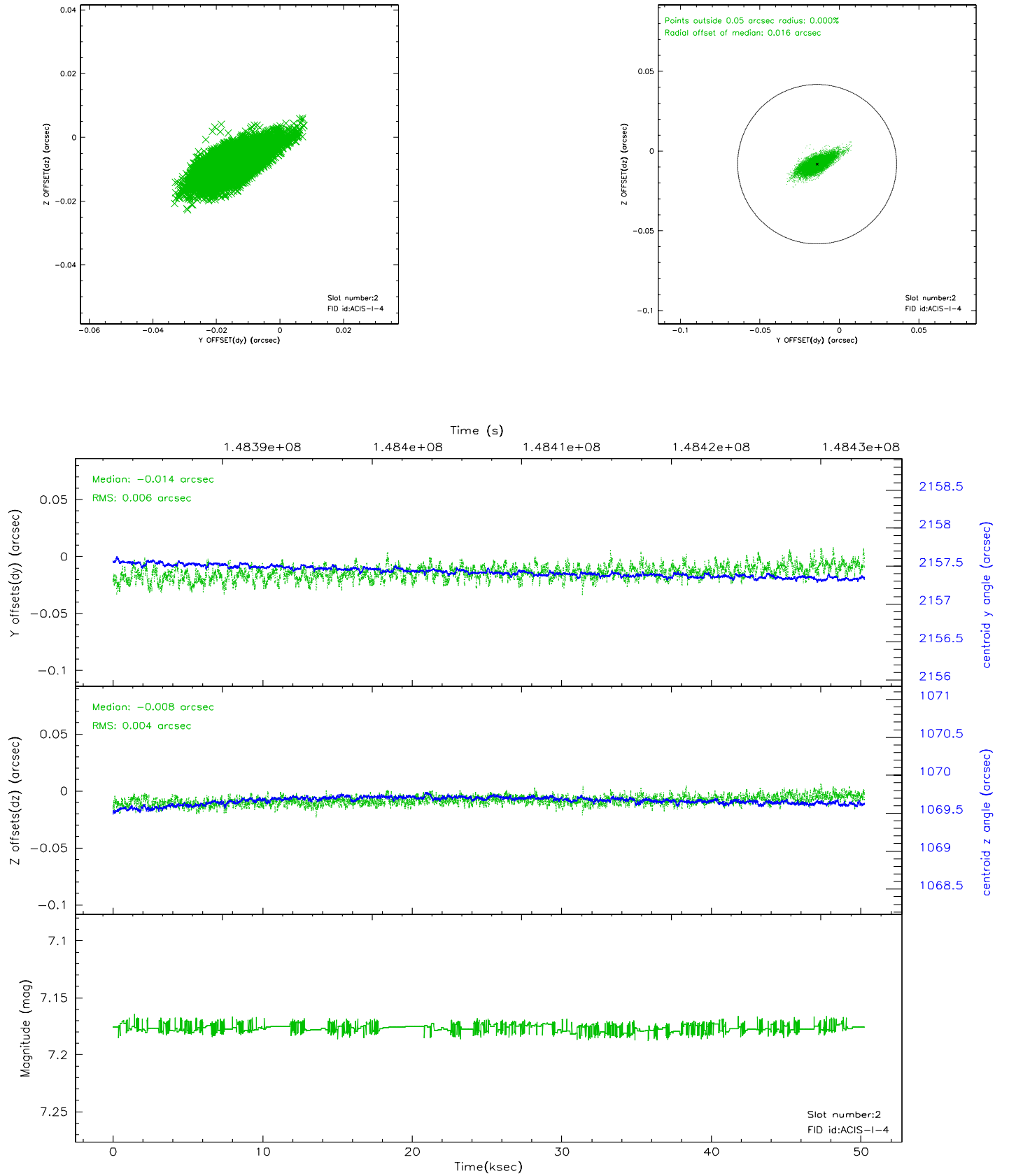
### 2.5.1 Slot 0



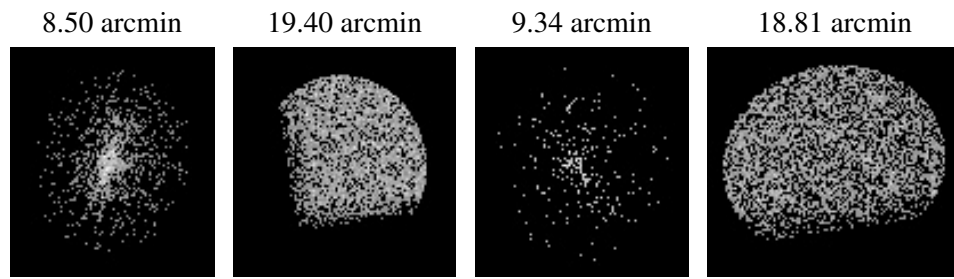
## 2.5.2 Slot 1



### 2.5.3 Slot 2



### 3 Point Sources



## A Summary

### A.1 Status

V&V Scientist	Beth Sundheim
V&V Date (YYYY-MM-DD)	2006.10.04
V&V Edition	1
V&V Disposition and Status	OK
V&V Charge Time	49.961

### A.2 Comments