

V&V Reference Report

L2 ASCDS Version : 8.4.5

Observation 3488 - L2 Version 3
Chandra X-Ray Center

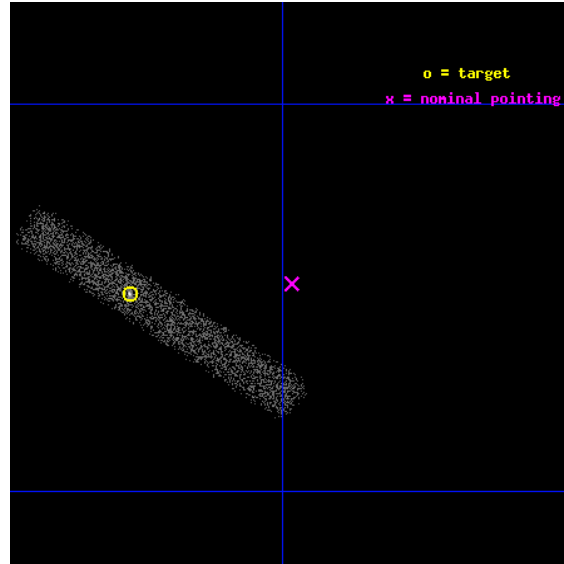
L2 Processing Date : Oct 11 2012

Contents

1	Front	2
2	OBI	3
2.1	OBI	3
2.1.1	Images	3
2.1.2	Bias	3
2.1.3	Parameters	4
2.1.4	Events	4
2.2	Compared Parameters	5
2.3	Aspect	6
2.4	Star Slots	9
2.4.1	Slot 3	9
2.4.2	Slot 4	10
2.4.3	Slot 5	11
2.4.4	Slot 6	12
2.4.5	Slot 7	13
2.5	FID Slots	14
2.5.1	Slot 0	14
2.5.2	Slot 1	15
2.5.3	Slot 2	16
A	Summary	17
A.1	Status	17
A.2	Comments	17

1 Front

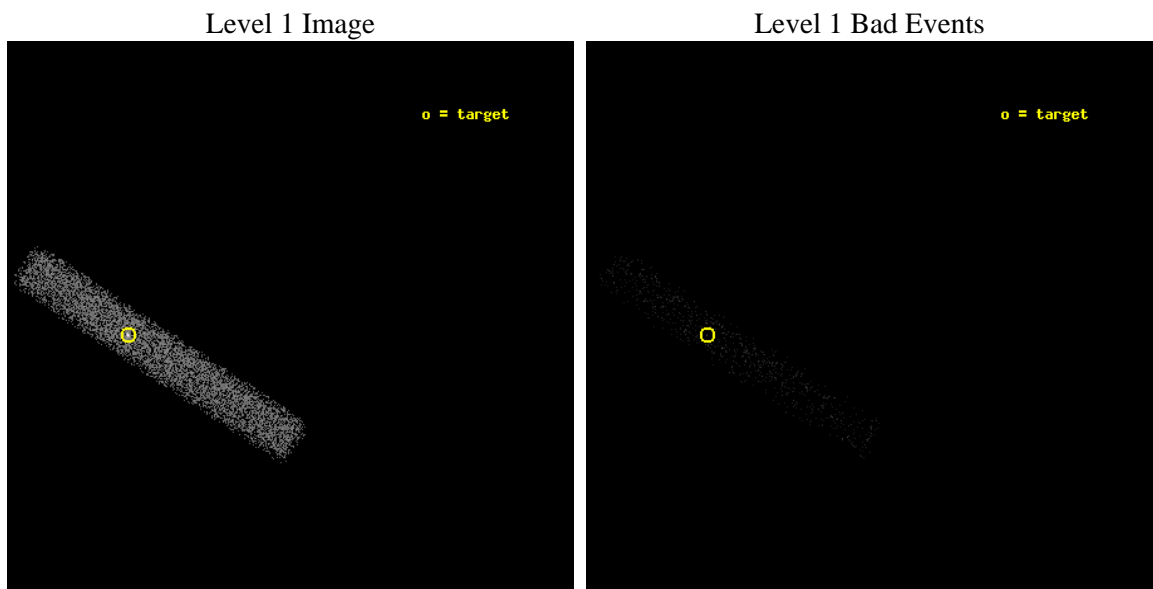
seq_num	400254	Sequence number
obs_id	3488	Observation id
title	VARIABLE THERMAL EMISSION AND FEATURE FROM AQL X-1 IN QUIESCENCE	P
observer	Prof. Robert Rutledge	Principal investigator
object	AQL X-1	Source name
dtcycle	0	
cycle	P	events from which exps? Prim/Second/Both
ra_targ	287.816667	Observer's specified target RA [deg]
dec_targ	0.585	Observer's specified target Dec [deg]
ra_nom	287.74602360711	Nominal RA [deg]
dec_nom	0.58932808502246	Nominal Dec [deg]
roll_nom	213.19801787828	Nominal Roll [deg]
revision	3	Processing version of data
ontime	7172.0001068413	Sum of GTIs [s]
livetime	6504.6255276994	Livetime [s]
ontime7	7172.0001068413	Sum of GTIs [s]
l2events	5198	Number of level 2 events



2 OBI

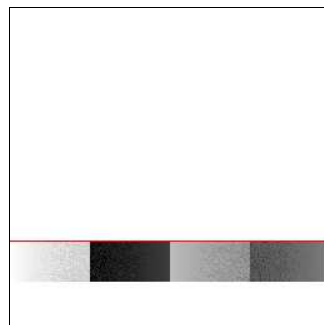
2.1 OBI

2.1.1 Images



2.1.2 Bias

Chip 7



2.1.3 Parameters

obi_num	0	Obi number	sched_exp_time	7000.000000	[s] Scheduled observation exposure time
ascdsver	8.4.5	Processing system revision	ontime	7172.0001068413	Sum of GTIs [s]
caldsver	4.5.2	 	ontime7	7172.0001068413	Sum of GTIs [s]
date	2012-10-11T15:41:25	Date and time of file creation	l1events	10612	Number of level 1 events
revision	3	Processing version of data			

2.1.4 Events

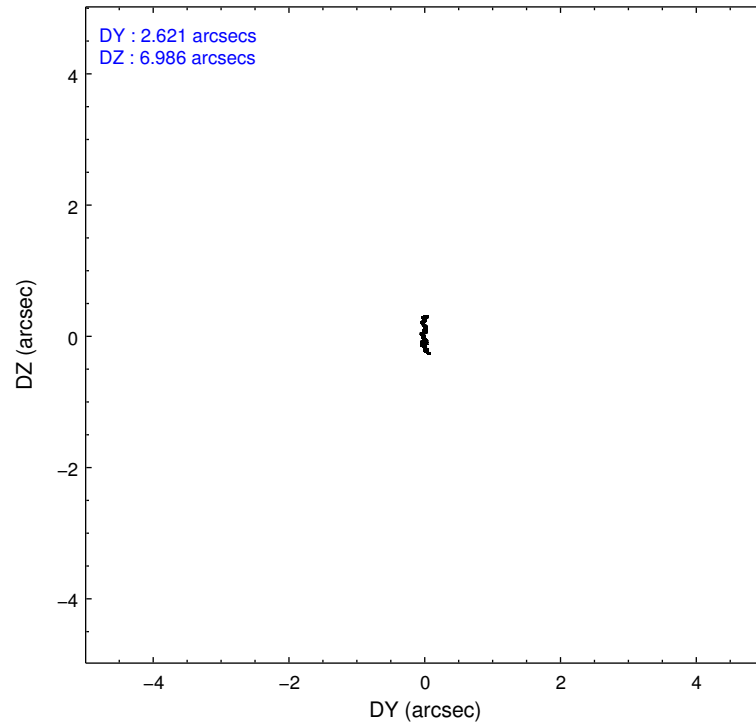
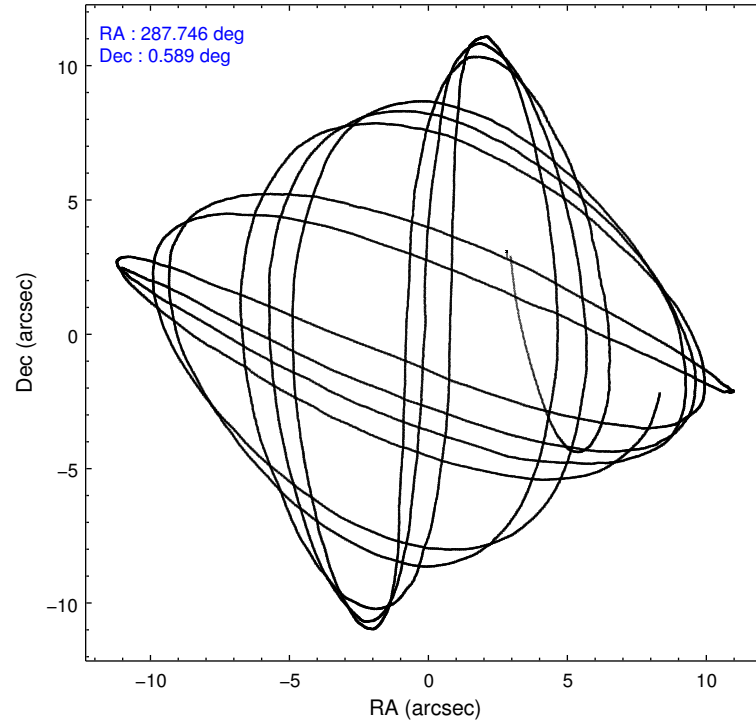
	ccd 7
level 1 events	10612
rejected events	5304
rejected %	49%

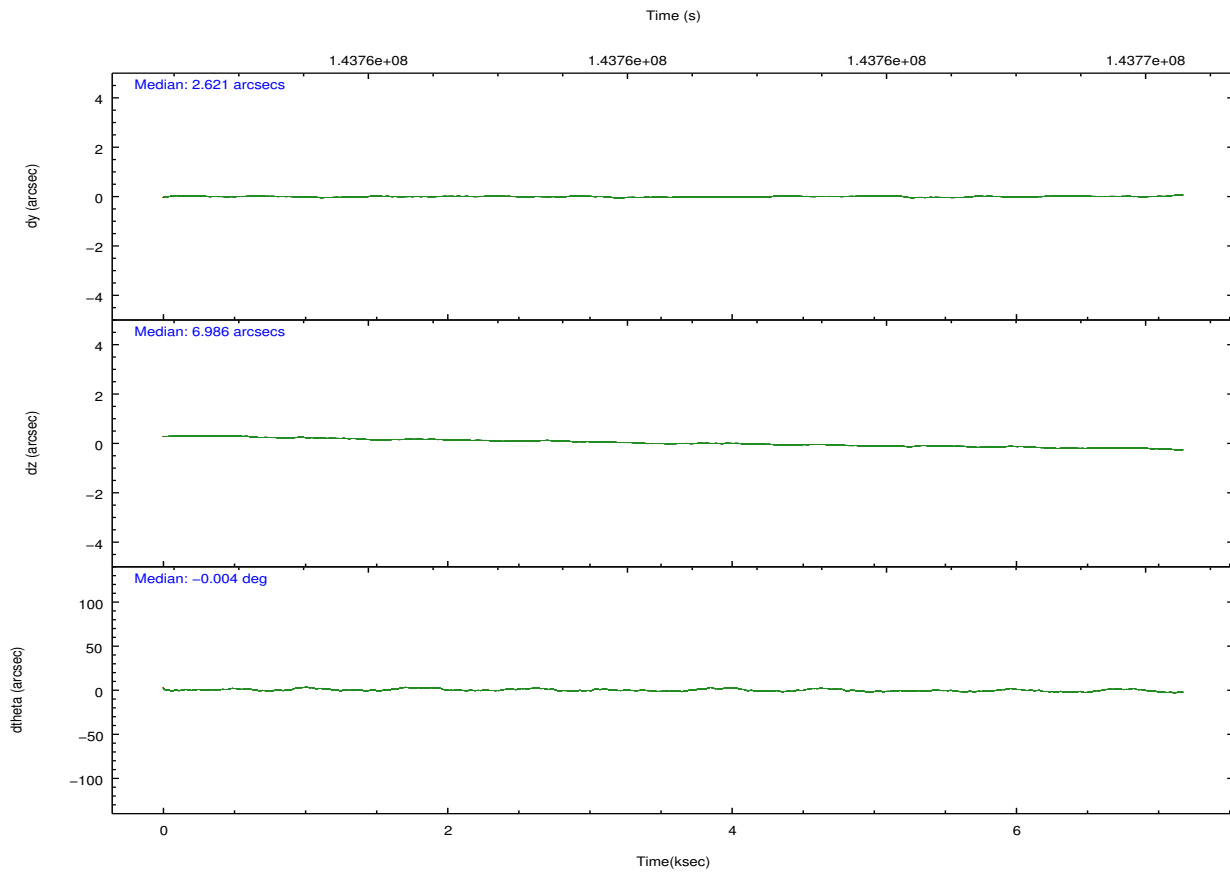
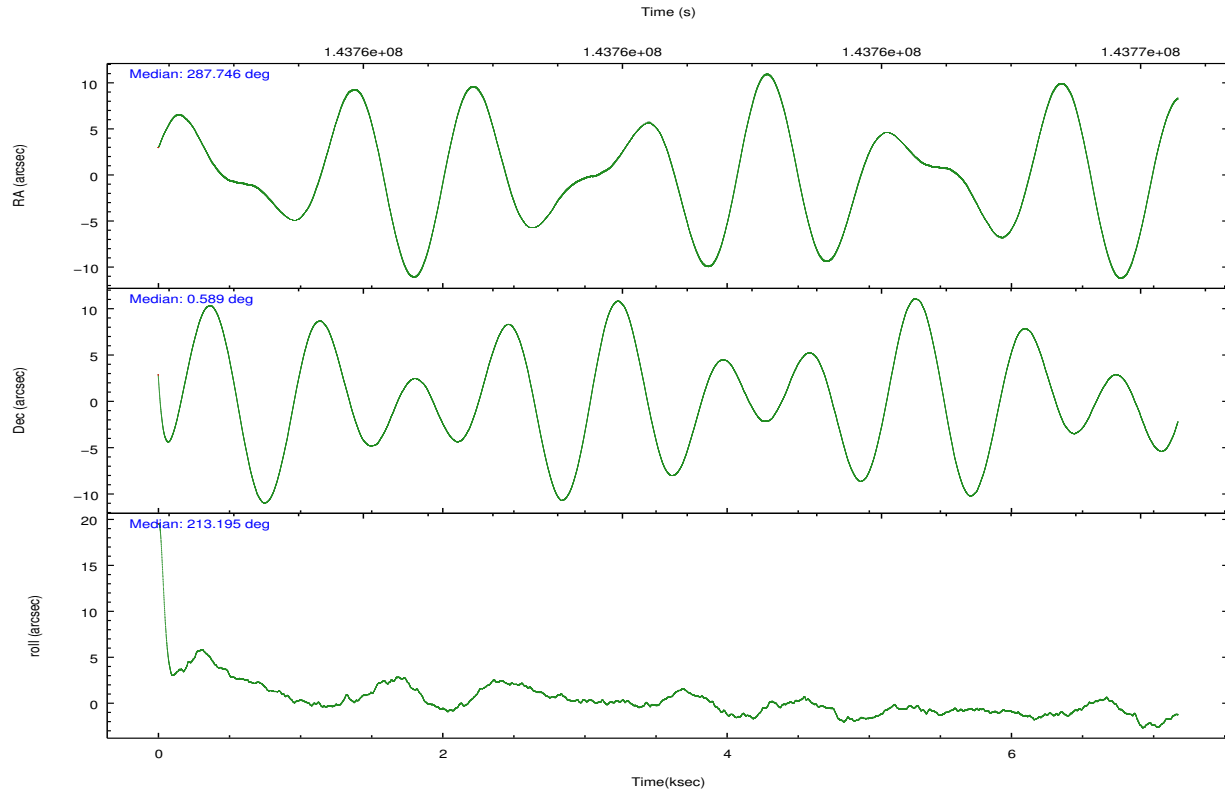
	ccd 7
grade 0 events	734
	6%
grade 1 events	11
	0%
grade 2 events	1201
	11%
grade 3 events	707
	6%
grade 4 events	680
	6%
grade 5 events	835
	7%
grade 6 events	2492
	23%
grade 7 events	3952
	37%

2.2 Compared Parameters

Parameter	Planned	Actual	Parameter	Planned	Actual
Instrument	ACIS	ACIS	Obspar format version number	7	7
Detector	ACIS-7	ACIS-7	Obspar file type	PREDICTED	ACTUAL
Grating	NONE	NONE	Obspar update status	NONE	UPDATED
Data mode	FAINT	FAINT	Number of optional ACIS chips dropped	0	0
Observation mode	POINTING	POINTING	On-chip summing requested	N	N
[deg] Pointing RA	287.757957	287.7460236071134	Subarray requested	CUSTOM	1/8
[deg] Pointing Dec	0.613817	0.5893280850224571	Subarray start row	150	150
[deg] Pointing Roll	213.041233	213.1980178782805	Subarray row count	128	128
[mm] SIM focus pos	-0.684267	-0.6828225247311905	Alternating exposures requested	N	N
[mm] SIM defocus	0	0.001444936568705701	[s] Primary exposure time	0.000000	0.4
[mm] SIM translation stage pos	-190.132523	-190.1400660498719			
[mm] SIM translation stage offset	0	0.00754346686406393			
[s] Observation start time (MET)	143758939.184000	143757910.08653			
Observation start date	2002-07-22T21:01:15	2002-07-22T20:45:10			
[s] Observation end time (MET)	143765939.184000	143767408.76192			
Observation end date	2002-07-22T22:57:55	2002-07-22T23:23:28			
Read mode	TIMED	TIMED			

2.3 Aspect



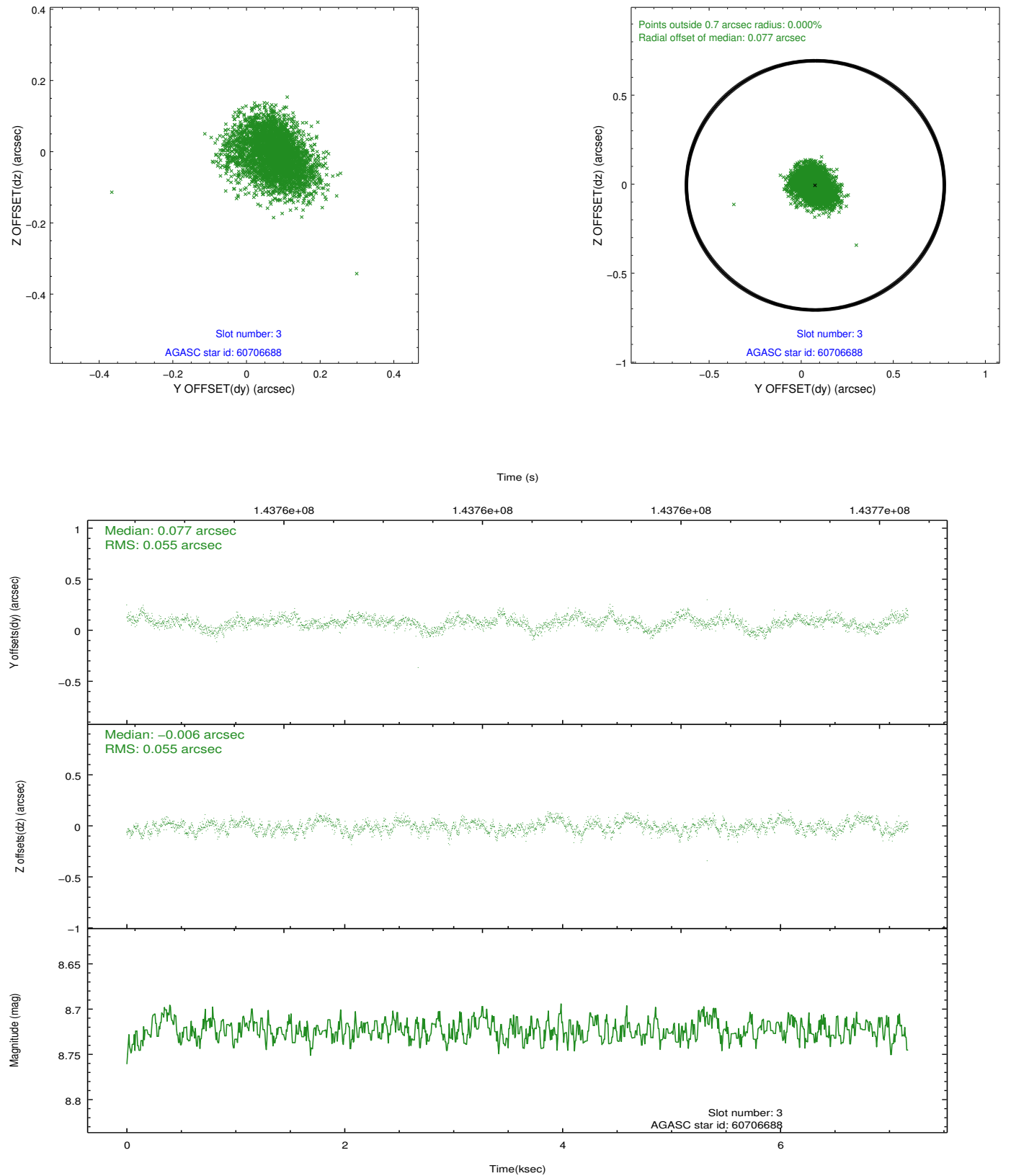


Slot Statistics

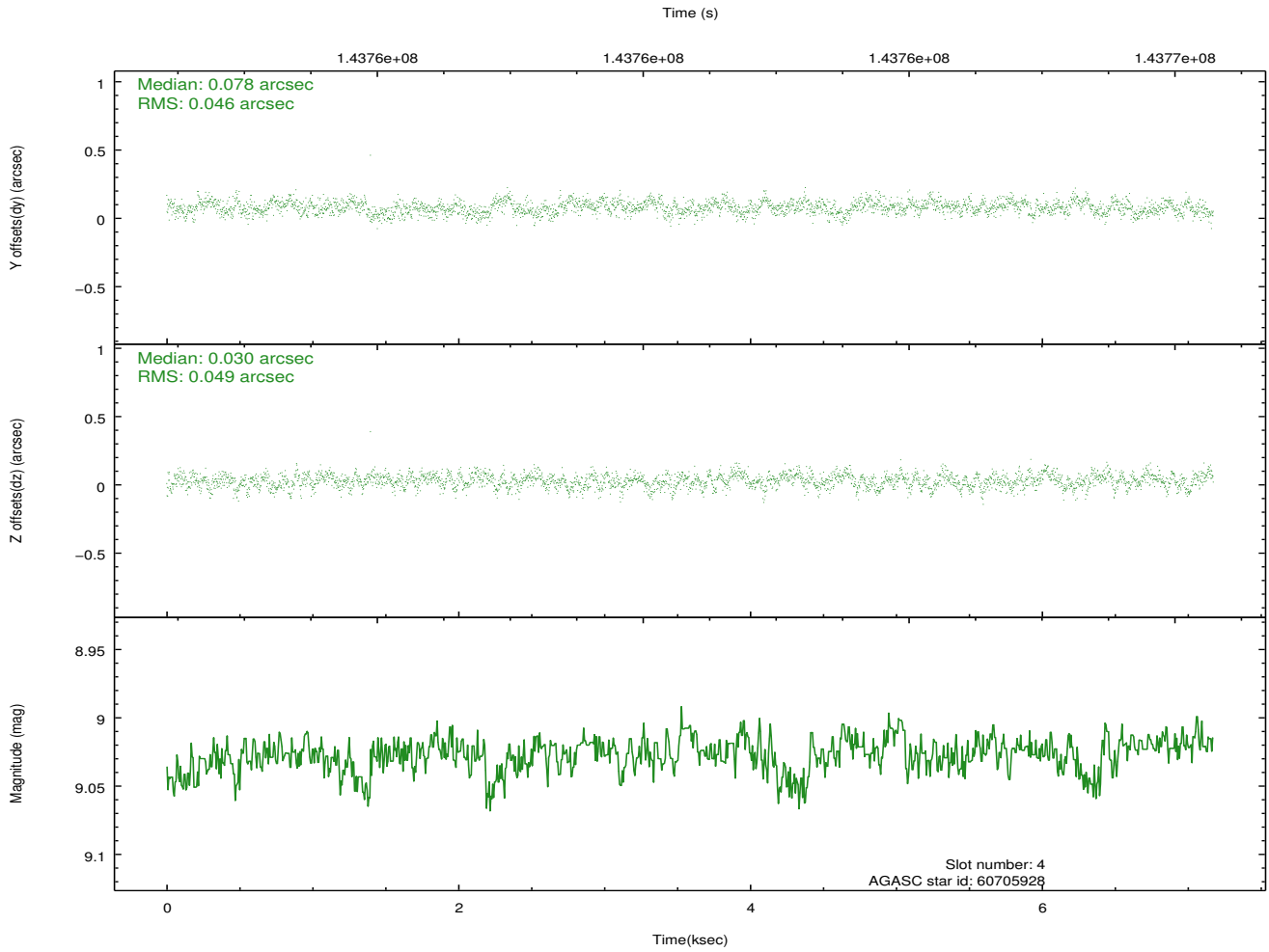
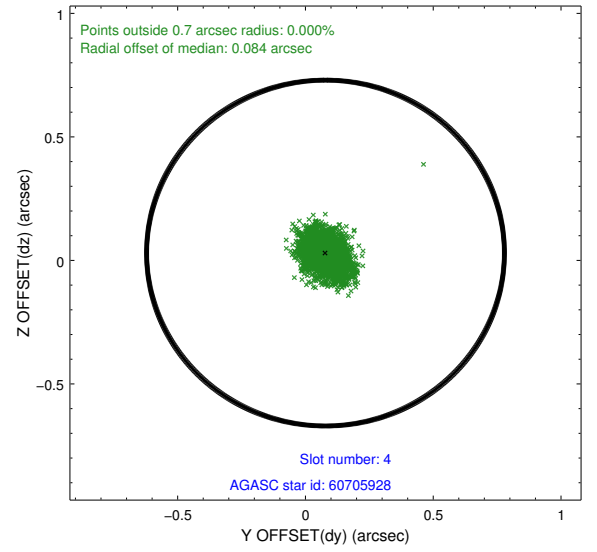
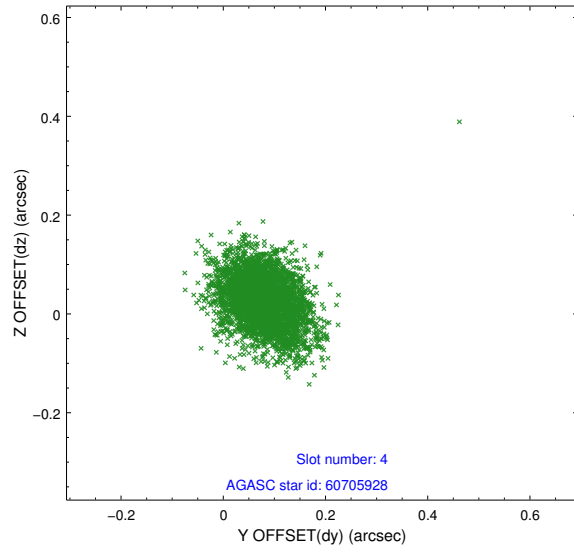
slot	status	id	mag	n_pts	med_dy	med_dz	dr1	dr2	ra	dec	mean_y	mean_z
0	FID	ACIS-S-2	7.11	1750	-0.012	0.018	0.010	0.018	0.000000	0.000000	-755.27	-1728.15
1	FID	ACIS-S-4	7.20	1750	-0.033	0.002	0.010	0.020	0.000000	0.000000	2157.63	179.48
2	FID	ACIS-S-5	7.24	1750	0.014	-0.011	0.011	0.019	0.000000	0.000000	-1807.05	174.06
3	GUIDE	60706688	8.72	3500	0.077	-0.006	0.083	0.134	287.637938	0.689635	213.95	-465.06
4	GUIDE	60705928	9.03	3499	0.078	0.030	0.070	0.118	287.833535	0.715711	-427.41	-159.98
5	GUIDE	60694136	9.01	3499	-0.118	-0.005	0.098	0.153	287.735532	1.421294	-1516.95	-2481.77
6	GUIDE	60708936	9.18	3489	0.045	-0.076	0.085	0.137	287.407925	0.924863	445.82	-1627.16
7	GUIDE	672281216	9.32	3493	-0.077	0.050	0.085	0.136	287.454836	-0.067927	2253.48	1461.40

2.4 Star Slots

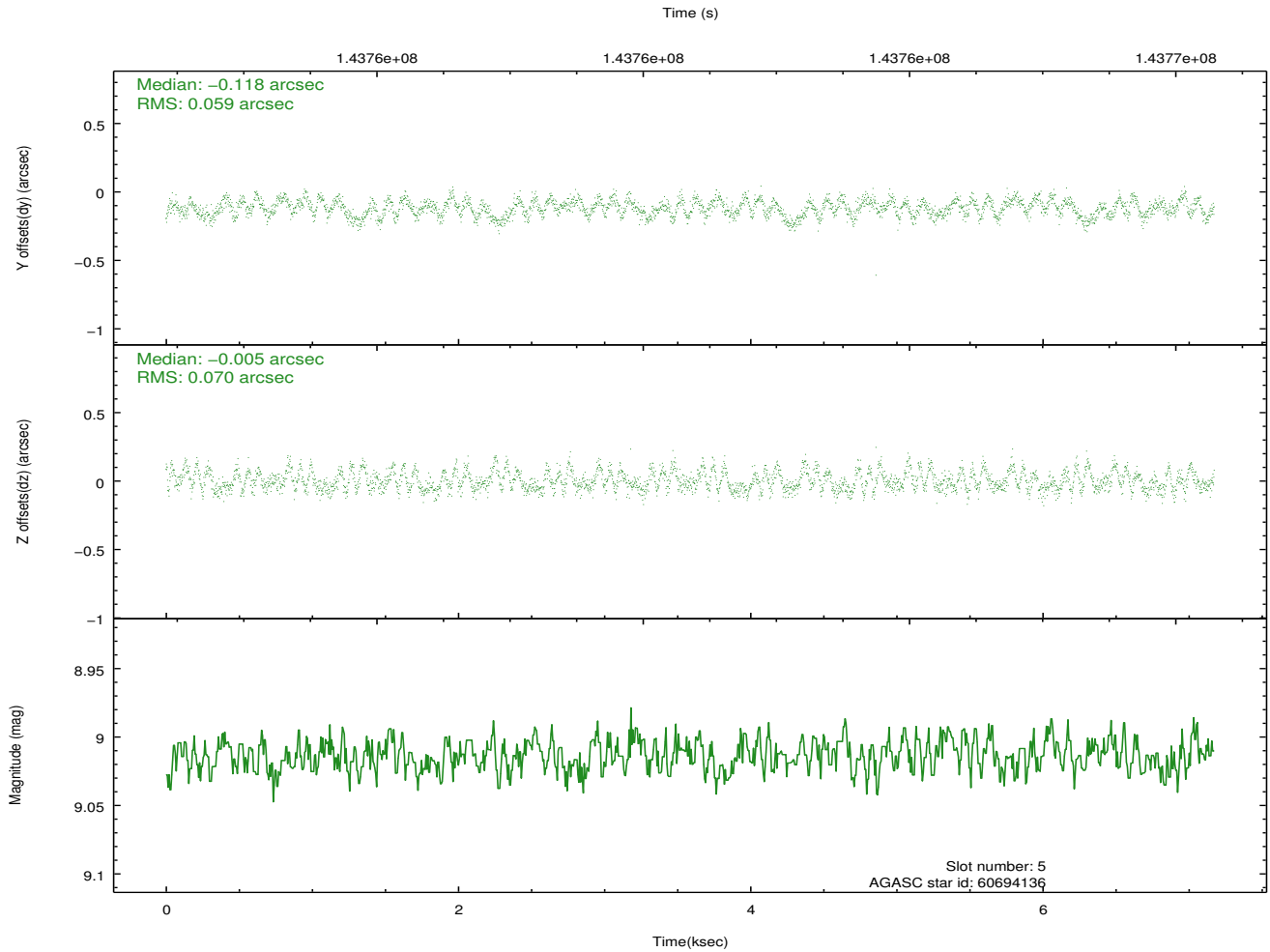
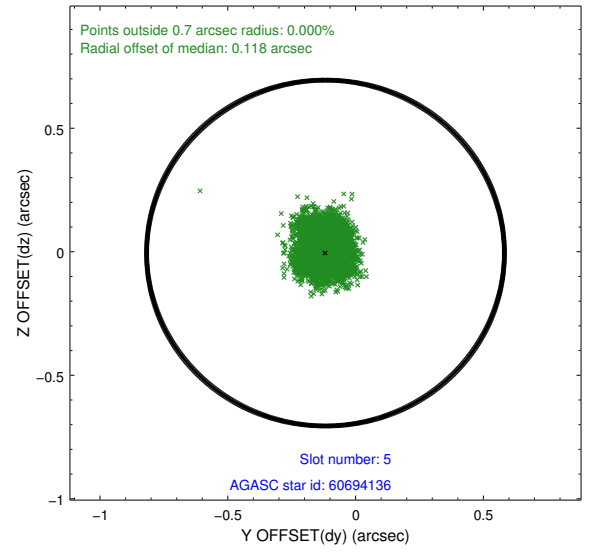
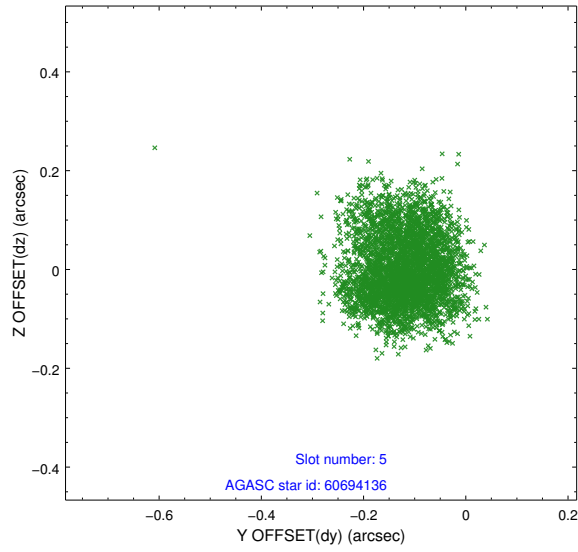
2.4.1 Slot 3



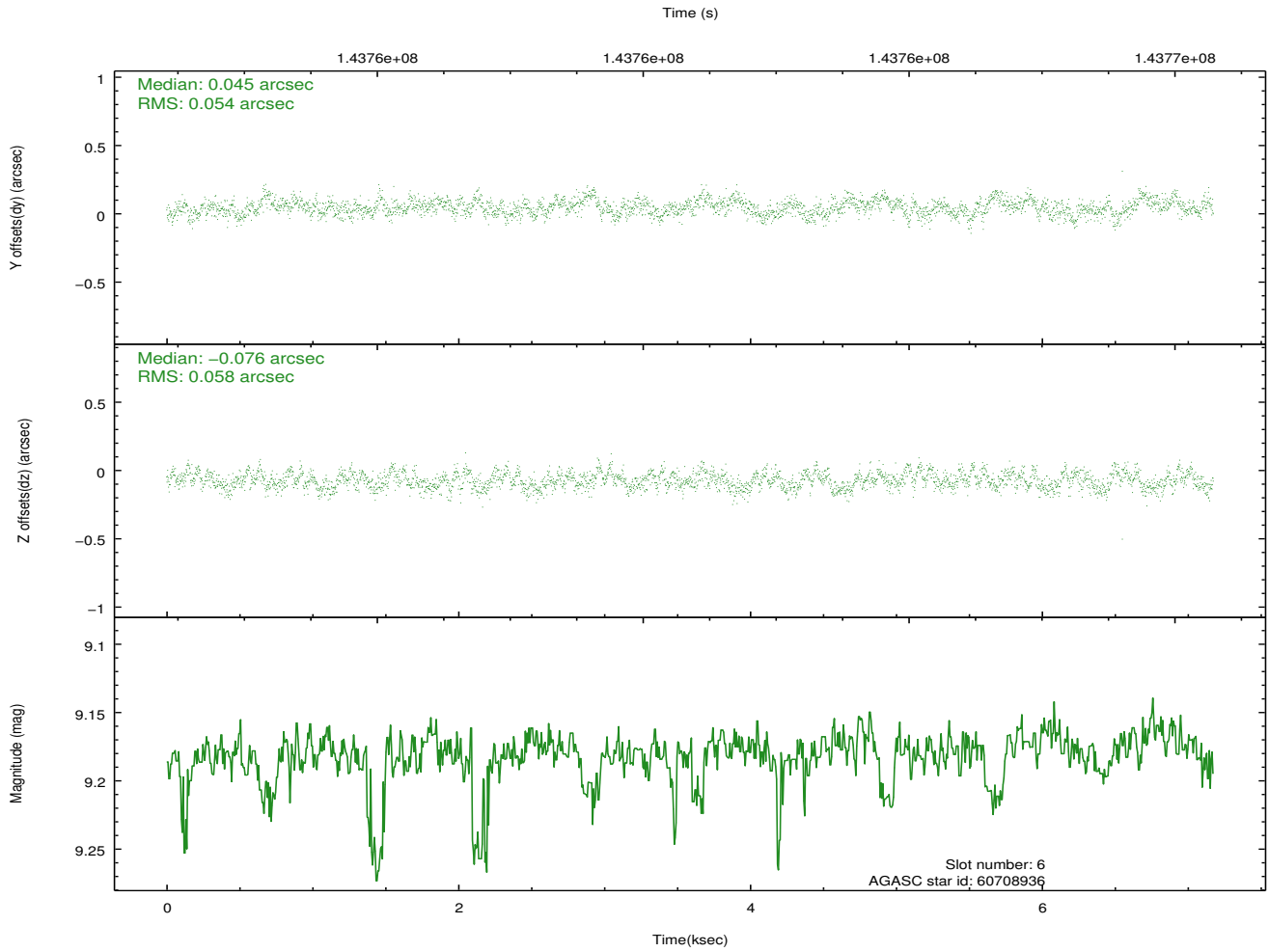
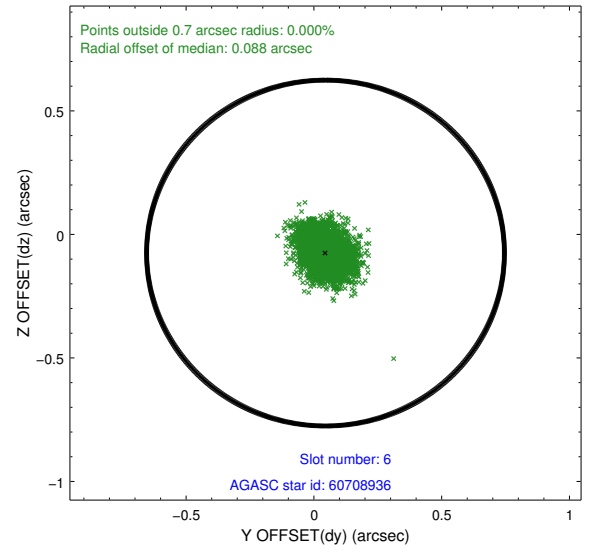
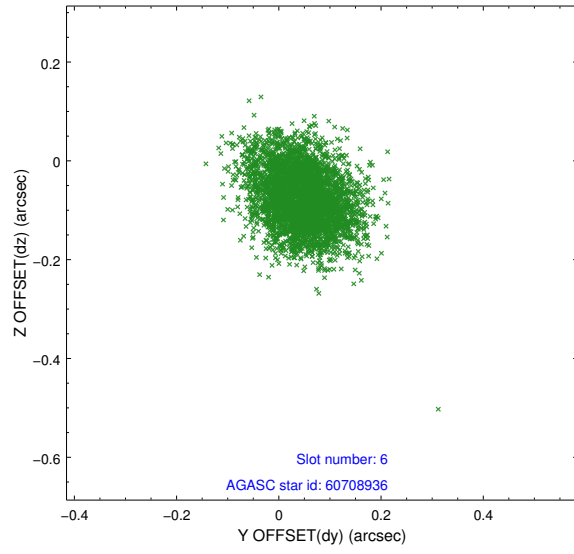
2.4.2 Slot 4



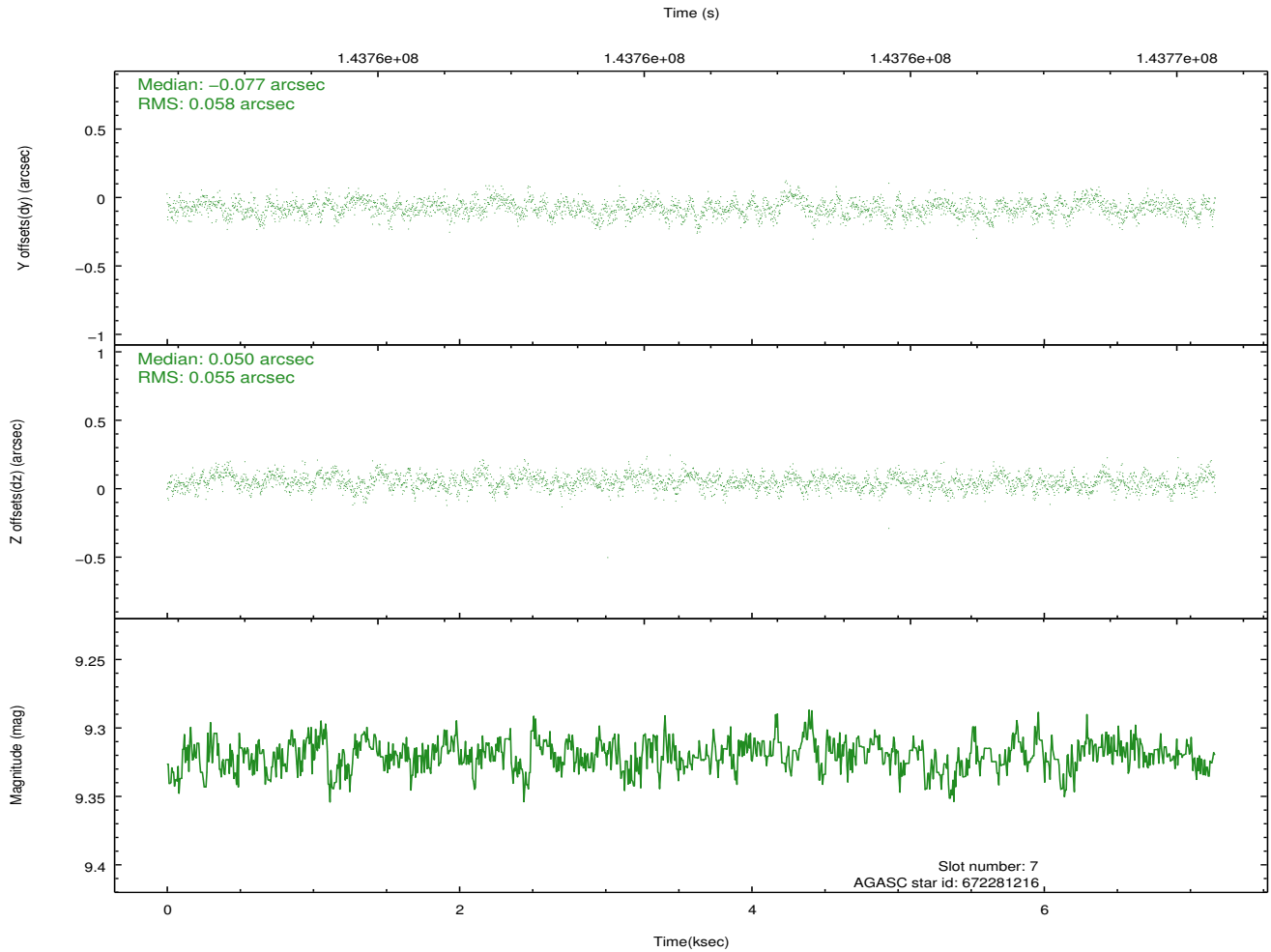
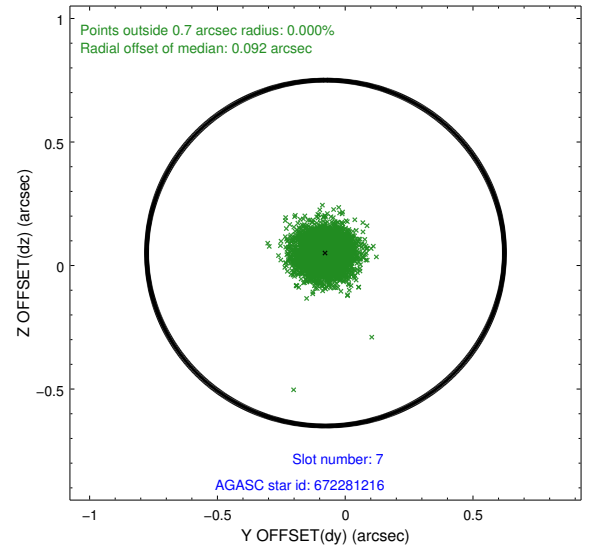
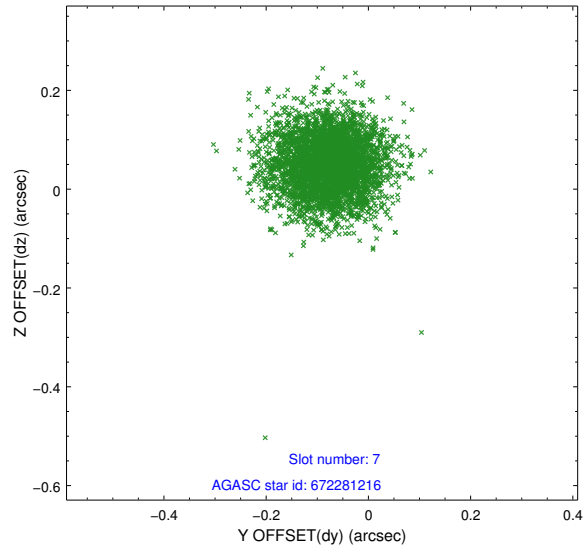
2.4.3 Slot 5



2.4.4 Slot 6

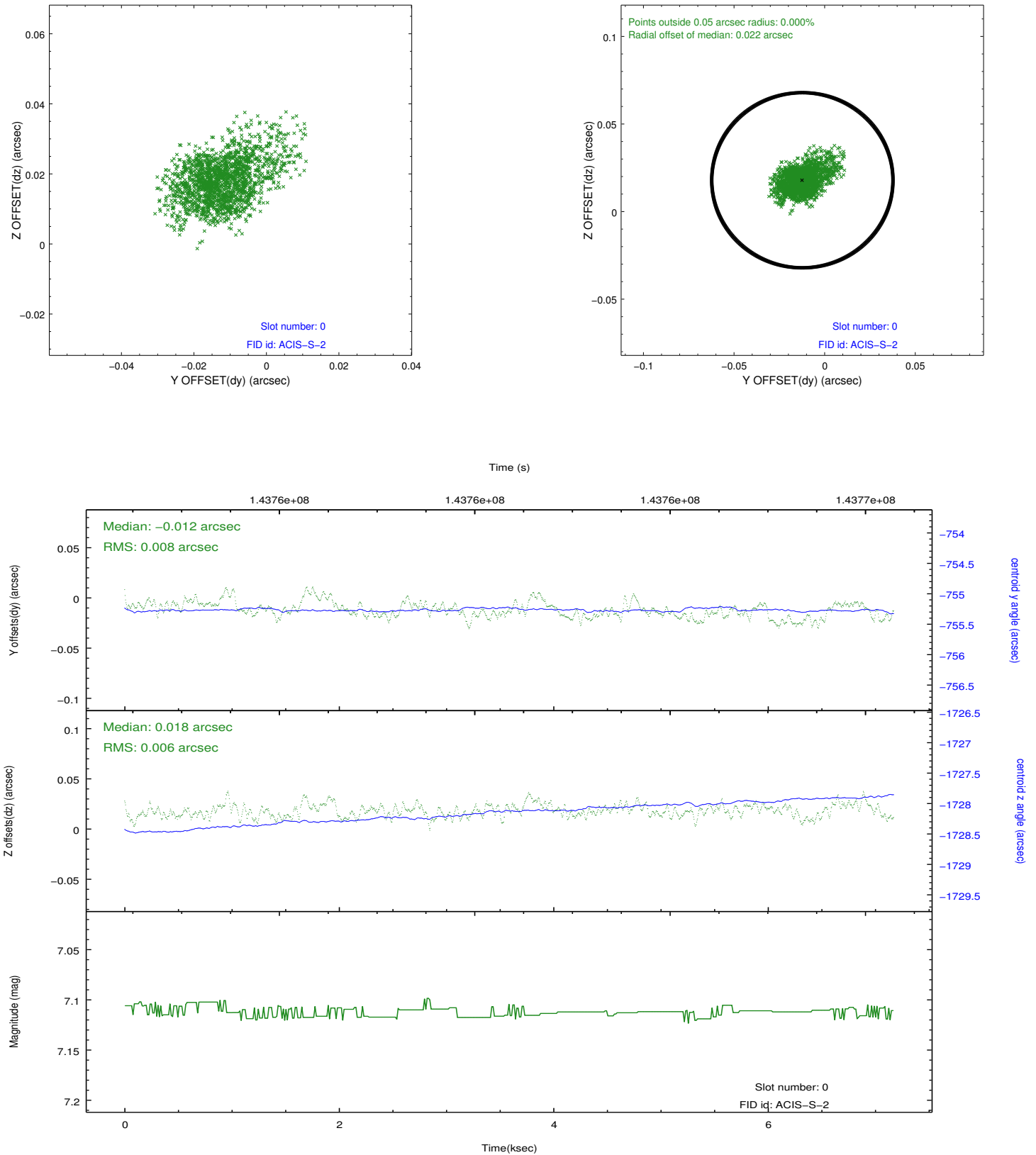


2.4.5 Slot 7

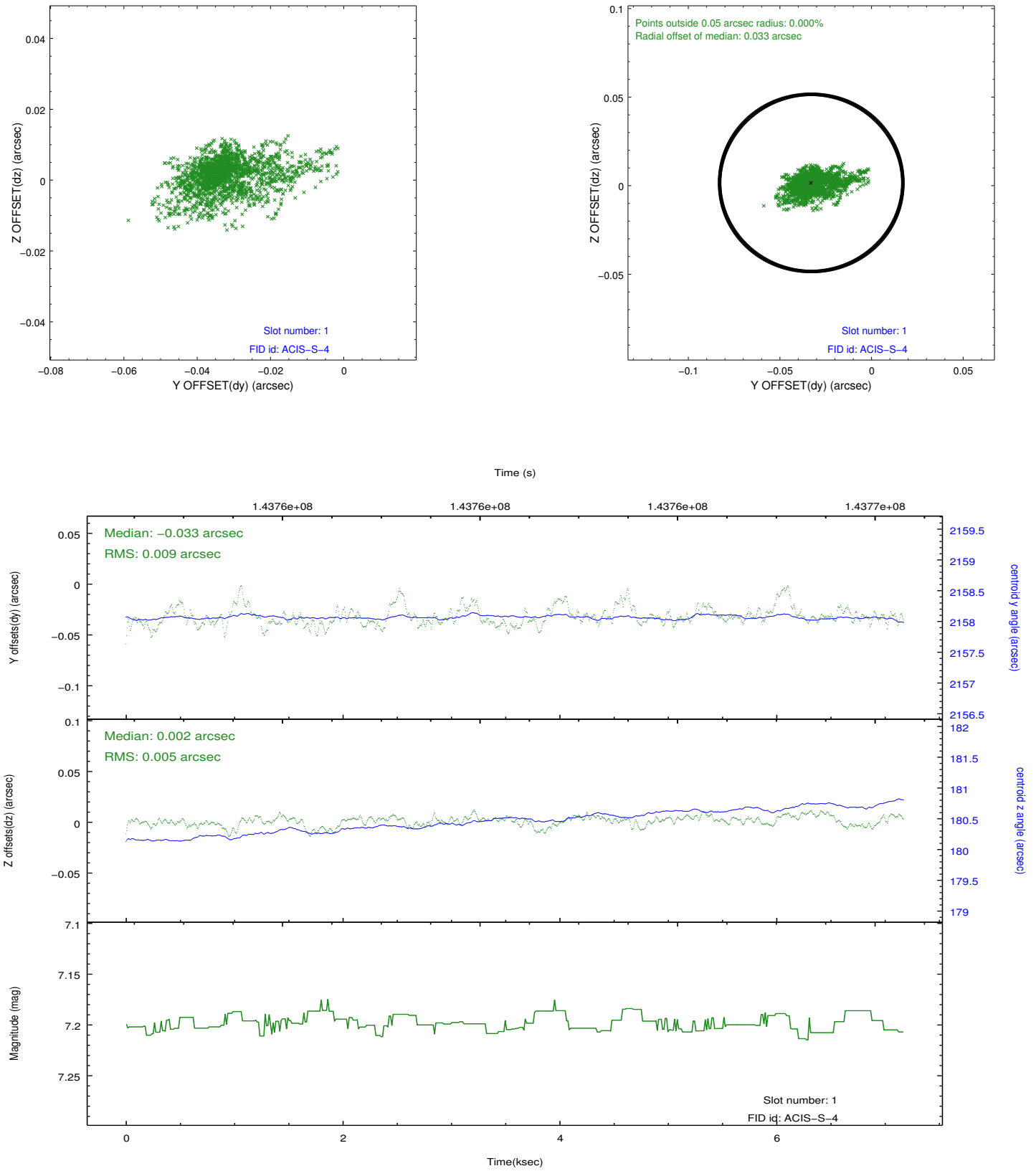


2.5 FID Slots

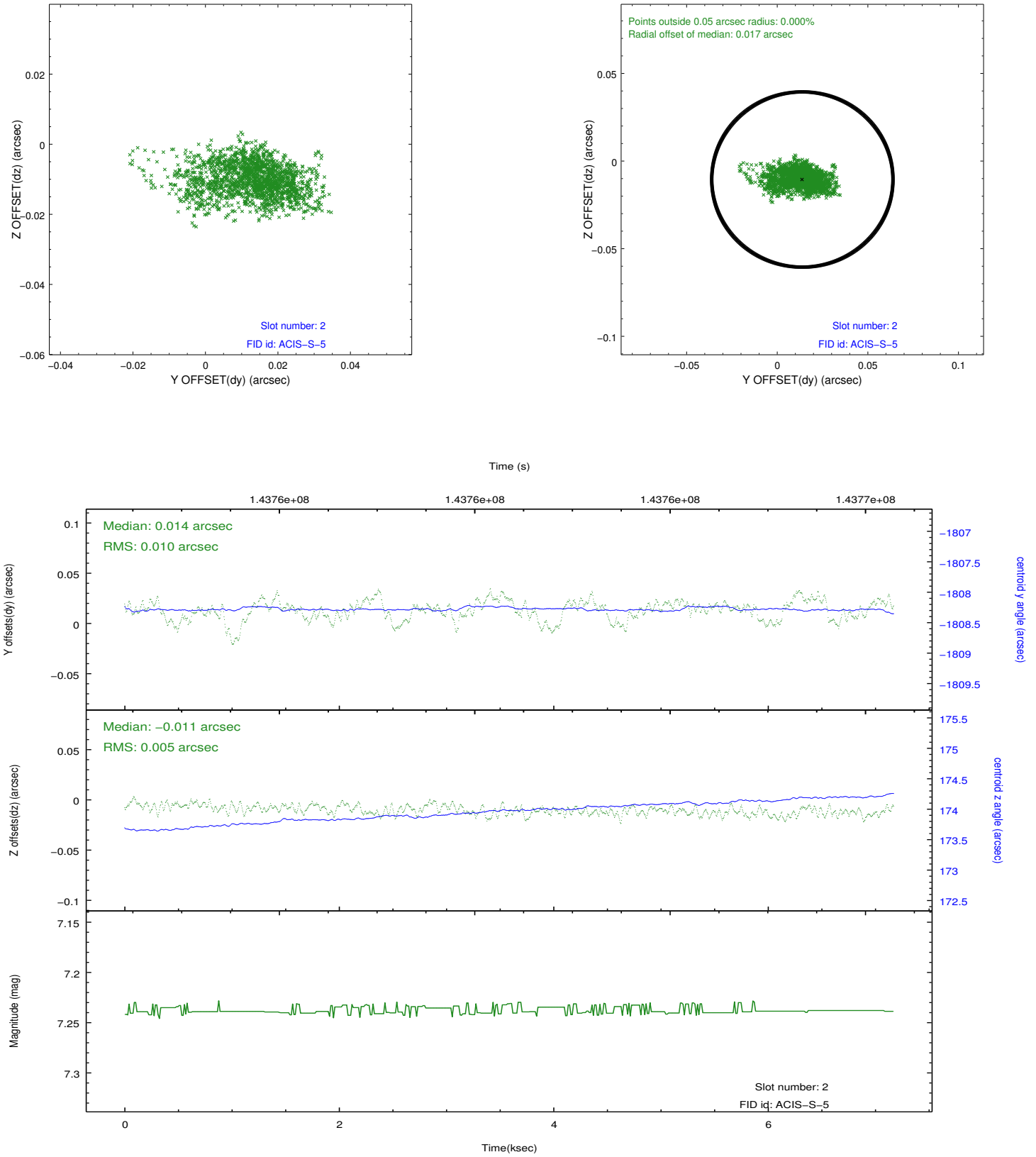
2.5.1 Slot 0



2.5.2 Slot 1



2.5.3 Slot 2



A Summary

A.1 Status

V&V Scientist	Beth Sundheim
V&V Date (YYYY-MM-DD)	2012.10.21
V&V Edition	1
V&V Disposition and Status	OK
V&V Charge Time	7.172

A.2 Comments