

# V&V Reference Report

## L2 ASCDS Version : 7.6.9

Observation 3486 - L2 Version 001  
Chandra X-Ray Center

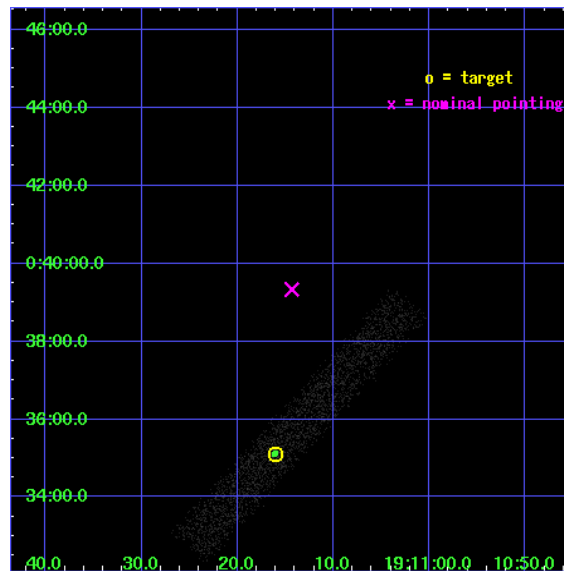
L2 Processing Date : Sep 19 2006

## Contents

<b>1</b>	<b>Front</b>	<b>2</b>
<b>2</b>	<b>OBI</b>	<b>3</b>
2.1	OBI . . . . .	3
2.1.1	Images . . . . .	3
2.1.2	Bias . . . . .	3
2.1.3	Parameters . . . . .	4
2.1.4	Events . . . . .	4
2.2	Compared Parameters . . . . .	5
2.3	Aspect . . . . .	6
2.4	Star Slots . . . . .	9
2.4.1	Slot 3 . . . . .	9
2.4.2	Slot 4 . . . . .	10
2.4.3	Slot 5 . . . . .	11
2.4.4	Slot 6 . . . . .	12
2.4.5	Slot 7 . . . . .	13
2.5	FID Slots . . . . .	14
2.5.1	Slot 0 . . . . .	14
2.5.2	Slot 1 . . . . .	15
2.5.3	Slot 2 . . . . .	16
<b>3</b>	<b>Point Sources</b>	<b>17</b>
<b>A</b>	<b>Summary</b>	<b>18</b>
A.1	Status . . . . .	18
A.2	Comments . . . . .	18

# 1 Front

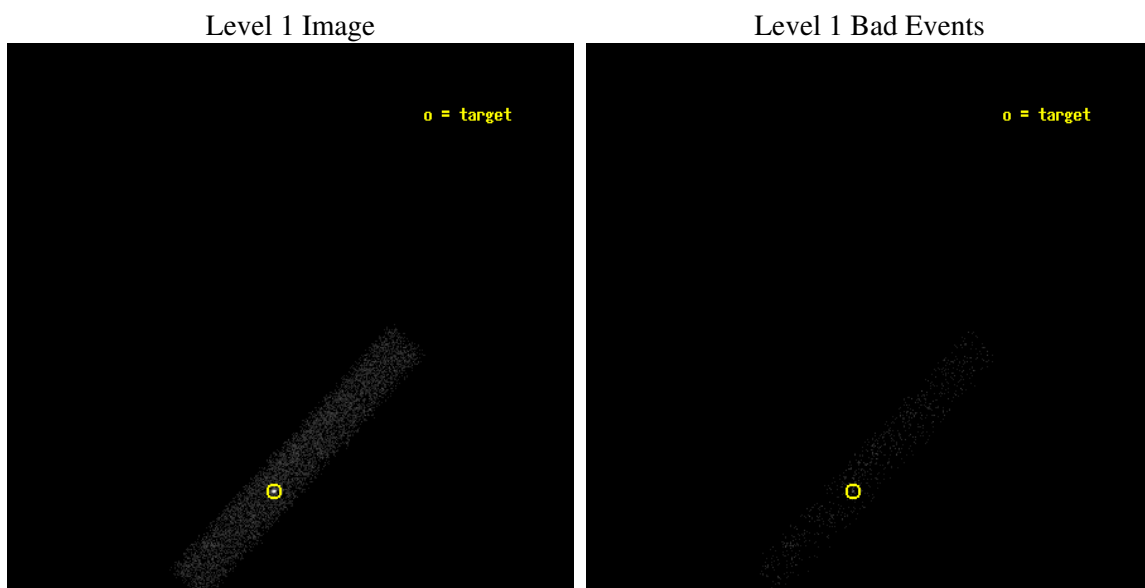
seq_num	400252
obs_id	3486
title	VARIABLE THERMAL EMISSION AND FEATURE FROM AQL X-1 IN QUIESCENCE
observer	Prof. Robert Rutledge
object	AQL X-1
dtcycle	0
cycle	P
ra_targ	287.816667
dec_targ	0.585
ra_nom	287.80974302077
dec_nom	0.65541466712472
roll_nom	132.32038194339
revision	2
ontime	7151.1590864658
livetime	6485.7238222981
ontime7	7151.1590864658
l2events	5657



## 2 OBI

### 2.1 OBI

#### 2.1.1 Images



#### 2.1.2 Bias

Chip 7



### 2.1.3 Parameters

obi_num	0
ascdsver	7.6.9
caldbver	3.2.3
date	2006-09-19T09:12:44
revision	2

sched_exp_time	7000.000000
ontime	8182.0864544809
ontime7	8182.0864544809
l1events	11266

### 2.1.4 Events

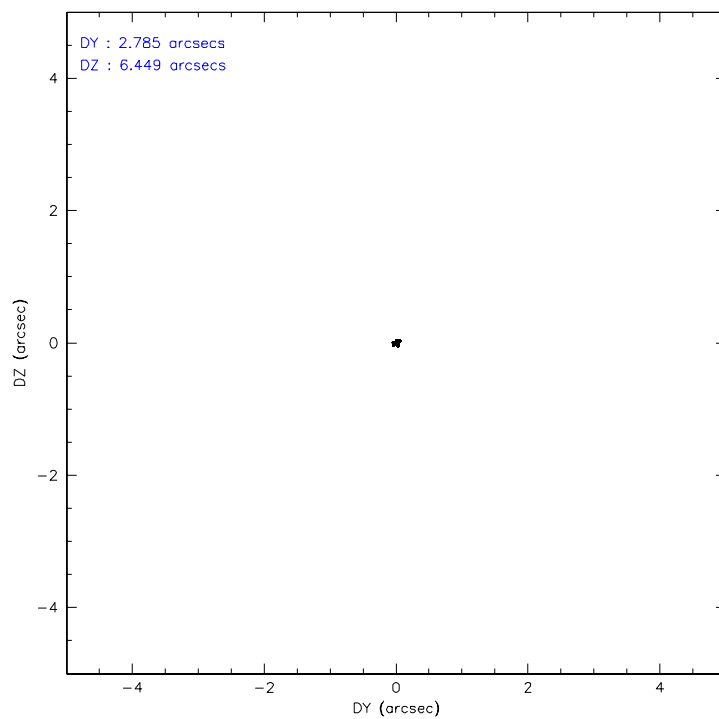
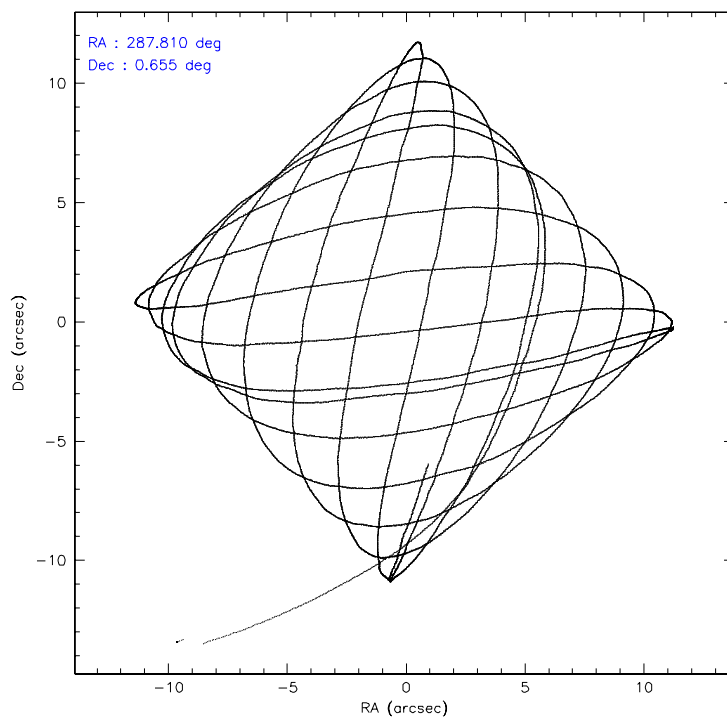
	<b>ccd 7</b>
level 1 events	11266
rejected events	5512
rejected %	48%

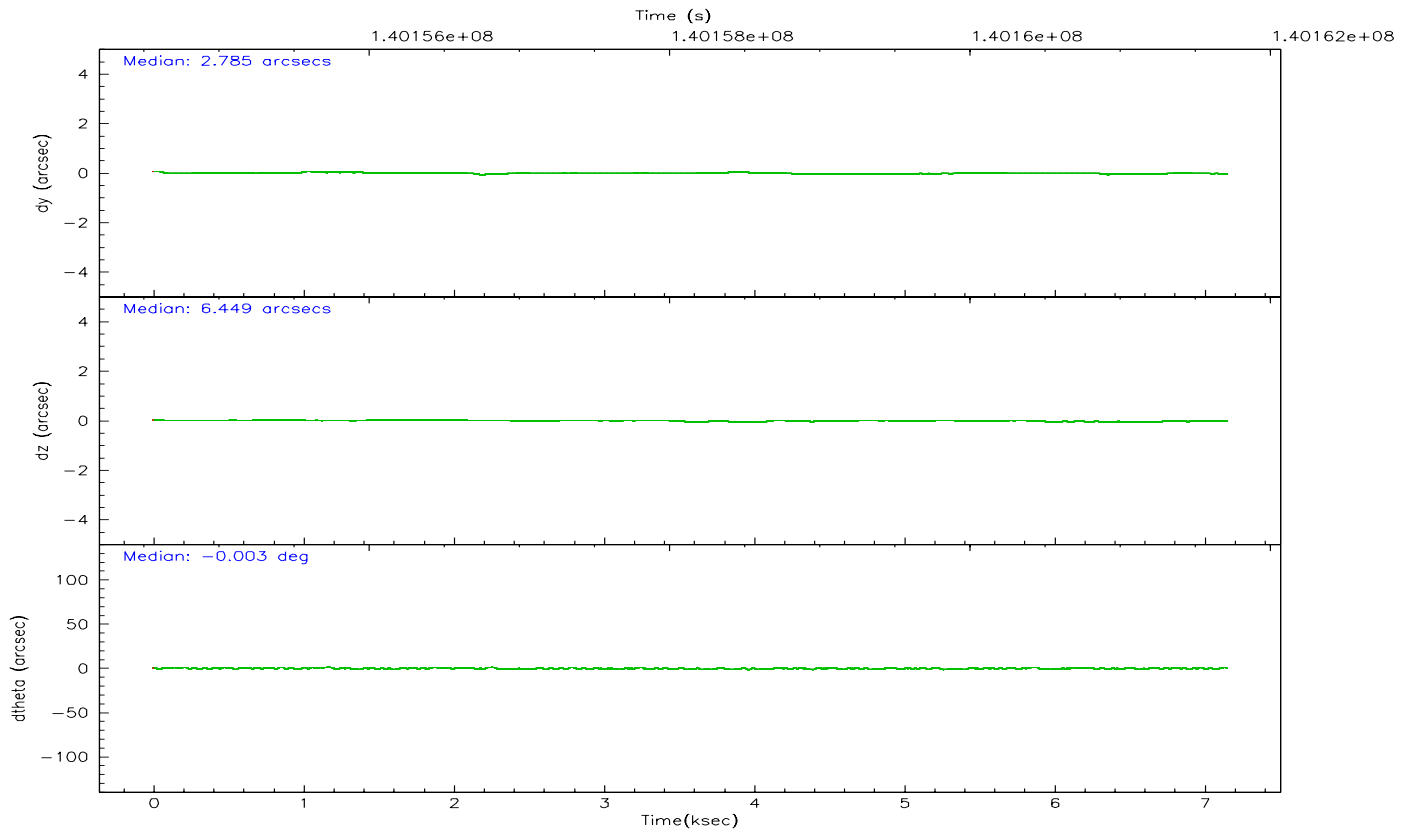
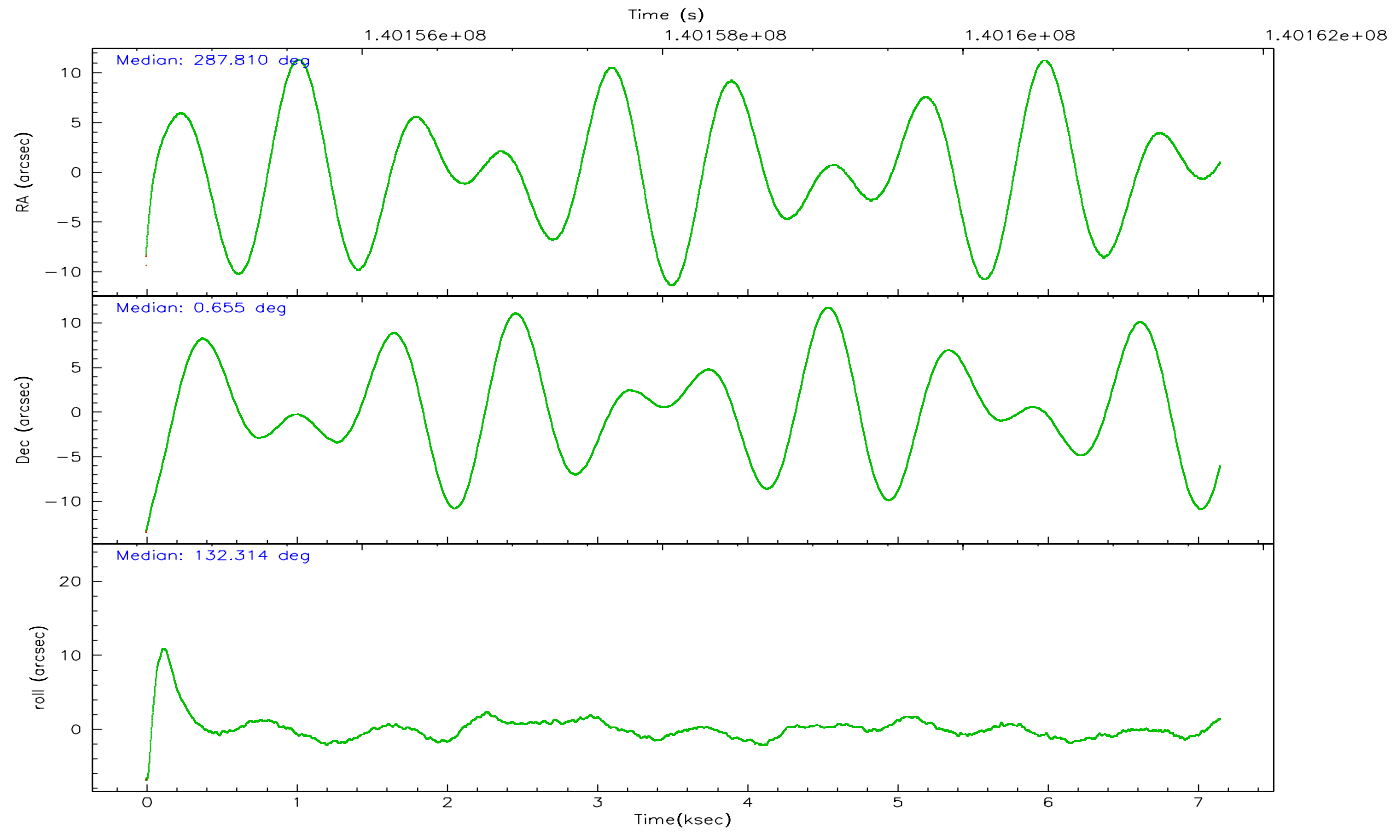
	<b>ccd 7</b>
grade 0 events	930
	8%
grade 1 events	15
	0%
grade 2 events	1413
	12%
grade 3 events	727
	6%
grade 4 events	699
	6%
grade 5 events	660
	5%
grade 6 events	2481
	22%
grade 7 events	4341
	38%

## 2.2 Compared Parameters

Parameter	Planned	Actual	Parameter	Planned	Actual
Instrument	ACIS	ACIS	Obspar format version number	6	6
Detector	ACIS-7	ACIS-7	Obspar file type	PREDICTED	ACTUAL
Grating	NONE	NONE	Obspar update status	NONE	UPDATED
Data mode	FAINT	FAINT	Number of optional ACIS chips dropped	0	0
Observation mode	POINTING	POINTING	On-chip summing requested	N	N
Pointing RA	287.835813	287.8097430207671	Subarray requested	CUSTOM	1/8
Pointing Dec	0.647541	0.6554146671247172	Subarray start row	150	150
Pointing Roll	132.163486	132.320381943385	Subarray row count	128	128
SIM focus pos (mm)	-0.684267	-0.6828225247311905	Alternating exposures requested	N	N
SIM defocus (mm)	0	0.001444936568705701	Primary exposure time	0.000000	0.4
SIM translation stage pos (mm)	-190.132523	-190.1425803651734			
SIM translation stage offset (mm)	0	0.01005778216563158			
Observation start time	140154707.184000	140153525.62623			
Observation start date	2002-06-11T03:50:43	2002-06-11T03:32:05			
Observation end time	140161707.184000	140162590.7266			
Observation end date	2002-06-11T05:47:23	2002-06-11T06:03:10			
Read mode	TIMED	TIMED			

## 2.3 Aspect





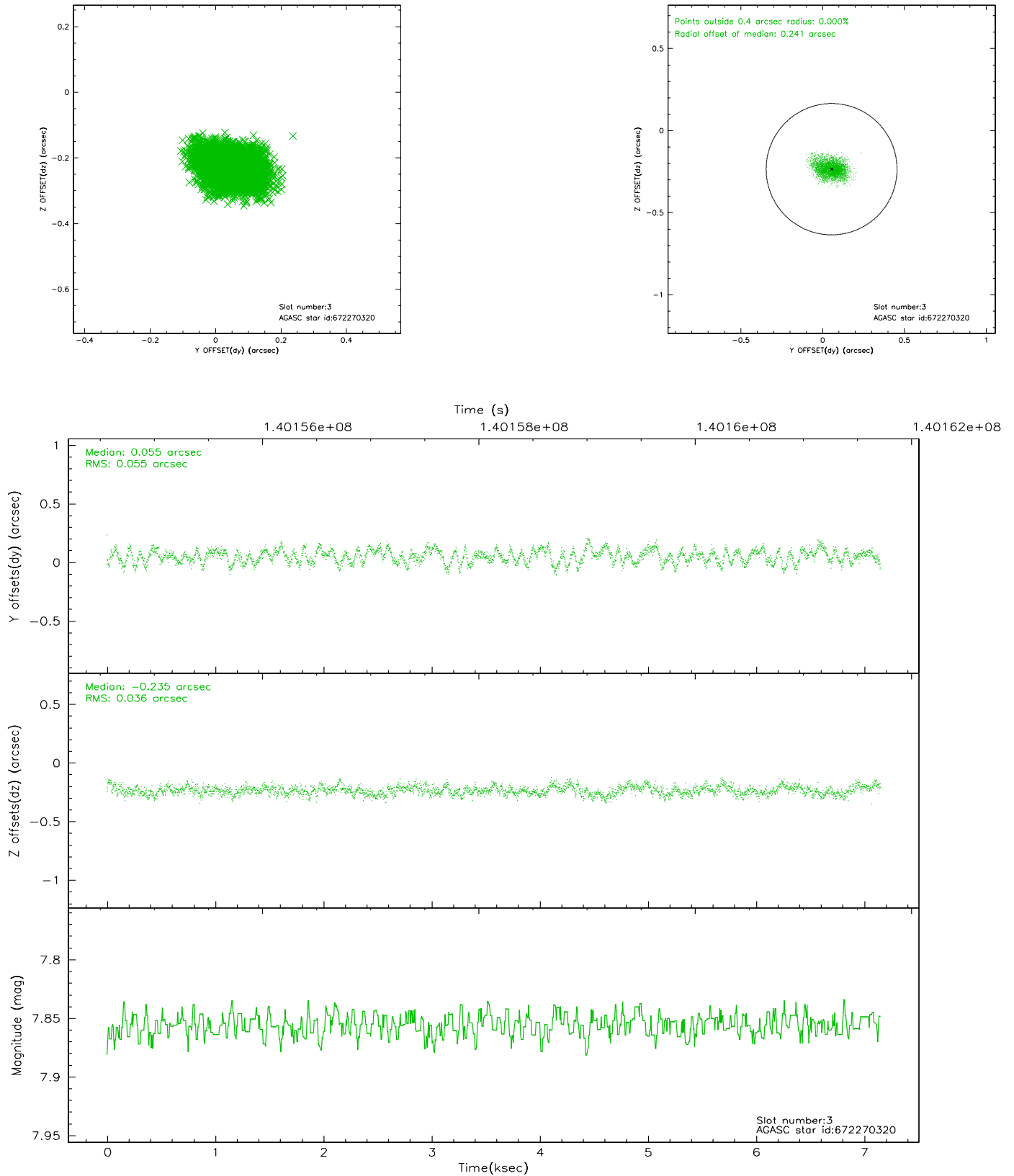
### Slot Statistics

slot	status	id	mag	n_pts	med_dy	med_dz	dr1	dr2	ra	dec	mean_y	mean_z
0	FID	ACIS-S-3	7.36	1745	-0.077	-0.012	0.007	0.012	0.000000	0.000000	57.66	-1856.62
1	FID	ACIS-S-5	7.24	1744	0.079	-0.053	0.006	0.011	0.000000	0.000000	-1808.35	173.52
2	FID	ACIS-S-6	7.35	1744	-0.024	0.074	0.006	0.011	0.000000	0.000000	405.32	818.48
3	GUIDE	672270320	7.86	3489	0.055	-0.235	0.070	0.115	287.786086	-0.258303	-2297.24	2321.16
4	GUIDE	60700592	8.07	3489	0.042	-0.179	0.062	0.098	287.530354	0.932002	1496.61	128.17
5	GUIDE	60714072	8.93	3488	-0.060	0.137	0.099	0.157	288.094723	1.368496	1299.16	-2432.72
6	GUIDE	60694136	9.02	3487	-0.162	0.067	0.103	0.159	287.735532	1.421294	2307.62	-1602.76
7	GUIDE	60706104	9.33	3484	0.122	0.211	0.099	0.157	288.572310	0.711214	-1608.57	-2119.72

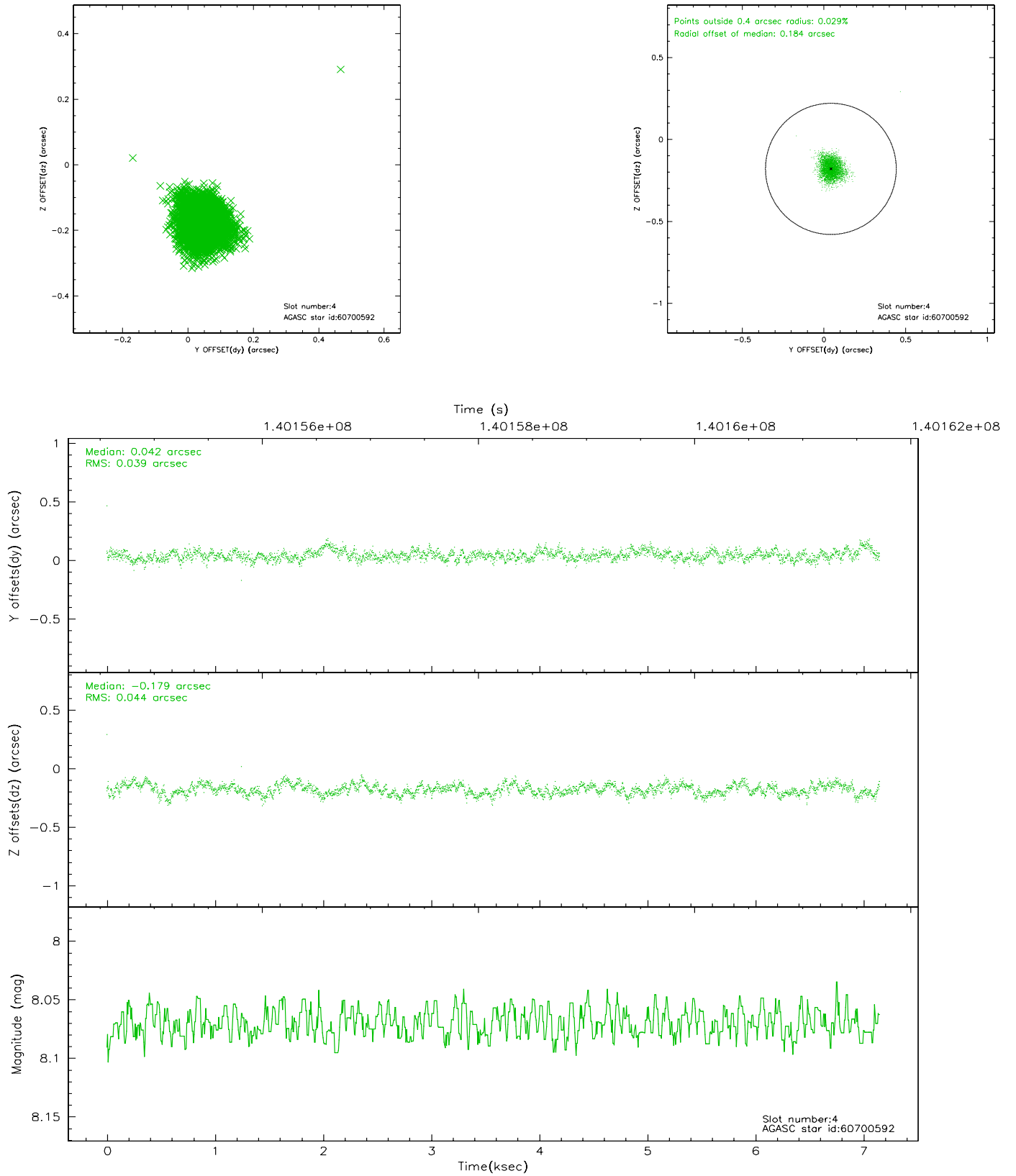


## 2.4 Star Slots

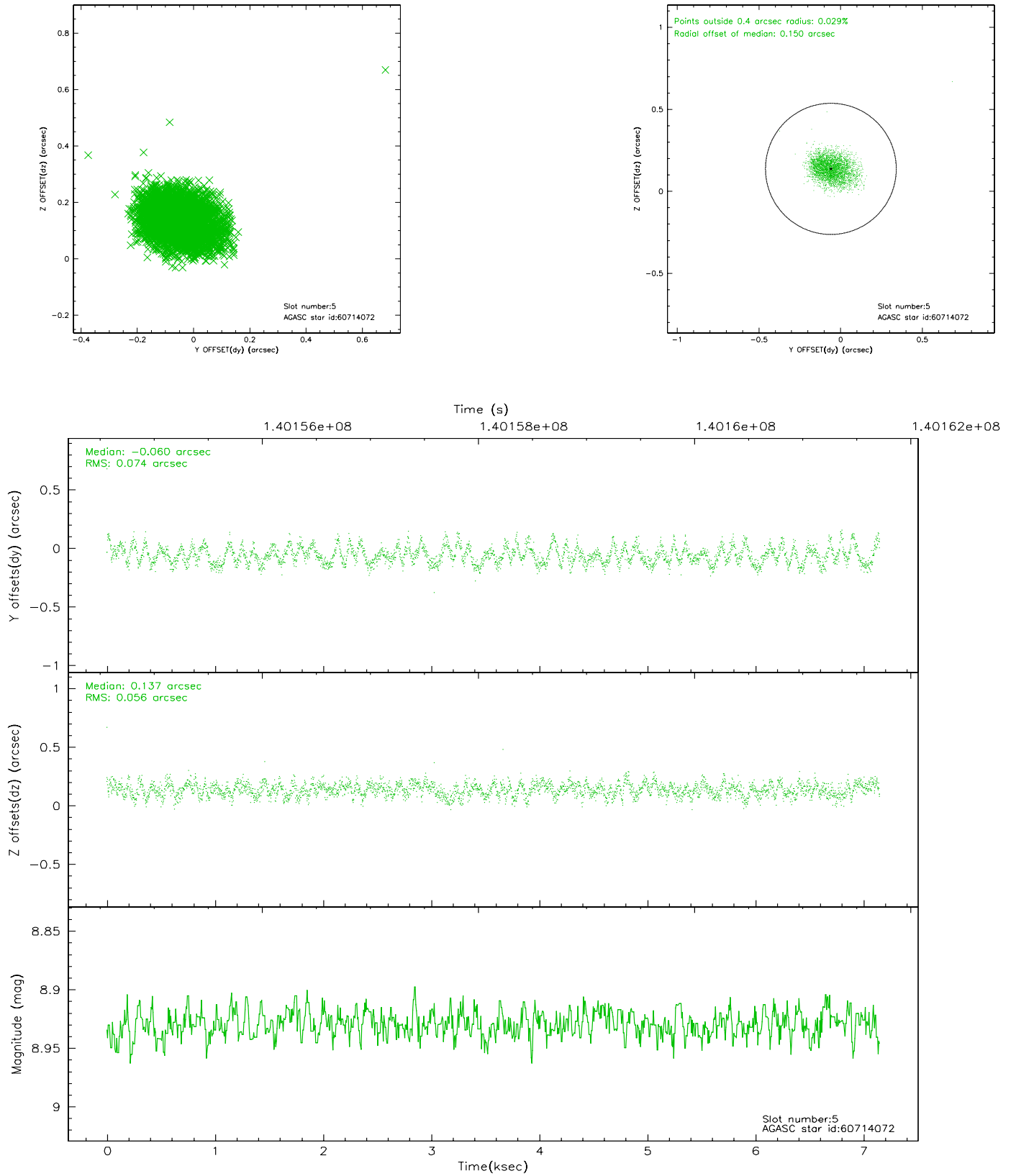
### 2.4.1 Slot 3



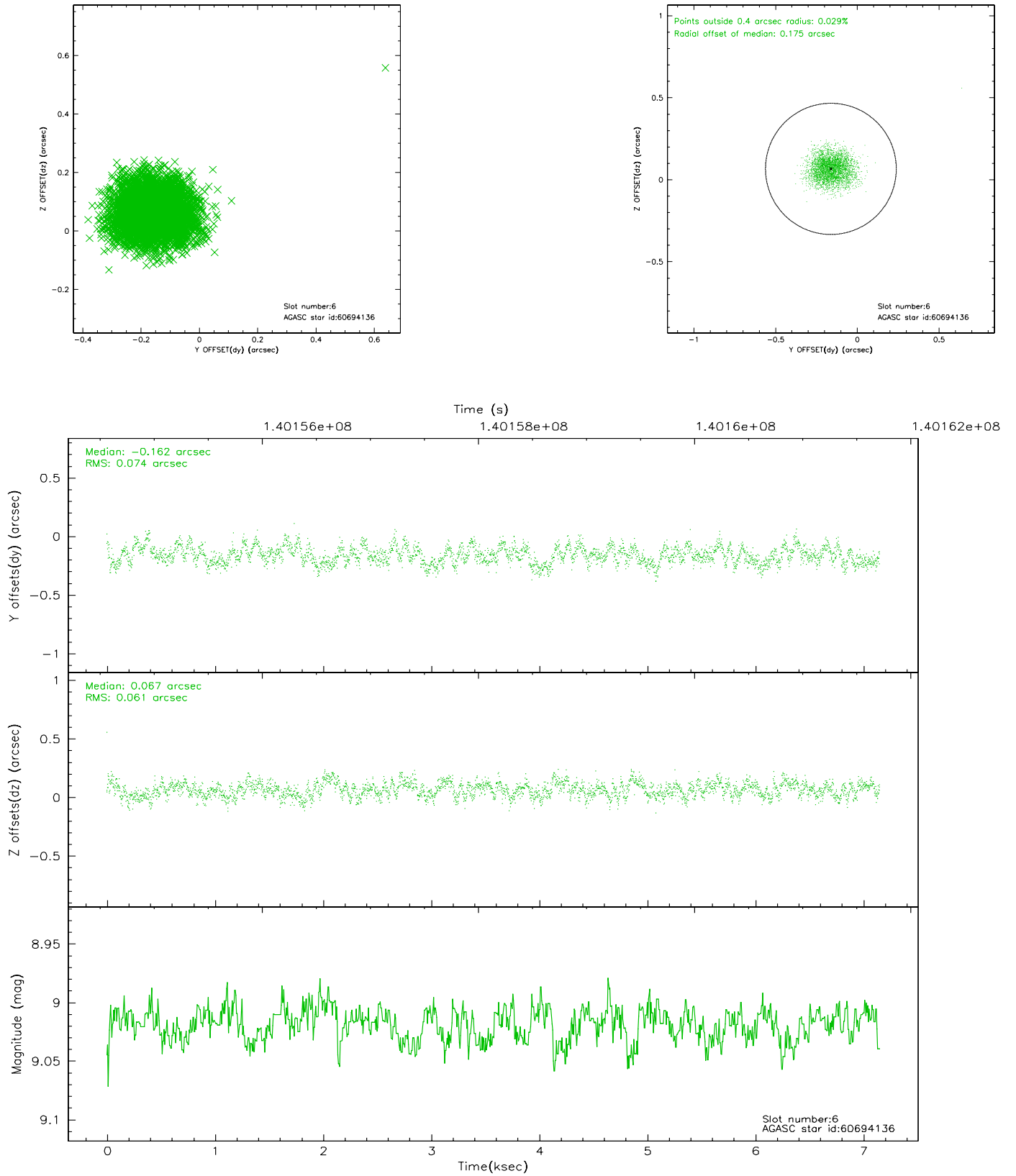
## 2.4.2 Slot 4



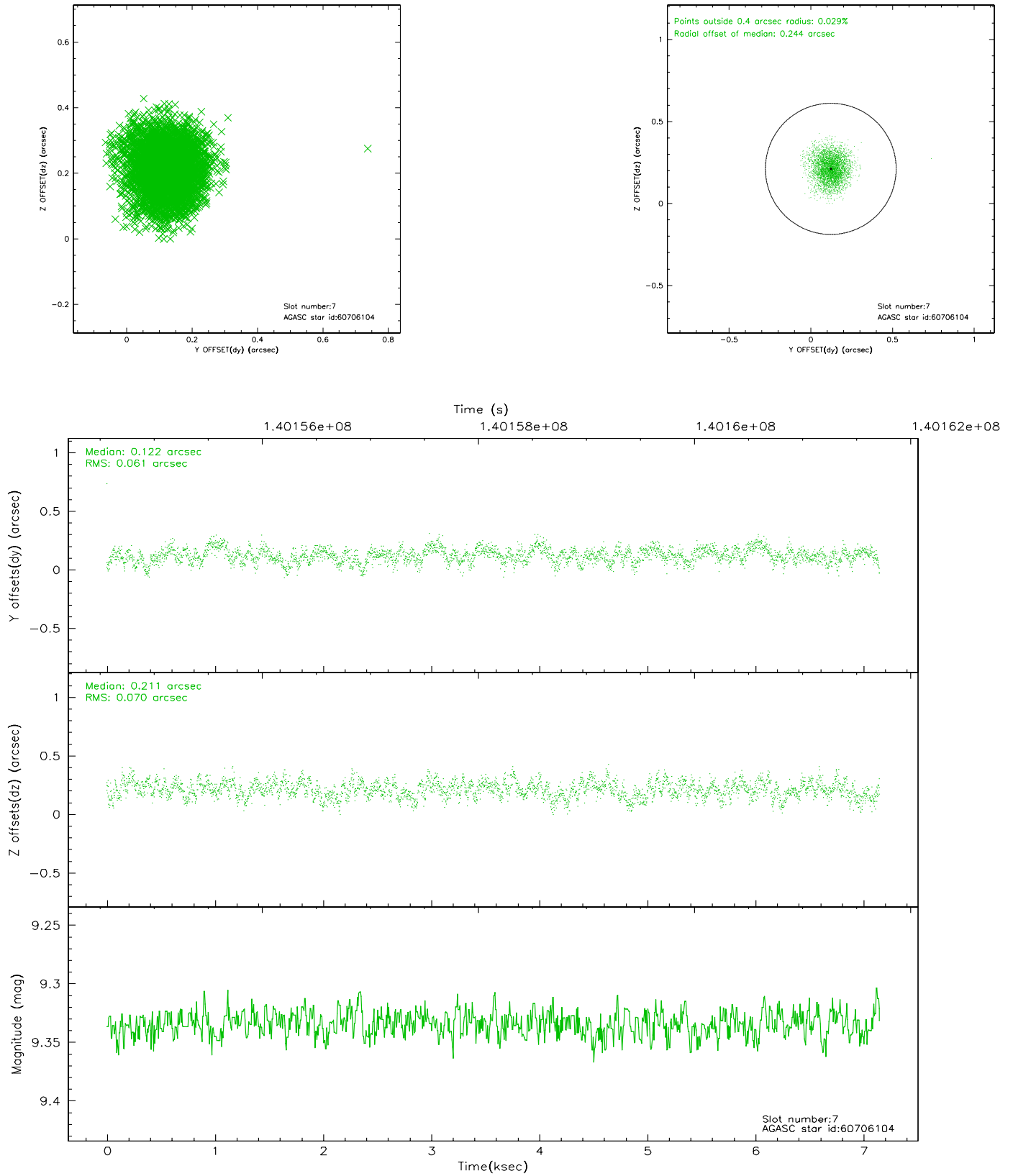
### 2.4.3 Slot 5



## 2.4.4 Slot 6

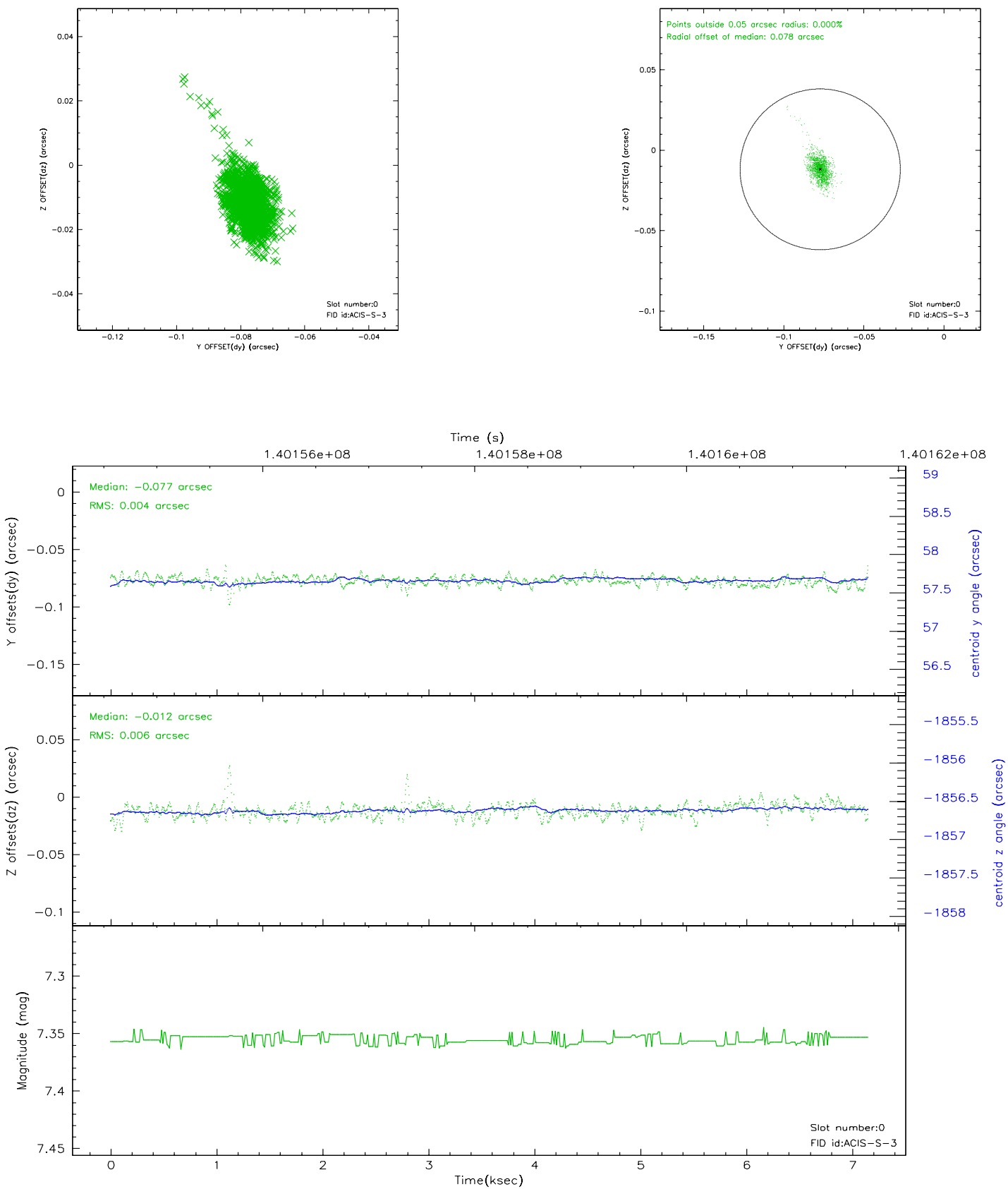


## 2.4.5 Slot 7

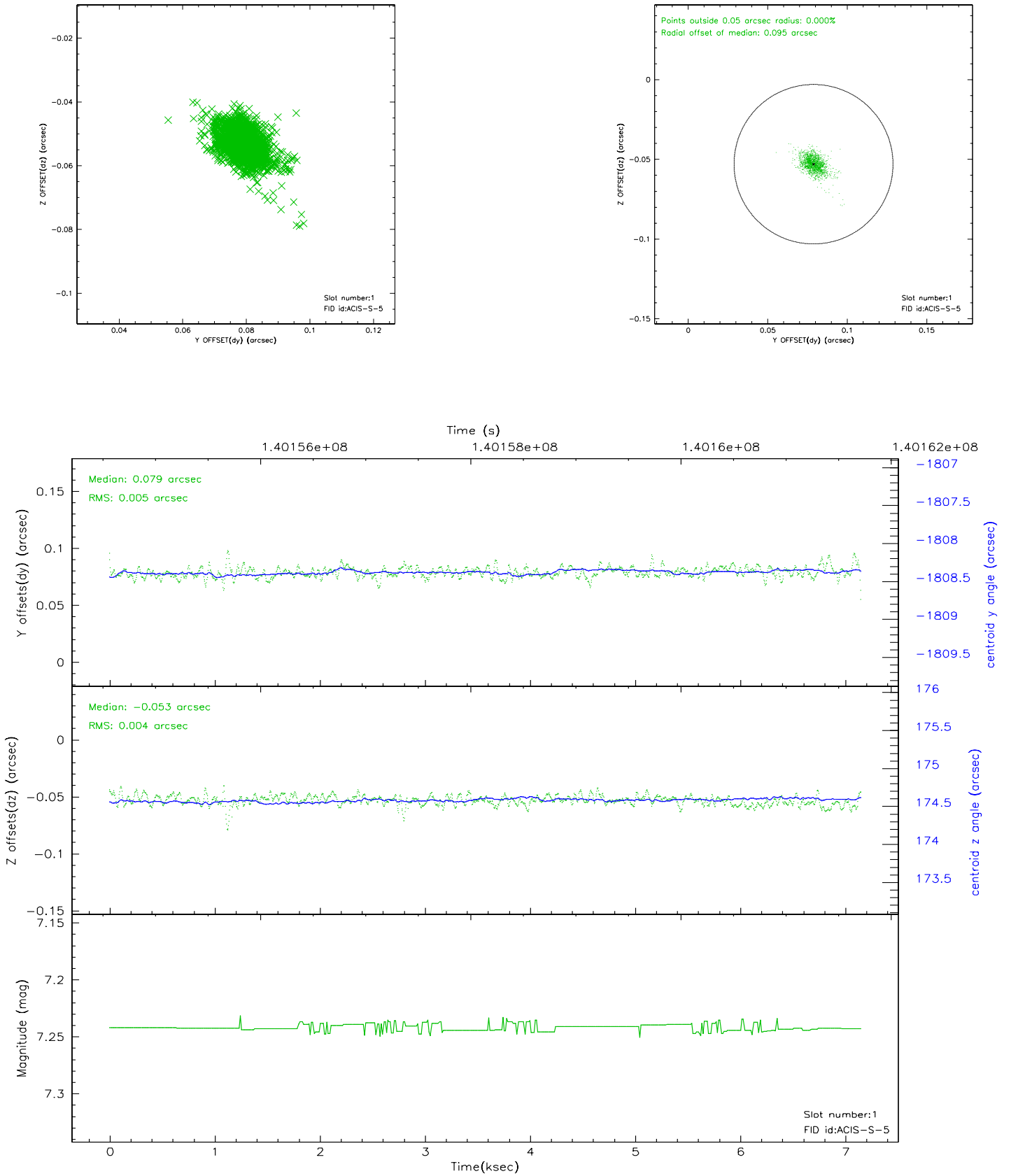


## 2.5 FID Slots

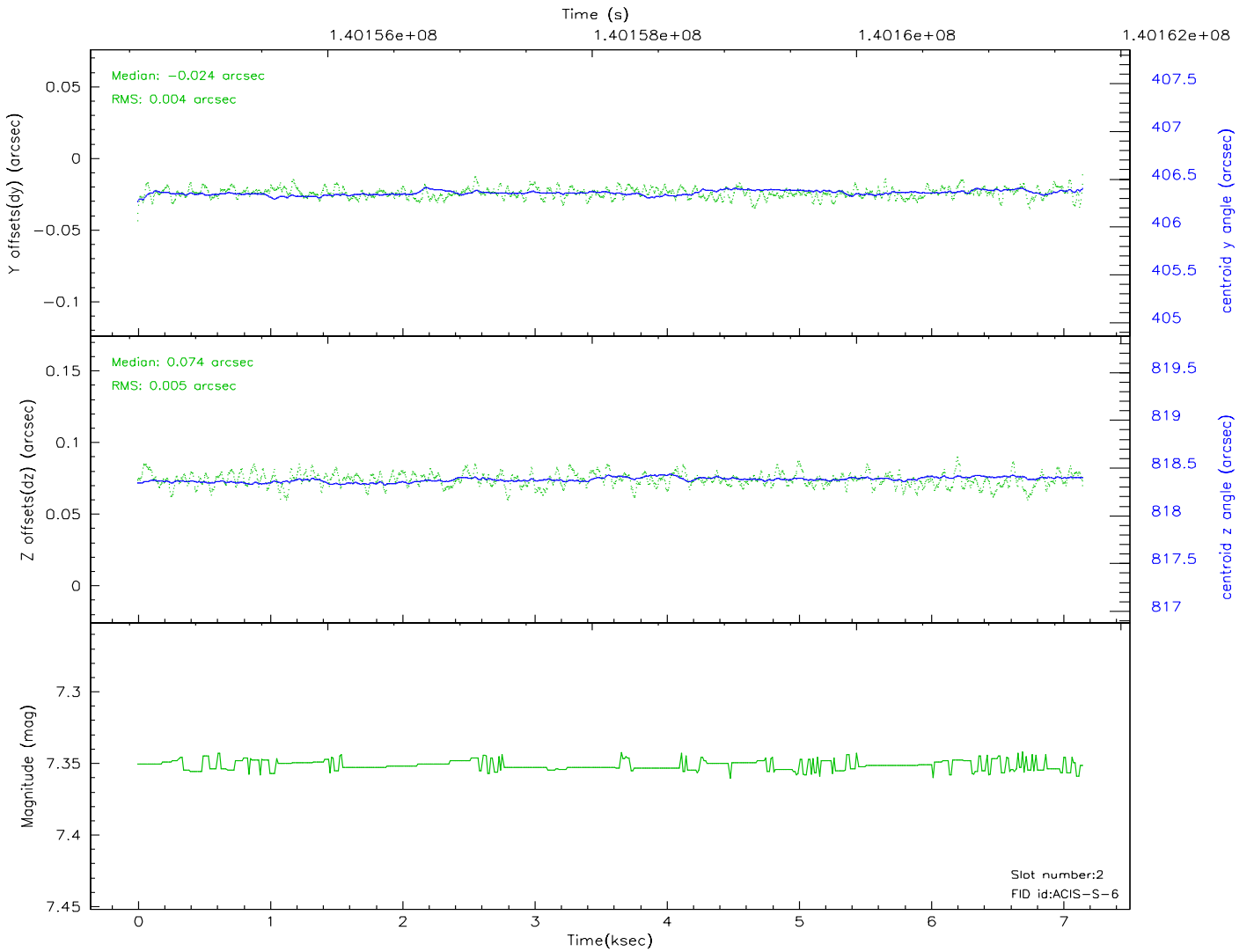
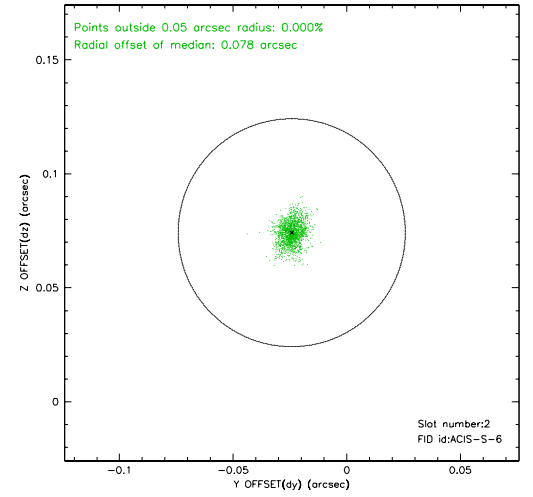
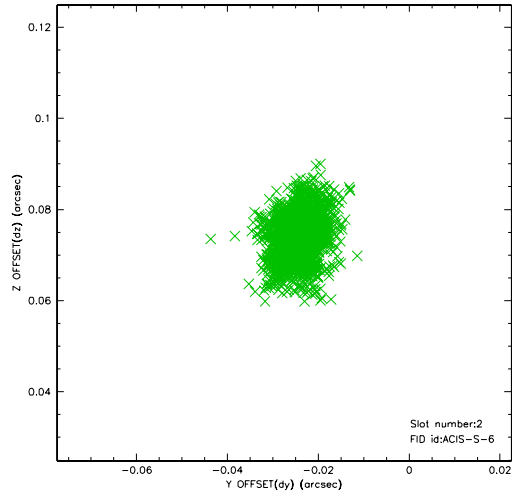
### 2.5.1 Slot 0



## 2.5.2 Slot 1



### 2.5.3 Slot 2





### 3 Point Sources

4.24 arcmin



## A Summary

### A.1 Status

V&V Scientist	Jen Lauer
V&V Date (YYYY-MM-DD)	2006.09.19
V&V Edition	1
V&V Disposition and Status	OK
V&V Charge Time	7.151

### A.2 Comments

Monitor constraint met.