

V&V Reference Report

L2 ASCDS Version : 7.6.8.1

Observation 3422 - L2 Version 001
Chandra X-Ray Center

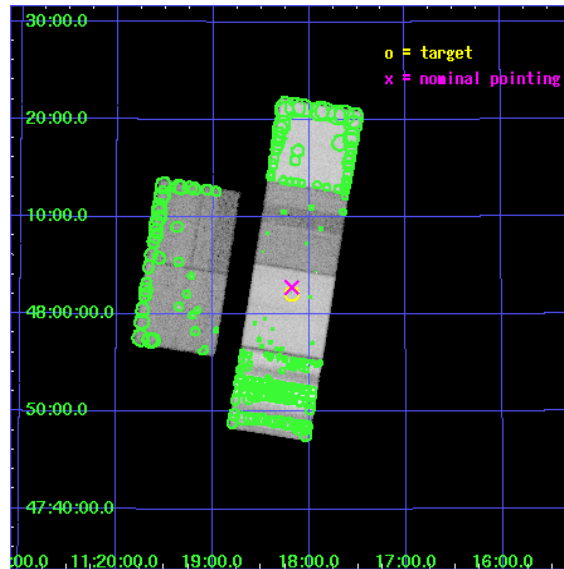
L2 Processing Date : Aug 26 2006

Contents

1	Front	2
2	OBI	3
2.1	OBI	3
2.1.1	Images	3
2.1.2	Bias	3
2.1.3	Parameters	4
2.1.4	Events	4
2.2	Compared Parameters	5
2.3	Aspect	6
2.4	Star Slots	9
2.4.1	Slot 3	9
2.4.2	Slot 4	10
2.4.3	Slot 5	11
2.4.4	Slot 6	12
2.4.5	Slot 7	13
2.5	FID Slots	14
2.5.1	Slot 0	14
2.5.2	Slot 1	15
2.5.3	Slot 2	16
3	Point Sources	17
A	Summary	18
A.1	Status	18
A.2	Comments	18

1 Front

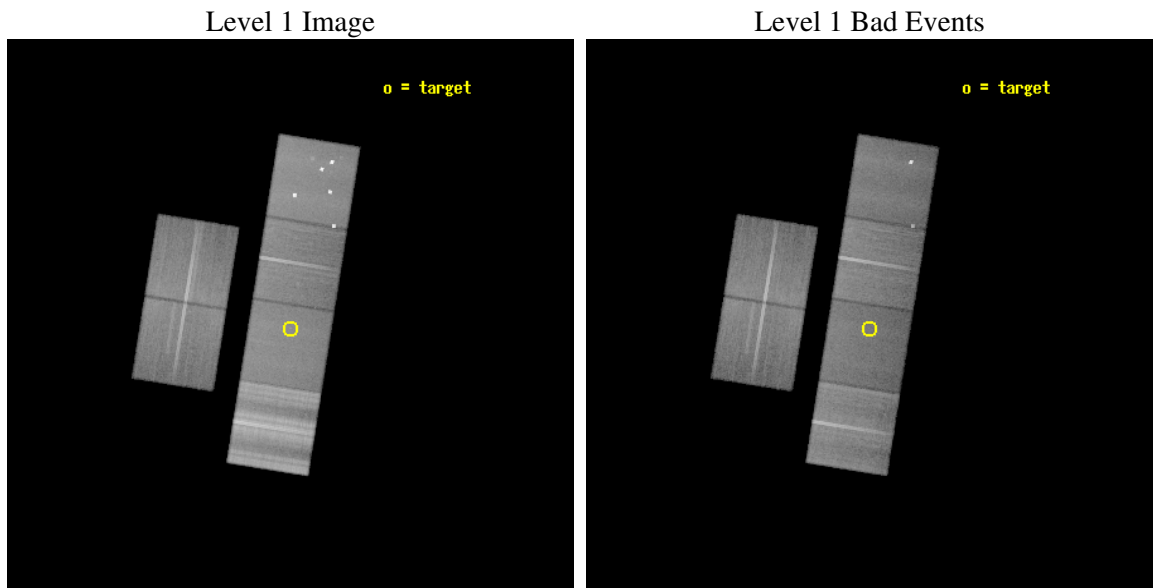
seq_num	400231
obs_id	3422
title	MULTIWAVELENGTH OBSERVATIONS OF THE BLACK HOLE XTE J1118+480 IN QUIESCENCE
observer	Dr. Stephen Murray
object	XTE J1118+480
dtcycle	0
cycle	P
ra_targ	169.545
dec_targ	48.03675
ra_nom	169.54526334222
dec_nom	48.046470387422
roll_nom	99.13100537424
revision	2
ontime	46358.400043175
livetime	45771.382068151
ontime2	46358.400043175
ontime3	46355.159042984
ontime5	46358.400043175
ontime6	46348.677192152
ontime7	46358.400043175
ontime8	46355.159072921
l2events	682116



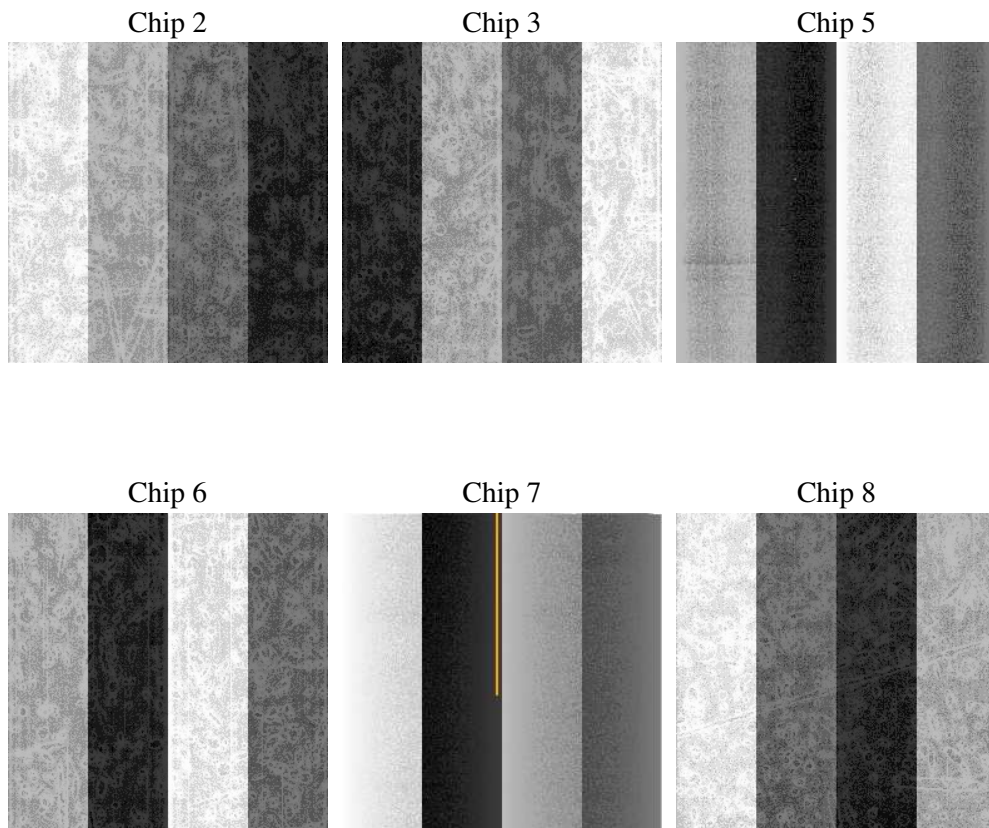
2 OBI

2.1 OBI

2.1.1 Images



2.1.2 Bias



2.1.3 Parameters

obi_num	1
ascdsver	7.6.8.1
caldsver	3.2.3
date	2006-08-26T09:06:49
revision	2

sched_exp_time	46400.000000
ontime	46365.791374668
ontime2	46365.791344762
ontime3	46362.550344571
ontime5	46365.791374668
ontime6	46356.068493739
ontime7	46365.791374668
ontime8	46362.550374508
l1events	2733394

2.1.4 Events

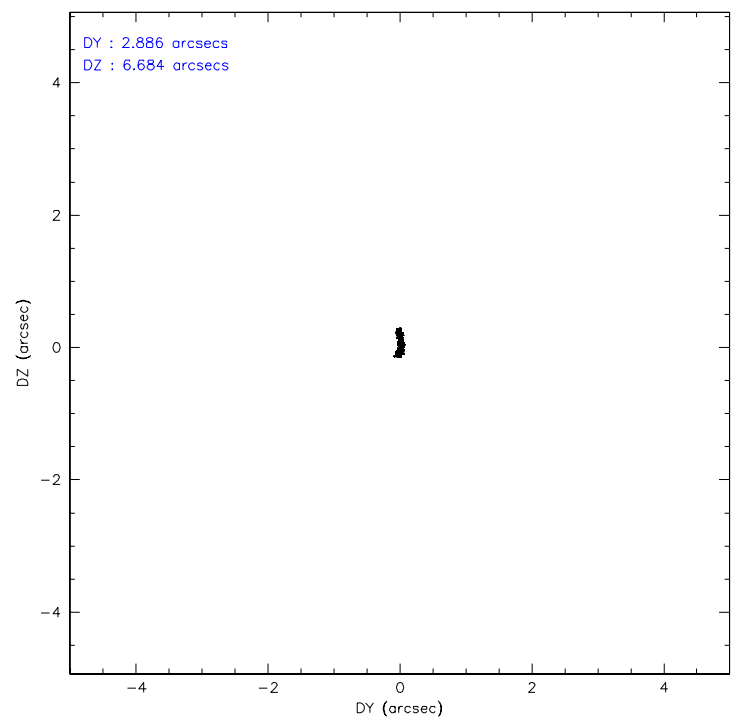
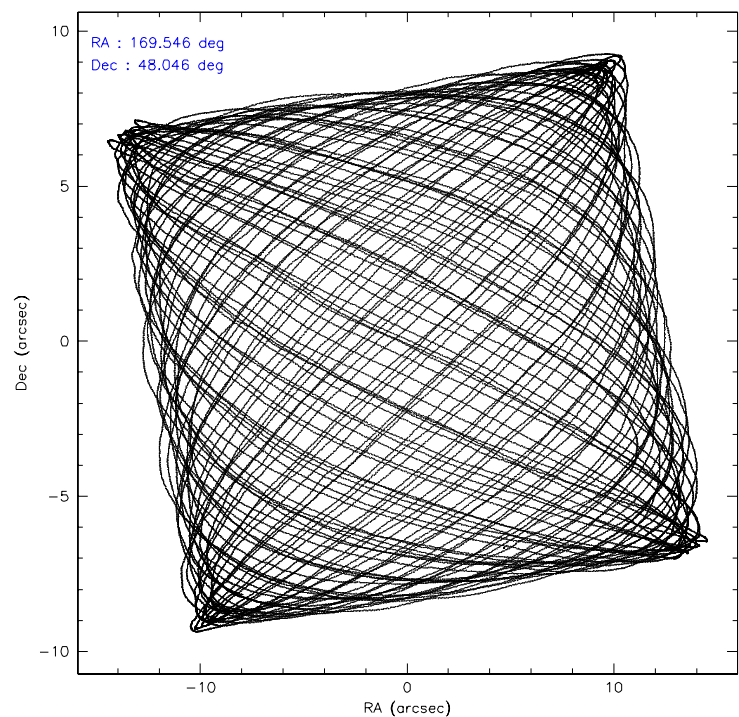
	ccd 2	ccd 3	ccd 5	ccd 6	ccd 7	ccd 8
level 1 events	378876	353965	497925	376814	404620	721194
rejected events	320940	299606	252948	317898	236387	363708
rejected %	84%	84%	50%	84%	58%	50%

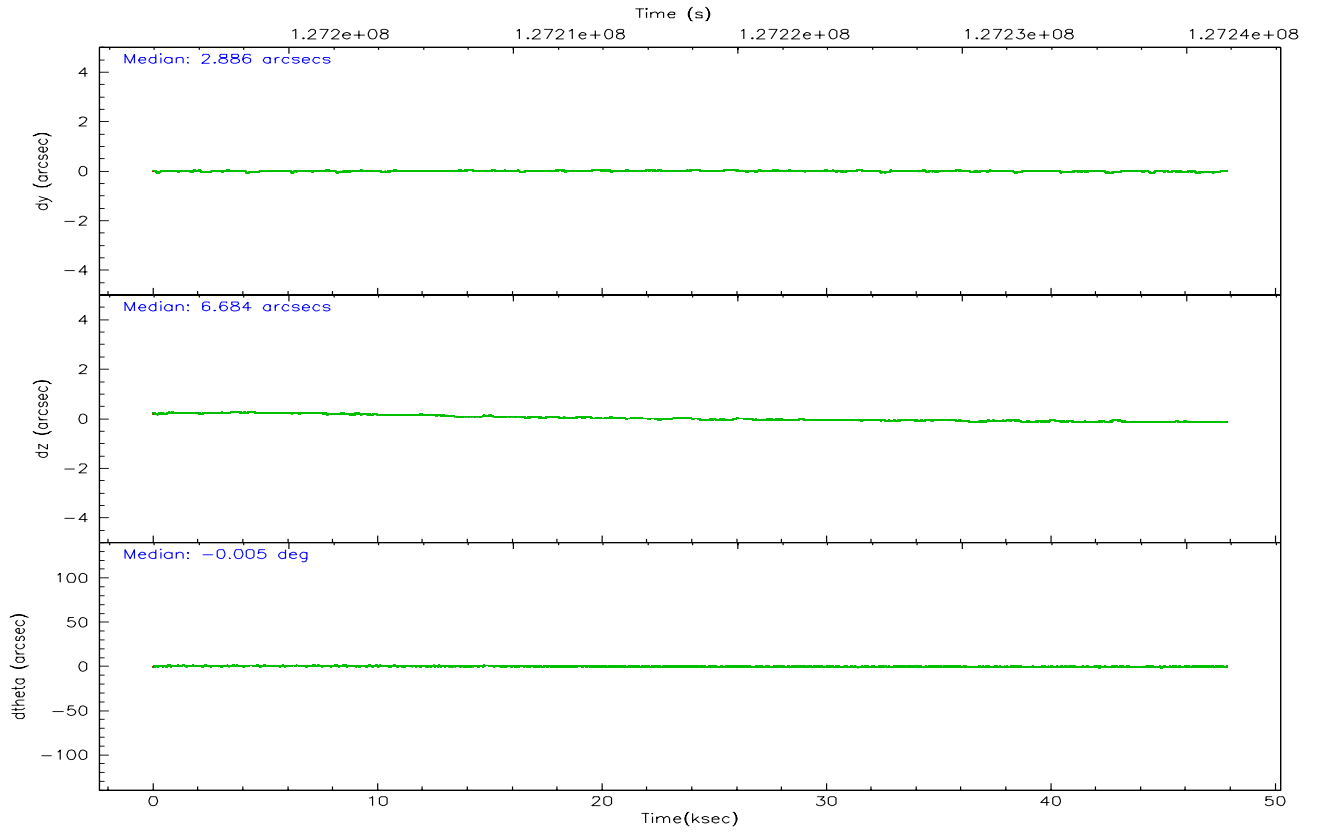
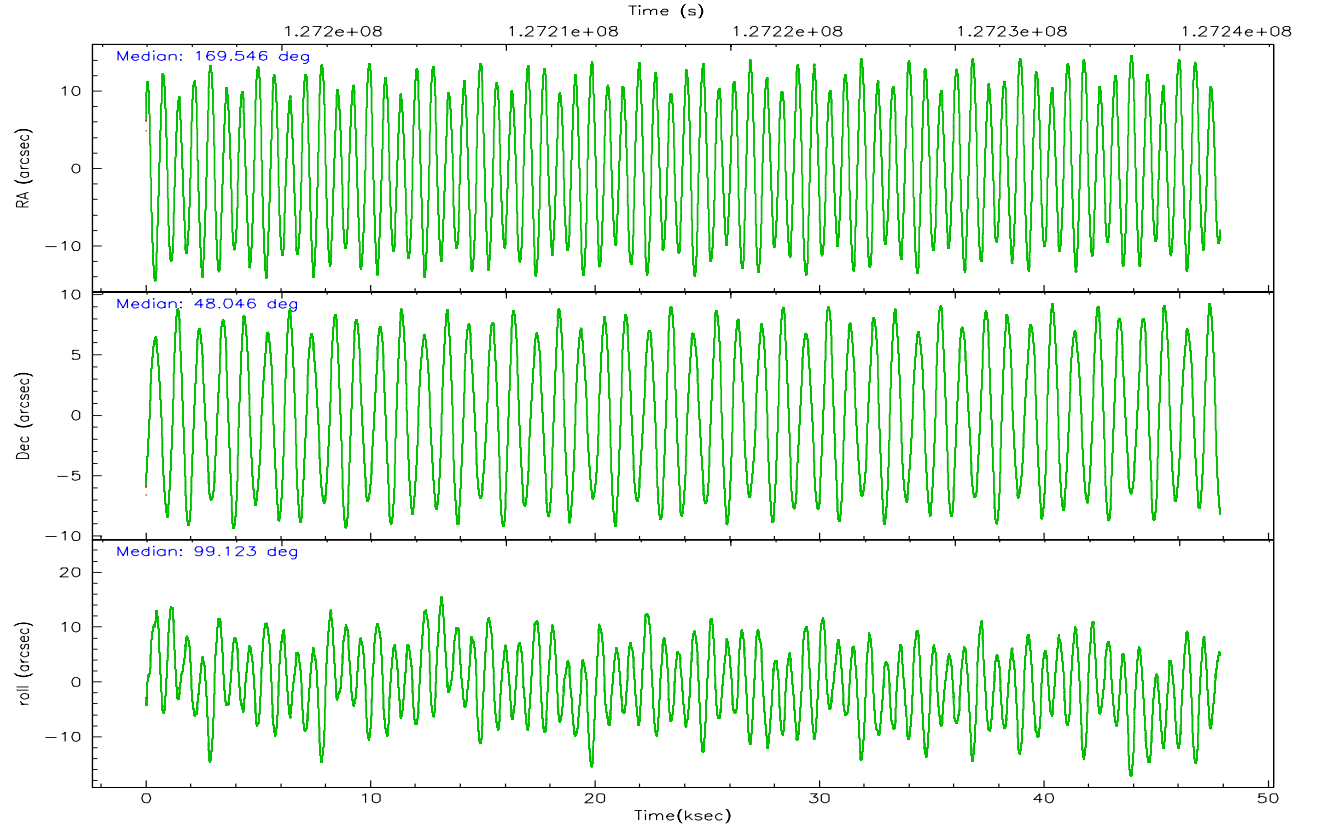
	ccd 2	ccd 3	ccd 5	ccd 6	ccd 7	ccd 8
grade 0 events	23996	21497	45263	24298	11697	110417
	6%	6%	9%	6%	2%	15%
grade 1 events	210	158	823	189	286	862
	0%	0%	0%	0%	0%	0%
grade 2 events	16175	15005	68989	16565	42026	55896
	4%	4%	13%	4%	10%	7%
grade 3 events	3279	3470	7230	3691	9298	59511
	0%	0%	1%	0%	2%	8%
grade 4 events	4193	3609	6712	3625	9129	52471
	1%	1%	1%	0%	2%	7%
grade 5 events	10291	11174	23650	12207	25495	19144
	2%	3%	4%	3%	6%	2%
grade 6 events	10304	10784	116814	10740	96102	79249
	2%	3%	23%	2%	23%	10%
grade 7 events	310428	288268	228444	305499	210587	343644
	81%	81%	45%	81%	52%	47%

2.2 Compared Parameters

Parameter	Planned	Actual	Parameter	Planned	Actual
Instrument	ACIS	ACIS	Obspar format version number	6	6
Detector	ACIS-235678	ACIS-235678	Obspar file type	PREDICTED	ACTUAL
Grating	NONE	NONE	Obspar update status	NONE	UPDATED
Data mode	VFAINT	VFAINT	On-chip summing requested	N	N
Observation mode	POINTING	POINTING	Subarray requested	NONE	NONE
Pointing RA	169.571365	169.5452633422169	Alternating exposures requested	N	N
Pointing Dec	48.025530	48.04647038742152	Primary exposure time	0.000000	3.2
Pointing Roll	98.954974	99.13100537423979			
SIM focus pos (mm)	-0.684267	-0.6828225247311905			
SIM defocus (mm)	0	0.001444936568705701			
SIM translation stage pos (mm)	-190.132523	-190.1400660498719			
SIM translation stage offset (mm)	0	0.00754346686406393			
Observation start time	127195144.184000	127193679.30056			
Observation start date	2002-01-12T03:58:00	2002-01-12T03:34:39			
Observation end time	127241544.184000	127242125.92751			
Observation end date	2002-01-12T16:51:20	2002-01-12T17:02:05			
Read mode	TIMED	TIMED			

2.3 Aspect



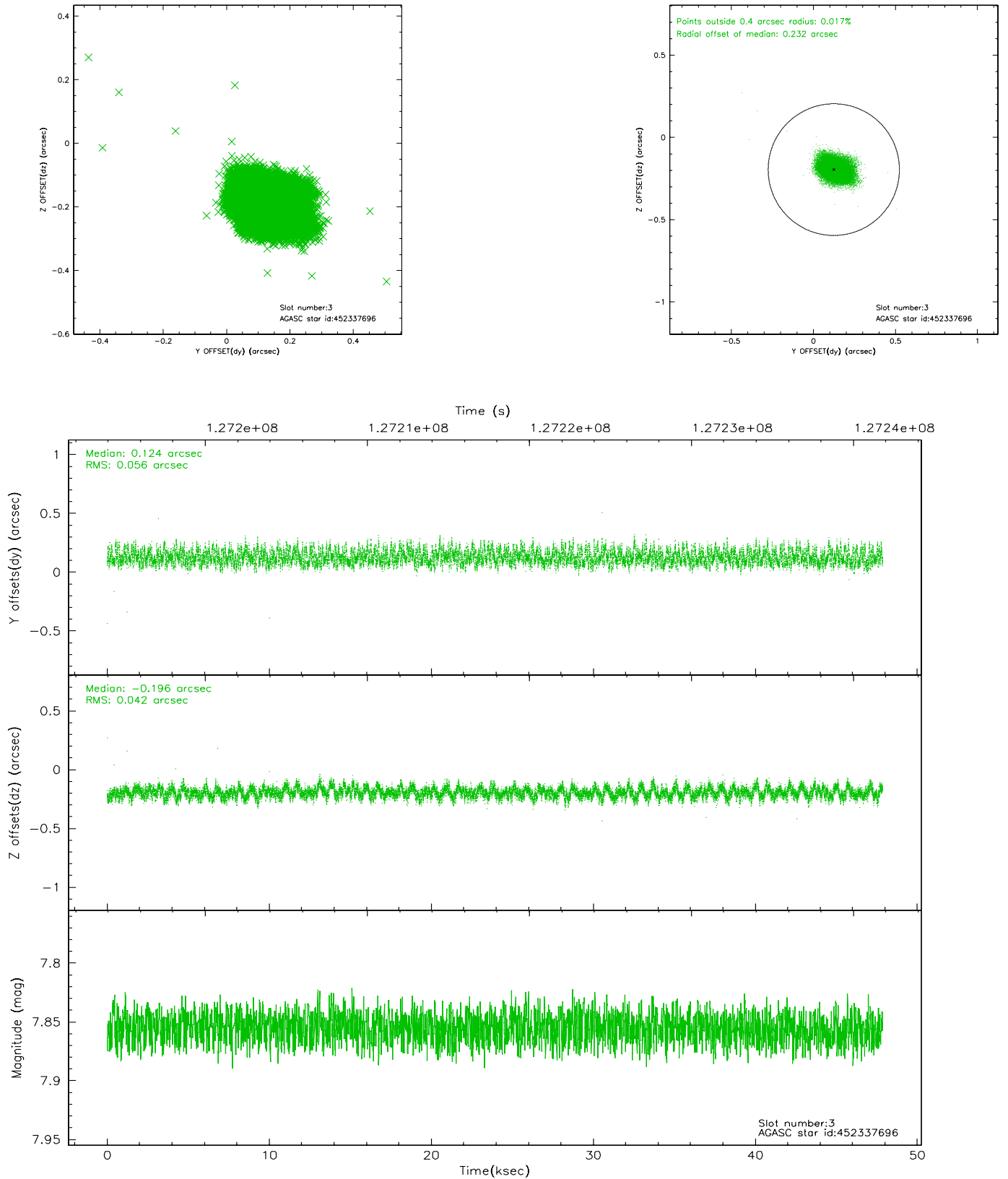


Slot Statistics

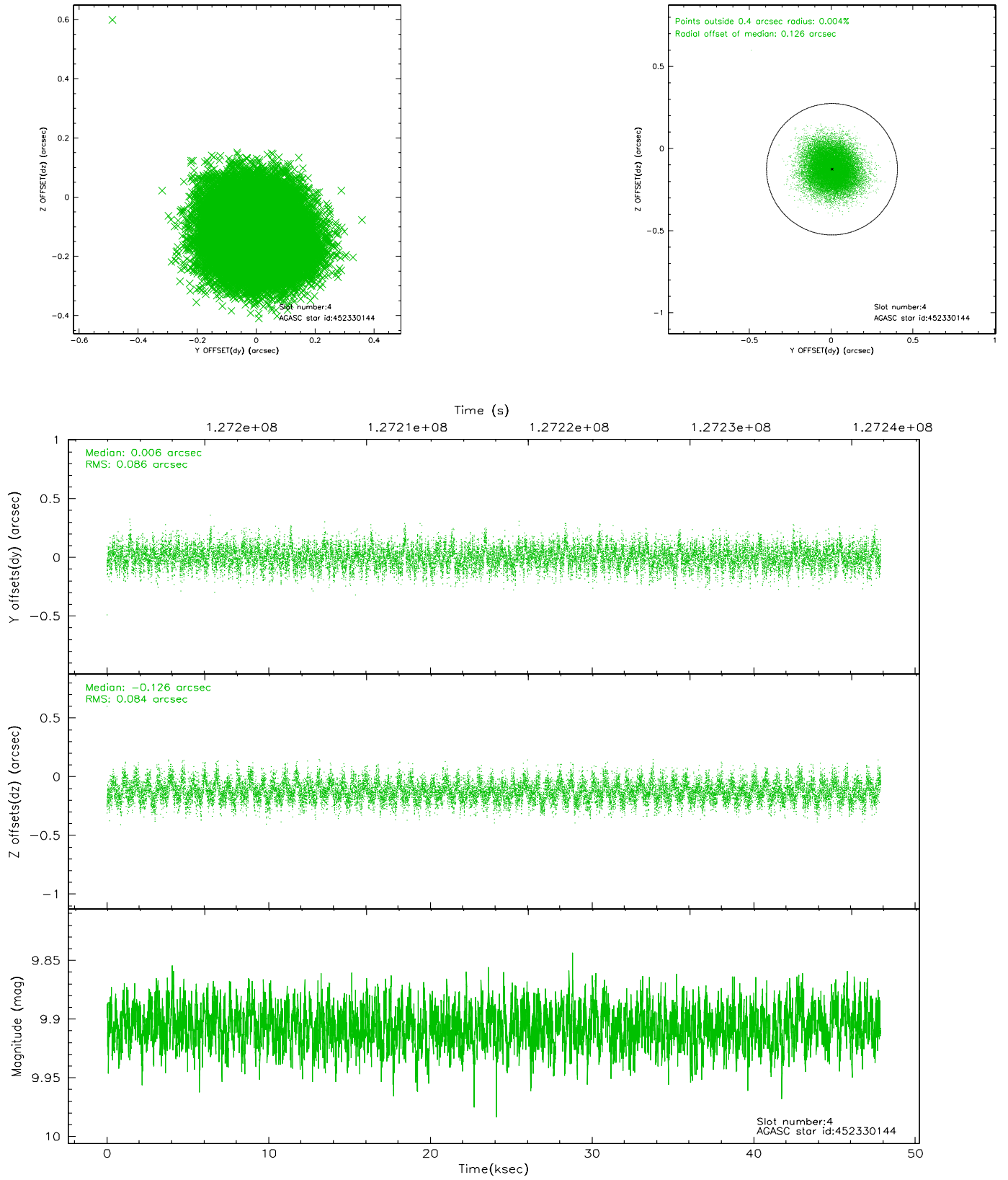
slot	status	id	mag	n_pts	med_dy	med_dz	dr1	dr2	ra	dec	mean_y	mean_z
0	FID	ACIS-S-2	7.12	11676	-0.011	0.030	0.007	0.012	0.000000	0.000000	-755.52	-1727.85
1	FID	ACIS-S-4	7.20	11674	-0.069	-0.003	0.006	0.011	0.000000	0.000000	2157.69	180.64
2	FID	ACIS-S-5	7.24	11676	0.049	-0.018	0.006	0.011	0.000000	0.000000	-1808.33	174.24
3	GUIDE	452337696	7.85	23350	0.124	-0.196	0.074	0.119	168.869582	47.479497	-1668.43	1991.87
4	GUIDE	452330144	9.91	23338	0.006	-0.126	0.129	0.204	169.116291	48.616983	2274.96	739.05
5	GUIDE	452329856	10.11	23338	-0.195	0.346	0.136	0.222	170.088304	48.576176	1770.85	-1524.08
6	GUIDE	452335192	9.86	23292	0.079	0.058	0.142	0.242	170.184144	47.953835	-478.61	-1419.45
7	GUIDE	452330336	9.73	23330	-0.017	-0.093	0.111	0.178	168.787124	48.590922	2310.57	1527.37

2.4 Star Slots

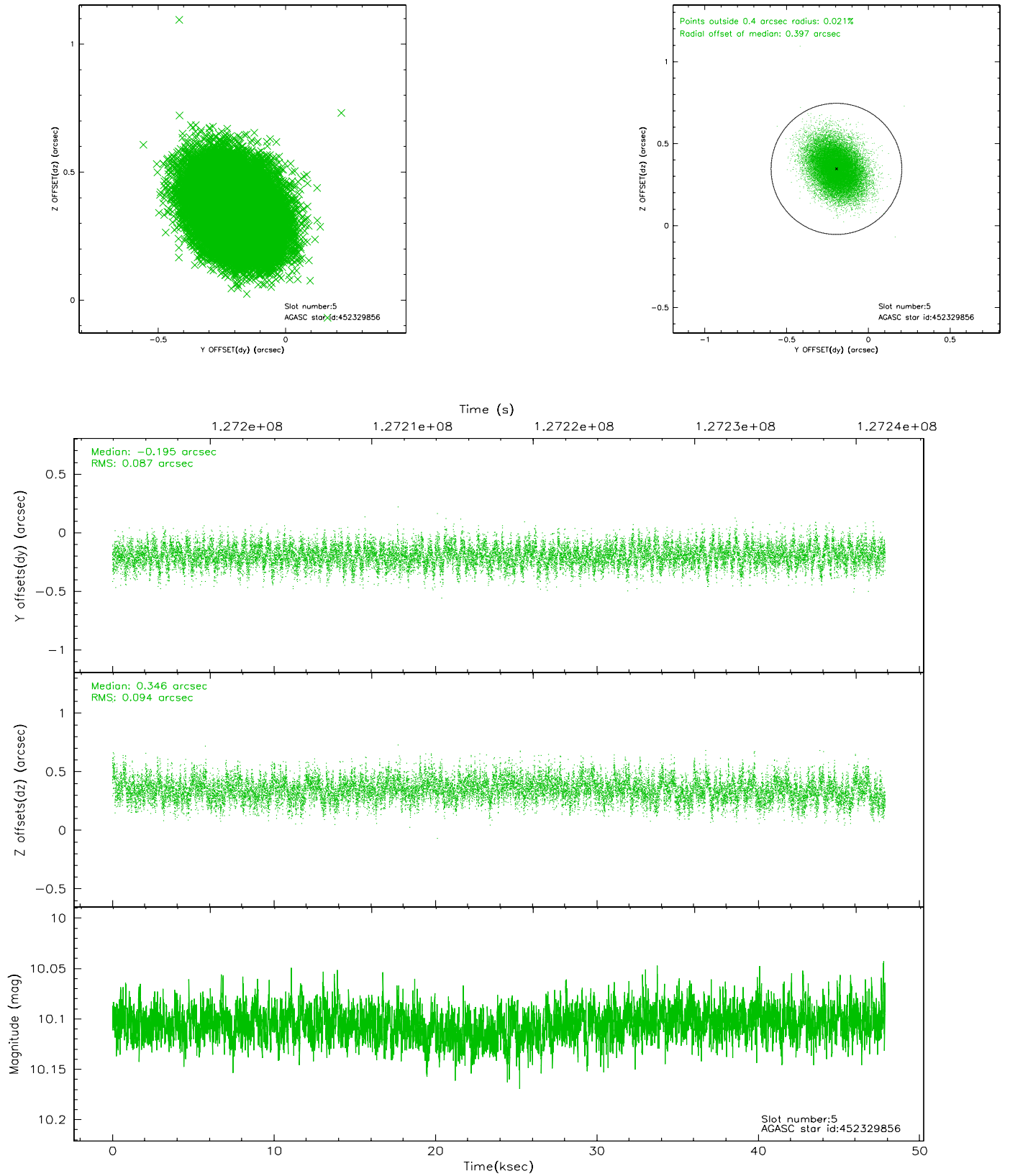
2.4.1 Slot 3



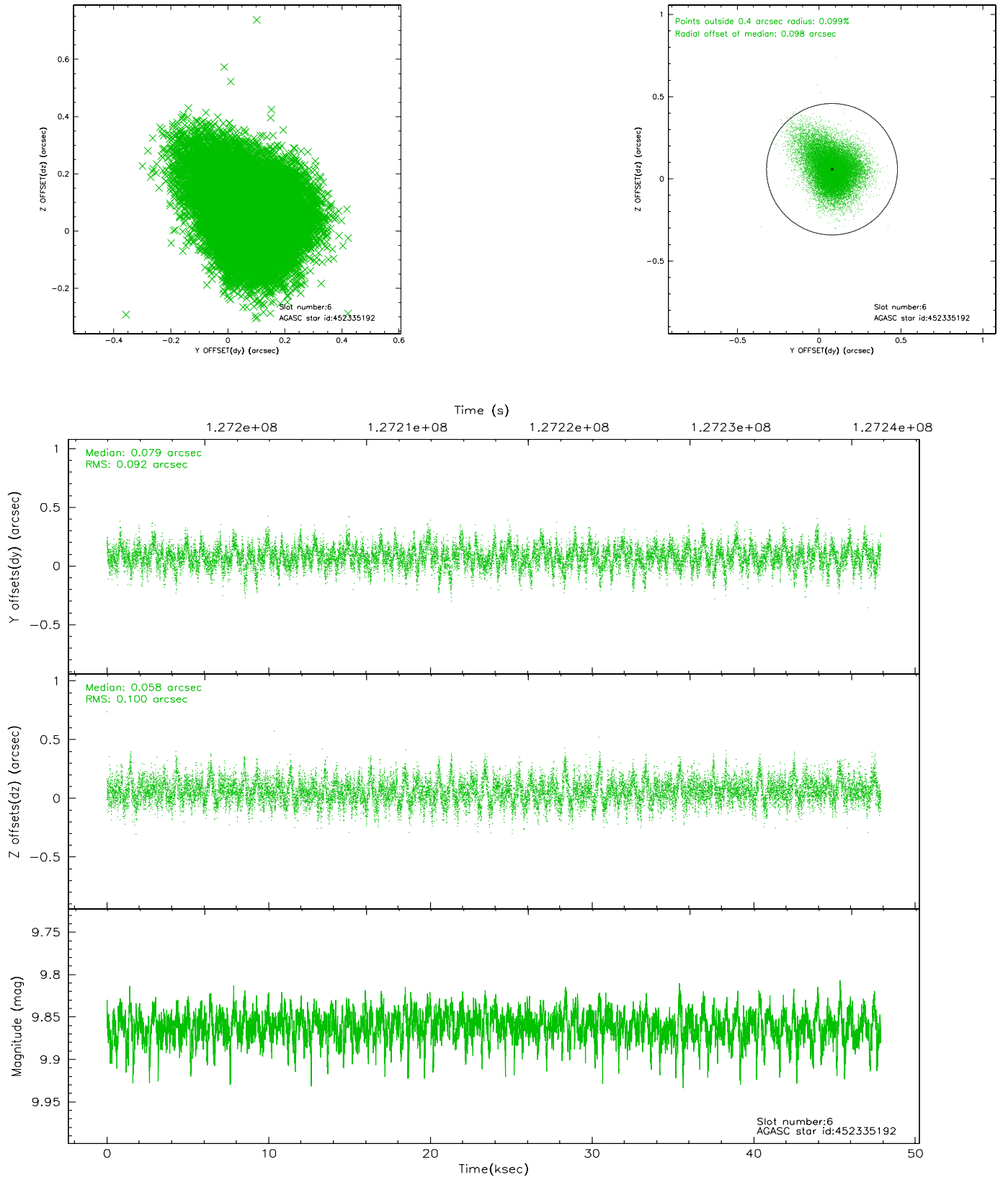
2.4.2 Slot 4



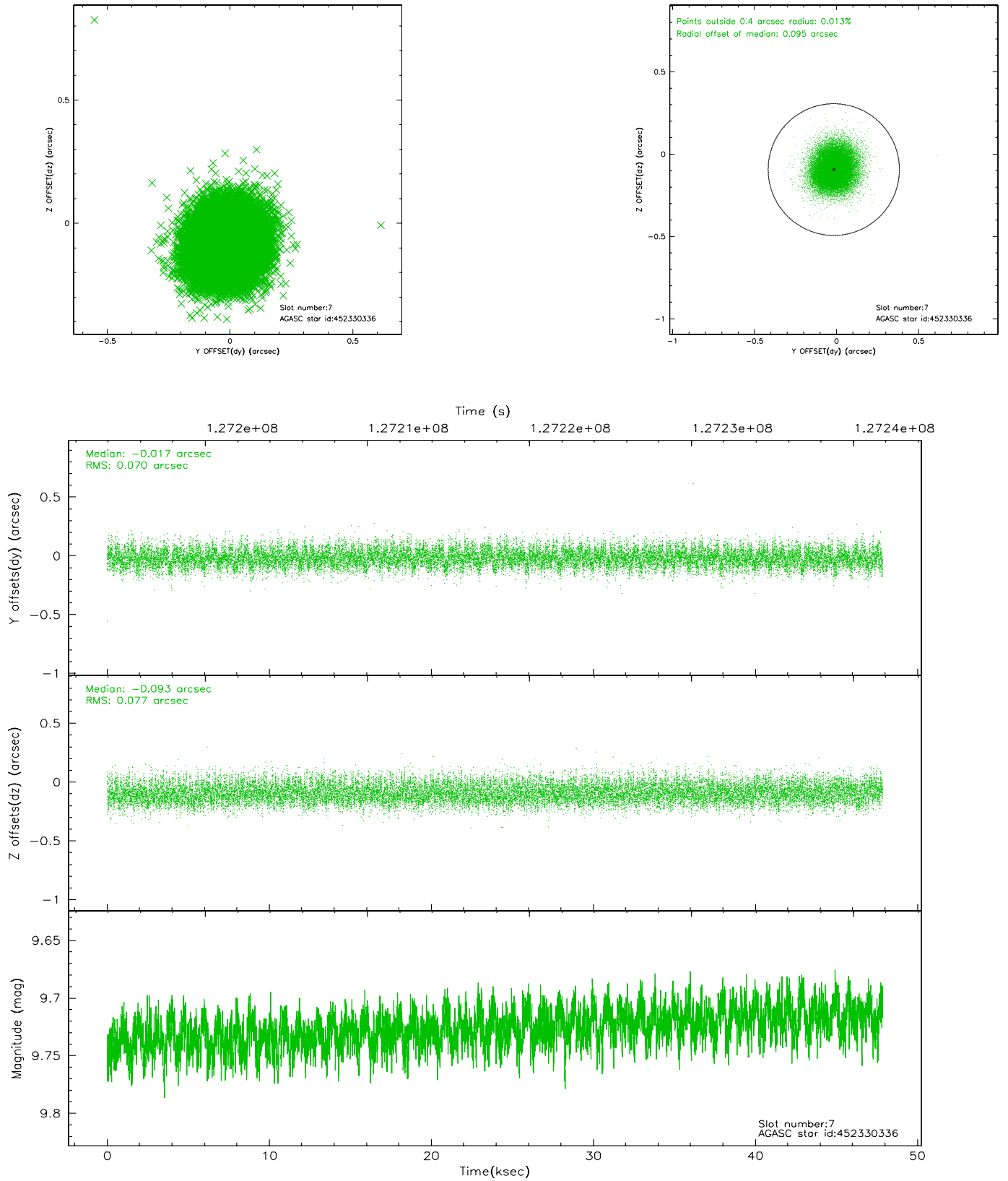
2.4.3 Slot 5



2.4.4 Slot 6

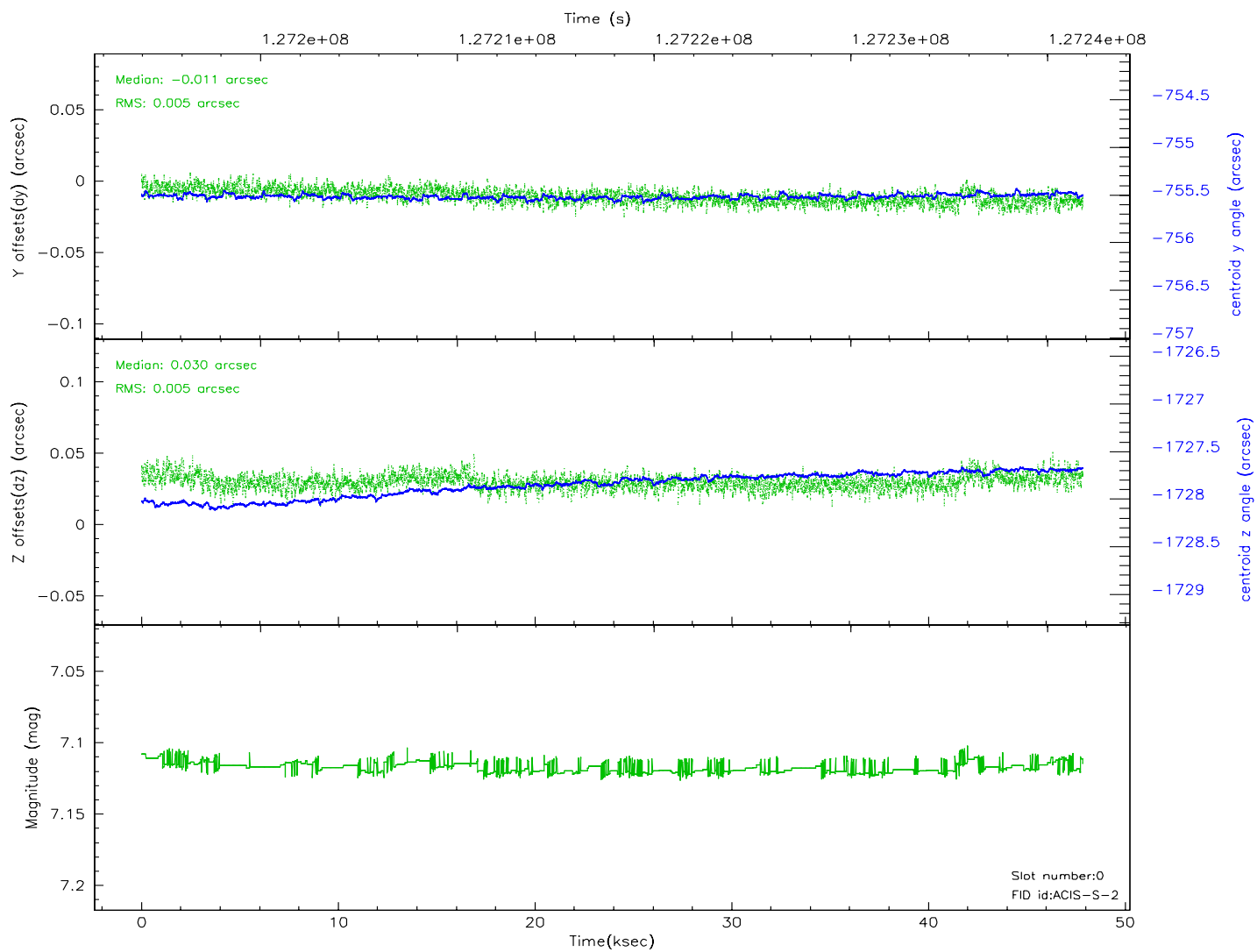
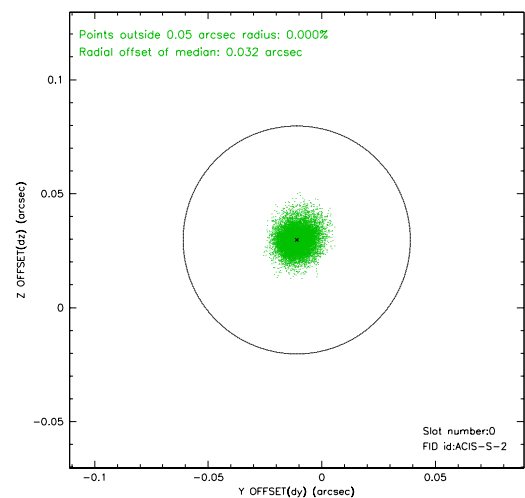
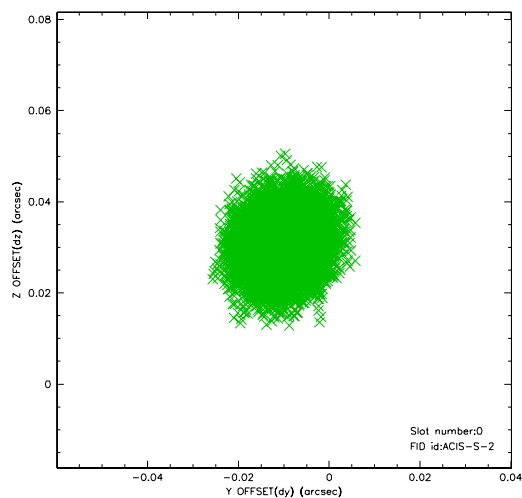


2.4.5 Slot 7

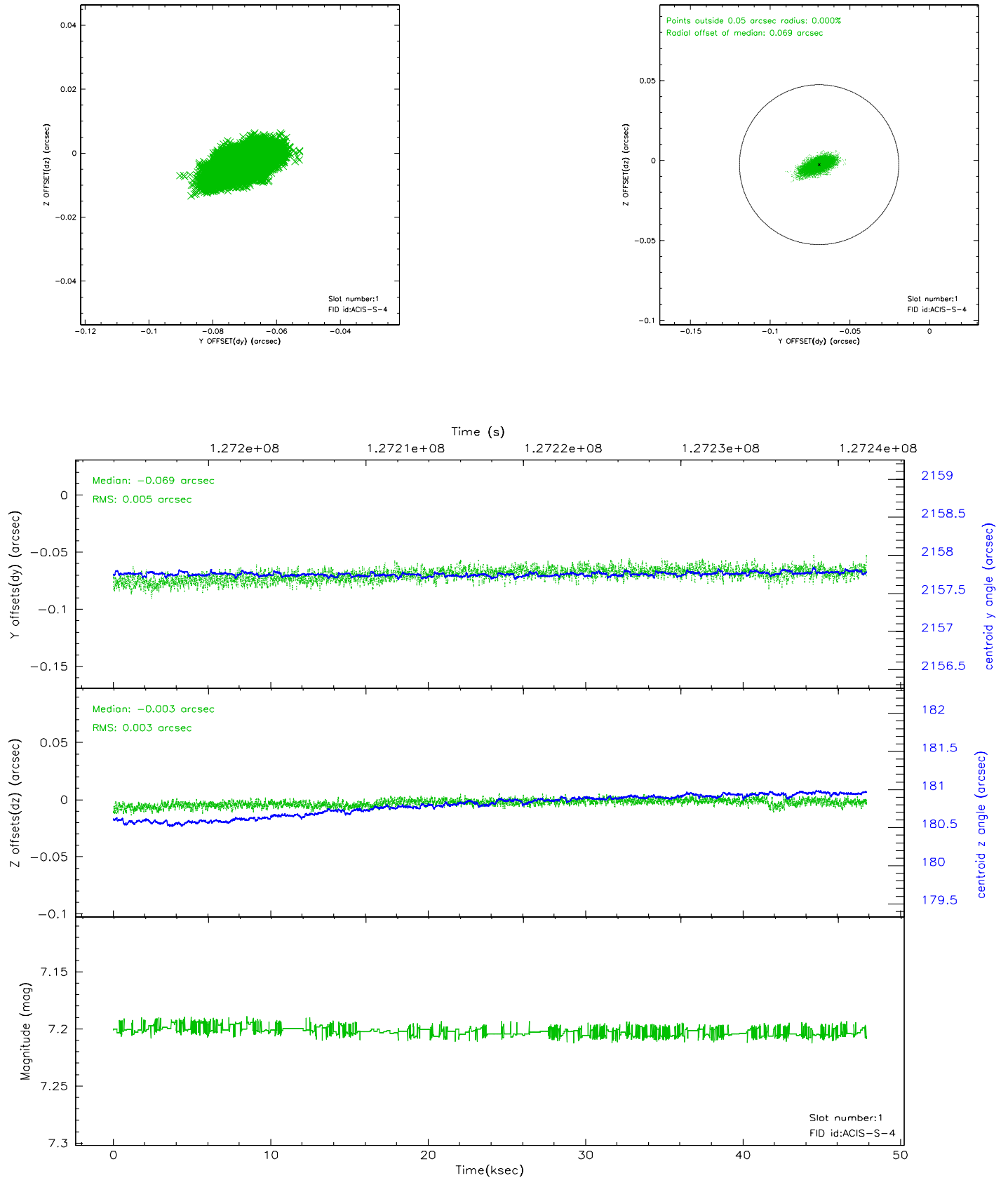


2.5 FID Slots

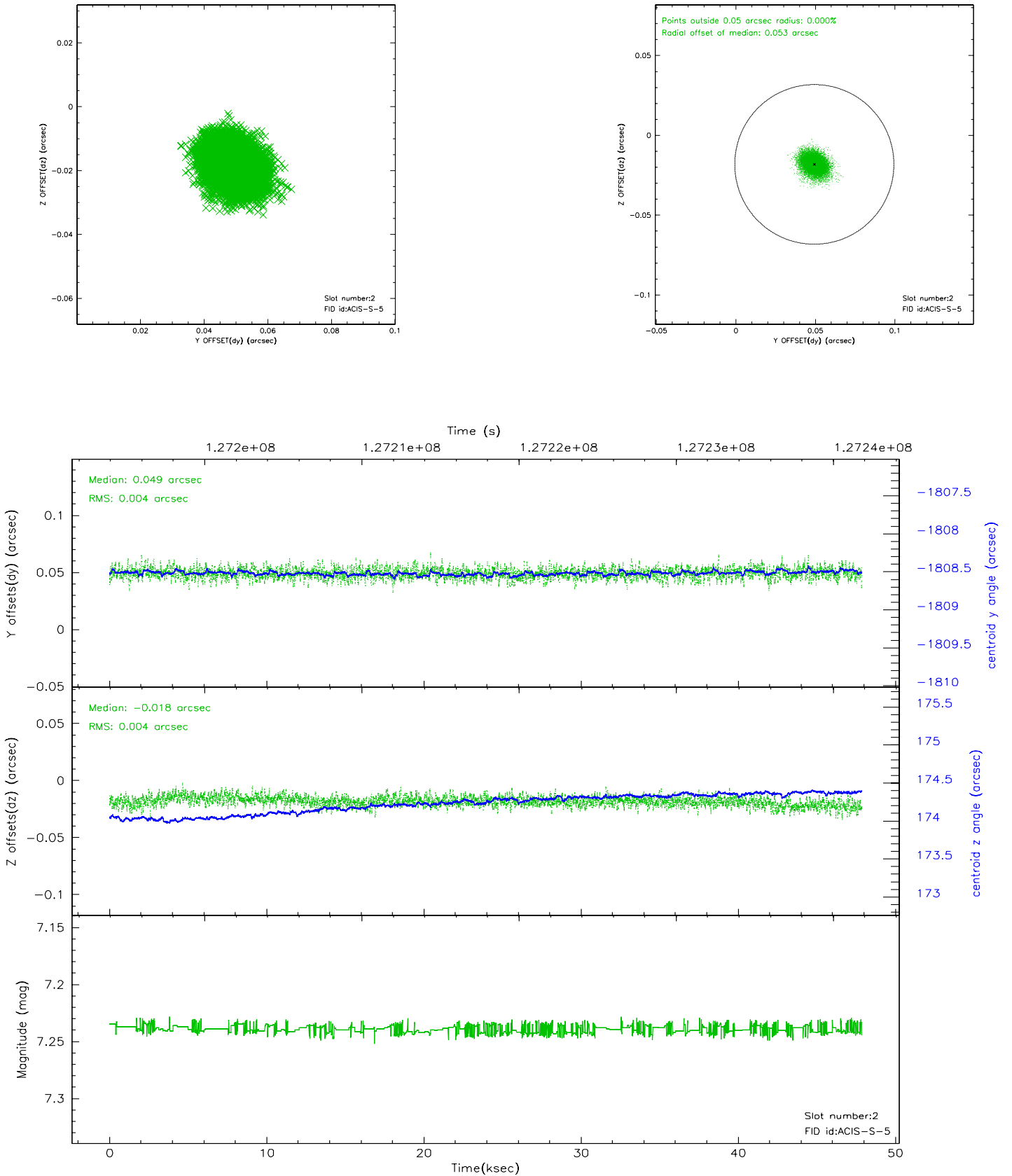
2.5.1 Slot 0



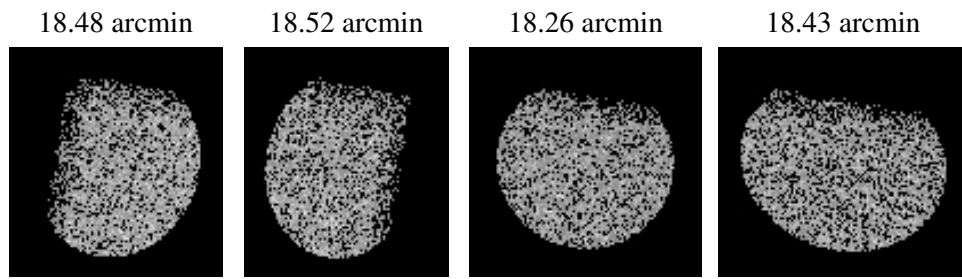
2.5.2 Slot 1



2.5.3 Slot 2



3 Point Sources



A Summary

A.1 Status

V&V Scientist	Beth Sundheim
V&V Date (YYYY-MM-DD)	2006.08.28
V&V Edition	1
V&V Disposition and Status	OK
V&V Charge Time	46.361

A.2 Comments