

# V&V Reference Report

## L2 ASCDS Version : 7.6.9

Observation 3384 - L2 Version 001  
Chandra X-Ray Center

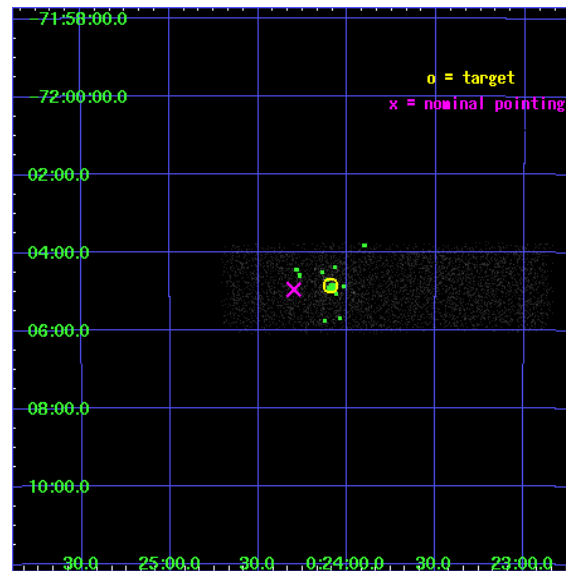
L2 Processing Date : Oct 5 2006

## Contents

<b>1</b>	<b>Front</b>	<b>2</b>
<b>2</b>	<b>OBI</b>	<b>3</b>
2.1	OBI . . . . .	3
2.1.1	Images . . . . .	3
2.1.2	Bias . . . . .	3
2.1.3	Parameters . . . . .	4
2.1.4	Events . . . . .	4
2.2	Compared Parameters . . . . .	5
2.3	Aspect . . . . .	6
2.4	Star Slots . . . . .	9
2.4.1	Slot 3 . . . . .	9
2.4.2	Slot 4 . . . . .	10
2.4.3	Slot 5 . . . . .	11
2.4.4	Slot 6 . . . . .	12
2.4.5	Slot 7 . . . . .	13
2.5	FID Slots . . . . .	14
2.5.1	Slot 0 . . . . .	14
2.5.2	Slot 1 . . . . .	15
2.5.3	Slot 2 . . . . .	16
<b>3</b>	<b>Point Sources</b>	<b>17</b>
<b>A</b>	<b>Summary</b>	<b>18</b>
A.1	Status . . . . .	18
A.2	Comments . . . . .	18

# 1 Front

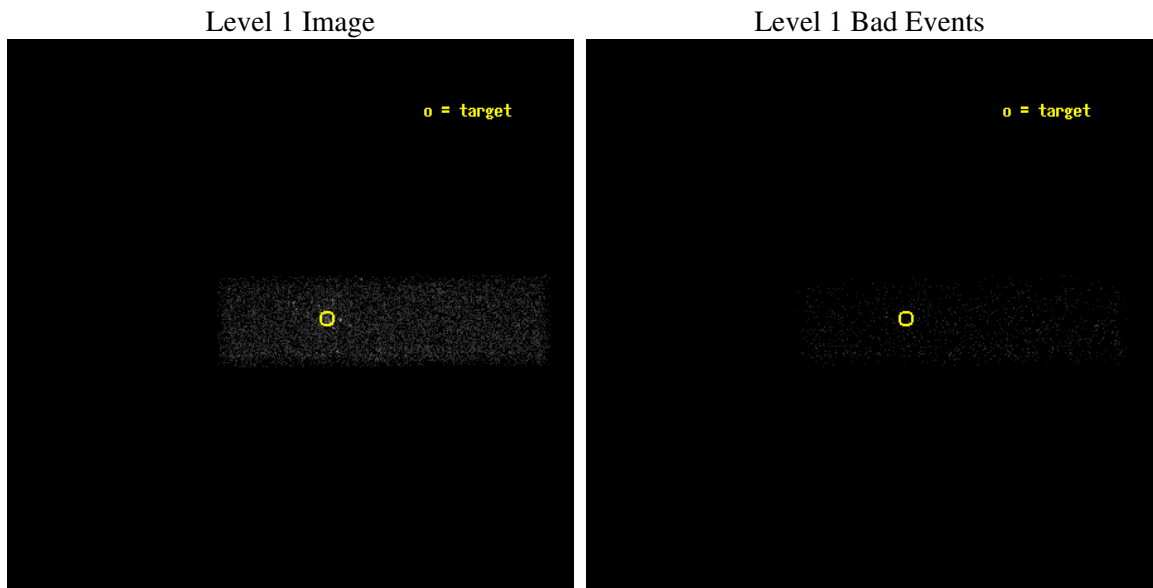
seq_num	400215
obs_id	3384
title	COMPLETE COMPACT OBJECT AND BINARY SURVEY OF 47TUC
observer	Prof. Jonathan Grindlay
object	47 TUCANAE
dtcycle	0
cycle	P
ra_targ	6.024167
dec_targ	-72.080889
ra_nom	6.0751540173349
dec_nom	-72.082633781057
roll_nom	359.62857457781
revision	2
ontime	5579.2000831366
livetime	5306.9533749991
ontime7	5579.2000831366
l2events	7582



## 2 OBI

### 2.1 OBI

#### 2.1.1 Images



#### 2.1.2 Bias

Chip 7



### 2.1.3 Parameters

obi_num	0
ascdsver	7.6.9
caldbver	3.2.3
date	2006-10-05T15:41:31
revision	2

sched_exp_time	4750.000000
ontime	5580.2334710658
ontime7	5580.2334710658
l1events	14748

### 2.1.4 Events

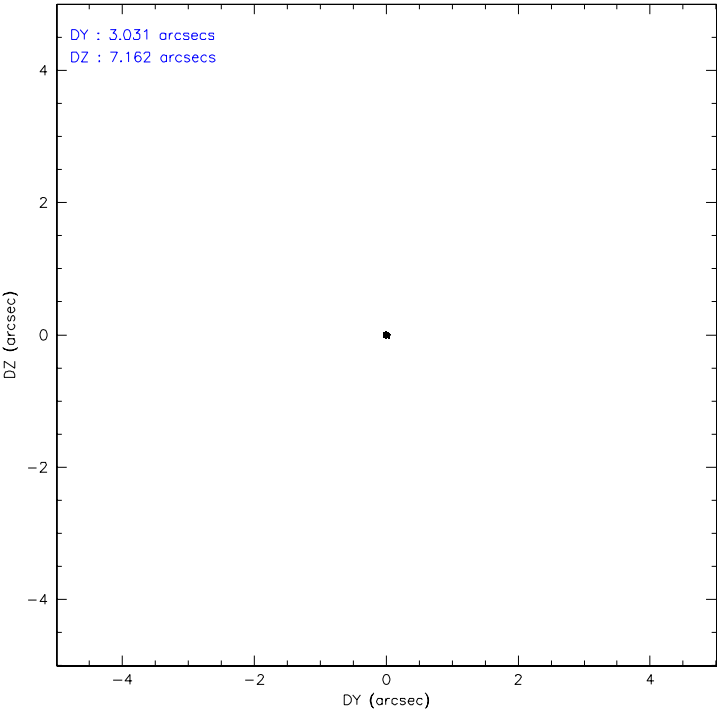
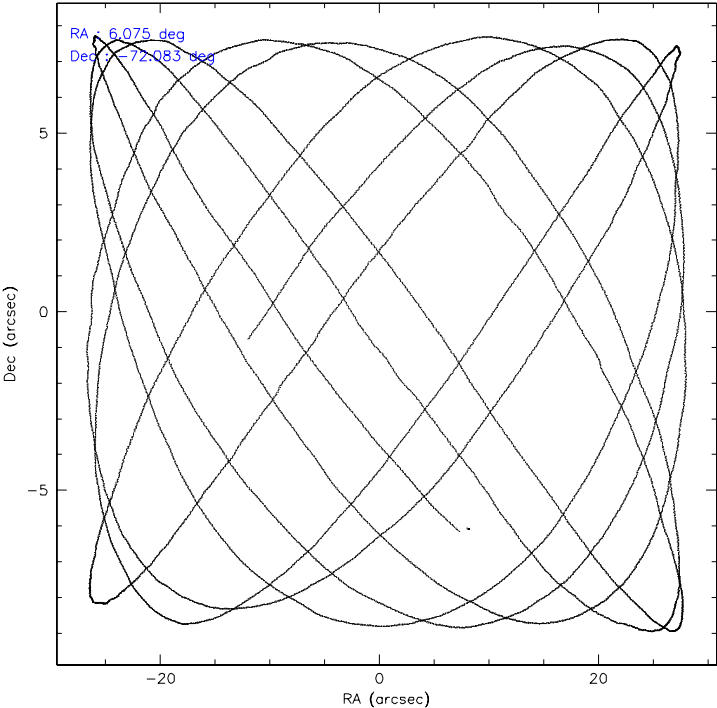
	<b>ccd 7</b>
level 1 events	14748
rejected events	7002
rejected %	47%

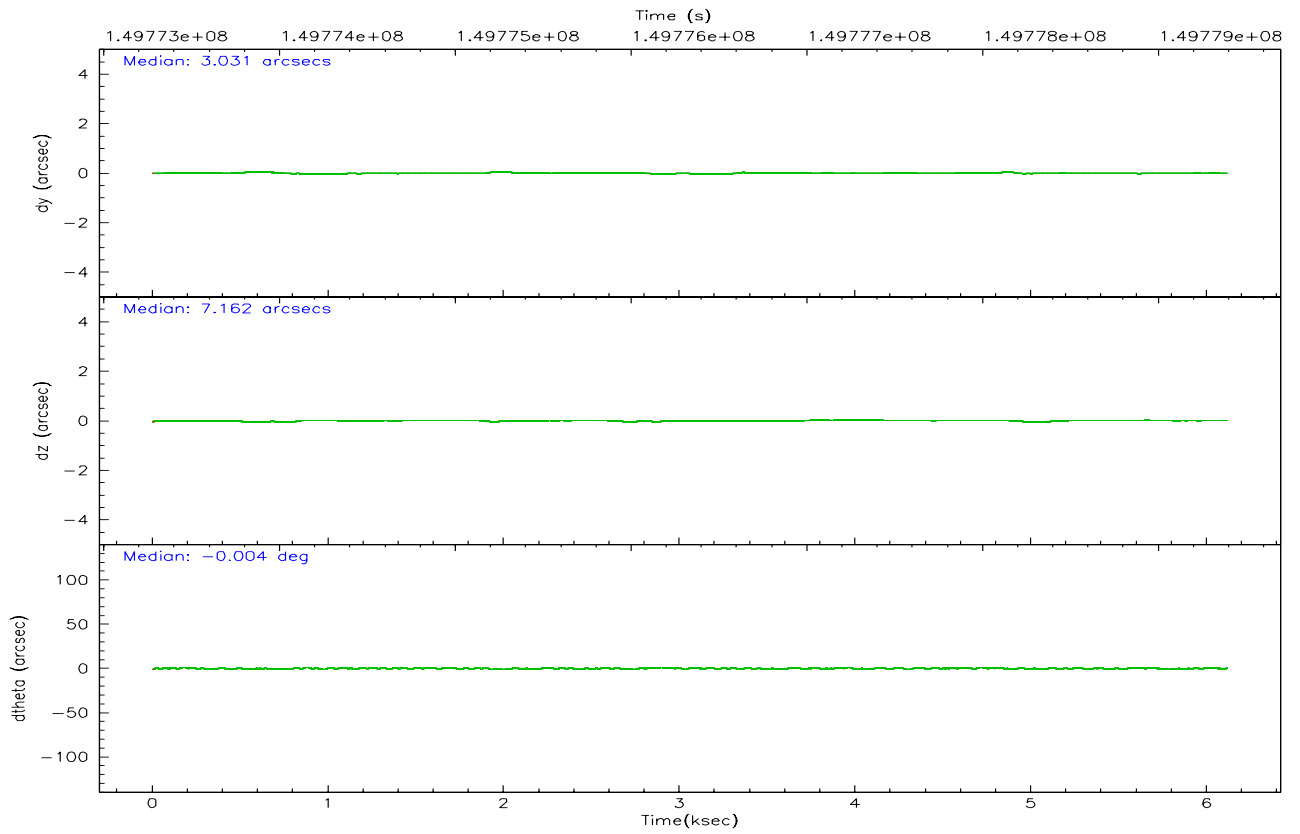
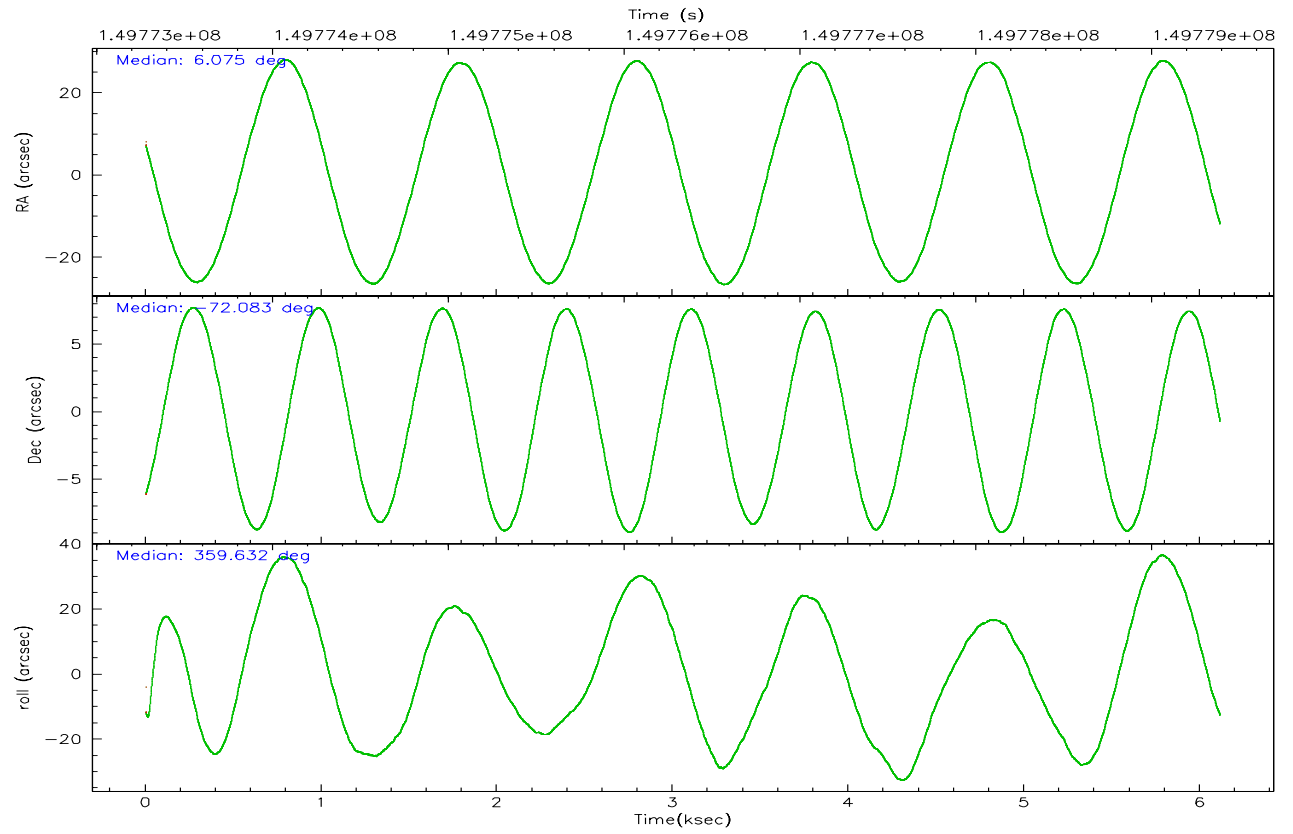
	<b>ccd 7</b>
grade 0 events	1348
	9%
grade 1 events	19
	0%
grade 2 events	1897
	12%
grade 3 events	705
	4%
grade 4 events	702
	4%
grade 5 events	915
	6%
grade 6 events	3094
	20%
grade 7 events	6068
	41%

## 2.2 Compared Parameters

Parameter	Planned	Actual	Parameter	Planned	Actual
Instrument	ACIS	ACIS	Obspar format version number	6	6
Detector	ACIS-7	ACIS-7	Obspar file type	PREDICTED	ACTUAL
Grating	NONE	NONE	Obspar update status	NONE	UPDATED
Data mode	FAINT	FAINT	Number of optional ACIS chips dropped	0	0
Observation mode	POINTING	POINTING	On-chip summing requested	N	N
Pointing RA	5.998730	6.075154017334911	Subarray requested	CUSTOM	1/4
Pointing Dec	-72.096485	-72.08263378105724	Subarray start row	384	384
Pointing Roll	359.399318	359.6285745778146	Subarray row count	256	256
Window start time	149701144.184000	149701144.184000	Alternating exposures requested	N	N
Window stop time	149857624.184000	149857624.184000	Primary exposure time	0.000000	0.8
SIM focus pos (mm)	-0.684267	-0.6828225247311905			
SIM defocus (mm)	0	0.001444936568705701			
SIM translation stage pos (mm)	-190.132523	-190.1400660498719			
SIM translation stage offset (mm)	0	0.00754346686406393			
Observation start time	149774648.184000	149773102.33466			
Observation start date	2002-09-30T12:03:04	2002-09-30T11:38:22			
Observation end time	149779398.184000	149779532.67243			
Observation end date	2002-09-30T13:22:14	2002-09-30T13:25:32			
Read mode	TIMED	TIMED			

### 2.3 Aspect





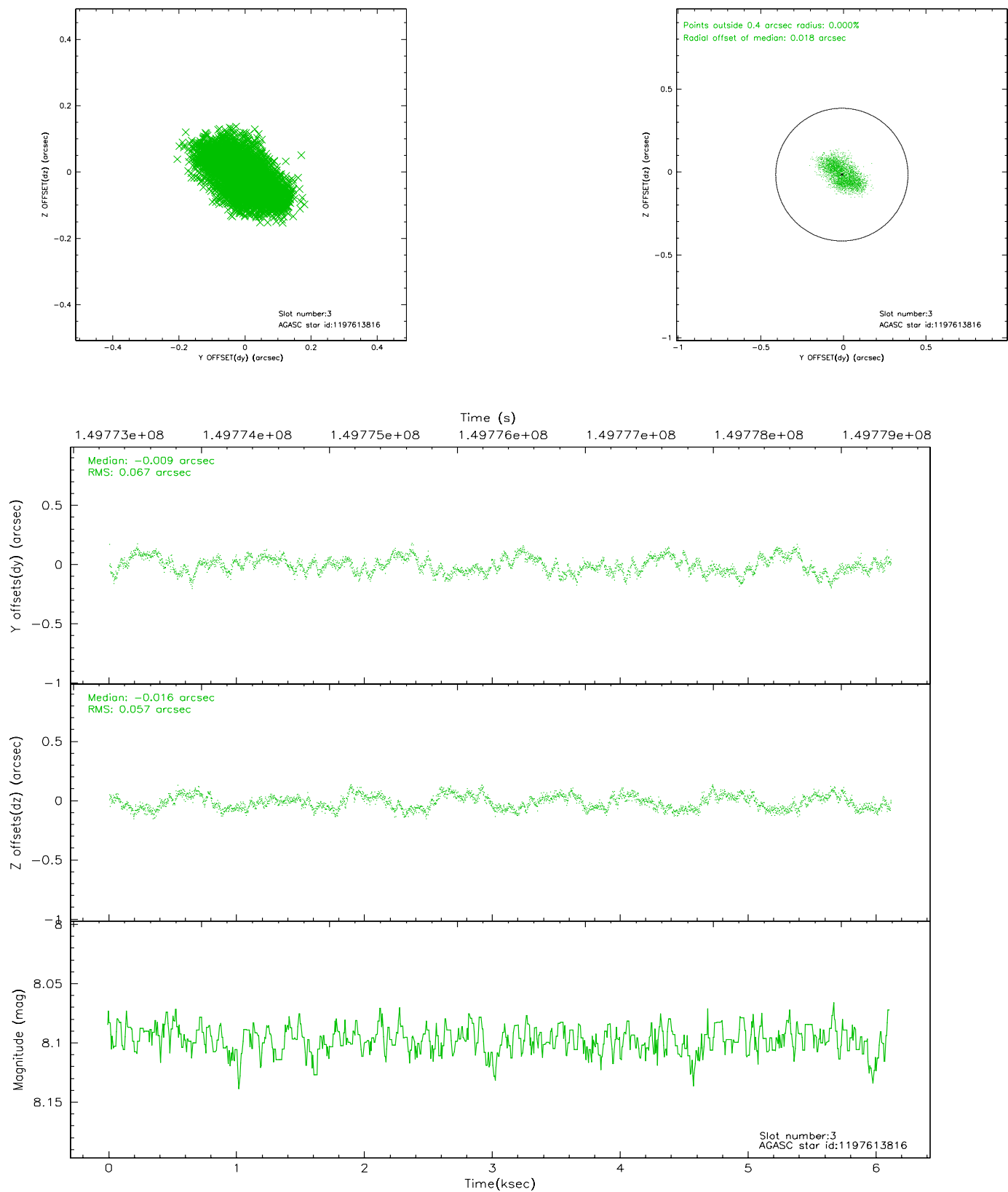
### Slot Statistics

slot	status	id	mag	n_pts	med_dy	med_dz	dr1	dr2	ra	dec	mean_y	mean_z
0	FID	ACIS-S-2	7.11	1492	-0.007	0.027	0.007	0.012	0.000000	0.000000	-755.68	-1728.30
1	FID	ACIS-S-4	7.20	1492	-0.045	-0.004	0.005	0.009	0.000000	0.000000	2157.12	179.15
2	FID	ACIS-S-5	7.23	1492	0.021	-0.014	0.006	0.011	0.000000	0.000000	-1807.25	173.91
3	GUIDE	1197613816	8.10	2982	-0.009	-0.016	0.095	0.147	5.181461	-71.977993	-914.53	411.08
4	GUIDE	1197615656	8.65	2974	0.073	-0.018	0.077	0.127	6.909375	-71.882658	1011.13	772.94
5	GUIDE	1197999176	8.85	2983	-0.084	-0.059	0.076	0.122	6.259352	-72.617840	300.10	-1874.15
6	GUIDE	1197607928	9.62	2981	0.106	0.081	0.111	0.188	7.837743	-72.165759	2030.30	-259.54
7	GUIDE	1197619752	9.98	2973	-0.086	-0.000	0.196	0.292	4.510721	-71.856694	-1675.90	825.20

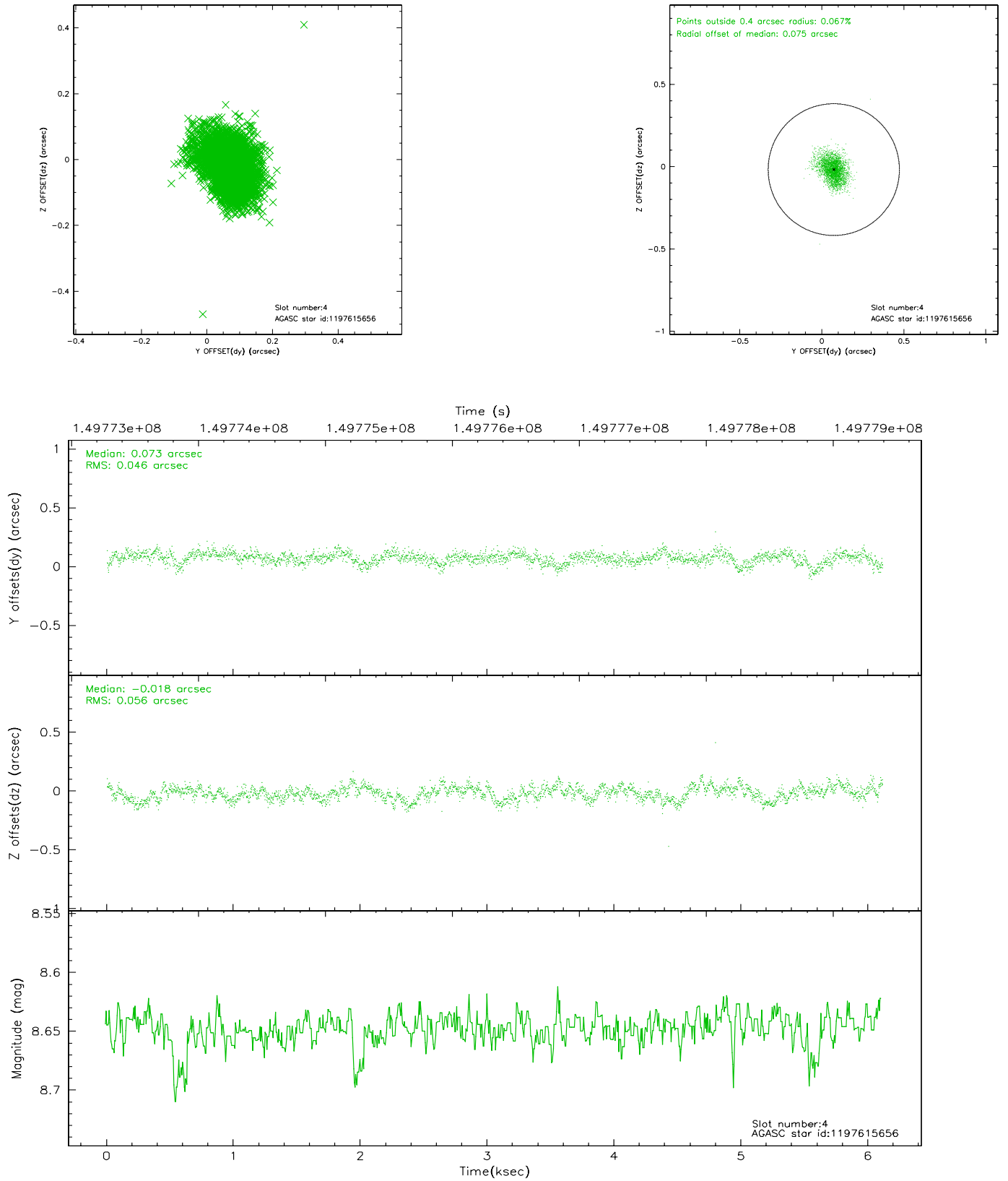


## 2.4 Star Slots

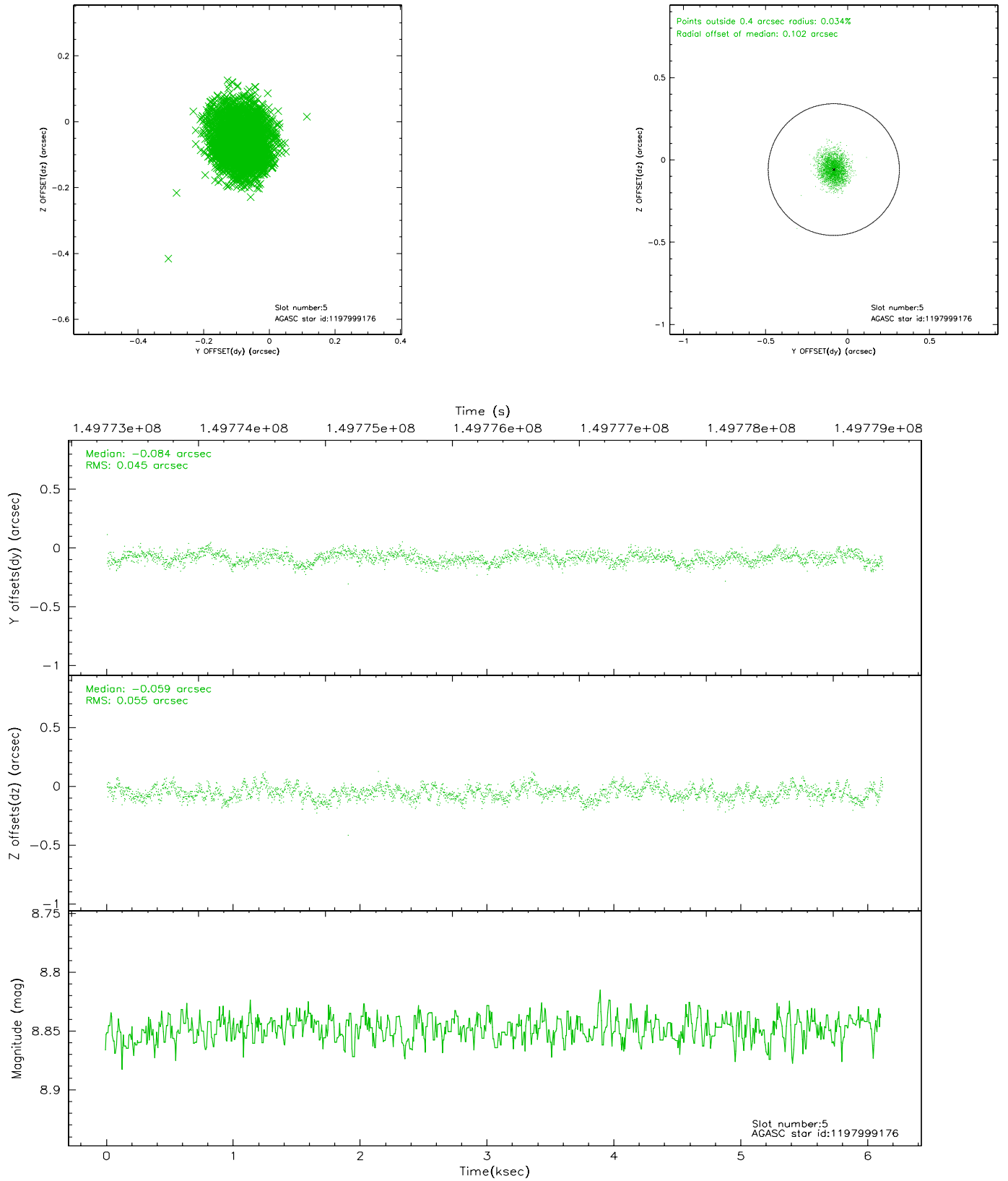
### 2.4.1 Slot 3



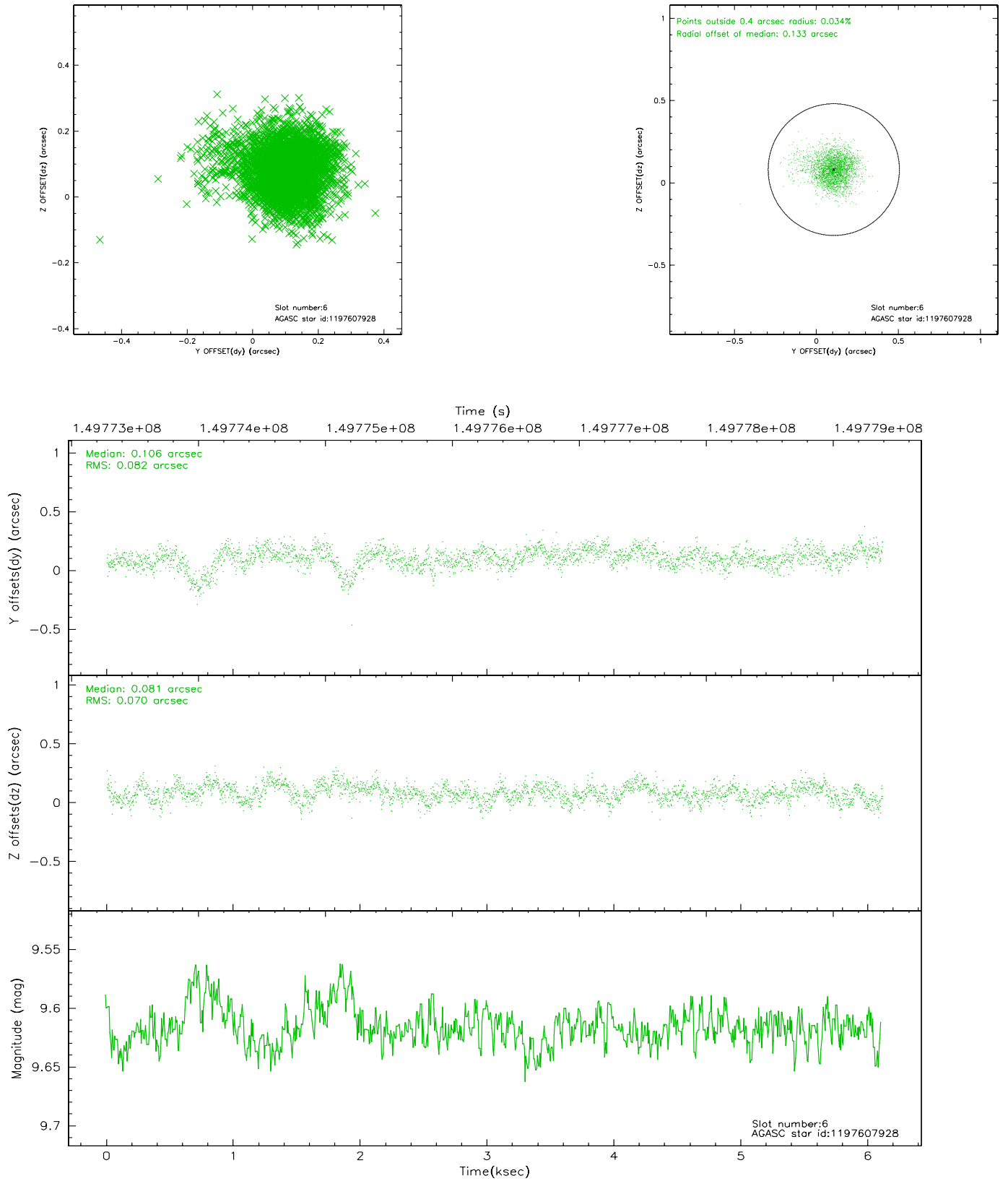
## 2.4.2 Slot 4



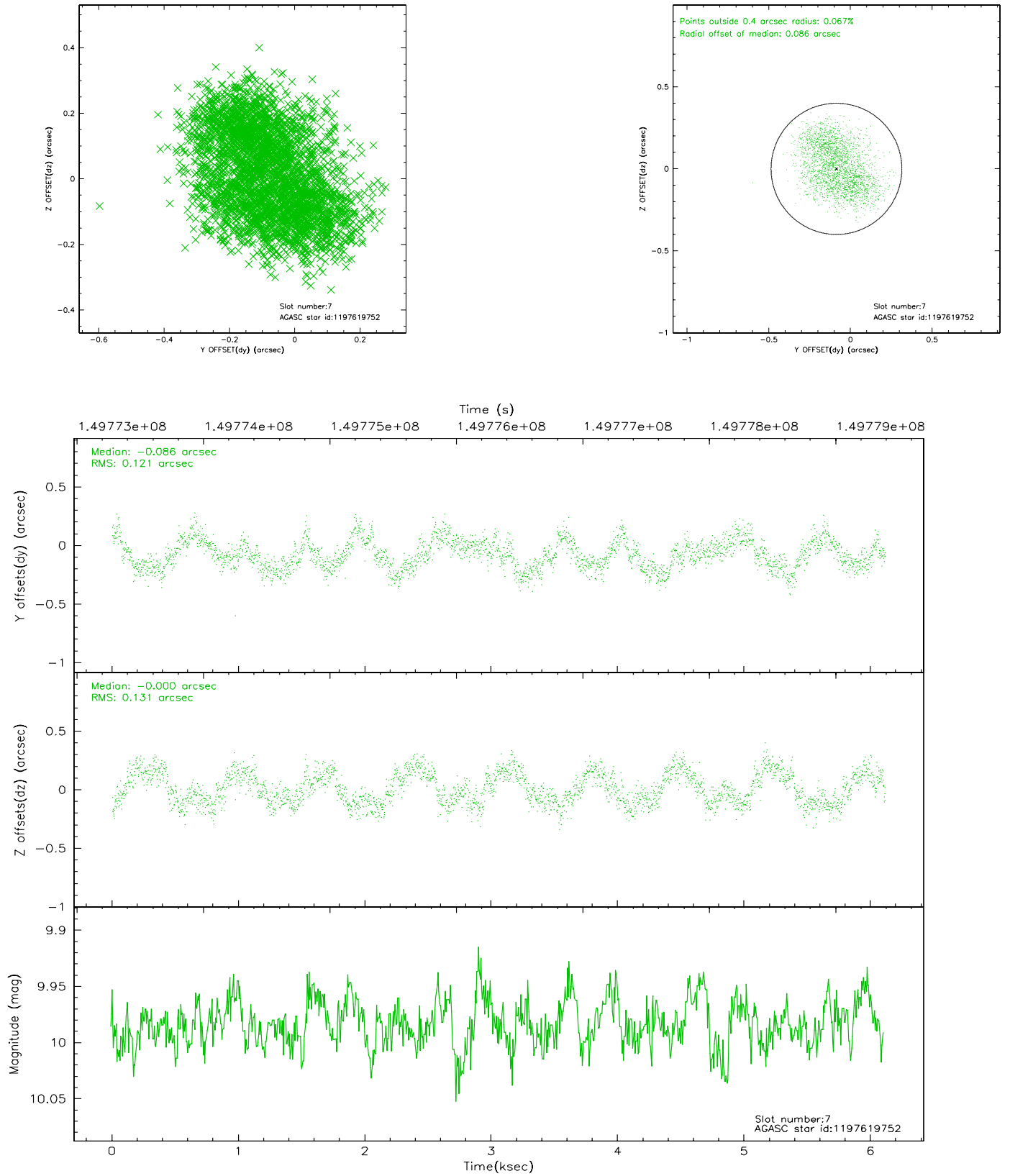
### 2.4.3 Slot 5



## 2.4.4 Slot 6

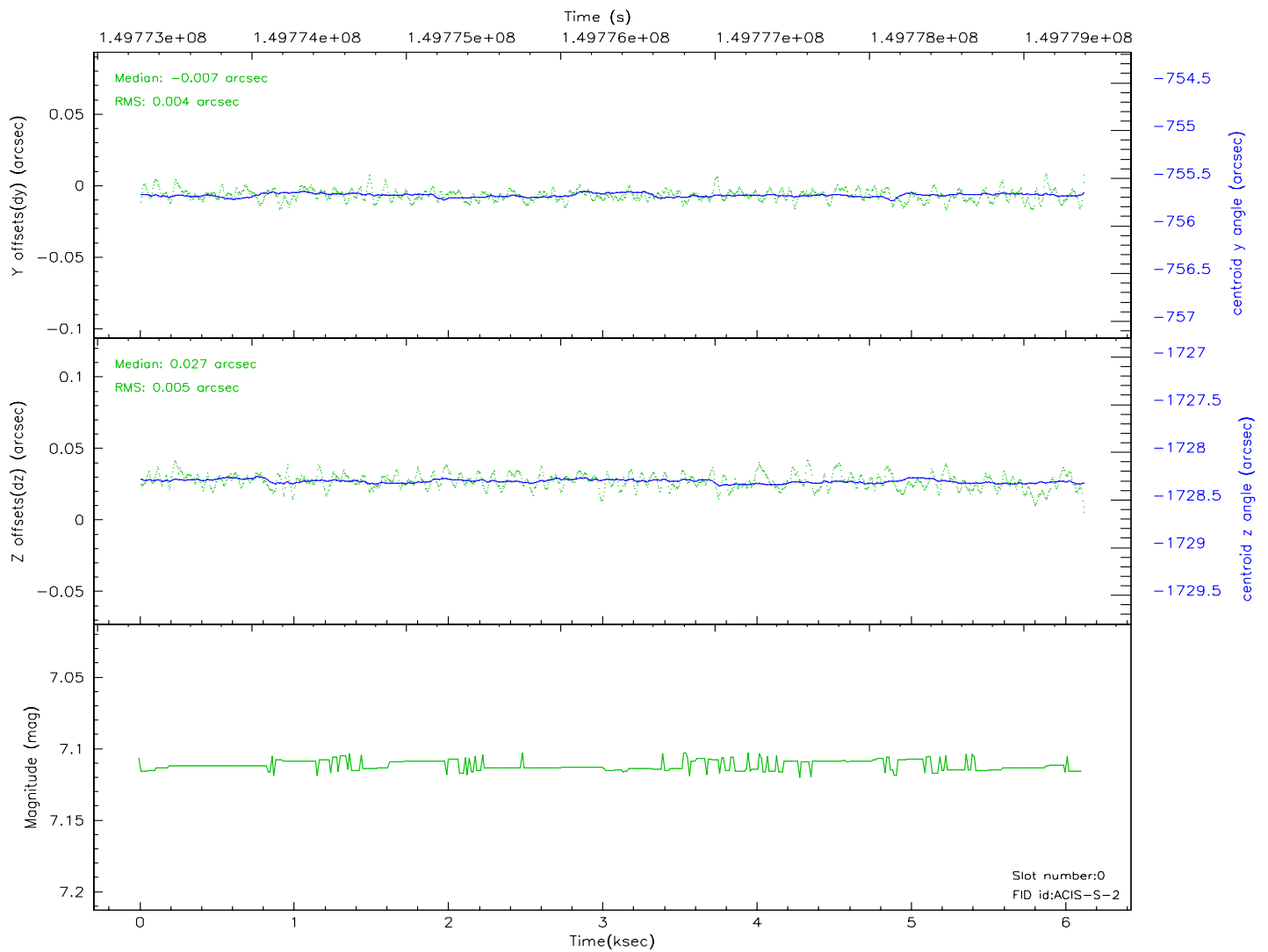
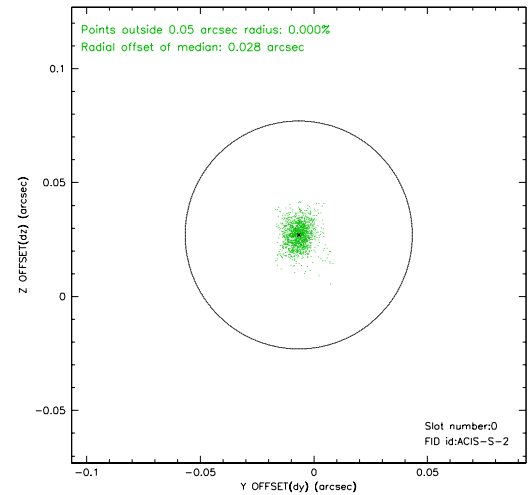
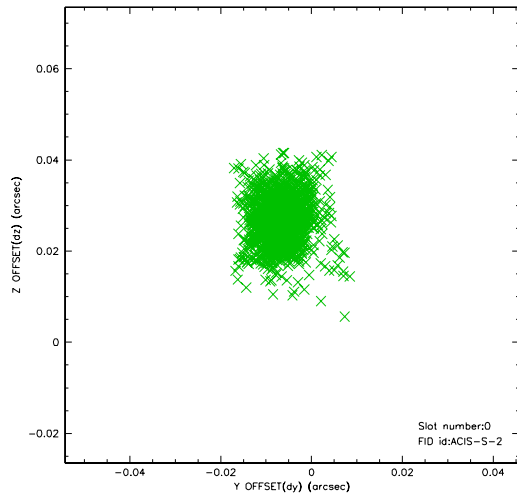


## 2.4.5 Slot 7

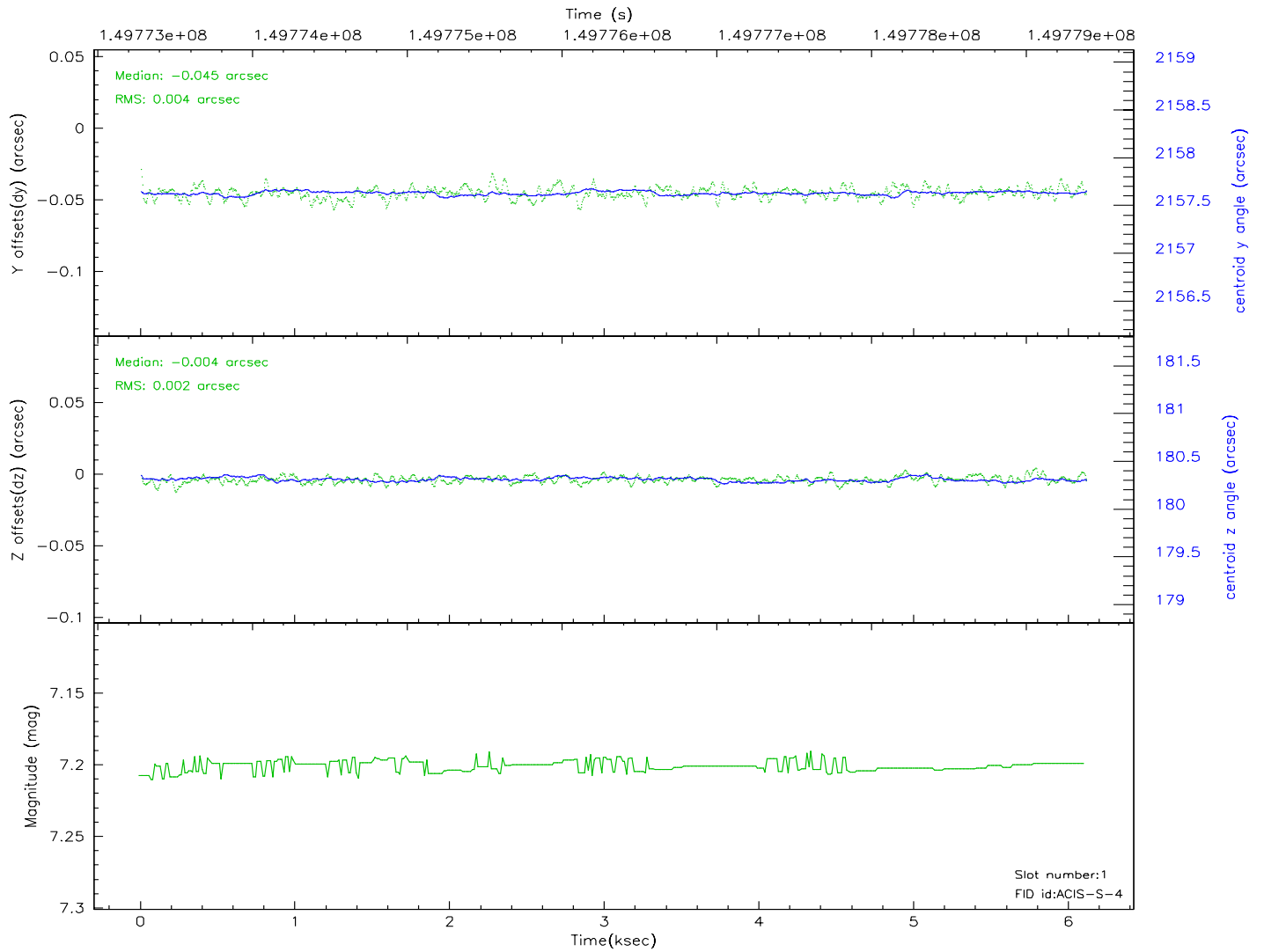
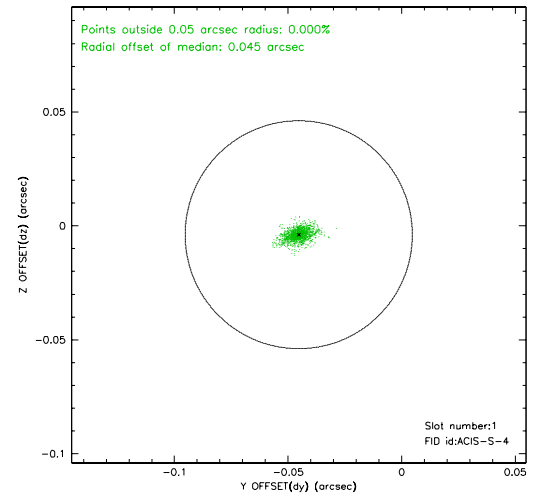
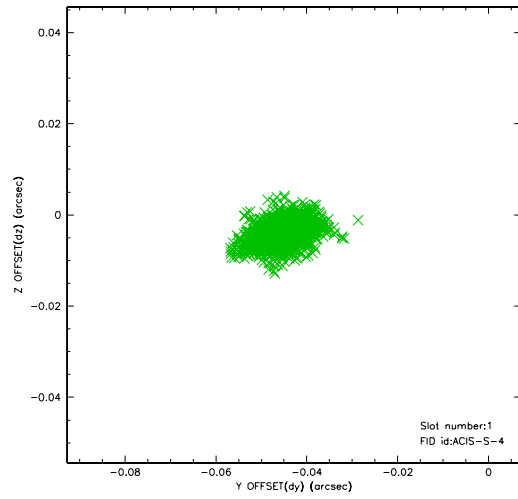


## 2.5 FID Slots

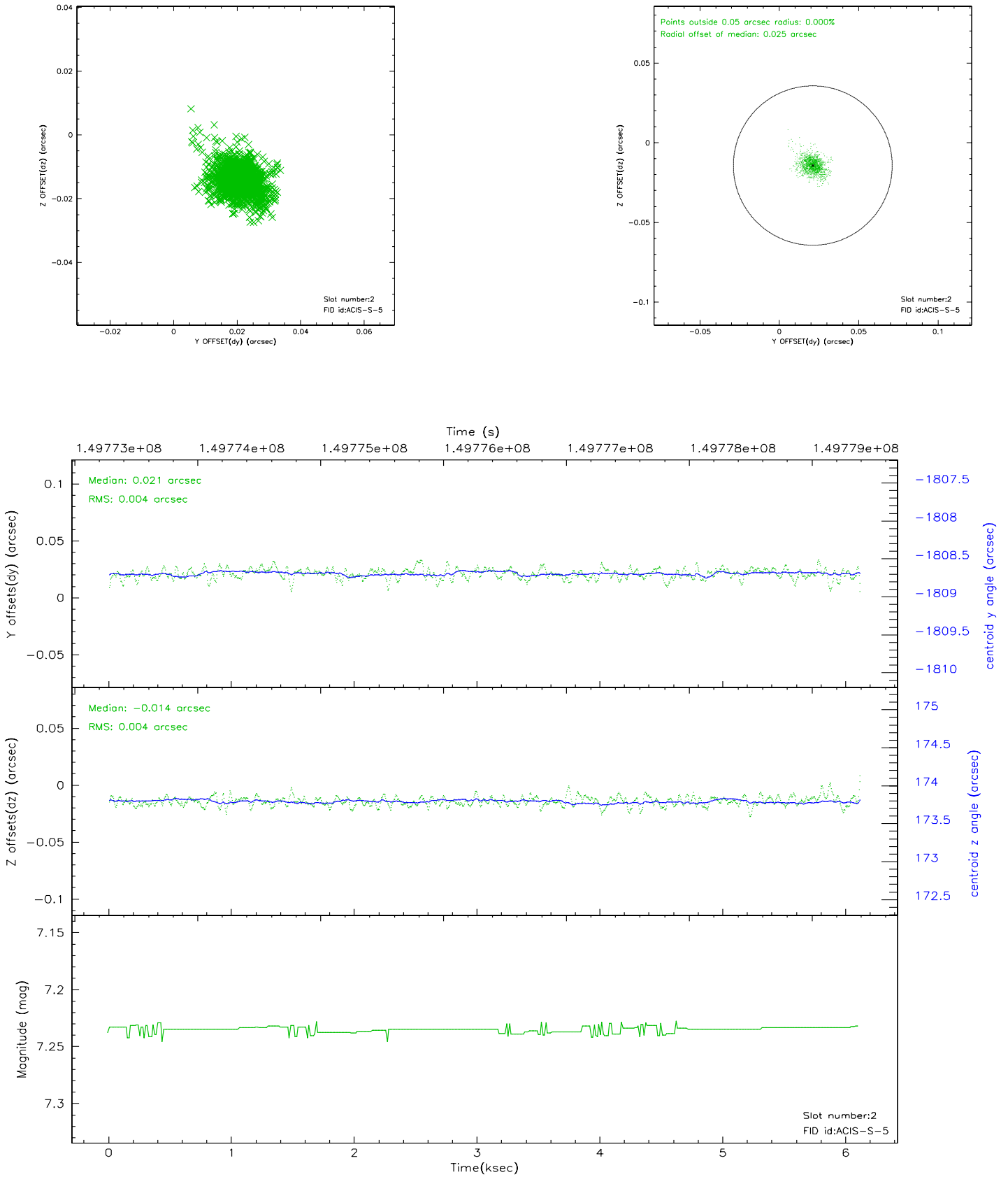
### 2.5.1 Slot 0



## 2.5.2 Slot 1



### 2.5.3 Slot 2





### 3 Point Sources

2.16 arcmin



## A Summary

### A.1 Status

V&V Scientist	Jen Lauer
V&V Date (YYYY-MM-DD)	2006.10.05
V&V Edition	1
V&V Disposition and Status	OK
V&V Charge Time	5.58

### A.2 Comments

Window constraint met.