

V&V Reference Report

L2 ASCDS Version : 8.4.5

Observation 2751 - L2 Version 4
Chandra X-Ray Center

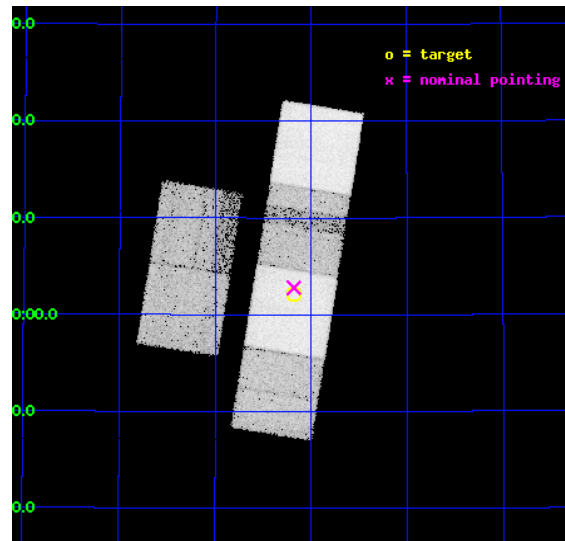
L2 Processing Date : Nov 8 2012

Contents

1	Front	2
2	OBI	3
2.1	OBI	3
2.1.1	Images	3
2.1.2	Bias	3
2.1.3	Parameters	4
2.1.4	Events	4
2.2	Compared Parameters	5
2.3	Aspect	6
2.4	Star Slots	9
2.4.1	Slot 3	9
2.4.2	Slot 4	10
2.4.3	Slot 5	11
2.4.4	Slot 6	12
2.4.5	Slot 7	13
2.5	FID Slots	14
2.5.1	Slot 0	14
2.5.2	Slot 1	15
2.5.3	Slot 2	16
A	Summary	17
A.1	Status	17
A.2	Comments	17

1 Front

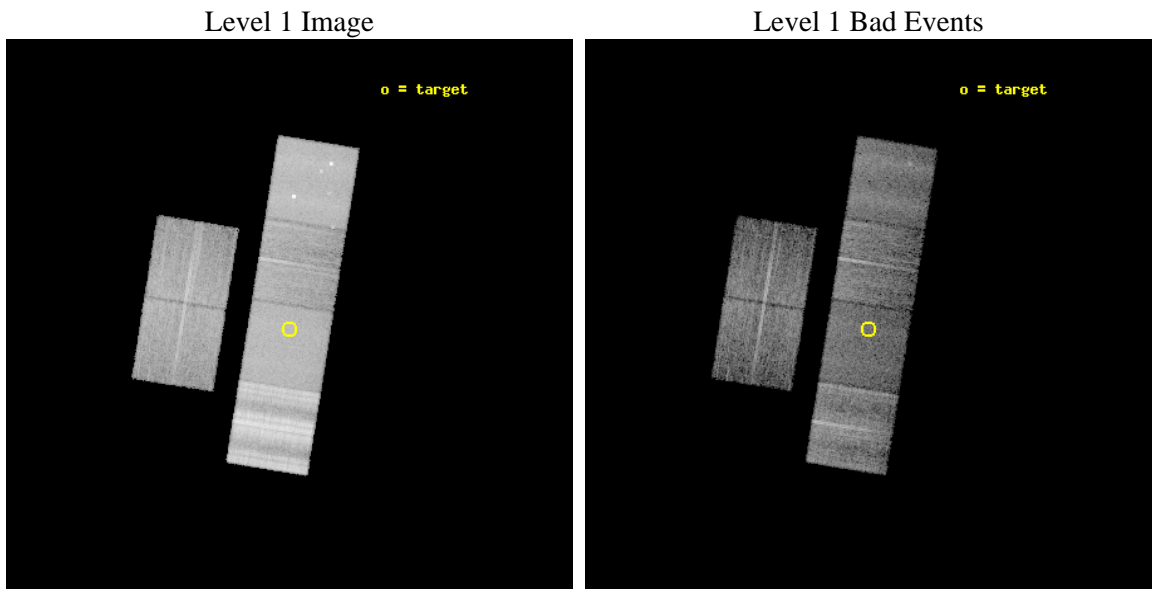
seq_num	400231	Sequence number
obs_id	2751	Observation id
title	MULTIWAVELENGTH OBSERVATIONS OF THE BLACK HOLE XTE J1118+480 IN QUIESCENCE	Proposal title
observer	Dr. Stephen Murray	Principal investigator
object	XTE J1118+480	Source name
dtcycle	0	
cycle	P	events from which exps? Prim/Second/Both
ra_targ	169.545	Observer's specified target RA [deg]
dec_targ	48.03675	Observer's specified target Dec [deg]
ra_nom	169.54528397121	Nominal RA [deg]
dec_nom	48.046473675252	Nominal Dec [deg]
roll_nom	99.130994924178	Nominal Roll [deg]
revision	4	Processing version of data
ontime	10418.162522435	Sum of GTIs [s]
livetime	10286.241475512	Livetime [s]
ontime2	7049.2109365165	Sum of GTIs [s]
ontime3	7536.810615778	Sum of GTIs [s]
ontime5	10418.121482432	Sum of GTIs [s]
ontime6	7484.9959719181	Sum of GTIs [s]
ontime7	10418.162522435	Sum of GTIs [s]
ontime8	8415.0740202665	Sum of GTIs [s]
l2events	214681	Number of level 2 events



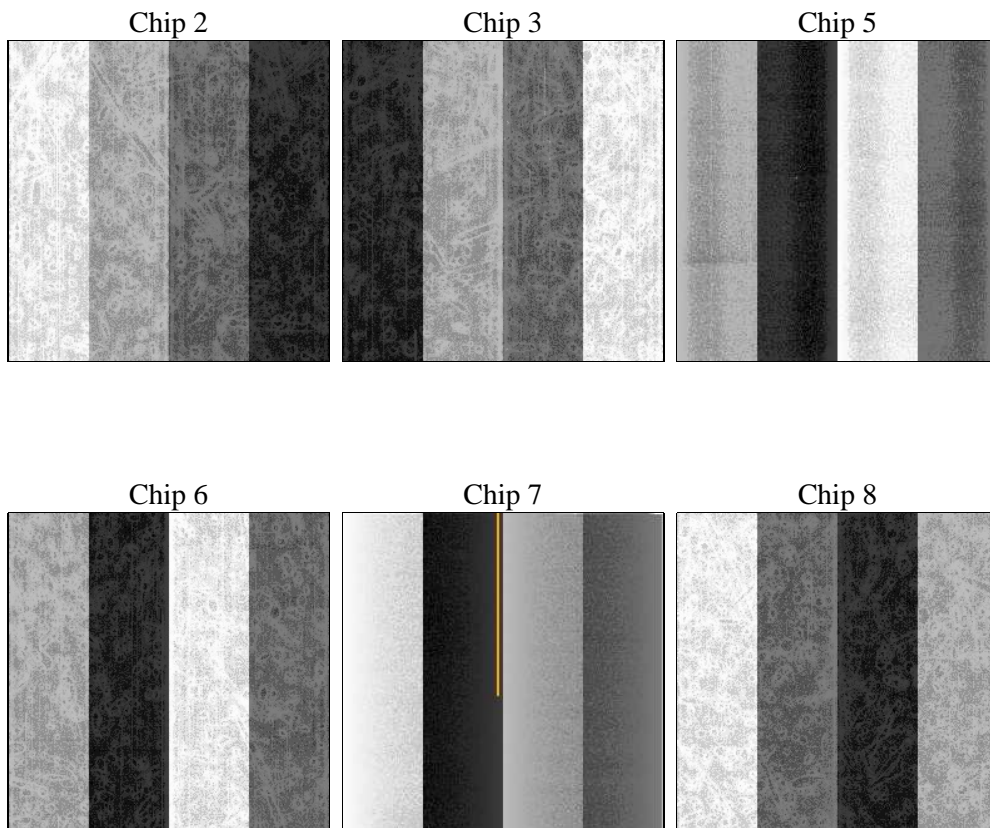
2 OBI

2.1 OBI

2.1.1 Images



2.1.2 Bias



2.1.3 Parameters

obi_num	0	Obi number	sched_exp_time	31200.000000	[s] Scheduled observation exposure time
ascdsver	8.4.5	Processing system revision	ontime	10418.162522435	Sum of GTIs [s]
caldsver	4.5.2	 	ontime2	7049.2109365165	Sum of GTIs [s]
date	2012-11-08T19:53:09	Date and time of file creation	ontime3	7536.810615778	Sum of GTIs [s]
revision	4	Processing version of data	ontime5	10418.121482432	Sum of GTIs [s]
			ontime6	7484.9959719181	Sum of GTIs [s]
			ontime7	10418.162522435	Sum of GTIs [s]
			ontime8	8415.0740202665	Sum of GTIs [s]
			l1events	752010	Number of level 1 events

2.1.4 Events

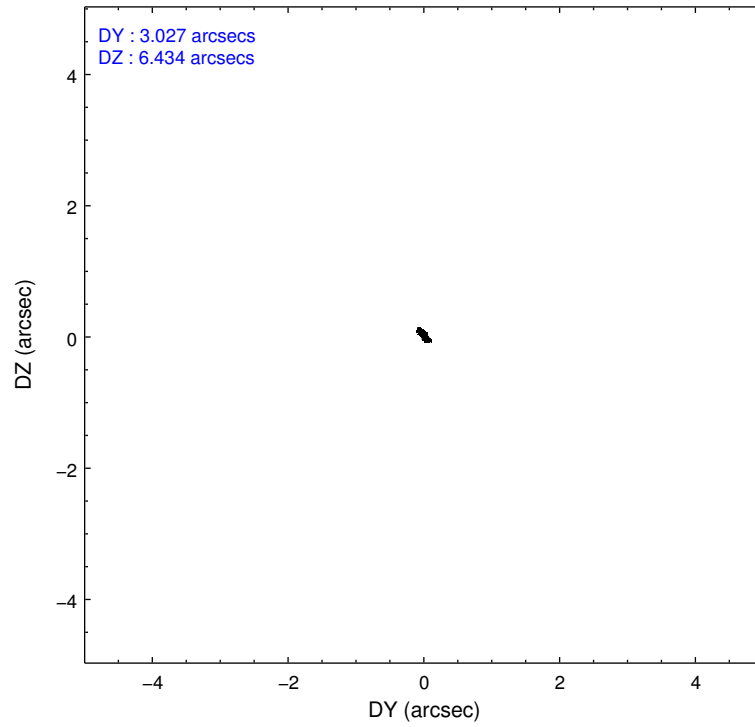
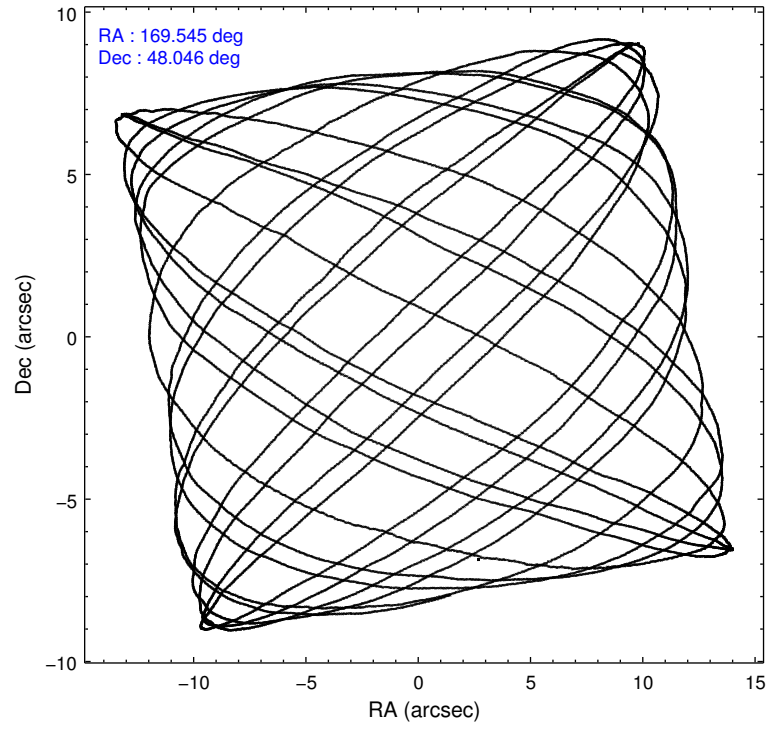
	ccd 2	ccd 3	ccd 5	ccd 6	ccd 7	ccd 8		ccd 2	ccd 3	ccd 5	ccd 6	ccd 7	ccd 8
level 1 events	81315	81696	145956	87895	124799	230349	grade 0 events	8091	7335	13320	9471	7508	48922
rejected events	63098	63380	64141	67148	53832	84770		9%	8%	9%	10%	6%	21%
rejected %	77%	77%	43%	76%	43%	36%	grade 1 events	55	41	449	55	143	385
								0%	0%	0%	0%	0%	0%
							grade 2 events	5239	5928	23678	6440	14142	21159
								6%	7%	16%	7%	11%	9%
							grade 3 events	630	755	4965	809	5979	24987
								0%	0%	3%	0%	4%	10%
							grade 4 events	1023	836	4877	823	6027	22154
								1%	1%	3%	0%	4%	9%
							grade 5 events	1733	1926	8505	2109	8785	4452
								2%	2%	5%	2%	7%	1%
							grade 6 events	3298	3534	35185	3283	37470	28949
								4%	4%	24%	3%	30%	12%
							grade 7 events	61246	61341	54977	64905	44745	79341
								75%	75%	37%	73%	35%	34%

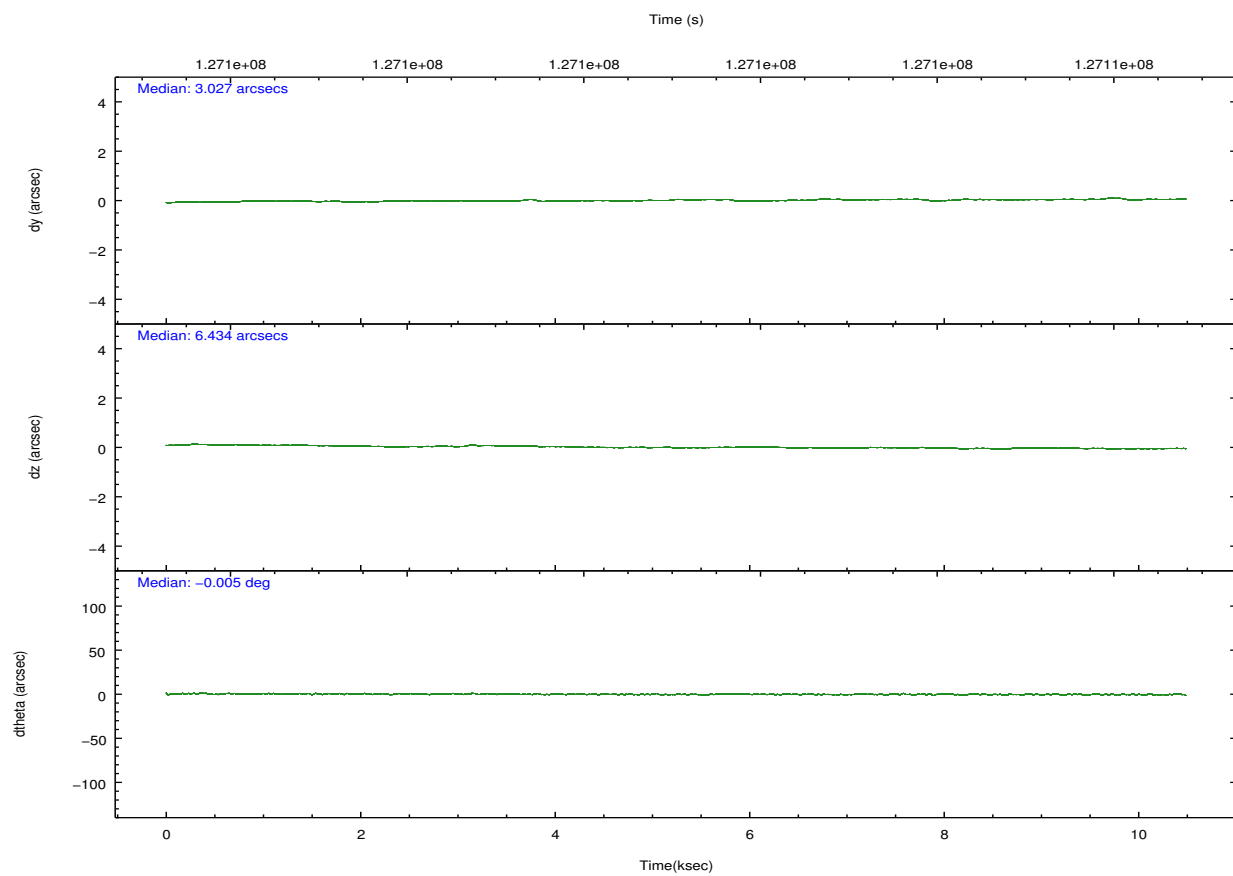
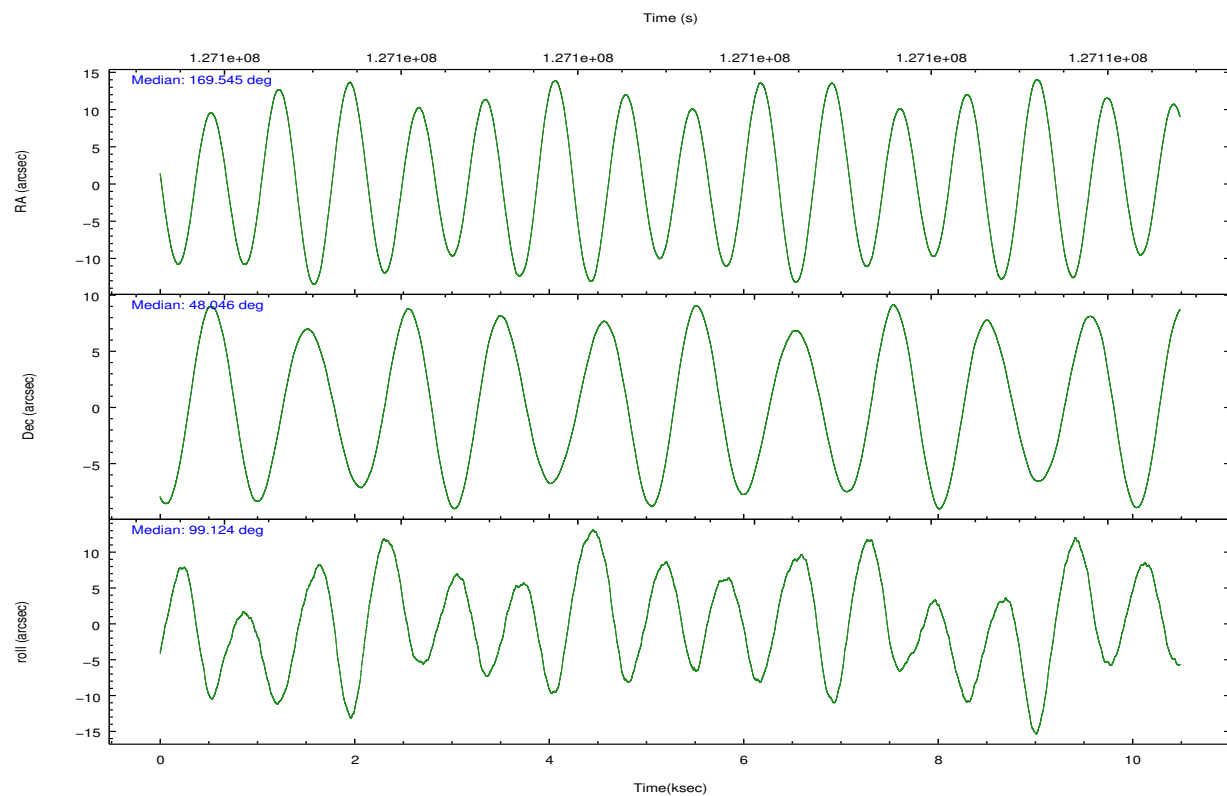
2.2 Compared Parameters

Parameter	Planned	Actual
Instrument	ACIS	ACIS
Detector	ACIS-235678	ACIS-235678
Grating	NONE	NONE
Data mode	VFAINT	VFAINT
Observation mode	POINTING	POINTING
[deg] Pointing RA	169.571365	169.545283971206
[deg] Pointing Dec	48.025530	48.04647367525244
[deg] Pointing Roll	98.954974	99.1309949241775
[mm] SIM focus pos	-0.6828225247311905	-0.6828225247311905
[mm] SIM defocus	0.001444942264670179	0.001444942264670179
[mm] SIM translation stage pos	-190.1400660498719	-190.1400660498719
[mm] SIM translation stage offset	0.007542945904702947	0.007542945904702947
[s] Observation start time (MET)	127095798.184000	127095798.184
Observation start date	2002-01-11T00:22:14	2002-01-11T00:23:18
[s] Observation end time (MET)	127106286.900000	127106286.9
Observation end date	2002-01-11T03:18:07	2002-01-11T03:18:06
Read mode	TIMED	TIMED

Parameter	Planned	Actual
Obspar format version number	7	7
Obspar file type	PREDICTED	ACTUAL
Obspar update status	OVERRIDE	OVERRIDE
Number of optional ACIS chips dropped	0	0
On-chip summing requested	N	N
Subarray requested	NONE	NONE
Alternating exposures requested	N	N
 	3.2	3.2

2.3 Aspect



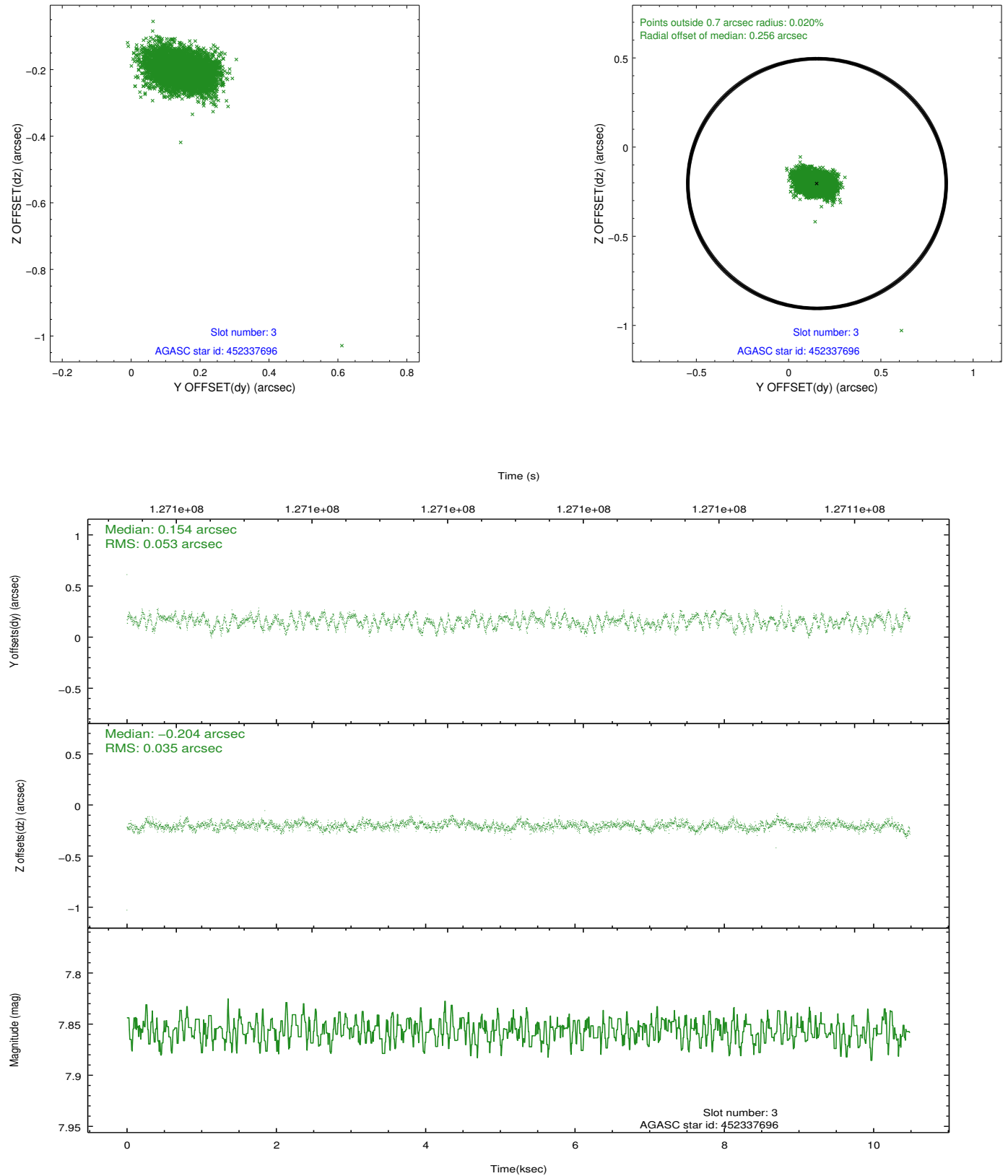


Slot Statistics

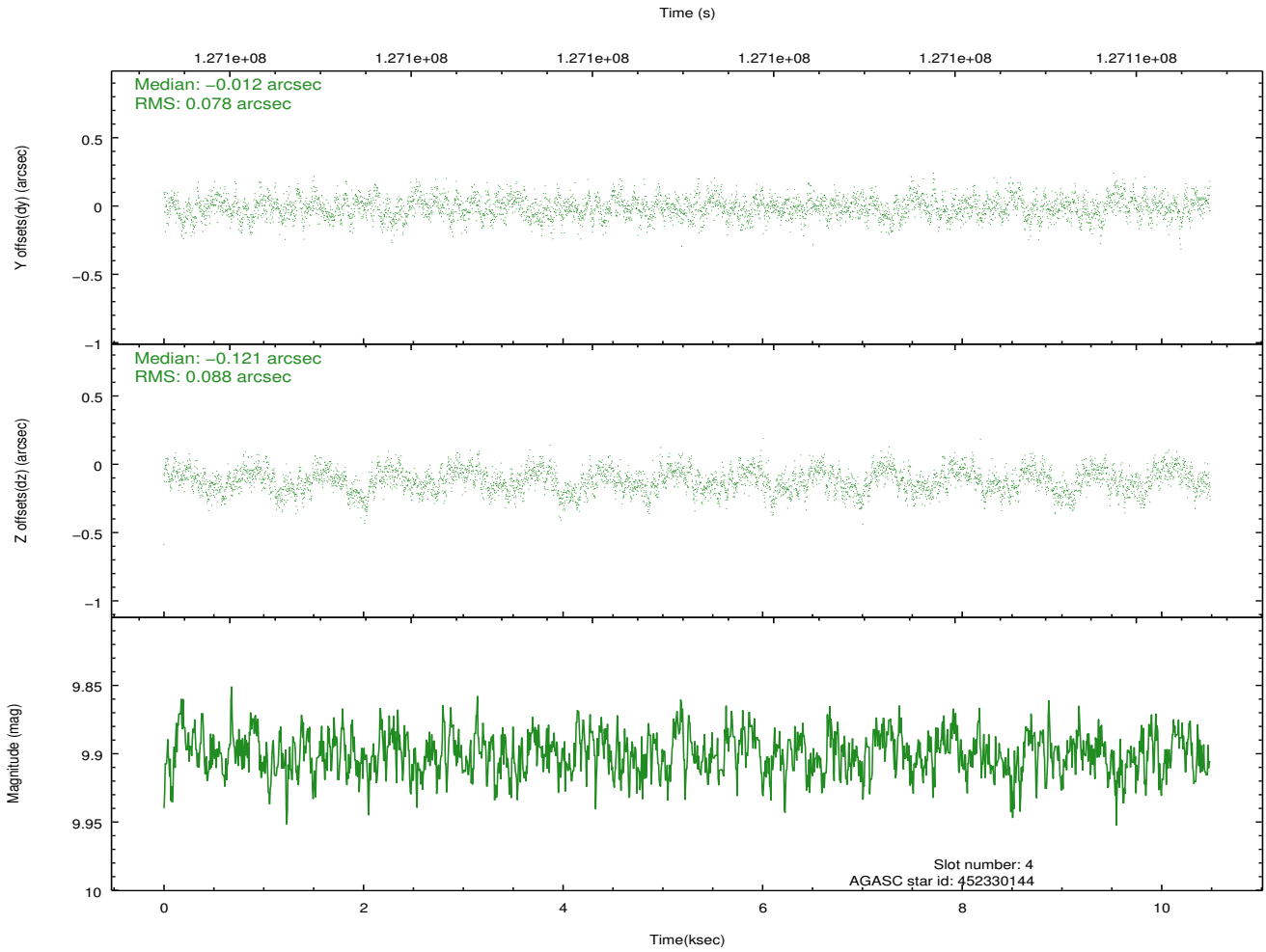
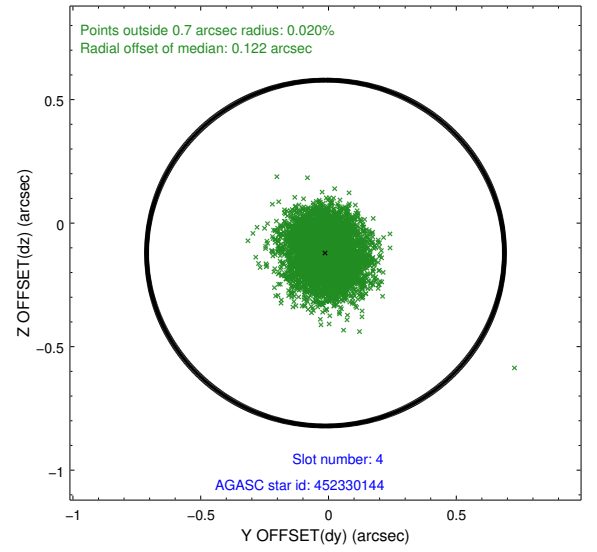
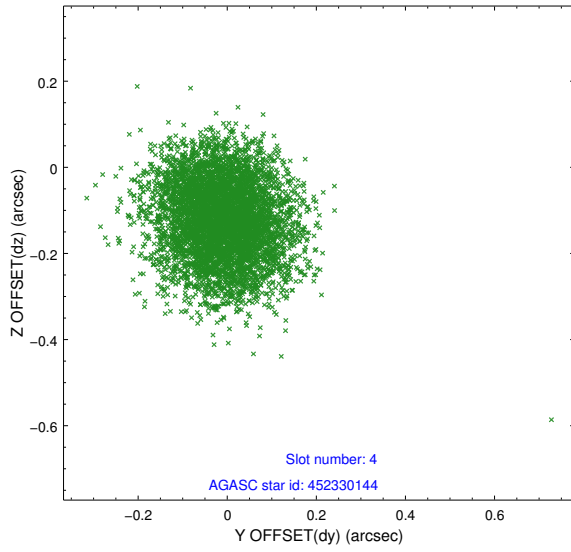
slot	status	id	mag	n_pts	med_dy	med_dz	dr1	dr2	ra	dec	mean_y	mean_z
0	FID	ACIS-S-2	7.12	2558	-0.026	0.008	0.007	0.011	0.000000	0.000000	-755.67	-1727.60
1	FID	ACIS-S-4	7.20	2557	-0.022	0.010	0.006	0.012	0.000000	0.000000	2157.35	180.42
2	FID	ACIS-S-5	7.24	2558	0.017	-0.010	0.007	0.012	0.000000	0.000000	-1807.86	174.57
3	GUIDE	452337696	7.86	5117	0.154	-0.204	0.066	0.108	168.869582	47.479497	-1667.65	1990.13
4	GUIDE	452330144	9.90	5110	-0.012	-0.121	0.126	0.197	169.116291	48.616983	2275.43	737.55
5	GUIDE	452329856	10.10	5112	-0.209	0.362	0.132	0.213	170.088304	48.576176	1771.88	-1525.73
6	GUIDE	452335192	9.87	5087	0.080	0.054	0.126	0.211	170.184144	47.953835	-477.63	-1421.40
7	GUIDE	452330336	9.72	5115	-0.016	-0.093	0.114	0.180	168.787124	48.590922	2311.26	1525.35

2.4 Star Slots

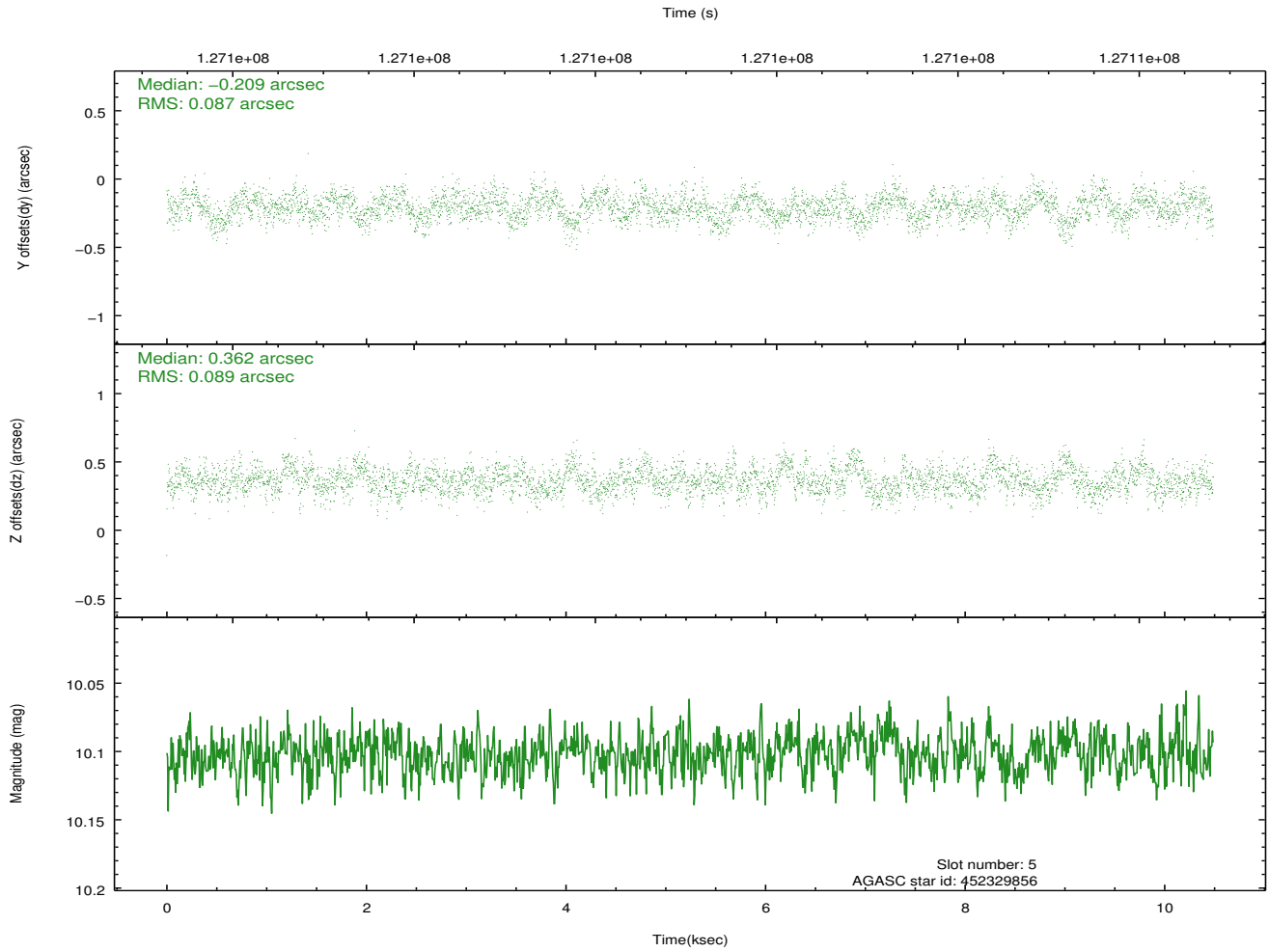
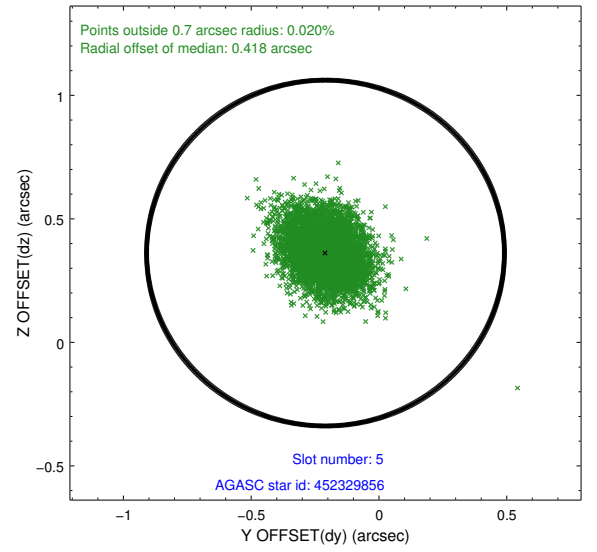
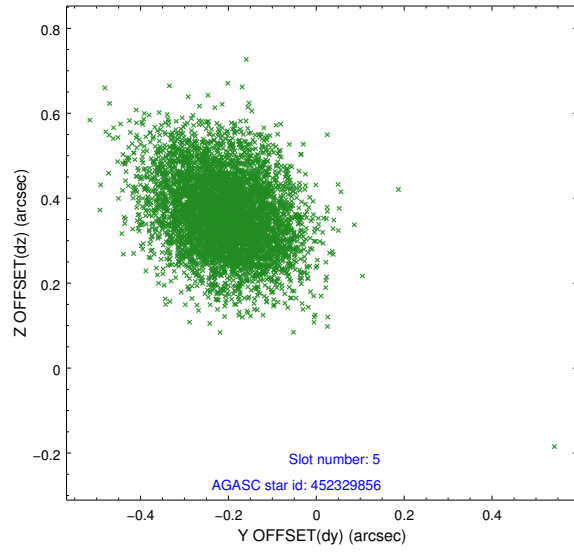
2.4.1 Slot 3



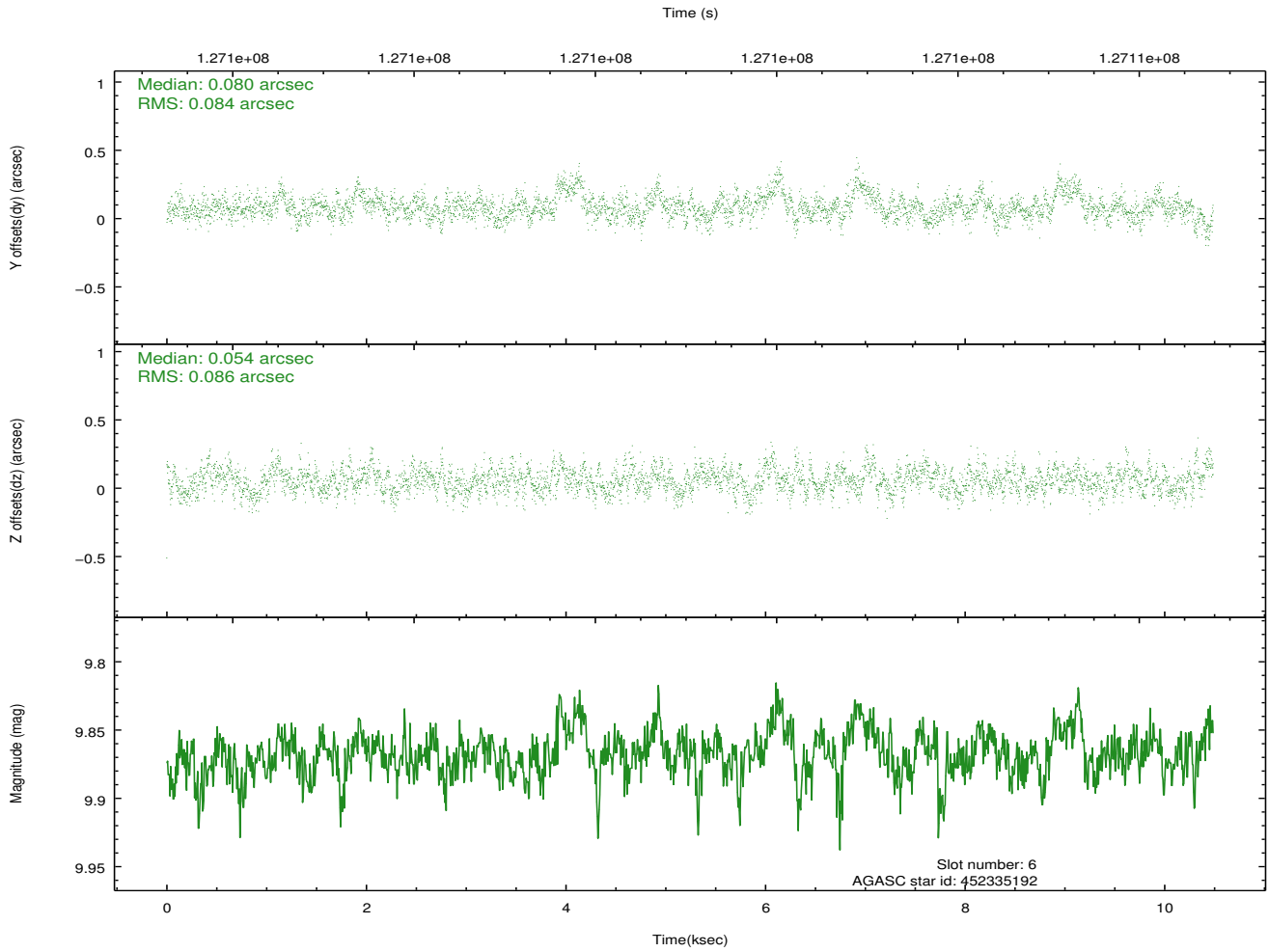
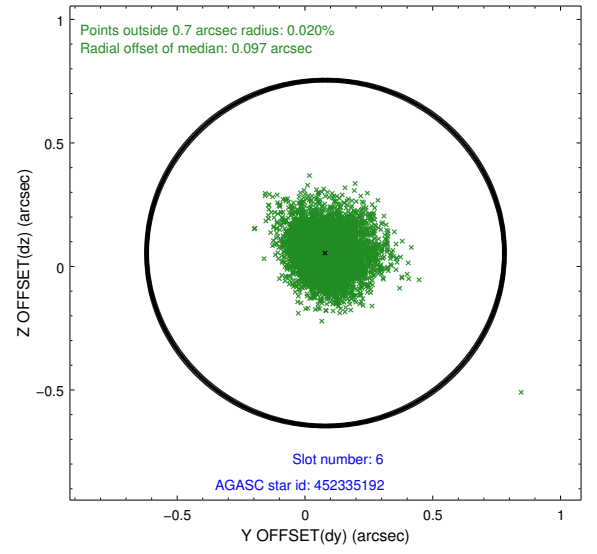
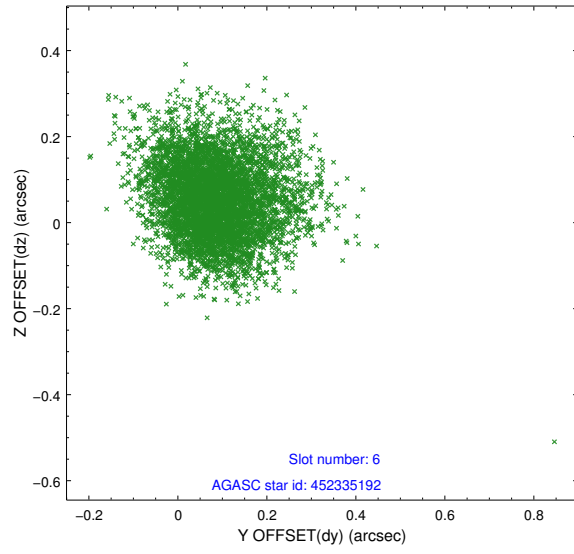
2.4.2 Slot 4



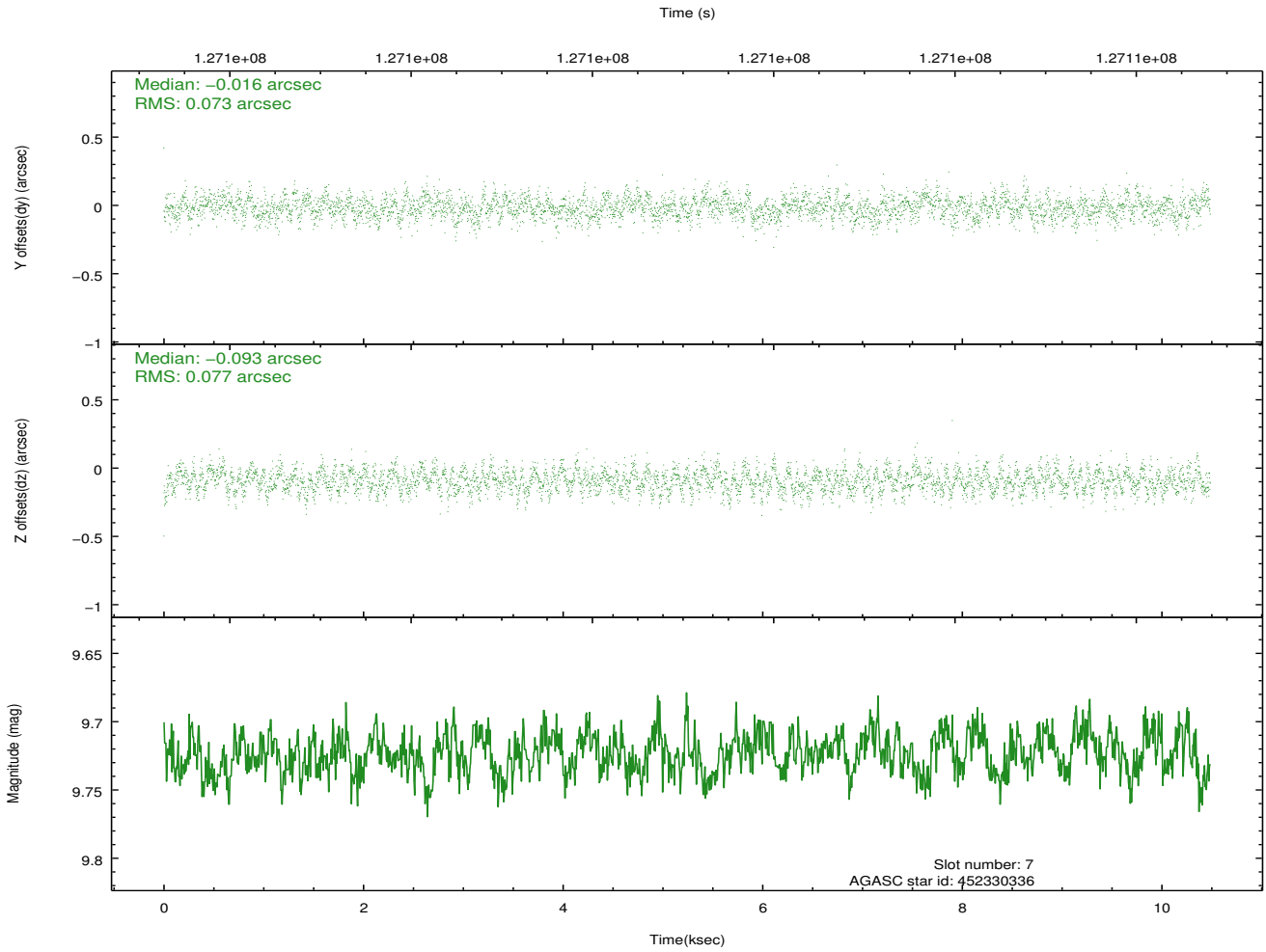
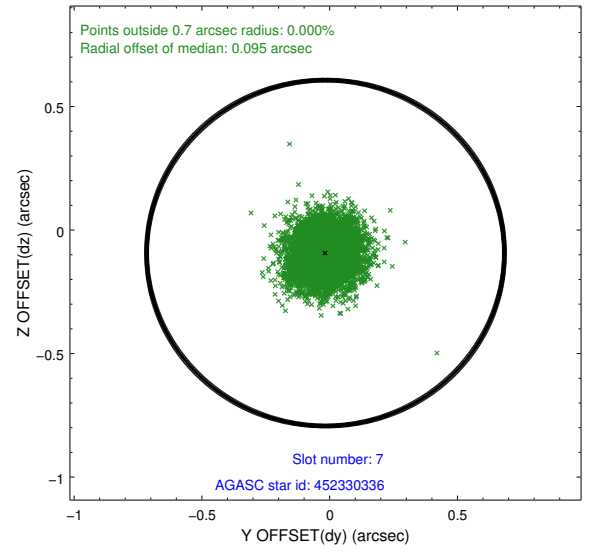
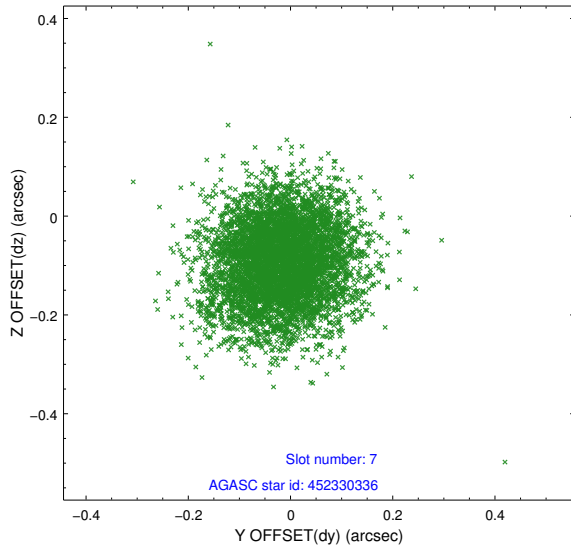
2.4.3 Slot 5



2.4.4 Slot 6

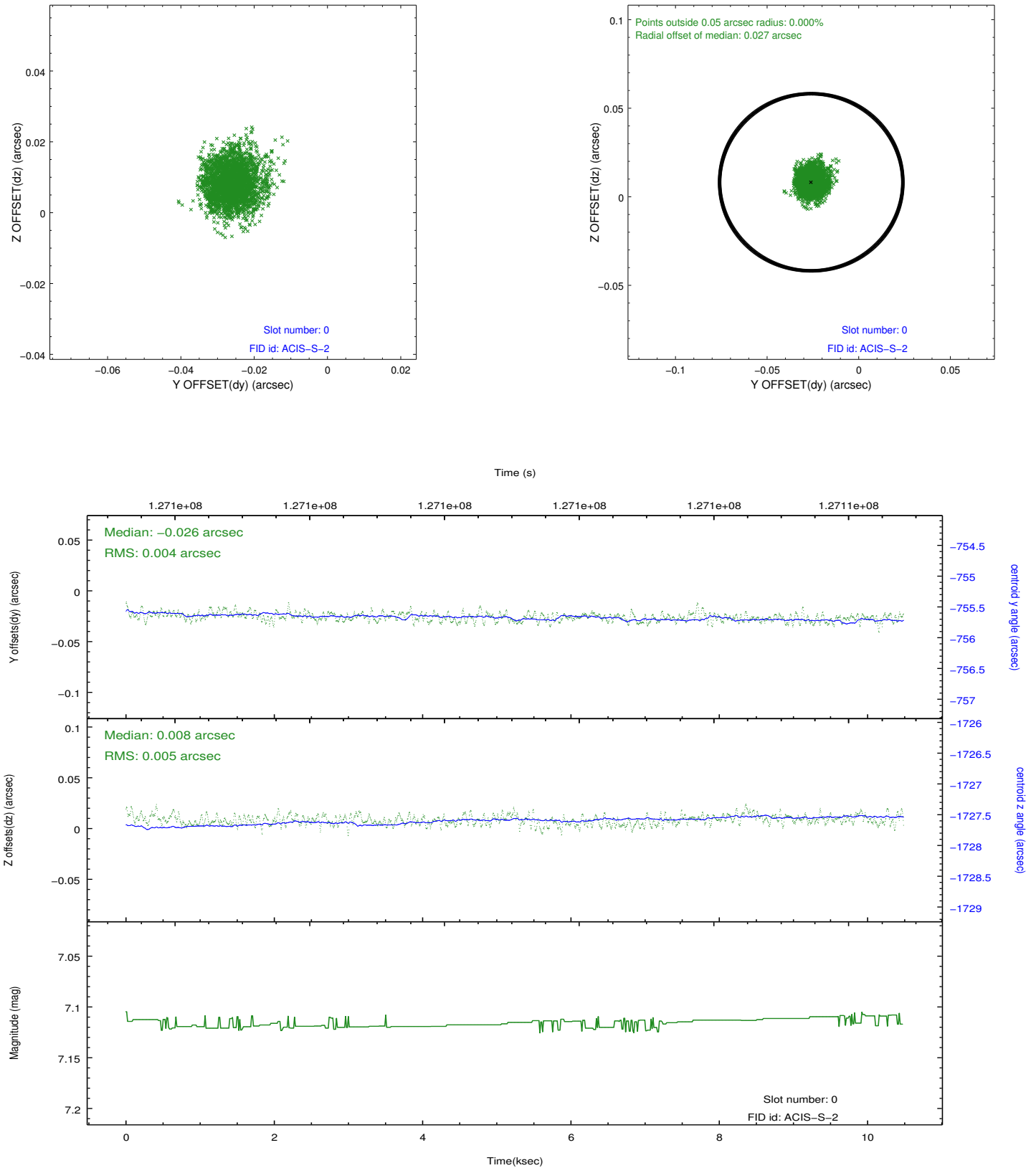


2.4.5 Slot 7

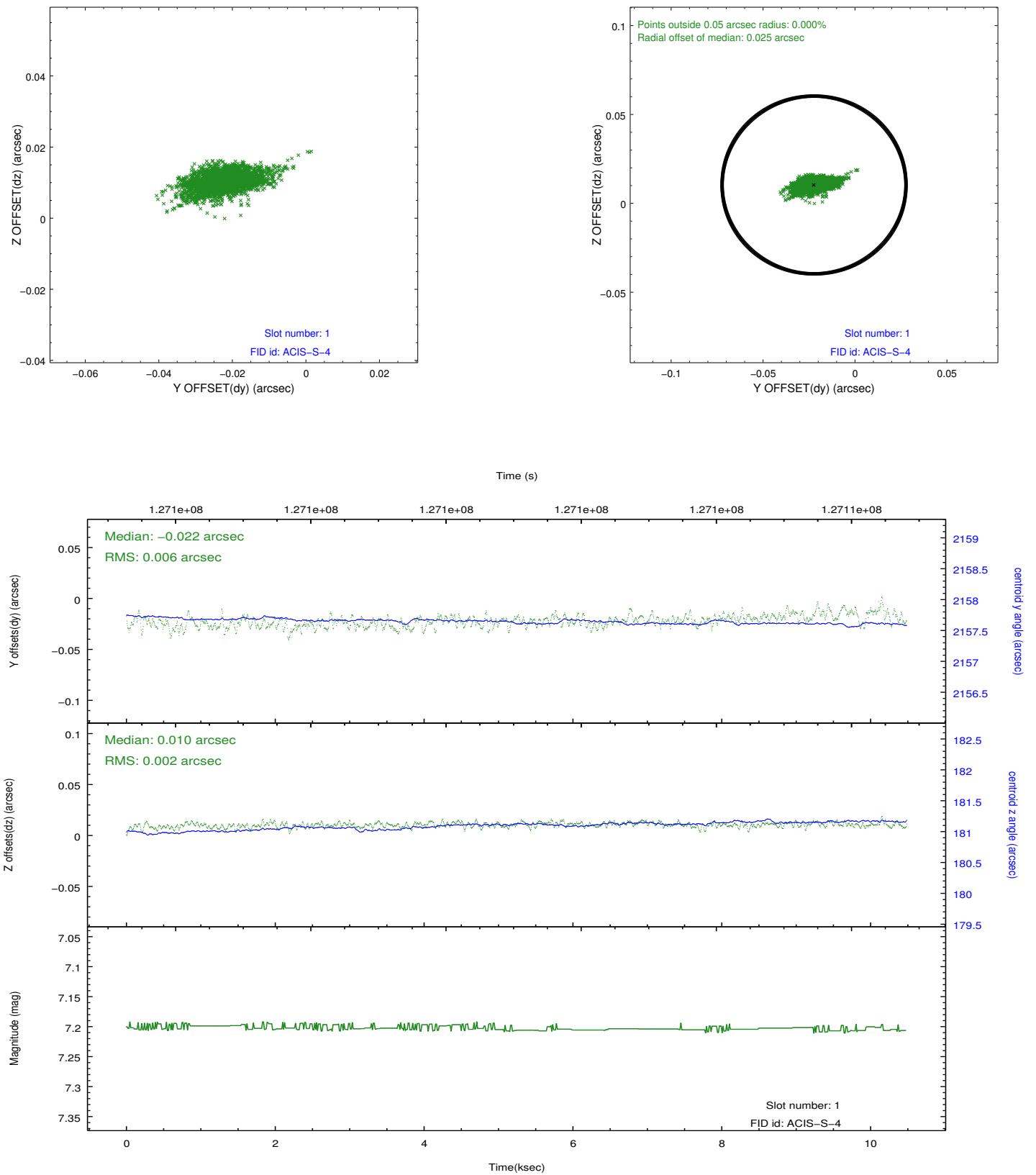


2.5 FID Slots

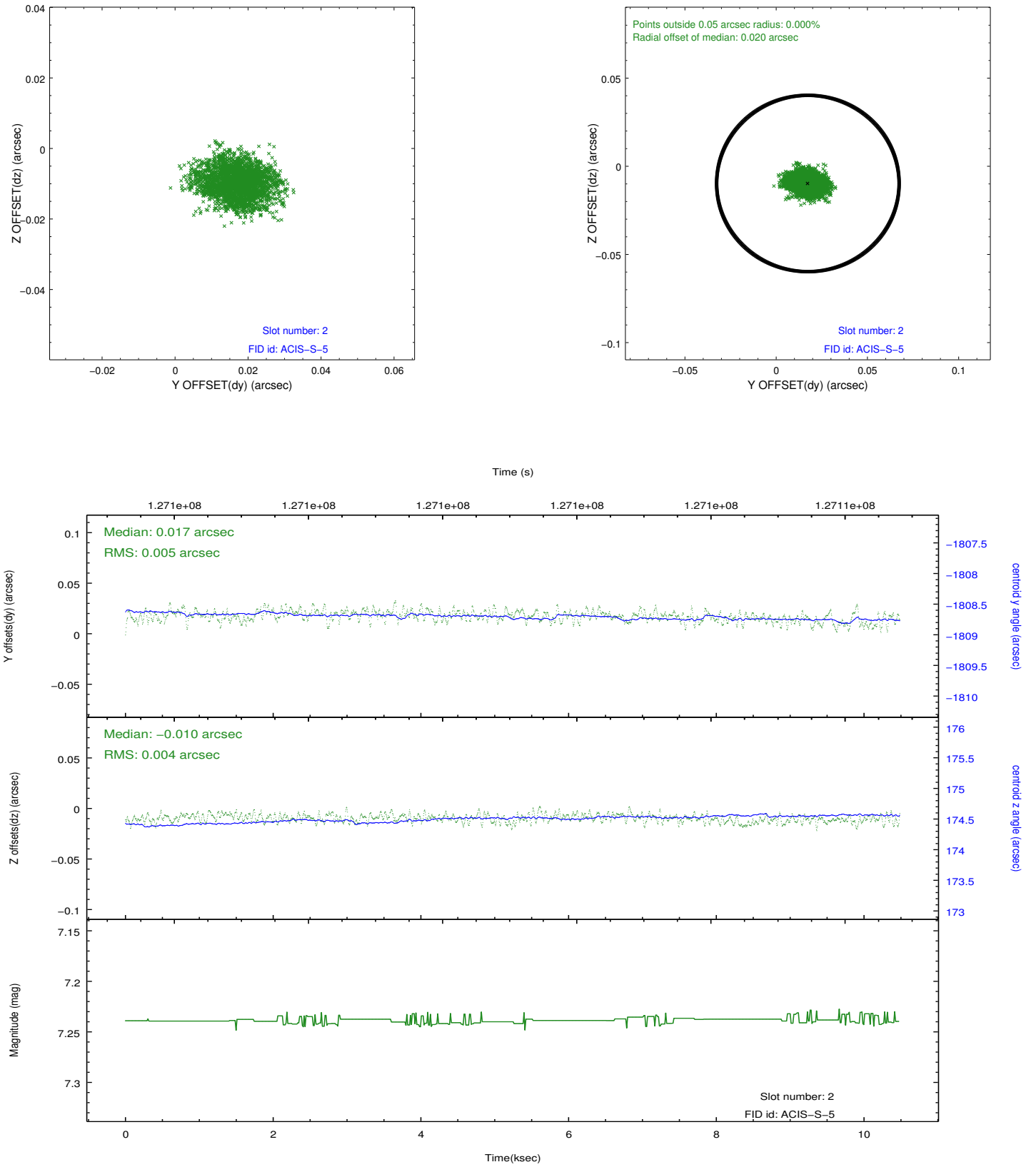
2.5.1 Slot 0



2.5.2 Slot 1



2.5.3 Slot 2



A Summary

A.1 Status

V&V Scientist	Jen Lauer
V&V Date (YYYY-MM-DD)	2012.12.11
V&V Edition	1
V&V Disposition and Status	OK
V&V Charge Time	10.518

A.2 Comments

Charge time for this ObsId remains at previous value of 10.518 ks although with the current processing the charge time would have been 10.42 ksec.

=====

This observation was interrupted by safing of the science instruments onboard Chandra due to high solar radiation environment. The observation was interrupted at 2002-01-11:03:17. Due to a high radiation environment, the instruments were safed and the observation terminated early. This observation has been reprocessed so that the aspect solution correctly handles the instrument safing and maneuver activities at the end of the observation.

=====

Joint Proposal: HST