

V&V Reference Report

L2 ASCDS Version : 7.6.8.1

Observation 2751 - L2 Version 001
Chandra X-Ray Center

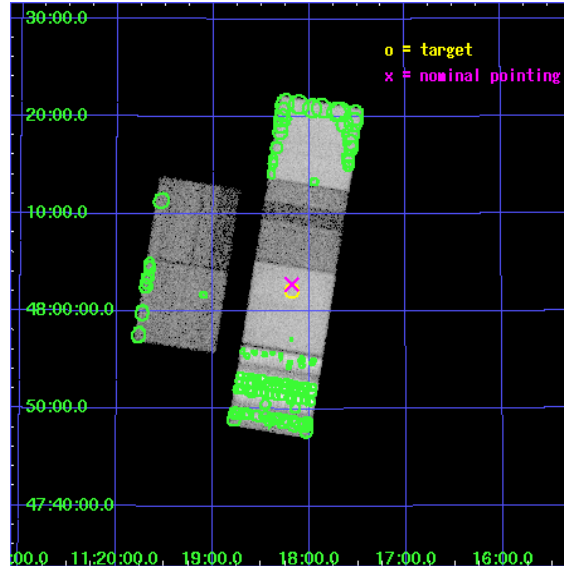
L2 Processing Date : Aug 26 2006

Contents

1	Front	2
2	OBI	3
2.1	OBI	3
2.1.1	Images	3
2.1.2	Bias	3
2.1.3	Parameters	4
2.1.4	Events	4
2.2	Compared Parameters	5
2.3	Aspect	6
2.4	Star Slots	9
2.4.1	Slot 3	9
2.4.2	Slot 4	10
2.4.3	Slot 5	11
2.4.4	Slot 6	12
2.4.5	Slot 7	13
2.5	FID Slots	14
2.5.1	Slot 0	14
2.5.2	Slot 1	15
2.5.3	Slot 2	16
3	Point Sources	17
A	Summary	18
A.1	Status	18
A.2	Comments	18

1 Front

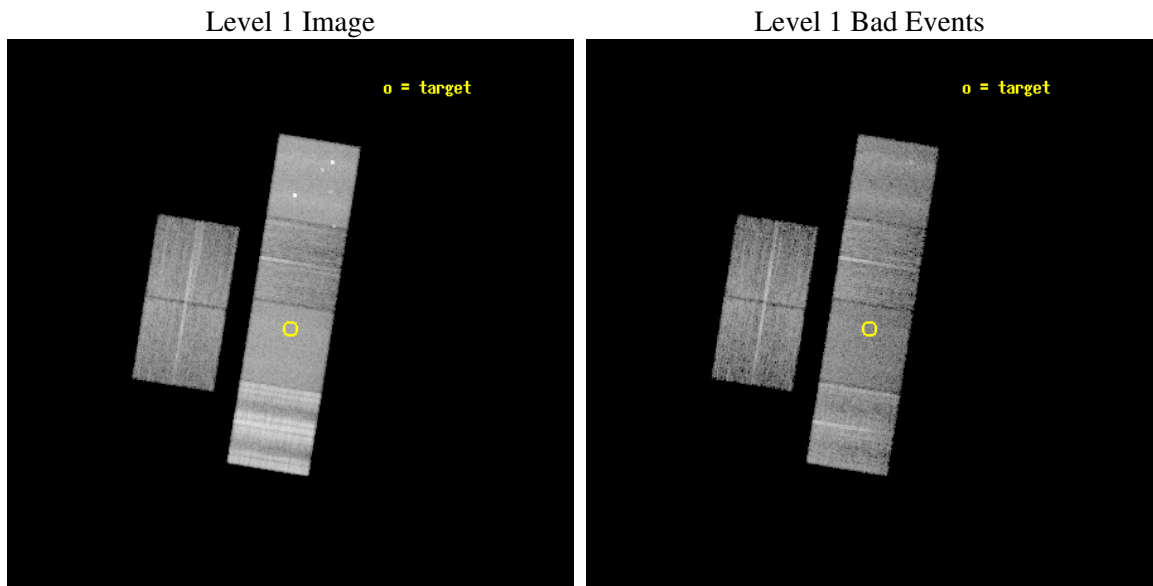
seq_num	400231
obs_id	2751
title	MULTIWAVELENGTH OBSERVATIONS OF THE BLACK HOLE XTE J1118+480 IN QUIESCENCE
observer	Dr. Stephen Murray
object	XTE J1118+480
dtcycle	0
cycle	P
ra_targ	169.545
dec_targ	48.03675
ra_nom	169.54530030065
dec_nom	48.046476672314
roll_nom	99.130985956128
revision	2
ontime	10515.200009793
livetime	10382.050215776
ontime2	7125.0041546524
ontime3	7624.2483123541
ontime5	10515.200009793
ontime6	7565.9106979072
ontime7	10515.200009793
ontime8	8502.5528066903
l2events	270459



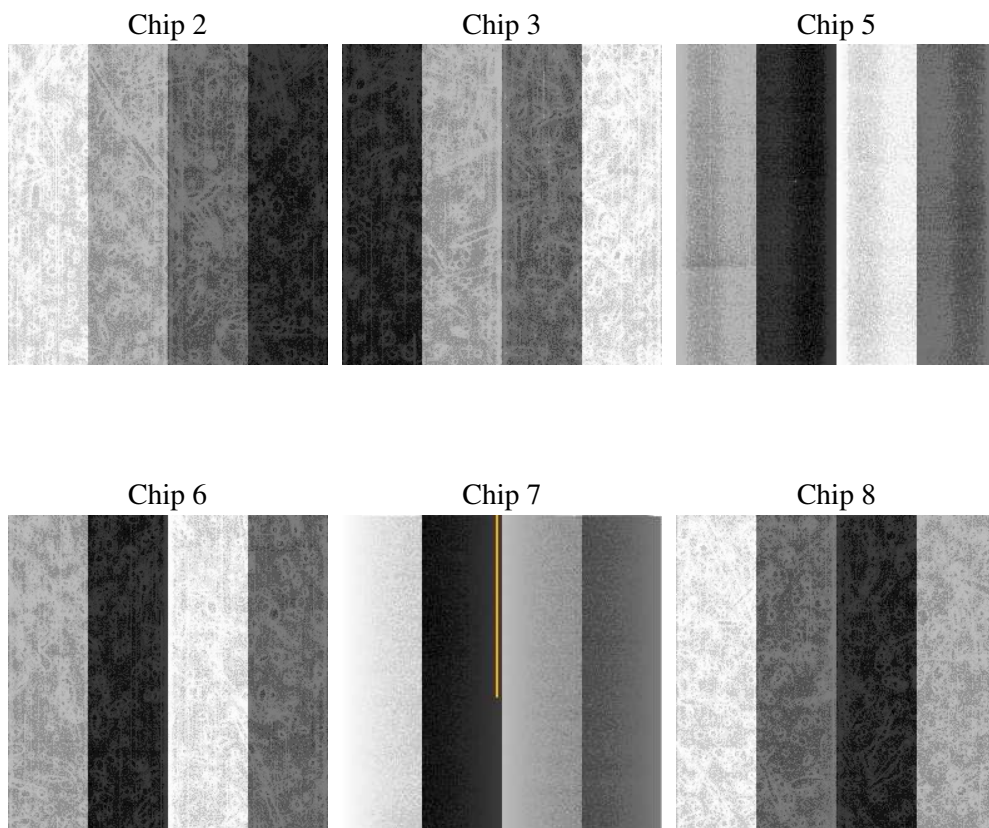
2 OBI

2.1 OBI

2.1.1 Images



2.1.2 Bias



2.1.3 Parameters

obi_num	0
ascdsver	7.6.8.1
caldsver	3.2.3
date	2006-08-26T07:05:24
revision	2

sched_exp_time	31200.000000
ontime	10565.672234714
ontime2	7149.6824291348
ontime3	7652.0336358249
ontime5	10565.672234714
ontime6	7590.4549813867
ontime7	10565.672234714
ontime8	8546.5430810899
l1events	758794

2.1.4 Events

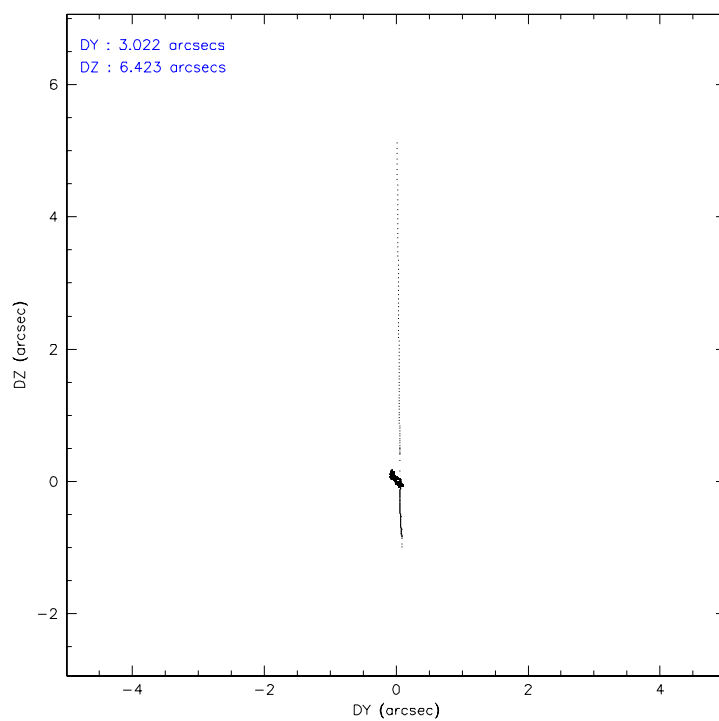
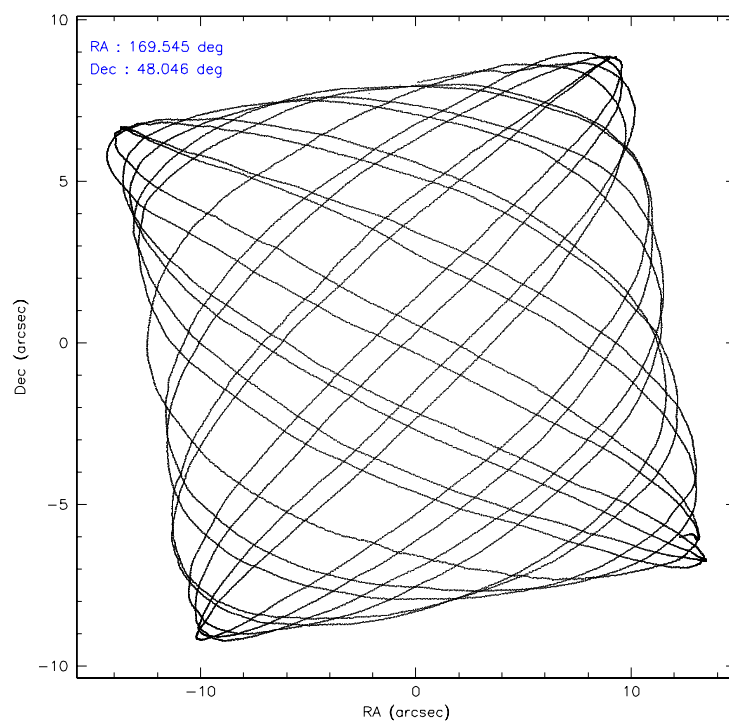
	ccd 2	ccd 3	ccd 5	ccd 6	ccd 7	ccd 8
level 1 events	81949	82371	147306	88679	125850	232639
rejected events	63569	63865	67870	67752	59994	85755
rejected %	77%	77%	46%	76%	47%	36%

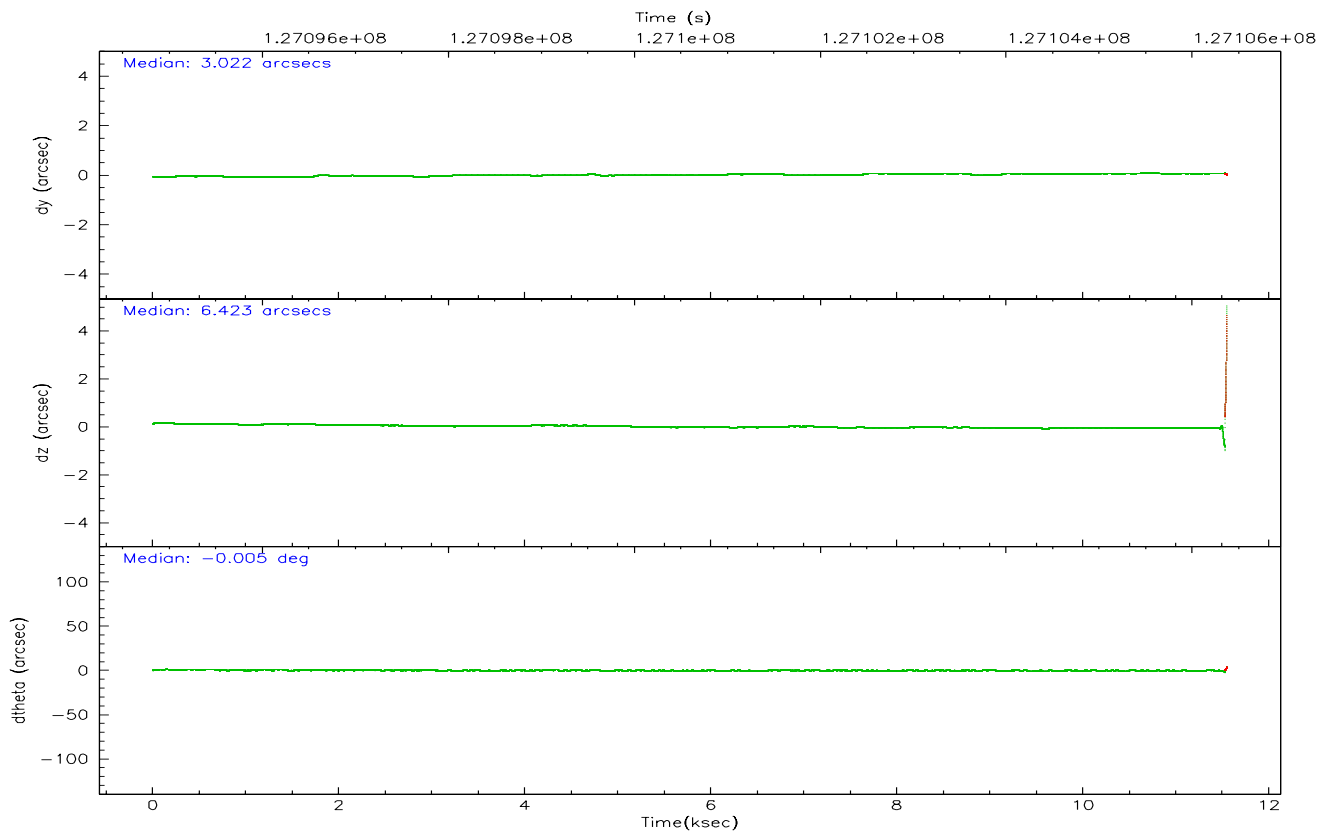
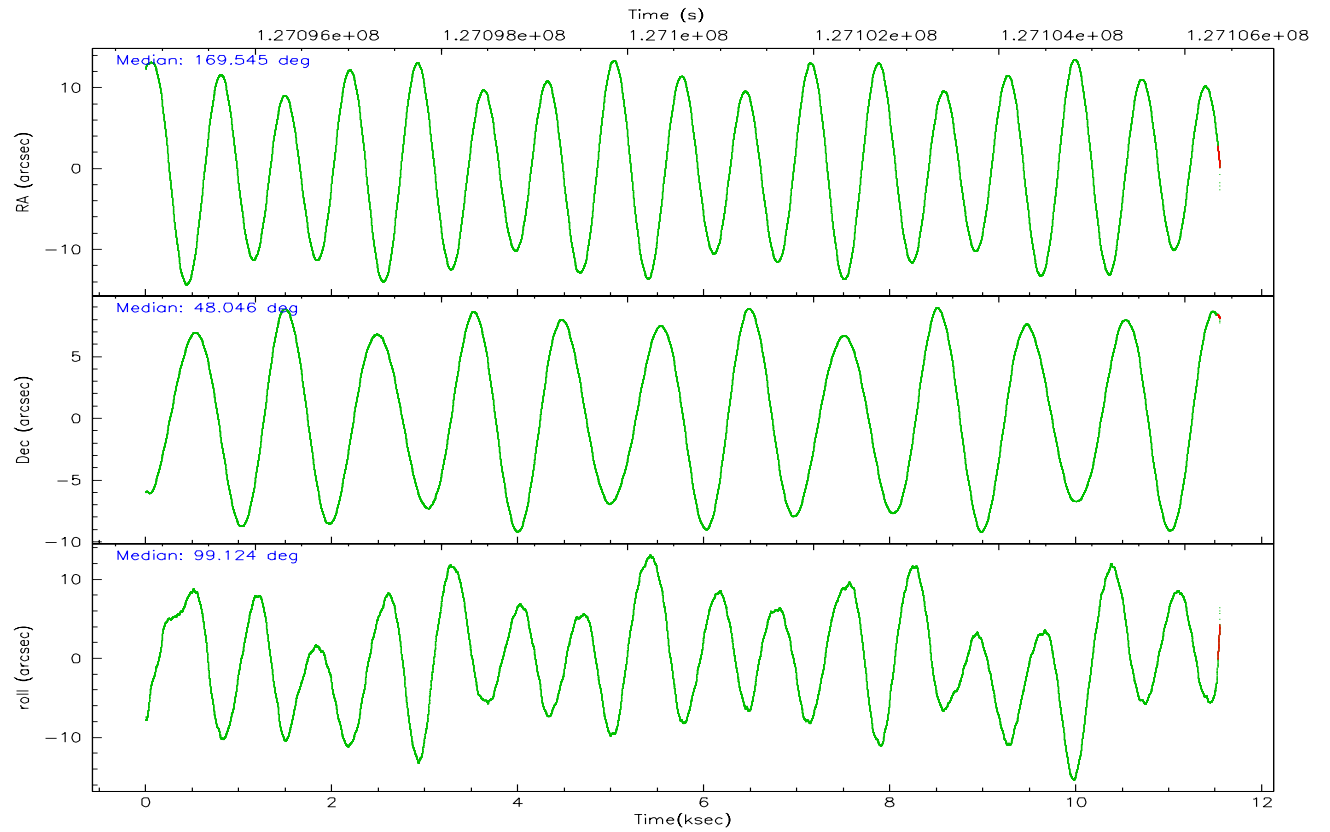
	ccd 2	ccd 3	ccd 5	ccd 6	ccd 7	ccd 8
grade 0 events	8152	7403	10641	9534	5546	49280
	9%	8%	7%	10%	4%	21%
grade 1 events	55	42	374	56	97	387
	0%	0%	0%	0%	0%	0%
grade 2 events	5282	5982	25112	6484	15607	21365
	6%	7%	17%	7%	12%	9%
grade 3 events	641	763	3356	815	3930	25152
	0%	0%	2%	0%	3%	10%
grade 4 events	1026	841	3331	833	3881	22288
	1%	1%	2%	0%	3%	9%
grade 5 events	1748	1944	5699	2130	6423	4490
	2%	2%	3%	2%	5%	1%
grade 6 events	3331	3565	37270	3307	37094	29258
	4%	4%	25%	3%	29%	12%
grade 7 events	61714	61831	61523	65520	53272	80419
	75%	75%	41%	73%	42%	34%

2.2 Compared Parameters

Parameter	Planned	Actual	Parameter	Planned	Actual
Instrument	ACIS	ACIS	Obspar format version number	6	6
Detector	ACIS-235678	ACIS-235678	Obspar file type	PREDICTED	ACTUAL
Grating	NONE	NONE	Obspar update status	NONE	UPDATED
Data mode	VFAINT	VFAINT	On-chip summing requested	N	N
Observation mode	POINTING	POINTING	Subarray requested	NONE	NONE
Pointing RA	169.571365	169.5453003006527	Alternating exposures requested	N	N
Pointing Dec	48.025530	48.04647667231444	Primary exposure time	0.000000	3.2
Pointing Roll	98.954974	99.13098595612806			
SIM focus pos (mm)	-0.684267	-0.6828225247311905			
SIM defocus (mm)	0	0.001444936568705701			
SIM translation stage pos (mm)	-190.132523	-190.1400660498719			
SIM translation stage offset (mm)	0	0.00754346686406393			
Observation start time	127095798.184000	127094445.97157			
Observation start date	2002-01-11T00:22:14	2002-01-11T00:00:45			
Observation end time	127126998.184000	127106403.10955			
Observation end date	2002-01-11T09:02:14	2002-01-11T03:20:03			
Read mode	TIMED	TIMED			

2.3 Aspect



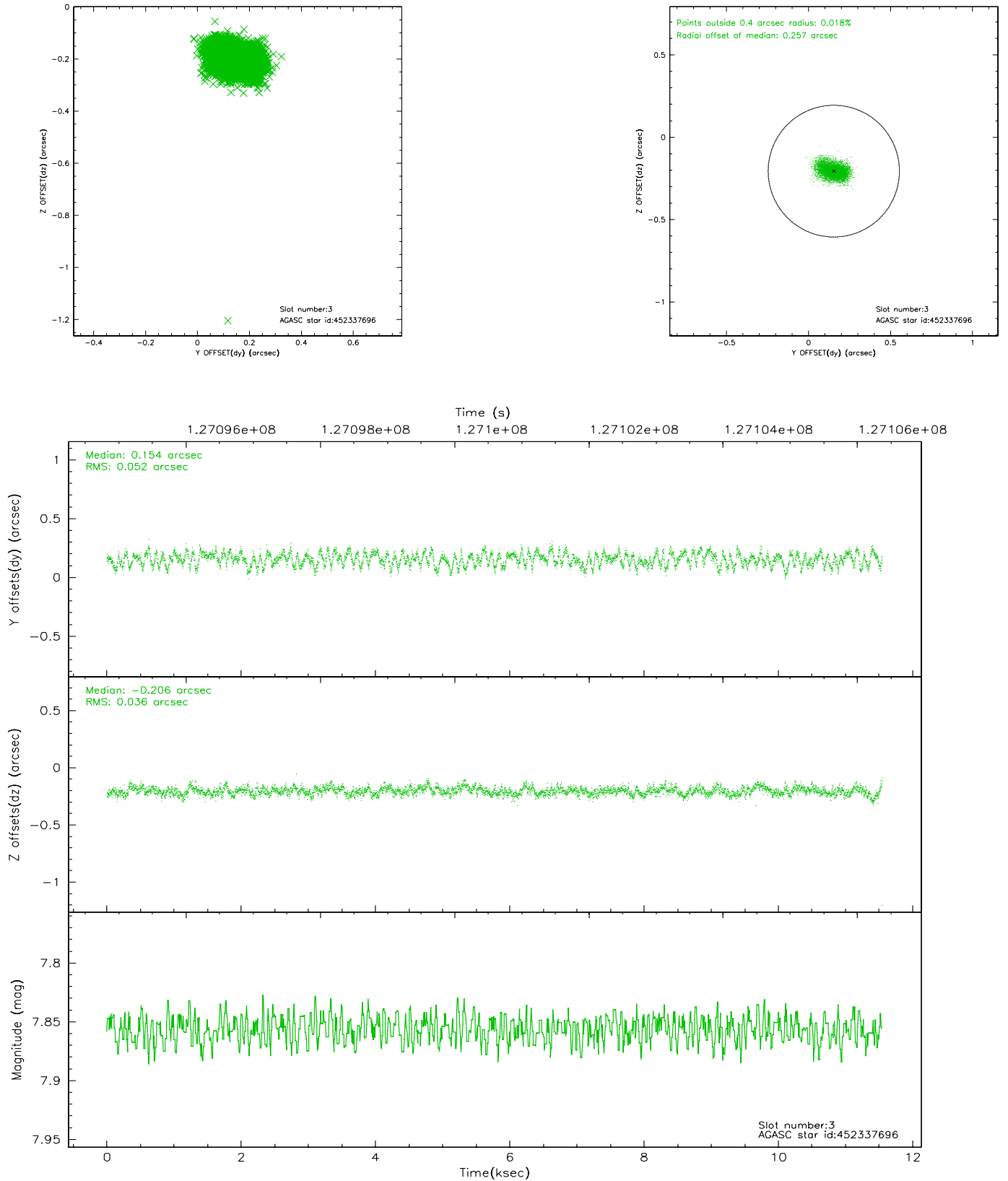


Slot Statistics

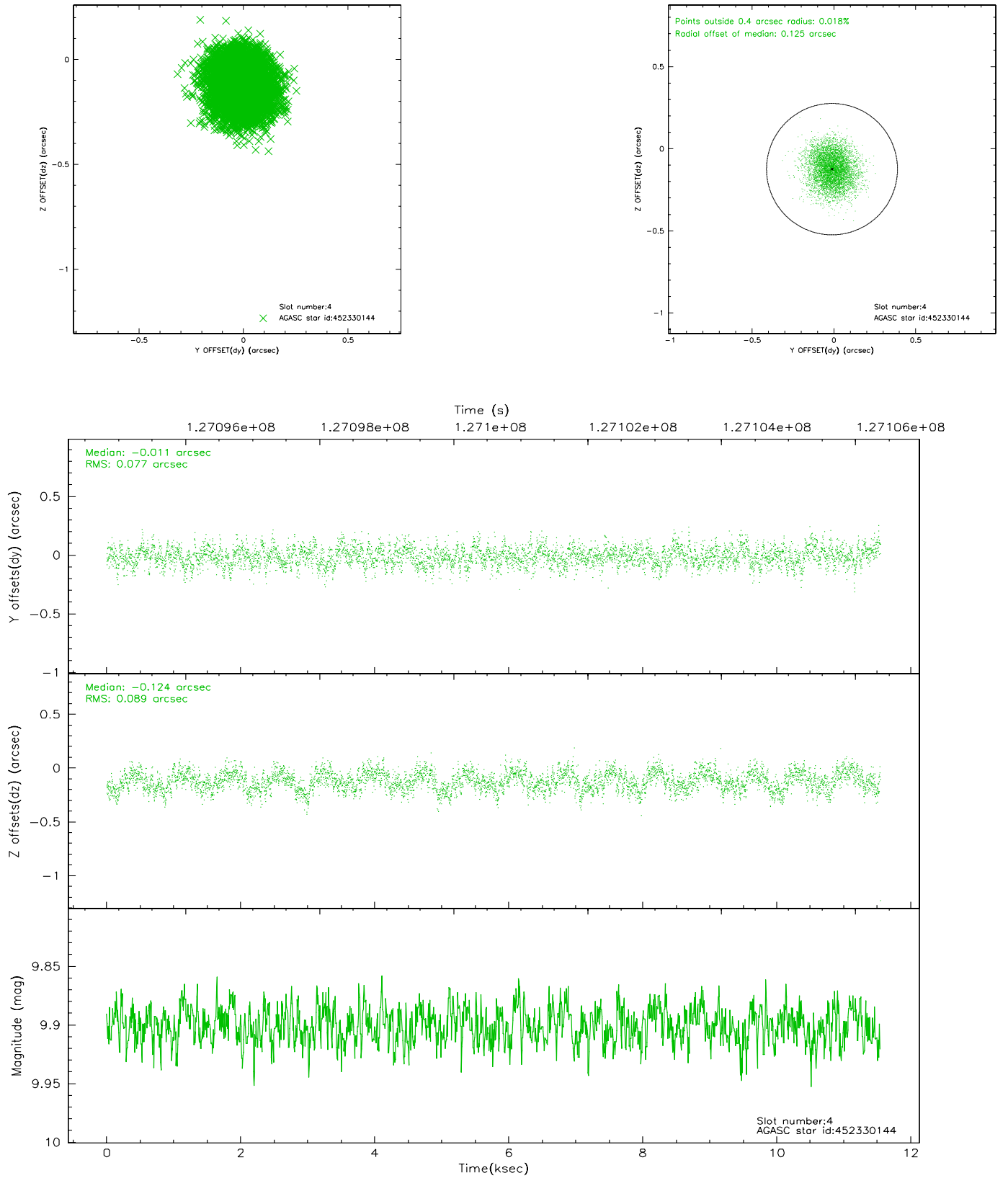
slot	status	id	mag	n_pts	med_dy	med_dz	dr1	dr2	ra	dec	mean_y	mean_z
0	FID	ACIS-S-2	7.11	2810	-0.015	0.033	0.007	0.012	0.000000	0.000000	-755.65	-1727.57
1	FID	ACIS-S-4	7.20	2809	-0.065	-0.002	0.006	0.010	0.000000	0.000000	2157.34	180.47
2	FID	ACIS-S-5	7.24	2810	0.049	-0.022	0.007	0.011	0.000000	0.000000	-1807.90	174.56
3	GUIDE	452337696	7.86	5632	0.154	-0.206	0.066	0.107	168.869582	47.479497	-1667.73	1990.28
4	GUIDE	452330144	9.90	5625	-0.011	-0.124	0.126	0.197	169.116291	48.616983	2275.38	737.66
5	GUIDE	452329856	10.10	5627	-0.210	0.362	0.132	0.213	170.088304	48.576176	1771.75	-1525.60
6	GUIDE	452335192	9.87	5602	0.080	0.056	0.125	0.211	170.184144	47.953835	-477.75	-1421.22
7	GUIDE	452330336	9.72	5631	-0.017	-0.091	0.114	0.180	168.787124	48.590922	2311.18	1525.52

2.4 Star Slots

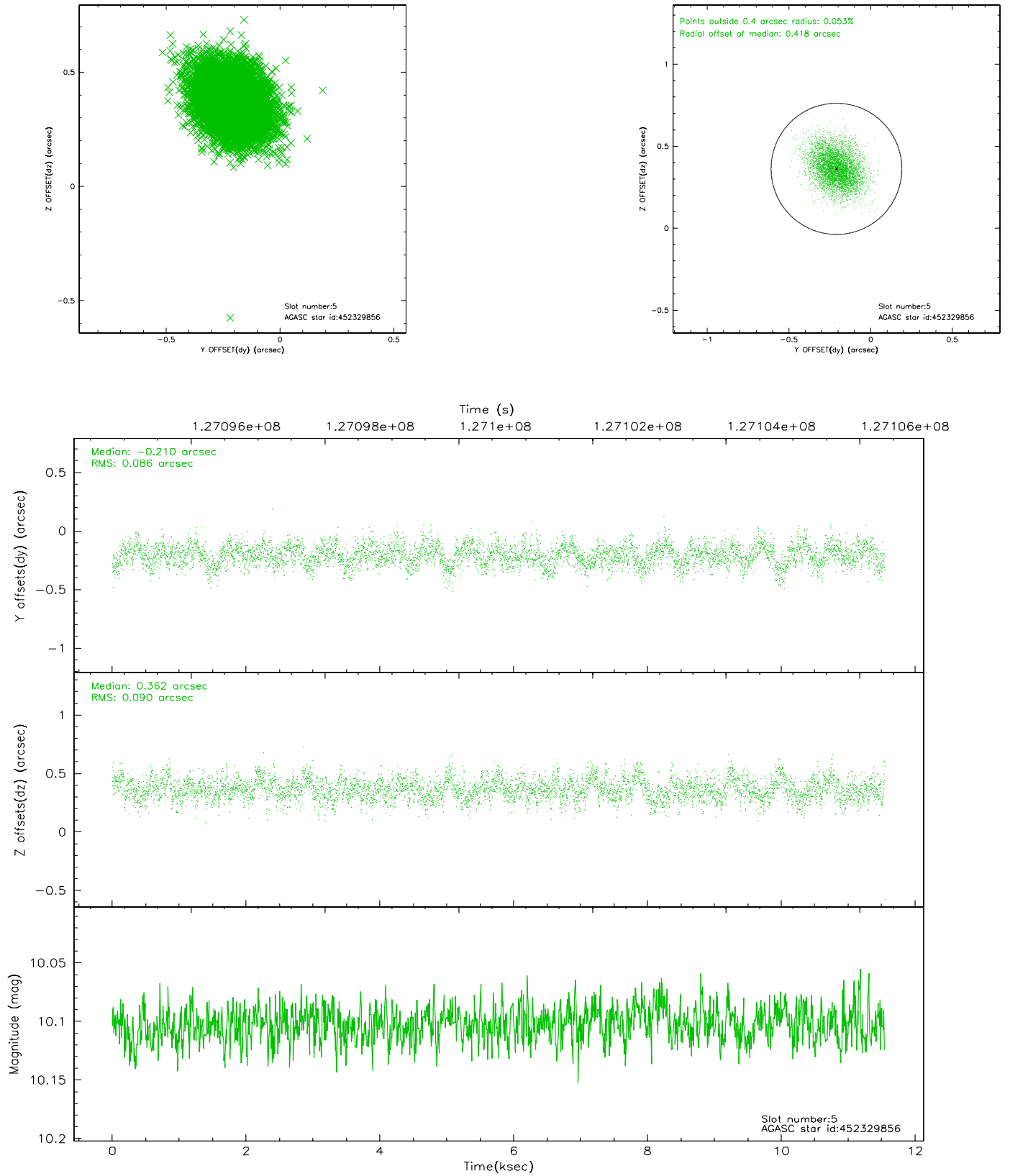
2.4.1 Slot 3



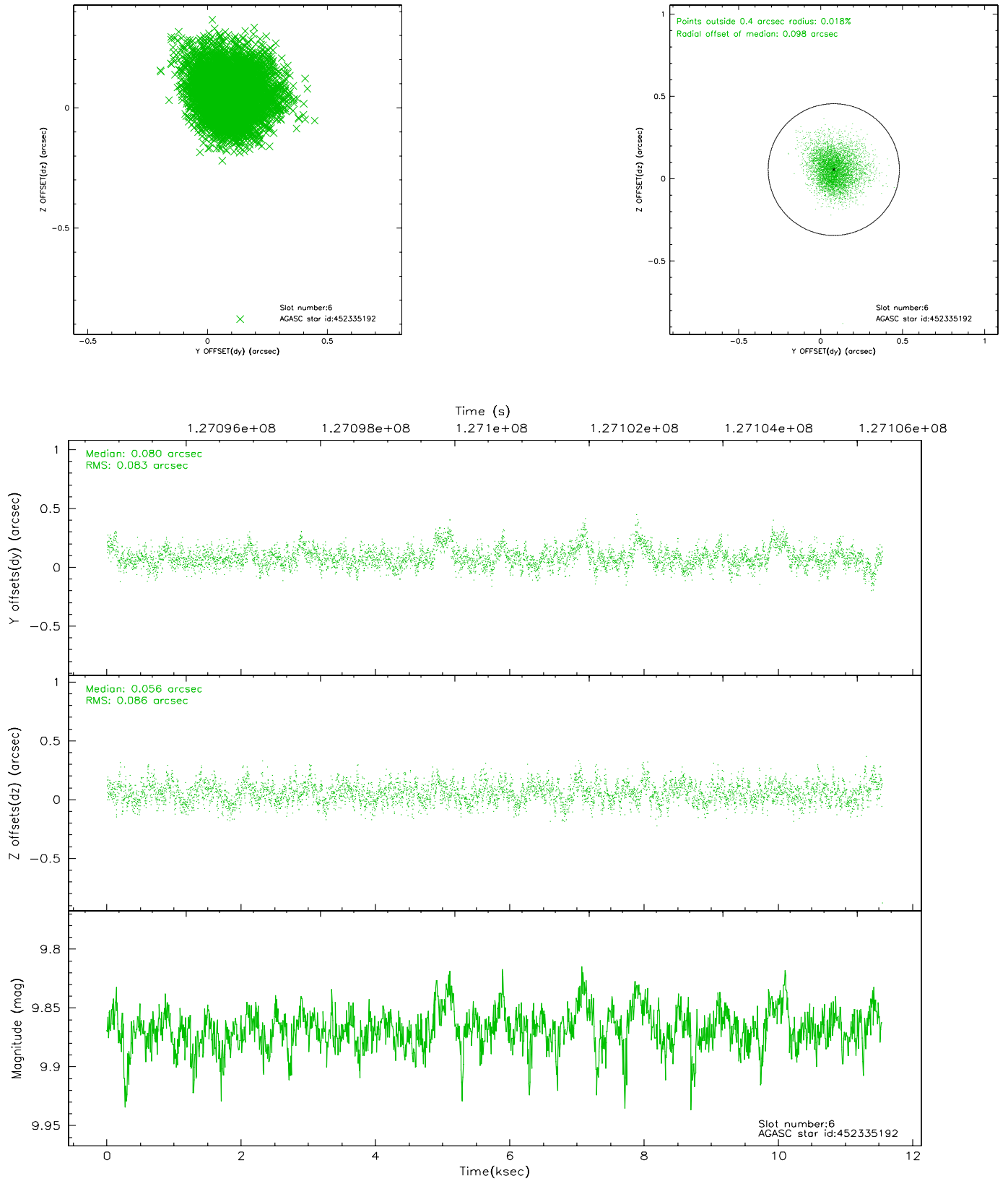
2.4.2 Slot 4



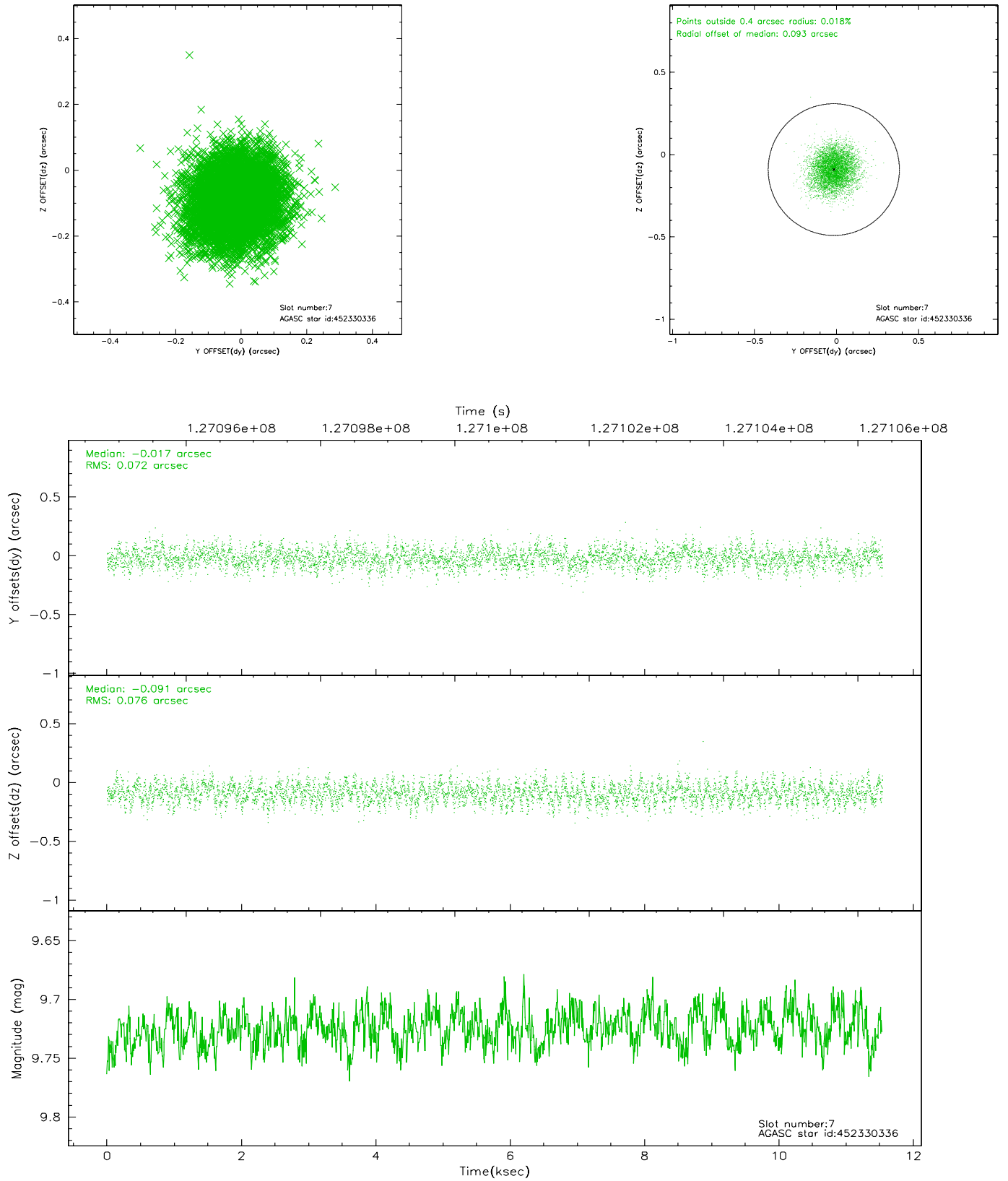
2.4.3 Slot 5



2.4.4 Slot 6

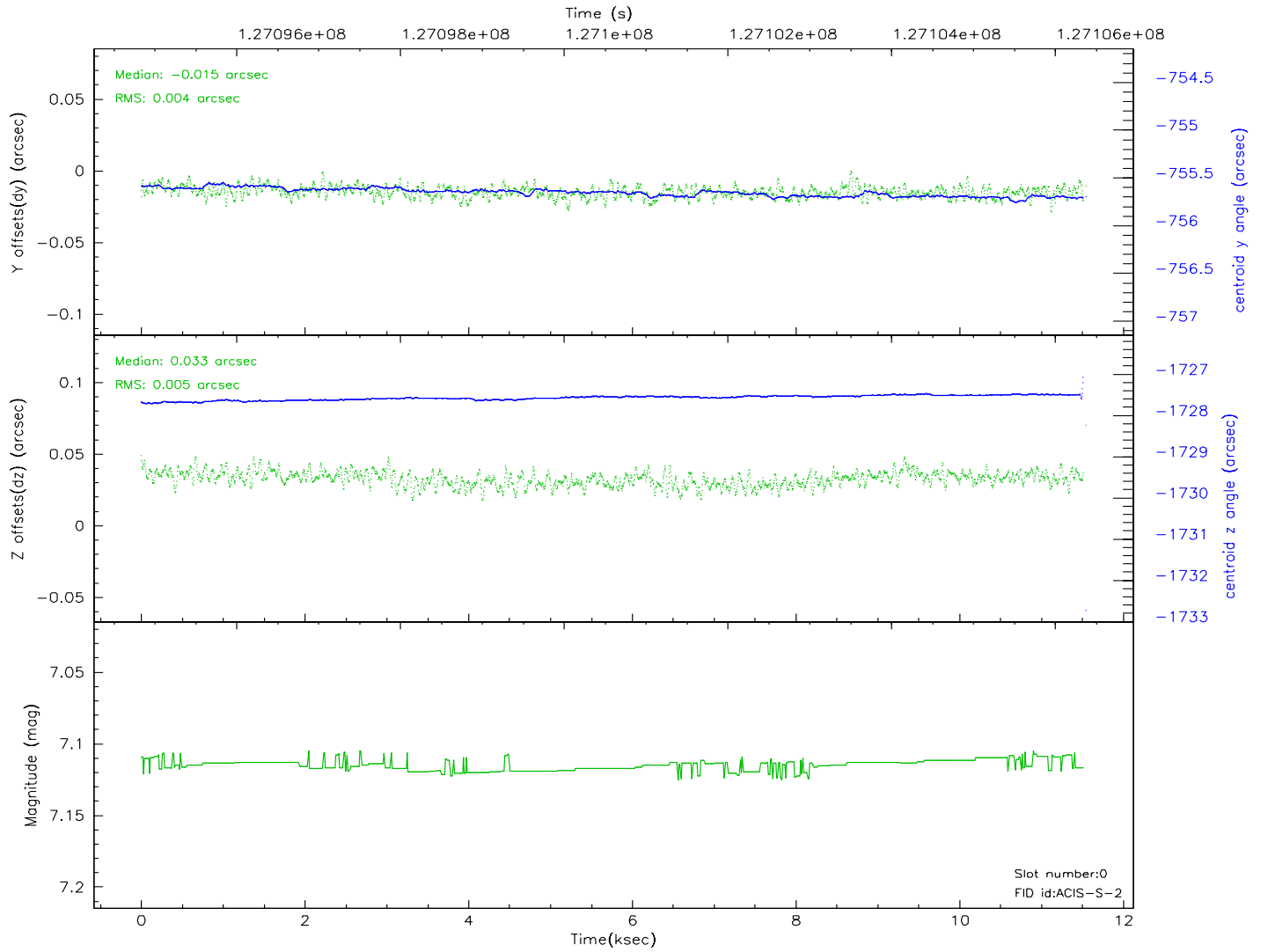
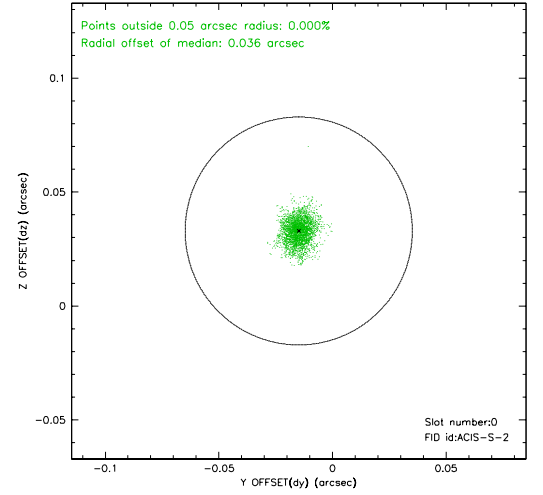
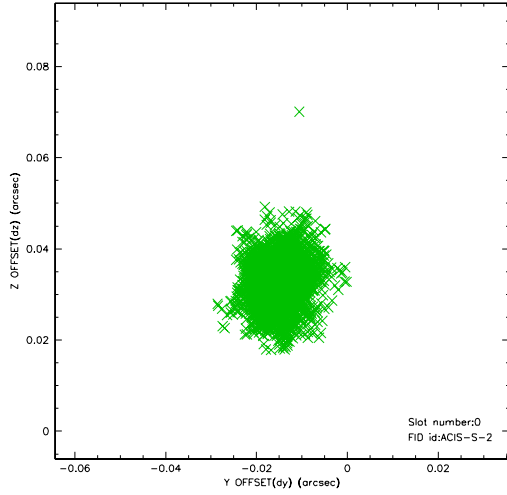


2.4.5 Slot 7

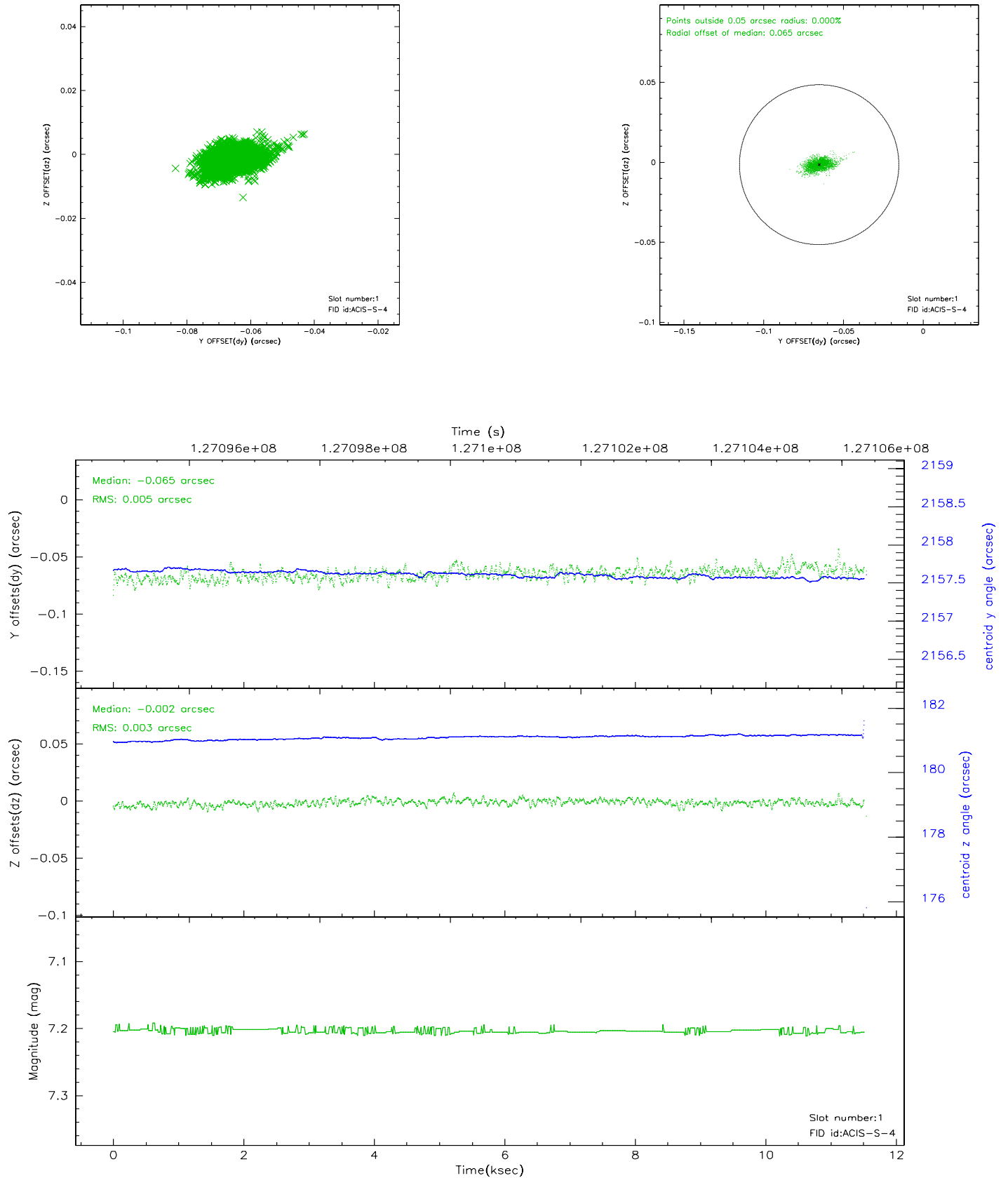


2.5 FID Slots

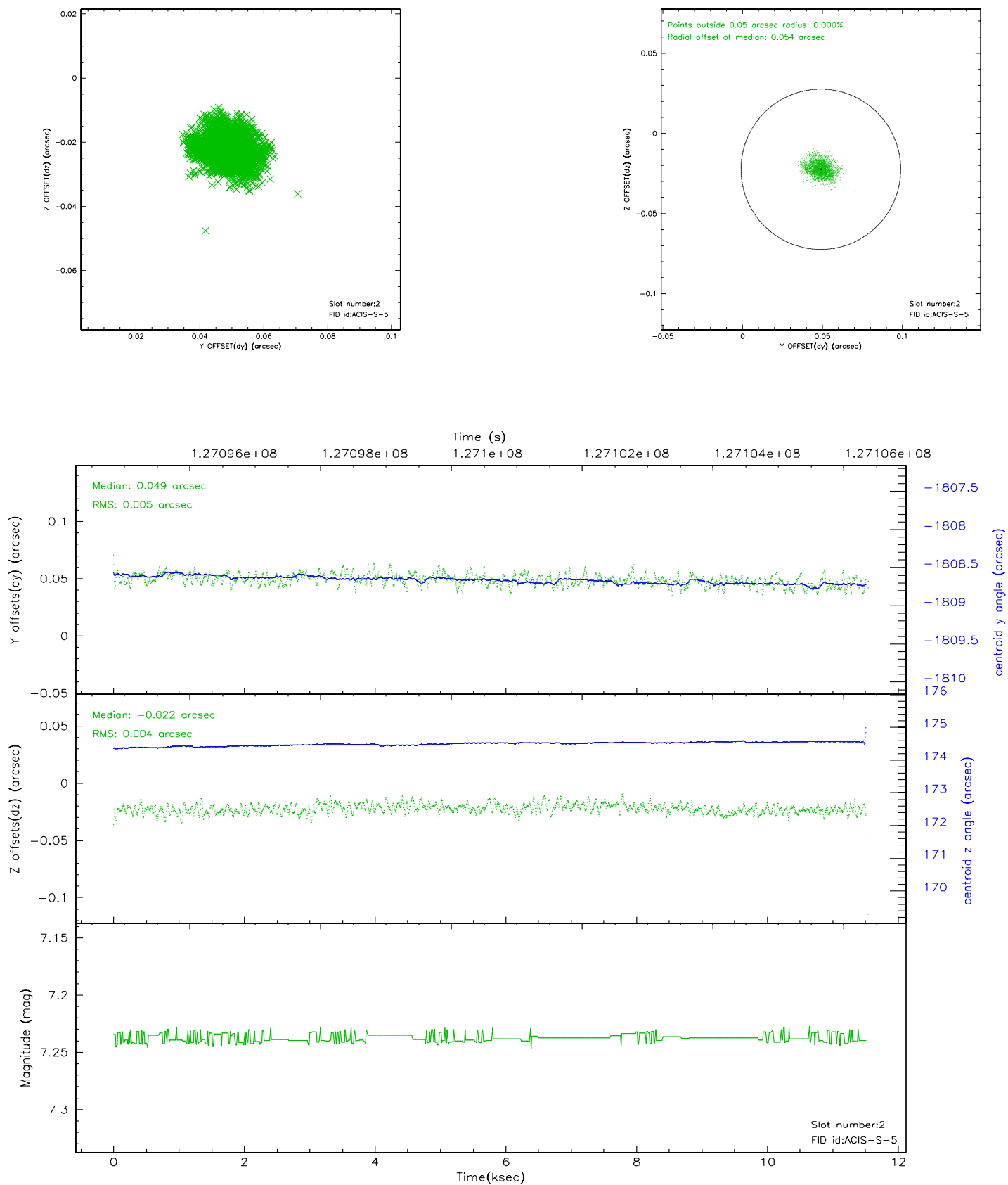
2.5.1 Slot 0



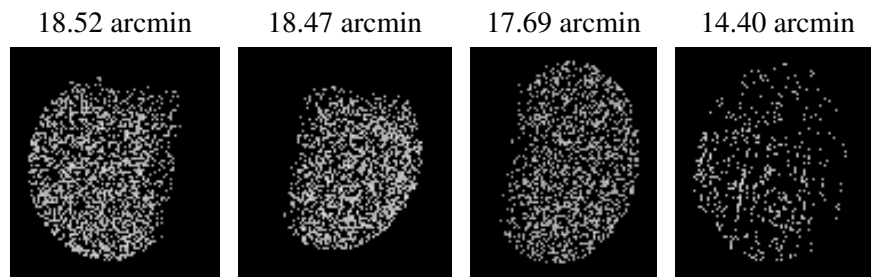
2.5.2 Slot 1



2.5.3 Slot 2



3 Point Sources



A Summary

A.1 Status

V&V Scientist	Beth Sundheim
V&V Date (YYYY-MM-DD)	2006.08.28
V&V Edition	1
V&V Disposition and Status	OK
V&V Charge Time	10.518

A.2 Comments

This observation was interrupted by safing of the science instruments due to high solar radiation environment (SCS 107).