

# V&V Reference Report

## L2 ASCDS Version : 7.6.9

Observation 2738 - L2 Version 001  
Chandra X-Ray Center

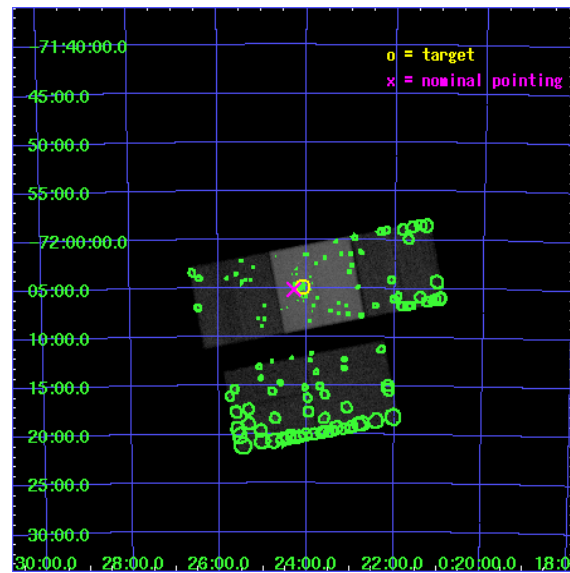
L2 Processing Date : Oct 7 2006

## Contents

<b>1</b>	<b>Front</b>	<b>2</b>
<b>2</b>	<b>OBI</b>	<b>3</b>
2.1	OBI . . . . .	3
2.1.1	Images . . . . .	3
2.1.2	Bias . . . . .	3
2.1.3	Parameters . . . . .	4
2.1.4	Events . . . . .	4
2.2	Compared Parameters . . . . .	5
2.3	Aspect . . . . .	6
2.4	Star Slots . . . . .	9
2.4.1	Slot 3 . . . . .	9
2.4.2	Slot 4 . . . . .	10
2.4.3	Slot 5 . . . . .	11
2.4.4	Slot 6 . . . . .	12
2.4.5	Slot 7 . . . . .	13
2.5	FID Slots . . . . .	14
2.5.1	Slot 0 . . . . .	14
2.5.2	Slot 1 . . . . .	15
2.5.3	Slot 2 . . . . .	16
<b>3</b>	<b>Point Sources</b>	<b>17</b>
<b>A</b>	<b>Summary</b>	<b>18</b>
A.1	Status . . . . .	18
A.2	Comments . . . . .	18

# 1 Front

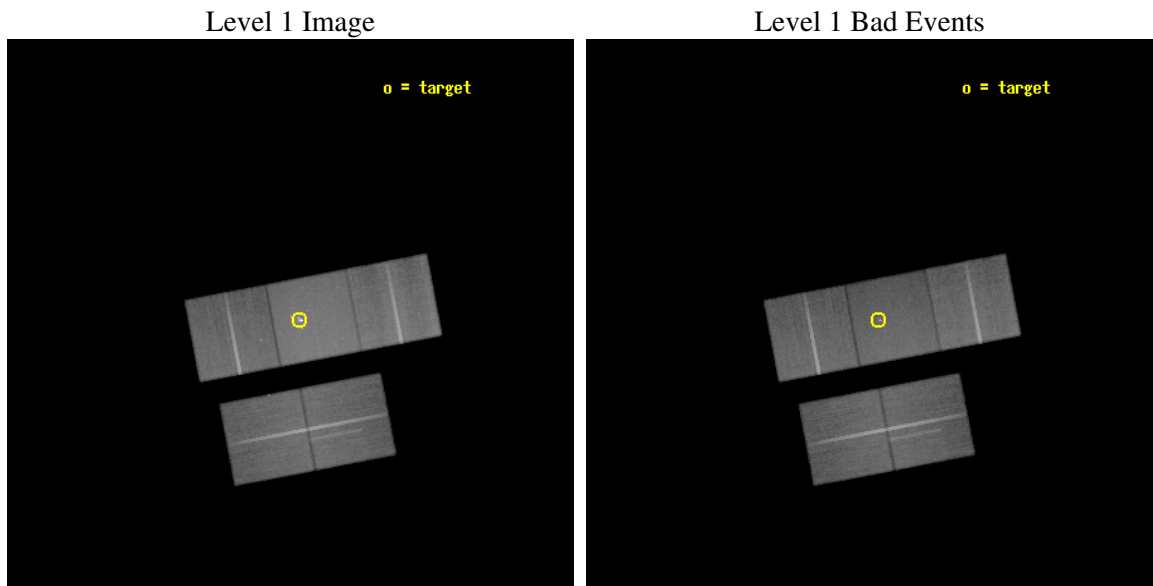
seq_num	400218
obs_id	2738
title	COMPLETE COMPACT OBJECT AND BINARY SURVEY OF 47TUC
observer	Prof. Jonathan Grindlay
object	47 TUCANAE
dtcycle	0
cycle	P
ra_targ	6.024167
dec_targ	-72.080889
ra_nom	6.0732176736945
dec_nom	-72.085523242256
roll_nom	349.20329898992
revision	3
ontime	69681.799866021
livetime	68771.355851776
ontime2	69678.658875853
ontime3	69681.799866021
ontime6	69672.376975358
ontime7	69681.799866021
ontime8	69678.658905804
l2events	468691



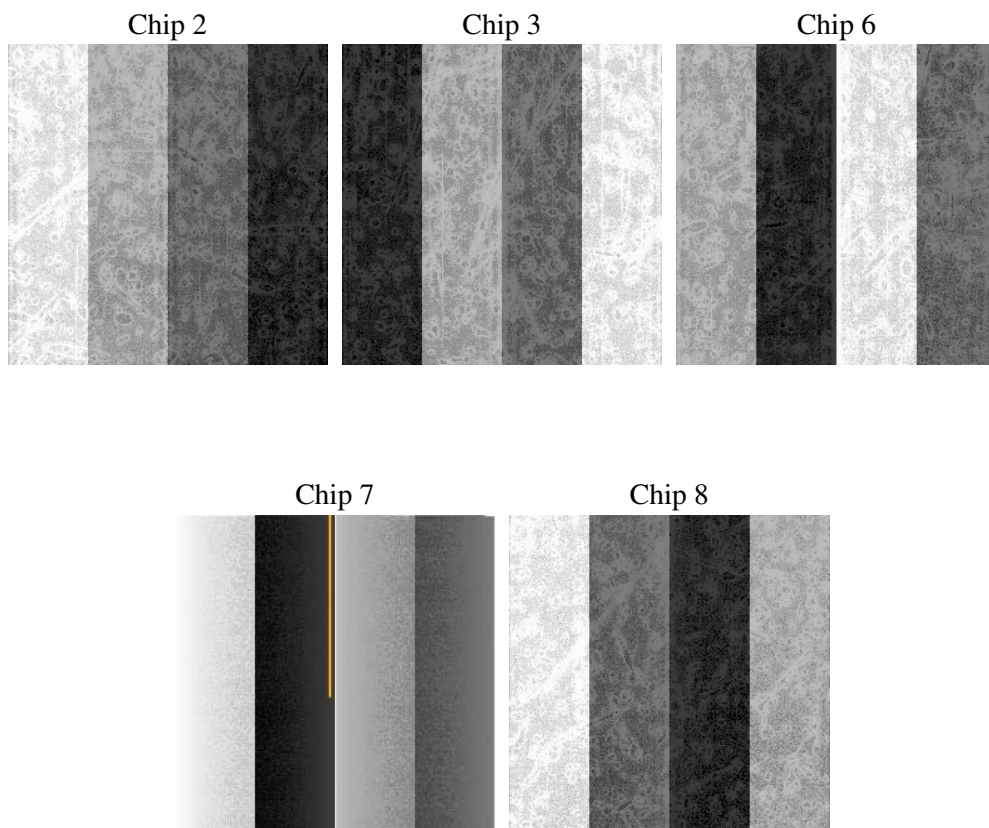
## 2 OBI

### 2.1 OBI

#### 2.1.1 Images



#### 2.1.2 Bias



### 2.1.3 Parameters

obi_num	0
ascdsver	7.6.9
caldbver	3.2.3
date	2006-10-07T09:22:21
revision	3

sched_exp_time	69500.000000
ontime	70044.34537366
ontime2	70041.204383492
ontime3	70044.345353723
ontime6	70034.922482997
ontime7	70044.34537366
ontime8	70041.204413444
l1events	2655472

### 2.1.4 Events

	ccd 2	ccd 3	ccd 6	ccd 7	ccd 8
level 1 events	461286	463989	477290	663229	589678
rejected events	407365	410810	422037	385077	472019
rejected %	88%	88%	88%	58%	80%

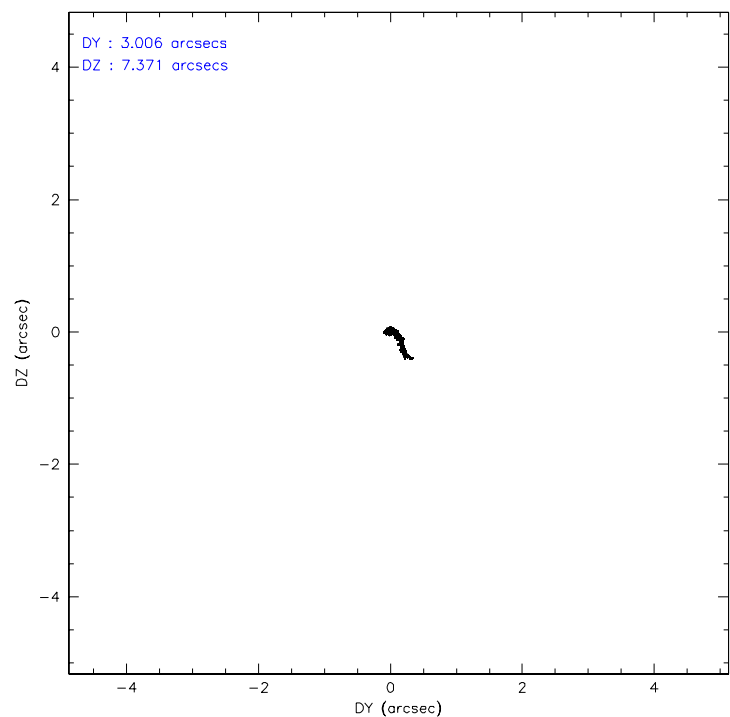
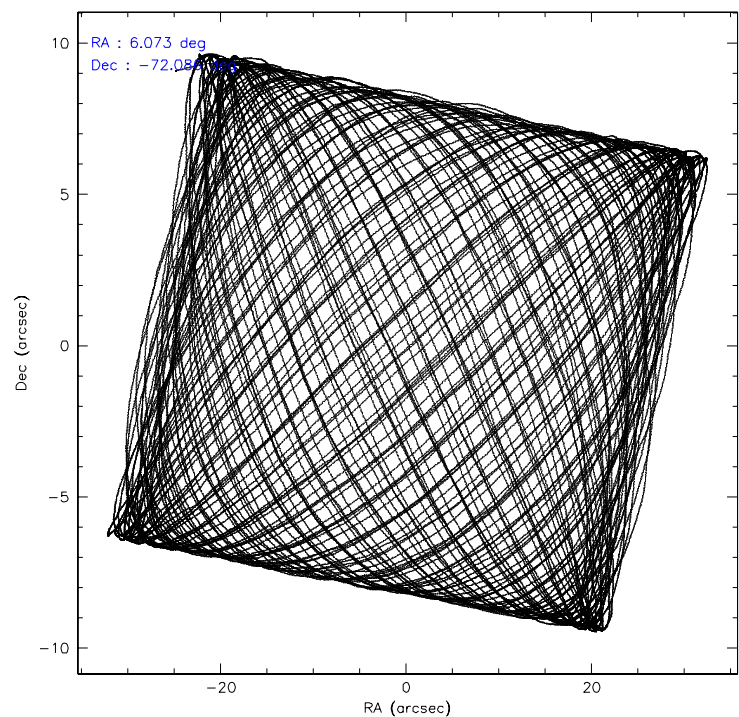
	ccd 2	ccd 3	ccd 6	ccd 7	ccd 8
grade 0 events	24774	23746	22759	26895	37377
	5%	5%	4%	4%	6%
grade 1 events	281	292	208	584	369
	0%	0%	0%	0%	0%
grade 2 events	10500	9847	11195	68367	25580
	2%	2%	2%	10%	4%
grade 3 events	5141	5523	5576	16921	12942
	1%	1%	1%	2%	2%
grade 4 events	5180	5197	5366	16541	11853
	1%	1%	1%	2%	2%
grade 5 events	16813	19611	20541	43402	26998
	3%	4%	4%	6%	4%
grade 6 events	8605	9155	10656	150701	30503
	1%	1%	2%	22%	5%
grade 7 events	389992	390618	400989	339818	444056
	84%	84%	84%	51%	75%

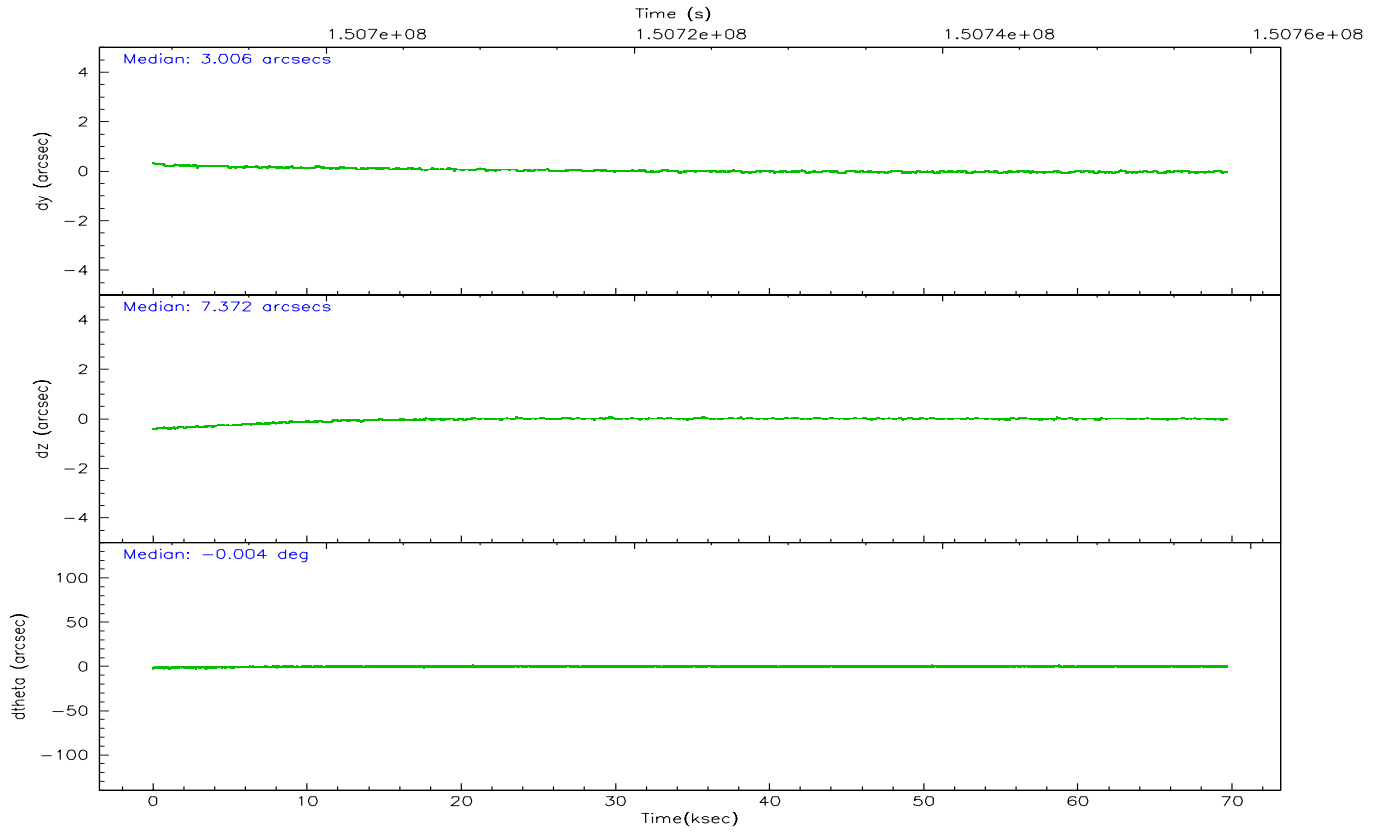
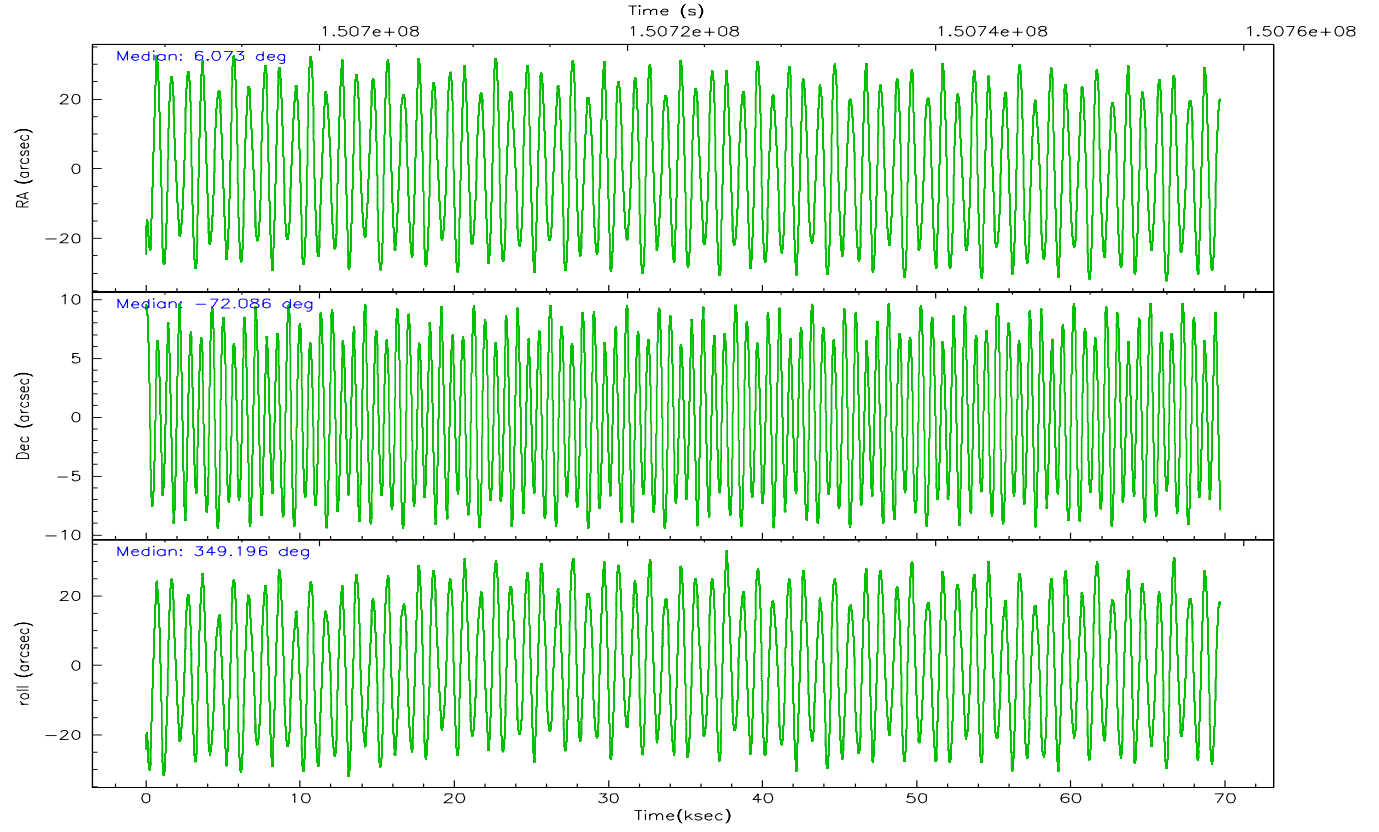


## 2.2 Compared Parameters

Parameter	Planned	Actual	Parameter	Planned	Actual
Instrument	ACIS	ACIS	Obspar format version number	6	6
Detector	ACIS-23678	ACIS-23678	Obspar file type	PREDICTED	ACTUAL
Grating	NONE	NONE	Obspar update status	NONE	UPDATED
Data mode	FAINT	FAINT	Number of optional ACIS chips dropped	0	0
Observation mode	POINTING	POINTING	On-chip summing requested	N	N
Pointing RA	5.989961	6.073217673694507	Subarray requested	NONE	NONE
Pointing Dec	-72.094791	-72.08552324225627	Alternating exposures requested	N	N
Pointing Roll	348.967451	349.2032989899189	Primary exposure time	0.000000	3.1
SIM focus pos (mm)	-0.684267	-0.6828225247311905			
SIM defocus (mm)	0	0.001444936568705701			
SIM translation stage pos (mm)	-190.132523	-190.1400660498719			
SIM translation stage offset (mm)	0	0.00754346686406393			
Observation start time	150688959.184000	150687779.57255			
Observation start date	2002-10-11T02:01:35	2002-10-11T01:42:59			
Observation end time	150758459.184000	150758592.72548			
Observation end date	2002-10-11T21:19:55	2002-10-11T21:23:12			
Read mode	TIMED	TIMED			

## 2.3 Aspect



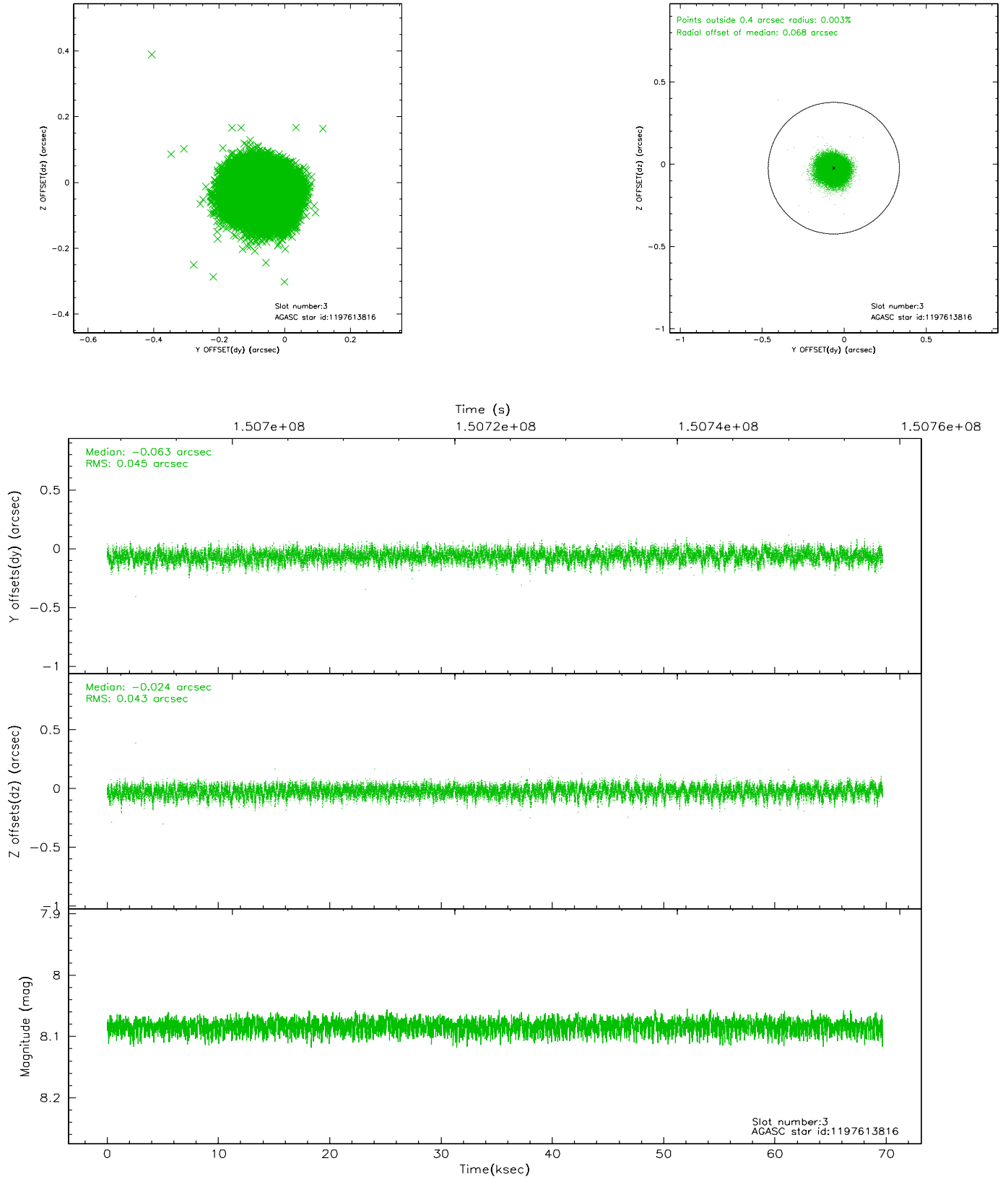


### Slot Statistics

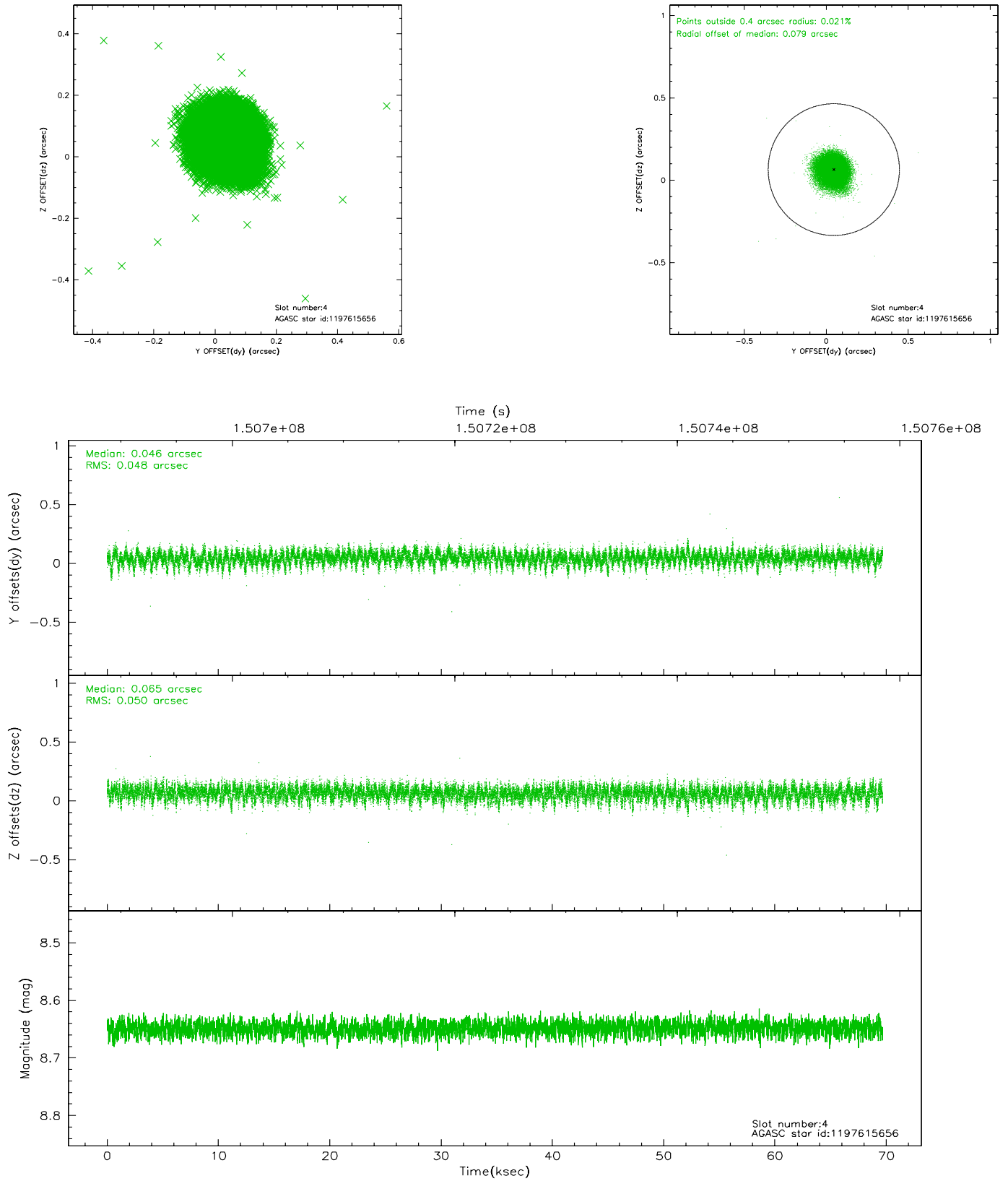
slot	status	id	mag	n_pts	med_dy	med_dz	dr1	dr2	ra	dec	mean_y	mean_z
0	FID	ACIS-S-2	7.11	16995	-0.005	0.021	0.007	0.011	0.000000	0.000000	-755.69	-1728.49
1	FID	ACIS-S-4	7.20	16995	-0.041	-0.003	0.006	0.012	0.000000	0.000000	2157.58	180.03
2	FID	ACIS-S-5	7.24	16996	0.015	-0.009	0.007	0.012	0.000000	0.000000	-1808.59	173.63
3	GUIDE	1197613816	8.08	33986	-0.063	-0.024	0.066	0.108	5.181461	-71.977993	-962.97	234.94
4	GUIDE	1197615656	8.65	33989	0.046	0.065	0.073	0.120	6.909375	-71.882658	865.63	939.57
5	GUIDE	1197999176	8.85	33914	-0.006	-0.019	0.094	0.148	6.259352	-72.617840	645.32	-1792.74
6	GUIDE	1197624848	9.72	33912	0.026	0.078	0.151	0.248	4.678747	-71.378615	-1969.79	2226.49
7	GUIDE	1197619752	9.98	33756	0.007	-0.107	0.222	0.354	4.510721	-71.856694	-1787.28	504.27

## 2.4 Star Slots

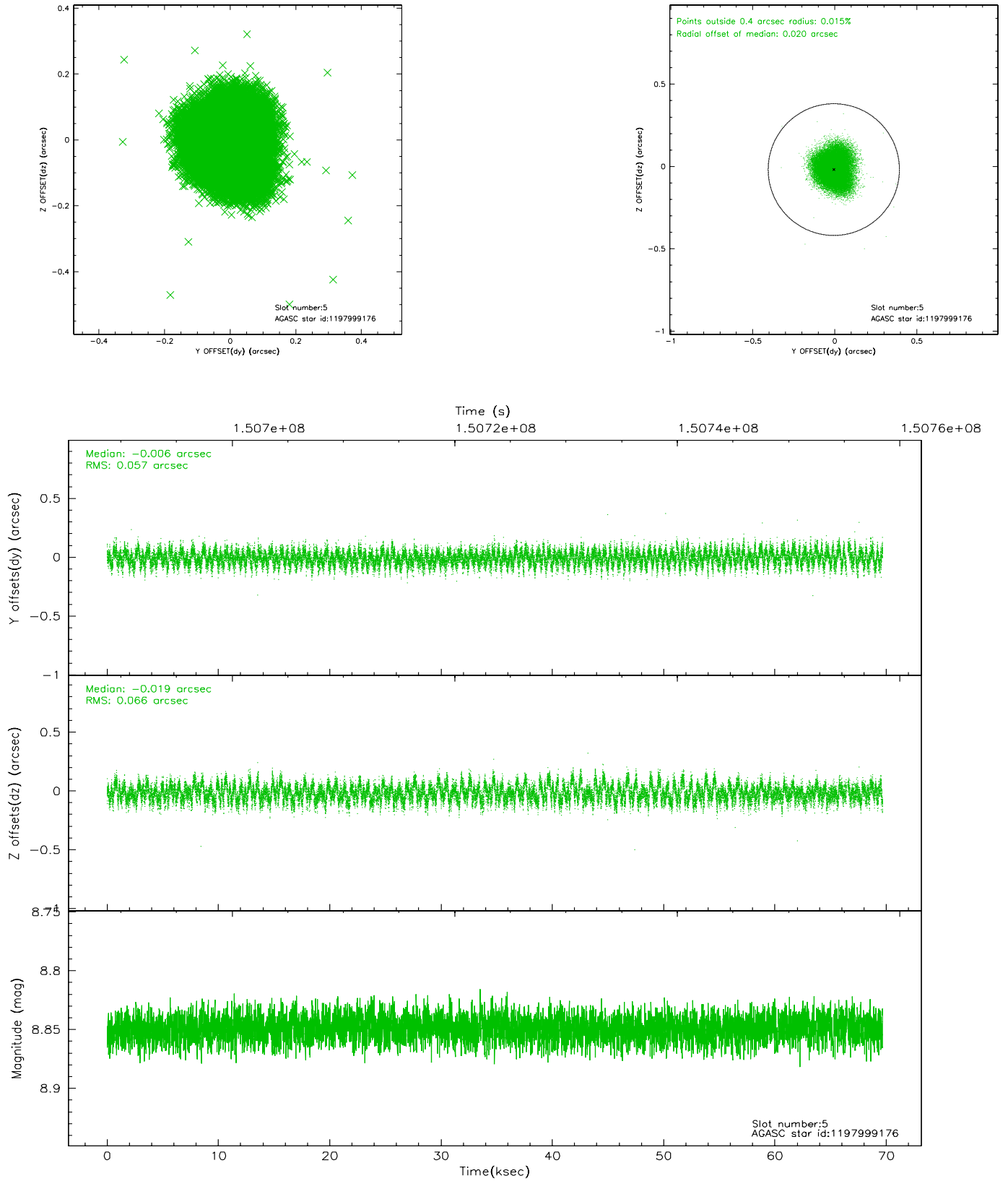
### 2.4.1 Slot 3



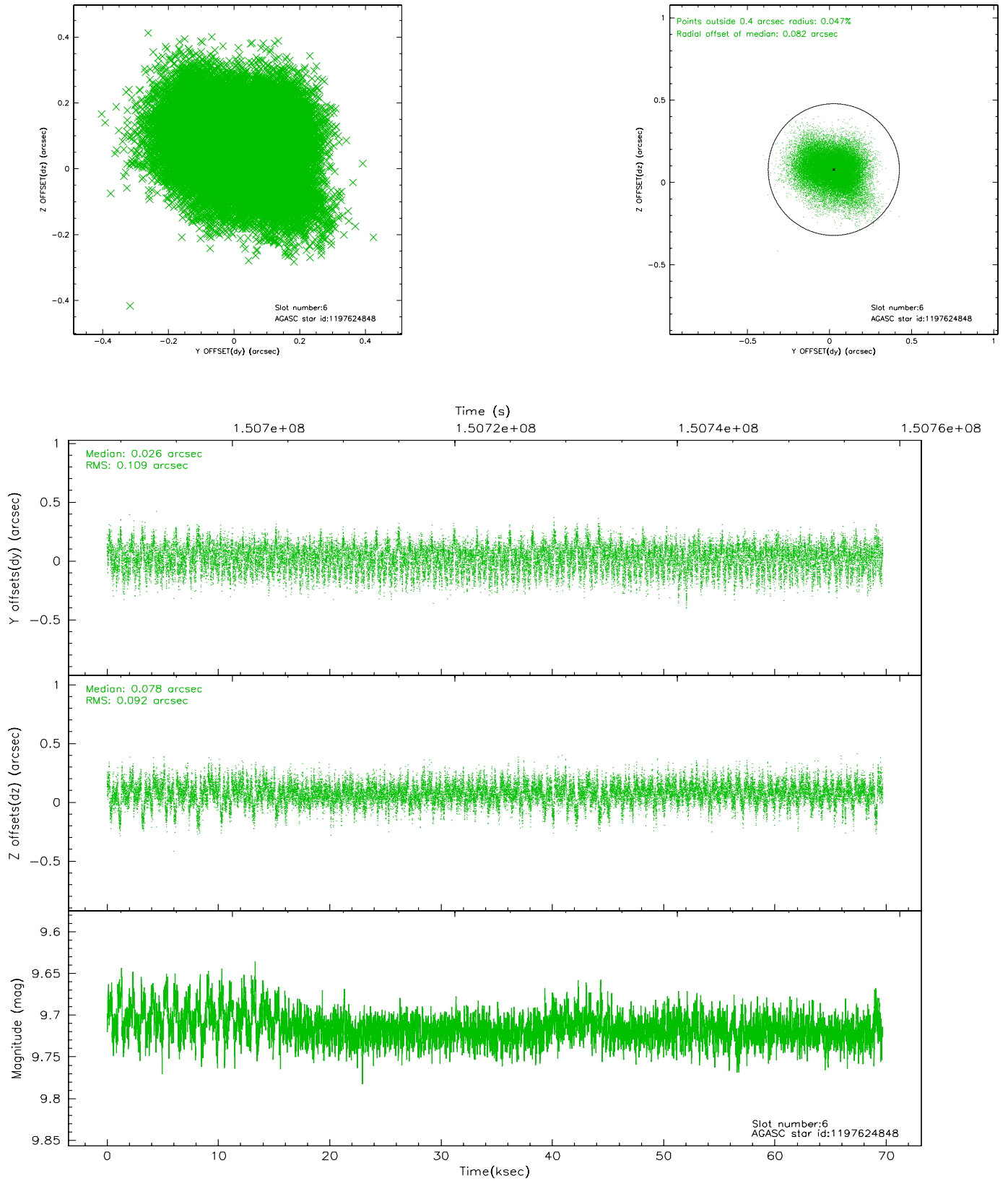
## 2.4.2 Slot 4



### 2.4.3 Slot 5

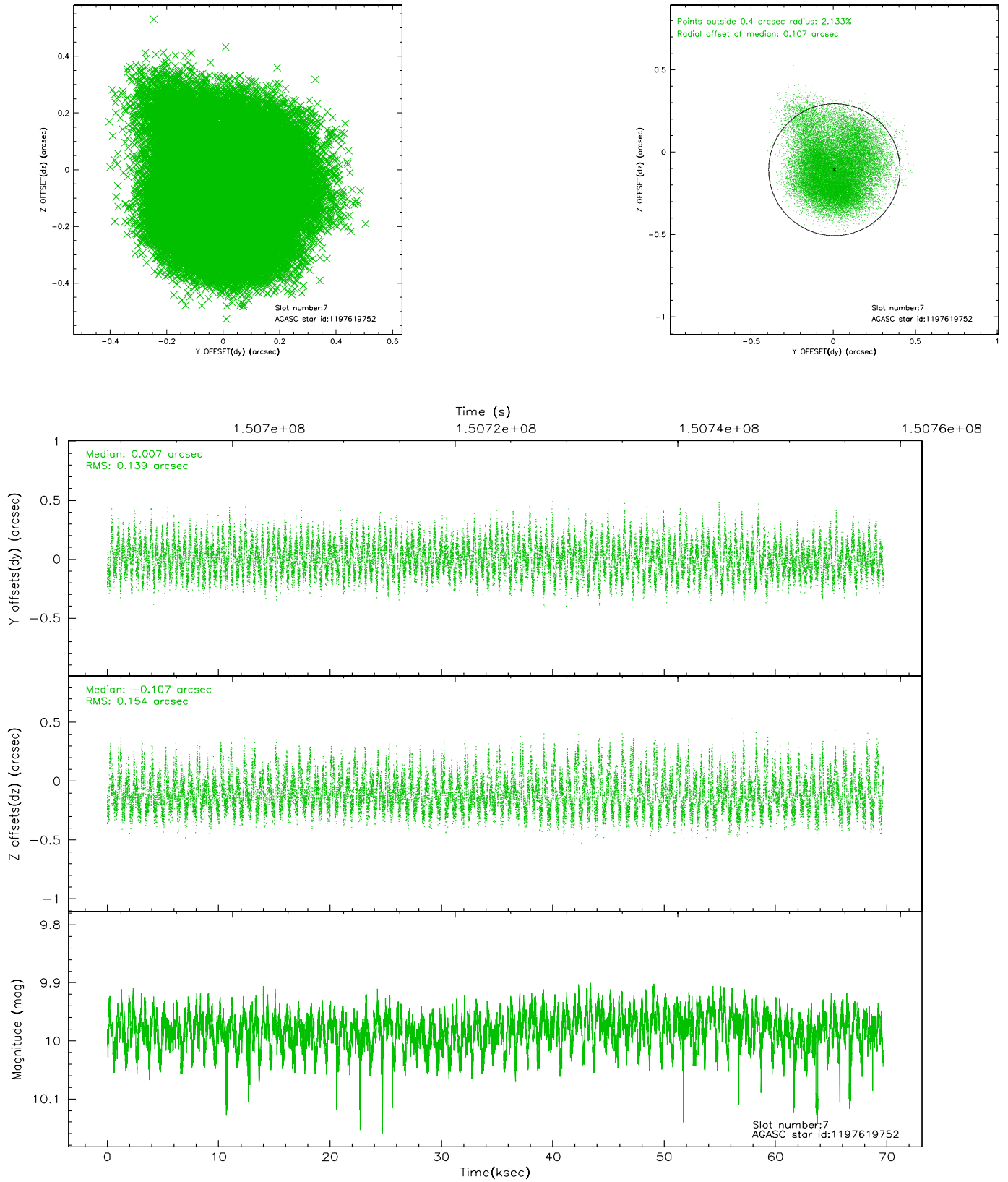


## 2.4.4 Slot 6



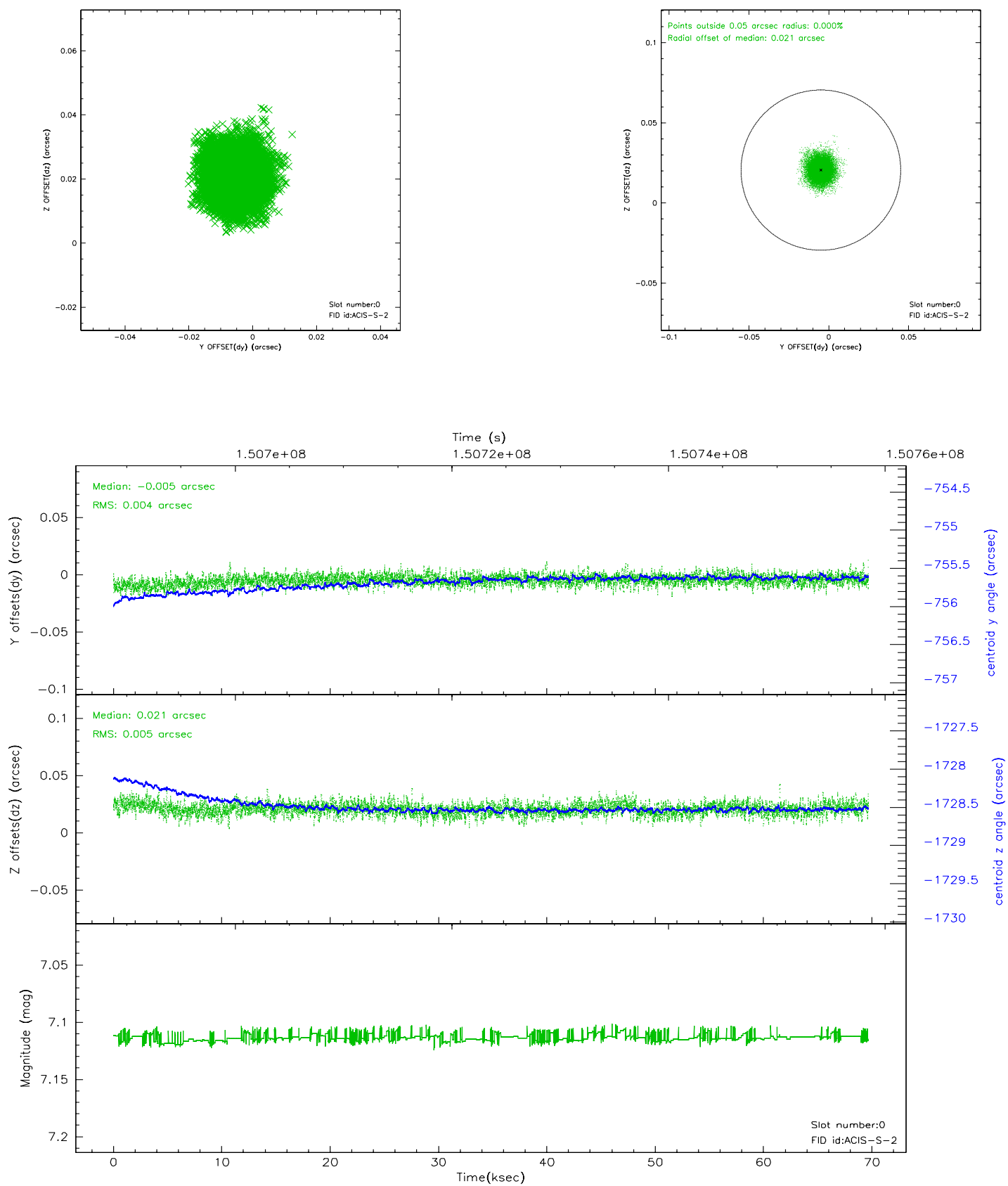


## 2.4.5 Slot 7

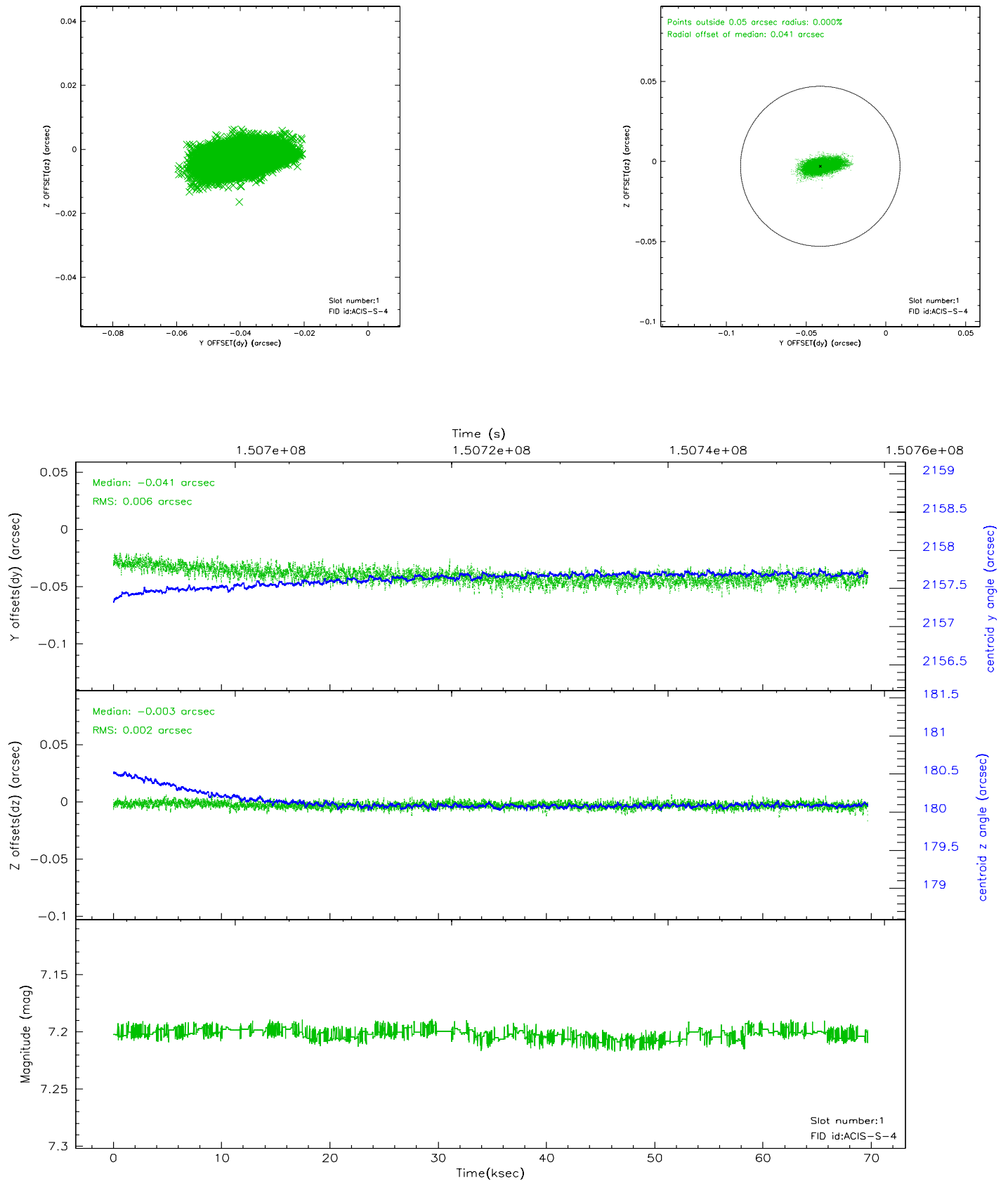


## 2.5 FID Slots

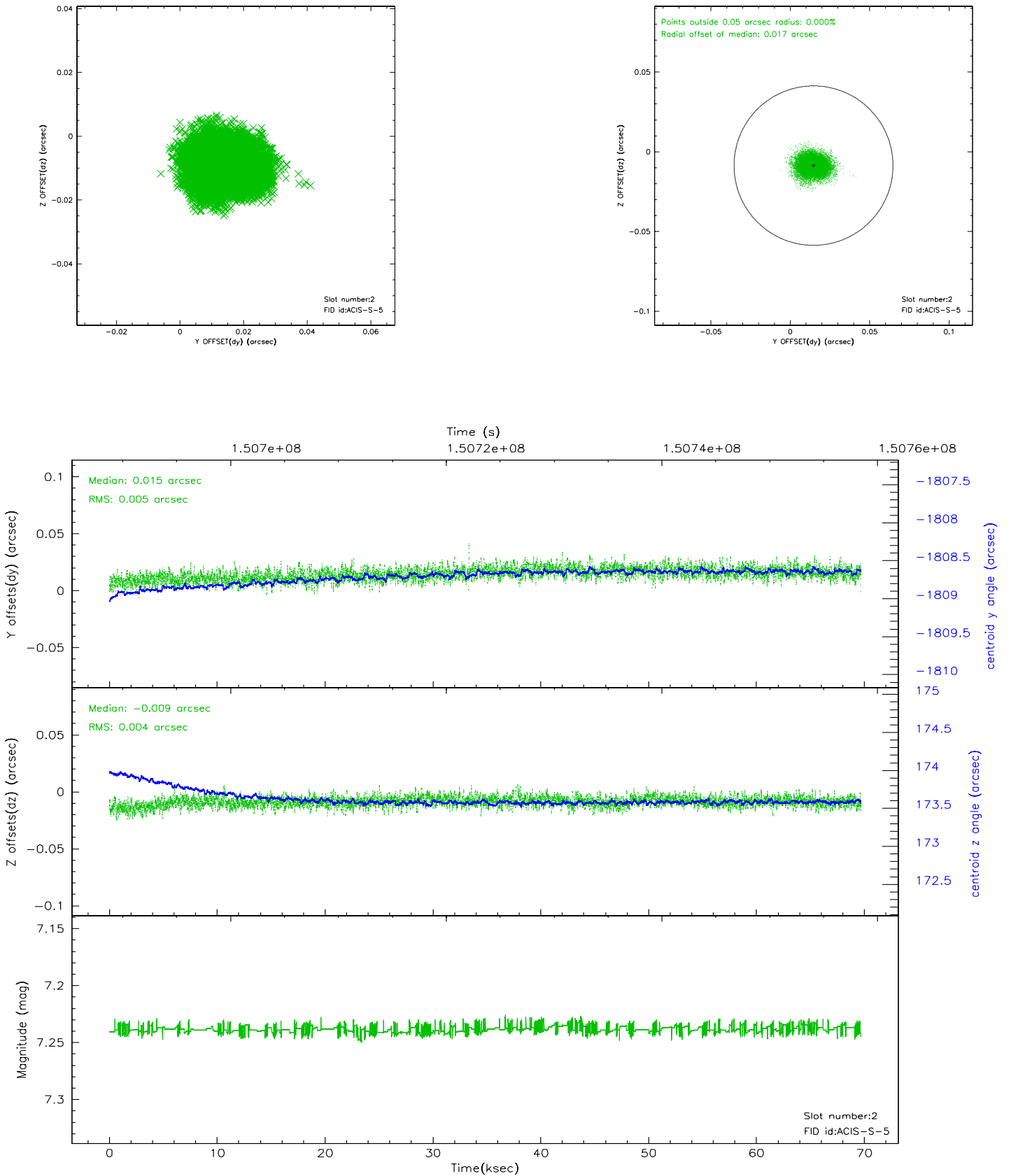
### 2.5.1 Slot 0



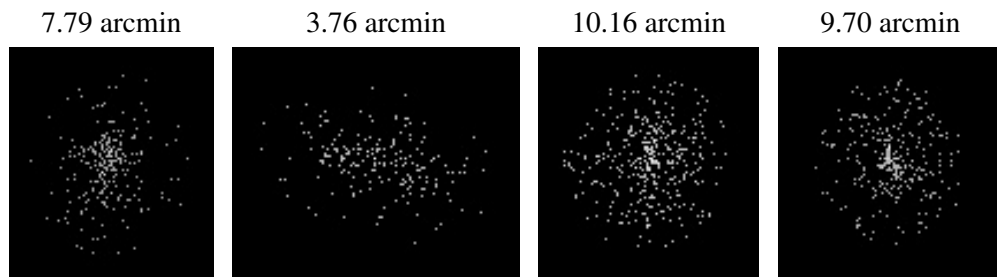
## 2.5.2 Slot 1



### 2.5.3 Slot 2



### 3 Point Sources



# A Summary

## A.1 Status

V&V Scientist	Jen Lauer
V&V Date (YYYY-MM-DD)	2006.10.08
V&V Edition	1
V&V Disposition and Status	OK
V&V Charge Time	69.862

## A.2 Comments

Charge time:

Charge time for this ObsId remains at previous value of 69.862 ks although with the new processing it would have been 69.68 ksec.

Monitor constraint not met, follows obs2737 by < 9.5 days.