

# V&V Reference Report

## L2 ASCDS Version : 7.6.9

Observation 2732 - L2 Version 001  
Chandra X-Ray Center

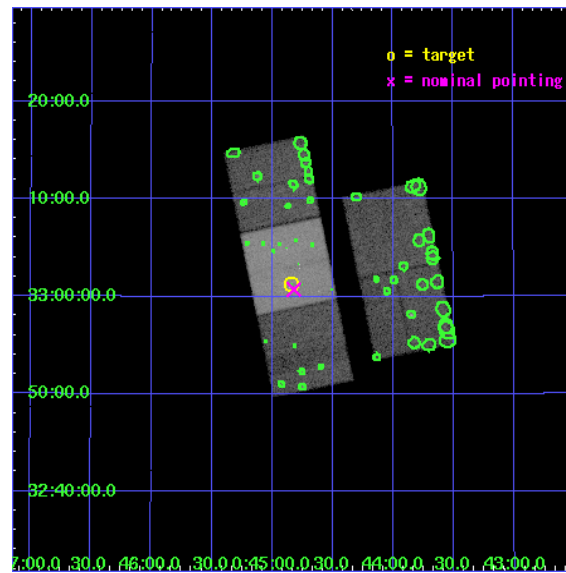
L2 Processing Date : Oct 9 2006

## Contents

<b>1</b>	<b>Front</b>	<b>2</b>
<b>2</b>	<b>OBI</b>	<b>3</b>
2.1	OBI . . . . .	3
2.1.1	Images . . . . .	3
2.1.2	Bias . . . . .	3
2.1.3	Parameters . . . . .	4
2.1.4	Events . . . . .	4
2.2	Compared Parameters . . . . .	5
2.3	Aspect . . . . .	6
2.4	Star Slots . . . . .	9
2.4.1	Slot 3 . . . . .	9
2.4.2	Slot 4 . . . . .	10
2.4.3	Slot 5 . . . . .	11
2.4.4	Slot 6 . . . . .	12
2.4.5	Slot 7 . . . . .	13
2.5	FID Slots . . . . .	14
2.5.1	Slot 0 . . . . .	14
2.5.2	Slot 1 . . . . .	15
2.5.3	Slot 2 . . . . .	16
<b>3</b>	<b>Point Sources</b>	<b>17</b>
<b>A</b>	<b>Summary</b>	<b>18</b>
A.1	Status . . . . .	18
A.2	Comments . . . . .	18

# 1 Front

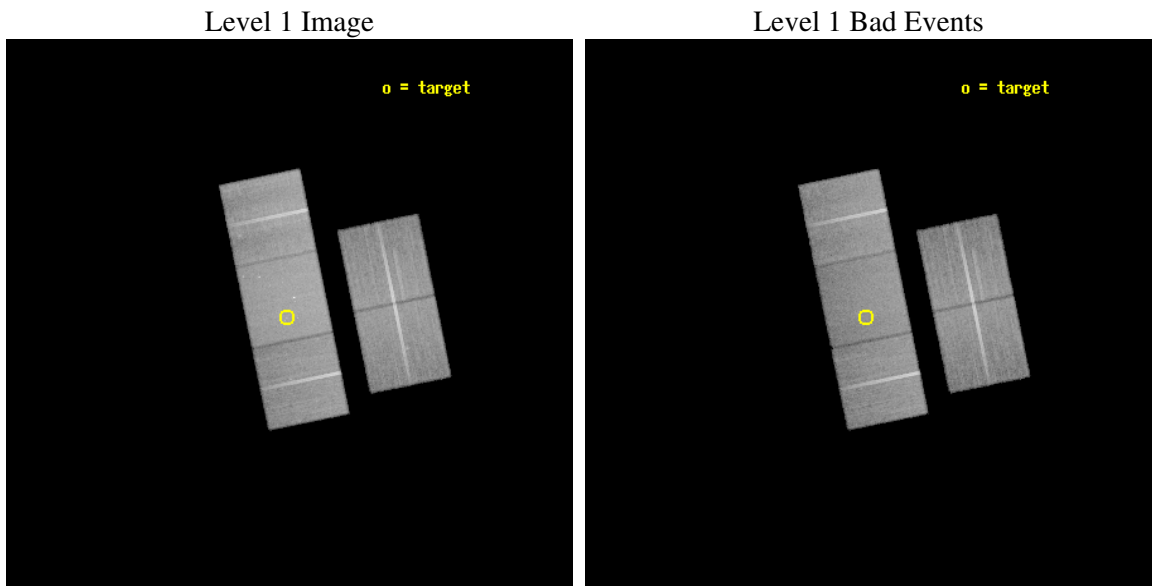
seq_num	400212
obs_id	2732
title	LOCALIZING THE HIGH LATITUDE X-RAY TRANSIENT 4U 0042+32
observer	Dr. John Tomsick
object	4U 0042+32
dtcycle	0
cycle	P
ra_targ	11.209583
dec_targ	33.021389
ra_nom	11.205320420817
dec_nom	33.012395854333
roll_nom	258.38859471691
revision	2
ontime	40129.499922842
livetime	39605.178463442
ontime2	40126.358942628
ontime3	40123.217942476
ontime6	40123.217962414
ontime7	40129.499922842
ontime8	40126.358952612
l2events	254491



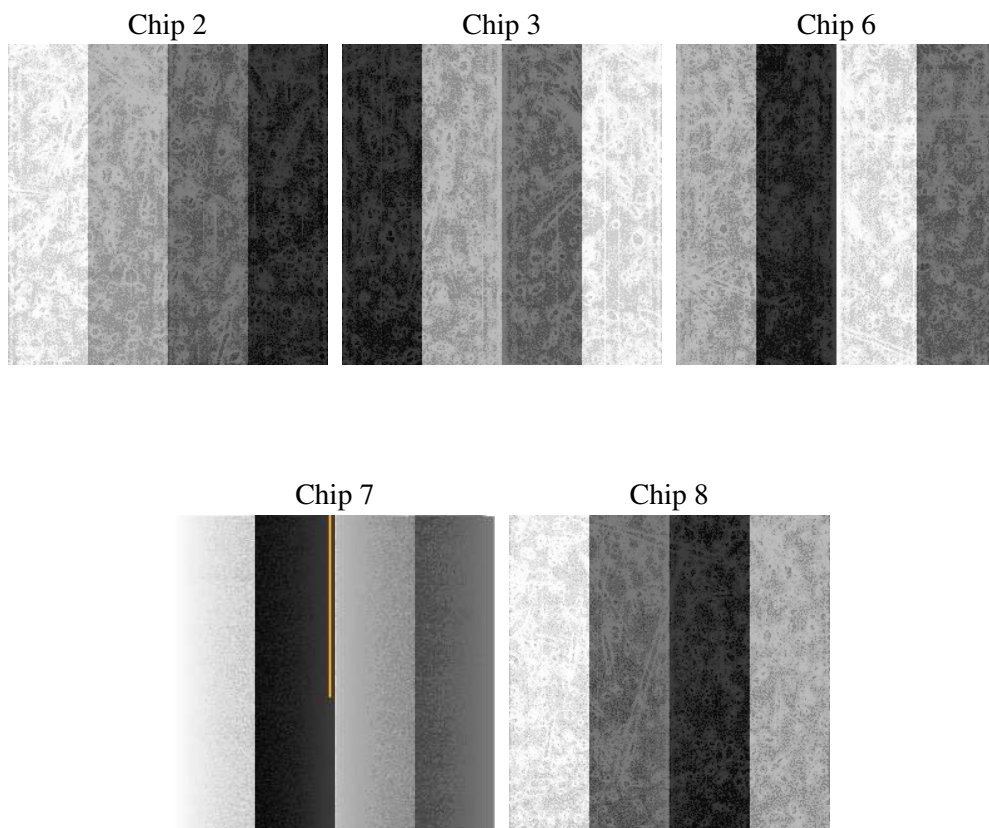
## 2 OBI

### 2.1 OBI

#### 2.1.1 Images



#### 2.1.2 Bias



### 2.1.3 Parameters

obi_num	1
ascdsver	7.6.9
caldbver	3.2.3
date	2006-10-09T15:55:08
revision	2

sched_exp_time	40000.000000
ontime	40264.587565303
ontime2	40261.446565151
ontime3	40258.305565
ontime6	40258.305584937
ontime7	40264.587565303
ontime8	40261.446575135
l1events	1463655

### 2.1.4 Events

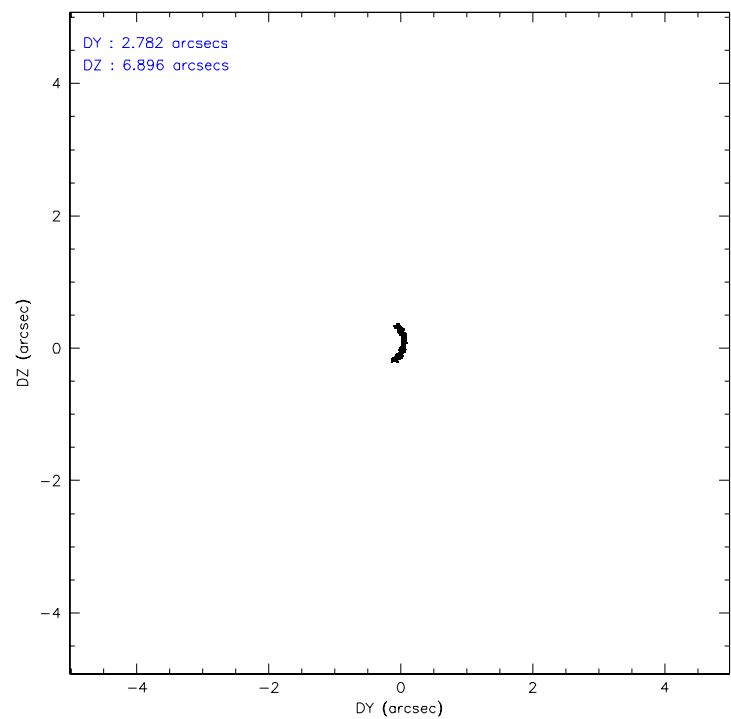
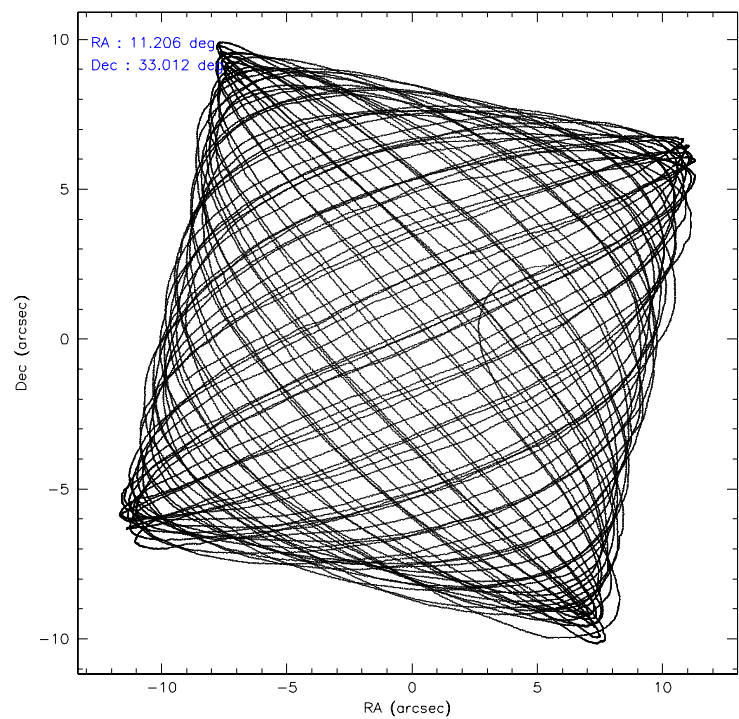
	ccd 2	ccd 3	ccd 6	ccd 7	ccd 8
level 1 events	254709	259931	269045	352521	327449
rejected events	222532	228160	235802	213553	259663
rejected %	87%	87%	87%	60%	79%

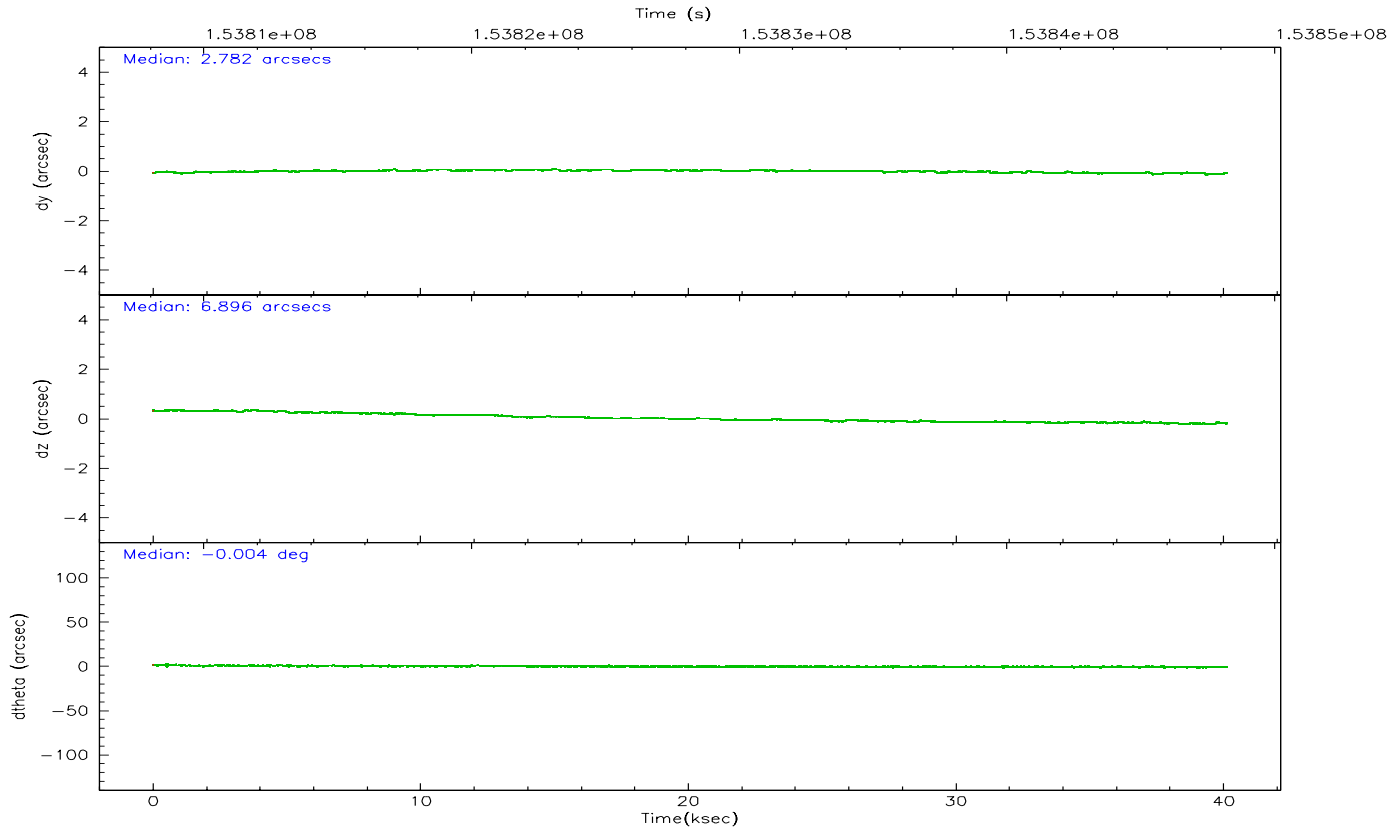
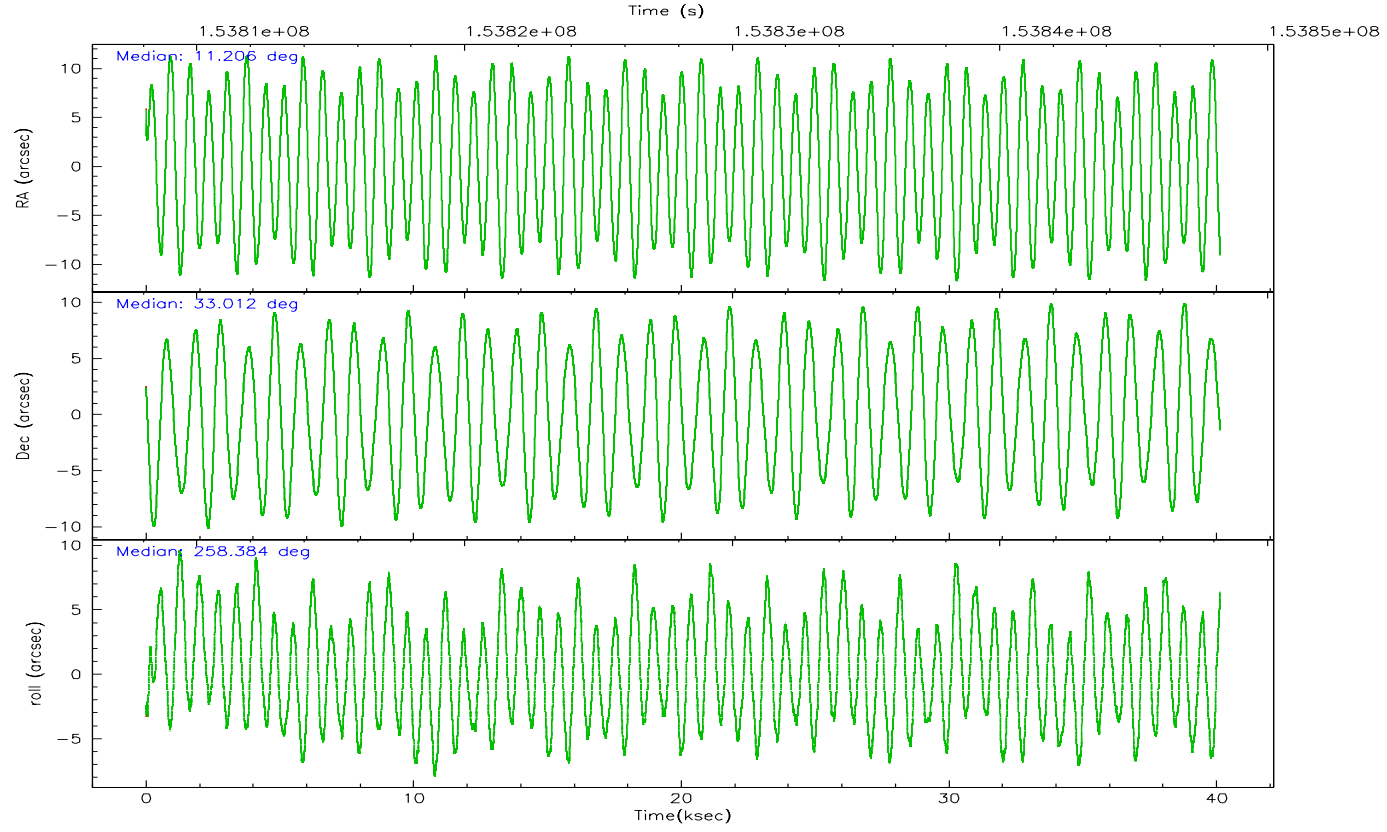
	ccd 2	ccd 3	ccd 6	ccd 7	ccd 8
grade 0 events	15613	14810	14277	8869	23336
	6%	5%	5%	2%	7%
grade 1 events	156	162	142	208	222
	0%	0%	0%	0%	0%
grade 2 events	6150	5875	6608	34057	14436
	2%	2%	2%	9%	4%
grade 3 events	2863	2983	3116	7252	7114
	1%	1%	1%	2%	2%
grade 4 events	2945	3040	3082	7048	6688
	1%	1%	1%	1%	2%
grade 5 events	9529	11004	11536	22807	14748
	3%	4%	4%	6%	4%
grade 6 events	4896	5351	6493	82769	16806
	1%	2%	2%	23%	5%
grade 7 events	212557	216706	223791	189511	244099
	83%	83%	83%	53%	74%

## 2.2 Compared Parameters

Parameter	Planned	Actual	Parameter	Planned	Actual
Instrument	ACIS	ACIS	Obspar format version number	6	6
Detector	ACIS-23678	ACIS-23678	Obspar file type	PREDICTED	ACTUAL
Grating	NONE	NONE	Obspar update status	NONE	UPDATED
Data mode	VFAINT	VFAINT	Number of optional ACIS chips dropped	0	0
Observation mode	POINTING	POINTING	On-chip summing requested	N	N
Pointing RA	11.194647	11.20532042081694	Subarray requested	NONE	NONE
Pointing Dec	33.038128	33.01239585433267	Alternating exposures requested	N	N
Pointing Roll	258.237781	258.3885947169108	Primary exposure time	0.000000	3.1
SIM focus pos (mm)	-0.684267	-0.6828225247311905			
SIM defocus (mm)	0	0.001444936568705701			
SIM translation stage pos (mm)	-190.132523	-190.1400660498719			
SIM translation stage offset (mm)	0	0.00754346686406393			
Observation start time	153808232.184000	153807177.57716			
Observation start date	2002-11-16T04:29:28	2002-11-16T04:12:57			
Observation end time	153848232.184000	153849059.5914			
Observation end date	2002-11-16T15:36:08	2002-11-16T15:50:59			
Read mode	TIMED	TIMED			

2.3 Aspect



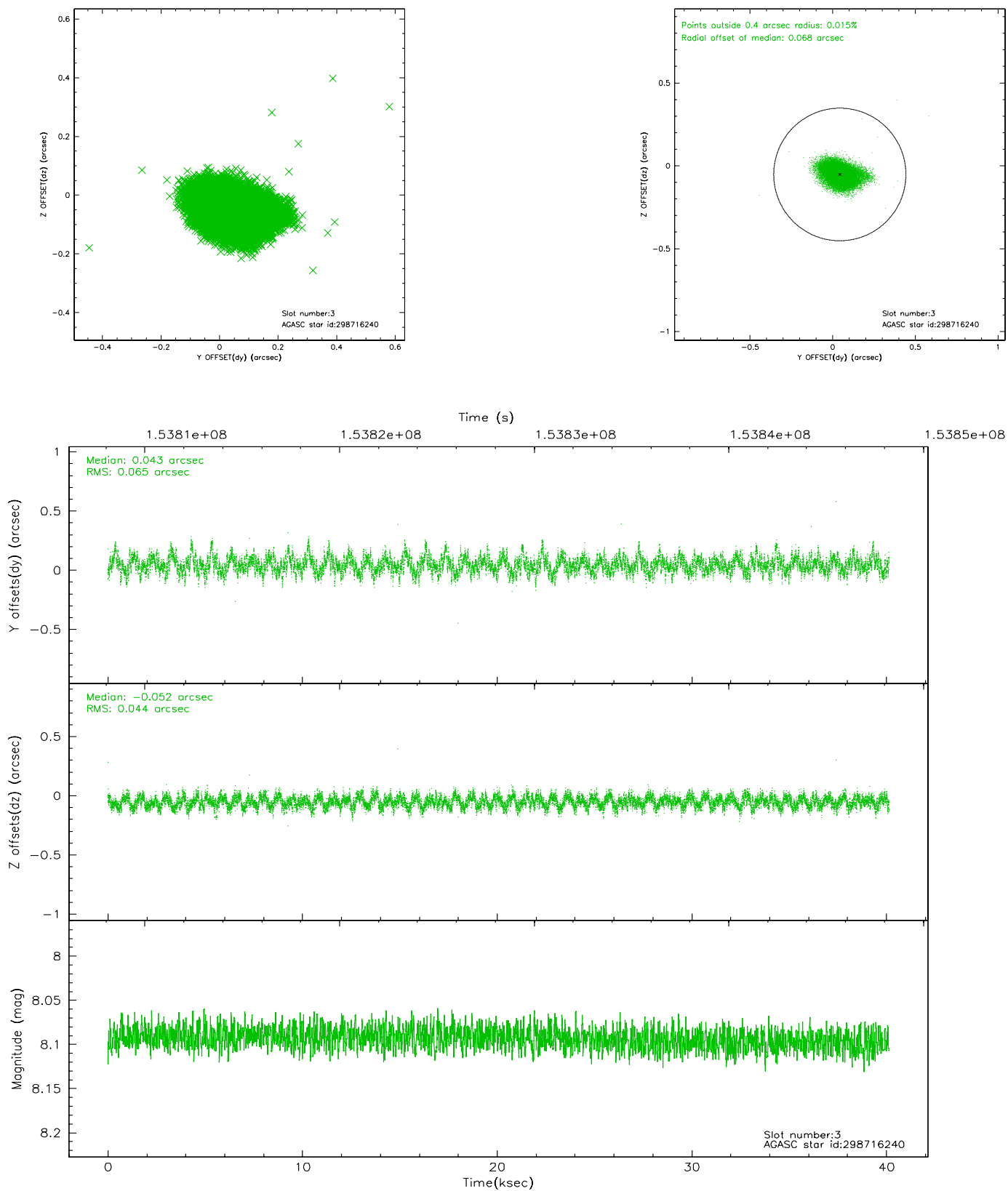


### Slot Statistics

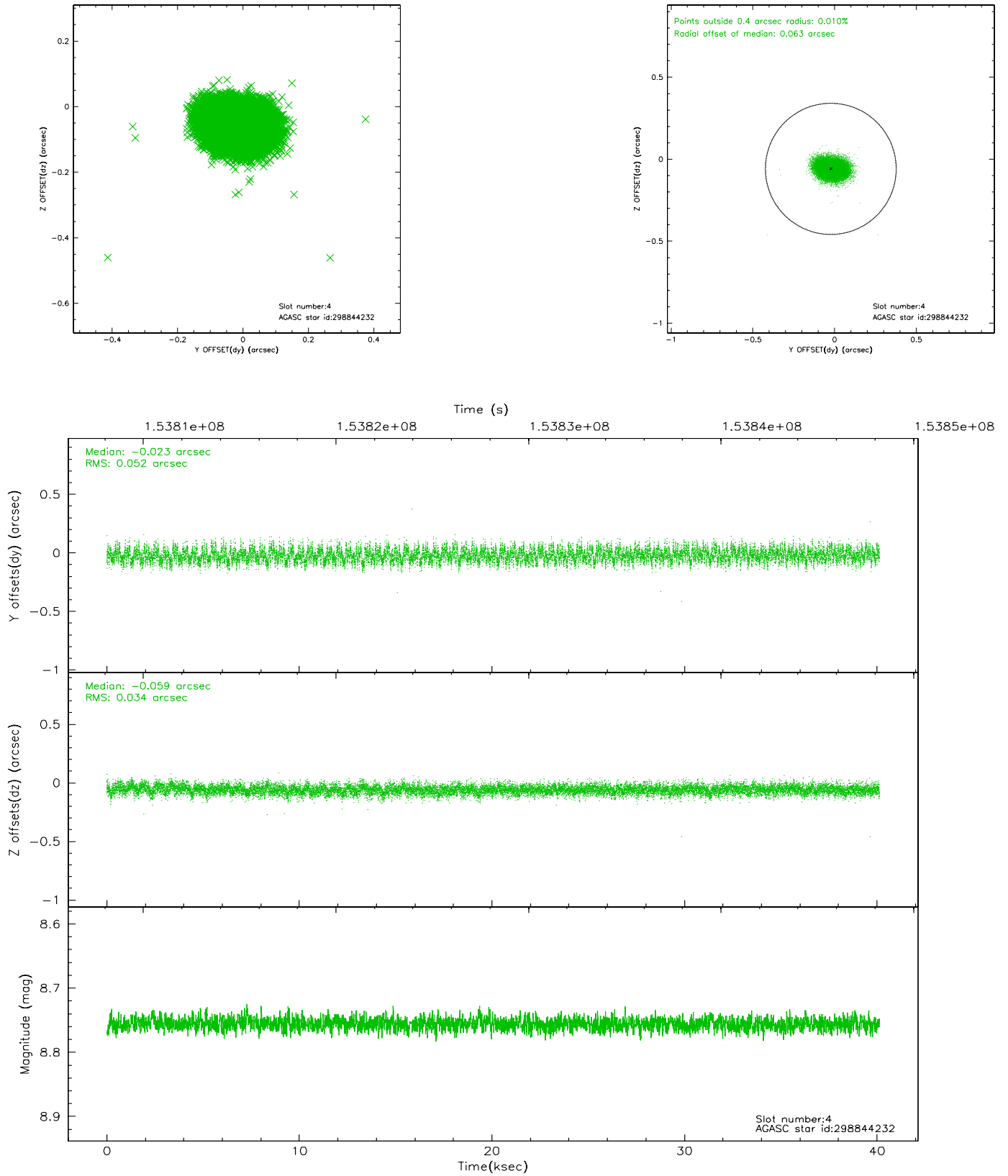
slot	status	id	mag	n_pts	med_dy	med_dz	dr1	dr2	ra	dec	mean_y	mean_z
0	FID	ACIS-S-2	7.12	9790	-0.015	0.022	0.008	0.013	0.000000	0.000000	-755.42	-1728.07
1	FID	ACIS-S-4	7.20	9788	-0.047	0.001	0.006	0.012	0.000000	0.000000	2157.81	180.39
2	FID	ACIS-S-5	7.24	9789	0.031	-0.015	0.007	0.011	0.000000	0.000000	-1808.20	174.04
3	GUIDE	298716240	8.09	19576	0.043	-0.052	0.082	0.138	10.519727	32.611037	1916.36	-1692.71
4	GUIDE	298844232	8.76	19579	-0.023	-0.059	0.066	0.107	11.525885	33.537180	-1962.88	605.14
5	GUIDE	298846320	9.62	19569	0.040	0.026	0.092	0.145	11.568106	32.350684	2189.38	1615.10
6	GUIDE	298717496	9.24	19573	-0.024	0.076	0.084	0.138	11.249293	33.694578	-2346.83	-322.58
7	GUIDE	298846552	8.79	19575	-0.040	0.009	0.063	0.102	11.679811	32.494360	1612.71	1839.60

## 2.4 Star Slots

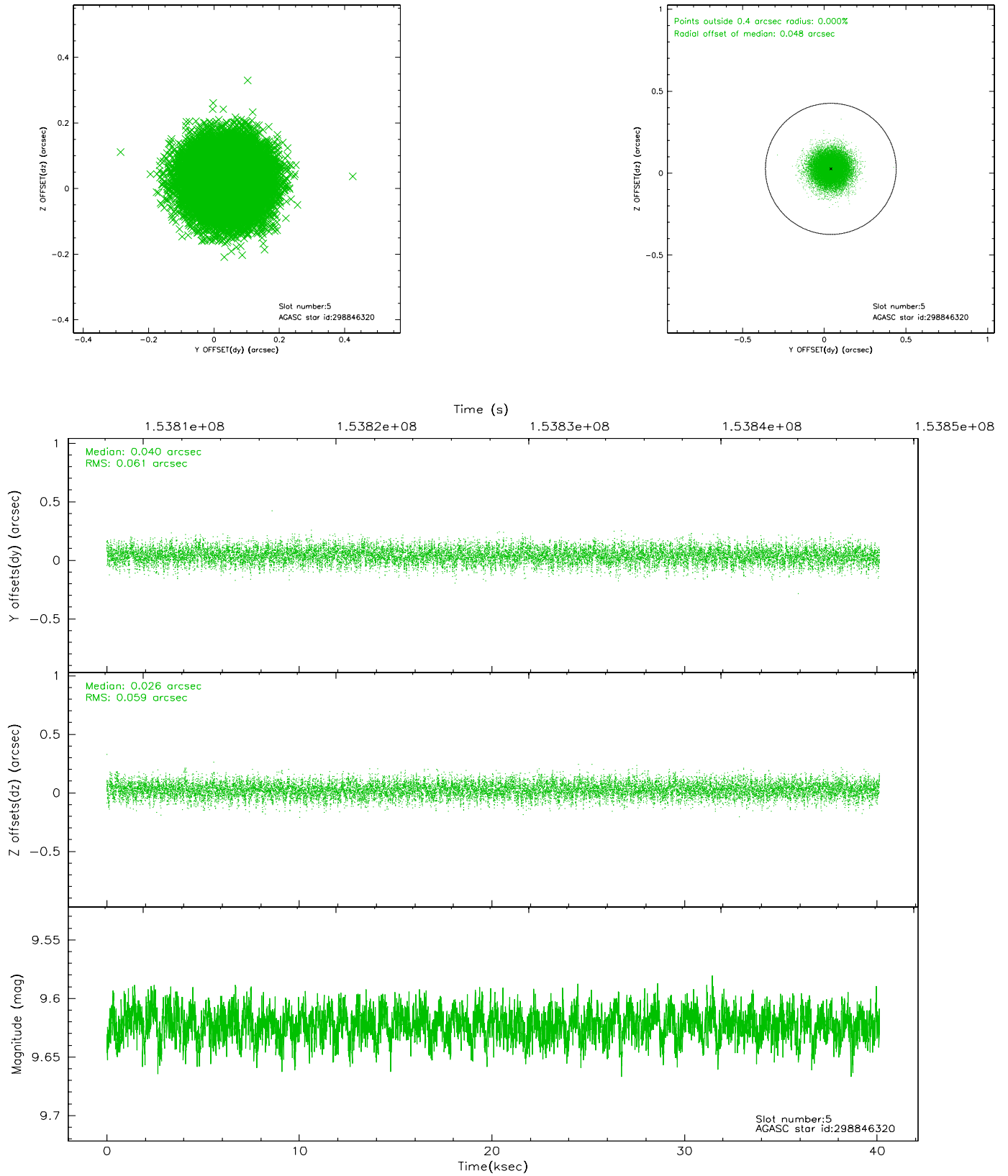
### 2.4.1 Slot 3



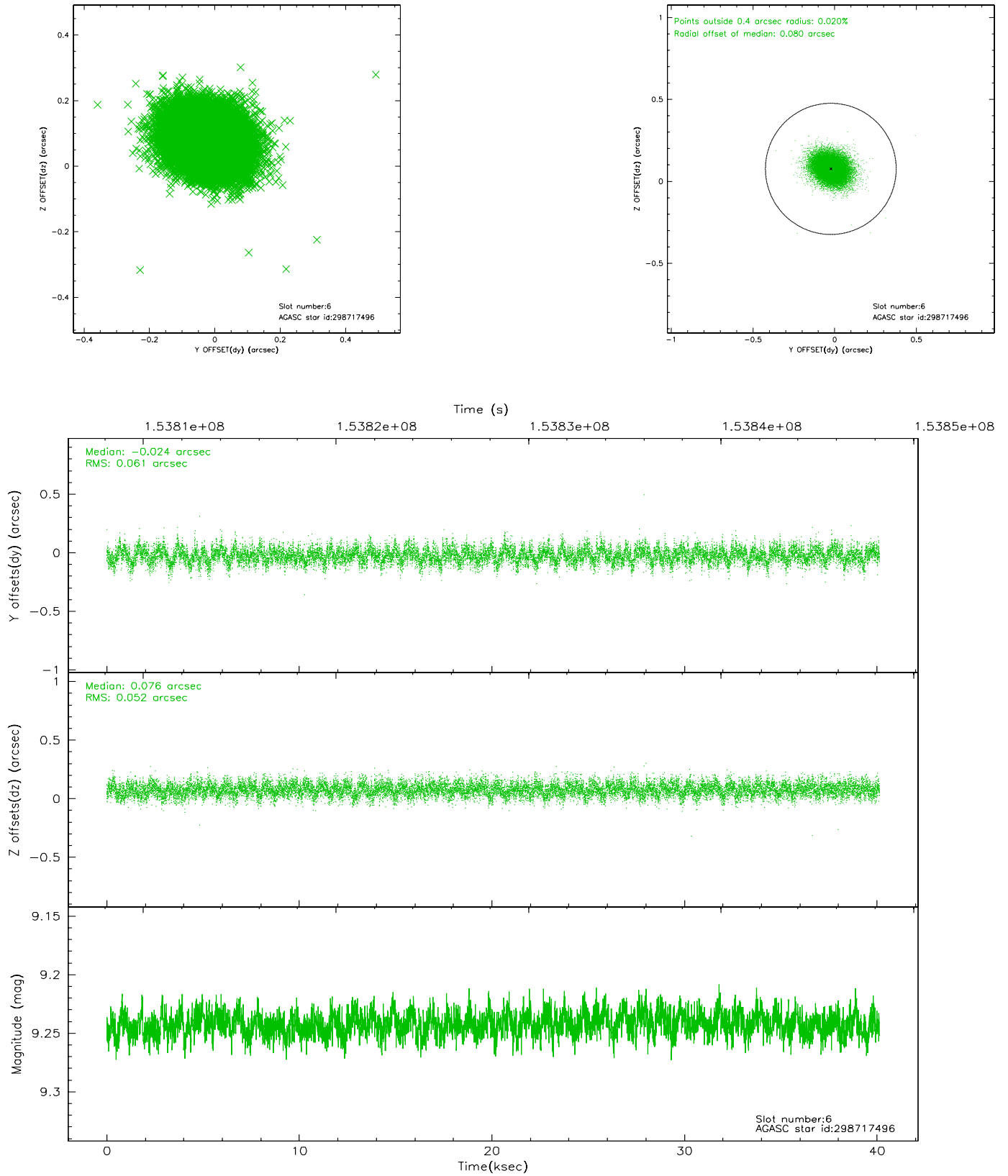
## 2.4.2 Slot 4



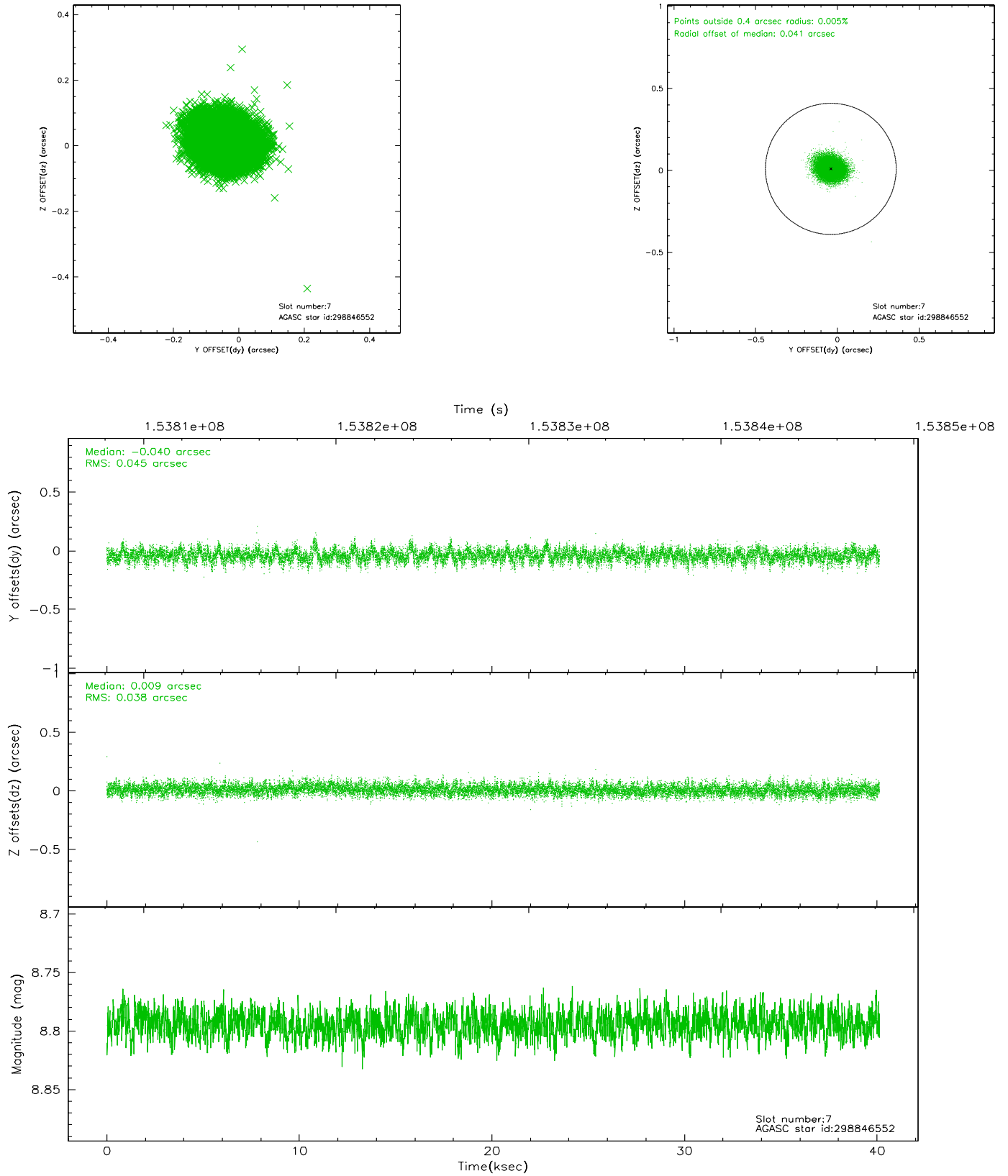
### 2.4.3 Slot 5



## 2.4.4 Slot 6

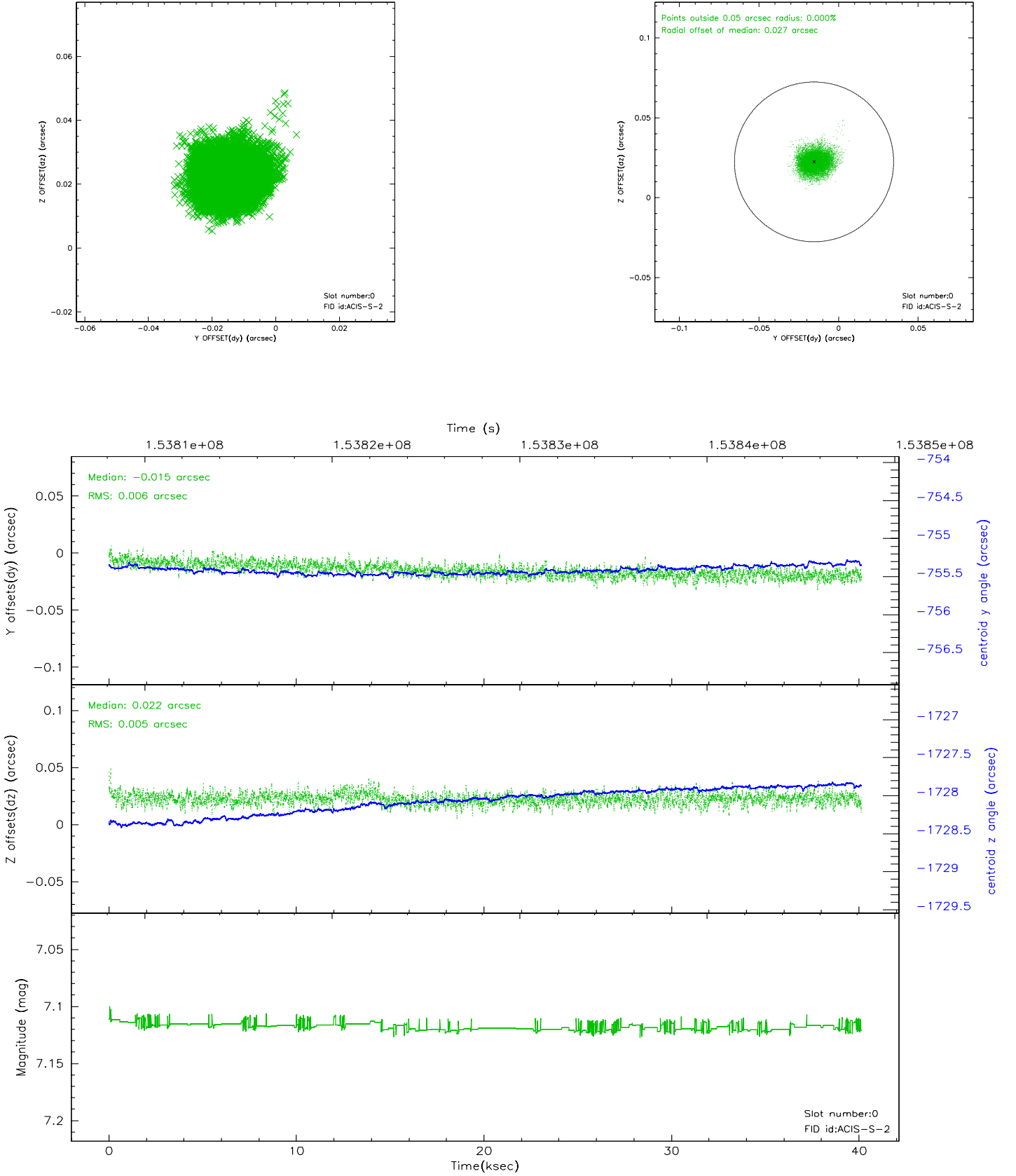


## 2.4.5 Slot 7

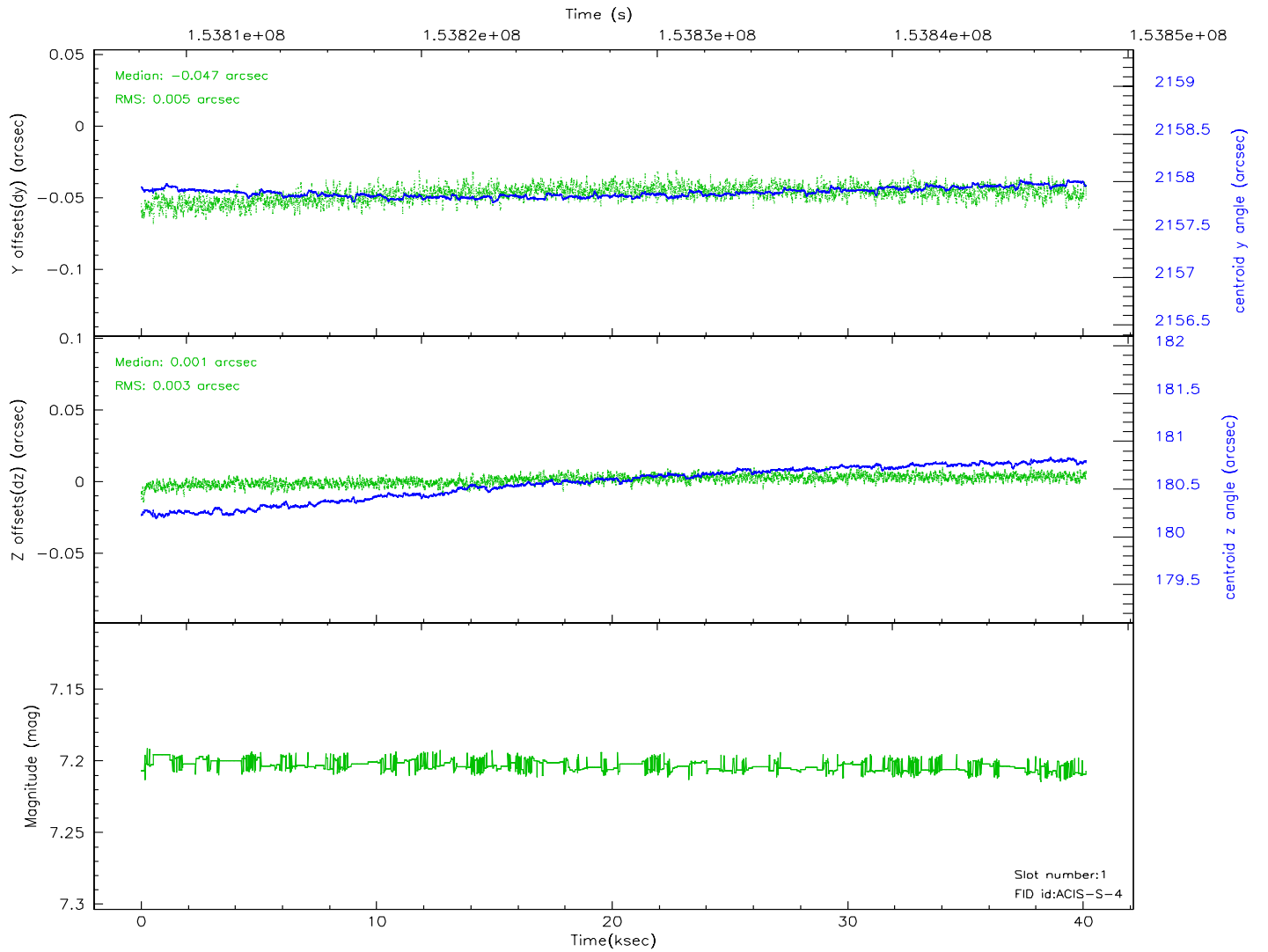
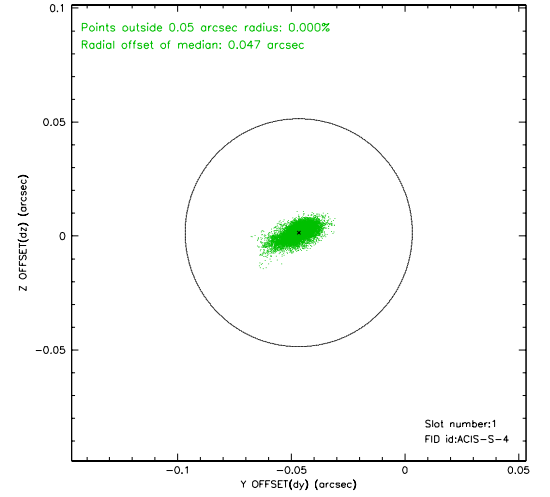
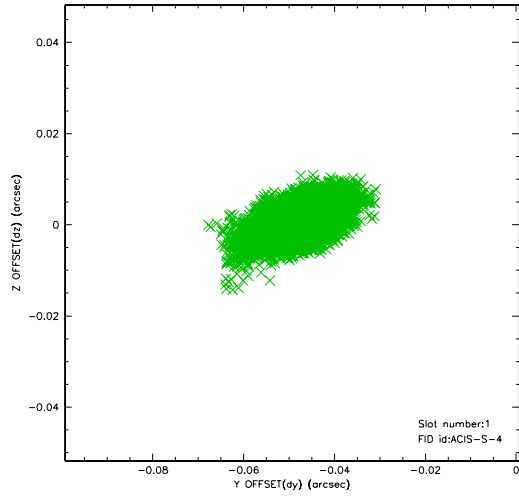


## 2.5 FID Slots

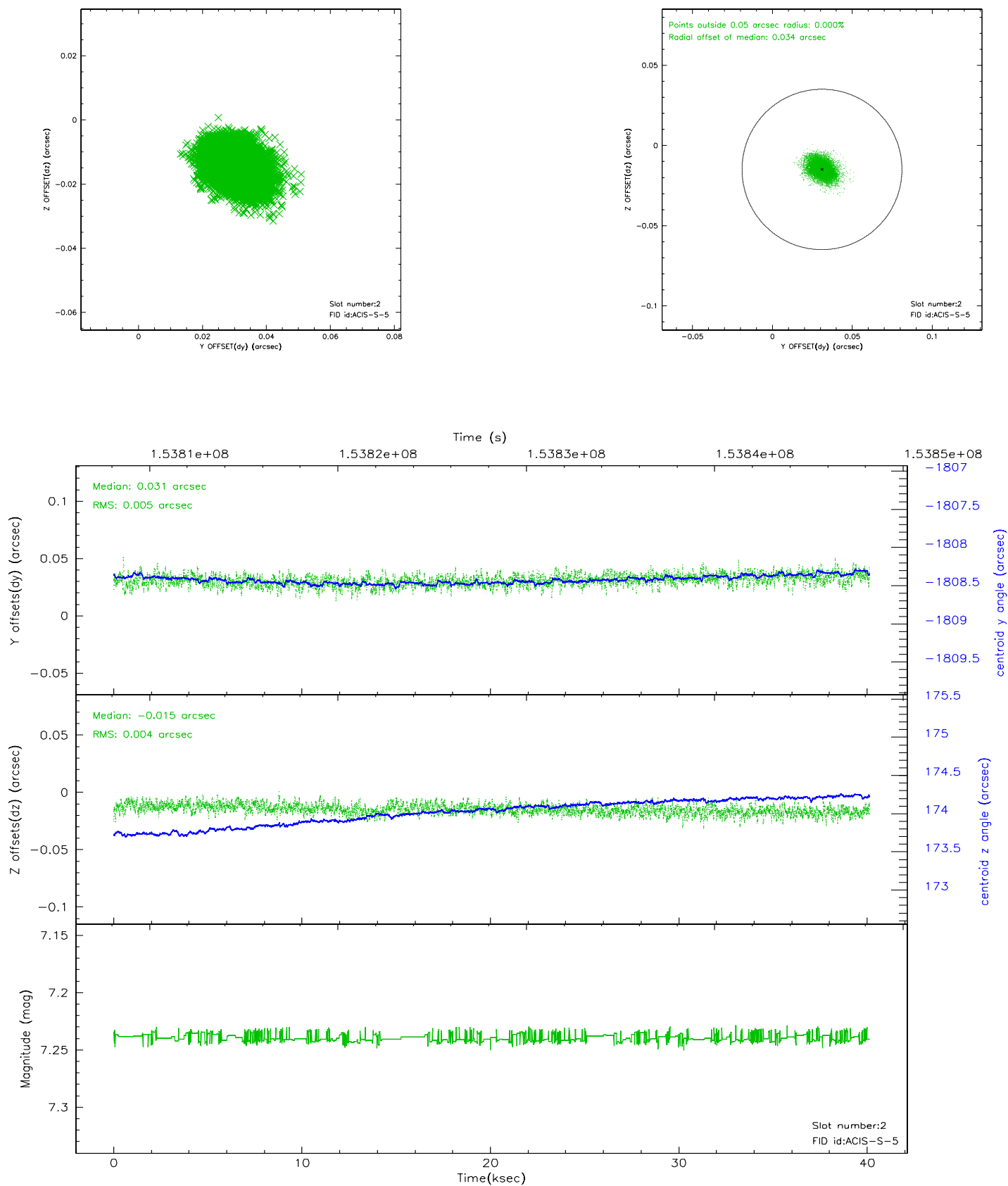
### 2.5.1 Slot 0



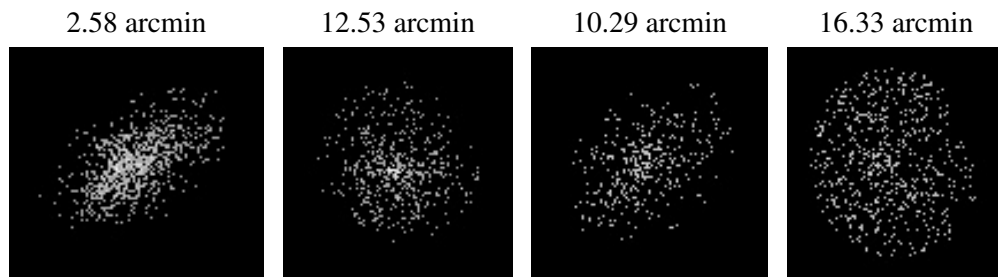
## 2.5.2 Slot 1



### 2.5.3 Slot 2



### 3 Point Sources



## A Summary

### A.1 Status

V&V Scientist	Beth Sundheim
V&V Date (YYYY-MM-DD)	2006.10.10
V&V Edition	1
V&V Disposition and Status	OK
V&V Charge Time	40.129

### A.2 Comments