

V&V Reference Report

L2 ASCDS Version : 7.6.9

Observation 2727 - L2 Version 3
Chandra X-Ray Center

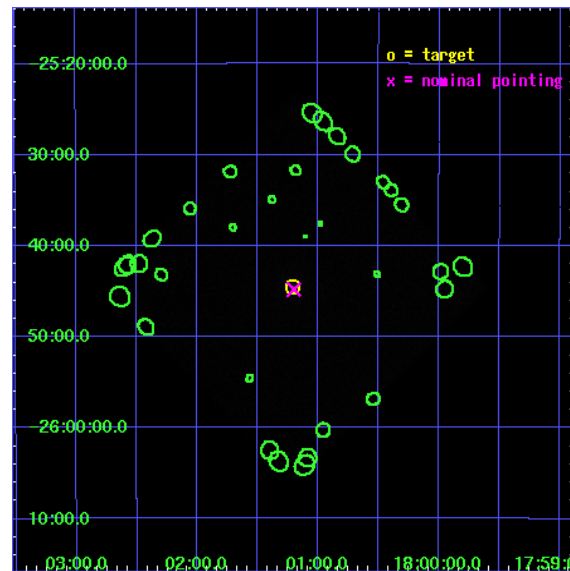
L2 Processing Date : Nov 21 2007

Contents

1	Front	2
2	OBI	3
2.1	OBI	3
2.1.1	Images	3
2.1.2	Parameters	4
2.1.3	Events	4
2.2	Compared Parameters	5
2.3	Aspect	6
2.4	Star Slots	9
2.4.1	Slot 3	9
2.4.2	Slot 4	10
2.4.3	Slot 5	11
2.4.4	Slot 6	12
2.4.5	Slot 7	13
2.5	FID Slots	14
2.5.1	Slot 0	14
2.5.2	Slot 1	15
2.5.3	Slot 2	16
3	Point Sources	17
A	Summary	18
A.1	Status	18
A.2	Comments	18

1 Front

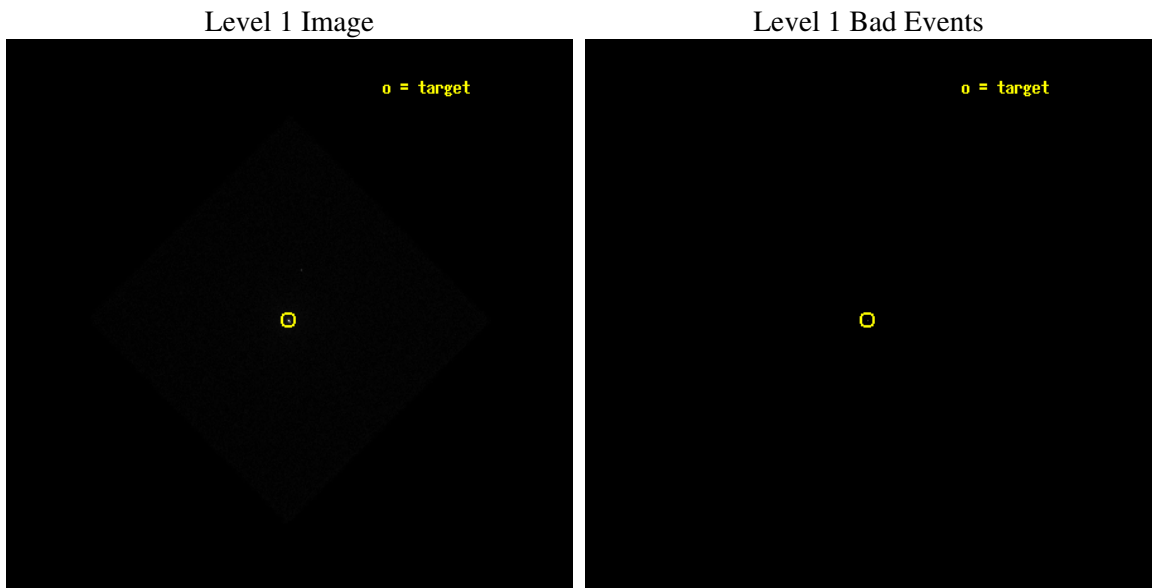
seq_num	400207
obs_id	2727
title	MONITORING THE MORPHOLOGY OF THE MICRO-QUASARS GRS 1758-258 AND 1E 1740.7-2942
observer	Dr. William Heindl
object	GRS 1758-258
ra_targ	270.301667
dec_targ	-25.743306
ra_nom	270.29999550229
dec_nom	-25.747028760543
roll_nom	270.32770647194
revision	3
ontime	9983.5004127622
livetime	9927.1589514532
l2events	327266



2 OBI

2.1 OBI

2.1.1 Images



2.1.2 Parameters

obi_num	0
ascdsver	7.6.11.2
caldbver	3.4.1
date	2007-11-21T23:33:34
revision	3

sched_exp_time	10000.000000
ontime	9983.5004127622
l1events	465161

2.1.3 Events

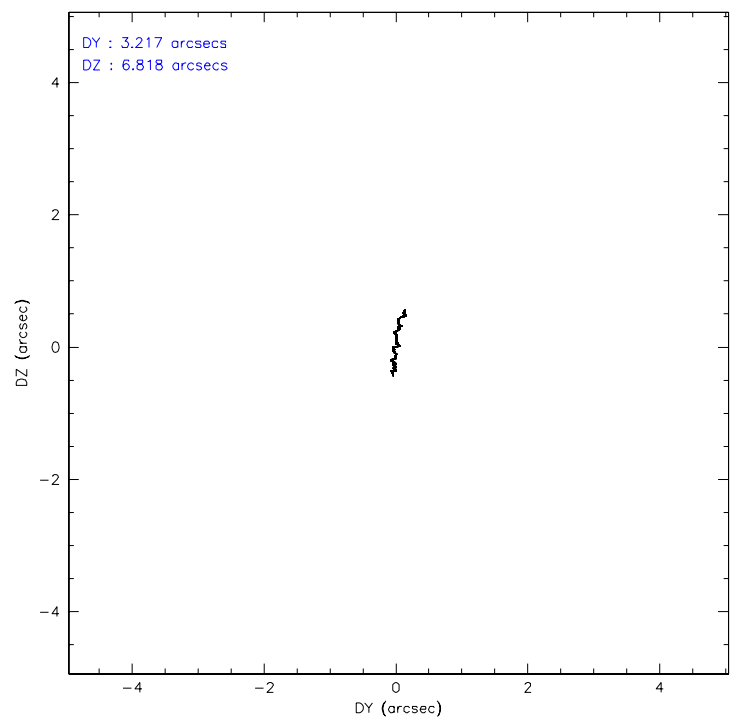
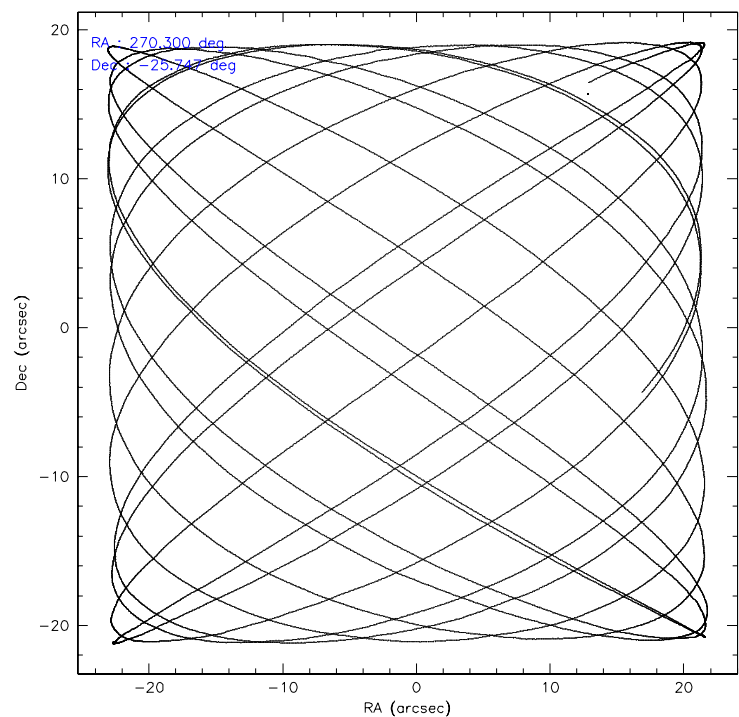
Level 1 Events

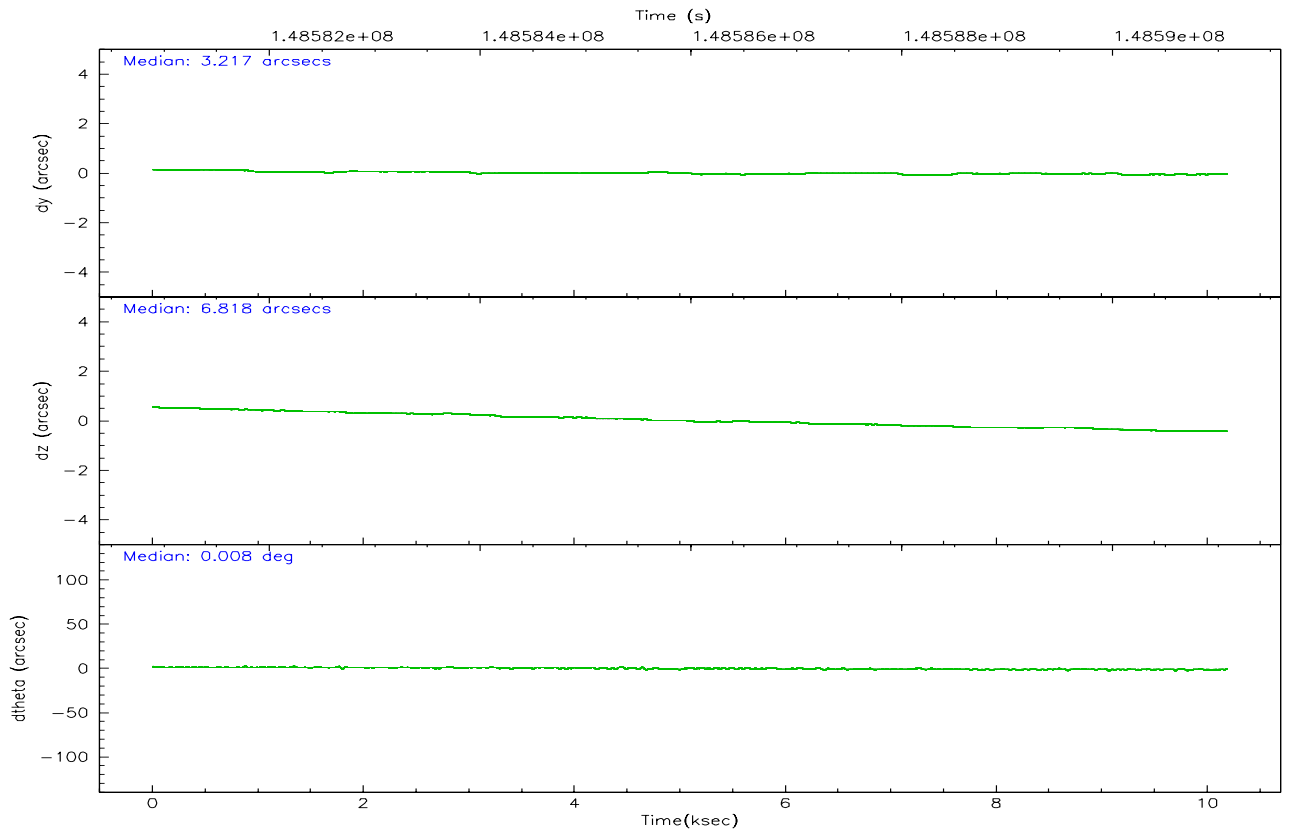
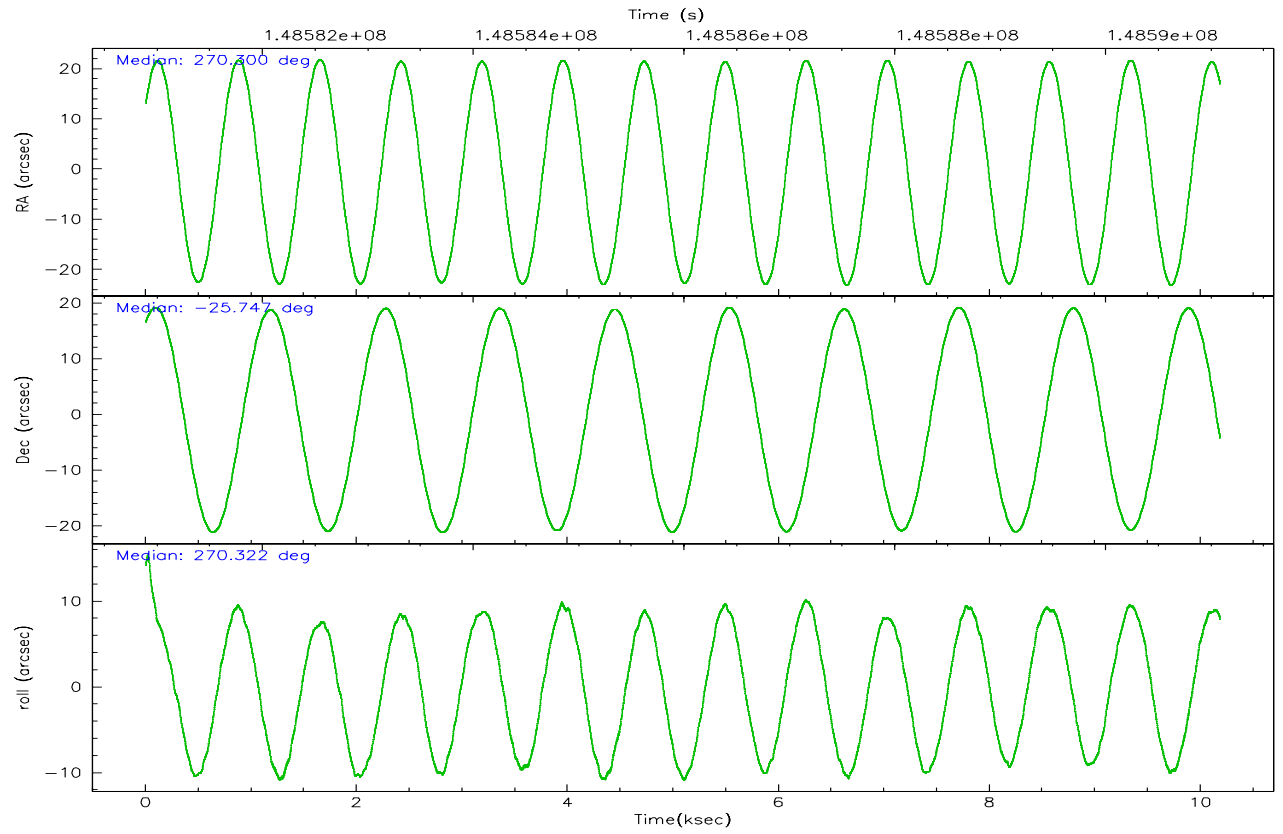
	segment 0
level 1 events	465161
rejected events	2255
rejected %	0%

2.2 Compared Parameters

Parameter	Planned	Actual	Parameter	Planned	Actual
Instrument	HRC	HRC	Obspar format version number	6	6
Detector	HRC-I	HRC-I	Obspar file type	PREDICTED	ACTUAL
Grating	NONE	NONE	Obspar update status	NONE	UPDATED
Data mode	OBSERVING	OBSERVING			
Observation mode	POINTING	POINTING			
Pointing RA	270.284121	270.2999955022906			
Pointing Dec	-25.724095	-25.7470287605427			
Pointing Roll	270.416300	270.3277064719411			
SIM focus pos (mm)	-1.040293	-1.038866356238299			
SIM defocus (mm)	0	0.001426264420575141			
SIM translation stage pos (mm)	126.985494	126.9829799899862			
SIM translation stage offset (mm)	0	0.002508901615314585			
Observation start time	148581086.184000	148580656.23531			
Observation start date	2002-09-16T16:30:22	2002-09-16T16:24:16			
Observation end time	148591086.184000	148591772.36077			
Observation end date	2002-09-16T19:17:02	2002-09-16T19:29:32			

2.3 Aspect



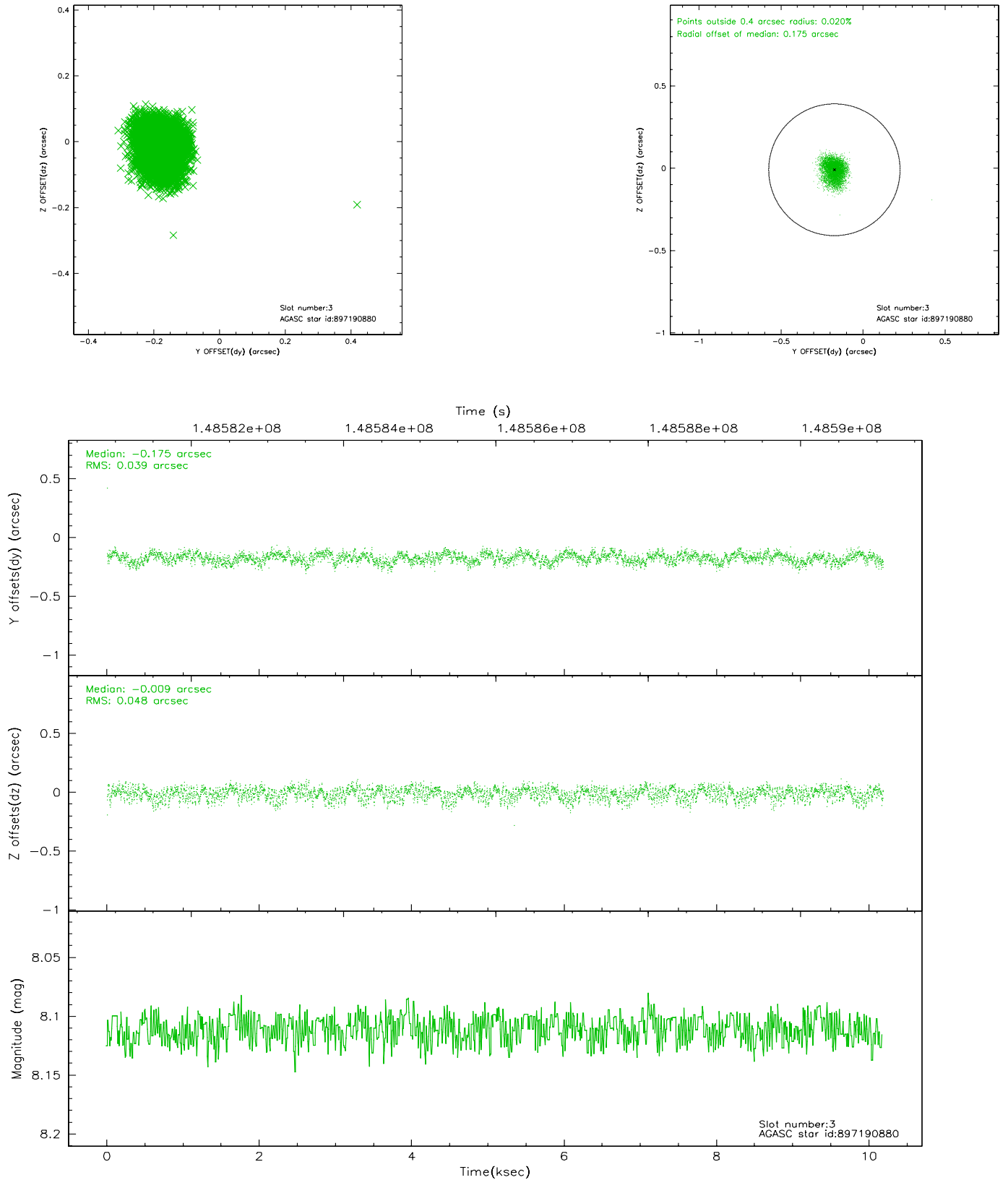


Slot Statistics

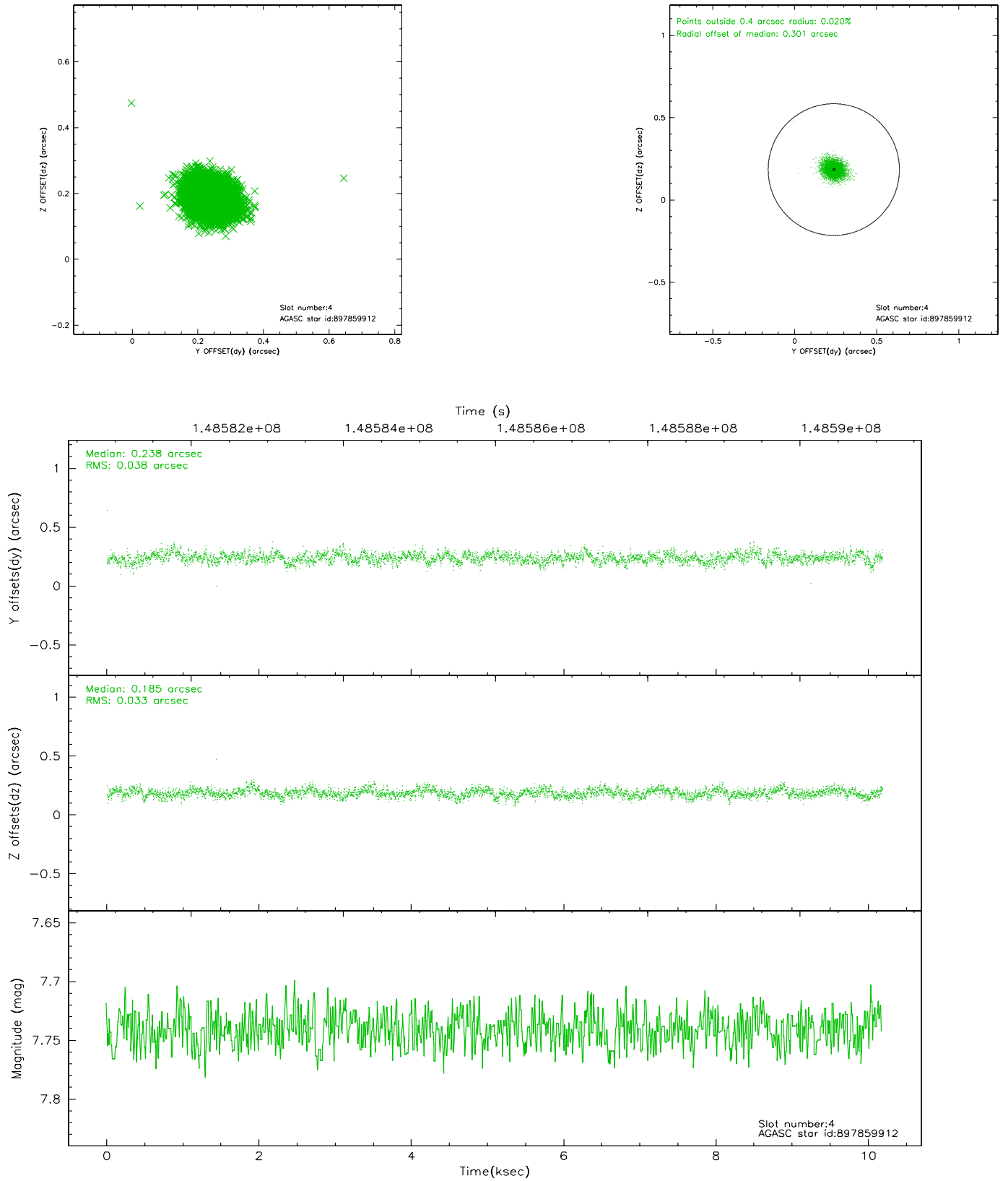
slot	status	id	mag	n_pts	med_dy	med_dz	dr1	dr2	ra	dec	mean_y	mean_z
0	FID	HRC-I-1	6.99	2484	0.017	0.011	0.010	0.017	0.000000	0.000000	-758.67	-1294.69
1	FID	HRC-I-2	7.02	2484	0.084	-0.062	0.013	0.024	0.000000	0.000000	853.73	-1296.82
2	FID	HRC-I-3	7.07	2484	0.020	-0.037	0.013	0.023	0.000000	0.000000	-1186.84	1009.30
3	GUIDE	897190880	8.11	4965	-0.175	-0.009	0.066	0.105	269.584058	-25.142408	-2104.46	-2266.36
4	GUIDE	897859912	7.74	4968	0.238	0.185	0.052	0.086	270.849161	-26.319822	2161.59	1807.87
5	GUIDE	897324032	8.72	4968	-0.141	-0.140	0.056	0.094	270.314237	-25.107248	-2219.45	114.57
6	GUIDE	897188560	8.34	4969	0.060	-0.023	0.066	0.103	269.612088	-26.091773	1313.43	-2182.05
7	GUIDE	897322760	8.57	4968	0.012	-0.010	0.084	0.127	270.988015	-25.669699	-172.62	2284.84

2.4 Star Slots

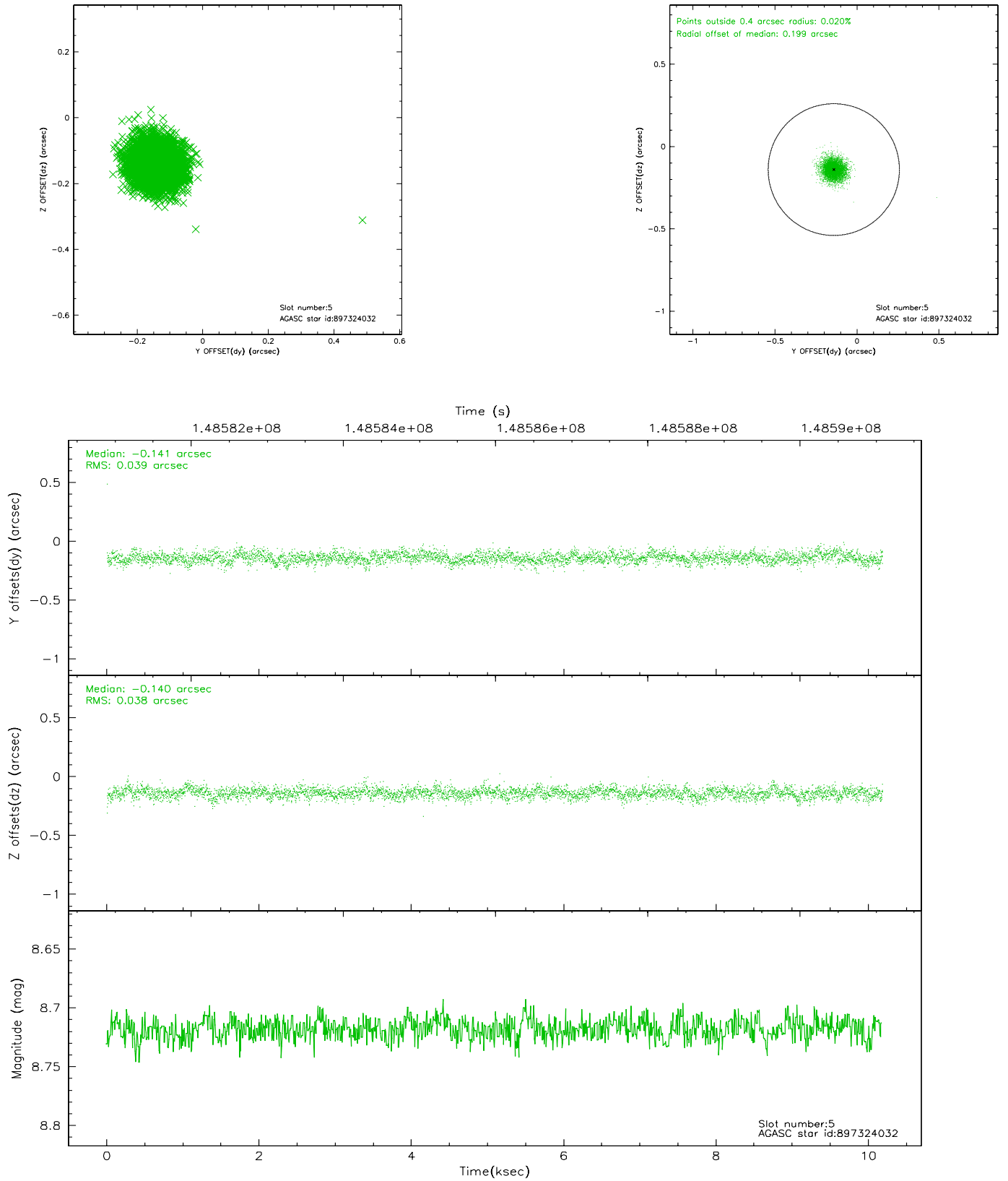
2.4.1 Slot 3



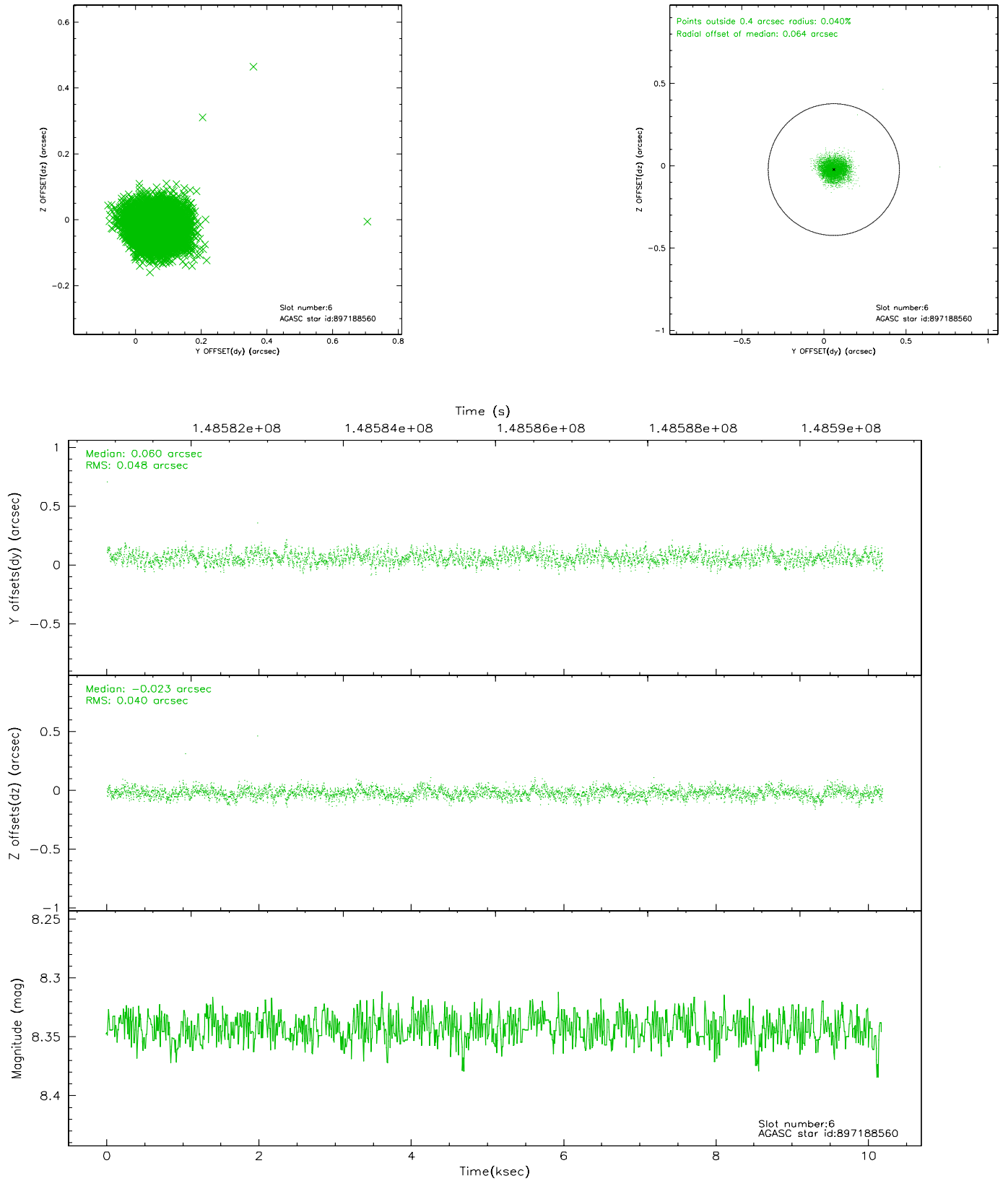
2.4.2 Slot 4



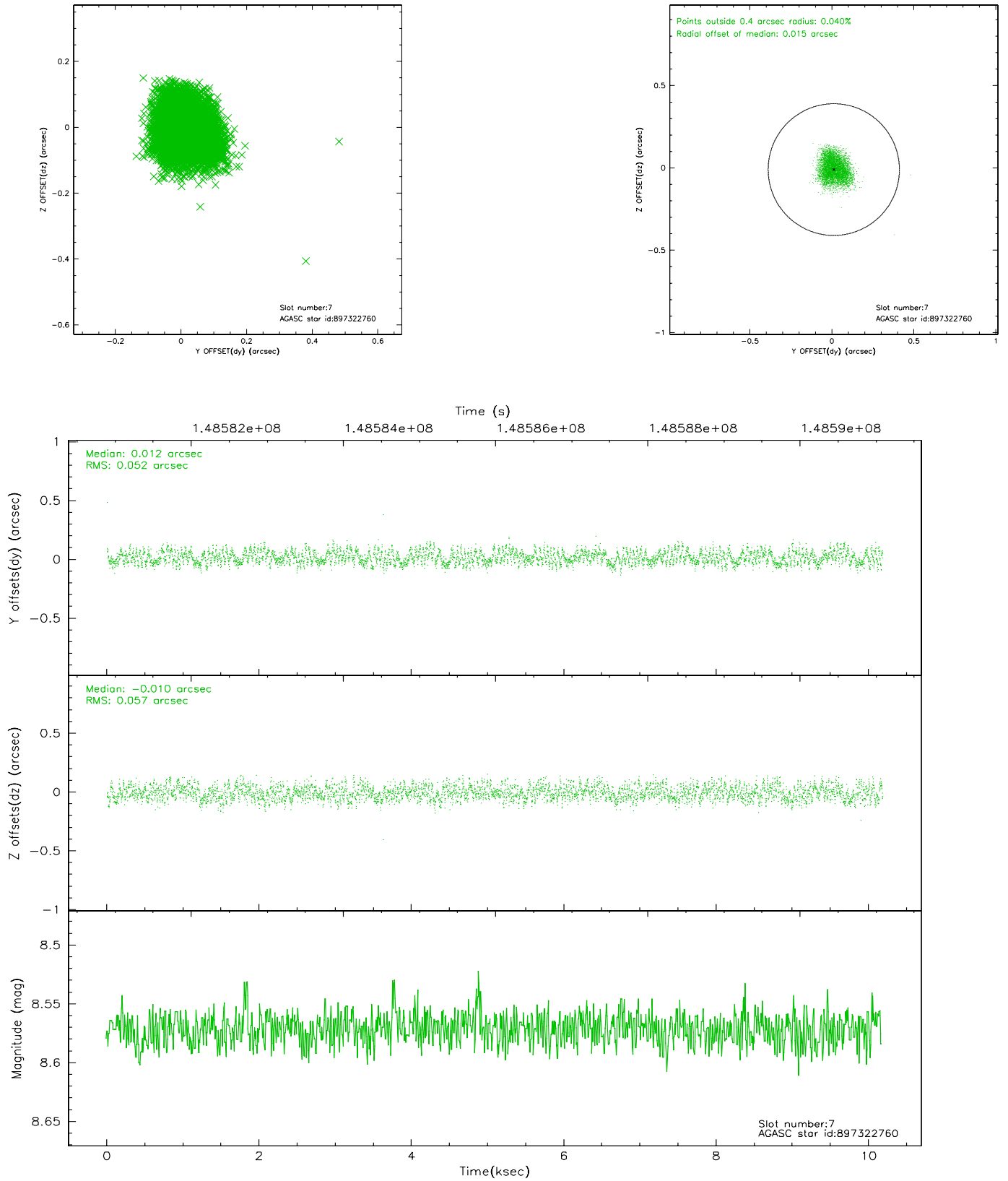
2.4.3 Slot 5



2.4.4 Slot 6

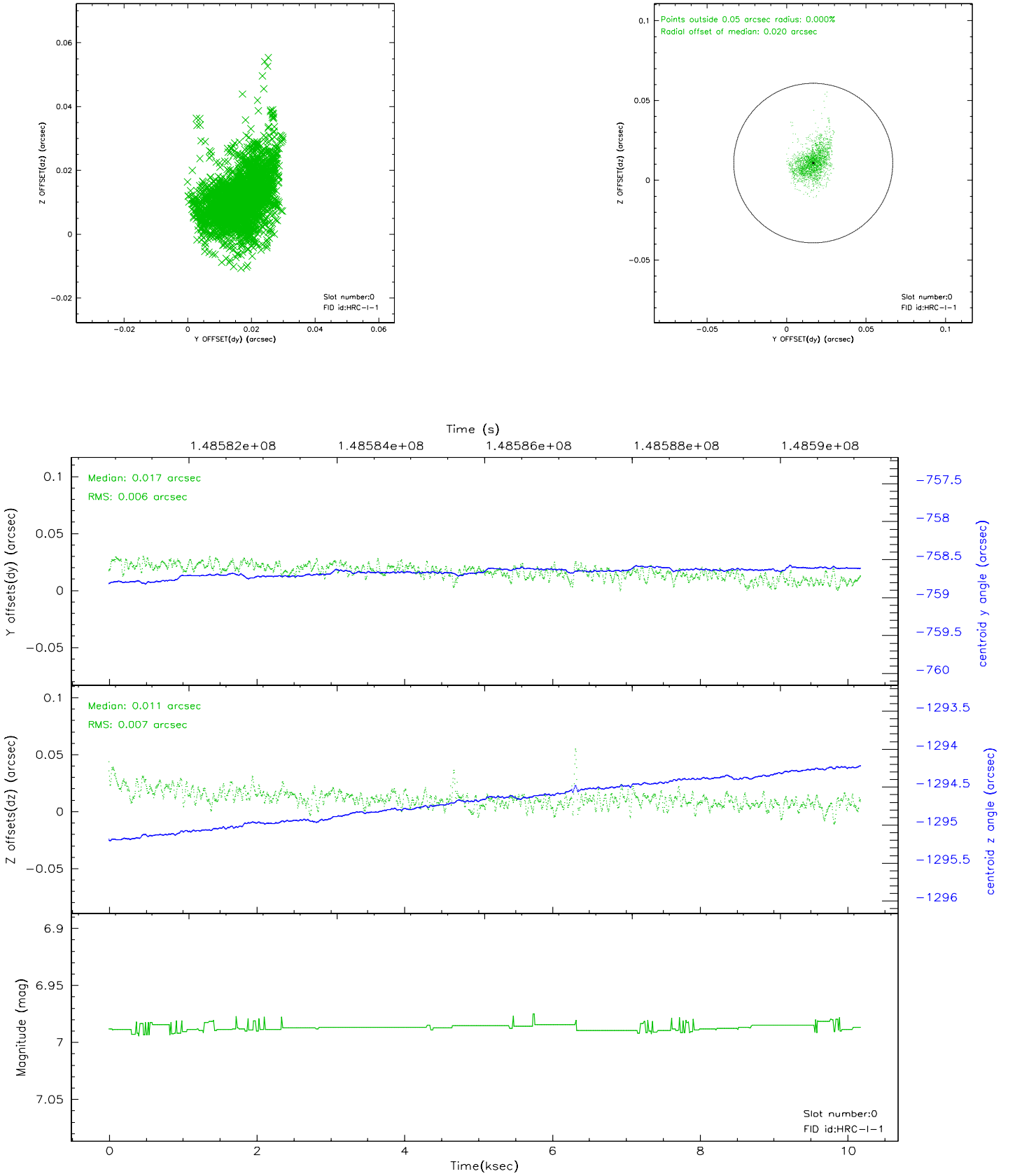


2.4.5 Slot 7

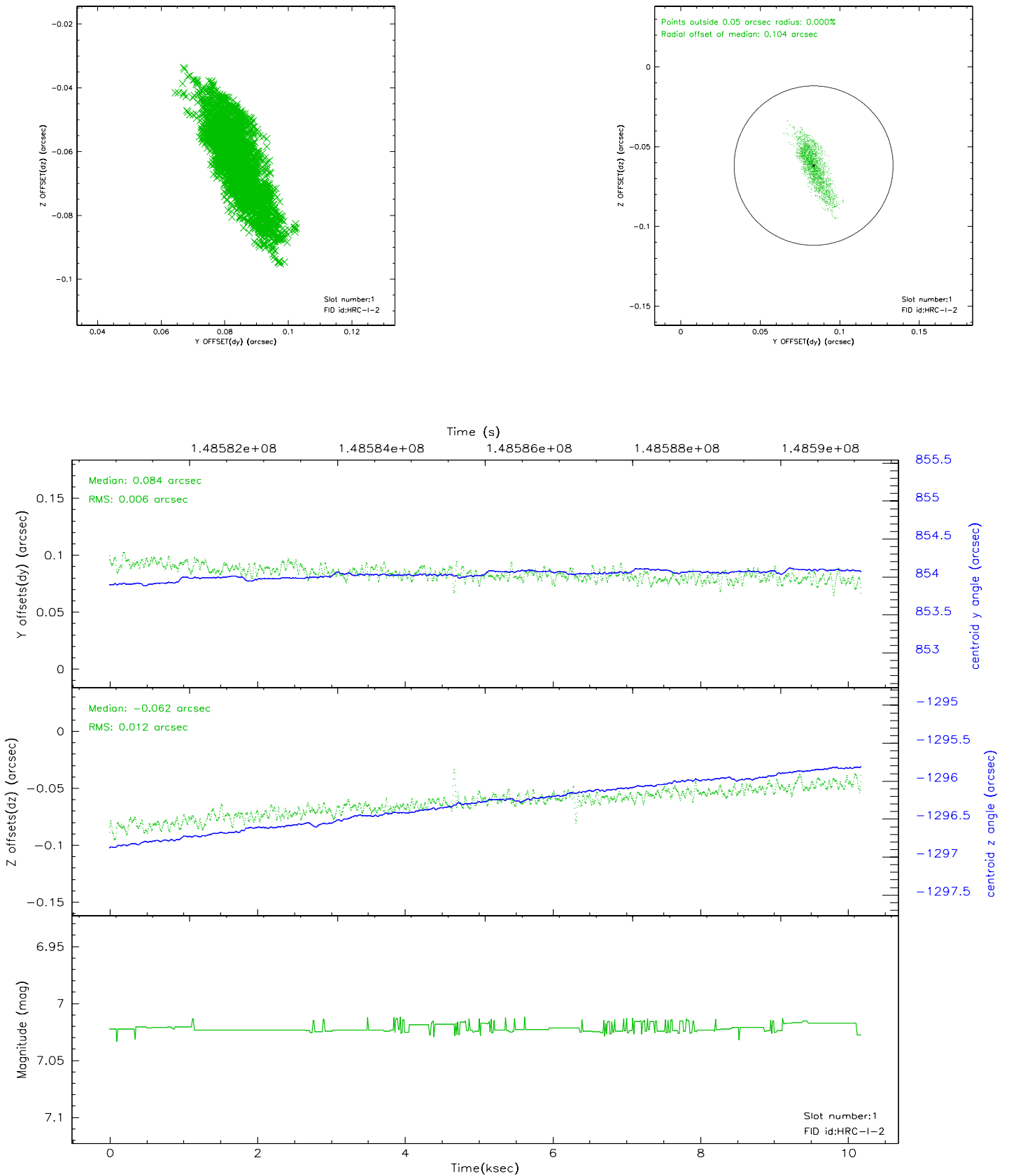


2.5 FID Slots

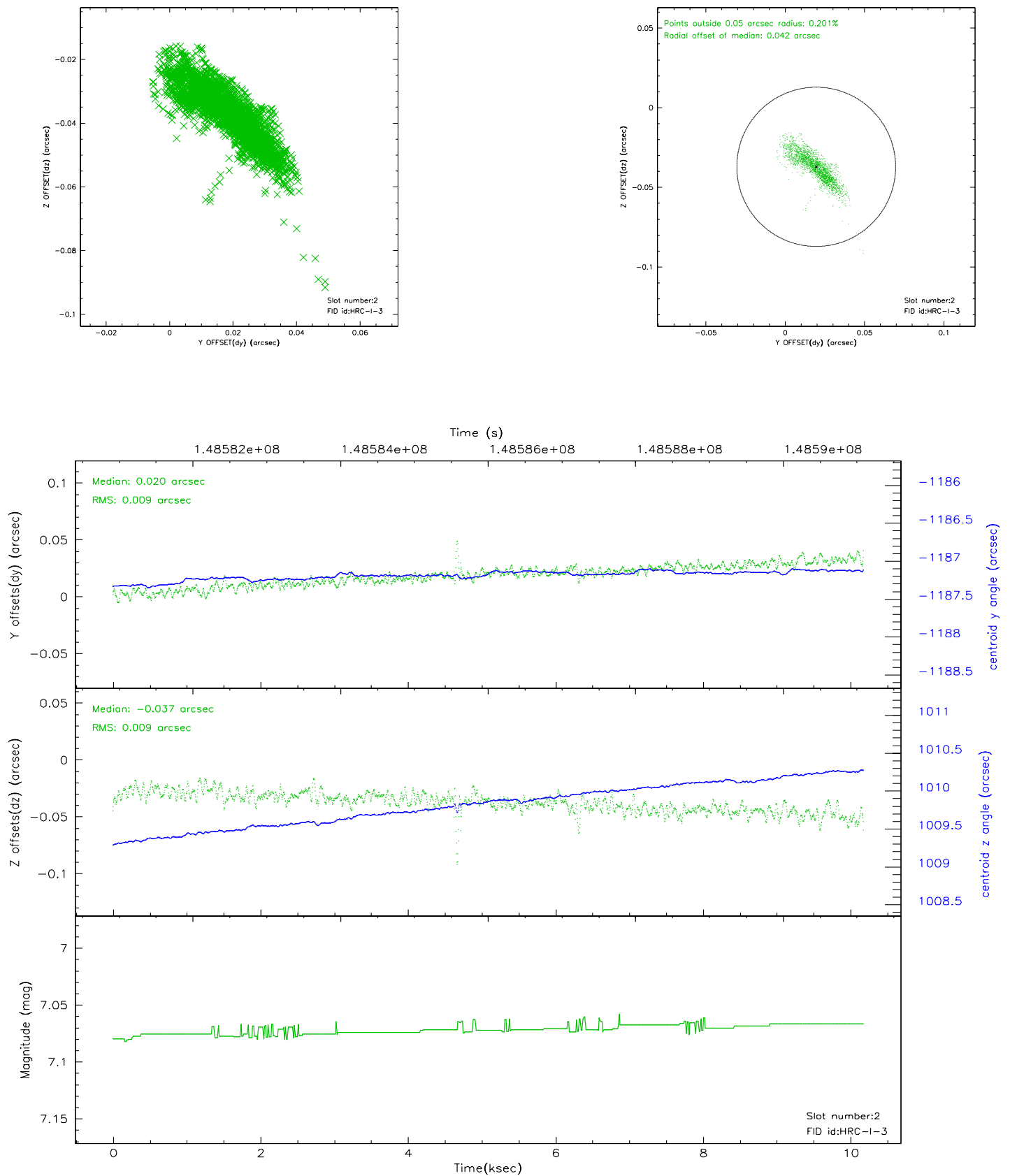
2.5.1 Slot 0



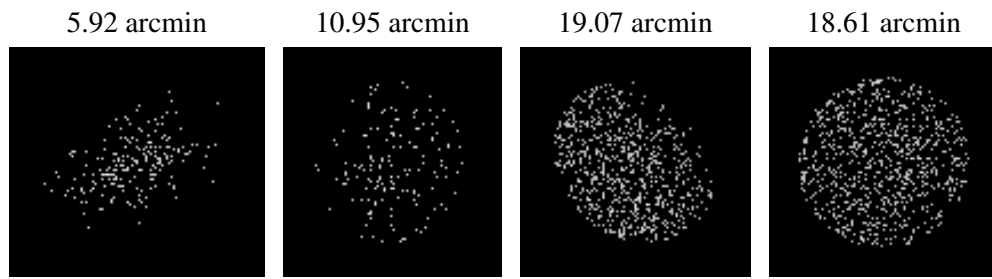
2.5.2 Slot 1



2.5.3 Slot 2



3 Point Sources



A Summary

A.1 Status

V&V Scientist	Jen Lauer
V&V Date (YYYY-MM-DD)	2007.12.04
V&V Edition	1
V&V Disposition and Status	OK
V&V Charge Time	9.983

A.2 Comments

Monitor constraint met.

The current observation has been reprocessed as part of Repro III ('C' supplement) the purpose of which is to update all HRC-I ObsIDs since Jan 2000 to the latest calibrations available for that configuration. Specifically, we are updating the DEGAP solution and the Gain Maps applied. For more information see the Repro IIIC web page at

<http://asc.harvard.edu/cda/repro3.html#IIIC>

and the associated links.