

V&V Reference Report

L2 ASCDS Version : 7.6.9

Observation 2709 - L2 Version 001
Chandra X-Ray Center

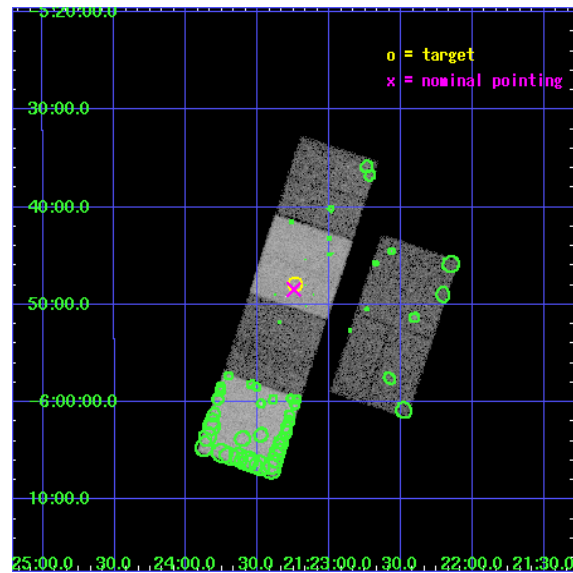
L2 Processing Date : Oct 9 2006

Contents

1	Front	2
2	OBI	3
2.1	OBI	3
2.1.1	Images	3
2.1.2	Bias	3
2.1.3	Parameters	4
2.1.4	Events	4
2.2	Compared Parameters	5
2.3	Aspect	6
2.4	Star Slots	9
2.4.1	Slot 3	9
2.4.2	Slot 4	10
2.4.3	Slot 5	11
2.4.4	Slot 6	12
2.4.5	Slot 7	13
2.5	FID Slots	14
2.5.1	Slot 0	14
2.5.2	Slot 1	15
2.5.3	Slot 2	16
3	Point Sources	17
A	Summary	18
A.1	Status	18
A.2	Comments	18

1 Front

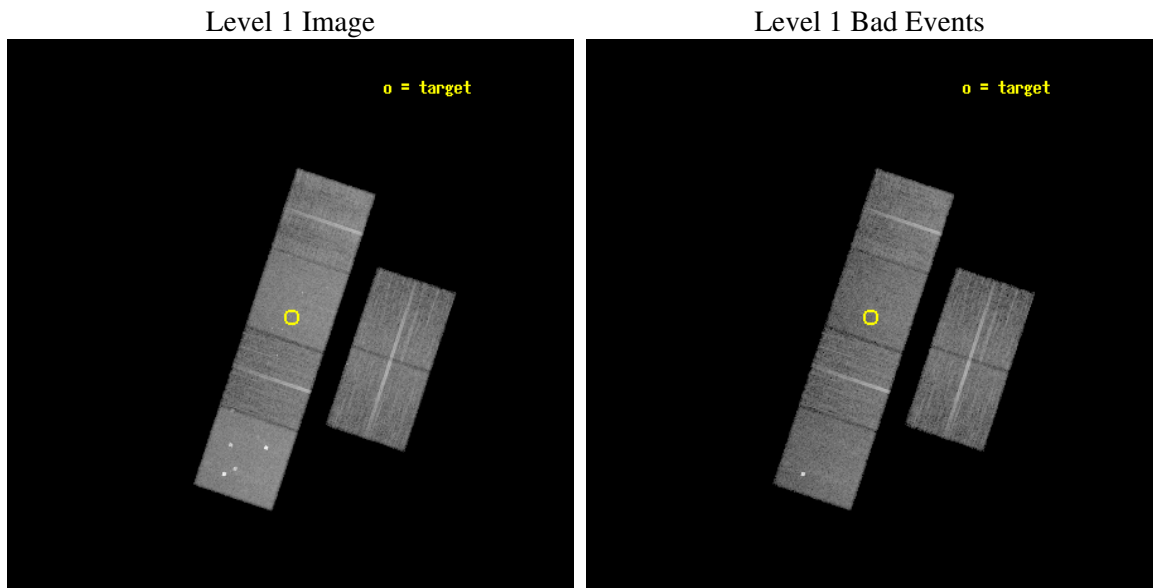
seq_num	400189
obs_id	2709
title	THE HIGH LATITUDE NEUTRON STAR X-RAY TRANSIENT XTE J2123-058
observer	Dr. John Tomsick
object	XTE J2123-058
dtcycle	0
cycle	P
ra_targ	320.810417
dec_targ	-5.798028
ra_nom	320.81182806777
dec_nom	-5.807602877263
roll_nom	288.34156720153
revision	2
ontime	17932.799933195
livetime	17705.724022605
ontime2	17932.799933195
ontime3	17932.799933195
ontime5	17932.799933195
ontime6	17932.799933195
ontime7	17932.799933195
ontime8	17932.799933195
l2events	165197



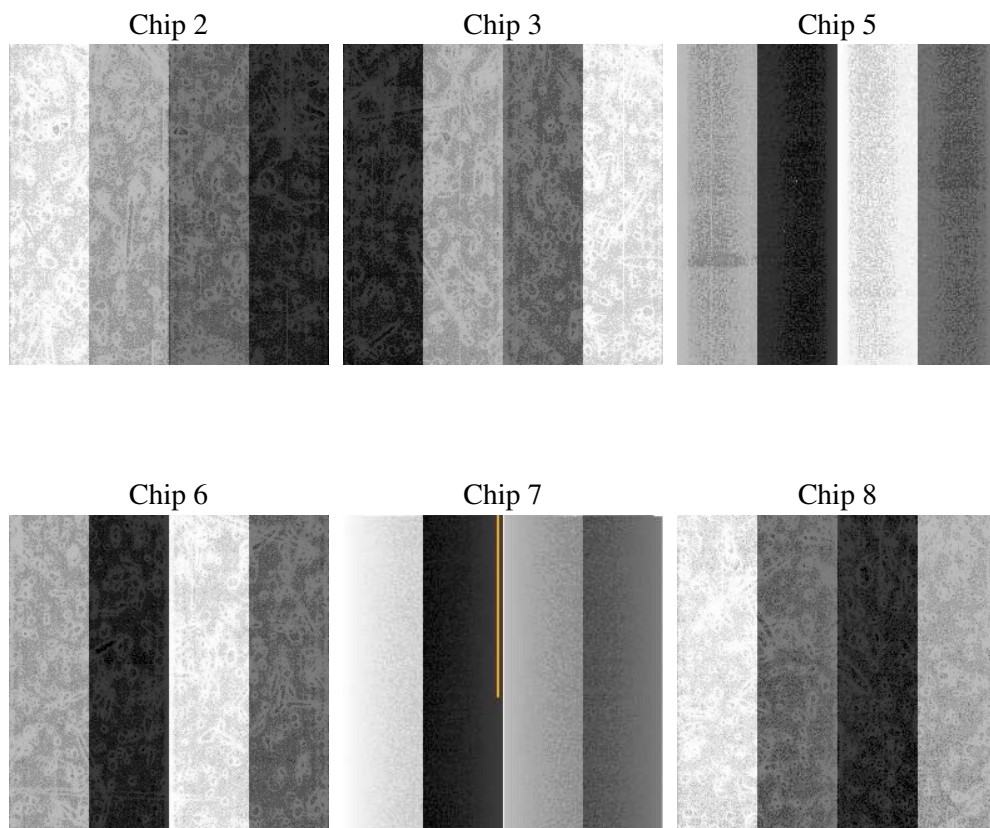
2 OBI

2.1 OBI

2.1.1 Images



2.1.2 Bias



2.1.3 Parameters

obi_num	1
ascdsver	7.6.9
caldsver	3.2.3
date	2006-10-09T12:16:43
revision	2

sched_exp_time	18000.000000
ontime	17935.696696341
ontime2	17935.696696341
ontime3	17935.696666449
ontime5	17935.696696341
ontime6	17935.696696341
ontime7	17935.696696341
ontime8	17935.696666449
l1events	776799

2.1.4 Events

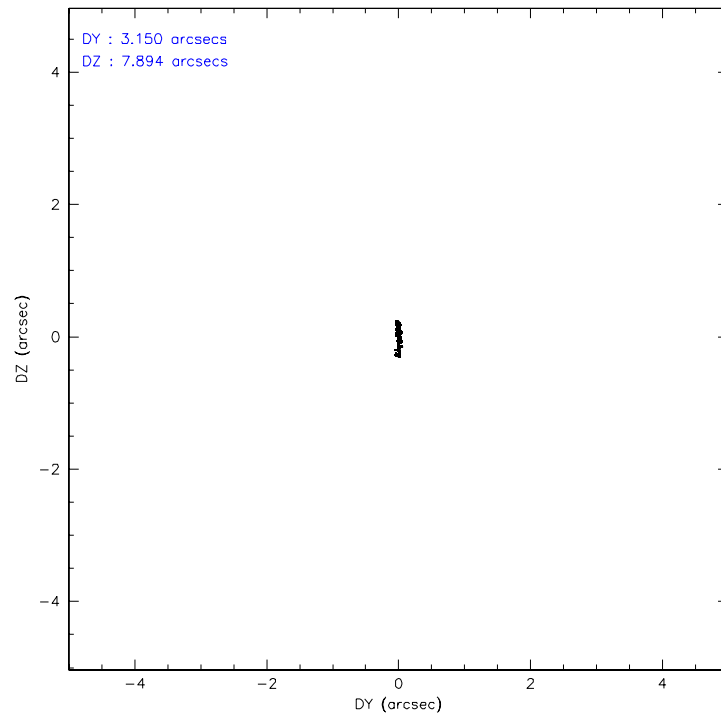
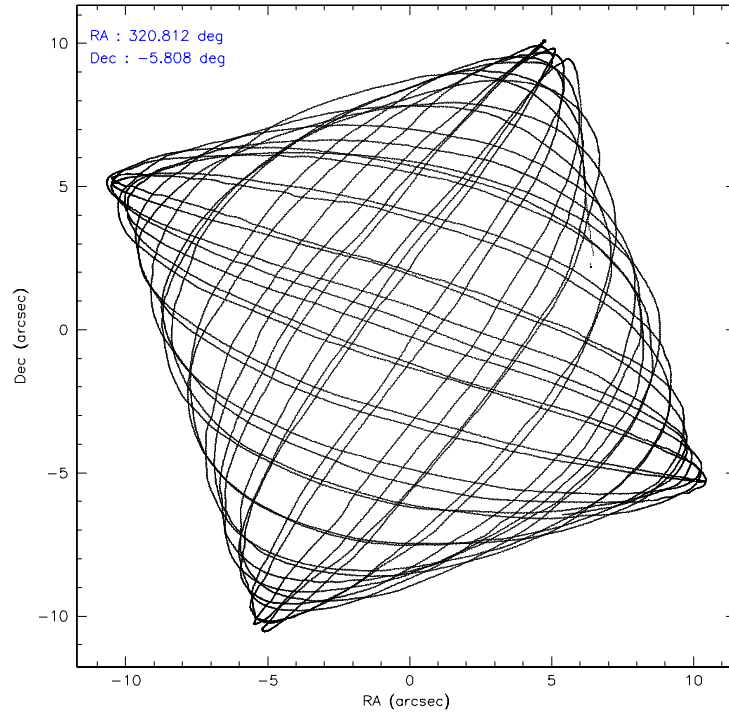
	ccd 2	ccd 3	ccd 5	ccd 6	ccd 7	ccd 8
level 1 events	109657	106704	168548	108875	145031	137984
rejected events	96836	94313	91173	95881	89972	109155
rejected %	88%	88%	54%	88%	62%	79%

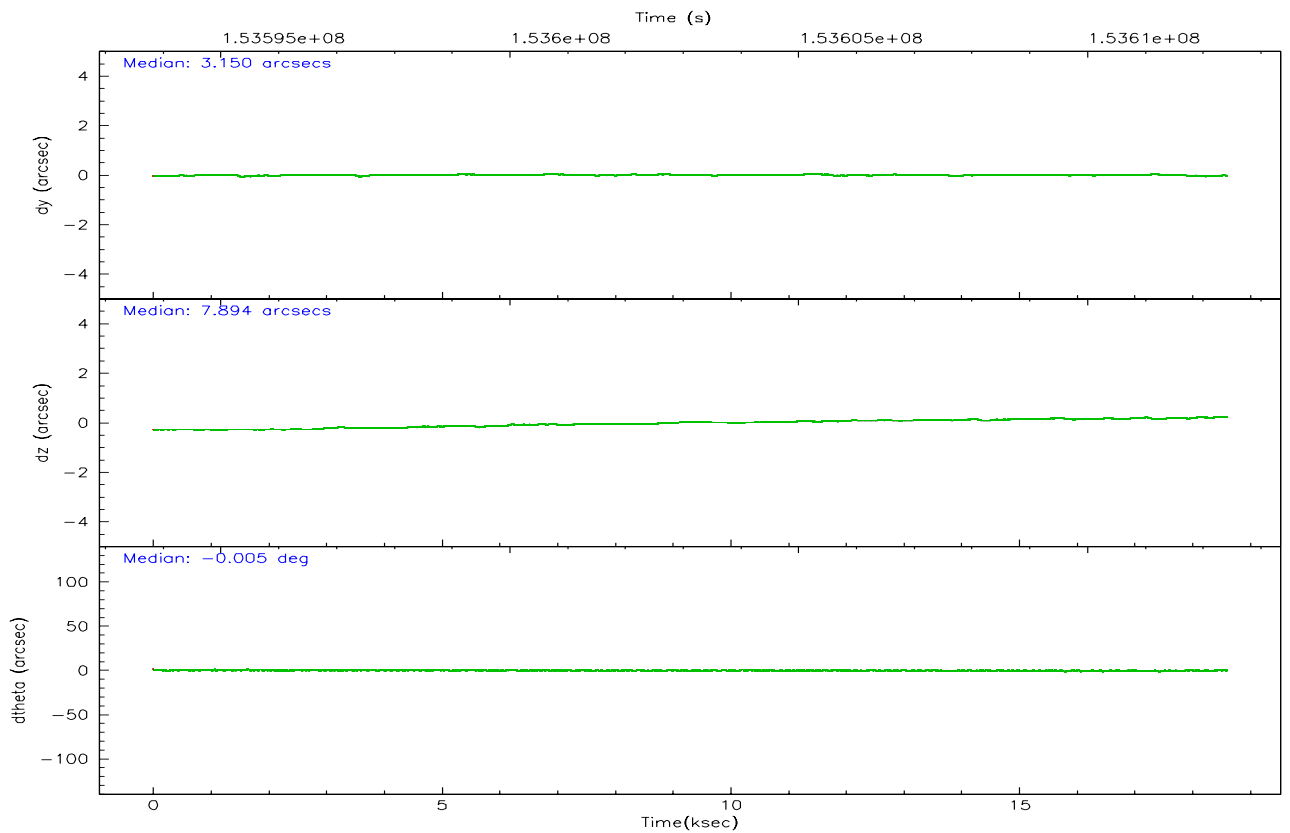
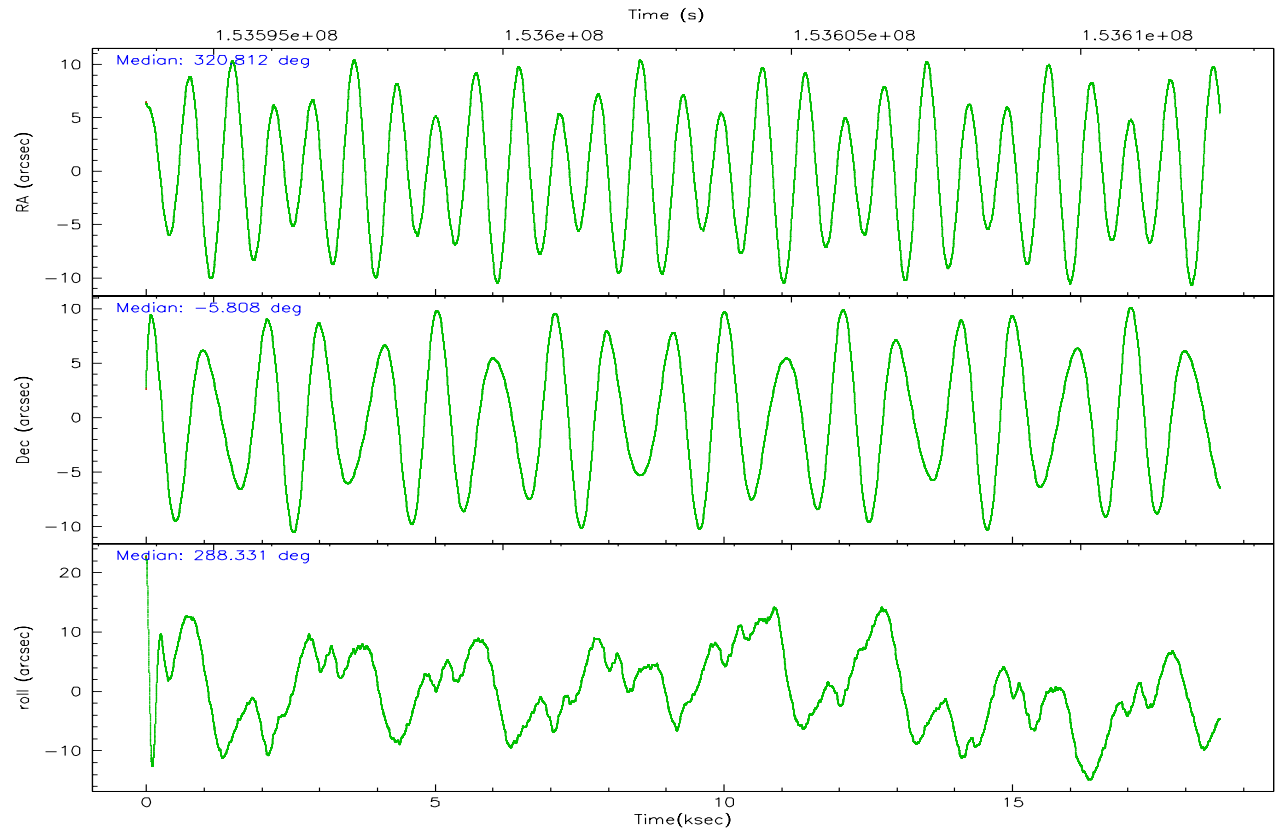
	ccd 2	ccd 3	ccd 5	ccd 6	ccd 7	ccd 8
grade 0 events	5677	5446	11207	5243	3320	9303
	5%	5%	6%	4%	2%	6%
grade 1 events	60	62	143	53	85	85
	0%	0%	0%	0%	0%	0%
grade 2 events	2590	2328	23228	2548	13648	6164
	2%	2%	13%	2%	9%	4%
grade 3 events	1216	1225	1543	1321	2720	3135
	1%	1%	0%	1%	1%	2%
grade 4 events	1224	1267	1628	1305	2747	2906
	1%	1%	0%	1%	1%	2%
grade 5 events	4168	4602	7625	4809	9528	6187
	3%	4%	4%	4%	6%	4%
grade 6 events	2116	2129	39786	2583	32634	7328
	1%	1%	23%	2%	22%	5%
grade 7 events	92606	89645	83388	91013	80349	102876
	84%	84%	49%	83%	55%	74%

2.2 Compared Parameters

Parameter	Planned	Actual	Parameter	Planned	Actual
Instrument	ACIS	ACIS	Obspar format version number	6	6
Detector	ACIS-235678	ACIS-235678	Obspar file type	PREDICTED	ACTUAL
Grating	NONE	NONE	Obspar update status	NONE	UPDATED
Data mode	FAINT	FAINT	Number of optional ACIS chips dropped	0	0
Observation mode	POINTING	POINTING	On-chip summing requested	N	N
Pointing RA	320.791113	320.8118280677672	Subarray requested	NONE	NONE
Pointing Dec	-5.789773	-5.807602877263002	Alternating exposures requested	N	N
Pointing Roll	288.182817	288.3415672015287	Primary exposure time	0.000000	3.2
SIM focus pos (mm)	-0.684267	-0.6828225247311905			
SIM defocus (mm)	0	0.001444936568705701			
SIM translation stage pos (mm)	-190.132523	-190.1425803651734			
SIM translation stage offset (mm)	0	0.01005778216563158			
Observation start time	153594419.184000	153593251.35576			
Observation start date	2002-11-13T17:05:55	2002-11-13T16:47:31			
Observation end time	153612419.184000	153612975.94408			
Observation end date	2002-11-13T22:05:55	2002-11-13T22:16:15			
Read mode	TIMED	TIMED			

2.3 Aspect



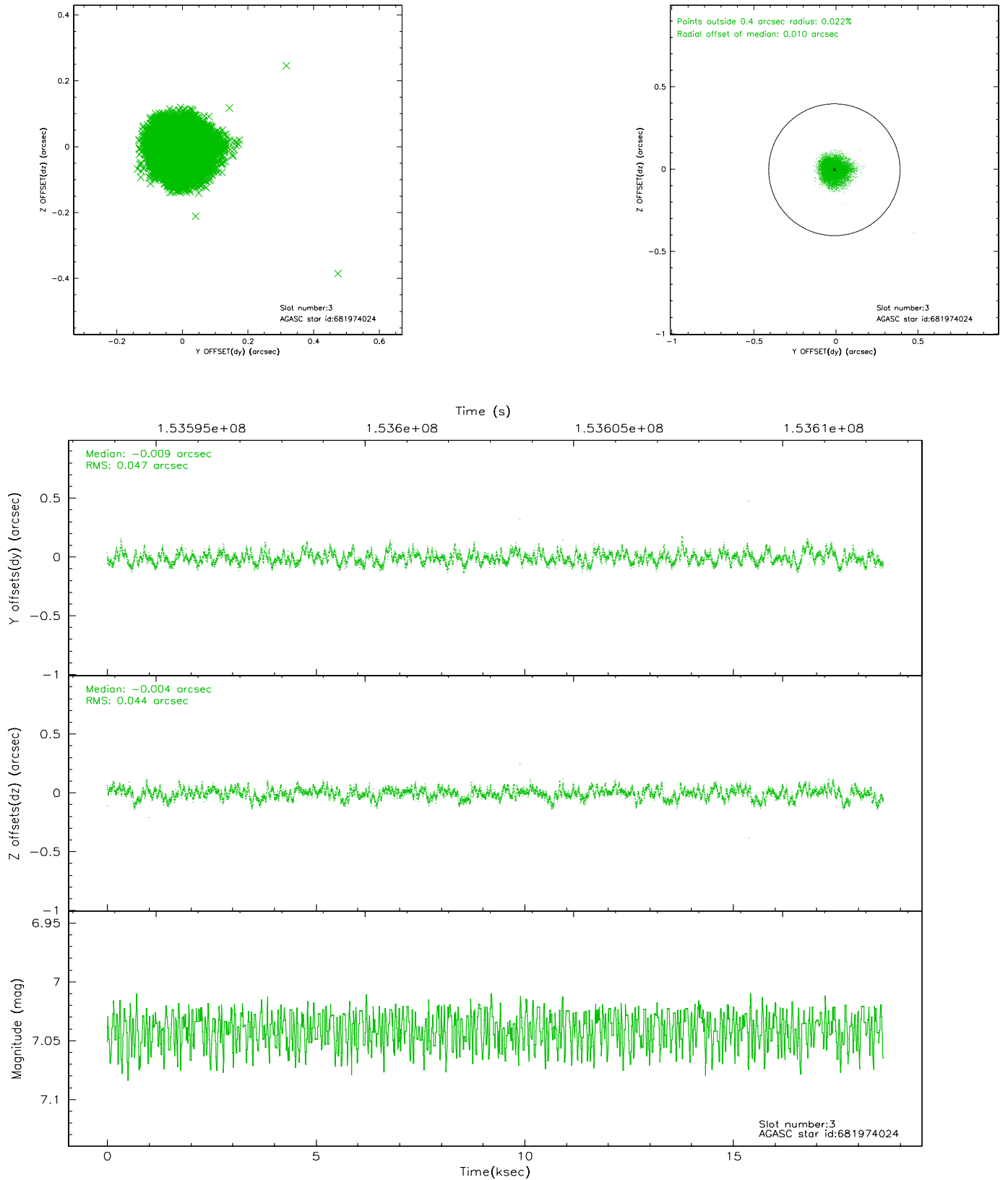


Slot Statistics

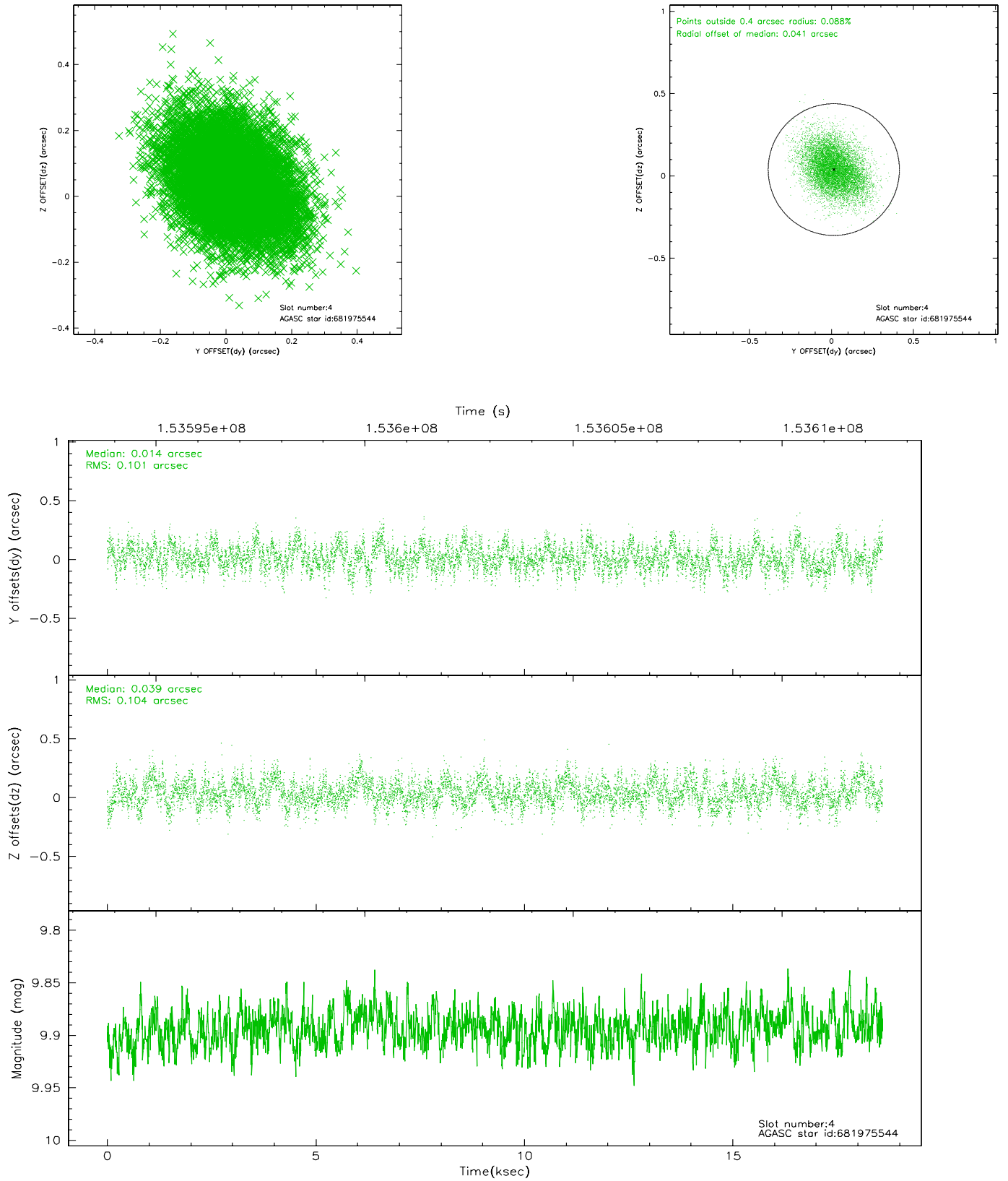
slot	status	id	mag	n_pts	med_dy	med_dz	dr1	dr2	ra	dec	mean_y	mean_z
0	FID	ACIS-S-1	7.19	4538	0.027	-0.001	0.009	0.016	0.000000	0.000000	940.24	-1724.65
1	FID	ACIS-S-5	7.24	4536	-0.010	0.041	0.006	0.010	0.000000	0.000000	-1808.64	172.77
2	FID	ACIS-S-6	7.36	4535	-0.039	-0.028	0.010	0.016	0.000000	0.000000	405.54	816.87
3	GUIDE	681974024	7.04	9071	-0.009	-0.004	0.070	0.107	321.178430	-5.581308	-280.00	1552.02
4	GUIDE	681975544	9.89	9068	0.014	0.039	0.154	0.252	321.128432	-5.005667	-2304.79	2029.51
5	GUIDE	682496328	8.45	9069	0.027	0.071	0.072	0.116	321.279739	-5.699757	238.16	1763.73
6	GUIDE	681847232	10.01	8997	-0.025	0.012	0.155	0.251	320.011090	-5.587544	-1561.98	-2429.14
7	GUIDE	681845088	8.89	9071	-0.010	-0.121	0.089	0.138	320.406640	-5.318699	-2041.14	-781.47

2.4 Star Slots

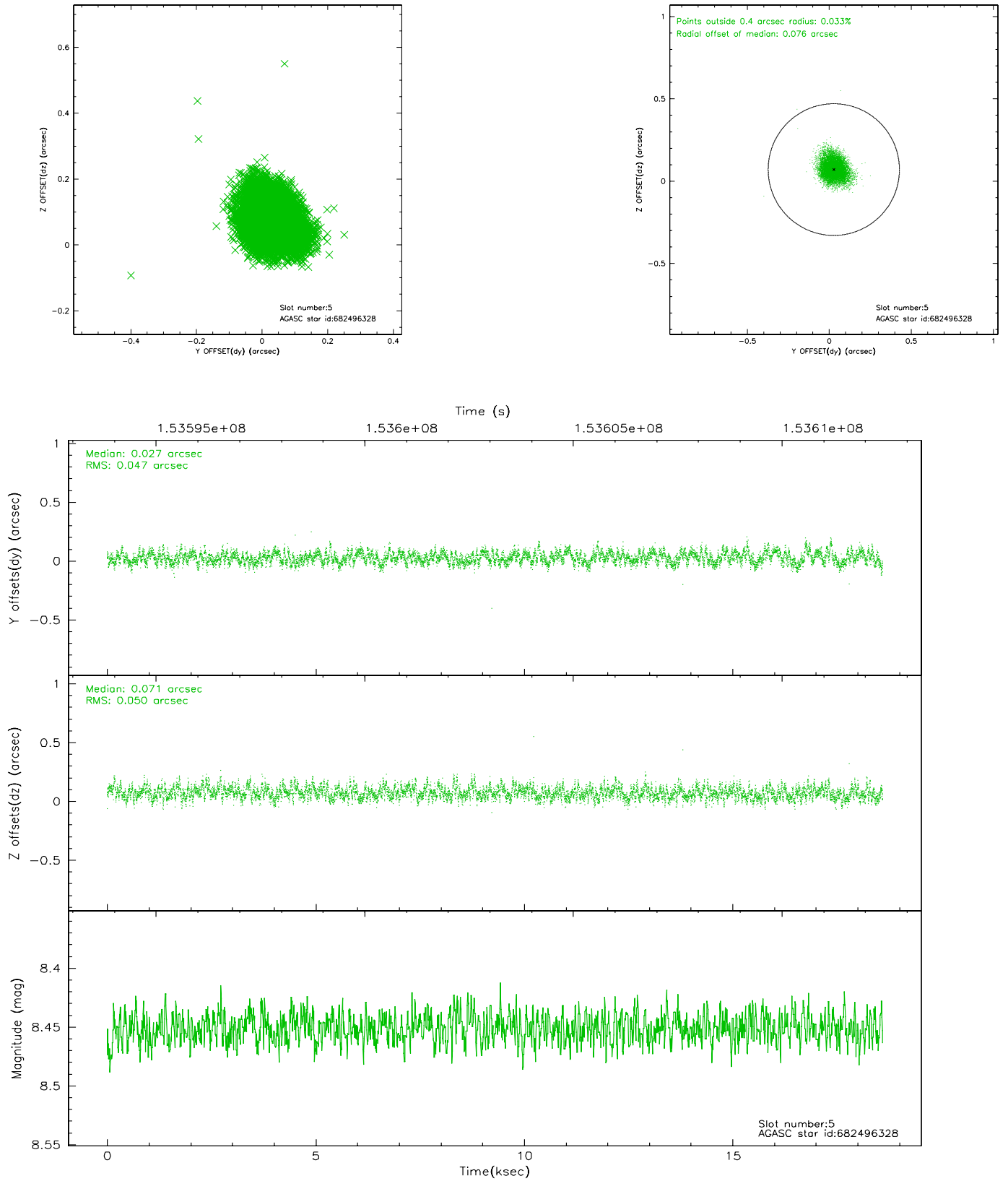
2.4.1 Slot 3



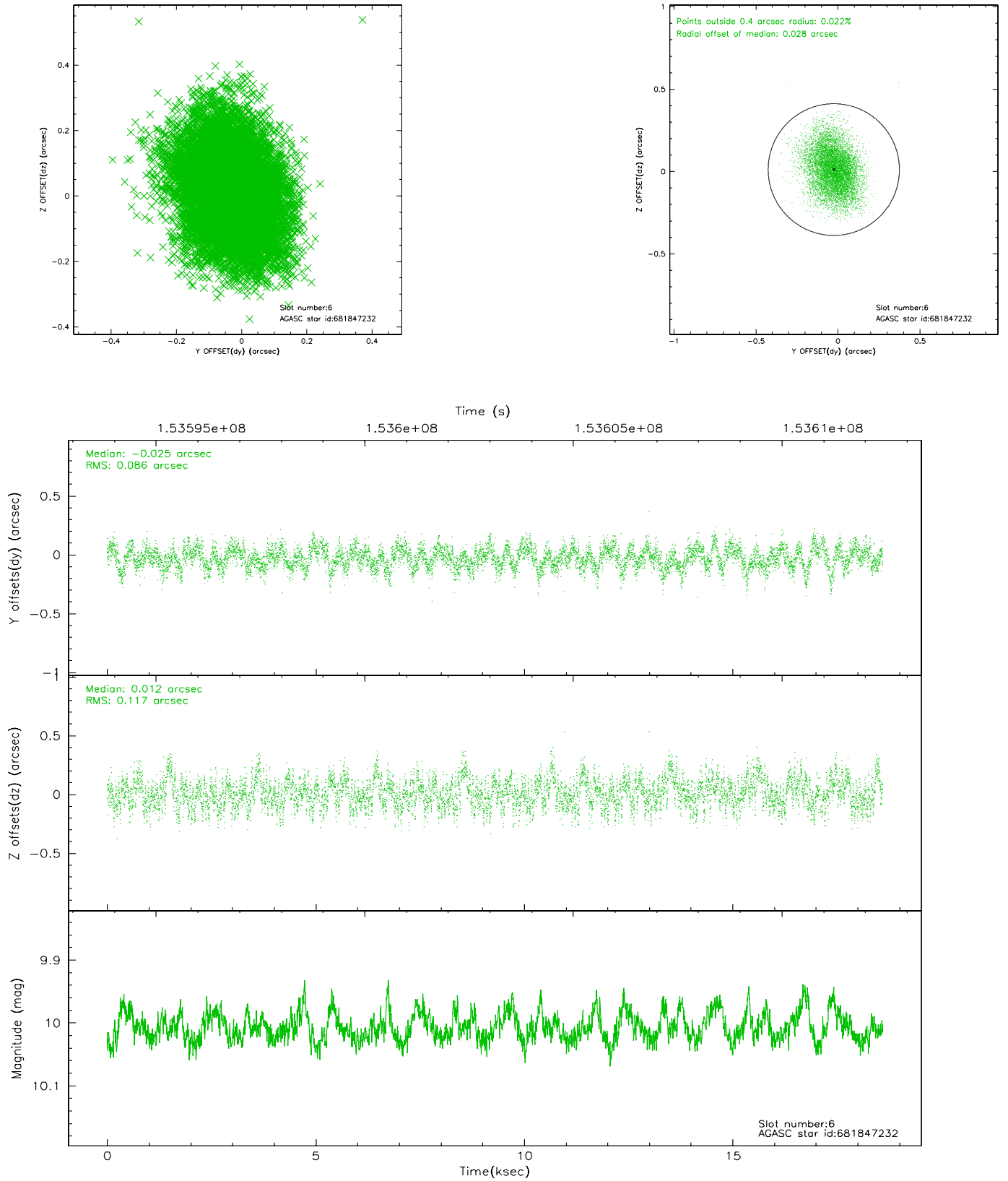
2.4.2 Slot 4



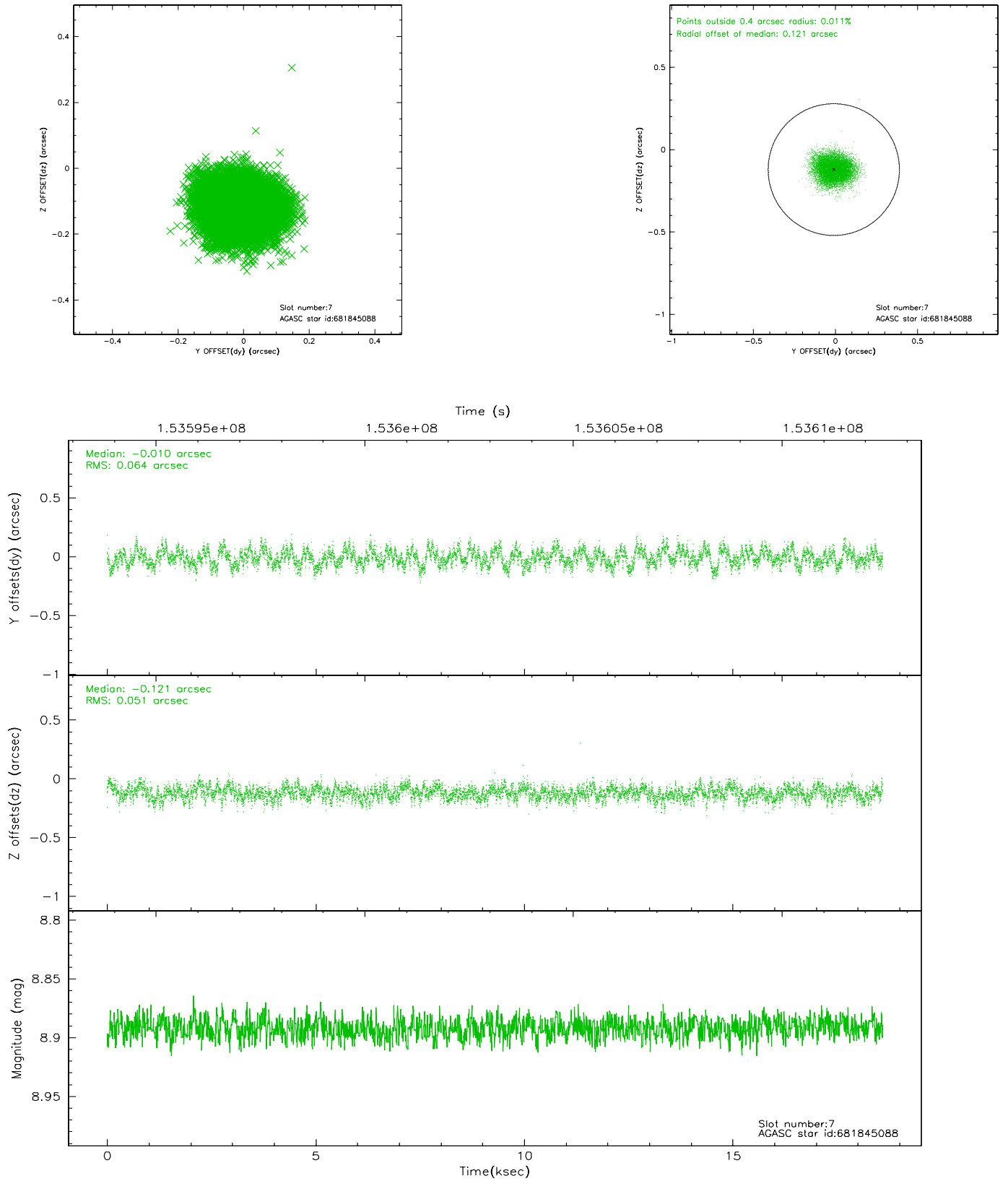
2.4.3 Slot 5



2.4.4 Slot 6

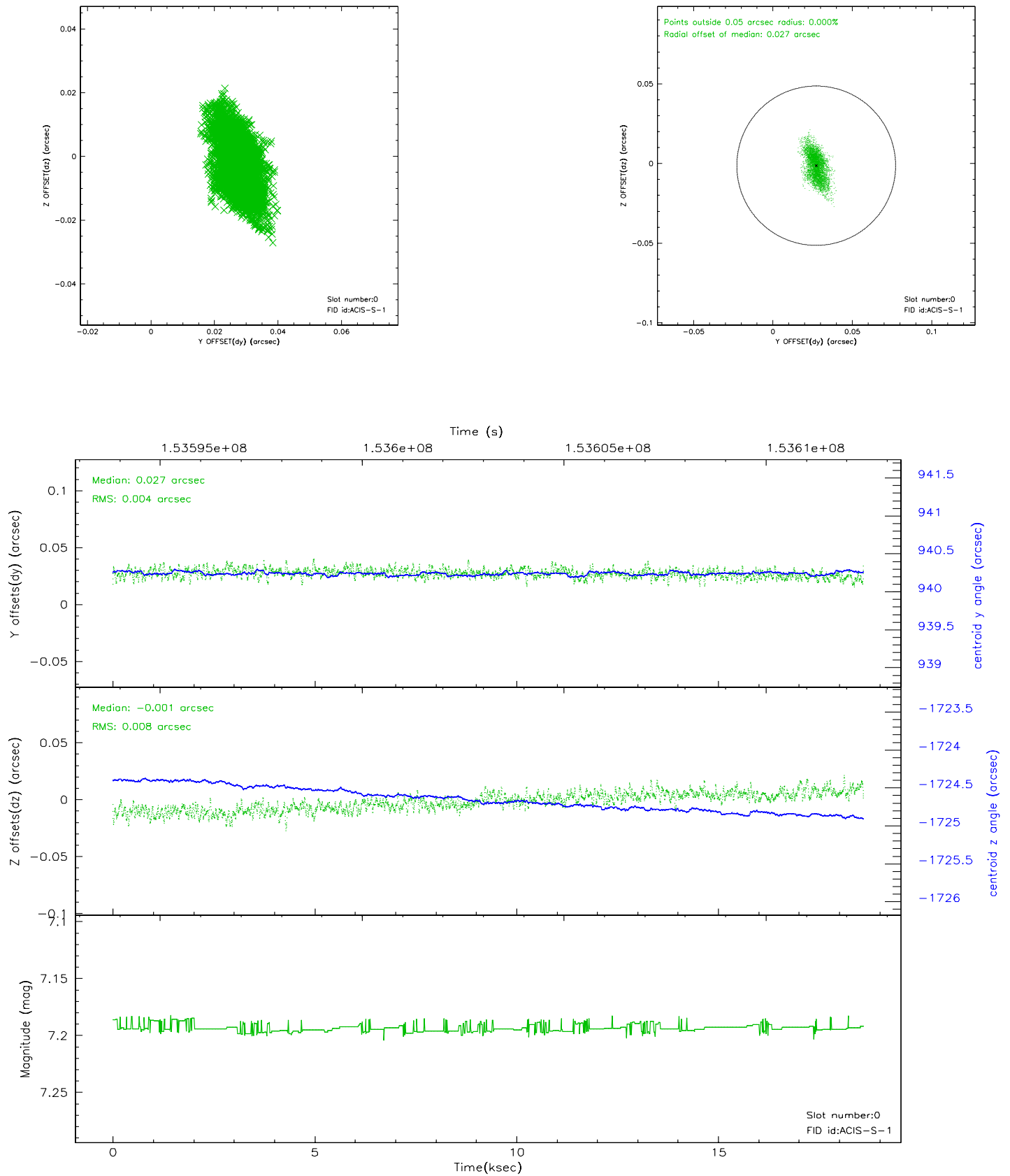


2.4.5 Slot 7

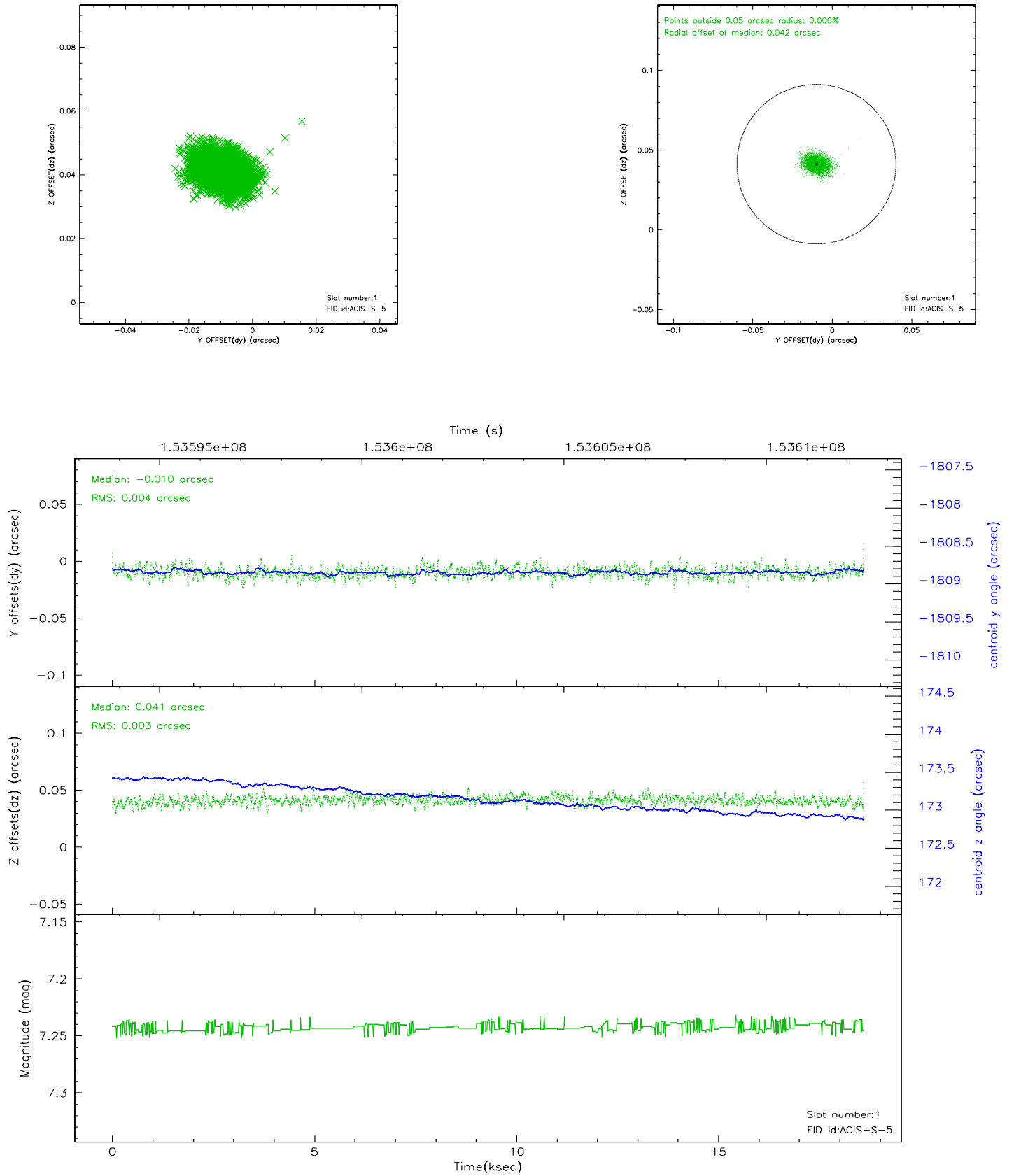


2.5 FID Slots

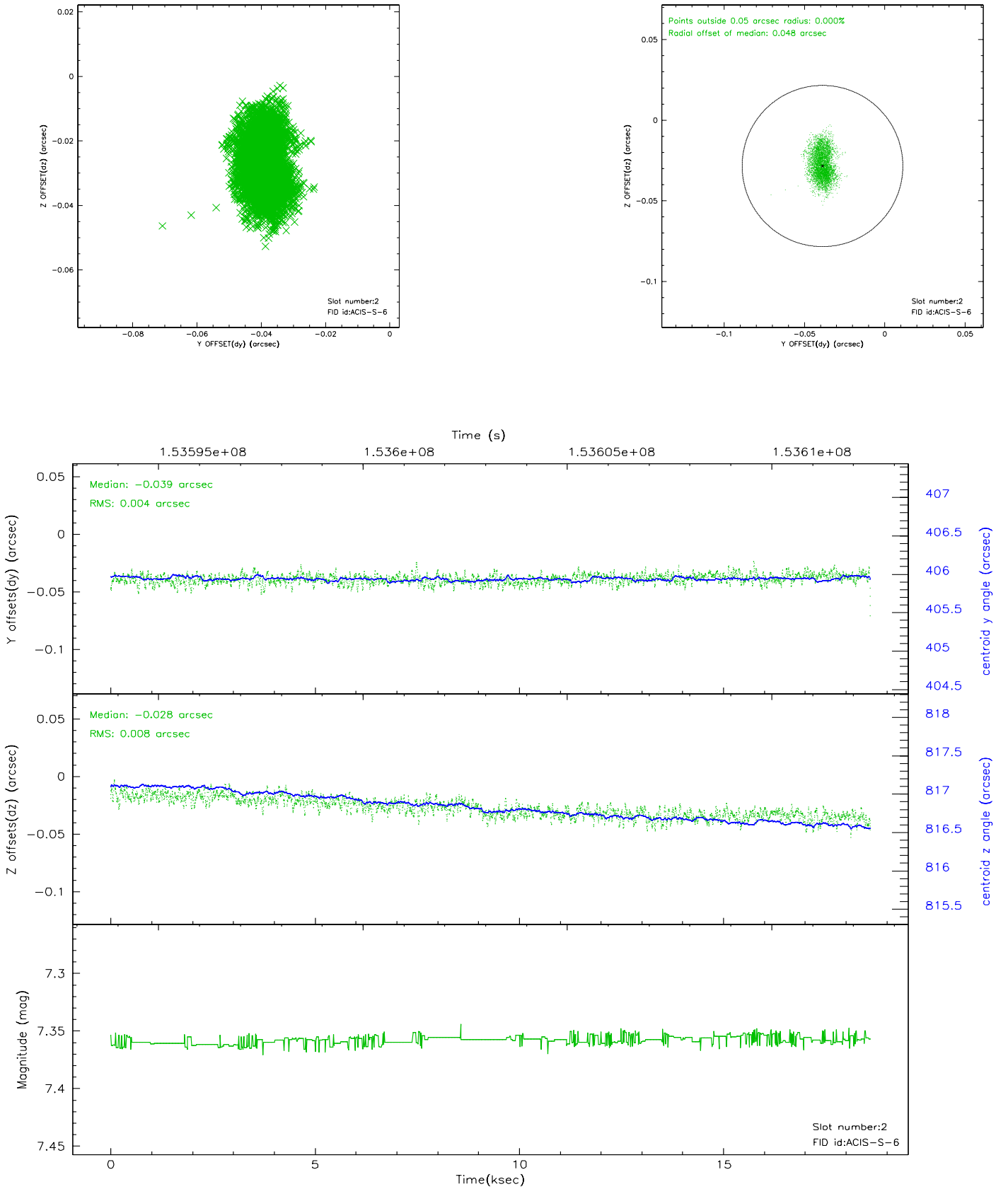
2.5.1 Slot 0



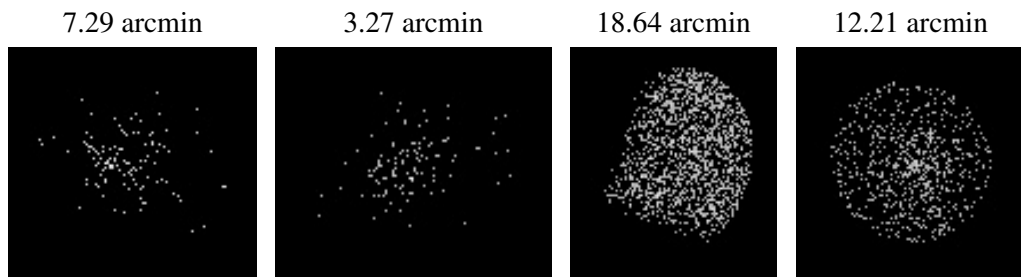
2.5.2 Slot 1



2.5.3 Slot 2



3 Point Sources



A Summary

A.1 Status

V&V Scientist	Jen Lauer
V&V Date (YYYY-MM-DD)	2006.10.10
V&V Edition	1
V&V Disposition and Status	OK
V&V Charge Time	17.932

A.2 Comments