

V&V Reference Report

L2 ASCDS Version : 7.6.8.1

Observation 2695 - L2 Version 001
Chandra X-Ray Center

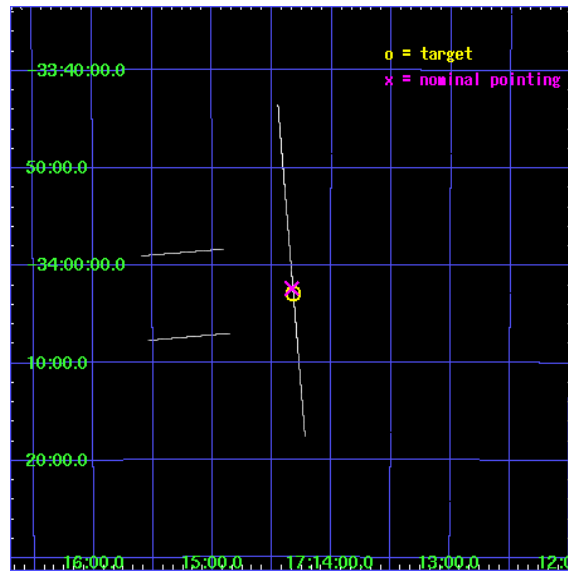
L2 Processing Date : Sep 6 2006

Contents

1	Front	2
2	OBI	3
2.1	OBI	3
2.1.1	Images	3
2.1.2	Bias	3
2.1.3	Parameters	4
2.1.4	Events	4
2.2	Compared Parameters	5
2.3	Aspect	6
2.4	Star Slots	9
2.4.1	Slot 3	9
2.4.2	Slot 4	10
2.4.3	Slot 5	11
2.4.4	Slot 6	12
2.4.5	Slot 7	13
2.5	FID Slots	14
2.5.1	Slot 0	14
2.5.2	Slot 1	15
2.5.3	Slot 2	16
A	Summary	17
A.1	Status	17
A.2	Comments	17

1 Front

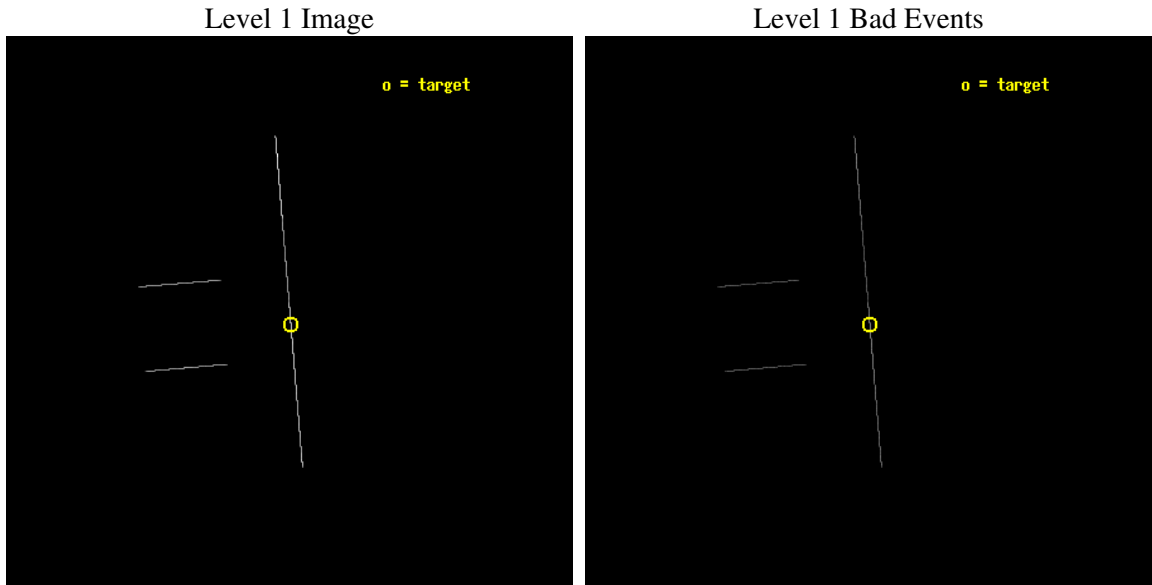
seq_num	400175
obs_id	2695
title	THE FAINTEST 'FIELD' LOW-MASS X-RAY BINARIES
observer	PROF MICHIEL VAN DER KLIS
object	1711-339
ra_targ	258.58
dec_targ	-34.049333
ra_nom	258.58306224994
dec_nom	-34.03992920502
roll_nom	85.22679075043
revision	2
ontime	4652.0
livetime	4633.828125
ontime2	4652.0
ontime3	4652.0
ontime5	4652.0
ontime6	4652.0
ontime7	4652.0
ontime8	4628.641929239
l2events	53763



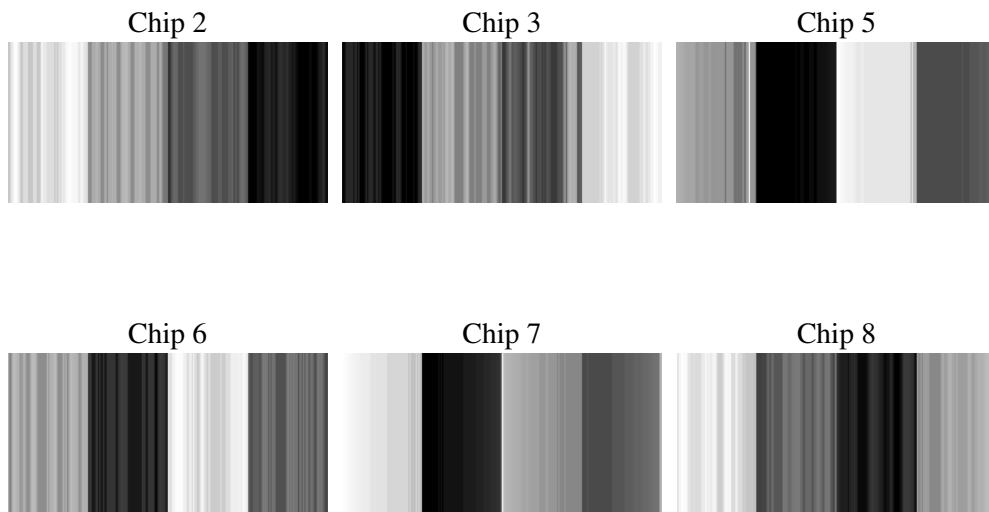
2 OBI

2.1 OBI

2.1.1 Images



2.1.2 Bias



2.1.3 Parameters

obi_num	0
ascdsver	7.6.8.1
caldsver	3.2.3
date	2006-09-06T16:53:07
revision	2

sched_exp_time	4984.000000
ontime	4654.7841388434
ontime2	4654.7579782754
ontime3	4654.8219229728
ontime5	4654.7839817107
ontime6	4654.7840649486
ontime7	4654.7841388434
ontime8	4631.4261998683
l1events	77707

2.1.4 Events

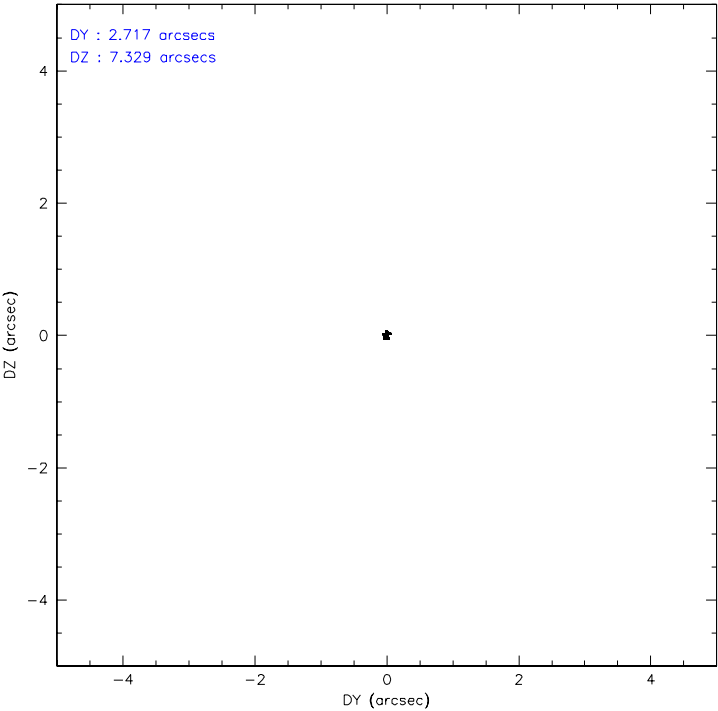
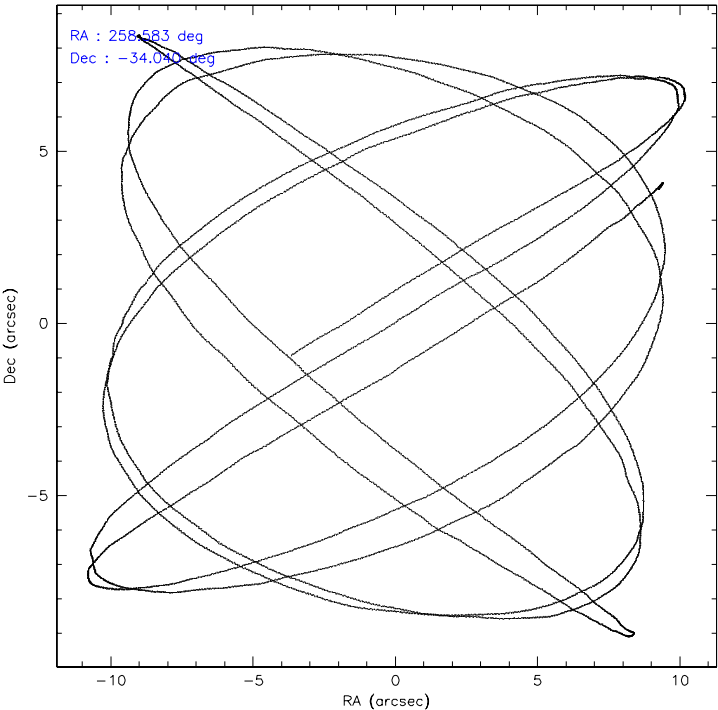
	ccd 2	ccd 3	ccd 5	ccd 6	ccd 7	ccd 8
level 1 events	5865	6479	26656	6300	19736	12671
rejected events	971	1112	2404	1190	2949	1768
rejected %	16%	17%	9%	18%	14%	13%

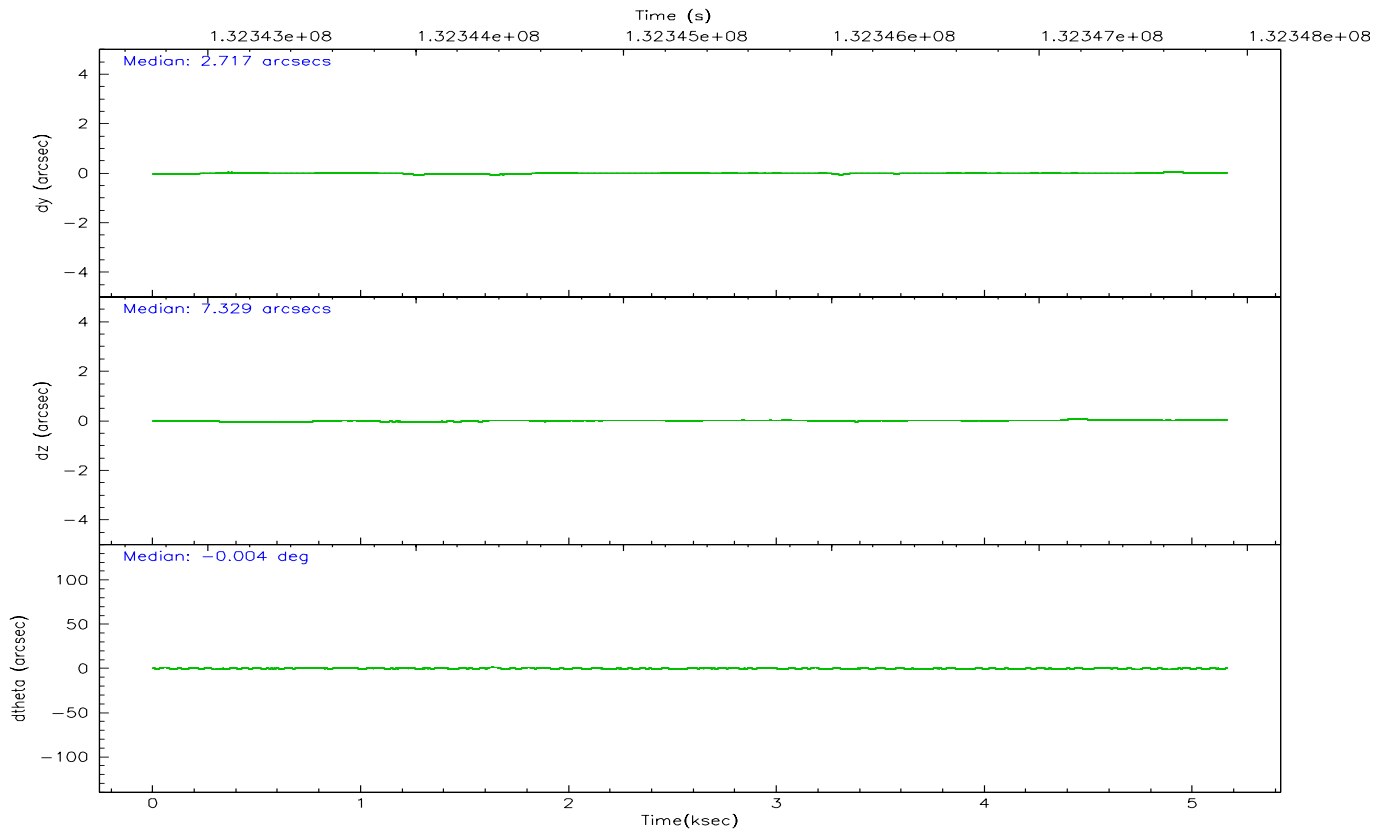
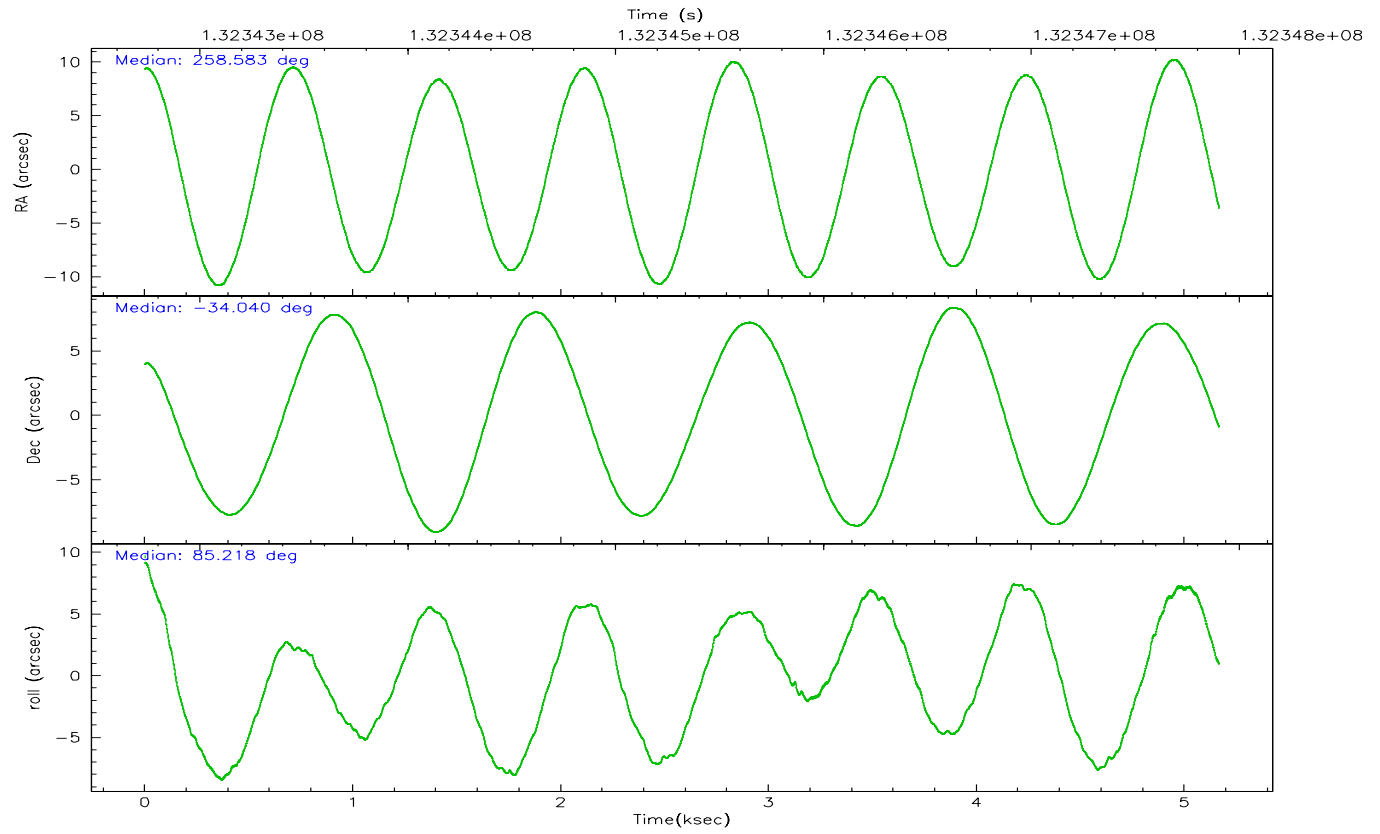
	ccd 2	ccd 3	ccd 5	ccd 6	ccd 7	ccd 8
grade 0 events	687	668	3923	540	1073	2088
	11%	10%	14%	8%	5%	16%
grade 1 events	22	19	30	23	28	37
	0%	0%	0%	0%	0%	0%
grade 2 events	1846	2049	6599	2054	4311	3363
	31%	31%	24%	32%	21%	26%
grade 3 events	703	806	506	673	762	1281
	11%	12%	1%	10%	3%	10%
grade 4 events	697	699	476	652	721	1328
	11%	10%	1%	10%	3%	10%
grade 5 events	947	1092	2362	1164	2899	1730
	16%	16%	8%	18%	14%	13%
grade 6 events	963	1146	12760	1194	9942	2844
	16%	17%	47%	18%	50%	22%
grade 7 events	0	0	0	0	0	0
	0%	0%	0%	0%	0%	0%

2.2 Compared Parameters

Parameter	Planned	Actual	Parameter	Planned	Actual
Instrument	ACIS	ACIS	Obspar format version number	6	6
Detector	ACIS-235678	ACIS-235678	Obspar file type	PREDICTED	ACTUAL
Grating	NONE	NONE	Obspar update status	NONE	UPDATED
Data mode	CC33_FAINT	CC33_FAINT	On-chip summing requested	N	N
Observation mode	POINTING	POINTING	Subarray requested	NONE	NONE
Pointing RA	258.597408	258.5830622499381	Alternating exposures requested	N	N
Pointing Dec	-34.064459	-34.03992920502007	Primary exposure time	0.000000	0
Pointing Roll	85.078202	85.22679075043023			
SIM focus pos (mm)	-0.684267	-0.6828225247311905			
SIM defocus (mm)	0	0.001444936568705701			
SIM translation stage pos (mm)	-190.132523	-190.1400660498719			
SIM translation stage offset (mm)	0	0.00754346686406393			
Observation start time	132342920.184000	132342388.27082			
Observation start date	2002-03-12T17:54:16	2002-03-12T17:46:28			
Observation end time	132347904.184000	132348438.84606			
Observation end date	2002-03-12T19:17:20	2002-03-12T19:27:18			
Read mode	CONTINUOUS	CONTINUOUS			

2.3 Aspect



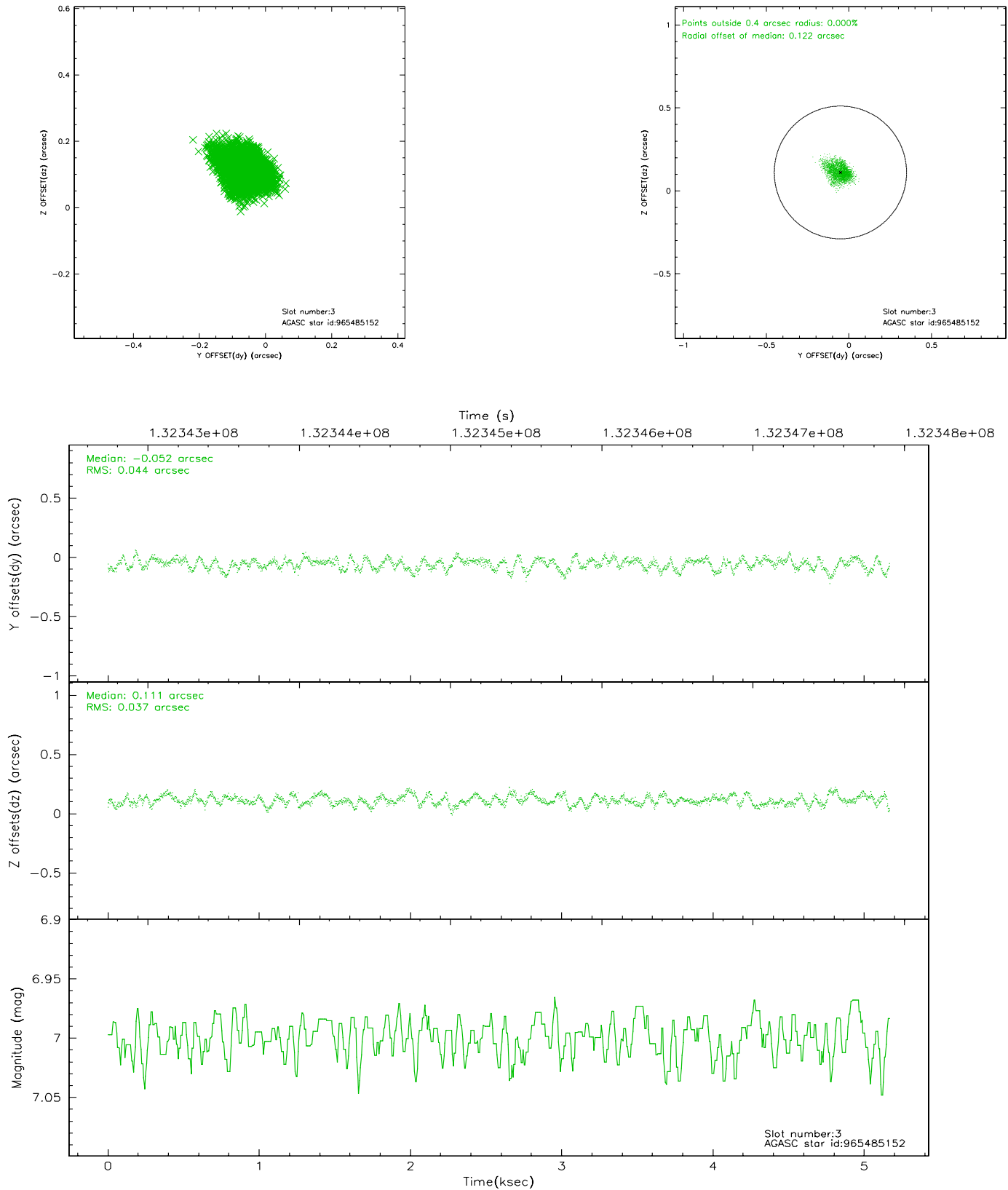


Slot Statistics

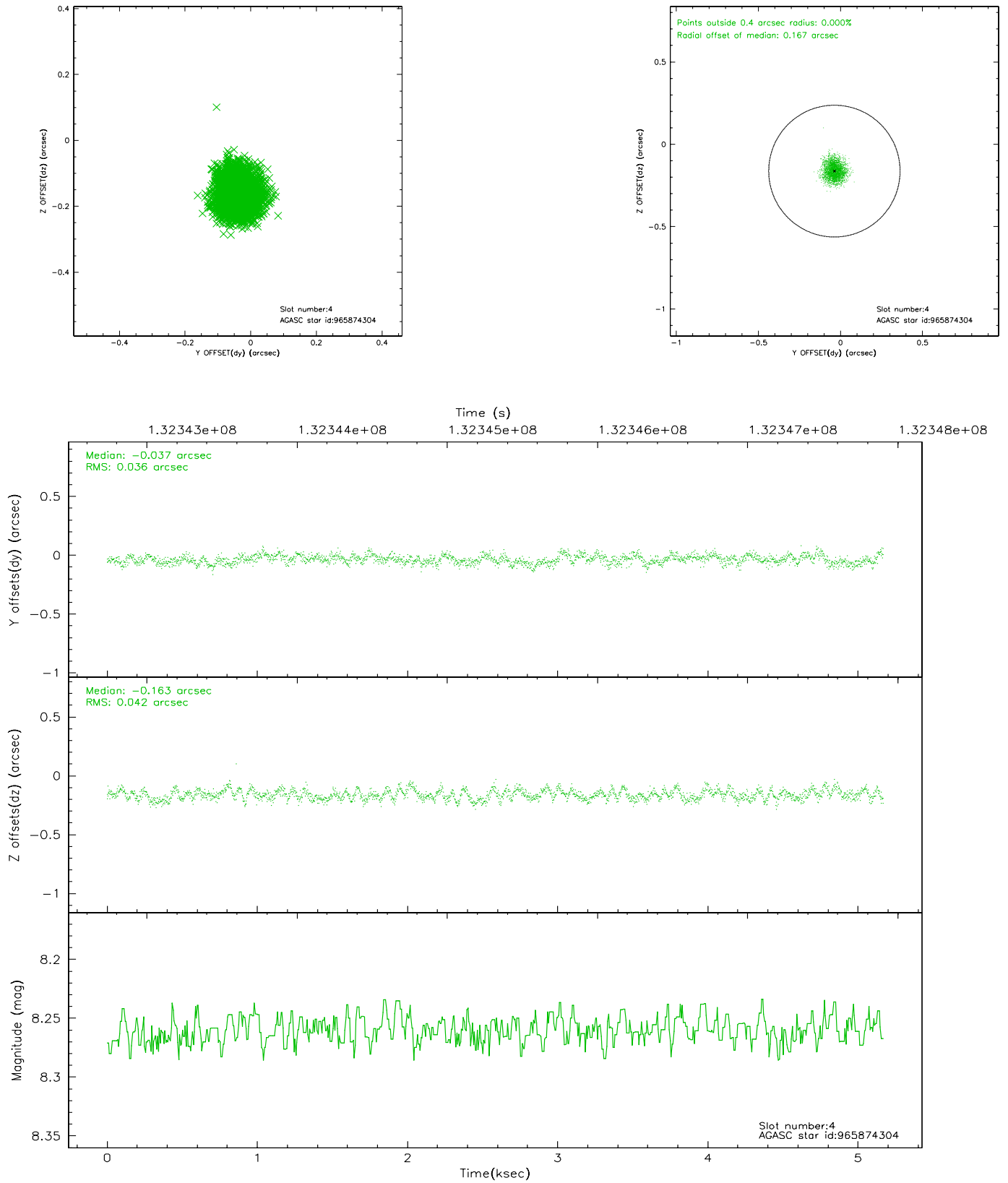
slot	status	id	mag	n_pts	med_dy	med_dz	dr1	dr2	ra	dec	mean_y	mean_z
0	FID	ACIS-S-2	7.11	1261	0.003	0.030	0.007	0.011	0.000000	0.000000	-755.35	-1728.47
1	FID	ACIS-S-4	7.20	1261	-0.087	-0.010	0.005	0.009	0.000000	0.000000	2157.31	178.76
2	FID	ACIS-S-5	7.24	1261	0.052	-0.011	0.006	0.011	0.000000	0.000000	-1806.63	173.77
3	GUIDE	965485152	7.00	2521	-0.052	0.111	0.061	0.099	258.961466	-33.737003	1267.37	-984.89
4	GUIDE	965874304	8.26	2520	-0.037	-0.163	0.059	0.093	258.165412	-33.928695	374.99	1326.56
5	GUIDE	966002536	8.20	2521	-0.044	0.067	0.055	0.093	258.909506	-33.833923	906.90	-858.31
6	GUIDE	965881248	8.27	2521	-0.045	-0.196	0.053	0.084	258.339912	-33.969934	273.49	794.29
7	GUIDE	966005376	9.57	2520	0.182	0.180	0.091	0.149	258.892252	-34.492869	-1461.17	-1004.06

2.4 Star Slots

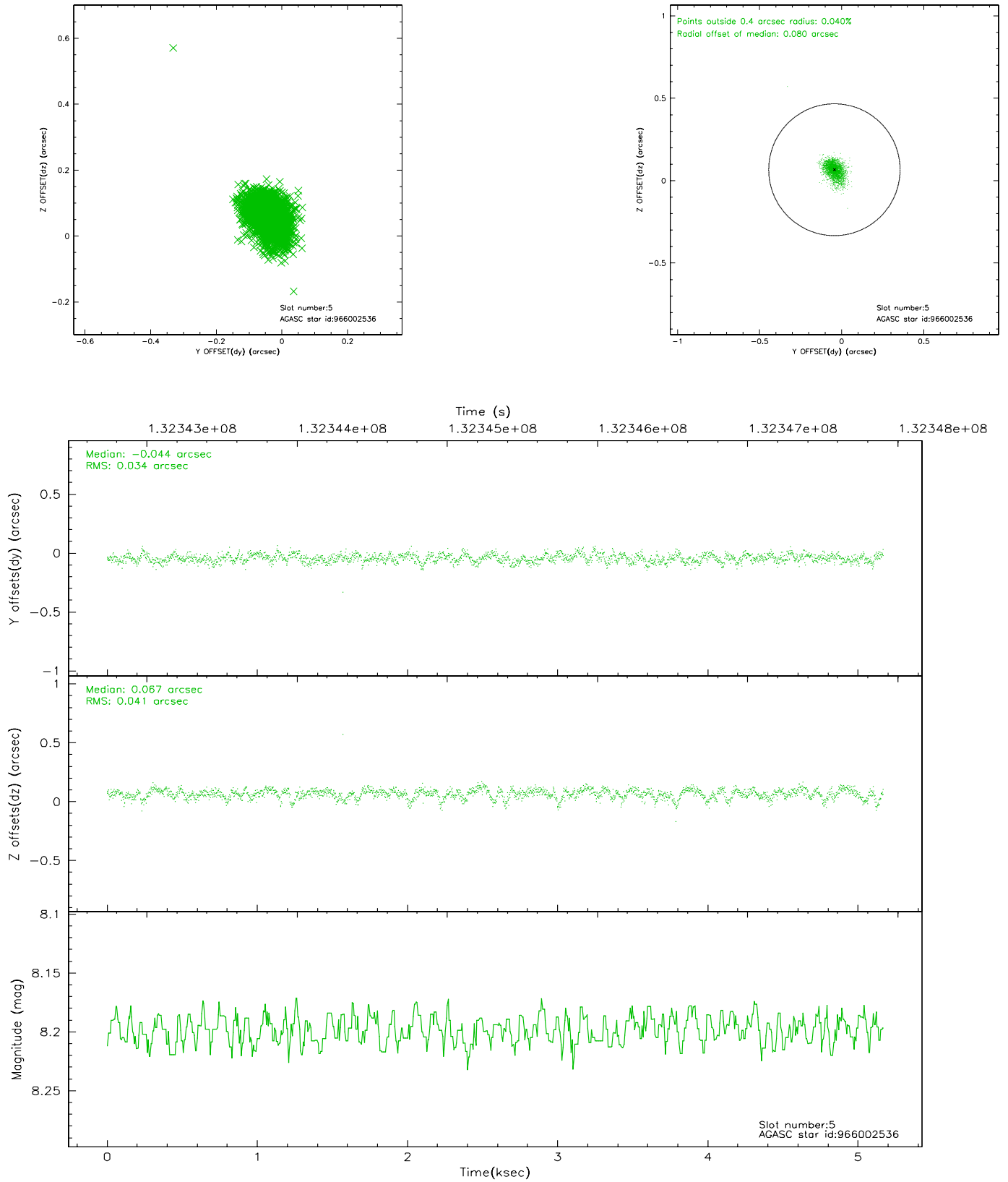
2.4.1 Slot 3



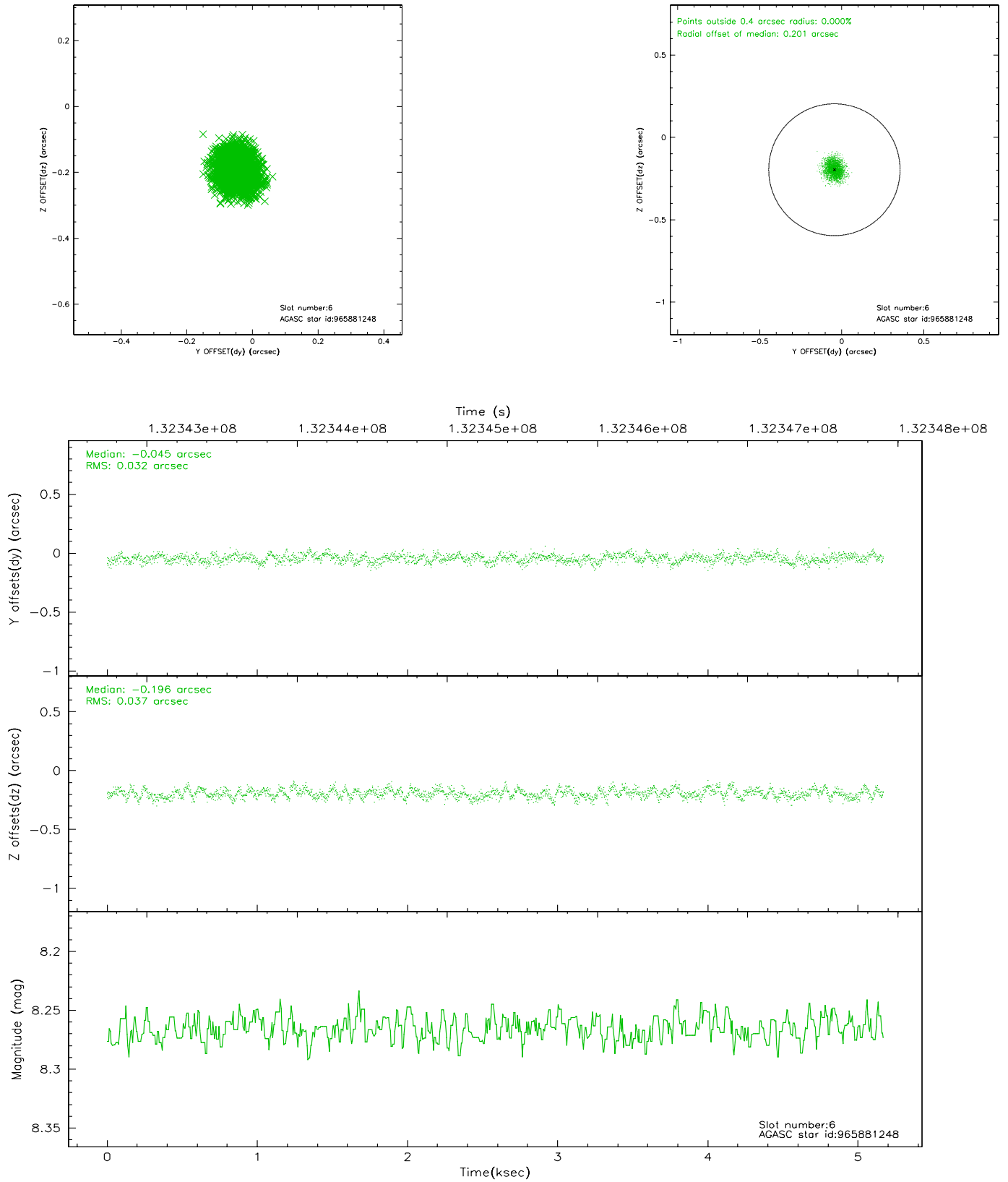
2.4.2 Slot 4



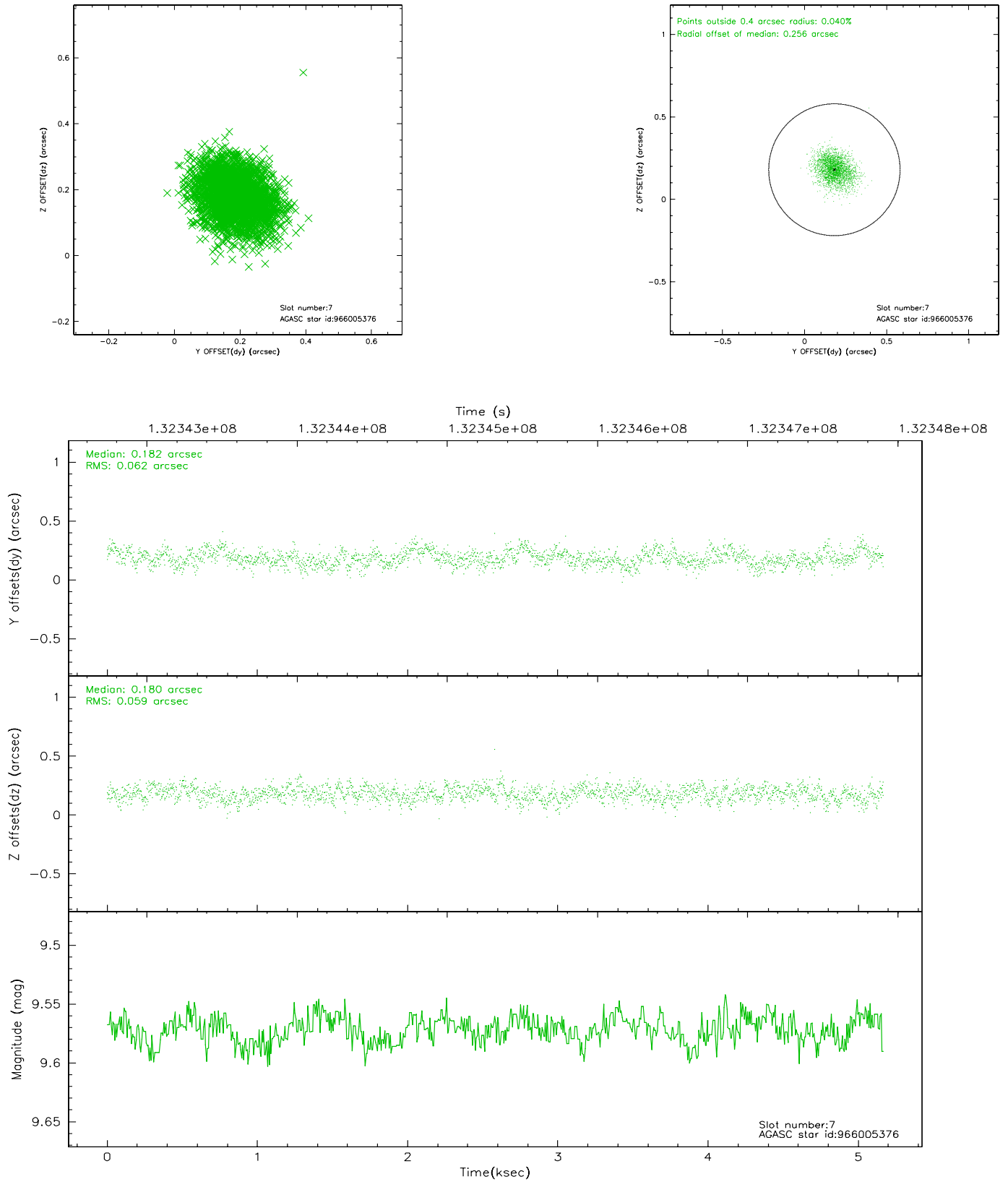
2.4.3 Slot 5



2.4.4 Slot 6

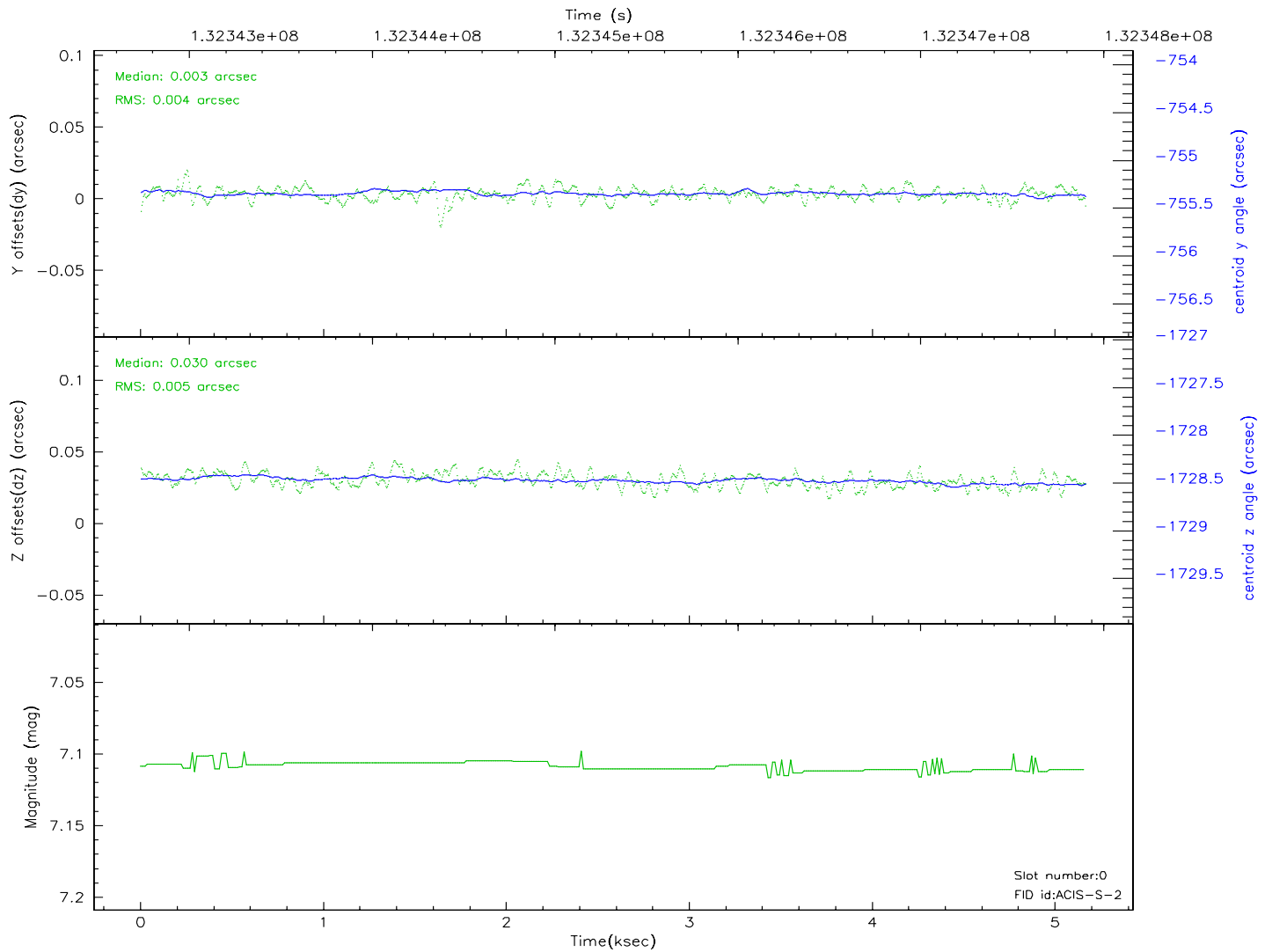
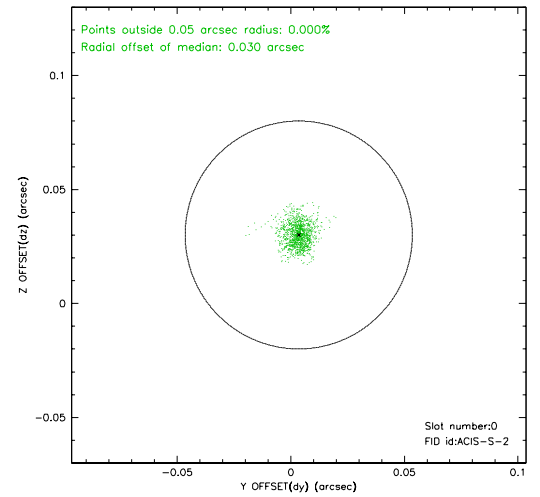
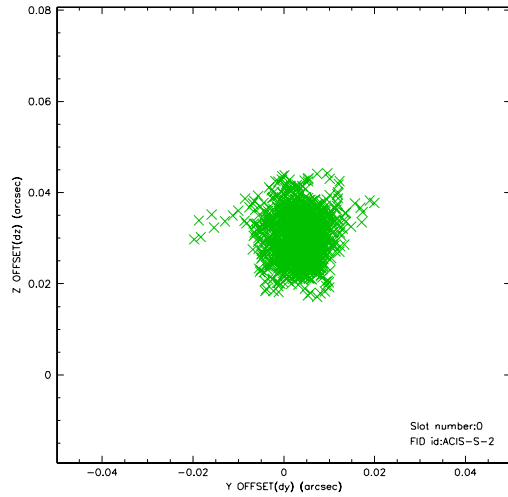


2.4.5 Slot 7

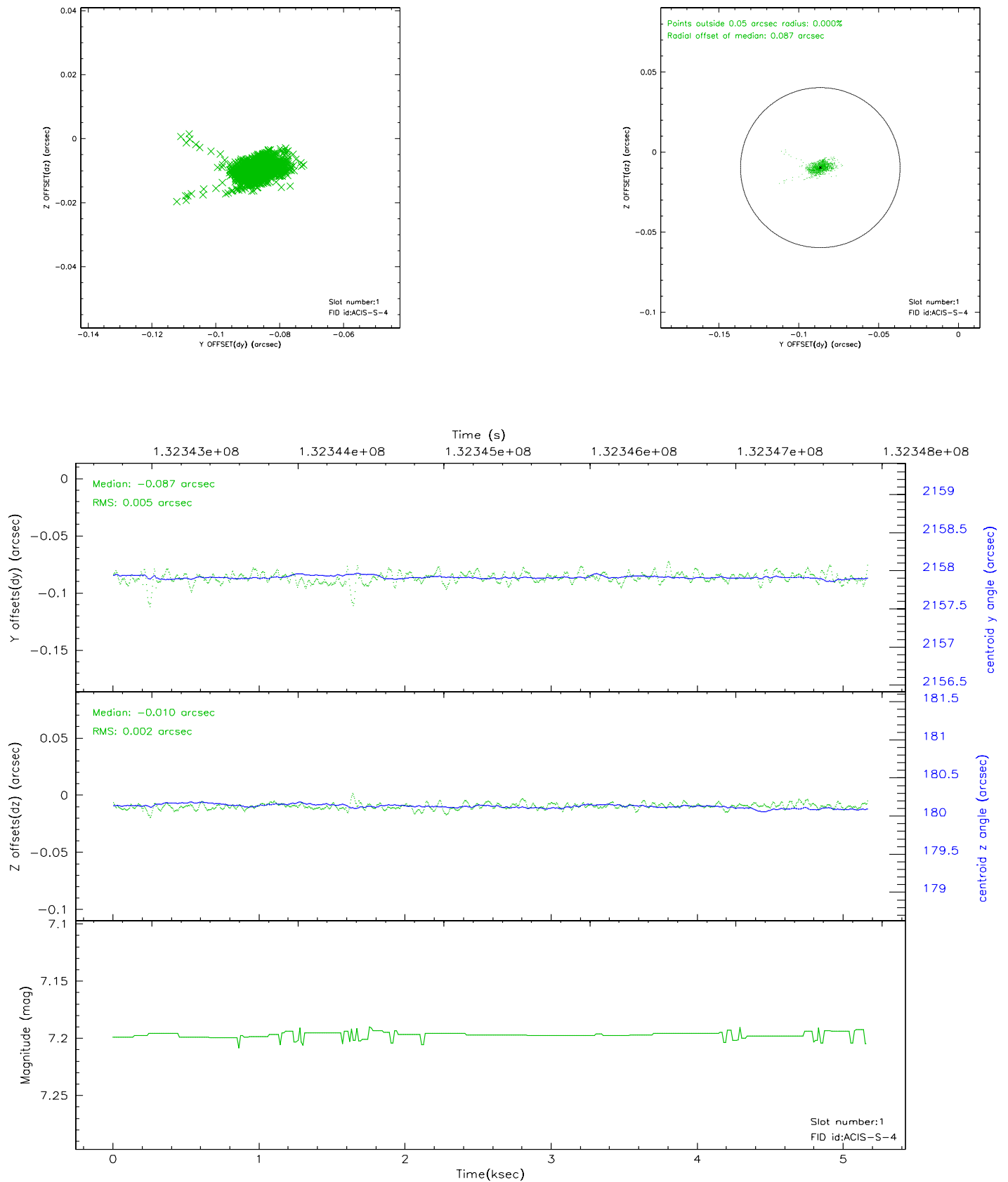


2.5 FID Slots

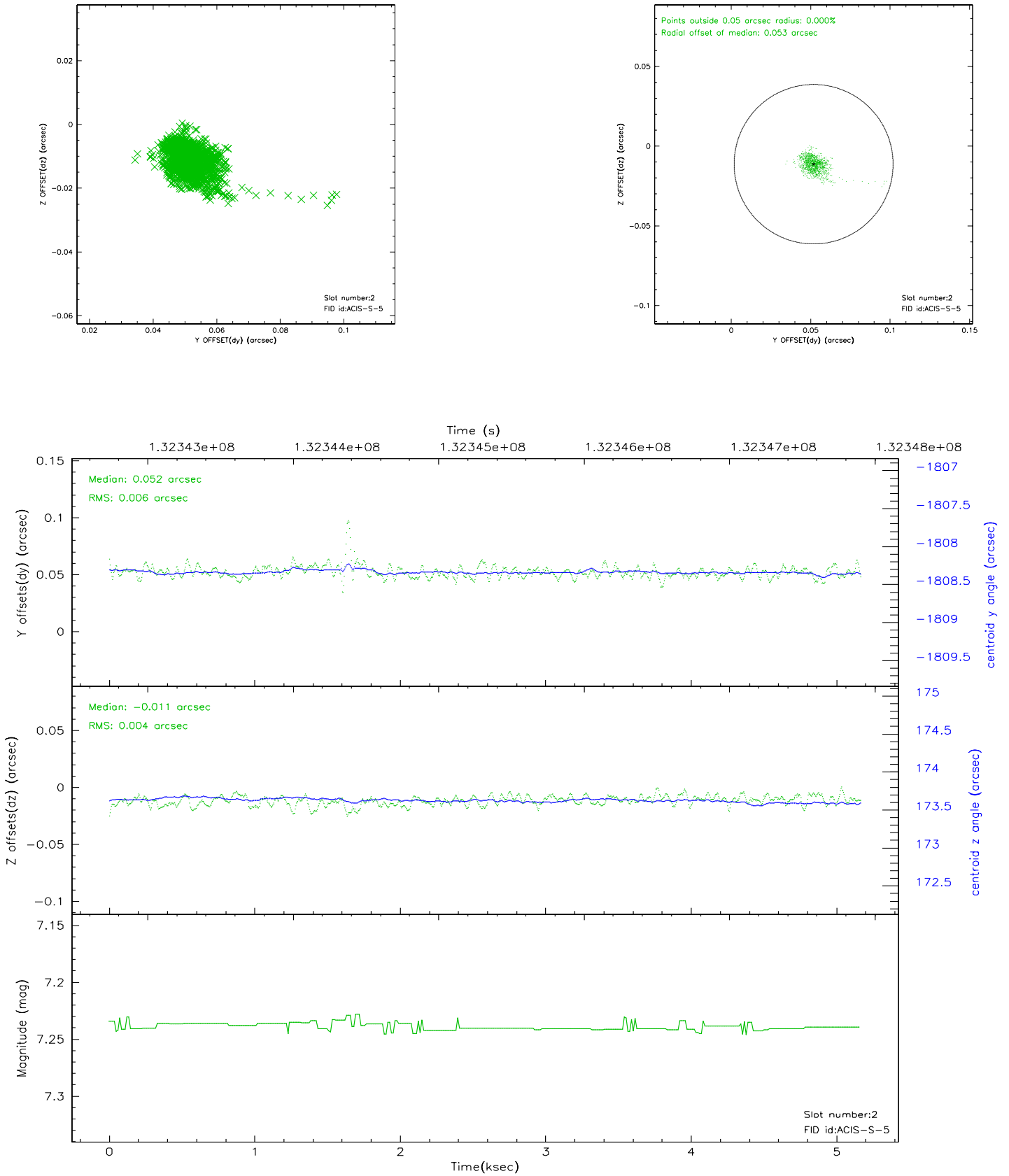
2.5.1 Slot 0



2.5.2 Slot 1



2.5.3 Slot 2



A Summary

A.1 Status

V&V Scientist	Beth Sundheim
V&V Date (YYYY-MM-DD)	2006.09.06
V&V Edition	1
V&V Disposition and Status	OK
V&V Charge Time	4.654

A.2 Comments