

V&V Reference Report

L2 ASCDS Version : 7.6.9

Observation 2692 - L2 Version 001
Chandra X-Ray Center

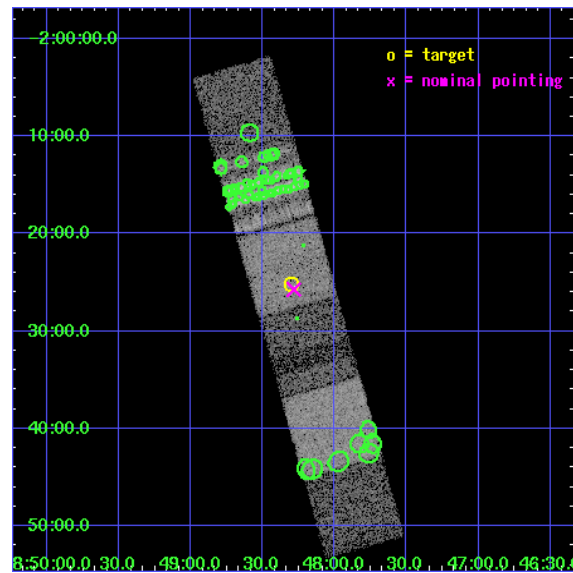
L2 Processing Date : Sep 28 2006

Contents

1	Front	2
2	OBI	3
2.1	OBI	3
2.1.1	Images	3
2.1.2	Parameters	4
2.1.3	Events	4
2.2	Compared Parameters	5
2.3	Aspect	6
2.4	Star Slots	9
2.4.1	Slot 3	9
2.4.2	Slot 4	10
2.4.3	Slot 5	11
2.4.4	Slot 6	12
2.4.5	Slot 7	13
2.5	FID Slots	14
2.5.1	Slot 0	14
2.5.2	Slot 1	15
2.5.3	Slot 2	16
3	Point Sources	17
A	Summary	18
A.1	Status	18
A.2	Comments	18

1 Front

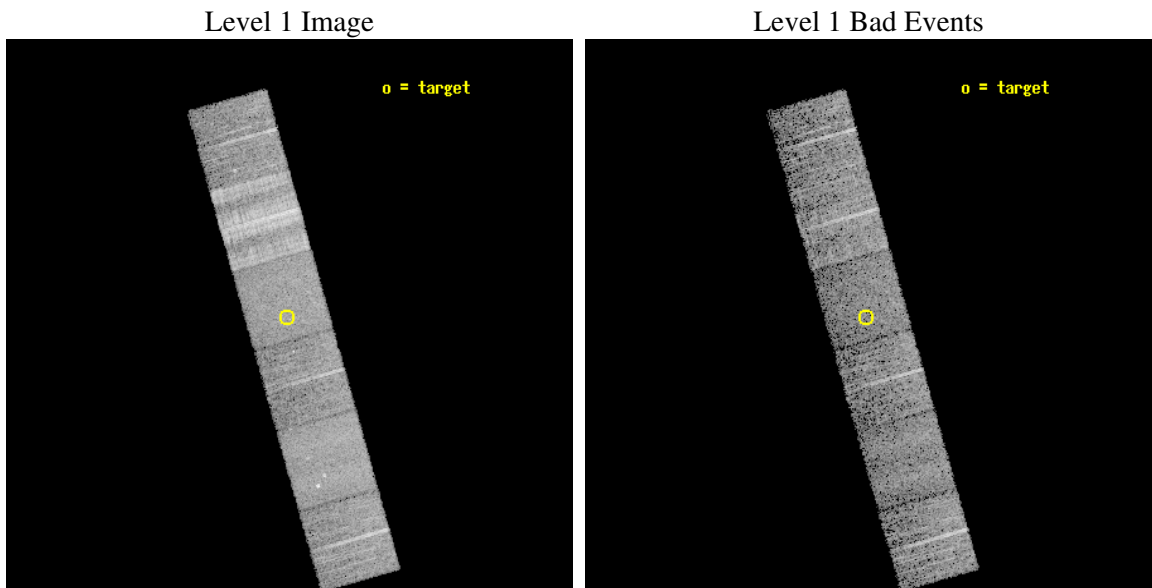
seq_num	400172
obs_id	2692
title	OBSERVATIONS OF THE TRANSIENT X-RAY PULSAR 2S 1845-024
observer	Dr. Mark Finger
object	2S 1845-024
dtcycle	0
cycle	P
ra_targ	282.075
dec_targ	-2.42
ra_nom	282.07085917348
dec_nom	-2.4286907555606
roll_nom	254.19635978224
revision	2
ontime	4956.7999815345
livetime	4894.0339955417
ontime4	4956.7999815345
ontime5	4956.7999815345
ontime6	4956.7999815345
ontime7	4956.7999815345
ontime8	4956.7999815345
ontime9	4956.7999815345
l2events	77019



2 OBI

2.1 OBI

2.1.1 Images



2.1.2 Parameters

obi_num	1
ascdsver	7.6.9
caldsver	3.2.3
date	2006-09-28T16:47:36
revision	2

sched_exp_time	5000.000000
ontime	4961.9768846631
ontime4	4961.9768846631
ontime5	4961.9768846631
ontime6	4961.9768846631
ontime7	4961.9768846631
ontime8	4961.9768846631
ontime9	4961.9768846631
l1events	291465

2.1.3 Events

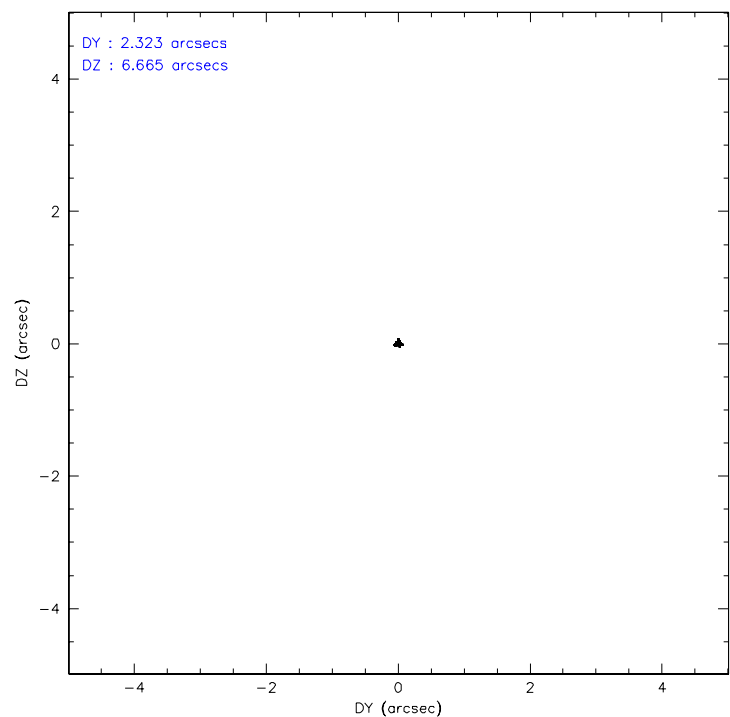
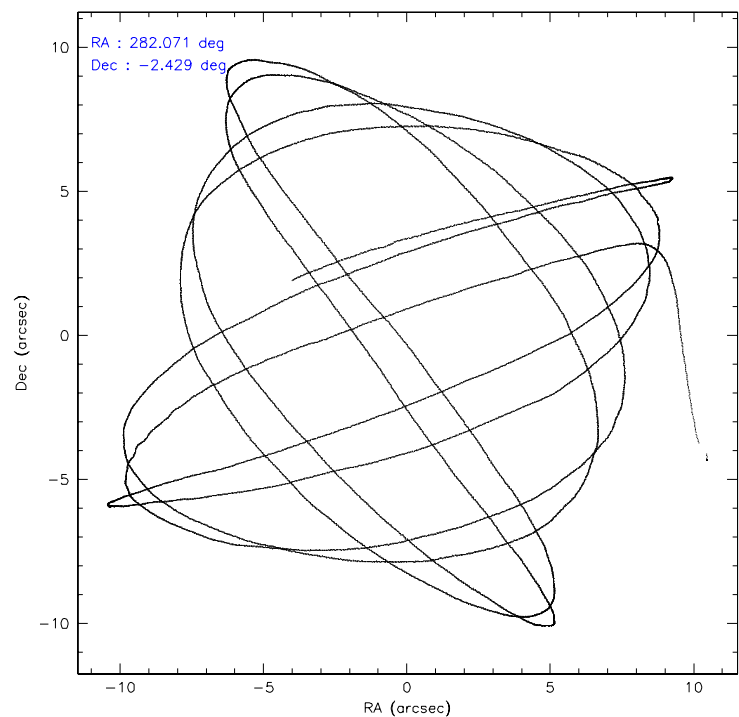
	ccd 4	ccd 5	ccd 6	ccd 7	ccd 8	ccd 9
level 1 events	43389	49893	38421	44241	76904	38617
rejected events	35127	27711	31286	26286	37668	31301
rejected %	80%	55%	81%	59%	48%	81%

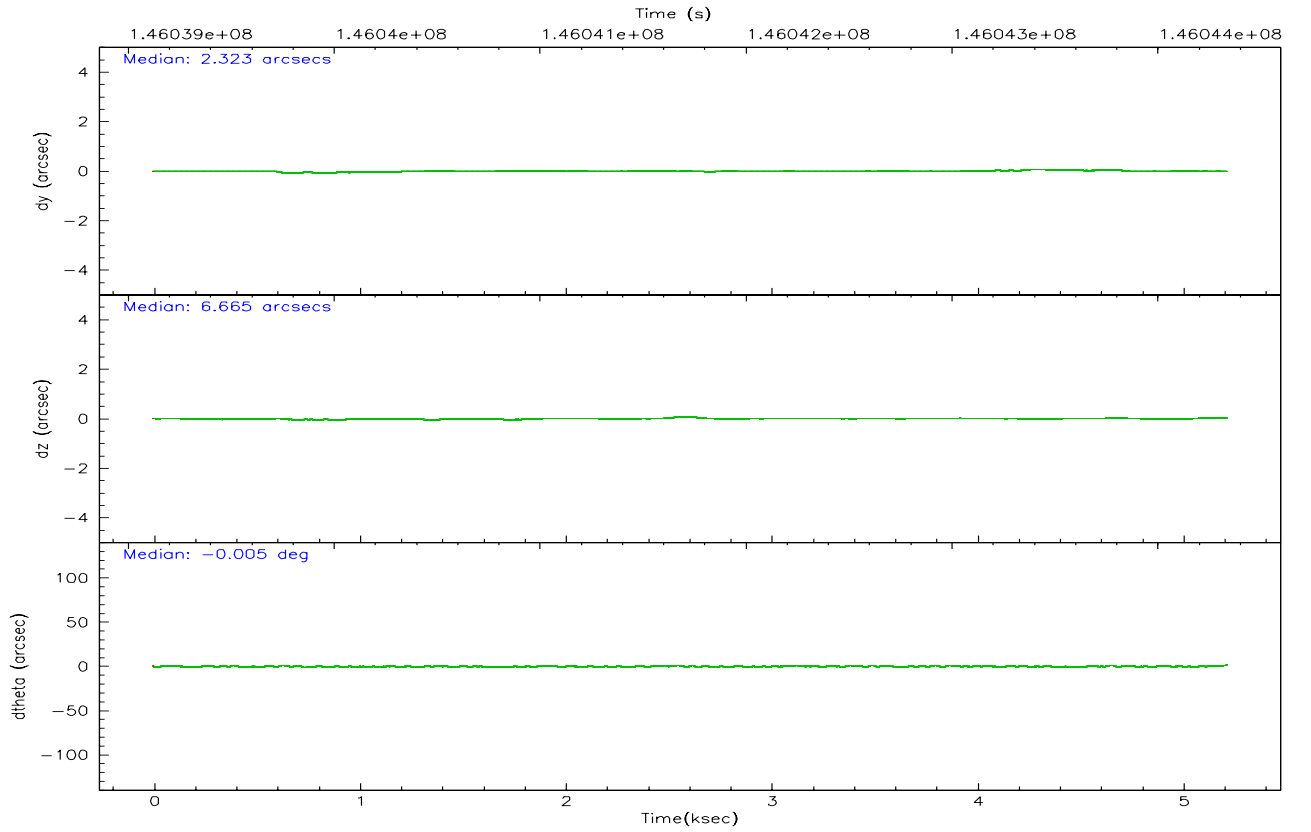
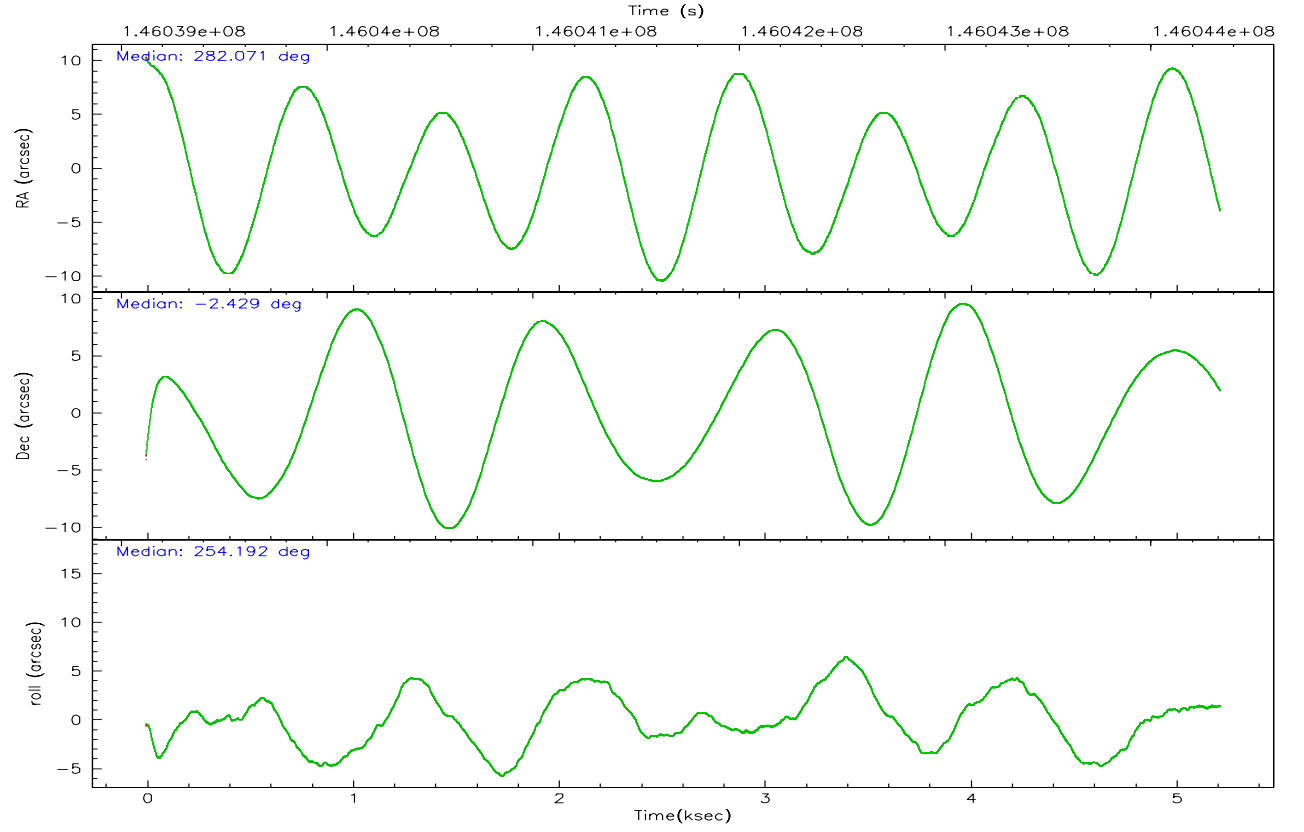
	ccd 4	ccd 5	ccd 6	ccd 7	ccd 8	ccd 9
grade 0 events	2329	1869	2258	1165	13531	2042
	5%	3%	5%	2%	17%	5%
grade 1 events	26	72	14	30	116	13
	0%	0%	0%	0%	0%	0%
grade 2 events	3613	6550	2737	4522	6168	3026
	8%	13%	7%	10%	8%	7%
grade 3 events	302	760	323	1007	6814	311
	0%	1%	0%	2%	8%	0%
grade 4 events	315	728	323	989	6019	320
	0%	1%	0%	2%	7%	0%
grade 5 events	915	2195	1203	2703	1705	1143
	2%	4%	3%	6%	2%	2%
grade 6 events	1715	12321	1502	10301	6742	1632
	3%	24%	3%	23%	8%	4%
grade 7 events	34174	25398	30061	23524	35809	30130
	78%	50%	78%	53%	46%	78%

2.2 Compared Parameters

Parameter	Planned	Actual	Parameter	Planned	Actual
Instrument	ACIS	ACIS	Obspar format version number	6	6
Detector	ACIS-456789	ACIS-456789	Obspar file type	PREDICTED	ACTUAL
Grating	NONE	NONE	Obspar update status	NONE	UPDATED
Data mode	GRADED	GRADED	Number of optional ACIS chips dropped	0	0
Observation mode	POINTING	POINTING	On-chip summing requested	N	N
Pointing RA	282.063726	282.0708591734829	Subarray requested	NONE	NONE
Pointing Dec	-2.402389	-2.428690755560616	Alternating exposures requested	N	N
Pointing Roll	254.039419	254.1963597822399	Primary exposure time	0.000000	3.2
Window start time	144201664.184000	144201664.184000			
Window stop time	146793664.184000	146793664.184000			
SIM focus pos (mm)	-0.684267	-0.6828225247311905			
SIM defocus (mm)	0	0.001444936568705701			
SIM translation stage pos (mm)	-190.132523	-190.1400660498719			
SIM translation stage offset (mm)	0	0.00754346686406393			
Observation start time	146039330.184000	146038355.80539			
Observation start date	2002-08-18T06:27:46	2002-08-18T06:12:35			
Observation end time	146044330.184000	146044628.80564			
Observation end date	2002-08-18T07:51:06	2002-08-18T07:57:08			
Read mode	TIMED	TIMED			

2.3 Aspect



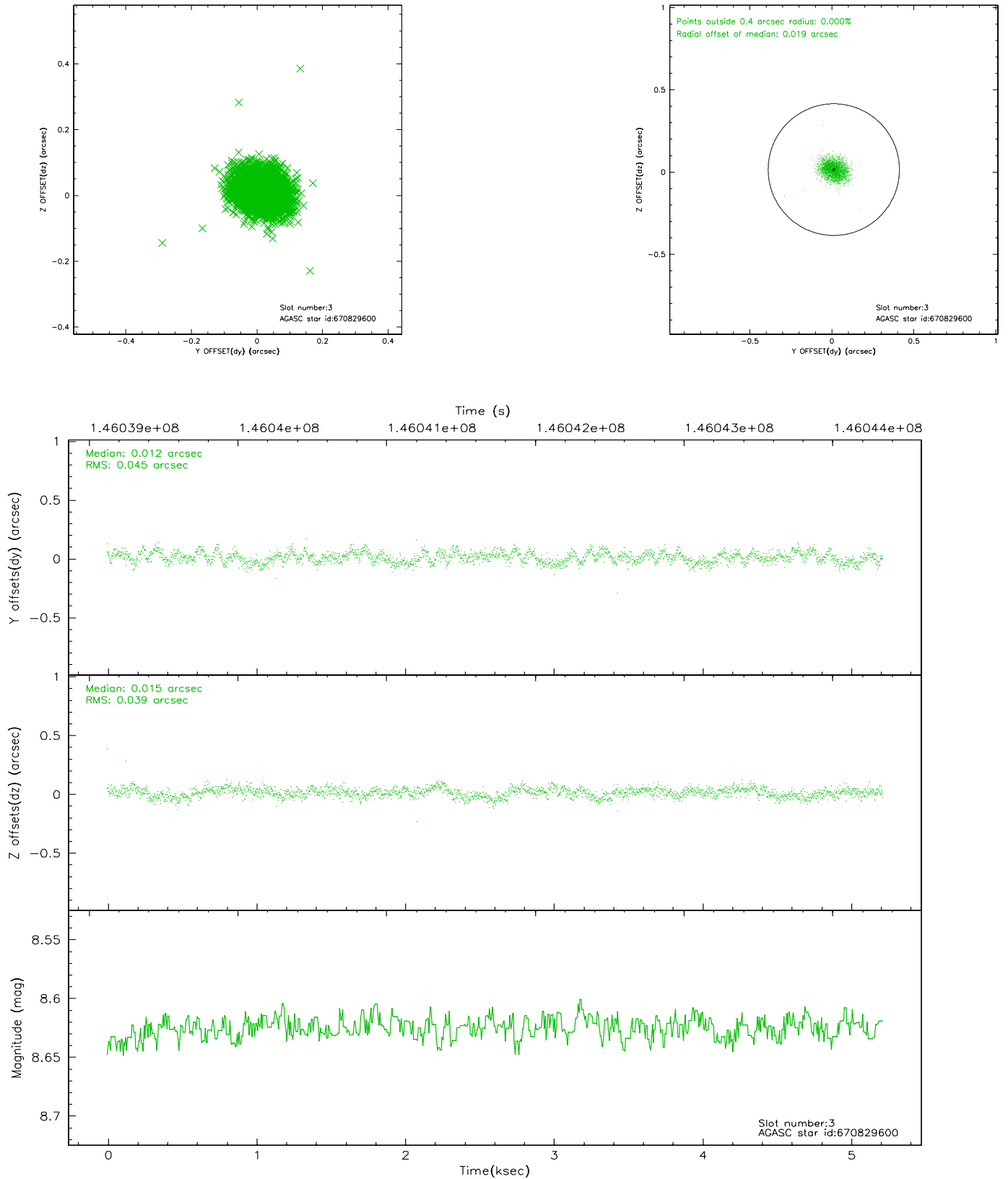


Slot Statistics

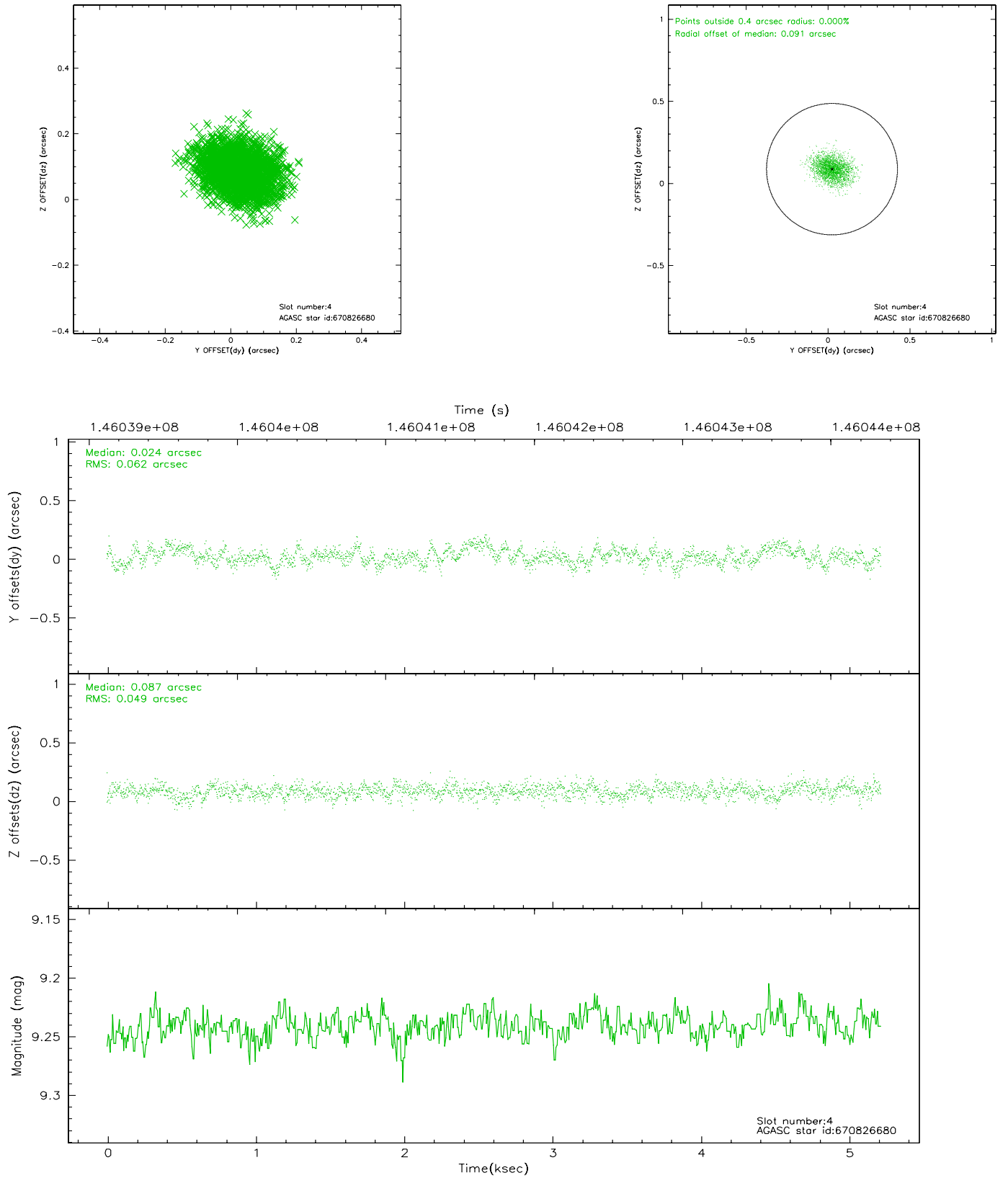
slot	status	id	mag	n_pts	med_dy	med_dz	dr1	dr2	ra	dec	mean_y	mean_z
0	FID	ACIS-S-2	7.12	1273	-0.020	0.034	0.007	0.011	0.000000	0.000000	-754.95	-1727.80
1	FID	ACIS-S-4	7.20	1273	-0.070	0.001	0.005	0.009	0.000000	0.000000	2157.74	179.49
2	FID	ACIS-S-5	7.24	1273	0.059	-0.026	0.006	0.010	0.000000	0.000000	-1806.24	174.41
3	GUIDE	670829600	8.62	2546	0.012	0.015	0.064	0.100	282.227270	-3.031765	2016.41	1187.51
4	GUIDE	670826680	9.24	2545	0.024	0.087	0.084	0.137	282.619566	-2.432067	-446.28	1951.13
5	GUIDE	670829768	7.53	2546	-0.082	0.009	0.063	0.095	281.927934	-2.010470	-1222.65	-858.05
6	GUIDE	670828544	9.73	2523	-0.028	-0.037	0.113	0.191	281.777864	-2.435541	396.85	-957.13
7	GUIDE	670827744	9.52	2545	0.083	-0.076	0.092	0.150	281.699180	-2.020401	-961.29	-1640.67

2.4 Star Slots

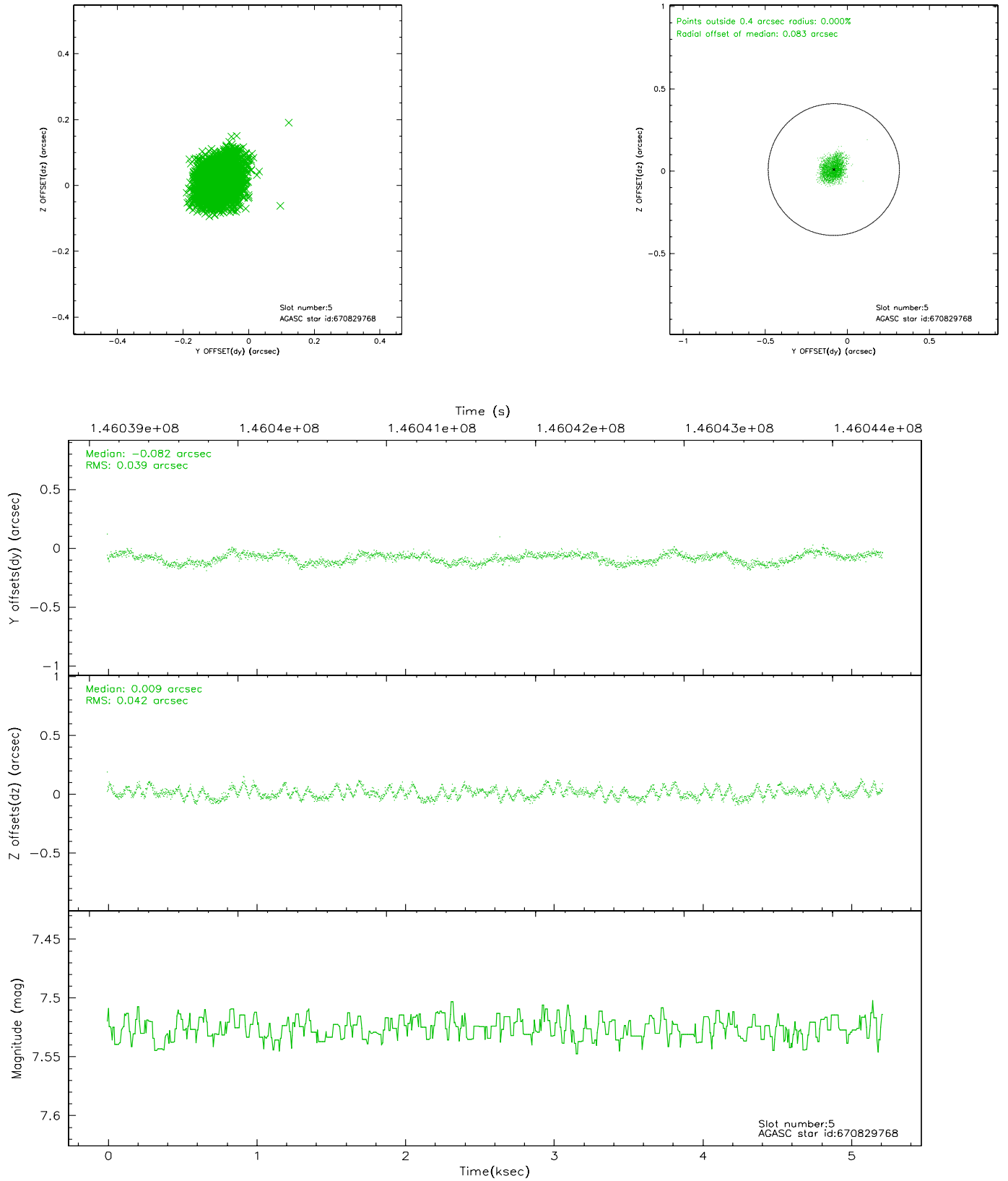
2.4.1 Slot 3



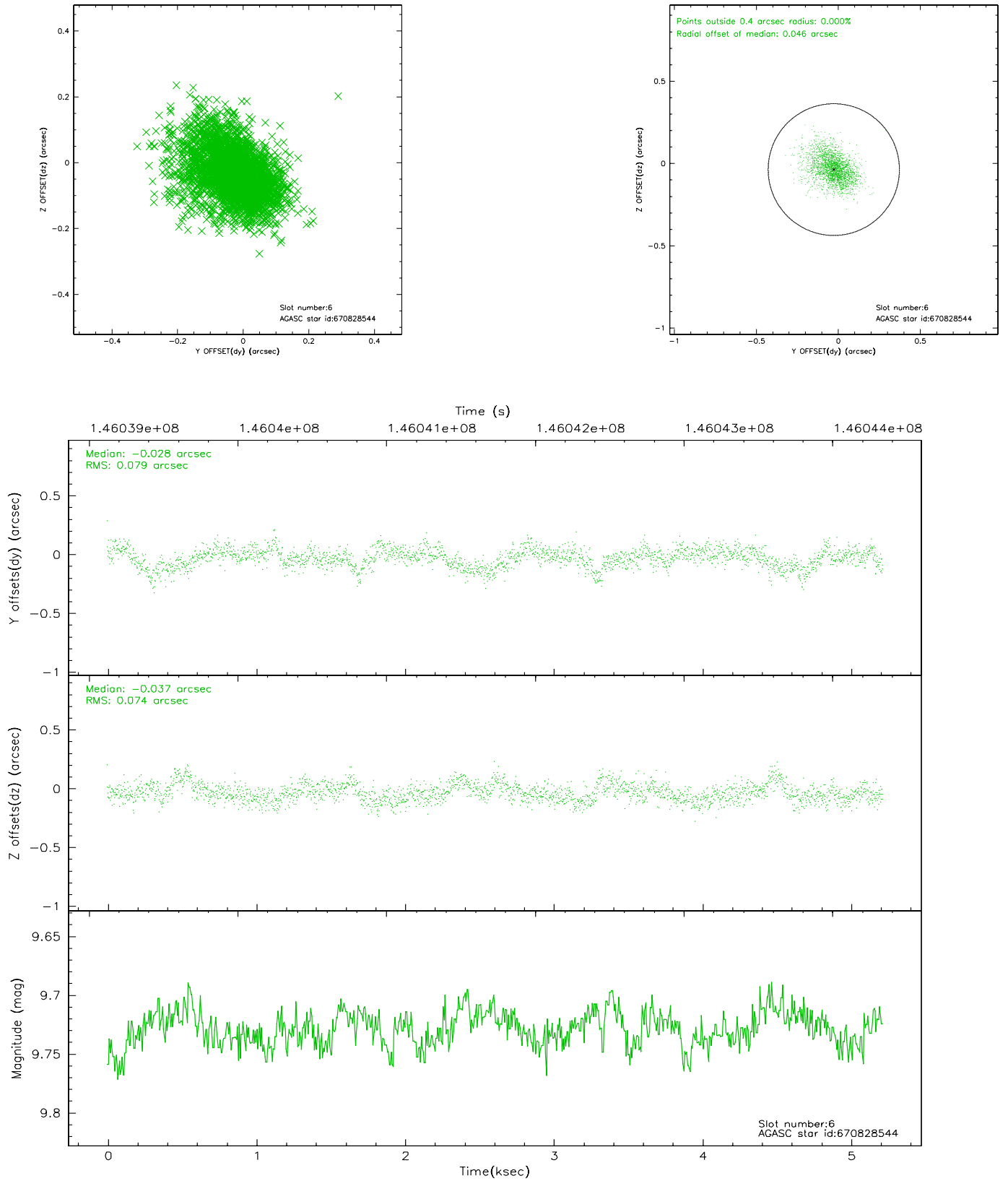
2.4.2 Slot 4



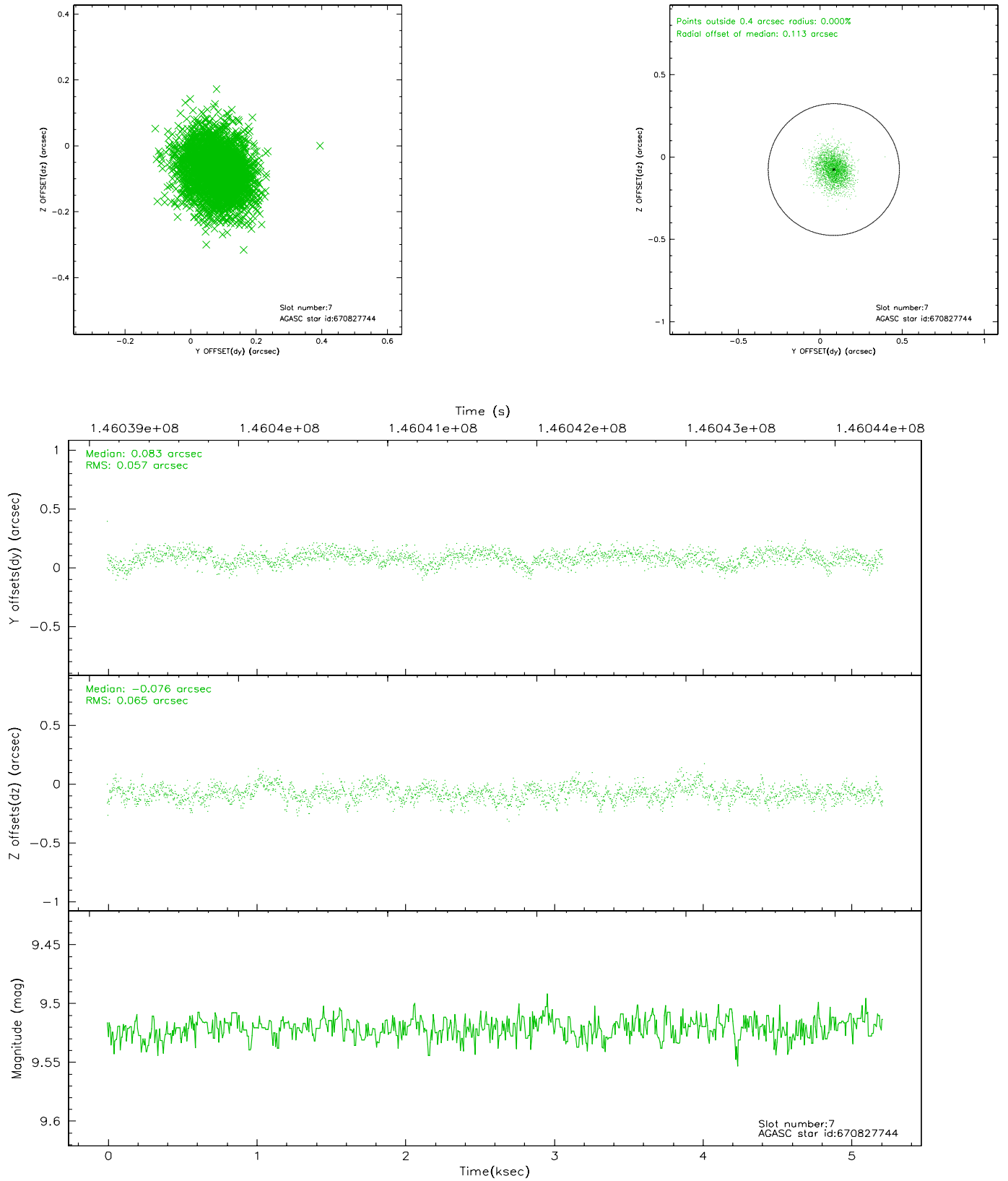
2.4.3 Slot 5



2.4.4 Slot 6

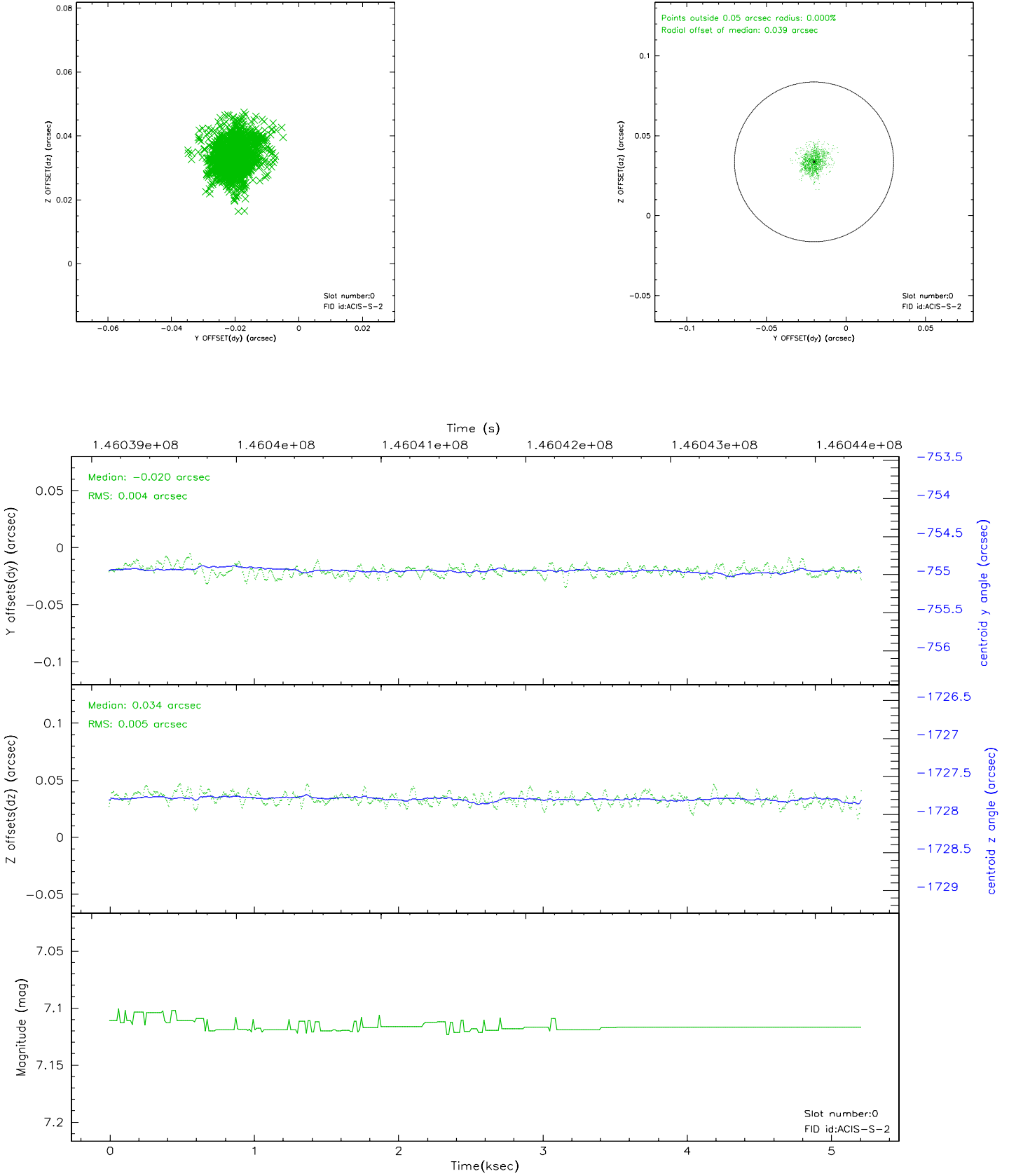


2.4.5 Slot 7

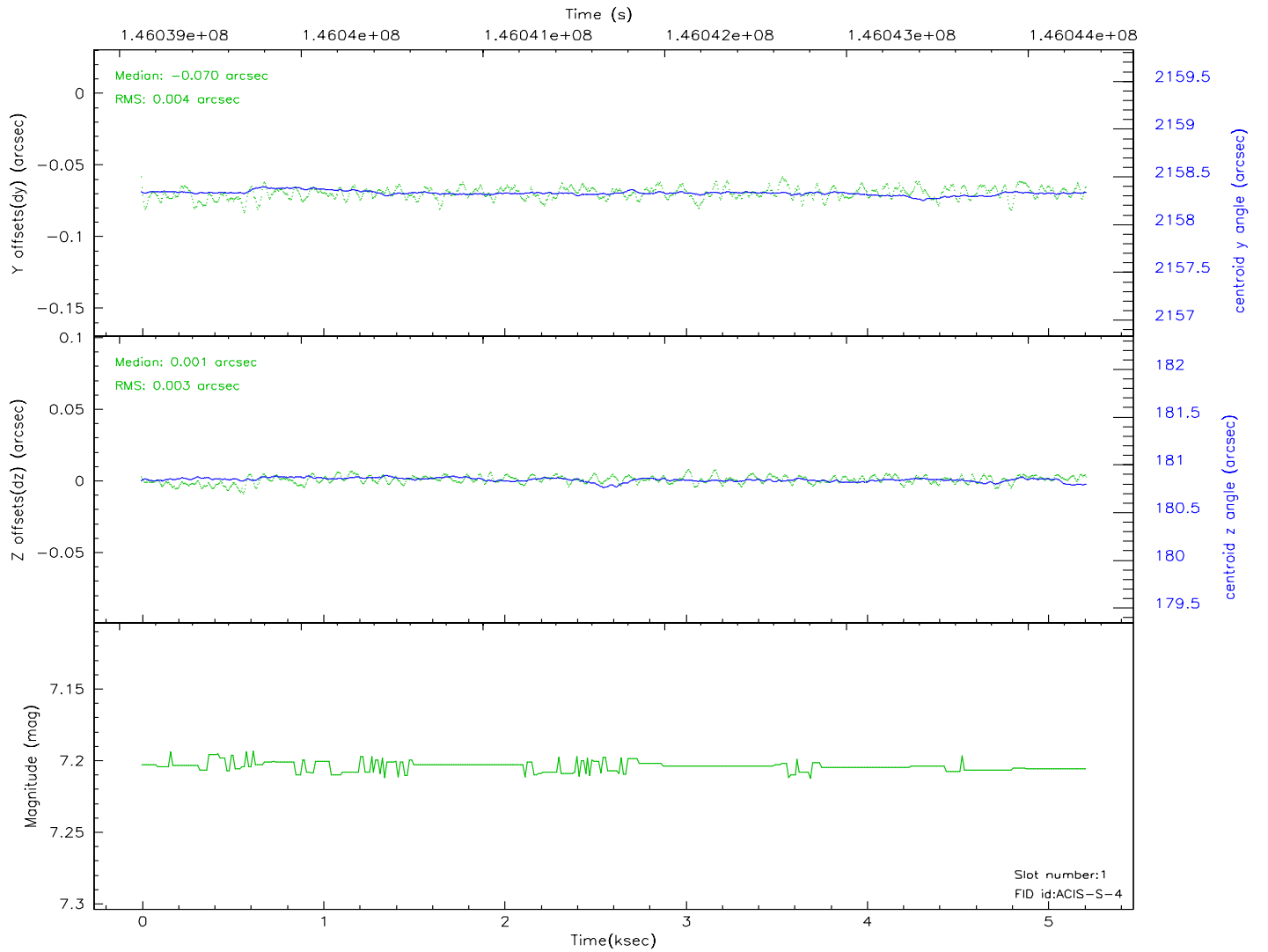
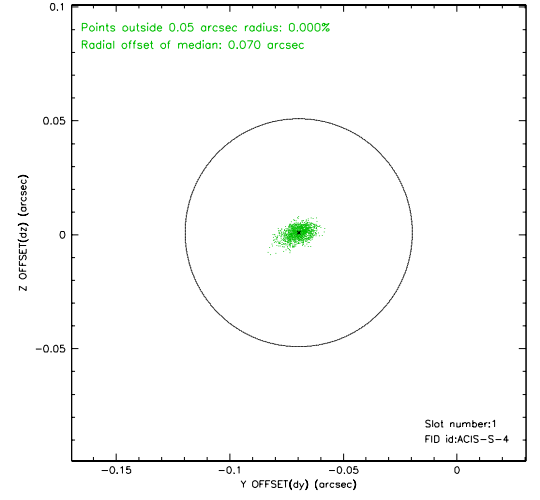
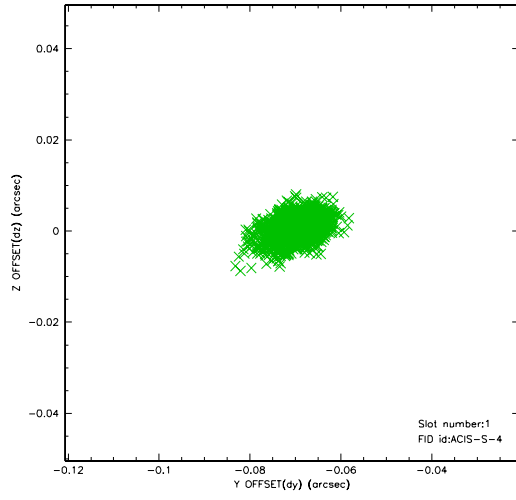


2.5 FID Slots

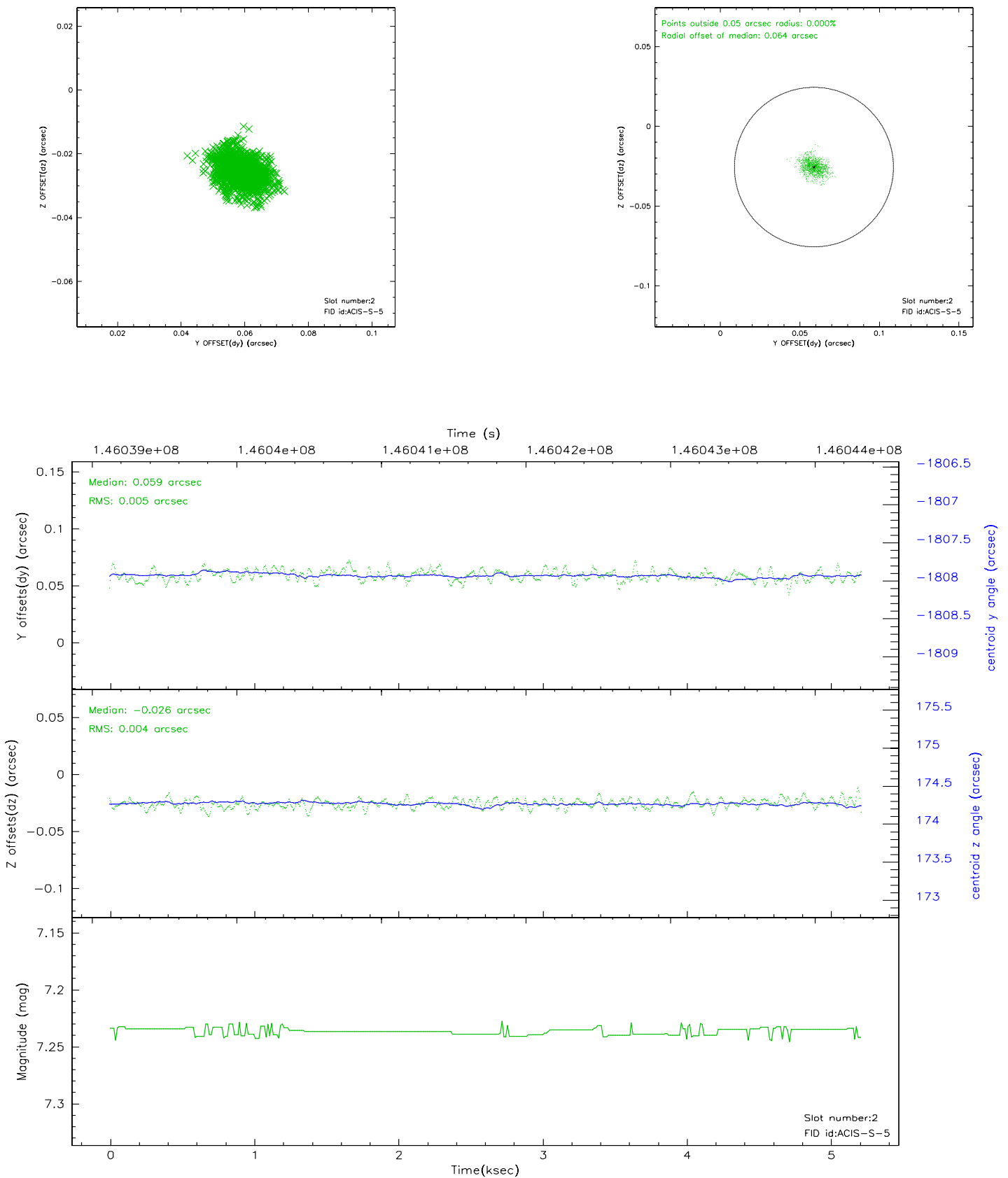
2.5.1 Slot 0



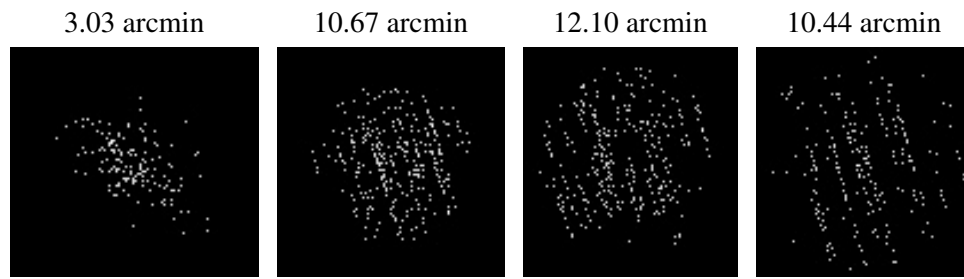
2.5.2 Slot 1



2.5.3 Slot 2



3 Point Sources



A Summary

A.1 Status

V&V Scientist	Jen Lauer
V&V Date (YYYY-MM-DD)	2006.09.28
V&V Edition	1
V&V Disposition and Status	OK
V&V Charge Time	4.959

A.2 Comments

Window constraint met.

Focal plane temperature is warmer than -118.7 C degrees during the entire observation. The ACIS spectral response calibration for the front-illuminated chips is less accurate at these warmer temperatures than it is at -119.7 C. The back-illuminated chips are not affected at the focal plane temperatures recorded for this observation. Users whose science objectives depend on the most accurate spectral response (i.e.: fitting line-rich spectra) may notice an effect. Users whose science objectives do not depend on the most accurate spectral response should not notice an effect.