

# V&V Reference Report

## L2 ASCDS Version : 7.6.9

Observation 2668 - L2 Version 001  
Chandra X-Ray Center

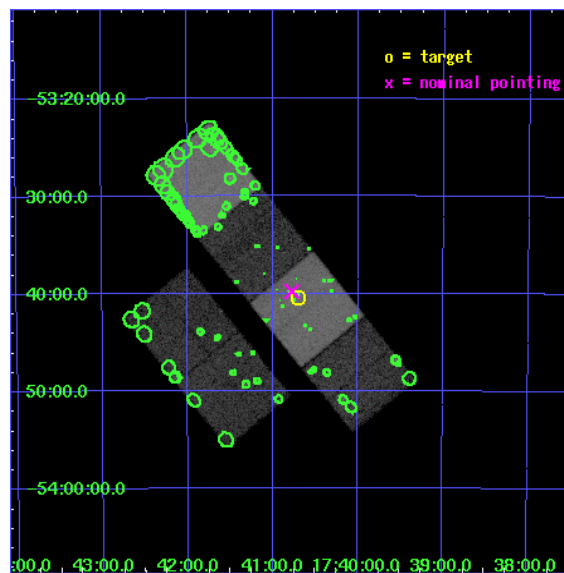
L2 Processing Date : Sep 16 2006

## Contents

<b>1</b>	<b>Front</b>	<b>2</b>
<b>2</b>	<b>OBI</b>	<b>3</b>
2.1	OBI . . . . .	3
2.1.1	Images . . . . .	3
2.1.2	Bias . . . . .	3
2.1.3	Parameters . . . . .	4
2.1.4	Events . . . . .	4
2.2	Compared Parameters . . . . .	5
2.3	Aspect . . . . .	6
2.4	Star Slots . . . . .	9
2.4.1	Slot 3 . . . . .	9
2.4.2	Slot 4 . . . . .	10
2.4.3	Slot 5 . . . . .	11
2.4.4	Slot 6 . . . . .	12
2.4.5	Slot 7 . . . . .	13
2.5	FID Slots . . . . .	14
2.5.1	Slot 0 . . . . .	14
2.5.2	Slot 1 . . . . .	15
2.5.3	Slot 2 . . . . .	16
<b>3</b>	<b>Point Sources</b>	<b>17</b>
<b>A</b>	<b>Summary</b>	<b>18</b>
A.1	Status . . . . .	18
A.2	Comments . . . . .	18

# 1 Front

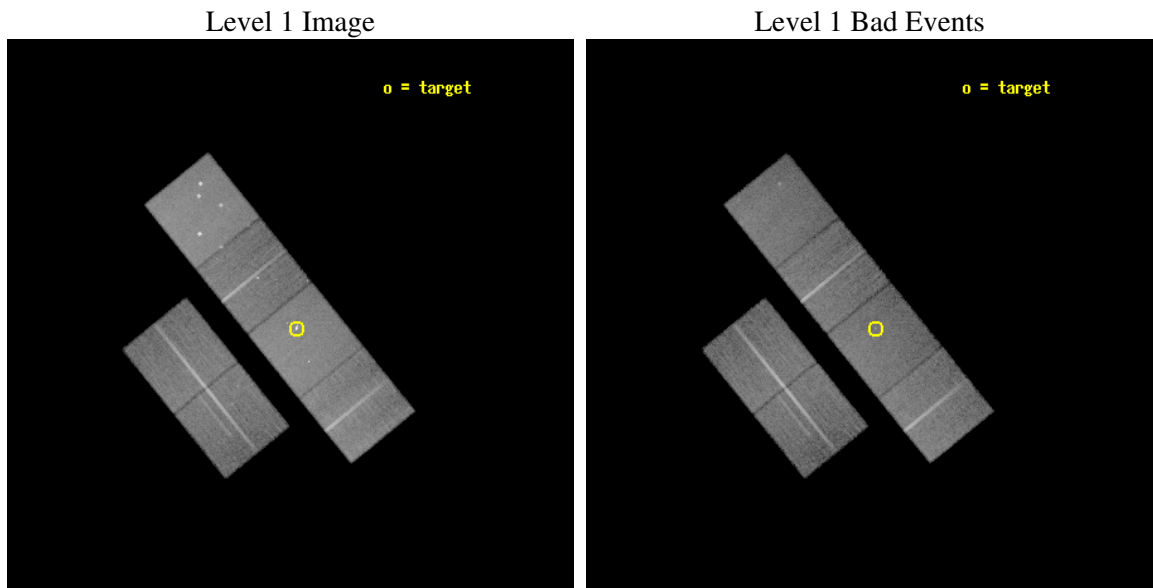
seq_num	300069
obs_id	2668
title	RESOLVING THE COMPACT BINARIES IN NGC 6397
observer	Dr. Stephen Murray
object	NGC6397
dtcycle	0
cycle	P
ra_targ	265.175
dec_targ	-53.674417
ra_nom	265.19396469341
dec_nom	-53.663294640488
roll_nom	50.96208199344
revision	2
ontime	28460.799893975
livetime	28100.412108681
ontime2	28460.799893975
ontime3	28457.558913708
ontime5	28460.799893975
ontime6	28460.799893975
ontime7	28460.799893975
ontime8	28460.799893975
l2events	289510



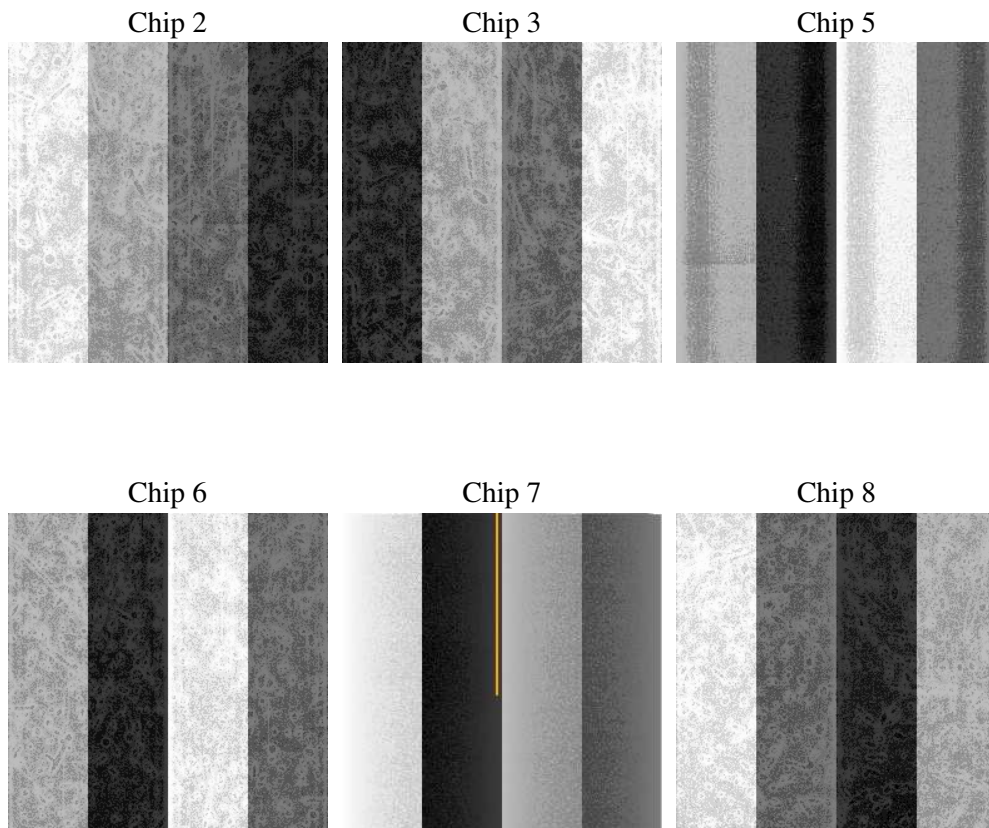
## 2 OBI

### 2.1 OBI

#### 2.1.1 Images



#### 2.1.2 Bias



### 2.1.3 Parameters

obi_num	1
ascdsver	7.6.9
caldsver	3.2.3
date	2006-09-16T10:55:56
revision	2

sched_exp_time	28500.000000
ontime	28465.763441145
ontime2	28465.763441145
ontime3	28462.52244097
ontime5	28465.763441145
ontime6	28465.763441145
ontime7	28465.763441145
ontime8	28465.763421237
l1events	1284749

### 2.1.4 Events

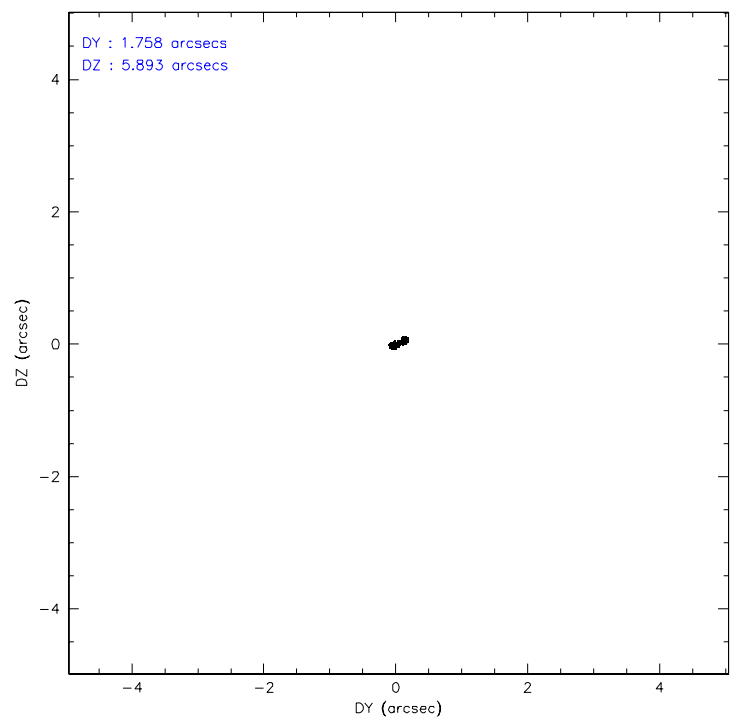
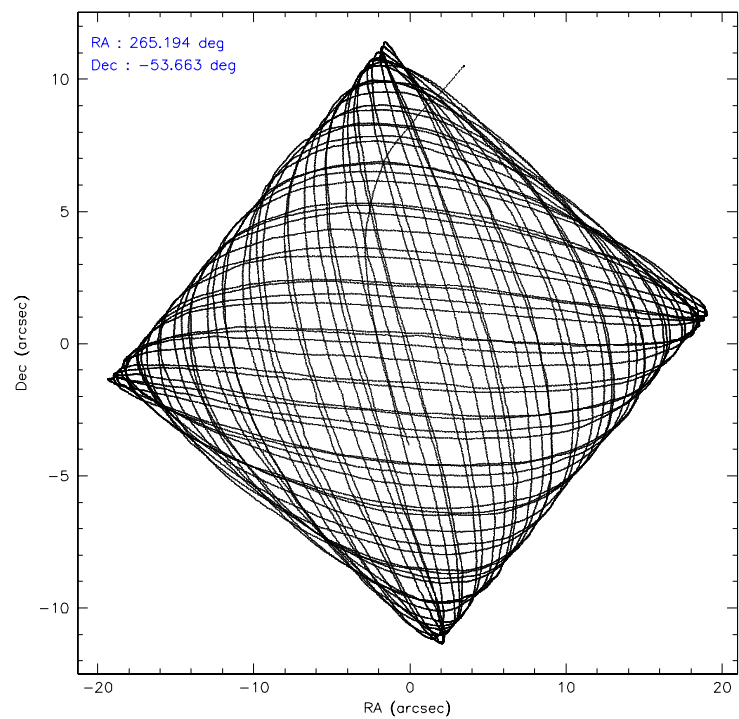
	ccd 2	ccd 3	ccd 5	ccd 6	ccd 7	ccd 8
level 1 events	184561	173618	266861	185256	246636	227817
rejected events	162811	152035	143867	161665	145768	180044
rejected %	88%	87%	53%	87%	59%	79%

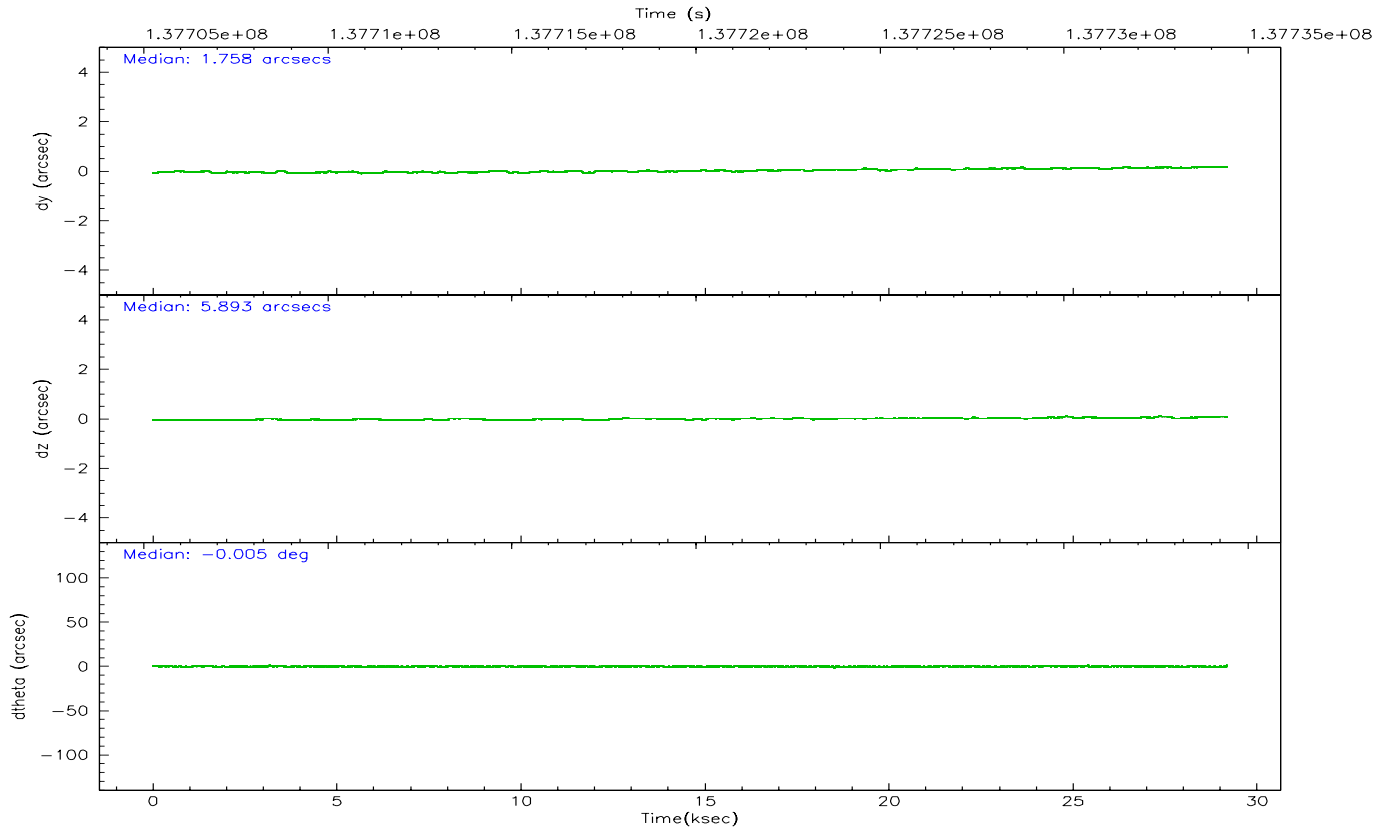
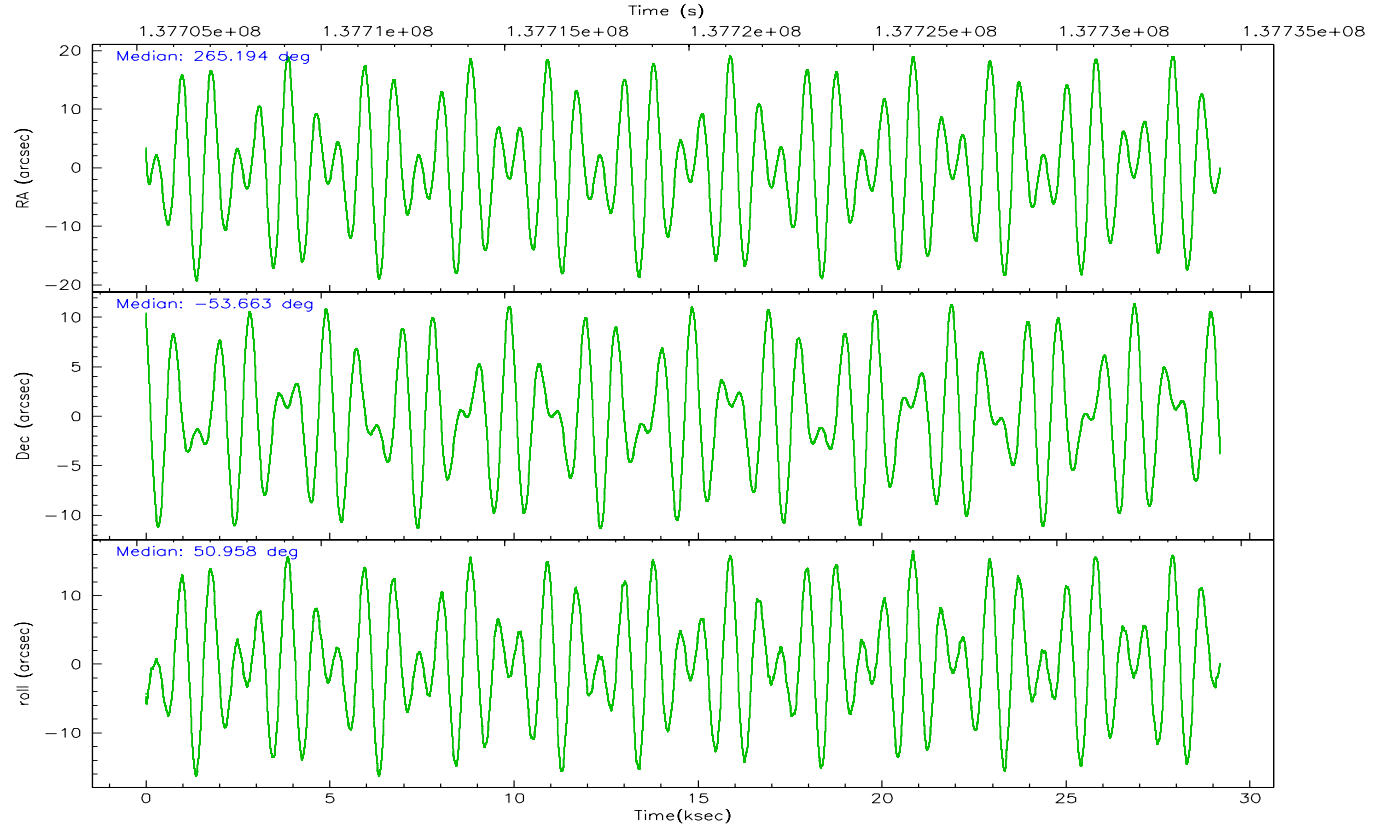
	ccd 2	ccd 3	ccd 5	ccd 6	ccd 7	ccd 8
grade 0 events	9701	9811	15724	10663	8665	15858
	5%	5%	5%	5%	3%	6%
grade 1 events	99	102	518	93	183	143
	0%	0%	0%	0%	0%	0%
grade 2 events	4590	4130	36386	4473	24932	10140
	2%	2%	13%	2%	10%	4%
grade 3 events	1905	1957	2911	2107	5968	5080
	1%	1%	1%	1%	2%	2%
grade 4 events	1949	1957	2849	2094	5751	4689
	1%	1%	1%	1%	2%	2%
grade 5 events	6690	7016	12574	8060	16102	10273
	3%	4%	4%	4%	6%	4%
grade 6 events	3610	3734	65157	4259	55563	12037
	1%	2%	24%	2%	22%	5%
grade 7 events	156017	144911	130742	153507	129472	169597
	84%	83%	48%	82%	52%	74%

## 2.2 Compared Parameters

Parameter	Planned	Actual	Parameter	Planned	Actual
Instrument	ACIS	ACIS	Obspar format version number	6	6
Detector	ACIS-235678	ACIS-235678	Obspar file type	PREDICTED	ACTUAL
Grating	NONE	NONE	Obspar update status	NONE	UPDATED
Data mode	FAINT	FAINT	Number of optional ACIS chips dropped	0	0
Observation mode	POINTING	POINTING	On-chip summing requested	N	N
Pointing RA	265.187317	265.1939646934131	Subarray requested	NONE	NONE
Pointing Dec	-53.690269	-53.66329464048842	Alternating exposures requested	N	N
Pointing Roll	50.800100	50.96208199344046	Primary exposure time	0.000000	3.2
SIM focus pos (mm)	-0.684267	-0.6828225247311905			
SIM defocus (mm)	0	0.001444936568705701			
SIM translation stage pos (mm)	-190.132523	-190.1400660498719			
SIM translation stage offset (mm)	0	0.00754346686406393			
Observation start time	137705936.184000	137704724.67625			
Observation start date	2002-05-13T19:37:52	2002-05-13T19:18:44			
Observation end time	137734436.184000	137735003.68998			
Observation end date	2002-05-14T03:32:52	2002-05-14T03:43:23			
Read mode	TIMED	TIMED			

## 2.3 Aspect





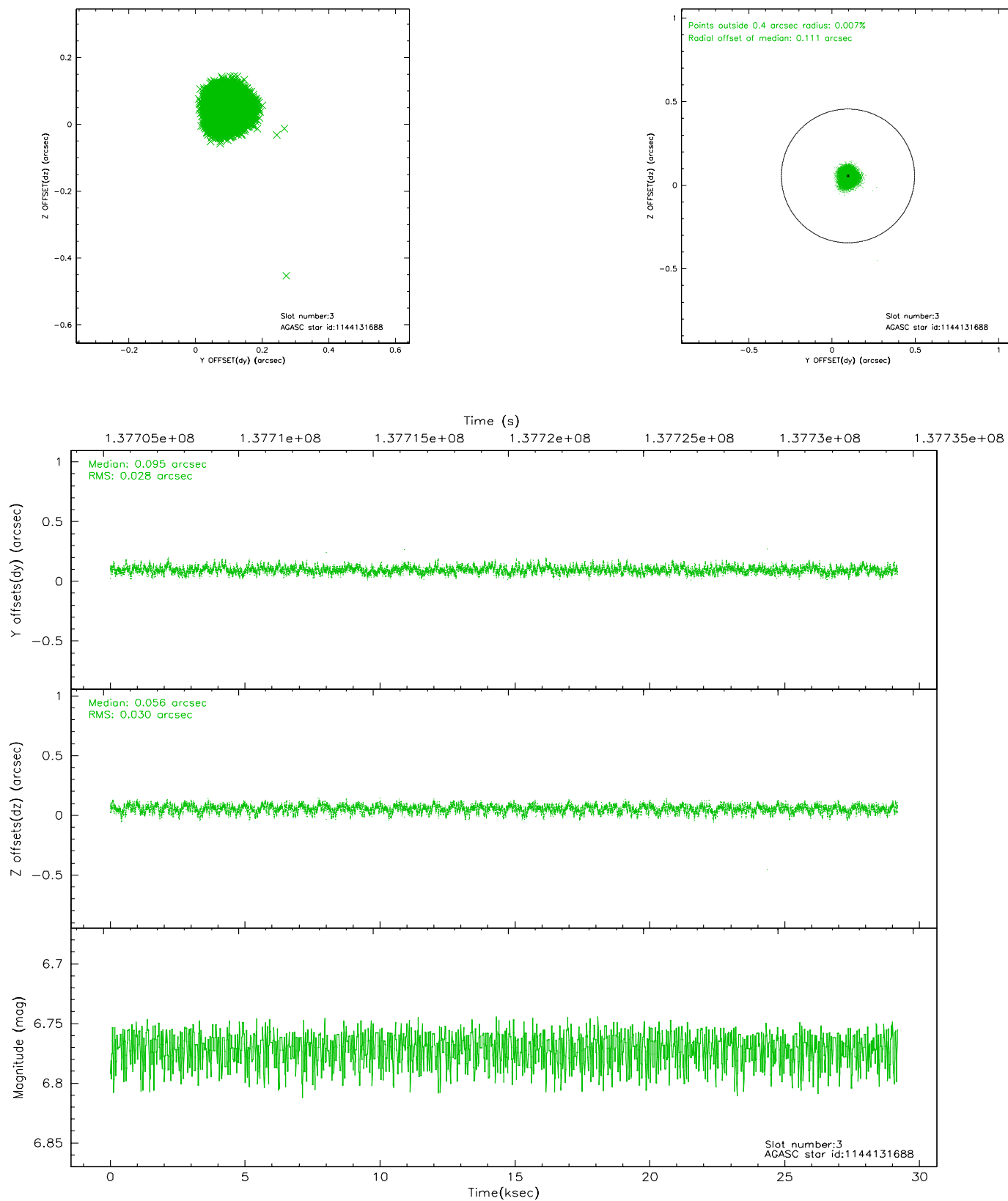
### Slot Statistics

slot	status	id	mag	n_pts	med_dy	med_dz	dr1	dr2	ra	dec	mean_y	mean_z
0	FID	ACIS-S-2	7.11	7119	-0.042	0.024	0.008	0.013	0.000000	0.000000	-754.39	-1727.02
1	FID	ACIS-S-4	7.21	7119	-0.048	0.014	0.005	0.009	0.000000	0.000000	2158.80	181.44
2	FID	ACIS-S-5	7.24	7119	0.059	-0.029	0.007	0.011	0.000000	0.000000	-1807.08	175.06
3	GUIDE	1144131688	6.77	14237	0.095	0.056	0.044	0.071	264.942474	-54.356438	-2183.84	-1119.22
4	GUIDE	1144143432	8.27	14233	-0.108	-0.099	0.066	0.107	264.820407	-53.209617	838.77	1704.33
5	GUIDE	1144660608	8.32	14238	0.084	0.060	0.055	0.089	265.130202	-54.477870	-2272.77	-1700.37
6	GUIDE	1144141280	9.04	14234	-0.043	0.044	0.075	0.122	266.126585	-53.720949	1168.45	-1629.53
7	GUIDE	1144130096	8.95	14228	-0.029	-0.059	0.070	0.114	265.098929	-52.802658	2354.42	2167.78

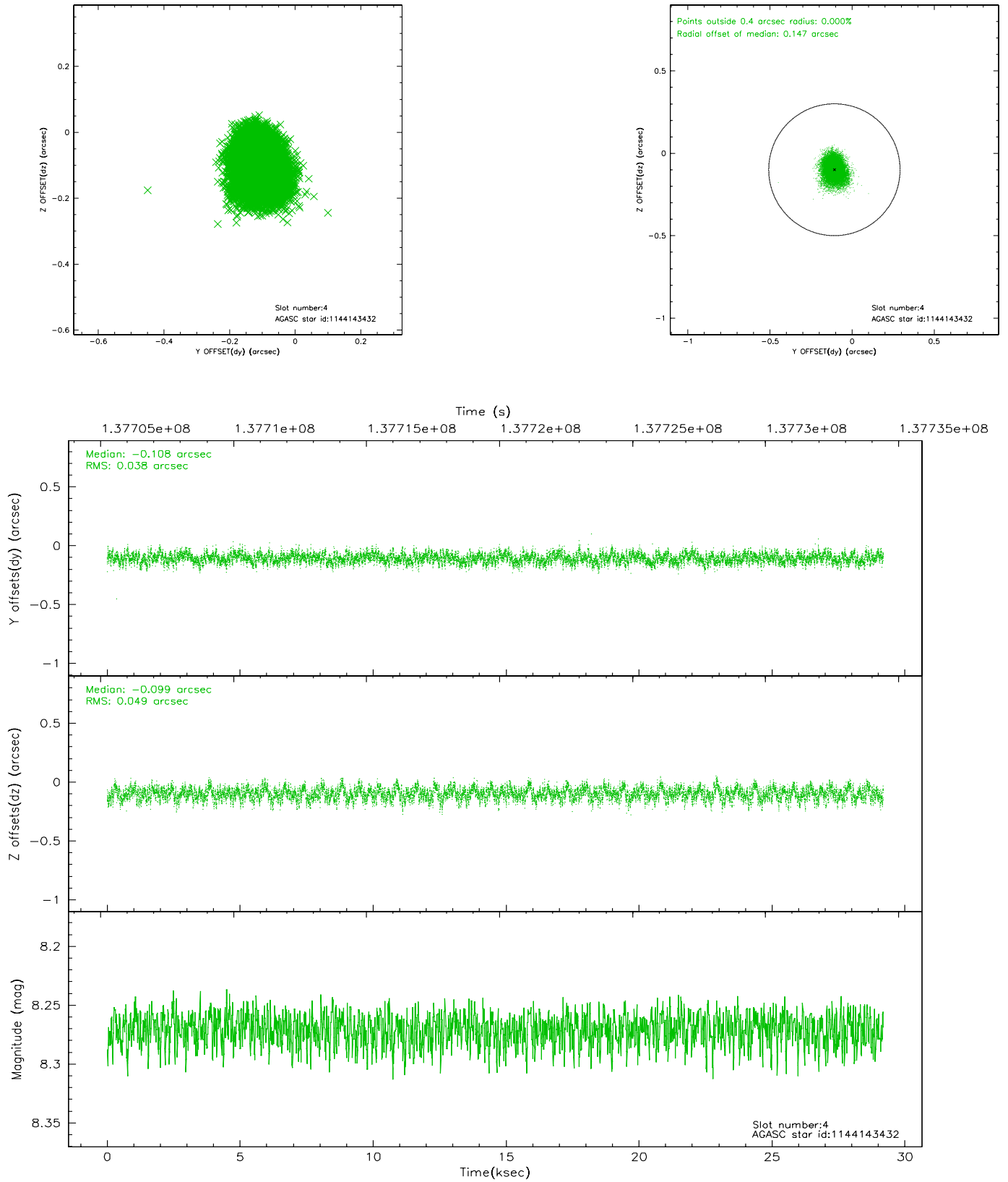


## 2.4 Star Slots

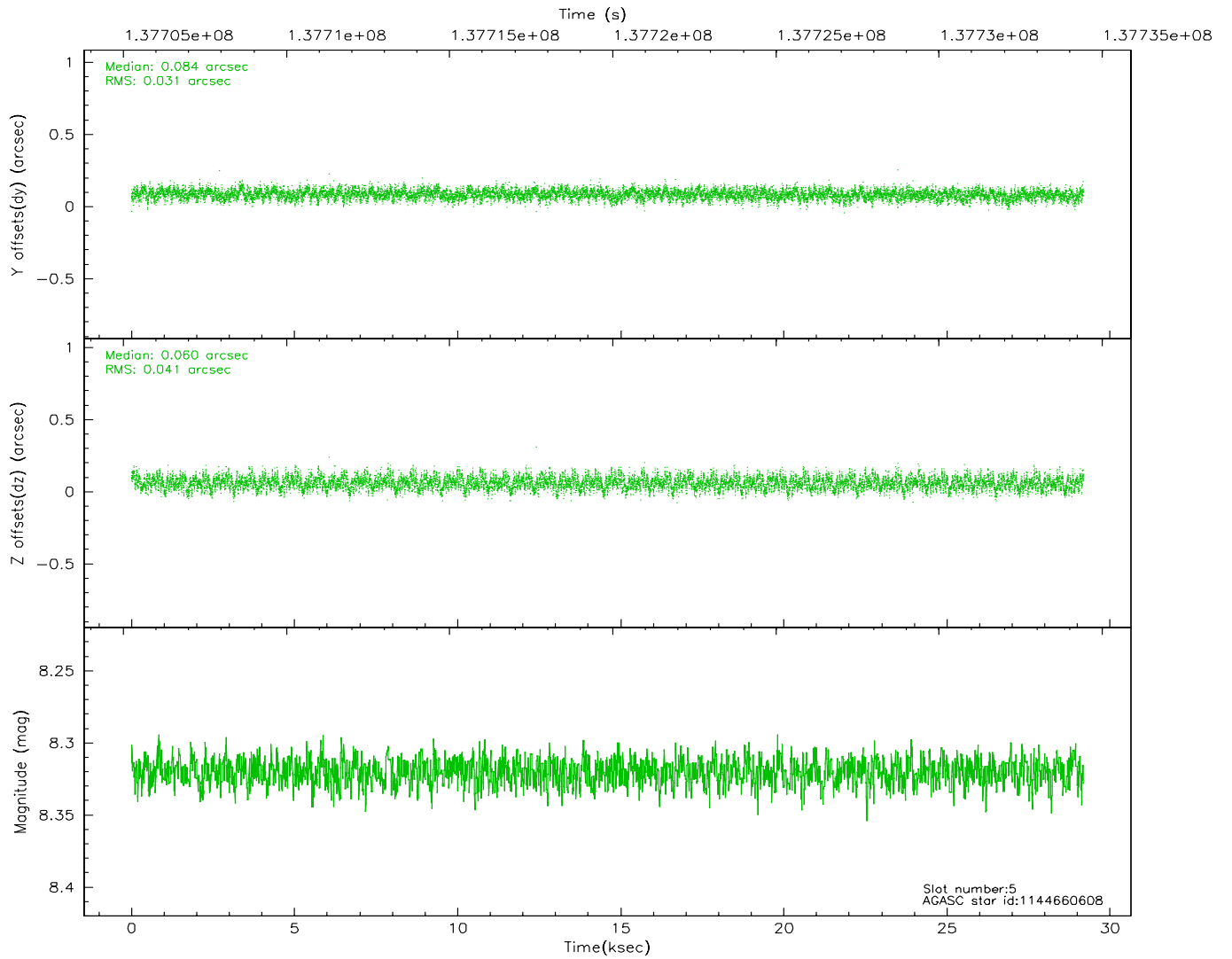
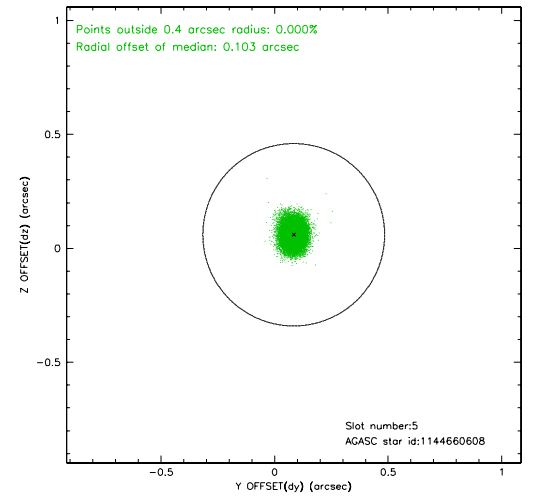
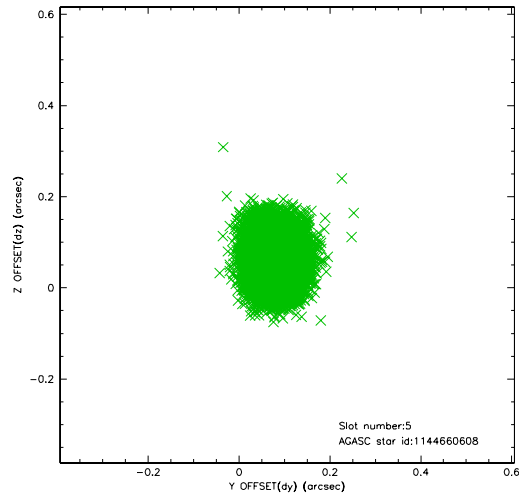
### 2.4.1 Slot 3



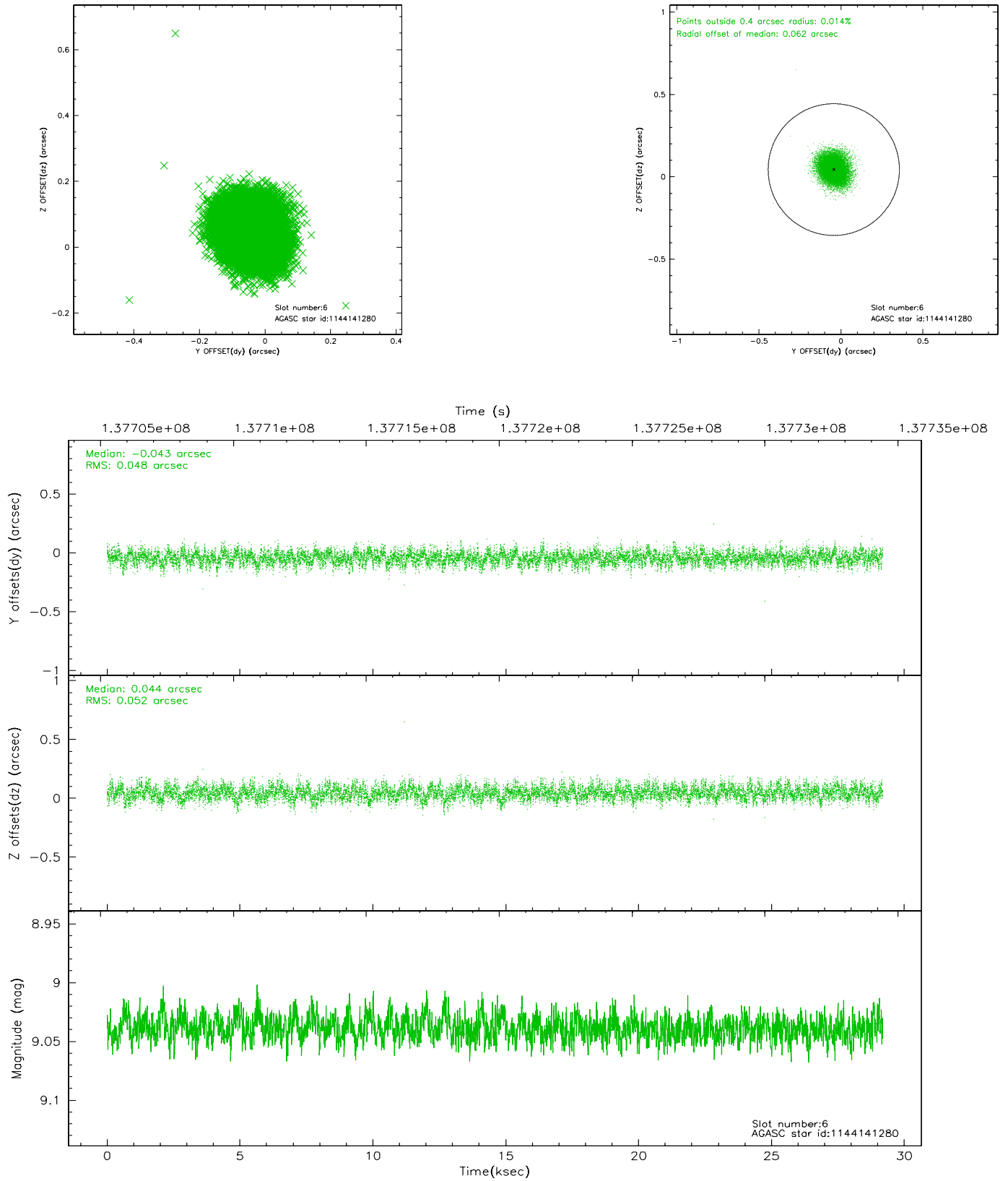
## 2.4.2 Slot 4



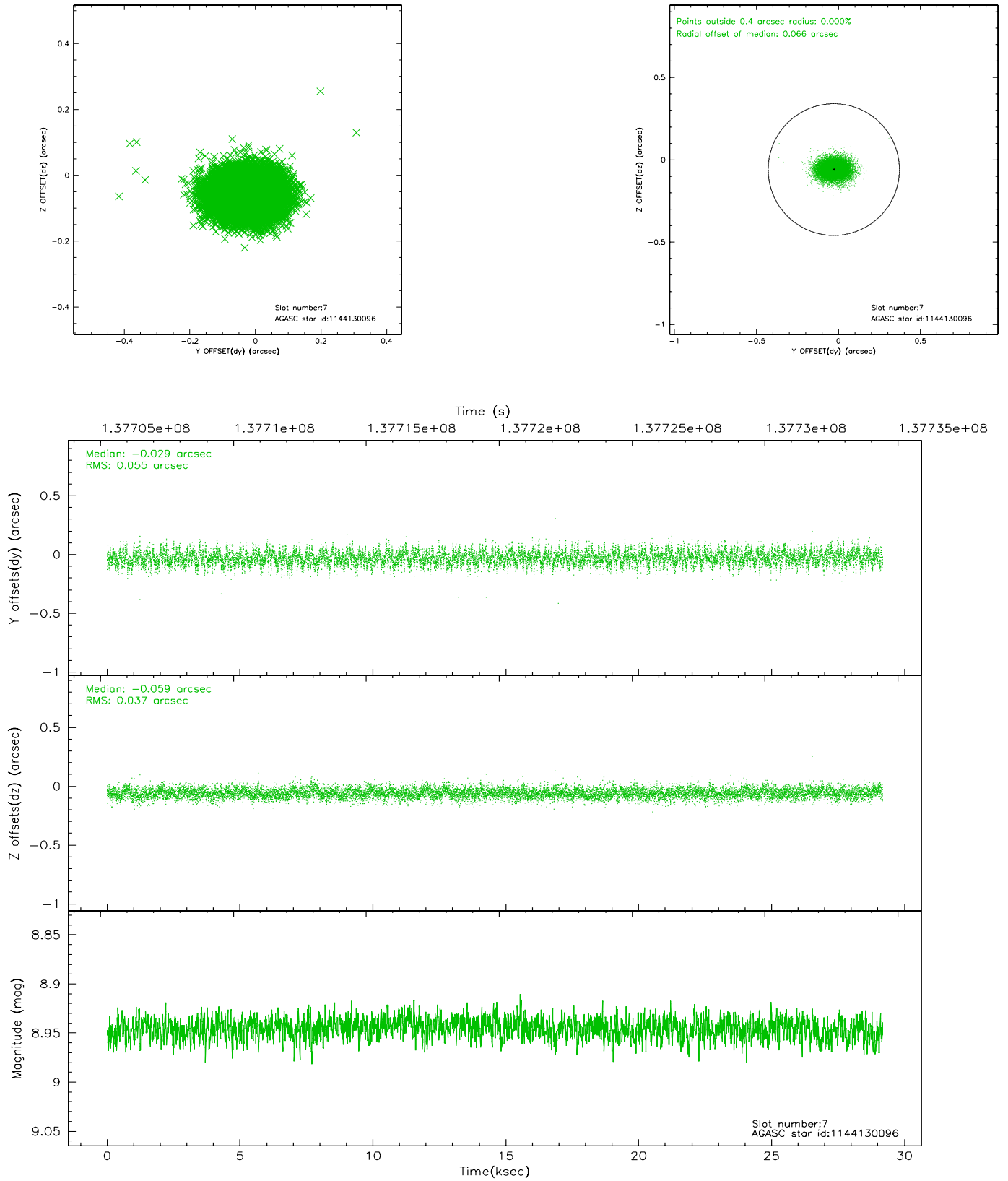
### 2.4.3 Slot 5



## 2.4.4 Slot 6

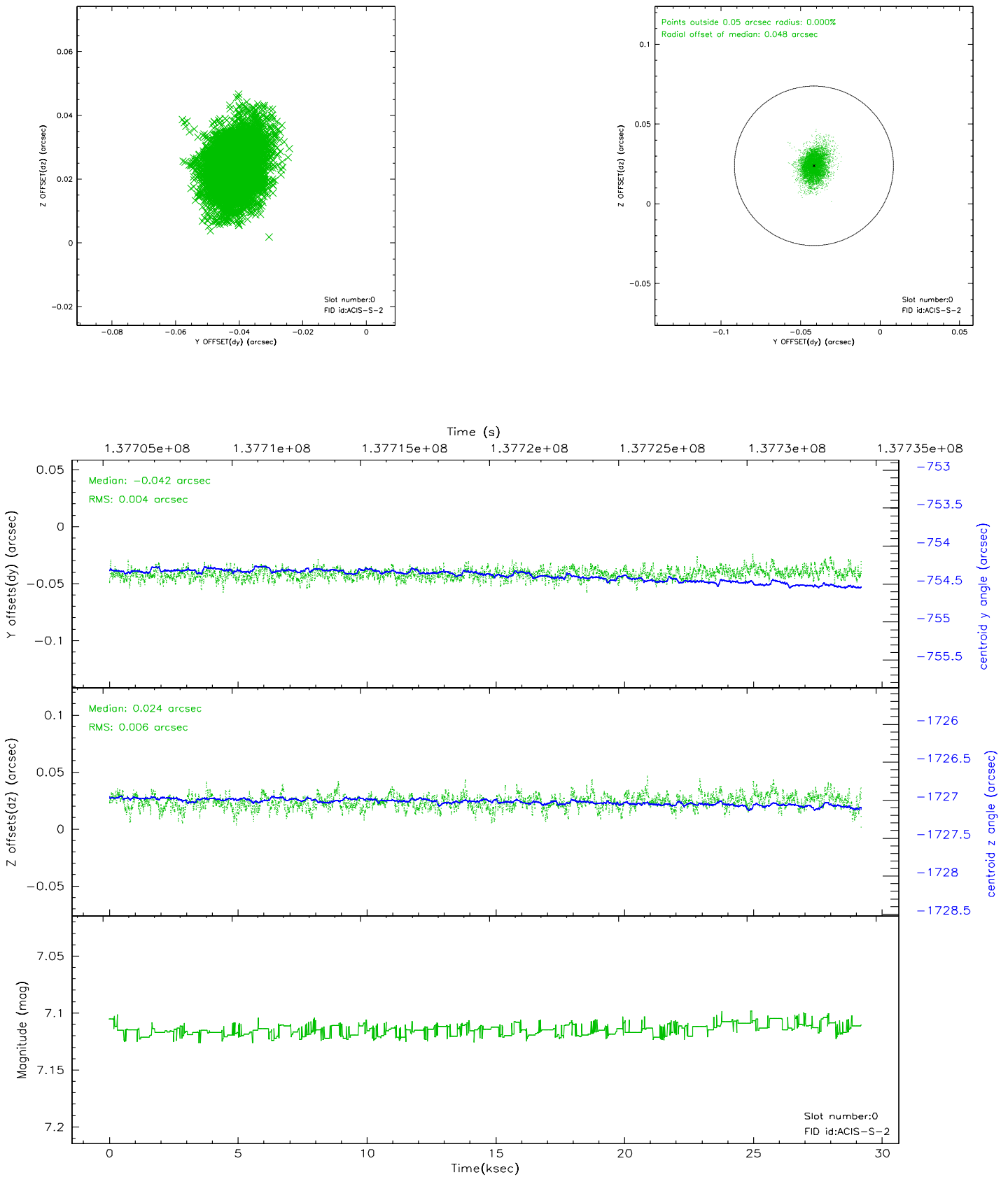


## 2.4.5 Slot 7

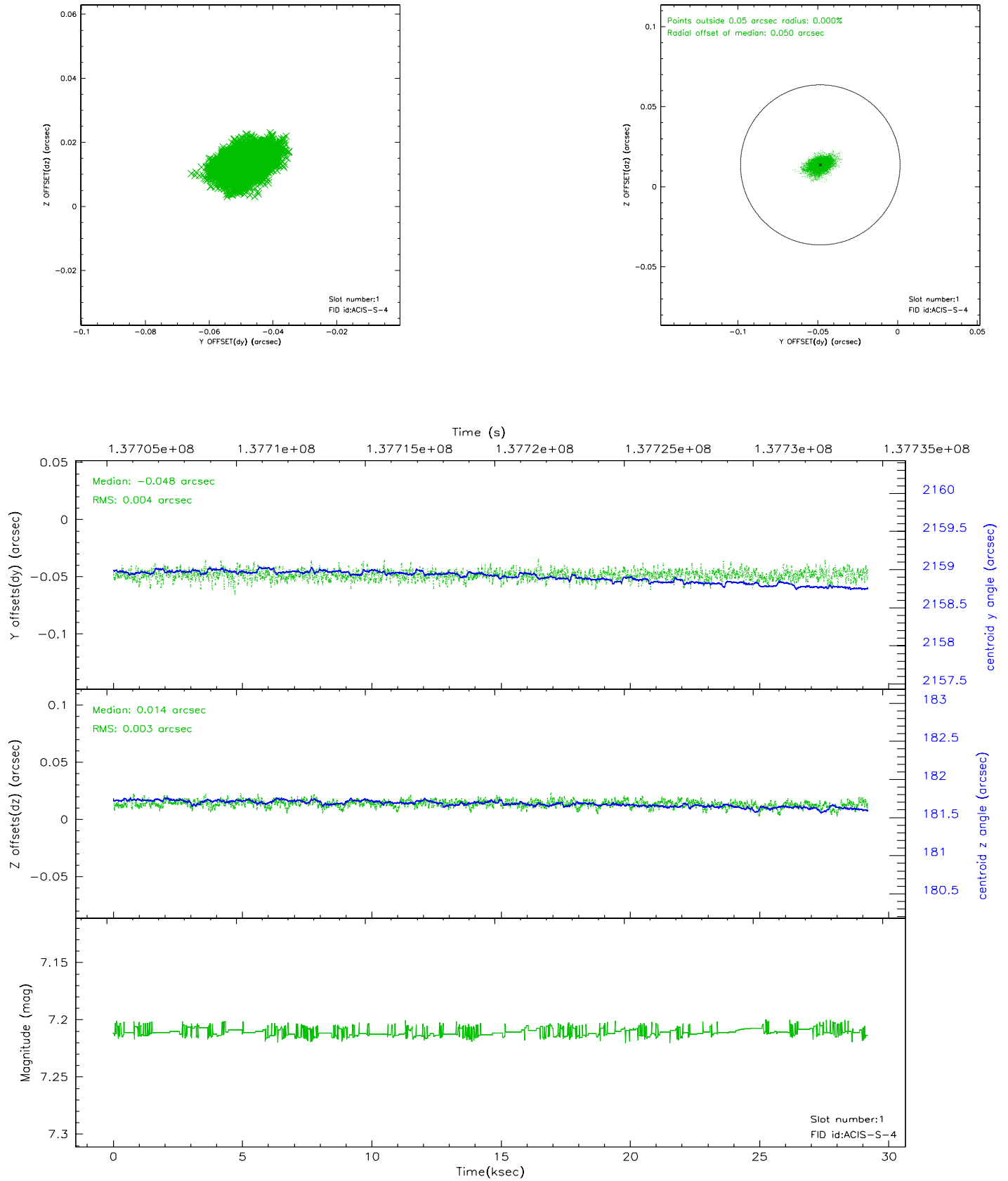


## 2.5 FID Slots

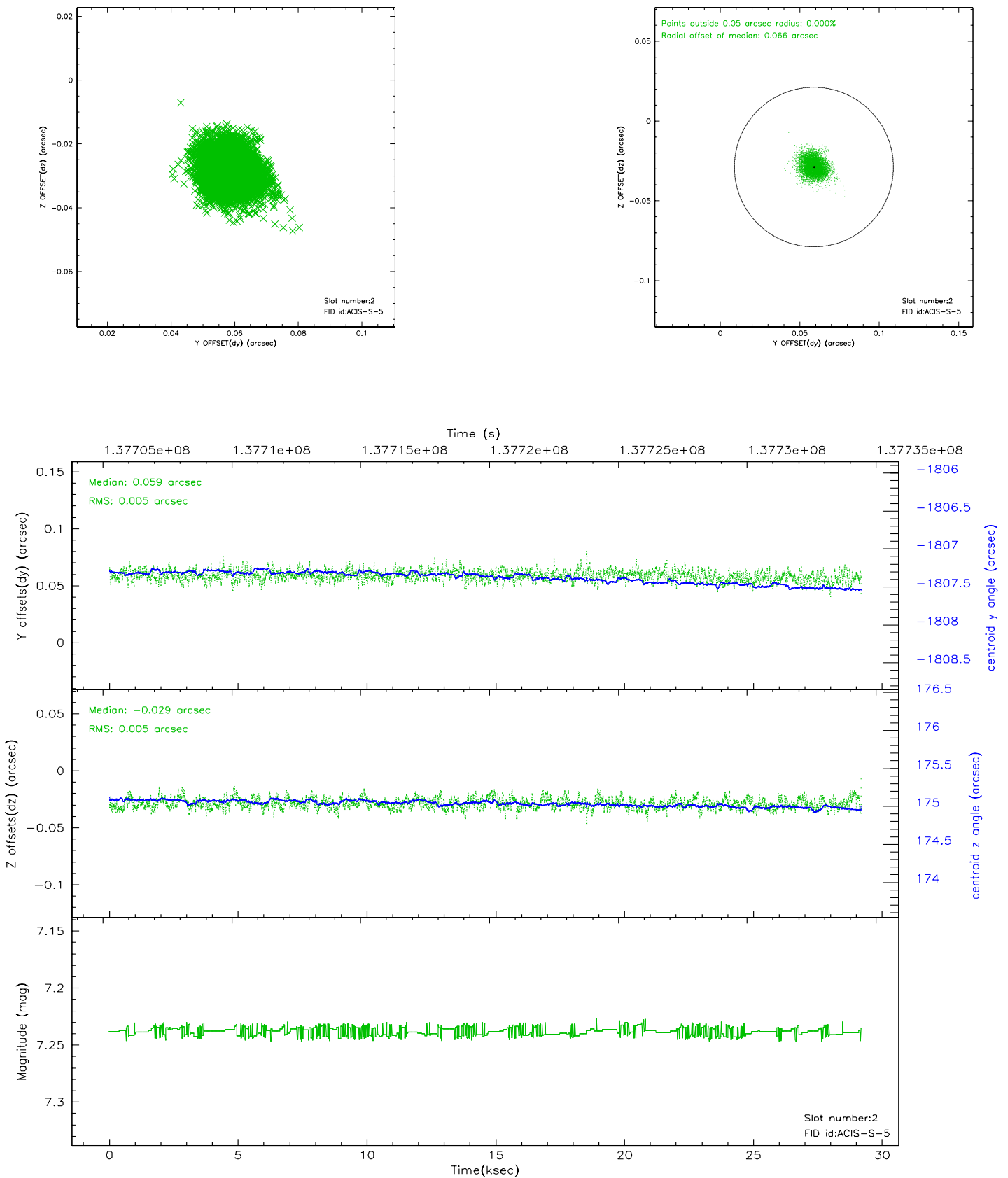
### 2.5.1 Slot 0



## 2.5.2 Slot 1

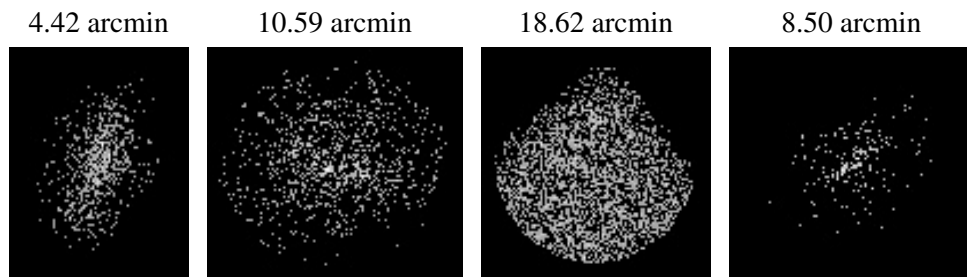


### 2.5.3 Slot 2





### 3 Point Sources



## A Summary

### A.1 Status

V&V Scientist	Jen Lauer
V&V Date (YYYY-MM-DD)	2006.09.18
V&V Edition	1
V&V Disposition and Status	OK
V&V Charge Time	28.463

### A.2 Comments