

V&V Reference Report

L2 ASCDS Version : 7.6.9

Observation 2580 - L2 Version 001
Chandra X-Ray Center

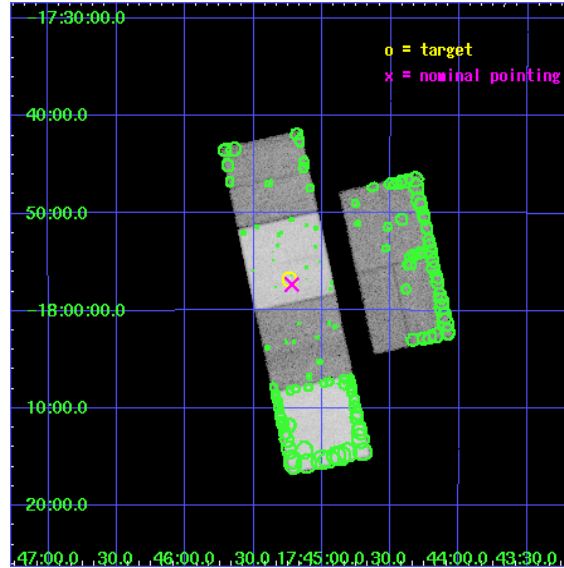
L2 Processing Date : Sep 22 2006

Contents

1	Front	2
2	OBI	3
2.1	OBI	3
2.1.1	Images	3
2.1.2	Bias	3
2.1.3	Parameters	4
2.1.4	Events	4
2.2	Compared Parameters	5
2.3	Aspect	6
2.4	Star Slots	9
2.4.1	Slot 3	9
2.4.2	Slot 4	10
2.4.3	Slot 5	11
2.4.4	Slot 6	12
2.4.5	Slot 7	13
2.5	FID Slots	14
2.5.1	Slot 0	14
2.5.2	Slot 1	15
2.5.3	Slot 2	16
3	Point Sources	17
A	Summary	18
A.1	Status	18
A.2	Comments	18

1 Front

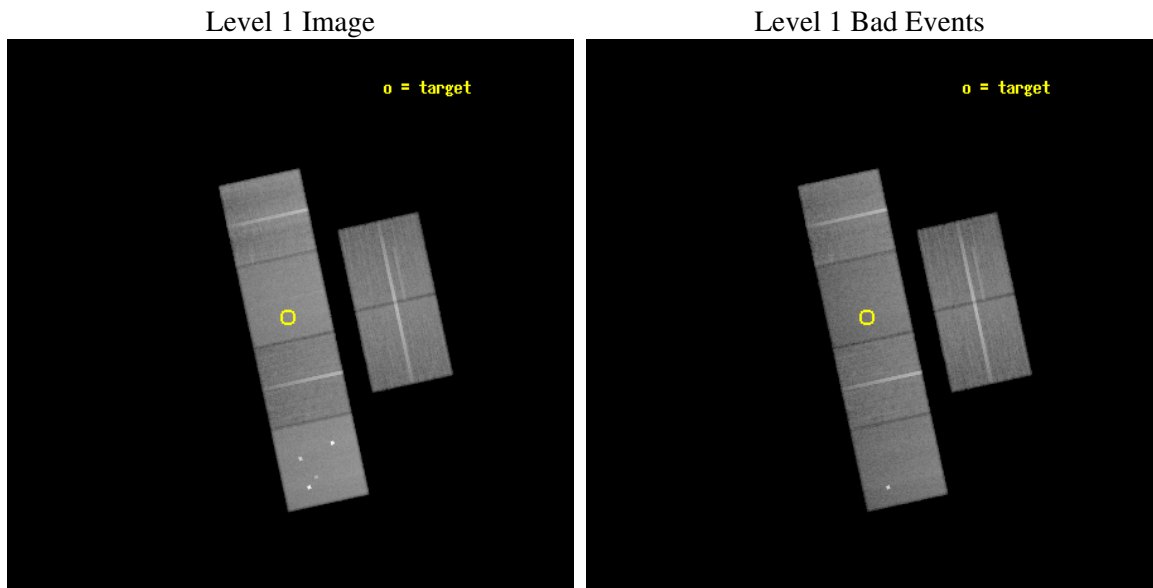
seq_num	200188
obs_id	2580
title	PROBING WIND-WIND INTERACTIONS AND STELLAR MAGNETIC FIELDS IN PRE-PLANETARY NEBULAE
observer	Dr. Raghvendra Sahai
object	HEN3-1475
dtcycle	0
cycle	P
ra_targ	266.309167
dec_targ	-17.946389
ra_nom	266.3052840537
dec_nom	-17.955349608377
roll_nom	257.74980208024
revision	2
ontime	47958.399821341
livetime	47351.121685722
ontime2	47958.399821341
ontime3	47958.399821341
ontime5	47955.158870965
ontime6	47958.399821341
ontime7	47958.399821341
ontime8	47955.158851057
l2events	514624



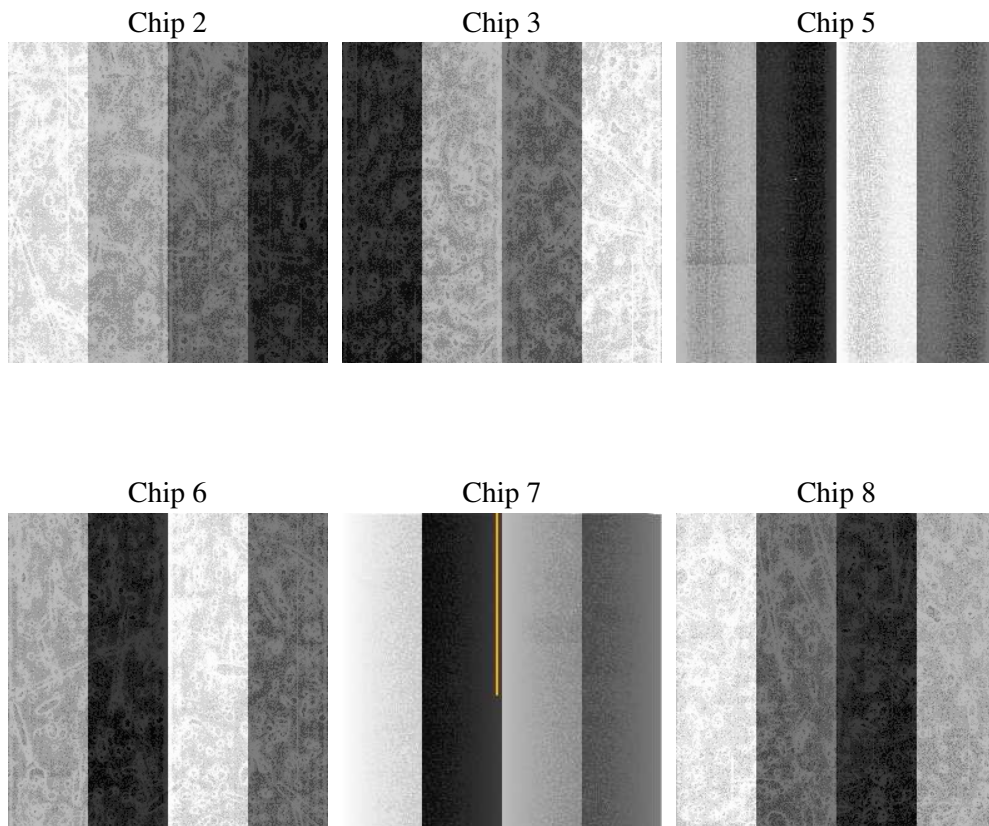
2 OBI

2.1 OBI

2.1.1 Images



2.1.2 Bias



2.1.3 Parameters

obi_num	0
ascdsver	7.6.9
caldsver	3.2.3
date	2006-09-23T00:32:42
revision	2

sched_exp_time	48000.000000
ontime	47963.658840239
ontime2	47963.658840239
ontime3	47963.658840239
ontime5	47960.417889863
ontime6	47963.658840239
ontime7	47963.658840239
ontime8	47960.417869955
l1events	2296960

2.1.4 Events

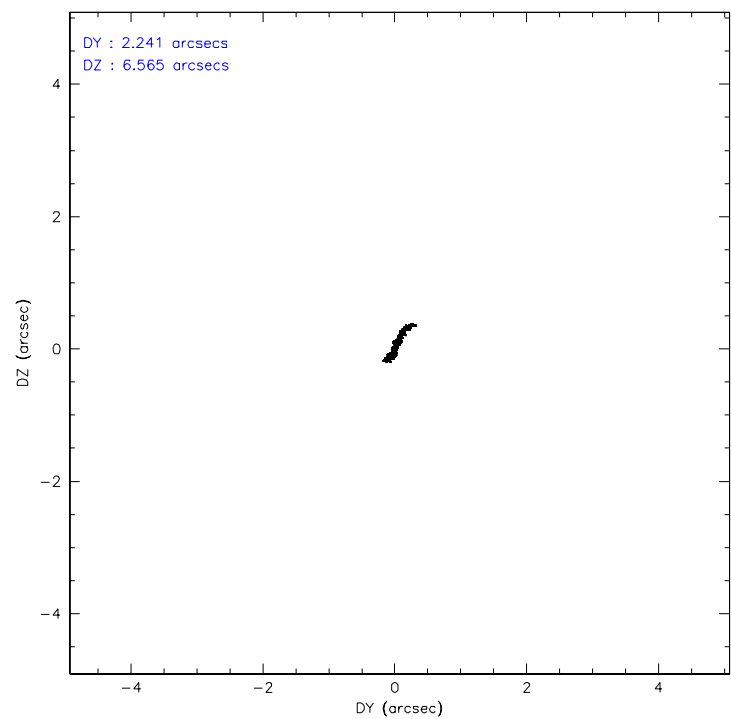
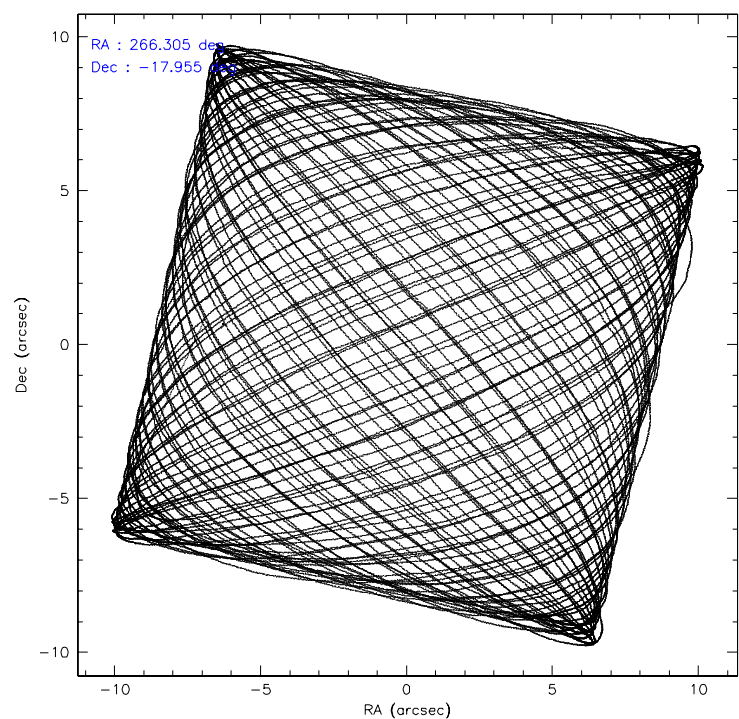
	ccd 2	ccd 3	ccd 5	ccd 6	ccd 7	ccd 8
level 1 events	330310	316217	486964	330860	428358	404251
rejected events	288705	274930	262010	286735	258103	315757
rejected %	87%	86%	53%	86%	60%	78%

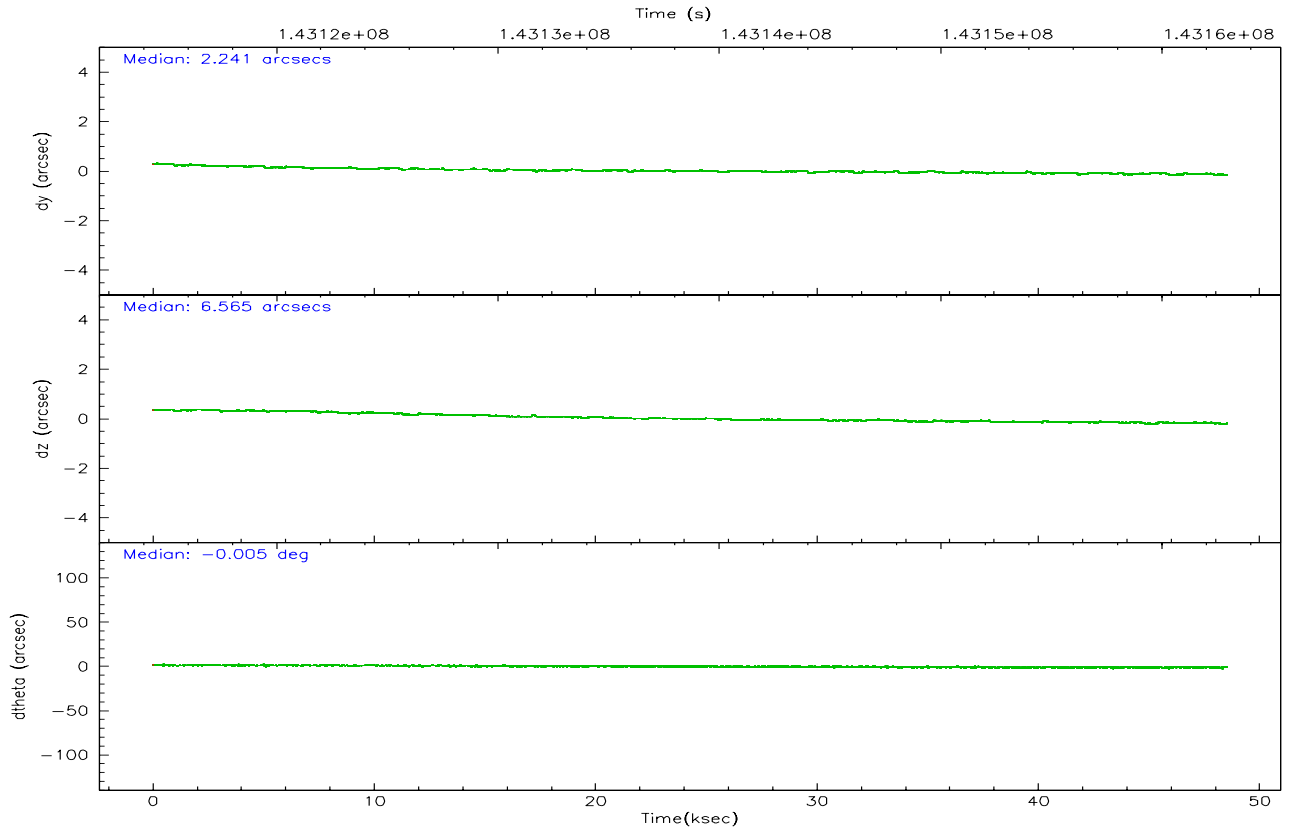
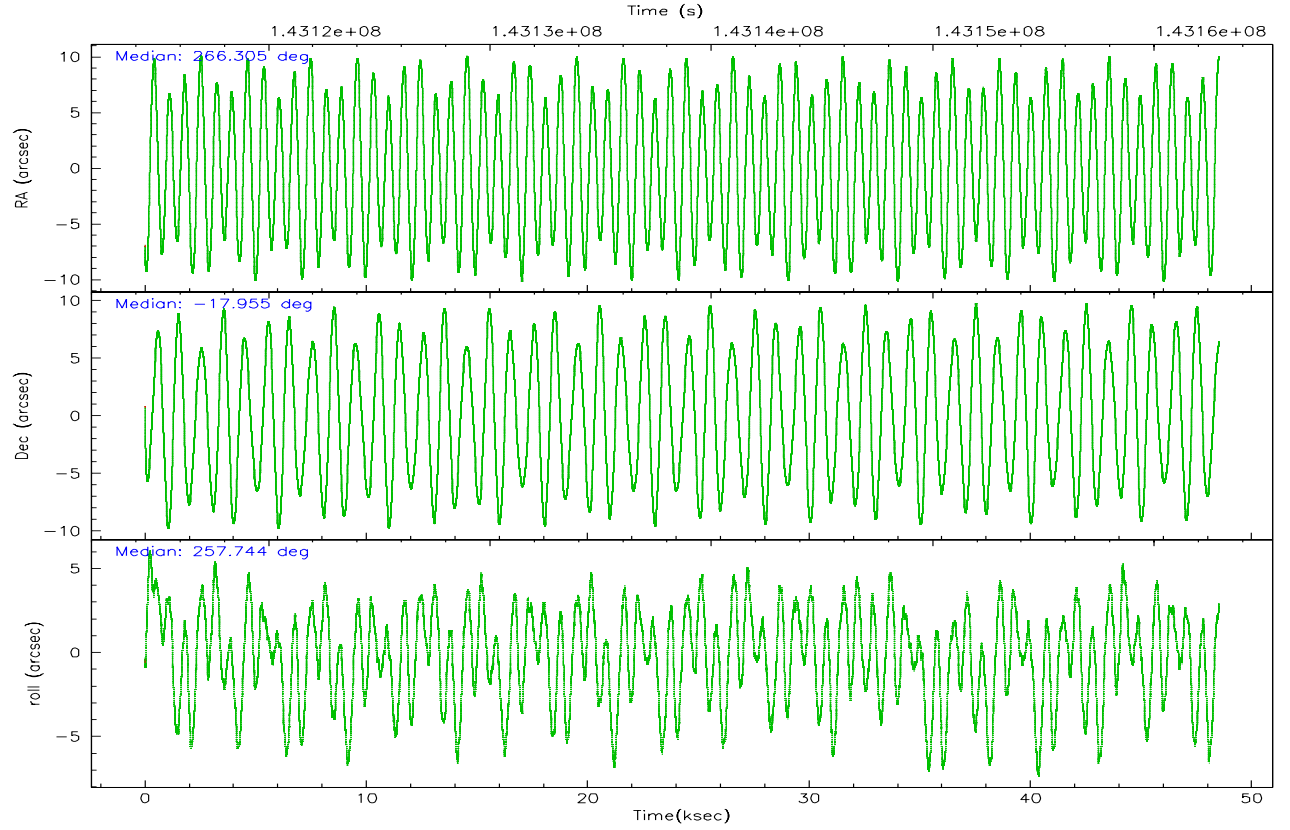
	ccd 2	ccd 3	ccd 5	ccd 6	ccd 7	ccd 8
grade 0 events	18430	18958	28537	19304	12450	29463
	5%	5%	5%	5%	2%	7%
grade 1 events	175	145	370	154	221	251
	0%	0%	0%	0%	0%	0%
grade 2 events	8677	7823	70140	8368	42469	19096
	2%	2%	14%	2%	9%	4%
grade 3 events	3548	3731	5087	3951	9646	8949
	1%	1%	1%	1%	2%	2%
grade 4 events	3614	3543	4712	3922	9258	8290
	1%	1%	0%	1%	2%	2%
grade 5 events	11349	12848	22335	13635	28375	17628
	3%	4%	4%	4%	6%	4%
grade 6 events	7338	7235	116495	8584	96438	22698
	2%	2%	23%	2%	22%	5%
grade 7 events	277179	261934	239288	272942	229501	297876
	83%	82%	49%	82%	53%	73%

2.2 Compared Parameters

Parameter	Planned	Actual	Parameter	Planned	Actual
Instrument	ACIS	ACIS	Obspar format version number	6	6
Detector	ACIS-235678	ACIS-235678	Obspar file type	PREDICTED	ACTUAL
Grating	NONE	NONE	Obspar update status	NONE	UPDATED
Data mode	FAINT	FAINT	Number of optional ACIS chips dropped	0	0
Observation mode	POINTING	POINTING	On-chip summing requested	N	N
Pointing RA	266.296205	266.3052840537018	Subarray requested	NONE	NONE
Pointing Dec	-17.929516	-17.95534960837714	Alternating exposures requested	N	N
Pointing Roll	257.590373	257.7498020802394	Primary exposure time	0.000000	3.2
SIM focus pos (mm)	-0.684267	-0.6828225247311905			
SIM defocus (mm)	0	0.001444936568705701			
SIM translation stage pos (mm)	-190.132523	-190.1400660498719			
SIM translation stage offset (mm)	0	0.00754346686406393			
Observation start time	143114947.184000	143113814.92256			
Observation start date	2002-07-15T10:08:03	2002-07-15T09:50:14			
Observation end time	143162947.184000	143163501.7996			
Observation end date	2002-07-15T23:28:03	2002-07-15T23:38:21			
Read mode	TIMED	TIMED			

2.3 Aspect



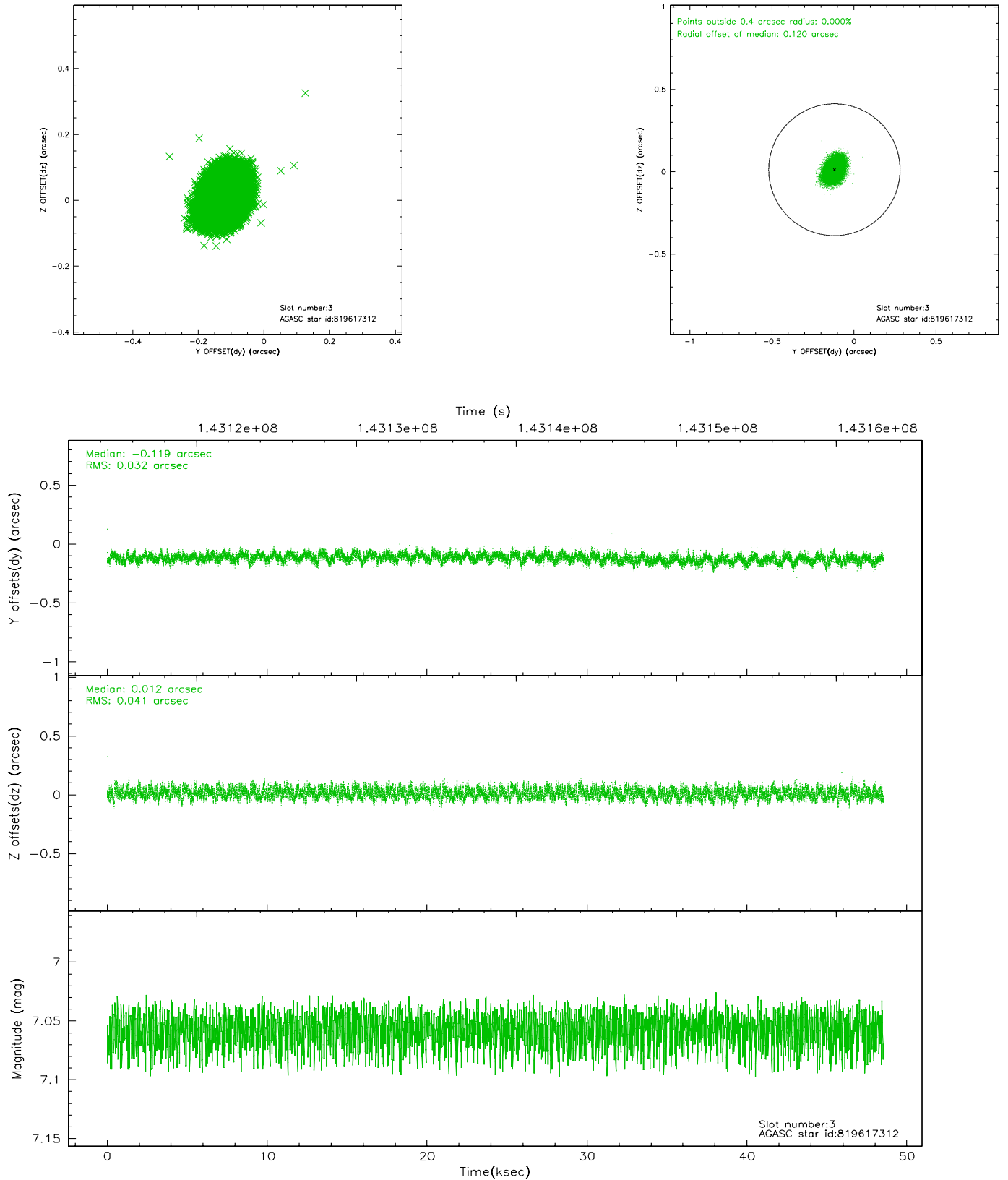


Slot Statistics

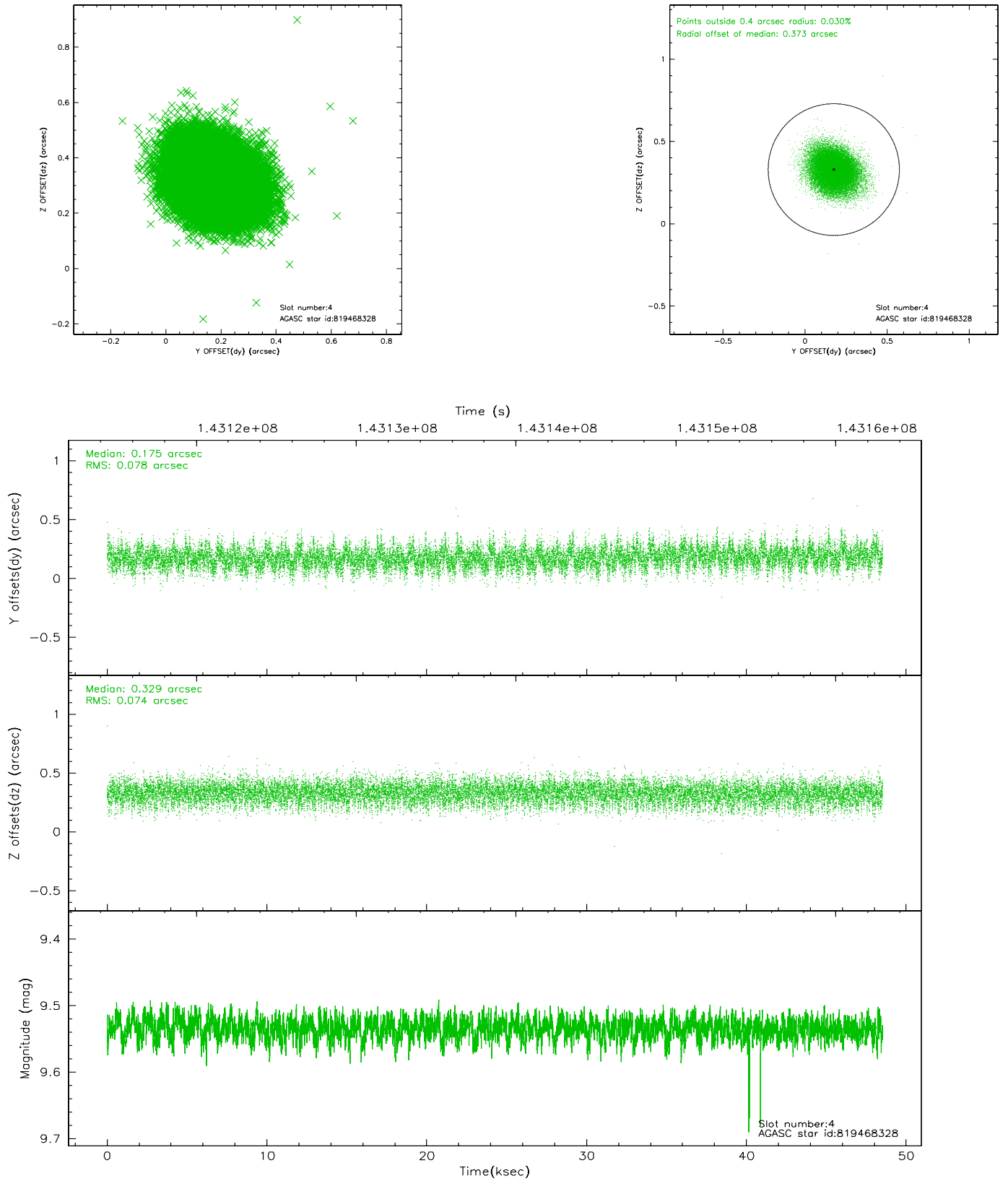
slot	status	id	mag	n_pts	med_dy	med_dz	dr1	dr2	ra	dec	mean_y	mean_z
0	FID	ACIS-S-2	7.12	11837	-0.024	0.030	0.016	0.025	0.000000	0.000000	-754.89	-1727.75
1	FID	ACIS-S-4	7.20	11834	-0.068	0.003	0.024	0.037	0.000000	0.000000	2158.34	180.76
2	FID	ACIS-S-5	7.24	11835	0.055	-0.024	0.011	0.017	0.000000	0.000000	-1807.69	174.34
3	GUIDE	819617312	7.06	23673	-0.119	0.012	0.056	0.090	266.069958	-17.436832	-1564.41	-1139.55
4	GUIDE	819468328	9.53	23654	0.175	0.329	0.115	0.187	265.649242	-18.454758	2325.99	-1749.52
5	GUIDE	819596600	9.65	23657	0.346	-0.564	0.105	0.175	266.437215	-18.535096	2026.67	938.78
6	GUIDE	819609896	9.30	23662	-0.339	0.203	0.091	0.149	266.730766	-18.162294	500.70	1633.14
7	GUIDE	819618016	9.05	23659	-0.060	0.017	0.086	0.133	266.002087	-17.516400	-1234.24	-1305.04

2.4 Star Slots

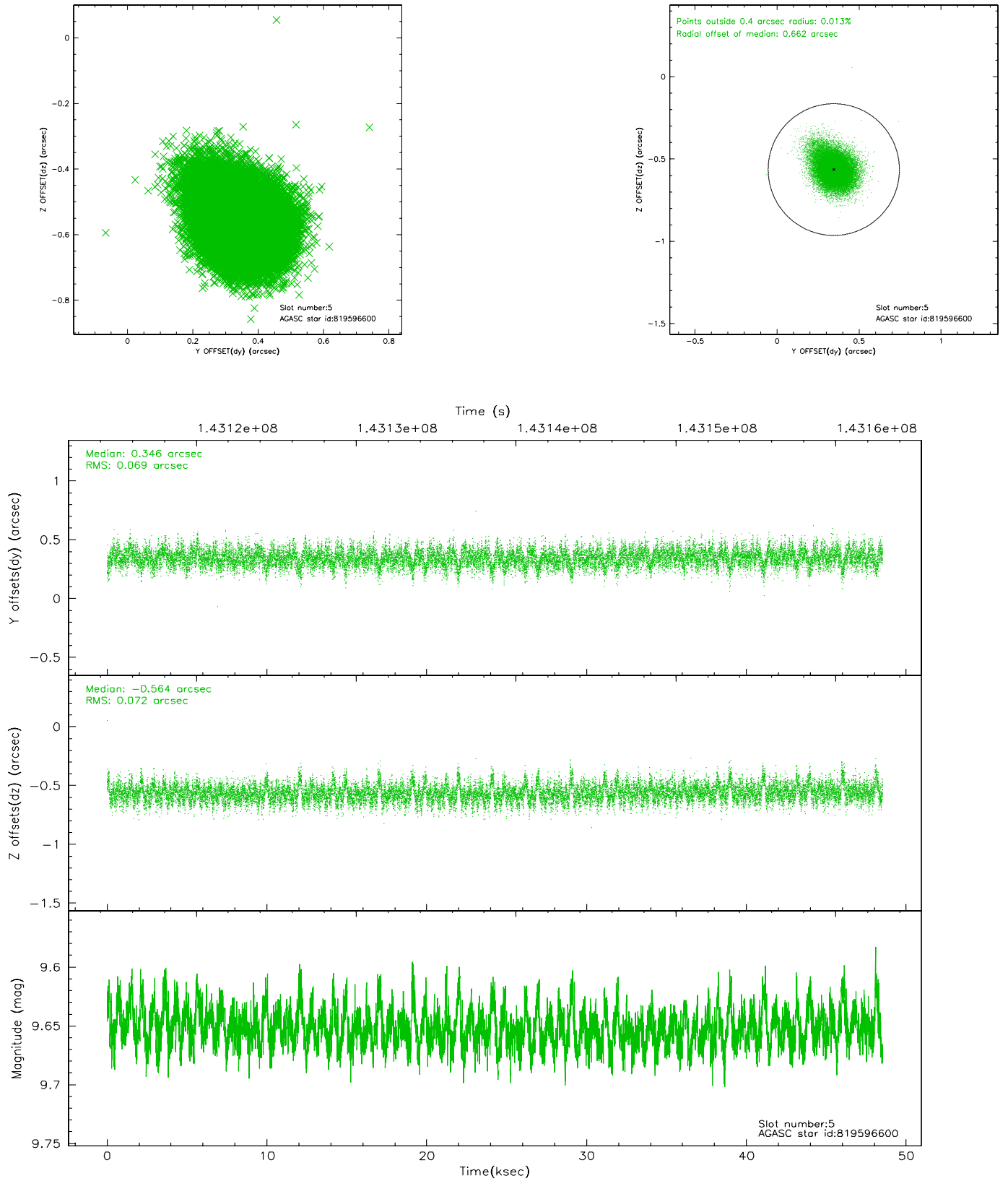
2.4.1 Slot 3



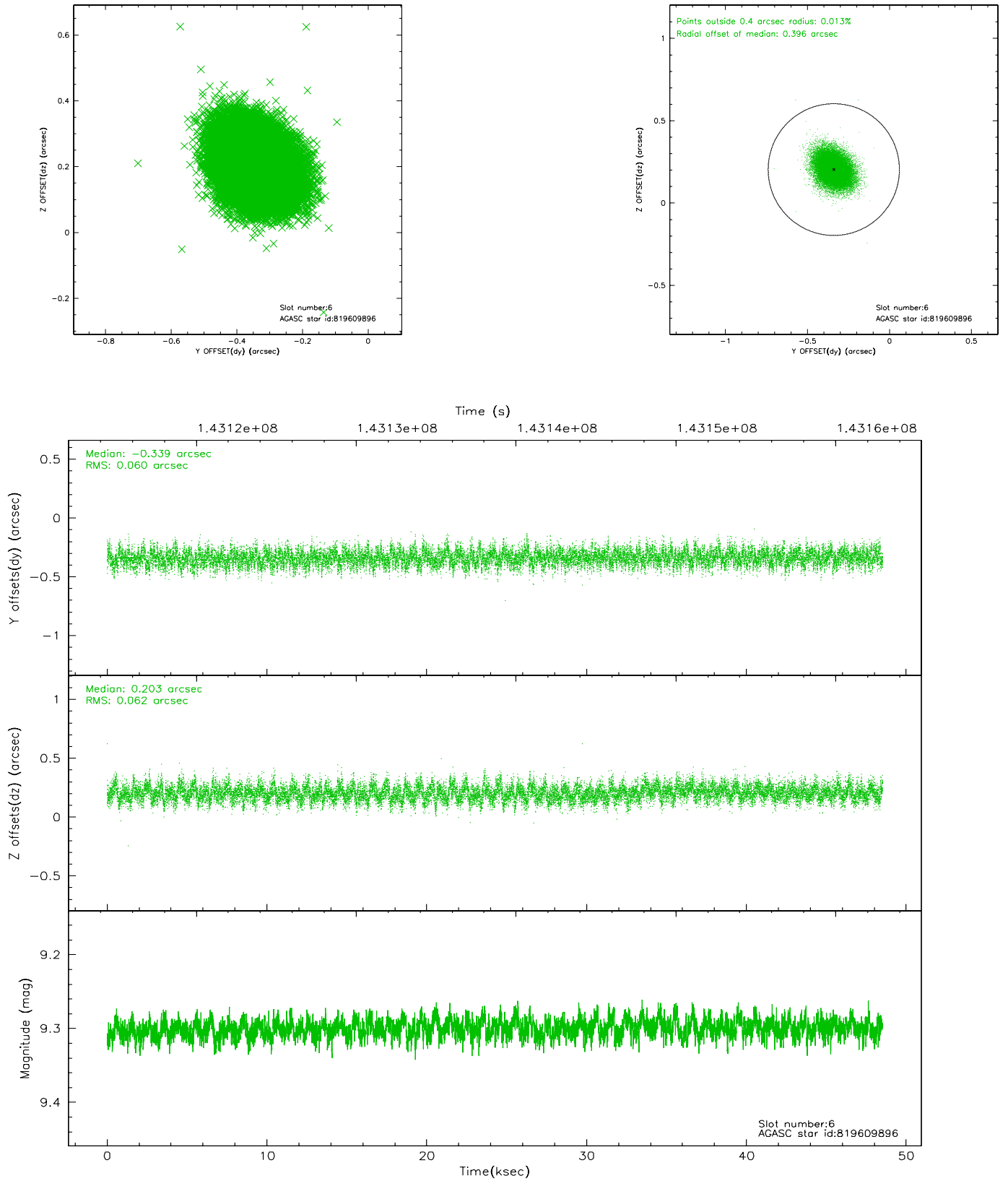
2.4.2 Slot 4



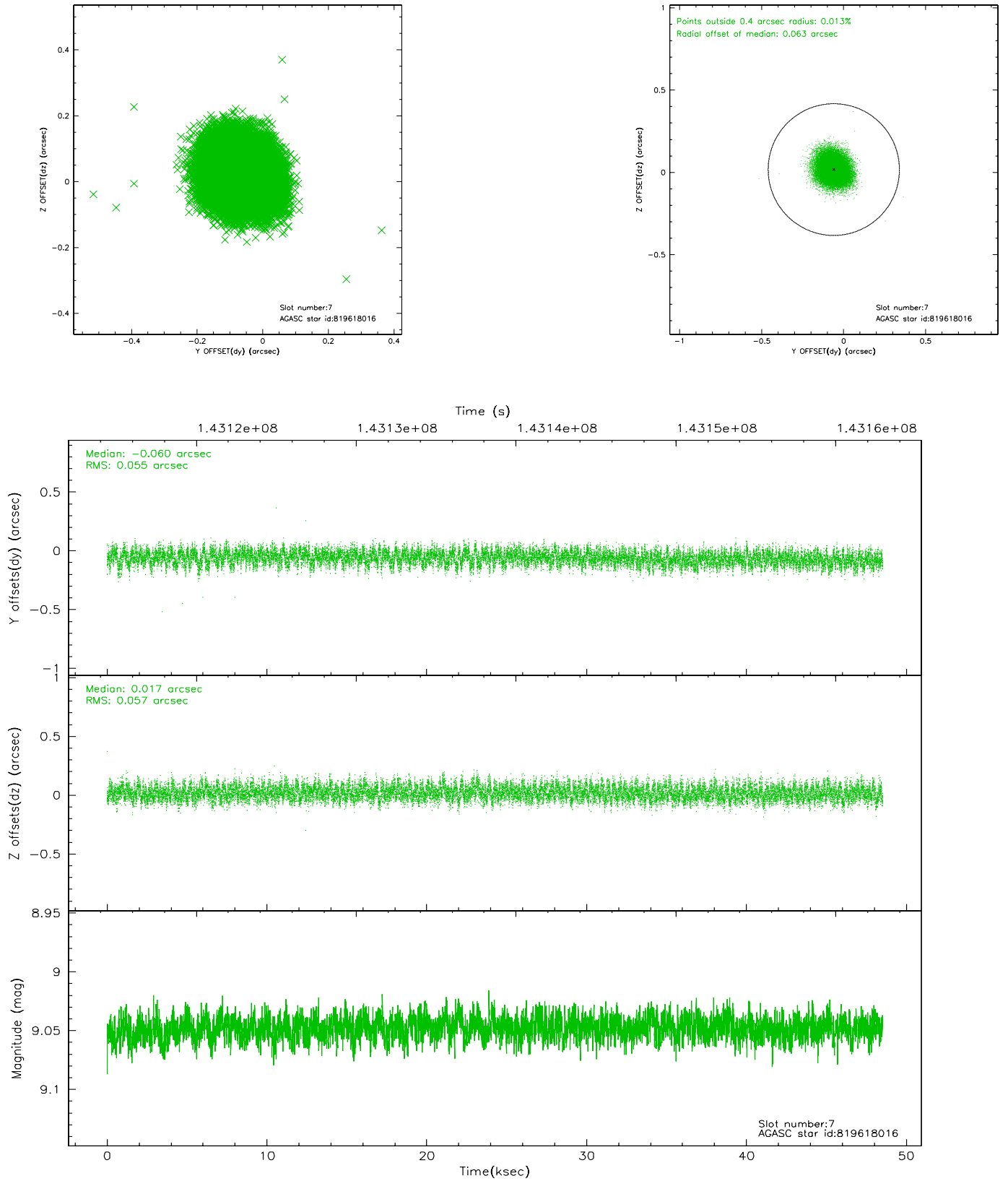
2.4.3 Slot 5



2.4.4 Slot 6

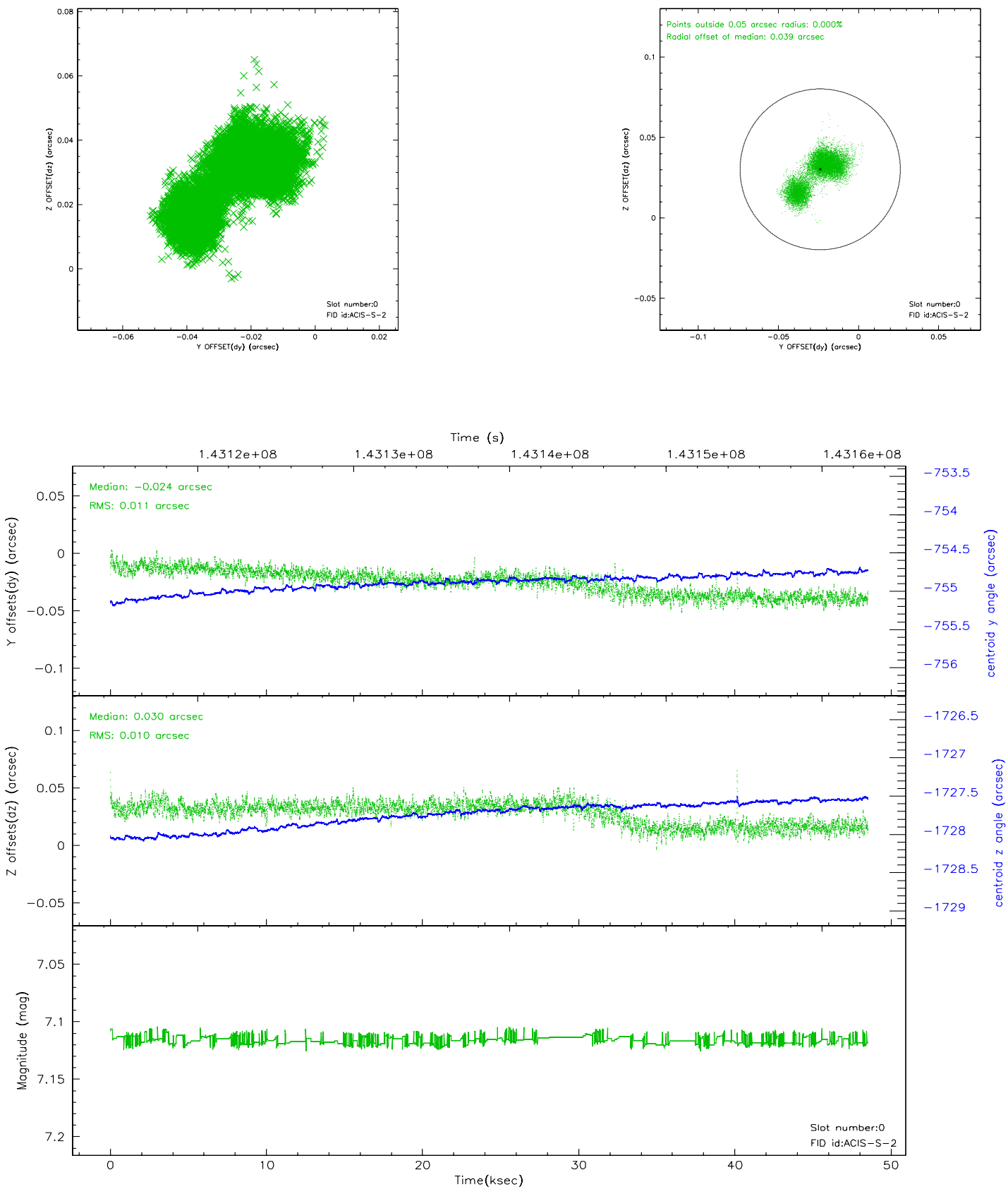


2.4.5 Slot 7

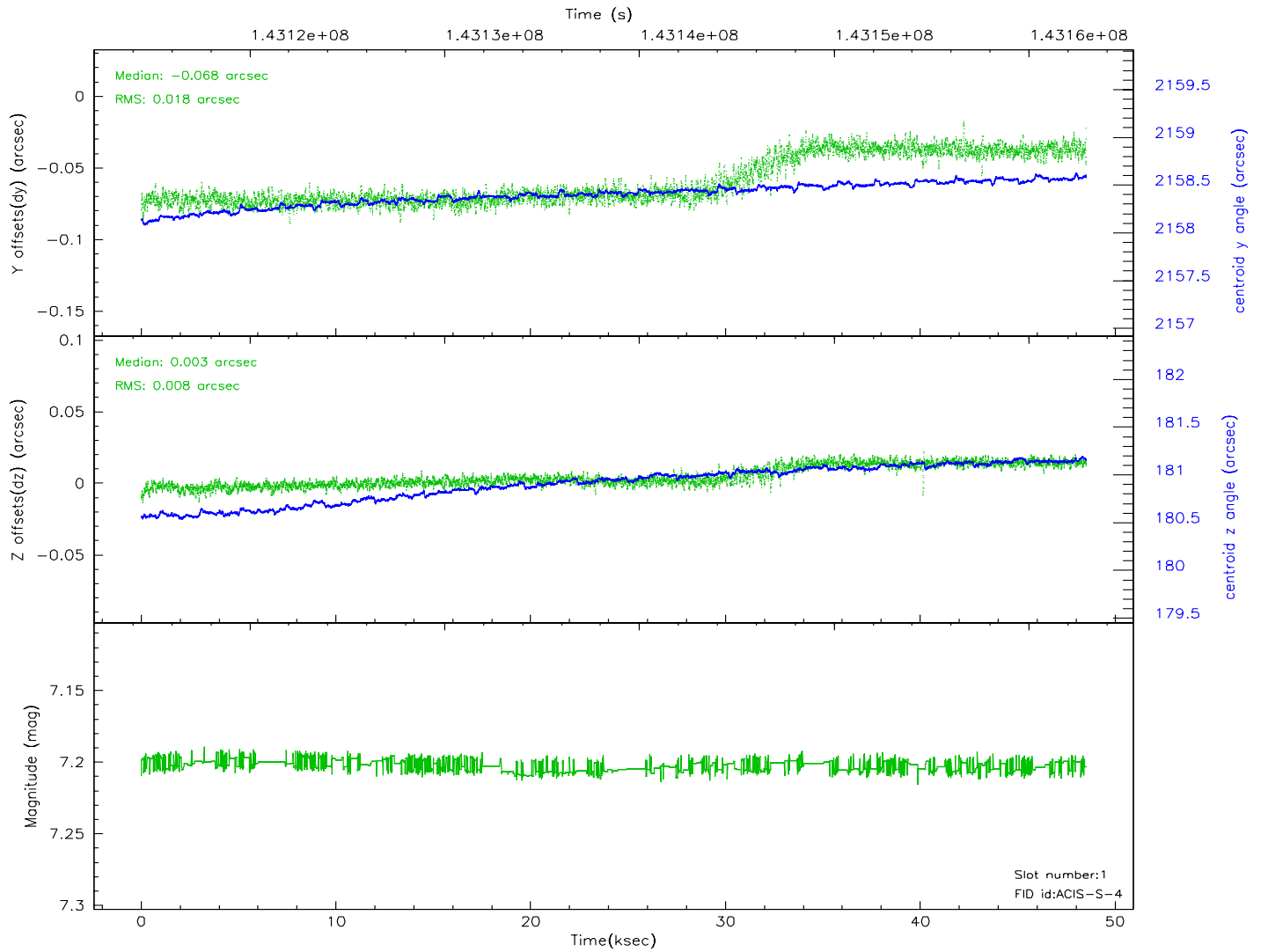
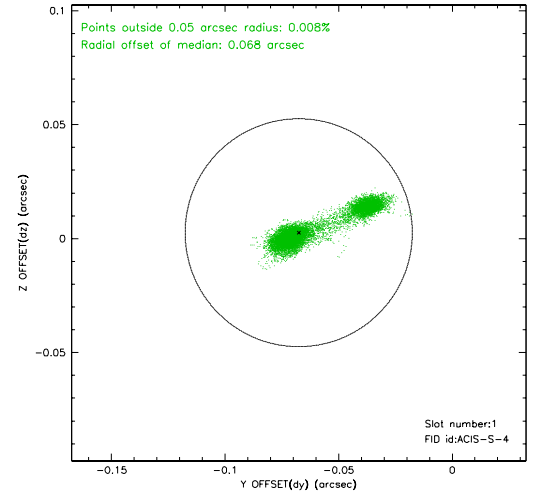
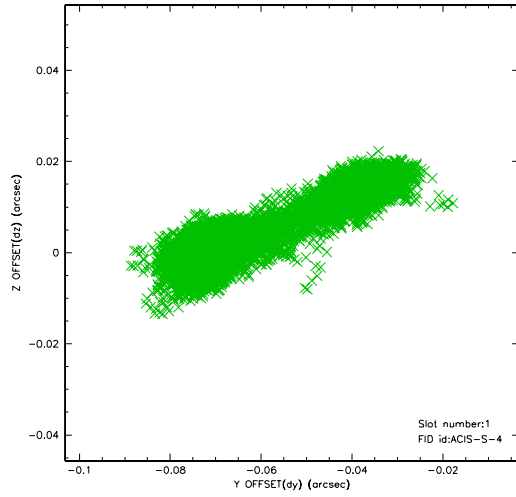


2.5 FID Slots

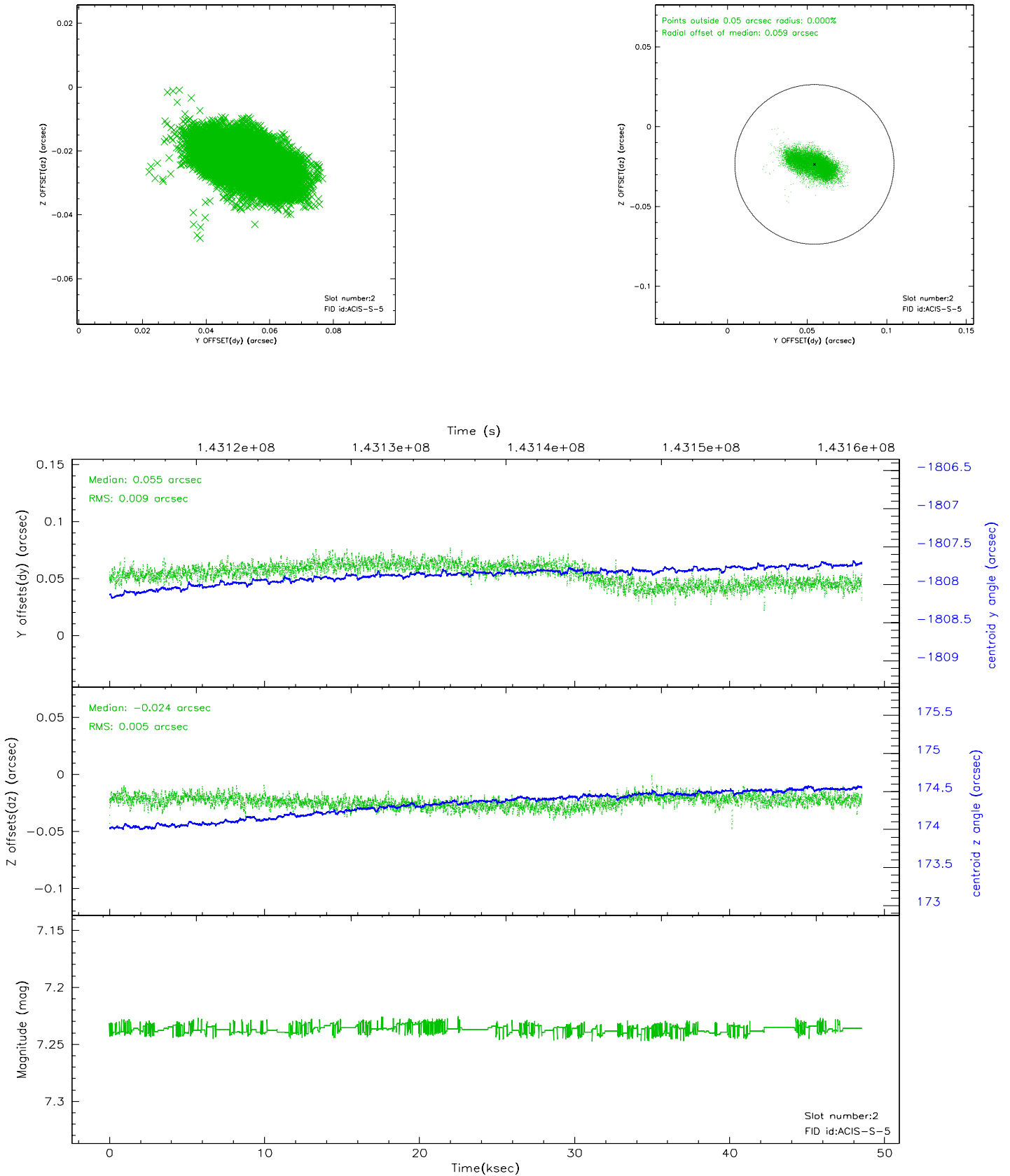
2.5.1 Slot 0



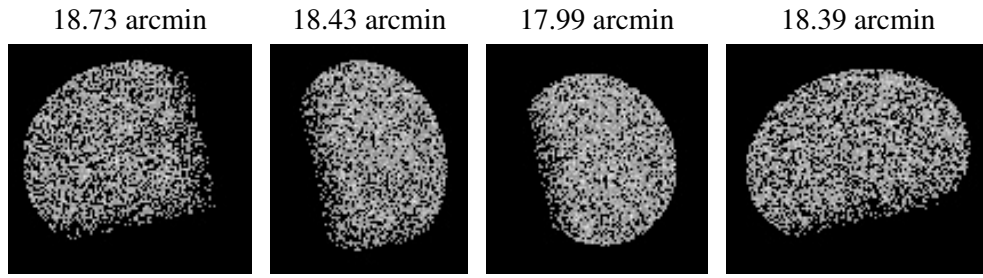
2.5.2 Slot 1



2.5.3 Slot 2



3 Point Sources



A Summary

A.1 Status

V&V Scientist	Beth Sundheim
V&V Date (YYYY-MM-DD)	2006.09.25
V&V Edition	1
V&V Disposition and Status	OK
V&V Charge Time	47.958

A.2 Comments