

V&V Reference Report

L2 ASCDS Version : 7.6.8.1

Observation 2564 - L2 Version 001
Chandra X-Ray Center

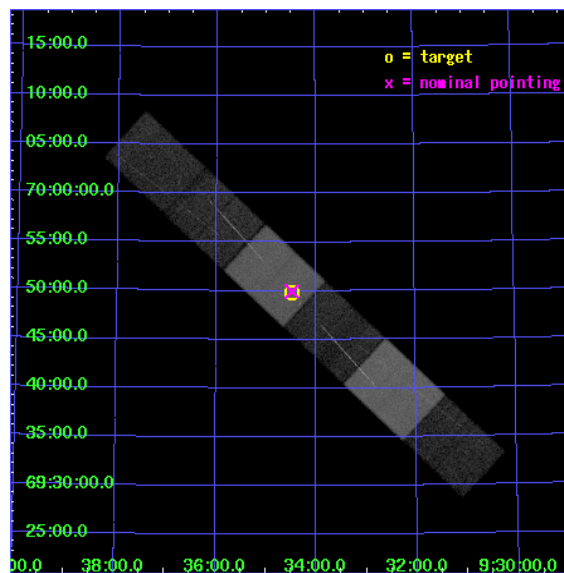
L2 Processing Date : Sep 8 2006

Contents

1	Front	2
2	OBI	3
2.1	OBI	3
2.1.1	Images	3
2.1.2	Bias	3
2.1.3	Parameters	4
2.1.4	Events	4
2.2	Compared Parameters	5
2.3	Aspect	6
2.4	Star Slots	9
2.4.1	Slot 3	9
2.4.2	Slot 4	10
2.4.3	Slot 5	11
2.4.4	Slot 6	12
2.4.5	Slot 7	13
2.5	FID Slots	14
2.5.1	Slot 0	14
2.5.2	Slot 1	15
2.5.3	Slot 2	16
3	Gratings	17
3.1	HEG Arm	17
3.2	MEG Arm	19
A	Summary	21
A.1	Status	21
A.2	Comments	21

1 Front

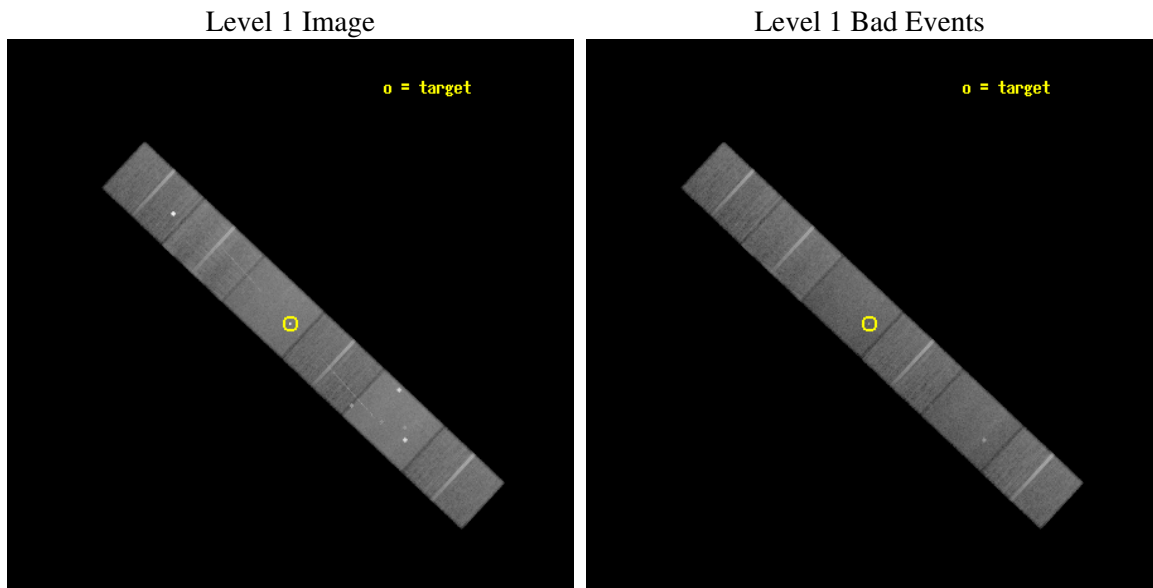
seq_num	200172
obs_id	2564
title	A TALE OF TWO G STARS
observer	Dr. Thomas Ayres
object	24 URSAE MAJORIS
dtcycle	0
cycle	P
ra_targ	143.62
dec_targ	69.830278
ra_nom	143.6197805813
dec_nom	69.832499266984
roll_nom	223.05682896305
revision	2
ontime	45102.5
livetime	44374.055504832
ontime4	45102.5
ontime5	45102.5
ontime6	45102.5
ontime7	45102.5
ontime8	45102.5
ontime9	45102.5
l2events	327874



2 OBI

2.1 OBI

2.1.1 Images

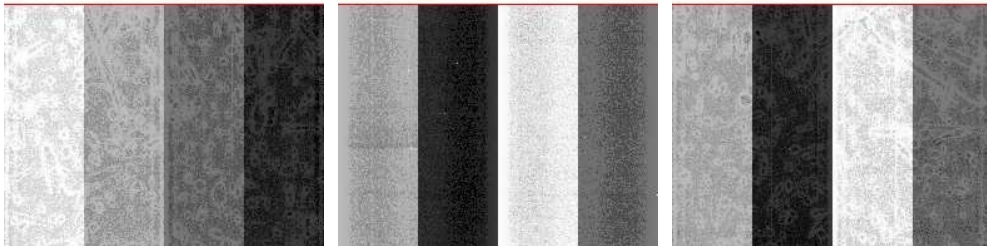


2.1.2 Bias

Chip 4

Chip 5

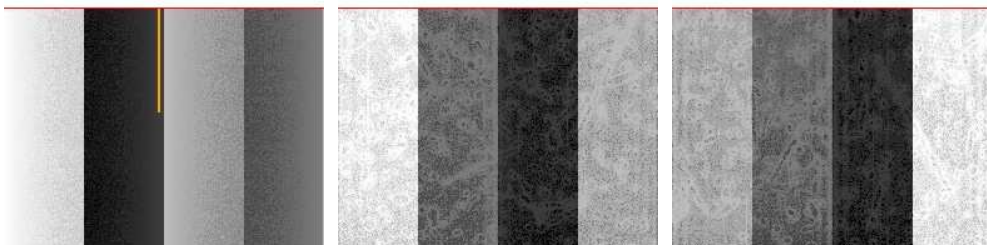
Chip 6



Chip 7

Chip 8

Chip 9



2.1.3 Parameters

obi_num	1
ascdsver	7.6.8.1
caldsver	3.2.3
date	2006-09-08T12:23:07
revision	2

sched_exp_time	45000.000000
ontime	45107.995598346
ontime4	45107.995598346
ontime5	45107.995598346
ontime6	45107.995598346
ontime7	45107.995598346
ontime8	45107.995598346
ontime9	45107.995598346
l1events	1536690

2.1.4 Events

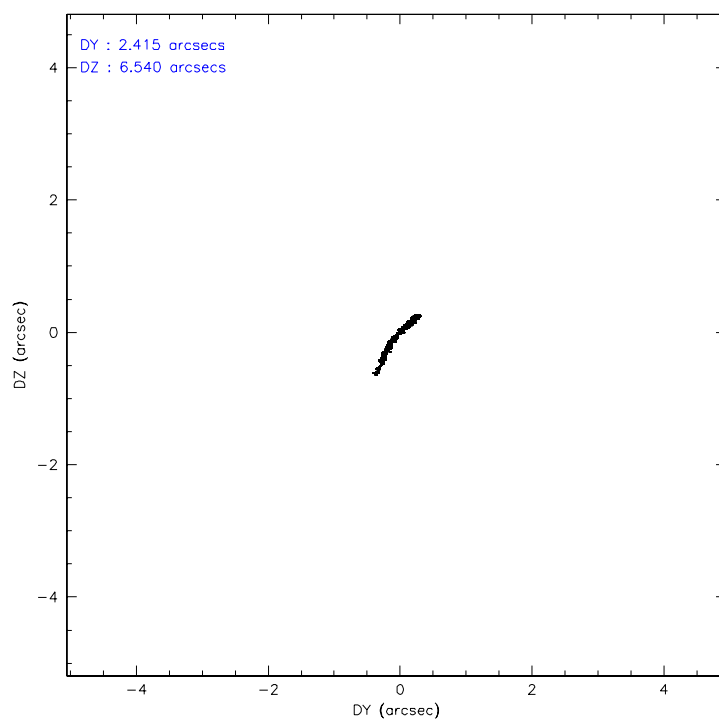
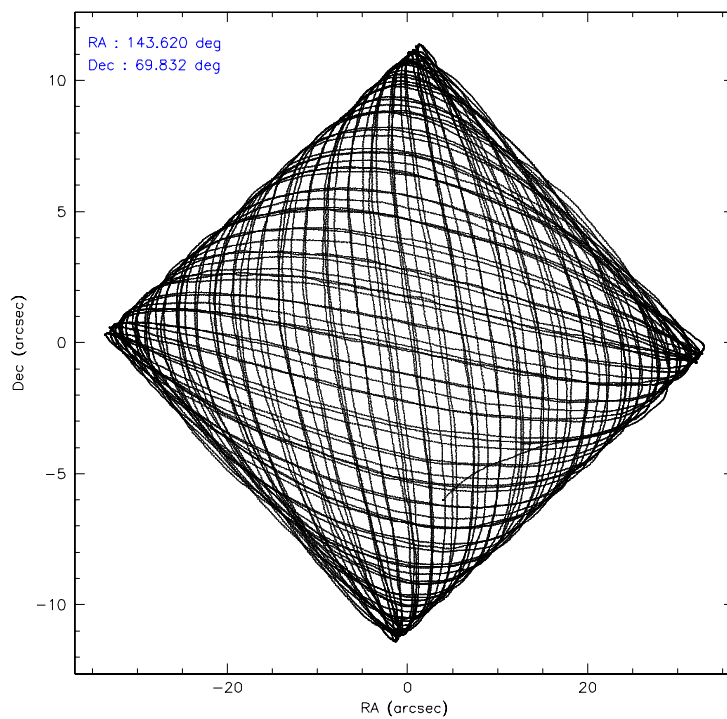
	ccd 4	ccd 5	ccd 6	ccd 7	ccd 8	ccd 9
level 1 events	235375	310008	216487	278126	269234	227460
rejected events	209185	166230	190338	164834	212463	185708
rejected %	88%	53%	87%	59%	78%	81%

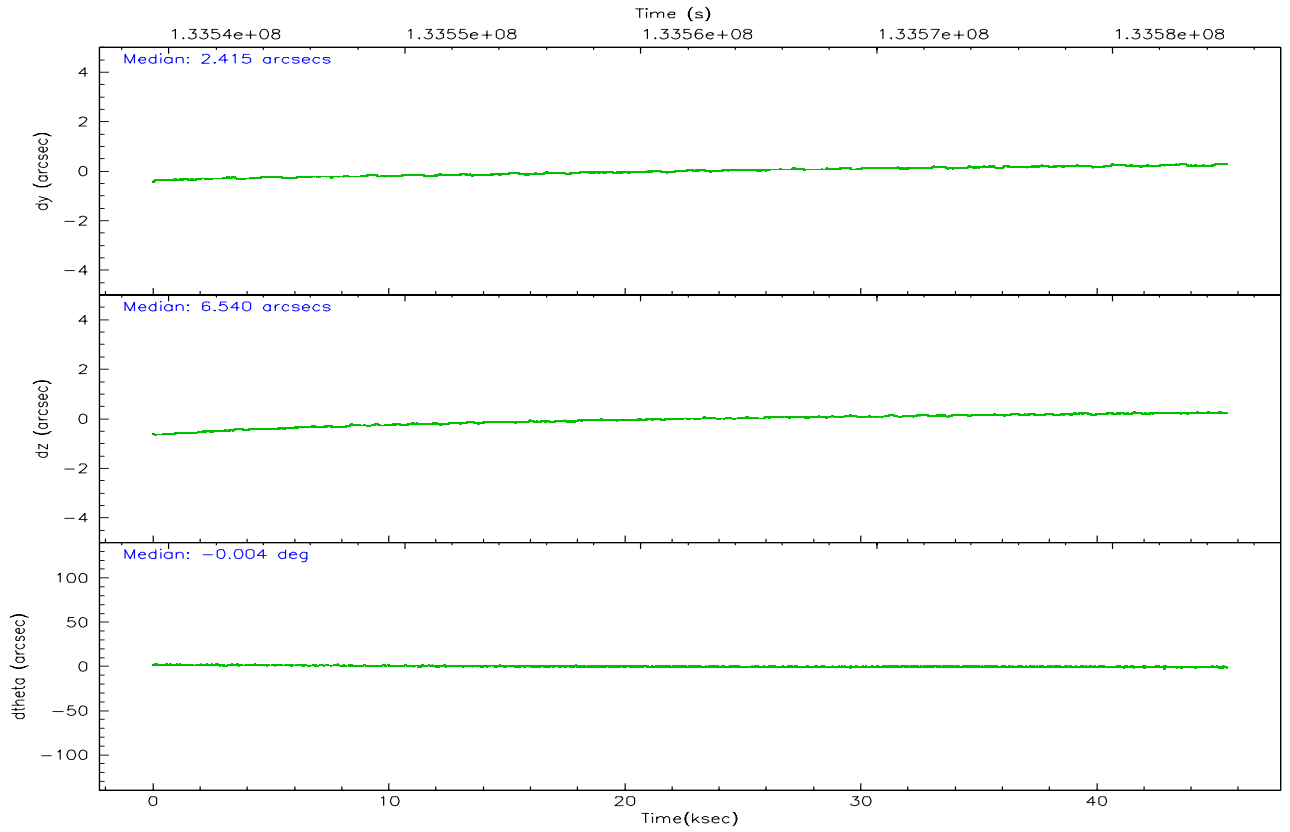
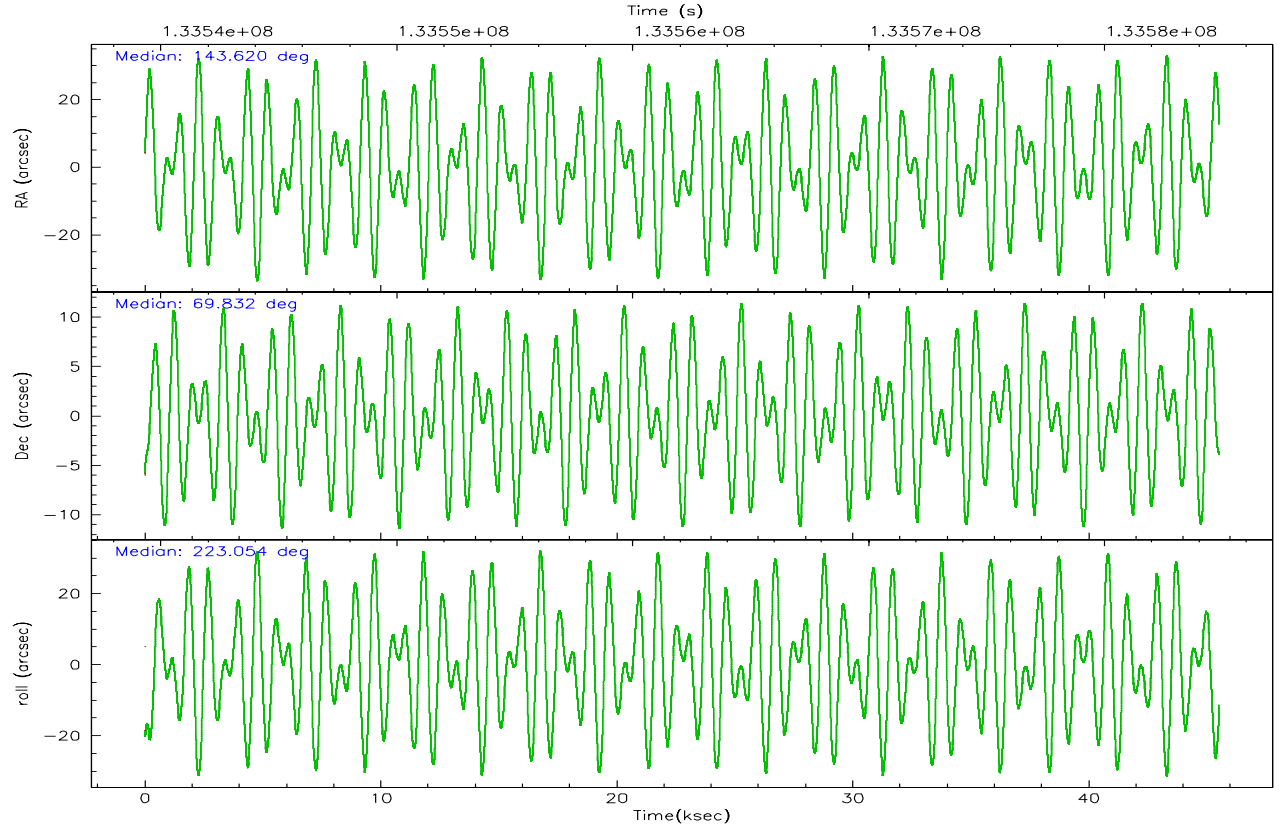
	ccd 4	ccd 5	ccd 6	ccd 7	ccd 8	ccd 9
grade 0 events	10339	21948	11094	8185	18775	24552
	4%	7%	5%	2%	6%	10%
grade 1 events	108	1356	79	214	145	99
	0%	0%	0%	0%	0%	0%
grade 2 events	6231	40000	5066	27661	11640	7020
	2%	12%	2%	9%	4%	3%
grade 3 events	2574	3855	2635	7473	6381	2695
	1%	1%	1%	2%	2%	1%
grade 4 events	2519	3743	2596	7228	5839	2503
	1%	1%	1%	2%	2%	1%
grade 5 events	7609	15318	8934	20178	11483	9208
	3%	4%	4%	7%	4%	4%
grade 6 events	4530	74247	4761	62759	14139	4986
	1%	23%	2%	22%	5%	2%
grade 7 events	201465	149541	181322	144428	200832	176397
	85%	48%	83%	51%	74%	77%

2.2 Compared Parameters

Parameter	Planned	Actual	Parameter	Planned	Actual
Instrument	ACIS	ACIS	Obspar format version number	6	6
Detector	ACIS-456789	ACIS-456789	Obspar file type	PREDICTED	ACTUAL
Grating	HETG	HETG	Obspar update status	NONE	UPDATED
Data mode	FAINT	FAINT	On-chip summing requested	N	N
Observation mode	POINTING	POINTING	Subarray requested	CUSTOM	CUSTOM
Pointing RA	143.641831	143.6197805812982	Subarray start row	1	1
Pointing Dec	69.858654	69.83249926698427	Subarray row count	774	774
Pointing Roll	222.879507	223.0568289630534	Alternating exposures requested	N	N
SIM focus pos (mm)	-0.684267	-0.6828225247311905	Primary exposure time	0.000000	2.5
SIM defocus (mm)	0	0.001444936568705701			
SIM translation stage pos (mm)	-187.132523	-187.1254020033014			
SIM translation stage offset (mm)	-3	-3.007120579706367			
Observation start time	133539858.184000	133538727.83178			
Observation start date	2002-03-26T14:23:14	2002-03-26T14:05:27			
Observation end time	133584858.184000	133585336.12117			
Observation end date	2002-03-27T02:53:14	2002-03-27T03:02:16			
Read mode	TIMED	TIMED			

2.3 Aspect



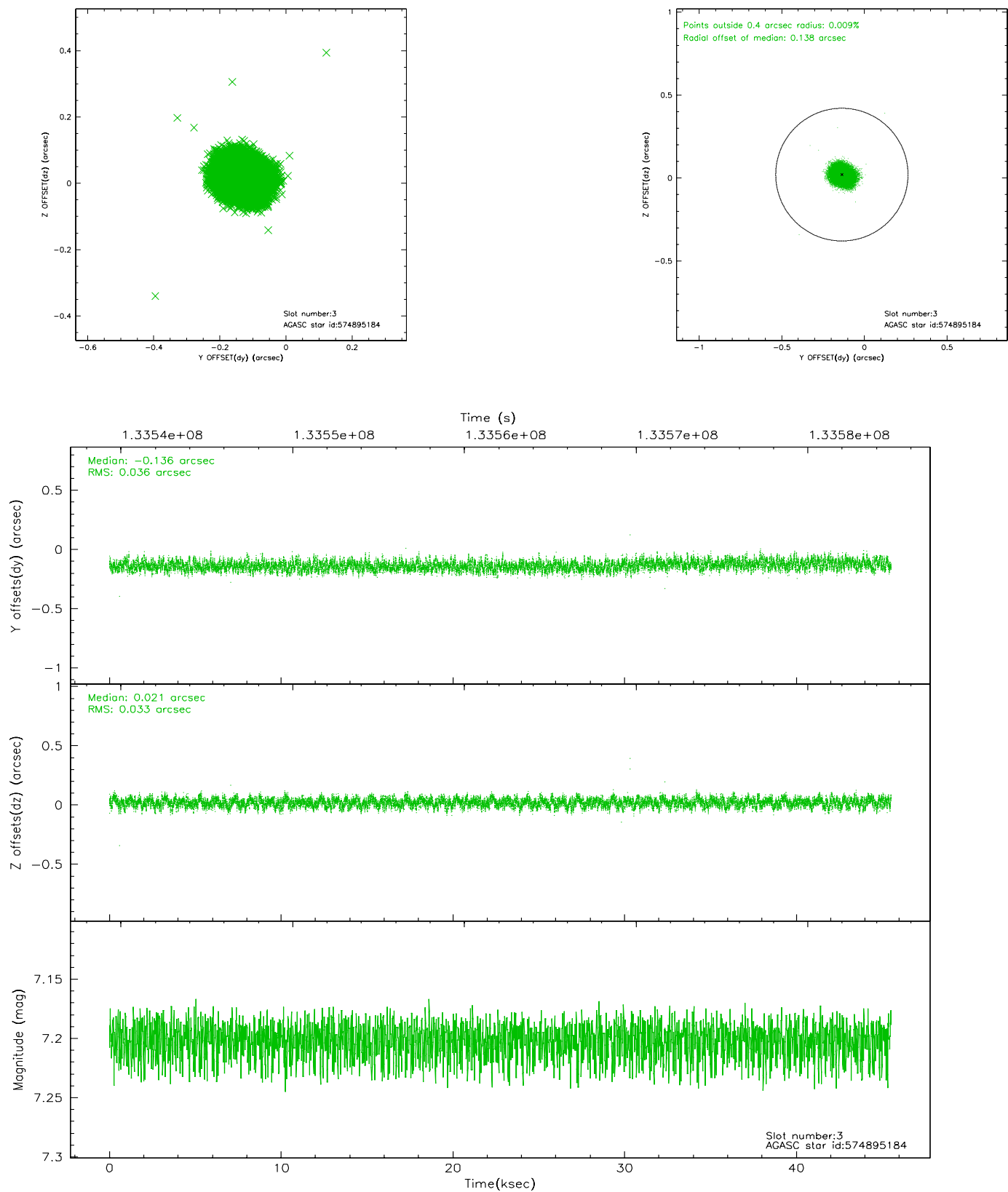


Slot Statistics

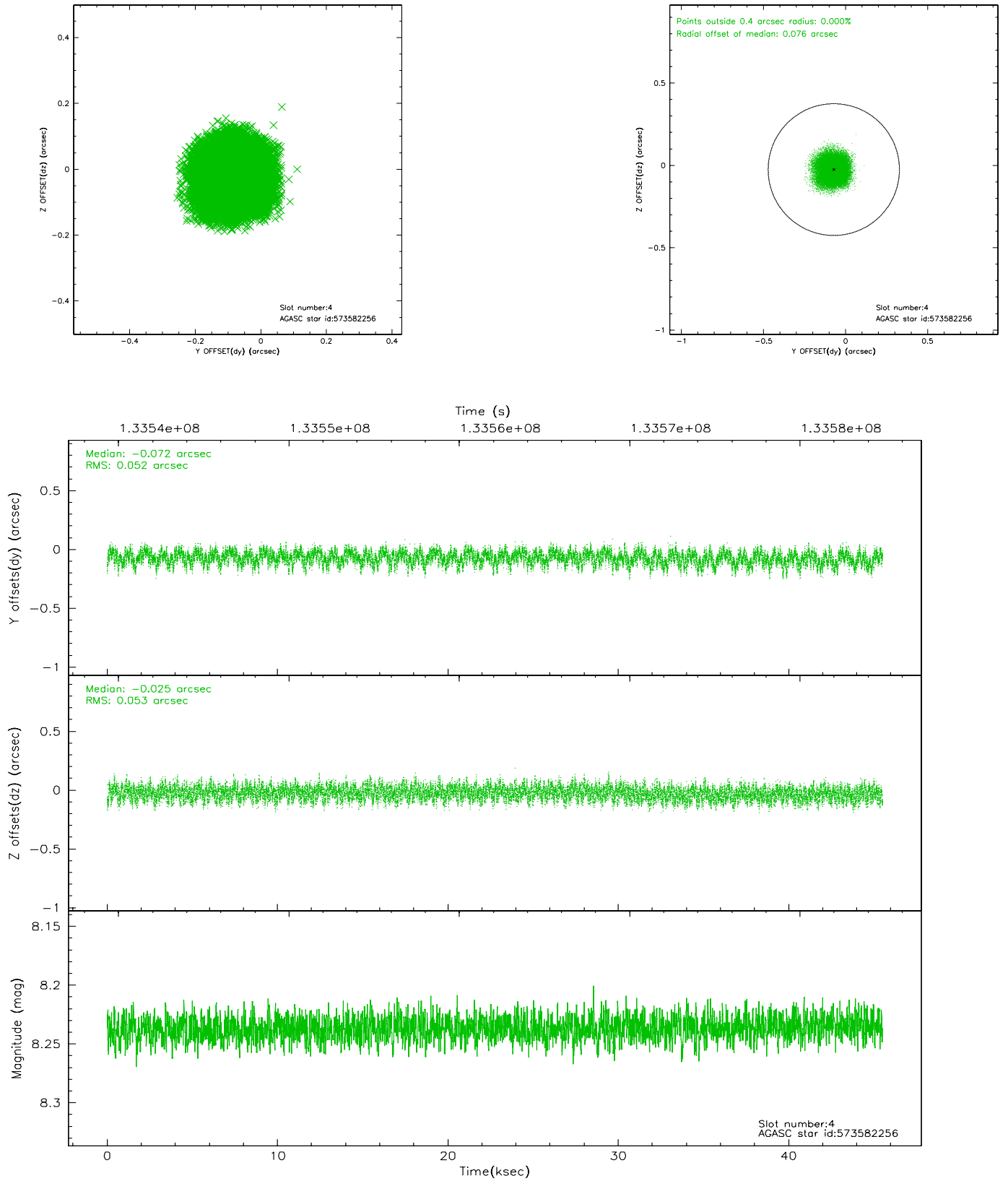
slot	status	id	mag	n_pts	med_dy	med_dz	dr1	dr2	ra	dec	mean_y	mean_z
0	FID	ACIS-S-2	7.10	11105	-0.026	-0.040	0.012	0.020	0.000000	0.000000	-754.85	-1789.76
1	FID	ACIS-S-4	7.19	11104	-0.040	0.023	0.014	0.023	0.000000	0.000000	2158.41	118.78
2	FID	ACIS-S-5	7.23	11105	0.035	0.024	0.012	0.023	0.000000	0.000000	-1807.63	112.44
3	GUIDE	574895184	7.20	22207	-0.136	0.021	0.053	0.083	144.571194	70.266109	-1831.70	-312.93
4	GUIDE	573582256	8.24	22203	-0.072	-0.025	0.081	0.125	143.901691	69.156997	1474.41	2076.69
5	GUIDE	574896672	9.34	22191	-0.038	0.048	0.076	0.121	144.520516	70.337168	-1956.92	-543.92
6	GUIDE	573583384	9.42	22193	0.111	-0.047	0.120	0.191	142.247635	69.383402	2445.69	36.17
7	GUIDE	573578552	9.47	22193	0.140	0.006	0.116	0.193	141.668881	69.706297	2151.58	-1303.47

2.4 Star Slots

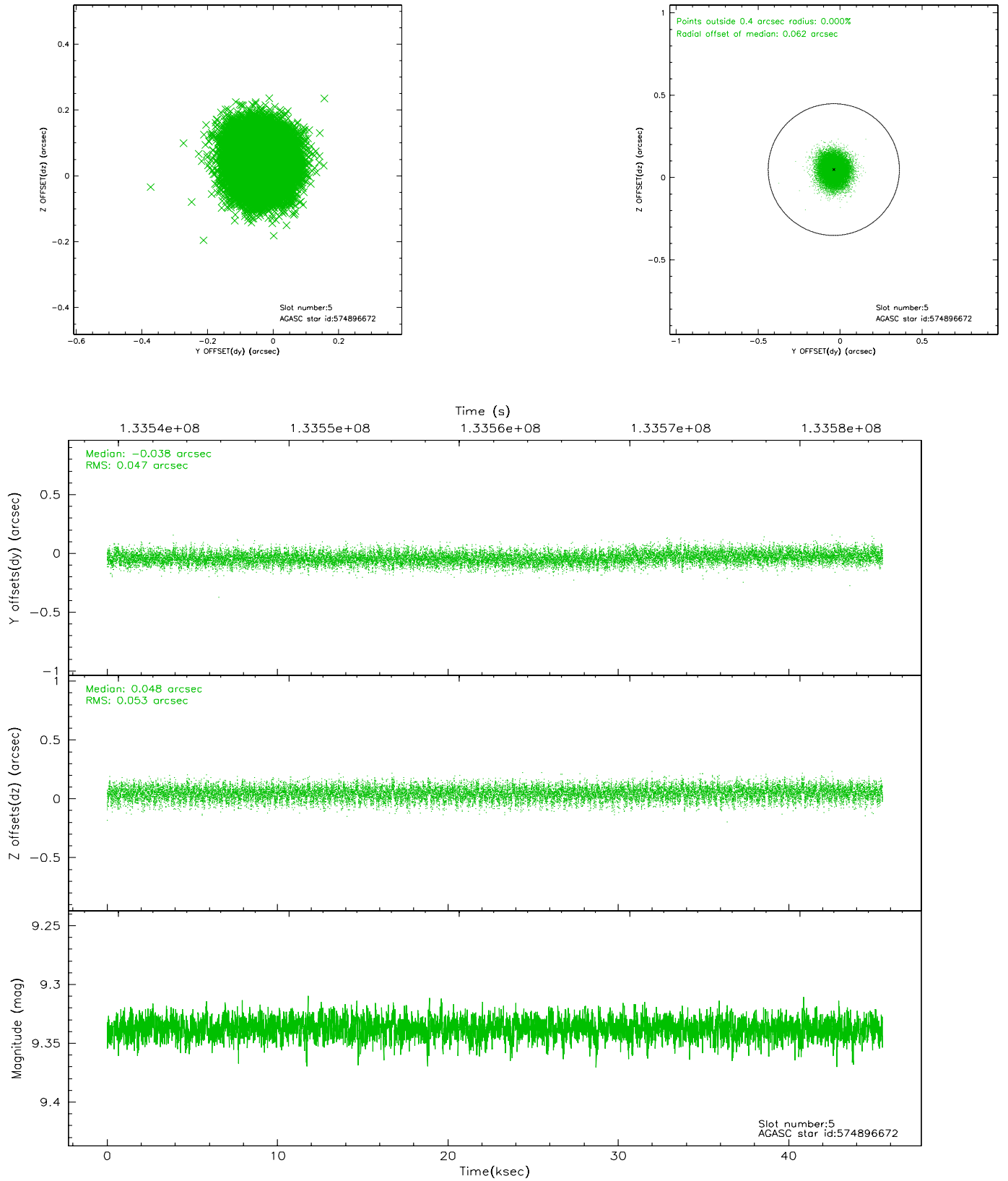
2.4.1 Slot 3



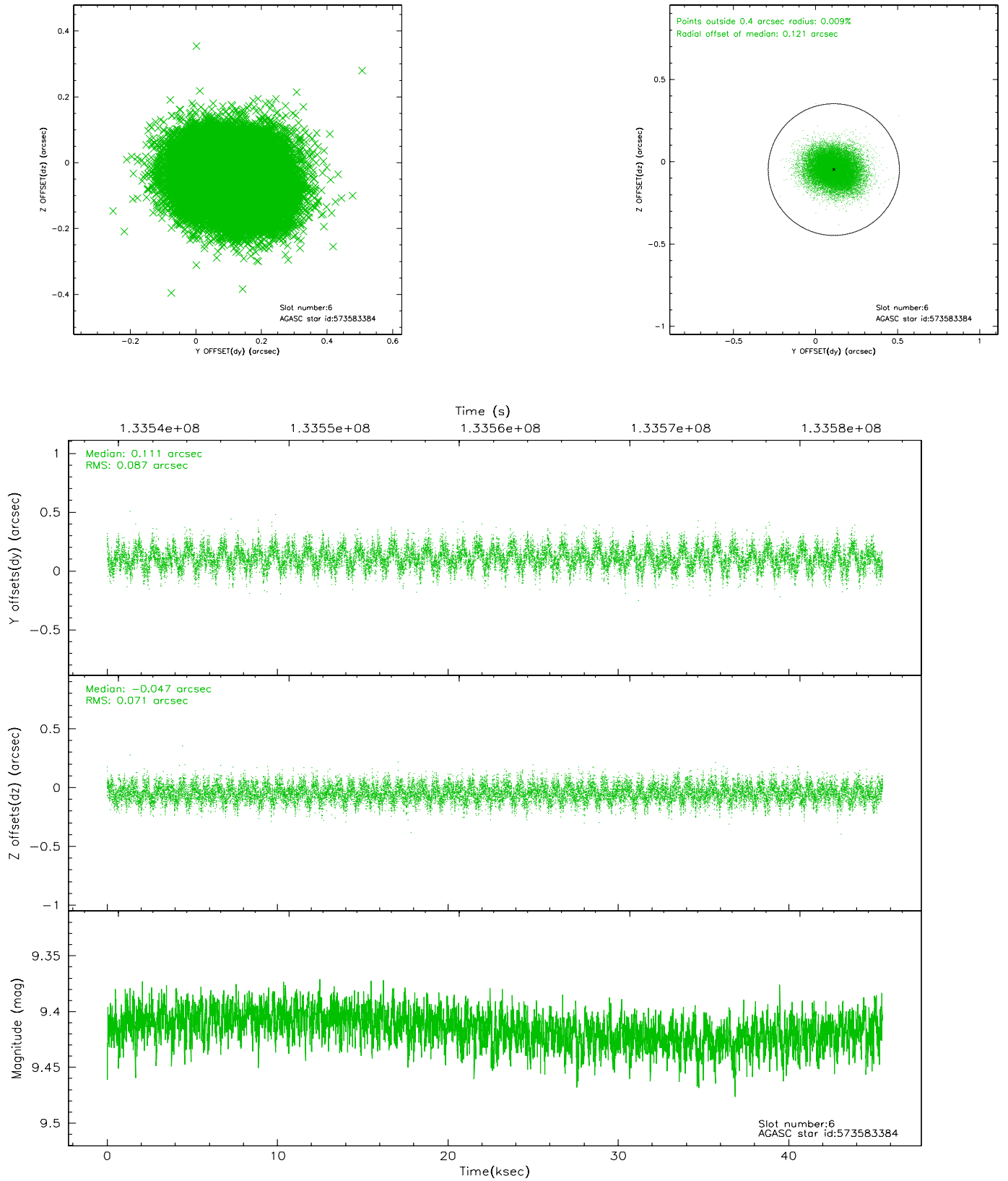
2.4.2 Slot 4



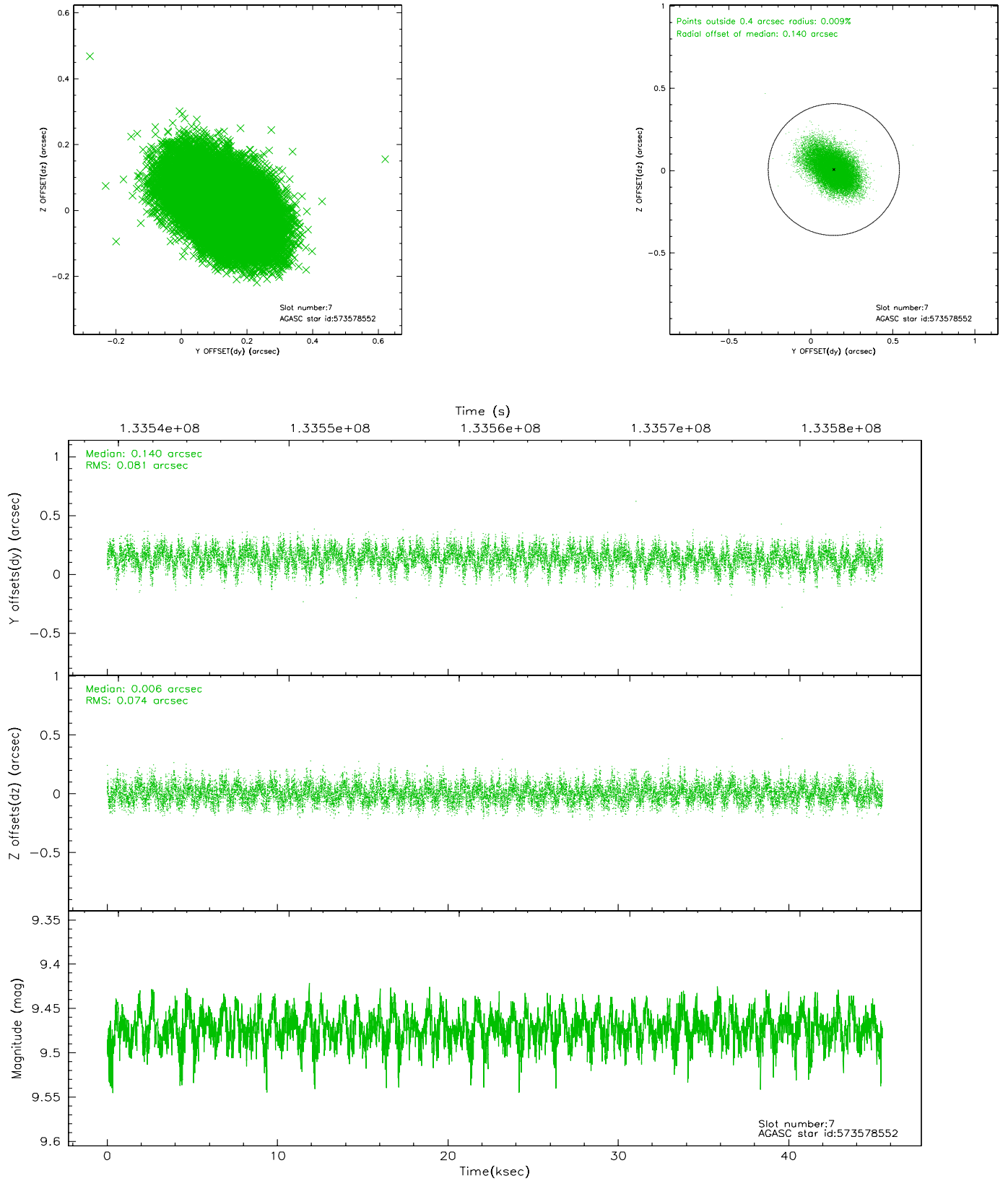
2.4.3 Slot 5



2.4.4 Slot 6

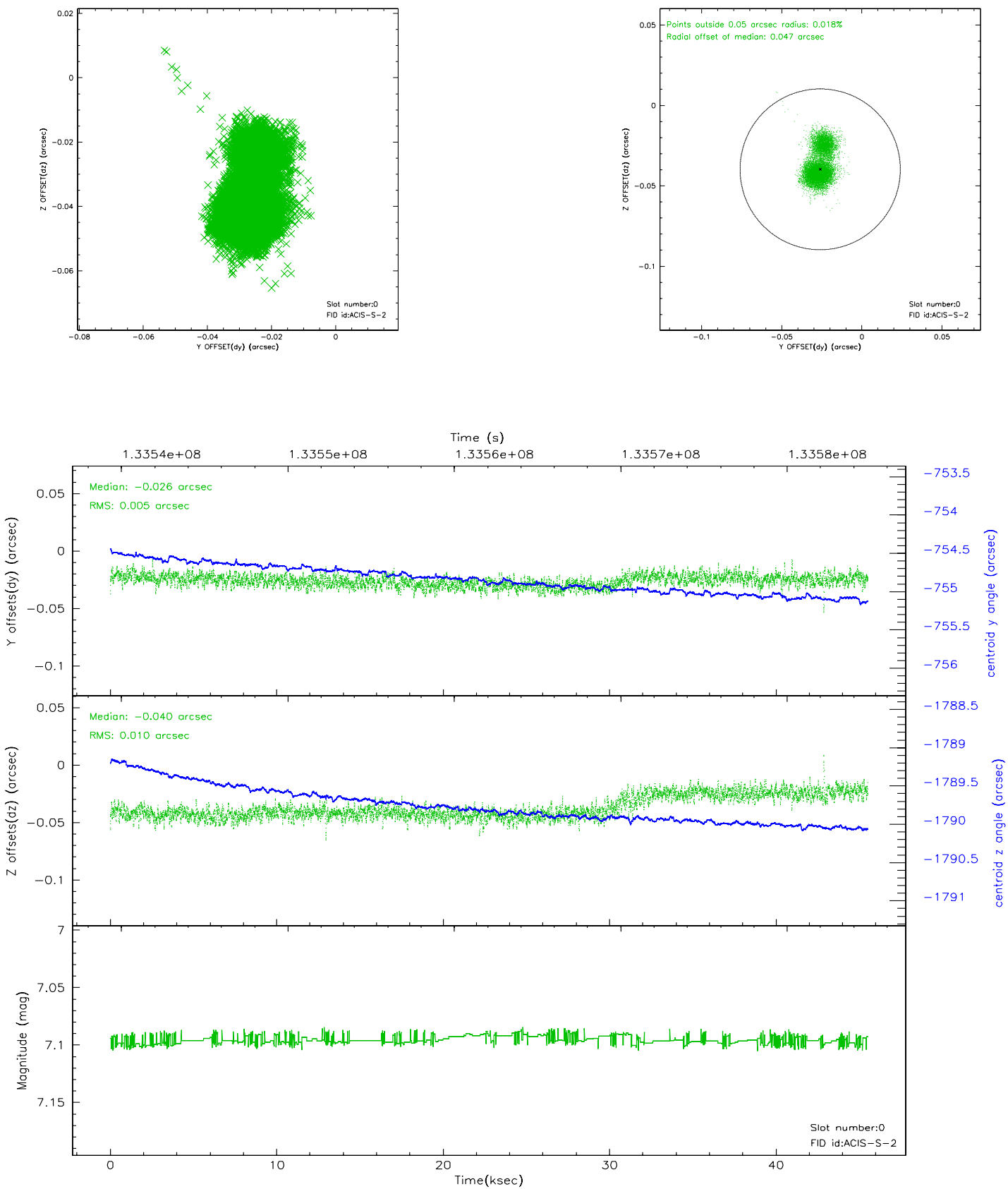


2.4.5 Slot 7

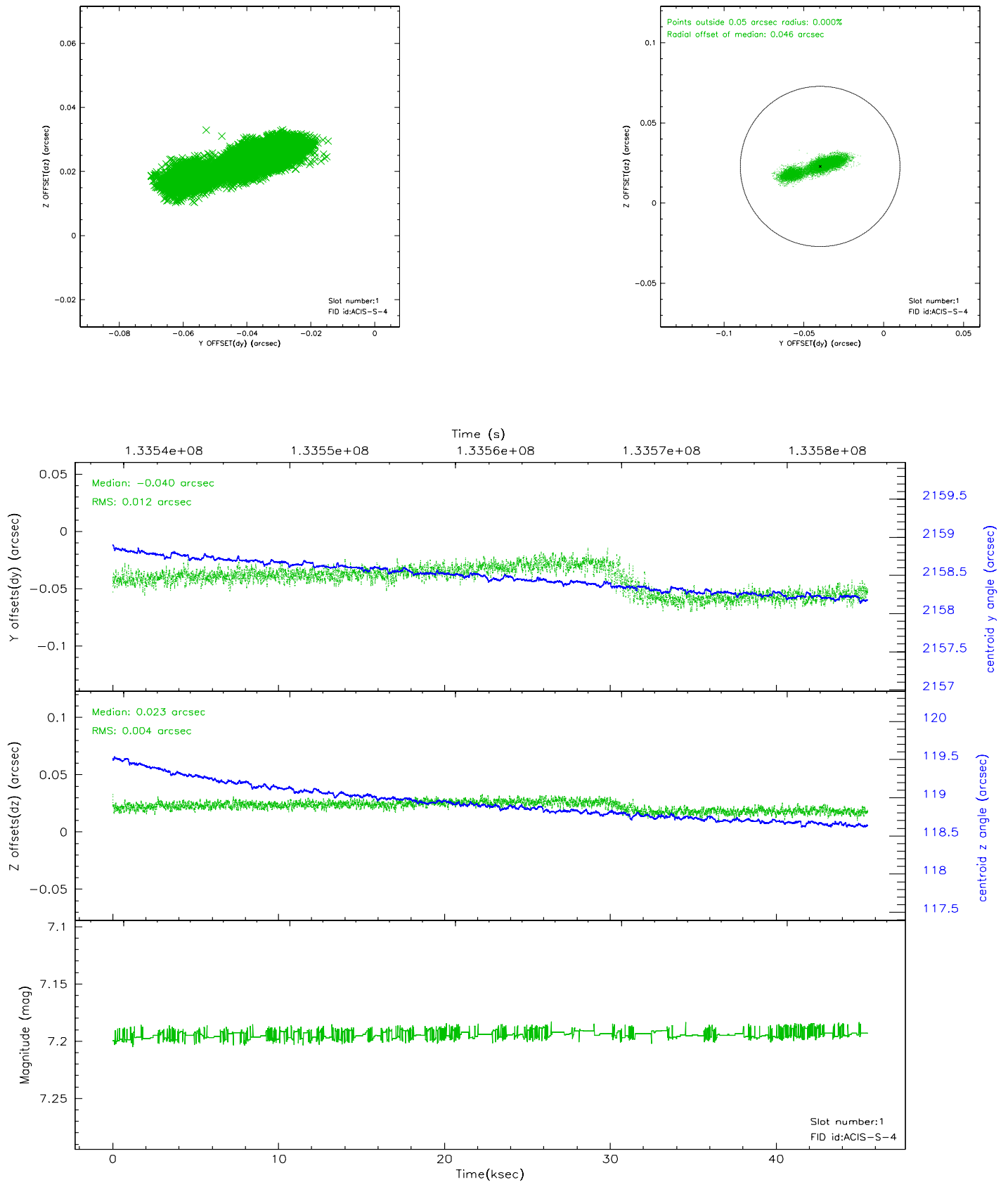


2.5 FID Slots

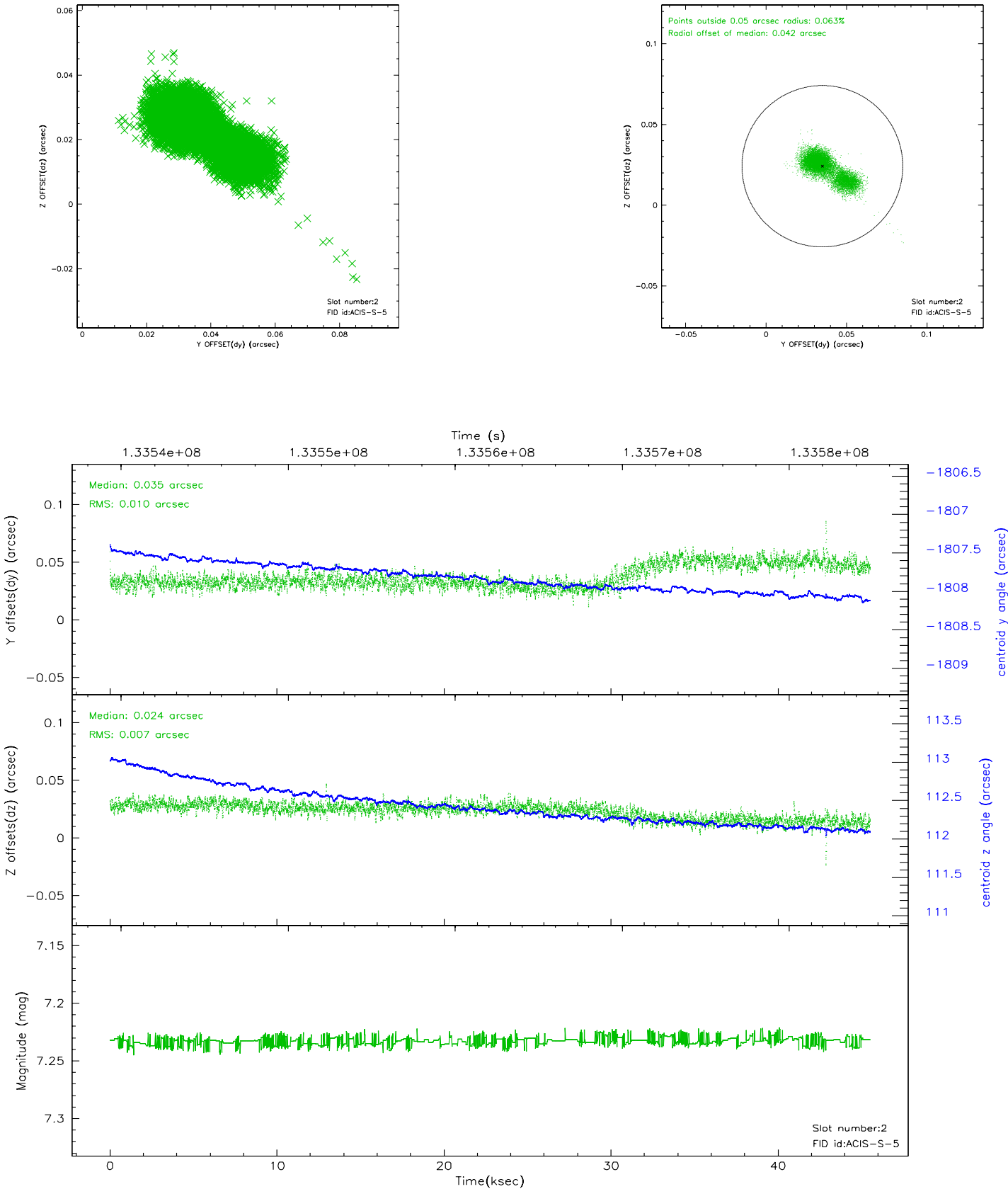
2.5.1 Slot 0



2.5.2 Slot 1

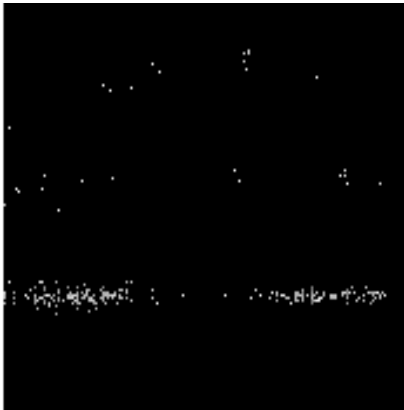


2.5.3 Slot 2

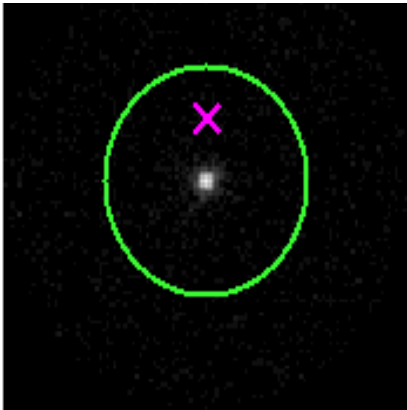


3 Gratings

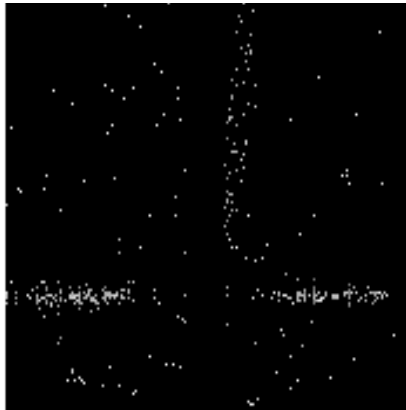
3.1 HEG Arm



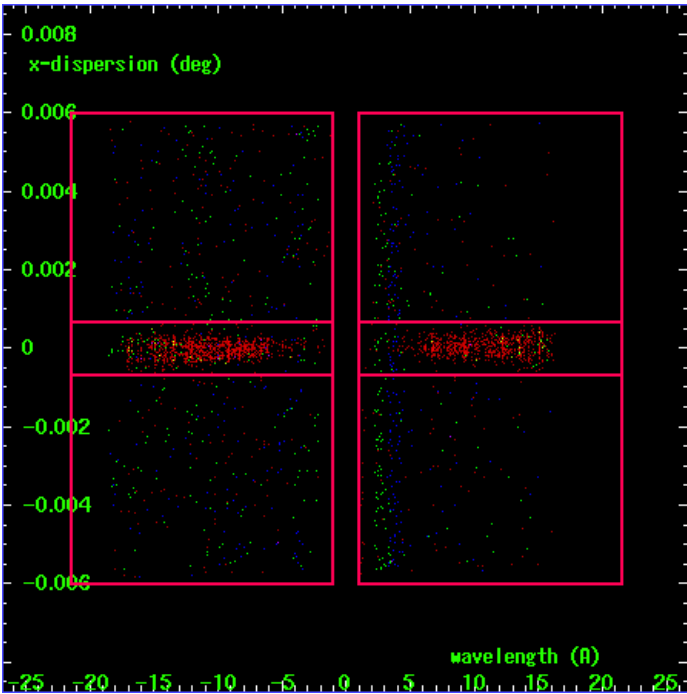
HEG Order Sort 123



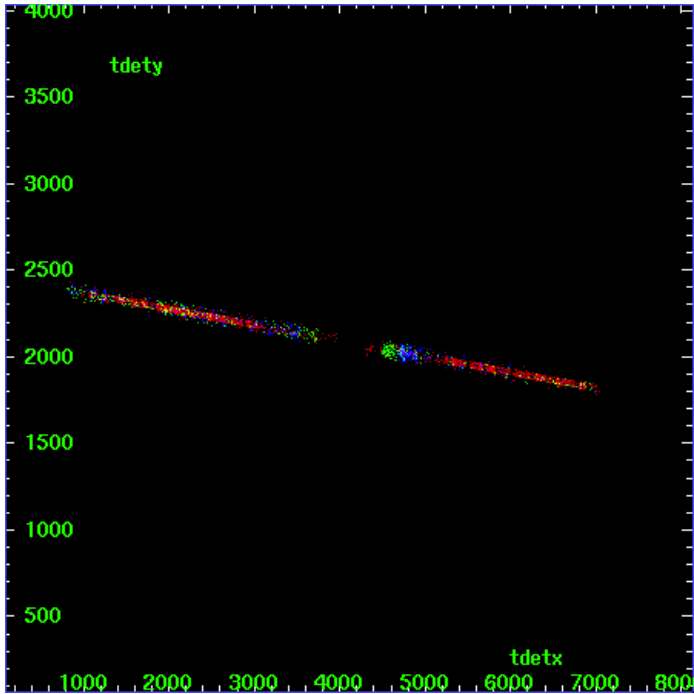
HEG Zero Order



HEG Order Sort ALL

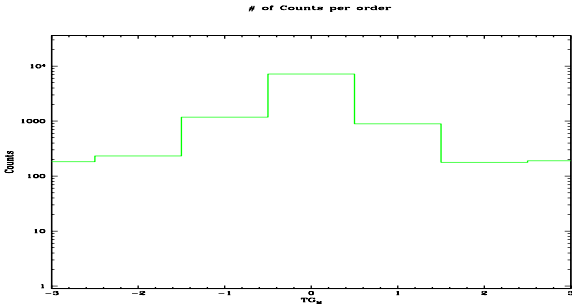


Spot Image HEG

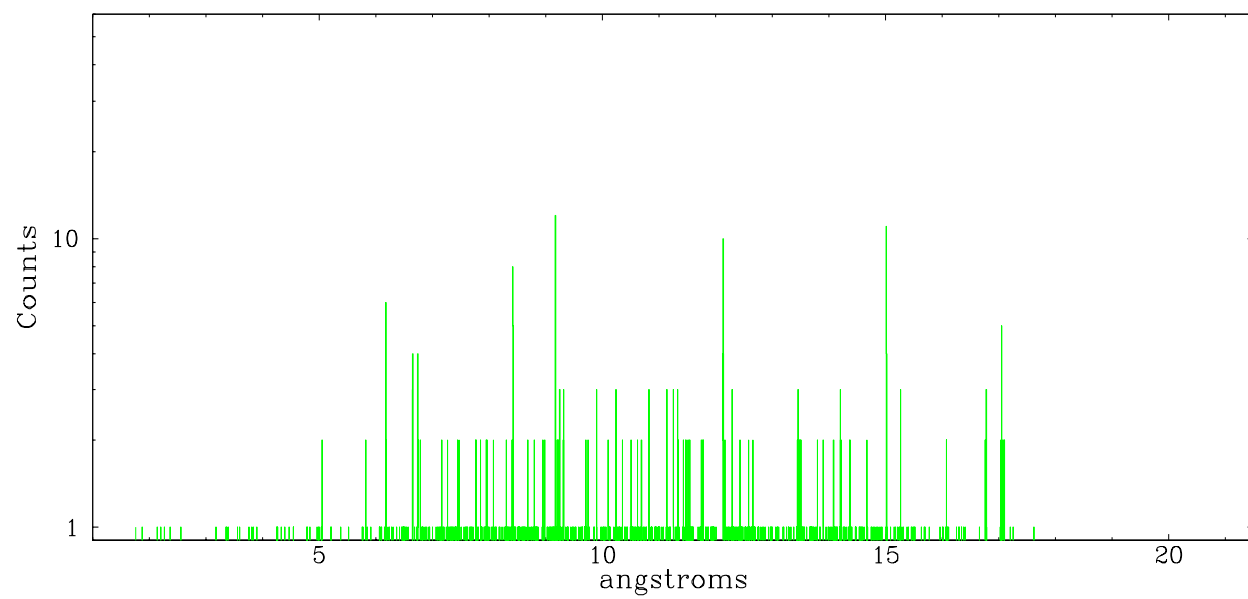


Full Detector HEG

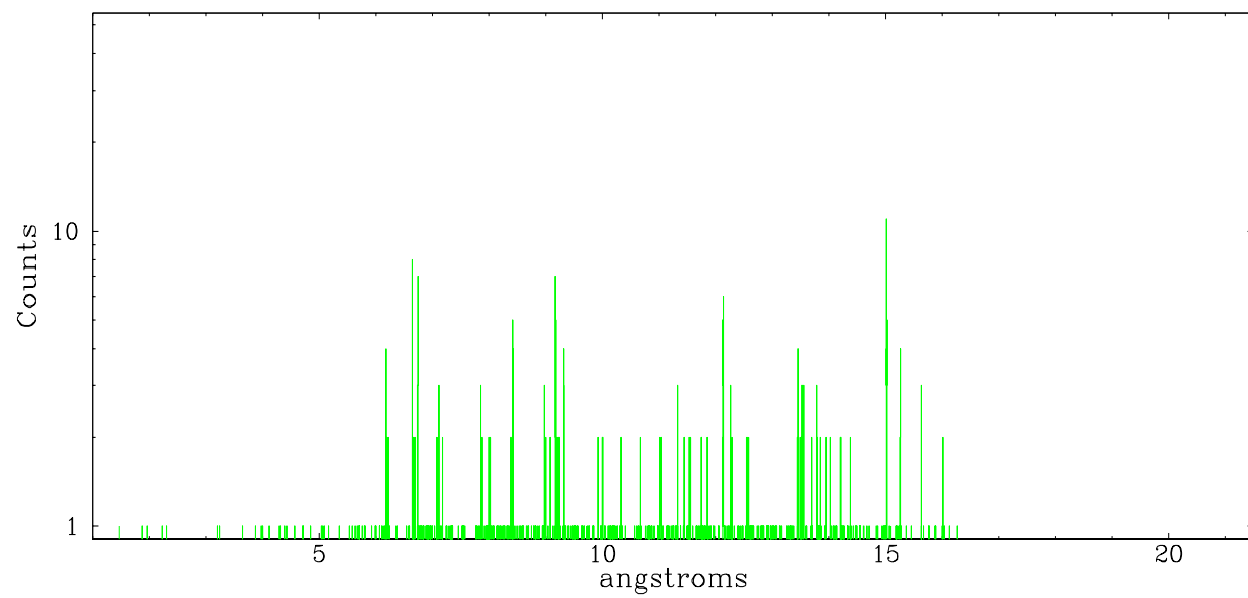
	order -3	order -2	order -1	order 0	order 1	order 2	order 3
Events	183	233	1180	7163	891	178	189



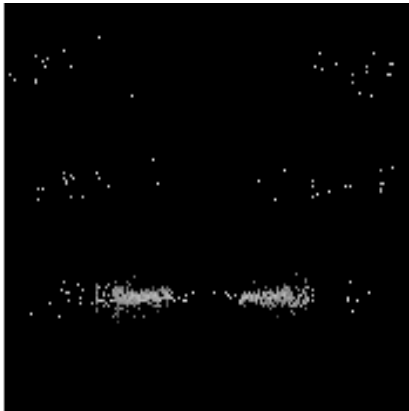
neg order -1



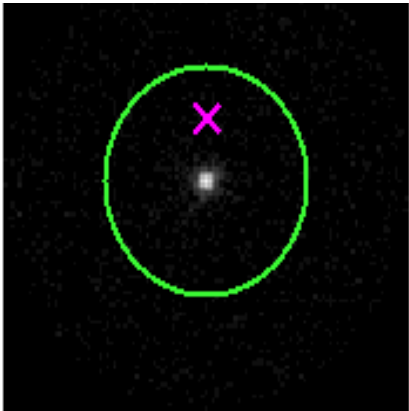
neg order +1



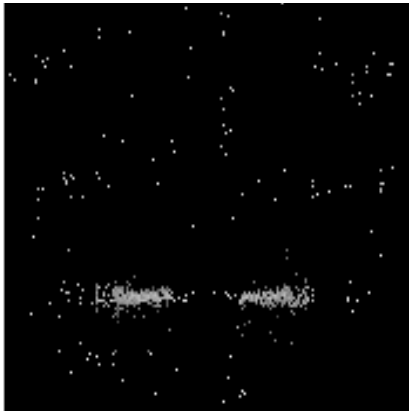
3.2 MEG Arm



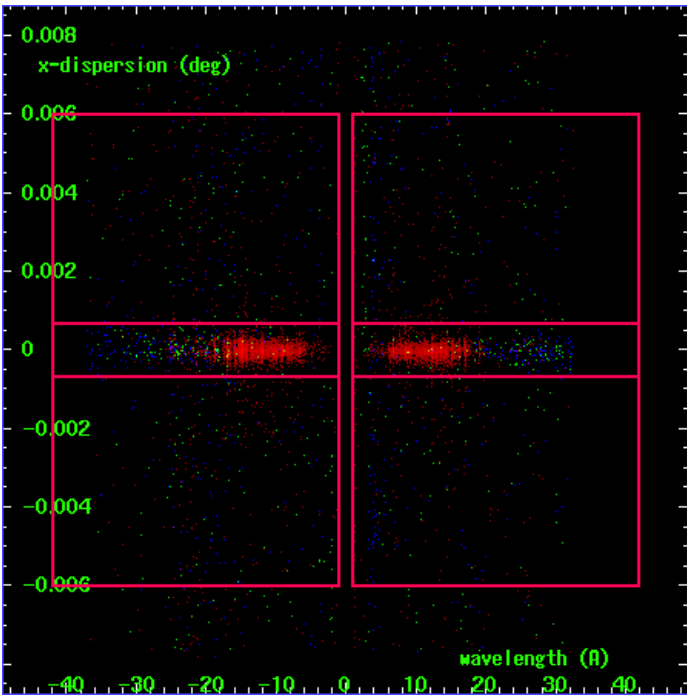
MEG Order Sort 123



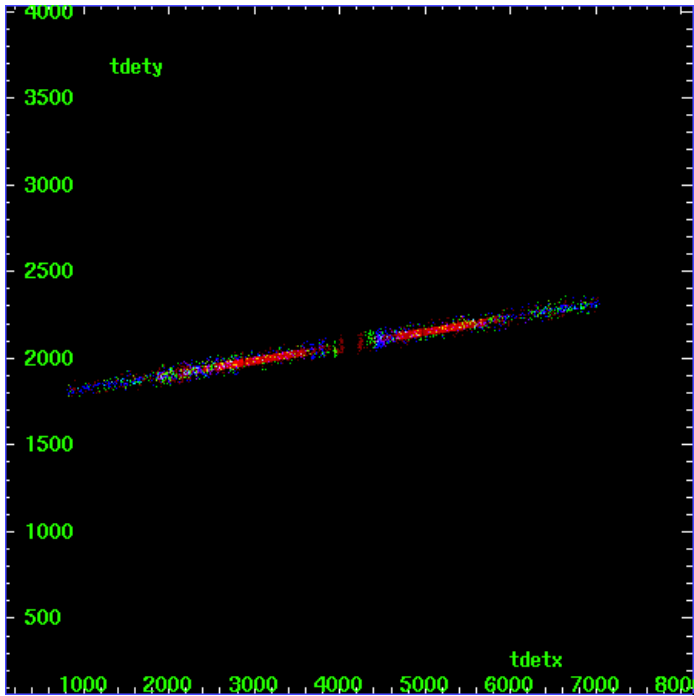
MEG Zero Order



MEG Order Sort ALL

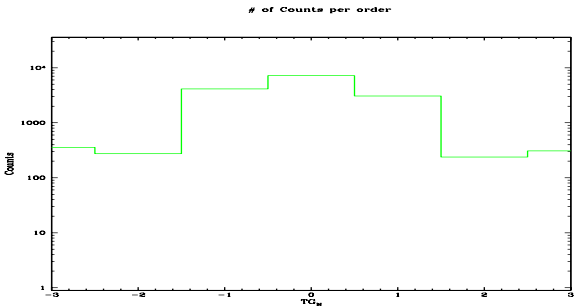


Spot Image MEG

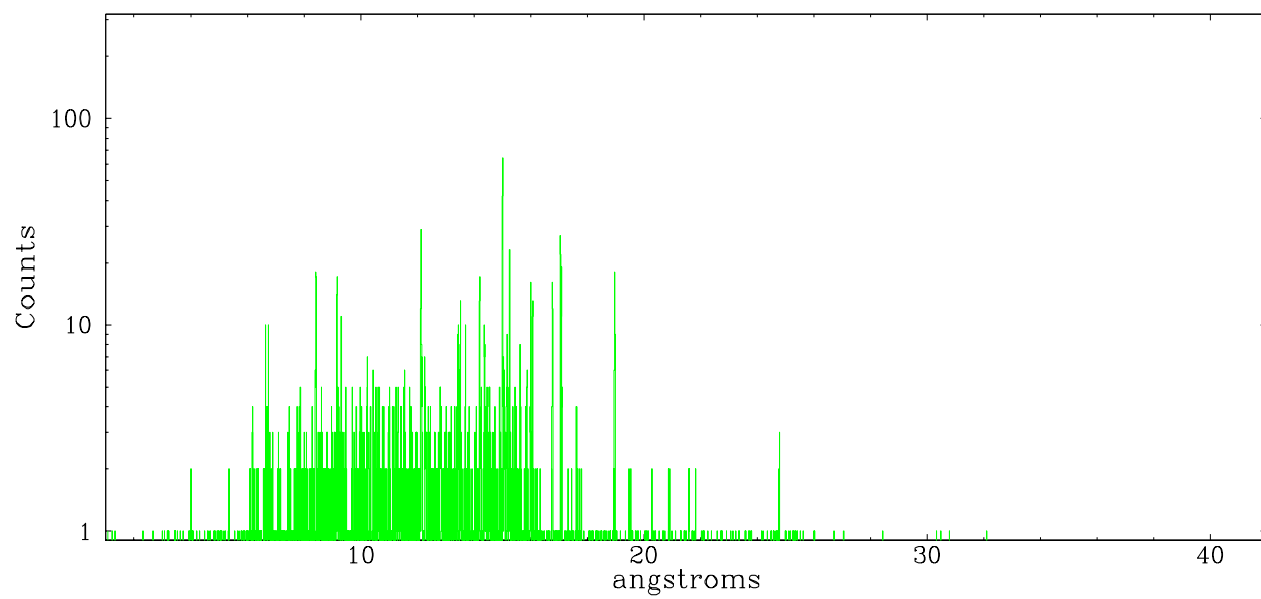


Full Detector MEG

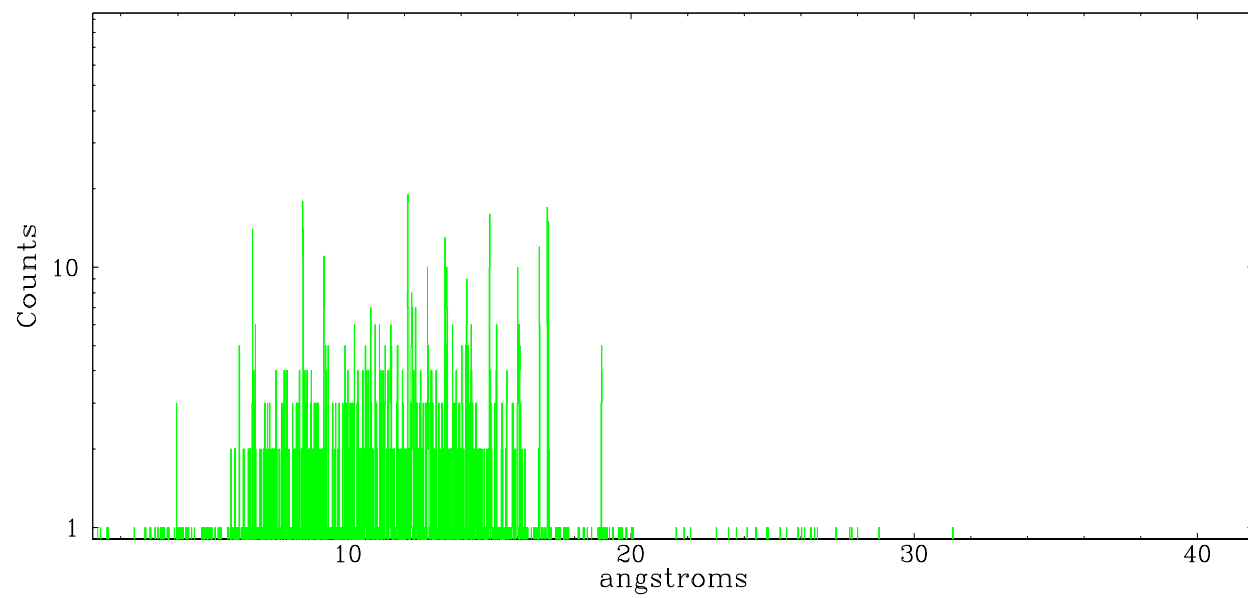
	order -3	order -2	order -1	order 0	order 1	order 2	order 3
Events	356	275	4122	7163	3077	238	309



meg order -1



meg order +1



A Summary

A.1 Status

V&V Scientist	Beth Sundheim
V&V Date (YYYY-MM-DD)	2006.09.08
V&V Edition	1
V&V Disposition and Status	OK
V&V Charge Time	45.105

A.2 Comments