

V&V Reference Report

L2 ASCDS Version : 7.6.9

Observation 2563 - L2 Version 001
Chandra X-Ray Center

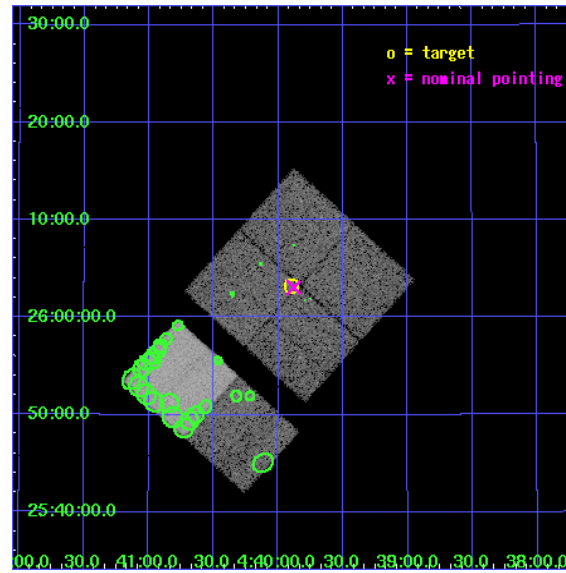
L2 Processing Date : Oct 15 2006

Contents

1	Front	2
2	OBI	3
2.1	OBI	3
2.1.1	Images	3
2.1.2	Bias	3
2.1.3	Parameters	4
2.1.4	Events	4
2.2	Compared Parameters	5
2.3	Aspect	6
2.4	Star Slots	9
2.4.1	Slot 3	9
2.4.2	Slot 4	10
2.4.3	Slot 6	11
2.4.4	Slot 7	12
2.5	FID Slots	13
2.5.1	Slot 0	13
2.5.2	Slot 1	14
2.5.3	Slot 2	15
3	Point Sources	16
A	Summary	17
A.1	Status	17
A.2	Comments	17

1 Front

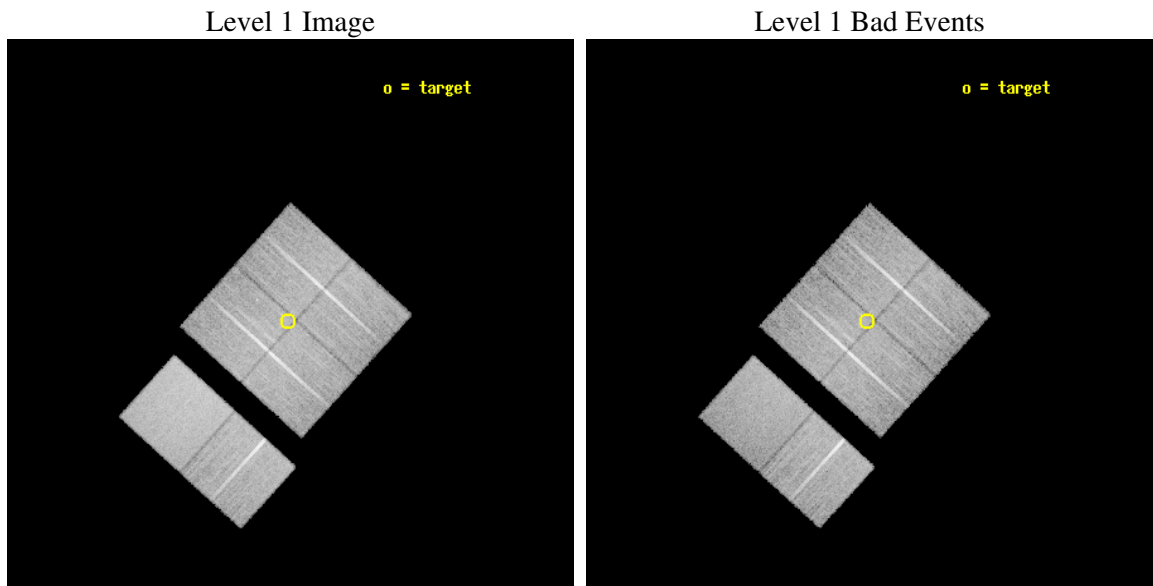
seq_num	200171
obs_id	2563
title	X-RAY EVOLUTION OF ACCRETING PROTOSTARS
observer	DR. PHILIPPE ANDRE
object	L1527
dtcycle	0
cycle	P
ra_targ	69.974583
dec_targ	26.052778
ra_nom	69.96971482741
dec_nom	26.051262555888
roll_nom	222.21081063095
revision	3
ontime	19571.199927092
livetime	19323.377609253
ontime0	19571.199927092
ontime1	19571.199927092
ontime2	19571.199927092
ontime3	19571.199927092
ontime6	19571.199927092
ontime7	19571.199927092
l2events	121152



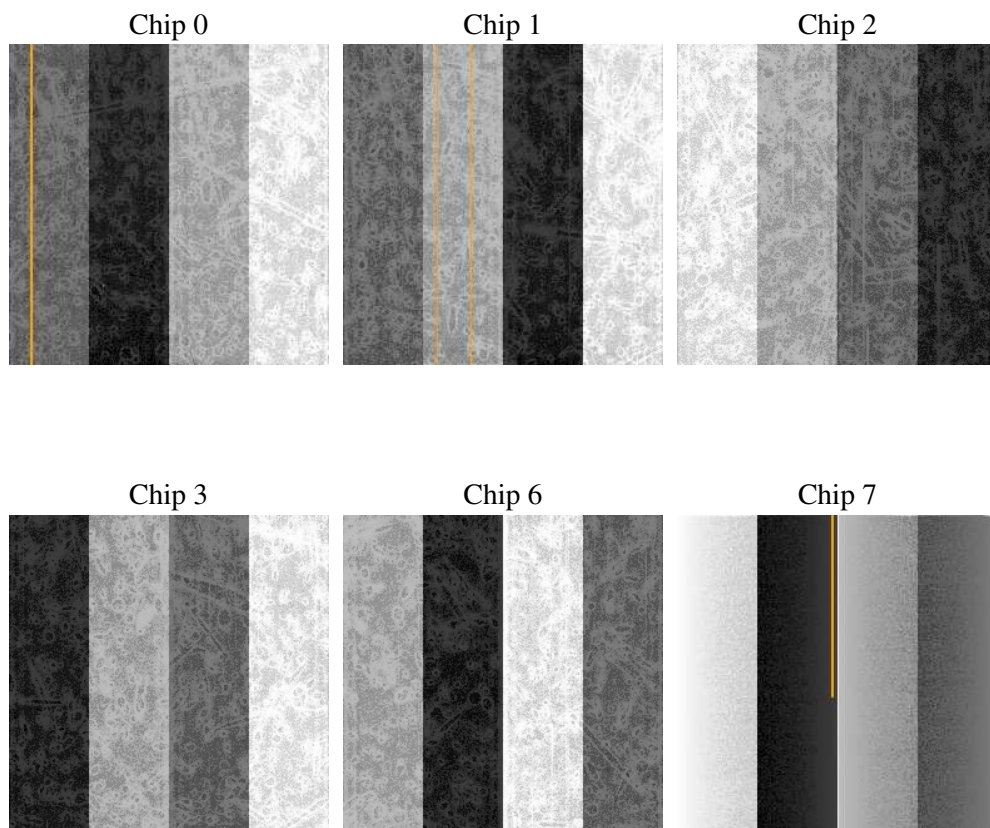
2 OBI

2.1 OBI

2.1.1 Images



2.1.2 Bias



2.1.3 Parameters

obi_num	1
ascdsver	7.6.9
caldsver	3.2.3
date	2006-10-15T05:58:56
revision	3

sched_exp_time	19813.241000
ontime	19575.67958647
ontime0	19575.67958647
ontime1	19575.67958647
ontime2	19575.67958647
ontime3	19575.67958647
ontime6	19575.679566562
ontime7	19575.679566562
l1events	773363

2.1.4 Events

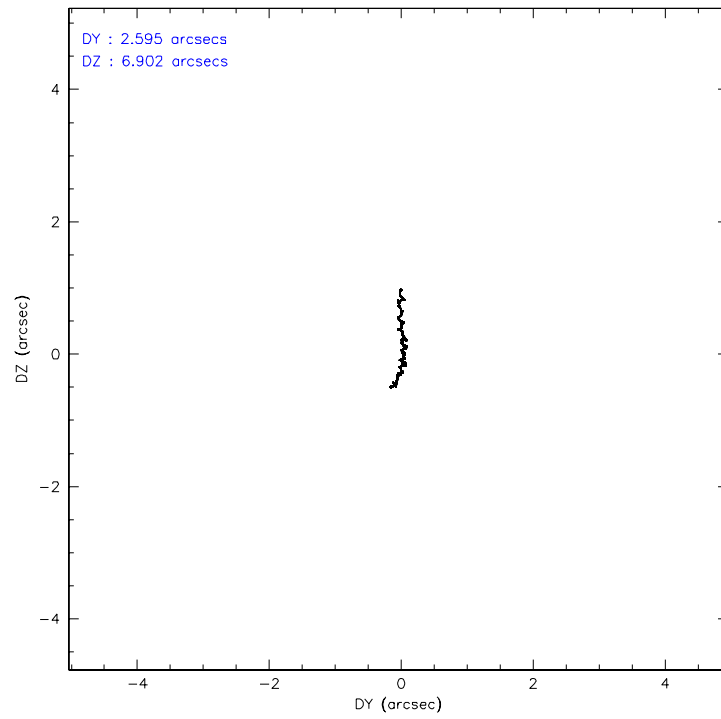
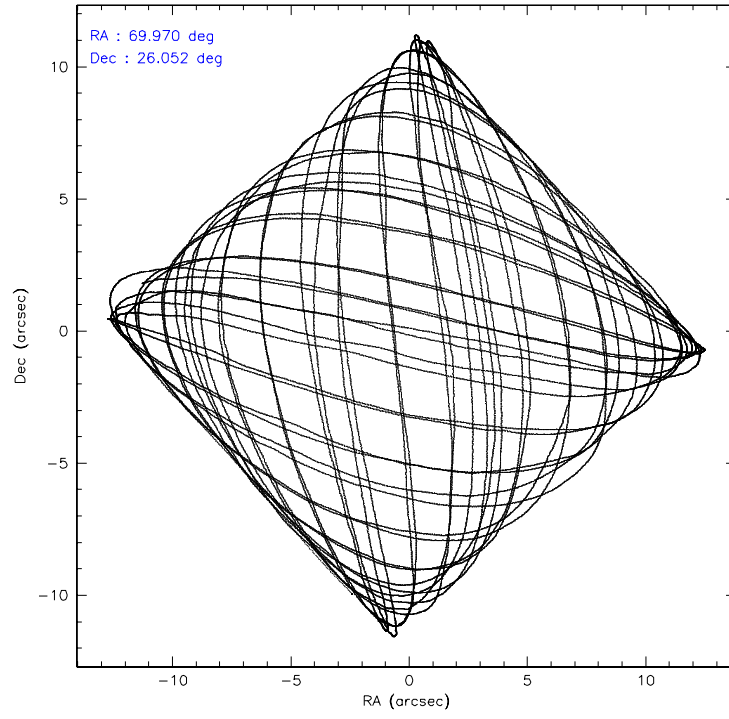
	ccd 0	ccd 1	ccd 2	ccd 3	ccd 6	ccd 7
level 1 events	116108	118012	123553	121870	131196	162624
rejected events	101719	102984	109517	107673	116900	101759
rejected %	87%	87%	88%	88%	89%	62%

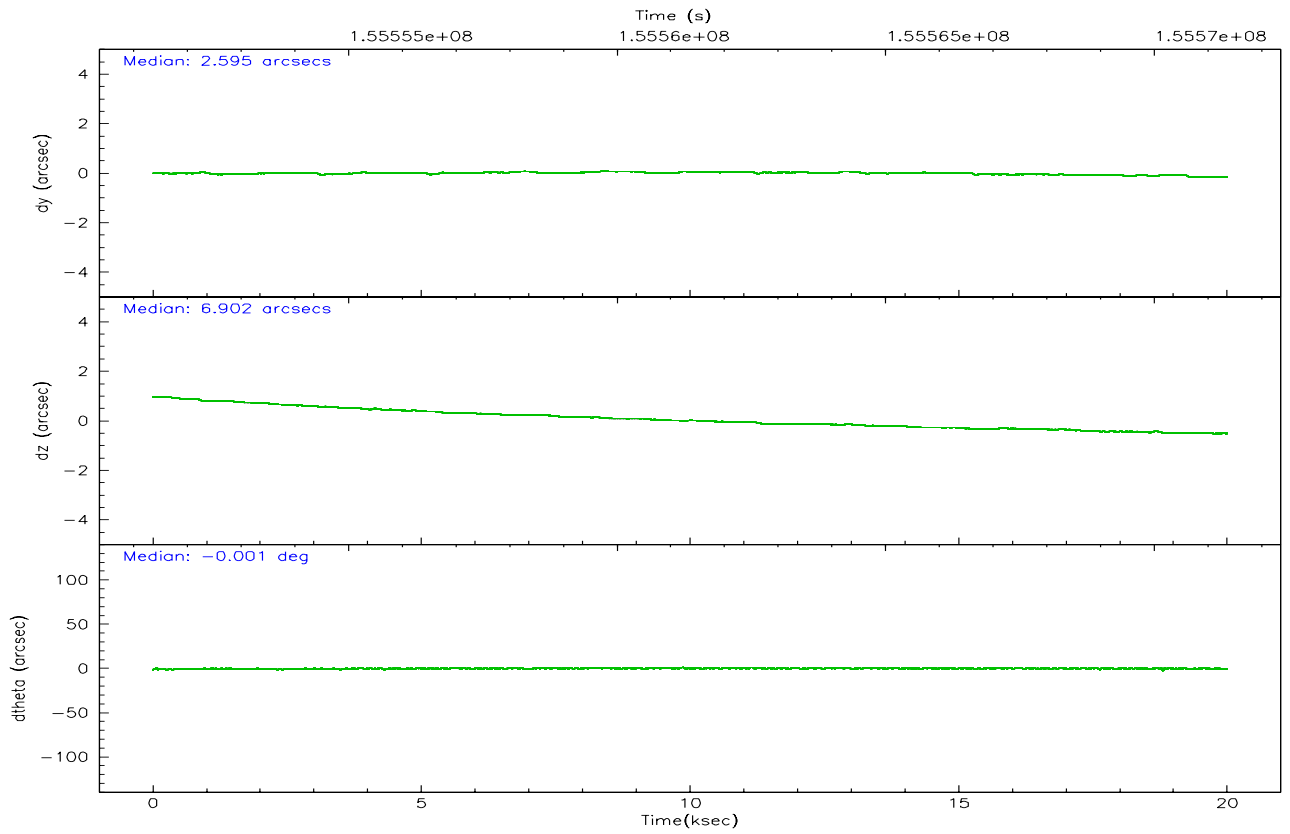
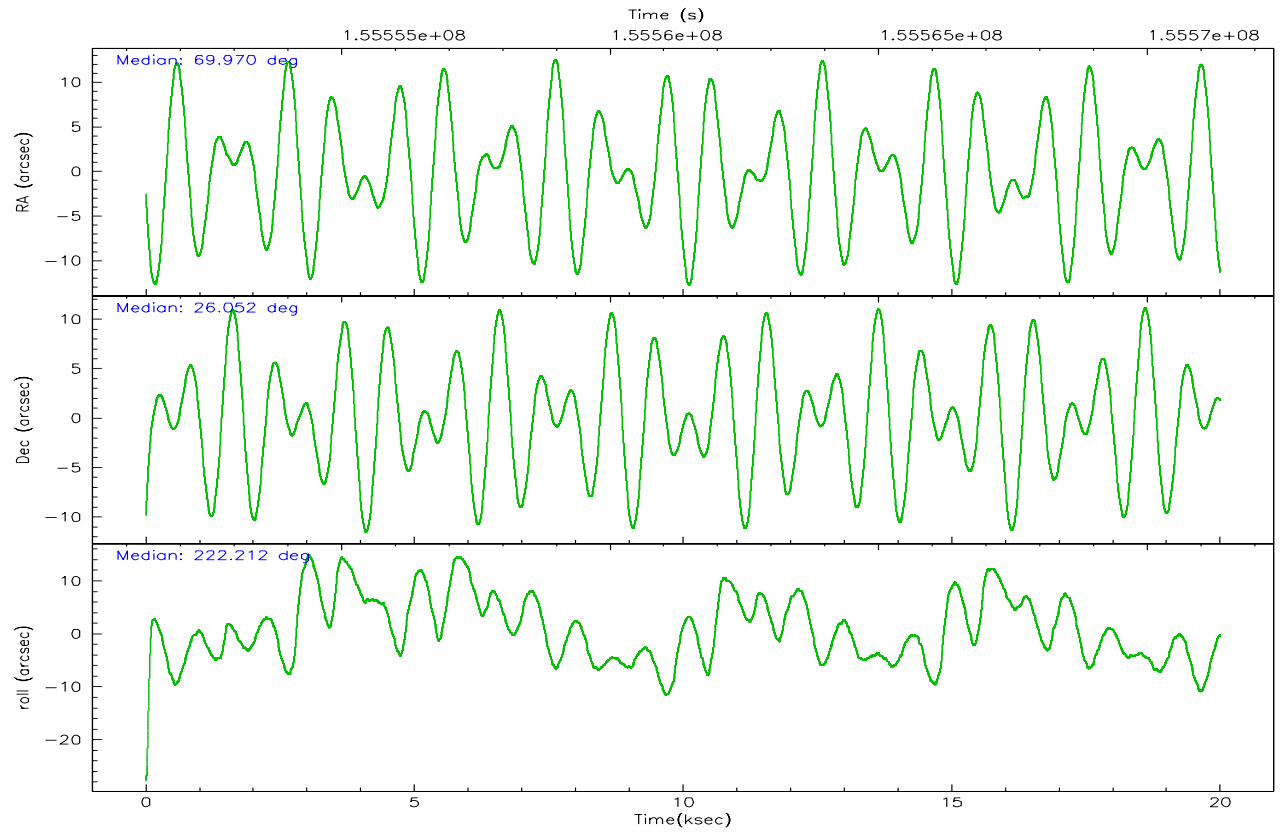
	ccd 0	ccd 1	ccd 2	ccd 3	ccd 6	ccd 7
grade 0 events	6014	5815	6043	6135	5438	3236
	5%	4%	4%	5%	4%	1%
grade 1 events	67	65	73	65	53	117
	0%	0%	0%	0%	0%	0%
grade 2 events	2982	3184	2878	2708	3029	15007
	2%	2%	2%	2%	2%	9%
grade 3 events	1490	1579	1425	1416	1428	2904
	1%	1%	1%	1%	1%	1%
grade 4 events	1409	1520	1349	1392	1460	2959
	1%	1%	1%	1%	1%	1%
grade 5 events	4675	5027	4672	5314	5645	10653
	4%	4%	3%	4%	4%	6%
grade 6 events	2496	2931	2355	2547	2944	36772
	2%	2%	1%	2%	2%	22%
grade 7 events	96975	97891	104758	102293	111199	90976
	83%	82%	84%	83%	84%	55%

2.2 Compared Parameters

Parameter	Planned	Actual	Parameter	Planned	Actual
Instrument	ACIS	ACIS	Obspar format version number	6	6
Detector	ACIS-012367	ACIS-012367	Obspar file type	PREDICTED	ACTUAL
Grating	NONE	NONE	Obspar update status	NONE	UPDATED
Data mode	FAINT	FAINT	Number of optional ACIS chips dropped	0	0
Observation mode	POINTING	POINTING	On-chip summing requested	N	N
Pointing RA	69.978910	69.96971482740982	Subarray requested	NONE	NONE
Pointing Dec	26.077365	26.05126255588814	Alternating exposures requested	N	N
Pointing Roll	221.998100	222.2108106309489	Primary exposure time	0.000000	3.2
SIM focus pos (mm)	-0.782348	-0.7809083437167272			
SIM defocus (mm)	0	0.001439871863259334			
SIM translation stage pos (mm)	-233.592463	-233.5874344608287			
SIM translation stage offset (mm)	0	-0.005018542100998502			
Observation start time	155551547.184000	155550612.96229			
Observation start date	2002-12-06T08:44:43	2002-12-06T08:30:12			
Observation end time	155571360.184000	155571675.17566			
Observation end date	2002-12-06T14:14:56	2002-12-06T14:21:15			
Read mode	TIMED	TIMED			

2.3 Aspect



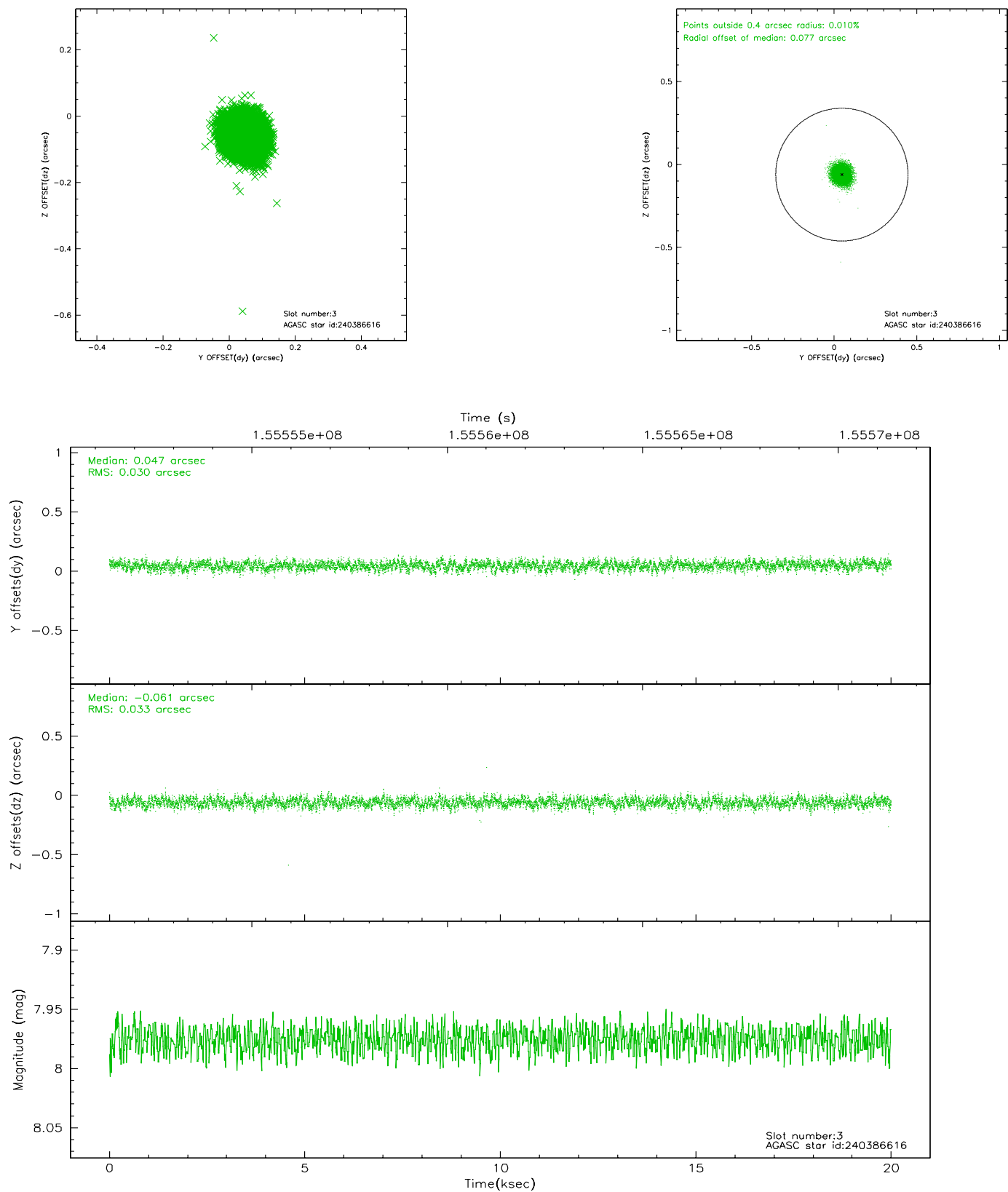


Slot Statistics

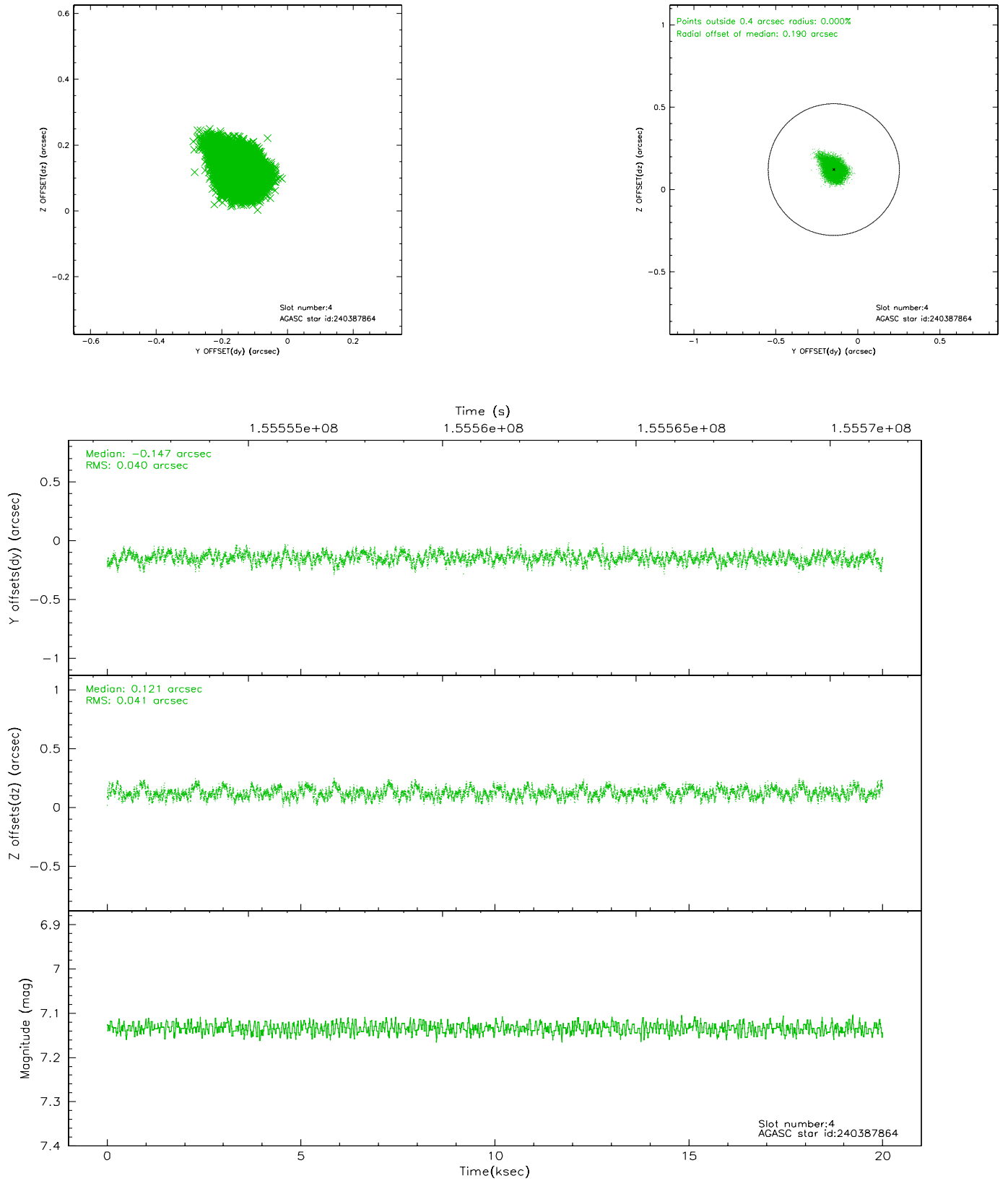
slot	status	id	mag	n_pts	med_dy	med_dz	dr1	dr2	ra	dec	mean_y	mean_z
0	FID	ACIS-I-1	7.25	4878	-0.014	0.033	0.012	0.036	0.000000	0.000000	937.19	-830.35
1	FID	ACIS-I-5	7.24	4878	-0.035	0.045	0.008	0.014	0.000000	0.000000	-1810.80	1067.10
2	FID	ACIS-I-6	7.26	4877	-0.042	-0.009	0.015	0.029	0.000000	0.000000	402.55	1711.72
3	GUIDE	240386616	7.98	9753	0.047	-0.061	0.047	0.074	70.283534	25.992764	-528.91	886.06
4	GUIDE	240387864	7.13	9755	-0.147	0.121	0.061	0.096	69.352478	25.727369	2349.99	-425.33
5	OMITTED		0.00	0	0.000	0.000	0.000	0.000	0.000000	0.000000	0.00	0.00
6	GUIDE	240391800	6.58	9755	0.008	-0.050	0.058	0.100	69.846451	25.218273	2390.78	2010.59
7	GUIDE	240389520	8.07	9752	0.083	-0.015	0.050	0.081	70.770976	26.243075	-2304.06	1263.47

2.4 Star Slots

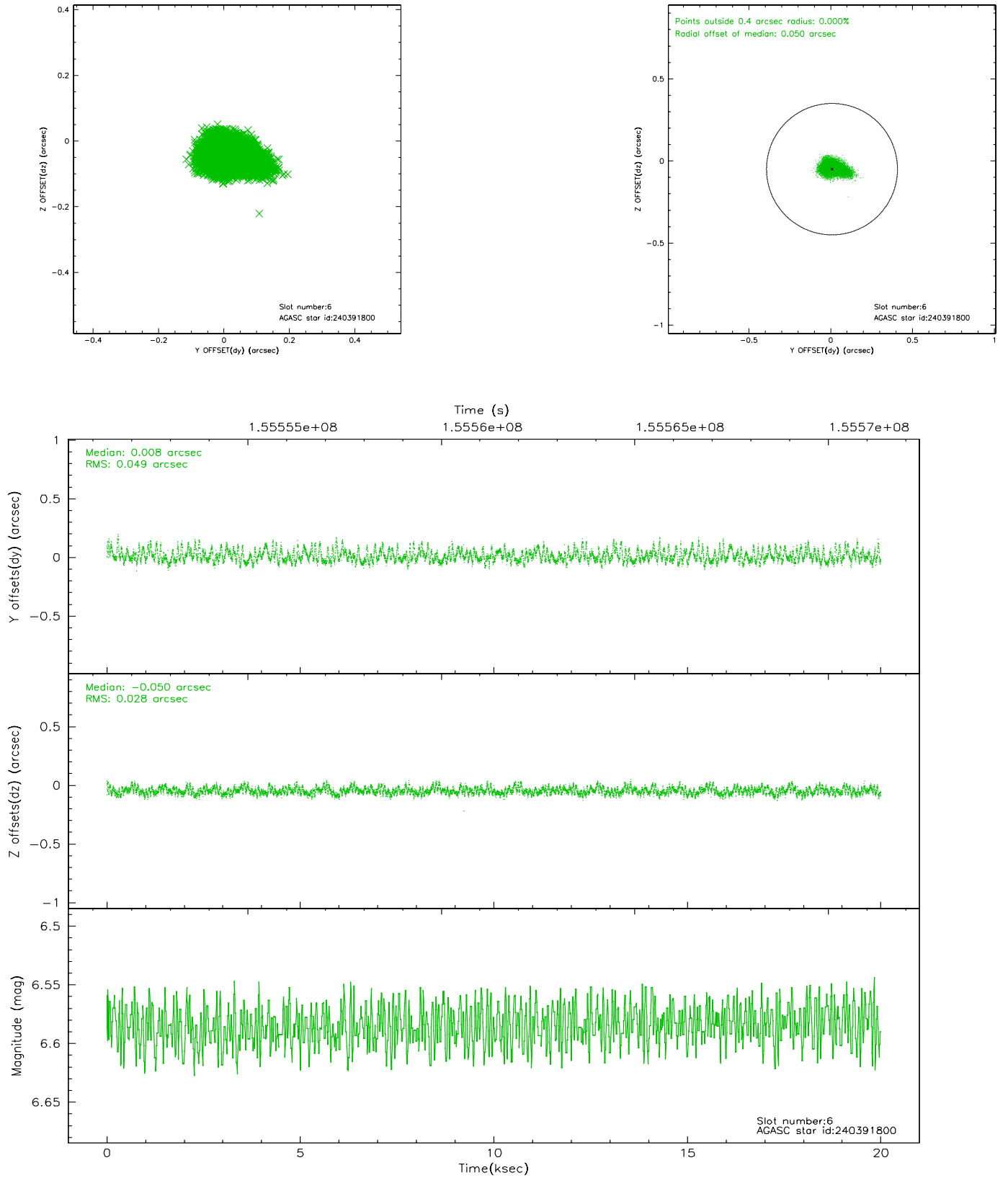
2.4.1 Slot 3



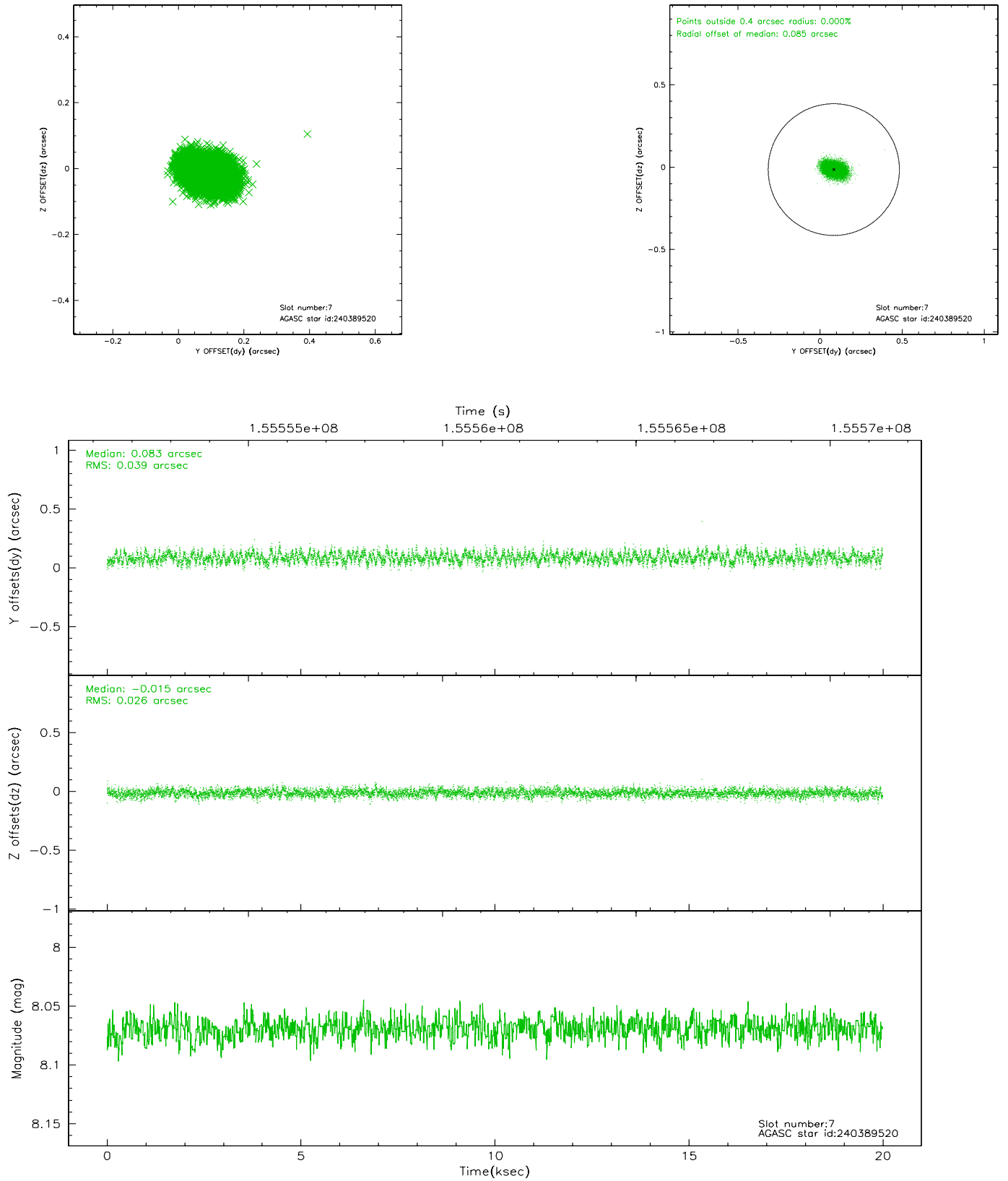
2.4.2 Slot 4



2.4.3 Slot 6

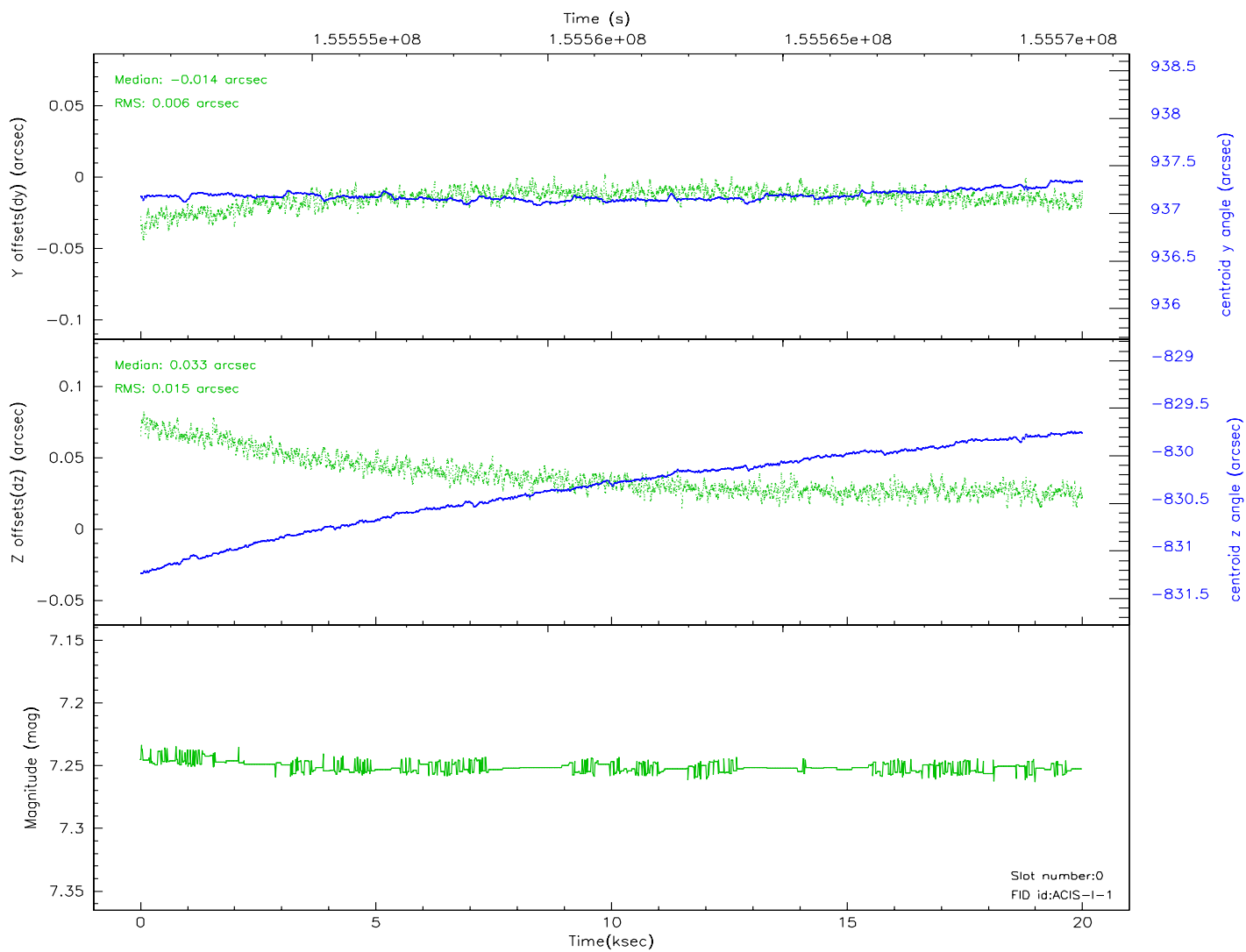
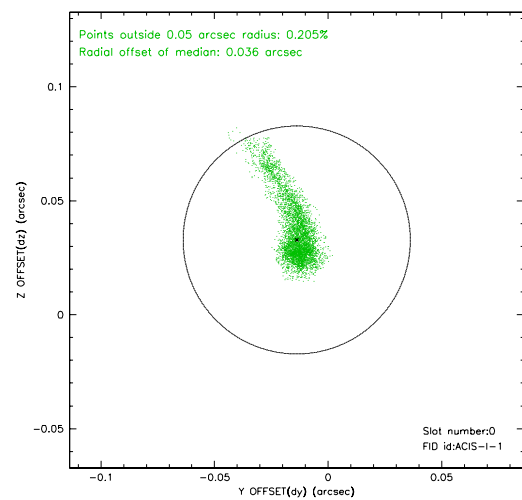
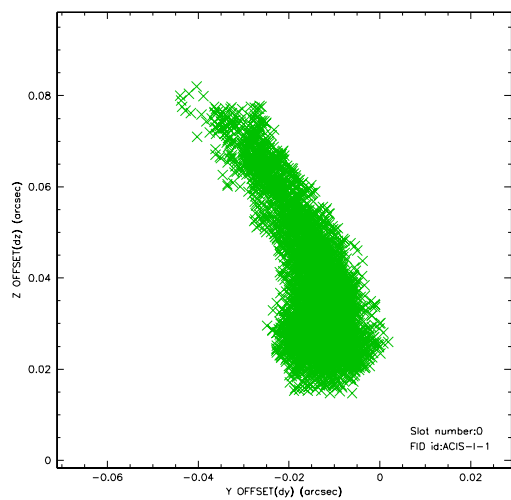


2.4.4 Slot 7

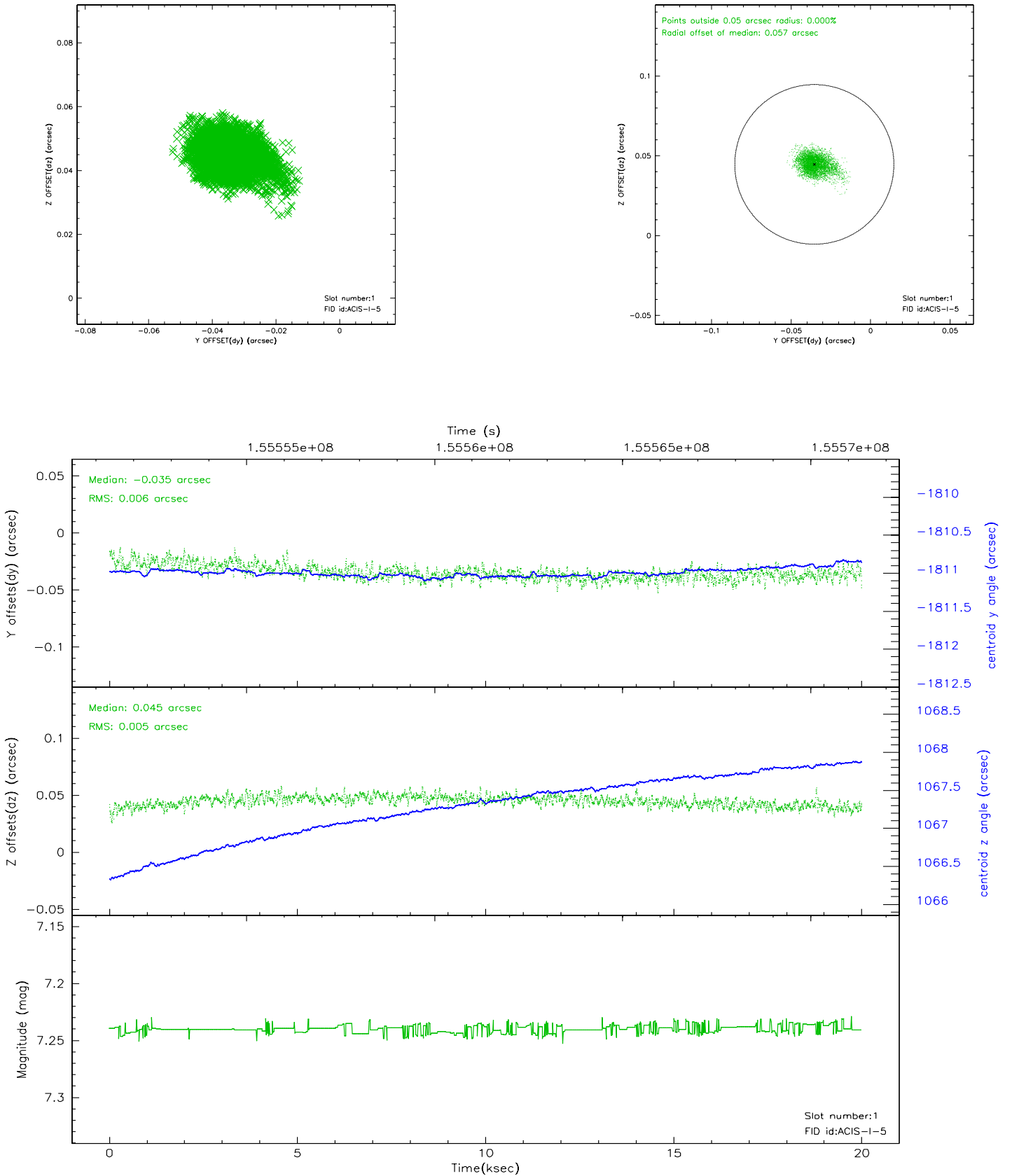


2.5 FID Slots

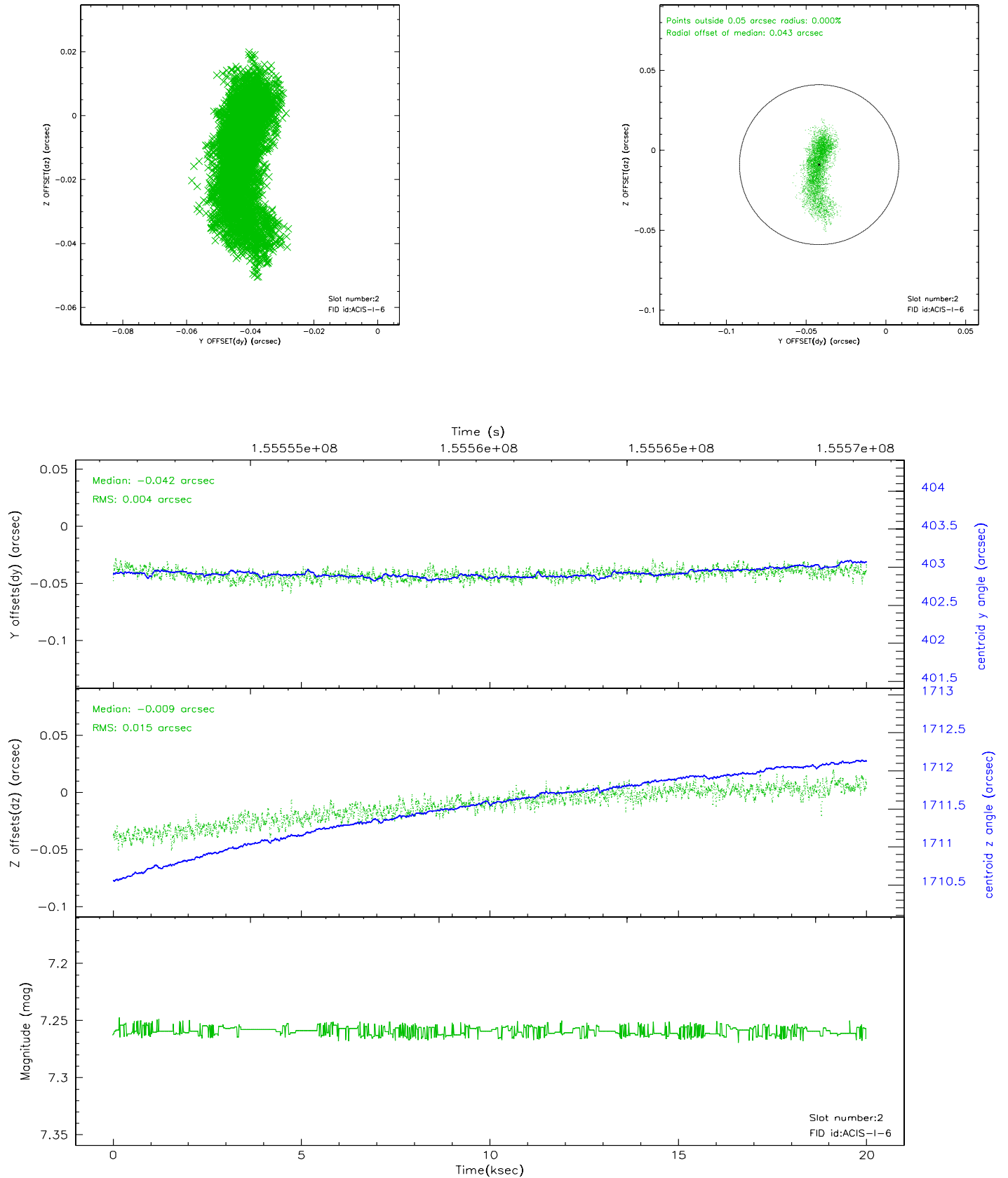
2.5.1 Slot 0



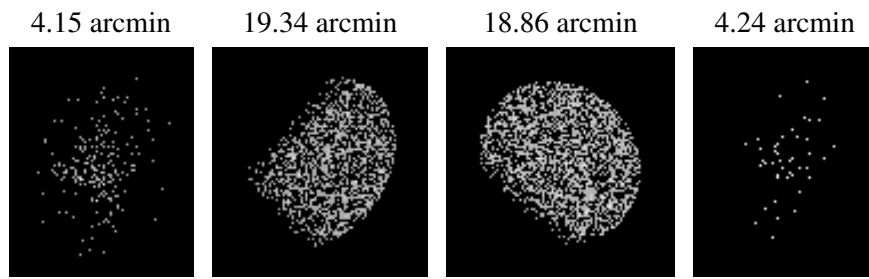
2.5.2 Slot 1



2.5.3 Slot 2



3 Point Sources



A Summary

A.1 Status

V&V Scientist	Jen Lauer
V&V Date (YYYY-MM-DD)	2010.10.01
V&V Edition	2
V&V Disposition and Status	OK
V&V Charge Time	19.564

A.2 Comments

The guide star in slot 5 was manually excluded from the processing due to poor data quality.