

V&V Reference Report

L2 ASCDS Version : 7.6.9

Observation 2560 - L2 Version 3
Chandra X-Ray Center

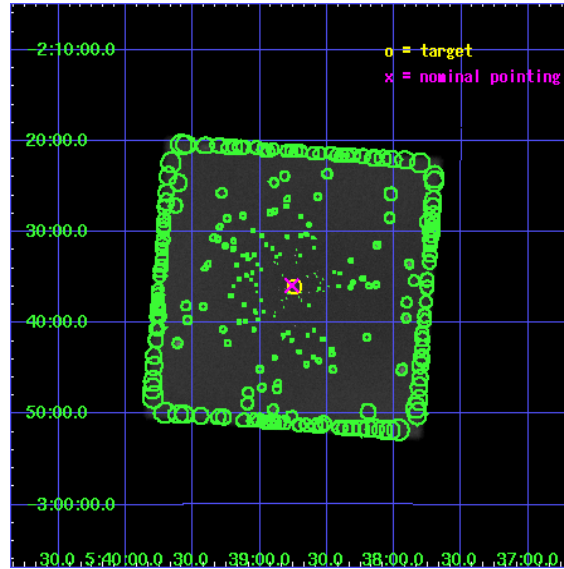
L2 Processing Date : Nov 21 2007

Contents

1	Front	2
2	OBI	3
2.1	OBI	3
2.1.1	Images	3
2.1.2	Parameters	4
2.1.3	Events	4
2.2	Compared Parameters	5
2.3	Aspect	6
2.4	Star Slots	9
2.4.1	Slot 3	9
2.4.2	Slot 4	10
2.4.3	Slot 5	11
2.4.4	Slot 6	12
2.4.5	Slot 7	13
2.5	FID Slots	14
2.5.1	Slot 0	14
2.5.2	Slot 1	15
2.5.3	Slot 2	16
3	Point Sources	17
A	Summary	18
A.1	Status	18
A.2	Comments	18

1 Front

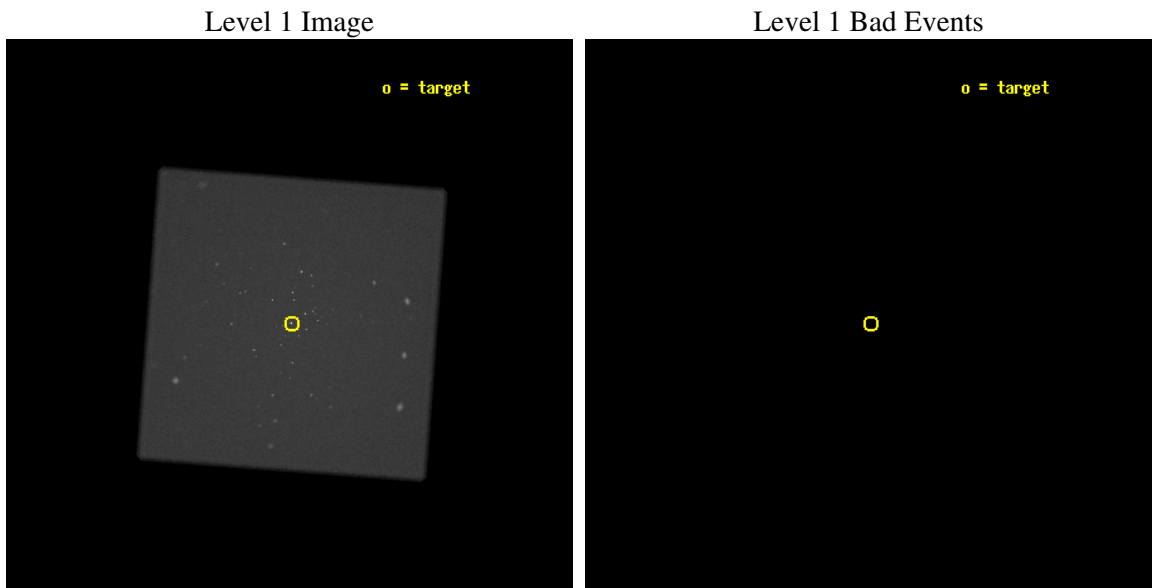
seq_num	200168
obs_id	2560
title	X-RAYS FROM BROWN DWARFS IN THE SIGMA ORIONIS CLUSTER
observer	Dr. Scott Wolk
object	SIGMA ORIONIS
ra_targ	84.686667
dec_targ	-2.600056
ra_nom	84.690431879601
dec_nom	-2.5981948102333
roll_nom	49.296194734188
revision	3
ontime	98371.560344875
livetime	97435.168401476
l2events	4656257



2 OBI

2.1 OBI

2.1.1 Images



2.1.2 Parameters

obi_num	0
ascdsver	7.6.11.2
caldbver	3.4.1
date	2007-11-22T00:40:35
revision	3

sched_exp_time	98500.000000
ontime	98371.560344875
l1events	6644119

2.1.3 Events

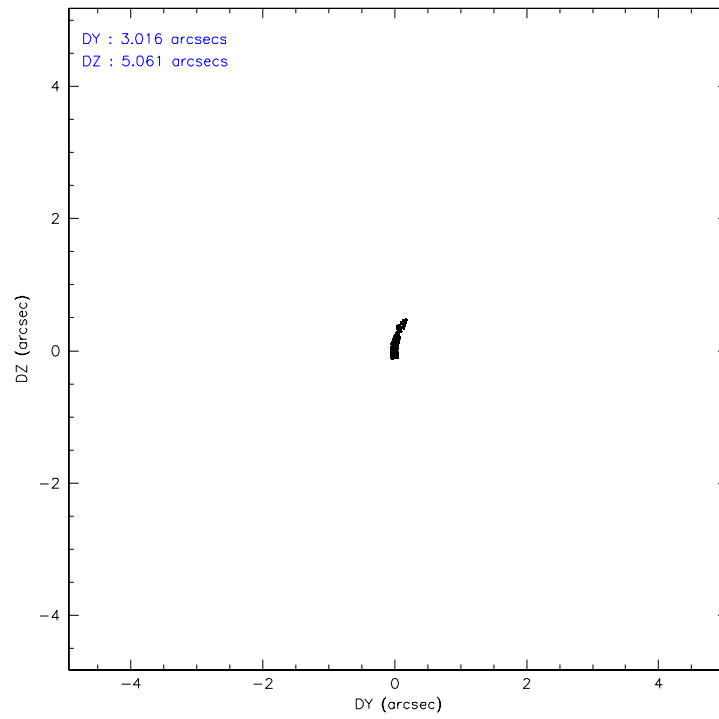
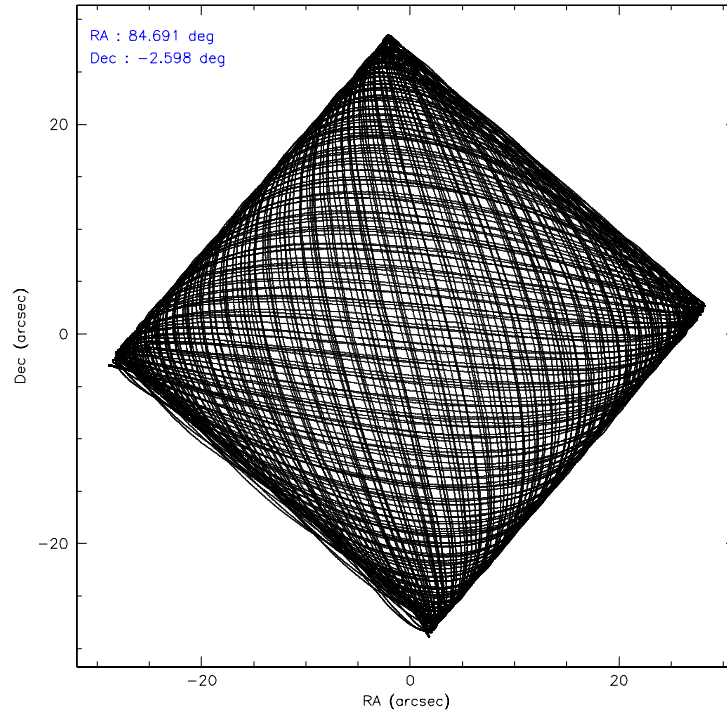
Level 1 Events

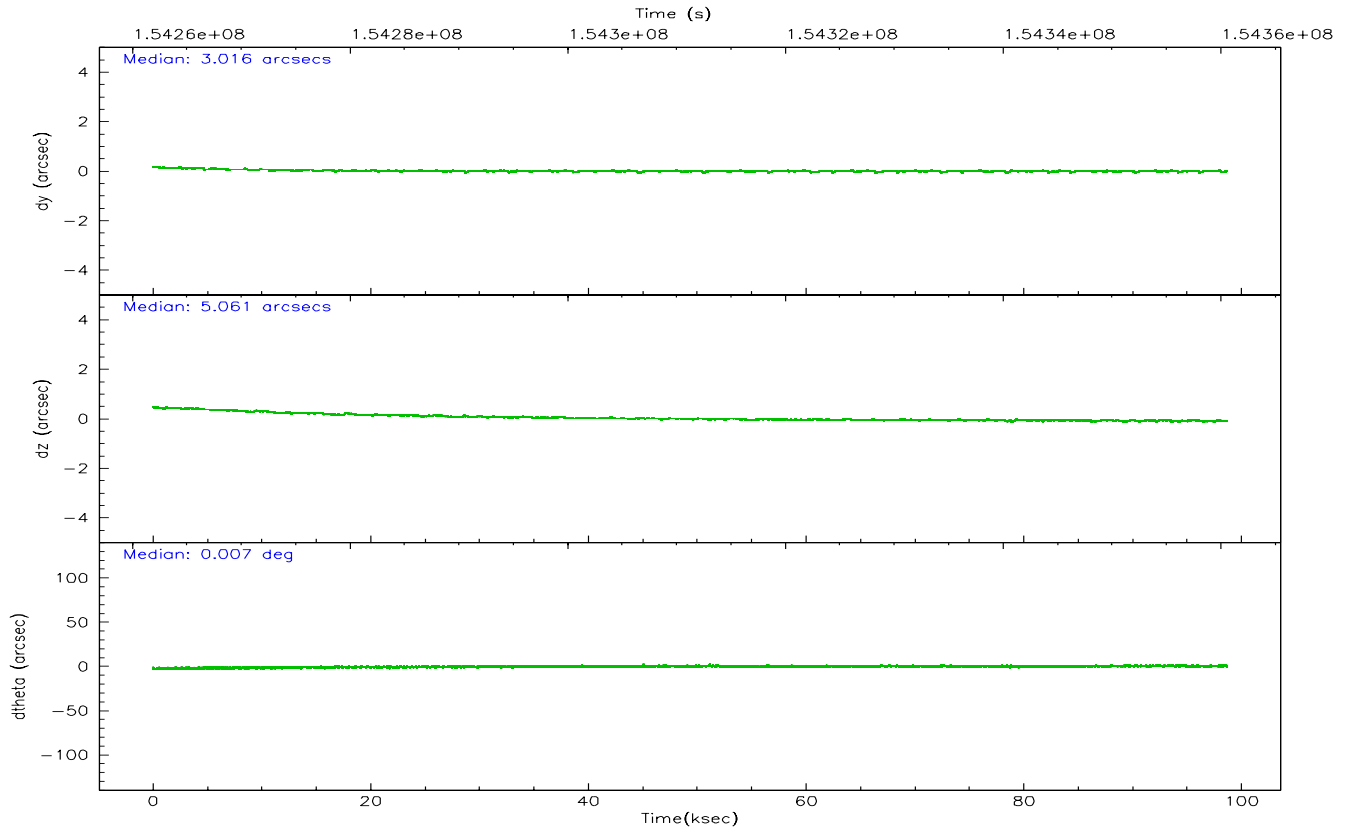
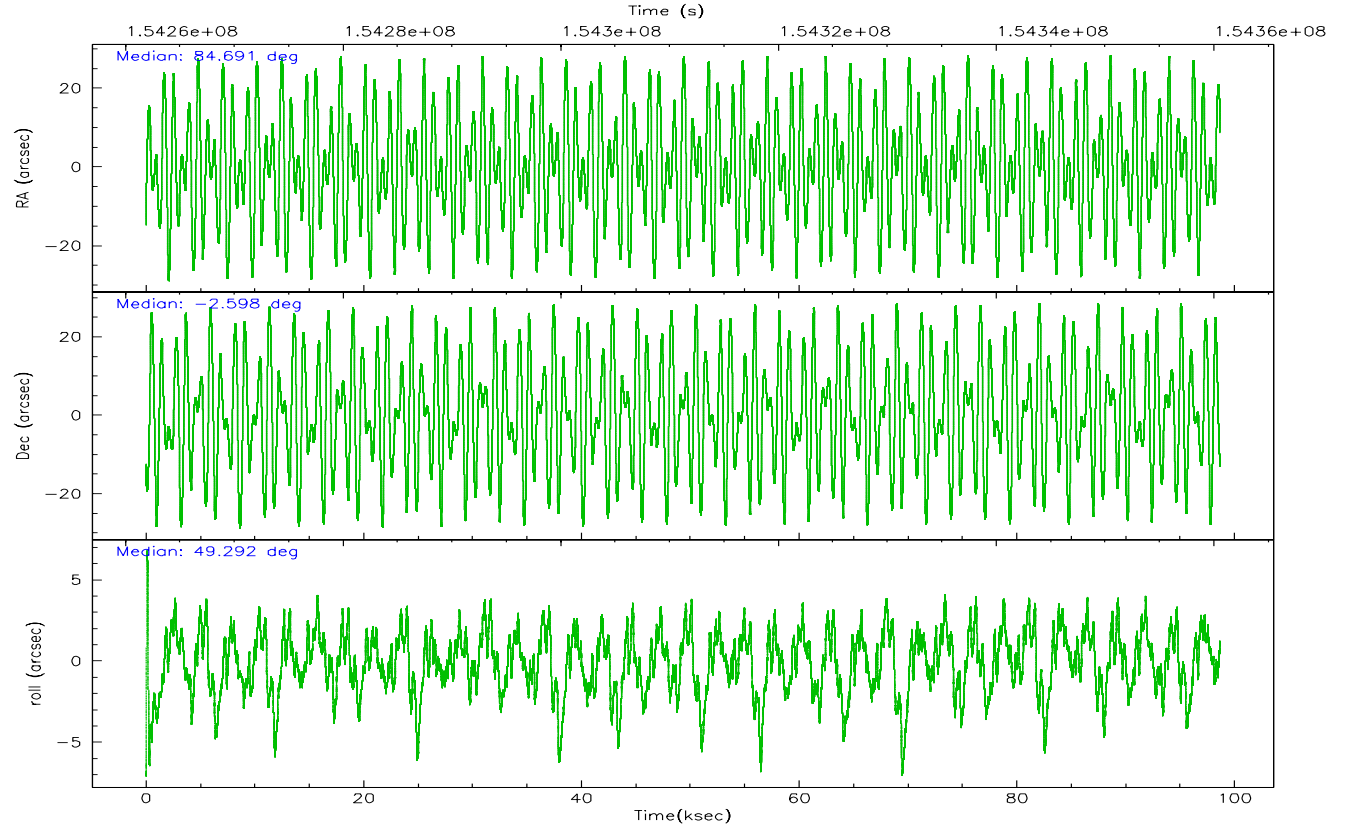
	segment 0
level 1 events	6644119
rejected events	7789
rejected %	0%

2.2 Compared Parameters

Parameter	Planned	Actual	Parameter	Planned	Actual
Instrument	HRC	HRC	Obspar format version number	6	6
Detector	HRC-I	HRC-I	Obspar file type	PREDICTED	ACTUAL
Grating	NONE	NONE	Obspar update status	NONE	UPDATED
Data mode	OBSERVING	OBSERVING			
Observation mode	POINTING	POINTING			
Pointing RA	84.685978	84.69043187960061			
Pointing Dec	-2.624924	-2.598194810233349			
Pointing Roll	49.391483	49.29619473418752			
SIM focus pos (mm)	-1.040293	-1.038866356238299			
SIM defocus (mm)	0	0.001426264420575141			
SIM translation stage pos (mm)	126.985494	126.9854943052878			
SIM translation stage offset (mm)	0	-5.413686238853188e-06			
Observation start time	154262084.184000	154261135.23355			
Observation start date	2002-11-21T10:33:40	2002-11-21T10:18:55			
Observation end time	154360584.184000	154361559.61273			
Observation end date	2002-11-22T13:55:20	2002-11-22T14:12:39			

2.3 Aspect



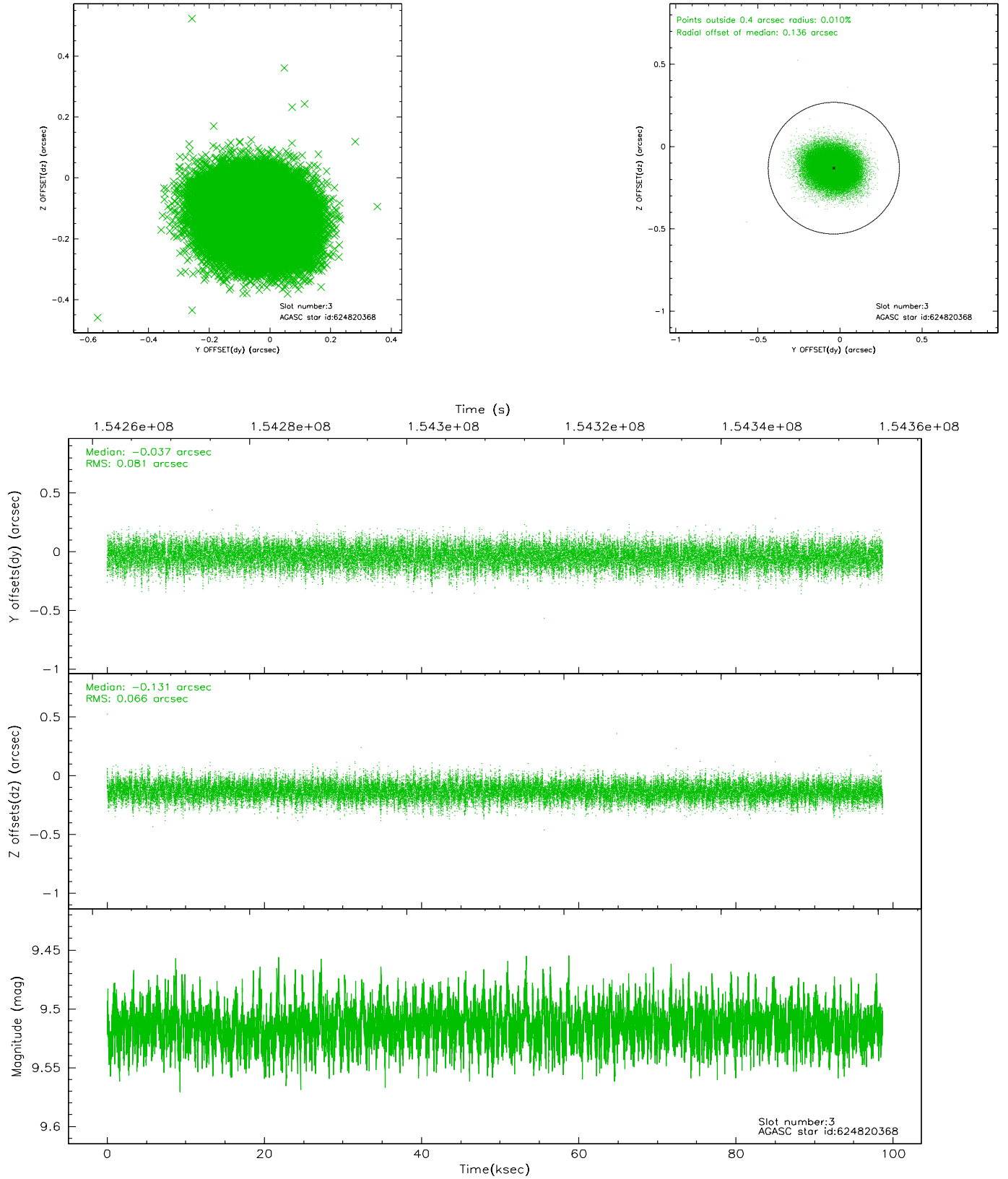


Slot Statistics

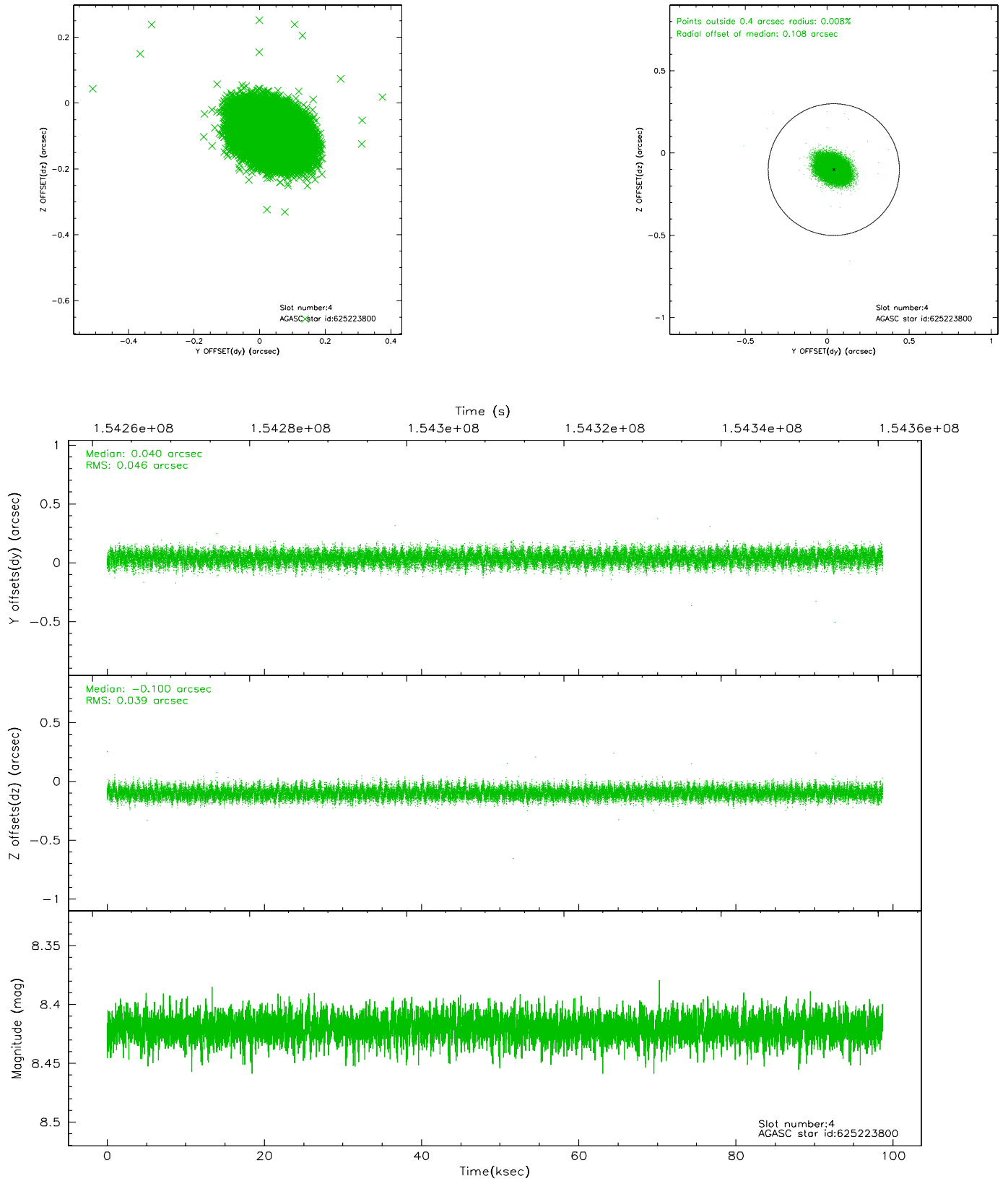
slot	status	id	mag	n_pts	med_dy	med_dz	dr1	dr2	ra	dec	mean_y	mean_z
0	FID	HRC-I-1	6.98	24068	0.001	0.037	0.008	0.015	0.000000	0.000000	-758.47	-1292.94
1	FID	HRC-I-2	7.02	24068	0.076	-0.043	0.009	0.015	0.000000	0.000000	854.21	-1294.60
2	FID	HRC-I-3	7.07	24066	0.042	-0.084	0.007	0.012	0.000000	0.000000	-1186.93	1011.44
3	GUIDE	624820368	9.51	48095	-0.037	-0.131	0.111	0.180	84.520771	-1.858956	1706.40	2246.63
4	GUIDE	625223800	8.42	48127	0.040	-0.100	0.064	0.105	84.220234	-2.967062	-2025.09	469.62
5	GUIDE	625354096	6.78	48132	0.022	0.088	0.076	0.122	85.155401	-2.825234	551.09	-1750.33
6	GUIDE	625352456	9.19	48110	-0.003	0.027	0.080	0.131	84.776134	-2.002015	1913.55	1214.00
7	GUIDE	625354104	8.51	48043	-0.020	0.116	0.106	0.160	84.980929	-3.330492	-1238.26	-2457.61

2.4 Star Slots

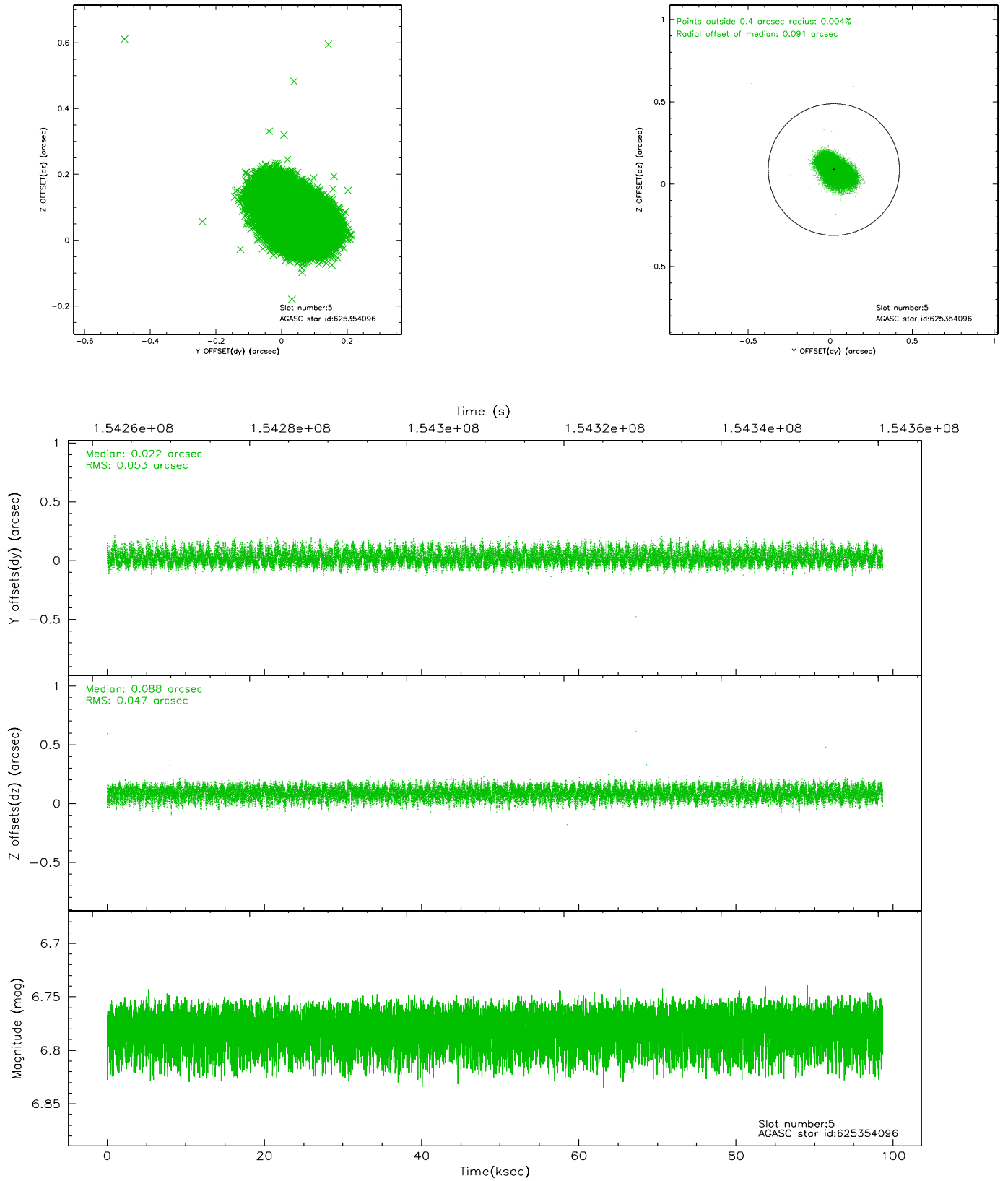
2.4.1 Slot 3



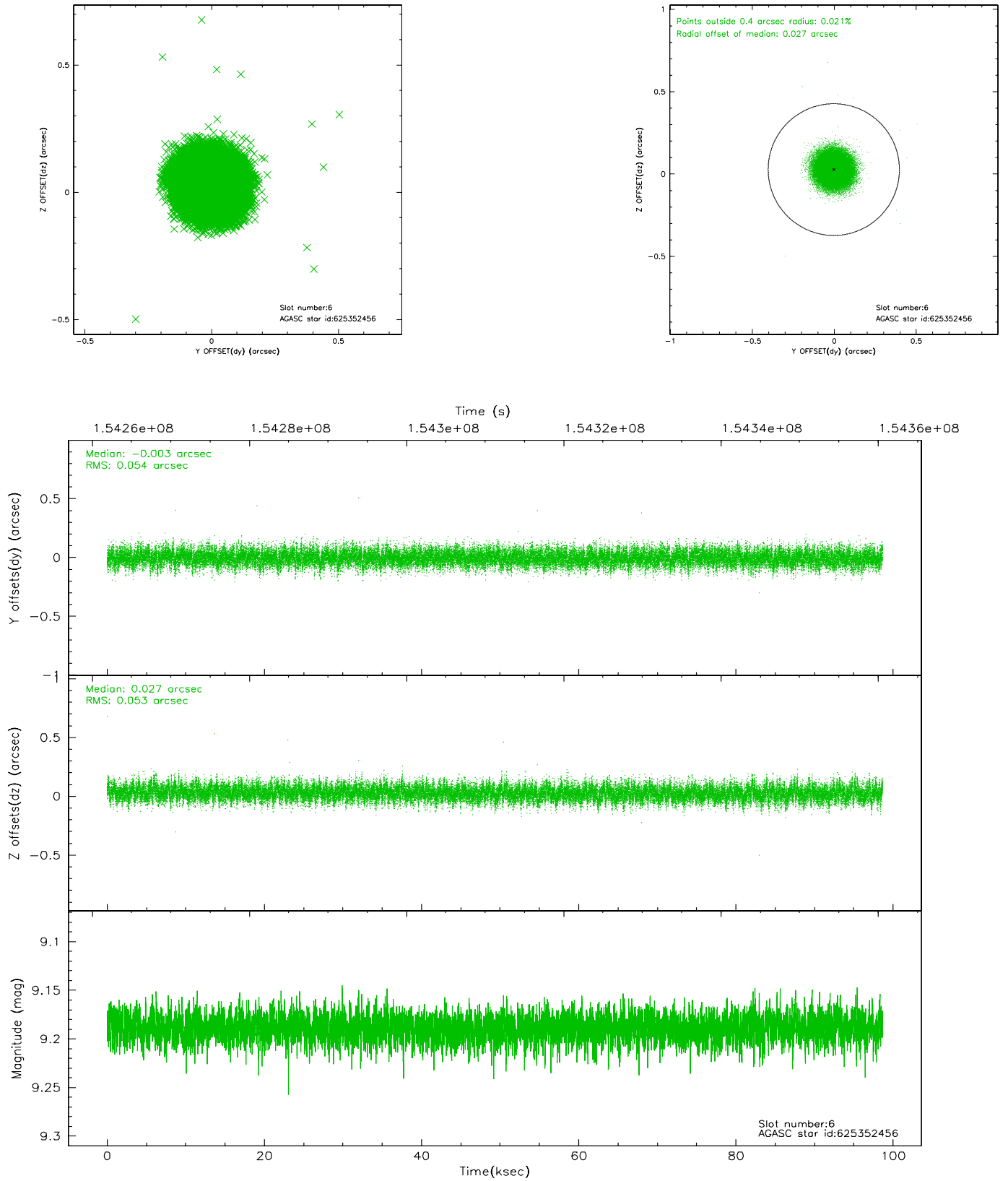
2.4.2 Slot 4



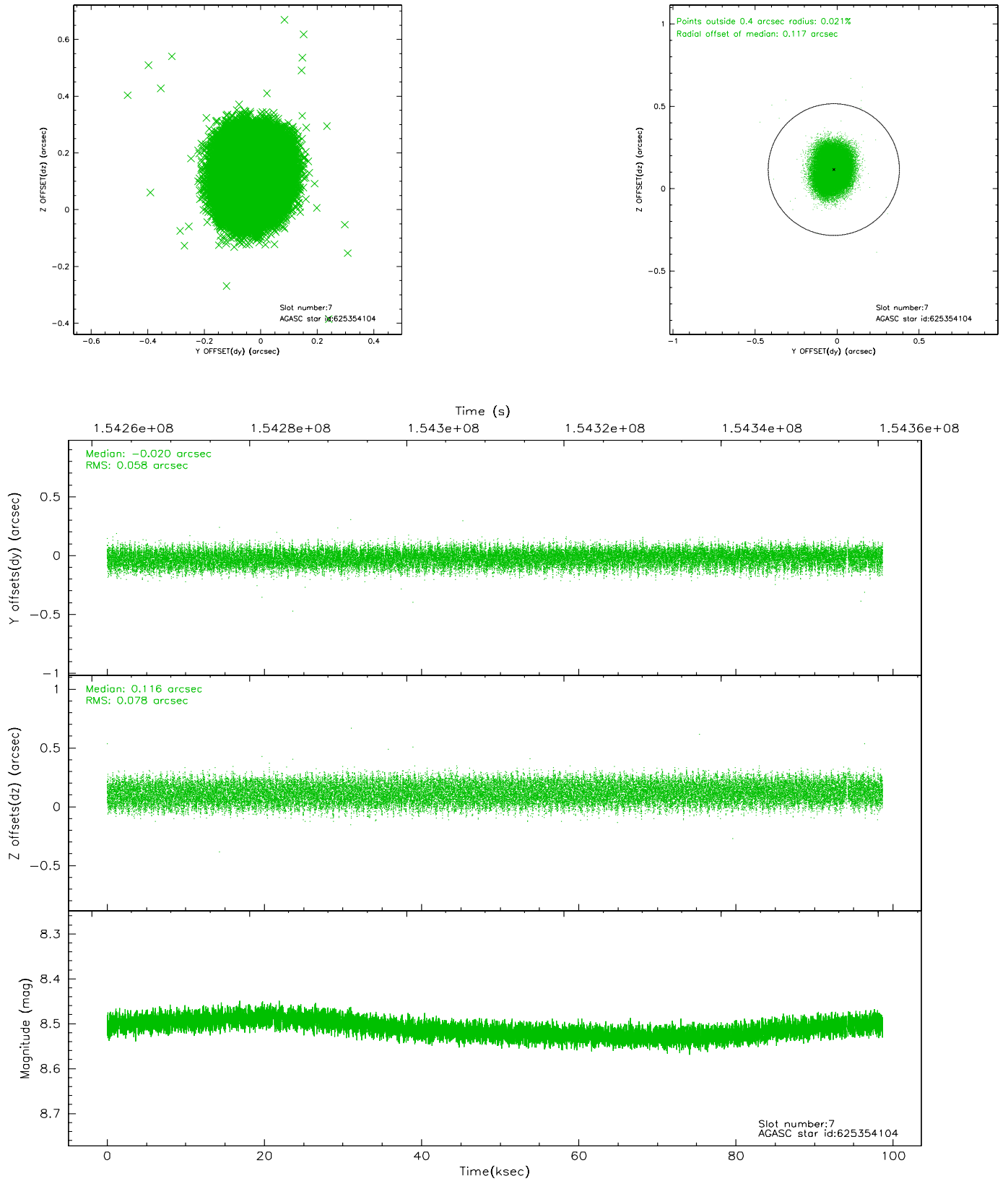
2.4.3 Slot 5



2.4.4 Slot 6

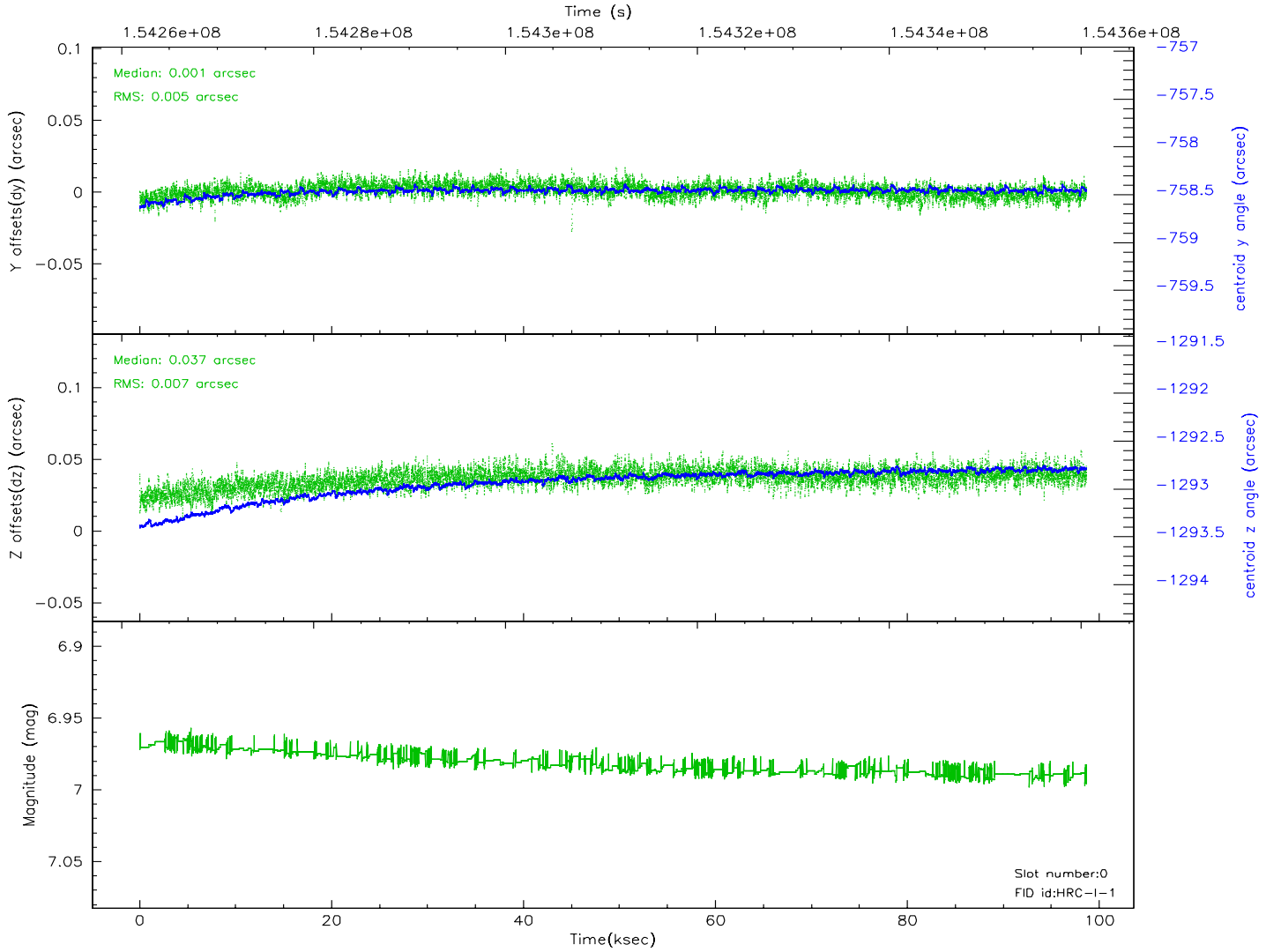
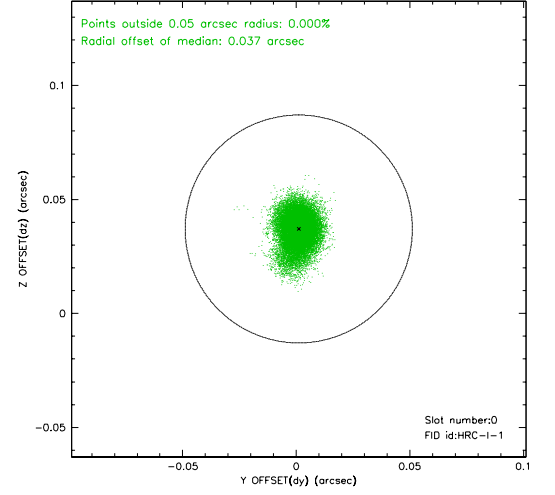
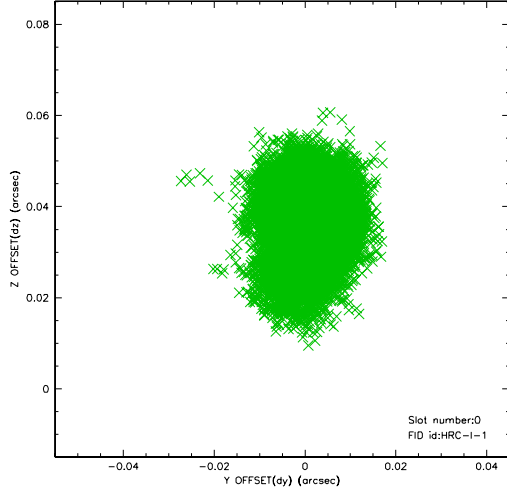


2.4.5 Slot 7

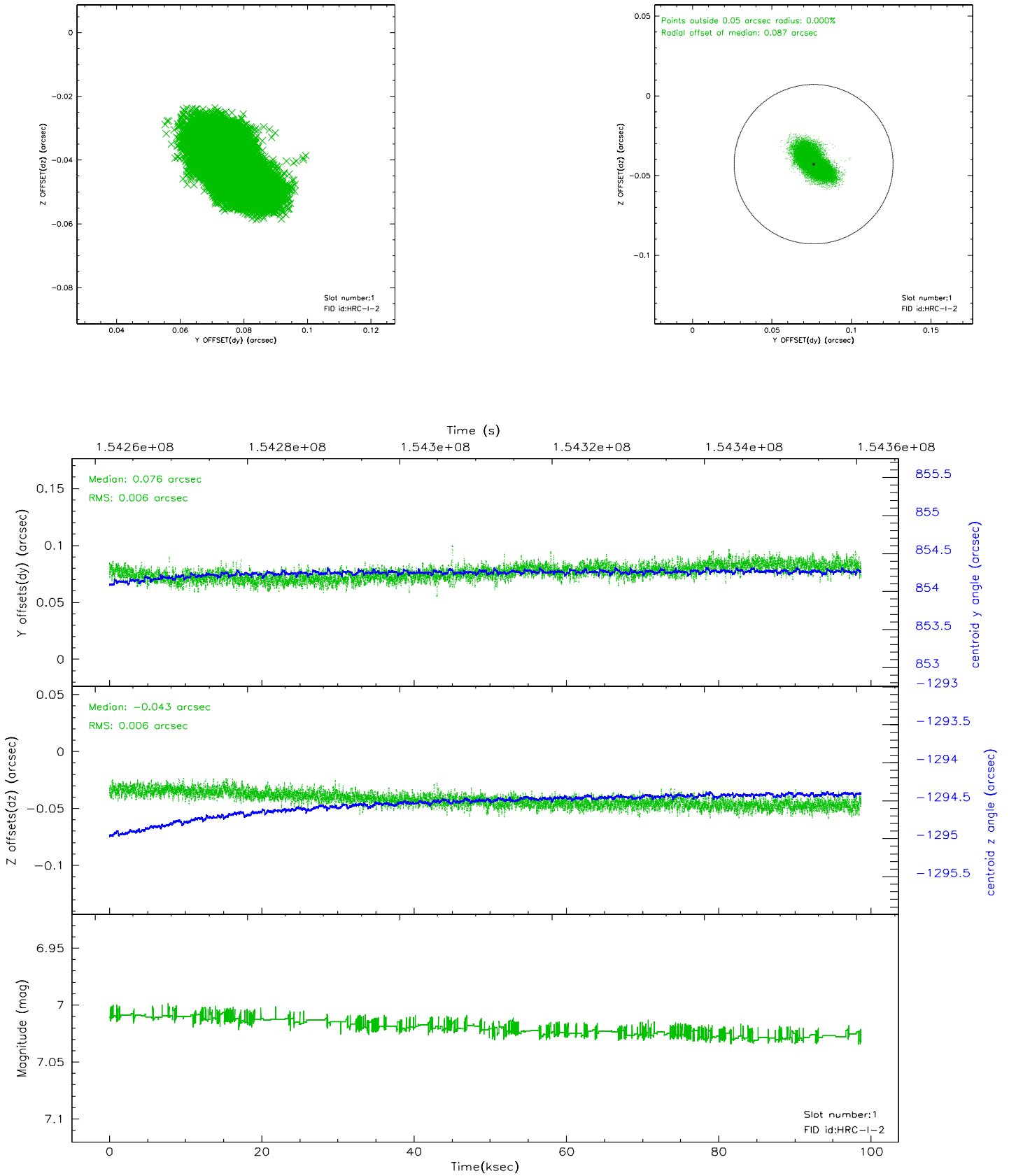


2.5 FID Slots

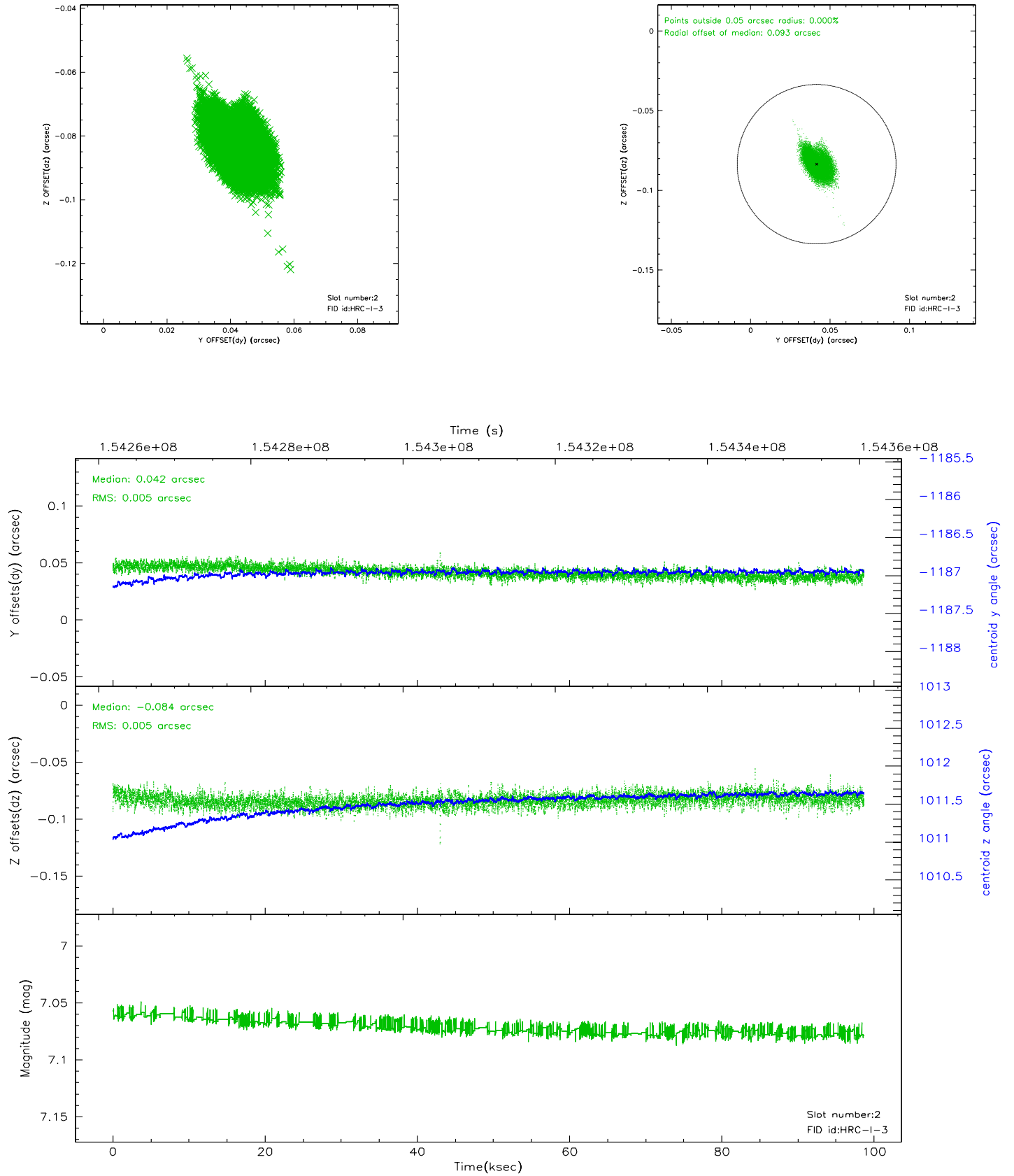
2.5.1 Slot 0



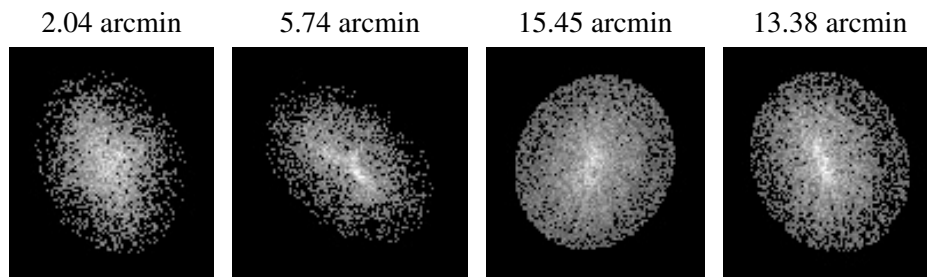
2.5.2 Slot 1



2.5.3 Slot 2



3 Point Sources



A Summary

A.1 Status

V&V Scientist	Beth Sundheim
V&V Date (YYYY-MM-DD)	2007.12.04
V&V Edition	1
V&V Disposition and Status	OK
V&V Charge Time	98.371

A.2 Comments

The current observation has been reprocessed as part of Repro III ('C' supplement) the purpose of which is to update all HRC-I ObsIDs since Jan 2000 to the latest calibrations available for that configuration. Specifically, we are updating the DEGAP solution and the Gain Maps applied. For more information see the Repro IIIC web page at:

<http://asc.harvard.edu/cda/repro3.html#IIIC>

and the associated links.