

V&V Reference Report

L2 ASCDS Version : 8.4.5

Observation 2283 - L2 Version 3
Chandra X-Ray Center

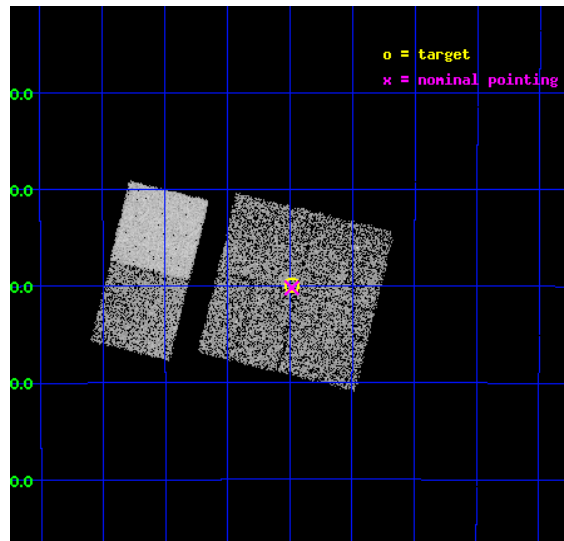
L2 Processing Date : Sep 20 2012

Contents

1	Front	2
2	OBI	3
2.1	OBI	3
2.1.1	Images	3
2.1.2	Bias	3
2.1.3	Parameters	4
2.1.4	Events	4
2.2	Compared Parameters	5
2.3	Aspect	6
2.4	Star Slots	9
2.4.1	Slot 3	9
2.4.2	Slot 4	10
2.4.3	Slot 5	11
2.4.4	Slot 6	12
2.4.5	Slot 7	13
2.5	FID Slots	14
2.5.1	Slot 0	14
2.5.2	Slot 1	15
2.5.3	Slot 2	16
A	Summary	17
A.1	Status	17
A.2	Comments	17

1 Front

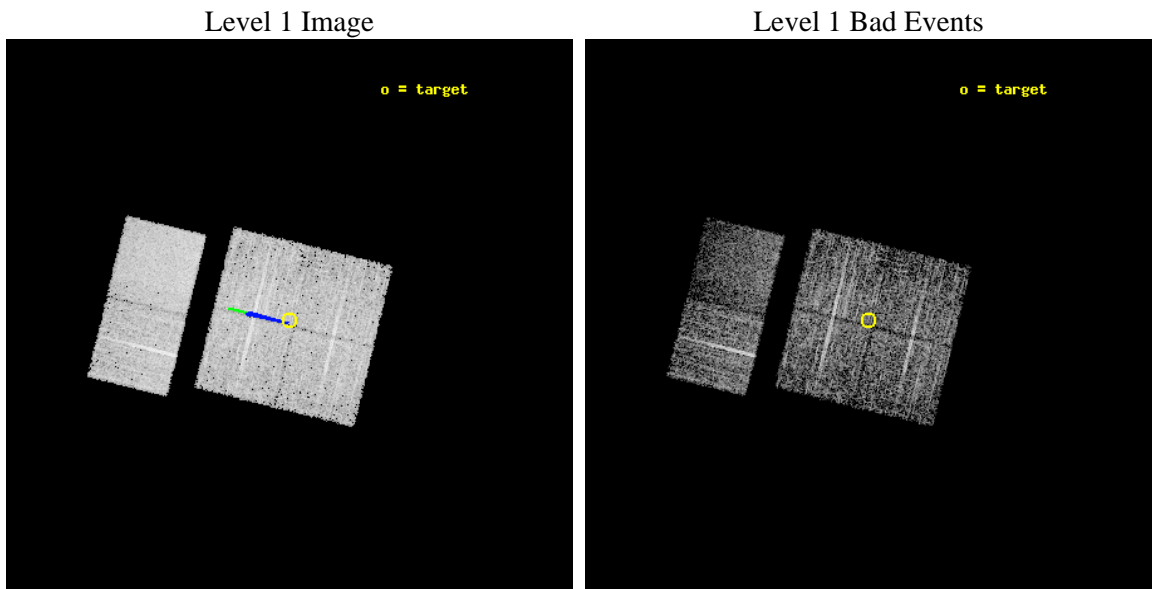
seq_num	900110	Sequence number
obs_id	2283	Observation id
title	CHANDRA SURVEY OF THE GALACTIC RIDGE AROUND THE MILKY WAY CENTER	P
observer	Prof. Q. Daniel Wang	Principal investigator
object	GCS 27	Source name
dtcycle	0	
cycle	P	events from which exps? Prim/Second/Both
ra_targ	265.7468	Observer's specified target RA [deg]
dec_targ	-29.4987	Observer's specified target Dec [deg]
ra_nom	265.74590634347	Nominal RA [deg]
dec_nom	-29.503360413873	Nominal Dec [deg]
roll_nom	283.80725442628	Nominal Roll [deg]
revision	3	Processing version of data
ontime	11760.000010937	Sum of GTIs [s]
livetime	11611.087809777	Livetime [s]
ontime0	11760.000010937	Sum of GTIs [s]
ontime1	11760.000010937	Sum of GTIs [s]
ontime2	11760.000010937	Sum of GTIs [s]
ontime3	11760.000010937	Sum of GTIs [s]
ontime6	11760.000010937	Sum of GTIs [s]
ontime7	11760.000010937	Sum of GTIs [s]
l2events	47067	Number of level 2 events



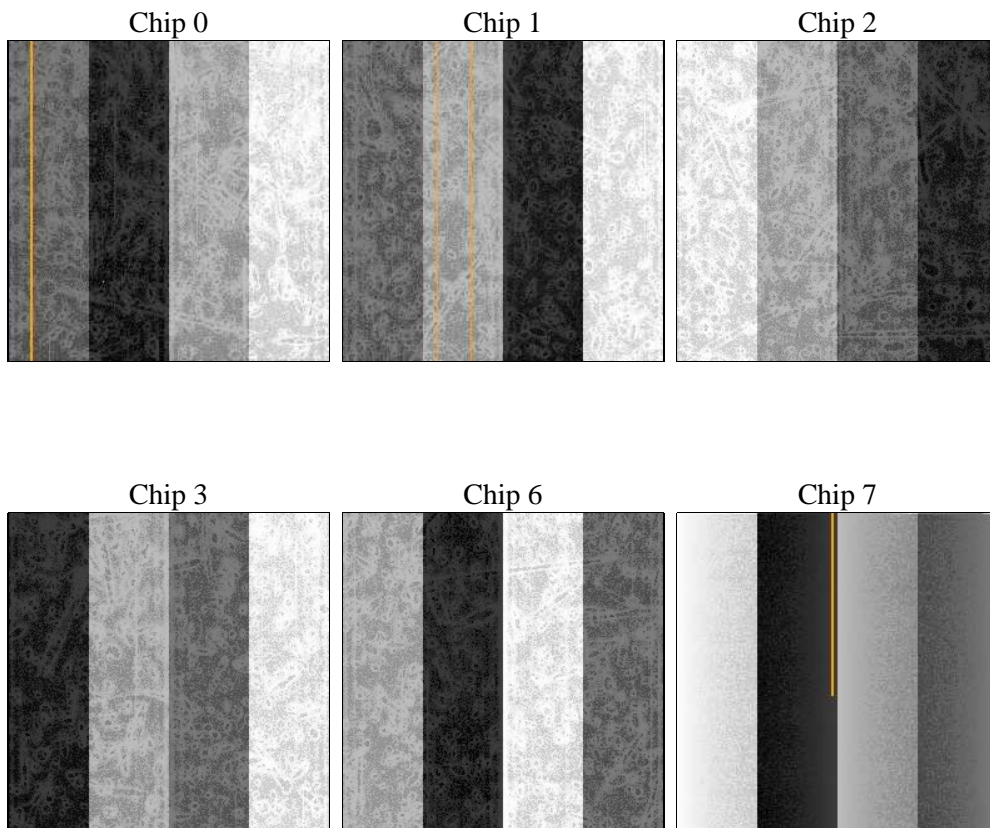
2 OBI

2.1 OBI

2.1.1 Images



2.1.2 Bias



2.1.3 Parameters

obi_num	0	Obi number	sched_exp_time	12000.000000	[s] Scheduled observation exposure time
ascdsver	8.4.5	Processing system revision	ontime	11760.000010937	Sum of GTIs [s]
caldsver	4.5.1.1	 	ontime0	11760.000010937	Sum of GTIs [s]
date	2012-09-20T19:10:25	Date and time of file creation	ontime1	11760.000010937	Sum of GTIs [s]
revision	3	Processing version of data	ontime2	11760.000010937	Sum of GTIs [s]
			ontime3	11760.000010937	Sum of GTIs [s]
			ontime6	11760.000010937	Sum of GTIs [s]
			ontime7	11760.000010937	Sum of GTIs [s]
			l1events	193736	Number of level 1 events

2.1.4 Events

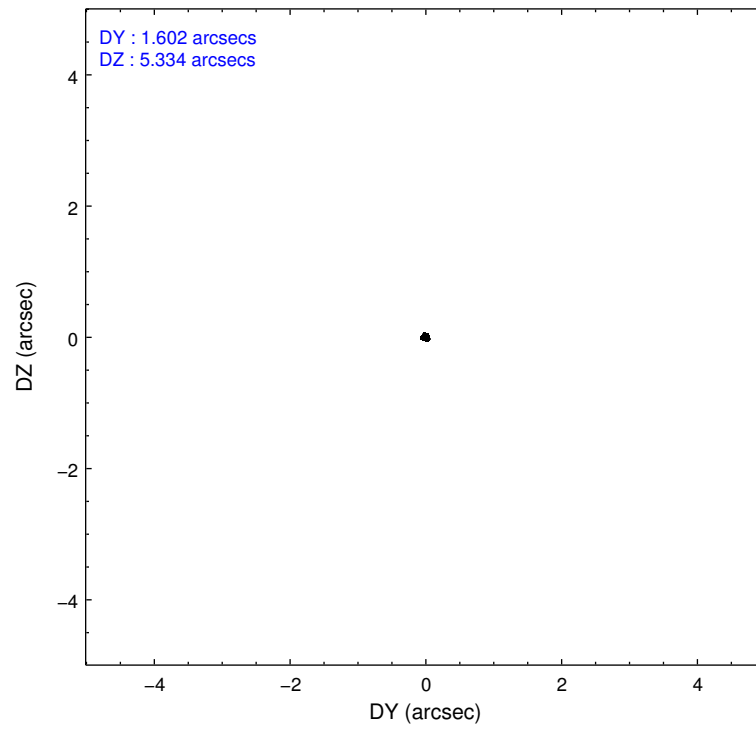
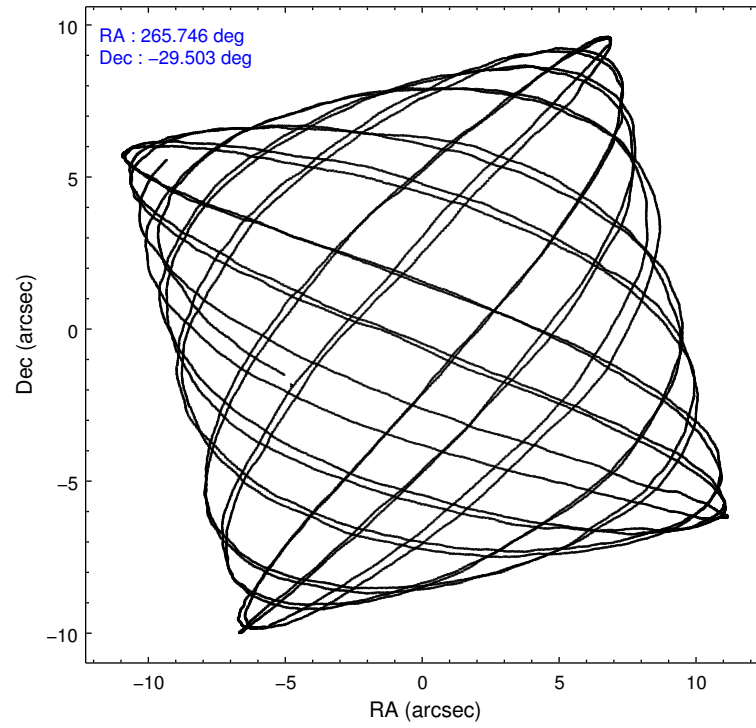
	ccd 0	ccd 1	ccd 2	ccd 3	ccd 6	ccd 7		ccd 0	ccd 1	ccd 2	ccd 3	ccd 6	ccd 7
level 1 events	29019	28614	30798	32686	33570	39049	grade 0 events	2730	2458	3053	2541	3077	2211
rejected events	23354	23239	24828	27197	27006	17937		9%	8%	9%	7%	9%	5%
rejected %	80%	81%	80%	83%	80%	45%	grade 1 events	31	19	16	27	28	36
								0%	0%	0%	0%	0%	0%
							grade 2 events	1145	1097	1080	1083	1286	4375
								3%	3%	3%	3%	3%	11%
							grade 3 events	471	454	461	456	585	1950
								1%	1%	1%	1%	1%	4%
							grade 4 events	460	455	481	480	509	2042
								1%	1%	1%	1%	1%	5%
							grade 5 events	1185	1353	1078	1423	1469	4268
								4%	4%	3%	4%	4%	10%
							grade 6 events	862	912	896	930	1107	10539
								2%	3%	2%	2%	3%	26%
							grade 7 events	22135	21866	23733	25746	25509	13628
								76%	76%	77%	78%	75%	34%

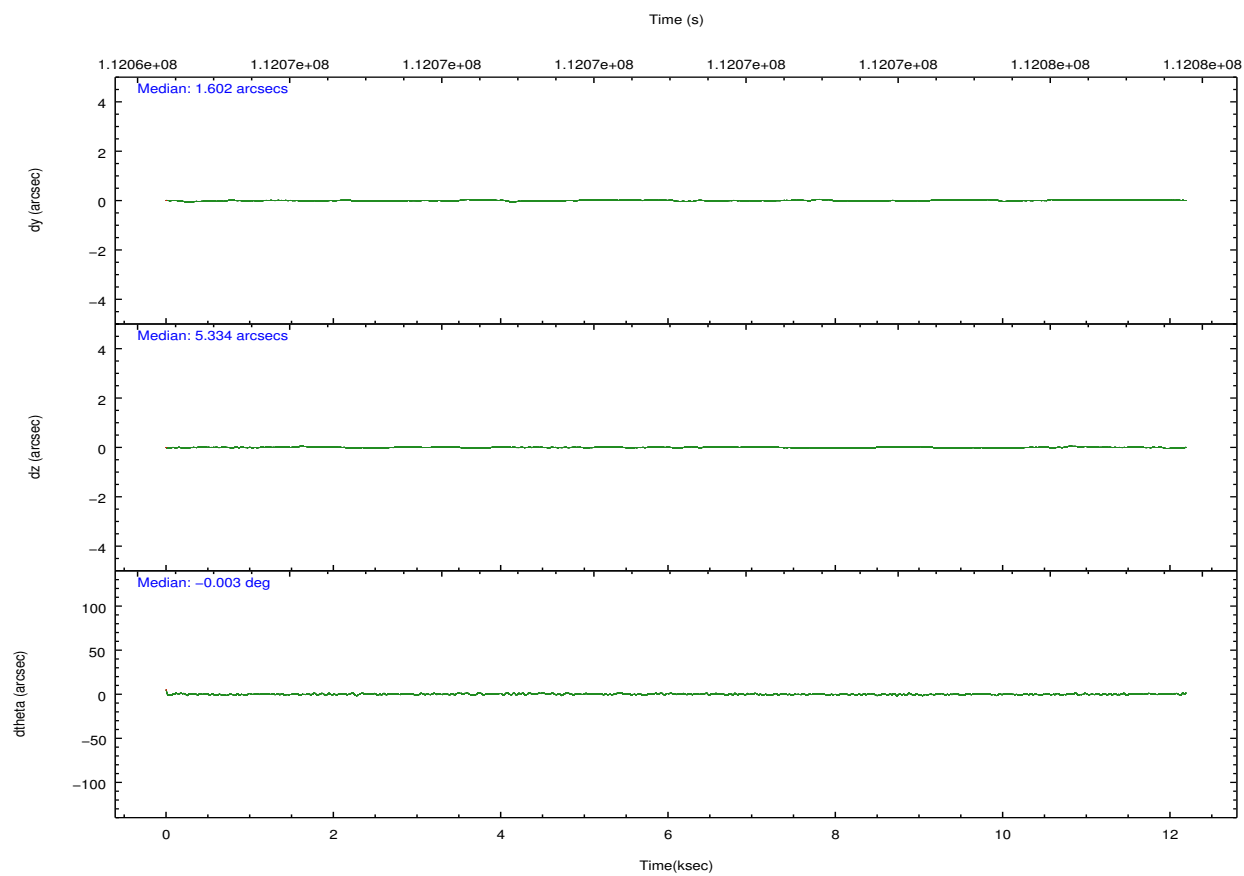
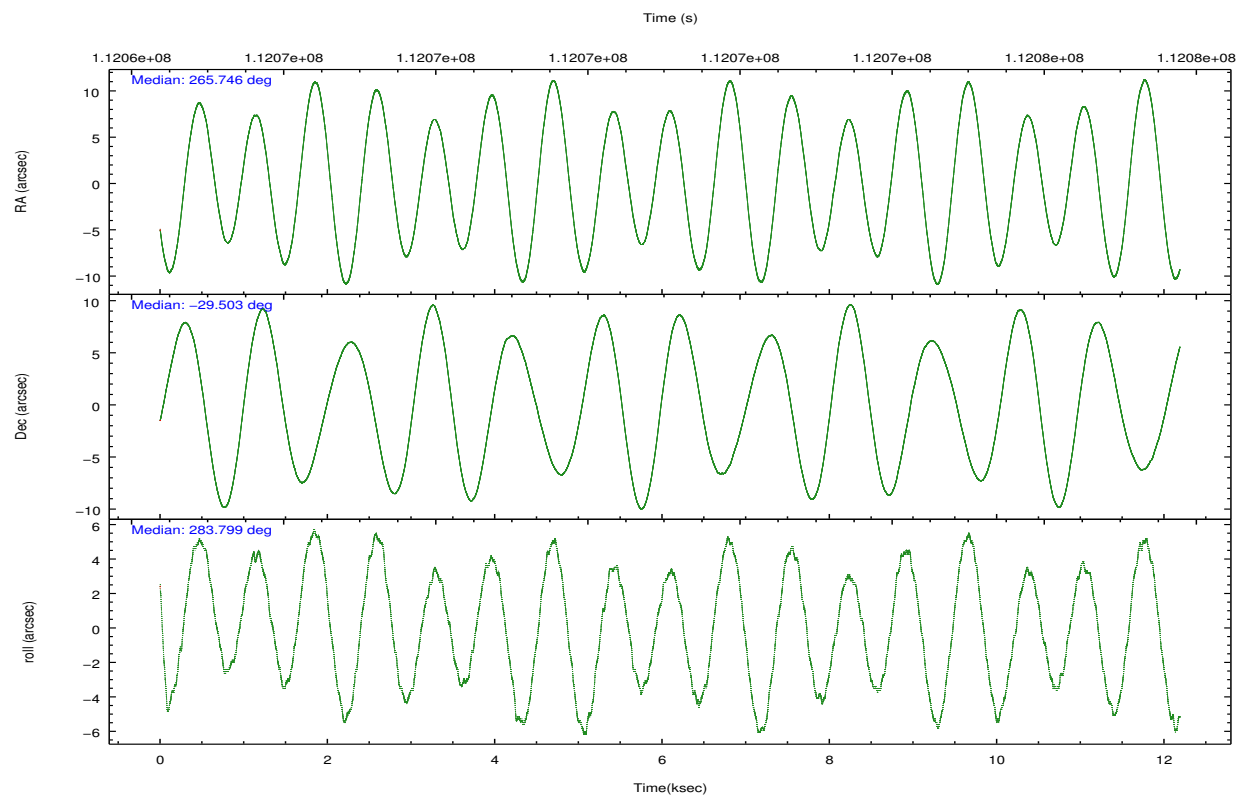
2.2 Compared Parameters

Parameter	Planned	Actual
Instrument	ACIS	ACIS
Detector	ACIS-012367	ACIS-012367
Grating	NONE	NONE
Data mode	FAINT	FAINT
Observation mode	POINTING	POINTING
[deg] Pointing RA	265.724081	265.7459063434709
[deg] Pointing Dec	-29.483587	-29.50336041387259
[deg] Pointing Roll	283.587823	283.8072544262777
[deg] Roll angle	283.600000	283.600000
[deg] Roll tolerance	2.000000	2.000000
Roll constraint allows 180D rotation	N	N
[mm] SIM focus pos	-0.782348	-0.7809083437167272
[mm] SIM defocus	0	0.001439871863259334
[mm] SIM translation stage pos	-233.592463	-233.5874344608287
[mm] SIM translation stage offset	0	-0.005018542100998502
[s] Observation start time (MET)	112065176.184000	112064799.6494
Observation start date	2001-07-21T01:11:52	2001-07-21T01:06:39
[s] Observation end time (MET)	112077176.184000	112077309.77489
Observation end date	2001-07-21T04:31:52	2001-07-21T04:35:09
Read mode	TIMED	TIMED

Parameter	Planned	Actual
Obspar format version number	7	7
Obspar file type	PREDICTED	ACTUAL
Obspar update status	NONE	UPDATED
Number of optional ACIS chips dropped	0	0
On-chip summing requested	N	N
Subarray requested	NONE	NONE
Alternating exposures requested	N	N
[s] Primary exposure time	0.000000	3.2

2.3 Aspect



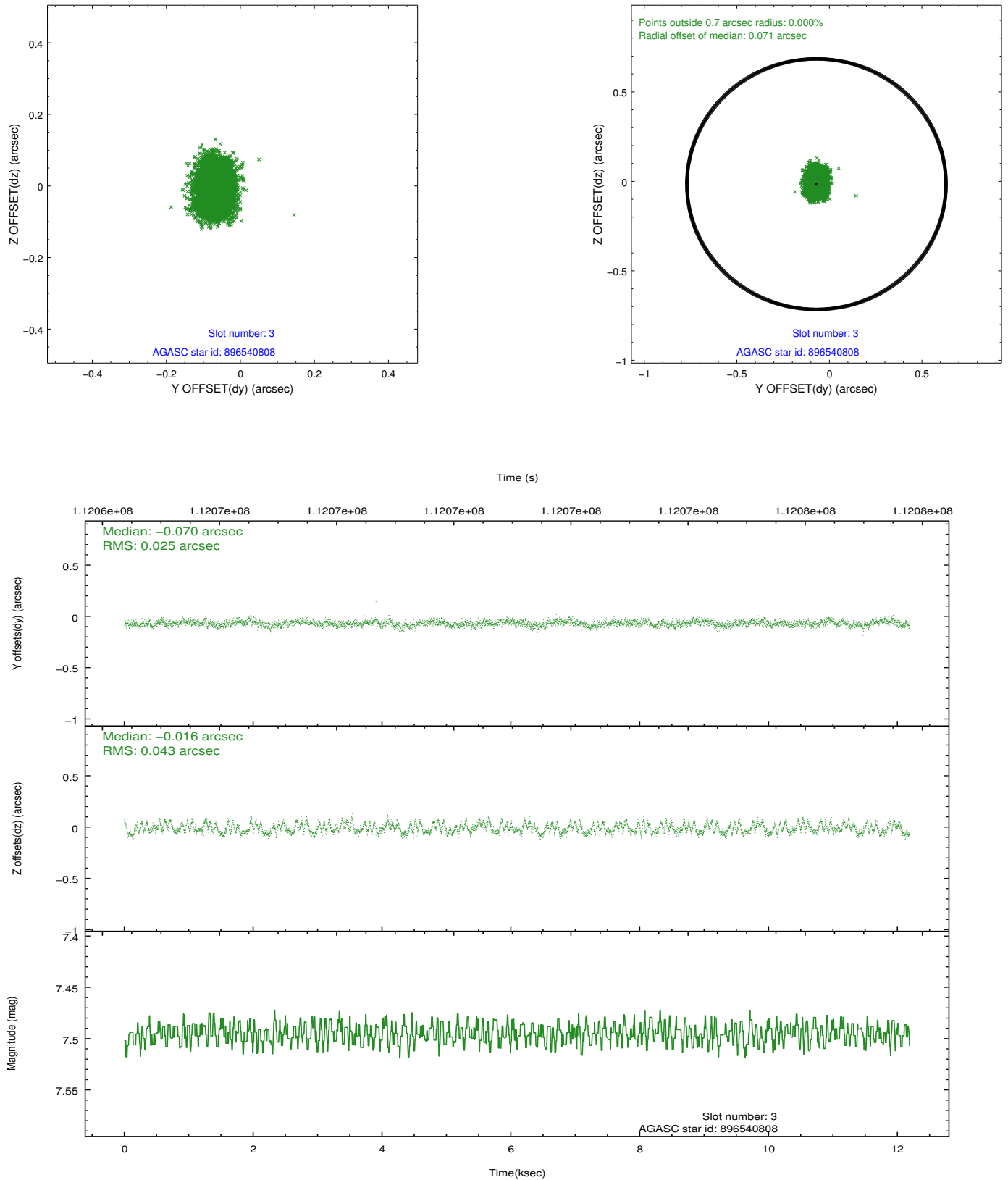


Slot Statistics

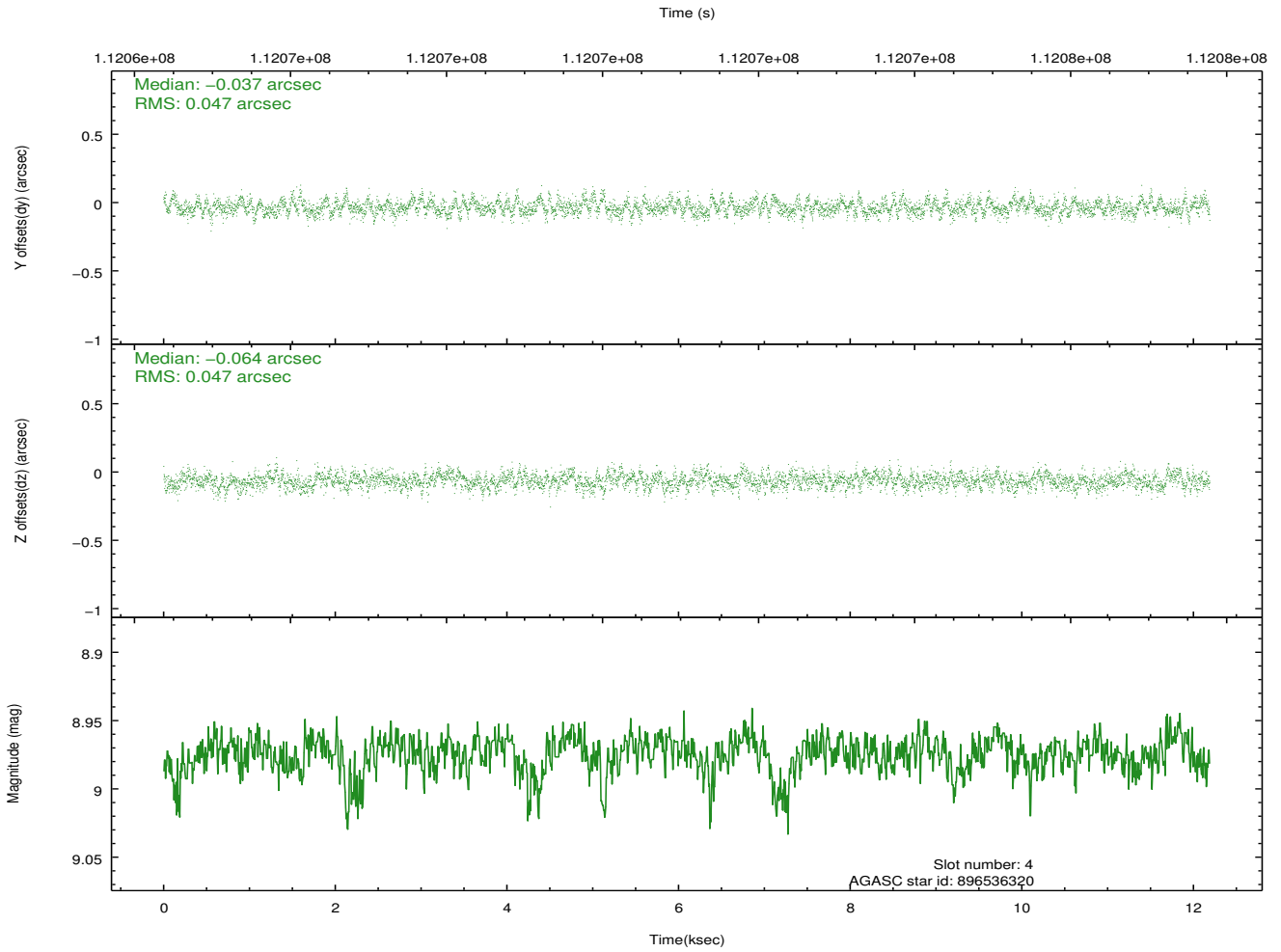
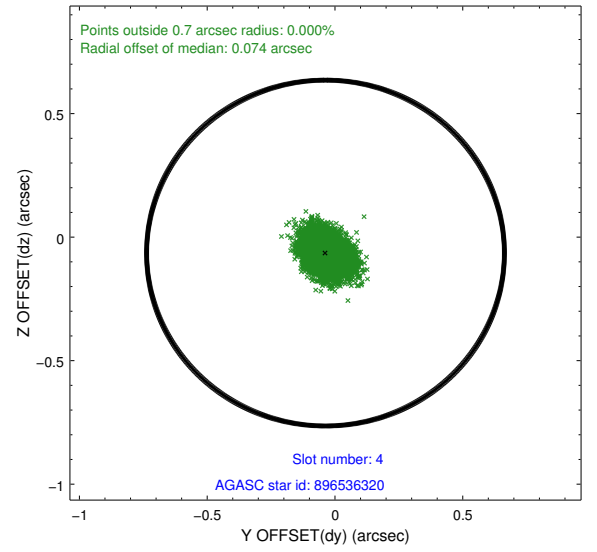
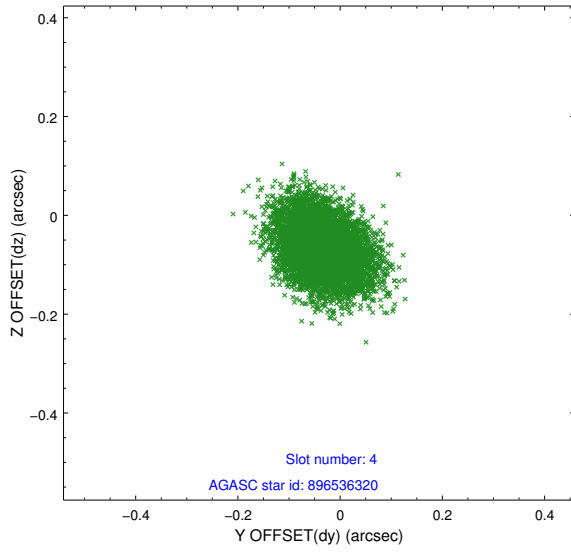
slot	status	id	mag	n_pts	med_dy	med_dz	dr1	dr2	ra	dec	mean_y	mean_z
0	FID	ACIS-I-2	7.15	2974	-0.027	-0.049	0.009	0.015	0.000000	0.000000	-755.96	-835.10
1	FID	ACIS-I-4	7.19	2974	-0.027	0.037	0.006	0.010	0.000000	0.000000	2157.90	1070.98
2	FID	ACIS-I-5	7.24	2974	-0.047	0.081	0.009	0.015	0.000000	0.000000	-1809.30	1069.30
3	GUIDE	896540808	7.50	5946	-0.070	-0.016	0.054	0.086	265.985401	-29.308604	-418.38	945.69
4	GUIDE	896536320	8.97	5941	-0.037	-0.064	0.071	0.116	266.369048	-29.307026	-136.60	2116.73
5	GUIDE	896403224	8.28	5947	0.140	0.050	0.069	0.114	265.612825	-29.438915	-237.39	-300.32
6	GUIDE	966787648	8.90	5946	0.091	-0.001	0.073	0.118	265.297931	-30.077843	1770.78	-1792.85
7	GUIDE	896402080	9.40	5941	-0.126	0.034	0.082	0.136	264.880091	-29.164813	-1728.54	-2311.49

2.4 Star Slots

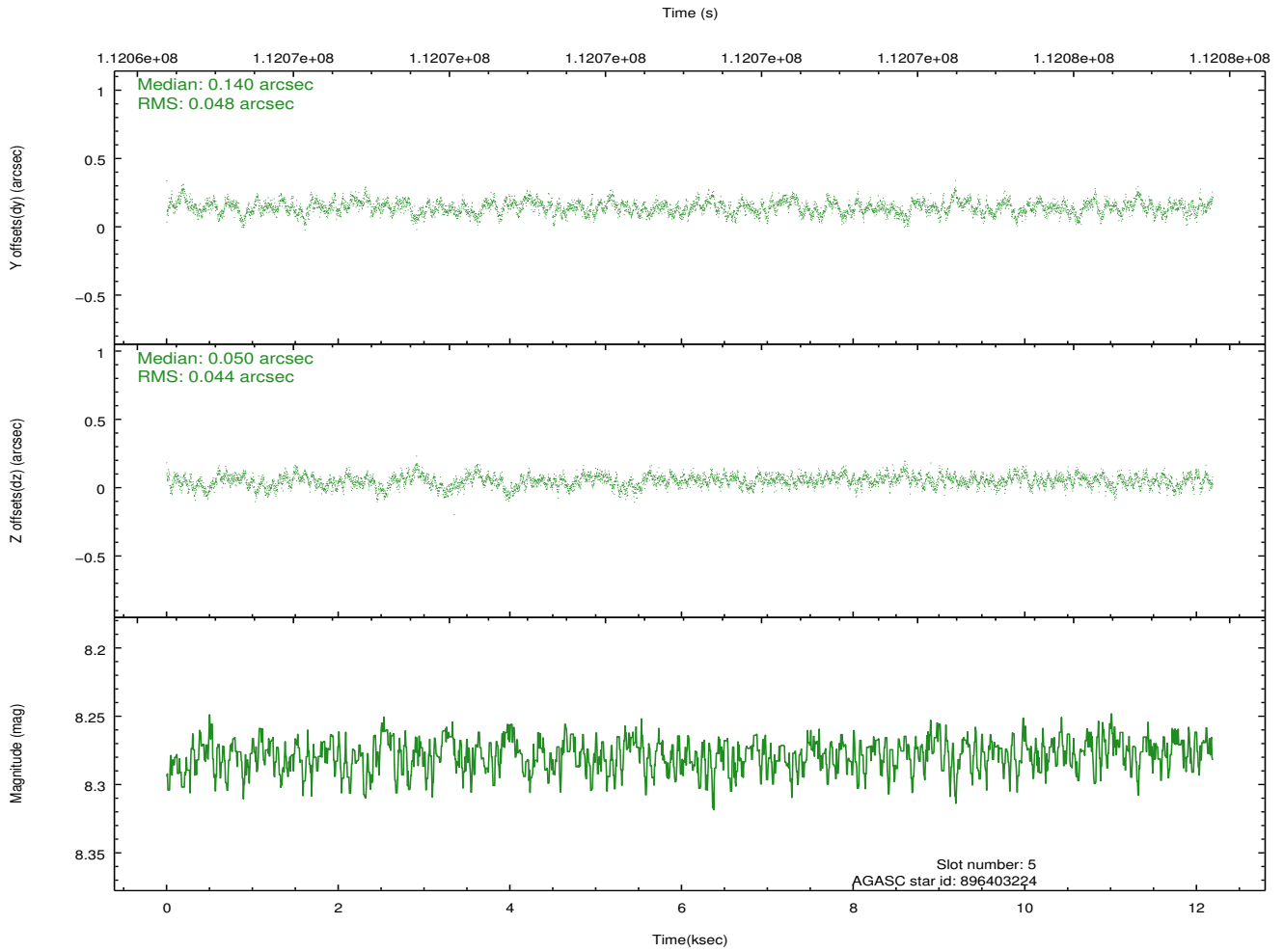
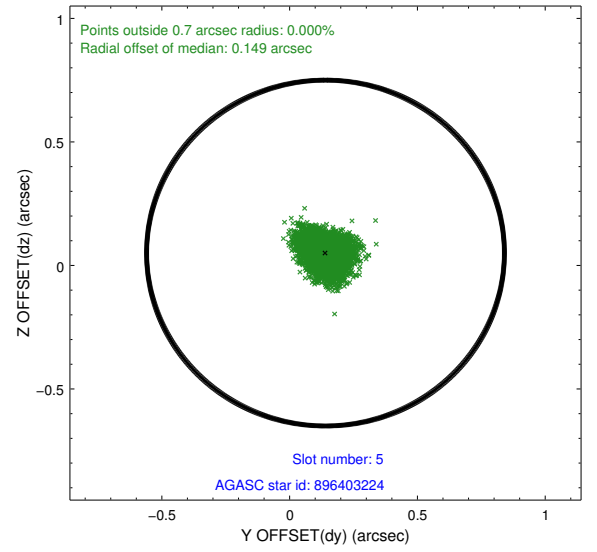
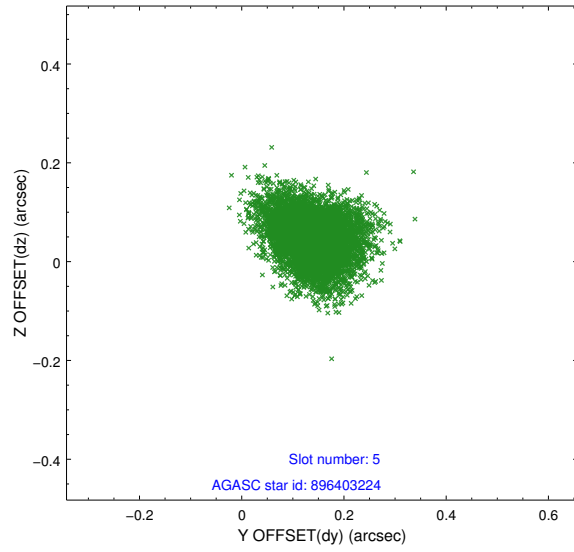
2.4.1 Slot 3



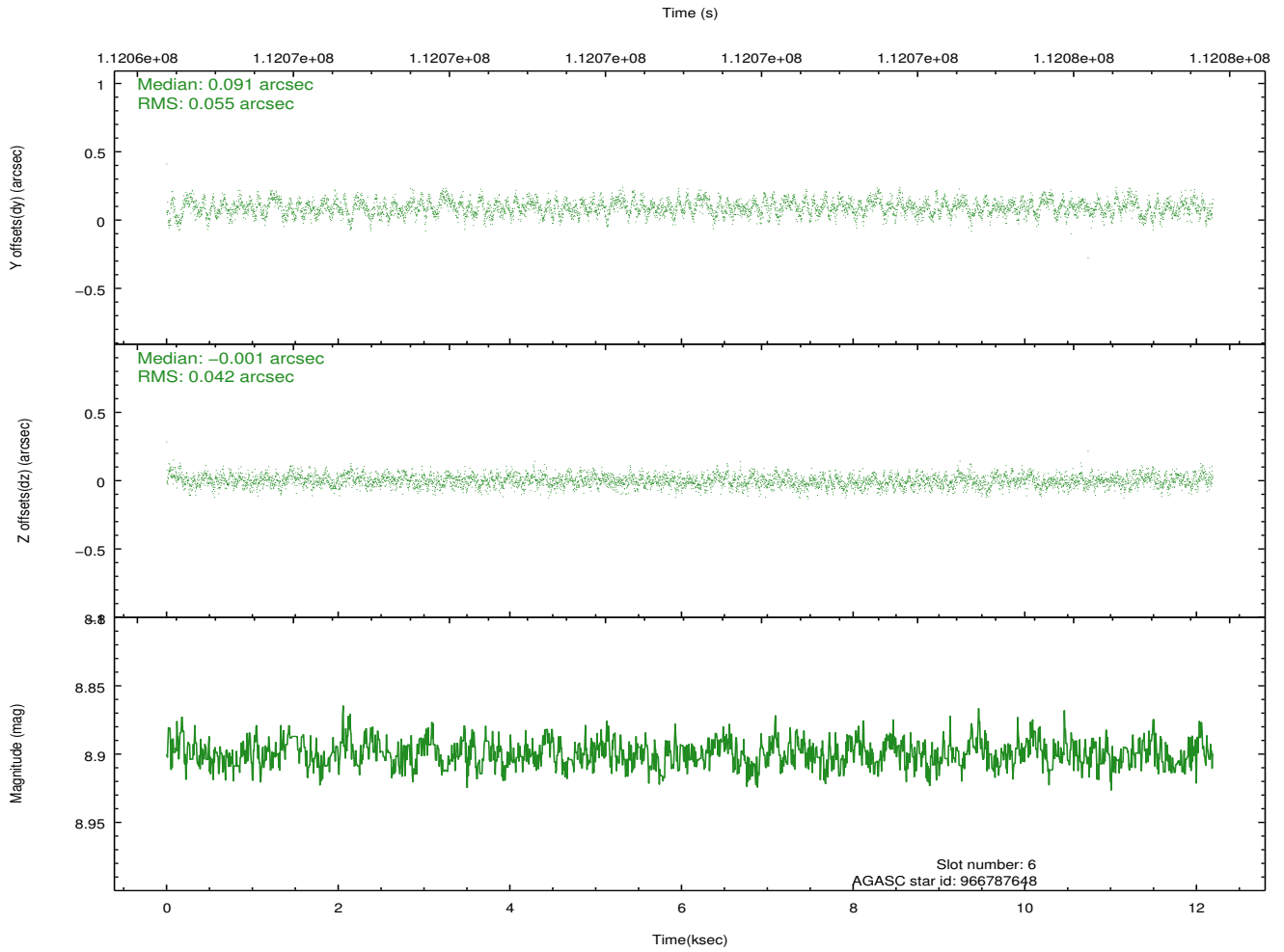
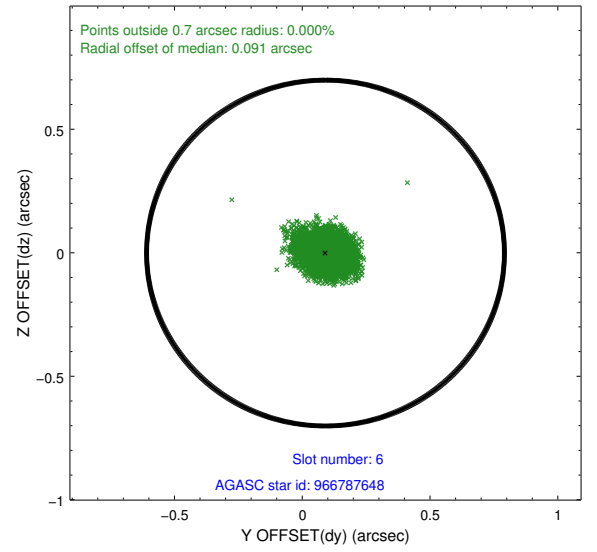
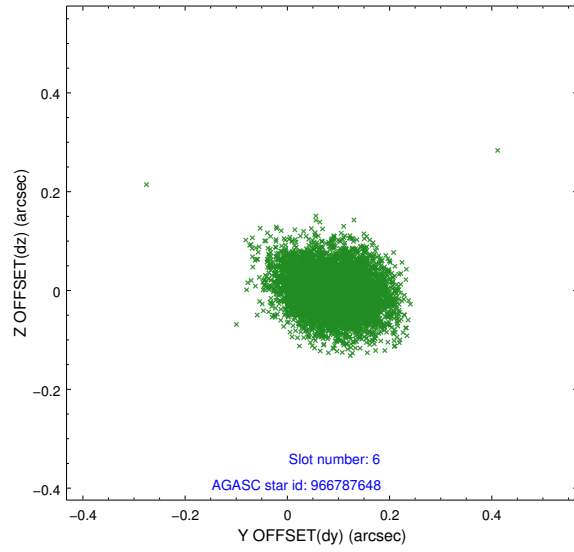
2.4.2 Slot 4



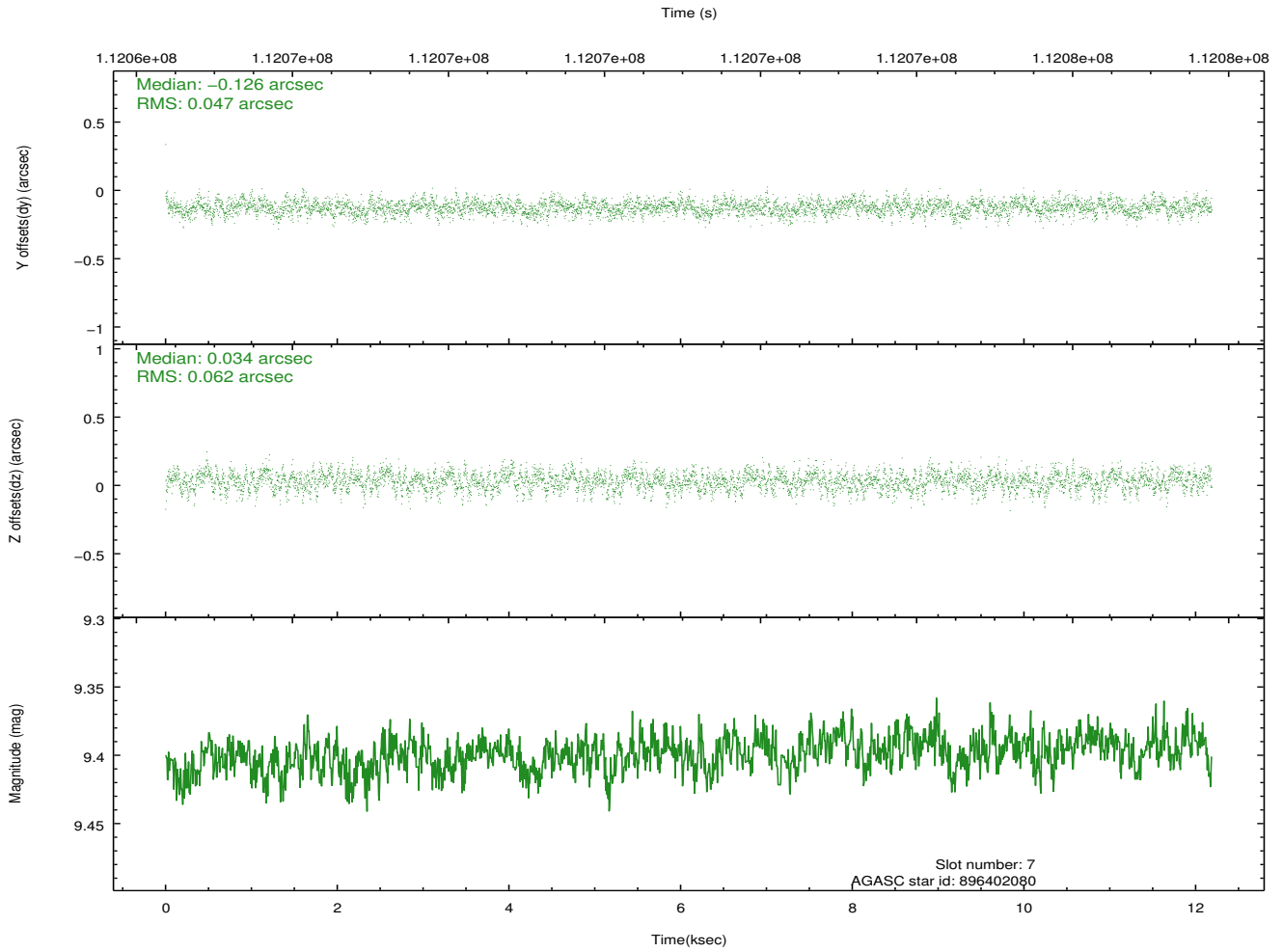
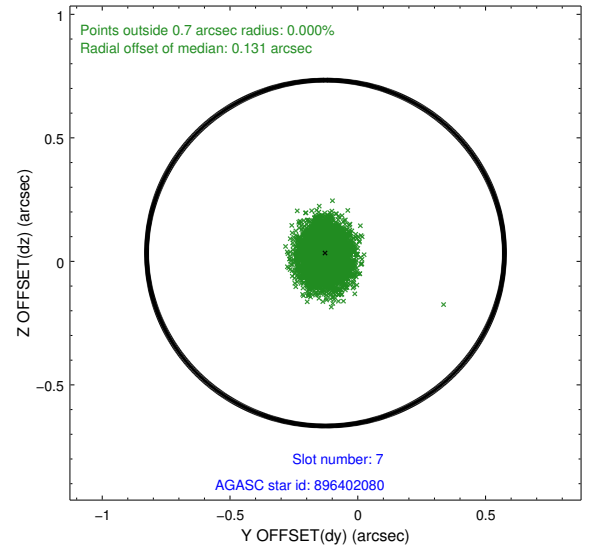
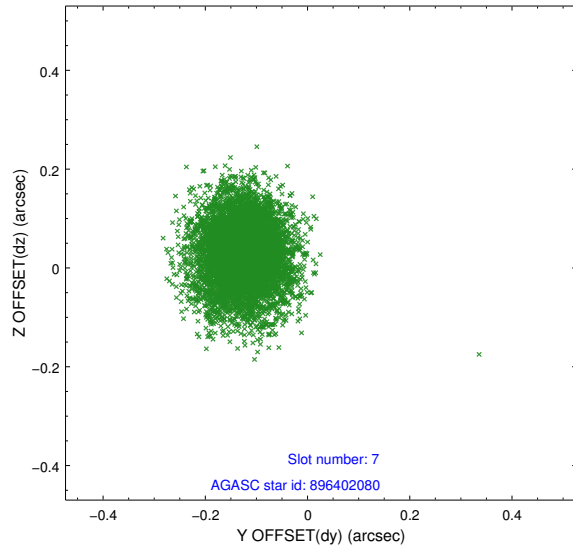
2.4.3 Slot 5



2.4.4 Slot 6

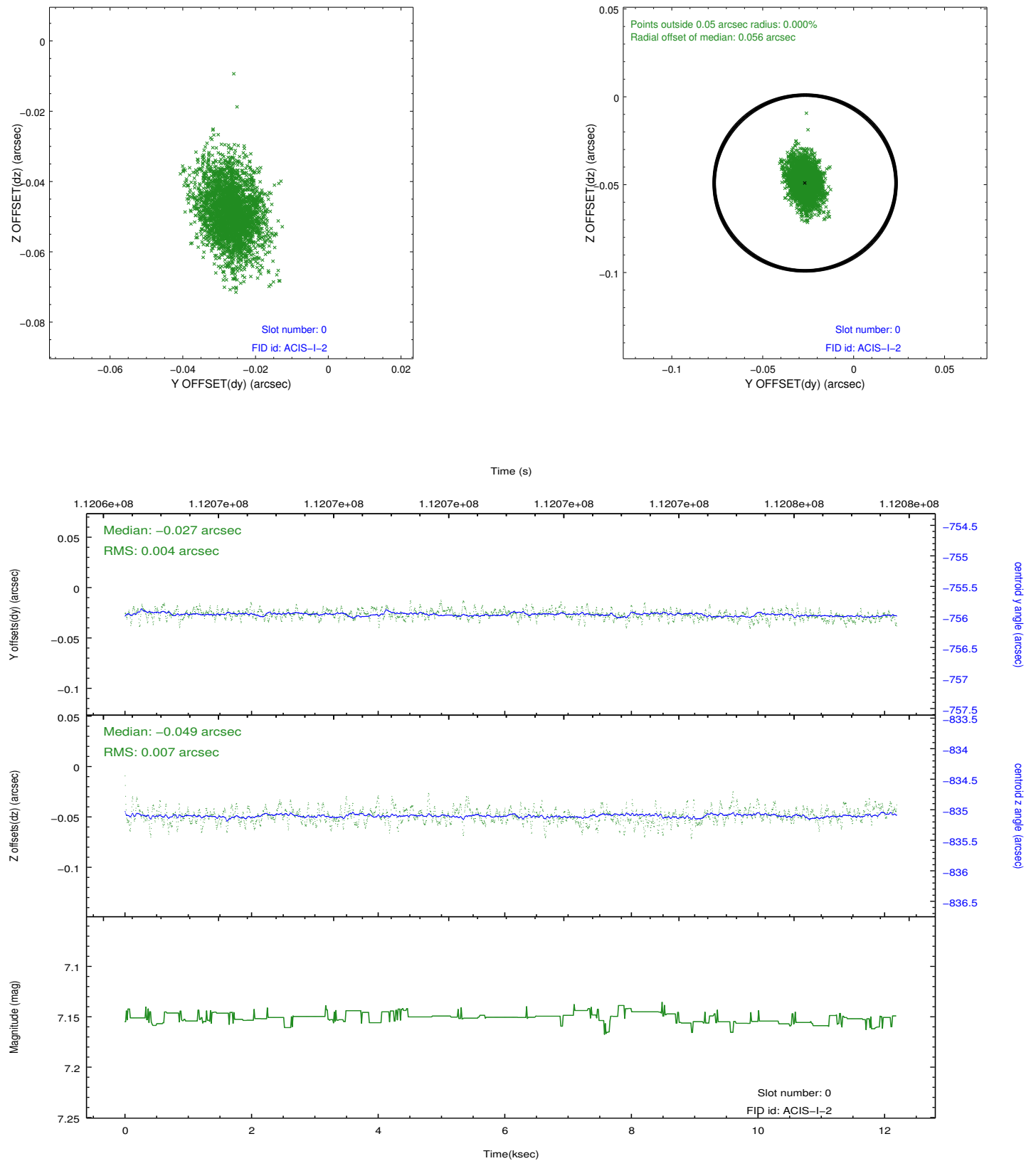


2.4.5 Slot 7

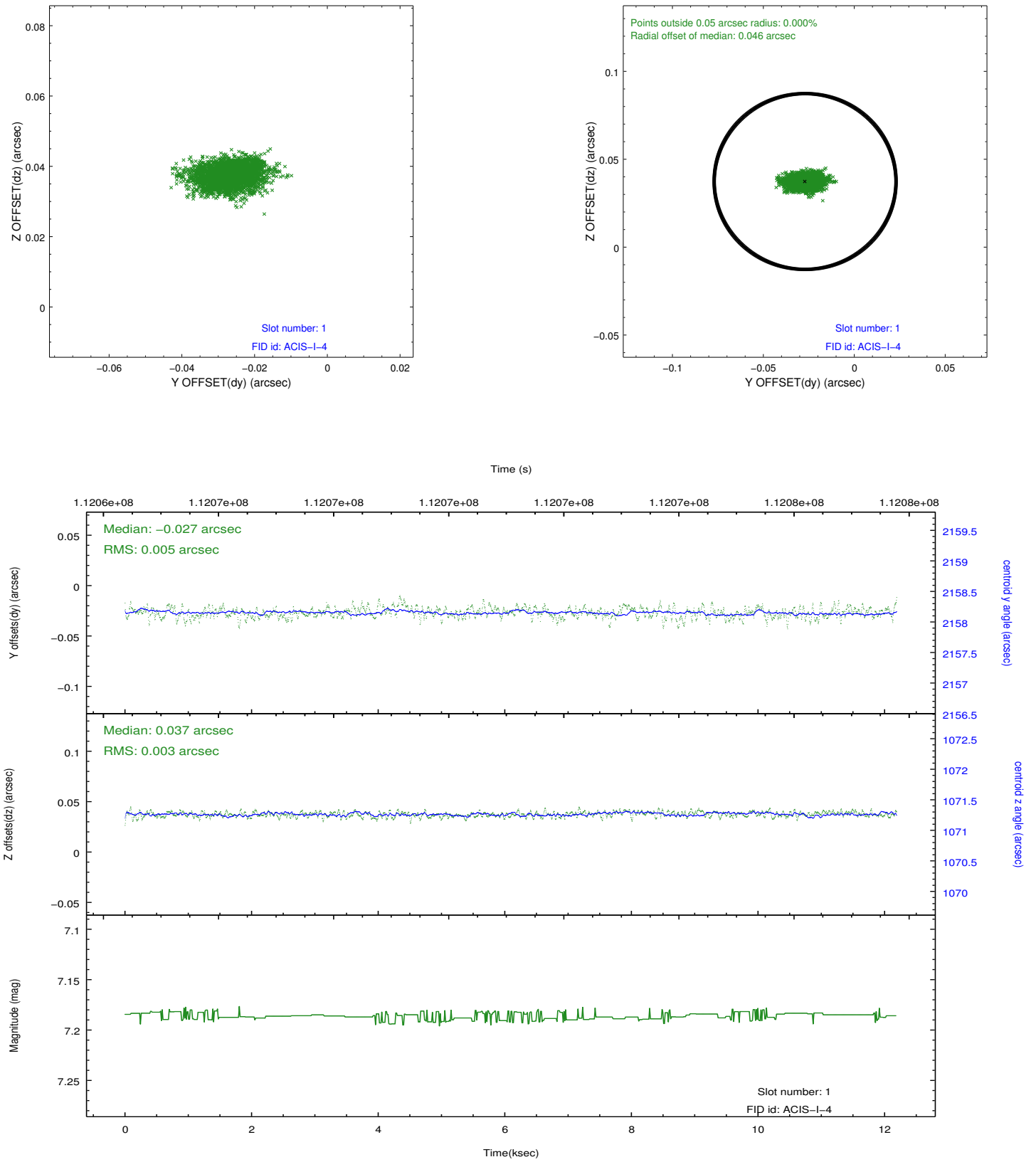


2.5 FID Slots

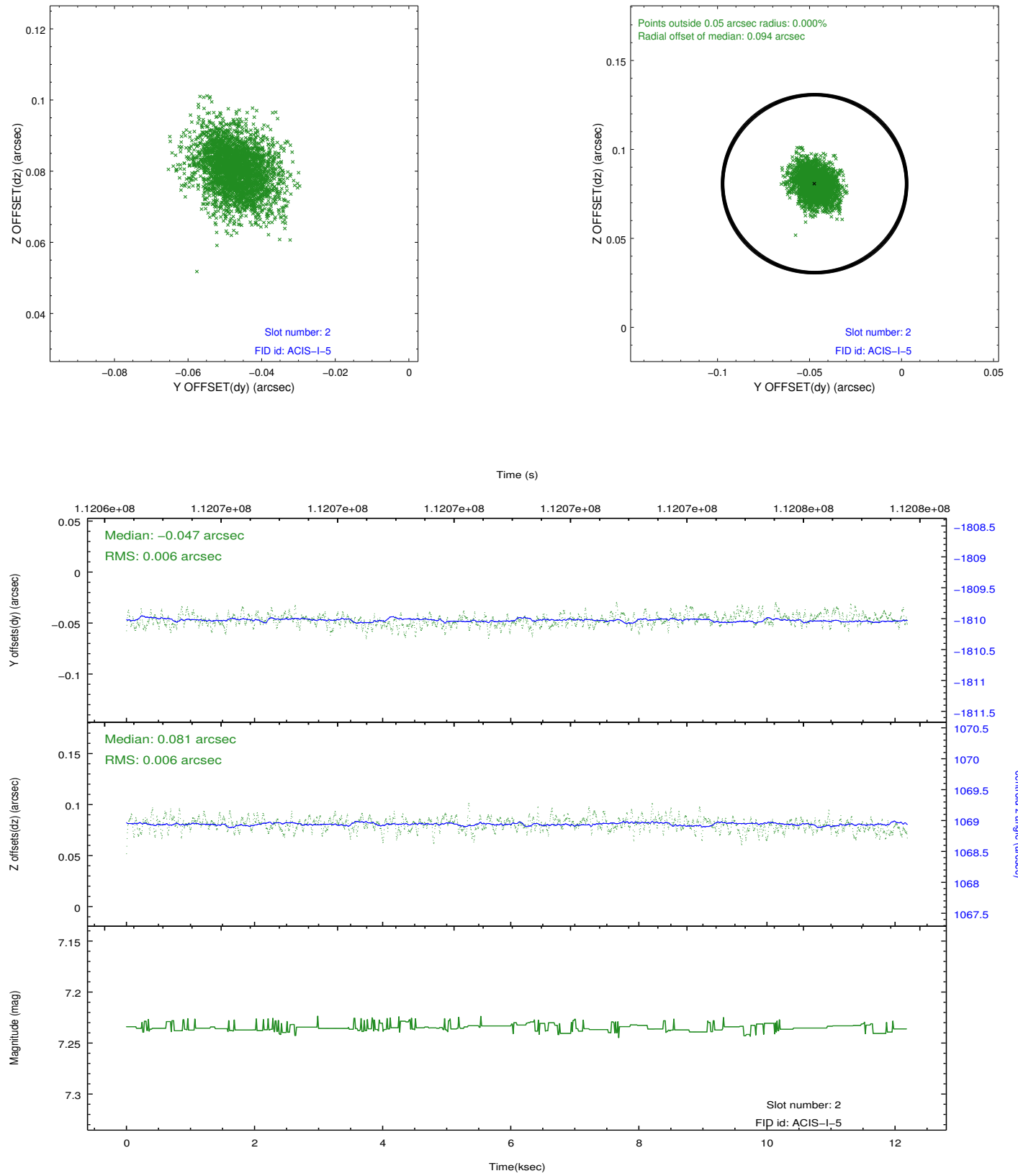
2.5.1 Slot 0



2.5.2 Slot 1



2.5.3 Slot 2



A Summary

A.1 Status

V&V Scientist	Jen Lauer
V&V Date (YYYY-MM-DD)	2012.09.24
V&V Edition	1
V&V Disposition and Status	OK
V&V Charge Time	11.8

A.2 Comments

Charge time for this ObsId remains at previous value of 11.8 ks although with the current processing the charge time would have been 11.76 ksec.
Roll constraint satisfied.