

V&V Reference Report

L2 ASCDS Version : 7.6.9

Observation 2277 - L2 Version 001
Chandra X-Ray Center

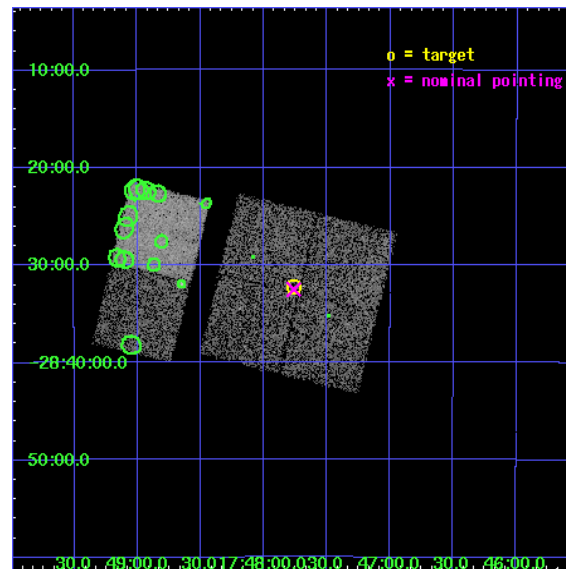
L2 Processing Date : Dec 14 2006

Contents

1	Front	2
2	OBI	3
2.1	OBI	3
2.1.1	Images	3
2.1.2	Bias	3
2.1.3	Parameters	4
2.1.4	Events	4
2.2	Compared Parameters	5
2.3	Aspect	6
2.4	Star Slots	9
2.4.1	Slot 3	9
2.4.2	Slot 4	10
2.4.3	Slot 5	11
2.4.4	Slot 6	12
2.4.5	Slot 7	13
2.5	FID Slots	14
2.5.1	Slot 0	14
2.5.2	Slot 1	15
2.5.3	Slot 2	16
3	Point Sources	17
A	Summary	18
A.1	Status	18
A.2	Comments	18

1 Front

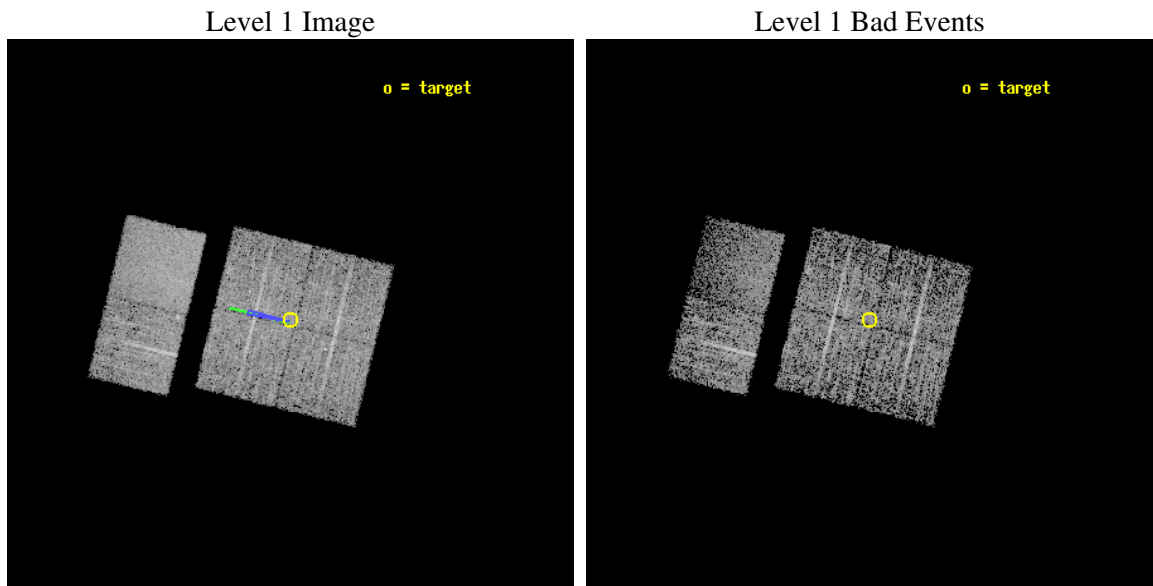
seq_num	900104
obs_id	2277
title	CHANDRA SURVEY OF THE GALACTIC RIDGE AROUND THE MILKY WAY CENTER
observer	Prof. Q. Daniel Wang
object	GCS 4
dtcycle	0
cycle	P
ra_targ	266.9414
dec_targ	-28.5374
ra_nom	266.94059919818
dec_nom	-28.542058548769
roll_nom	283.80731485381
revision	2
ontime	10556.800009832
livetime	10423.123451565
ontime0	10556.800009832
ontime1	10556.800009832
ontime2	10556.800009832
ontime3	10556.800009832
ontime6	10556.800009832
ontime7	10556.800009832
l2events	43627



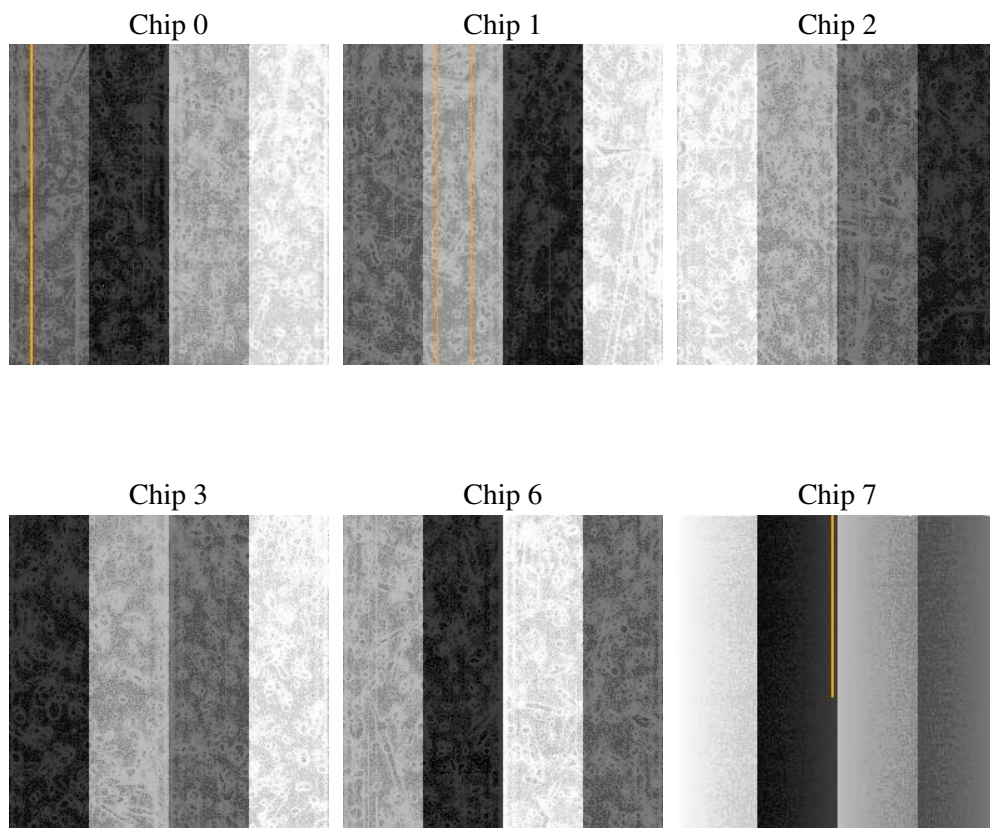
2 OBI

2.1 OBI

2.1.1 Images



2.1.2 Bias



2.1.3 Parameters

obi_num	0
ascdsver	7.6.9
caldbver	3.2.4
date	2006-12-14T09:13:01
revision	2

sched_exp_time	10800.000000
ontime	10562.439773023
ontime0	10562.439792946
ontime1	10562.439773023
ontime2	10562.439792961
ontime3	10562.439773023
ontime6	10562.439773023
ontime7	10562.439792961
l1events	175544

2.1.4 Events

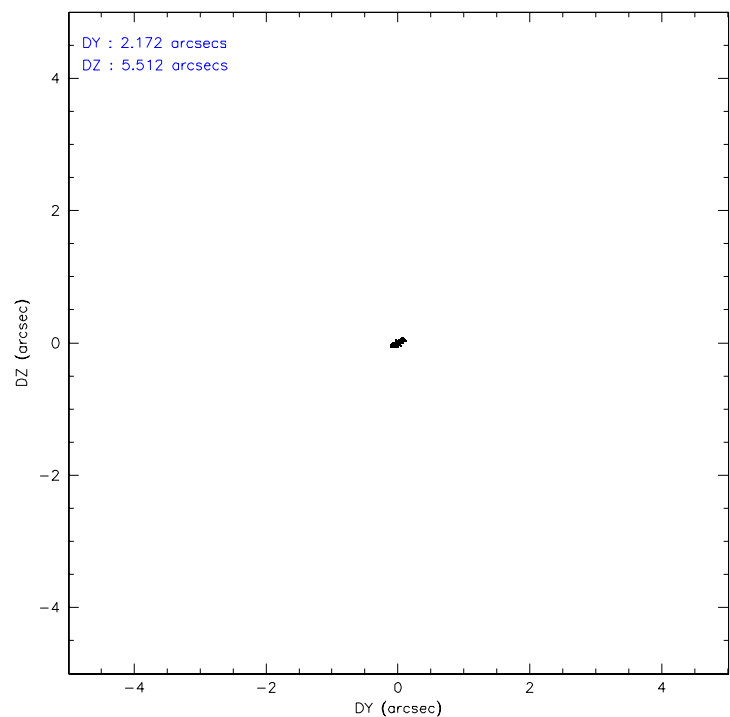
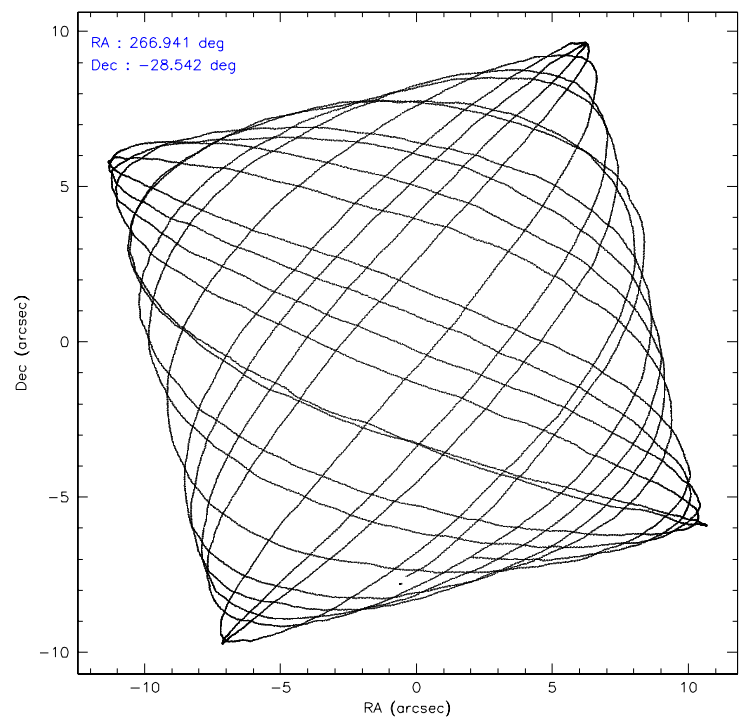
	ccd 0	ccd 1	ccd 2	ccd 3	ccd 6	ccd 7
level 1 events	26810	26871	28442	28032	29179	36210
rejected events	21189	20667	23419	22368	24064	17430
rejected %	79%	76%	82%	79%	82%	48%

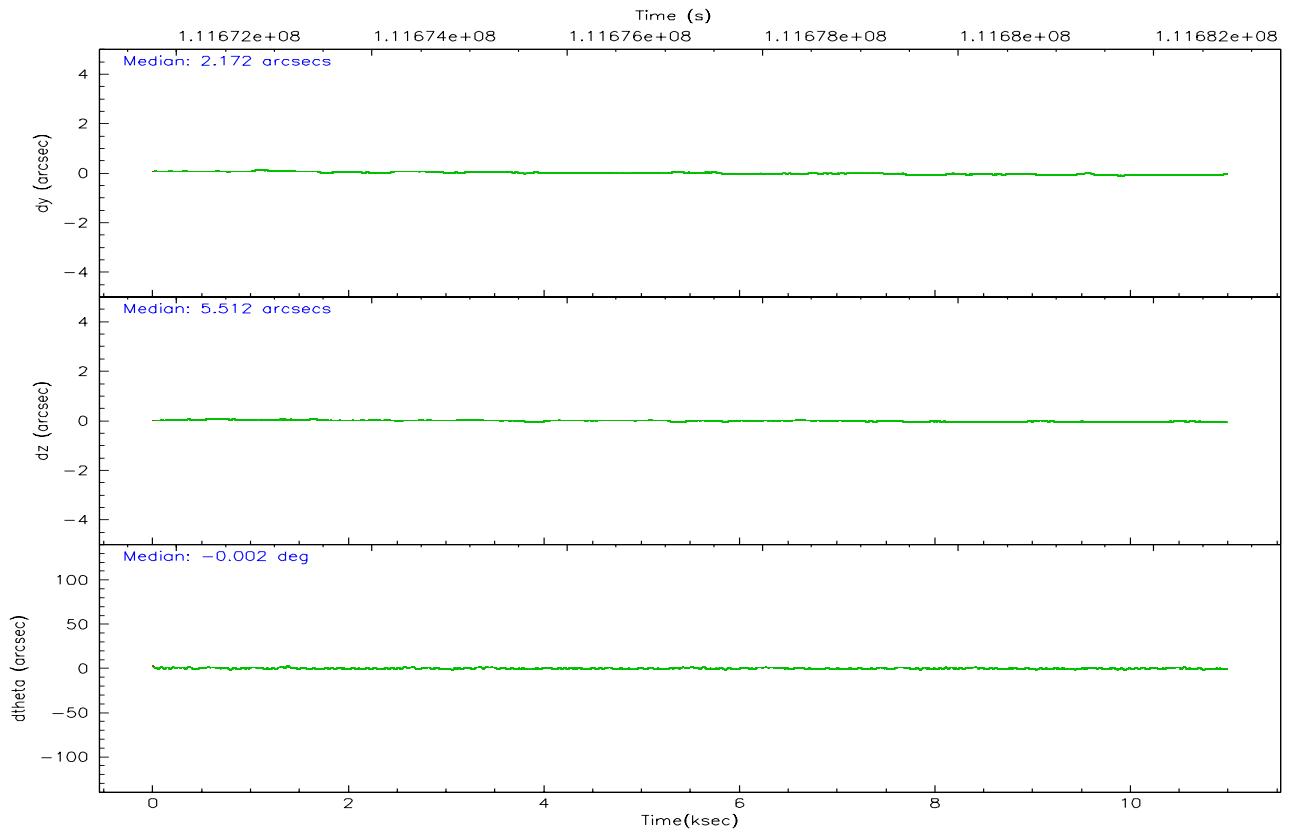
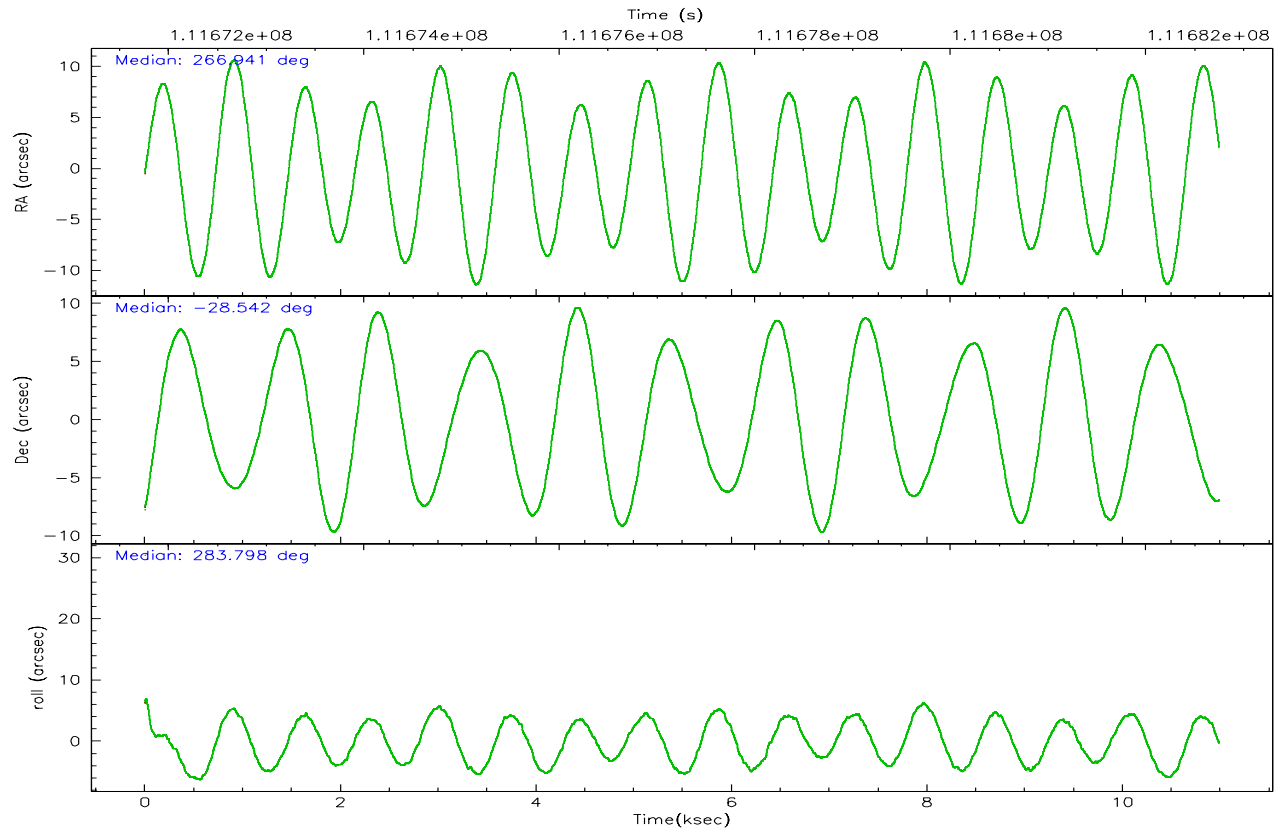
	ccd 0	ccd 1	ccd 2	ccd 3	ccd 6	ccd 7
grade 0 events	2830	2968	2467	2707	2317	1229
	10%	11%	8%	9%	7%	3%
grade 1 events	28	24	17	24	25	24
	0%	0%	0%	0%	0%	0%
grade 2 events	1085	1189	976	1127	989	4688
	4%	4%	3%	4%	3%	12%
grade 3 events	424	531	434	471	440	1061
	1%	1%	1%	1%	1%	2%
grade 4 events	453	508	393	469	443	1098
	1%	1%	1%	1%	1%	3%
grade 5 events	1025	1209	930	1225	1297	3134
	3%	4%	3%	4%	4%	8%
grade 6 events	832	1011	757	890	930	10713
	3%	3%	2%	3%	3%	29%
grade 7 events	20133	19431	22468	21119	22738	14263
	75%	72%	78%	75%	77%	39%

2.2 Compared Parameters

Parameter	Planned	Actual	Parameter	Planned	Actual
Instrument	ACIS	ACIS	Obspar format version number	6	6
Detector	ACIS-012367	ACIS-012367	Obspar file type	PREDICTED	ACTUAL
Grating	NONE	NONE	Obspar update status	NONE	UPDATED
Data mode	FAINT	FAINT	Number of optional ACIS chips dropped	0	0
Observation mode	POINTING	POINTING	On-chip summing requested	N	N
Pointing RA	266.918893	266.9405991981768	Subarray requested	NONE	NONE
Pointing Dec	-28.522294	-28.54205854876923	Alternating exposures requested	N	N
Pointing Roll	283.588249	283.8073148538089	Primary exposure time	0.000000	3.2
Roll angle	283.600000	283.600000			
Roll tolerance	2.000000	2.000000			
Roll constraint allows 180D rotation	N	N			
SIM focus pos (mm)	-0.782348	-0.7809083437167272			
SIM defocus (mm)	0	0.001439871863259334			
SIM translation stage pos (mm)	-233.592463	-233.5874344608287			
SIM translation stage offset (mm)	0	-0.005018542100998502			
Observation start time	111671952.184000	111671575.80902			
Observation start date	2001-07-16T11:58:08	2001-07-16T11:52:55			
Observation end time	111682752.184000	111682885.65946			
Observation end date	2001-07-16T14:58:08	2001-07-16T15:01:25			
Read mode	TIMED	TIMED			

2.3 Aspect



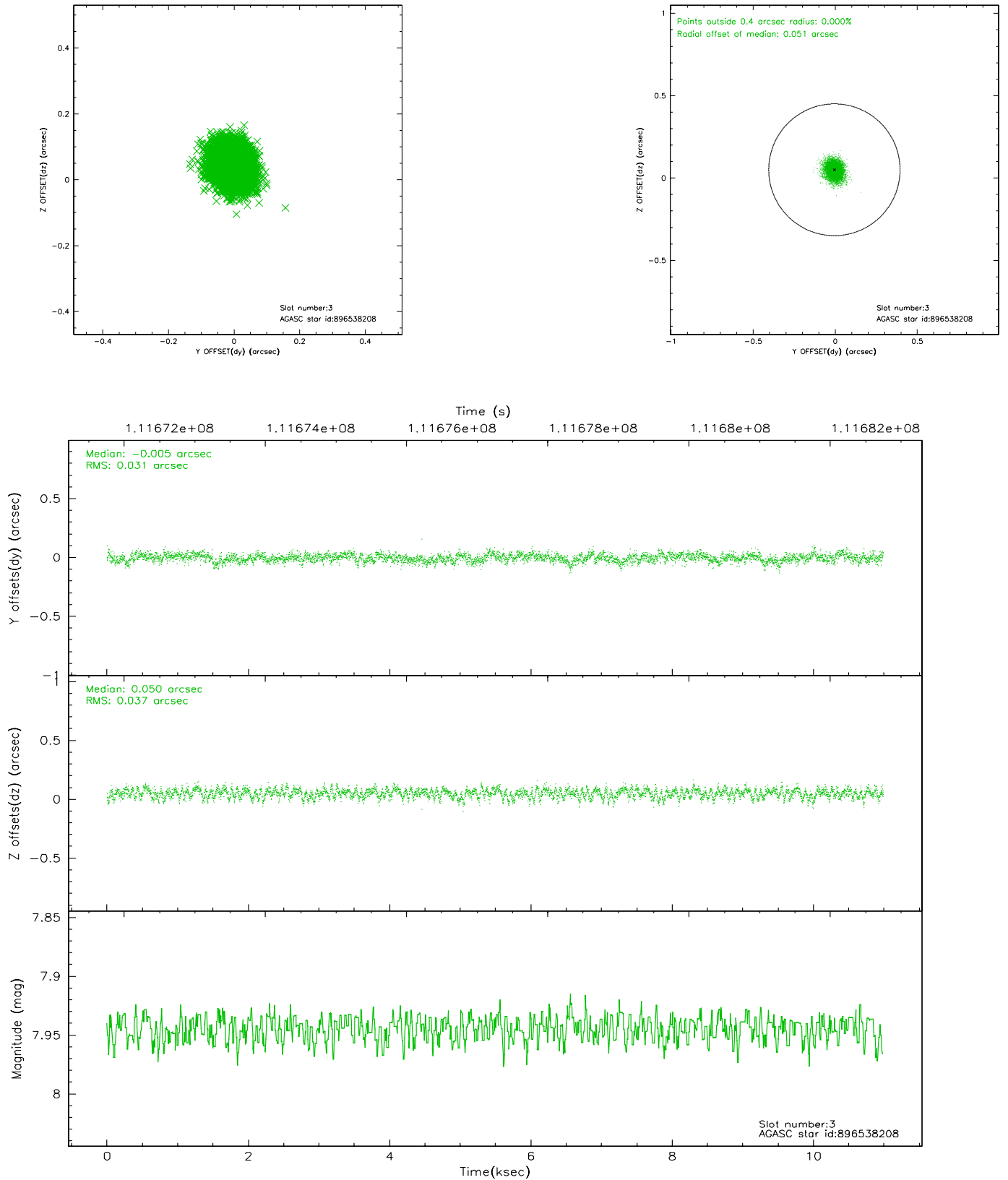


Slot Statistics

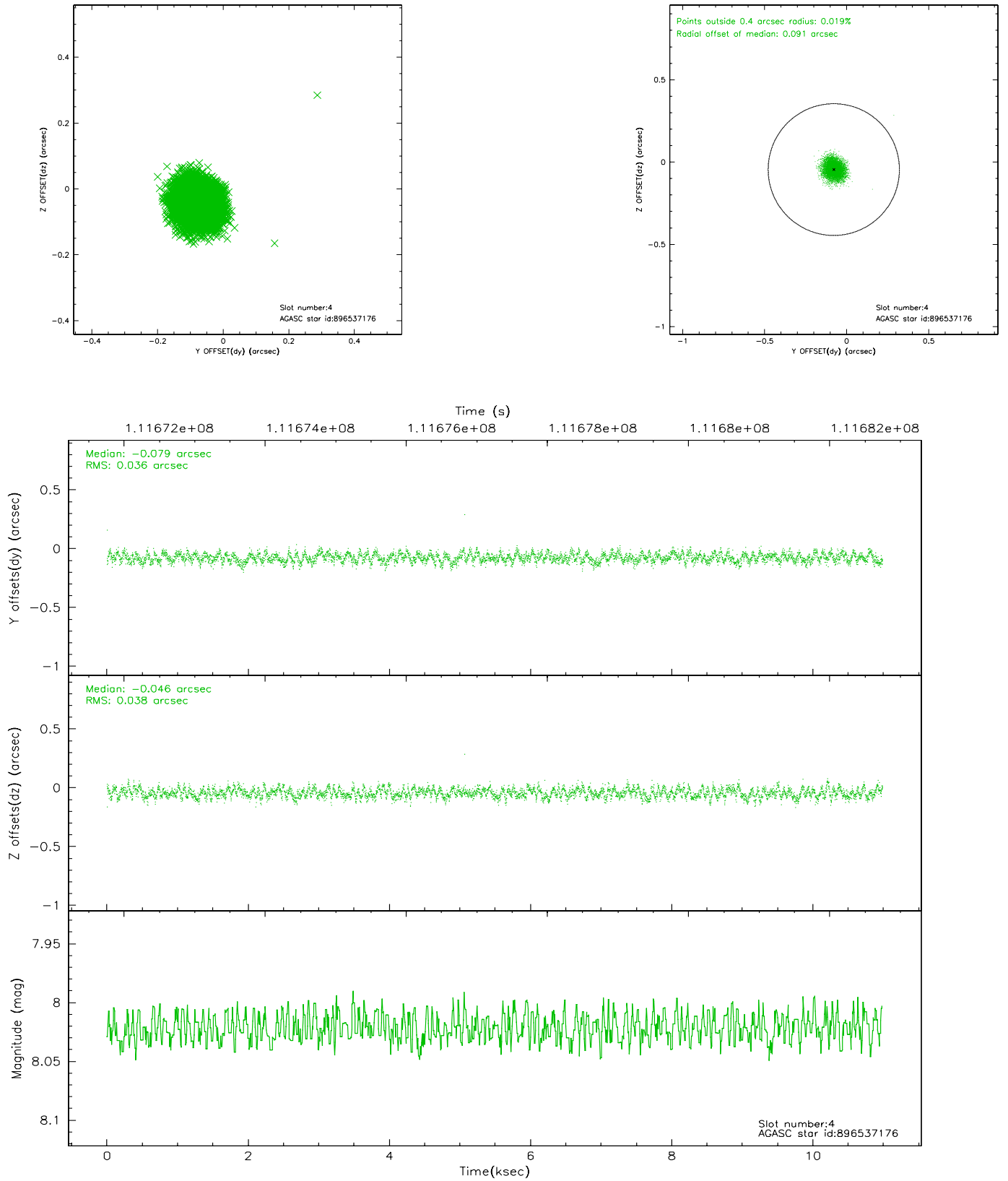
slot	status	id	mag	n_pts	med_dy	med_dz	dr1	dr2	ra	dec	mean_y	mean_z
0	FID	ACIS-I-2	7.15	2681	-0.025	-0.037	0.009	0.016	0.000000	0.000000	-756.55	-835.27
1	FID	ACIS-I-4	7.18	2681	-0.040	0.033	0.006	0.011	0.000000	0.000000	2157.27	1070.76
2	FID	ACIS-I-5	7.23	2681	-0.036	0.073	0.009	0.015	0.000000	0.000000	-1809.79	1069.16
3	GUIDE	896538208	7.94	5360	-0.005	0.050	0.051	0.083	267.176969	-28.671626	715.93	665.90
4	GUIDE	896537176	8.02	5360	-0.079	-0.046	0.056	0.087	266.498272	-28.678259	237.31	-1423.74
5	GUIDE	896536320	9.00	5357	0.225	-0.170	0.084	0.142	266.369048	-29.307026	2346.14	-2342.75
6	GUIDE	896011040	7.70	5360	-0.081	0.107	0.058	0.087	267.058469	-28.014759	-1670.18	859.73
7	GUIDE	896532608	8.54	5358	-0.059	0.060	0.059	0.096	267.503801	-28.129741	-932.59	2135.94

2.4 Star Slots

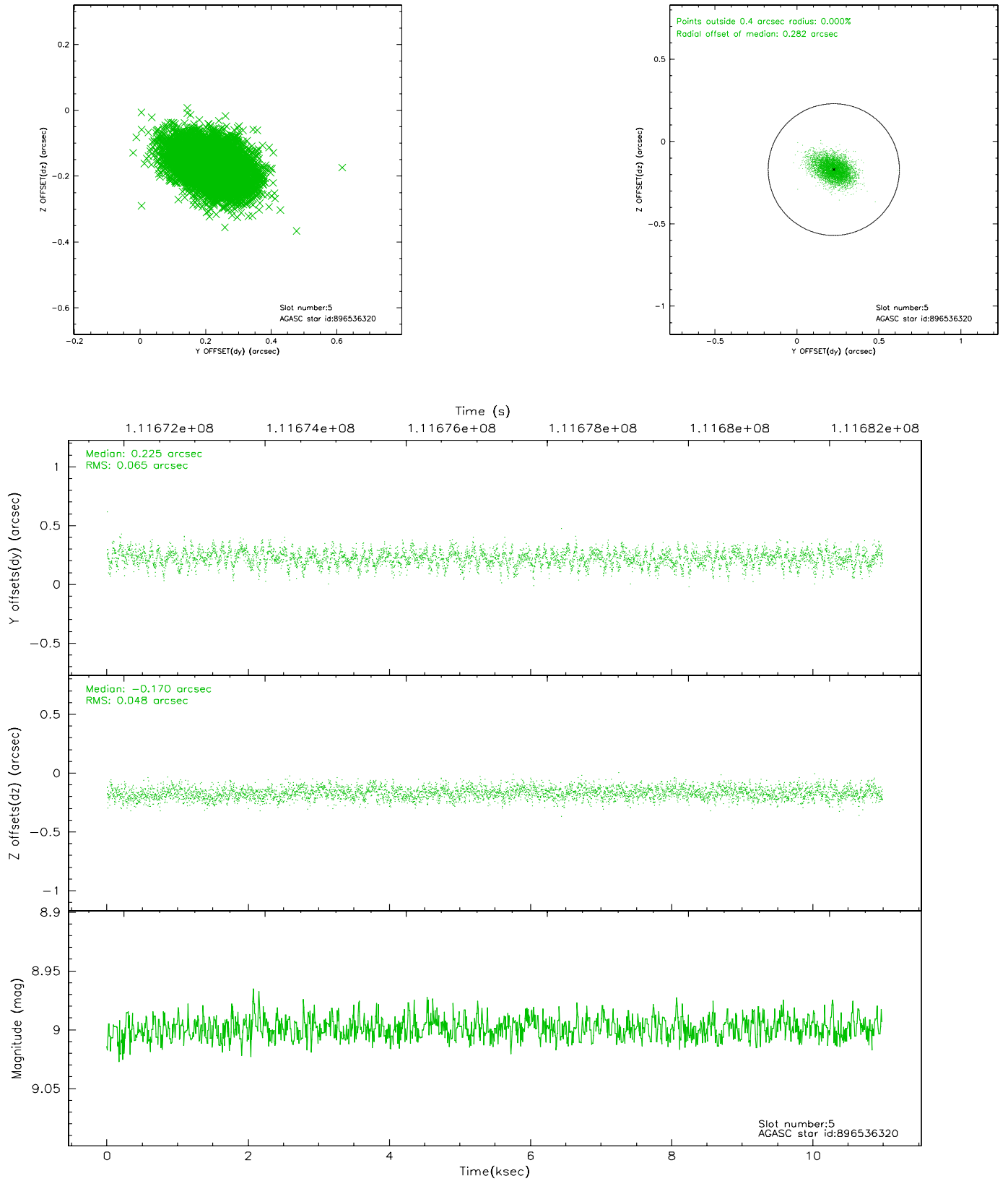
2.4.1 Slot 3



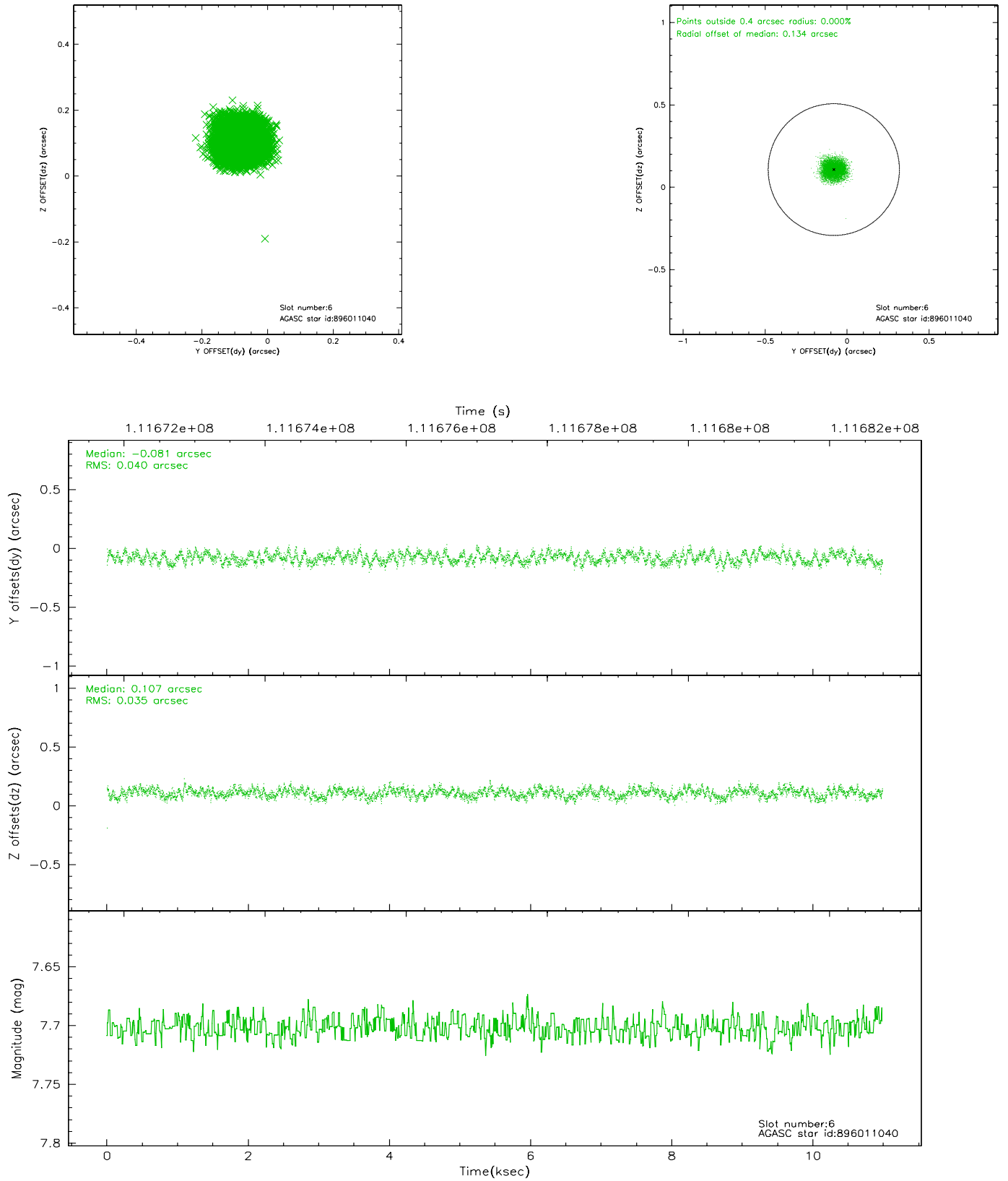
2.4.2 Slot 4



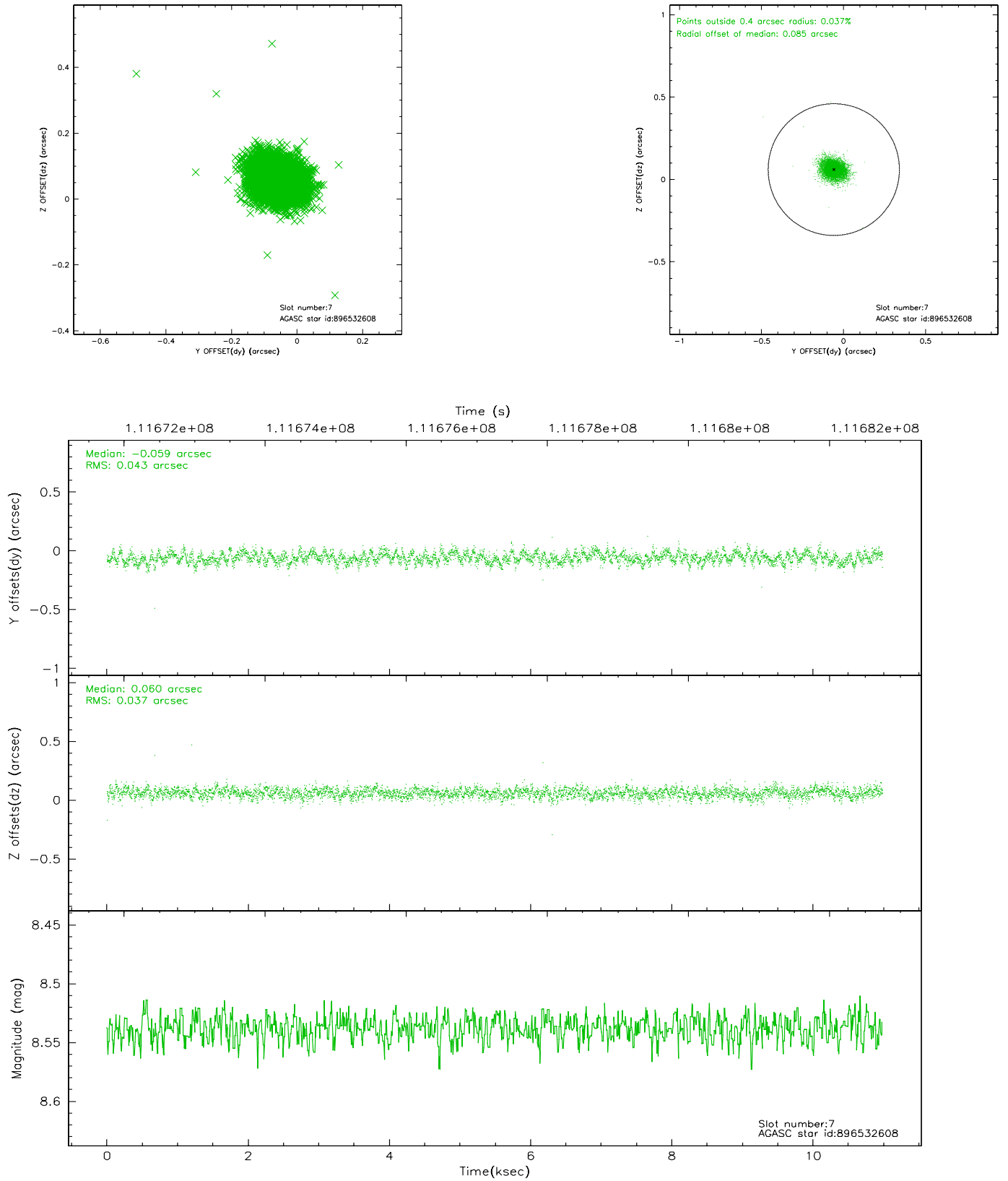
2.4.3 Slot 5



2.4.4 Slot 6

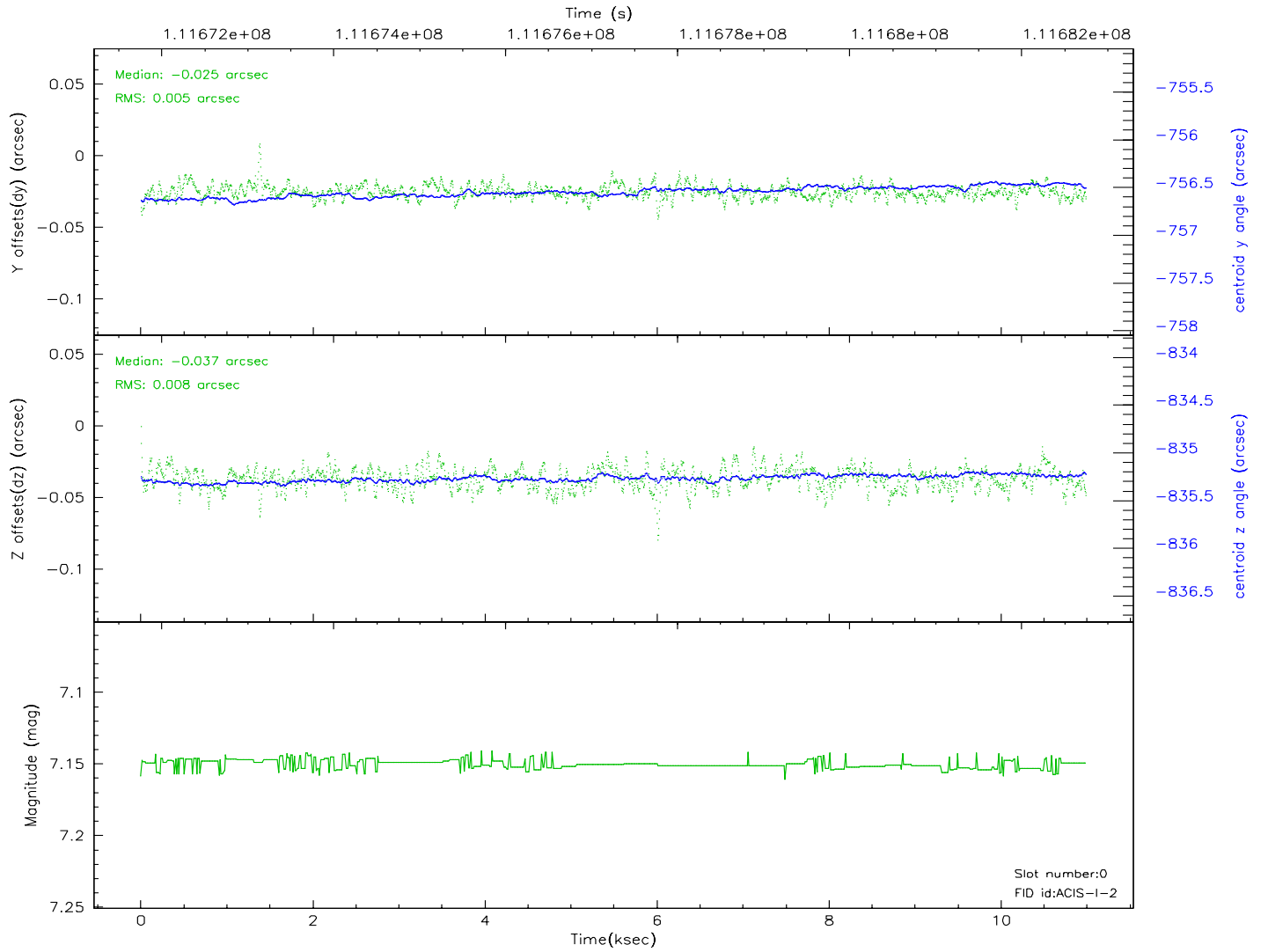
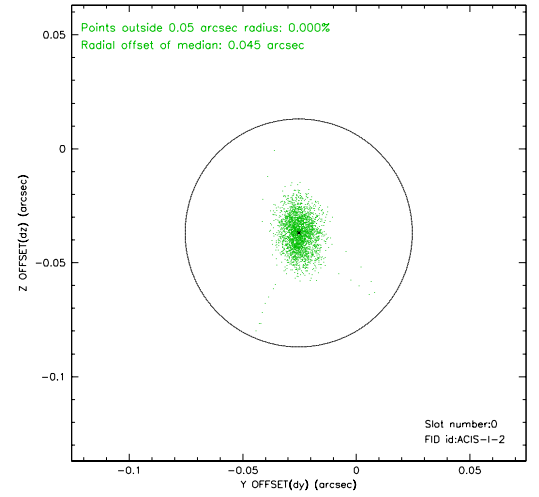
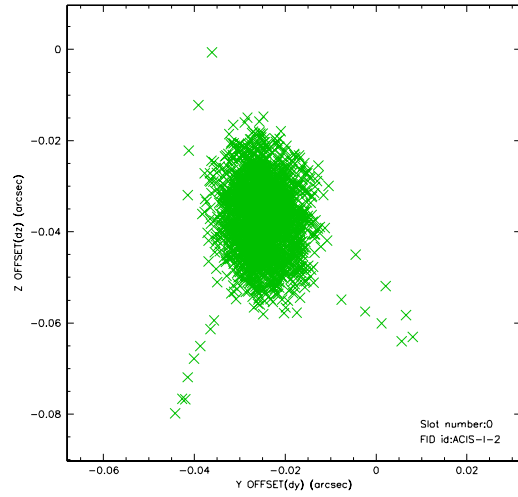


2.4.5 Slot 7

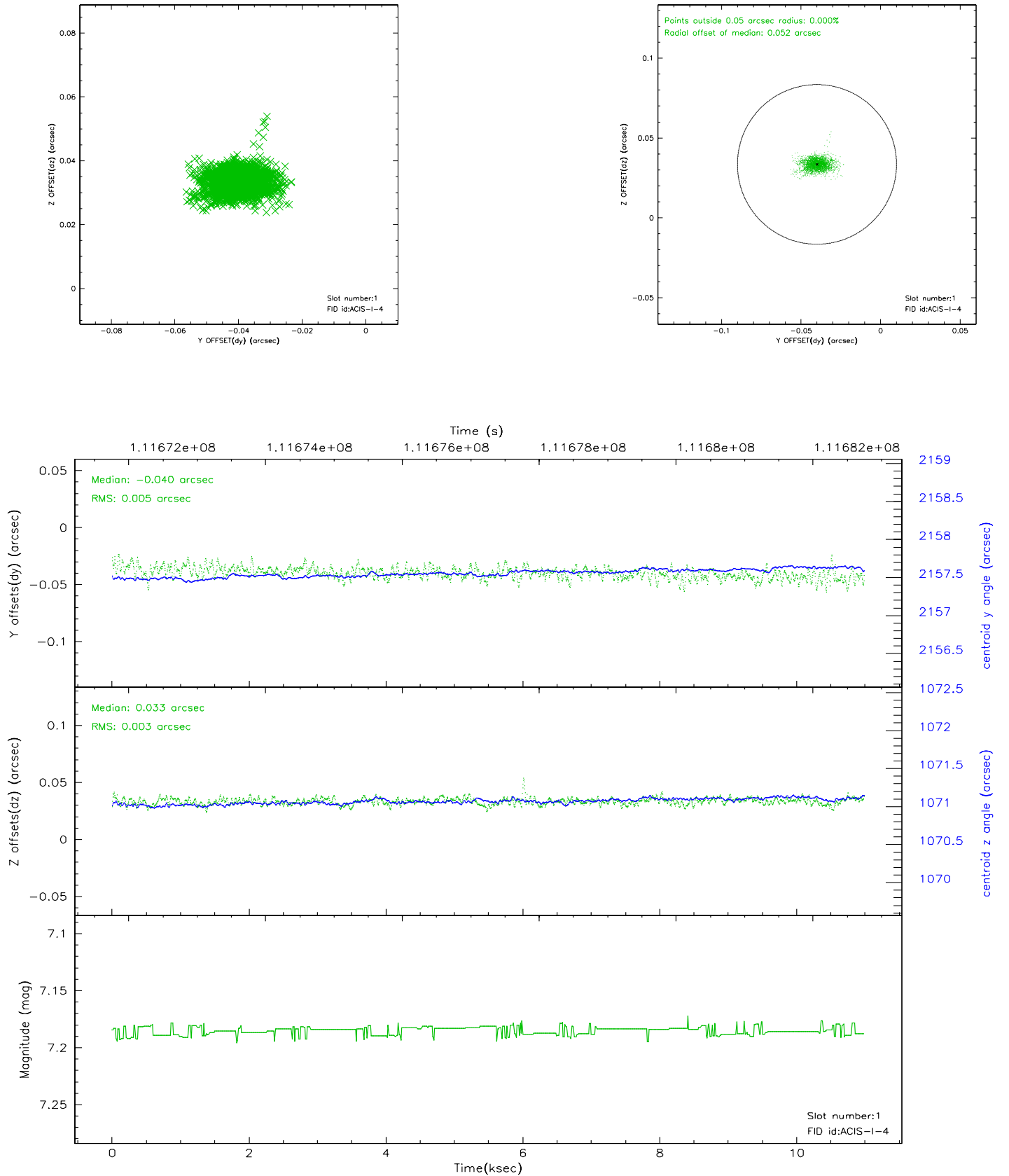


2.5 FID Slots

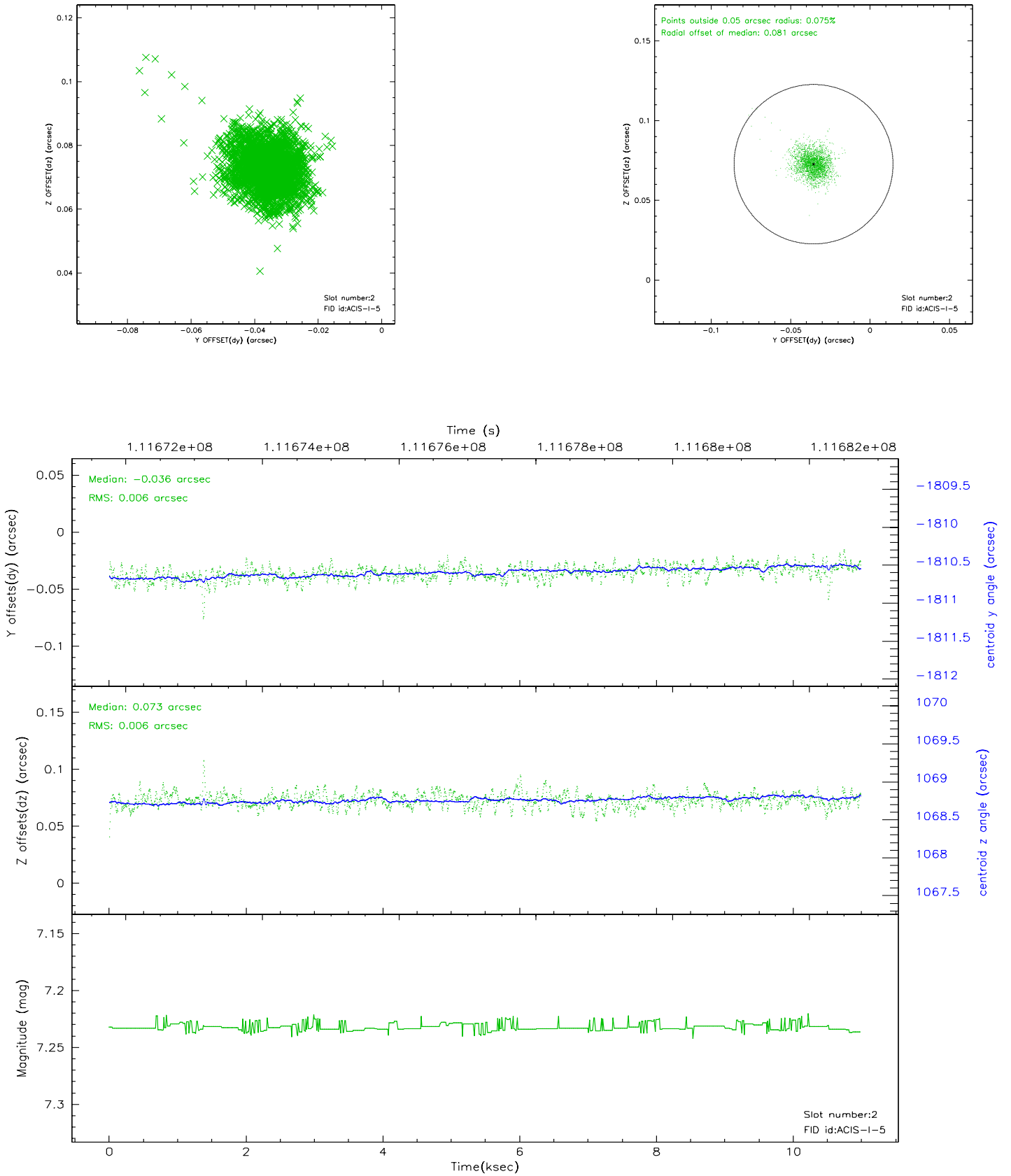
2.5.1 Slot 0



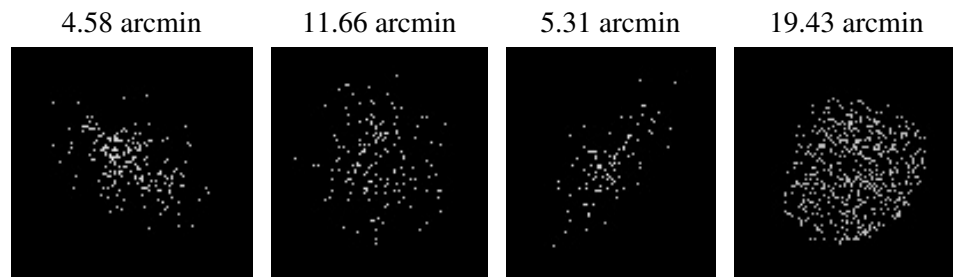
2.5.2 Slot 1



2.5.3 Slot 2



3 Point Sources



A Summary

A.1 Status

V&V Scientist	Jen Lauer
V&V Date (YYYY-MM-DD)	2006.12.14
V&V Edition	1
V&V Disposition and Status	OK
V&V Charge Time	10.6

A.2 Comments

Roll constraint met.