

V&V Reference Report

L2 ASCDS Version : 7.6.10

Observation 3369 - L2 Version 001
Chandra X-Ray Center

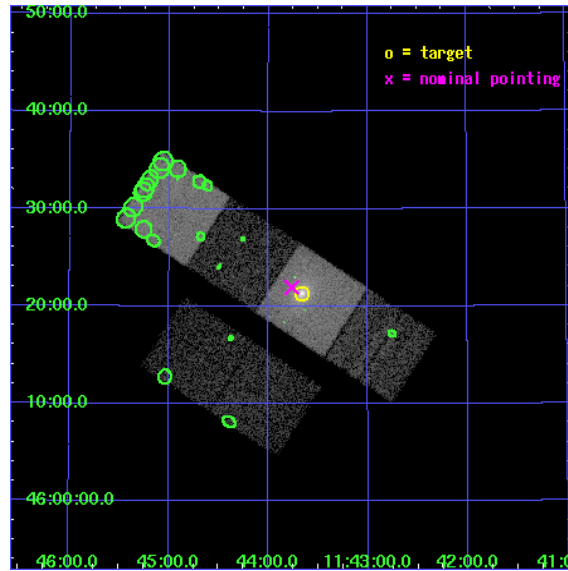
L2 Processing Date : Jan 10 2007

Contents

1	Front	2
2	OBI	3
2.1	OBI	3
2.1.1	Images	3
2.1.2	Bias	3
2.1.3	Parameters	4
2.1.4	Events	4
2.2	Compared Parameters	5
2.3	Aspect	6
2.4	Star Slots	9
2.4.1	Slot 3	9
2.4.2	Slot 4	10
2.4.3	Slot 5	11
2.4.4	Slot 6	12
2.4.5	Slot 7	13
2.5	FID Slots	14
2.5.1	Slot 0	14
2.5.2	Slot 1	15
2.5.3	Slot 2	16
3	Point Sources	17
A	Summary	18
A.1	Status	18
A.2	Comments	18

1 Front

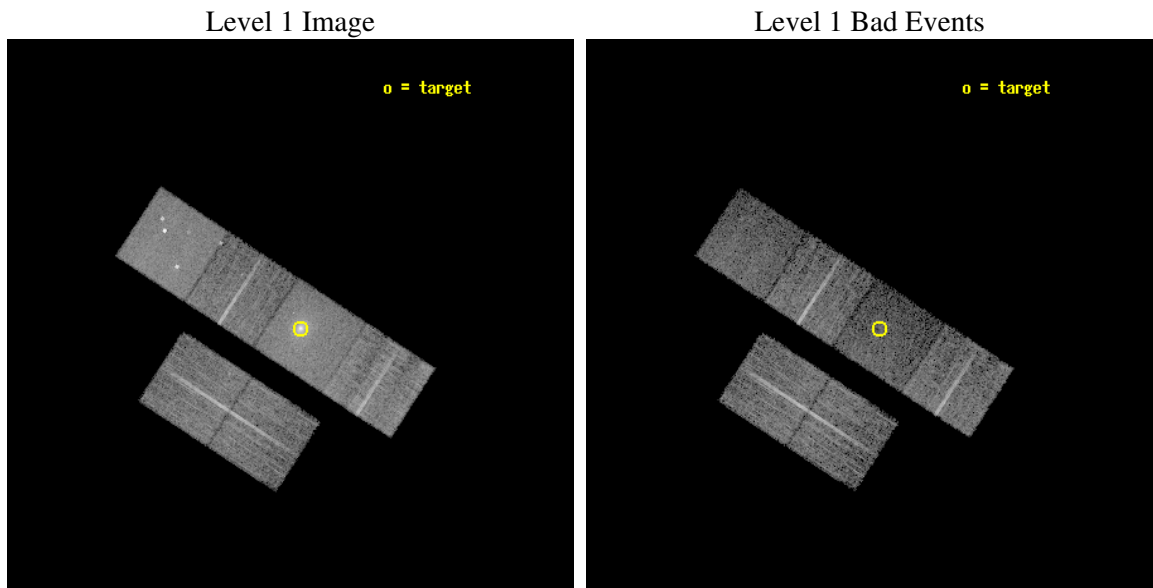
seq_num	800293
obs_id	3369
title	THE INTERACTION BETWEEN RADIO GALAXIES AND ICM IN THE CORES OF CLUSTERS
observer	DR ALASTAIR EDGE
object	A1361
dtcycle	0
cycle	P
ra_targ	175.914583
dec_targ	46.356111
ra_nom	175.94111391107
dec_nom	46.365941537127
roll_nom	33.094509402829
revision	2
ontime	8444.8000078648
livetime	8337.8668653172
ontime2	8444.8000078648
ontime3	8444.8000078648
ontime5	8444.8000078648
ontime6	8444.8000078648
ontime7	8444.8000078648
ontime8	8444.8000078648
l2events	107409



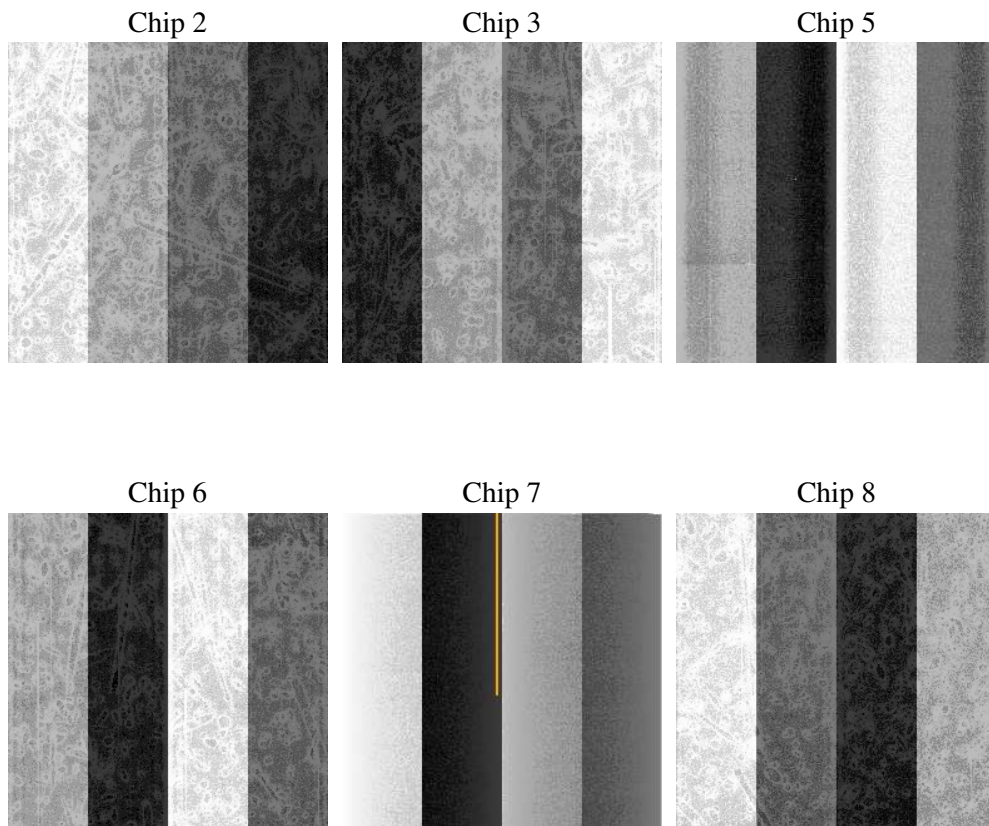
2 OBI

2.1 OBI

2.1.1 Images



2.1.2 Bias



2.1.3 Parameters

obi_num	0
ascdsver	7.6.10
caldsver	3.3.0
date	2007-01-10T15:30:19
revision	2

sched_exp_time	8500.000000
ontime	8444.8000078648
ontime2	8444.8000078648
ontime3	8444.8000078648
ontime5	8444.8000078648
ontime6	8444.8000078648
ontime7	8444.8000078648
ontime8	8444.8000078648
l1events	371788

2.1.4 Events

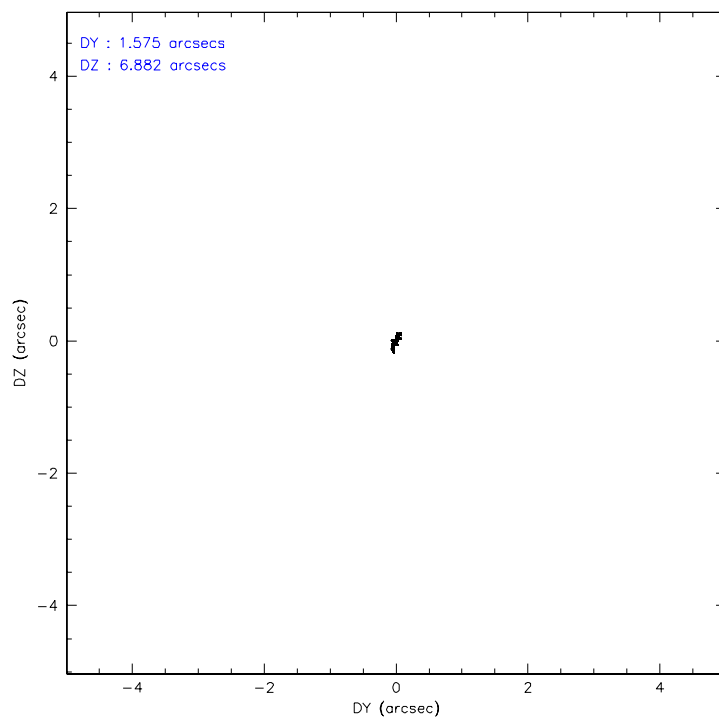
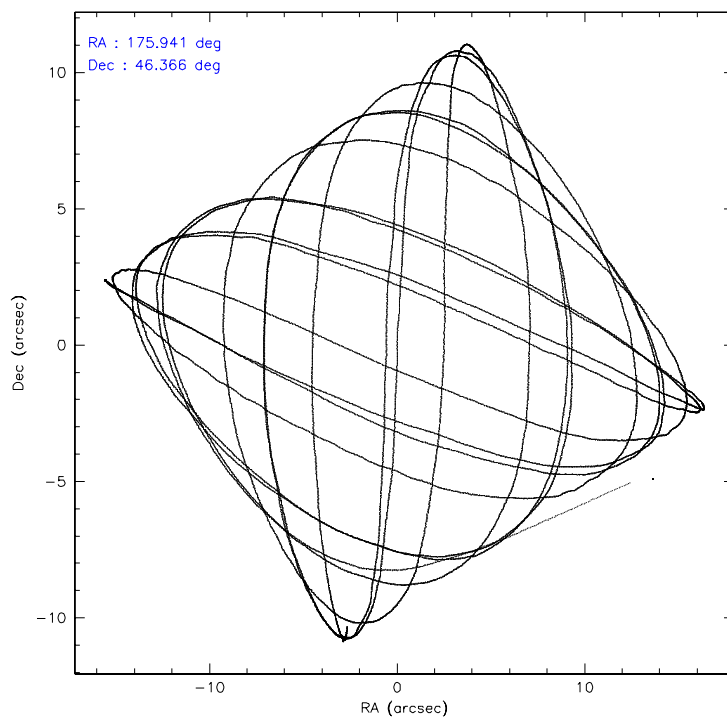
	ccd 2	ccd 3	ccd 5	ccd 6	ccd 7	ccd 8
level 1 events	55993	50589	73566	51325	72976	67339
rejected events	50029	45068	30010	44412	26364	46567
rejected %	89%	89%	40%	86%	36%	69%

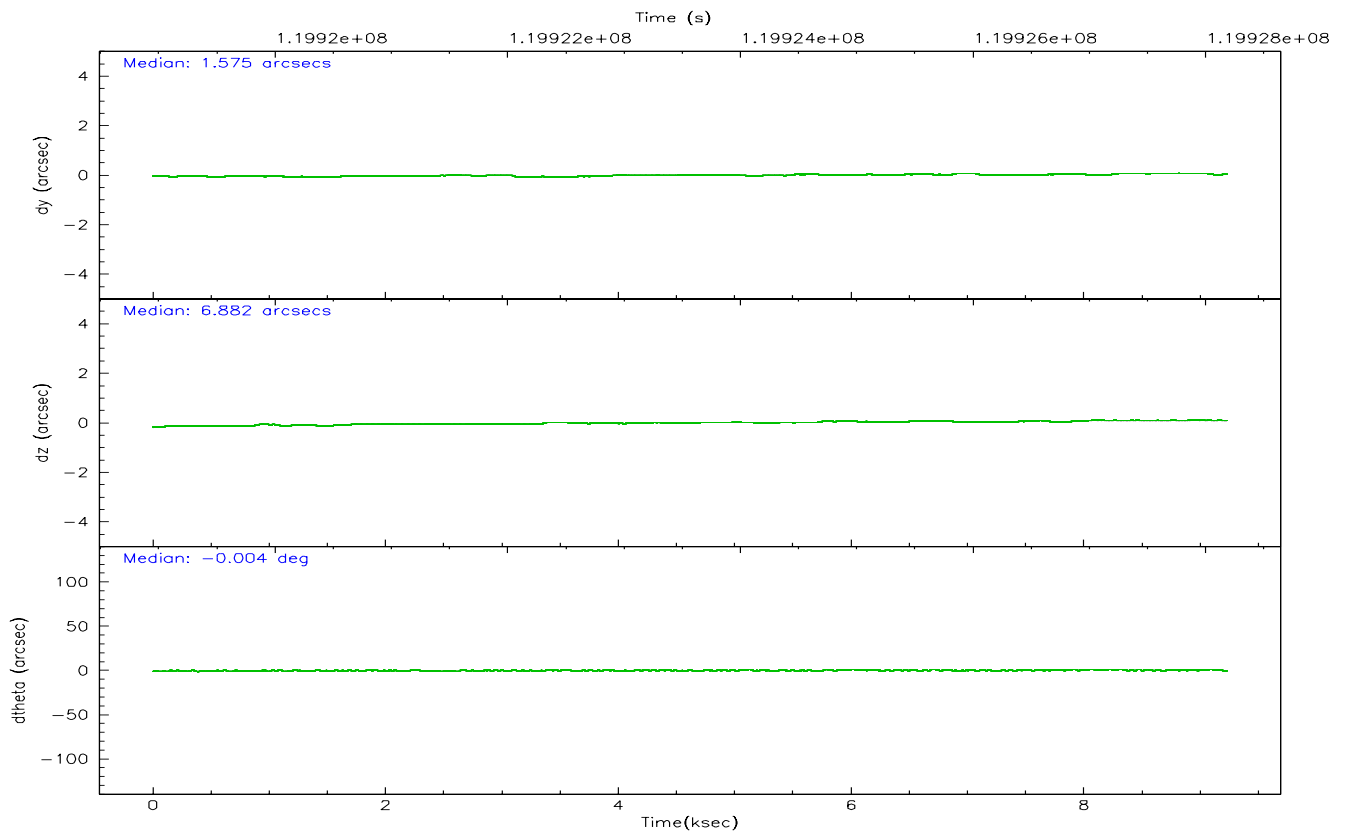
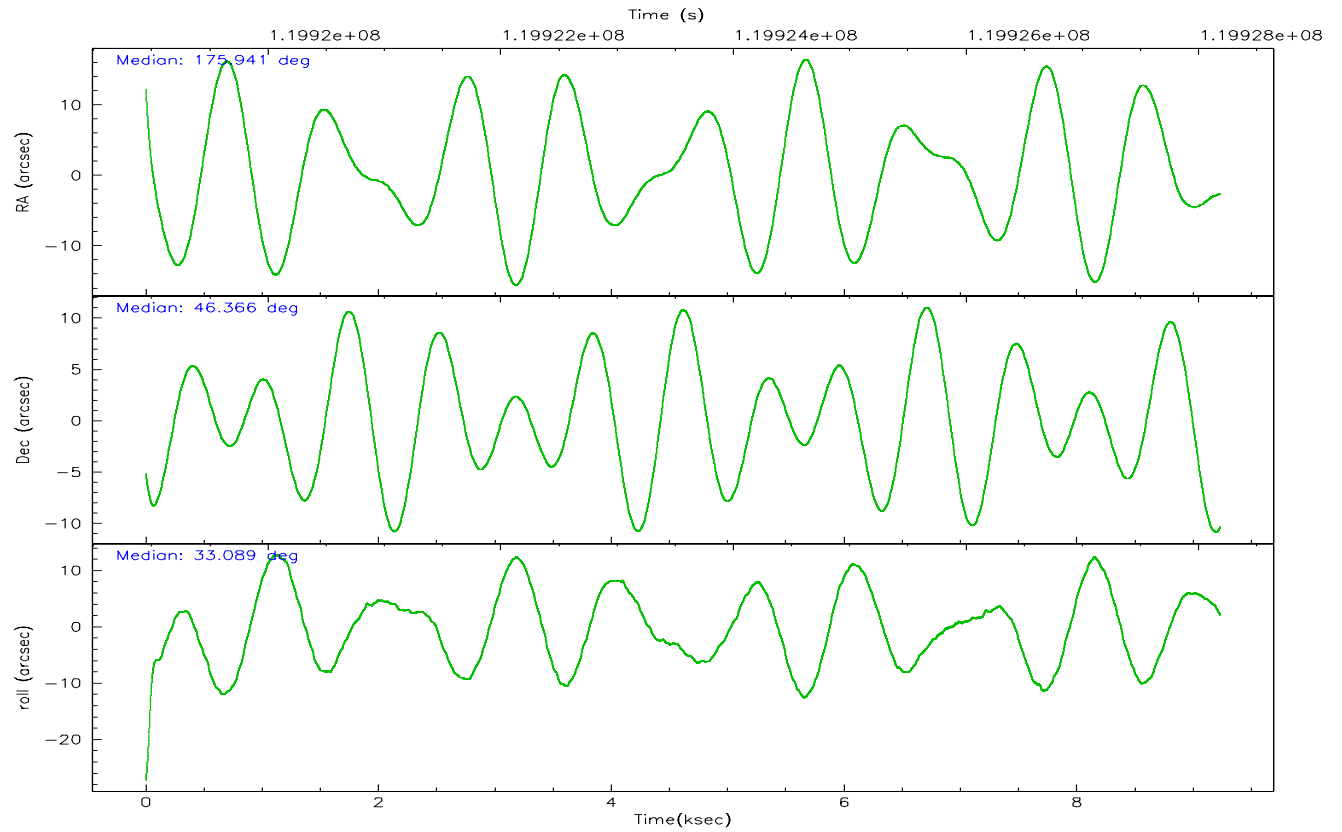
	ccd 2	ccd 3	ccd 5	ccd 6	ccd 7	ccd 8
grade 0 events	2708	2471	8564	3405	7966	7308
	4%	4%	11%	6%	10%	10%
grade 1 events	24	19	111	26	46	54
	0%	0%	0%	0%	0%	0%
grade 2 events	1286	1061	11816	1281	9995	3670
	2%	2%	16%	2%	13%	5%
grade 3 events	529	518	2330	596	4679	2619
	0%	1%	3%	1%	6%	3%
grade 4 events	513	509	2202	591	4478	2481
	0%	1%	2%	1%	6%	3%
grade 5 events	1316	1584	5106	1754	5218	2402
	2%	3%	6%	3%	7%	3%
grade 6 events	950	966	18683	1043	19535	4704
	1%	1%	25%	2%	26%	6%
grade 7 events	48667	43461	24754	42629	21059	44101
	86%	85%	33%	83%	28%	65%

2.2 Compared Parameters

Parameter	Planned	Actual	Parameter	Planned	Actual
Instrument	ACIS	ACIS	Obspar format version number	6	6
Detector	ACIS-235678	ACIS-235678	Obspar file type	PREDICTED	ACTUAL
Grating	NONE	NONE	Obspar update status	NONE	UPDATED
Data mode	VFAINT	VFAINT	Number of optional ACIS chips dropped	0	0
Observation mode	POINTING	POINTING	On-chip summing requested	N	N
Pointing RA	175.923697	175.9411139110726	Subarray requested	NONE	NONE
Pointing Dec	46.341508	46.3659415371272	Alternating exposures requested	N	N
Pointing Roll	32.950502	33.09450940282914	Primary exposure time	0.000000	3.2
SIM focus pos (mm)	-0.684267	-0.6828225247311905			
SIM defocus (mm)	0	0.001444936568705701			
SIM translation stage pos (mm)	-190.132523	-190.1400660498719			
SIM translation stage offset (mm)	0	0.00754346686406393			
Observation start time	119919685.184000	119918445.79715			
Observation start date	2001-10-19T23:00:21	2001-10-19T22:40:45			
Observation end time	119928185.184000	119929118.61008			
Observation end date	2001-10-20T01:22:01	2001-10-20T01:38:38			
Read mode	TIMED	TIMED			

2.3 Aspect



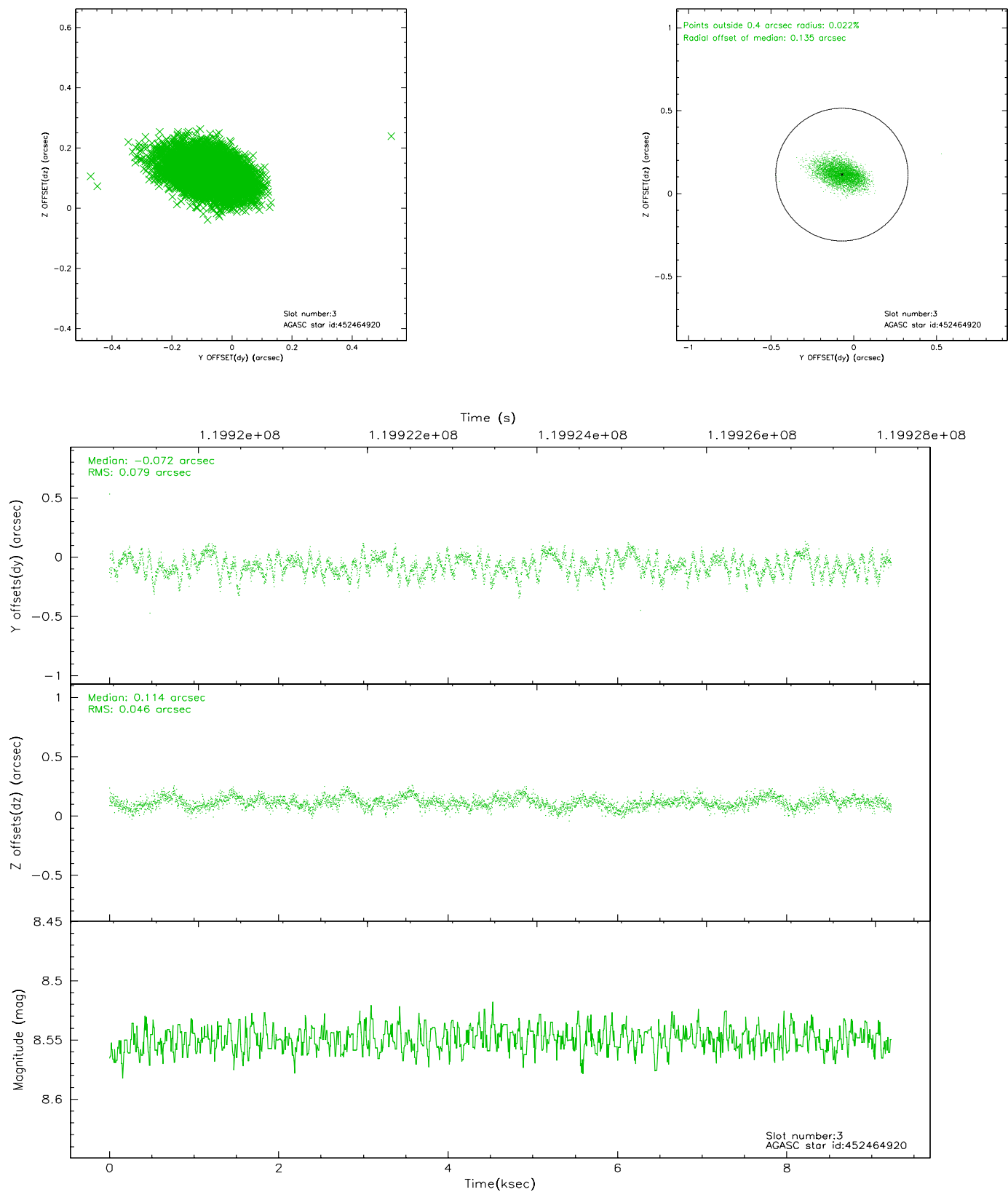


Slot Statistics

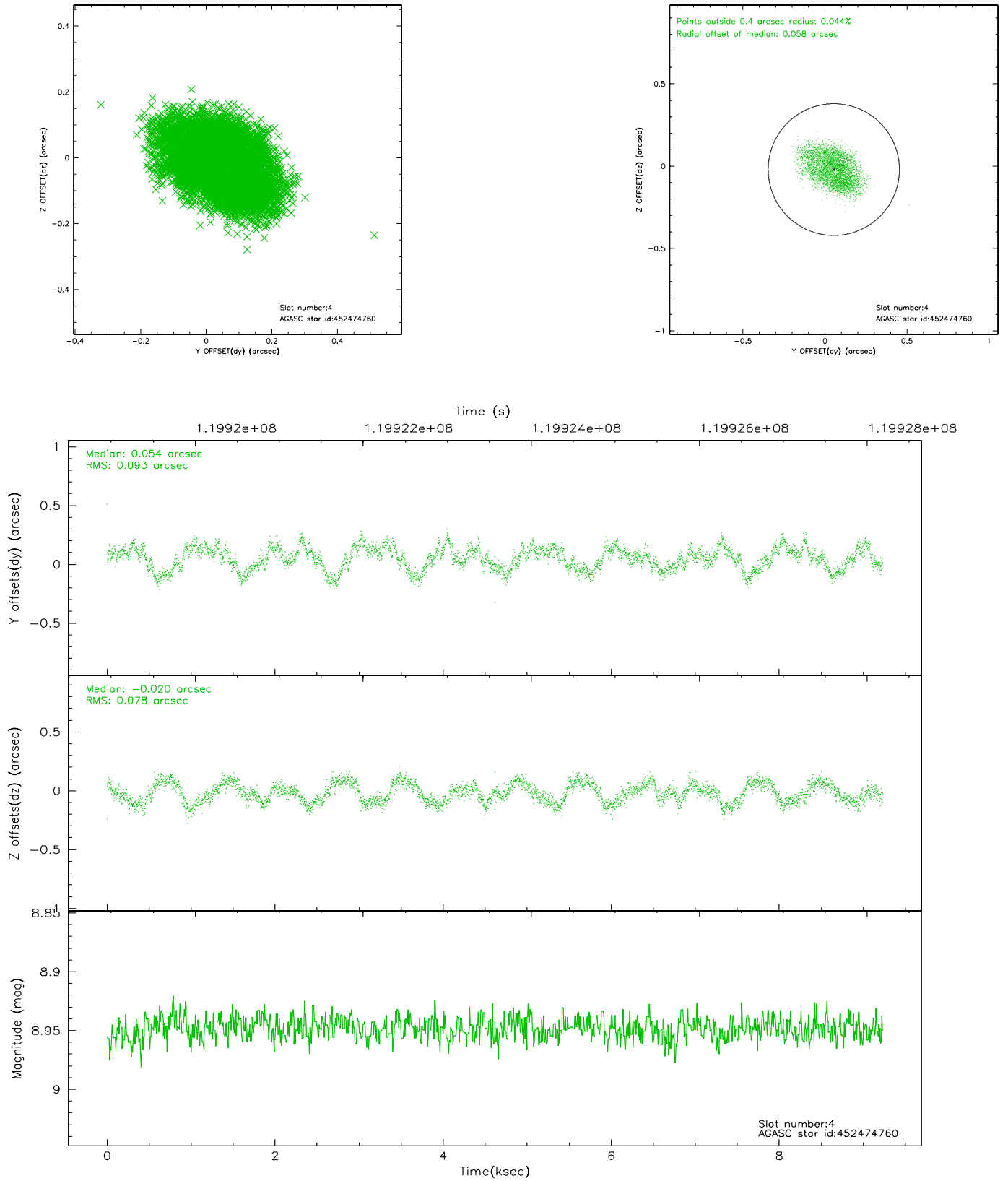
slot	status	id	mag	n_pts	med_dy	med_dz	dr1	dr2	ra	dec	mean_y	mean_z
0	FID	ACIS-S-2	7.11	2252	-0.015	0.029	0.008	0.012	0.000000	0.000000	-754.19	-1728.01
1	FID	ACIS-S-4	7.20	2252	-0.088	-0.000	0.006	0.010	0.000000	0.000000	2158.75	179.84
2	FID	ACIS-S-5	7.24	2252	0.072	-0.019	0.006	0.010	0.000000	0.000000	-1806.19	174.15
3	GUIDE	452464920	8.55	4502	-0.072	0.114	0.096	0.160	177.144945	46.130195	2155.20	-2275.19
4	GUIDE	452474760	8.95	4499	0.054	-0.020	0.131	0.202	175.631749	46.506608	-283.25	893.10
5	GUIDE	452468032	9.83	4496	-0.072	-0.132	0.094	0.161	176.120312	46.601291	916.24	521.26
6	GUIDE	452465552	9.51	4502	-0.155	0.125	0.237	0.356	177.100200	46.202584	2199.15	-1995.11
7	GUIDE	452474296	9.43	4501	0.250	-0.080	0.096	0.157	175.196051	46.137456	-1918.28	377.48

2.4 Star Slots

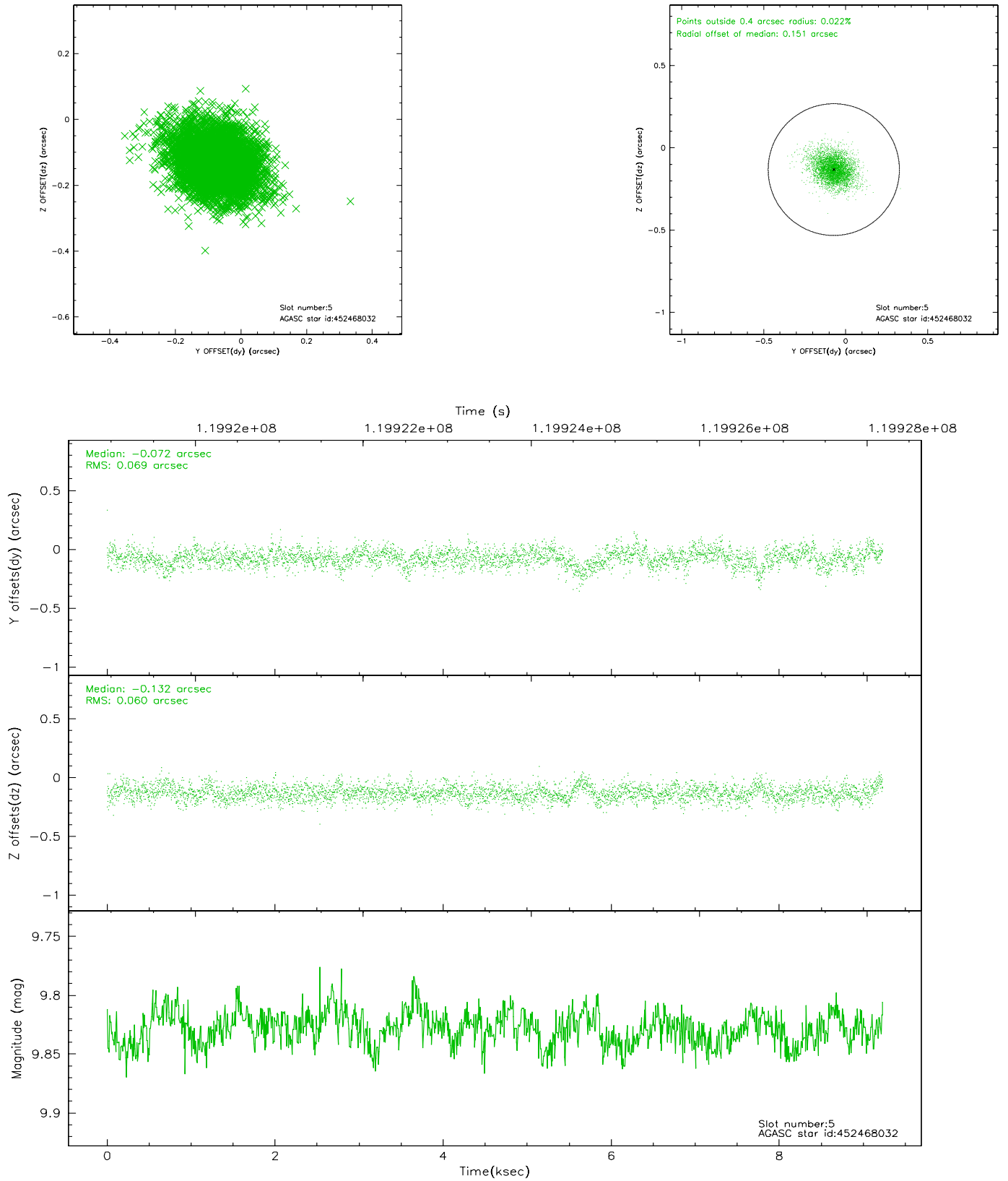
2.4.1 Slot 3



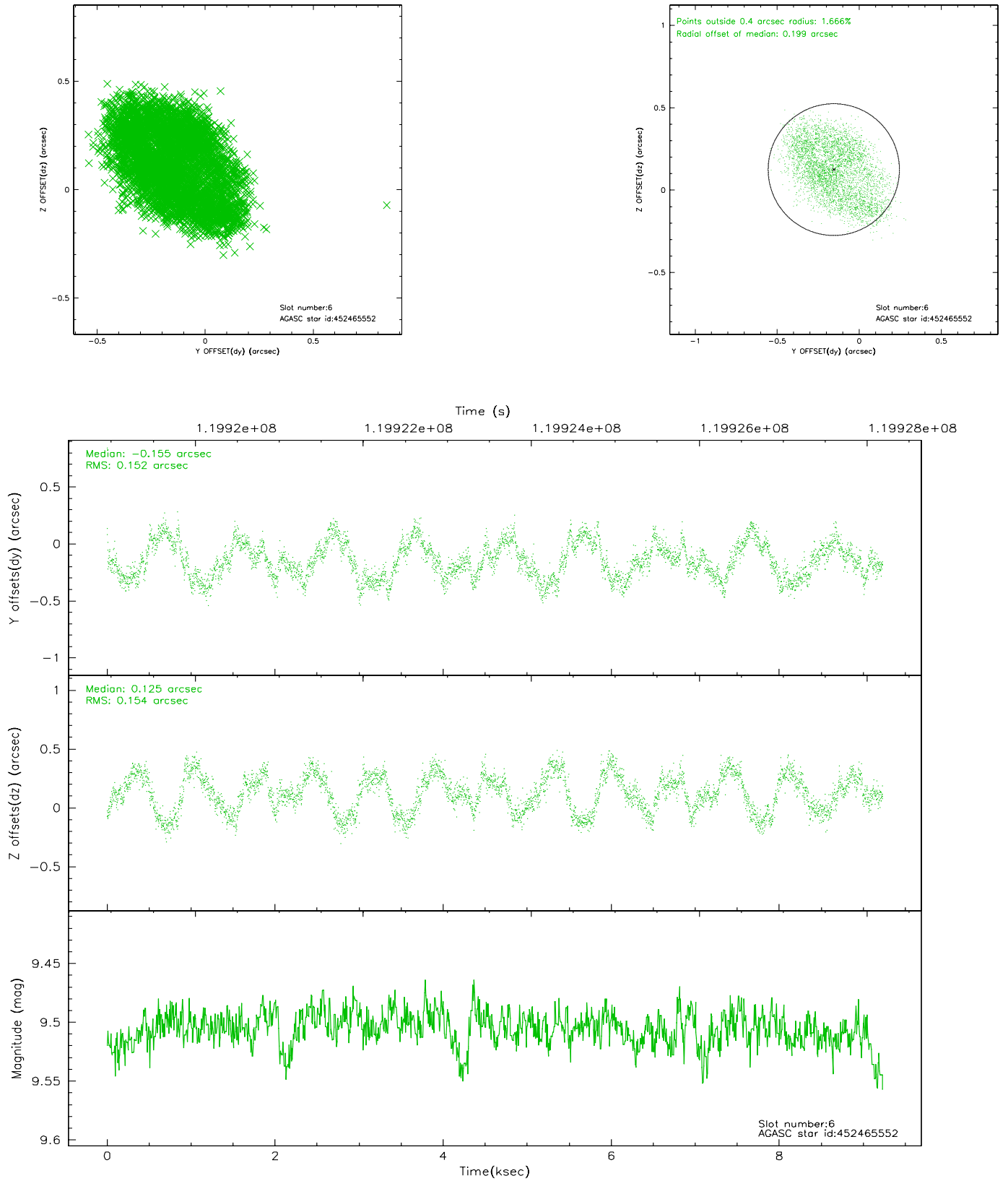
2.4.2 Slot 4



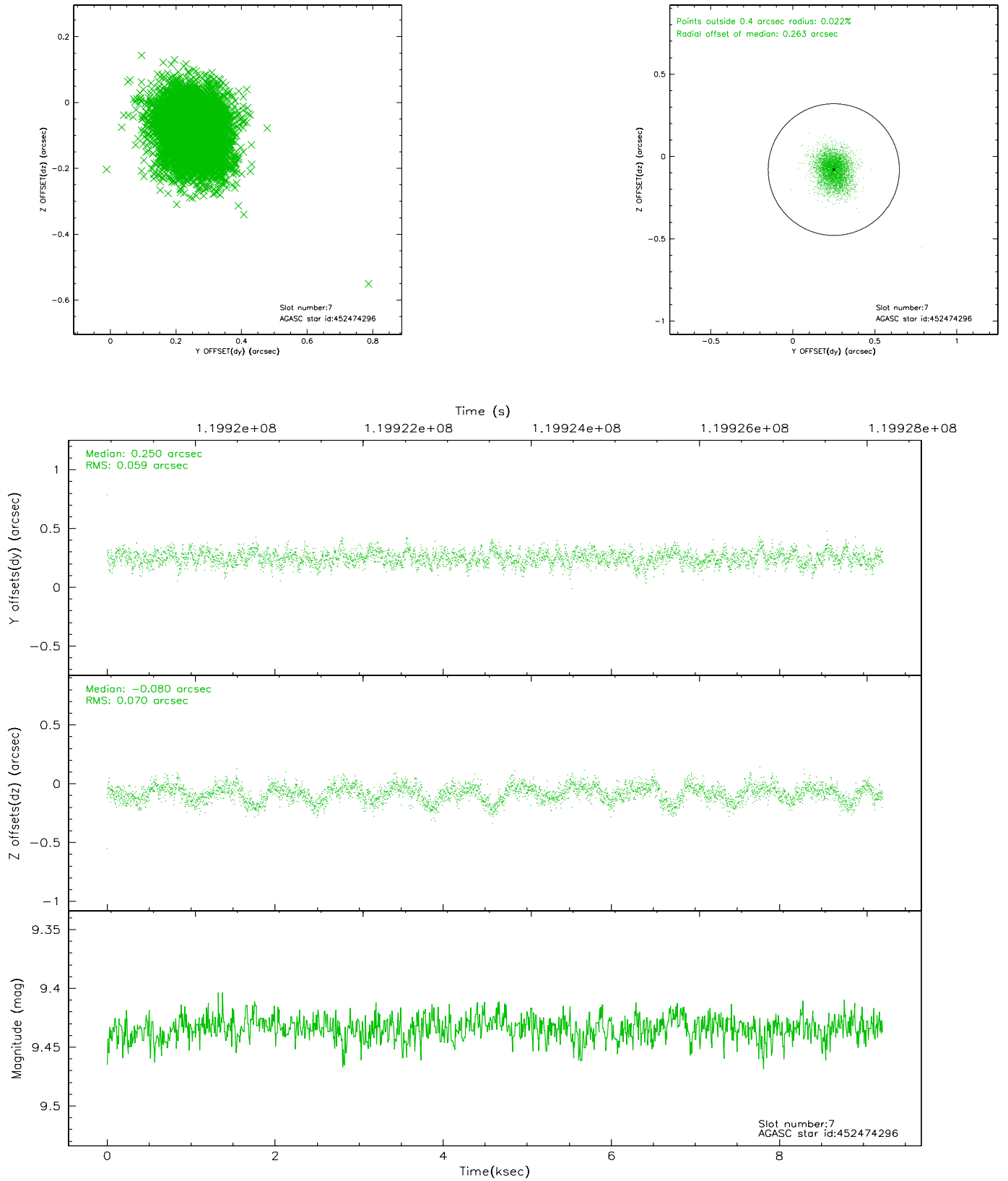
2.4.3 Slot 5



2.4.4 Slot 6

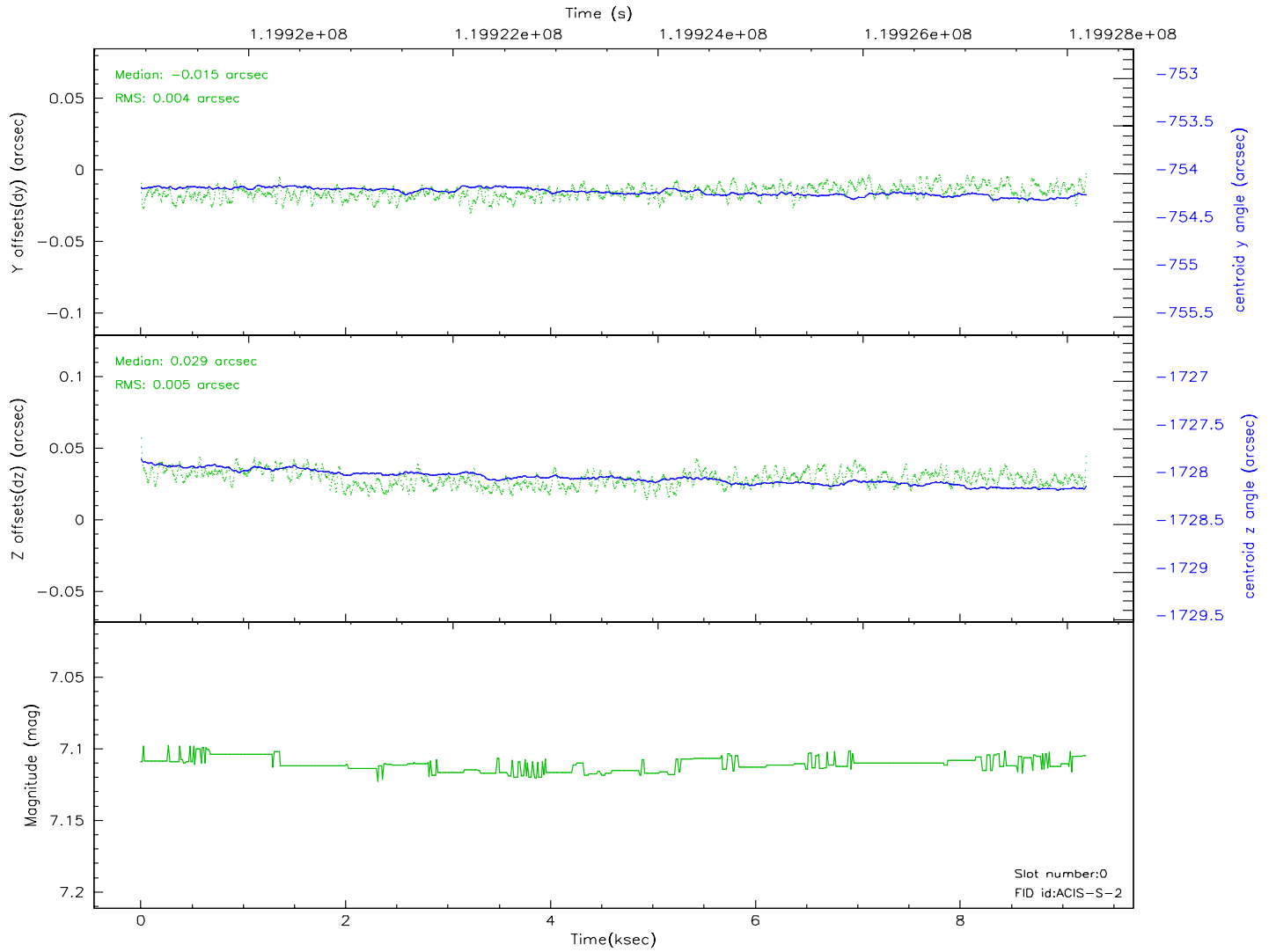
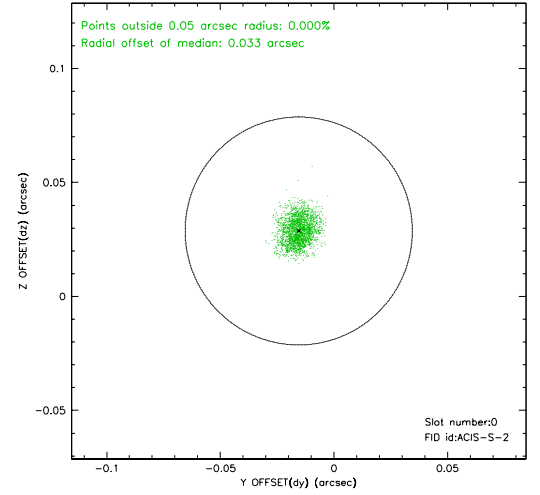
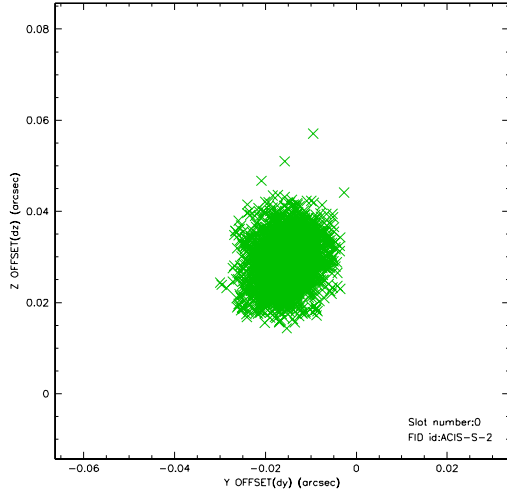


2.4.5 Slot 7

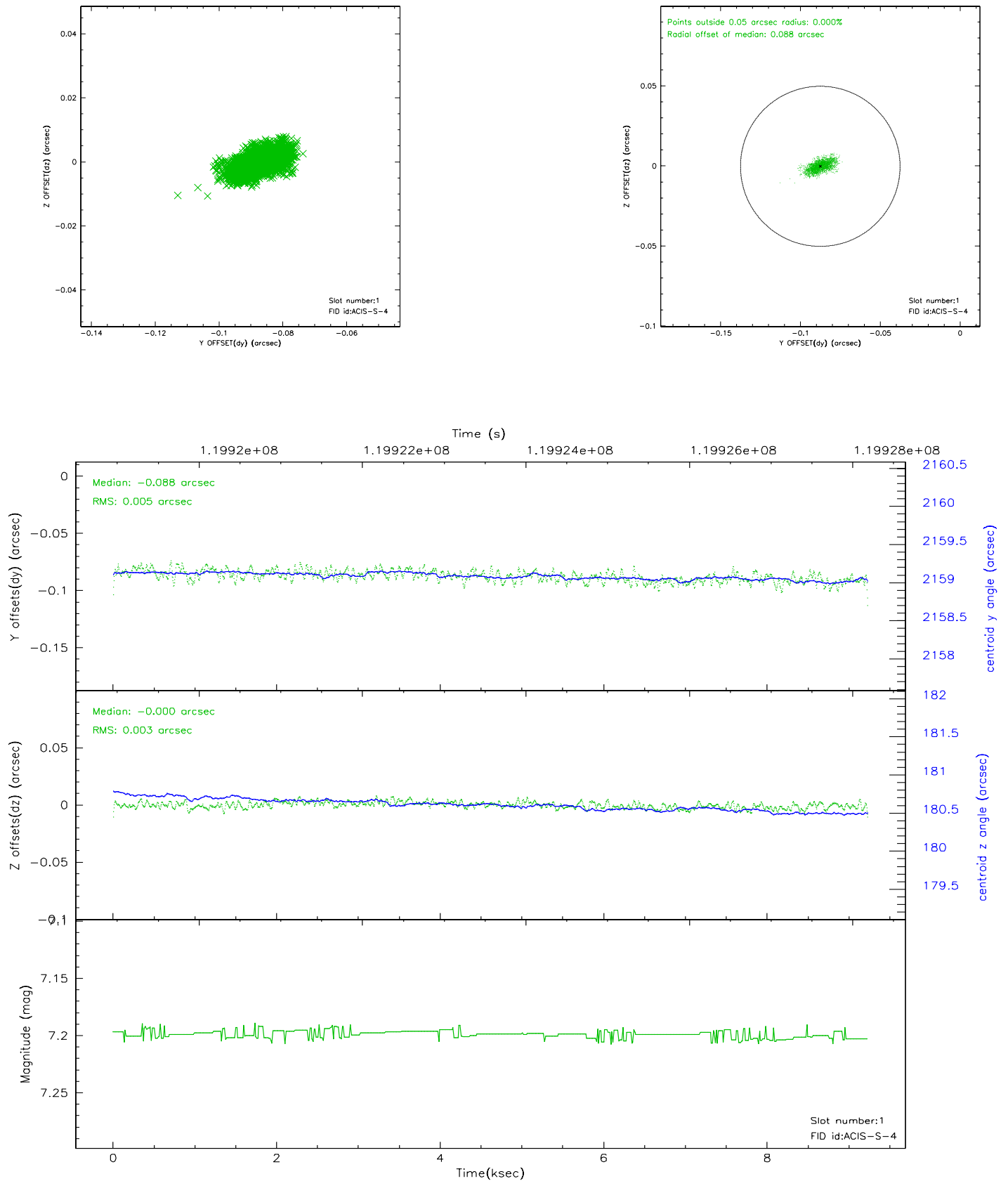


2.5 FID Slots

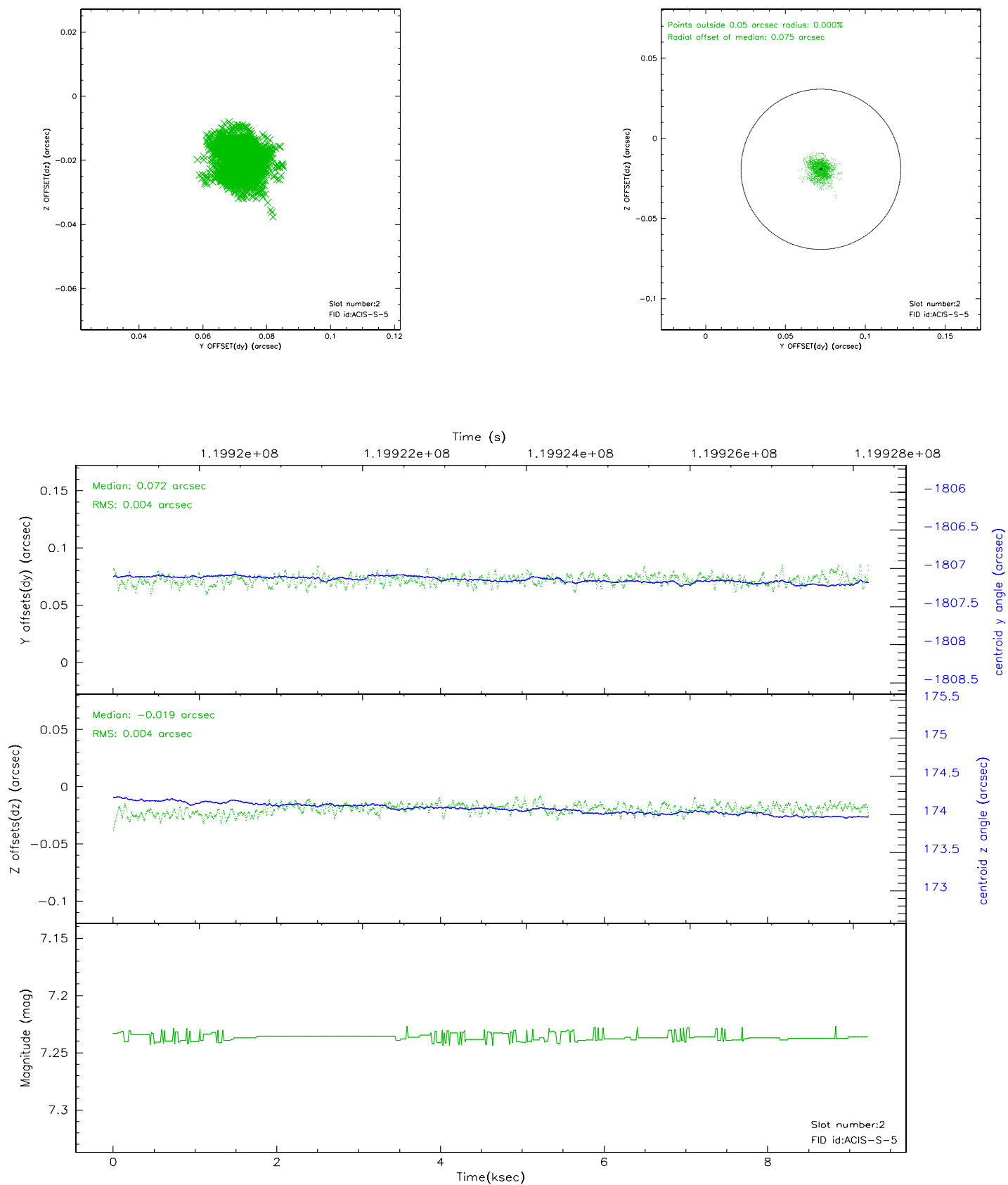
2.5.1 Slot 0



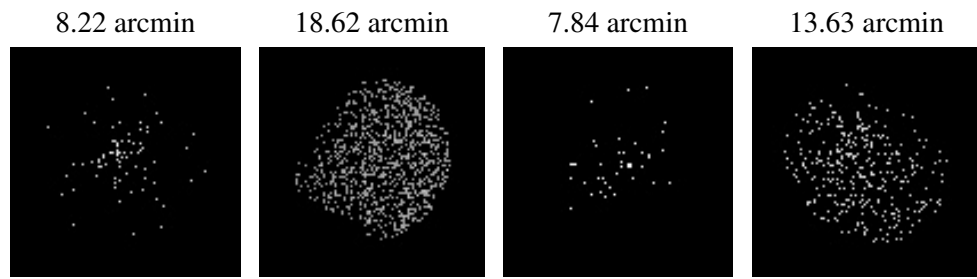
2.5.2 Slot 1



2.5.3 Slot 2



3 Point Sources



A Summary

A.1 Status

V&V Scientist	Jen Lauer
V&V Date (YYYY-MM-DD)	2007.01.10
V&V Edition	1
V&V Disposition and Status	OK
V&V Charge Time	8.448

A.2 Comments