

V&V Reference Report

L2 ASCDS Version : 7.6.9

Observation 2231 - L2 Version 001
Chandra X-Ray Center

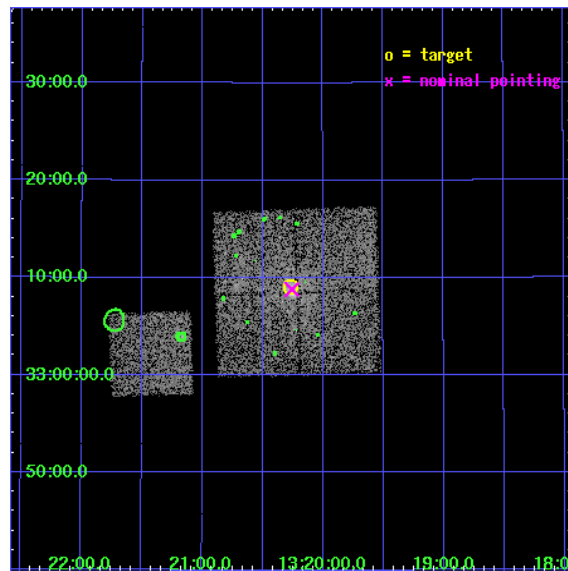
L2 Processing Date : Dec 15 2006

Contents

1	Front	2
2	OBI	3
2.1	OBI	3
2.1.1	Images	3
2.1.2	Bias	3
2.1.3	Parameters	4
2.1.4	Events	4
2.2	Compared Parameters	5
2.3	Aspect	6
2.4	Star Slots	9
2.4.1	Slot 3	9
2.4.2	Slot 4	10
2.4.3	Slot 5	11
2.4.4	Slot 6	12
2.4.5	Slot 7	13
2.5	FID Slots	14
2.5.1	Slot 0	14
2.5.2	Slot 1	15
2.5.3	Slot 2	16
3	Point Sources	17
A	Summary	18
A.1	Status	18
A.2	Comments	18

1 Front

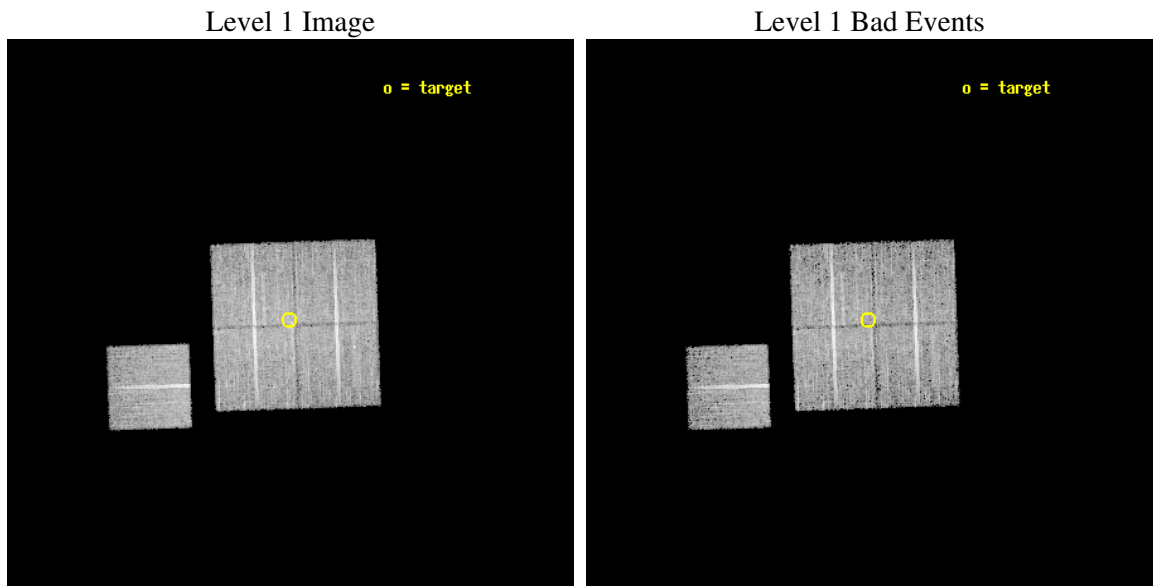
seq_num	800170
obs_id	2231
title	SURVEY OF HARD POINT SOURCES IN GROUPS OF GALAXIES
observer	DR YASUSHI FUKAZAWA
object	RGH80
dtcycle	0
cycle	P
ra_targ	200.066667
dec_targ	33.151111
ra_nom	200.06428571858
dec_nom	33.146854339897
roll_nom	268.08504720099
revision	2
ontime	11104.19997865
livetime	10959.115431135
ontime0	11101.058988497
ontime1	11104.19997865
ontime2	11101.059018403
ontime3	11104.19997865
ontime6	11101.058988482
l2events	28857



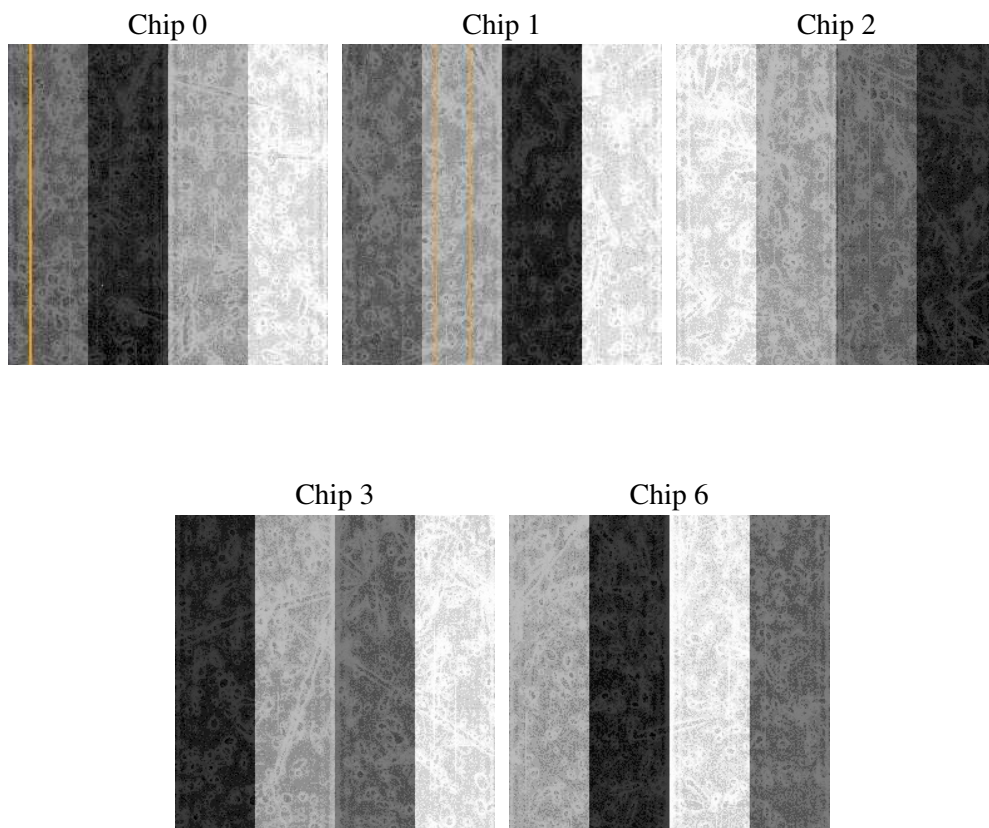
2 OBI

2.1 OBI

2.1.1 Images



2.1.2 Bias



2.1.3 Parameters

obi_num	0
ascdsver	7.6.9
caldbver	3.2.4
date	2006-12-16T03:02:30
revision	2

sched_exp_time	11000.000000
ontime	11891.820678115
ontime0	11888.679687962
ontime1	11891.820678115
ontime2	11888.679717869
ontime3	11891.820678115
ontime6	11888.679717883
llevents	329951

2.1.4 Events

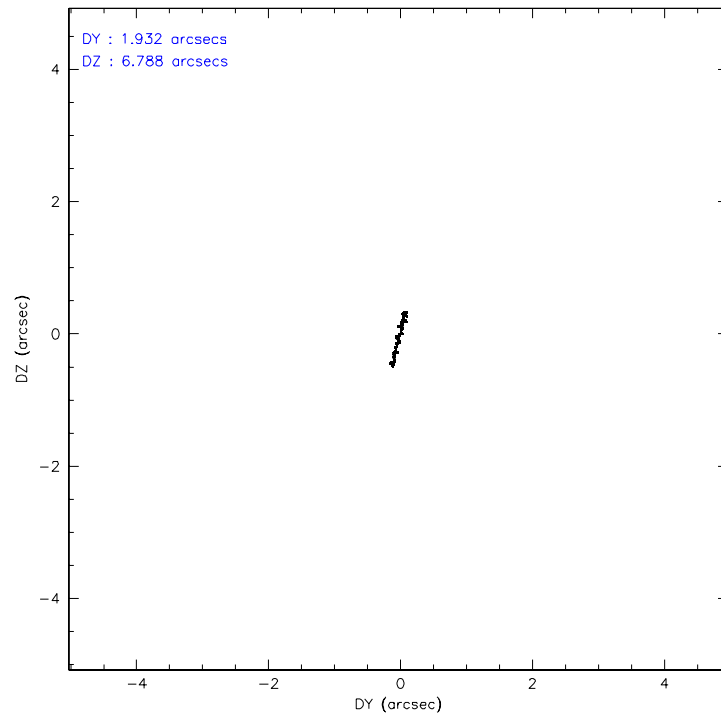
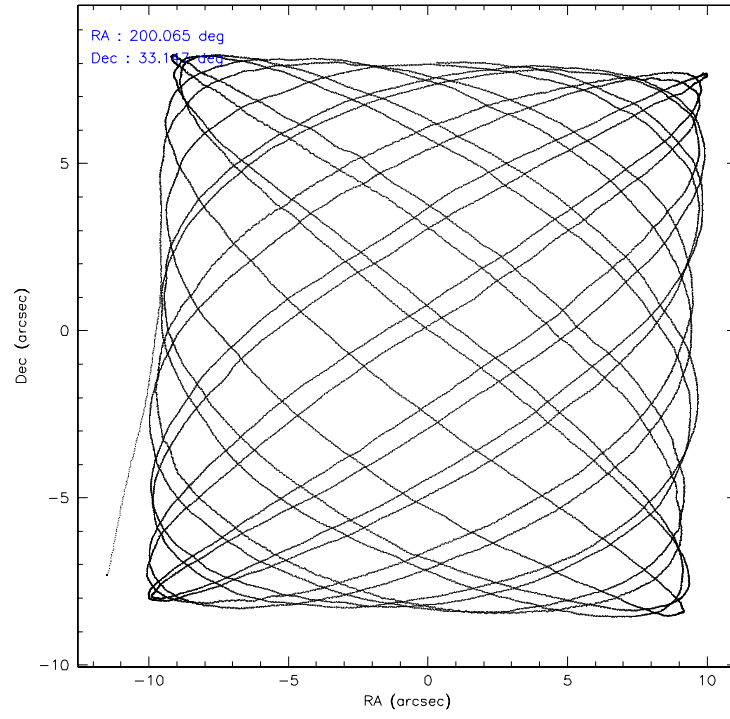
	ccd 0	ccd 1	ccd 2	ccd 3	ccd 6
level 1 events	61874	61481	71418	69095	66083
rejected events	55144	54185	64674	61686	59939
rejected %	89%	88%	90%	89%	90%

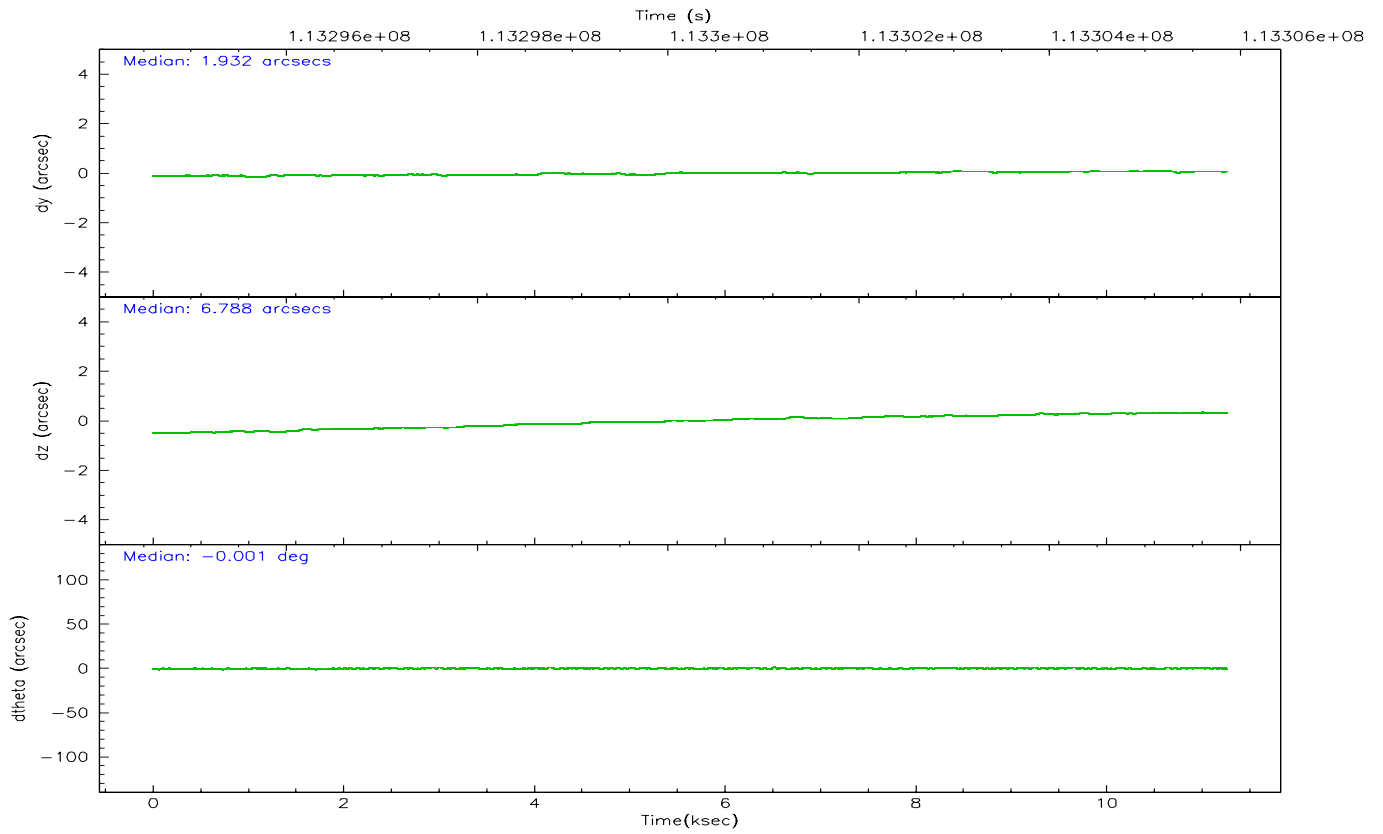
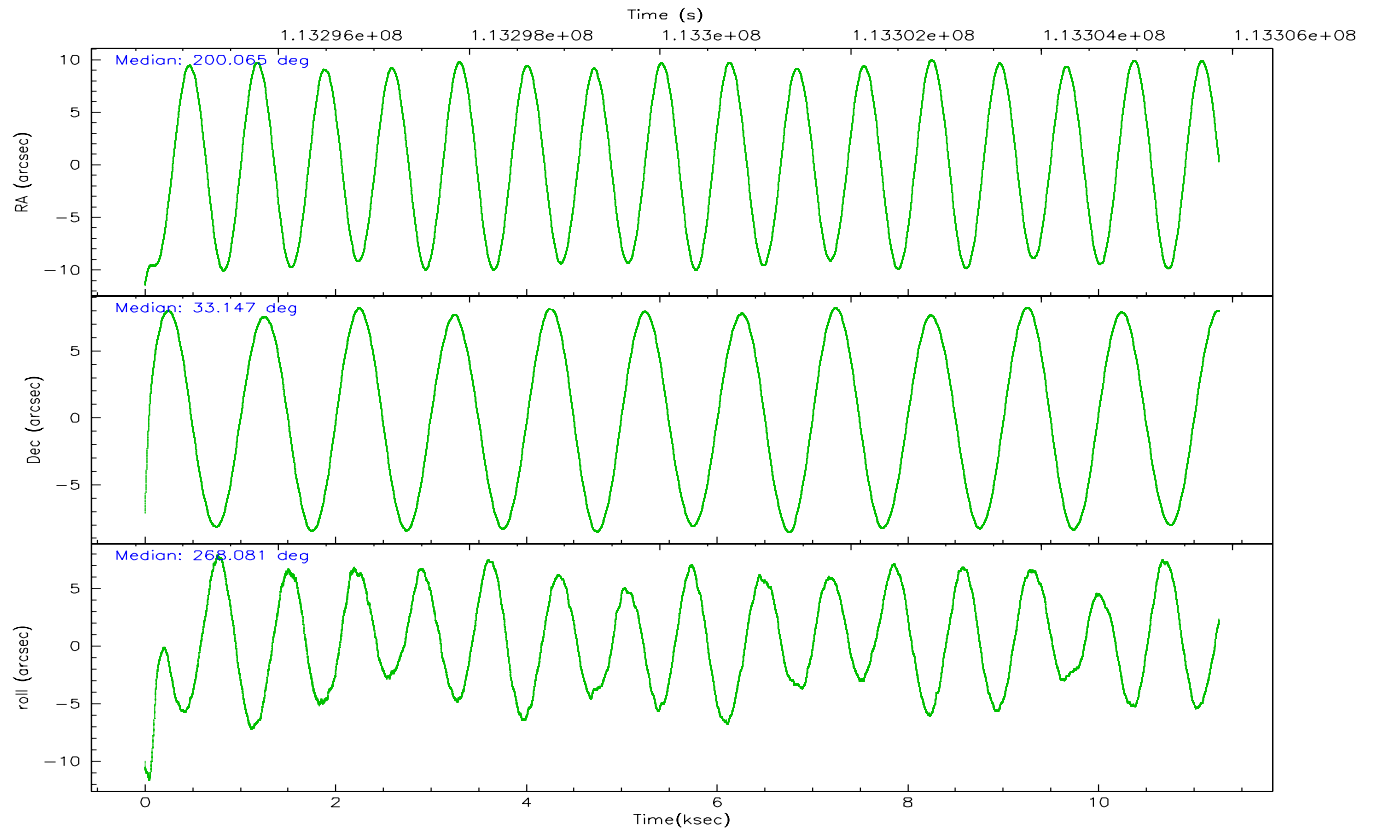
	ccd 0	ccd 1	ccd 2	ccd 3	ccd 6
grade 0 events	3070	3282	3152	3858	2404
	4%	5%	4%	5%	3%
grade 1 events	28	25	30	36	32
	0%	0%	0%	0%	0%
grade 2 events	1453	1460	1530	1451	1323
	2%	2%	2%	2%	2%
grade 3 events	770	857	729	736	785
	1%	1%	1%	1%	1%
grade 4 events	687	817	705	651	742
	1%	1%	0%	0%	1%
grade 5 events	1962	2191	1928	2208	2321
	3%	3%	2%	3%	3%
grade 6 events	1195	1391	1122	1192	1334
	1%	2%	1%	1%	2%
grade 7 events	52709	51458	62222	58963	57142
	85%	83%	87%	85%	86%

2.2 Compared Parameters

Parameter	Planned	Actual	Parameter	Planned	Actual
Instrument	ACIS	ACIS	Obspar format version number	6	6
Detector	ACIS-01236	ACIS-01236	Obspar file type	PREDICTED	ACTUAL
Grating	NONE	NONE	Obspar update status	NONE	UPDATED
Data mode	VFAINT	VFAINT	Number of optional ACIS chips dropped	0	0
Observation mode	POINTING	POINTING	On-chip summing requested	N	N
Pointing RA	200.048820	200.0642857185825	Subarray requested	NONE	NONE
Pointing Dec	33.171016	33.14685433989679	Alternating exposures requested	N	N
Pointing Roll	267.884828	268.0850472009858	Primary exposure time	0.000000	3.1
SIM focus pos (mm)	-0.782348	-0.7809083437167272			
SIM defocus (mm)	0	0.001439871863259334			
SIM translation stage pos (mm)	-233.592463	-233.5874344608287			
SIM translation stage offset (mm)	0	-0.005018542100998502			
Observation start time	113294709.184000	113293357.52267			
Observation start date	2001-08-04T06:44:05	2001-08-04T06:22:37			
Observation end time	113305709.184000	113306181.81067			
Observation end date	2001-08-04T09:47:25	2001-08-04T09:56:21			
Read mode	TIMED	TIMED			

2.3 Aspect



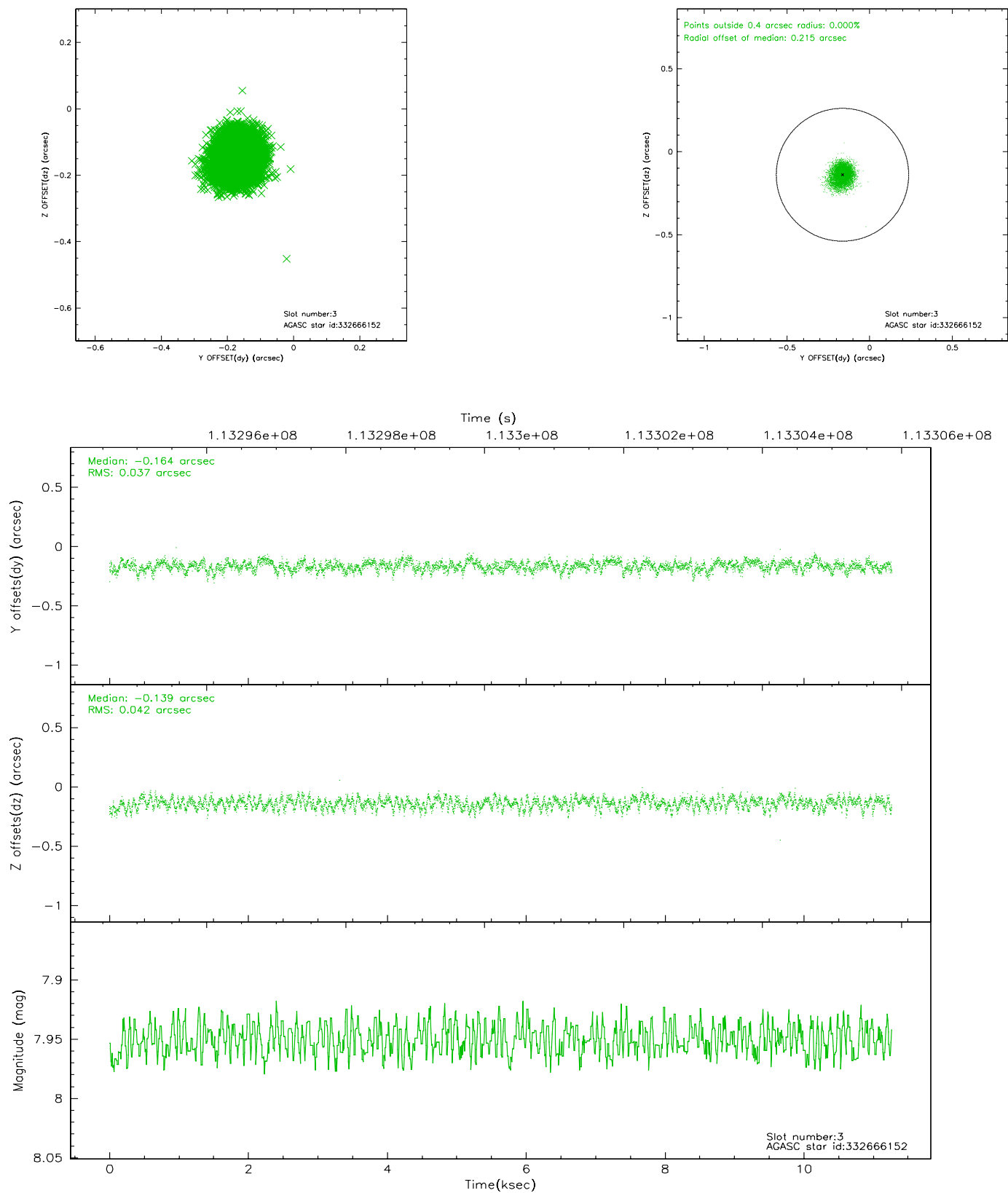


Slot Statistics

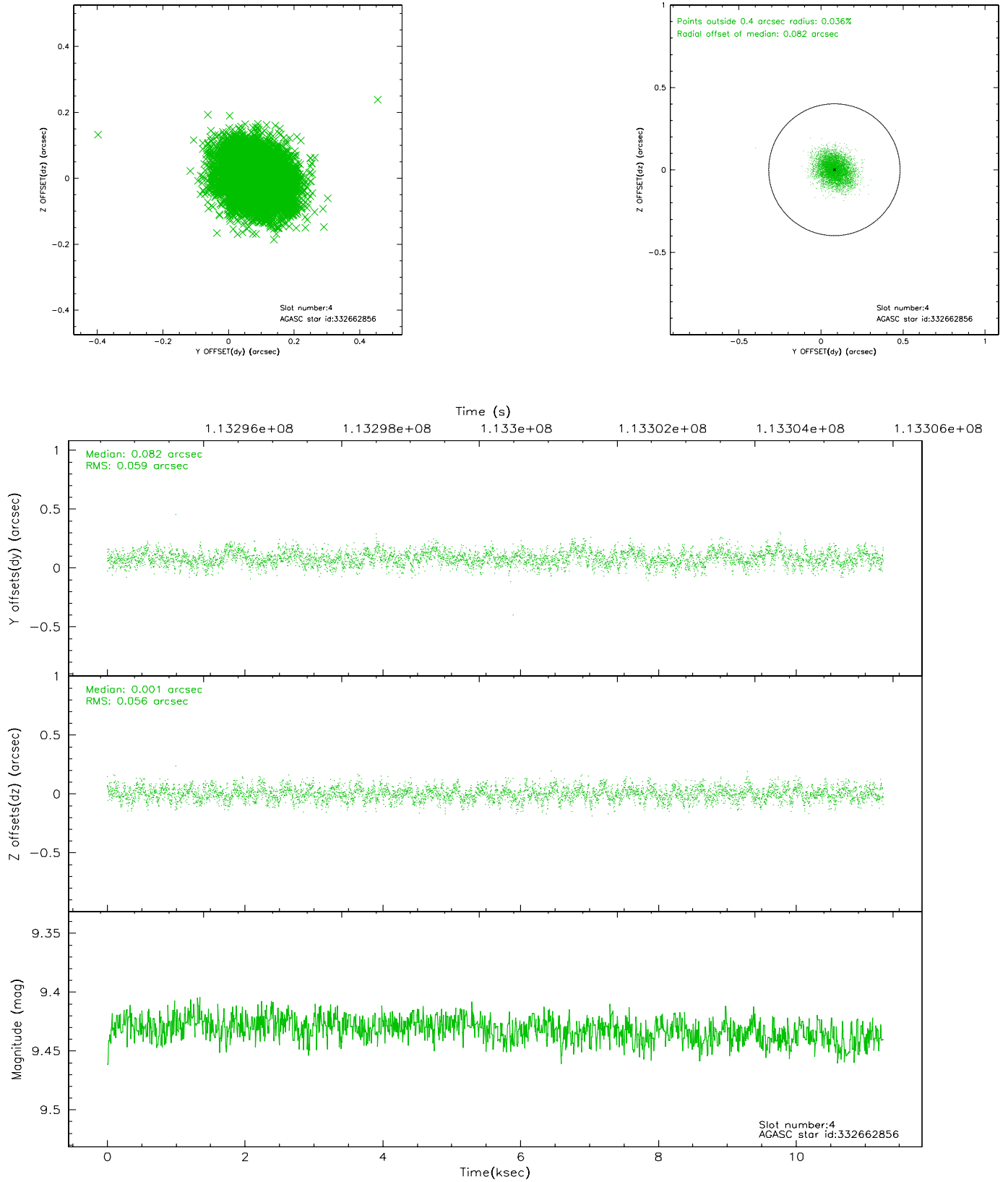
slot	status	id	mag	n_pts	med_dy	med_dz	dr1	dr2	ra	dec	mean_y	mean_z
0	FID	ACIS-I-1	7.25	2746	-0.023	0.044	0.008	0.012	0.000000	0.000000	937.86	-830.12
1	FID	ACIS-I-5	7.24	2747	-0.012	0.044	0.007	0.012	0.000000	0.000000	-1809.94	1067.20
2	FID	ACIS-I-6	7.27	2747	-0.056	-0.017	0.011	0.017	0.000000	0.000000	402.94	1712.11
3	GUIDE	332666152	7.95	5496	-0.164	-0.139	0.061	0.096	199.716427	33.438695	-926.99	-1034.68
4	GUIDE	332662856	9.43	5497	0.082	0.001	0.087	0.140	200.000182	32.747147	1531.05	-91.88
5	GUIDE	332663448	9.81	5497	0.060	-0.012	0.119	0.201	199.590906	32.849009	1207.83	-1342.27
6	GUIDE	332668240	9.94	5496	-0.112	0.068	0.128	0.213	200.683713	33.779536	-2264.34	1816.19
7	GUIDE	332662584	9.88	5492	0.138	0.079	0.117	0.190	200.586294	32.545213	2187.38	1712.51

2.4 Star Slots

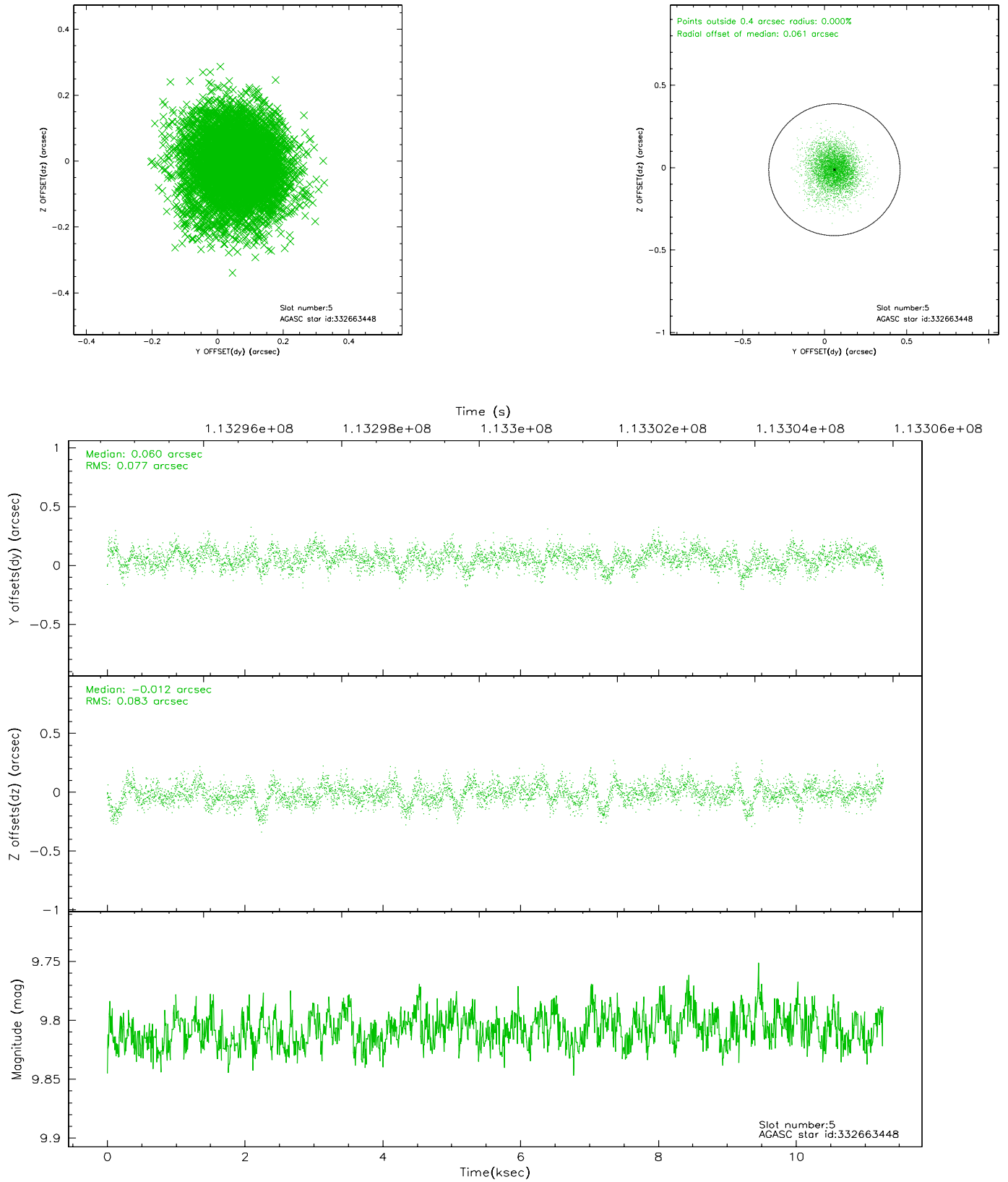
2.4.1 Slot 3



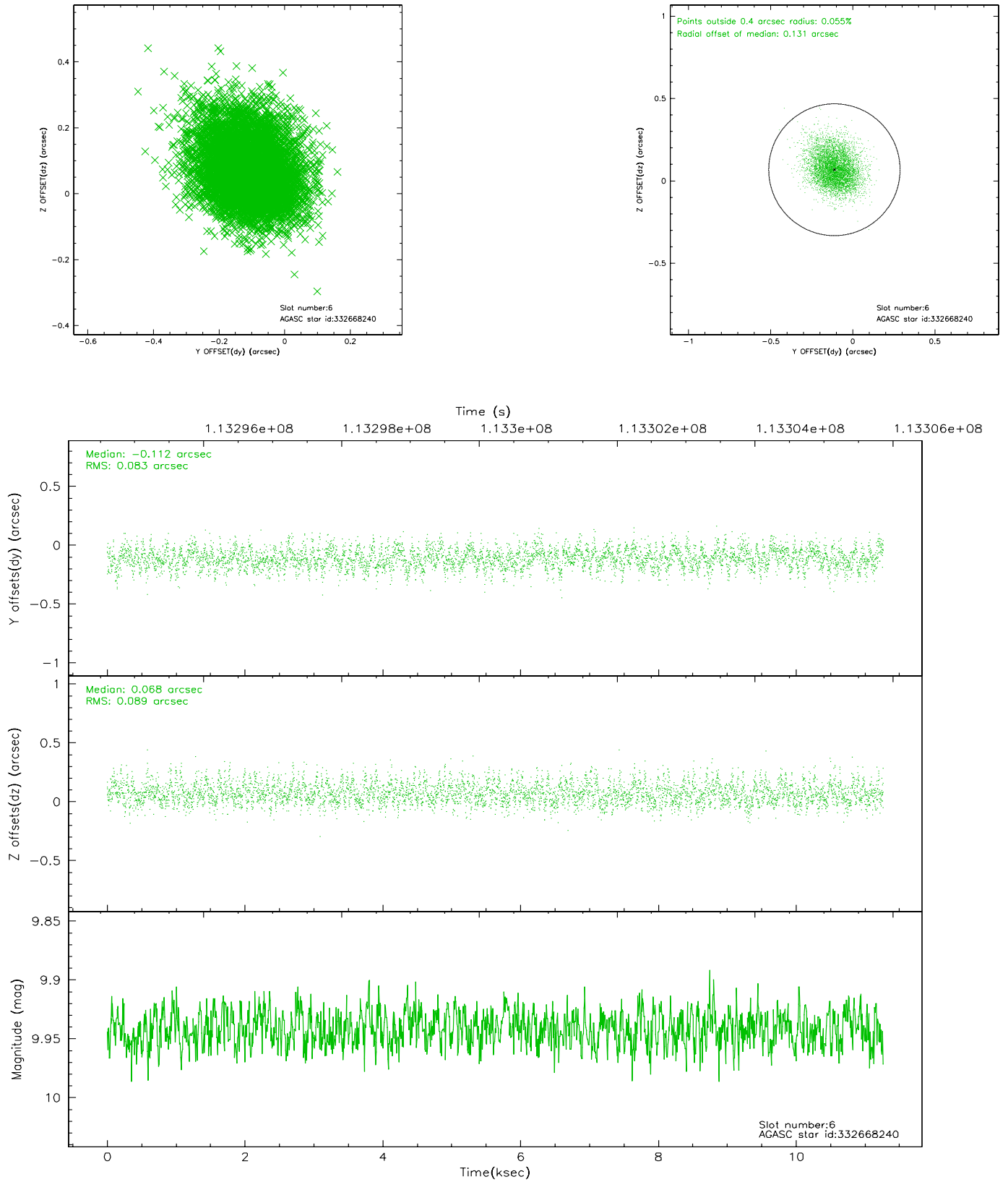
2.4.2 Slot 4



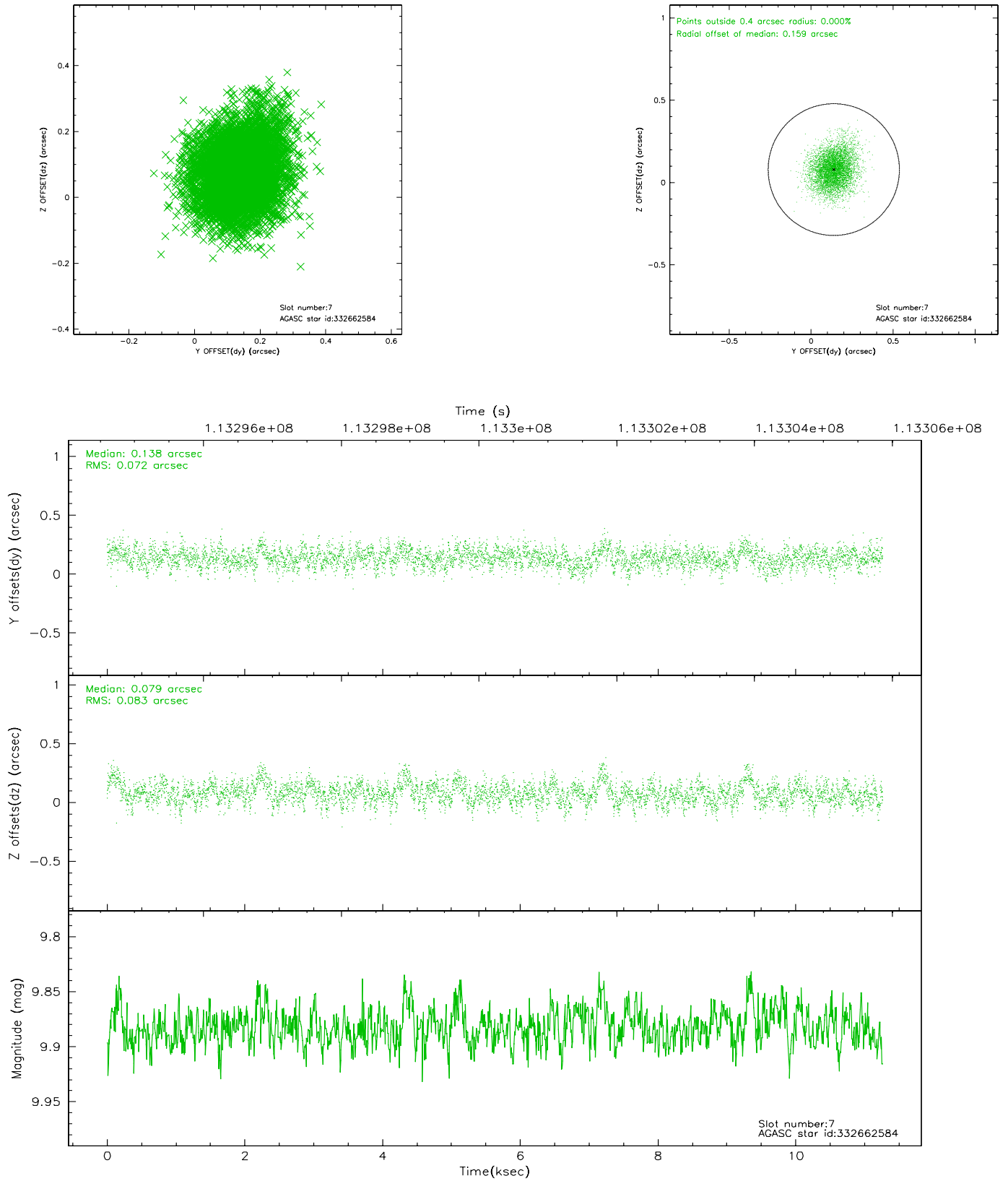
2.4.3 Slot 5



2.4.4 Slot 6

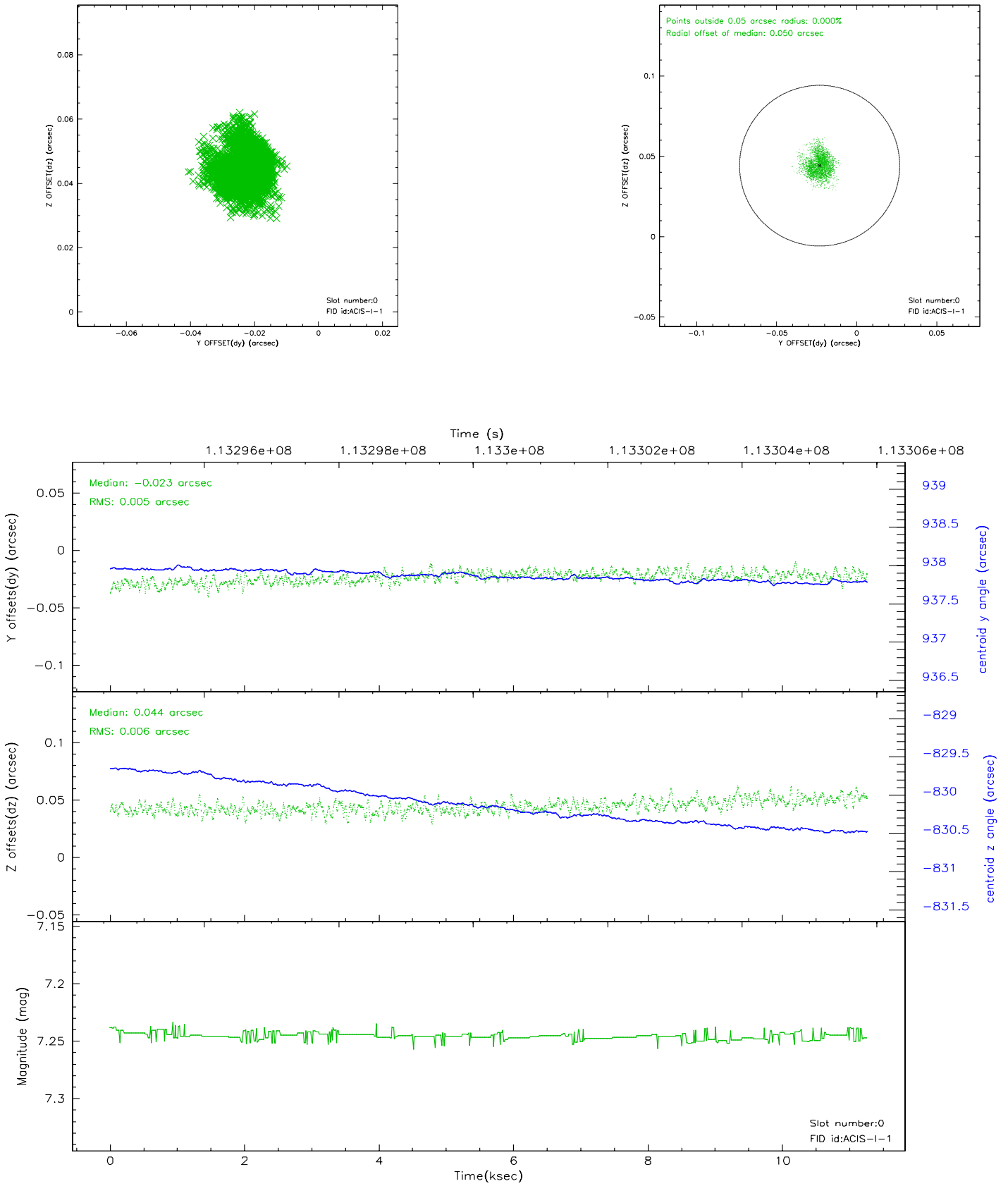


2.4.5 Slot 7

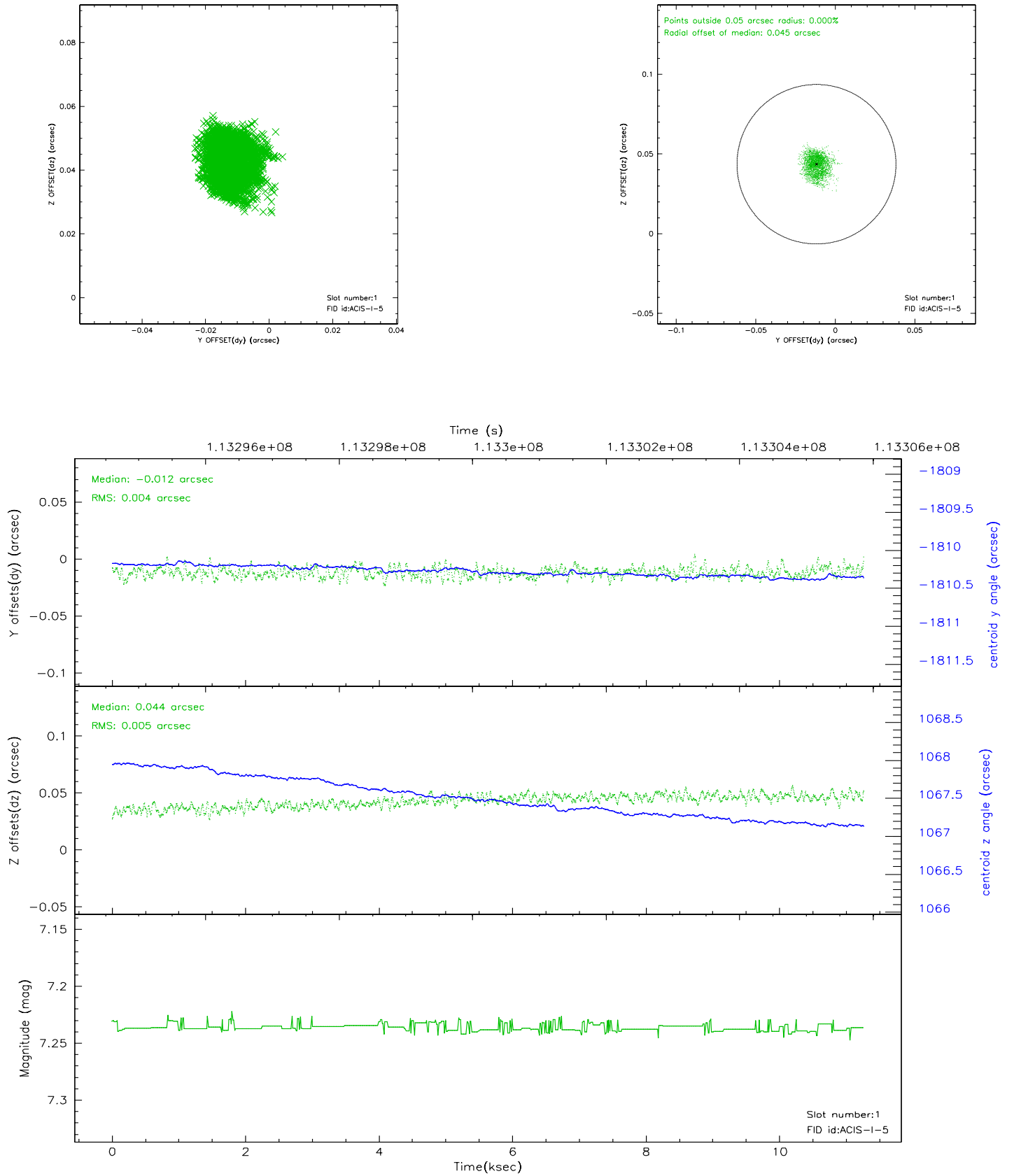


2.5 FID Slots

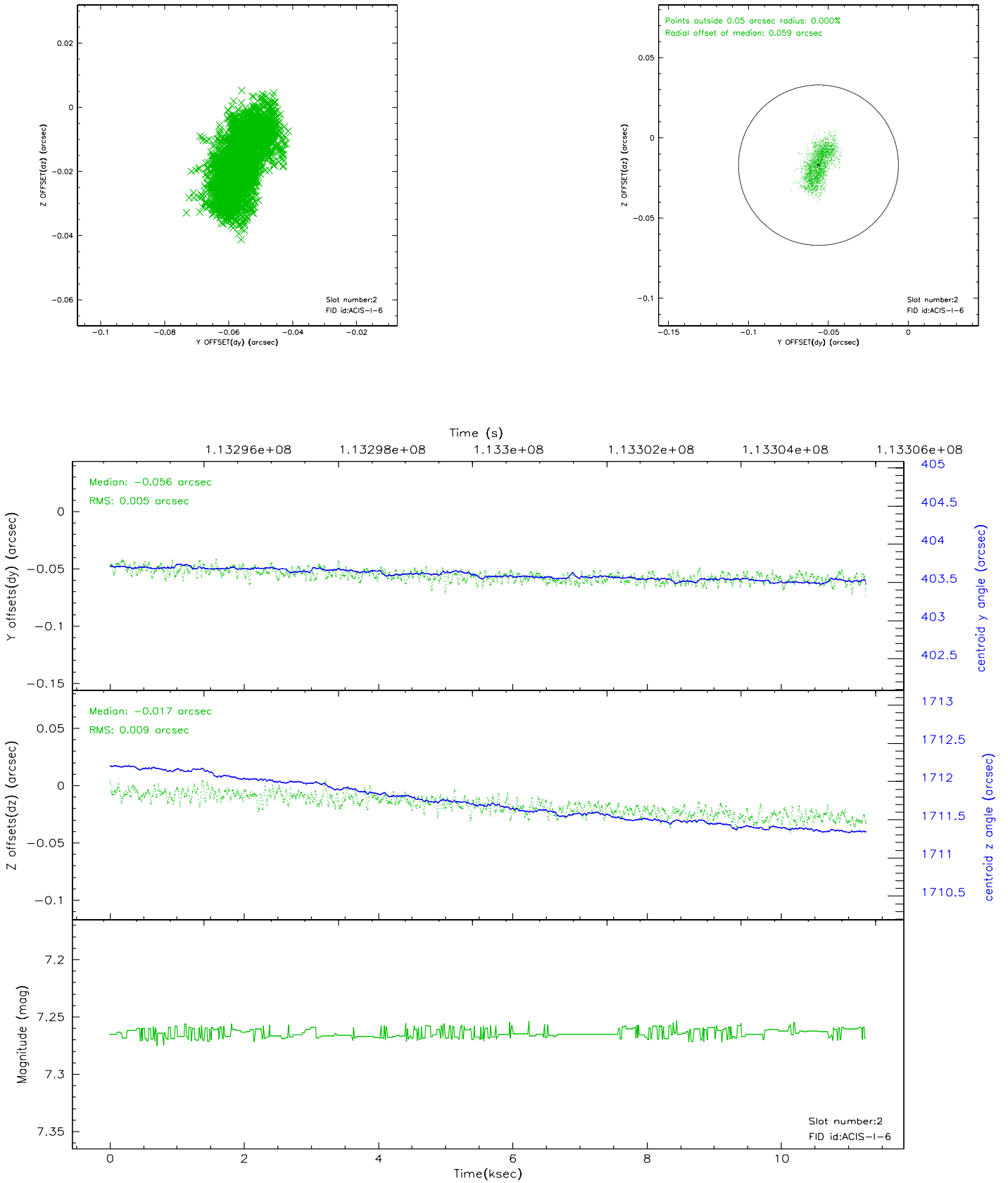
2.5.1 Slot 0



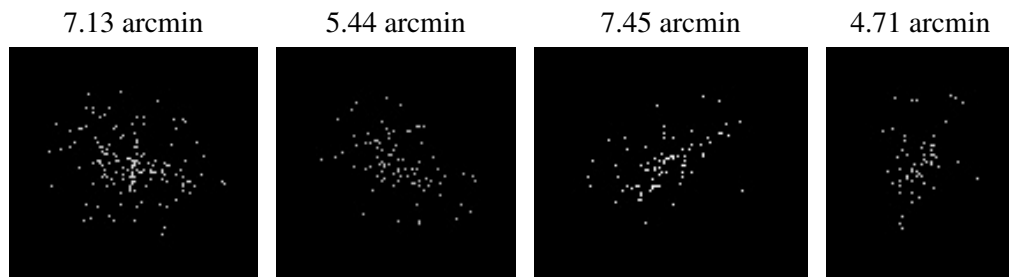
2.5.2 Slot 1



2.5.3 Slot 2



3 Point Sources



A Summary

A.1 Status

V&V Scientist	Beth Sundheim
V&V Date (YYYY-MM-DD)	2006.12.17
V&V Edition	1
V&V Disposition and Status	OK
V&V Charge Time	11

A.2 Comments