

V&V Reference Report

L2 ASCDS Version : 7.6.9

Observation 2227 - L2 Version 001
Chandra X-Ray Center

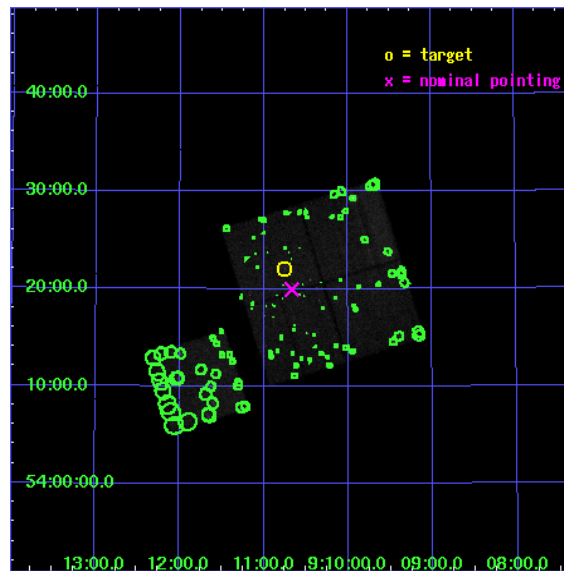
L2 Processing Date : Nov 29 2006

Contents

1	Front	2
2	OBI	3
2.1	OBI	3
2.1.1	Images	3
2.1.2	Bias	3
2.1.3	Parameters	4
2.1.4	Events	4
2.2	Compared Parameters	5
2.3	Aspect	6
2.4	Star Slots	9
2.4.1	Slot 3	9
2.4.2	Slot 4	10
2.4.3	Slot 5	11
2.4.4	Slot 6	12
2.4.5	Slot 7	13
2.5	FID Slots	14
2.5.1	Slot 0	14
2.5.2	Slot 1	15
2.5.3	Slot 2	16
3	Point Sources	17
A	Summary	18
A.1	Status	18
A.2	Comments	18

1 Front

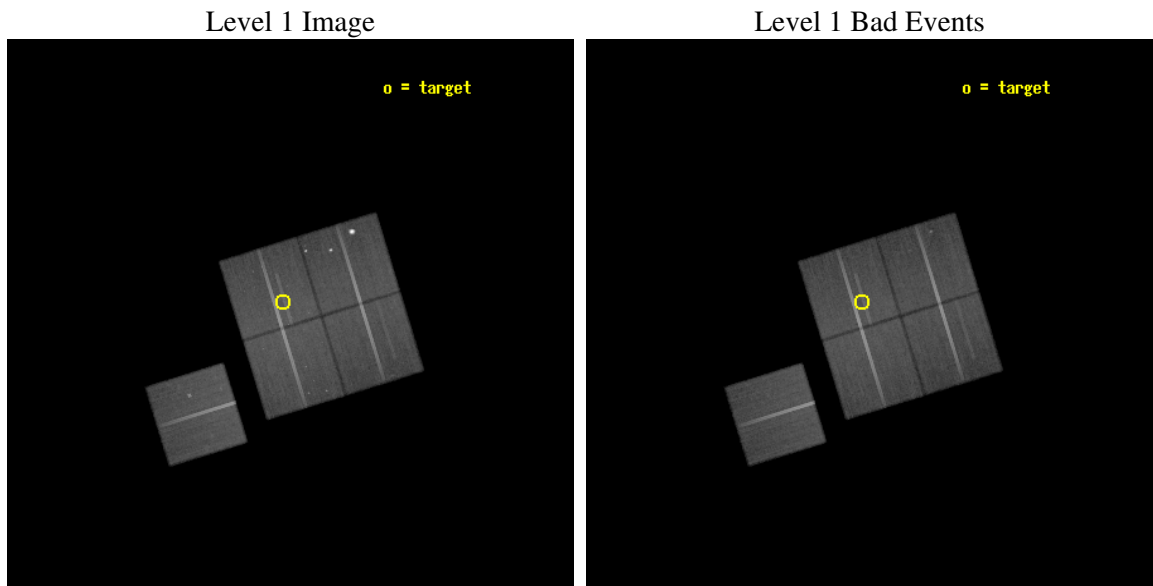
seq_num	800166
obs_id	2227
title	A COMPLETE X-RAY CLUSTER SAMPLE AT $Z > 0.8$
observer	Dr. Spencer Stanford
object	RX J0910+5422
dtcycle	0
cycle	P
ra_targ	137.689208
dec_targ	54.368056
ra_nom	137.66683284689
dec_nom	54.332598333638
roll_nom	252.83198162144
revision	2
ontime	107135.67208219
livetime	105735.8656543
ontime0	107148.235963
ontime1	107148.23593307
ontime2	107138.81306234
ontime3	107135.67208219
ontime6	107154.5179134
l2events	289350



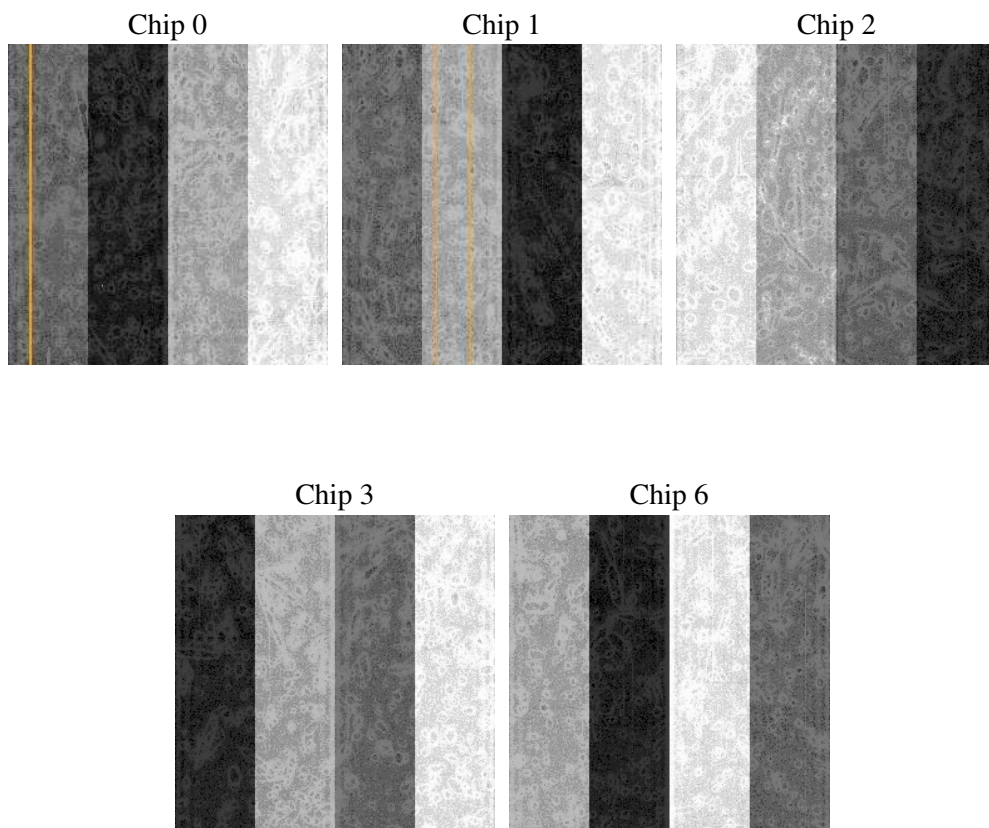
2 OBI

2.1 OBI

2.1.1 Images



2.1.2 Bias



2.1.3 Parameters

obi_num	2
ascdsver	7.6.9
caldsver	3.2.4
date	2006-11-29T16:20:07
revision	2

sched_exp_time	107047.584000
ontime	107139.45019889
ontime0	107152.0140797
ontime1	107152.01404977
ontime2	107142.59117904
ontime3	107139.45019889
ontime6	107158.29605003
l1events	2691325

2.1.4 Events

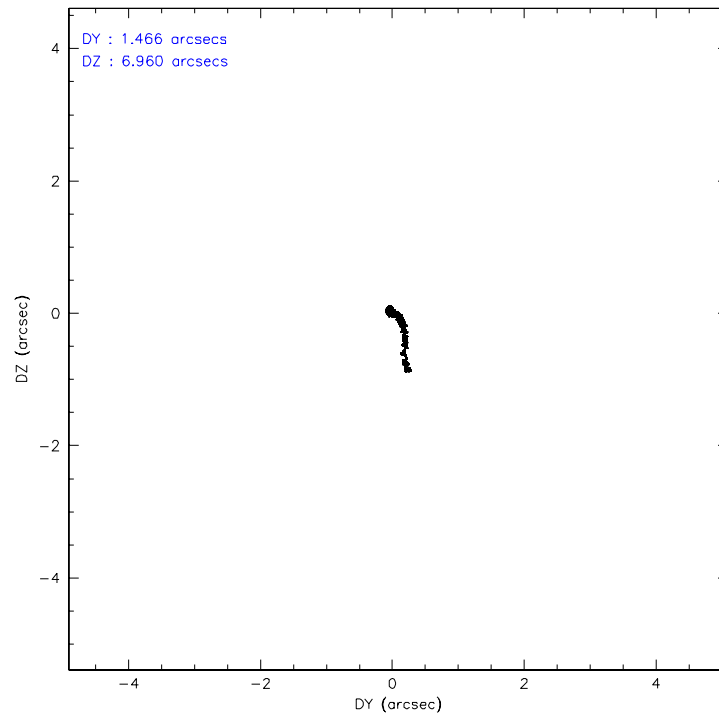
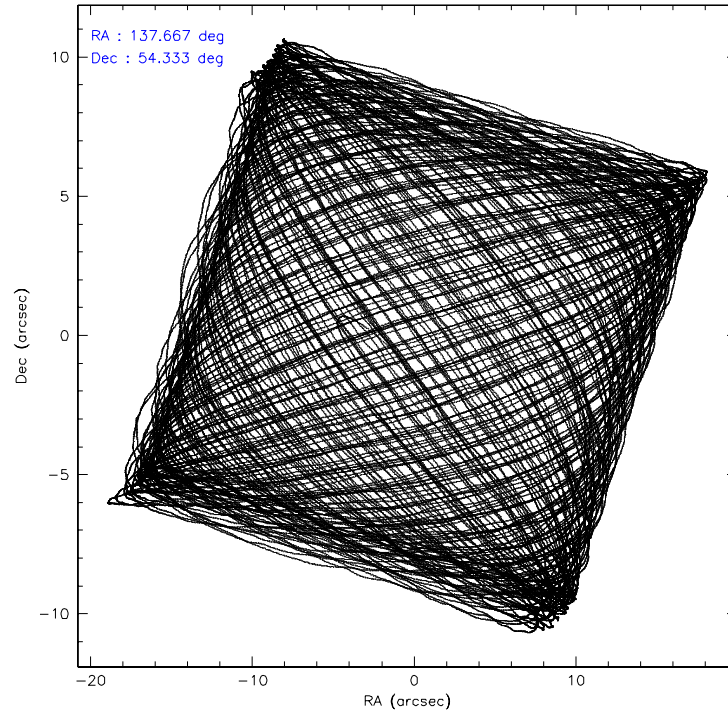
	ccd 0	ccd 1	ccd 2	ccd 3	ccd 6
level 1 events	490857	567627	551325	542599	538917
rejected events	438932	438361	496797	492561	480686
rejected %	89%	77%	90%	90%	89%

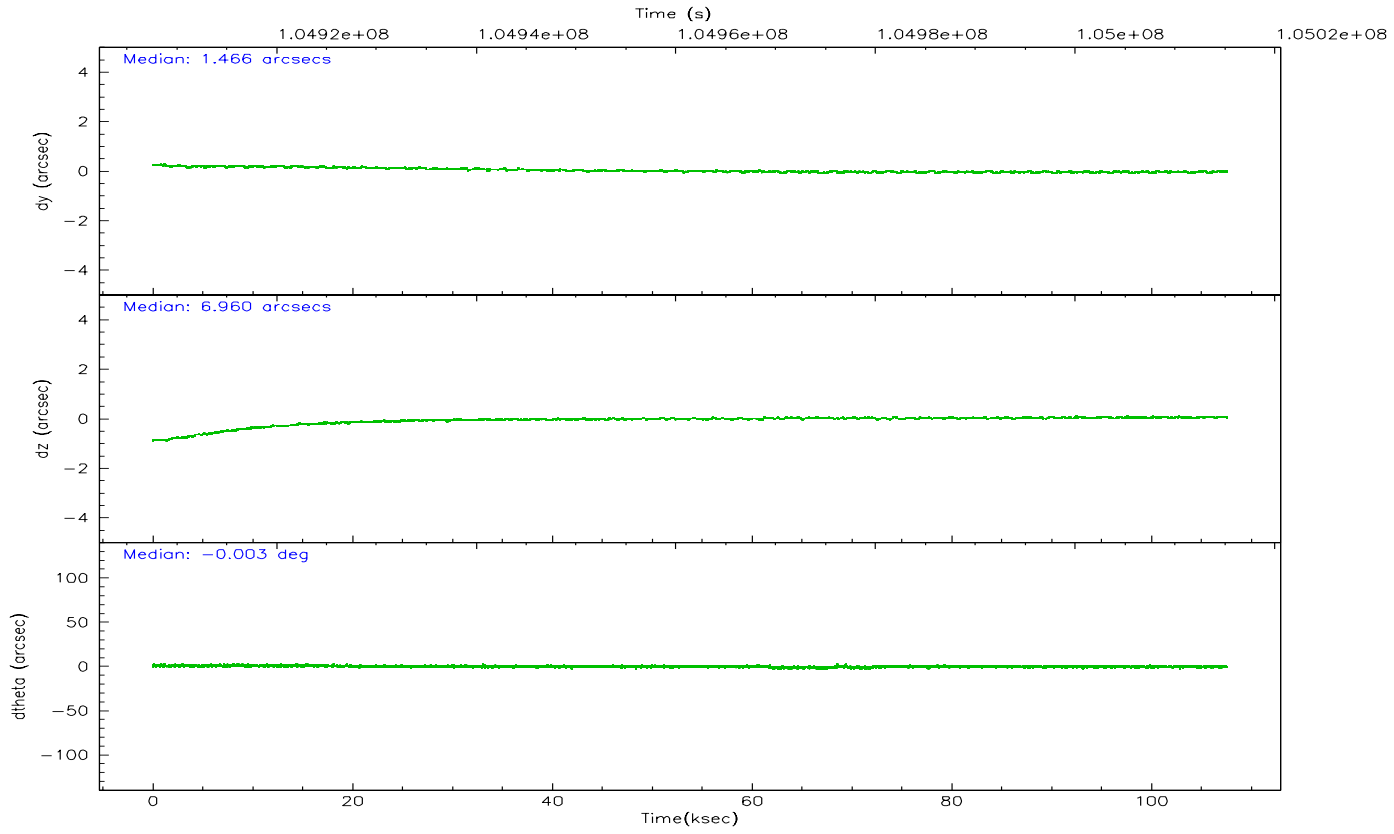
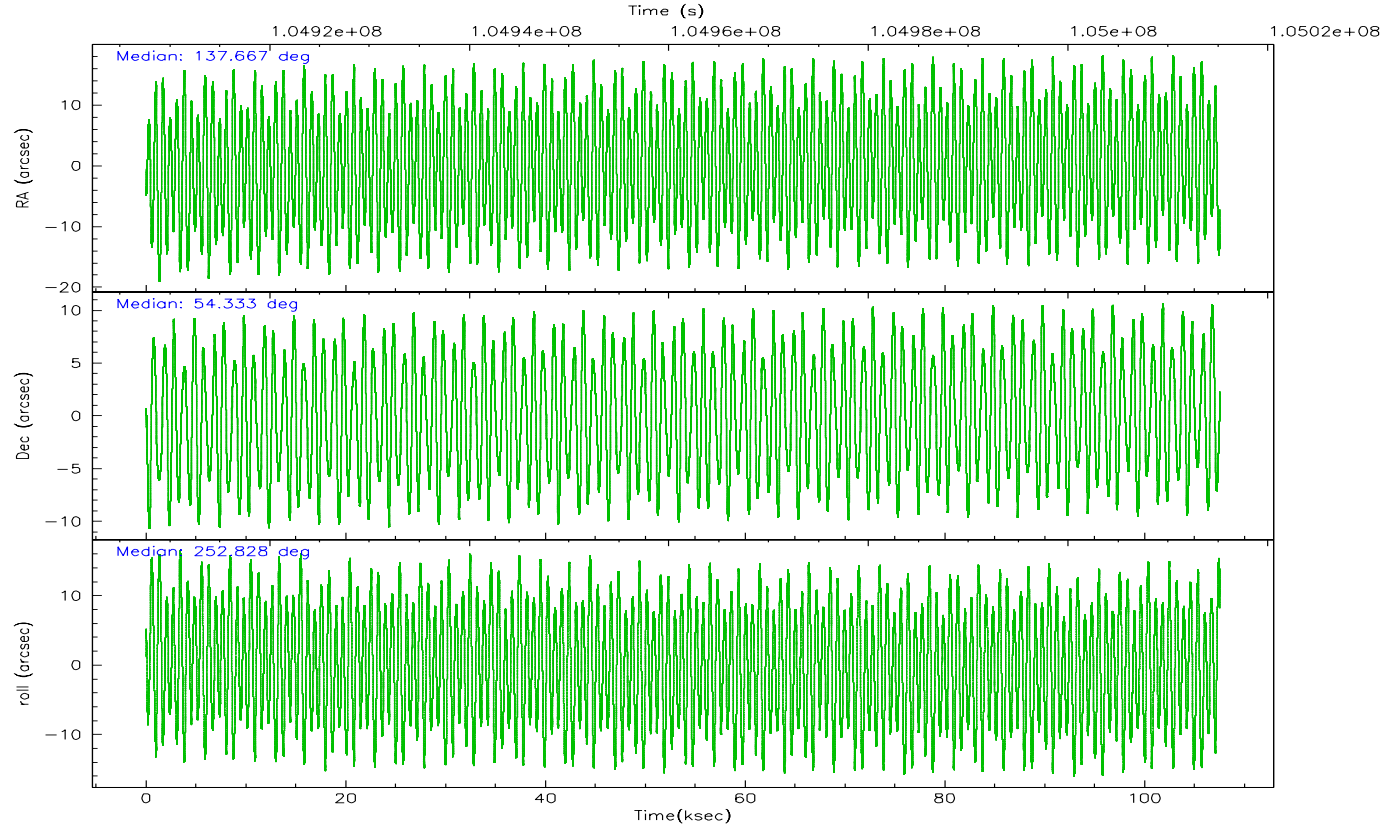
	ccd 0	ccd 1	ccd 2	ccd 3	ccd 6
grade 0 events	18467	82150	21609	18850	23829
	3%	14%	3%	3%	4%
grade 1 events	211	629	237	219	271
	0%	0%	0%	0%	0%
grade 2 events	11602	17775	11864	10234	11215
	2%	3%	2%	1%	2%
grade 3 events	6187	8764	5680	5705	6152
	1%	1%	1%	1%	1%
grade 4 events	5693	8400	5891	5552	6027
	1%	1%	1%	1%	1%
grade 5 events	16628	18287	15588	18011	18465
	3%	3%	2%	3%	3%
grade 6 events	9979	12182	9485	9698	11011
	2%	2%	1%	1%	2%
grade 7 events	422090	419440	480971	474330	461947
	85%	73%	87%	87%	85%

2.2 Compared Parameters

Parameter	Planned	Actual	Parameter	Planned	Actual
Instrument	ACIS	ACIS	Obspar format version number	6	6
Detector	ACIS-01236	ACIS-01236	Obspar file type	PREDICTED	ACTUAL
Grating	NONE	NONE	Obspar update status	NONE	UPDATED
Data mode	VFAINT	VFAINT	Number of optional ACIS chips dropped	0	0
Observation mode	POINTING	POINTING	On-chip summing requested	N	N
Pointing RA	137.656364	137.6668328468879	Subarray requested	NONE	NONE
Pointing Dec	54.359378	54.33259833363829	Alternating exposures requested	N	N
Pointing Roll	252.631810	252.8319816214406	Primary exposure time	0.000000	3.1
SIM focus pos (mm)	-0.782348	-0.7809083437167272			
SIM defocus (mm)	0	0.001439871863259334			
SIM translation stage pos (mm)	-225.592463	-225.5818545406617			
SIM translation stage offset (mm)	-8	-8.010598462268035			
Observation start time	104908175.184000	104907031.67046			
Observation start date	2001-04-29T05:08:31	2001-04-29T04:50:31			
Observation end time	105015222.184000	105015578.14967			
Observation end date	2001-04-30T10:52:38	2001-04-30T10:59:38			
Read mode	TIMED	TIMED			

2.3 Aspect



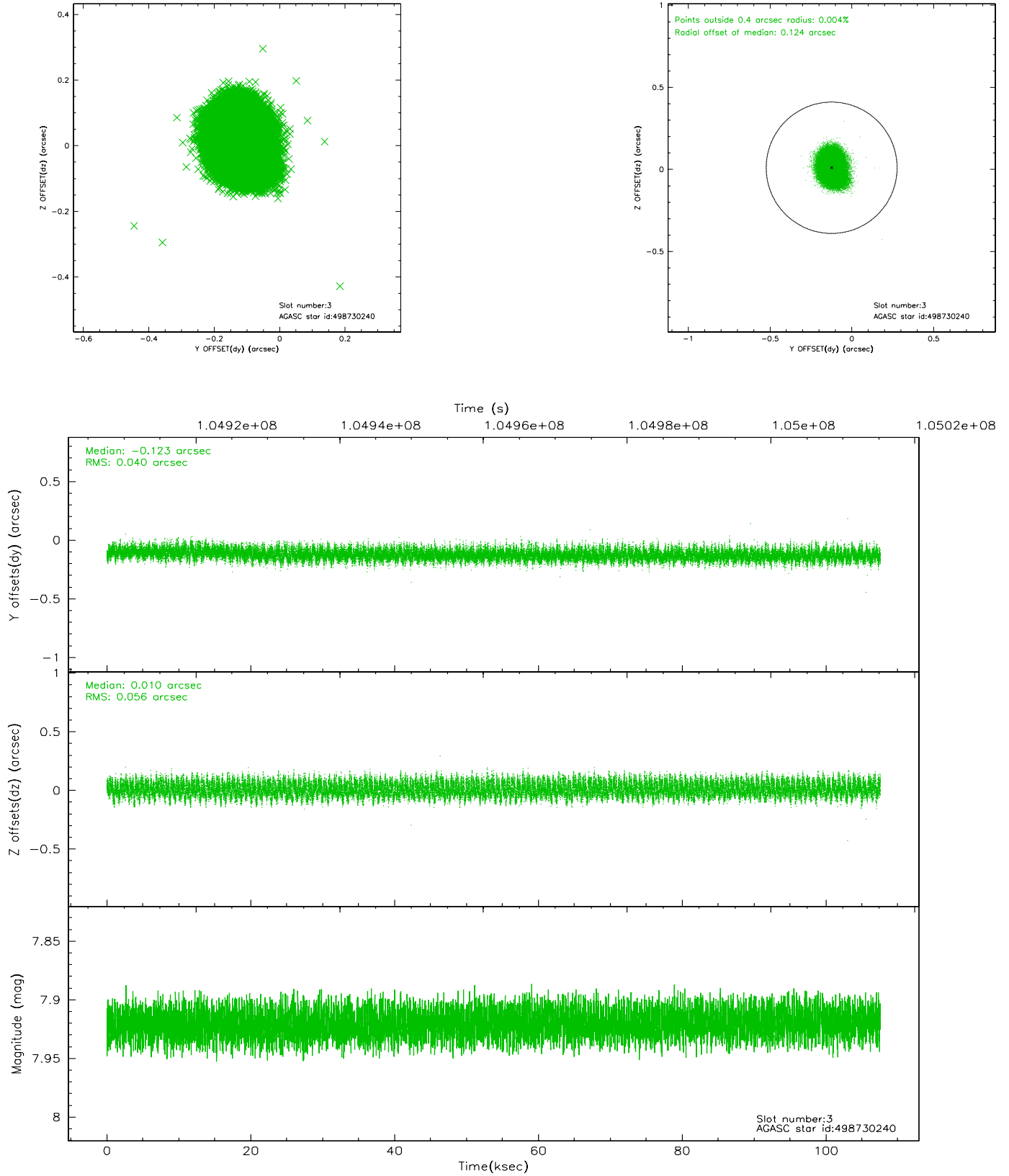


Slot Statistics

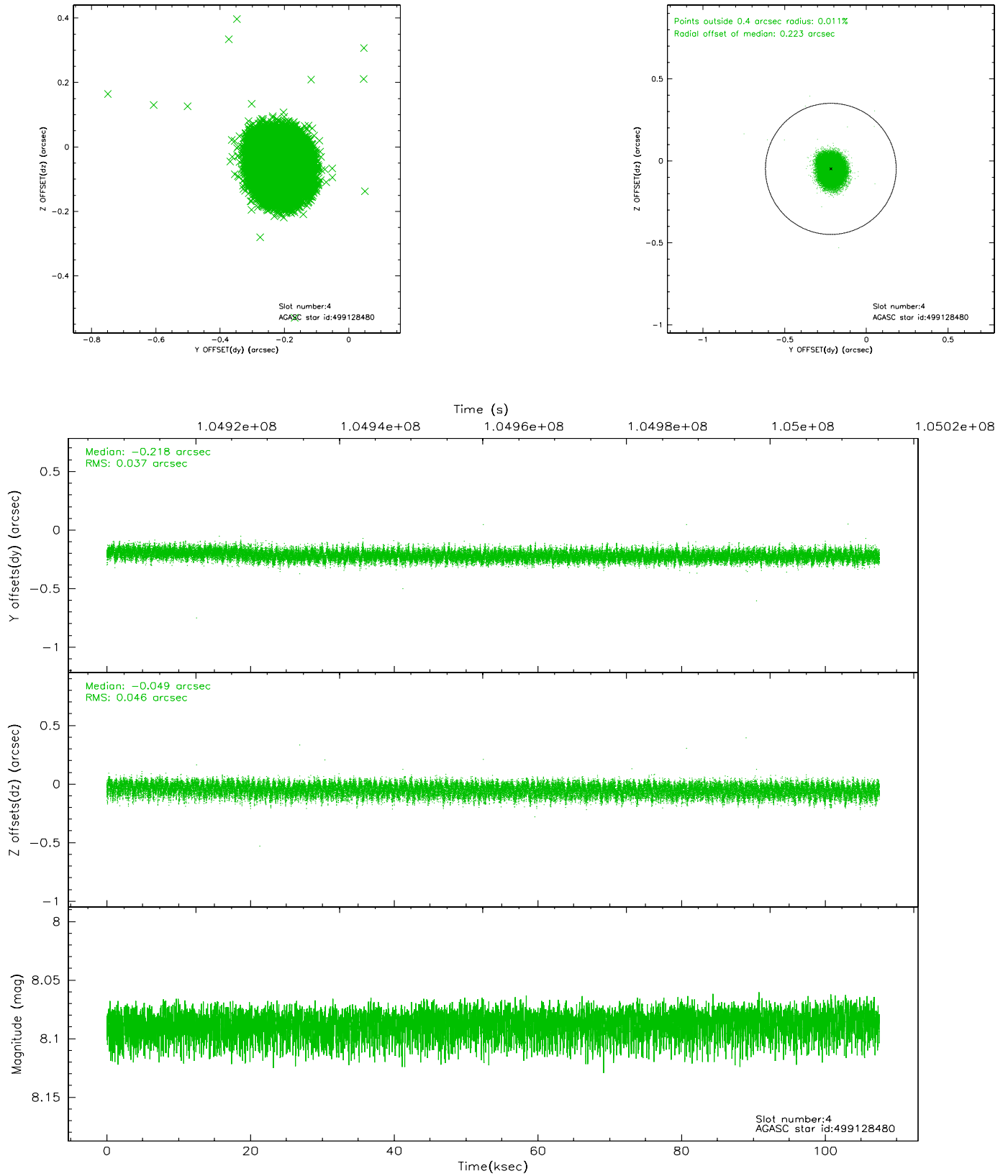
slot	status	id	mag	n_pts	med_dy	med_dz	dr1	dr2	ra	dec	mean_y	mean_z
0	FID	ACIS-I-2	7.18	26235	-0.049	-0.008	0.012	0.034	0.000000	0.000000	-756.45	-1000.04
1	FID	ACIS-I-4	7.16	26233	-0.068	0.038	0.008	0.037	0.000000	0.000000	2157.57	906.19
2	FID	ACIS-I-5	7.22	26240	0.017	0.040	0.012	0.028	0.000000	0.000000	-1809.93	902.89
3	GUIDE	498730240	7.92	52471	-0.123	0.010	0.074	0.117	137.555130	54.978650	-2065.76	-865.30
4	GUIDE	499128480	8.09	52480	-0.218	-0.049	0.063	0.100	137.142448	55.084845	-2180.69	-1791.53
5	GUIDE	498736832	9.17	52386	0.158	-0.059	0.077	0.128	136.584577	54.003311	1883.86	-1786.55
6	GUIDE	498862256	9.40	52383	0.034	0.152	0.110	0.173	138.592031	54.068839	395.38	2195.14
7	GUIDE	498733648	9.52	52383	0.147	-0.054	0.126	0.197	136.625659	54.306009	814.48	-2013.23

2.4 Star Slots

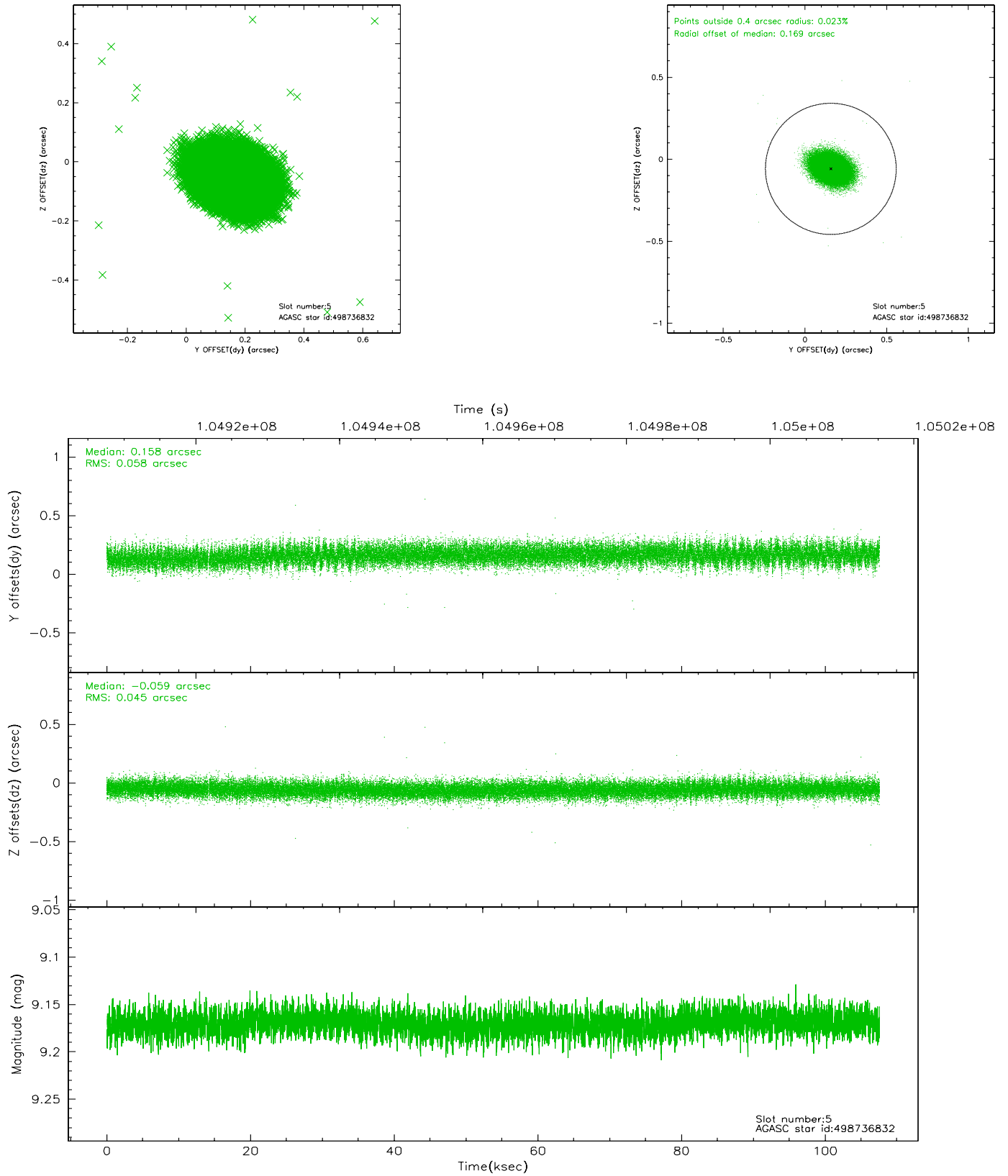
2.4.1 Slot 3



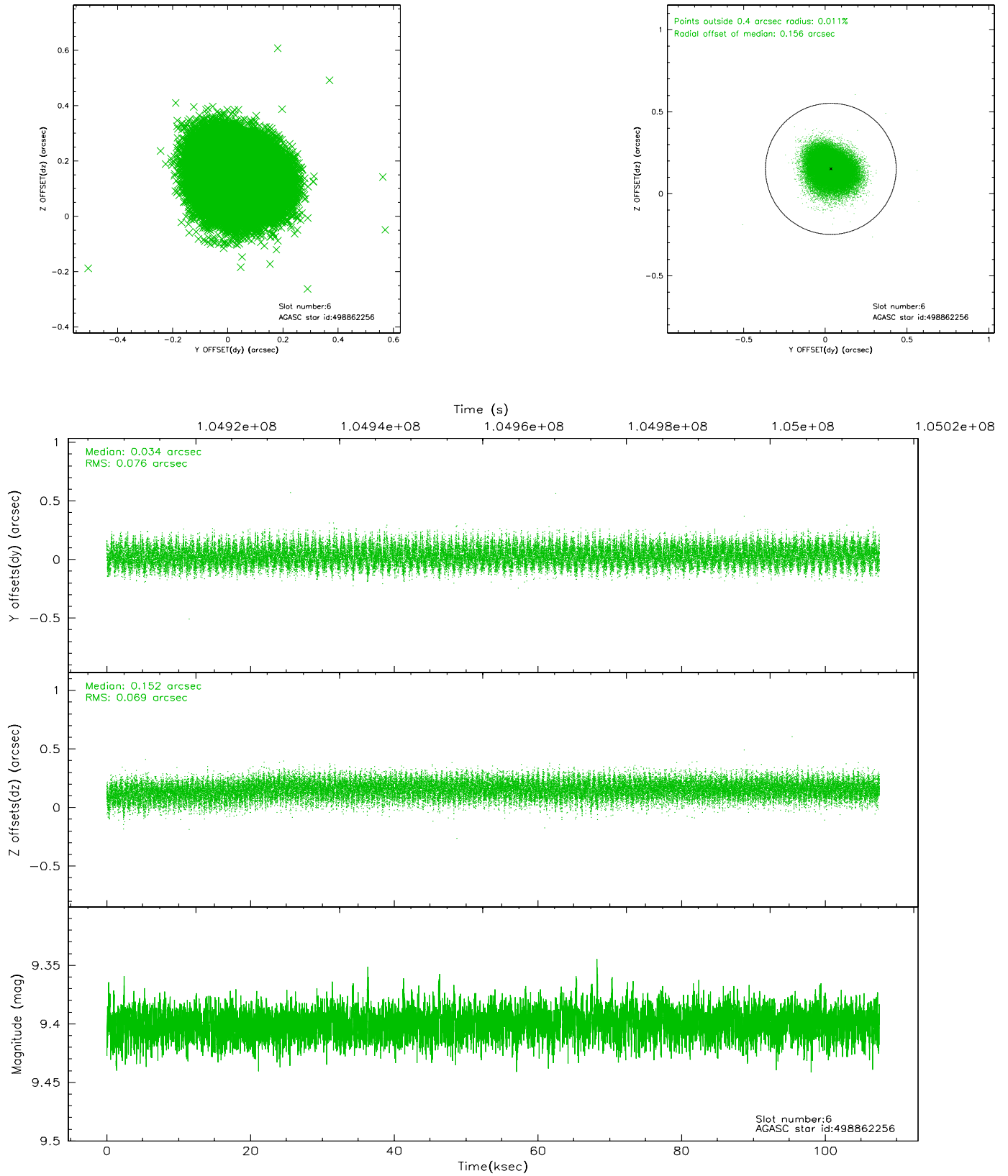
2.4.2 Slot 4



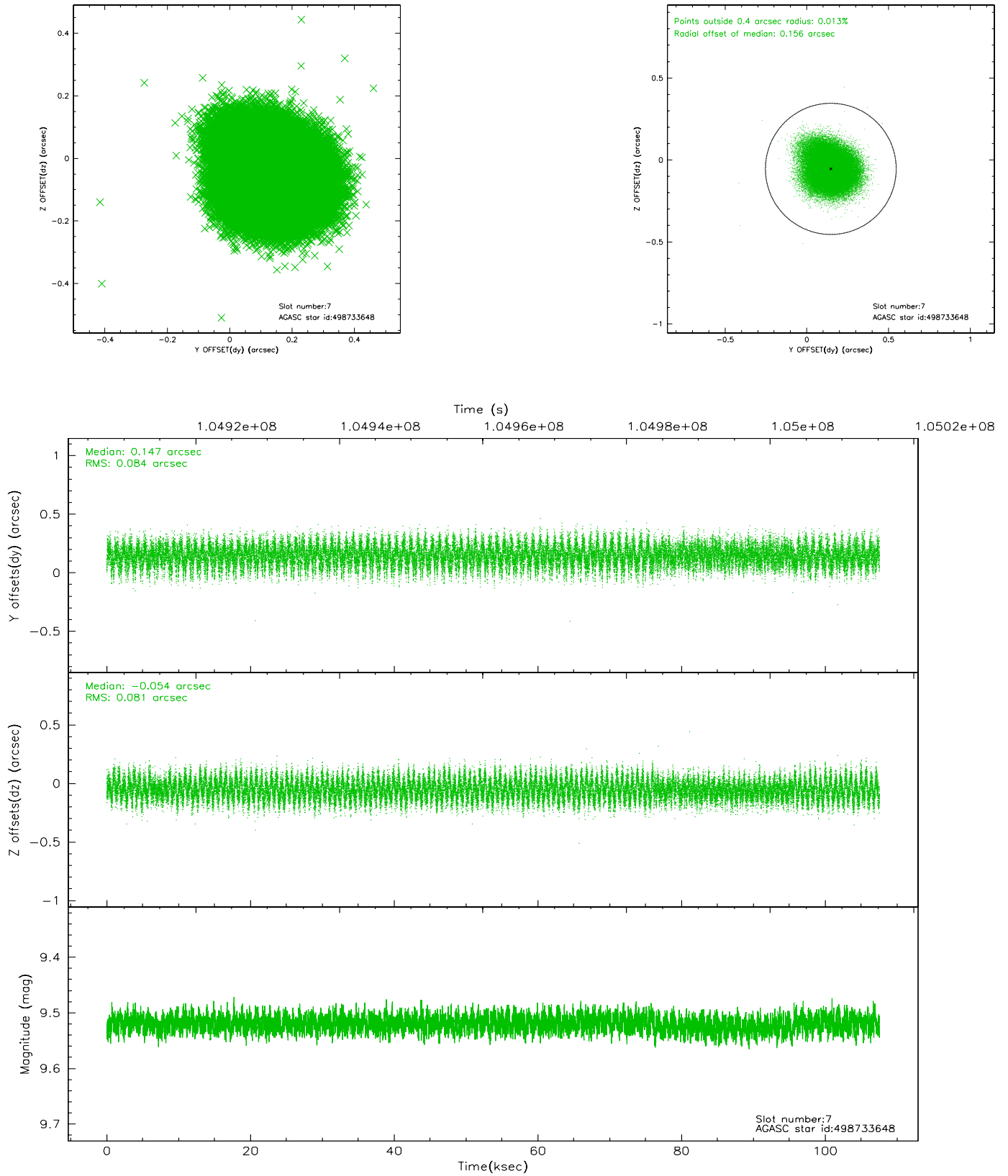
2.4.3 Slot 5



2.4.4 Slot 6

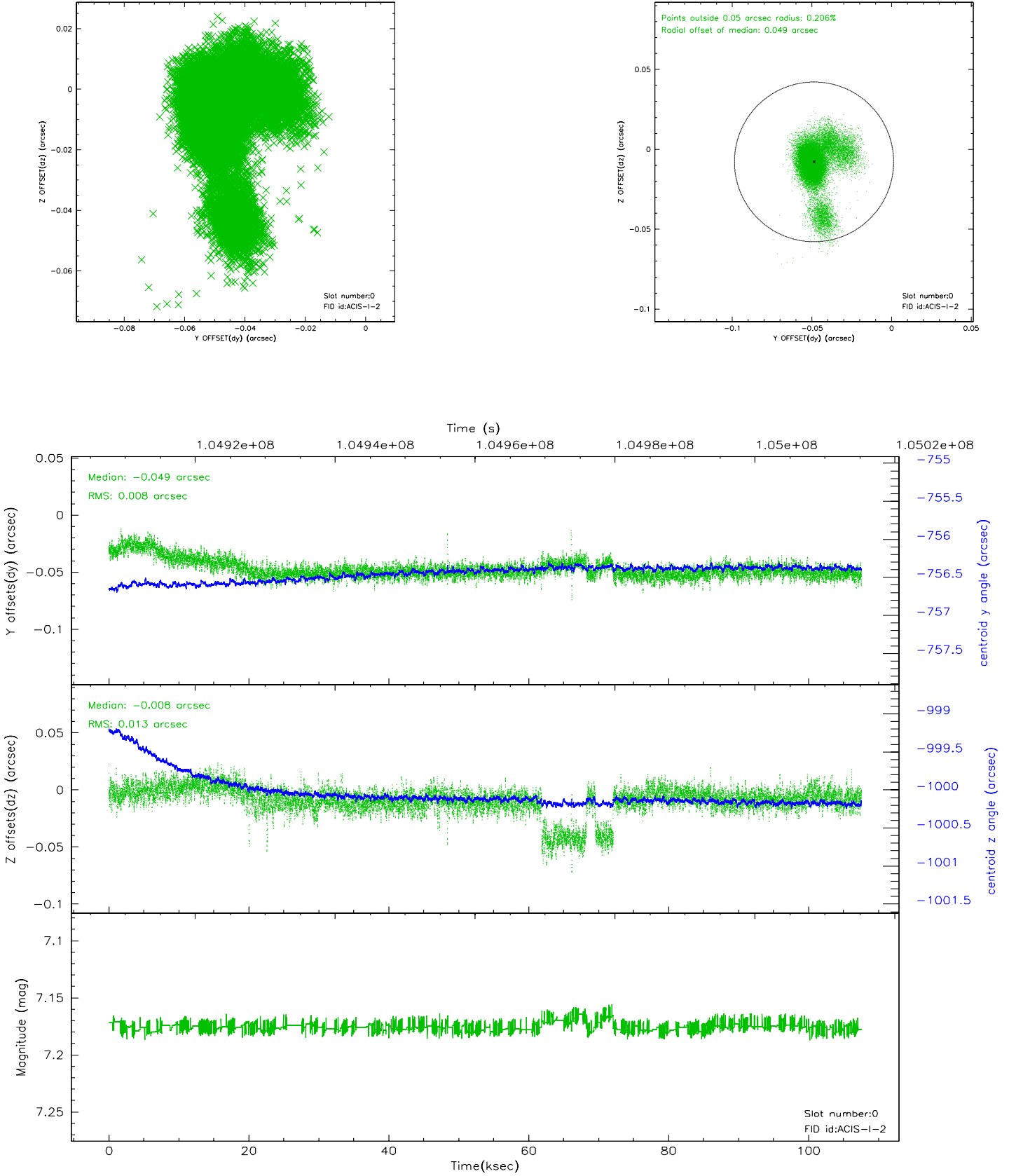


2.4.5 Slot 7

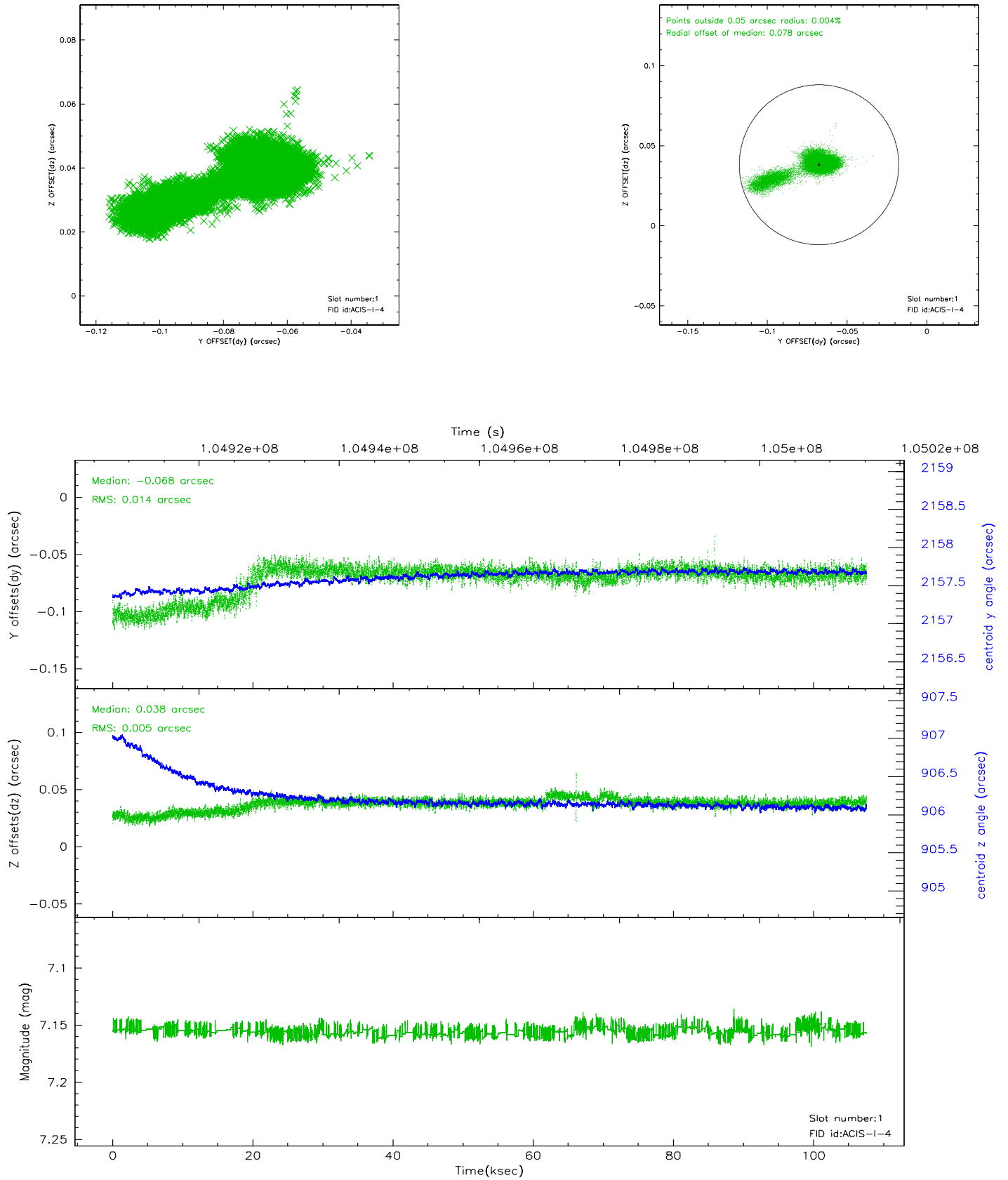


2.5 FID Slots

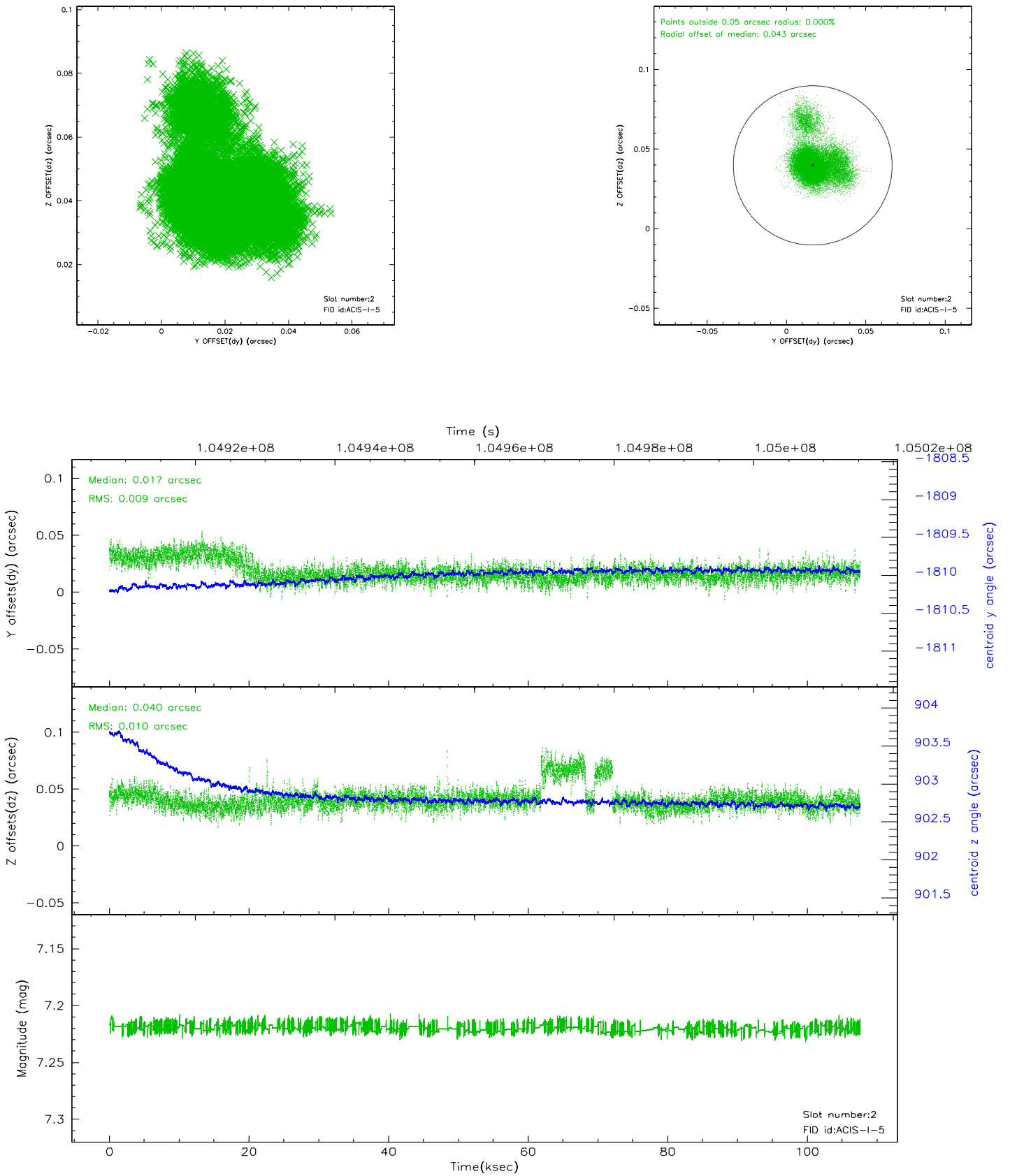
2.5.1 Slot 0



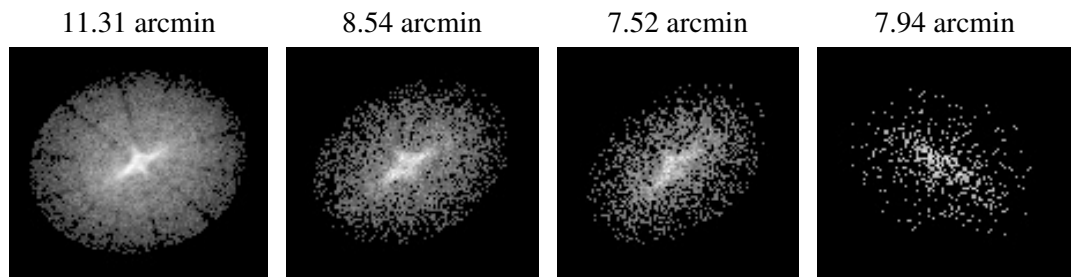
2.5.2 Slot 1



2.5.3 Slot 2



3 Point Sources



A Summary

A.1 Status

V&V Scientist	Beth Sundheim
V&V Date (YYYY-MM-DD)	2006.11.30
V&V Edition	1
V&V Disposition and Status	OK
V&V Charge Time	107

A.2 Comments